

# Net.Medic

*Your Remedy for Poor Online Performance*



A typical day on the Internet can be an exercise in frustration. You sit, waiting for a Web page to appear or wondering why your favorite site isn't responding. Or worse, you're disconnected. Not only are the Internet's inconsistencies and performance problems confusing, you don't know why the problems occur in the first place—let alone how to solve them.

**Net.Medic™ changes all that.**



# Take Control Over Your Corner of the Internet

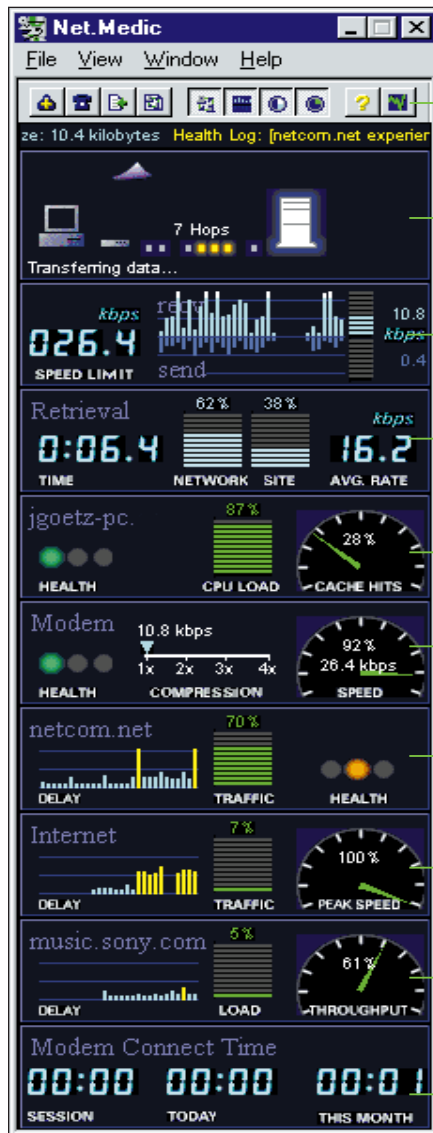
Net.Medic is a browser companion—software that works with your Internet browser to monitor, isolate, diagnose, and correct problems that affect your Internet experience. Now you can identify the source of your network bottleneck—your PC, modem, your Internet Service Provider (ISP), the Internet backbone, or remote Web site server. Net.Medic identifies problems in split seconds, offers you recommendations for solving them, and in certain cases, automatically fixes them for you.

Net.Medic is the personal Internet utility you've been waiting for, giving you actionable information that can measurably improve your personal online experience. Before Net.Medic, you could only talk about your frustration. Now you can do something about it.

## Identify and Isolate Your Internet Bottlenecks

Net.Medic identifies performance problems and isolates them to a specific component of your unique Internet path—PC, modem, ISP, the Internet itself, or a remote Web site. Net.Medic animates your end-to-end connection, showing you exactly what is occurring across the Internet, including traffic jams and bottlenecks. Is the problem in the network or at a specific server? Is the network congested or the connection slow? Green, yellow, and red indicators highlight the responsiveness of each component. And as you move from page to page, Net.Medic arrives split seconds before you do, continually monitoring your unique Internet path.

Once a problem is identified, Net.Medic provides you with critical vital signs about the health of the affected component, whether it's your PC, modem, ISP connection, Internet backbone, or Web server. Simply double-click, and you can drill down to detailed performance information that tells you exactly what is occurring.



Print reports on your Internet performance including your ISP's service levels.

Check the vital signs of your unique Internet path with Net.Medic's animated end-to-end overview.

Track data transfer in real time at a glance.

Index each Web page's retrieval time to determine if delays are caused by the network or the server (Web site).

Monitor and optimize the online performance of your PC.

Optimize your modem's compression and error-checking performance to speed Web page retrieval.

Track traffic levels, delays, and the overall health of your ISP's performance.

Isolate network problems to the Internet backbone.

Analyze real-time Web site performance, including Web application (HTTP) response time.

Track your actual online time to ensure proper billing.

**Net.Medic Diagnosis**

**Diagnosis** *Your serial port DTE, or Data Terminal Equipment, has not been set for optimal performance for your modem. The baud rate between your computer's serial port and the modem is currently 19200 bps. This can be increased to 115200 to improve performance. Your modem and PC support standard*

**Prescription** *Click on AutoCure to have Net.Medic optimize your modem and desktop configuration. Error correction and compression will be enabled. This can accelerate on-line performance up to 400%. The next time you connect to your ISP you should see a performance acceleration on long downloads that has been*

AutoCure    Notify    Close

Where	What	When	Who	Count
Server	Throughput	Wed Mar 05 11:33	www.netflaming.com	2
Server	Throughput	Wed Mar 05 11:37	www.rnandy.com	1
Server	Throughput	Wed Mar 05 11:36	www.house.mn.com	1
Client	Low receive	Wed Mar 05 11:33	Your PC	1
Client	Low receive	Wed Mar 05 11:30	Your PC	1
Server	Throughput	Wed Mar 05 11:30	www.heshitech.com	1
Client	Low receive	Wed Mar 05 09:59	Your PC	1
Server	Throughput	Wed Mar 05 09:59	www.house.mn.com	1
ISP egress	ISP traffic index	Tue Mar 04 11:54	netcom.net	1
ISP entry	ISP traffic index	Tue Mar 04 11:54	netcom.net	1
Modem	Modem disconnection	Tue Mar 04 11:53	Your Modem	3
Modem	Modem dead idle	Tue Mar 04 11:52	Your Modem	2
Modem	Modem speed suboptimized	Tue Mar 04 11:51	Your Modem	1

Diagnose    Acknowledge    Acknowledge All

*From summary reports of your Internet activity to recommended actions and AutoCure, Net.Medic provides information and tools for maximizing your Internet productivity.*



## Monitor Your Internet Vital Signs

By continuously monitoring activity along your end-to-end connection, Net.Medic tells you exactly what's happening at every critical juncture. Net.Medic reports your throughput, retrieval time, the Web server load and efficiency, as well as network delays and congestion levels. Net.Medic also monitors your PC and modem, ensuring optimal configuration for real-time Internet pathway conditions and providing historical trend information that enables you to make educated decisions about your Internet use.

## Remedies Common Internet Ailments

Net.Medic is the only product that automatically eliminates common Internet performance problems before you even encounter them. For example, Net.Medic can detect a hung server condition before you know it exists.

When this happens, Net.Medic can automatically re-initiate your server request, eliminating long waiting times, manual re-tries, and time-outs.

After identifying a problem and describing it in clear language, Net.Medic will ask if you want the problem automatically fixed using the AutoCure™ feature. For example, if your Internet interaction is slow, it may be because your modem is not taking advantage of compression or is connected at a sub-optimal speed. If so, Net.Medic will tell you and then ask if you would like to optimize your modem connection. Click AutoCure and it's done. The next time you log on, your modem will automatically take advantage of compression. By transparently correcting common Internet problems, Net.Medic eliminates much of the frustration experienced by Internet users today.

## Contacts Appropriate Assistance

If a slow-down occurs at a point beyond your PC or modem, Net.Medic can automatically generate an e-mail message to the appropriate contact requesting assistance—including accurate documentation of the problems you've experienced—and will ask you for permission to send it. Net.Medic gives you the ability to track and document your Internet experience.

## Check your ISP

Net.Medic monitors and reports your ISP's performance, logging busy signals, call completions, disconnects, average connect rates and other data about the service levels you actually experience.

## Optimize Your Environment

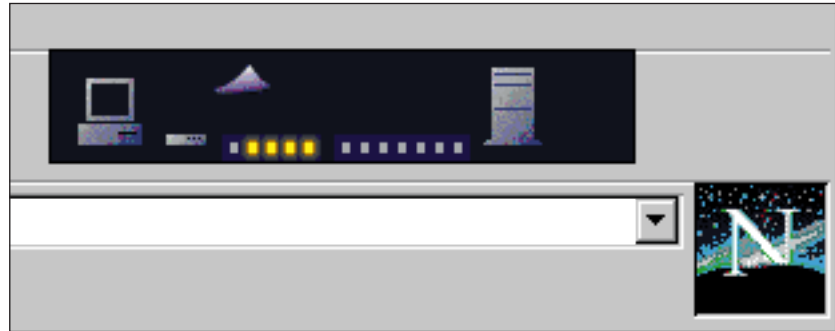
Net.Medic continually monitors your ISP connection and Internet conditions, dynamically adjusting your PC and modem configuration to optimize Internet performance. For example, if your local cache is not optimized for your Web browsing habits, Net.Medic will diagnose that condition and recommend changing the cache setting. With real-time diagnosis and optimization, Net.Medic enables you to create the optimal environment for high Internet productivity.

## Installs in Seconds

Upon installation, Net.Medic becomes an extension to your browser, appearing as a simple inlay to standard Internet browsers, including Netscape Navigator and Microsoft Internet Explorer. A compact file size downloads quickly, so that you can put the power of Net.Medic to work immediately, without any system reconfiguration.

## What are you waiting for?

If your Internet environment needs a check-up—or maybe a complete overhaul—make an appointment with Net.Medic. As the first product to give you control over your corner of the Internet, Net.Medic lets you take charge of your online experience. Visit the VitalSigns Web site and download Net.Medic today.



*Net.Medic appears as a simple inlay to standard Internet browsers, including Netscape Navigator and Microsoft Internet Explorer. At a glance, you can understand the health of your entire Internet performance—then drill down for specific actionable information.*

## System Requirements

- Windows '95 or Windows NT 4.0 operating system
- 16MB RAM recommended
- 2MB free disk space
- Netscape Navigator 3.0 or later, or Microsoft Internet Explorer 3.0 or later
- Internet connection and account

**Visit VitalSigns at [www.vitalsigns.com](http://www.vitalsigns.com)  
to download a free trial version of Net.Medic.**



VitalSigns Software, Inc.  
2933 Bunker Hill Lane, Santa Clara, California 95054  
[www.vitalsigns.com](http://www.vitalsigns.com)