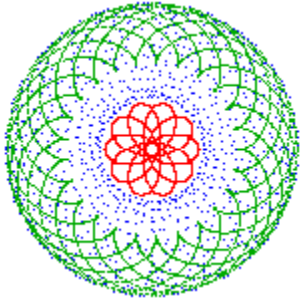
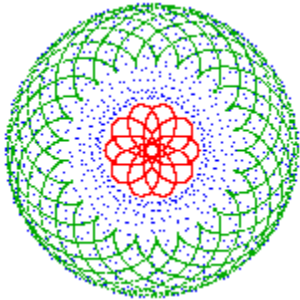


Contents



Spyro Art



Version 1.0

(C) Copyright 1997 Ron Balewski

[Introduction](#)

[Creating Spyro Art](#)

[Saving Spyro Art](#)

[Menu / Tool Bar Reference](#)

[Technical Support](#)

[Registration](#)

[Registration Form](#)

[Disclaimer and Warranty](#)


Introduction

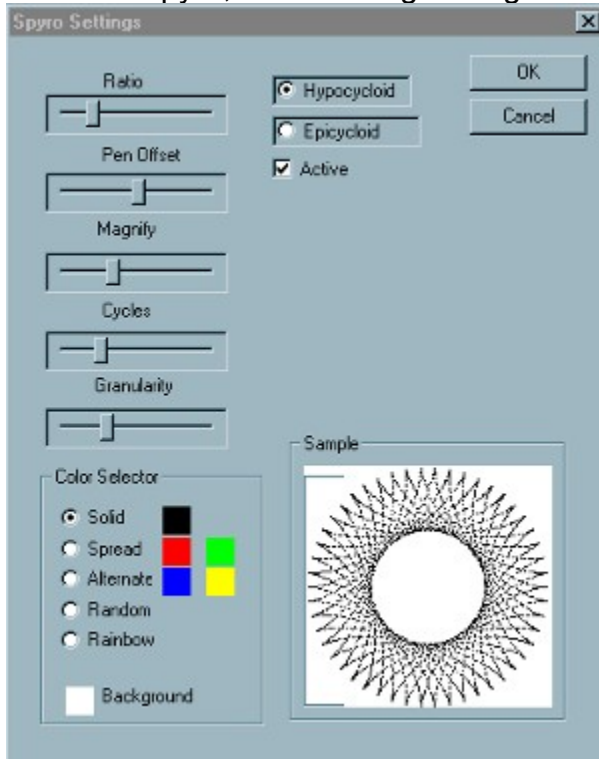
Spyro Art is a tool for electronically generating spiral graphics like those created by the Spirograph drawing system. The graphics can then be copied to the clipboard or saved as a bitmap file for use as clipart with your favorite drawing or page layout software.

Up to six spiral patterns can be included in each graphic. Each pattern can be assigned a solid color or one of several varying color patterns.

Printing is also supported.

Creating Spyro Art

Creating Spyro Art is actually quite easy... and kind of fun! First, choose which of the six available Spyro patterns you'd like to modify by selecting it from the Edit.. Settings menu or clicking the appropriate tool bar button: . When you choose a spyro, the following setting box will appear:

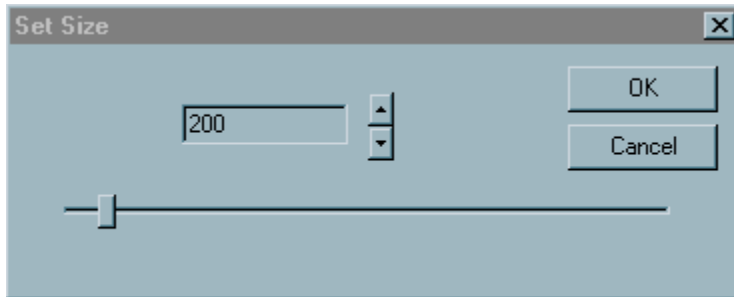


You use the controls in this box to create the desired pattern. The Ratio slider controls the size of the rotating circle relative to the fixed circle. The Pen Offset controls the location of the virtual pen point on the rotating circle. Magnify controls the overall size of the pattern. Cycles controls the number of revolutions the small circle will make. And Granularity controls the density of plotted points.. The higher the granularity, the fewer points plotted, and therefore the "grainier" the final image. For color selection, Solid will use only one color for the entire pattern. Spread will gradually shift colors from the first to the second on each cycle. Alternate will alternate between the two colors on each drawing cycle. Random will choose a random 24-bit color for each cycle. Rainbow will gradually cycle through the entire rainbow spectrum with each new cycle. The background color will set the background. Note that only the background color of Spyro 1 is used. The background setting for all other spyros of a given design will be ignored. To change a color, simply click on the sample color and choose a new color from the standard color selection box. The choice of Hypocycloid or Epicycloid will select whether the moving circle is riding along inner or outer surface of the fixed circle. Finally, the Active box must be checked for this pattern to appear in the final output. As you change settings, the sample box will update to show you the pattern produced by the current settings. Once you like the pattern, click OK. Click Cancel to discard the changes made to the pattern.

The technical details behind what the various controls do is really unimportant. The best way to learn what the sliders do and to put together Spyro Art designs is to just play around with the controls until you find something that you like. As you experiment, you'll gradually learn what the various sliders do and will be able to make more educated choices while putting together a pattern.

Saving Spyro Art

There are three ways to save Spyro Art designs. The first is to use the File.. Save Data menu option to save the numeric data that's used to generate the Spyro Art design. You can load these Spyro Art Data (.SPD) files into Spyro Art again later to modify or view them. The File.. Open menu selection is used to load a Spyro Art Data file into the currently selected window.



The second method of saving a Spyro Art design is as a bitmap (.BMP) file using the File... Save Image menu command. When you select this menu entry, you'll see a standard file selection dialog box to allow you to enter the name of the bitmap file. Following that, you'll see a Set Size box, as illustrated to the right. You should use the slider and / or spinner control to select the number of pixels per side you'd like the bitmap to be saved in. This will, of course, depend on how you plan to use the image. If you're printing the image on a 600 DPI laser printer, saving the image at 30 pixels per side will obviously produce terrible results when scaled. Likewise, if you plan to make a 32-pixel icon with the image, saving the bitmap in some large size will also produce poor results due to scaling.

The third method isn't really a save. By selecting Edit.. Copy from the menu, you'll put a copy of the spyro design as a bitmap on the Windows clipboard. Again, you'll be given the Set Size box to allow you to scale the bitmap image to suit wherever you plan to put it.

Disclaimer and Warranty

LIMITED WARRANTY AND DISCLAIMER OF WARRANTY

THIS SOFTWARE AND ACCOMPANYING WRITTEN MATERIALS (INCLUDING INSTRUCTIONS FOR USE) ARE PROVIDED "AS IS" WITHOUT WARRANTY OF ANY KIND. FURTHER, RON BALEWSKI DOES NOT WARRANT, GUARANTEE, OR MAKE ANY REPRESENTATIONS REGARDING THE USE, OR THE RESULTS OF USE, OF THE SOFTWARE OR WRITTEN MATERIALS IN TERMS OF CORRECTNESS, ACCURACY, RELIABILITY, CURRENTNESS, OR OTHERWISE. THE ENTIRE RISK AS TO THE RESULTS AND PERFORMANCE OF THE SOFTWARE IS ASSUMED BY YOU. IF THE SOFTWARE OR WRITTEN MATERIALS ARE DEFECTIVE, YOU, AND NOT RON BALEWSKI OR HIS DEALERS, DISTRIBUTORS, AGENTS, OR EMPLOYEES, ASSUME THE ENTIRE COST OF ALL NECESSARY SERVICING, REPAIR, OR CORRECTION.

THE ABOVE IS THE ONLY WARRANTY OF ANY KIND, EITHER EXPRESS OR IMPLIED, INCLUDING BUT NOT LIMITED TO THE IMPLIED WARRANTIES OF MERCHANTABILITY AND FITNESS FOR A PARTICULAR PURPOSE THAT IS MADE BY RON BALEWSKI, ON THIS PRODUCT.

NO ORAL OR WRITTEN INFORMATION OR ADVICE GIVEN BY RON BALEWSKI, HIS DEALERS, DISTRIBUTORS, AGENTS OR EMPLOYEES SHALL CREATE A WARRANTY OR IN ANY WAY INCREASE THE SCOPE OF THIS WARRANTY AND YOU MAY NOT RELY ON ANY SUCH INFORMATION OR ADVICE. YOU MAY HAVE OTHER RIGHTS WHICH VARY FROM STATE TO STATE.

NEITHER RON BALEWSKI NOR ANYONE ELSE WHO HAS BEEN INVOLVED IN THE CREATION, PRODUCTION OR DELIVERY OF THIS PRODUCT SHALL BE LIABLE FOR ANY DIRECT, INDIRECT, CONSEQUENTIAL OR INCIDENTAL DAMAGES (INCLUDING DAMAGES FOR LOSS OF BUSINESS PROFITS, BUSINESS INTERRUPTION, LOSS OF BUSINESS INFORMATION, AND THE LIKE) ARISING OUT OF THE USE OR INABILITY TO USE SUCH PRODUCT EVEN IF RON BALEWSKI HAS BEEN ADVISED OF THE POSSIBILITY OF SUCH DAMAGES.

This Limited Warranty shall be governed and construed in accordance with the laws of the Commonwealth of Pennsylvania.

ACKNOWLEDGMENT

BY USING THE SHARE WARE VERSION OF SPYRO ART YOU ACKNOWLEDGE THAT YOU HAVE READ THIS LIMITED WARRANTY, UNDERSTAND IT, AND AGREE TO BE BOUND BY ITS' TERMS AND CONDITIONS. YOU ALSO AGREE THAT THE LIMITED WARRANTY IS THE COMPLETE AND EXCLUSIVE STATEMENT OF AGREEMENT BETWEEN THE PARTIES AND SUPERSEDE ALL PROPOSALS OR PRIOR AGREEMENTS, ORAL OR WRITTEN, AND ANY OTHER COMMUNICATIONS BETWEEN THE PARTIES RELATING TO THE SUBJECT MATTER OF THE LIMITED WARRANTY.

Registration

In an effort to keep my overhead (and therefore registration costs) low, I'm trying a new registration method with Spyro Art. The basic registration fee is \$10. For that you will receive, by e-mail, a password to unzip the .ZIP file of the registered version of Spyro Art. You must then download the registered version from my Spyro Art WWW page accessible thru my home page at:

<http://www.microserve.com/~ronb>

After downloading, you must unzip the file with the supplied password & run the resulting .EXE installation file.

For those who'd prefer a floppy disk containing the latest registered version, I will have them available for \$3.

Please note that if you choose to take advantage of the "diskless" registration, I will expect that you are able to download the registered version from my WWW page. I will also expect that you have PKZip or some unzipping tool which allows passwords, and that you know how to use it to unzip a password protected file (or at least are able to find out on your own). I will not provide technical support for web browsers or unzipping tools needed to download and install the registered version of Spyro Art from the internet. If you have any question of your ability to do this, you should order the floppy disk when registering.

So far, I can only accept a check or money order as the registration fee. I can't yet accept credit cards, although I'm working on it. Registrations should be sent to:

Ron Balewski

412 E Ridge St.

Nanticoke, PA 18634

For your convenience, I'm including a small registration form in this help file which you can print and fill out.

Comments can be sent via mail to the above address or via e-mail to:

ronb@paradox.microserve.com

Registration Form

Registration Form for Spyro Art v 1.0

Name: _____

Address: _____

City, State, Zip: _____

E-Mail Address _____

Please note: an E-Mail address is mandatory if you wish to receive just a password for the downloadable registered version!

Spyro Art Basic Registration (\$10.00)	\$10.00
Registered Disk (\$3.00)	_____
TOTAL	_____

Where did you receive your copy of Spyro Art?

What do you use Spyro Art for? (entertainment, generating clipart, generating pictures, etc)

Are there any features not included that you'd find useful?

Technical Support

Technical support for Spyro Art will be available by mail or e-mail to registered users only. The e-mail address to use is ronb@paradox.microserve.com.

I don't officially provide telephone support, which is why I don't publish a telephone number. If you happen to find my number and happen to call when I'm around, I'll be glad to talk to you. But I can be very hard to get ahold of and don't return phone calls, so even if you plan to try to get through by phone, send your question by mail or e-mail too. You may get an answer via mail quicker than via telephone -- and e-mail will definitely beat the telephone.

Menu / Tool Bar Reference

File Menu

New 

Opens a New Spyro Art design window with a default Spyro Art design

Open 

Opens a Spyro Art data file (.SPD) into the current window

Close

Closes the current Spyro Art design window

Save Data 

Saves a Spyro Art data file (.SPD) of data for the current Spyro Art Design window

Save Image 

Saves a .bitmap format (.bmp) image of the Spyro Art design in the current window.

Print 

Prints the Spyro Art design in the current window

Print Preview

Print Preview of the Spyro Art design in the current window

Print Setup

Set printer parameters

Exit

Exit Spyro Art

Edit Menu

Copy 

Copies the Spyro Art design in the current window to the clipboard.

Settings



Sets one of the six Spyro Art patterns in the Spyro Art design of the current window.

View Menu

Tool Bar

Shows or hides the Tool Bar

Status Bar

Shows or hides the Status Bar

Window Menu

New WINDOW

Opens a new Spyro Art design window. Same as File.. New menu selection.

Cascade

Cascades all open Spyro Art design windows.

Tile

Tiles all open Spyro Art design windows.

Arrange Icons

Arranges all Spyro Art design window icons neatly on the bottom of the screen.

Help Menu

Online Manual

Displays On-Line Manual

About Spyro Art



Displays Spyro Art program info

