

To select any of the help lessons, click with the mouse when you see the  cursor.

**Using Kudo Browser**

Information on using Kudo Browser software to view, copy and select images.

**Menus**

Click on the icon to read descriptions for every menu item.

**Frequently Asked Questions**

Click on the icon for answers to the most commonly asked questions.

**Font Installer**

Click on this icon for instructions on installing the fonts.

**Kudo Browser Interface**

Click here for an overview of the features found in the Kudo Browser software.

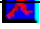
**Usage Rights and Restrictions**

Information on your rights and restrictions in using the images and information about Expert Software and Imageline.

**Product Support**

All Expert Software customers in need of product assistance can receive free support Monday through Friday from 9:00 AM to 5:00 PM Eastern Standard Time.

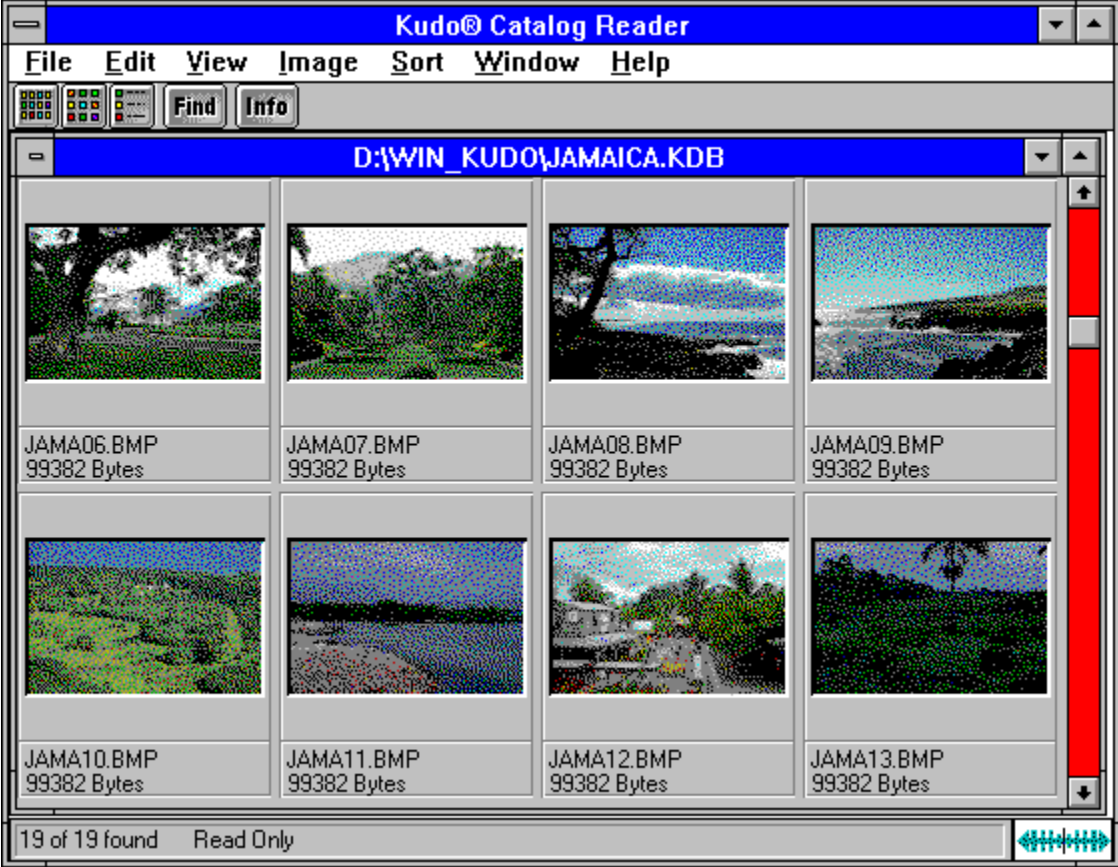
For Help on **Windows Help** click here 

For Help using Expert's help system click here 

Kudo Browser Interface

To select any of the help lessons, click with the mouse when you see the  cursor.

Kudo allows you to view your image thumbnails in three ways: Gallery, Small Gallery, and List views. This is a typical Kudo Image Browser window. The catalog selected is being displayed in the Gallery View. (Please note: the Kudo Window displayed below is an example and may not reflect your onscreen images.)



Using Kudo Browser

To select any of the help lessons, click with the mouse when you see the  cursor.

The Kudo Image Browsers are catalogs of images in various distinct categories. Each category is a separate catalog. Kudo catalogs the image files using thumbnails. Think of a thumbnail as a miniature photo of the image file. It looks like the file, but it's a replica that takes up very little memory. Kudo uses the thumbnail in its catalog and leaves the image file, untouched, in its original form and location. With these compact thumbnails, Kudo catalogs the image files in a convenient, accessible way.

The thumbnails provide a visual reference for each image file. Kudo adds information, such as the original file's name, location, size and file type, to complete the catalog.

Expert recommends that the .WMF file format be used for the following categories:

- Borders
- Cards
- Corners
- Tags

The .WMF file format will produce a clearer resolution and allow optimal resizing capabilities. To use the .WMF images, go to the **D:\content\wmf** directory (where **D** is the letter of your CD-ROM drive).

Note: You must have an application that allows the use of .WMF file types, such as Microsoft Word.

[See Also:](#)

- [The Kudo Image Browser Window](#)
- [Menu](#)
- [Sorting](#)
- [Riffle Feature](#)
- [Drag and Drop](#)
- [Keyboard Short Cuts](#)

Menus

To select any of the help lessons, click with the mouse when you see the  cursor.

File Edit View Image Sort Window Help

File Menu

To select any of the help lessons, click with the mouse when you see the  cursor.

File Edit View Image Sort Window Help

File

<u>O</u> pen...	Ctrl+O
<u>C</u> lose	Ctrl+W
<u>P</u> rint... Printer Setup...	Ctrl+P
<u>E</u> xit	Alt+F4

The File menu contains commands for accessing and printing the images.

This option will close the currently open browser file, but will keep the browser program on. To close a browser file and turn the browser program off simultaneously, use the Exit option in the file menu.

This option will give you the standard Windows Open Dialog box. From this box you may open other browser files with the .KDB extension on them.

Use the standard Printer Setup and Print commands to print part or all of your catalog. The Print feature always prints the current selection of thumbnails. For example, to print all thumbnails in a catalog, choose Image-Find All to find everything, then choose File-Print.

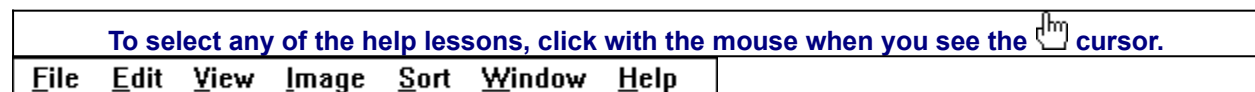
To print thumbnails with file name and size only, select the Gallery View prior to printing your catalog. Printing a catalog in Small Gallery View prints the maximum number of thumbnails per page. To print thumbnails with complete information, including file location, select List View and then print the catalog. Printing a catalog in the Gallery View, Small Gallery View and List View buttons allow you to toggle between views. Switch between views by clicking on the view button you prefer. List View provides more text information on images, but prints fewer thumbnails on each page.

Printer Setup gives options to select available printers and change their options.

1. Select a printer and port.
2. Click on Setup to open the Setup window and choose the print quality, paper orientation and size.
3. From the Setup window, click on Options to choose additional printer specific options.
4. Click on OK on each window to accept the changes.

The Exit command closes the open catalog and then closes Kudo.

Edit Menu




Edit**Copy Text****Copy Thumbnail Ctrl+C**

The Copy Text option is always grayed-out. Only the Copy Thumbnail option is available.

The Copy Text option is always grayed-out. Only the Copy Thumbnail option is available.

Copy Thumbnail copies the selected thumbnail in the currently active catalog. To retrieve the object from the clipboard, choose Edit-Paste from the menu of the target application.

View Menu

To select any of the help lessons, click with the mouse when you see the  cursor.

<u>F</u> ile	<u>E</u> dit	<u>V</u> iew	<u>I</u> mage	<u>S</u> ort	<u>W</u> indow	<u>H</u> elp
--------------	--------------	--------------	---------------	--------------	----------------	--------------

View

<u>S</u> mall Gallery	Ctrl+S
<u>G</u> allery	Ctrl+G
<u>L</u> ist	Ctrl+L

The View menu allows you to choose from three viewing options.

The Small Gallery View uses the same layout as Gallery, but with much smaller images, allowing the user to view more images at once. Click on the Info button to view detail about the selected thumbnail. The Small Gallery View, Gallery View and List View buttons allow you to toggle between views. Switch between views by clicking on the view button you prefer.

The Gallery View uses a grid style layout showing several thumbnails and their file type at once. Click on the Info button to view detail about the selected thumbnail.

The Gallery View, Small Gallery View and List View buttons allow you to toggle between views. Switch between views by clicking on the view button you prefer.

List View uses a vertical layout with fewer thumbnails in the window, but with more information about each file. The list view shows the thumbnails in a vertical column. This program does not provide additional information in the notes section, therefore the second vertical column in the list view will always be empty.

The List View, Gallery View and Small Gallery View buttons allow you to toggle between views. Switch between views by clicking on the view button you prefer.

Image Menu



Image		
<u>D</u> isplay Original		Ctrl+E
Get <u>I</u> nf <u>o</u>		Ctrl+I
<u>F</u> ind		Ctrl+F
Find <u>A</u> ll		Ctrl+A

The Image menu provides you options on finding, previewing and getting information for your selected thumbnail.

Kudo maintains a link between the thumbnail image in the catalog and the original file. Use the Preview option to preview the original image file in a full-sized window.

1. Select the thumbnail you wish to preview.
2. Choose Image-Display Original.
3. Kudo will find the original image file and display it in a full-sized window.
4. Double-click on the Control menu box (the hyphen-shaped box in the upper left corner of the window) to exit the preview window.

To preview other image files, simply click on their thumbnails while the Image Preview window is open. On some systems Kudo may need help finding the original image. If you see the dialog box (shown below) enter in the correct letter of your CD-ROM drive and click on OK. Kudo will now be able to find the original images.



Get info gives you quick access to a thumbnail's information. This option tells you the file name, volume, size, date created, location and any notes attached to the thumbnail.

Note: Only the name and size will be distinct for each.

To display a thumbnail's information:

1. Select a thumbnail.
2. Choose Image-Get Info.
3. Kudo will display the information in the floating window, Image Information.
4. Double-click on the control menu box (the hyphen-shaped box in the upper left hand corner of the window) to exit the floating window.

Note: if you edit the information in this dialog box, it will not be saved because it is being read from the CD-ROM.

Use the Find feature to search the catalog for thumbnails with specific characteristics. Kudo searches the catalog and displays the thumbnails that were identified in the search. All other thumbnails are hidden from view.


When you select the Find button (or choose Image-Find), Kudo displays the Find Image dialog box.

1. Use the first combo box to tell Kudo which thumbnail characteristic it should search. You can search by name, size, date modified, notes or location. *Note: Only searching by name or size will produce a distinct find.*

2. Use the next combo box menu to tell Kudo how to search the catalog. The selections in this combo box will become available after you make a selection in the first combo box.
3. Use the edit text box to tell Kudo for what words or information to search. Wild card characters such as * or ? are not necessary.
4. Click on Find.

Find All searches for and displays all thumbnails in the active catalog. This feature is also used to restore all thumbnails after a Find operation. Find All is equivalent to executing a Find Everything using the Find button.

Sort Menu

To select any of the help lessons, click with the mouse when you see the  cursor.



The Sort menu allows you to sort thumbnails according to the certain criteria. **Note: Only sorting by name and size will produce a unique sort; all other characteristics are identical for all.**

Sorts by eight character file name.

Sorts by size of the actual image file (bytes).


Alphabetically groups thumbnails by their image type (extension).

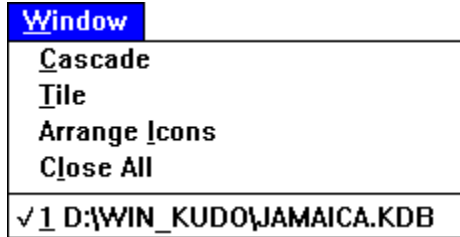
Sorts by date the image file was last modified.

Sorts by image file's location pathname.

Sorts by first word in the Notes Box.

Window Menu

To select any of the help lessons, click with the mouse when you see the  cursor.



The Window menu allows you to manipulate the currently displayed window.

Arranges open windows so that the title bar of each window is visible.


Arranges open windows side by side so that all of them are visible.

Arranges into rows all program-item icons for a selected group.

Closes all open catalogs.

Lists the names of currently open browsers.

Help Menu

To select any of the help lessons, click with the mouse when you see the  cursor.



The Help allows you to access credits, this help file, and the Windows help file.

Launches this help file.

Launches the Windows Help on Help File.

Launches the Kudo Image Browser About box.

Find Button

Use the Find feature to search the catalog for thumbnails with specific characteristics. Kudo searches the catalog and displays the thumbnails that were identified in the search. All other thumbnails are hidden from view.

When you click on the Find button (or choose **Image-Find**), Kudo displays the **Find Image** dialog box.

1. Use the first combo box to tell Kudo the thumbnail characteristic it should search. You can search by name, size, date modified, notes or location. *Note: Images in a catalog will only have a distinct name and size. All other characteristics are the same for all images.*
2. Use the next combo box menu to tell Kudo how to search the catalog. The selections in this combo box will become available after you make a selection in the first combo box.
3. Use the edit text box to tell Kudo for what words or information to search. Wild card characters such as * or ? are not necessary.
4. Click on Find. *Note: When you exit from the catalog and reopen it, all images in the catalog will be found.*

Info Button

The Info button gives you quick access to a thumbnail's information. This option tells you the file name, volume, size, date, location of file and any notes attached to the thumbnail.

Note: The date, volume and notes will contain the same information for all images.

To display a thumbnail's information:

1. Select a thumbnail by clicking on it.
2. Click on the Info button.
3. Kudo will display the information in a floating window, **Image Information**.
4. To close the window, double-click on the control menu box (the hyphen-shaped box in the upper left corner of the window).

Note: if you edit the information in this dialog box, it will not be saved because it is being read from the CD-ROM.

Riffle Feature

The Riffle feature displays the selected catalog's thumbnails one at a time in the lower right corner of the main window.



Control the Riffle speed and direction by holding down the left mouse button and dragging the control bar from the center to the left or right of the Riffle Control. Kudo will advance through the catalog until you release the control or until it reaches either end of the catalog.

When the mouse button is released or the control bar is returned to the center position, Kudo stops near the thumbnail that you chose and displays the surrounding thumbnails. Your reactions may be slower than Kudo's Riffle feature, so when you release the Riffle control, you may have to select a thumbnail that is a few frames ahead of the one you wanted.

Status Bar

The Status Bar displays the number of thumbnails currently displayed out of the total number of thumbnails contained in the active catalog.

For example, the active catalog contains 100 thumbnails. After executing the Find feature, only 35 thumbnails met the search criteria. The catalog window will only display the 35 found thumbnails and the Status Bar will display "35 of 100 found."

To restore the catalog to the full 100 displayable thumbnails, use either the Find All option from the Image Menu or find "Everything" using the Find button.

Sorting

When you open a catalog, Kudo lists the thumbnails according to when they were added to the catalog. Use the Sort menu to list the thumbnails by file name or size. You can sort the catalog using the same criteria found in the Find feature.

Sort and Find use the same criteria but they affect the catalog differently. With Find, you use the criteria to determine which thumbnails Kudo should display and which it should hide from view. With Sort, you re-arrange the thumbnails that are displayed.

When you close and re-open the catalog, Kudo shows all the thumbnails in their original order.

To sort your catalog:

1. Select a sorting criteria from the Sort menu (name or size).
2. Kudo will automatically re-arrange the thumbnails and display them in their new order.

Note: Only sorting by name or size will produce a unique sort.

[See Also:](#)

- [Sort Menu](#)

Drag and Drop

There are three methods for placing an image from a Kudo Catalog into a document:

1. Drag and Drop; or
2. Copy and Paste; or
3. You can also, of course, note the file name and location and then insert the image from within the target application.

Kudo takes advantage of Windows technology (DDE and OLE 2.0) which allows you to Drag and Drop images onto all popular graphics applications. When you Drag and Drop from your Kudo catalog to an open document, Kudo will find the original image file and place it in the document of selected desktop publishing and other page layout applications, with pinpoint accuracy.

To Drag and Drop a thumbnail to an open document:

1. Select the thumbnail.
2. Hold down the mouse button and drag it to the open document.

To Copy and Paste a thumbnail, refer to [Copy Thumbnail](#).

Drag and Drop can be used from Kudo Image Browser onto the following applications:

- All graphics applications that support Drag and Drop from the File Manager. This includes virtually all leading applications.
- All graphics, desktop publishing, and multimedia applications that are OLE 2.0 clients. OLE 2.0 clients provide pinpoint accuracy when dropping onto a page layout.
- Kudo includes Place Modules for the following applications that are not OLE 2.0 clients, but could benefit from Drag and Drop with pinpoint accuracy:
 - QuarkXPress version 3.12, 3.2 and 3.3
 - Aldus PageMaker version 4.2 and 5.0
 - Microsoft Word version 2.0*
 - Word Perfect 6.0

**Note: For Microsoft Word users, Word will indicate that you can drop the image only when the cursor is over the Word application toolbar or that status bar (along the bottom of the window). When the image is dropped, it will be inserted at the exact location of the Word "I-beam" (insertion point). Release the mouse button and Kudo will find the image and place it into the document.*

Keyboard Short Cuts

File Menu

Print	Ctrl+P
Exit	Alt+F4
Close	Ctrl+W
Open	Ctrl+O

Edit Menu

Copy Thumbnail	Ctrl+C
----------------	--------

View Menu

Small Gallery	Ctrl+S
Gallery	Ctrl+G
List	Ctrl+L

Image Menu

Display Original	Ctrl+E
Get Info	Ctrl+I
Find	Ctrl+F
Find All	Ctrl+A

Help Menu

Index	F1
-------	----

See Also:

- [Menu](#)

How to use Expert's Help System


To select any of the help lessons, click with the mouse when you see the  cursor.


Expert help uses a visual system for providing you with information on the different screens and features of this program.

 To obtain help on any topic, click on the [Help](#) menu from anywhere in the program or on the



icon. Doing so will bring up the appropriate help topic for the current screen that you are on.


 Most of the major screens and dialog boxes in this program are reproduced in miniature form in this help file. As you pass the mouse cursor over the image, the arrow-pointer will change shape to that of a hand

 indicating that you can click on that area. (This is called a “hotspot.”) For information on any field, button, hotspot, or feature, simply click on the area you are interested in and a pop-up description will appear or it will jump you to that specific topic. Occasionally, you will see the Expert “X” (

) in some portions of the help file preceded by “click here;” it will be a jump to another topic or location in the help file.

 The pop-up or jump description may consist of up to 3 parts. They include:

1. Definition and/or general information about the item you have selected.
2. Action to take. Any instructions or options available for the topic.
3. A link (usually in **green**) to a related topic. If further information is available for the item you have selected, the link will take you to the new topic of interest.

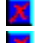

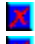






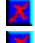
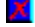
 Another way of quickly accessing information for a particular topic is through the use of the glossary buttons located in the non-scrolling region at the top of every help screen. Clicking on each letter will provide you with a quick alphabetized index listing in a pop-up box.

Product Support

To select any of the help lessons, click with the mouse when you see the  cursor.

Your purchase of an Expert product includes free product support to help you get the most out of your software. All Expert products are thoroughly tested and come with a **Help** file that, in most cases, will answer many of your questions.

If you are having problems starting or running the program, please feel free to give us a call. We can be reached at (305) 567-9996, Monday through Friday, 9:00AM to 5:00PM EST (Eastern Standard Time). When you call, you should be at your computer. Be ready to give the Product Support Specialist the following information:

-  The 10-digit program version number from the front of your program CD.
-  The version of DOS that is installed on your computer. (You can determine the version by typing VER at the DOS prompt.)
-  The version of Windows installed on your computer.
-  The type of hardware you are using:
 -  Brand of computer you own
 -  CPU type (386, 486, Pentium)
 -  Video type (EGA, VGA, Super VGA)
 -  Model and type of printer
 -  Model and type of video card (ATI, Speedstar, etc.)
-  The exact wording of any messages that appeared on the screen.
-  What happened and what you were doing when the problem occurred.

We encourage Windows 3.1 (or MS-DOS 6.X) users who need product support to print an MSD report. Have it available for the Product Support Specialist who answers your call. You will find the MSD (Microsoft Diagnostics) program in either the Windows or the DOS directory.

Usage Rights and Restrictions

You may:

- Copy the images from the CD onto your hard drive and use them from that computer.
- Use, copy, modify and publish any of the digitized images contained in the program for use in advertisements; newsletters; public private and business presentations; and other uses provided that the actual images are not being sold. *For example, you can use the image(s) as an embedded image(s) in the program such as a background screen, but **not** as a program file, such as a .PCX or other picture format.*
- Use the images to create calendars, greeting cards, posters or other items which are not intended for sale.
- Use the images as part of a software product, provided the user **does not** have access to the actual image files.

You may not:

- Make copies, film negatives or positives, or magnetic copies of the images of the CD for sale, rental, lease, or transfer to another person or entity, other than the permitted user.
- Use the images to create calendars, greeting cards, posters or other items which are intended for sale. For example, if you created a sports calendar using images found in the CD and intended to distribute and sell these calendars, this would be a violation of the license agreement.
- Distribute any of the images as part of any software product(s), in electronic file formats such as .PCX, .TIFF, .BMP, etc.
- Copy the program(s), or alter, modify or adapt them.
- Copy, decompile, disassemble, modify, translate or create derivative programs based on the applications embedded in the program(s).
- Use or alter, in whole or in part, a digitized image, in any manner for a pornographic use.

Acknowledgments

This program was made with help from the following:

- Imageline, Inc. and
- Imspace Systems Corp. (Kudo® and Kudo Image Browsers® are registered trademarks of Imspace Systems Corp.

Thumbnail

A thumbnail is a small picture of your original file. Thumbnails allow you to preview your image before selecting it. Select a thumbnail by clicking on it.

Double-clicking on a thumbnail will open the paint program you have associated with the image extension. If no association exists, nothing will happen.

Image Information

This area displays the file name and size of the original image.

Frequently Asked Questions

Q: How do I import the images into my application?

A: By following the steps necessary for that application, [click here for specific applications](#).

Q: How do I save the text entered under the List View note field?

A: This program was designed to view thumbnail images rather than to create new ones. If the program allowed for the creation of new browsers, then the note field would save notes or information entered in the field.

Q: How come when I double-click on an image nothing happens?

A: Verify that the selected image is being associated with a BMP or PCX extension or any other compatible paint program.

Q: How can I easily edit the image?

A: If you double-click on an image's thumbnail it will be opened in Paintbrush or any other paint program associated with a BMP or PCX extension.

Q: What do I do when I get the error message file not found?

A: To preview other image files, simply click on their thumbnails while the Image Preview window is open. On some systems Kudo may need help finding the original image. If you see the dialog box (shown below) enter in the correct letter of your CD-ROM drive and click on OK. Kudo will now be able to find the original images.



Importing Images to Various Applications

Adobe PageMaker® for Windows

Aldus Persuasion® for Windows

Broderbund Print Shop Deluxe®

Harvard Graphics® for DOS

Harvard Graphics® for Windows

Lotus Ami Pro® 3.0

Microsoft Paintbrush®

Microsoft Powerpoint® 4.0

Microsoft Publisher®

Microsoft Word® 2.0

Microsoft Word® 5.0 for DOS

Microsoft Word® 6.0

Microsoft Works®

Microsoft Works® 3.1

WordPerfect® 5.1

WordPerfect® 6.0

WordPerfect® 6.1

1. Open an existing PageMaker document, or choose New from the File menu.
2. Choose Place from the File menu.
3. In the dialog that appears, change the drive and directory to locate the image.
4. Select the image you want and click OK.
5. Place the cursor anywhere on the document, then click.

If you have any questions, call PageMaker technical support at 206/628-4531.

1. Open an existing Persuasion document, or choose New from the File menu.
2. Choose Slide from the View menu.
3. Choose Place from the File menu.
4. In the dialog that appears, change the drive or directory to locate the ClickArt file.
5. select the image you want and then click OK.
6. Place the cursor in the document, then click.

If you have any questions, call Persuasion technical support at 206/628-4533.

1. Open an existing Harvard Graphics Chart, or create a new chart.
2. Press F6 until the main menu appears.
3. Select draw from the Main Menu.
4. Select the Import Bitmap Icon (it appears as a tree icon on the Tool palette).
5. In the dialog that appears, change the drive and directory to locate the ClickArt directory.
6. Select the image you want.
7. Select OK.

If you have any questions, call Harvard Graphics technical support at 408/988-4005.

1. Create a Harvard Graphics presentation, or open an existing presentation.
2. Choose Import from the File menu.
3. In the dialog that appears, choose a file format from the File format drop-down list.
4. Change the drive and directory to locate the ClickArt file.
5. Select the image you want and click OK.

If you have any questions, call Harvard Graphics technical support at 408/988-4005

1. Open an existig Word document, or create a new document.
2. Select the Library command.
3. Select the Link command.
4. Select the Graphics command.
5. Type the path and ClipArt file name you want to use.
6. Enter the file format.
7. Press ENTER.

If you have any questions, call Word technical support at 206/454-2030.

1. Open an existing WordPerfect 6.0 document, or choose New from the File menu.
2. Choose Figure from the Graphics menu.
3. Type the path and ClickArt file name you want to use.
4. Select OK.
5. To view the image, select Print Preview from the File menu.

If you have any questions, call WordPerfect technical support at 800/541-5096.

1. Open an existing Ami Pro document, or choose New from the File menu.
2. Choose Import Picture from the File menu.
3. Type the path and ClickArt file name you want to use.
4. Select OK.

If you have any questions, call Lotus technical support at 800/831-9679.

1. Open an existing Word 2.0 document, or choose New from the File menu.
2. Choose Picture from the Insert menu.
3. Type the path and ClickArt file name you want to use.
4. Select OK.

If you have any questions, call Word technical support at 206/454-2030.

1. Open an existing Word 6.0 document, or choose New from the File menu.
2. Choose Picture from the Insert menu.
3. Type the path and ClickArt file name you want to use.
4. Select OK.

If you have any questions, call Word technical support at 206/454-2030.

1. Open an existing Publisher document, or choose New from the File menu.
2. Choose Import Picture from the File menu.
3. Type the path and ClickArt file name you want to use.
4. Select OK.

If you have any questions, call Microsoft technical support at 206/454-2030.

1. Open an existing Works document, or choose New from the File menu.
2. Choose Object from the Insert menu.
3. Click on the Create from File radio button option and then click on Browse.
4. Type the path and ClickArt file name you want to use.
5. Select OK.

If you have any questions, call Microsoft technical support at 206/454-2030.

1. Open an existing Works 3.1 document, or choose New from the File menu.
2. Choose Drawing from the Insert menu.
3. Choose Insert Picture from File menu.
4. Type the path and ClickArt file name you want to use.
5. Select OK.

If you have any questions, call Microsoft technical support at 206/454-2030.

1. Choose Open from the File menu.
3. Type the path and ClickArt file name you want to use.
4. Select OK.

If you have any questions, call Microsoft technical support at 206/454-2030.

1. Open an existing Powerpoint 4.0 document, or choose New from the File menu.
2. Choose Picture from the Insert menu.
3. Type the path and ClickArt file name you want to use.
4. Select OK.

If you have any questions, call Microsoft technical support at 206/454-2030.

1. Open an existing Print Shop Deluxe document, or choose New from the File menu.
2. Choose Add from the Object menu.
3. Type the path and ClickArt file name you want to use. (note: This application accepts .BMP, .WMF, .TIF, or EPF file types only.)
4. Select OK.

If you have any questions, call Broderbund technical support at 800/521-6263.

1. Open an existing WordPerfect 5.1 document, or choose New from the File menu.
2. Choose Figure from the Graphics menu.
3. Choose Retrieve and then type the path and ClickArt file name you want to use.
4. Select OK.

If you have any questions, call WordPerfect technical support at 800/541-5096.

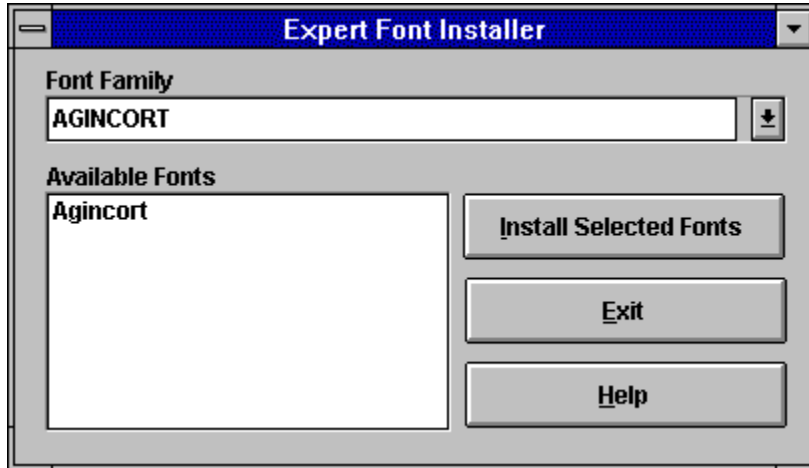
1. Open an existing WordPerfect 6.1 document, or choose New from the File menu.
2. Choose Image from the Graphics menu.
3. Type the path and ClickArt file name you want to use.
4. Select OK.
5. To view the image, select Print Preview from the File menu.

If you have any questions, call WordPerfect technical support at 800/541-5096.

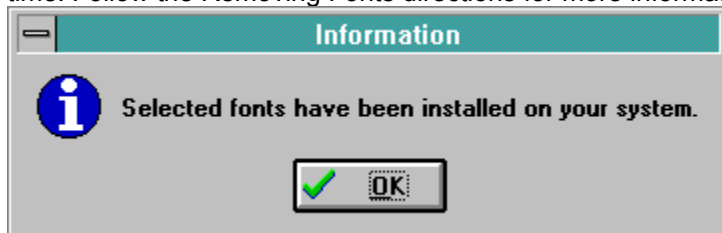
Fonts Installation

This Expert clip art product includes an easy to use font installer. Just click on the drop-down list box and select a Font family. All the fonts available for that family will be displayed in the larger box.

When you've chosen the fonts you want to install, select the font and then click on the **Install Selected Font** button.



To make multiple font selections, press the **CTRL** key while you click on the fonts you want to select. Please note: It is recommended that you do NOT have more than 20 fonts installed on your system at one time. Follow the Removing Fonts directions for more information on removing fonts.



[Windows 95 users: After you have installed the fonts, click on the Fonts icon in Control Panel to update the fonts folder. This should make all fonts visible in application.]

[Click here to choose a font family.](#)

These are the fonts available for the font families. Font families can have from 1 to 10 fonts.

Clicking here will install all the selected fonts to your system.

This exits from the Font Installer.

This launches the help file.

