



Upload/Download Time Estimate

The Easy Uploads Time Estimate will ESTIMATE the time/\$ required to Upload/Download files (based on the total file size). Estimates are given for 2400, 9600, 14400, 19200, and 28800 Baud.

Simply enter the number of bytes you're transferring, and let Easy Uploads Time Estimator do the rest. Since there are many factors that can influence the *actual* time required to upload your file, I've included a Conversion Factor, so you can more accurately estimate the upload time based on how, when, and with what, *You* upload/download *Your* files.

Also included is the ability to calculate the Total time of multiple uploads of the same file(s). Simply enter the number of times you're going to upload the file(s), and let Easy Uploads do the time math.

Finally, enter the \$/Hr. your BBS charges for access time to download the file(s), and Easy Uploads will determine the total cost.

That's it! What more needs be said?

NOTE: The Conversion factor and \$/Hr will be saved between sessions so you don't have to remember them.

Copyright 1995 by P. Scott Antony



Easy Uploads Time Estimator

Welcome to the Easy Uploads Time Estimator. This FREEWARE utility is my Thank You for all the support I've received for the Shareware version of Easy Uploads. If you enjoy this utility, and find it useful, I hope you'll give the full Easy Uploads program a try and see all that it can do in addition to this time estimate.

The full shareware version of Easy Uploads can be found in many forums on CompuServe, however you'll always find it in the WinCIM and CSNav Support forums (GO WCIMSUPPORT, and GO CSNAVSUPPORT respectively). Search for EASYUP.ZIP, or contributor 74002,2373.

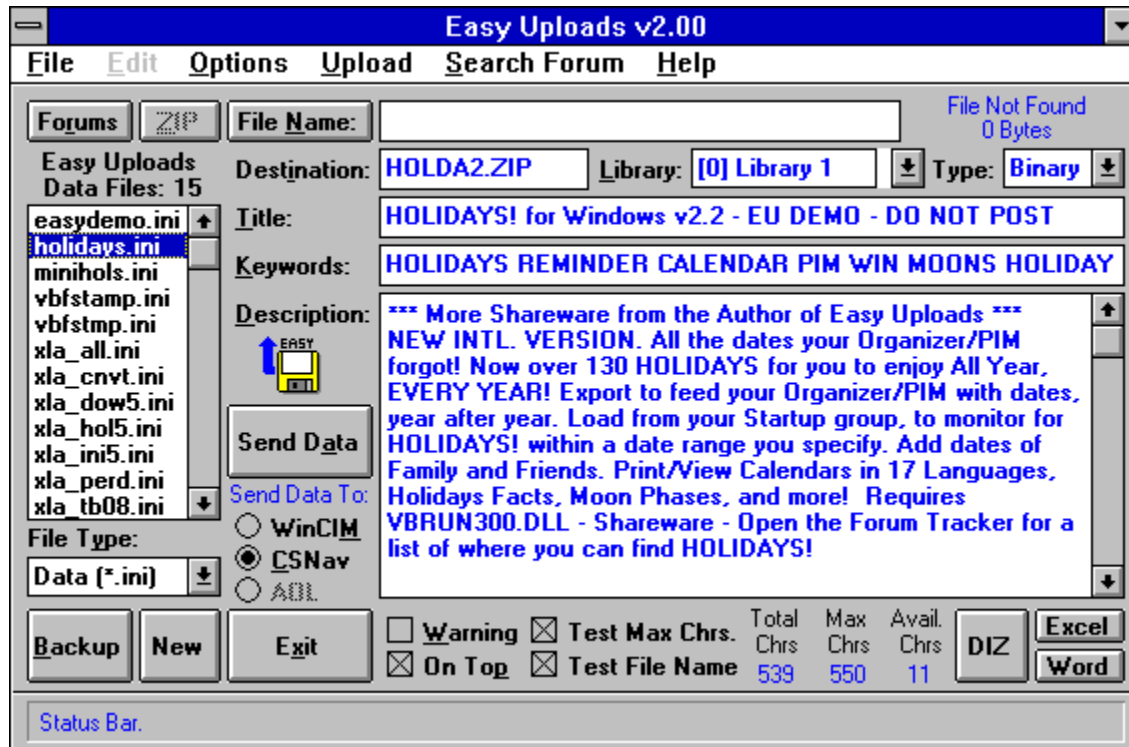
[Warranty Disclaimer](#)

[Using the Time Estimate](#)

[What is Easy Uploads?](#)

Copyright 1995 by P. Scott Antony

What is Easy Uploads?



Easy Uploads is a Windows utility to help save you time and money when uploading ("Contributing") files to CompuServe Libraries using WinCIM or CSNav. Easy Uploads also helps insure that Descriptions, Titles, and Keywords for your files are consistent across all the Libraries you decide to place them on.

Additional Features:

- Save your Descriptions as DIZ files (DIZ - Acronym for: Description in ZIP).
- View the contents of your source ZIP file.
- Note where you've uploaded your files with the integrated Forum Tracker.
- Spell check your descriptions with MS Excel or Word.
- Print Description and Forum Tracker data.

Why Easy Uploads?

I'm not sure how you've been doing it, but until now, every time I wanted to upload a new file, or an update to an existing file, I was always spending way too much time typing, and would wrack my brain trying to remember the description I used the last time.

Sure, I would use Notepad, or Write to compose my thoughts beforehand, but there was never any way to get all the data over to the File Description in one clean shot, and Pasting was really difficult (since the Library Contribute dialog box is *modal* [focus cannot shift until the dialog is closed], you cannot get at Paste in the Edit menu). By the time I was ready to upload the file, I inevitably had one or two overlooked typos, and had spent a good 5 minutes getting everything just right. **Forget it!**

So I thought I'd buy CS Navigator, so I wouldn't have to retype all the data every time. I'd create my script once, and then forget about it, because CSNav lets you do *everything* off line, right? WRONG! While still a great program overall, much to my surprise, CSNav DOES NOT save the data for

Contributing Files with your Script. You must still type your Title, Keywords, Descriptions, etc. every time.
Forget it!

Don't get me wrong, they're both great programs, but I have a lot of files to update, and I don't want to do all that typing! I suppose it would have been easier if I could have found something already on the Shareware market, but none could be found, so I built my own. As probably one of its biggest users, you can be sure that I will continue to improve it, until it's as easy as it can be! Your suggestions to help attain that goal are always appreciated.

The Solution to My Problems

I created Easy Uploads. With Easy Uploads, you create a simple text file with all your upload data, before that scary "Contribute" dialog confronts you! This gives you a chance to spell check your work, and give it a good going over, without the pressure of being on-line, and incurring connect charges, or constantly fiddling with the Description. The text file uses the Windows INI format, so it's easy to understand and create. In fact, all the data for the Easy Uploads descriptions on CompuServe Forums were entered using Easy Uploads (obvious right, I mean I certainly wouldn't create this great utility, and then type in all the data!). Most uploads required less than 10 mouse clicks, and were begun within 10 seconds of entering a Forum with WinCIM, and filling the Contribute dialog in CSNav is a snap!

For WinCIM

Once you get on-line, and in a Forum Library, you can start uploading your file within seconds of beginning connect charges \$\$\$\$. With Easy Uploads, once you're in a Forum, you can upload a file with as little as **three** clicks of the mouse!

For CSNav

CSNav already helps you save \$\$\$ in connect charges, however by using Easy Uploads you can quit busting your knuckles typing your descriptions every time.

Soon to Come:

Easy Uploads will also work with America Online. This feature is currently under construction, and will appear in a future version.

Copyright 1995 by P. Scott Antony

Warranty Disclaimer

Copyright/License/Warranty

Easy Uploads Time Estimator - Copyright © 1995 by P. Scott Antony.

All rights reserved.

Contact me at: 74002.2373@CompuServe.com

or P.O. Box 11047

Shorewood, WI 53211

License Agreement

You should carefully read the following terms and conditions before using this software.

Freeware Version

The Easy Uploads Time Estimator is distributed as Freeware. You are hereby licensed to use this software and distribute it in its entirety, however all rights and ownership remain with P. Scott Antony.

Distribution

You are hereby licensed to make as many copies of the Freeware version of this software and documentation as you wish; give exact copies of the original Freeware version to anyone; and distribute the Freeware version of the software and documentation in its unmodified form via electronic means.

You are specifically **prohibited** from charging, or requesting donations, for any such copies, however made; and from distributing the software and/or documentation with other products (commercial or otherwise) without prior written permission, with one exception: Disk Vendors approved by the Association of Shareware Professionals are permitted to redistribute Easy Uploads, subject to the conditions in this license, without specific written permission.

Governing Law

This agreement shall be governed by the laws of the State of Wisconsin.

Disclaimer of Warranty

THIS SOFTWARE AND THE ACCOMPANYING FILES ARE SOLD "AS IS" AND WITHOUT WARRANTIES AS TO PERFORMANCE OF MERCHANTABILITY OR ANY OTHER WARRANTIES WHETHER EXPRESSED OR IMPLIED. Because of the various hardware and software environments into which Easy Uploads may be put, NO WARRANTY OF FITNESS FOR A PARTICULAR PURPOSE IS OFFERED. Good data processing procedure dictates that any program be thoroughly tested with noncritical data before relying on it. The user must assume the entire risk of using the program.

Copyright 1995 by P. Scott Antony

