



# Software Catalog

## Products

[Bit Recycler](#)

[Desktop Coffee Mug](#)

[Desktop Cigarette](#)

[Desktop Ghost](#)

[Desktop Pumpkin](#)

[Elvis Detector](#)

[Mouse Warp v2.0](#)

[Mouse Odometer](#)

[Name of the Game](#)

[Pop Charts](#)

[Presto Saver](#)

[Resource Monitor](#)

[Swift Access v1.5](#)

[Video Benchmarks](#)

[Non-Productivity Pack](#)

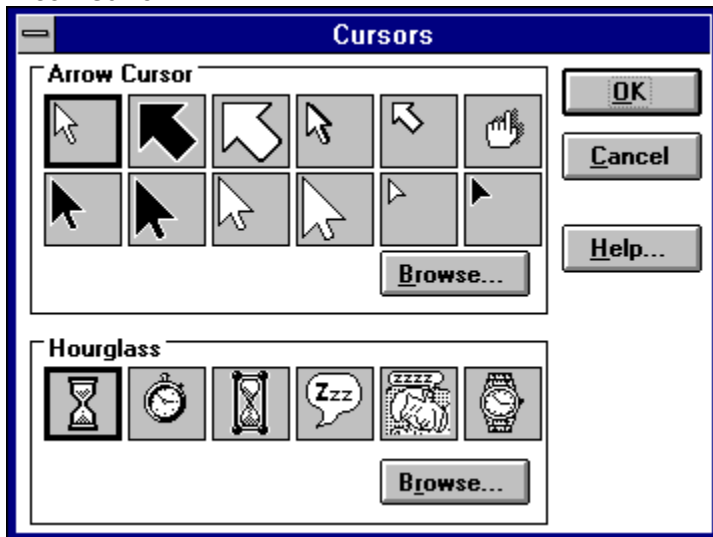
[Pricing Information](#)



## Mouse Warp v2.0

Mouse Warp is a shareware Windows mouse enhancement utility offering more functionality than expensive commercial products. With Mouse Warp, your meek mouse assumes greater abilities such as:

- Select new arrow and hourglass cursors from an extensive library of shapes. Mouse Warp's cursor library include a variety of regular and novelty cursors as well as lefthanded and XOR cursors
- Use any Windows icon as your mouse cursor. Create your own custom cursor using any icon editor.



- Assign useful functions to those unused right and middle mouse buttons such as: Close Application, Exit Windows, Double Click or start one of the Windows accessories.
- After several seconds of mouse inactivity Mouse Warp will start blinking the cursor so when you come back to your computer you can find it instantly.
- Move the cursor, in any application, using only the keyboard. Version 2.0 can serve as a 100% mouse replacement so you can use Windows even if you forgot the mouse.
- Let the cursor wrap around the edges of the screen so if you go off the left side of the screen, you come back in on the right side. Great for trackball users.
- A mini display window shows the exact location of the cursor in pixels. Combined with keyboard mouse movement, graphic artists have precision mouse control.
- Start the current Windows screen blanker with just one click of the mouse.
- Hide the Mouse Warp icon so it doesn't clutter up your desktop.

Full on-line help is included for every dialog box.

See Also:  
[Pricing Information](#)



## **Presto Saver**

Presto Saver is a tiny utility that lets you instantly activate the default Windows screen saver. Instead of waiting for the default delay time or messing around in the Control Panel, you can start the screen saver and leave your desk knowing that your screen is protected from other people's eyes.

See Also:

[The Non-Productivity Pack](#)



## Swift Access



Swift Access provides you with a button bar of icons representing your most frequently used Windows applications. To start one of them, just double click on the icon. Swift Access saves you the time that it takes to root around in the Program Manager just to find an application like the Notepad.

By default, Swift Access displays icons representing the most frequently used Windows applications and accessories. The top icon represents the Swift Access Control Panel. Double clicking on it will bring up the Swift Access dialog box where you can customize and configure Swift Access. Each icon can be repositioned by clicking on it and dragging it to the new location. Once you have them set up just perfectly you can anchor the icons to their current position and Swift Access will remember their positions from one Windows session to another. You can even tell Swift Access to keep the icons on top of all the other windows so the icons aren't obscured while you are working full screen applications.

And you have the same control over the icons as you do with the Program Manager including selection of icons from other programs and icon libraries, setting the working directory, passing parameters and defining the initial window state.

Swift Access also supports drag-and-drop. For example, to view a text file, pick it up from the File Manager and drop it on the Swift Access icon for the Notepad. Notepad will be started and the text file will be automatically loaded.

Full on-line help is provided to get you up and running with Swift Access. Swift Access saves you time and enhances your productivity.

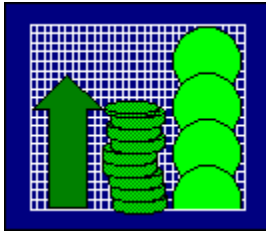
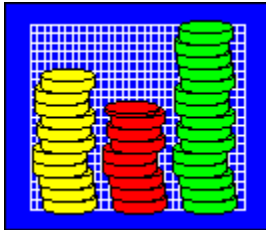
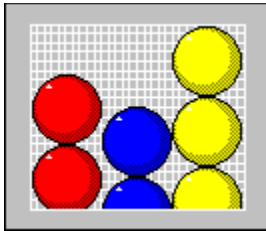
See Also:

[The Non-Productivity Pack](#)   [Pricing Information](#)

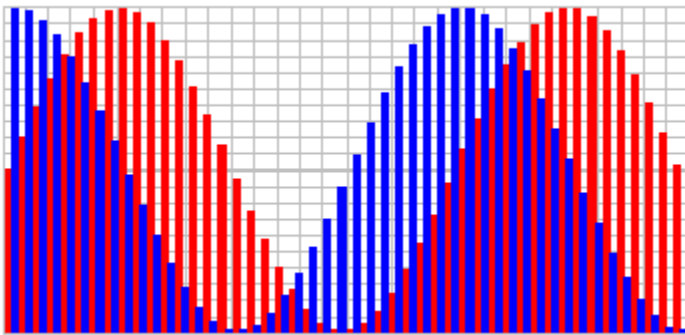


## Pop Charts

Pop Charts provides a quick and easy way to add sophisticated, accurate charts to your illustrations, memos and documents.



Pop Charts works in conjunction with your other Windows utilities by placing the charts that you make into the clipboard where you can paste them into almost any other Windows application. For instance, you can create a chart, copy it into the clipboard and then paste it right into a document that you're working on in your word processor. Or, you can paste the chart into an illustration program and add fancy text effects then print it.



If you find the Pop Charts Public Edition to be a useful product, you may be interested in purchasing the Professional Edition which has 22 bar chart types, 10 line types and 4 point types as well as more color schemes and the ability to print your charts on any Windows supported printer.

See Also:

[Pricing Information](#)



## **Elvis Detector**

The TOGGLE BOOLEANS Elvis detector is designed to sense the presence of Elvis or his spirit in your vicinity. It includes some of the most reliable Elvis detection methods gathered from supermarket tabloids over the last several years.

If you use Elvis Detector on a regular basis, you may be interested in purchasing the Elvis Detector Version 2.0. Version 2.0 contains a more sophisticated Elvis Detection algorithm and has been expanded to also detect the spirits of Roy Orbison, Rocket Robin Hood, and M.C. Hammer. Custom detectors are also available.

See Also:

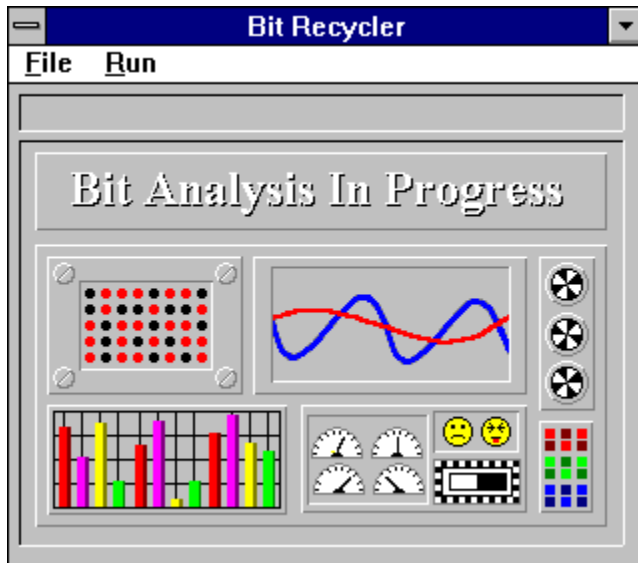
[The Non-Productivity Pack](#)  
[Pricing Information](#)



## Bit Recycler

Inside your computer are millions of little bits. Each one of those bits can be a one or a zero and as your computer runs programs each one of these bits changes its state, often thousands of times every second.

Understandably, this puts a lot of pressure on your bits and, after a period of time, some of your bits may start to wear out. The Bit Recycler is designed to reconstitute your bits, making sure that your bits are always in tip top shape.



First the bits are ground up into a bit mush, then boiled and finally new bits are stamped out. Attractive animation of the process is included.

See Also:

[The Non-Productivity Pack](#)



## **Desktop Coffee Mug**

The Toggle Booleans Coffee Mug pushes the desktop metaphor of computing further than ever before. Until now there have been notepads, card files, clipboards, and calculators on your Windows desk top, but never has there been a place to put your coffee mug.

Now you can finally pick up your coffee mug from where ever you used to keep it and put it where it belongs: on your desk top. But be careful not to knock it over...

See Also:

[The Non-Productivity Pack](#)





## Desktop Cigarette

Until now there have been notepads, card files, clipboards, and calculators on your Windows desktop. TOGGLE BOOLEANS provides the missing pieces: Desktop Cigarette and its companion program, Desktop Coffee Mug.

Desktop Cigarette:

Nicotine: 0.0 mg

Tar : 0.0 mg

CO : 0.0 mg

Warning: Smoking can reduce the life expectancy of your bits. The Programmer General recommends using the TOGGLE BOOLEANS Bit Recycler once a week for maximum bit healthiness and happiness.

See Also:

[The Non-Productivity Pack](#)



## **Desktop Ghost**

Add a little bit of 'spirit' to your Windows desktop with the Desktop Ghost. Start up the Desktop Ghost and then give him a few moments and he'll start roaming around your desktop.

See Also:

[The Desktop Pumpkin](#)

[The Non-Productivity Pack](#)



## Desktop Pumpkin

Get into the spirit of Halloween and put a pumpkin or two on your Windows desktop. Add you won't want to be without a Desktop Ghost or two to keep your pumpkins company.

See Also:

[The Desktop Ghost](#)

[The Non-Productivity Pack](#)



## **Resource Monitor**

This tiny application gives you a quick indication of the amount of resources and memory that are available to Windows.

See Also:

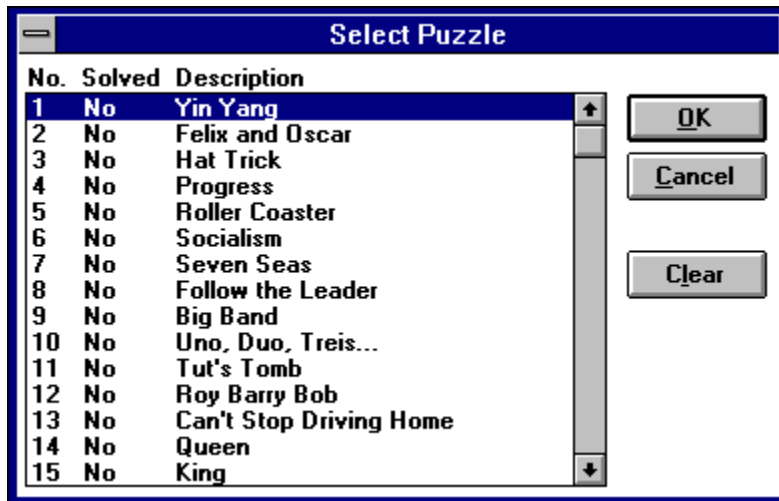
[The Non-Productivity Pack](#)



## Name of the Game

Name of the Game is a different type of card game. Name of Game actually consists of a series of card puzzles. In each puzzle you are given a series of cards and your objective is to play all your cards in the right order.

The required order is always a pattern of some sort. Some puzzles are as simple as red card, black card, red card, black card, etc. Other puzzles are more complex and some don't even use the traditional pack of fifty two cards.



The Public Edition contains a total of fifteen puzzles. If you enjoy playing Name of the Game, you may be interested in purchasing the Registered Edition which contains over 50 games.

See Also:

[The Non-Productivity Pack](#)

[Pricing Information](#)



## **Mouse Odometer**

Pointing, clicking, pointing, clicking. Have you ever wondered just how far you end up moving the mouse in a typical day? The Mouse Odometer measures your mouse mileage. You can choose from various measurement units in metric or imperial, from inches all the way up to miles. Since some mice are more responsive than others, you can also customize the Mouse Odometer to match the horizontal and vertical travel distances for your mouse.

See Also:

[The Non-Productivity Pack](#)



## **Video Benchmarks**

Video Benchmarks provides a means to measure the performance of your video board and Windows video driver. It can be especially useful for people who are thinking of buying a new computer. The ability to draw lines, filled areas, polygons and bitmaps are all rated in terms of actions per second.

See Also:

[Pricing Information](#)

## The Non-Productivity Pack

For people without access to bulletin board services, or those who have been unable to locate some of our freeware and shareware programs, we provide the Non-Productivity Pack.

The Toggle Booleans Non-Productivity Pack contains copies of all our freeware products as well as trial editions of some of our shareware programs. The Non-Productivity Pack currently contains the following programs:

- Desktop Coffee Mug**
- Mouse Odometer**
- Presto Saver**
- Resource Monitor**
- The Elvis Detector v1.0**
- The Bit Recycler**
- Swift Access Working Model**
- Name of the Game, Public Edition**
- Desktop Ghost**
- Desktop Pumpkin**
- Desktop Cigarette**

The Non-Productivity Pack is available for a minimal fee to cover the cost of shipping, handling and a bit of our time.

See Also:

[Pricing Information](#)



## Toggle Booleans Products:

<b>Product</b>	<b>Price US</b>	<b>Canadian</b>
Mouse Warp v2.0	\$20 US	\$24 CAN
Swift Access v1.5	\$30 US	\$35 CAN
Video Benchmarks v1.0	\$20 US	\$24 CAN
Name of the Game, Registered Edition	\$20 US	\$24 CAN
Pop Charts, Professional Edition	\$30 US	\$35 CAN
Elvis Detector v2.0	\$7 US	\$8 CAN
Non-Productivity Pack	\$10 US	\$12 CAN

To order, please send a check or money order of the appropriate amount to the address below. International customers, please send an international money order in U.S. dollars.

**TOGGLE BOOLEANS**  
**P.O. Box 4204, Station E,**  
**Ottawa, Ontario,**  
**Canada, K1S 5B2**

When ever you purchase one of our shareware programs, you will receive a diskette containing the latest version of the program as well as a complimentary copy of the Toggle Booleans Screen Saver which is only available to our registered customers.

Please be sure to note the product or products you wish to purchase and specify which disk size ( 3½" or 5¼") you would prefer.

