

Drag And View and Drag And View Plus Help Index

Overview

[What Is Drag And View and Drag And View Plus?](#)

[How To Use Drag And View](#)

[File Formats Supported by Drag And View](#)

[Fileman Launcher](#)

[What is Shareware](#)

[Registration form](#)

[Overseas Purchases](#)

Commands

[Launch](#)

[New Window](#)

[Goto](#)

[Find](#)

[Last](#)

[Next](#)

[Play](#)

[Open](#)

[Word Wrap](#)

[Fonts](#)

[Exit](#)

[ASCII](#)

[Hex](#)

[Viewer](#)

[Filelist](#)

[Always Visible](#)

[Close All Windows](#)

[Close](#)

[Auto View](#)

[View Files](#)

Reference

[How To Drag And Drop](#)

[ASCII](#)

[Hex](#)

[Word Wrap](#)

Open Command (File Menu)

Use this command to add a new file to the current window. Choosing this command will open a dialog box from which you can choose new a file to view. If there is a special file viewer for the file, it will be shown in its native format. Otherwise, it will be shown with either the ASCII viewer (if the file is made up chiefly of readable characters), or the Hex viewer.

When you open a file in this manner, the file will be displayed in the current window and its name will be added to the top of the "Filelist" menu.

New Window

When you click on the "New Window" button, Drag And View will open up a new window with the same file list as the current window. Choose this command when you want to view the same files in two or more windows at the same time. You can then arrange these windows to view different parts of the same file side by side or choose another file from the file list and compare the two files. You can open up as many new windows as you want, up to available memory on your computer.

Launch

Click on the "Launch" button to run the program associated with the file that you are currently viewing. If you are viewing a data file or a picture, Drag And View will query Windows to find out the name of the program that you have associated with the file. If there is an associated program, Drag And View will run that program and pass to it the file that you are currently viewing as a command line argument. For example, if you are viewing a document from Microsoft Word for Windows, Drag And View will run Word for Windows and have it load up the document that you are currently viewing. If you don't have a program associated with the file, Drag And View will not be able to run any program and will present you with a dialog box informing you of the problem.

If the file you are viewing is a program, Drag And View will run it when you choose this command.

Word Wrap (Settings Menu)

This command is only available in Drag And View's ASCII viewer. Use this command to turn word wrap on or off when viewing ASCII files. When word wrap is on, Drag And View will wrap each line at the current window width. As you expand the width of the window, Drag And View will expand the length of the lines. When word wrap is active, there will be a check mark before this command. When you turn word wrap off, the check mark will disappear.

Fonts (Settings Menu)

This command will bring up a dialog box where you can choose which font you want Drag And View viewers to use. The font that you choose will be active in all the viewers that display text except the Hex viewer.

Exit (File Menu)

Use this command to close the current window.

ASCII (View Menu)

Use this command to view a file in ASCII format.

Hex (View Menu)

Use this command to view a file in Hex format. The Hex viewer displays a file as a series of hexadecimal (base 16) numbers and ASCII characters. Each line in the Hex viewer has the starting offset into the file of the line, 16 characters of the line as hexadecimal numbers and then the same 16 characters as ASCII characters.

Viewer (View Menu)

Use this command to view a file with one of Drag And View's viewers that view the file in its native format. This will be the default if a file format is supported by Drag And View. The only reason you will need to select this command is if you changed to the ASCII or Hex viewer and now want to change back.

Goto

This button will only be active when viewing a database or spreadsheet, or in the Hex viewer.

For database viewing, this button will open up a dialog box where you can enter a specific record to go to and view.

For spreadsheet viewing, this button will open up a dialog box where you can enter a specific cell to go to.

In the Hex viewer, this button will open up a dialog box where you can enter a specific hexadecimal offset into the file that the viewer will show.

Find

This button is active in all the viewers except the graphic viewers. Use this button to search for specific text in a file. In all viewers except the viewer you can specify that your search be case sensitive. In the Hex viewer you can search in ASCII as well as hexadecimal.

Choosing this command will open up a dialog box where you can enter your search information. Choosing OK will find the first match in the file. Choosing OK each time will find each subsequent match.

Filelist (Main Menu)

The "Filelist" menu displays the names of all the files that have been dragged to the open window or opened from the file menu. The file that is currently displayed has a check before the name. Highlighting another file and pressing Enter or clicking on another file name with the mouse will display that file.

Always Visible (Drag And View Icon System Menu)

Use this command to keep the Drag And View Icon visible at all times. That way there will never be any window covering its icon. If you are running Drag And View automatically with Fileman Launcher, the Drag And View icon will always be visible when File Manager is on top so you may find the Always Visible option unnecessary. When this command is active, there will be a check before this command in the Drag And View Icon system menu. You can choose this command again to turn it off and remove the check. Drag And View will save the state of this command for subsequent sessions. So, if you close Drag And View and "Always Visible" is activated, it will also be activated the next time you run Drag And View.

Close All Windows (Drag And View Icon System Menu)

Use this command to close all the currently open Drag And View windows. Drag And View will still be running and its icon will still be displayed.

Close (Drag And View Icon System Menu)

Use this command to exit the Drag And View program. All open Drag And View windows will be closed at this time.

What is Drag And View and Drag And View Plus?

Drag And View and Drag And View Plus are programs that let you view the contents of a file or files without having to run the program that created them. Drag And View and Drag And View Plus are essentially the same program. The only difference between them is that Drag And View Plus contains additional viewers for some vector graphic formats. Drag And View is distributed as Shareware while Drag And View Plus, because of the licensing agreement from the manufacture of the vector viewing libraries, can only be gotten directly from Canyon Software and is not available for you to try out as Shareware.

Drag And View can view the files created by popular word processors, databases, spreadsheets and graphic programs in their native format or a format close enough to your native format that you can easily see what the file contains without unreadable formatting codes. You can also view any file in plain ASCII or hexadecimal format. Drag And View allows you to open multiple windows so you can easily compare files. You can search for text in any file or a hexadecimal string in the Hex viewer. You can also go to any cell in a spreadsheet, any record in a database and any address in the hexadecimal view of a file.

Drag And View is made to work with any file manager that supports drag and drop. You drag files from the file manager to the Drag And View Icon or open window to view them.

Additionally, Drag And View installs itself into Windows File Manager with Fileman Launcher. Every time that you run Windows File Manager, Drag And View will also be run automatically. Every time you exit File Manager, Drag And View will exit also.

Using Drag And View

When you run Drag And View, it will first appear as an icon on the lower left of your computer screen. You can move the icon to any position that you like and when you exit the program, it will remember that position and go there the next time that you run it.

To view files with Drag And View, you drag files from any file manager that supports drag and drop to the Drag And View Icon and Drag and View will open a window displaying those files. If you are running Drag And View with Windows File Manager, you can also click on the "Fml" menu in File Manager and then click on "View" to also view the selected files. The first file in the group that you dragged will be the one that is displayed. All the files will be listed in the window's "Filelist" menu and you can use that menu to display the other files. If you want to view two or more files in the file listing simultaneously, you can click on the "New Window" button and Drag And View will open up a new window with the same file list. You can open up as many windows this way as your computer's memory will support. You can also drag more files to any open Drag And View window and they will be added to the "Filelist" menu and the first one in the group will be displayed. The "Filelist" menu will hold up to 20 files. After 20, as you drag new files, the older ones will be dropped off the list.

The Drag And View Icon will still remain at the bottom of your screen even after you've dragged files to it and opened up a viewing window. You can continue to drag files to the icon and each time that you do, a new window will be opened.

You can click on "Auto view" in the "Fml" menu and then every time you highlight a file in Windows File Manager, Drag And View will display it. Any open Drag And View window can be closed, maximized or minimized to an icon. You can drag files to a minimized Drag And View window and it will be restored and display your files.

To exit the Drag And View program, you must choose "Close" from the system menu of the Drag And View Icon. You activate the system menu by clicking your mouse on the icon. When Drag And View exits, all the open windows will be closed. You can choose to just close all the open Drag And View windows and not exit Drag And View by choosing "Close All Windows" from the Drag And View Icon system menu.

If you are running Drag And View through Fileman Launcher, Drag And View will exit automatically when you exit File Manager.

File Formats Supported by Drag And View and Drag And View Plus

File formats supported in this version of Drag And View version 2.0 are:

ASCII
Hex
Microsoft Word
Microsoft Word for Windows
Windows Write
Word Perfect
Word Perfect for Windows
Ami Pro
Q&A Write
Q&A Write for Windows
Microsoft Works
Microsoft Works for Windows
dBase
FoxPro
Clipper
Paradox
Paradox for Windows
Excel
Lotus 123
Symphony
Quattro, Quattro Pro
Quattro Pro for Windows
Windows Metafile
Windows Sound Files (WAV)
BMP
ICO
PCX
GIF
TIF
ZIP
LZH

Drag And View Plus also supports the following vector formats.

AutoCad (DXF)
Computer Graphics Metafile (CGM)
Micrografx Designer (DRW)
Word Perfect Graphics (WPG)
PIC files
HP Graphics Language

How To Drag And Drop

You can drag and drop files from Windows 3.1 file manager or any other file manager that mimics it. You can drag and drop one file or many files. Position the mouse cursor over a file or group of files that you want to drag. Click the mouse and hold the button down and start to move the mouse. The mouse cursor will change to a little white sheet of paper with a plus on it. The cursor will turn to a circle with a slash through when you drag the files from the file manager window. The cursor will remain looking like this until you drag the files over something that you can drop them on. When you've dragged the files over something that can accept them, the cursor will revert back to a little white piece of paper with a plus sign on it. Then and only then, let go of the mouse button and the files will be dropped. If you've dropped the files on the Drag And View Icon, a window will be created displaying the first file in the group of files that you dragged.

ASCII

ASCII is the name of a character set that computers store information in. When Drag And View views a file in ASCII format, it displays the files exactly as it appears on the disk and does not format it into a document, spreadsheet, database or graphic. Text files stored in ASCII usually contain only text and no special characters to represent formatting or fonts. Your WIN.INI, SYSTEM.INI, CONFIG.SYS and AUTOEXEC.BAT are in ASCII format.

Hex

Hex is short for hexadecimal and is a base 16 number system. Even though computers store information in binary (base 2) form, binary numbers which are made up of just ones and zeros are too long for displaying so base 16 is a very convenient way of looking at computer memory or files. A byte, the smallest unit of computer storage can be displayed by just one just 2 hexadecimal digits.

The Drag And View Hex viewer displays a file's contents as hexadecimal digits and ASCII characters, 16 of them on a line. The display consists of three columns. The first column consists of the offset into the file in hexadecimal. The second column has the next 16 bytes of the file displayed as 16 hexadecimal numbers. And, the third column has the same 16 bytes displayed as ASCII characters.

Word Wrap

Word wrap is a feature that many word processors and viewers use to display and print text so text does not go off the right side of the screen or page. Drag And View will word wrap a line of text when it gets too long to display in the current window. Instead of just breaking the text in the middle of a word, Drag And View will break the text between words so the text is still readable after it is wrapped.

Last

The "Last" and "Next" buttons allow you to scroll through the files in a Window. These buttons won't be active unless the Filelist menu has more than one file in it

Next

The "Last" and "Next" buttons allow you to scroll through the files in a Window. These buttons won't be active unless the Filelist menu has more than one file in it.

Play

The play button will only be active when you have dragged a Wav file to Drag And View. A Wav file is a Windows sound file and it has a "WAV" extension. When you drag a Wav file to Drag And View, DV will try to play the Wav file if you have a sound driver installed. If you want to hear the Wav file again, click on the Play button.

Fileman Launcher Index

Overview

[What is Fileman Launcher?](#)

[Removing Fileman Launcher](#)

[Using Fileman Launcher](#)

[Adding, Deleting and Changing Program Properties](#)

Commands

[Run Programs](#)

[Quit Programs](#)

[Auto View](#)

[View Files](#)

[Zip Files](#)

What Is Fileman Launcher

Fileman Launcher is a utility that allows you to automatically run all your File Manager accessories along with File Manager. Fileman Launcher is installed when you install Drag And View. When you run File Manager, Drag And View will also be run. As long as File Manager is the topmost program, Drag And View's icon will not be covered up by any other programs. When you exit File Manager, all the programs that you ran with it will be exited automatically. Fileman Launcher installs an "Fml" menu item in File Manager. From the "Fml" menu you can add and delete programs to the programs that Fileman Launcher runs, change how the programs are run, add command line arguments to the programs, quit all the programs, and rerun the programs. In addition to Drag And View, Fileman Launcher can run up to 9 additional programs with File Manager, and quit them when you quit File Manager.

Using Fileman Launcher

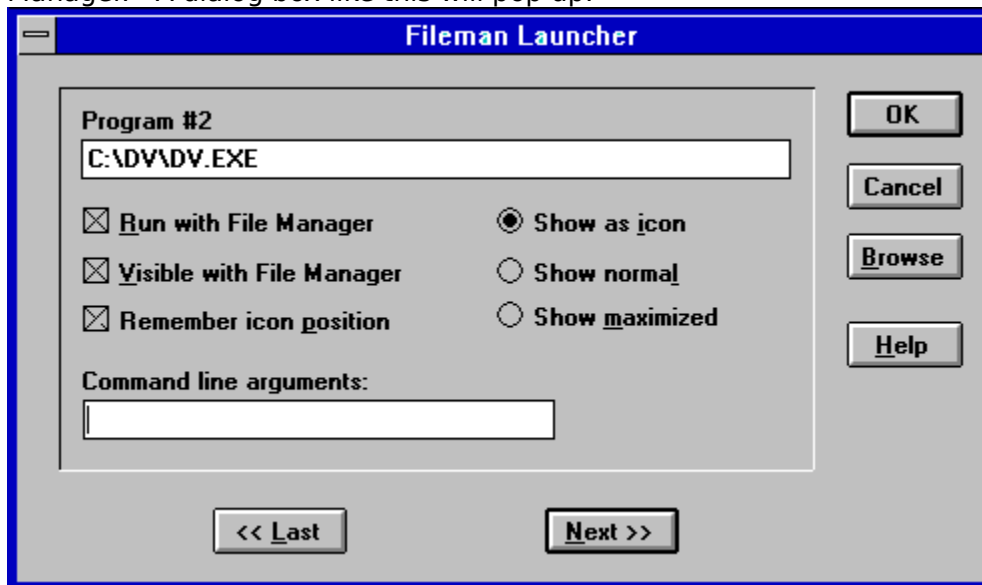
Once Fileman Launcher is installed you don't have to do anything. It will be run automatically every time you run File Manager. There will be a menu item called "Fml" on File Manager's menu bar. From the "Fml" menu you can add, delete and change the way Fileman Launcher runs programs.

Removing Fileman Launcher

To remove Fileman Launcher, run the DVSETUP program and choose "Remove Fileman Launcher".

Adding, Deleting and Changing Program Properties

You can easily add or delete programs from Fileman Launcher or modify how it runs the programs. Just choose the menu item "Modify Program List" from the FML menu in File Manager. A dialog box like this will pop up:



This dialog box shows the programs you have installed in Fileman Launcher and the ways you want to run them. At the bottom of the dialog box are buttons that say "<< Last" and "Next >>"; these buttons allow you to scroll through the program list. You can install up to 10 programs into Fileman Launcher. The upper left of the dialog box will tell you which number program you are viewing. If you want to add a new program, just click on the "Next >>" button till you get to a blank entry. Under the program heading enter the name of the program that you want to run with the full path. If you are not sure where the program is, you can click on the browse button on the right hand side to help you find it.

Under the program name there are three check boxes. They say "Run with File Manager", "Visible with File Manager" and "Remember Icon Position". "Run with File Manager" should be checked if you want the program to be run with File Manager. "Visible with File Manager" will allow you to always find this program when you want to use it with File Manager. When File Manager is on top of the other windows, so will be this program. When another application has the focus, then your program will allow itself to be covered. As soon as you click on File Manager and give it the focus, then your program will appear also. If want this option to be active, see that "Visible with File Manager" is checked. "Remember Icon Position" will remember the position of the application's icon when you close File Manager and will have the icon appear in the same place the next time you run File Manager. These last two options will only be available if you choose to have your application run as an icon. For that you need to have the "Show as icon" radio button on the right hand side checked.

On the right hand side are three radio buttons that allow you to specify how you want the program to be run. You can run the program as an icon. You can run the program "Normal"; that is like running the program from Program Manager. Or you can run the program "Maximized"; a maximized program will fill up the entire screen. Fileman Launcher will give the appropriate command when running the program. Some programs may not respond to the command and run only one way.

At the bottom of the dialog box, just above the "<< Last" and "Next >>" buttons, is an edit field called "Command line arguments". If you want to add any particular command line arguments to modify how the program will be run, you can put them in this field.

If you want to change any entry, just go to it and type your new specifications. Similarly, you can delete any entry by removing its name from the Program field.

Clicking on the OK button will save your changes automatically. Clicking on Cancel will discard your changes.

If you have made any changes to Fileman Launcher's program list, they won't become active immediately. You need to choose the menu item "Quit Programs" from the "Fml" menu. That will close all the running Fileman Launcher programs. Then choose "Run Programs" from the "Fml" menu. That will rerun the programs according to the changes that you've made.

Run Programs

Choose this menu option from the "Fml" menu to run the programs installed in Fileman Launcher. This menu item will only be available if the programs aren't running.

Quit Programs

Choose this menu option from the "Fml" menu to close all the Fileman Launcher programs that are currently running.

Auto View

The Auto View option makes Drag And View even more a part of Windows File Manager. When Auto View is activated, every time you highlight a new file in File Manager, Drag And View will display it. This feature will work only if one file is selected in File Manager at a time. You activate Auto View by clicking on "Fml" in File Manager's menu bar and then choosing "Auto view". When Auto View is active, there will be a check mark in front of it. You can turn off Auto View by selecting it again.

View Files

You can view files with Drag And View in two ways. One is by dragging them to the Drag And View icon. The other way is by selecting the "Fml" menu item from File Manager's menu bar and then clicking on "View files". When you drag files to the DV icon, Drag And View will always open up a new window. When you click on "View files" Drag And View will just add the files to an open DV window or open a windows if one is not already open.

Zip Files

Drag And Zip is another program from Canyon Software that enables you to easily run PKZIP and PKUNZIP from Windows. You just drag files from your file manager or use the Fml menu choice, "Zip files" and you can easily Zip them from Windows.

What is Shareware

Shareware is a method of marketing software where the user gets to try a fully functional version of the program before deciding to buy it or not. Many of you probably have done this with non Shareware software because you wanted to make sure that you liked the program before you actually spent money on it. With software that isn't Shareware, you are violating the software's copyright when you do that. With Shareware, you are expected to try out the software without first paying for it, but if you continue to use it after the trial period you are also violating the software's copyright. Paying for Shareware is often called registering it

Drag And View is available as Shareware from many bulletin boards and disk vendors. You are welcome to take a copy, install it on your computer and use it. The trial period is 30 days.

If you like Drag And View and you find that you continue to use it after the 30 day trial period, you are required to register it. That way you can continue to use it and not be breaking any laws. More importantly, by registering the program, you are acknowledging that you like the program and find it useful and you are helping Canyon Software to continue to produce programs that you will like. The registered version of Drag And View comes with a printed manual and 30 day money back guarantee. Registered users are also eligible for free technical support by phone, mail, fax or CompuServe.

Drag And View Plus is the same program as Drag And View except it contains additional file viewers for many vector graphic programs. In addition to all the viewers in Drag And View, Drag And View Plus also contains viewers for:

- AutoCad (DXF)
- Computer Graphics Metafile (CGM)
- Micrografx Designer (DRW)
- HP Graphics Language
- Word Perfect Graphics (WPG)
- PIC files

Because of limited distribution arrangement with the company that produces the viewers, we are not able to distribute Drag And View plus as Shareware.

REGISTRATION FORM

Drag And View Plus is the same program as Drag And View except it contains additional file viewers for many vector graphic programs. In addition to all the viewers in Drag And View, Drag And View Plus also contains viewers for:

AutoCad (DXF)
Computer Graphics Metafile (CGM)
Micrografx Designer (DRW)
HP Graphics Language
Word Perfect Graphics (WPG)
PIC files

Because of limited distribution arrangement with the company that produces the viewers, we are not able to distribute Drag And View plus as Shareware.

___ Drag And View version 2.0 with Fileman Launcher,
diskette, manual and shipping anywhere in the world @ \$25 ea \$ _____

___ Drag And View Plus version 2.0 with Fileman Launcher,
diskette, manual and shipping anywhere in the world @ \$35 ea \$ _____

___ Drag And View with Drag And Zip (special price)
@ \$40 ea \$ _____

___ Drag And View Plus with Drag And Zip (special price)
@ \$50 ea \$ _____

Subtotal \$ _____

California residents please add 7.25% sales tax: \$ _____

Total \$ _____

Diskette size 3 1/2" [] 5 1/4" []

All orders will be send by US mail unless requested otherwise.

Master Card & Visa Orders. You may call in your registrations to Canyon Software at (415) 415 382-7999 fax them (415) 382-7998 or send in this form with the information below.

[Click here for overseas registration points.](#)

Name As It Appears On Credit Card _____

MC/VISA # _____

MC [] VISA []

Expiration Date ___/___

Name: _____

Company: _____

Address: _____

Where did you obtain Drag And View _____

Any comments, suggestions or bugs?

Please make checks payable to:

Canyon Software
1537 Fourth Street Suite 131
San Rafael, CA 94901

My name is Dan Baumbach I am a member of ASP., The Association of Shareware Professionals. I can be reached either at the above address, on CompuServe electronic mail 71320,1277, or at (415) 382-7999, fax (415) 382-7998. Thank you for your registration.

The program author, Dan Baumbach, is an active member of the Association of Shareware Professionals (ASP). ASP wants to make sure that the Shareware principle works for you. If you are unable to resolve a Shareware-related problem with an ASP member by contacting the member directly, ASP may be able to help. The ASP Ombudsman can help you resolve a dispute or problem with an ASP member, but does not provide technical support for members' products. Please write to the ASP Ombudsman at 545 Grover Road, Muskegon, MI 49442, or send a CompuServe message via CompuServe Mail to ASP Ombudsman 70007,3536.

Overseas Purchases

Australia

France

Germany and Austria

Japan

United Kingdom

Australia

Manacom Pty Ltd
9 Cramford Street Milton
Queensland
Australia
Phone 617 368 2366
Fax 617 369 7589

France

Jean-Guy DUCREUX (aka Winnie)
WindowShare SARL
B.P. 2078
57051-METZ cedex 2
France
Phone 87 30 85 57
Fax 87 32 37 75

Germany and Austria

Pearl Agency
Am Kalischacht 4
79426 Buggingen
Germany
Phone 07631 360 200
Fax 07631 360 444

Pearl Agency Österreich
Stryer Str. 40
A-4540 Bad Hall
Austria
Phone 07258 53 33
Fax 07258 53 15

Japan

Personal Data Factory
Shimoueki-cho 451-3
Iseaki-shi
Gunma-ken 372

United Kingdom

REGISTRATION FORM - UK ONLY

Drag And View Plus is the same program as Drag And View except it contains additional file viewers for many vector graphic programs. In addition to all the viewers in Drag And View, Drag And View Plus also contains viewers for:

AutoCad (DXF)
Computer Graphics Metafile (CGM)
Micrografx Designer (DRW)
HP Graphics Language
Word Perfect Graphics (WPG)
PIC files

Because of limited distribution arrangement with the company that produces the viewers, we are not able to distribute Drag And View plus as Shareware.

Modem Users: Call our BBS for on-line support, or to register your copy. It's the Shareware Support BBS on 0442 891109 or 0442 890807. Call us now!

____ Drag And View Plus with Fileman Launcher, diskette and manual
@ #19.95 ea # _____

____ Drag And Zip @ #14.95 ea

____ Drag And View Plus with Drag And Zip (normally #14.95)
(special price) @ #29.95 ea # _____

VAT (Currently 17.5%) # _____

Total # _____

Diskette size 3 1/2" [] 5 1/4" []

MasterCard & Visa Orders. You may call in your registrations to Nildram Software on 0442 891331 or fax on (0442) 890303 or send in this form with the information below.

MC/VISA # _____

Expiry Date ___/___ Signature _____

Name: _____

Company: _____

Address: _____

Where did you obtain Drag And View/Zip _____

Any comments, suggestions or bugs?

Please make cheques payable to "Nildram Software", and send to us along with this completed form at:

Nildram Software
82 Akeman Street
Tring
Herts
HP23 6AF
United Kingdom

