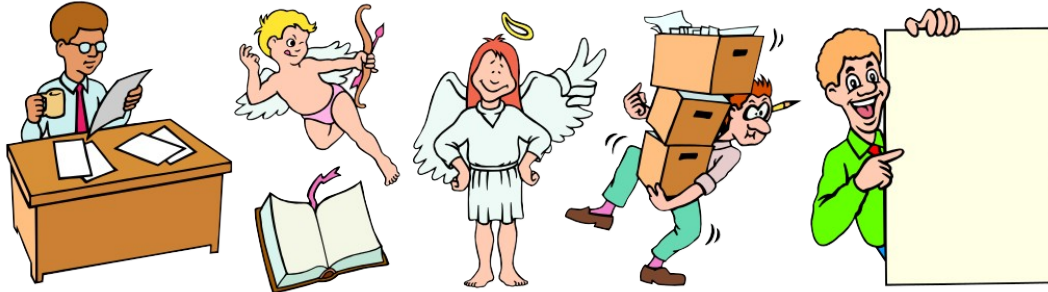


Arts & Letters EXPRESS Test Drive

If you have not installed the Test Drive version of Arts & Letters EXPRESS, you will be missing thousands of clip-art images and a very special opportunity.



To install the Arts & Letters EXPRESS Test Drive:

1. From the Program Manager, pull down the File Menu and choose the Run... command.
2. Type x:\install where x is the CD-ROM drive on your computer (D, E, etc.). Press the Enter key on the keyboard to run the installation.
3. Pull down the Installation menu and choose Install. The *Product Choices* dialog box will appear.
4. Click on **Arts & Letters Test Drive [Hard drive/8MB & CD]** to highlight the selection and then click on OK.
5. If you prefer Metric units of measurement instead of English units, click on **Arts & Letters English Setup** to deselect the option. The program will install the Metric Units option.
6. Follow the instructions that appear on the screen. The Arts & Letters EXPRESS icon will appear in the Arts & Letters Program Group.

To Run Arts & Letters EXPRESS:

Click on the Arts & Letters EXPRESS icon in the Arts & Letters program group to start the program.

METRIC VS. ENGLISH UNITS OF MEASURE:

If you installed Arts & Letters DRAW without changing any of the defaults, Arts & Letters DRAW will display dimensions in English units of measure. To change to Metric units, copy the file *.def from the **draw\program** directory on the CD-ROM to wherever you installed the DRAW program on your fixed disk.

FREE CLIP ART

Once you have installed Arts & Letters DRAW, click on the Special Offer button in the opening screen to display instructions for obtaining your free Clip-Art images.

TECHNICAL SUPPORT

If you have any questions, see the on-line Help or in North America, contact:

Computer Support Corporation
15926 Midway Road
Dallas, Texas 75244
Tel: 214-661-8960
Fax: 214-661-5429
Hours: 8:30 am to 6:30 pm, CST.

Outside of North America, contact one of the distributors listed below.

Australia

Alkira Australia Pty Ltd.
Locked Bag 9
Epping NSW 2121
Tel: (61) 2 876 8000
Fax: (61) 2 876 5134

Austria

Softline GmbH
Appenweierer Strasse 45
D-77704 Oberkirch
Germany
Tel: (49) 7802 9240
Fax: (49) 7802 924240

Belgium

Inimap n.v.
Attenrodestraat 6
B-3391 Meensel-Kiezezem
Tel: (32) 16 632031
Fax: (32) 16 631584

Denmark

ASK Corp.
Gråbrødretorv 1
1154 København K
Tel: (45) 33 33 98 88
Fax: (45) 33 33 98 20

England

Deverill Business Systems
1 Victoria Road, Parkstone
Poole, Dorset BH12 3BA
Tel: (44) 1202 722554
Fax: (44) 1202 735139

Finland

TT-Microtrading
Sinikalliontie 1
SF-02630 Espoo
Tel: (358) 0 502741
Fax: (358) 0 5027499

Germany

Softline GmbH
Appenweierer Strasse 45
D-77704 Oberkirch
Tel: (49) 7802 9240
Fax: (49) 7802 924240

Japan

Knox Data International
5-27-4 Minami-Ohi
Shinagawa-Ku, TOKYO 140
Tel: (81) 3 3766-0411
Fax: (81) 3 3766-0613
Fax: (81) 3 3763-1459

Korea

Applied Engineering, Ltd.
Suite 308, Kaelim-Bldg
17 DangsangDong
Yeongdeungpo, Seoul 950-041
Tel: (82) 2 679-7691
Fax: (82) 2 677-3863

New Zealand

Alkira Australia Pty Ltd.
Locked Bag 9
Epping NSW 2121
Tel: (61) 2 876 8000
Fax: (61) 2 876 5134

Netherlands

BIS
Rietdekkerstraat 14
2984 BM Ridderkerk
Tel: (31) 1804 30000
Fax: (31) 1804 12377

Norway

ASK Corp.
Gråbrødretorv 1
1154 København K
Denmark
Tel: (45) 33 33 98 88
Fax: (45) 33 33 98 20

Sweden

PC Grafik AB
Datavägen 12A
S-436 32 Askim
Tel: (46) 31-680220

Fax: (46) 31-684915

Switzerland

Softline GmbH

Appenweierer Strasse 45

D-77704 Oberkirch

Germany

Tel: (49) 7802 9240

Fax: (49) 7802 924240

d-drw 7/95