

Published: April 1997

Product Guide

Table of Contents

- **Introduction**
- **Easy to Use Interface Simplifies and Speeds Complete Installation Development**
- **Development Environment Features Support Your Specific Needs**
 - Express Wizard for Visual Basic 5.0*
 - InstallShield Objects*
- **Distribution Options Make It Easy to Build Anything, Anytime**
 - Media Builder*
 - Internationalization Support*
 - Internet-Enabled Installations with InstallFromTheWeb™*
- **Extend the Capabilities of Your InstallShield Express Installation System**
 - Express Extensions*
 - InstallShield5 Professional*

Introduction

Rapid application development tools, such as Microsoft Visual Basic and Borland Delphi, have changed the way many developers work, simplifying projects and allowing you to produce more applications, more quickly. As the visual development process becomes more streamlined, you have access to more automated tools and new Windows applications appear on the market daily. Many of the products of rapid application development are small, smooth applications, requiring equally smooth, uncomplicated installations. The speed with which RAD applications are produced also calls for a quick, reliable installation solution.

The various visual development environments currently in use each have specific requirements affecting the installation needs of the applications created. Different applications use different components, each demanding a particular installation procedure. As a busy developer, you have little time for custom programming around the specific needs and components of your development environments.

Distribution of your applications further complicates and slows the development process. Different media, such as Internet or CD-ROM, have specific requirements for distribution. The multiple versions of your applications, the various platforms you use, and languages your application supports also add to the complexities of your application's distribution.

How can you create installations for your applications as quickly as you develop them? How can you create installations customized for your application and development environment's specific needs without taking the time to create a custom project for each one? How can you distribute your application in multiple languages, to multiple platforms, on various media?

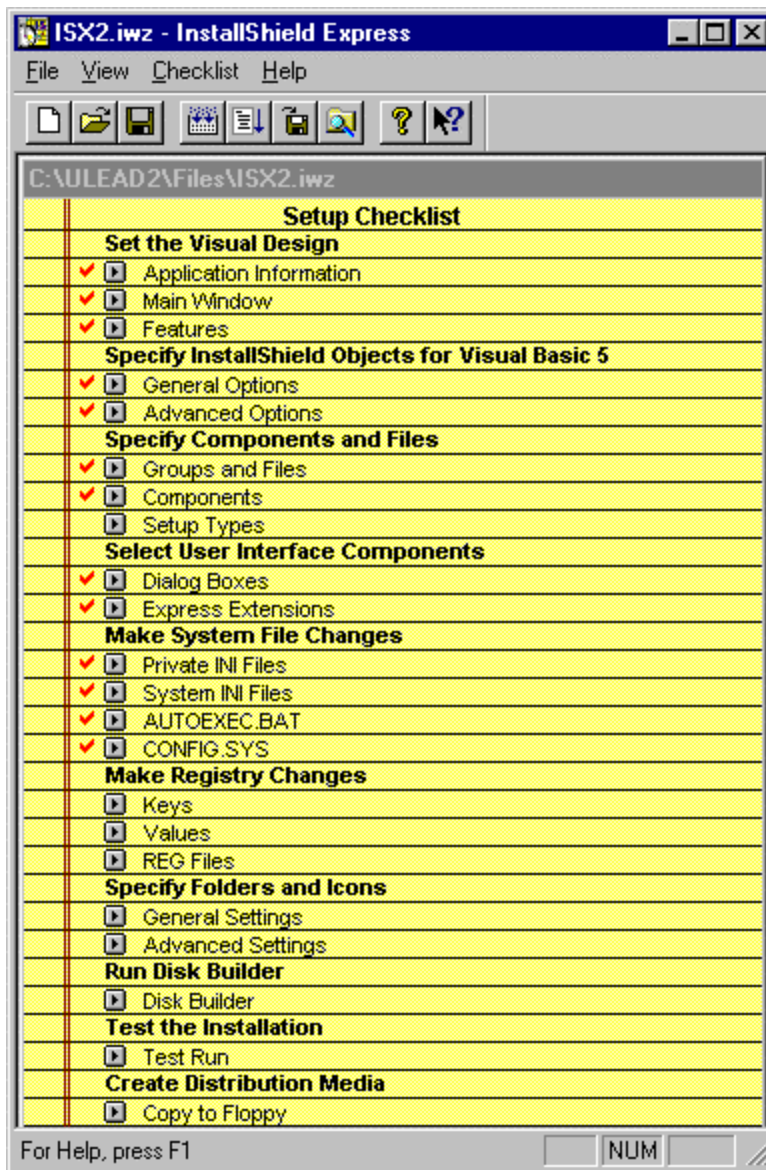
To effectively handle the installation needs of your particular visual development environment and to efficiently produce quality installation programs for your various applications, you need:

- Quick installation creation to keep up with rapid application development
- Automated component support to effortlessly install the components of your development environment
- An intuitive installation creation design that allows you to immediately delve into installation development with little-to-no learning curve
- Support for installation to all Windows platforms, 16- or 32-bit, to cover all of your applications
- A modifiable project structure, so that a setup project can be used repeatedly for different applications and versions
- Efficient distribution support, allowing you to easily create localized installations and distribute on various media
- The ability to expand and extend the capabilities your installation if necessary to handle more types of applications

In response to the setup needs of today's RAD developers, InstallShield Software Corporation introduces InstallShield Express 2. Based on world standard InstallShield installation technology, InstallShield Express 2 is a well-balanced installation development tool that combines speed and ease of use, without sacrificing quality and reliability. InstallShield Express 2 is ideal for your simpler applications, allowing you to create Windows 95/NT-compliant installation programs in minutes. And InstallShield Express 2 offers more automatic support for RAD development environments, such as Visual Basic, Delphi, and Power++, among others.

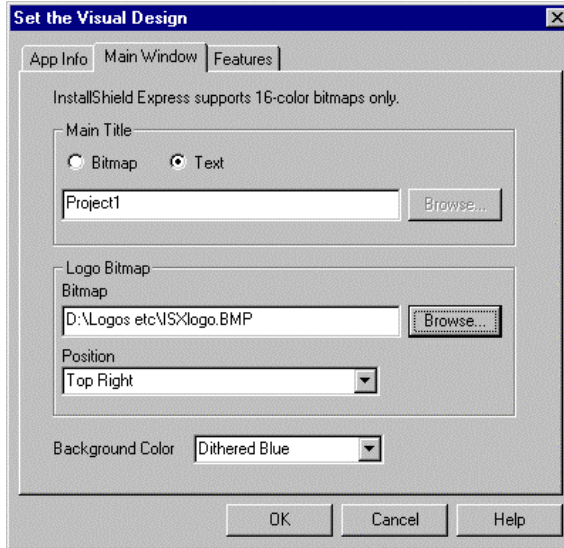
Easy to Use Interface Simplifies and Speeds Complete Installation Development

InstallShield Express 2 features the Yellow Pad Checklist, an intuitive interface that guides you step-by-step through the aspects of installation development. No scripting is involved. The checklist design uses smart checkmarks that let you know when you've completed the individual steps in the creation of your installation, ensuring that all the details are covered.



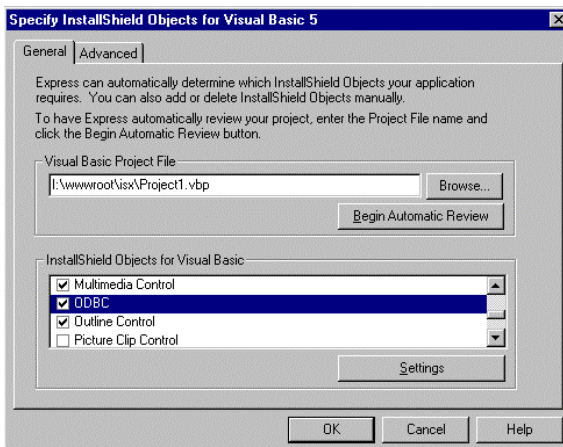
Smart checkmarks guide you through each aspect of installation development.

Step 1 – Set the Visual Design



The first step in your installation project lets you determine the basic look and feel of your installation. Here you'll specify the project names you will use and the general look of the end-user installation process. InstallShield Express installations use the InstallShield End-User Wizard, an industry-standard, Windows 95-style installation interface, so that your users will be instantly familiar with the setup process. You can also customize the installation interface – include your product's logo for added impact on your users.

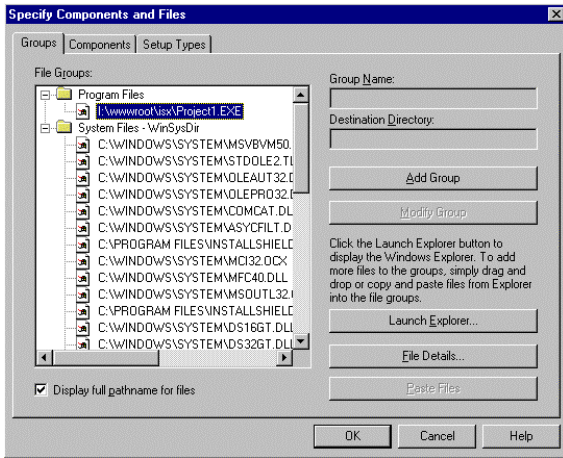
Step 2 – Specify InstallShield Objects



Select InstallShield Objects to include specific development environment component support in your application's installation. InstallShield Express displays the Objects available for the development environment used for your application – a variety of Objects are available for most every development environment component used by professional Windows developers. Simply point-and-click to include the Objects for the third-party components you need to install with your application. InstallShield Express 2 also determines if any extra files are required based on the application and includes them. InstallShield Object architecture greatly simplifies Windows installation development and eliminates any confusion about component installations.

InstallShield Objects are discussed in greater detail in the section below: *Development Environment Features Support Your Specific Needs*.

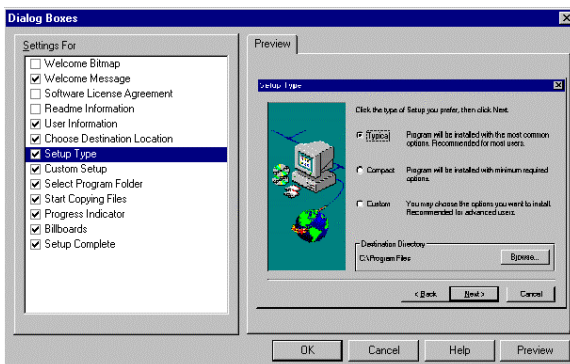
Step 3 – Specify Components and Files



InstallShield Express 2 is ready for your application files. Designed for simplicity, InstallShield Express uses completely visual file layout and organization. You can drag and drop entire folder structures from Windows Explorer. Your existing file organization will be maintained in filegroups. You can also visually reorganize your files here to create components and subcomponents in your application that your users can select for installation. InstallShield Express 2 also provides pre-structured setup types required for Windows 95/NT logo compliance – Typical, Custom, and Compact options are ready for you to simply drop the appropriate files into each type.

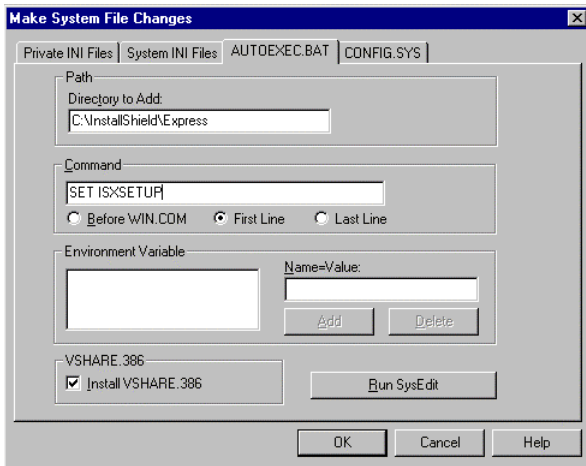
The visual organization of files makes it easy for you to locate what you need and modify your projects for future use. You can use your existing file/component structures in any InstallShield Express 2 setup projects. It's also easy for other developers to work on your projects. Either local drive-mapping or UNC path names can be used for your files, allowing you to build your setup using files on a network server. The files are clearly laid out for anyone to pick up your project and jump right into it.

Step 4 – Select User Interface Components



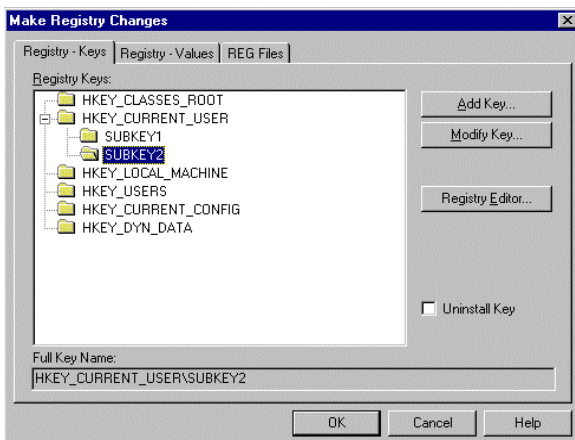
InstallShield Express 2 automatically places user interface components into your end-user installation process. Interface components are your communication with your users during installation. These interface components are the dialogs that prompt your users for information about themselves and the installation. InstallShield Express 2 displays over 13 of the most commonly used dialogs in Windows application installations. All you need to do is select the dialogs you wish to include, eliminating the need to create any graphics. Because they have the industry-standard look and feel, you can be sure that the dialogs will be familiar to your users.

Step 5 – Make System File Changes



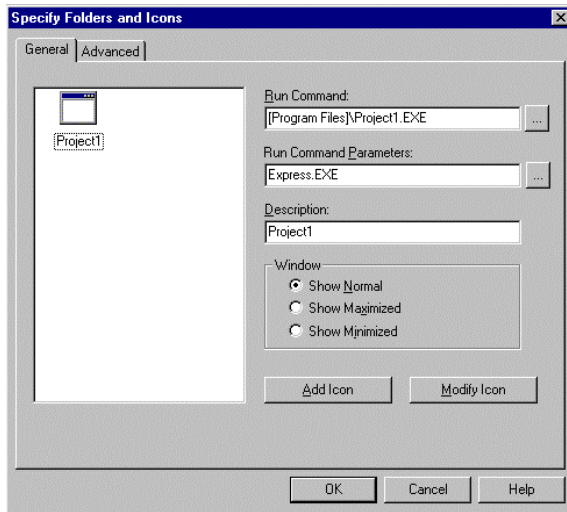
If your installation requires making changes to the system files on your users' systems, InstallShield Express 2 lets you easily do it for you. Each of the tabs in the Make System Files Changes dialog box is designed to make it easy for you to modify files such as your application's existing .INI files on the system (WIN.INI, SYSTEM.INI, etc.), the AUTOEXEC.BAT file, and the CONFIG.SYS file. InstallShield Express 2 takes the trickery out of modifying your users' systems for your application.

Step 6 – Make Registry Changes



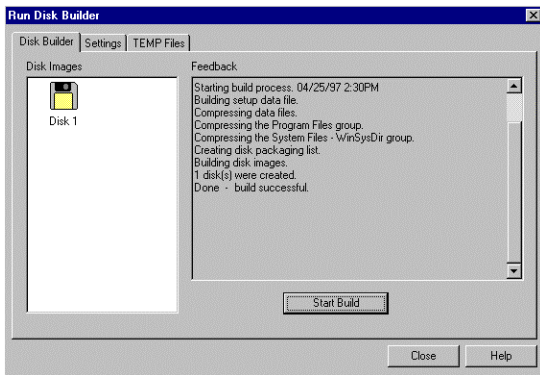
InstallShield Express 2 will automatically create the registry keys needed to install your application. You can also create any custom registry keys for your application and merge registry files by entering the settings in the Make Registry Changes dialog box. Just highlight the key under which you wish to add your custom registry key. Click the Add Key button and enter the key's name. To add a value, just move to the Registry – Values tab and enter the value. That's all that's involved. InstallShield Express 2 gives you the control to create or modify any registry entry that your application may require.

Step 7 – Specify Folders and Icons



Folder and icon creation is very easy with InstallShield Express 2. Specify the names of the folders and icons that will be installed with your application and InstallShield Express 2 will do the rest. InstallShield Express 2 will place the items in the proper places for Windows 95/NT compliance. You can also choose additional folders for icon placement. InstallShield Express 2 also lets you add shortcut keys and Windows 95/NT start menu items with a few mouse-clicks. You can also select the size of the initial window in which your application is displayed with the selection of a single radio button.

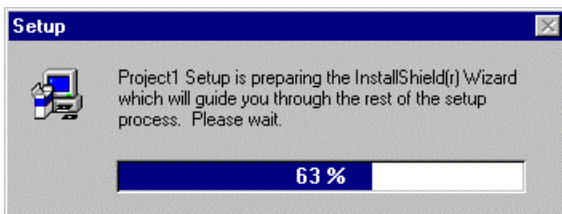
Step 8 – Run Disk Builder



InstallShield Express 2's disk builder lets you quickly plan your application and installation distribution. Select the distribution media you would like for your application – direct-from-Internet, CD-ROM, floppy, or self-extracting executable files. InstallShield Express automatically analyzes your files and lays out disk images according to the media you select. You can also include extra files on the “disk 1” image, such as header files, ReadMe files, or temporary files required only for the installation.

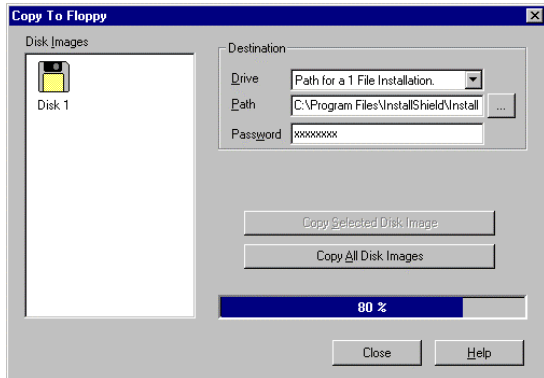
InstallShield Express 2 distribution options are discussed in greater detail in the section below: *Distribution Options Make It Easy to Build Anything, Anytime.*

Step 9 – Test the Installation



InstallShield Express 2 conveniently lets you test your installation project without leaving the design area. One click returns you to the Yellow Pad Checklist for further modifications to your installation if your testing results require them. This lets you test more often, ensuring the best installation for your application.

Step 10 – Create Distribution Media



After your installation has been tested to your satisfaction, you are ready to create your distribution. InstallShield Express 2 automatically copies your distribution image directly to your specified media (including a single-file, self-extracting executable) or to a hard drive folder for later distribution. This application/installation package is saved for re-use should you choose to make duplicates. You can also choose to password-protect your installation at this time.

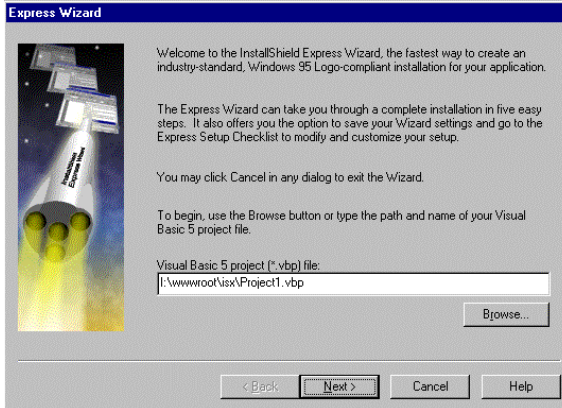
Development Environment Features Support Your Specific Needs

InstallShield Express 2 offers more support for Windows development environments than any other installation development tool. Users of RAD environments will find that the installation issues they consider to be particular needs of their applications are actually commonplace, effortless events with InstallShield Express 2.

Express Wizard for Visual Basic 5.0

The Express Wizard for Visual Basic 5.0 is absolutely the fastest route to a Windows 95/NT-compliant setup for Visual Basic 5.0 applications. InstallShield Express 2 eradicates the longtime industry belief in a lack of quality setup tools that address the needs of Visual Basic developers. The Express Wizard lets you create a complete, solid installation for your Visual Basic 5.0 application in 5 simple steps that require 5 short minutes, making InstallShield Express 2 the ideal setup tool for Visual Basic 5.0 users.

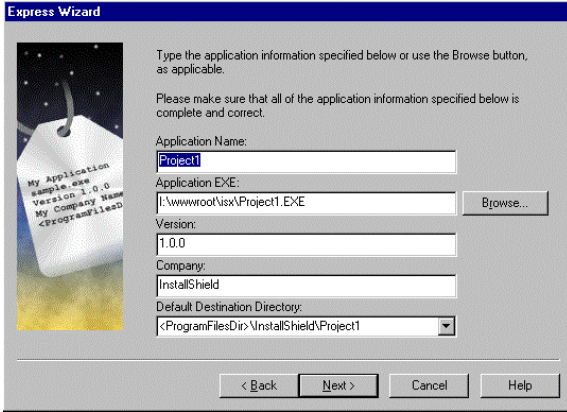
Step 1



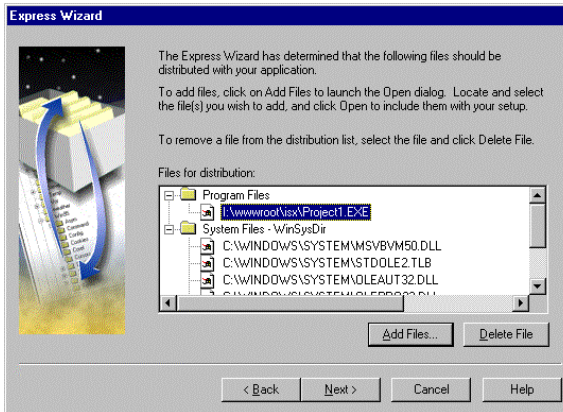
Specify the Visual Basic 5.0 project file for your application.

Step 2

Provide the application name, application .EXE name, version number, company name, and the default destination directory in which your application will be installed.

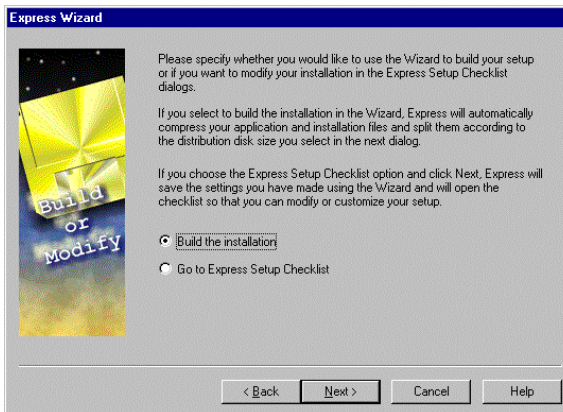


Step 3



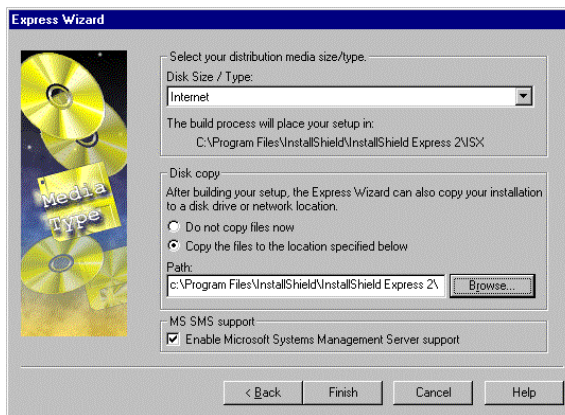
The Express Wizard parses your application code, returns the files that need to be distributed with your application, and displays them here. From this list, you may choose to add or delete files.

Step 4



Though not required for a Windows 95/NT compliant setup for your Visual Basic application, you may wish to further modify or customize your installation project beyond the Express Wizard options. This step allows you to click-out to the Yellow Pad Checklist, where you can specify a variety of installation options and complete the installation using the 10 checklist steps described earlier.

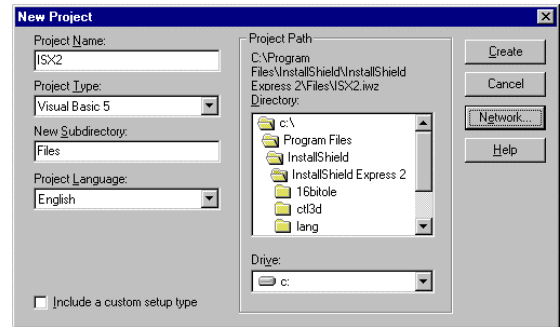
Step 5



Choose the distribution media for your application. The Express Wizard allows you to create CD-ROM, Internet, or floppy disk installations. The Express Wizard will then copy your application/installation package to the location you specify and your project is finished.

InstallShield Objects

InstallShield Objects encapsulate all the knowledge needed to deploy components used in your application. Before InstallShield Objects you had to write scripts to install components. InstallShield Express lets you simply select the components that need to be installed with your application – a variety of third-party components are handled with InstallShield Express 2. The list below shows the development environments supported and the InstallShield Objects for the components commonly used with those environments. Each copy of InstallShield Express 2 contains all of the Objects listed below:



Specify your development environment at the beginning of your project and InstallShield Express will tailor the checklist for your needs.

Development Environment Support

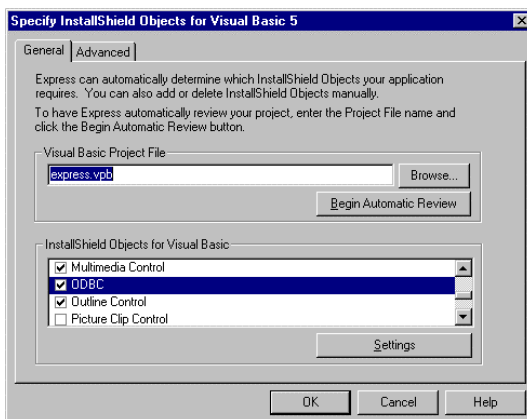
Visual Basic 5.0 / 4.0
Delphi 3.0 / 2.0
Power++ 2.0
Optima ++ 1.5
Paradox 7.0
Visual C++ 5.0 / 4.0
Visual C++ runtime files
Borland C++ 5.0 / 5.02
Borland C++ Builder 1.0

You can also use InstallShield Express 2 to create installations for applications created with any and all Windows 95 development environments.

Built-in InstallShield Objects

ODBC 3.0 / 2.5 (32-bit)
ODBC 2.1 (16-bit)
Visual Basic runtime files
Visual Basic project file review
Data Access Objects (DAO)/Jet
Borland Database Engine (BDE) – full or partial
Self-registering .OCXs, .DLLs
MFC 4.0
OLE
Power++ runtime files
Optima++ runtime files
Paradox runtime files
Client/server Paradox runtime files
ReportSmith runtime files
SQL Links
Local Interbase

Borland RTL, ClassLib, OWL, VDBT



*InstallShield Objects for Visual Basic 5.0
give VB developers automatic support for
installing their components.*

Distribution Options Make It Easy to Build Anything, Anytime

InstallShield Express 2 uses completely visual means to build your application's distribution on the media you select, in the format you select, and in the languages you select. The ability to select distribution options at build-time makes it easy for you to build a project and modify it again and again for different version and language builds.

Media Builder

InstallShield Express 2's Media Builder lets you choose your build options on the fly. In addition to the distribution options below, you can also automatically install fonts and include the unInstallShield uninstaller. With a few mouse-clicks, you determine your distribution format and media:

Single Self-Extracting Executable File (.EXE)

This distribution option compresses your application and its installation files into a single .EXE that, when double-clicked, decompresses and launches the your application's installation. Place this file on the Web, on an FTP site, or anywhere else to be downloaded and decompressed. This file can be password-protected, if needed.

CD-ROM

With InstallShield Express 2 you can also leave your files uncompressed and write them to CD-ROM. CD-ROM installations created with InstallShield Express 2 can be auto-launched when the CD is inserted into a CD-ROM drive.

Floppy Distribution

InstallShield Express also allows you to split your files across disks, with the ability to include header files, ReadMe files, and temp files on the first disk.

Internet Distribution

In addition to the ability to create a downloadable self-extracting .EXE, InstallShield Express 2 is also optimized for use with InstallFromTheWeb, which allows you to Web-enable your applications for direct installation from the Web. For details on direct-from-the-Web installations requiring no downloading or decompressing, please refer to the section below: *Internet-Enabled Installations*

SMS Support

InstallShield Express 2 also lets you easily include SMS support with one mouse-click. SMS support includes .PDF file creation and silent mode support.

Internationalization Support

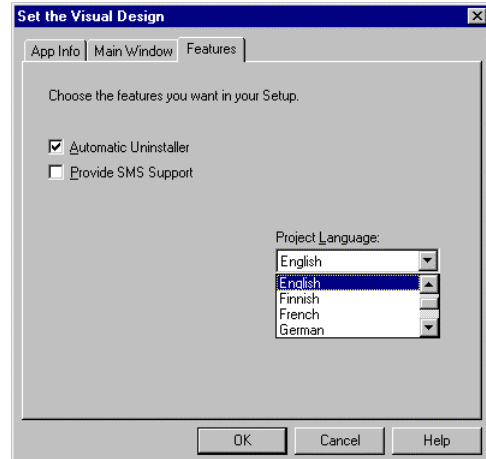
Localizing your InstallShield Express 2 installation for international distribution is easy. Choose the languages before building and at build-time, InstallShield Express 2 pulls in the translated resources. InstallShield Express 2 includes the complete resources for localized installations in the following languages:

- English
- Dutch
- French
- Finnish
- German
- Italian
- Spanish
- Swedish

One installation project can be used repeatedly to produce installations in many languages for applications of any language.



Translated resources are automatically included in your installation.

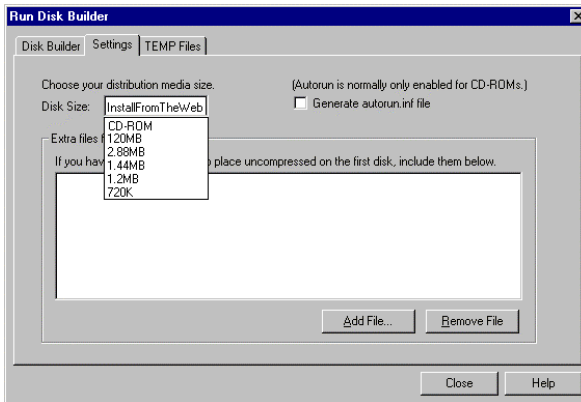


Choose the target languages target at the beginning of your project and InstallShield Express 2 will set the structure for your project.

Internet-Enabled Installations with InstallFromTheWeb

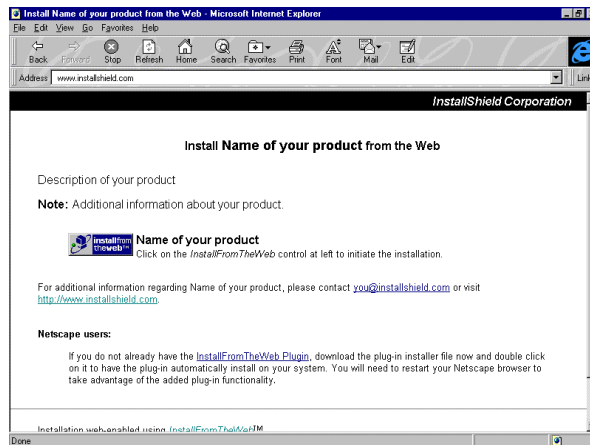
InstallShield Express 2 installations are optimized for use with InstallFromTheWeb. InstallFromTheWeb lets you Web-enable your InstallShield Express installations through a few simple Wizard steps – allowing your users to simply click one button on your Web site to automatically launch your application’s installation directly from the Web. Because InstallFromTheWeb has eliminated the need to download and decompress your application files first, your users will spend less time online waiting for a download with slow modem connections. And InstallFromTheWeb provides error recovery in the event of a broken connection. InstallFromTheWeb resumes the file copying process where it left off due to the lost connection – it will not re-copy the files it has already installed to your users’ hard drives.

Installations made with InstallShield Express 2 are optimally laid out and compressed to ideal size for use with InstallFromTheWeb. Simply select the InstallFromTheWeb distribution option to Web-enable your existing installations and save your users from download hassles.



At build time, choose InstallFromTheWeb as your distribution media and InstallShield Express 2 will optimize your installation for Web-enabling.

One button click automatically runs your installation directly from the Web for your end-users.



For more information about InstallShield5 Professional, please contact ComponentSource – try our e-mail address: sales@componentsource.com

Extend the Capabilities of Your InstallShield Express Installation System

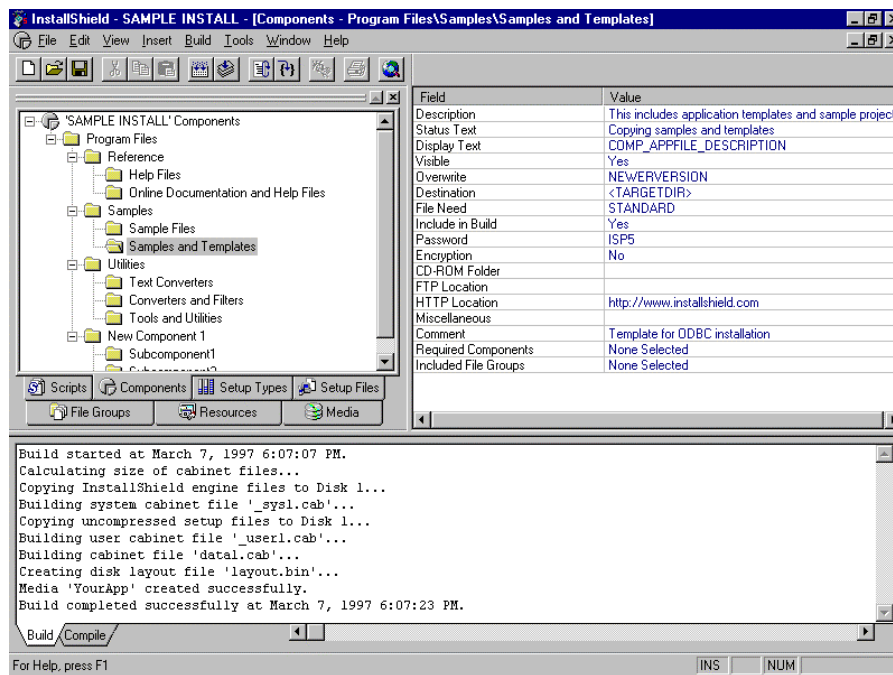
While InstallShield Express 2 provides complete, solid reliability in the quality installations you can produce with it, there may be times in which your application requires a more advanced, custom installation. InstallShield Express 2 has extendible options, which can provide you with additional power.

Express Extensions

Express Extensions expand on the features of InstallShield Express 2, giving you the extensibility to call .DLLs, display text files, and launch components and subsets. InstallShield Express 2 becomes as powerful as you want it to be with the ability to call .DLLs or launch background .EXE files to run at a specified point in the installation process. If you need a particular task performed during the installation that is not built into InstallShield Express, use Express Extensions to call the task. Designed for the more advanced developer, Express Extensions give you the control to go beyond the settings in the Yellow Pad Checklist.

InstallShield5 Professional

If your application calls for ultimate flexibility and customization in its installation program, InstallShield5 Professional has the tools to do the job. A complete software installation development system, InstallShield5 Professional allows you to create any type of installations for your Windows applications. A Visual C++-like installation development environment combined with powerful functions and tools give you the added functionality to create more advanced, custom installations.



InstallShield5 Professional is the most powerful, full-featured installation development system available.

For more information about InstallShield5 Professional, please contact ComponentSource – try our e-mail address: sales@componentsource.com

Platform Support

- Windows 95 or Windows NT 4.0 hosted development environment
- Windows 3.1 or Windows 95/NT installations

System Requirements

- Development environment requires Windows 95 or Windows NT 4.0 or higher
- 20MB disk space
- 16MB RAM
- SVGA monitor or better

Documentation

- User's Guide
- Context-sensitive Help

Licensing

InstallShield Express 2 includes royalty-free unlimited distribution of any number of applications.

InstallShield Software Corporation • 900 National Parkway Suite 125 • Schaumburg, IL 60173-5108 • USA • www.installshield.com

© 1997 InstallShield Software Corporation. All rights reserved. This document is for information purposes only. InstallShield Software Corporation makes no warranties, express or implied. Companies mentioned do not imply an endorsement. InstallShield is a registered trademark of InstallShield Corporation. InstallFromTheWeb is a trademark of InstallShield Software Corporation. All other trademarks are the property of their respective owners.
Part No. 131-03003 0497