

## Introducing KODAK PRECISION Color Configure

KODAK PRECISION Color Configure brings the benefit of full color control to your PC desktop. Whether you're a novice or experienced color operator, the KODAK PRECISION Color Configure is simple to use and follows standard Microsoft Windows conventions.

KODAK PRECISION Color Configure (Color Configure) is a desktop utility that works with Aldus PhotoStyler to create a fully calibrated and characterized environment. The benefits of a color-managed environment include:

- Stable, repeatable color
- Simulation of output as it will appear when printed or proofed
- Conservation of expensive time and materials

This chapter gives an overview of KODAK PRECISION Color Configure features and functions and lists the equipment you need to operate it. For more information on optional Kodak color management products, call (800)-752-6567 (U.S.A.) or 508-670-6877. Fax 508-670-6550.

## Color management overview

Color management requires three components:

- Precision Transforms (also referred to as color profiles)
- A color processor
- A color management application, such as Aldus PhotoStyler

Precision Transforms (PTs) define the color reproduction characteristics of the devices, media, and file formats you use. Each PT defines a very specific component of your system: for example, a particular brand and model of monitor. A database of PTs, including input, monitor, color printer, proofing, effect, import, and export type PTs, is provided with Aldus PhotoStyler. When installing Aldus PhotoStyler, you specify the PTs to be used in your system.

Color Configure creates configurations of PTs that identify each device in your system and makes this information available to the color processor.

The color processor combines or composes configured PTs to generate a new set of PTs. The composed PTs define how color information passes from one device to another.

Aldus PhotoStyler then uses the composed PTs and color processor to color-correct images as they are opened, imported, exported, previewed, edited, or output by the application.

With this color definition, your system's performance is enhanced and images are reproduced with predictable and repeatable color quality.

## Color Configure functions

Use Color Configure to :

- Select Precision Transforms (PTs) for your system devices and settings
- Save and/or modify PT selections in a configuration
- Create new, composed Precision Transforms from a configuration of PTs specifically for your devices
- Delete unwanted Precision Transforms and configurations from your system database

These Precision Transforms are obtained from one or more of the following sources:

- With Aldus PhotoStyler
- Packaged with KODAK PRECISION Color Configure
- Optional KODAK PRECISION Device Color Profiles (DCPs)
- Optional KODAK PRECISION color calibration and characterization software, such as KODAK PRECISION Input Color Calibration Software
- Compatible, non-Kodak color management applications that generate color profiles

If you use a device that isn't listed in the PT database, you can order device color profiles through Kodak.

For more information, call (800)-752-6567 (U.S.A.) or 508-670-6877. Fax 508-670-6550.

## Color Configure features

Color Configure features allow:

- Automatic application of standard highlight and contrast effects as files are opened
- Simulation of images on monitor as output by Aldus PhotoStyler on printers and proofers
- Access to Precision Transforms from a variety of applications
- Image conversion from one color space to another upon import and export

All of these features operate in the Microsoft Windows environment.

To go to any of the following topics, click on its title:

[Color Management Overview](#)

[Color Configure Functions](#)

[Color Configure Features](#)

# KODAK PRECISION COLOR CONFIGURE



RETURN TO  
PHOTOSTYLER

## CONTENTS

- 1 Introducing KODAK PRECISION Color Configure
- 2 Quick-start Procedure
- 3 Using KODAK PRECISION Color Configure
- 4 Starting KODAK PRECISION Color Configure
- 5 Configuring your system with Precision Transforms
- 6 The File Menu
- 7 Deleting Precision Transforms and Configurations
- 8 Using the Menu Bar to view PT Attributes



ABOUT  
KODAK  
PRECISION



MAIN  
MENU

NEXT

# KODAK PRECISION COLOR CONFIGURE



PHOTOSTYLER

## CONTENTS

- 9 Ending Your Color Configure Session
- 10 Glossary



ABOUT  
KODAK  
PRECISION



MAIN  
MENU

## Quick-start Procedure

This quick-start procedure is an overview of the steps required to create configuration with KODAK PRECISION Color Configure software. The steps below are described in detail in "Using KODAK PRECISION Color Configure" later in this manual.

With KODAK PRECISION Color Configure fully installed on your hard disk, follow these steps to create a configuration.

1. Open the KODAK PRECISION Color Configure application in the control panel.
2. Select New Configuration from the File menu. The Color Configure dialog box appears.
3. Click Monitor to select a Monitor Precision Transform.

**Note:** A Monitor Precision Transform must be specified to create a Configuration. The selected Monitor Precision Transform will be used with all configurations you create.

4. Click on any additional options on the dialog box to configure other types of Precision Transforms, including Effects, Monitor Proof Agreement (MPA), and Output Precision Transforms.
5. When you are done configuring Precision Transforms, from the File menu, select Save Configuration As...
6. Type a name for the configuration and click OK. The PRECISION Transform Composition Box appears and a progress bar indicates the percentage of completion.

When the procedure is complete, the new configuration name displays in the Color Configure dialog box. You can now use it with Aldus PhotoStyler.



## Using KODAK PRECISION Color Configure

**Note:** When you first install Aldus PhotoStyler, you have the option to specify the components of your computer system, such as the monitor that you use, the scanner, the printer, and so on.

If you replace or change one or more of the components used in your system, use the following procedures to set up a new configuration of PTs.

To color correct images, Aldus PhotoStyler needs to know certain information about your computer system. Color Configure allows you to gather that information by selecting the Precision Transforms that represent system components and then saving the PTs as a configuration.

Each configuration must have a Monitor PT. You can further specify your system by selecting Input, Input Effect, Output, Output Effect, and Monitor Proof Agreement (MPA) Precision Transforms.

Your database of Precision Transforms varies with the types of Kodak Device Color Profiles you use and with third-party device color profiles that you import for use with Color Configure.

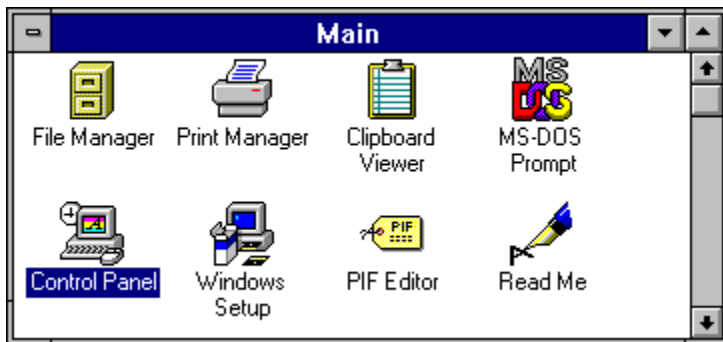
For more information on importing third-party device color profiles, see : "Import Filters"

Color Configure consists of a Control Panel icon, online Help, and a Main window from which appear a series of dialog boxes, pull-down menus, and options.

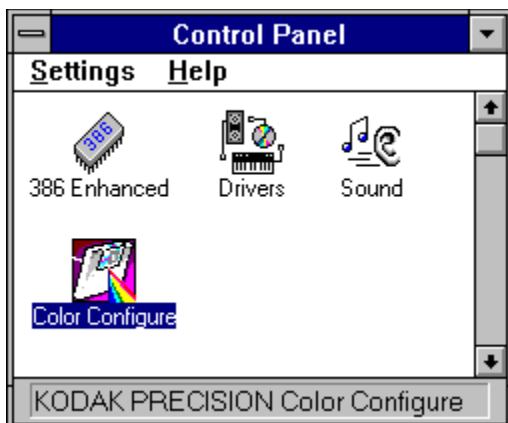
## Starting KODAK PRECISION Color Configure

### To start Color Configure

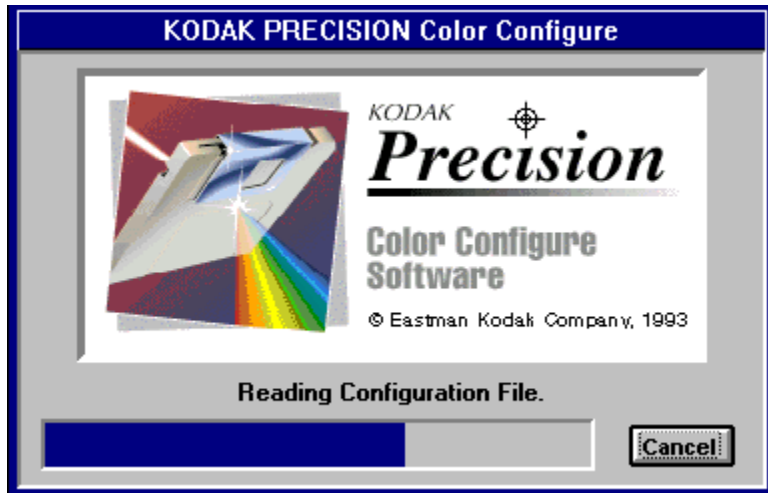
1. From the Main Group of the Program Manager dialog box, double-click on the Control Panel icon.



The Control Panel dialog box appears, displaying the KODAK PRECISION Color Configure control panel icon.



2. Double-click on the Color Configure icon. The Color Configure Startup dialog box appears.



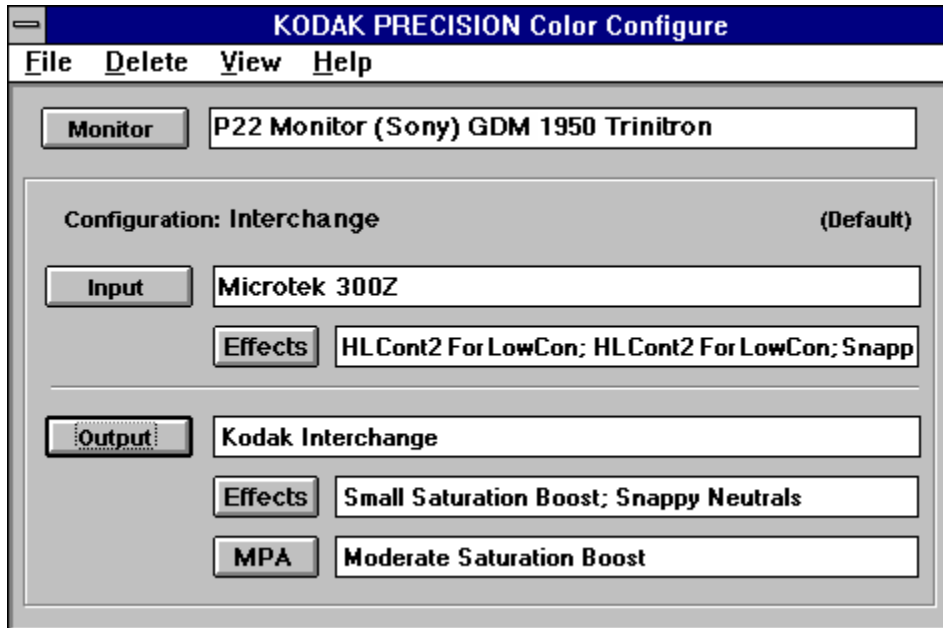
Initially, the system searches for and categorizes all Precision Transforms stored on the system and saves this information in a private database file. Once the database is created, subsequent Color Configure startups are faster.

If you change your database, the system repeats the initial search and categorization step.

A progress bar on the Startup dialog box monitors the process of creating the database and gives the percent of completion. When the process is complete, the KODAK PRECISION Color Configure dialog box is brought to the foreground of the desktop.

## The Color Configure dialog box and menu bar

The KODAK PRECISION Color Configure dialog box and menu bar display all of the options for configuring your system with Precision Transforms.



Color Configure contains several elements common to Windows-based applications, such as pull-down menus, option buttons, progress gauges, and list boxes. Refer to the Microsoft Windows user's guide for Windows basics.

When first started, the Color Configure dialog box appears with the default configuration. From here, you can access additional dialog boxes for selecting Precision Transforms or for viewing PT information.

The menu bar appears at the top of the Color Configure dialog box, with the File, Delete, View, and Help pulldown menus. These menus allow you to perform a variety of file management and printing tasks and are described below.

## Getting Help

You can get more information about Color Configure features and functions through the online Help feature. Obtain information about a topic by pulling down the Help menu to Search, and then choose a topic.

<b>Help</b>
<b>U</b> sing Help
<b>C</b> ontents
<b>S</b> earch
<b>A</b> bout...

Using Help gives information on how to use Help, such as how to choose a topic, search for a topic, place a bookmark holder on a topic, or print information. The Color Configure Help feature follows Windows conventions. Refer to your Microsoft Windows user's guide for more information .

You can also press **F1** to access Help at any time during your session to get information on the current dialog box or menu.

To go to any of the following topics, click on its title:

[Dialog Box & Menu](#)

[Getting Help](#)

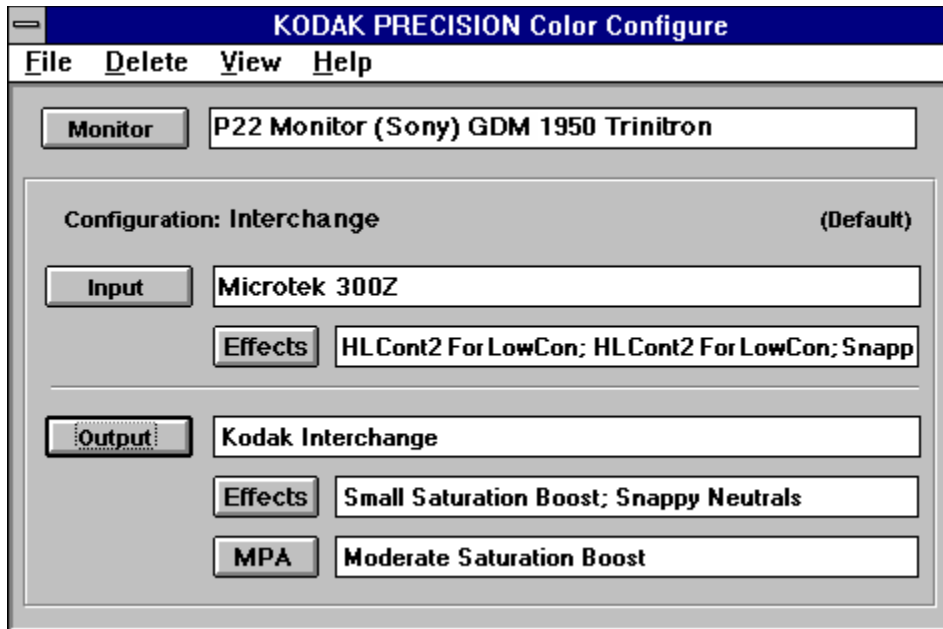
## Configuring your system with Precision Transforms

Use the Color Configure dialog box to select the Precision Transforms that match your devices and settings. When you first start up Color Configure, the Color Configure dialog box appears with the current configuration selected.

When creating a new configuration, or when no PTs are saved in a configuration, each option field shows (No Selection). If you previously selected PTs for the Default configuration, their names are displayed in the Color Configure dialog box.

The Monitor option appears at the top of the Color Configure dialog box with the name of the configured Monitor PT, when selected. The configuration name appears below the Monitor option. When the configuration is unnamed, the configuration name appears as Configuration: (Untitled).

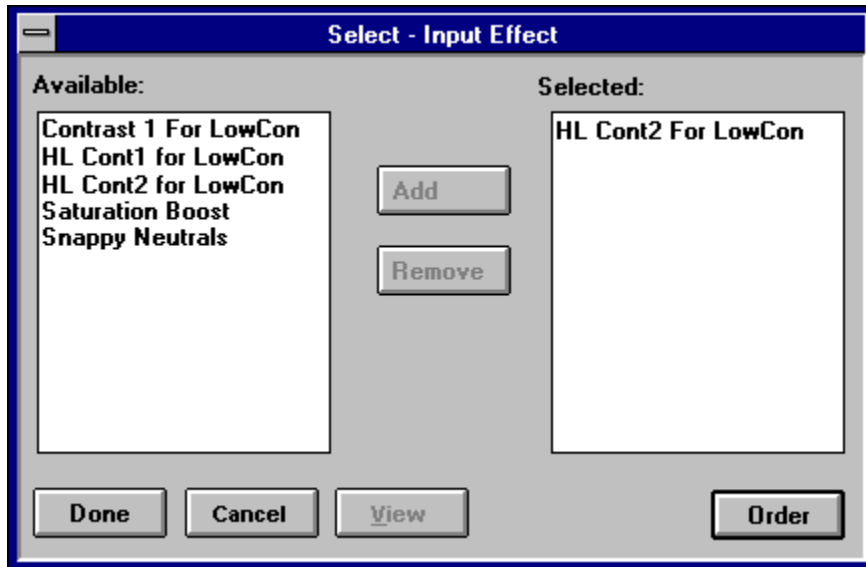
If the configuration is the default configuration, (Default) appears to the right of the configuration name.



For more information on creating the default configuration and naming configurations, see "The File Menu" later in this manual.

## Multiple dialog boxes

Color Configure presents a series of dialog boxes that correspond to the types of Precision Transforms available. For example, when you click on the Monitor button, a Monitor PT dialog box appears and displays all available Monitor-type PTs stored in your PT database.



Some types of Precision Transforms such as Input and Output, present an additional level of dialog boxes for selecting Effects-and MPA-type PTs.

When you access other PT types, such as proofing system Output PTs, a multiple dialog box appears to select the appropriate PT for the settings you use.



## Selecting Precision Transforms

You use PT Selection dialog boxes to select the Precision Transforms for a configuration. The procedure for choosing PTs is similar for most dialog boxes, with the following exceptions:

- The selected Monitor Precision Transform is applied to every saved configuration. When you change the Monitor PT, Color Configure updates each configuration to include the newly selected Monitor PT.
- Effects PT Selection dialog boxes allow you to add, remove, and rearrange PTs.
- Folders within a PT Selection dialog box indicate availability of an additional PT Selection dialog box. The PTs in this box are specifically for a type of manufacturer and/or model of a device.

When you display a saved configuration, the selected PTs for each type appear in the Color Configure dialog box. When you click on a button to access a PT Selection dialog box, such as the Input button to select an input-type PT, the currently selected PT displays The selected PT, may appear in reverse video, depending on the way you set up your Windows default settings.

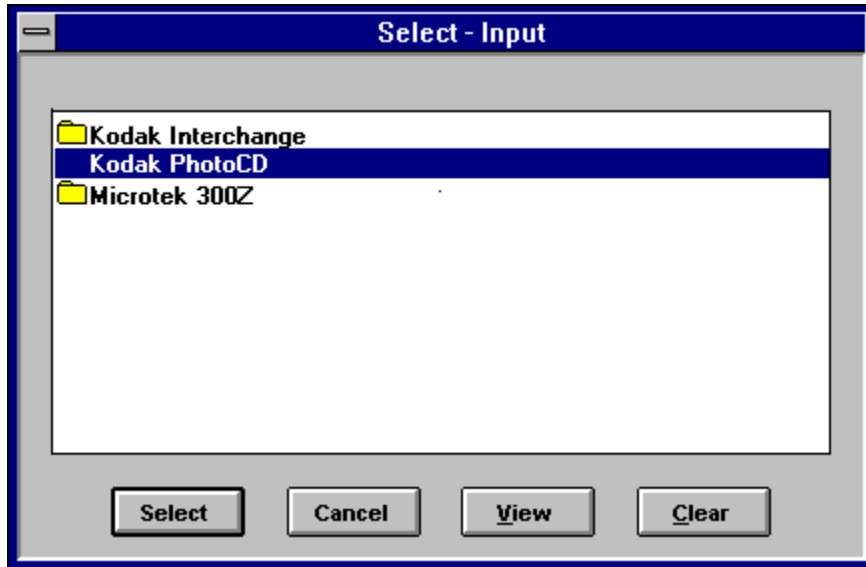
As you use Color Configure, you can choose options from the pull-down menus on the Menu bar. For example, you can save and delete a configuration or obtain Help. Menu bar functions are discussed in detail later in this chapter.

PT Selection dialog boxes display a folder symbol to the left of the folder name. A folder symbol indicates another PT Selection dialog box is available with an additional group of PTs.

You can use the same PT in as many configurations as you need. When deleting PTs, you cannot remove PTs that are saved in a configuration. PTs you cannot delete appear grayed out in the PT Selection dialog box.

## PT selection options

PT Selection dialog boxes contain some combination of the following options: Select, Done, Cancel, View, and Clear.



**Select.** Adds a selected PT to the current configuration.

**Done.** Adds selected Effects PTs to the current configuration.

**Cancel.** Displays the Color Configure dialog box without making a change to the current configuration.

**View.** Displays the attributes for the selected PT. [See "Viewing PT Attributes" later in this chapter for more information.](#)

**Note:** View is unavailable for folders. Open the folder to display the PT Selection box and view attributes.

**Clear.** Removes the selected PT from the Color Configure dialog box. This option is not available for Monitor-type PTs because every configuration requires a Monitor PT.

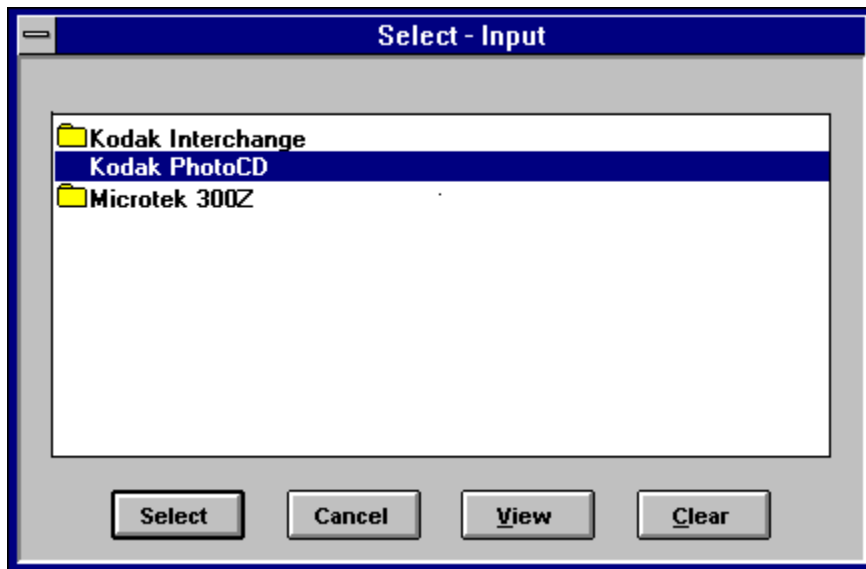
## To add a PT to the current configuration

Add a PT to the current configuration in one of two ways:

- Click on the PT name displayed in the corresponding PT Selection dialog box. Then, click Select at the bottom of the PT dialog box add the PT to the configuration.
- Double click on a PT to automatically add the PT to the current configuration.

### To select a PT:

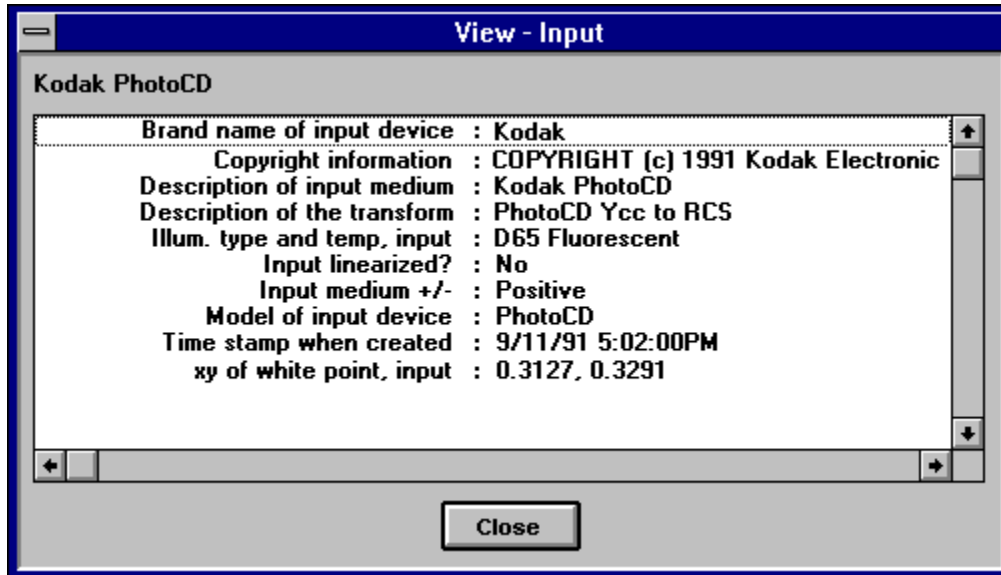
1. From the Color Configure dialog box, click on a button to display the list of available folders and PTs. For example, to select an Input-type PT, click the Input button. When an additional dialog box is available for folders, double-click on the folder icon to display the PTs stored within the folder.



2. Click on the desired PT. The name of the PT displays in the Color Configure dialog box for verification.

## Viewing PT attributes

Use the View option, available in PT Selection dialog boxes, to display a list of attributes for a selected PT. You must select a PT before you can view its attributes.



How much attribute information you use depends on what you need to know about a PT. You can set up Color Configure to display some or all of the attributes available for a selected PT. For more information, see "Preferences", later in this chapter.

## Types of Precision Transforms

The type of PTs you select such as Input, Monitor, and Output depends on the types of devices you use and how you operate. Aldus PhotoStyler uses the PTs you configure with Color Configure when you use it to open and save images. For more information about how PTs are used, see "The color management system " in the Aldus PhotoStyler User Manual.

The following table gives an overview of each type of PT you can configure with color Configure.

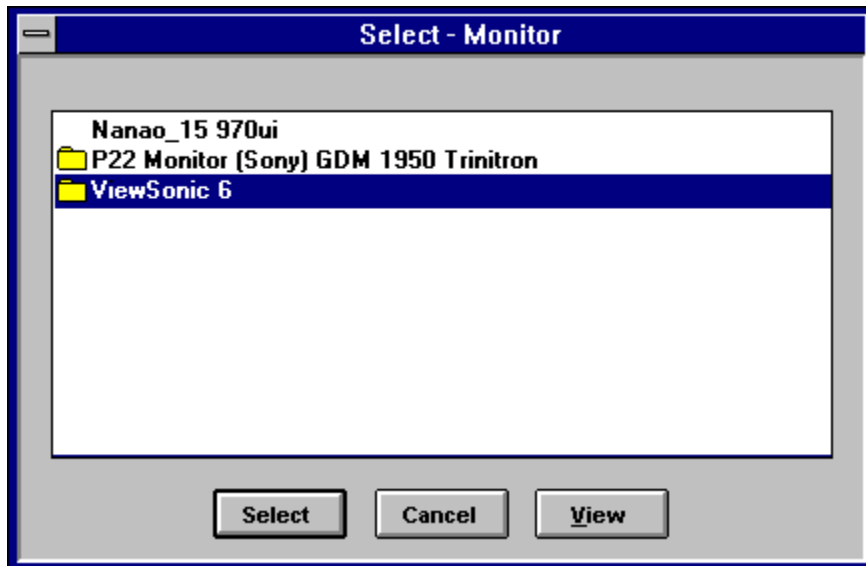
Use this PT type...	To...
<i>Monitor</i>	Compensate for differences in response for a particular monitor to accurately display original colors.
<i>Input-Scanner/ Input-CMYK</i>	Compensate for differences in response for a particular device, emulsion type, and settings to accurately capture original colors.
<i>Input/Import</i>	Acquire or import images stored in a color space different from your system's color space. For example, an image imported using the Kodak Interchange PT is converted from a device-independent to device-dependent color space (such as your system's color space). Image integrity and quality are maintained.
<i>Input and Output- Effects</i>	Apply a variety of color edits and corrections to images when input or output. For example, an Effects PT may increase the overall contrast of an image or decrease its highlights. Effects PT can be used together to create the desired effect.
<i>Output-Printer or Froster</i>	Compensate for difference in an output device, or in ink, film, and/or paper to accurately reproduce displayed colors.
<i>Output-Export</i>	Export images to a color space different from your system's color space. For example, an image exported using the Kodak Inter-change PT is converted from a device-dependent color space (such as your system's color space) to a device-independent color space. Image integrity and quality are maintained.
<i>Monitor-to-Proof Agreement (MFA)</i>	Adjust color to a specified calibration to adjust colors to display on the monitor as they will appear proofed under various viewing conditions.

## Selecting a Monitor Precision Transform

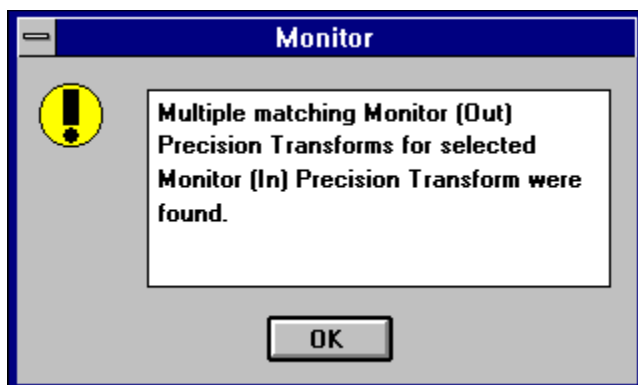
Monitor PT selection is unique in that the PT you choose automatically becomes part of all saved configurations. You cannot create a configuration without a Monitor PT.

### To select a Monitor PT:

1. Click on Monitor.  
The Monitor PT dialog box appears.



All Monitor-type Precision Transforms stored on your system are listed. Monitor PTs must have a matching simulation PT to convert color in or out of the monitor's color space. When more than one PT matches the selected Monitor PT, a dialog box displays asking you to select the appropriate PT.

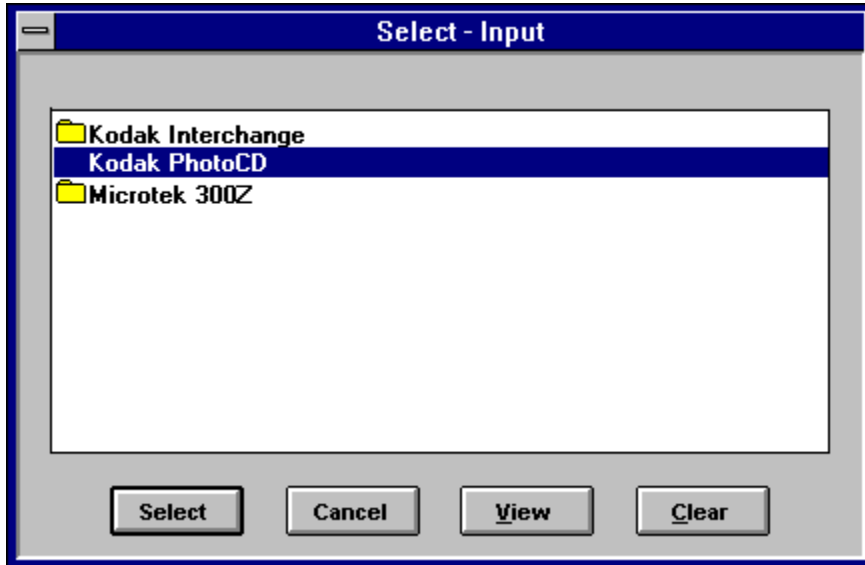


2. Double-click on the desired PT or folder.  
The Color Configure dialog box redisplay with the name of the PT next to Monitor.

## Selecting an Input Precision Transform

### To select an Input PT:

1. Click on Input. The Input PT Selection dialog box appears.



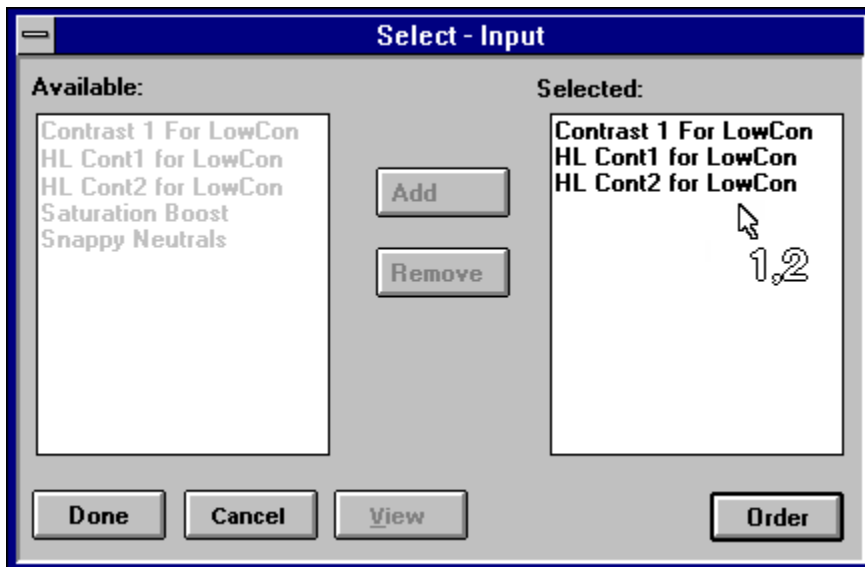
All Input-type Precision Transforms stored on your system, including scanner and import types, are listed.

2. Double-click on the desired PT or folder.

## Selecting Input Effects Precision Transforms

### To select Input Effects PTs:

- 1 Click on Effects, located below the Input button. The Input Effect PT Selection dialog box appears.



All Input Effects-type Precision Transforms stored on your system are listed.

You can select more than one Effects PT. Add the same Effects PT to the list as many times as you like to reapply it during the color correction process as in batch processing. The PTs are applied to an image and processed in the same order they display in the dialog box's Selected: list. The PT at the top of the list is applied first the second PT is applied second and so on.

2. From the Available: list click on the desired PT(s).
3. Click Add to add the selected PT(s) to the Selected: list.  
The name of the selected PT(s) displays in the Selected: list.
4. If needed, click Order to rear-range the order the PTs appear on the list.

When you click Order, the arrow cursor changes to a number (1,2) cursor. Place the number cursor and click on the PT that you want to place at the top of the list. Click on a second PT to position it beneath the previously selected PT.

For example, if you click on Contrast 1 For LowCon, it repositions to the top of the list. If you click on HL



Cont2 For LowCon, it repositions below Contrast 1 For LowCon. If you click on HL Cont1 For Low Con, it moves below HL Cont2 For LowCon.

Repeat this step until the PTs appear in the desired location on the list.

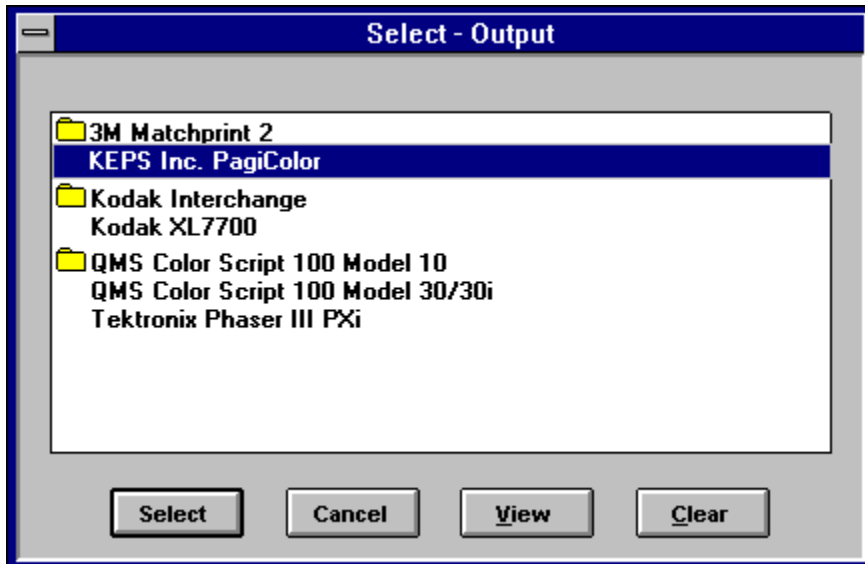
To remove a PT from the Selected: list, select the PT and click Remove. The PT transfers from the Selected : list to the Available: list.

5. Click Done when you finish selecting.  
The names of the PTs display in the Color Configure dialog box. Use the arrow keys to view the names that do not display within the name box.

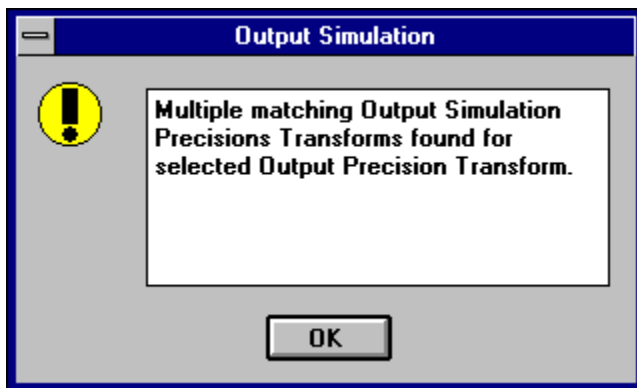
## Selecting an Output Precision Transform

### To select an Output PT:

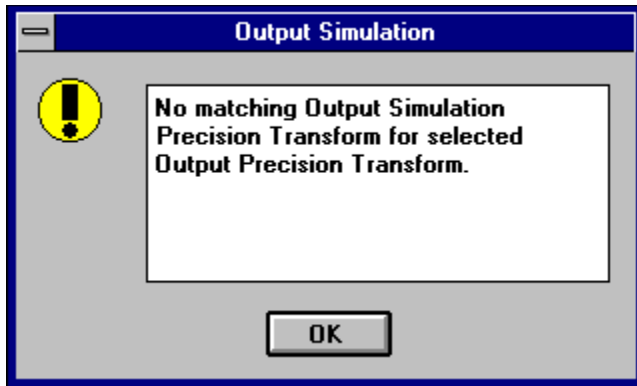
1. Click on Output. The Output PT Selection dialog box appears.



All Output-type Precision Transforms stored on your system are listed, including printer, proofer, and export type. Output and Output Simulation PTs must match to operate in output simulation mode. When more than one Output Simulation PT matches the selected Output PT, a dialog box displays requesting that you select the appropriate PT.



If you select an Output Simulation PT without a matching Output PT, Color Configure cannot compose an Output Simulation PT. The following message appears:

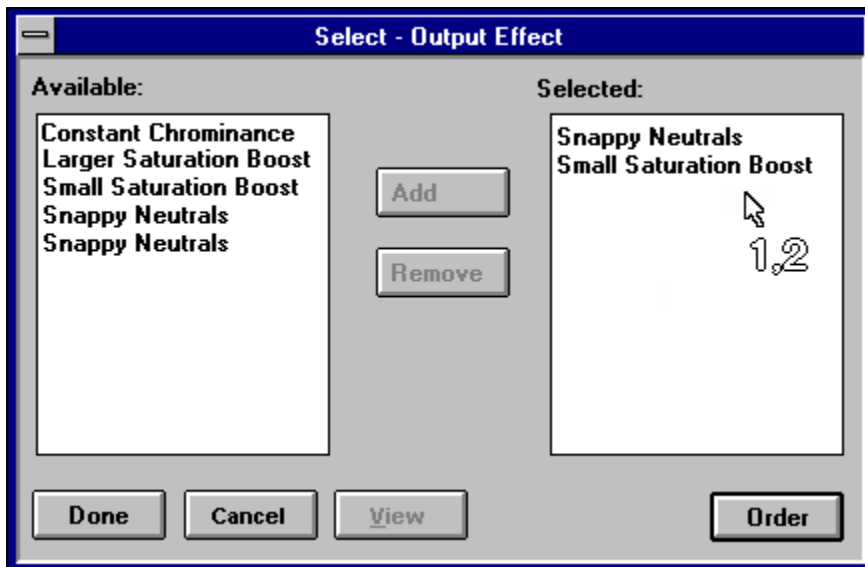


2. Double-click on the desired PT or folder to select it.

## Selecting Output Effects Precision Transforms

### To select Output Effects PTs:

1. Click on Effects, located below the Output button. The Output Effects PT Selection dialog box appears.



All Output Effects-type Precision Transforms stored on your system are listed.

You can select more than one Effect, PT. Add the same Effects PT to the list as many times as you like to reapply it during the color correction process as in batch processing. The PTs are applied to an image and processed in the same order they display in the dialog box's Selected: list. The PT at the top of the list is applied first, the second PT is applied second, and so on.

2. From the Available: list, click on the desired PT(s).
3. Click Add to add the selected PT(s) to the Selected: list. The name of the selected PT(s) appears in the Selected: list.
4. If needed, click Order to rear-range the order the PTs appear on the list.

When you click Order, the arrow cursor changes to a number (1,2) cursor. Place the number cursor and click on the PT that you want to place at the top of the list. Click on a second PT to position it beneath the previously selected PT.

For example, if you click on Snappy Neutrals, it repositions to the top of the list. If you click on Small

Saturation Boost, it repositions below Snappy Neutrals.

5. Repeat this step until the PTs appear in the desired location on the list.

To remove a PT from the Selected: list, select the PT and click Remove. The PT transfers from the Selected: list to the Available: list.

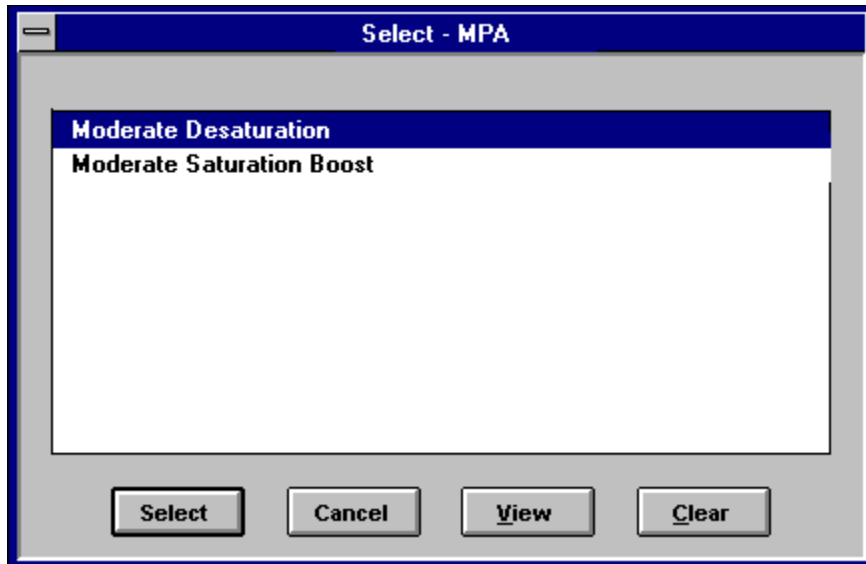
6. Click Done when you finish selecting.

The names of the PTs display in the Color Configure dialog box. Use the arrow keys to view the names that do not display within the name box.

## Selecting an Output MPA Precision Transform

### To select an Output MPA (Monitor-to-Proof Agreement) PT:

1. Click on MPA, located below the Output Effects button. The Output MPA PT Selection dialog box appears.



All Output MPA-type Precision Transforms stored on your system are listed.

2. Double-click on the desired PT or folder.

## Completing a configuration

When you finish selecting PTs, you are ready to save the selections as a configuration. Use the options on the File menu to save and name the current PT selections as a configuration ready for use with Aldus PhotoStyler.

The following information describes the Color Configure Menu bar, including the File, Delete, and View menus and options. The Help menu, also available from the Color Configure Menu bar, is discussed in "Getting Help," earlier in this manual.

File, Delete, and View menu options allow you to save and manage configurations, import and convert third party device color profiles, delete Precision Transforms, and view Precision Transform attributes.

To go to any of the following topics, click on its title:

- [Multiple Dialog Boxes](#)
- [Selecting Precision Transforms](#)
- [PT Selection Options](#)
- [To Add a PT to the Current Configuration](#)
- [Viewing PT Attributes](#)
- [Types of Precision Transforms](#)
- [Selecting a Monitor PT](#)
- [Selecting an Input PT](#)
- [Selecting Input Effects PT](#)
- [Selecting an Output PT](#)
- [Selecting Output Effects PT](#)
- [Selecting an Output MPA PT](#)
- [Completing a Configuration](#)



## The File Menu

Use the options in the File menu to create, manage, and print configurations as well as select preferences, Import third-party device color profiles, and exit Color Configure.

<b>File</b>
<b><u>N</u>ew Configuration...</b>
<b><u>O</u>pen Configuration...</b>
<b><u>R</u>evert</b>
<b>S</b> ave Configuration
<b>S</b> ave Configuration <b><u>A</u>s...</b>
<b><u>R</u>ename Configuration...</b>
<b>S</b> et <b><u>D</u>efault Configuration...</b>
<b>P</b> rint <b><u>S</u>etup...</b>
<b><u>P</u>rint Configuration...</b>
<b>P</b> references...
<b>I</b> mport <b><u>F</u>ilters...</b>
<b>E</b> xit

## New Configuration

Select New Configuration to create a new configuration of PTs. This option clears the Color Configure dialog box, preparing the dialog box for a new configuration of Precision Transforms. For the first configuration you create, all Color Configure dialog box fields display "(No Selection)," indicating no PTs are selected. With one or more saved configurations, the selected Monitor PT appears in the Monitor field.

The system allows you to create and save up to fifteen configurations. The New Configuration option is grayed-out when you reach this limit.

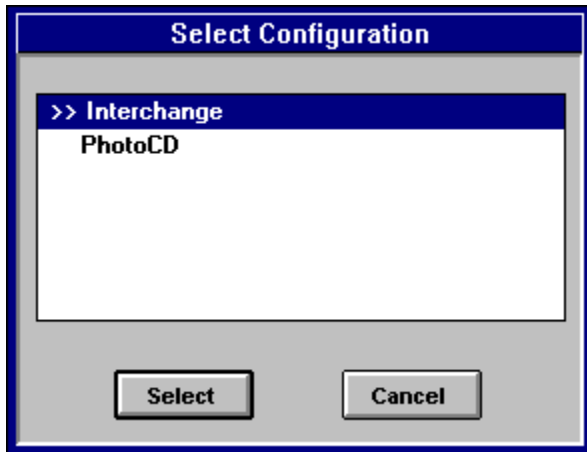
When you have unsaved PT selections, you may receive a confirmation message when you select New Configuration.

For more information on confirmation messages, see "Preferences."

Select Yes to save a Configuration, select No to erase the selections, or select Cancel to exit New Configuration and return to the Color Configure dialog box without creating a configuration.

## Open Configuration

Select Open Configuration to select and open a configuration for reference or modification. The Select Configuration dialog box appears, displaying all configurations currently stored on the system. A double arrow icon to the left of the configuration name indicates the default configuration.



Select the configuration you want and click OK. The Color Configure dialog box appears with the Precision Transforms selections saved in the configuration.

When you have unsaved PT selections, you may receive a confirmation message when you select Open Configuration.

For more information on confirmation messages, see "Preferences,".

Select Yes to save and open a Configuration, select No to erase the selections, or select Cancel to exit Open Configuration and return to the Color Configure dialog box without creating a configuration.

## Revert

Use Revert to return the PT selections in the Color Configure dialog box to restore the selections that displayed when you opened or last saved the Configuration. This option is only available when you modify a configuration without saving it.

## Save Configuration

Use Save Configuration to store changes to the current configuration without modifying the configuration's name.

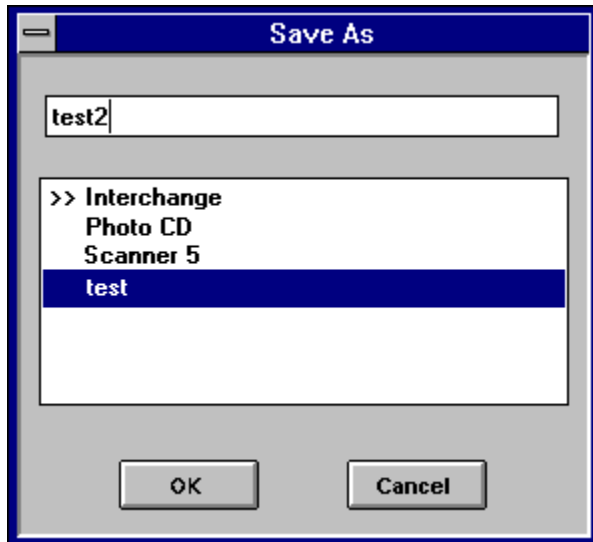
The KODAK PRECISION Color Configure progress box displays as Color Configure composes new PTs. If you make a new Monitor PT selection, previously saved configurations are updated with the PT when you select Save Configuration. The progress box redisplay for every saved configuration.

When finished, the configuration is saved on the system and can be referenced, printed, or modified as desired.

## Save Configuration As

Use Save Configuration As when you want to store a new or modified current configuration with a new name or overwrite an existing configuration with the current configuration.

When you select Save Configuration As, the Save As dialog box displays, listing the names of existing configurations.

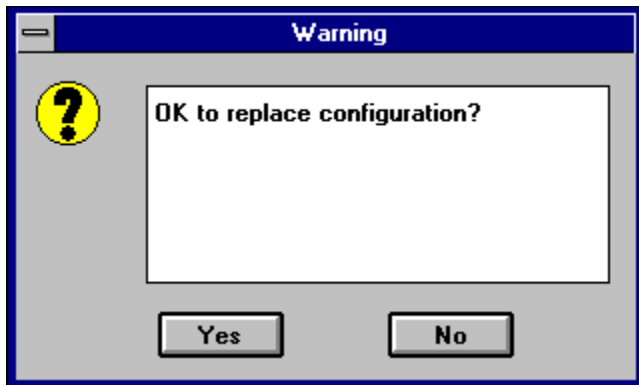


When creating a new configuration, enter a name in the selection box at the top of the dialog box. Save the configuration with a name indicating the type of configuration created. For example, you might create a configuration to correct a group of images with a yellow cast, and name it "corr4yellow." Or, you can create a different configuration for every type of output device you use and save each configuration with a portion of the output device name, such as "ColorGet," "AppPrntr," and so on.

You cannot name a new configuration with a name already in use for another configuration. When a name you choose is already in use, the OK button is grayed-out.

Click OK to store the configuration or Cancel to return to the Color Configure dialog box. If you make a new Monitor PT selection, previously saved configurations are updated with the PT when you select Save Configuration. The progress box redisplay for every saved configuration.

You can double-click on an existing name to place a copy of the name in the selection box. From here, you can save the configuration with a different version of the name or you can overwrite the selected configuration with the PTs selected in the current configuration.



Click Yes to replace the configuration shown in the selection box with the current configuration of PTs, or click No to cancel and return to the Save As dialog box.

The KODAK PRECISION Color Configure progress box displays as Color Configure composes new PTs.

When finished, the configuration is saved on the system and can be referenced, printed, or modified as desired.

You can create and save up to fifteen configurations.

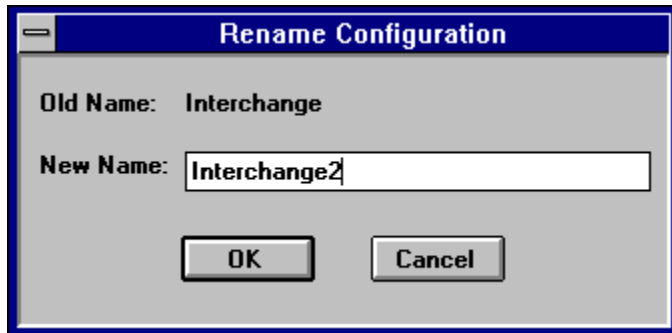
If desired, you can print the information in the configuration to keep a hardcopy record of its contents.

See "Print Configuration".

You can also save modifications to a previously saved and opened configuration. Save Configuration overwrites the PT selections that display in the Color Configure dialog box with the currently selected PTs.

## Rename Configuration

Use Rename Configuration to change the name of an existing configuration. You must assign a new name one that is not assigned to an existing configuration. When you select Rename Configuration, the Rename Configuration dialog box appears.



The name of the current configuration displays to the right of Old Name: and also appears in the New Name: option. Type the new name in the New Name: field. Click OK to save the configuration with the new name. You cannot name a new configuration with a name already in use for another configuration. When a name you choose is already in use, the OK button is grayed out.

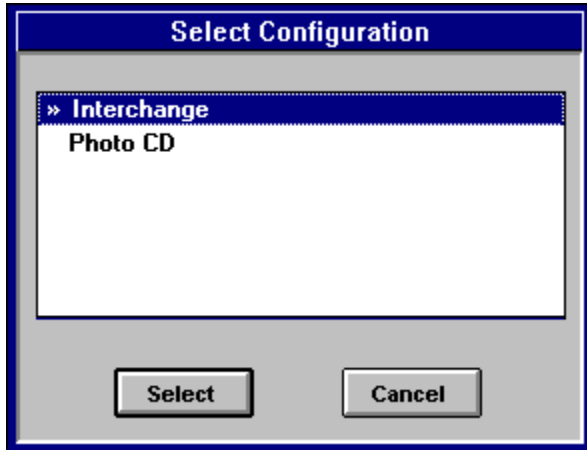
Click Cancel to return to the Color Configure dialog box.



## Set Default Configuration

Set Default Configuration allows you to choose a configuration as the default configuration.

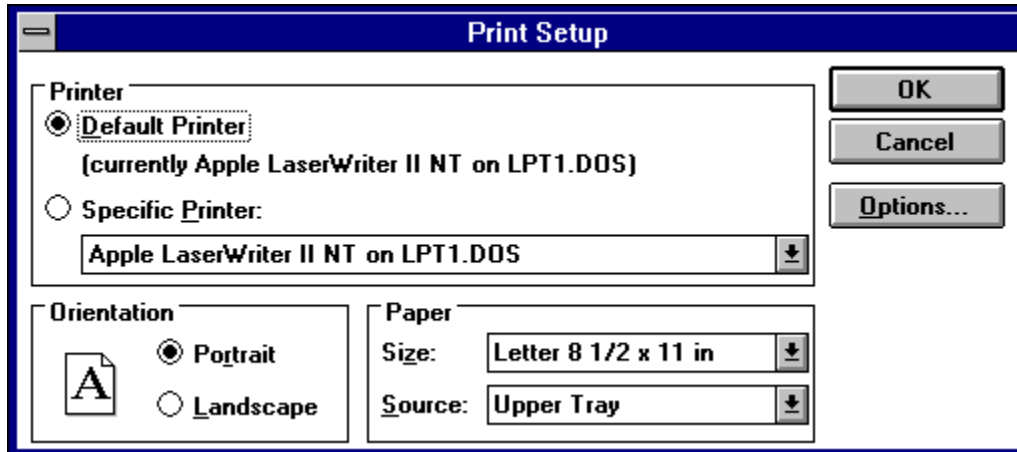
The default configuration is indicated with a double-arrow icon. When you select Set Default Configuration, the Select Configuration dialog box appears, displaying the list of configurations.



Select the desired configuration and click OK. The Setting Default Configuration dialog box appears. The progress bar indicates the percent complete as you wait. When the process is complete, the dialog box closes and the default configuration is created.

## Print Setup

Use Print Setup to specify printer options. When you select Print Setup the Print Setup dialog box displays.

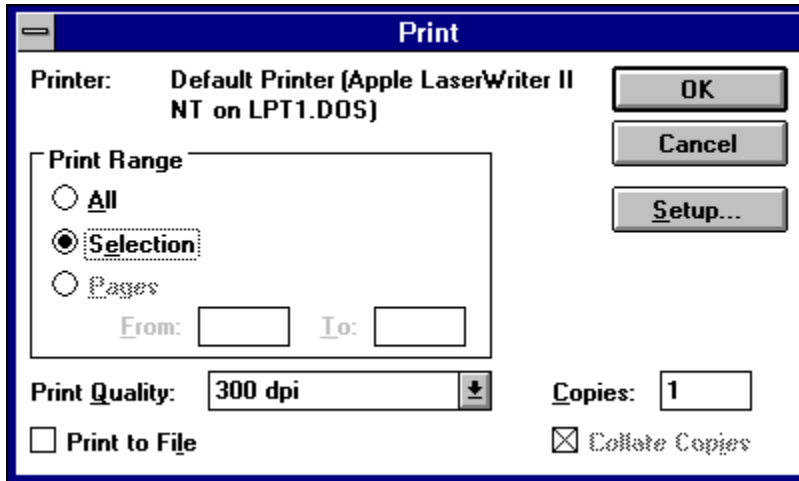


All of the standard Print Setup dialog box functions apply. Use the dialog box to select a printer, the page orientation, the size and source of the paper, margins, memory, fonts, and additional options. A Help feature is included with the Advanced Print Setup options. For more information, see the Microsoft Windows User's Guide.

When you finish your selections, click OK to save the selections or Cancel to ignore your selections.

## Print Configuration

Select Print Configuration to print the current configuration, using the printing settings selected in the Print Setup dialog box.



All of the standard Windows functions apply. Use the dialog box to select the Print Range, the dpi setting, and the amount of copies.

To print all configurations, click All. To print the current configuration only, click Selection. Click Setup to access the Print Setup dialog box and adjust current settings

See "Print Set Up" earlier in this chapter for more information.

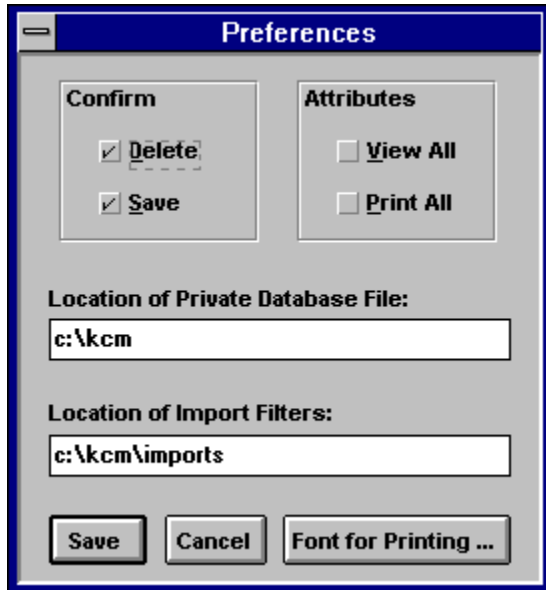
To print, click OK. The information in the configuration, including the PT attributes for each PT in the file, is printed.

## Sample of Printed Configuration

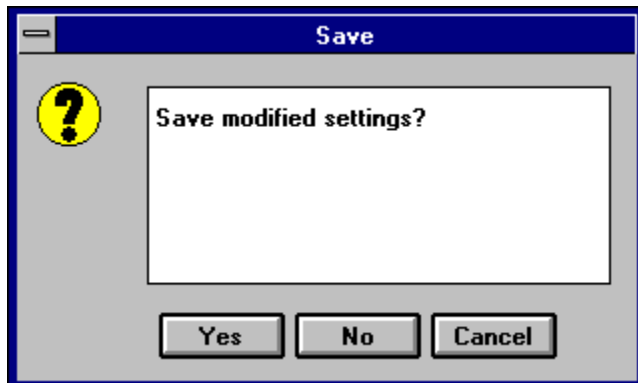
Output	: Kodak XL7700
Amount GCR	: 0.0
BlackDelay	: <Unknown>
BlackShape	: <Unknown>
Brand name of output device	: Kodak
Copyright information	: COPYRIGHT (c) 1991 KEPS, Inc. All
Description of output medium	: XL7700 Std base and colorants
Description of the transform	: RCS to XL7700 RGB
Device type, output	: Dye Sublimation Printer
Linearization Type	: Status A
Medium of output	: Reflective
Model of output device	: XL7700

## Preferences

The Color Configure Preferences dialog box contains several functions that allow you to adjust and set Color Configure controls and functions.



**Confirm Boxes.** Select the Confirm boxes to turn on or off confirmation dialog boxes that display when saving modified configurations and deleting Precision Transforms.





When you first use Color Configure, both the Save and Delete boxes are automatically selected. Deselect a box to disable its associated confirmation dialog box.

**Attributes.** Click Attributes to choose the amount of Precision Transform information that displays when you choose View in the PT Selection dialog boxes. You can choose an abbreviated version, with general detail, or the full version, to view all available PT information. The shortened version is adequate for most users. When you first use Color Configure, the shortened view is selected as the default. If you would like to view all PT information, click View All and/or Print All.

**Location of Private Database File.** You can designate the location of the database for Color Configure by entering a drive and directory name in the Location of Private Database File box.

**Location of Import Filters.** Specify the location of Dynamic Link Libraries (DLLs) third-party filter programs, which import their device color profiles for use with Color Configure. DLLs are typically located in the directory where the third-party program installs the filters. Designate the location by entering the drive and directory containing the DLLs in the Location of Import Filters box. For example, to use import filters in the C: drive, in a directory called \kcm\imports, enter c:\kcm\imports.

For more information on using filters, refer to the user's guide for the thirdparty filters you use.

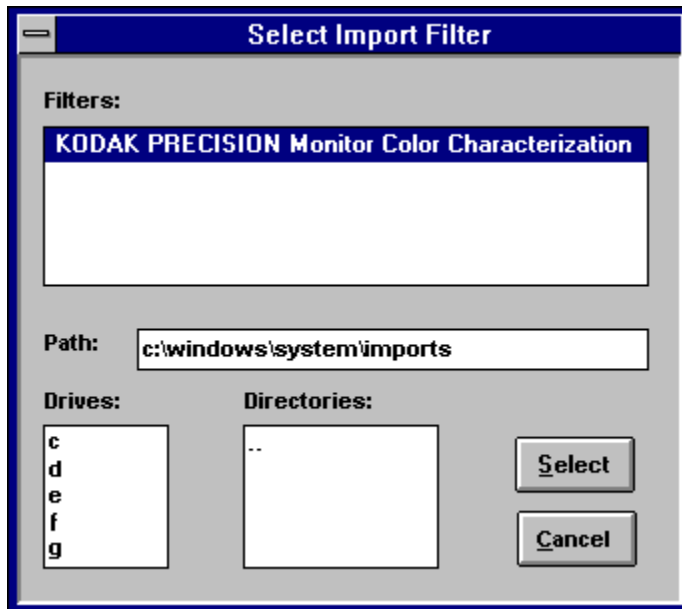
**Fonts for Printing....** Click on the Fonts for Printing... option to display a standard font selection dialog box from which you can choose a font to be used when printing configurations. For more information on selecting fonts, see the Microsoft Windows User's Guide.

**Save/Cancel.** When you finish setting up the Preferences dialog box, click Save to save the current selections or click Cancel to ignore the selections and return to the previous Preferences settings.



## Import Filters

Select Import Filters to access filters (DLLs). The Select Import Filter window opens. For more information on using a filter, refer to the filter manufacturer's user's guide.



A list of filter names appear in the Filters: box. When no filters are present, the box is blank.

### To select a filter:

1. Click the filter name from the Filters: box to select it. A selected filter name appears highlighted.
2. Click Select to open the filter or Cancel to return to the Main window.

When the name of the desired filter does not appear in the list, specify the location of the filter by selecting the drive and directory that contains it. For example, to access filters in the C: drive, in a directory called \windows\system, double-click c from the Drives: box and double-click windows and system in the Directories: box. Names of filters in the selected path appear in the Filters: box.



## Exit

Use Exit to quit Color Configure.

To go to any of the following topics, click on its title:

- [New Configuration](#)
- [Open Configuration](#)
- [Revert](#)
- [Save Configuration](#)
- [Save Configuration As](#)
- [Rename Configuration](#)
- [Set Default Configuration](#)
- [Print SetUp](#)
- [Print Configuration](#)
- [Preferences](#)
- [Import Filters](#)
- [Exit](#)

## Deleting Precision Transforms and Configurations

Delete Precision Transforms and configurations you infrequently or no longer use to conserve disk space.

Use the Delete menu, accessed from the Color Configure Menu bar, to select the type of PT to be deleted, then select the name of the Precision Transform you want to delete.

**Note:** When you delete Precision Transforms and configurations from your system, they are permanently erased .

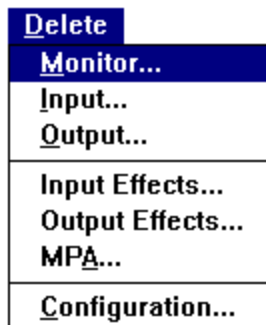
When deleting PTs, the following apply:

- Delete one PT at a time
- PTs stored in a configuration cannot be deleted
- Maintain at least one Monitor PT in the Color Configure database at all times

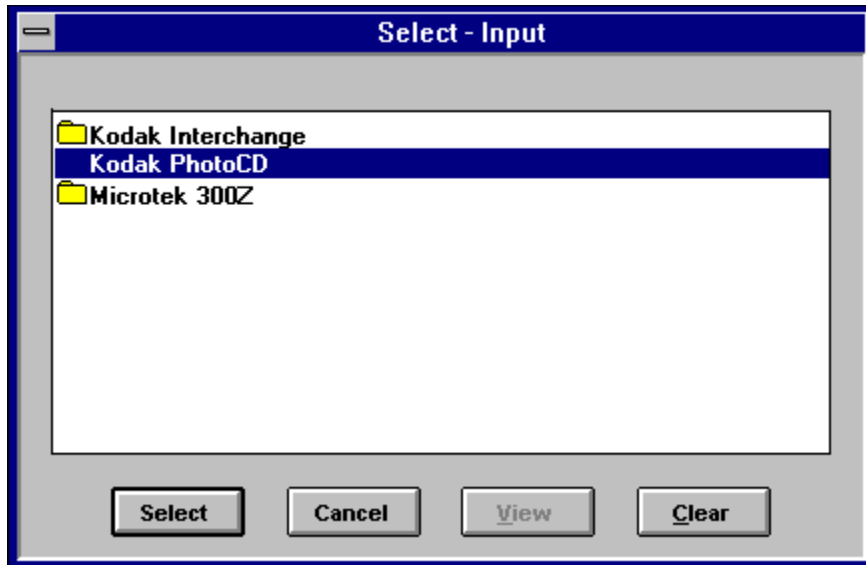
Precision Transforms saved within a configuration appear grayed-out, indicating they are unavailable for deletion .

### To delete a Precision Transform

1. Pull down the Delete menu to select the type of PT. For example, to delete an Input type PT, select the Input option.



The PT Selection dialog box appears, displaying the PTs available for deletion.



2. Click on the name of the PT you want to delete.

3. Click Select to accept your selection .

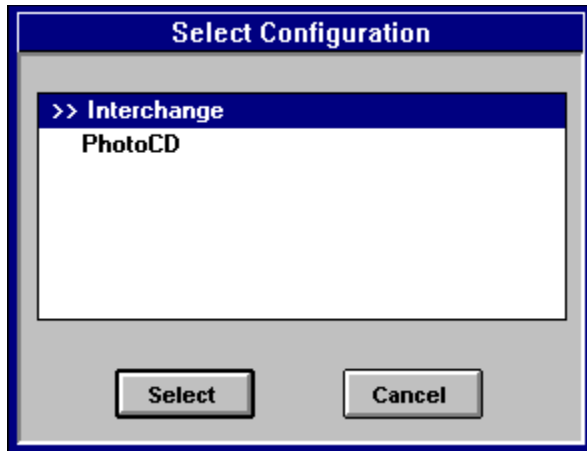
Depending on how you configured your Preferences dialog box, you may receive a Confirm Delete box. [See "Preferences" earlier in this chapter for more information.](#) If you do not receive a Confirm Delete box, the Precision Transform is automatically deleted. If the Confirm Delete box appears, the selected PT name displays in the box.

4. Click Yes to remove the PT from the system or No to ignore the selection and return to the Color Configure dialog box.

5. Repeat steps 2 through 4 until you have removed all unneeded Precision Transforms. Select Cancel when finished.

### **To delete a Configuration**

1. Pull down the Delete menu to Configuration. The Select Configuration dialog box appears with the name of the current configuration selected.



2. If you do not want to delete the current configuration, select the desired configuration.
3. Click OK.

Depending on how you configured your Preferences dialog box, you may or may not receive a Confirm Delete box. See "Preferences" earlier in this chapter for more information.

When you do not receive a Confirm Delete box, the configuration is automatically deleted. If the Confirm Delete box appears, the name of the selected configuration displays in the box.

4. Click Yes to remove the file from the system or No to ignore the selection and return to the Color Configure dialog box.
5. Repeat steps 2 through 4 until you have removed all unneeded configurations. Select Cancel when finished.

To go to any of the following topics, click on its title:

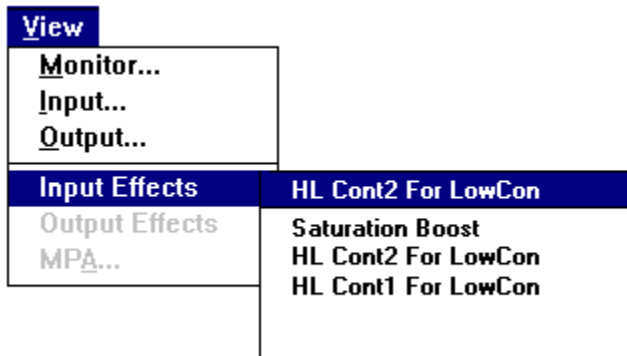
[To Delete a Precision Transform](#)

[To Delete a Configuration](#)

## Using the Menu Bar to View PT Attributes

Precision Transform attributes can be viewed from the Menu bar as well as from the PT Selection dialog boxes (see "[Viewing PT Attributes](#)" earlier in this chapter). The information you view is for the PT selected in the current configuration.

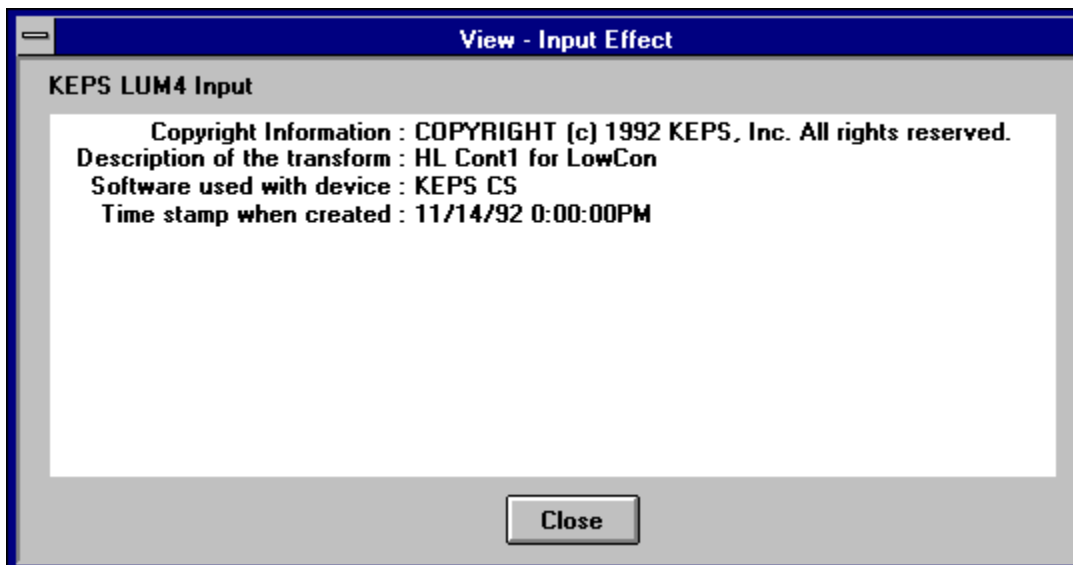
Pull down the View menu to select the type of PT, such as Monitor, Input, or Output. Pull down to Input Effects or Output Effects to view Effects PTs. The names of the available PTs display to the right of each option.



Depending on how you configured your Preferences dialog box, you may view all of the information available for a PT. [See "Preferences" earlier in this chapter for more information](#)

### To View PT attribute information

1. Pull down the View menu to the type of PT. For example, to view the configuration's Input PT attributes select the Input option. The View PT Input dialog box appears, displaying the name of the PT at the top left.



2. When you finish viewing the information, click Close to return to the Color Configure dialog box.



## Ending Your Color Configure Session

When you finish configuring PTs, save your configuration, then choose Exit from the File menu to quit Color Configure. Your PT configuration is ready to use with Aldus PhotoStyler.

## Glossary

**Please click on a term for an explanation:**

[Acquire](#)

[Attribute](#)

[Configuration](#)

[Color space](#)

[Current configuration](#)

[Dialog box](#)

[Default](#)

[EPS file format](#)

[Export](#)

[File](#)

[Filename](#)

[Image](#)

[Import](#)

[KODAK PRECISION Color Processor \(CP\)](#)

[Microsoft Windows](#)

[Precision Transform \(PT\)](#)

**Acquire:** To obtain an image from a scanner or Photo CD disc.

**Attribute:** Object or characteristic associated with a Precision Transform. Typical attributes are names and models of devices, description of PTs, the date and time a PT was created, and so on.

**Configuration:** A group of Precision Transforms.

**Color Space** A method of assigning a coordinate system to clearly identify colors.

**Current Configuration:** The configuration displayed in the Main dialog box. The current configuration can be saved, modified, or deleted.

**Dialog Box:** A type of menu that requests or provides information. Use dialog boxes, such as the Color Configure Main dialog box, to select options or enter information before you continue with the program.



**Default:** A menu or program selection automatically made by a computer unless otherwise indicated or changed. For example, the default configuration automatically displays each time you start up Color Configure.

**EPS File Format:** An acronym for Encapsulated PostScript, a file format that can be read by many PostScript language-structured software applications.

**Export:** A means of sending an image in a specified format for use with another system or software application.

**File:** A named collection of related data organized for a specific purpose.

**FileName:** The name assigned to a file for the purpose of storing and retrieving. Color  
Configure filenames follow DOS file naming conventions.

**Image** The visual representation of the original subject on the monitor.

**Import:** A means of sending an image in a specified format for use with another system or software application.

**KODAK PRECISION Color Processor (CP):** A Kodak-supplied software module that performs the color-space transformations required by the Color Management System.



**Microsoft Windows:** A graphical user interface (GUI) for the personal computer by Microsoft Corporation.

**Precision Transform (PT):** A set of device-independent or device-dependent data in a format defined by Eastman Kodak, that enables accurate conversion between one representation of color and tonal scale and another.

# KODAK PRECISION COLOR CONFIGURE User's Guide

For use with Aldus® 2.0  
Reproduced by Aldus Corporation with permission from Eastman Kodak Company.

## FIRST EDITION

October 1993

## COPYRIGHT

© Eastman Kodak Company. All rights reserved. No part of this publication may be reproduced, transmitted, transcribed, stored in a retrieval system, or translated into any language in any form by any means without the written permission of Aldus Corporation.

## SOFTWARE LICENSE NOTICE

Your license agreement with Aldus Corporation, which is included with the product, specifies the permitted and prohibited uses of the product. Any unauthorized duplication or use of KODAK PRECISION Color Configure, in whole or in part, in print, or in any other storage and retrieval system, is prohibited.

## RESTRICTED RIGHTS LEGEND

Use, duplication, or disclosure by the Government is subject to restrictions as set forth in subparagraph (c)(1)(ii) of the Rights in Technical Data and Computer Software clause at DFARS 252.227-7013 and paragraph (d) of the Commercial Computer Software-Restricted Rights at FAR 52.227-19.

Subcontractor/Manufacturer is Aldus Corporation, 411 First Avenue South, Seattle, Washington 98104-2871.

## LICENSES AND TRADEMARKS

Aldus and the Aldus logo are registered trademarks and TIFF is a trademark of Aldus Corporation. PhotoStyler is a registered trademark of U\_Lead Systems, Inc., licensed to Aldus Corporation. KODAK is a registered trademark and KODAK Photo CD is a trademark of Eastman Kodak Company. Microsoft and MS-DOS are registered trademarks and Windows is a trademark of Microsoft Corp. Other product or corporate names may be trademarks or registered trademarks of other companies, and are used only for explanation and to the owners' benefit, without intent to infringe.

## KODAK PRECISION COLOR CONFIGURE AND MICROSOFT WINDOWS

KODAK PRECISION Color Configure operates in a graphics environment called Microsoft Windows, created by Microsoft Corporation. An extension of the MS-DOS operating system, Microsoft Windows gives a standard look and feel to KODAK

PRECISION Color Configure and all other Windows applications.  
To run KODAK PRECISION Color Configure  
under Microsoft Windows, you need to license and install  
Microsoft Windows.

#### [Aldus Corporation](#)

411 First Avenue South  
Seattle, Washington 98104-2871  
U. S. A.  
Tel. 1 206 622 5500

#### [Aldus Pacific Rim](#)

411 First Avenue South  
Seattle, Washington 98104-2871  
U. S. A.  
Tel. 1 206 622 5500

#### [Aldus Europe Limited Aldus](#)

Aldus House  
West One Business Park  
5 Mid New Cultins  
Edinburgh Scotland  
United Kingdom, EH11 4DU  
Tel. 44 31 453 2211

For service and support in the United States and Canada, please  
contact Aldus Corporation. For service and support in South  
America and East Asia, please contact Aldus Pacific Rim For  
service and support in Africa and Europe, please contact Aldus  
Europe Limited. Outside these areas, please contact your local  
distributor or dealer. If you purchased your Aldus software  
through a hardware manufacturer, technical support for your  
software may instead be provided as part of the system support  
from the hardware manufacturer.

