

# Windows Run!

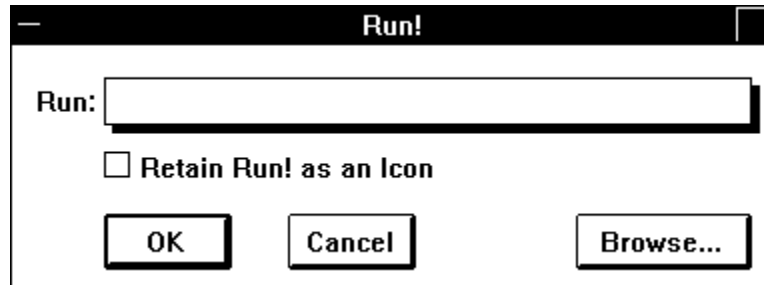
Version 2.0

By B.J. Safdie

Windows Run! is a little utility I wrote so that I can have a "run dialog" available from my LAUNCH Menu. If you don't use the LAUNCH utility, then you can also use Windows Run! as a desktop icon. To install the program simply copy it to a directory in your path.

## To Use With LAUNCH

Add the line, "**Run... = winrun.exe**" to your LAUNCH.INI file. Next time you load LAUNCH, the **Run...** menu item will be available. When you select the **Run...** menu item from the LAUNCH menu, the following dialog will appear:



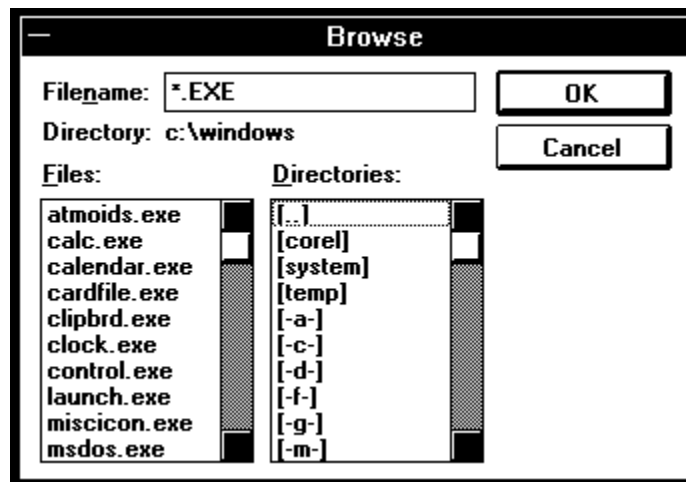
You will note that it is similar to the "run dialogs" available from Program Manager and the MS-DOS Executive. Simply type in a file name and press the Enter Key or click the OK Button.

## Windows Run! as a Desktop Icon

The **Retain Run! as an Icon** checkbox allows you to specify that Windows Run! should "hang around" as an icon on the desktop. When this checkbox is checked, Windows Run! will not terminate when either the OK or Cancel Buttons is clicked -- it will minimize itself. When you double click the Windows Run! icon, the dialog will reappear. The program will terminate normally if you **Close** it from the System Menu regardless of the state of the checkbox.

## The Browse... Button

If you are not sure of the path or file name for a program you want to run, click on the **Browse** button and the following dialog will appear: (it is basically a standard File.Open-type of dialog)



## Zip File Contents

WINRUN.EXE is the Windows Run! executable file (12,800 bytes).  
WINRUN.WRI is this file: the Windows Run! doc in Windows Write format.

### **Bugs**

You may send any bug reports or suggestions to me via CompuServe:  
BJ Safdie, CompuServe Account: 76066,1212

### **Disclaimer/Conditions of Use**

Windows Run! is released into the public domain for non-commercial use. Windows Run! is offered "as-is" and the author is not implicitly or explicitly responsible or liable for ANYTHING! There are no implicit or explicit warranties or guarantees for this program. If you use this program, you are doing so at your own risk.

**Note:** if your printer settings are set to 75 dpi, the snapshots of the dialogs will be a readable size when you print this doc or view it in Windows Write.