

Time -- Yet Another Digital Clock for Microsoft Windows

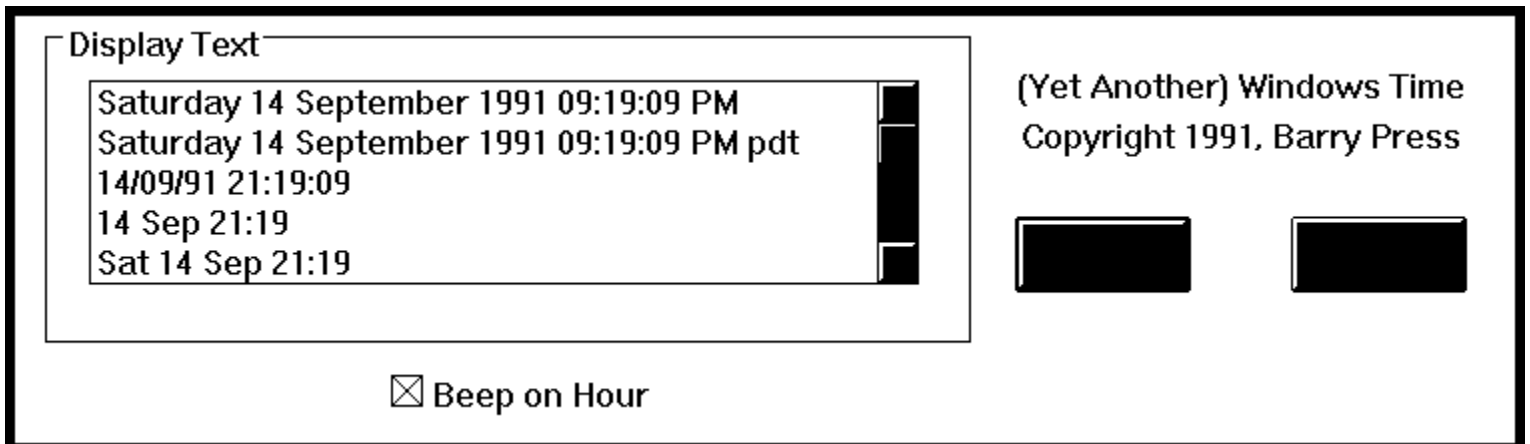
Time is a digital clock for Windows. You can select the format of the display, and can choose where the window sits on the screen. The window does not force itself to the front when covered, so it's compatible with all Windows screen blankers. The time display (one of its formats, at least) looks like this:

Saturday 14 September 1991 09:18:32 PM

Time is started by the command *time.exe*. Depending on the program to which you issue the command, the shorter version *time* may be interpreted as the builtin DOS command *time*, which isn't what you want. The first time the program starts on your machine, it will choose its location on the screen. You can position the window by holding down the left mouse button in the window and dragging it to the desired position.

The next time the program starts, it will place its upper left corner where you positioned it, with the exception that it will adjust the position if required to force the entire window onscreen. This means that, if you want the window to always be positioned in the lower right-hand corner, you can move the window as far right and down as possible, then terminate (Alt-F4) and restart the program. The window will remain aligned with the edge no matter how long or short the date string becomes.

Time also gives you control over its format and whether or not it beeps every hour. To control these options, mouse on the window and then hit F1. The following dialog box will appear:



Choose the time format you want by mousing on the corresponding model line in the dialog box. Select or deselect beeps on the hour by checking or unchecking the box for Beep on Hour. Install the new options by hitting OK; cancel all changes by hitting Cancel.

I wrote Time simply because none of the many I'd pulled off of BBS's or other sources did things the way I wanted. The program is Copyright 1990, 1991 by Barry Press. This version has never been released by me into the public domain. No warranties are expressed or implied, including merchantability or suitability for a particular purpose. No responsibility will be assumed by the author for any loss or damage due to its use.

Barry Press
September 14, 1991

CIS: 72467,2353
Internet: press@venice.sedd.trw.com
U.S. Mail:
4201 Empress Avenue
Encino, CA 91436-3504