

# Hit-N-Run 1.0

Copyright 1996, Accel Software

Thank you for trying Hit-N-Run 1.0! **The Windows 95 utility that conveniently makes your program groups and a launch pad one easy mouse click away.** Hit-N-Run features the following:

- A single window includes both a launch pad and your program groups. This [main window](#) is resizeable and includes many advanced features.
- You can conveniently [drag and drop](#) links from an Explorer window onto the launch pad in order to create new launch links.
- You can [drag and drop](#) any document from an Explorer window onto any launch pad item to open the item using the application
- Whenever you launch an application using Hit-N-Run, it remembers it in the [Rerun](#) list so you can easily re-launch the application.
- You can conveniently open any program group using the **open** item when walking through cascading program group menus.
- [Search and Run](#) lets you quickly search your entire set of program groups for an application and run it.
- [Browse and Run](#) lets you browse through your entire hard disk for an application to run.

The [Table Of Contents](#) also provides links to all major Hit-N-Run features.

Hit-N-Run is a copyrighted commercial product that you are granted the limited right to evaluate for 30 days. If you choose to use Hit-N-Run beyond the 30-day evaluation, you are required [to purchase a registered version](#). If not, you are asked to kindly stop using this trial version and remove it from your computer. Failure to comply with these terms is an infringement on the U.S. copyright laws. Above and beyond all that legal mumble jumbo, there are many positive [reasons to register](#) copy of Hit-N-Run.

## **Disclaimer**

Accel Software disclaims any responsibility for damages, either direct or consequential, that may result from the use of this software.

# Table Of Contents

## Hit-N-Run

Copyright 1996, Accel Software

[Introduction](#)

[Requirements](#)

## Windows

[Main Window](#)

[Search And Run](#)

[Rerun](#)

[Browse And Run](#)

## Other Features

[Drag And Drop Features](#)

## Registration Information

[Reasons To Register](#)

[Registration Form](#)

[Pricing](#)

## Other Stuff

[Known Bugs And Problems](#)

[Contacting Accel Software](#)

[Frequently Asked Questions](#)

[Reporting Bugs](#)

[Un-Install Instructions](#)

## **System Requirements**

### **Basics**

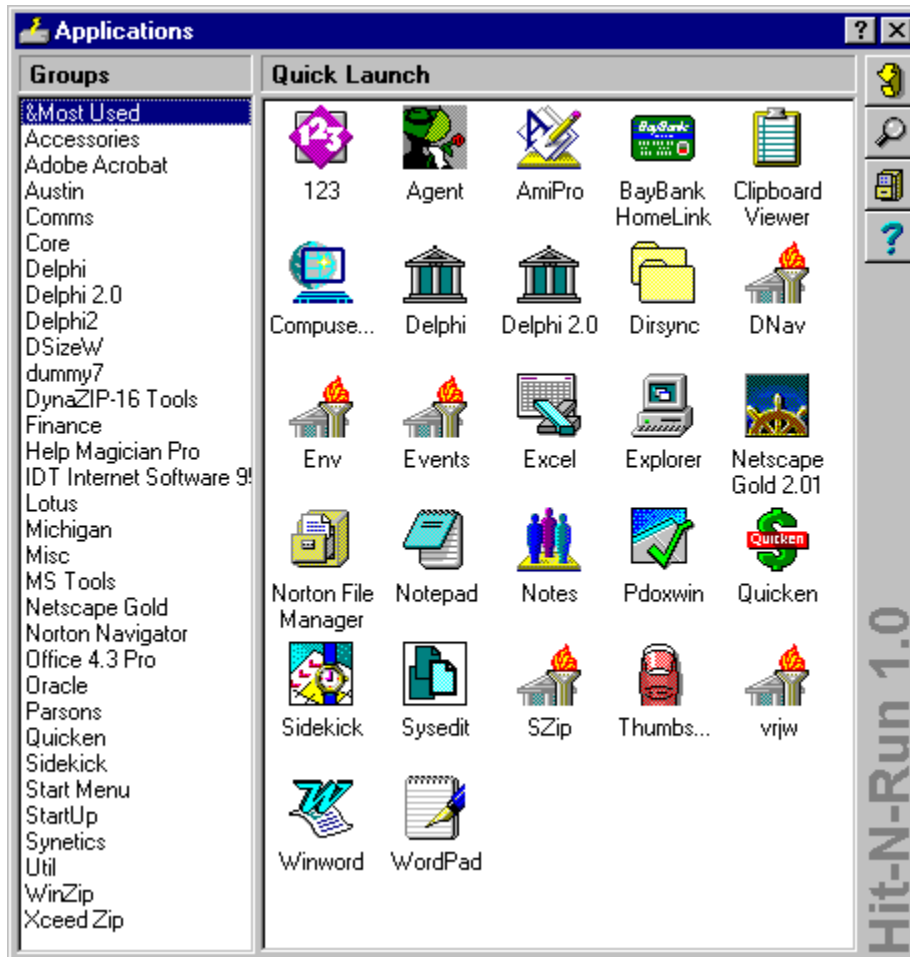
- A IBM-PC compatible computer running **Microsoft Windows 95**.
- 1 MB hard disk space

### **Nice To Have**

- Pentium or better
- 16MB of RAM

## Main Window

The Hit-N-Run Main Window provides the best of both worlds from the Windows 95 [Start]/[Programs] feature and the Windows 95 Explorer. This single adjustable split window displays all **program groups** on the left, easily accessible via convenient Windows 95-style cascading popup menus; and a flexible Explorer-style **launch pad** on the right.



## Program Groups

This panel in the main window displays the top-level contents of your main program groups. When you single-click any line-item, Hit-N-Run will display Windows 95 style popup menus, expanding on each program group and allowing you to launch applications. In addition, Hit-N-Run popup menus also allow you to open an Explorer window for a single group by selecting the **Open** item at the top of the popup menu.

## Launch Pad

This Explorer-style panel provides a convenient place for you to store all frequently-used applications. Launch pad items can be easily created by simply [dragging and dropping](#) items from the Windows 95 Explorer onto any white-space area of the launch pad. You can also [drag and drop](#) a document onto a launch pad item to open the document using the application. Items can be deleted by selecting the item with the mouse or keyboard and

hitting the [delete] button. The properties of an item can be accessed by right-clicking over an item and choosing the **properties** menu item. Items can be renamed by clicking the textual portion of an item after it is already selected, and adjusting the name as needed.

The launch pad is automatically ordered alphabetically and hard-coded to display items using large icons. When items are added, removed, or renamed, the launch pad is automatically resorted appropriately.

## Accessing Other Windows



[Rerun Window](#)



[Search And Run](#)



[Browse And Run](#)

## Customizing Via Windows 95 Explorer

When you right-click the main window, Hit-N-Run displays a **context menu**, displaying additional main window options.

Your program groups are stored in a hierarchy of directories on your hard disk. The **Edit/Groups** menu item opens an Explorer window in this directory, allowing you to manipulate and browse this hierarchy using the full power of Explorer. Likewise, the **Edit/Rerun** menu item opens an Explorer window in the directory containing all your Hit-N-Run rerun links, allowing you to rename, delete, and copy rerun links, etc as needed.

## Window Modes

When you right-click the main window, Hit-N-Run displays a **context menu**, displaying additional main window options.

By default, Hit-N-Run's main window operates in a mode called **Auto-Surface**, allowing you to easily surface Hit-N-Run with a single mouse click on the edge of your display. When Hit-N-Run operates in this mode, it creates a very thin shadow window at the right or left edge of your computer's screen. The shadow-window always appears on the side closest to the Hit-N-Run main window. Hit-N-Run always surfaces when you click the shadow window, regardless of what application is currently running and how full your display currently is. Simply move your mouse to the edge of the screen where you left Hit-N-Run, click the mouse, and Hit-N-Run will appear.

If the shadow-window mode causes compatibility problems, you can also change to **Normal** mode, which can be set using the same context menu. In this mode, the shadow window is disabled, and you must click the Hit-N-Run icon or any part of Hit-N-Run's main window in order to surface Hit-N-Run.

**These are your program groups.** You normally see these in Windows 95 when you click **[Start][Programs]**.

If you click on one of the program group items listed in this panel, the applications within that group will be displayed in a popup menu.

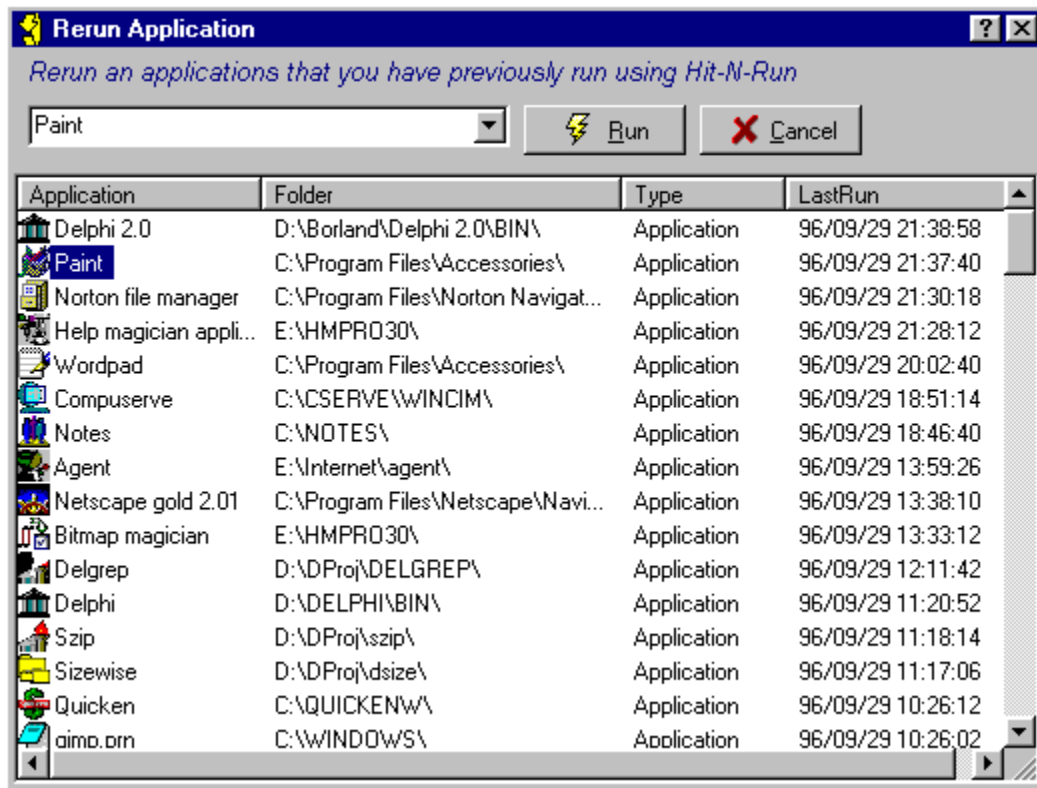
**This is your launch pad.** It basically contains any applications or shortcuts that you have created directly in your main program group folder.

You can launch any item in the launch pad by simply double-clicking the item. An item's properties can be adjusted by right-clicking the item and choosing the properties menu item. Items can be added to the launch pad by dragging and dropping shortcuts from the Windows 95 Explorer, File Manager, or any other File Manager-compatible program.



## Rerun Application [F3]

Use the Rerun feature to quickly launch an application that you ran recently. Hit-N-Run maintains a list of applications that you ran, and displays this application list as follows:



To rerun an item in the list, simply double-click it, or single-click the item and choose [OK]. The list can be sorted different ways by clicking the desired column heading. The rerun list is maintained as a directory that contains links to applications. You can explore this directory and edit items by choosing the **Edit/Reruns** menu item from the Hit-N-Run [main window](#).



This is a combination edit box and pull-down history list. As you start typing the name of an application in this box, the list below automatically advance to the application item that starts with the word(s) you have typed. You may optionally open the history list box and select previously rerun applications.

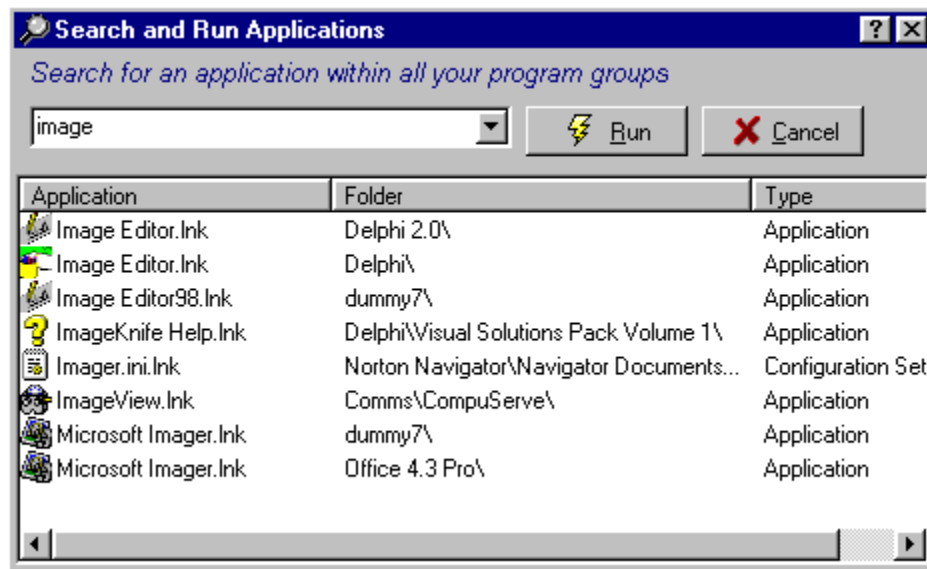
This is a list of previously run applications, including the program group folder, application type, and the date/time it was last run. An application can be rerun by double-clicking the item with the mouse or hitting [return] while an item is selected.

The list can be resorted in various orders by clicking any column heading. The selected item will automatically change when you type a word in the edit box above the list.



## Search And Run [F4]

The Search And Run feature allows you to search your entire set of program groups for any application that contains a search expression. This uses an incremental search feature, which means that the list is updated very quickly as you are typing in your search expression. The search window is displayed as follows:



**This is a combination edit box and pull-down history list.**

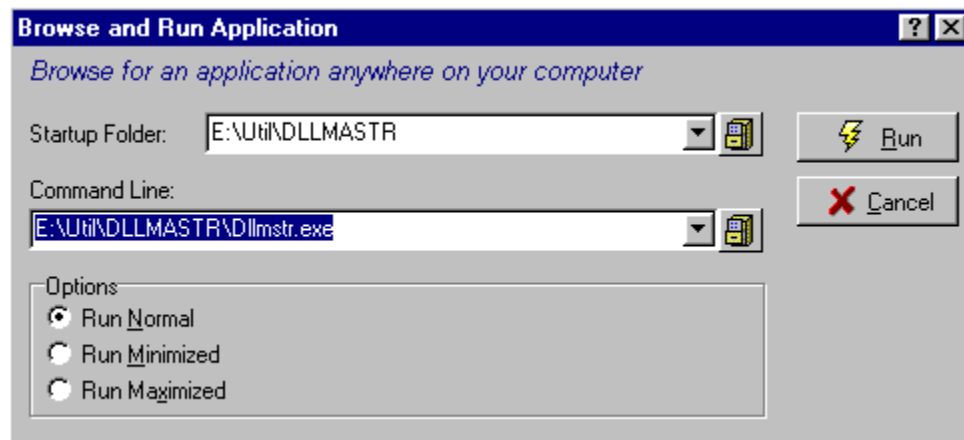
The List below this box automatically displays all program group applications that contain the word(s) you have typed in this box. This provides a very easy way for you to search for an application anywhere in you program groups.

This is a list of applications from your program groups that contain the word you typed in the search edit box above. An application can be run by double-clicking the item with the mouse or hitting [return] while an item is selected.



## Browse And Run [F5]

Use Browse And Run when you want to launch an application that cannot be found within your program groups. Browse And Run allows you to browse your entire hard disk, or a network, locate a desired application, and launch it. Here is an example of the Browse And Run window:



## **Drag And Drop Features**

Hit-N-Run supports full drag and drop functionality from any File Manager-compatible application including Windows 95 Explorer, Norton File Manager, and many others. This feature allows you to easily create Hit-N-Run launch pad application items and open documents using Hit-N-Run launch pad applications.

### **Creating Launch Pad Applications**

The Hit-N-Run launch pad provides an easy and convenient place to put applications that you use most frequently. The launch pad stores your applications as links contained within the same directory where Windows 95 stores all your program groups. You can add applications to the launch pad by simply dragging either an executable file, document, or link from a File Manager-compatible application and dropping the item on any white space in the launch pad. When you do this, Hit-N-Run creates a new link to that item in the program group area, which in turn makes it visible on the launch pad.

### **Opening Documents Using Launch Pad Applications**

Documents can be opened using any compatible launch pad application by simply dragging the document from a File Manager-compatible application and dropping the item onto the desired launch pad application icon. When you do this, Hit-N-Run will start up the selected application and load the dragged document. This makes it very easy to open text documents, etc, that are not named appropriately to take advantage of associations.

## Reasons To Register

You are currently using a 30-day trial version of Hit-N-Run. Its main purpose is to give you the opportunity to try the product before paying money for it. If you do not like the product, you should stop using it, remove it from your computer, and pay nothing. If you do like it, you have a legal and ethical obligation to [pay for it](#). Here are some more reasons why you should [buy it](#):

- You will receive a special registered version that no longer nags you to register your copy. Its **all yours**, and it will never ever ask you for money again!
- You will be notified of updates, fixes, and enhancements when they become available.
- If you report bugs, [Accel Software](#) will provide a response indicating if/when a fix/correction will be available.
- You will receive **free** updates (bug fixes) via email at your request. Non-email users can receive bug fix updates for the **cost of the media and shipping**.
- You will be doing your part to support a struggling product line that you feel is valuable and makes a positive contribution to mankind.
- [Registration](#) is [cheap](#) and easy!
- You will sleep better.



# Registration Form

**Yes, I would like to purchase a registered version of Hit-N-Run!**

**Instructions:**

- Please print this page by selecting File/Print Topic from your help system.
- Fill in the blanks.
- Enclose payment or PO as described below
- Mail the address provided below

**Your registered version will be received within two weeks.**

_____	<u>Single User</u>	@ \$15 each = \$ _____
	(Payment must be enclosed)	
_____	<u>Corporate User</u>	@ \$25 each = \$ _____
_____	<u>Site License</u>	@ \$100 each = \$ _____
_____	<u>Enterprise License</u>	@ \$300 each = \$ _____
Mass Sales/Use tax (Mass residents only)	5% +	_____
Surcharge for Foreign Orders		+ _____ 10
Total		\$ _____

Desired Disk Format:  
[ ] 3.5"      [ ] 5.25"

Company \_\_\_\_\_  
Name \_\_\_\_\_  
Address \_\_\_\_\_  
Address \_\_\_\_\_  
Address \_\_\_\_\_  
  
Phone \_\_\_\_\_  
Email \_\_\_\_\_

Where Did You Get Hit-N-Run?

\_\_\_\_\_  
\_\_\_\_\_  
\_\_\_\_\_

Please Mail To:

Accel Software  
Hit-N-Run Registration  
108 Hill Street, Suite #4  
Stoneham, MA 02180

- \* Make checks payable to Accel Software
- \* Payment must be made in checks drawn on US BANKS in US DOLLARS, or CASH
- \* Single User registrations must be PREPAID
- \* Corporate, Site License, and Enterprise registrations are billed if a PO is enclosed.

## Pricing

Hit-N-Run registration pricing is as follows:

### **Single User - \$15.**

Entitles the purchaser to use Hit-N-Run on a single computer at a time. SORRY, NO PO'S OR BILLING IS ALLOWED WITH THIS REGISTRATION PLAN.

### **Corporate User - \$25.**

Entitles a single user employed by the purchasing organization to use Hit-N-Run on a single computer at a time. Order can be PREPAID, or purchaser can be BILLED if a corporate/government PURCHASE ORDER is enclosed with the registration form.

### **Site License - \$100.**

Entitles an unlimited number of users residing at a SINGLE LOCATION of an organization to use Hit-N-Run. Order can be PREPAID, or purchase can be BILLED if a corporate/government PURCHASE ORDER is enclosed with the registration form.

### **Enterprise License - \$300.**

Entitles an unlimited number of users residing at an unlimited number of locations of a single corporation or government agency to use Hit-N-Run. Order can be PREPAID, or purchase can be BILLED if a corporate/government PURCHASE ORDER is enclosed with the registration form.

**Please fill out a [Registration Form](#) to order Hit-N-Run.**

## Known Bugs And Problems

### Version 1.0B (beta)

- When you launch an application from an Explorer window, Hit-N-Run **does not** create a **rerun** entry for that run.

## Reporting Bugs

### Instructions

In order for use to effectively respond to a problem/bug report, we need certain information about your system, how it behaves, and how the problem is produced. Please provide the information described below and forward to [Accel Software](#):

- Today's Date
- Your registration number (if you are a registered user)
- Updated contact information including your name, address, phone number, and email address.
- Your computer make and model. If you know how much memory your system has, disk space, and graphic resolution, that would be helpful too.
- Indicate whether the problem can be easily, consistently reproduced--or if it only happens intermittently.
- Describe the problem and under what conditions it occurs.

Please mail or email your problem report to [Accel Software](#). All bug/problem reports will be considered when producing software updates/enhancements; however, acknowledgement of bug/problem reports will only be provided for **registered users**.

## **Contacting Accel Software**

Accel Software can be contacted via email or regular mail as follows:

### **Email Address**

74010.2100@compuserve.com

### **U.S. Mail Address**

Accel Software  
108 Hill Street, Suite #4  
Stoneham, MA 02180

**Comments, Suggestions, and [Bug Reports](#) are welcome!**

## **Un-Install Instructions**

- Removed the directory where you installed HITNRUN.EXE.
- Remove all links to HITNRUN.EXE.
- Delete HITNRUN.INI from your Windows directory.

## Frequently Asked Questions

### **How can I make Hit-N-Run startup automatically when Windows 95 boots?**

Create a link to HitNRun.exe and copy or move the link to your Startup folder in your program groups.

### **How can I setup Hit-N-Run to launch/surface when I hit a hotkey from any application?**

Create a link to HitNRun.exe (or use an existing link) and edit the Properties to the link. Set the ShortCut Keys item on the second tab to any hotkey setting of your choice. Hit-N-Run will now automatically launch when you hit that key combination. If Hit-N-Run is already running, it will emerge to the surface of your display.

### **Why does Hit-N-Run respond more slowly when it initially starts up?**

Hit-N-Run needs to read you program groups and rerun items when it initially starts up in order to generate an icon cache. This allows it to generate popup menus and application lists very quickly. This process can take anywhere from 10 seconds to 2 minutes, depending on the number of program groups, reruns, and the speed of your computer.

### **How can I delete old rerun entries that I no longer need?**

Rerun items are stored as Windows 95 link files in the rerun directory located inside the directory where you installed Hit-N-Run. You can delete and rename rerun entries in this directory using Explorer. Hit-N-Run will launch Explorer for you in this directory if you invoke the **Edit/Reruns** context menu item from the main window.

### **How can I adjust my program groups?**

Your program groups are stored in a normal directory on your hard disk and are comprised of a hierarchy of subdirectories, documents, links, and applications. You can manipulate any of these directories using the Windows 95 Explorer. Hit-N-Run will launch Explorer for you in this directory if you invoke the **Edit/Groups** context menu item from the main window.

### **How can I get rid of those irritating messages that ask me to buy a registered version?**

[Register](#) your copy of Hit-N-Run.

