

Web Expander - Table of Context

[Description](#)

[Install and Uninstall](#)

[Version information and registration](#)

[How to register Web Expander](#)

[mailto protocol configuration](#)

[Basic Configuration](#)

[mailto: from Microsoft Internet Explorer](#)

[Generic mail configuration](#)

- [Eudora configuration](#)
- [Pegasus Configuration](#)
- [Other mail program configuration](#)
- [Substitution option string](#)

[AL-Mail configuration](#)

[Protocol configuration](#)

- [CuteFTP configuration](#)
- [WS_FTP configuration](#)

[Protocol configuration - User defiend protocol](#)

- [Kind of protocol comparison](#)
- [Substitution option string](#)

[Protocol configuration - Multi protocol handler definition](#)

[Misc configuration](#)

[Web Expander Controller](#)

[More information](#)

BlackDog Factory Presents
Web Expander 2.15
Protocol Enhancement Utility

Copyright © 1996 Tetsuya Kakura

Web Expander 2.15 is protocol enhancement utility for Netscape Navigator. It launches external mail, ftp and other program from click 'mailto:', 'ftp:' and any other protocols. It can handle user defined protocols (i.e. 'notepad:', 'webexp:' and you wish one) to provide intranet solution.

- If you wish to use Pegasus from 'mailto:', you can use it with both Netscape Navigator, Microsoft Internet Explorer and Microsoft NetMeeting.
- If you wish to use CuteFTP from 'ftp:', you can use it with Netscape Navigator.
- If you wish to define new protocols, like 'notepad:', 'webexp:' and more..., You can do it.

Web Expander launches your favorite mail program, when you click mailto: from Microsoft Internet Explorer.

Web Expander 2.15 is shareware. NOT FREeware.

Home Page

<http://www.st.rim.or.jp/~tezz-k/index.html>

E-Mail Address

tezz-k@yo.rim.or.jp

[How to register Web Expander](#)

More Information and How to contact.

Home Page

<http://www.st.rim.or.jp/~tezz-k/index.html>

E-Mail Address

tezz-k@yo.rim.or.jp

Install and Uninstall

Install

1. Extract distributed file to any directory.
2. Create directory and store webexp.exe
i.e.
c:\webexp\webexp.exe
3. Store both wexpicon.exe and webexp.hlp to webexp directory.
4. If you use Windows 95. Create Shortcut for Web Expander Controller(wexpicon.exe) into startup submenu of start menu. If you use Windows NT 3.51. Create program icon for Web Expander Controller into startup group of Program Manager.
5. Configure protocols and mail programs.
[mailto protocol configuration](#)
[Protocol configuration](#)
Configuration samples in <http://www.st.rim.or.jp/~tezz-k/>

Uninstall

1. Launch Unreg.exe. It is included in Web Expander archive file.
2. Remove all distributed files and Web Expander directory.
3. Restart your PC.

Version Information and registration

The about tab is version and registration information page. If you wish to register your Name and Key Code, Please click registration button in following image to view registration instruction.



Registration Instruction

1. Payment

You can pay shareware fee by one of following methods of payment.

Bank Transfer

Bank Name	Sanwa Bank
Branch Name	Senba Branch
Bank Address	2-2-9 MinamiKyuhoji-Chou Chuoku Osaka City Osaka Pref. JAPAN
Payee's Name	Tetsuya Kakura
Account #	3718059
Fee	\$10.00(USD) or 1000YEN(Japanese)

And you have to pay bank transfer charge and receiving charge.
Receiving charge is 1500Yen or \$14.00(USD) that is charged in Japanese bank when deposited in my bank account.

CompuServe Shareware Registration

CompuServe command GO SWREG and follow the menus

Program Title	WEB EXPANDER 2.0
Registration ID	11943
Fee	\$10.00 (USD)

Send cash by Postal Mail

Address	6-17-18-404 OnoharaHigashi, Minoh-City Osaka Pref. JAPAN Postal # 562
Name	Tetsuya Kakura
Fee	\$10(USD) or 1000YEN(Japanese)

NEVER SEND CHECK.

I can't accept check. Why I can't accept it ? Because check cashing fee is too expensive. It is 2610YEN (nearly \$24).

2. Order

If you paid, you may fill out following order from and send tezz-k@yo.rim.or.jp by e-mail.

Order From

--- cut here --- cut here --- cut here ---

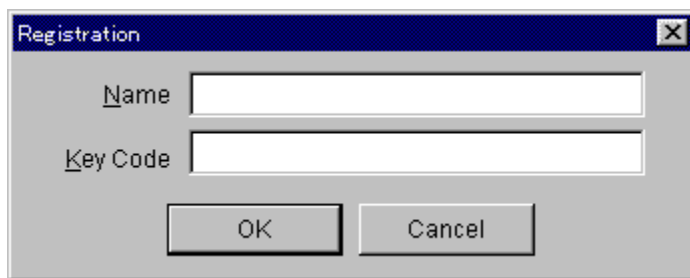
Web Expander Single Copy	copies at \$10.00 each =
Web Expander Single Copy	copies at 1000Yen each =
*Receiving charge per payment	\$14=
*Receiving charge per payment	1500YEN=
Total payment	
* additional charge only Bank Transfer	

Date:
Name:
Company:
Address:
City, State, Zip:
Country:
Phone:
Fax:
Electronic Mail address:
How did you hear about Web Expander ?:
Comments:

--- cut here --- cut here --- cut here ---

3. Registration

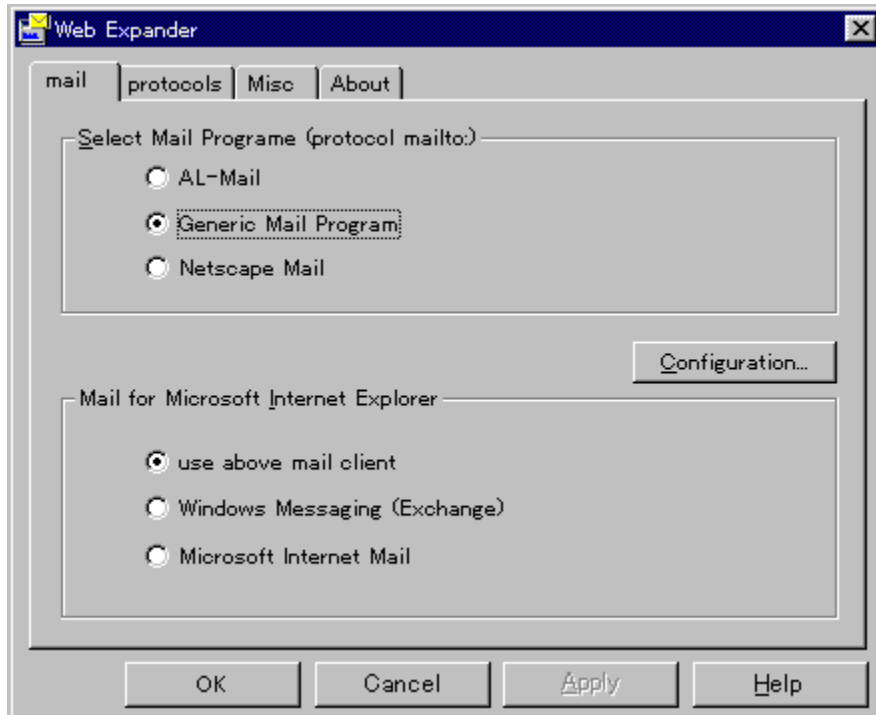
When I received the your order form and confirmed the your payment, I send registration Key Code to you, soon. You may fill out Registration Dialog. (following Fig.) You can open the dialog from Web Expander About tab.



The image shows a standard Windows-style dialog box titled "Registration". It has a dark blue title bar with a close button (X) on the right. The main area is light gray and contains two text input fields. The first field is labeled "Name" and the second is labeled "Key Code". Below the input fields are two buttons: "OK" and "Cancel".

mailto protocol configuration

The mail tab is mailto: protocol configuration page. If you wish to use your favorite mail program, i.e. Pegasus, Eudora., from Netscape Navigator, Microsoft Internet Explorer and Microsoft NetMeeting. Click Configuration button on following image, you can show some mail program configurations.



Basic Configuration

If your mail program is Pegasus, Eudora and other one, you may select 'Generic Mail Program' radio button and click Configuration button.

Generic Mail Configuration(Pegasus, Eudora and Other mail program)

If your mail is AL-Mail, you may select AL-Mail radio button and click Configuration button. The AL-Mail is one the most famous mail program in Japan.

AL-Mail Configuration

If you wish to use Netscape Mail, you may select 'Netscape Mail' radio button.

Netscape Mail

mailto: from Microsoft Internet Explorer (MSIE) and Microsoft NetMeeting.

If you select 'use above mail client' in Mail for Microsoft Internet Explorer group, when you click mailto: from Microsoft Internet Explorer, Web Expander launches mail program that was set in 'Select Mail Program (protocol mailto:)' group.

If you select Windows Messaging (Exchange), when you click mailto: from MSIE, Web Expander launches Windows Messaging mail program.usually launches Microsoft Exchange.

If you select Microsoft Internet Mail, when you click mailto: from MSIE, Web Expander launches Microsoft Internet Mail.

limitation of Web Expander and Microsoft Internet Explorer.

At the moment, if you ignore handling of mailto by Web Expander Controller, when you click mailto: from

MSIE, first Web Expander tries to launch Microsoft Internet Mail, if Microsoft Internet Mail doesn't work, Web Expander tries to launch Windows Messaging program. (Microsoft Exchange in ordinary). Microsoft Internet Explorer doesn't support mailto: action with FORM tag of HTML. So Web Expander can't send FORM message from MSIE, too. Please refer to <http://www.microsoft.com/kb/peropsys/win95/q154864.htm> for detail of the problem.

mail configuration

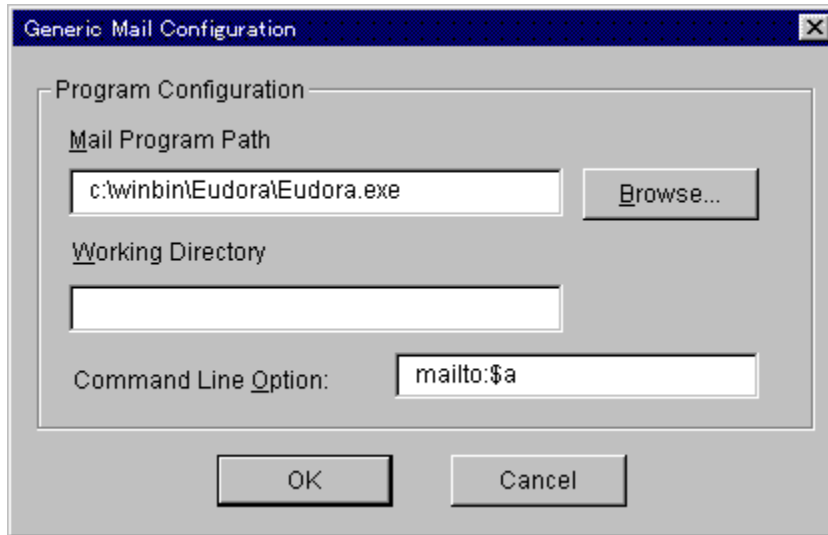
[AL-Mail Configuration](#)

[Generic Mail Configuration\(Pegasus, Eudora and Other mail program\)](#)

[Netscape Mail](#)

Configuration samples <http://www.st.rim.or.jp/~tezz-k/>

mailto protocol configuration - Generic mail



Eudora

1. Launch Web Expander (webexp.exe). and select Generic Mail Program. Click
2. Configuration button. Then appear Generic Mail Configuration dialog.
3. Fill in Mail Program path field with full path of Eudora32.exe(Eudora).
4. Fill in Command Line Option field with 'mailto:\$a'. ('\$a' will be replaced with an address in 'mailto:address'.)
5. Click OK button twice to close all dialogs.

Pegasus

1. Launch Web Expander (webexp.exe). and select Generic Mail Program. Click
2. Configuration button. Then appear Generic Mail Configuration dialog.
3. Fill in Mail Program path field with full path of Winpm-32.exe(Pegasus Win32), Winpmail.exe(Pegasus Win16) .
4. Fill in Command Line Option field with '-T \$a'. If you installed NetWare modules on your Windows 95, you must add -A option into the field.
5. Click OK button twice to close all dialogs.

If your Pegasus is before version 2.41, you never add option '-T \$a' into Command Line Option field of Web Expander dialog. That option has difference mean between before 2.41 and after 2.41.

Other mail program

1. Launch Web Expander (webexp.exe). and select Generic Mail Program. Click
2. Configuration button. Then appear Generic Mail Configuration dialog.
3. Fill in Mail Program path field with full path of your favorite mail program. (Click browse button, you wish to use file dialog to browse file)
4. Fill in Working Directory field with working directory. (This is optional setting)
5. Click OK button twice to close all dialogs.

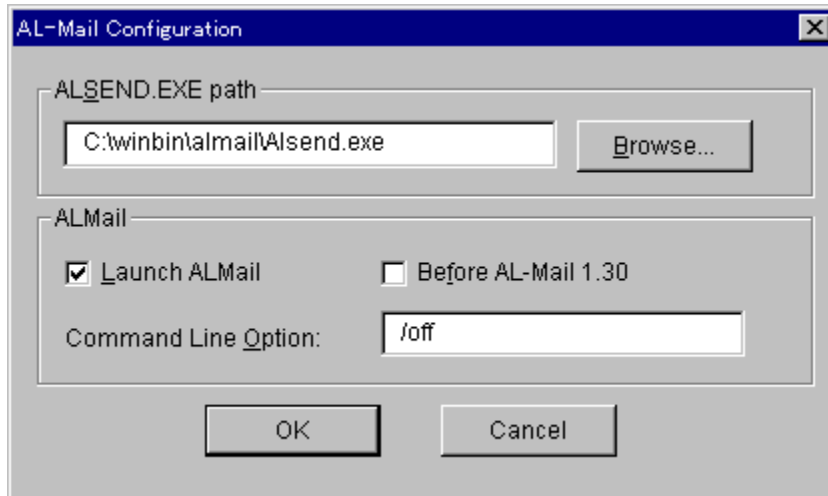
Configuration samples <http://www.st.rim.or.jp/~tezz-k>

about substitution string for option field.

You can use following some keywords to substitute option string.

\$a	replace with an address in mailto:address.
\$u	replace with whole URL.
\$(subject)	relpace with each subject or references string, when
\$(reference)	reply message form Netscape Mail Window.
\$\$	replace with single '\$'.

Mailto protocol configuration - AL-Mail

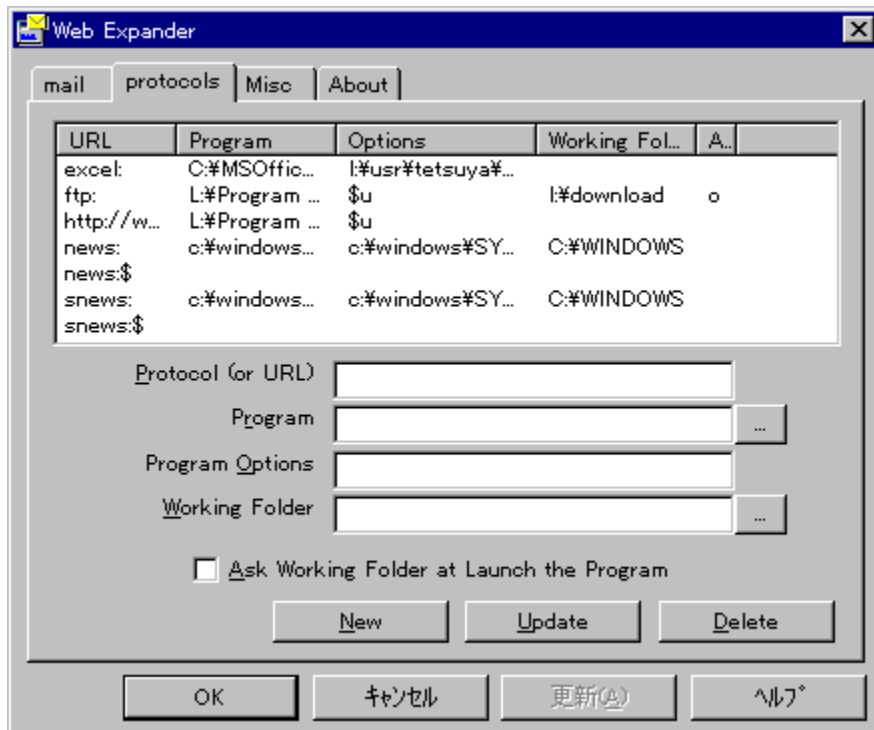


1. Launch Web Expander (webexp.exe). And select AL-Mail.
2. Click Configuration. Then appear AL-Mail Configuration dialog.
3. Fill in ALSEND.EXE path field with full path of ALSEND.exe. (Click browse button, you wish to use file dialog to browse file)
4. Click OK button twice to close all dialogs.

Netscape mail

If you select Netscape mail, Web Expander doesn't work from click 'mailto:' and Netscape mail will launch.

Protocol configuration



ftp: - CuteFTP

1. Launch Web Expander(webexp.exe) and select protocols tab.
2. Fill in Protocol field with 'ftp:'.
3. Fill in Program field with full path of 'CuteFTP32.exe'.
4. Fill in Program Options field with following options for CuteFTP:
`anonym $u`
5. Fill in Working Folder field with download file directory name.
6. Click Update button to register protocol and protocol handling application. **If don't click Update button, specified protocol and protocol handling application is not registered.**
7. Click OK button to close Web Expander dialog.

ftp: - WS_FTP

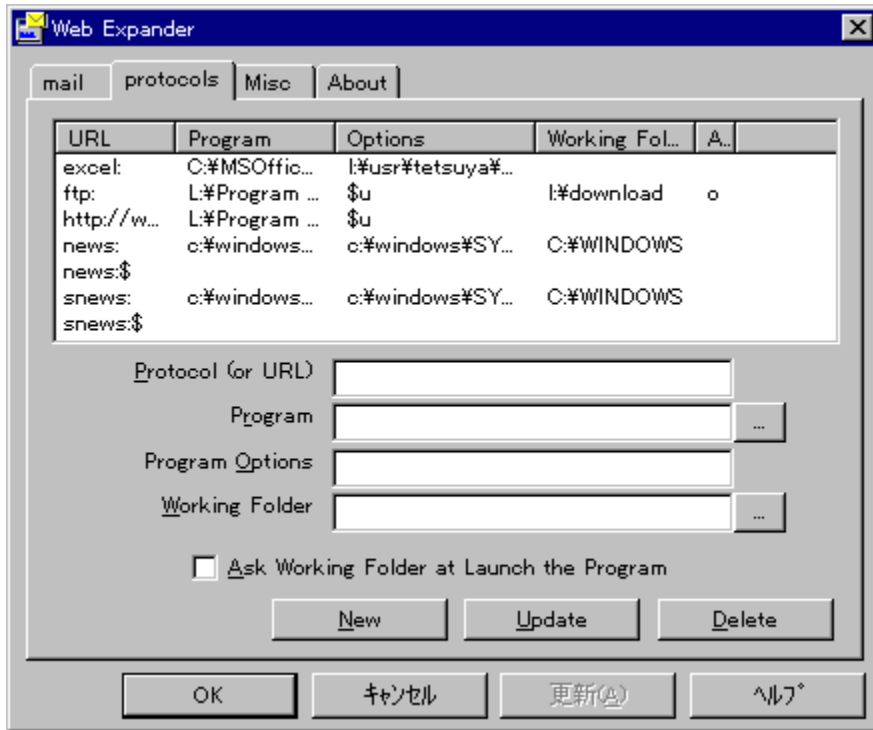
1. Launch Web Expander (webexp.exe) and select protocols tab.
2. Fill in Protocol field with 'ftp:'.
3. Fill in Program field with full path of 'WS_FTP95.exe' or 'WS_FTP32.exe'.
4. Fill in Program Options field with following options for WS_FTP:
`-u anonymous $u`
`-u anonymous@$h ftp://<your proxy name>$p (when your PC in firewall)`
5. Fill in Working Folder field with download file directory name.
6. Click Update button to register protocol and protocol handling application. **If don't click Update button, specified protocol and protocol handling application is not registered.**
7. Click OK button to close Web Expander dialog.

About substitution string for option field section

User defined protocol

Configuration samples <http://www.st.rim.or.jp/~tezz-k/>

Protocol configuration - User defined protocol



How to define new protocol.

1. Launch Web Expander(webexp.exe) and select protocols tab.
2. Fill in Protocol field with new protocol name. Refer to [Kind of protocol comparison](#).
3. Fill in Program field with program path.
4. Fill in Program Options field with program options. Refer to [about substitution string for option field section](#).
5. Fill in Working Folder field with runtime directory.
6. Click Update button to register protocol and protocol handling application. If don't click Update button, specified protocol and protocol handling application is not registered.
7. Click OK button to close Web Expander dialog.

Example Click 'notepad:' protocol and launch notepad.

Fill out protocols tab with following setting strings. In this setting, If you click 'notepad:c:\readme.txt' on HTML, Web Expander will launch notepad and open c:\readme.txt.

Protocol	notepad:
Program	c:\windows\notepad.exe
Program Options	\$0
Working Folder	blank

Kind of protocol comparison.

Web Expander usually use partial comparison between protocol setting and clicked protocol.(Refer to [Multi Protocol Handler Definition](#)). If you wish complete comparison, add

special character '\$' to last of protocol.

For example. If you entered `http://www.st.rim.or.jp/~tezz-k\$` into protocol field. When you click <http://www.st.rim.or.jp/~tezz-k> on Netscape Navigator, above setting is applied. When you click <http://www.st.rim.or.jp/~tezz-k/webexp> on Netscape Navigator, above setting is not applied.

about substitution string for option field.

You can use following some keywords to substitute option string.

*Sample is replacement example when given URL is `ftp://ftp.aaa.com/pub?bbb+ccc+ddd`

\$u	replace with whole URL. Sample ftp://ftp.aaa.com/pub?bbb+ccc+ddd
\$h	replace with host name. Sample ftp.aaa.com
\$p	replace with path. Sample /pub
\$0	replace with path include host name. Sample //ftp.aaa.com/pub
\$1 - \$9	replace with CGI arguments. Samples \$1 -> bbb, \$2 -> ccc \$3 -> ddd
\$\$	replace with single '\$'. Sample \$

*Sample is replacement example when given URL is `ftp://anonymous@ftp.aaa.com/pub`

\$(username)	replace with user name. left side of @. Sample anonymous
\$(hostname)	replace with host name. right side of @. Sample ftp.aaa.com
\$u	replace with full host name. Sample anonymous@ftp.aaa.com

*Sample is replacement example when given URL is `ftp://ftp.aaa.com/pub/file.zip`

\$(directory)	replace with directory part of download file path. Sample /pub/
\$(filename)	replace with filename part of download file path Sample file.zip
\$p	replace with download file path. Sample /pub/file.zip

Protocol configuration - Multi Protocol Handler Definitions

You can define multi handler to one protocol.

When you click **<protocol name>**: in HTML, Web Expander automatically choose nearly one form some protocol handling set and execute it.

Example. Change FTP options by login site.

	Protocol	program	options
A	ftp:	ws_ftp95.exe	-u anonymous \$u
B	ftp://ftp.abc.com	ws_ftp95.exe	-u your-username -w your-password \$p
C	ftp://anonymous@	ws_ftp95.exe	-u anonymous ftp://\$(hostname)\$p

When you click ftp://ftp.abc.com/usrs/your-home-direcotry in HTML, Web Expander chooses setting B. Web Expander launches WS_FTP and login the site by your-username.

When you click ftp://anonymous@ftp.efg.ac.jp/pub in HTML. Web Expander chooses setting C. Web Expander launches WS_FTP and login the site by anonymous.

When you click other ftp: protocol in HTML. Web Expander chooses setting A. Web Expander launches WS_FTP and login the site by anonymous.

Example. Browse some Web Site by Internet Explorer.

	Protocol	program	options
A	http://www.microsoft	C:\Program Files\PLUS!\Microsoft Internet\Iexplore.exe	\$u

When you click http://www.microsoft.com or http://www.microsoft.co.jp. Web Expander launches Internet Explorer. When you click other site, you can browse the site by Netscape Navigator.

Misc configuration

Some miscellaneous configuration are gathered in Misc. tab of Web Expander.



Never show error message about Netscape Navigator.

You may mark this check box, when Netscape Navigator is not installed in your PC and sometime Web Expander will show dialog '**Unable to create Netscape.Registry.1**'.

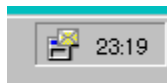
Web Expander need Netscape Navigator but if you wish to run Web Expander with Microsoft Internet Explorer and without Netscape Navigator. In this case sometime Web Expander shows error message about Netscape Navigator. When the check box is marked, the error message will disappear.

Web Expander Controller

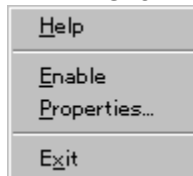
You can disable effect of Web Expander and change configuration by using Web Expander Controller(wexpicon.exe).

Windows 95

When you use Windows 95, Web Expander Controller stays in tray on taskbar.



- Click right button on Web Expander Controller icon, then show the menu



- When you select Disable menu, then disable Web Expander protocol handling. When you select Enable menu, then enable Web Expander protocol handling. You can change disable or enable protocol handling by clicking Web Expander Controller Icon on tray, too.
- When you select Properties menu, then execute Web Expander.
- When you select Exit menu, then release Web Expander Controller from tray

Windows NT 3.51

When you use Windows NT 3.51, Web Expander Controller is running as dialog application.



- When you select Disable, then disable Web Expander protocol handling. When you select Enable, then enable Web Expander protocol handling.
- When you select Properties button, then execute Web Expander.
- When you select Exit button, then terminate Web Expander Controller

