

QVT/Net lpr Help

Setting up lpr

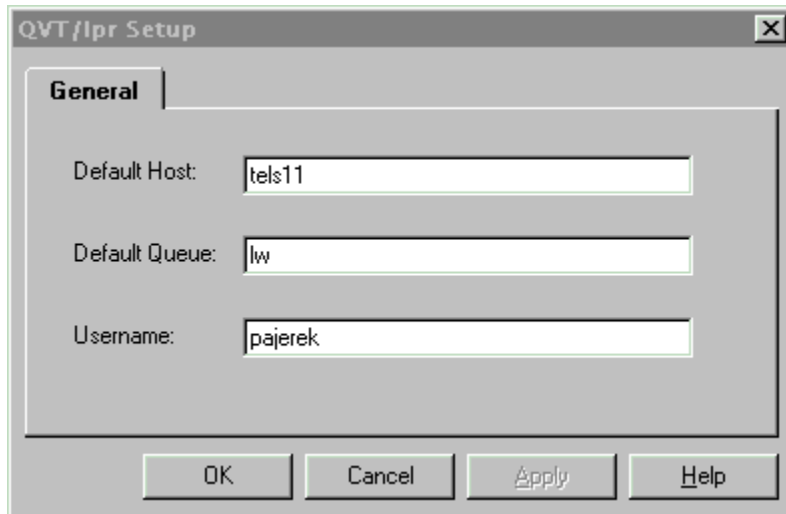
Printing files with lpr

Additional Commands

Setting up QVT/lpr

QVT/lpr requires minimal setup. Only three items are required:

- The name or address of the printer server
- The name of the default print queue
- The username under which you will submit print jobs



The image shows a screenshot of a dialog box titled "QVT/lpr Setup". The dialog has a "General" tab selected. Inside the dialog, there are three text input fields:

- "Default Host:" with the value "tels11"
- "Default Queue:" with the value "lw"
- "Username:" with the value "pajerek"

At the bottom of the dialog, there are four buttons: "OK", "Cancel", "Apply", and "Help".

Some setup on the server side may also be necessary. Some lpr servers use the file `/etc/hosts.lpd` to limit access to the lpr daemon; only hosts that are listed in `hosts.lpd` will be allowed to submit print jobs. If your site is like this, it will be necessary for your system administrator to add your PC's host name to `hosts.lpd`.

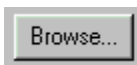
Printing Files with QVT/lpr

When you start a configured QVT/lpr, the fields 'Host', 'Queue', and 'Username' should already be filled in. All you need to do, then, to print a file is fill in the 'Filename' field. There are two ways to do this:

- Type in the filename from the keyboard

A screenshot of a graphical user interface element. It consists of a label 'Filename:' followed by a rectangular text input field with a thin border and a light gray background.

- Click on the 'Files>>' button, and use the Windows file browser to select a file

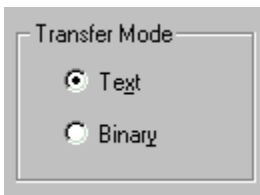


If you use the second method, you will be able to select multiple files to be printed, rather than just one.

Finally, QVT/lpr supports the Windows 'drag-and-drop' protocol, so you can bring filenames over from the Windows shell.

Options

There are a few print options that you may need to take into account. The first is the Transfer Mode, which is set by a pair of radio buttons. The two possibilities are Text and Binary, and the default is Text. You will not often need Binary mode, except for cases when you are printing fully-formatted files, such as plotter files.

A screenshot of a graphical user interface element. It is a rectangular box with a light gray background and a thin border. At the top left, the text 'Transfer Mode' is displayed. Below this text are two radio button options: 'Text' and 'Binary'. The 'Text' option has a small black circle next to it, indicating it is selected. The 'Binary' option has a small white circle next to it, indicating it is not selected.

The three checkboxes behave as follows:

Print Clipboard

You can print the (text) contents of the Windows Clipboard by selecting this checkbox. A filename is neither needed, nor is the 'Filename' input field enabled.

Delete After

Indicates that you want the source file deleted after it is successfully printed.

Print Banner

Indicates that you want a banner page printed as the first page in your print job.

Additional Commands

QVT/lpr provides some useful commands for managing the print queue.

Print Queue Status - lpq

Next to the 'Queue' field is a button labelled 'Status'. Pressing this button will give you a display of the print queue status.



A screenshot of a web interface showing a text input field labeled 'Queue:' containing the text 'lw'. To the right of the input field is a button labeled 'Status'.

Remove Print Jobs - lprm

Next to the 'Username' field is a button labelled 'Remove Jobs'. Pressing this button will remove from the print queue any jobs which belong to the specified username.



A screenshot of a web interface showing a text input field labeled 'Username:' containing the text 'pajerek'. To the right of the input field is a button labeled 'Remove Jobs'.

