



Getting Connected using Windows NT

The topics in this help file will help you set up your Windows NT computer to get connected to EarthLink.

[Installing Windows NT 4.0 Dial-Up Networking](#)

[Configuring Windows NT 4.0 Dial-Up Networking](#)

[Reinstalling Remote Access Services](#)

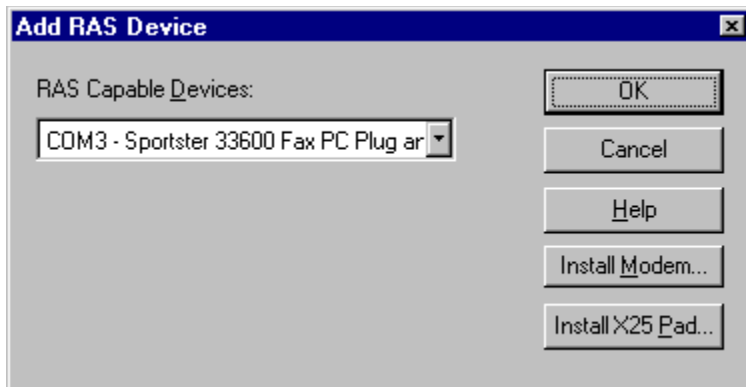
[Reinstalling TCP/IP](#)



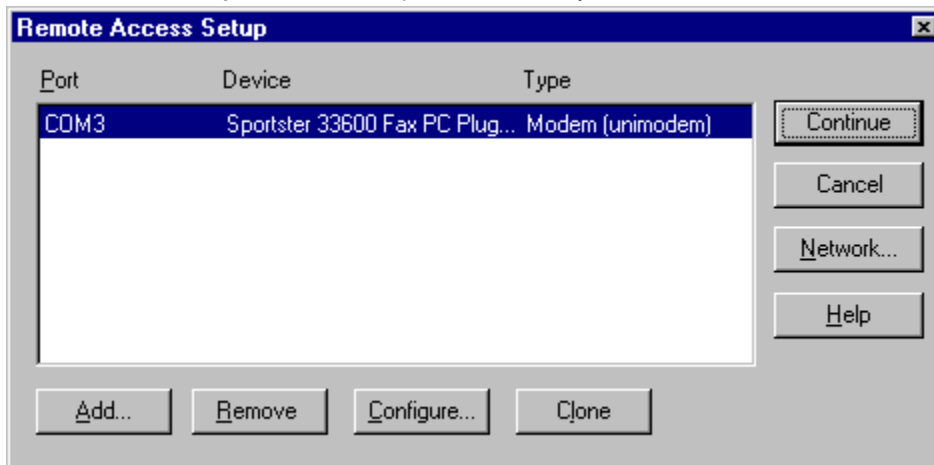
Installing Windows NT 4.0 Dial-Up Networking

To install Windows NT 4.0 dial-up networking (DUN):

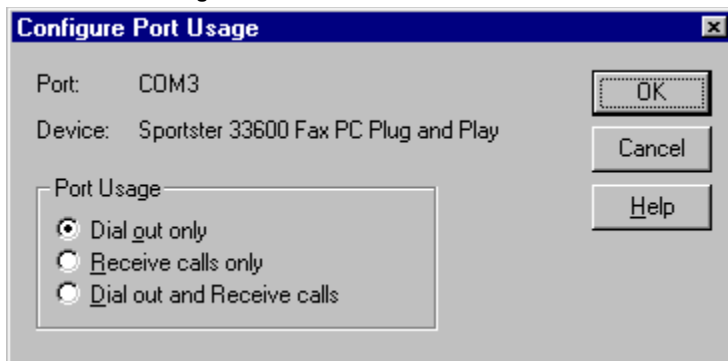
1. On your desktop, double-click **My Computer**.
2. Double-click **Dial-up Networking**.
If you receive a message stating **The phonebook is empty**, then click **OK** to add a new entry.
 - If the Dial-up Networking window opens with the phonebook list and the option to dial, skip to Configuring Windows NT 4.0 Dial-Up Networking. Otherwise, click **Install**. Point to the path where your NT4.0 install files are located (for example, D:\i386) and click **OK**. Windows NT will now install the necessary files onto the hard drive.
3. Verify the directory and click the **Continue** button.



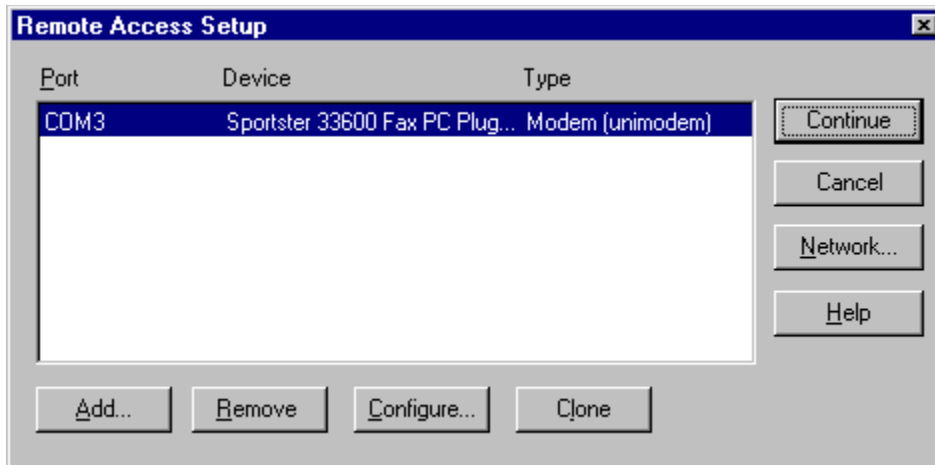
4. From the **RAS Capable Devices** drop-down list, select your modem then click **OK** button.



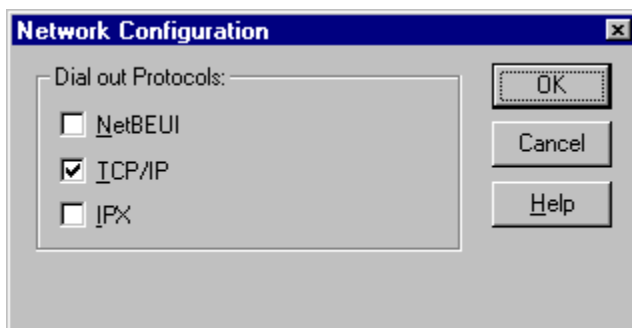
5. Click the **Configure** button.



6. Select **Dial out only**.
7. Click the **OK** button.



8. Click the **Network** button.

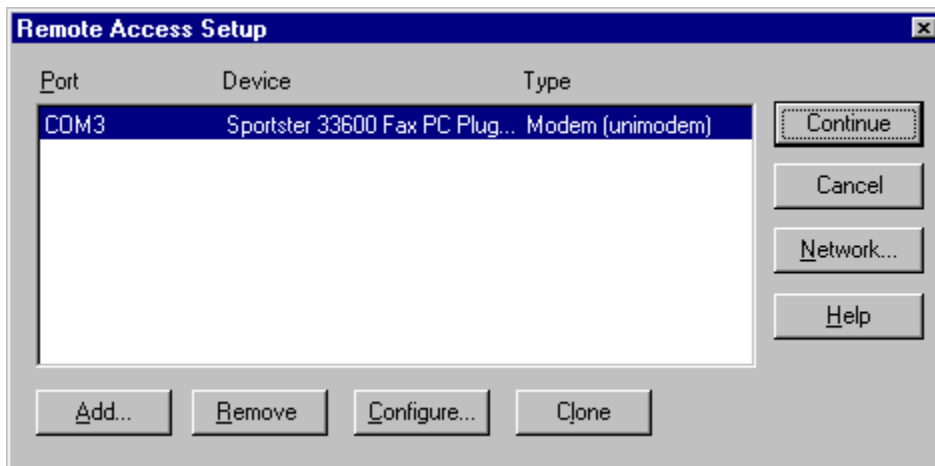


9. Uncheck **NetBEUI**.

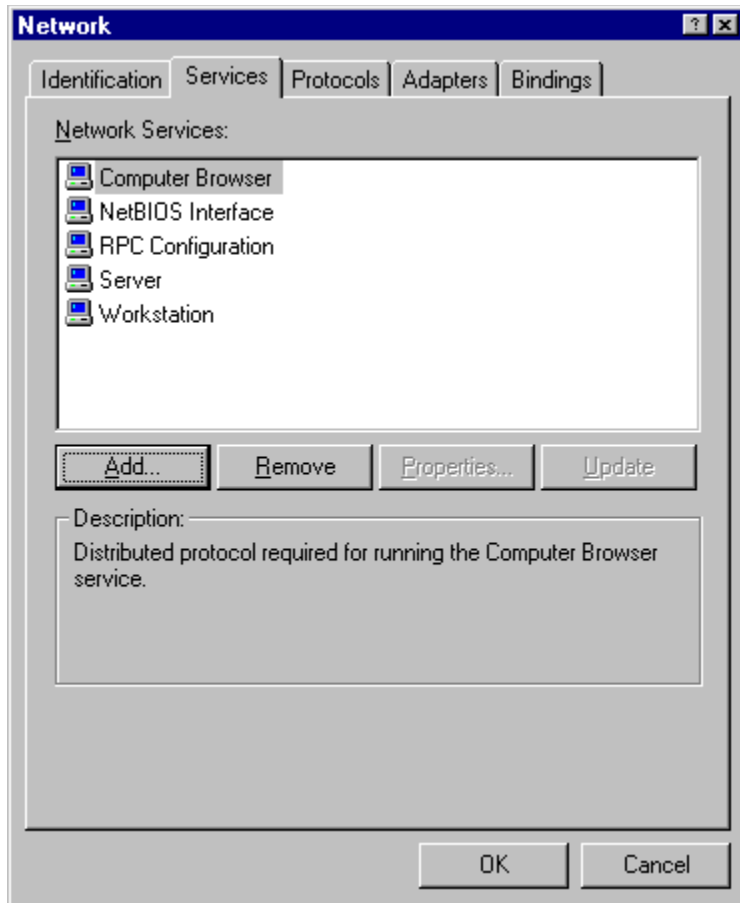
10. Check **TCP/IP**.

11. Uncheck **IPX**.

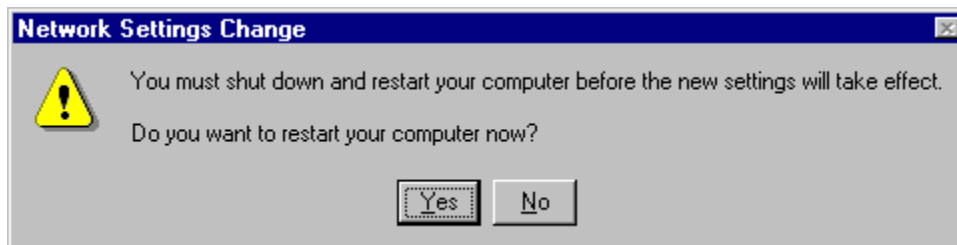
12. Click the **OK** button.



13. Click the **Continue** button.



14. Click the **Close** button.



15. Click the **Yes** button to restart your computer.

The **Add RAS Device** window will appear.

- ◆ If you see your modem listed in the **RAS Capable Devices** field, then click **OK** and proceed to the next step.
- ◆ If you do not see a modem listed, then you will need to install a driver for your modem



Configuring Windows NT 4.0 Dial-Up Networking

To configure Windows NT 4.0 dial-up networking, perform the following tasks to get your Windows NT 4.0 computer setup to connect to EarthLink:

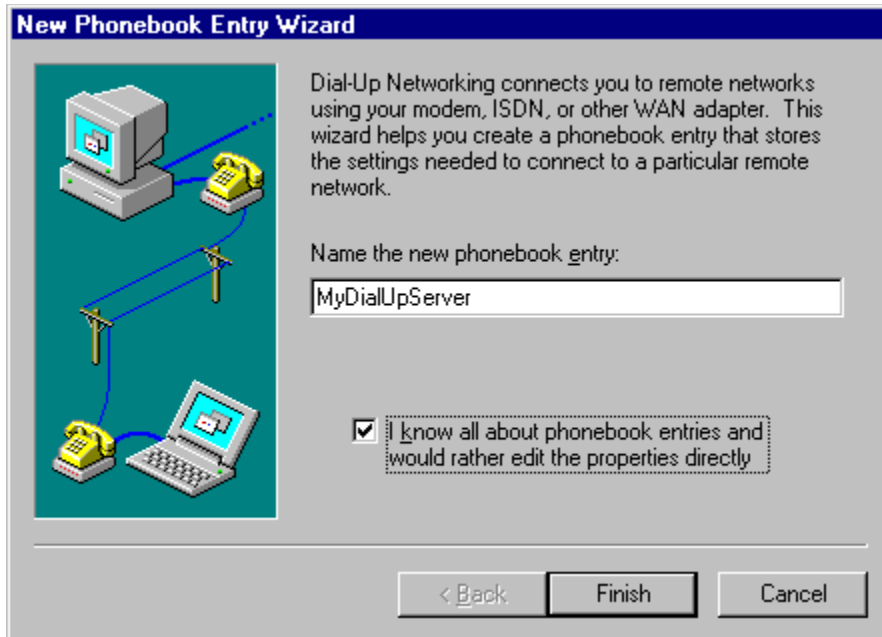
- [Add a Phonebook Entry for EarthLink](#)
- [Configure your Modem](#)
- [Configure your Dial-up Server](#)
- [Verify Script Settings](#)
- [Verify Security Settings](#)
- [Connect to EarthLink](#)



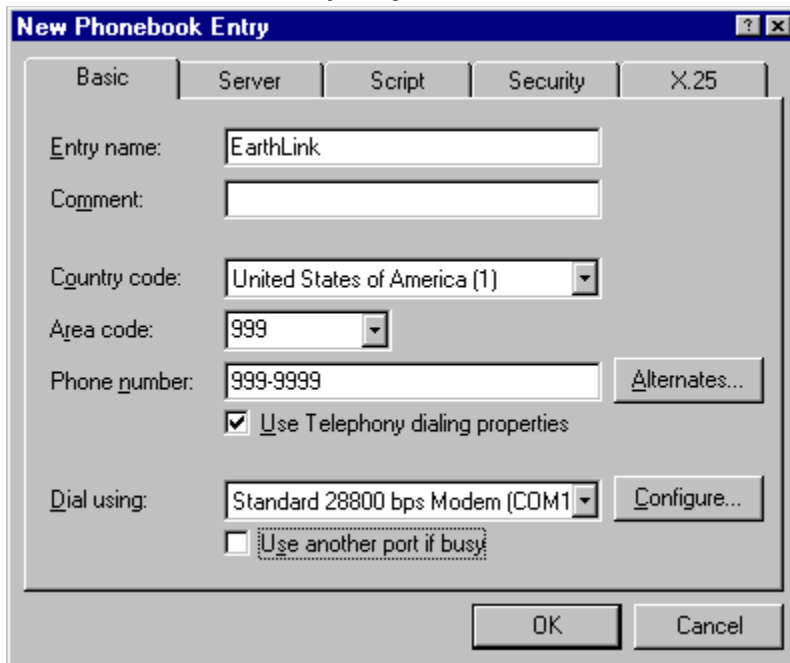
Adding a Phonebook Entry for EarthLink

To add a phonebook entry for EarthLink:

1. On your desktop, double-click **My Computer**.
2. Double-click Dial-up Networking.
 - If you are reinstalling Dial-Up Networking, and you see a list of existing phone book entries, click **New** to create a new entry.
 - By default, there are no entries in the phone book. If you see a message telling you that the phonebook is empty, click **OK** to open the **New Phonebook Entry Wizard** window.



3. Check the box labeled I know all about phonebook entries... and click Finish.
4. In the **New Phonebook Entry** dialog, select the **Basic** tab.



5. **Entry name**, enter EarthLink.
6. Enter the **country code** and **area code** of the number you are dialing, plus the **phone number** itself.
7. Check **Use Telephony dialing properties**.
8. Select your modem.

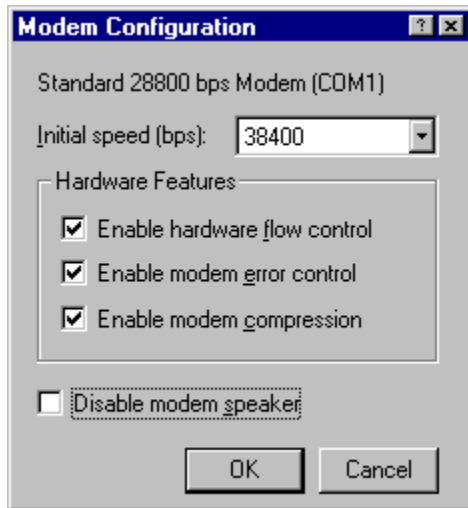
9. **Use another port if busy** should NOT be checked.



Configuring your Modem

To configure your modem:

1. Click the **Configure** button on the **New Phonebook Entry** dialog.



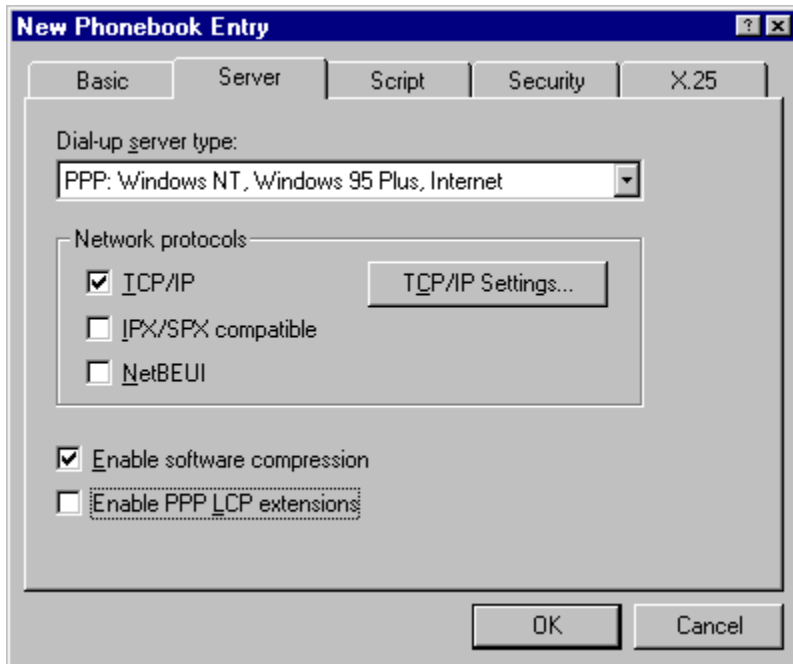
2. Set the **Initial speed (BPS)** to 19,200 if you have a 14.4k modem or 38,400 if you have a 28.8k modem.
3. Make sure all three **Hardware Features** boxes are checked (if applicable) and that **Disable modem speaker** is not checked.
4. Click the **OK** button to return to the **New Phonebook Entry** dialog.



Configuring your Dial-Up Server

To configure your dial-up server:

1. Select the Server tab on the **New Phonebook Entry** dialog.



2. The Dial-up server type should be PPP: Windows NT, Windows 95 Plus, Internet.
3. For Network Protocols only TCP/IP should be checked.
4. Make sure Enable software compression is checked, but Enable PPP LCP extensions is NOT checked.
5. Click the **TCP/IP settings** button.
6. Select **Server assigned IP address** and **Specify name server addresses**.
7. In the **Primary DNS** text box, type **207.217.126.81**
8. In the **Secondary DNS** text box, type **207.217.120.83**
9. Leave the **Primary WINS** and **Secondary WINS** servers at 0.0.0.0.
10. Check both **Use IP header compression** and **Use default gateway on remote network**.

PPP TCP/IP Settings [?] [X]

Server assigned IP address

Specify an IP address

IP address: 0 . 0 . 0 . 0

Server assigned name server addresses

Specify name server addresses

Primary DNS: 207 . 217 . 126 . 81

Secondary DNS: 207 . 217 . 120 . 83

Primary WINS: 0 . 0 . 0 . 0

Secondary WINS: 0 . 0 . 0 . 0

Use IP header compression

Use default gateway on remote network

OK Cancel

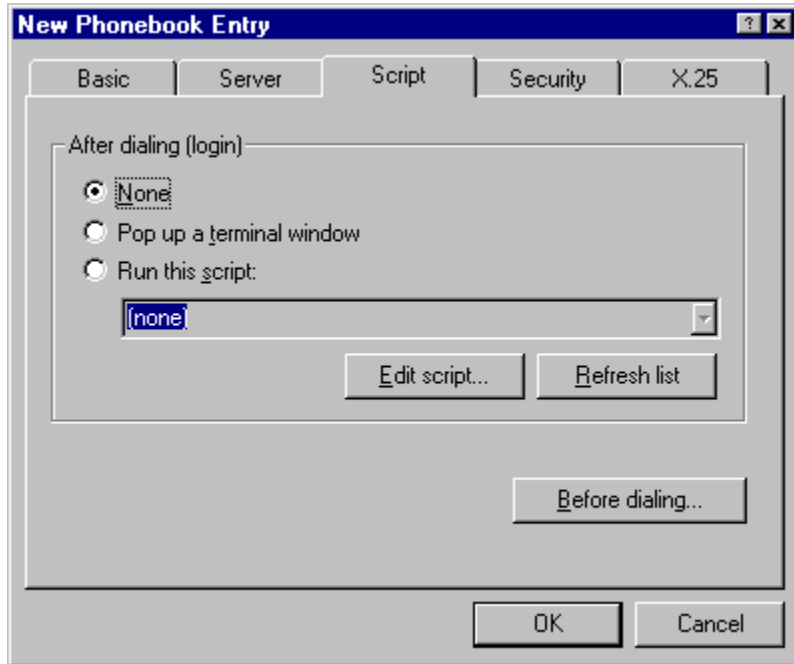
11. Click the **OK** button to return to the **New Phonebook Entry** dialog.



Verify Script Settings

To verify script settings:

1. Select the **Script** tab on the **New Phonebook Entry** dialog.



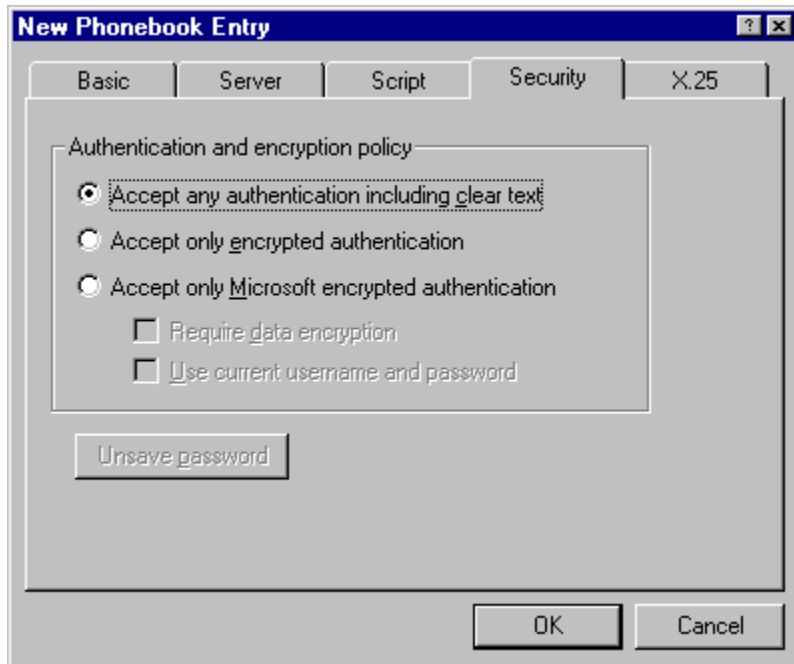
2. Make sure **None** is selected.



Verify Security Settings

To verify security settings:

1. Select the **Security** tab on the **New Phonebook Entry** dialog.

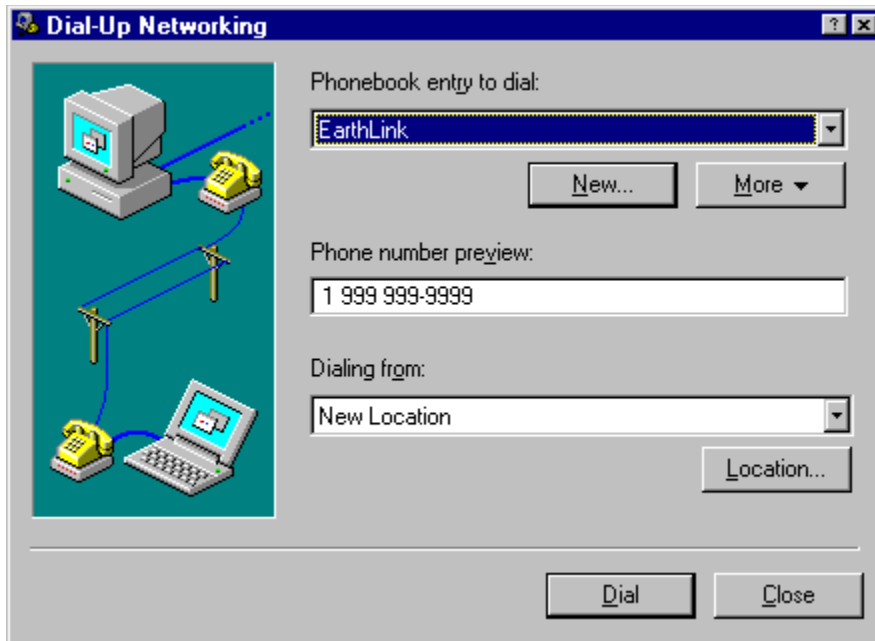


2. Select **Accept any authentication including clear text**.
3. Click **OK** to close the **New Phonebook Entry** dialog.



Connect to EarthLink

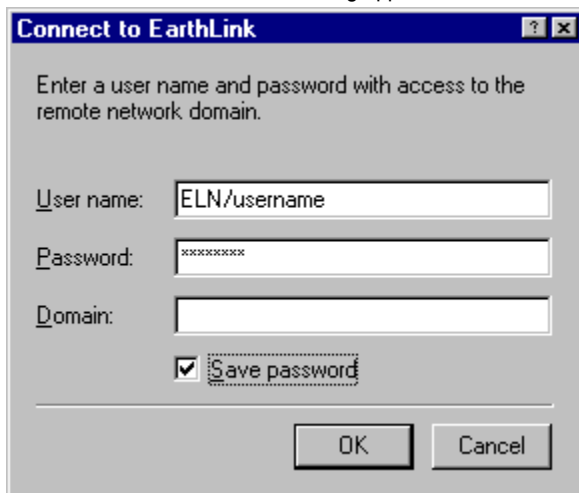
The Dial-up Networking dialog appears with the EarthLink entry you just created selected.



To connect to EarthLink:

1. Click the **Dial** button.

The Connect to EarthLink dialog appears.



2. Enter **ELN/** followed by your username in the User name field.
3. Enter your password.
4. Do not enter a **Domain** name.
5. If you are the only person using this computer, check **Save Password** so you won't have to retype your password each time you Connect to the Internet.
6. Click **OK** to dial EarthLink.

Once you are connected, a window will appear informing you that you have successfully connected to the Dial-up Server. Click **OK** to close this window.

You are now connected and may use any Internet software such as Internet Explorer (installed with Windows NT) to browse Web content.



Reinstalling Remote Access Services

[Removing RAS](#)

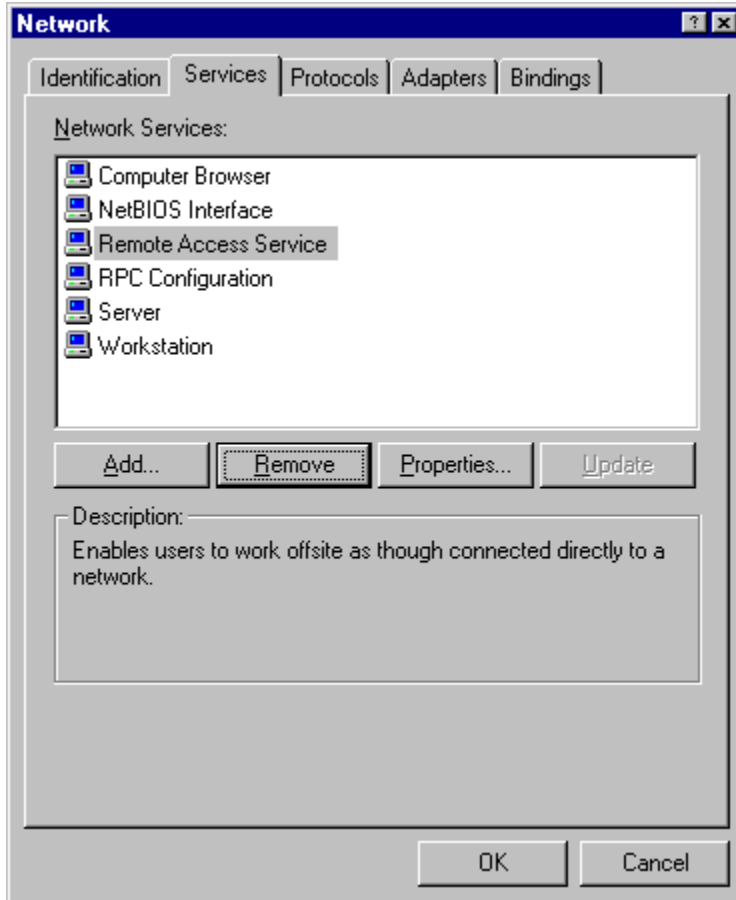
[Adding RAS](#)



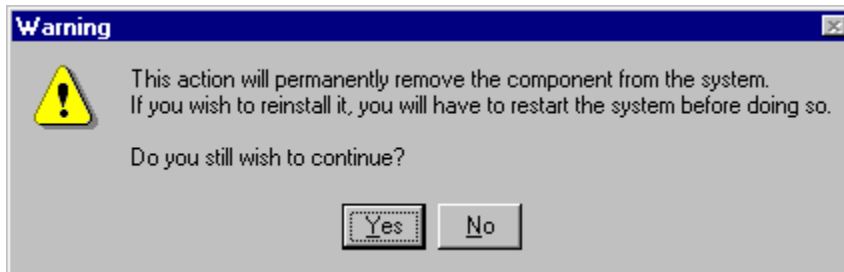
Removing RAS

To remove RAS:

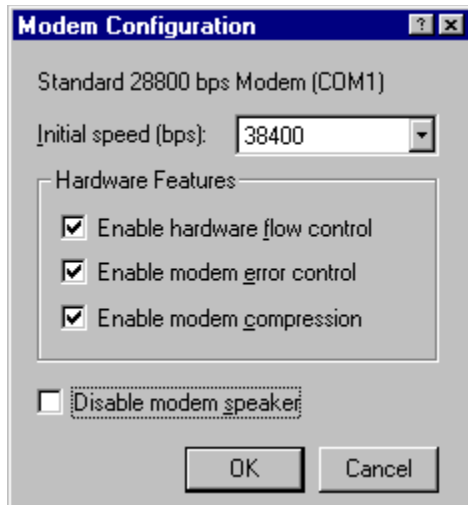
1. Click the **Start** button, point to **Settings**, and choose **Control Panel**.
2. Double-click the **Network** icon.
3. Select the **Services** tab.



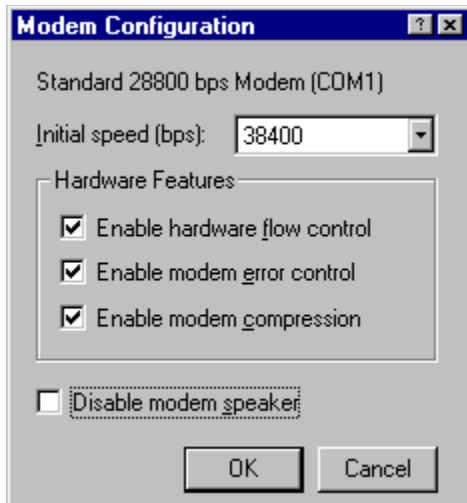
4. Select **Remote Access Service**.
5. Click the **Remove** button.



6. Click the **Yes** button. Remote Access Service is no longer listed on the Services tab.
7. Click the **Close** button.



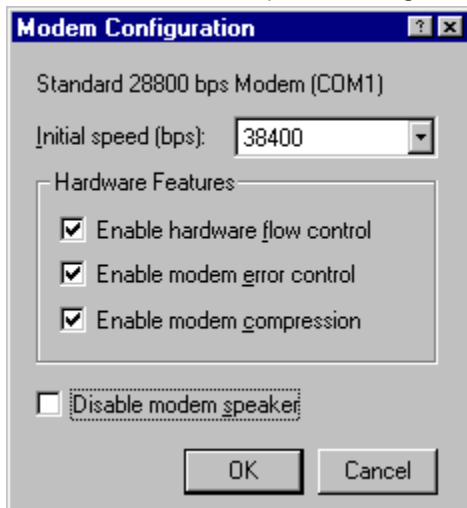
8. Click the **Yes** button to restart your computer.



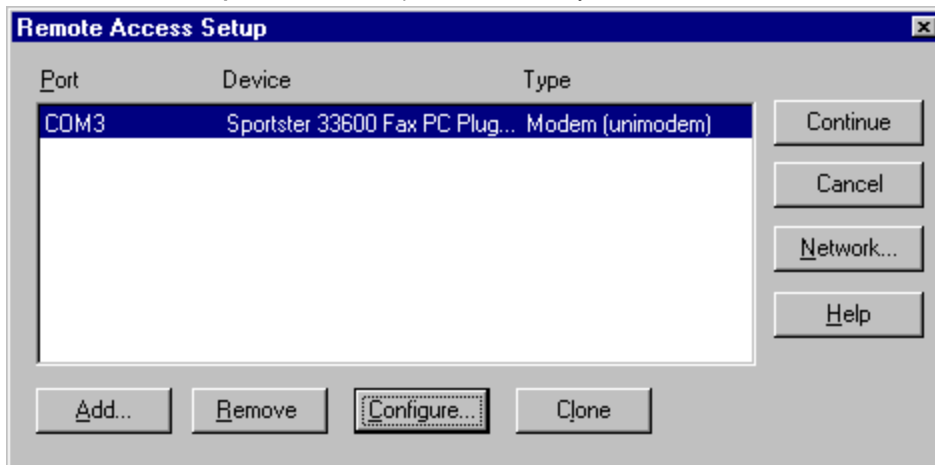
Adding RAS

To add RAS:

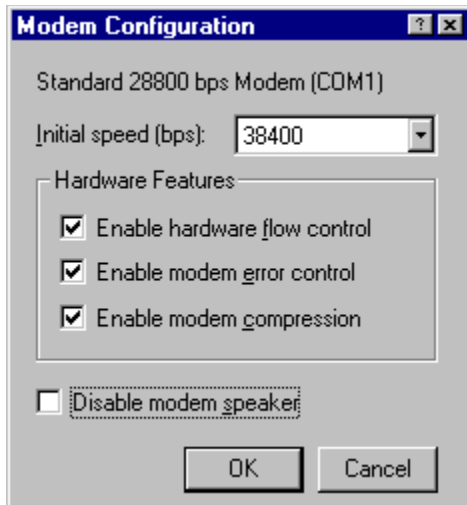
1. Click the **Start** button, point to **Settings**, and choose **Control Panel**.



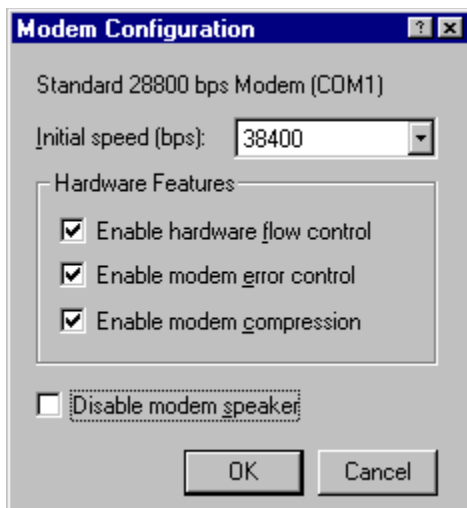
2. From the **RAS Capable Devices** drop-down list, select your modem then click the **OK** button.



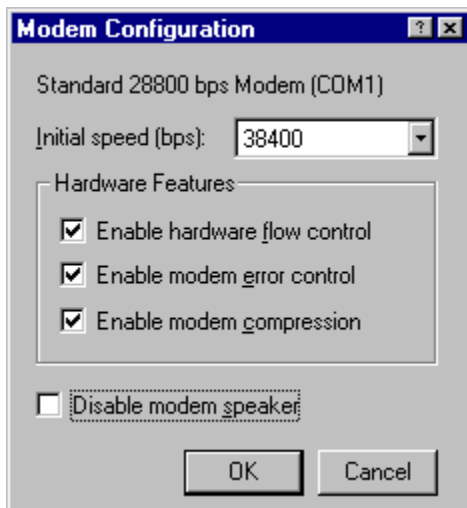
3. Click the **Configure** button.



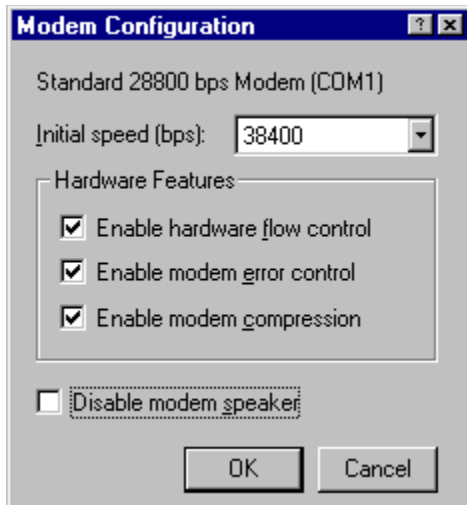
4. Select **Dial out only**.
5. Click the **OK** button.



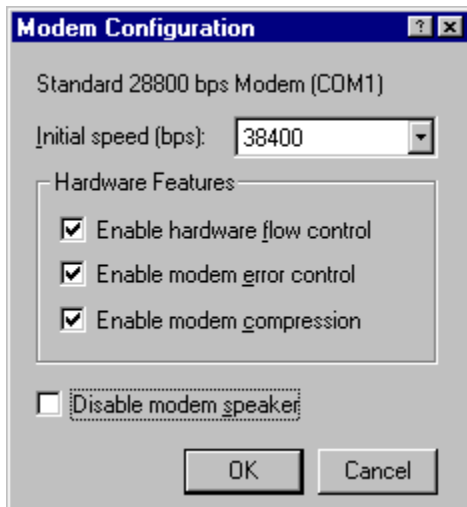
6. Click the **Network** button.



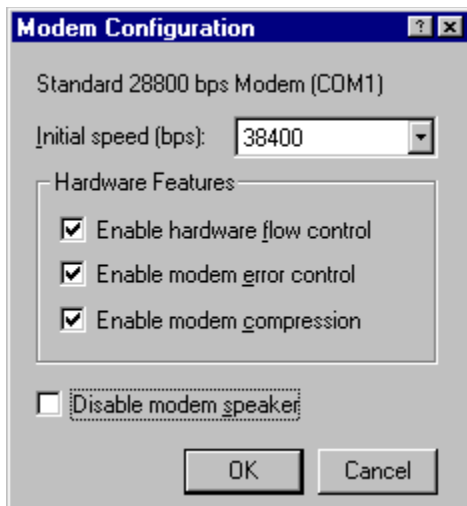
7. Uncheck **NetBEUI**.
8. Check **TCP/IP**.
9. Uncheck **IPX**.
10. Click the **OK** button.



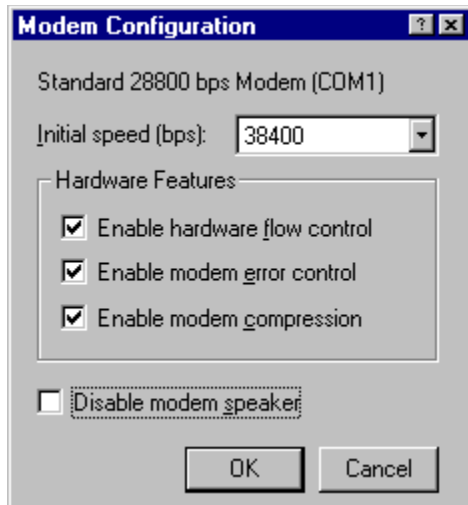
11. Click the **Continue** button.



12. Click the **Close** button.



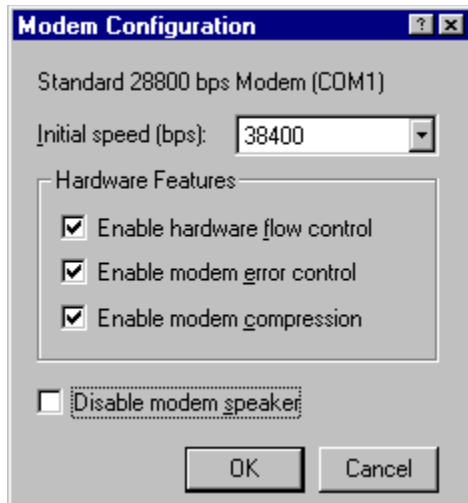
13. Click the **Yes** button to restart your computer.



Reinstalling TCP/IP

[Removing TCP/IP](#)

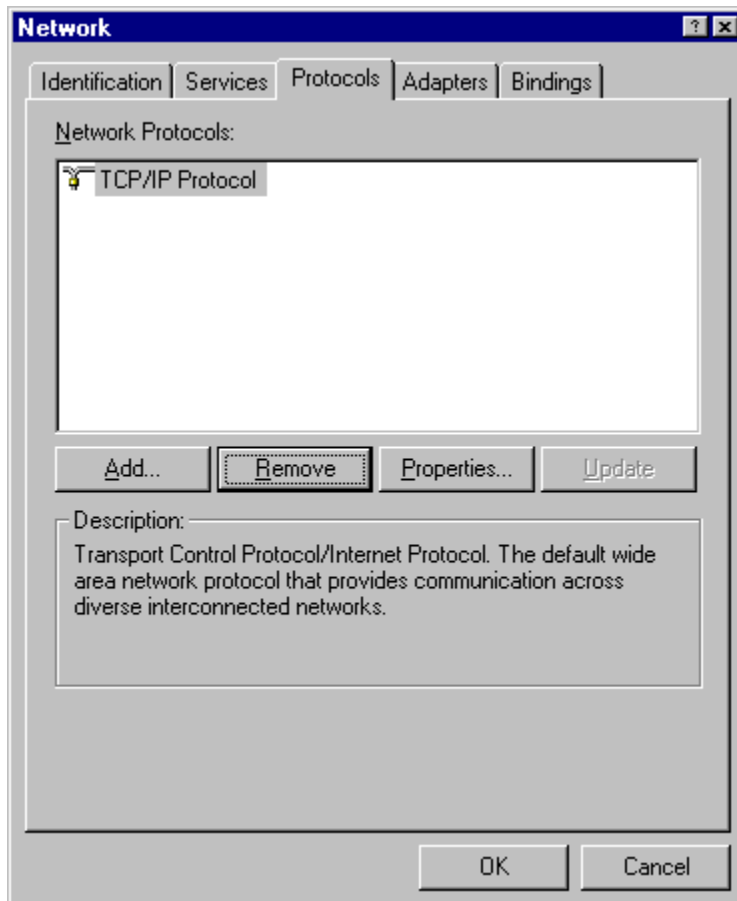
[Adding TCP/IP](#)



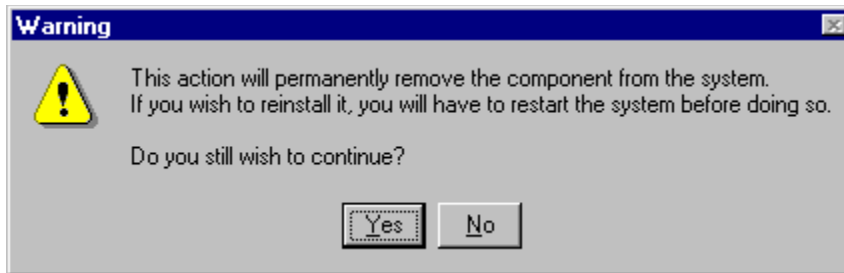
Removing TCP/IP

To remove TCP/IP:

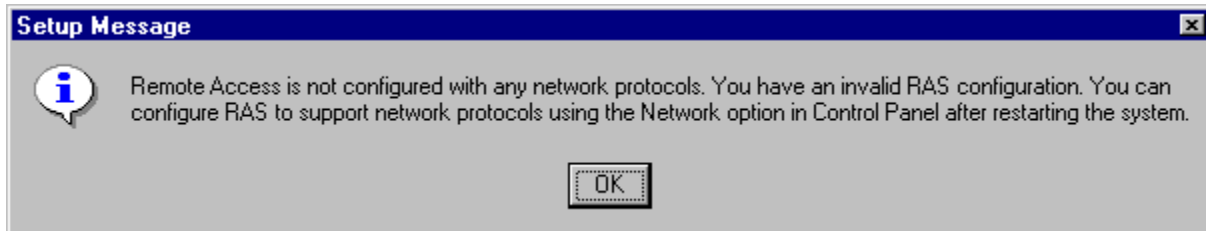
1. Click the **Start** button, point to **Settings**, and choose **Control Panel**.
2. Double-click the **Network** icon.
3. Select the **Protocols** tab.



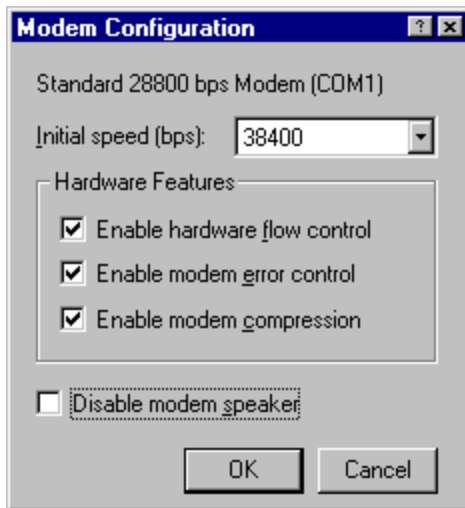
4. Select **TCP/IP**.
5. Click the **Remove** button.



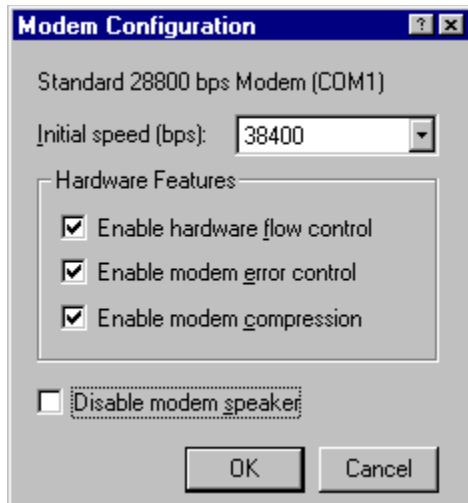
6. Click the **Yes** button. TCP/IP Protocol is no longer on the Protocols tab.
7. Click the **Close** button.
You will be warned that you have an invalid RAS configuration.



8. Click the **OK** button.



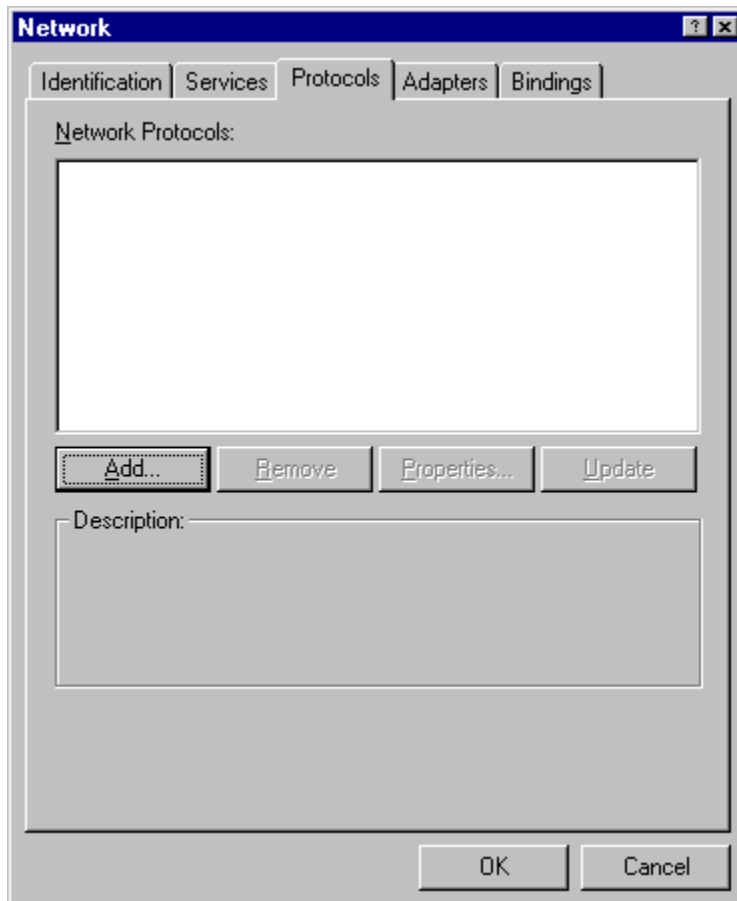
9. Click the **Yes** button to restart your computer.



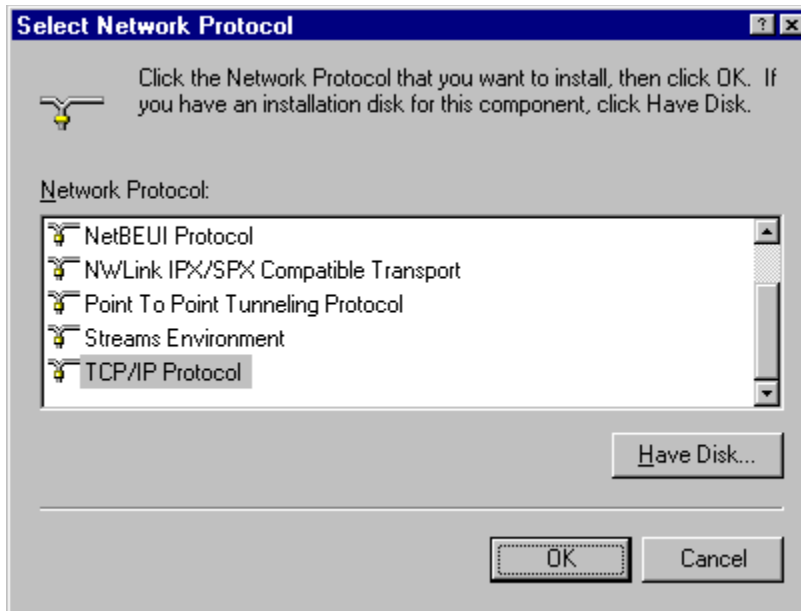
Adding TCP/IP

To add TCP/IP:

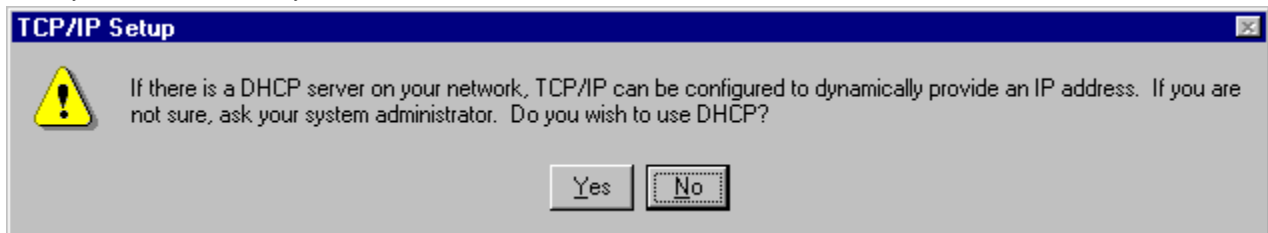
1. Click the **Start** button, point to **Settings**, and choose **Control Panel**.
2. Double-click the **Network** icon.
3. Select the **Protocols** tab.



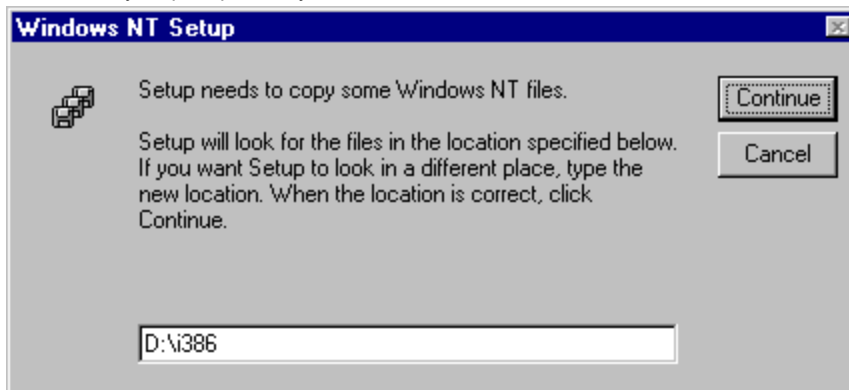
4. Click the **Add** button.



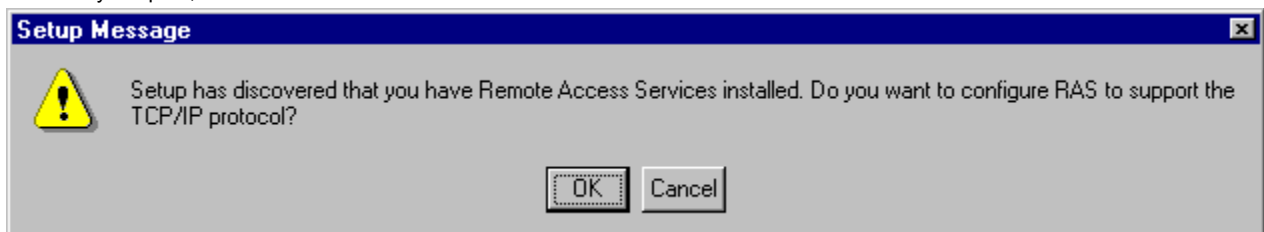
5. From the list of **Network Protocols**, select **TCP/IP Protocol**.
6. Click the **OK** button.
7. If you are asked whether you **wish to use DHCP**, click the **No** button.



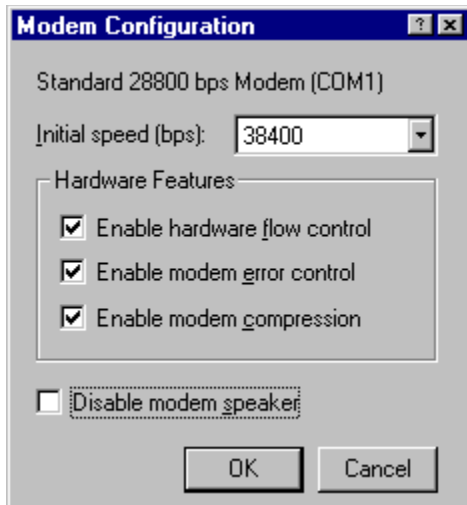
You may be prompted for your Windows NT CD-ROM.



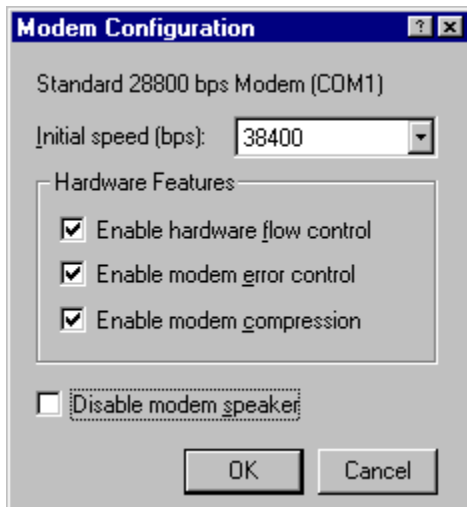
8. Verify the path, then click the **Continue** button.



9. If you are asked whether you would like to **configure RAS to support the TCP/IP protocol**, click the **OK** button.



10. Click the **Network** button.

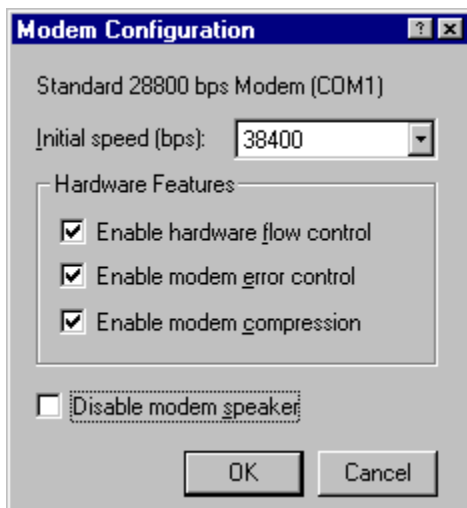


11. Uncheck **NetBEUI**.

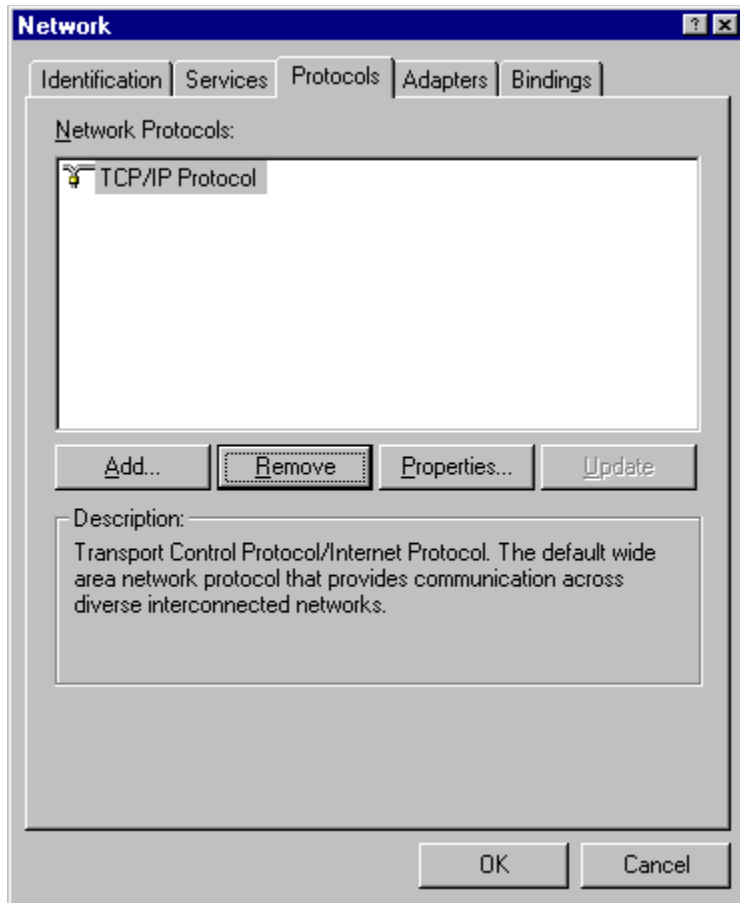
12. Check **TCP/IP**.

13. Uncheck **IPX**.

14. Click the **OK** button.



15. Click the **Continue** button.



16. Click the **Close** button.
17. Click the **Yes** button to restart your computer.

Version 10.17.99

