



**ThinkPad®**

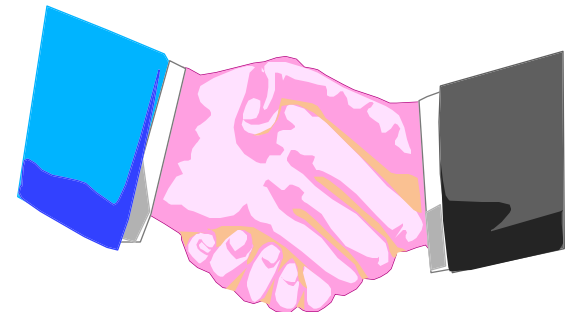
**ThinkPad 760 Notebooks**

# IBM ThinkPad - Our Promise of Value

## ThinkPad notebooks...

- Provide the most **convenient and powerful** way to work **anywhere** in a **connected** world
- Provide the **best cost of doing business** as mobile computing becomes mission critical within the networked enterprise
- Provide the **flexibility and convenience** of mobile computing with the **power and usability** to extend your reach

ThinkPad



# ThinkPad 760 - Leading the Industry

- "The Best of the Best" -- 760E
  - Laptop Buyer's Guide & Handbook, February 1997
- "Top 20 Notebook PCs: Power Notebook" -- 760E
  - PC World, February 1997
- 1997 Editor's Choice Award -- 760CD
  - BYTE, January 1997
- Best High-End Notebook PC -- 760CD
  - Computer Shopper, January 1997
- Best of the Year: 760 Series
  - PC Magazine, January 1997
- "A-List" -- "State-of-the-Art" notebook
  - PC/Computing, February 1996
- Best Products of the Year -- Portable PC
  - PC Magazine, January 7, 1997

Over 300 awards!



## ThinkPad

# What's New? - ThinkPad 760XL/XD

- High-performance 166MHz Pentium processor with MMX Technology
- Hard disk drive capacities up to 3.0GB\*
  - 6.0GB with 2nd hard disk drive
- 8X CD-ROM
  - standard or optional



## ThinkPad

# ThinkPad Family

General  
Business



365

UltraPortable



560

Enhanced



760

# ThinkPad

# ThinkPad 760 Notebook Series

- Provide the latest power, connectivity and configuration flexibility to optimize effectiveness and maximize investment return.



ThinkPad

# ThinkPad 760 Series

- *Advanced Technology*
- *Full Functionality*
- *Configuration Flexibility*
- *Investment Protection*
- *Connectivity*



760EL  
133MHz, 12.1" TFT  
Win 95 or Win NT



760E  
150MHz, 12.1" TFT  
1024x768, Win 95



760ED  
133MHz, 12.1" TFT  
1024x768, CD, Win 95



760/XL  
166MHz MMX, 12.1" TFT  
Win NT  
**NEW!**



760XD  
166MHz MMX, 12.1" TFT  
1024x768, CD, Win 95  
**NEW!**

# ThinkPad

# ThinkPad 760XD/XL

	<b>760XD</b> 9546-U9E	<b>760XL</b> 9547-U9C	<b>760XL</b> 9547-U9K
<b>Pentium*</b>	166MHz MMX	166MHz MMX	166MHz MMX
<b>Display</b>	12.1" TFT	12.1" TFT	12.1" TFT
<b>Max Res.</b>	1024x768	800x600	800x600
<b>HDD*</b>	3.0GB	2.1GB	2.1GB
<b>CD-ROM</b>	8X	Optional	Optional
<b>MPEG</b>	MPEG 1 & 2	MPEG 1	MPEG 1
<b>Memory</b>	32MB	16MB	32MB
<b>Audio</b>	Yes	Yes	Yes
<b>Fax/Modem</b>	Yes (via DSP)	Optional PC Card	Optional PC Card
<b>Infrared</b>	1.15Mbps	1.15Mbps	1.15Mbps
<b>Weight*</b>	3.02 kg. 6.7 lbs.	3.04 kg. 6.7 lbs.	3.04 kg. 6.7 lbs.
<b>O/S</b>	Win 95	Win 95	Win NT

## ThinkPad

## US/Canada



# ThinkPad 760 Series

	<b>760XD</b> 9546-F9E	<b>760XL</b> 9547-F9C	<b>760XL</b> 9547-F9K
<b>Pentium*</b>	166MHz MMX	166MHz MMX	166MHz MMX
<b>Display</b>	12.1" TFT	12.1" TFT	12.1" TFT
<b>Max Res.</b>	1024x768	800x600	800x600
<b>HDD*</b>	3.0GB	2.1GB	2.1GB
<b>CD-ROM</b>	8X	Optional	Optional
<b>MPEG</b>	MPEG 1/2	MPEG 1	MPEG 1
<b>Memory</b>	32MB	16MB	32MB
<b>Audio</b>	Yes	Yes	Yes
<b>Fax/Modem</b>	Yes (via DSP)	Optional PC Card	Optional PC Card
<b>Infrared</b>	1.15Mbps	1.15Mbps	1.15Mbps
<b>Weight*</b>	3.02 kg. 6.7 lbs.	3.04 kg. 6.7 lbs.	3.04 kg. 6.7 lbs.
<b>O/S</b>	Win 95	Win 95	Win NT

## ThinkPad

Canadian  
French

# ThinkPad 760 Series

	<b>760XD</b> 9546-A9E	<b>760XL</b> 9547-A9C	<b>760XL</b> 9547-A9K
<b>Pentium*</b>	166MHz MMX	166MHz MMX	166MHz MMX
<b>Display</b>	12.1" TFT	12.1" TFT	12.1" TFT
<b>Max Res.</b>	1024x768	800x600	800x600
<b>HDD*</b>	3.0GB	2.1GB	2.1GB
<b>CD-ROM</b>	8X	Optional	Optional
<b>MPEG</b>	MPEG 1/2	MPEG 1	MPEG 1
<b>Memory</b>	32MB	16MB	32MB
<b>Audio</b>	Yes	Yes	Yes
<b>Fax/Modem</b>	Yes (via DSP)	Optional PC Card	Optional PC Card
<b>Infrared</b>	1.15Mbps	1.15Mbps	1.15Mbps
<b>Weight*</b>	3.02 kg. 6.7 lbs.	3.04 kg. 6.7 lbs.	3.04 kg. 6.7 lbs.
<b>O/S</b>	Win 95	Win 95	Win NT

## ThinkPad

## AP South English

# ThinkPad 760 Series

	<b>760XD</b> 9546-S9E	<b>760XL</b> 9547-S9C	<b>760XL</b> 9547-S9K
<b>Pentium*</b>	166MHz MMX	166MHz MMX	166MHz MMX
<b>Display</b>	12.1" TFT	12.1" TFT	12.1" TFT
<b>Max Res.</b>	1024x768	800x600	800x600
<b>HDD*</b>	3.0GB	2.1GB	2.1GB
<b>CD-ROM</b>	8X	Optional	Optional
<b>MPEG</b>	MPEG 1/2	MPEG 1	MPEG 1
<b>Memory</b>	32MB	16MB	32MB
<b>Audio</b>	Yes	Yes	Yes
<b>Fax/Modem</b>	Yes (via DSP)	Optional PC Card	Optional PC Card
<b>Infrared</b>	1.15Mbps	1.15Mbps	1.15Mbps
<b>Weight*</b>	3.02 kg. 6.7 lbs.	3.04 kg. 6.7 lbs.	3.04 kg. 6.7 lbs.
<b>O/S</b>	Win 95	Win 95	Win NT

## ThinkPad

## LA Spanish

# ThinkPad 760 Series

	<b>760XD</b> 9546-P9E	<b>760XL</b> 9547-P9C	<b>760XL</b> 9547-P9K
<b>Pentium</b>	166MHz MMX	166MHz MMX	166MHz MMX
<b>Display</b>	12.1" TFT	12.1" TFT	12.1" TFT
<b>Max Res.</b>	1024x768	800x600	800x600
<b>HDD</b>	3.0GB	2.1GB	2.1GB
<b>CD-ROM</b>	8X	Optional	Optional
<b>MPEG</b>	MPEG 1/2	MPEG 1	MPEG 1
<b>Memory</b>	32MB	16MB	32MB
<b>Audio</b>	Yes	Yes	Yes
<b>Fax/Modem</b>	Yes (via DSP)	Optional PC Card	Optional PC Card
<b>Infrared</b>	1.15Mbps	1.15Mbps	1.15Mbps
<b>Weight</b>	3.02 kg. 6.7 lbs.	3.04 kg. 6.7 lbs.	3.04 kg. 6.7 lbs.
<b>O/S</b>	Win 95	Win 95	Win NT

## ThinkPad

LA Brazil.  
Portuguese

# ThinkPad 760 Series

	<b>760XD</b> 9546-X9E	<b>760XL</b> 9547-X9C	<b>760XL</b> 9547-X9K
<b>Pentium*</b>	166MHz MMX	166MHz MMX	166MHz MMX
<b>Display</b>	12.1" TFT	12.1" TFT	12.1" TFT
<b>Max Res.</b>	1024x768	800x600	800x600
<b>HDD*</b>	3.0GB	2.1GB	2.1GB
<b>CD-ROM</b>	8X	Optional	Optional
<b>MPEG</b>	MPEG 1/2	MPEG 1	MPEG 1
<b>Memory</b>	32MB	16MB	32MB
<b>Audio</b>	Yes	Yes	Yes
<b>Fax/Modem</b>	Yes (via DSP)	Optional PC Card	Optional PC Card
<b>Infrared</b>	1.15Mbps	1.15Mbps	1.15Mbps
<b>Weight*</b>	3.02 kg. 6.7 lbs.	3.04 kg. 6.7 lbs.	3.04 kg. 6.7 lbs.
<b>O/S</b>	Win 95	Win 95	Win NT

## ThinkPad

## EMEA

# ThinkPad 760 Series

	<b>760XD</b> 9546-J9E	<b>760XL</b> 9547-J9C	<b>760XL</b> 9547-J9K
<b>Pentium*</b>	166MHz MMX	166MHz MMX	166MHz MMX
<b>Display</b>	12.1" TFT	12.1" TFT	12.1" TFT
<b>Max Res.</b>	1024x768	800x600	800x600
<b>HDD*</b>	3.0GB	2.1GB	2.1GB
<b>CD-ROM</b>	8X	Optional	Optional
<b>MPEG</b>	MPEG 1/2	MPEG 1	MPEG 1
<b>Memory</b>	32MB	16MB	32MB
<b>Audio</b>	Yes	Yes	Yes
<b>Fax/Modem</b>	Yes (via DSP)	Optional PC Card	Optional PC Card
<b>Infrared</b>	1.15Mbps	1.15Mbps	1.15Mbps
<b>Weight*</b>	3.02 kg. 6.7 lbs.	3.04 kg. 6.7 lbs.	3.04 kg. 6.7 lbs.
<b>O/S</b>	Win 95	Win 95	Win NT

ThinkPad

Japan -  
Japanese Keyboard

# ThinkPad 760 Series

	<b>760XD</b> <i>9546-E9E</i>
<b>Pentium*</b>	166MHz MMX
<b>Display</b>	12.1" TFT
<b>Max Res.</b>	1024x768
<b>HDD*</b>	3.0GB
<b>CD-ROM</b>	8X
<b>MPEG1/2</b>	Yes
<b>Memory</b>	32MB
<b>Audio</b>	Yes
<b>Fax/Modem</b>	Yes (via DSP)
<b>Infrared</b>	1.15Mbps
<b>Weight*</b>	3.02 kg. 6.7 lbs.
<b>O/S</b>	Win 95

ThinkPad

Japan -  
English Keyboard





# Pentium with MMX Technology

- **166MHz Pentium processor with MMX Technology is the fastest mobile processor available**
- **Increased performance in the applications you're using today**
- **Even greater performance with applications created to take advantage of MMX technology**
  - New instructions that accelerate multimedia and communications performance
  - 32KB Level One Cache
  - Improved Branch Prediction
  - Superscalar Architecture
  - More efficient instruction decoder
  - Floating Point Unit
  - 64-bit External Data Bus
- **For more information . . . <http://mmx.com>**



**ThinkPad**

# Advanced Architecture

- **PCI Bus**

- High bandwidth, high performance bus with data transfer rates up to 132MB/sec
- Utilize high performance peripherals

- **PC CardBus**

- Supports new 32-bit and existing 16-bit cards
- Faster performance than ISA 16-bit bus

- **Video Graphics**

- PCI bus for increased video performance
- 64-bit graphics engine\*



## ThinkPad

# PC CardBus

PC Card Release 2.0 & 2.1	PC CardBus
<i>ISA bus extension</i>	<i>PCI bus extension</i>
- 16 bit bus interface	- <b>32 bit</b> bus interface
- Operates @ 8MHz	- Operates @ <b>33MHz</b>
- Up to 20MB/sec	- Up to <b>132MB/sec</b>
- Single function card	- <b>Multiple function</b> card
	- <b>High bandwidth</b> for communication; data transfers
	- Release 2.0 & 2.1 support

## ThinkPad

# UltraBay

- **2nd HDD**
  - double your storage
- **2nd Battery**
  - expand your battery life
- **8X CD-ROM**
  - standard/optional
- **Diskette Drive**
- **Wireless Modems**
  - connectivity from almost anywhere



*Ultra Flexibility !*

# ThinkPad

# Multimedia Features

- **8X CD-ROM**
  - Standard or Optional
- **Total Image Video with MPEG support**
  - Playback MPEG-1 and MPEG-2 HHR on ED/XD
  - Playback MPEG-1 on all other current 760 models
- **Enhanced Video**
  - Video-in and -out (NTSC/PAL)
  - Video and still image capture (ED/XD)
  - Full screen playback with hardware video acceleration, scaling and interpolation
  - MIDI/joystick port
- **Support for Sound Blaster Pro applications**

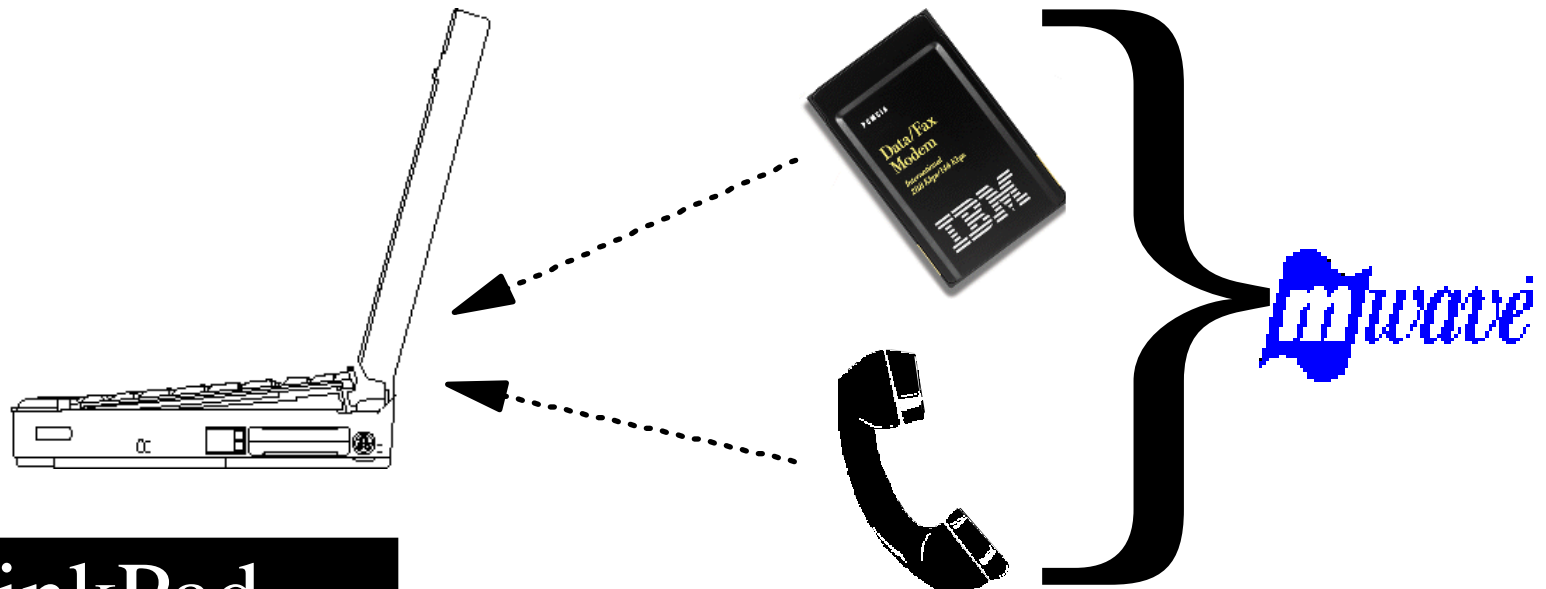
ThinkPad



# Communications Features (E/ED/XD)

**Media Processor (DSP)** offers advanced communications features, including:

- **Up to 28.8Kbps data/14.4Kbps fax modem**
- **Comprehensive telephony**
  - full-duplex speakerphone
  - digital answering machine



**ThinkPad**

# TheatreSound (E/ED/XD)

**Media Processor (DSP)** offers advanced audio features, including:



- **Support for Sound Blaster Pro applications**
- **Stereo audio**
  - 44.1KHz MPC-2 16-bit audio with real-time compression
  - Simultaneous audio play and record
  - Digital audio mixing with up to eight open .WAV sources
- **General MIDI compatible**
  - 32-voice wavetable synthesizer
- **Integrated microphone**
- **Audio in and out**



## ThinkPad

# Docking Strategy

## Investment Protection

- **Backward compatible with existing docking solutions**
- **Deliver desktop equivalent functionality**
- **Clean transition from ISA-based docking to PCI**
- **Improve upon existing docking solutions**
  - Modularity
  - Building block approach to upgrades



ThinkPad

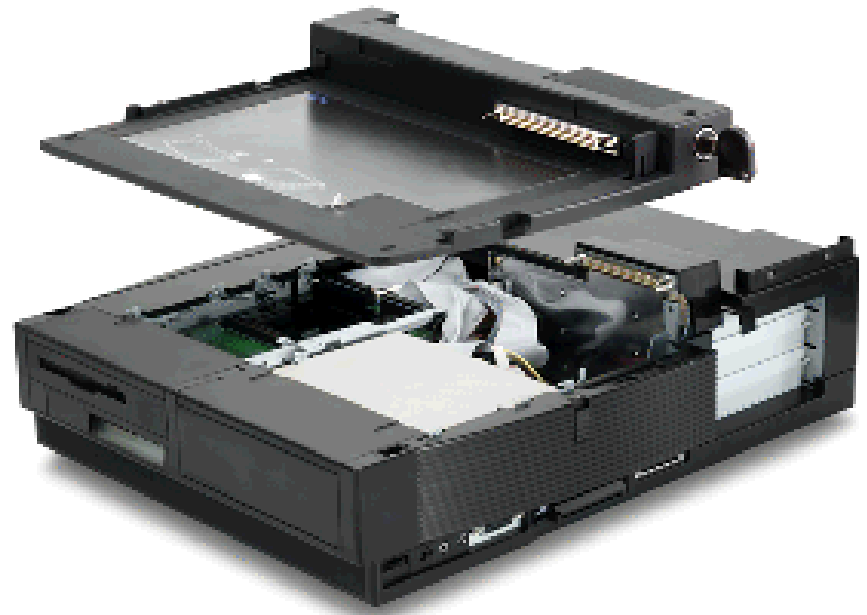


# SelectaDock Solutions

## SelectaDock Base Model I



SelectaDock I



SelectaDock II

# ThinkPad

# SelectaDock Specifications

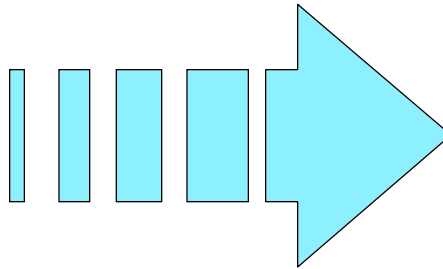
	SelectaDock Base Model I	SelectaDock I* (w/ Base)	SelectaDock II* (w/ Base)
Std Ports	x	x	x
Audio Out	x	x	x
Audio In			x
SCSI-2		x	x
Game/MIDI		x	x
Full PCI/ISA		1 (shared)	2 (shared)
Half PCI			1
PC Card		2 TII or 1 TIII	2 TII or 1 TIII
UltraBay		1 device	2 devices
Half-High Bay			1
Speaker			x
Security	x	x	x

\* *SelectaDock I and II require Base Model*

## ThinkPad

# Desktop Alternative

- **Huge 12.1 displays**
  - up to 1024x768 resolution on select models
- **Variety of docking options**
  - up to 2 1/2 slots, 2 UltraBay devices, 1 standard bay



ThinkPad

# Security

- **Power-on Password**
  - Prevents unauthorized user from booting system
- **Supervisor Password**
  - Protects system functions and hardware configuration
- **HDD Password**
  - Protects data on HDD
- **Keyhole for optional lock and/or cable**
  - Protects components and secures notebook



ThinkPad

# Selected Options by IBM

- **Memory (64-bit EDO SO DIMM)**
  - 16MB 92G7341 (feat. code 3285)
  - 32MB 92G7342 (feat. code 3286)
  - 64MB 4391-64C\*\*
- **Docking Solutions**
  - SelectaDock Base Model I (39H7405)
  - SelectaDock I (3547001)
  - SelectaDock II (3547002)
  - Display Stand II (39H7436)
- **Storage**
  - NEW** ■ 3.0GB Hard Disk Drive (45H8789)
  - 2.1GB Hard Disk Drive (69H8414)
  - NEW** ■ 8X CD-ROM (45H8786)
- **PC Card 33.6Kbps\* Modem with XJACK**
  - 55H6759
- **PC Card 28.8 Kbps\* International Modem**
  - 42H4319



## ThinkPad

# ThinkPad Proven - Options

The ThinkPad Proven emblem on a product is a statement that the product has been tested and is warranted by the manufacturer, and will be supported according to IBM's demanding ThinkPad compatibility standards.

<http://www.pc.ibm.com/thinkpad>

## ThinkPad Proven Partners and Products include:

- |                    |                         |
|--------------------|-------------------------|
| ■ Port, Inc.       | Carrying Cases          |
| ■ Apex Data        | Modems & Memory         |
| ■ Apricorn         | Memory                  |
| ■ Extended Systems | Infrared Accessories    |
| ■ Lind Electronics | Power Accessories       |
| ■ Xtend Micro      | Power Accessories       |
| ■ Artisoft         | Remote Control Software |



\*Tested, warranted and supported by manufacturer to ThinkPad Compatibility Standards.

# ThinkPad

# Included Software - Win 95 Models

- Microsoft Windows 95
- Lotus SmartSuite CD-ROM\*\*
- CompuServe for Windows
- Puma TranXit
- NetFinity for Windows 95
- CoSession Host
- FaxWorks Voice for Windows (XD)
- IntelliLink Connect
- IBM Anti-Virus
- IBM Internet Connection Services with Netscape Navigator Web browser
- ASYMETRIX Digital Video Producer (XD)



USA/Canada  
 Canadian French  
 AP English  
 LA Spanish

## ThinkPad

*Listing of software that may be preinstalled on the hard disk*

\*\*Diskettes and hardcopy documentation available at additional charge

# Included Software - Win 95 Models

- Microsoft Windows 95
- Lotus SmartSuite
- Lotus Notes Express Mail
- CompuServe for Windows
- Puma TranXit
- NetFinity for Windows 95
- CoSession Host
- FaxWorks Voice for Windows
- IntelliLink Connect
- IBM Anti-Virus
- IBM Internet Connection Services with Netscape Navigator Web browser
- ASYMETRIX Digital Video Producer (XD)



Brazilian Portuguese

## ThinkPad

*Listing of software that may be preinstalled on the hard disk*

\*\*Diskettes and hardcopy documentation available at additional charge



# Included Software - Win 95 Models

- Microsoft Windows 95
- Lotus Organizer
- CompuServe for Windows
- Puma TranXit
- NetFinity for Windows 95
- CoSession Host
- IntelliLink Connect
- IBM Anti-Virus
- IBM Internet Connection Services with Netscape Navigator Web browser
- ASYMETRIX Digital Video Producer (XD)



EMEA

ThinkPad

*Listing of software that may be preinstalled on the hard disk*

\*\*Diskettes and hardcopy documentation available at additional charge

# Included Software - Win 95 Models

- Microsoft Windows 95
- Puma TranXit
- FaxWorks Voice for Windows
- IBM Anti-Virus
- Hyper Dictionary
- Norikae Map
- Nifty Manager
- People/Guippy II
- IBM Internet Connection services with Netscape Navigator Web browser
- Asymetrix Digital Video Producer (760XD)



Japan -Japanese  
Keyboard

## ThinkPad

*Listing of software that may be preinstalled on the hard disk*

# Supported Operating Systems

- **IBM PC DOS 7, J7.0/V**
- **OS/2 Warp 4**
- **OS/2 Warp, Version 3 with and without WIN-OS/2**
- **OS/2 Warp Connect, Version 3 with and without WIN-OS/2**
- **OS/2 Warp, Version 3 Japanese with and without WIN-OS/2**
- **OS/2 Warp Connect, Version 3 Japanese with and without WIN-OS/2**
- **OS/2 Warp, Japanese Version 3.0**
- **MS-DOS Version 6.22**
- **Microsoft Windows 95**
- **Microsoft Windows Version 3.11/J3.1**
- **Microsoft Windows for Workgroups 3.11**
- **Microsoft Windows NT Workstation V3.51\***
- **Microsoft NT Workstation V3.51 Japanese\***
- **Microsoft Windows NT Workstation 4.0\***

**ThinkPad**

# Customer Support & Service

- **Voice Technical Support**
  - On-Line Housecall
  - remote access
- **ThinkPad EasyServ**
  - courier pickup
- **International Warranty Service\***
- **Online Support Services**
  - <http://www.pc.ibm.com/thinkpad>
  - over 5000 files available for download



ThinkPad

# Important Notices

- (c) International Business Machines Corporation 1997
- 4-97
- All Rights Reserved
- IBM continues to enhance products and services as technologies emerge and reserves the right to alter product information without prior notice. References in this publication to IBM products and services do not imply that IBM intends to make them available in all countries.
- \*IBM, ThinkPad and HelpWare are registered trademarks and Total Image Video, TheatreSound, EasyServ, UltraBay, SelectaDock and ThinkPad Proven are trademarks of International Business Machines Corporation. Microsoft, Windows and the Windows 95 logo are registered trademarks of Microsoft Corporation. Other company, product and service names may be trademarks or service marks of others. Intel, Pentium, MMX are trademarks or registered trademarks of Intel Corp.
- Not all features are available on all models.
- \*MHz only measures microprocessor internal clock speed, not application performance. Many factors affect application performance.
- \*When referring to hard drive capacity, MB stands for million bytes and GB stands for one thousand million bytes. Total user-accessible capacity may vary depending on operating environments.
- \*Results based on BAPCo's (Business Applications Performance Corporation) SYSmark benchmark test. Battery life will vary based on many factors including screen brightness, applications, features, battery conditioning, power management and other customer preferences.
- \*Weights are approximate, and may vary based on vendor components.
- \*International Warranty Service in those countries where this product is sold by IBM or IBM Business partners (registration required). For terms and conditions or a copy of IBM's limited warranty, call 1-800-772-2227 or in Canada 1-800-465-7999
- INTERNATIONAL BUSINESS MACHINES CORPORATION PROVIDES THIS PUBLICATION "AS IS" WITHOUT WARRANTY OF ANY KIND, EITHER EXPRESSED OR IMPLIED, INCLUDING, BUT NOT LIMITED TO, THE IMPLIED WARRANTIES OF MERCHANTABILITY OR FITNESS FOR A PARTICULAR PURPOSE. SOME STATES DO NOT ALLOW DISCLAIMER OF EXPRESS OR IMPLIED WARRANTIES IN CERTAIN TRANSACTIONS, THEREFORE, THIS STATEMENT MAY NOT APPLY TO YOU.

## ThinkPad

# Appendix A - Other Specifications

- **Weight\*:** XD - 3.18 kg. / 7.0 lbs. (with battery pack and CD-ROM)  
XL - 3.05 kg. / 6.7 lbs. (with battery pack and CD-ROM)
- **Dimensions:** XD - 50.7 x 297 x 210 mm / 2.00 x 11.7 x 8.3 in.  
XL - 54.3 x 297 x 210 mm / 2.14 x 11.7 x 8.3 in.
- **Battery Life\*:** XD - 2 / 4 hrs. (one battery / two batteries)  
XL - 2.3 / 4.6 hrs. (one battery / two batteries)
- **Battery Charge Time\*:** 2.0-3.0 hrs. (during operation)

ThinkPad

# Appendix B - Agency Approvals

- **FCC Class-B Certified to comply with FCC Rules, Part 15**
- **VCCI CLASS 2 (0 db)**
- **CISPR22B**
- **UL-1950**
- **CSA C22.2 No. 950**
- **NOM**
- **UK-PITT**
- **JATE**
- **SASO**
- **IEC950**

ThinkPad