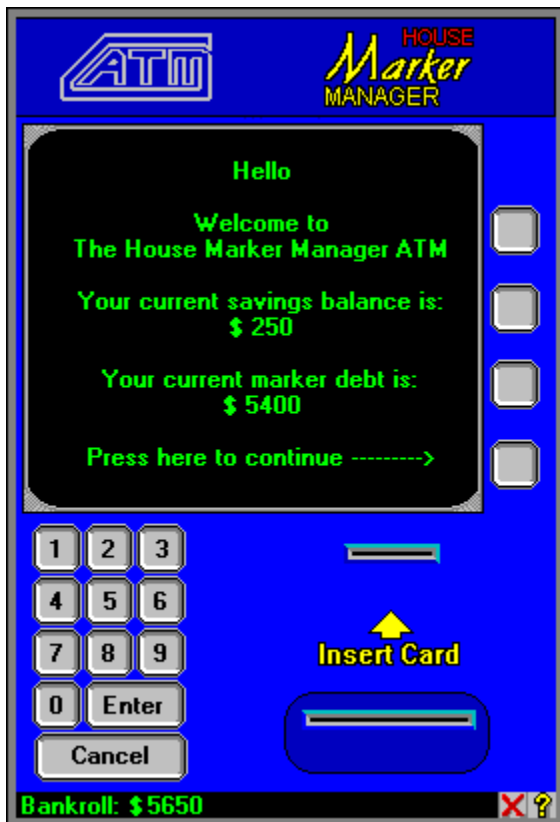




## The House Marker Manager ATM

The House Marker Manager ATM provides all the banking you will need while gambling. You can put your winnings in a savings account or get instant credit when you need it.

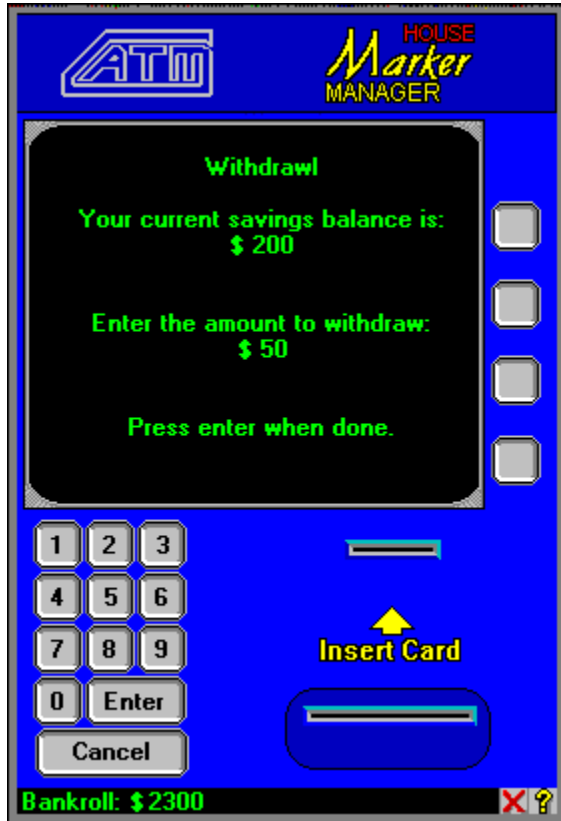


Click on the ATM machine for more information.



## Withdrawl

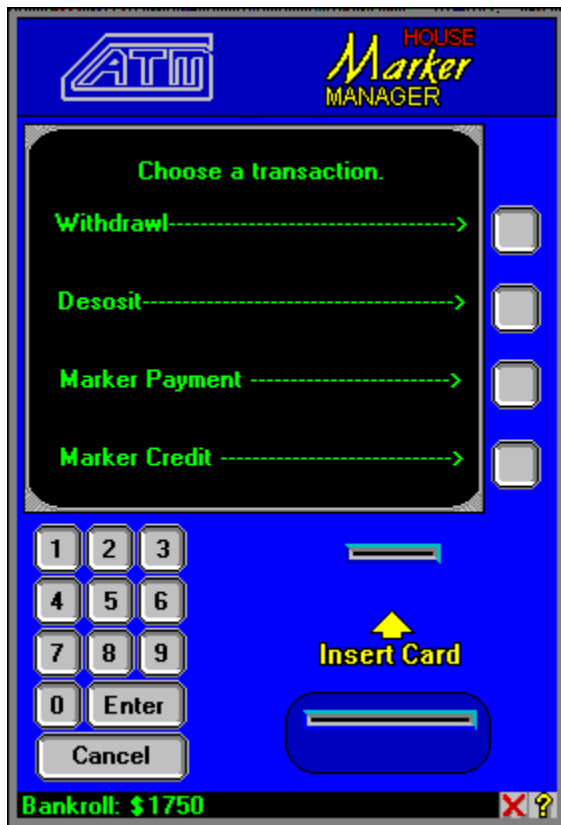
To make a withdrawal, enter the amount you wish to withdraw using the keypad. Press the enter key and the money will pop out.



Making a Deposit  
Getting Credit  
Paying Debts

## Selecting a Transaction

Select a transaction by clicking on the appropriate action key.



[Making a Withdrawl](#)

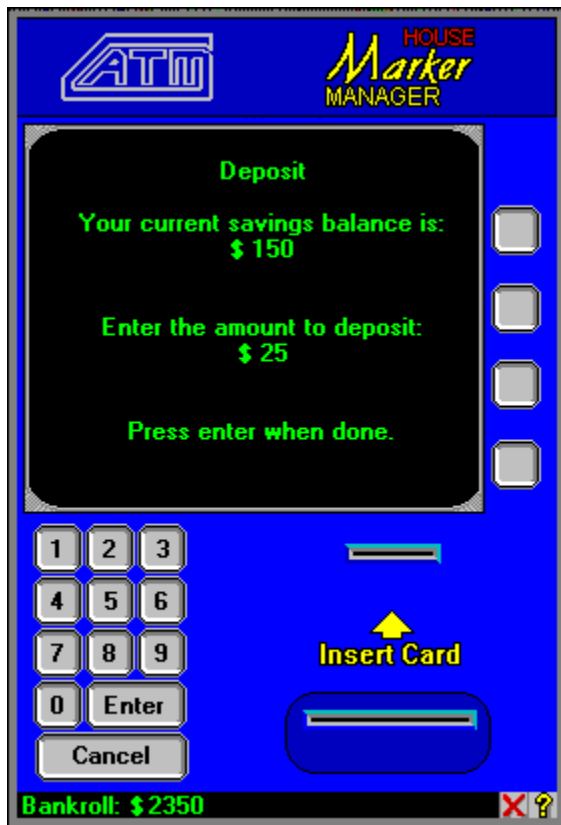
[Making a Deposit](#)

[Getting Credit](#)

[Paying Debts](#)

## Making a Deposit

To make a deposit, enter the amount to deposit using the keypad and press enter.



Making a Withdrawal

Getting Credit

Paying Debts

## Obtaining Credit

The House Marker Manager ATM can give you up to \$10000 of instant credit. The amount credit you have available depends on how much you have in your savings account and in your bankroll. If you have less than \$10000, you can borrow the difference.

For Example:

If you have \$1000 in your savings account and \$1000 in your bankroll, your available credit is \$8000.

The amount of available credit is shown on the ATM screen.



Making a Withdrawl

Getting Credit

Paying Debts

## Paying Debts

You can repay your debts by entering the amount to repay on the keypad and pressing enter. The amount of your debt is shown on the ATM screen.



[Making a Withdrawal](#)

[Making a Deposit](#)

[Getting Credit](#)

## ATM Screen

The ATM screen will give you the instructions you need to choose which type of transaction you want. It also provides information on account balances and debts.



## Action Keys

The Action Keys allow you to choose the type of transaction you want. When they are active an arrow on the ATM screen will point to them.

## The Keypad

The keypad is used to enter money amounts for the various transactions you will perform.

## Card Slot

This is the slot where your ATM card will be inserted.

## Money Tray

This is where the money will come out when you make a withdrawal or get credit.

## Help Button

Click this button to start this help file.

## Cancel Button

Click this button to exit the ATM machine.

## Bankroll

This displays your current amount of "pockey money".





