

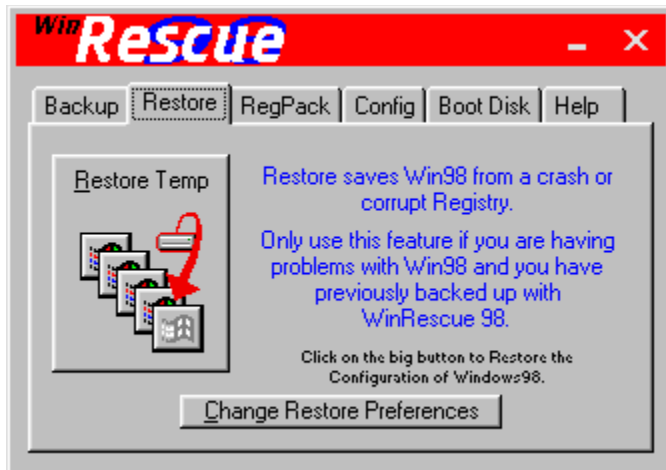


Click on an item above to get more information.

Backup Screen - press the Backup button to backup the configuration of Windows98. The registry and other configuration files are backed up. A spare copy of the registry is also placed in the Windows directory.

Press the "Change Backup Preferences" to change Backup Preferences, like, the number of backups, backup to diskette, diskette drive, which registry is backed up, and backup compression.

Do not press the "Backup" button if Windows98 is not running correctly. If you have not performed a Backup with WinRescue, you cannot restore from a backup or from the Spare Registry. You may, however, try restoring a temporary backup or using RegPack to fix the registry.



Click on an item above to get more information.

[Restore Screen](#) - press the [Restore button](#) to restore the configuration of Windows98. There are many ways to restore: [Restore Temporary Backup](#), [Restore Spare Registry](#), [Restore Backup Set](#), [Restore from Diskette](#), and [Restore Original Registry](#).

Restoring does not improve the registry, it only changes the registry back to what it was before. To improve the registry, try the [RegPack feature](#).

After the "Restore" button is clicked, a [dialog box](#) will be shown which will allow you to change the way you want to restore.

Press the ["Change Restore Preferences" button](#) to change restore method.



Click on an item above to get more information.

[RegPack Screen](#) - press the [RegPack button](#) to repair and rebuild the registry. During the RegPack process, Windows98 will quit and the registry will be fixed and reinstalled. Then Windows98 will begin again. Press the "Check the Registry", to scan the Registry for errors.



Click on an item above to get more information.

[Config Screen](#) - press the [Configure button](#) to show the Preferences window. Selecting one of the items from the list box will also display the Preferences window. The Preferences window has [Backup and Restore Preferences](#), [Miscellaneous Preferences](#), the [Backup Manager](#), and [Files to Backup and Restore](#).



Click on an item above to get more information.

Boot Disk Screen - press the Boot Disk button to make a bootup diskette. If Windows98 then does not start up in Safe Mode, just insert the diskette in the drive and restart the computer. The bootup diskette will start DOS and run the DOS version of WinRescue 98.

When making the bootup diskette, after you press the "Boot Disk" button, an input box will appear. Put the drive letter of the diskette and press OK. A DOS window will open. Follow the directions. The DOS window will not be finished until you answer, no, to whether you want to format another diskette or not.

After a diskette has been created, check out the new diskette. Place the diskette in the drive and restart the computer. If the DOS version of WinRescue 98 starts, then the diskette is good. Store it in a safe place.

If the diskette does not work, it may be due to a bad diskette. Try it again with a different diskette.



Click on an item above to get more information.

[Help Screen](#) - press the [Help button](#) to show these Help pages. You may also press <F1> to show these Help pages.

[Show Startup Screen](#) - this is the screen that is shown when WinRescue 98 is first started.

[Show Tutorial](#) - this is special set of help screens that will quickly teach you how to use WinRescue.

Boot Disk Button - press the "Book Disk" button to make a bootup diskette.

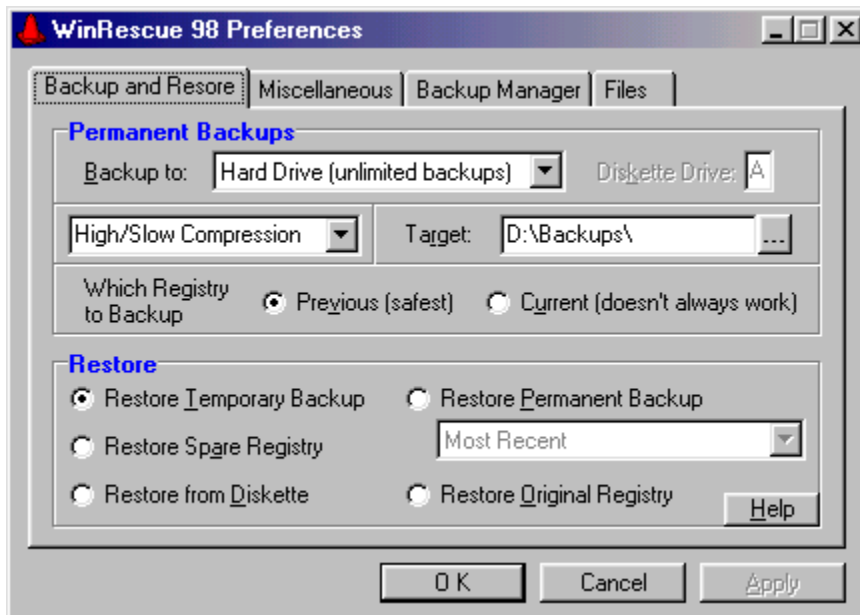
An input box will appear prompting you for the drive letter of the diskette drive (usually A or B).

Next a DOS window opens up. Follow the directions. Do not insert a diskette that has anything on it that you do not want to lose. This step will format the diskette erasing all of its contents and install system files. The DOS window is not finished until you answer, no, to whether you want to format another diskette or not. If it says it cannot make a system diskette, you need to insert another diskette and try formatting again.

After the DOS window disappears, special files will be created on the diskette.

Please check the new diskette. Place the diskette in the drive and restart the computer. If the DOS version of WinRescue 98 starts, then the diskette is good. Store it in a safe place.

If the diskette does not work, it may be due to a bad diskette. Try it again with a different diskette.



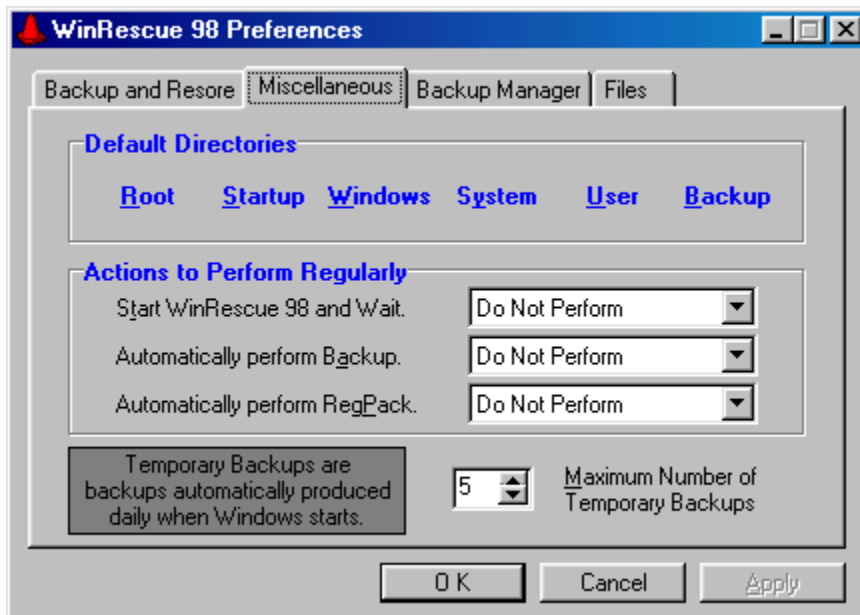
Click on an item above to get more information.

[Backup and Restore Preferences Screen](#) - allows the changing the following preferences: the method of backup (this includes the maximum number of backups to allow on the hard drive and backup to diskette), the diskette drive, compression ratio the backup sets, the Target directory for Backup Sets, which registry to backup, and the restore method.

The restore methods are Restore Temporary Backup, Restore Spare Registry, Restore Backup Set, Restore from Diskette, and Restore Original Registry.

[Target Directory for Backup Sets](#) - the location where Permanent Backup Sets are stored can be specified here. When a backup is made, it will be put in a subdirectory of the specified Target directory.

The location of the Temporary backups may also be changed. See Default Directories - Backup on the [Miscellaneous](#) tab.



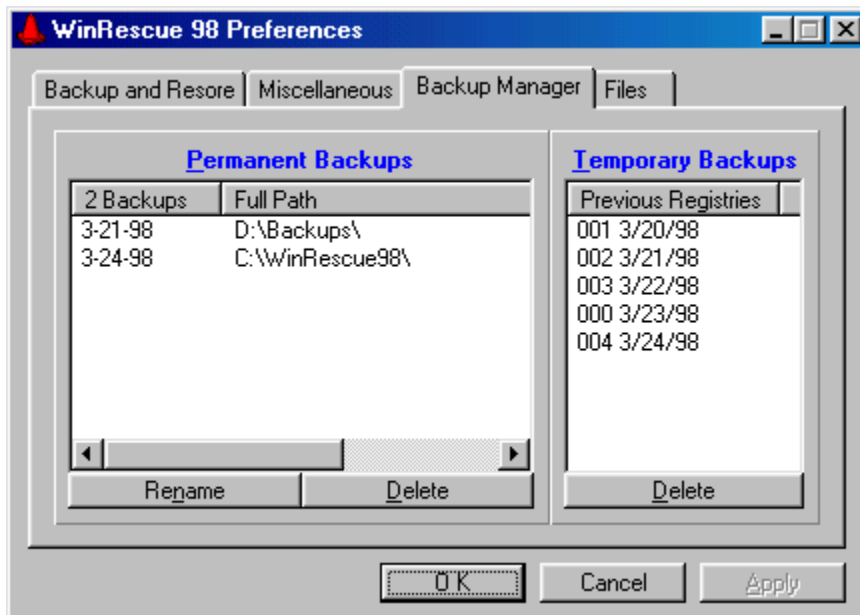
Click on an item above to get more information.

[Miscellaneous Preferences Screen](#) - allows the changing of default directories and automatic startup features.

The Default Directories are Root, Startup, Window, System (location of system.dat), User (location of user.dat), and Backup (desired location for temporary Win98 backups).

The Actions to Perform Regularly are Start WinRescue 98 and Wait, Backup, and RegPack. These actions will be performed at the specified interval when Win98 is started.

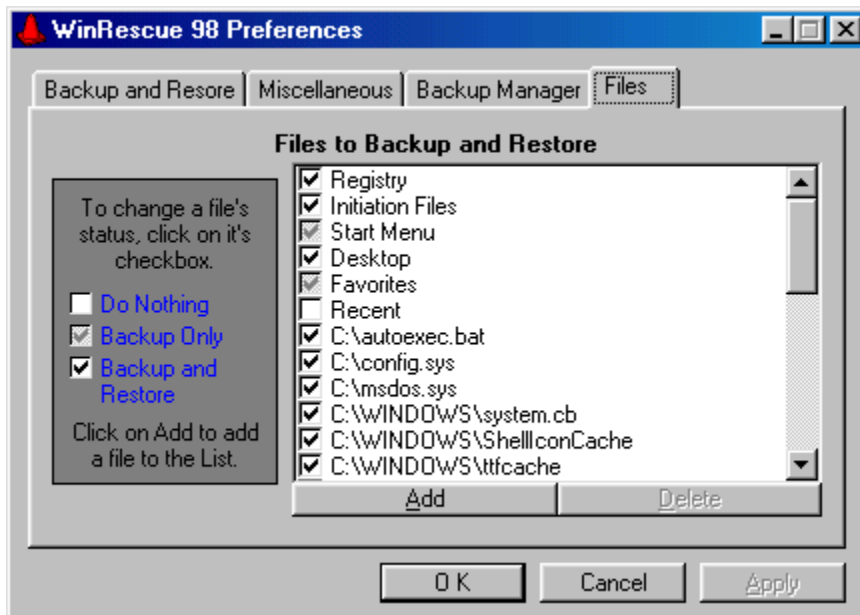
Win98 normally keeps five temporary backups. This number may be changed here.



Click on an item above to get more information.

[Backup Manager Screen](#) - all of the Permanent Backups (these are backups made by WinRescue 98) and Temporary Backups (these are backups made by Win98) are listed here. If you want to rename or delete a backup set, it should be done only from the Backup Manager, not from the Explorer.

Temporary Backups may be deleted from here too.



Click on an item above to get more information.

[Files](#) - allows the user to specify which files to backup and which files to restore. Files may also be added to the default list.

[Go here](#) for a description of each of the items listed.

The first 15 items may not be deleted, but they may be disabled by removing the check from their checkbox.

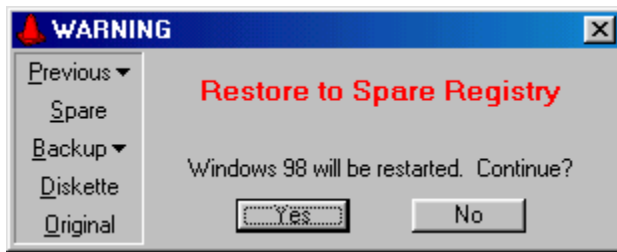
The check in the checkbox shows what will be done with that item during backup and restore. It may be changed by clicking on it.

If an item is not checked, it will not be backed up during a WinRescue backup or during bootup of Win98, and it will not be restored during a Restore to Temporary Backup or Restore to Backup.

If an item has a gray check in the checkbox, that item will be backed up only and not restored. The first two items, Registry and Initiation Files, will always be backed up.

If an item has a black check in the checkbox, that item will be both backed up and restored.

The Start Menu, Desktop, Favorites, and Recent items may not be backed up or restored with a Temporary Backup.



Click on an item above to get more information.

[Pre Restore Screen](#) - gives you a last chance to change the Restore method. The currently selected method is shown in the middle of the window.

On the left side of the window are the different restore methods that may be used. Selecting one will change the restore method.

Number of Backups - the dropdown box allows the user to select whether he will allow an unlimited number of backups, only one backup, up to 3, 5, or 10 backups, or whether to backup to diskette. If a limited number of backups are specified when a backup is made it will be added to the Target directory and if the limit is exceeded a previous backup will be deleted.

For example if "Hard Drive (up to 3 Backups)" is selected then only three backup sets are kept. When a fourth backup is made, the second backup set is deleted, the third backup set is moved up to the second slot and the new backup set is put in the third position. The first backup set is always kept unless manually deleted by you in the [Backup Manager](#).

Diskette - WinRescue 98 now makes backups to several diskettes if the backup set is too big for one diskette.

Note that WinRescue 98 now works with Win98 to make temporary backups every day when Win98 is started. All of the files specified in the Files screen (this includes any files added by the user) will be compressed into the temporary backup. Because of this, Permanent Backups do not need to be made as often as before.

[Backup Button](#) - press the "Backup" button to backup configuration files. These files will be copied to a subdirectory of the Target directory. WinRescue will assign the date to the name of the subdirectory and allow you to change it if you want.

To backup to diskette you must first change the [Backup Preferences](#).

[Compression Ratio of Backups](#) - this dropdown box allows the selection of one of four compression options:

Do Not Compress - backed up files are copied to the target directory and directories (Start Menu, Desktop, etc.) are compressed at the lowest ratio. 12 files (3.64 megabytes) were copied in 19 seconds.

Low/Fast Compression - compresses files at the lowest ratio. These backups are larger than higher ratio compressions, but the compression is faster. 12 files (3.64 megabytes) were compressed to .91 megabytes in 19 seconds.

Medium Compression - compresses files at the medium ratio. 12 files (3.64 megabytes) were compressed to .86 megabytes in 23 seconds.

High/Slow Compression - compresses files at the highest ratio. These backups are smaller, but compressing them takes longer. 12 files (3.64 megabytes) were compressed to .82 megabytes in 36 seconds.

Backup files are compressed into PKZip compatible files.

Which Registry to Backup

Windows keeps two Registries: previous Registries and the current Registry.

The current Registry choice is provided for those who like to live dangerously. Windows is constantly consulting and changing the current Registry. If Windows consults it while you are backing it up, your backup will be bad. You will only find out that it is bad when you try to restore from it and it doesn't work. So my advice to you is to backup the previous Registry or at least have a few on hand.

The previous Registry will not have any changes that have been made since Windows was started. If you are using this option and you want to save current changes, restart Windows98 first and then do a backup.

Saves any changes and closes the Preferences window.

Closes the Preferences window without saving any changes.

Saves any changes without closing the Preferences window.

[Restore Temporary Backup](#) - causes the Restore button (in the Restore window) to restore the specified files from a Temporary Backup.

A new feature of Win98 is that several temporary backups (usually 5) are kept. WinRescue 98 allows you to add files to these temporary backups. See the [Files](#) tab to specify which files to restore.

Start Menu, Desktop, Favorites, and Recent are not backed up by the Temporary Backups and so cannot be restored from a Temporary Backup.

[Restore Spare Registry](#) - causes the Restore button (on the [Restore page](#)) to restore the Spare Registry. Whenever a backup is made by WinRescue, WinRescue makes an uncompressed spare backup of the Previous Registry and places it in the Windows directory as user.ray and system.ray. This is the Spare Registry.

When Restore is performed with this method only the registry files and none of the other configuration files are restored.

[Restore Backup](#) - causes the Restore button (on the [Restore page](#)) to restore the selected Backup. The dropdown list box allows you to select which backup to restore. The top selection (Most Recent Backup) will restore the most recent backup. This method restores all of the files that are checked in the [Files](#) section.

[Restore from Diskette](#) - causes the Restore button (on the [Restore page](#)) to restore a backup from diskette. The drive letter of the diskette drive must be entered in the [Backup Preferences](#) (A is the default drive).

If the Backup spans several diskettes, insert the last diskette with user.daz on it, first. User.daz is a zip file with all of the individual files in it. Later, you will be prompted to insert the first diskette with user.daz on it and so on.

If other zip files (like, start.zip, desktop.zip, favorites.zip, and recent.zip) are spanned across two or more diskettes, you will also have to insert the last diskette with that file and then the first, second, etc.

[Restore Original Registry](#) - causes the Restore button (on the [Restore page](#)) to restore the Original Registry. Restoring to the Original Registry is just like reinstalling Windows without spending the thirty minutes copying files onto your hard drive that are already there. You will be prompted for a user name, time zone, etc.
This should be taken only as a last resort.

Files to Restore - these files are restored when "Restore Backup" or "Restore Temp" is executed.

Registry Files (the two registry files)

Initiation Files (the two initiation files)

Start Menu (all items in the Start Menu)

Desktop (all items on the Desktop)

Favorites (all items in Favorites)

Recent (all items in Recent)

autoexec.bat (bootup file for DOS for backwards compatibility only)

config.sys (bootup file for DOS for backwards compatibility only). If you have only had a later version of Win95 or Win98 on your computer, it is highly likely that you will not have autoexec.bat or config.sys on your computer.

msdos.sys (bootup configuration for DOS and Windows)

system.cb (empty shell of system.ini)

ShellIconCache (a cache of icons used by Windows)

ttfcache (a cache of fonts used by Windows)

dosstart.bat (something like, autoexec.bat, but it is only activated when DOS is run from Windows)

protocol.ini (initiation file for networks)

[Registry Files](#) - system.dat and user.dat are the Registry files. They are in the Windows directory and are hidden.

System.ray and user.ray are the Spare Registry files. They are also in the Windows directory and are hidden.

Initiation Files - win.ini and system.ini are initiation files consulted by the Registry. They are in the Windows directory. They are mainly used for backwards compatibility with earlier versions of Windows.

[Desktop](#) - the shortcuts and files that appear on the desktop are backed up in desktop.zip. This will restore them to the desktop.

Start Menu - start.ini is a list of files and directories in the start menu. This file is created by WinRescue and put in the Backup directory. Start.zip is also produced. It is a zip file of all of the files in the Start Menu.

When Restore Backup is performed with this option checked, WinRescue compares all of the files and directories in the start menu with the list in Start.ini and deletes any excess. Then the previous files are unzipped from the start.zip file.

This option is recommended after Restore Original Registry has been performed. It will get rid of all the excess shortcuts that Windows put in the Start Menu.

[Favorites](#) - the items in the Favorites list are backed up in favorites.zip. This will restore them to the Favorites list.

Recent - the items in the Recent list are backed up in recent.zip. This will restore them to the Recent list.

[List of All Backup Sets](#) - when a backup is added to the harddrive, it is added to this list. From this list you can rename or delete the backup sets.

[Heading to the Backup Column](#) - the current number of backups on the harddrive is here. This is the heading to the column that tells the names of the Backup Sets.

[Backup Sets](#) - when a backup is made all of the files are put in a new subdirectory of the specified Target directory. The names of the Backup Sets and their locations are listed here.

[Full Path of Backups](#) - the location of each backup set is listed here. This setting cannot be changed.

[Rename Backups](#) - the Backups may be renamed by selecting a Backup and then either pressing the Rename button or clicking the mouse one more time. Renaming an item renames the directory.

WARNING - if you rename a backup outside of WinRescue (with the Explorer) an error will occur when running WinRescue.

Delete Backup - to delete a Backup select the Backup and then press the Delete button. This will delete the subdirectory of that Backup and all of its files.

WARNING - if you delete a Backup outside of WinRescue (by using the Explorer) an error will occur when running WinRescue.

[List of Temporary Backups](#) - an improvement over Windows95 is that Windows98 keeps backups of the five most recent registries. This box lists the numbers (for example, 000, 001, 002, etc.) and dates of the five backups.

[Delete Temporary Backup](#) - deletes the selected backup. If Windows98 tries to restore a temporary backup and finds out that it is faulty, it will label it BAD. You can delete it here or wait for its turn to be replaced by a new backup.

Default Directories - directories where configuration files are found. Some foreign versions and network setups of Windows may use different directories. This option allows the user to change the default directories. If WinRescue works, DO NOT change these settings. If the wrong directories are specified, WinRescue will not work correctly.

The directories that may be changed are:

Root
Startup
Windows
System
User

[Root Directory Setting](#) - the directory where autoexec.bat and config.sys are located.
It is usually C:.

When this button is clicked a submenu will appear with the following choices:

- Current Root Directory Setting**
- Browse**
- Default Directory**

[Current Directory Setting](#) - tells the current directory setting of the selected button. This item is for your information only, clicking on it will do nothing.

[Startup Directory Setting](#) - the location of the Startup directory. WinRescue consults the Registry for the location of the Startup directory, so this setting should not need to be changed.

When this button is clicked a submenu will appear with the following choices:

Current Startup Directory Setting
Browse
Default Directory

Browse - selecting this item will display an open dialog box. Find the needed file (except with the Startup directory where only a directory needs to be selected) on your harddrive, select it, and press Open. Press Cancel to keep the old directory.

[Default Directory](#) - clicking on this item will set the directory setting back to the default setting. This item is not enabled if the current directory setting is the same as the default setting.

[System Directory Setting](#) - the directory where system.dat is located. This is not necessarily the Windows\System directory.

When this button is clicked a submenu will appear with the following choices:

- Current System Directory Setting**
- Browse**
- Default Directory**

[User Directory Setting](#) - the directory where user.dat is located.
When this button is clicked a submenu will appear with the following choices:

- Current User Directory Setting**
- Browse**
- Default Directory**

[Windows Directory Setting](#) - the directory where win.ini is located.
When this button is clicked a submenu will appear with the following choices:

- Current Windows Directory Setting**
- Browse**
- Default Directory**

[Win98 Backup Directory Setting](#) - the directory where rb000.cab, rb001.cab, etc. are located is by default the Windowsdirectory. WinRescue 98 allows you to change this, so that Win98 puts its temporary backups wherever you designate.

When this button is clicked a submenu will appear with the following choices:

Current Backup Directory Setting

Browse

Default Directory

[Functions to Perform Regularly](#) - if one of these functions is set to something besides "Do Not Perform", a shortcut in the Startup directory will check to see if it is time to perform the function every time Windows is started.

The three functions that can be performed regularly are:

Start
Backup
RegPack

Start and Wait - at the selected interval (daily, weekly, bi-weekly, monthly, or never) WinRescue will start when Windows is started.

If you want to perform one of the other options and want WinRescue to remain open after the operation is performed, set this frequency at the same time and to the same frequency as the other operation.

Automatically Perform Backup - at the selected interval (daily, weekly, bi-weekly, monthly, or never) WinRescue will start and perform a backup when Windows is started.

If you have registered WinRescue and are not displaying the startup screen, this function will be automatically performed at the selected interval without the need for any input by you. If you want WinRescue to remain running after this operation is performed, set the "Start WinRescue 98 and Wait" function.

[Automatically Perform RegPack](#) - at the selected interval (daily, weekly, bi-weekly, monthly, or never) WinRescue will start and rebuild the Registry when Windows is started.

If you have registered WinRescue and are not displaying the startup screen, this function will be automatically performed at the selected interval without the need for any input by you. If you want WinRescue to remain running after this operation is performed, set the "Start WinRescue 98 and Wait" function.

Starts WinRescue 98.

Quits WinRescue 98.

[Do Not Show This Form](#) - when WinRescue is registered, this checkbox is enabled allowing the user to skip the startup screen.

Registration Key - when you register WinRescue, you will receive a number. Enter it in the Registration Key text box on the startup screen. Be sure to enter exactly as it is written. When you press, "Continue", WinRescue will acknowledge whether it is correct or not. If it is correct, the "Do Not Show This Form" checkbox will be enabled next time the startup screen is displayed. If the Registration Key is not correct, WinRescue will be terminated.

You may use WinRescue for 30 days by not entering a number.

[Countdown](#) - sorry. Register WinRescue and you will never see this countdown again, otherwise wait ten seconds.

WinRescue 98

WinRescue
Version 1.00 1/01/98
© Copyright 1997 by Ray Geide
Super Win Software
<http://superwin.com>
geide@superwin.com

7

**WinRescue 98 is only for Windows98.
Use WinRescue 95 for Windows95.**

See instructions to the right for registering.

Do Not Show This Form.

Enter Registration Key below:

This program is Shareware, you may evaluate it for a period of no more than 30 days. After this time you must register it by calling 1-800-242-4775 ext. 15510 or by going to <http://www.superwin.com/rescue.htm>. Registration price is \$19.95.

Failure to comply with this condition is a violation of United States and international copyright law. This program is fully functional, however registering entitles you to receive the registration key and gets rid of this nag screen. Please register.

Click on an item above to get more information.

WinRescue Features

Backs up Thirteen different files, the Start Menu, the Desktop, Favorites, and Recent items, plus any additional files that you specify.

Backs up and Restores only the files that you specify (WinRescue and Win98 Backups).

Provides FIVE different ways to restore the Registry.

Streamlines and Fixes the Registry.

Adds files to the backups made by Win98.

Makes an Emergency Bootup Diskette.

Specify Location of WinRescue and Win98 Backups.

Specify how many backups Win98 will keep.

DOS version of WinRescue 98 for Emergency Recovery.

Makes UNLIMITED backups or limit the number to 1, 3, 5, or 10.

Backs up to and restores from multiple diskettes.

Compresses backups into PKZip files.

Easy Help (just press <F1>).

[Previous Button](#) - changes the Restore Method to Restore to Previous Registry.

[Spare Button](#) - changes the Restore Method to Restore to Spare Registry.

[Backup Button](#) - displays a submenu with all the saved backups. Select one to change the Restore Method to Restore to Backup.

[Diskette Button](#) - changes the Restore Method to Restore from Diskette.

[Original Button](#) - changes the Restore Method to Restore to Original Registry.

Emergency Restore Instructions.

Just in case WinRescue 98 cannot restore Windows, here are instructions on how to do it yourself in DOS.

How to Restore the Registry in DOS

The easiest way to restore in DOS is to use the bootup diskette, that WinRescue 98 creates. There is also a DOS version of WinRescue 98 that will restore a Temporary Backup, Spare Registry, or Original Registry. It is called, **rescue.exe**. It may be found in the WinRescue 98 directory or the root directory (usually, C:). If you didn't make a bootup diskette or you can't find **rescue.exe**, you can do it the hard way outlined below.

To Get Into DOS

- Press <F8> when your computer says, "starting Windows98".
- From the list select, Safe mode command prompt only. This should be number 7.

Running **rescue.exe** in DOS

- Go to C Drive by typing, **C:<ENTER>**. (<ENTER> means to press the Enter key)
- Change to the root directory by typing, **CD\<ENTER>**.
- Run **rescue.exe** by typing, **rescue<ENTER>**.
- In the DOS version of WinRescue 98 choose the second option, Spare Registry..

If the DOS version Doesn't Work:

- Go to the Windows Directory
- Change drives by typing the drive letter, colon [:], and <ENTER>.
- Change to the root directory by typing, **CD\<ENTER>**.
- Change to directories by typing, **CD**, the name of the directory, and <ENTER>.
- Find out what is in a directory by typing, **DIR<ENTER>**.
- Type the Following Commands to Restore the Registry to the Spare Registry (produced by WinRescue 98 when you make a backup)
 - command\attrib -h -r -s user.dat<ENTER>** (if this produces an error, you need to find out where attrib.exe is and type that location instead of command\attrib)
 - command\attrib -h -r -s system.dat<ENTER>**
 - command\attrib -h -r -s user.ray<ENTER>**
 - command\attrib -h -r -s system.ray<ENTER>**
 - copy system.ray system.dat<ENTER>**
 - copy user.ray user.dat<ENTER>**
 - exit or win** (to start Windows98)

Moves the WinRescue 98 window when the left mouse button is held down and moved.

Minimizes the WinRescue 98 window.

Exits WinRescue 98.

[RegPack Button](#) - press the "RegPack" button to fix and rebuild Windows98's Registry. It is recommended to do this at regular intervals. Without RegPack, no matter how many changes you make to the Registry, it will never become smaller. The changes that are made become excess mush in the Registry that is only removed with RegPack. It also corrects some problems and causes Windows98 to run smoother.

Restore Button - press the "Restore . . ." button to restore Windows98's configuration to a previous configuration. This is achieved by copying previously saved configuration files back to the configuration files. Exactly which files will be used depends on the Files Settings.

Help Button - press the "Help" button to display Help.
<F1> may be pressed at anytime to display help relevant to the active control.

Setup Button - press the "Setup" button to display the Setup and Preferences window.

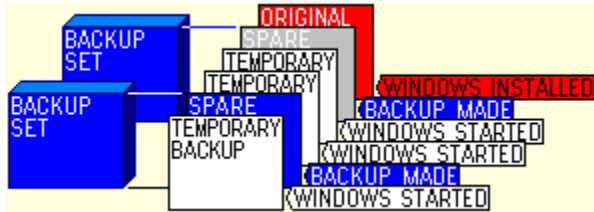
[Setup Listbox](#) - double click on one of the items in the list box to display its corresponding settings. The following items are available in the listbox:

- Number of Backups**
- Backup to Diskette**
- Backup Target**
- Compress Backups**
- Which Registry**
- Method of Restore**
- Default Directories**
- Auto Start Frequency**
- Auto Backup Frequency**
- Auto RegPack Frequency**
- Number of Temporary Backups**
- Delete Backups**
- Rename Backups**
- Temporary Backups**
- Permanent Backups**
- Files to Backup and Restore**

Which Restore Option to Use

There are five Restore Options to choose from: Original, Backup Set, Diskette, Spare, and Temporary.

The chart below shows the different types of backups and when each are made.



Choosing which option to use may seem overwhelming. Here is my advice:

It is best to run WinRescue 98 in Windows 98 than in DOS.

In Windows 98:

Use Temporary if . . .

- you want to restore the Registry or other System Files.

Use Backup or Diskette if . . .

- you have backed up since starting Windows.
- you want to restore the Start Menu, Desktop, Favorites, Recent items, or a file not in the Temporary

Backup (these are files outside of the root directory or Windows directory).

- you have tried all of the Temporary Backups and they don't work (highly unlikely).
- you want to make a full restore.
- you want to go back to a certain previously saved configuration.

Use Spare if . . .

- you have deleted all of the Backup Sets and Temporary doesn't work.

Use Original if . . .

- nothing else works.

In DOS:

Backup and Diskette are not available in the DOS version. You can always use one of the other options to get into Windows 98, and then perform a Backup or Diskette Restore.

Temporary - when Windows98 is started it checks to see if the registry is good. If it thinks that the registry is good, it makes a copy and puts it in the Temporary position. Windows98 keeps five of the most recent Temporary backups (this number may be changed in the Miscellaneous Preferences). The problem is that Windows98 doesn't always detect a corrupt registry and so sometimes the Temporary registry may be bad. When Windows98 detects that a Temporary registry is bad, it will relabel it as BAD.

Spare - every time WinRescue 98 performs a Backup it places a spare copy of the registry in the Windows directory. So the Spare registry is a copy of the registry when it was last backed up. Note - the Spare option only restores the registry and not the other configuration files backed up by WinRescue 98.

Backup Set - WinRescue 98 backs up all the files checked in the Files section. These are put in a subdirectory of the specified Target directory. Backup Sets cannot be restored in the DOS version of WinRescue 98.

Diskette - this is the same as the Backup Set except that the specified files are compressed onto a diskette. If the files are too big to fit on one diskette, they will be spanned onto as many diskettes as needed. Diskette Backups cannot be restored in the DOS version of WinRescue 98. If you cannot get into Windows98, you must use one of the other Restore options. Then when you get into Windows98, you can use this Restore option.

Original - Windows98 saves a copy of the Original registry. This option will start Windows98 at the very beginning. Windows98 will ask all of the initiation questions. You should never have to use this Restore option.

WinRescue 98 Tutorial

1. Welcome to WinRescue 98

WinRescue is one of the first and best Windows Recovery programs. Features, like RegPack, put WinRescue 98 at the top of its class. This tutorial will acquaint you with the major features. Consult [Help](#) for more information.

Begin by clicking on the "Change Backup Preferences" button.

(New features with this version are in red.)

[Next>>](#)

2. Backup and Restore Preferences ([more info](#))

Set the number of backups to keep on the hard drive or diskette in the "Backup to:" dropdown box.

If you don't want the backups placed in the default directory, change the "Target" setting.

Choose the default Restore method (this can be changed before restoring).

Click on the "Miscellaneous" tab.

[Next>>](#)

3. Miscellaneous ([more info](#))

The default directories should not have to be changed (if, during a backup, files cannot be found, check these settings).

If you want WinRescue to start up and perform a task automatically, specify the appropriate time interval under "Actions to Perform Regularly".

Backups do not need to be performed as often as before, because WinRescue causes Win98 to temporarily backup desired files every day when Win98 is started (you will not see this happening).

Click on the "Files" tab.

Next>>

4. Files ([more info](#))

Decide and mark which files you want to backup and restore. You can add any other files that you want backed up and restored.

The Start Menu, Desktop, Favorites, and Recent are not be backed up in Win98 temporary backups. They are backed up in WinRescue backup sets only.

Click on OK.

[Next>>](#)

5. Backup ([more info](#))

If Win98 is running correctly, now is a good time to make a backup. Click on the big Backup button.

If you are having problems with the Registry, try going to [RegPack](#).

[Click on the "Boot Disk" tab.](#)

[Next>>](#)

6. **Boot Disk** ([more info](#))

Click on the big "Boot Disk" button to make an emergency boot diskette. Follow the instructions. Note that the DOS part will not be done until it asks if you want to format another diskette. Answer No and the process will continue.

Once you have made a boot diskette, turn off the computer, insert the diskette, and start the computer.

If the DOS version of WinRescue 98 comes on, then the diskette is good. Save it for an emergency.

If it doesn't work, the diskette may be bad. Try making another diskette.

Remove the diskette from the drive and restart Win98.

[Click on the RegPack tab.](#)

[Next>>](#)

7. **RegPack** ([more info](#))

Click on the big "RegPack" button. Win98 will restart and the Registry will be rebuilt. This will remove errors and excess from the Registry. The Registry will end up smaller and more efficient.

To check the Registry for errors, click on the "Check Registry" button.

[Click on the "Restore" tab.](#)

[Next>>](#)

8. Restore ([more info](#))

I brought you here so that you could see where to go if you have a Win98 crash. If Win98 crashes, try to get in Window's Safe Mode and run WinRescue 98. If you can't get into Windows, run rescue.exe from DOS (it is located in the root directory and WinRescue's directory) or use the WinRescue 98 boot up diskette.

This ends your tutorial. For more information, see Help.

Frequently Asked Questions

Question - How do I update WinRescue 98?

Answer - Whether you are a registered user or not, updating is the same. Go to <http://superwin.com/frescue.htm> and download the shareware version. When the shareware version is run it will be registered for registered users.

When you enter the registration key, WinRescue hides it on your hard drive and later versions find it and use it. So unless you erase your hard drive, you should only have to enter the registration key once.

Question - Isn't WinRescue 98 just an update of WinRescue 95?

Answer - I wish it was, but although they may look alike, inside WinRescue 95 and WinRescue 98 are two different programs. WinRescue 95 is for Win95, Win96, and Win97 and WinRescue 98 is for Win98. This is because (thanks, to the folks at Microsoft) Win98 must be restored differently than Win95.

WinRescue 95 will not work with Win98 and WinRescue 98 will not work with Win95, Win96, and Win97.

We will be offering WinRescue 98 for \$10 to registered users of WinRescue 95 in the near future.

Question - When I attempt to create a boot disk, it hangs at the end of the format.

Answer - The answer to this problem comes from Douglas Grace (thank you Douglas). "I am using an older version (original) of NortonAntiVirus for 95 with auto protect enabled. This appears to be the problem. The format starts and runs. When it gets to the load system to the floppy it hangs when asked to allow format to write to the floppy with permission from NAV95 even though Continue option is chosen. This is not a problem with your software. I suggest you instruct users to disable NAV while creating the floppy. It will and does hang-up the entire system which required a power down shutdown to get going again. I attempted this twice before disabling NAV and then it worked fine.

Respectfully,

Douglas Grace

Ex Nihilo

<http://www.pro-site.com>

Question - What is your postal address for ordering.

Answer - Our address for ordering is:

Super Win Software

811 W. 17th. St.

Hutchinson, KS

67501

For more ordering information go to <http://superwin.com/order3.htm>.

Question - Where do I enter the registration key?

Answer - Version 6 started using the key. If you have an earlier version, you need to download the latest shareware version from our website at <http://superwin.com/rescue.htm>. Enter the registration key on the startup screen (the screen that has the countdown from 10). The key must be entered exactly as it is given.

Question - How do I uninstall the old version?

Answer - If the old version has an uninstall option in the setup program, use it. Be sure not to delete user.ray and system.ray.

If the old version doesn't have an uninstall option, remove the following files:

Delete everything in the old version directory.

In Windows directory, delete the following files that have endings of .ra0, .ra1, .ra2, etc., and .ca0, .ca1, .ca2, etc.

- system
- user
- start
- win
- sys

DO NOT delete user.dat, user.da0, user.ray, system.dat, system.da0, system.ray, win.ini, or system.ini

In the Windows System directory, delete rescue95.ini

In the Root directory (usually c:, delete the following files that have endings of .ra0, .ra1, .ra2, etc., and .ca0, .ca1, .ca2, etc.

- autoexec
- config

DO NOT delete autoexec.bat or config.sys.

In the Startup directory, delete rescuest.exe

Go to Start - Settings - Taskbar and remove the old version from the Start Menu.

Question - After doing a backup I received a message that certain files could not be copied?

Answer - The problem is that WinRescue could not find these files. There are two reasons why WinRescue may not be able to find these files. 1) because the wrong directory is specified in the Default Directories section of Misc. Settings. Check these setting and make sure that they are correct. 2) because these files do not exist (this may also be true if the file is 0kb). Windows98 uses but does not need some of the files (like, autoexec.bat config.sys shelliconcache) that WinRescue backs up. You can select not to backup and restore individual files in the Files section of Preferences.

Note - system.dat and user.dat must be backed up.

