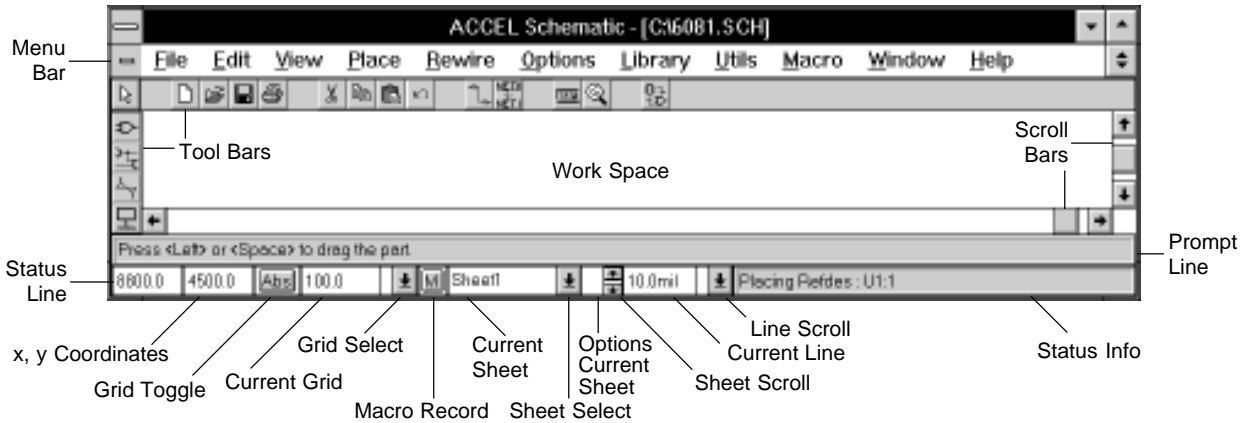
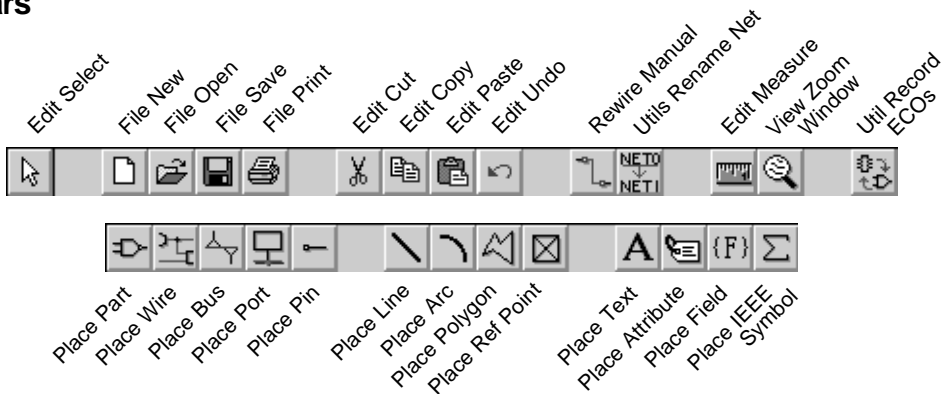


ACCEL Schematic Quick Reference



Tool Bars



Keyboard Shortcuts (Default)

F1 — Help	L — Cycles forward through the sheets
Shift + F4 — Tile	Shift + L — Cycles backward through the sheets
Alt + mouse click — Enables freehand drag	M — Starts or stops the macro recorder
Arrow keys — Moves cursor	Ctrl + N — File New
Shift + arrow — Moves cursor 10 grid points	O — Cycles forward through orthogonal modes
Backspace — Unwind	Shift + O — Cycles backward through orthogonal modes
Ctrl + mouse — Multiple select	Ctrl + O — File Open
Del — Deletes selected objects	P — Increases the part number (if in Place Part)
Esc — Mouse cancel	P — Port style toggle (if in Place Port)
Shift + mouse — Sub select	Shift + P — Decreases the part number (if in Place Part)
Spacebar — Left mouse button	Ctrl + P — File Print
(+) — Zoom in	Q — Draft mode toggle
(-) or (=) — Zoom out	R — Rotates objects 90 degrees
A — Grid toggle	S — Edit Select
B — Bus connection mode toggle	Ctrl + S — File Save
C — Zoom Center	Ctrl + Z or U — Edit Undo
Ctrl + C — Edit Copy	Ctrl + V — Edit Paste
D — Increases the Ref Des (if in Place Part)	W — Line width next
Shift + D — Decreases the Ref Des (if in Place Part)	Shift + W — Line width previous
E — Executes temporary macro	X — Cursor style toggle
F — Flips objects/toggles ortho mode pairs	Ctrl + X — Edit Cut
G — Cycles forward through the grids	Y — Options sheet
Shift + G — Cycles backwards through the grids	Z — Zoom Window
J — Enter Coordinate	

ACCEL EDA Procedures Summary

SCHEMATIC

- SELECT** There are three ways to access Select mode: Left-click the Select icon in the Toolbar, run Edit Select or press the *S* key. *Shift* select sub selects and *Ctrl* extends selection. To single select: Left-click on a single object or press the spacebar twice.
- MULTIPLE SELECTS** To multiple select: *Ctrl*-left-click on additional objects to add them to the current selection. To block select: Left-click and drag to form a block around a group of objects. Items can be included or excluded using option block selection. To toggle through co-located objects: Spacebar multiple times without moving mouse.
- DESELECT** To deselect, left-click in any clear area of the workspace which is outside of the selection region or run the Edit Deselect All command. To deselect individual objects from a multiple select: *Ctrl*-left click on the object.
- SUB SELECT** To sub select: *Shift*-left click on a pin, wirename, or attribute. Run Edit Properties to change, move, rotate and/or change pin characteristics; to move, rotate and/or change the value and text styles of attributes; and to move, rotate and/or change the wirename.
- DESELECT** To deselect, left-click in any clear area of the workspace which is outside of the selection region or run the Edit Deselect All command. To deselect individual objects from a multiple select: *Ctrl*-left click on the object.
- ALIGN PARTS** Select one or more parts. Choose a Selection Point if desired. Run Edit Align Parts.
- COPY** Select one or more objects. Run Edit Copy (*Ctrl-C*) followed by Edit Paste (*Ctrl-V*); or *Ctrl*-left-click in the selection region then drag to the desired location and release. To copy one or more objects from one sheet to another or from one design to another, run Edit Copy. Change to the desired sheet or design file, then run Edit Paste.
- DELETE** Select one or more objects. Press the *DEL* key; run Edit Delete; or right-click to display the pop-up menu and choose Delete.
- DUPLICATE** Select one or more objects. Run Edit Copy Matrix.
- FLIP** Select one or more objects. Press the *F* key to flip.
- GLOBAL EDIT** To globally change text that is associated with pins (pin name and pin designator), parts (ref des, type, value) or wires (wirename), run Options Text Style. Choose the appropriate style, change the height, thickness and font, then click OK.
- HIGHLIGHT NETS** Net objects are junctions, ports, bus entries and wires. To Highlight, run Edit Nets. Choose one or more nets from the list box and click the Highlight button; or select one or more net objects, right-click to display the pop-up menu and choose Select Net. Right-click again and choose Highlight. To Unhighlight, run Edit Nets. Choose one or more nets from the list box and click the Unhighlight button; or select one or more net objects, right-click to display the pop-up menu and choose Select Net. Right-click again and choose Unhighlight. To Unhighlight the entire design, run Edit Unhighlight All.
- PROPERTIES** To make changes to an object (size, shape, width, etc.), select one or more objects of the same type. Run Edit Properties; or right-click to display the pop-up menu and choose Properties. Double click displays properties for a selected item.

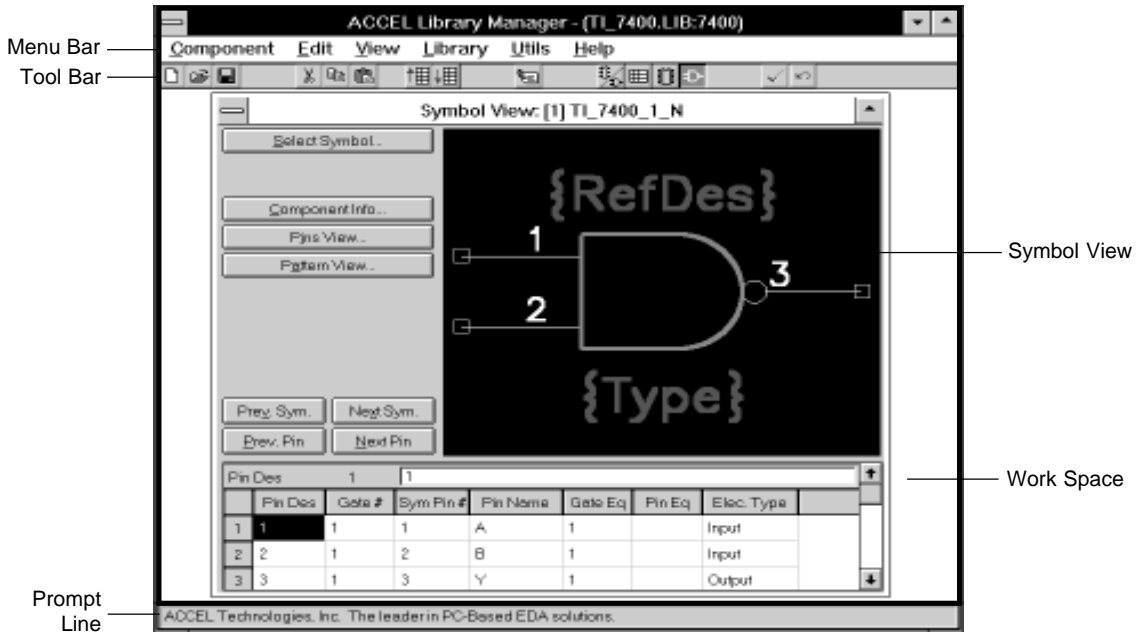
ACCEL EDA Procedures Summary

- MOVE** Select one or more objects. Left-click in the selection region, then drag to the desired location and release; or *Alt*-left-click in the selection region, then drag to the desired location (you don't need to hold down the left mouse button while dragging) and left-click to finish; or press the spacebar once with the cursor in the selection region, drag to the desired location, and left-click or press the spacebar to finish. To move an object from one sheet to another or from one design to another, select one or more objects. Run Edit Cut, then change to another sheet or design file, then run Edit Paste.
- PLACE** Select the object to be placed from the Place menu or the Toolbar. Left-click in the workspace to begin placement.
- RENAME NET** Run Utils Rename Net. Left-click on the first net to be renamed and fill in the resulting dialog with a new name and chosen options. Left-click to select the net(s) to be renamed. If Increment Netname is enabled, the netname is automatically incremented with each subsequent left-click. Use the Contiguous Wire option to rename one subnet of a global net. Otherwise all subnets of the net are renamed.
- RENUMBER** There are two types of Renumber: Ref Des and Pin Num. Ref Des: Run Utils Renumber. Select Ref Des. All Ref Des will be renumbered automatically from Top to Bottom or Left to Right. Select Auto Group Parts or Keep Parts Together. Indicate the Starting Number and Increment Value. Pin Num: Select a pin or group of pins. Run Utils Renumber. Select Pin Num. It is a manual operation. Indicate the Starting Number and Increment Value. Click on each pin to assign a pin number. As each pin highlights, the pin number is assigned.
- RESIZE** Objects that can be resized are arcs, buses, lines, polygons and wires. Select a single object. Left-click over a handle and drag to resize. To resize text, select one or more text objects. Run Edit Properties; or right-click to display the pop-up menu and choose Properties.
- REWIRE** Reroute and modify wires by selecting the Rewire Manual tool either by menu selection or by selecting the new toolbar icon, and then selecting a wire segment.
- ROTATE** Select one or more objects. Press the *R* key to rotate in 90 degree increments.
- SELECTION POINT** Select one or more objects, right-click to display the pop-up menu and choose Selection Point. Click-left to locate the point, used as a point of reference for subsequent editing operations.
- UNDO** There are four ways to perform an Undo: Click the Undo icon on the Toolbar; press *Ctrl+Z*; Press *U*; or run Edit Undo.
- UNWIND** During placement, you can "unwind" buses, lines, polygons and wires by pressing the *backspace* key.

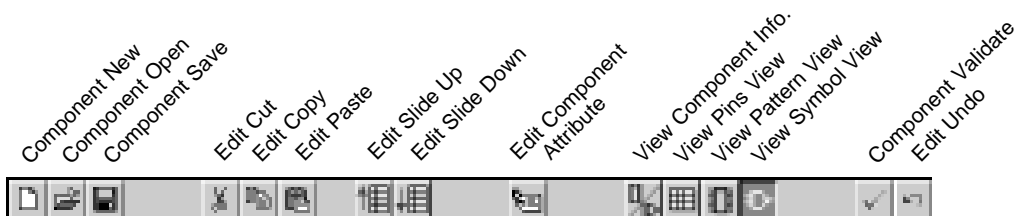
LIBRARY MANAGER

- TRANSLATE** To translate Tango-PCB Series II, Tango-Schematic Series II, Schema and/or PDIF libraries into ACCEL libraries, run Library Translate.
- MERGE PATTERN** To copy patterns from an ACCEL library containing patterns into an ACCEL library that contains no patterns to make a complete integrated library, run Library Merge Patterns.
- LIBRARY QUERY** To obtain detailed information about a library, use the Library Query Command.

ACCEL Library Manager Quick Reference



Tool Bar



Keyboard Shortcuts (Default)

Arrow keys	— Moves pointer
End	— Moves to the end
Enter	— Accepts edit and moves to next cell
Home	— Moves to the beginning
Tab	— Moves forward through cells
Shift + Tab	— Moves backward through cells
F1	— Help
Alt + F4	— Component Exit
Ctrl + C	— Edit Copy
Ctrl + K	— Component Validate
Ctrl + N	— Component New
Ctrl + O	— Component Open
Ctrl + S	— Component Save
Ctrl + U	— Undo
Ctrl + V	— Edit Paste
Ctrl + X	— Edit Cut
Ctrl + Up	— Slide selection up
Ctrl + Down	— Slide selection down
Page Up	— Scroll up
Page Down	— Scroll down