

Safety Scan Help

The following Help Topics are available:

[Ordering Information](#)

[Installation](#)

[Loading SafetyScan automatically at the start of Windows](#)

[Overview](#)

[Operation](#)

[30 Day License](#)

For Help on Help, Press F1

Installation

SafetyScan comes with two files, safescan.exe, and sscan.hlp. Create a new directory for these files and move them both into it.

To run SafetyScan, double click on the file called safescan.exe.

To create a shortcut to this file in your Start->Programs Menu:

1. Launch Explorer and find the file safescan.exe
2. Right click on the Windows 95 Start Button and select Open.
3. Double Click on Programs.
4. With the right mouse button, drag the safescan.exe file into the Programs window, and select Create Shortcut Here. You may rename the shortcut to SafetyScan if you wish.
5. You may now launch SafetyScan by clicking Start>Programs>SafetyScan.

Ordering Information

SafetyScan is available for \$29.95 (US) from Unisyn.

Payment methods are:

MasterCard, Visa, American Express.

Company checks are accepted. Product is sent upon receipt of check.

Company Purchase Orders are accepted for orders of more than \$100.00 (US). Payment must be net-15.

The fastest and most convenient way to order SafetyScan is through the use of Unisyns **Secure On-Line Order Form**, located on our Web Site at <http://www.unisyn.com>. This order form is securely encrypted, and your credit card and personal information will remain private during transfer and processing. Compuserve users may use the SWREG service, ID#12767. Most orders that are processed by this means are sent the same day.

You may also order by faxing us your name, company name, address, and telephone number along with a credit card number for payment. Please specify whether you would like the software sent via e-mail, or postal mail. Additional charges of 6.00 for US orders, and 12.50 for International orders apply if postal shipment is requested. E-Mail orders are usually sent the same day of receipt.

If you would like to print an order form, click [here](#).

Site license discounts and reseller terms are available. For more information, contact Unisyn.

To order, contact Unisyn at:

Sales: (818)951-8284

FAX: (818)951-8384

eMail: sscan@unisyn.com

CIS: 74667,3166

AOL: unisynsw

Web: <http://www.unisyn.com>

Overview

SafetyScan operates by regularly scanning your hard drive for various error producing files and then optionally cleaning them from your system for you.

SafetyScan targets specific types of error producing files that common disk utilities, un-install, defrag, scandisk, and sweep type programs will miss.

The error files that SafetyScan searches for and deletes can produce very hazardous results if not properly cleaned from your drive on a periodical basis.

The symptoms that these error files can produce include:

- Lost network and Internet connections.

- Mysterious application lock ups.

- Lost data

- Unexplainable General Protection Faults (GPFs) or Fatal Errors in your applications.

- Virus like behavior

- Mysterious Reboots

These error files accumulate over time, occupying megabytes of space on your hard drive. SafetyScan will clean these files and recover the lost space from your system. Regular use of SafetyScan will prevent these files from accumulating and wasting valuable disk space.

SafetyScan stays out of the way and is very easy to use. It sits quietly in your Windows 95 System Tray, scanning for and cleaning error files on a scheduled basis.

The only thing you will notice is less problems with your computer and more hard drive space!

Operation

SafetyScan is very simple and easy to operate. It resides in the Windows 95 System Tray (usually the lower right corner of the screen with the small icons) and may be accessed by Right-Clicking on the magnifying glass icon, and selecting Open.

There are two tabbed sections of the application: The **Main Tab** and the **Options Tab**.

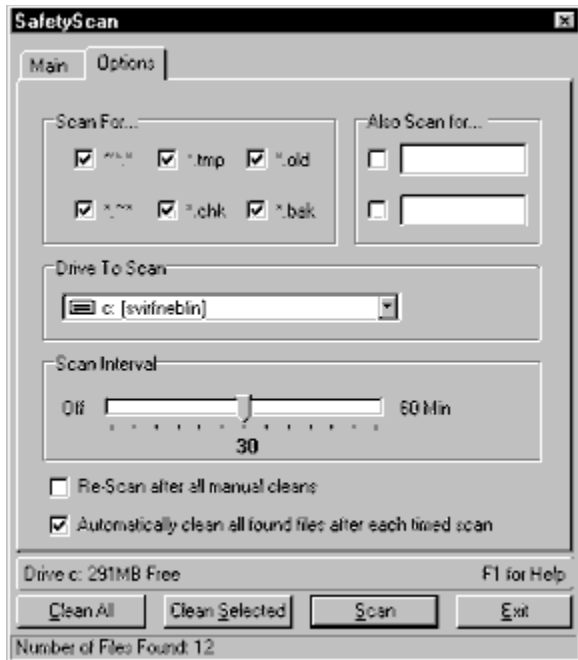


The Main Tab

This displays the files that SafetyScan finds when it scans. You may select only some of these files for deletion by using the <Shift> and <CTRL> keys with the mouse to select individual files, and then clean them using the Clean Selected button, or you may use the Clean All button to clean all displayed files from your system.

The Scan button allows you to manually scan for error files at any time. If the SafetyScan window is not minimized in the System Tray, SafetyScan will not automatically scan for files.

Note: SafetyScan will attempt to not delete files that are locked by your system or are tagged as read-only files. Files that are cleaned are permanently deleted.



The Options Tab

This displays the configuration options for SafetyScan. They are:

- 1. Scan For...:** These checkboxes allow you to choose which of the most common error producing files to scan for. These are the filters that SafetyScan will use in order to filter out the error files from your hard drive.
- 2. Also Scan For...:** These two spaces allow the advanced user to set two custom filters for SafetyScan to use when determining which files are error files.
Be careful !! These custom filters can do damage to your system if not used properly and should only be used by an individual with a good knowledge of such filters!! Unisyn cannot take any responsibility for misuse of this option.
- 3. Drive to Scan:** Use this to select the drive that SafetyScan will scan and clean files from.
- 4. Scan Interval:** Use this to set the interval that SafetyScan scans your system for error files. It can be from every minute to every hour. Sliding this all the way to the left will disable automatic scanning.
- 5. Re-Scan after all manual cleans:** Select this option if you would like SafetyScan to re-scan for errors each time you **manually** clean your drive. Leaving this option unchecked can save time.
- 6. Automatically clean all found files after each timed scan:** Select this option if you would like SafetyScan to automatically delete the files that it finds when scanning in the background automatically.

30 Day License

This version of SafetyScan is released as shareware. You may evaluate SafetyScan on your system at no charge for 30 days. If after 30 days you decide to keep it, you must register your copy with Unisyn. For information on registering SafetyScan, see [Ordering Informaion](#).

LICENSE AGREEMENT

UNISYN DISCLAIMS ALL WARRANTIES, EITHER EXPRESSED OR IMPLIED, INCLUDING, BUT NOT LIMITED TO IMPLIED WARRANTIES OF MERCHANTABILITY AND FITNESS FOR A PARTICULAR PURPOSE, WITH RESPECT TO THE SOFTWARE OR DOCUMENTATION. SHOULD THE PROGRAM PROVE DEFECTIVE, THE PURCHASER ASSUMES THE RISK OF PAYING THE ENTIRE COST OF ALL NECESSARY SERVICING, REPAIR, OR CORRECTION AND ANY INCIDENTAL, SPECIAL, OR CONSEQUENTIAL DAMAGES. IN NO EVENT WILL UNISYN BE LIABLE FOR ANY DAMAGES WHATSOEVER (INCLUDING WITHOUT LIMITATION TO DAMAGES FOR LOSS OF BUSINESS PROFITS, BUSINESS INTERRUPTION, LOSS OF BUSINESS INFORMATION AND THE LIKE) ARISING OUT OF THE USE OR THE INABILITY TO USE THIS PRODUCT EVEN IF UNISYN HAS BEEN ADVISED OF THE POSSIBILITY OF SUCH DAMAGES. IN PARTICULAR, UNISYN SHALL HAVE NO LIABILITY FOR ANY DATA STORED OR PROCESSED WITH THIS SOFTWARE, INCLUDING THE COSTS OF RECOVERING SUCH DATA. AS A RESULT, THIS SOFTWARE AND DOCUMENTATION ARE LICENSED AS IS AND YOU, THE LICENSEE, ARE ASSUMING THE ENTIRE RISK AS TO ITS QUALITY AND PERFORMANCE.

Information in this document is subject to change without notice and does not represent a commitment on the part of Unisyn. The software described in this document is furnished under this license agreement. The software may be used or copied only under the terms of the agreement. It is against the law to copy the software on any medium except as specifically allowed in the license agreement.

Use of this product for any period of time constitutes your acceptance of this agreement and subjects you to its contents.

US GOVERNMENT RESTRICTED RIGHTS

Use, duplication, or disclosure by the Government is subject to restrictions as set forth in subdivision (b)(3)(ii) of the Rights in Technical Data and Computer Software clause at 25 2.227-7013. Contractor / manufacturer is

UNISYN
7667 Hillrose Ave
Tujunga, CA 91042

Copyright and Trademark Acknowledgments

The SafetyScan software, the contents of this help file, and the Unisyn logo are trademarks of Unisyn Corporation.

Windows, Windows 95 Windows NT are trademarks of Microsoft Corporation.

Loading SafetyScan automatically at the start of Windows

We recommend placing SafetyScan in your StartUp group so that it is automatically loaded each time you start Windows. To do this:

1. Launch Explorer and find the file safescan.exe
2. Right click on the Windows 95 Start Button and select Open.
3. Double Click on Programs.
4. Double Click on StartUp.
5. With the right mouse button, drag the safescan.exe file into the StartUp window, and select Create Shortcut Here. You may rename the shortcut to SafetyScan if you wish.
6. SafetyScan will automatically be loaded each time Windows starts now, keeping your system in top shape all of the time!

Unisyn Order Form

You may use this order form for faxing or mailing orders for SafetyScan. To print this form, select File>Print Topic

Fax To: 1(818)951-8384 or Call Unisyn at 1(818)951-8284

Company Name: _____ Your Name: _____

Phone Number: _____ FAX Number: _____

Address: _____

E-Mail Address: _____

Where did you hear about SafetyScan? _____

YES Please send me SafetyScan.

I have the demo and only need a registration code.

Number of Users:

1-4.....\$29.95 per user

5-24.....\$18.95 per user

25-49.....\$15.95 per user

50-99.....\$13.95 per user

100-249....\$11.95 per user

250-999....\$8.95 per user

10000+.....Contact Unisyn

Number of Users: _____

I would like to pay with

Mastercard

Visa

American Express

Credit Card Number: _____

Exp.: _____

C.O.D. (Add 15.00)

Shipping Preference Overnight Add \$20.00 USA Only

Second Day Add \$10.50 USA, Canada : Add \$20.00

Priority (3-4 days) Add \$6.00 for USA, 12.50 for Canada, others add \$15.00.

E-Mail (No Charge) - Address: _____

Please allow 24 hours for order processing.

Checks or money orders are accepted if a copy is faxed with this order form. Product will be shipped upon arrival of the check or money order.

Corporate purchase orders are accepted only with a purchase of \$100.00 or more.

Orders are processed Monday through Friday. Please allow 24 hours for order processing.

Please FAX to **(818) 951-8384**. Or mail to 7034 Summitrose St. Tujunga, CA 91042

