

Welcome to Calypso for Windows 95!

This is a shareware version of Calypso for Windows 95. It provides advanced, flexible and powerful file management and replaces a raft of utilities and tools.

Why did we make it?

The answer is simple: Because nobody else made a file manager that would absolutely suit OUR everyday needs. We wanted the functionality of Windows 95 Explorer, the simplicity of Norton Commander and XTree Gold clones, long and short filenames, support for huge disk media (over 2 Gb on NTFS and FAT32), configurability, multithreading capabilities and ease of use in **ONE** program. Since that hasn't been done yet, we had to do it. But - most important of all - we enjoyed writing it and enjoy using it every day. We have absolutely no doubt that it will become your favorite too.

Important! Please read the [Software License Agreement](#) before using this software.

See [Purchasing a permanent usage license](#) , [Tech Support](#) and [Order Form](#) for more information.

If you are new to *Calypso* see: [Program usage](#)

Check our download page for newest shareware version of *Calypso for Windows 95 and NT 4.0*, updated Help file and other goodies:

 <http://www.sight-sound.si/calypso/download.html>

Software License Agreement

This is Shareware version of Calypso for Windows 95. You are hereby licensed to: use the Shareware version for a 30 day evaluation period; make as many copies of the Shareware version as you wish; give exact copies of the original Shareware version to anyone; and distribute the Shareware version of *Calypso* in its unmodified form via electronic means. There is no charge for any of the above. In order for you to maintain the right of uninterrupted use of *Calypso* after the trial period, you must register permanent usage of the program and pay the appropriate fee.

Permanent Usage License Agreement

One permanent usage license is valid for use on single workstation by one or multiple people. You are not allowed to distribute either the registration code or the registration key file.

See [Purchasing a Registered Version of Calypso](#) , [Tech Support](#) and [Order Form](#) for more information.

Disclaimer of Warranty

CALYPSO AND THE ACCOMPANYING FILES ARE SOLD "AS-IS" AND WITHOUT WARRANTIES AS TO PERFORMANCE OF MERCHANTABILITY OR ANY OTHER WARRANTIES WHETHER EXPRESSED OR IMPLIED.

Because of the various hardware and software environments into which *Calypso* may be put, **NO WARRANTY OF FITNESS FOR A PARTICULAR PURPOSE IS OFFERED.**

If you have any questions in regard to this Agreement or if you wish to reach Sight&Sound for any other reason, please contact us on the Internet for fastest response.

E-mail:  info@sight-sound.si

 <http://www.sight-sound.si>

Purchasing a permanent usage license

During your evaluation of *Calypso* you have been using a Shareware license (Evaluation license) which entitles you to use *Calypso* for 30 days while you evaluate its usefulness. If you continue using it after this trial period you are required to pay for continued use of the program. If you feel that *Calypso* doesn't meet your needs, or for any reason you decide that you don't want to register the program, you are required to discontinue using it and to delete it from your computer and storage devices. This is the ultimate "*Try Before You Buy*" marketing strategy. For more information on this marketing principle, see: [Shareware Marketing - What is it?](#) and [Order Form](#).

When you register *Calypso* you are entitled to continue using the product and the registration code restores full functionality to any disabled functions. You will also receive the latest version on diskette (or via e-mail) and access to technical support. Also, the (somewhat annoying) Registration Reminder screens will no longer be displayed.

For companies we have major discounts for additional licenses. When ordering several licenses be sure to include all station registration names as the registration code is valid only for a specific workstation.

Prices (valid thru December 1997, all in US Dollars):

single computer license	\$59.95
additional licenses (2-10)	\$34.95
additional licenses (11-25)	\$24.95
additional licenses (26-100)	\$19.95
additional licenses (101-)	\$9.95
Shipping and handling	\$5.00

(Example: License for 40 computers: \$59.95 + 39 x \$19.95 + \$5 = \$843)

Please include bank confirmation of the money transfer when sending your order. You are also required to cover all the costs of money transfer. You can also send cash (at your own risk) in certified mail (banknotes only - no coins, please!).

For payments with Visa, Mastercard, American Express and other credit cards contact us for further details. You can also register on-line on Internet. Contact us for further information or check our Web site for links.

WWW:  <http://www.sight-sound.si/calypso/calmain.htm>

NOTICE: Continued use of the unregistered version of *Calypso* past the 30 day evaluation period is a violation of international copyright laws as is the violation of registration with invalid and illegal registration codes.

Shareware marketing - What is it?

DEFINITION OF SHAREWARE - Provided by the Association of Shareware Professionals (ASP)

Shareware distribution gives users a chance to try software before buying it. If you try a Shareware program and continue using it, you are expected to register. Individual programs differ on details -- some request registration while others require it, some specify a maximum trial period. With registration, you get anything from the simple right to continue using the software to an updated program with printed manual.

Copyright laws apply to both Shareware and commercial software, and the copyright holder retains all rights, with a few specific exceptions as stated below. Shareware authors are accomplished programmers, just like commercial authors, and the programs are of comparable quality. (In both cases, there are good programs and bad ones!) The main difference is in the method of distribution. With shareware, the author specifically grants the right to copy and distribute the software, either to all and sundry or to a specific group. For example, some authors require written permission before a commercial disk vendor may copy their Shareware.

Shareware is a distribution method, not a type of software. You should find software that suits your needs and pocketbook, whether it's commercial or Shareware. The Shareware system makes fitting your needs easier, because you can try before you buy. And because the overhead is low, prices are low also. Shareware has the ultimate money-back guarantee - if a program doesn't meet your needs, you don't pay for it.

Calypso is a "shareware program" and is provided at no charge to the user for evaluation. Feel free to share it with your friends, but please do not give it away altered or as part of another system. The essence of "user-supported" software is to provide personal computer users with quality software without high prices, and yet to provide incentive for programmers to continue to develop new products. If you find this program useful and find that you are using *Calypso* after a reasonable trial period (30 days), you must make a registration payment of \$59.95 to the authors or discontinue using it.

You are encouraged to pass a shareware copy of *Calypso* along to your friends for evaluation. Please encourage them to register their copy if they find that they can use it. No one may distribute a partial or altered copy of *Calypso*. It is also not allowed to distribute the registration key. If you don't have a complete copy, you should obtain another copy from a reliable source, preferably our WWW site, from major FTP sites or another mainstream source such as CompuServe. Or you may contact us directly.

This definition of Shareware is based upon a shareware definition that was provided by the Association of Software Professionals.

Tech Support

For tech support, please send your questions by e-mail, fax, or mail to:

Sight & Sound Slovenia

Kamniska g. 11, 2351 KAMNICA, Slovenia, Europe

Tel/Fax: +386 62 622 044, 621 161

Attn.: Tech Support/Calypso for Windows 95

E-mail:  info@sight-sound.si

WWW:  <http://www.sight-sound.si>

See also: [Trademark Information](#)

[Copyright Information](#)

Order Form

We have provided this order form for your convenience. It is not mandatory to use it. To print out this order form, please click the Print button shown on the screen.

Mail this form along with your cash or payment confirmation to:

Sight & Sound Slovenia

Kamniska g. 11
SI-2351 KAMNICA
SLOVENIA
EUROPE

or you can fax it to: +386 62 622 044.

Upon receipt of your order and payment, we will send you the most recent version of *Calypso* and the registration code by mail. If you prefer faster delivery, we can send you the same with e-mail. For that you need to specify e-mail address that we can use. For e-mail deliveries shipping and handling costs are **not** charged.

Prices (valid thru December 1997, all in US Dollars):

single computer license	\$59.95
additional licenses (2-10)	\$34.95
additional licenses (11-25)	\$24.95
additional licenses (26-100)	\$19.95
additional licenses (101-)	\$9.95
Shipping and handling	\$5.00

(Example: License for 40 computers: \$59.95 + 39 x \$19.95 + \$5 = \$843)

The amount is payable to:

Nova Kreditna Banka Maribor
SWIFT code: **KBMASI2X**
Account # **27620-623-040-0094307**

Slovenian residents please add 5% sales tax.

Order information:

Name (exactly as in Help/Register form) _____
Company (if any) _____
Address _____
City _____
State _____

Zip/Postal Code _____

Country _____

Tel _____

Fax _____

E-mail _____

Deliver by e-mail (no s&h costs): YES NO

Single computer license \$59.95

Additional licenses _____ x \$ _____

S&H (\$0 if e-mailed): \$ _____

TOTAL costs (in USD): \$ _____

Cash or bank money transfer confirmation is included in this envelope.

Date _____

Signature _____

Trademark Information

Sight & Sound and Calypso are registered trademarks of Sight & Sound Slovenia.

All other company and product names are registered trademarks or trademarks of their respective holders.

Copyright Information

Calypso for Windows 95, Copyright © 1997 Sight & Sound. All rights reserved.

The following files are used by directly or indirectly by *Calypso* and are © by their respective companies:

- LEAD Technologies Inc.: LEAD.VBX, LEAD51.DLL
- Somar Software: SUMMARY.DLL
- Borland International: BIVBX11.DLL
- Inner Media, Inc.: DUNZIP32.DLL, DZIP32.DLL

General options

This page contains general options for customizing *Calypso*.

See also: [General options in detail](#)

Options - General

Always show command line

Show command line under file window permanently or hide it after it loses its focus.

Show memory status

Show memory status and other information in under file window permanently. The contents changes periodically (interval is about 15 seconds).

Show tips at startup

If enabled, *Calypso* displays a window with a '**Tip of the day**' at each program start.

Show quotes at startup

If enabled, *Calypso* displays a window with a '**Quote of the day**' at each program start.

Directory shell extension

Enable/disable *Explorer* shell extension. That extension is available by rightclicking any directory (folder) in *Explorer* and choosing option '*Calypso*'. That will start *Calypso* and position the current directory in the selected one.

Allow one instance of program only

Allows only one *Calypso* window running. If started again, previous instance gets focus.

Explorer-style directory creation

Enable/disable *Explorer*-style directory creation. That basically means that the new directory is already created and it is then renamed to the desired name. Standard option is, however, to choose a name before its creation.

Explorer-style directory renaming

Enable/disable *Explorer*-style directory renaming - in-place editing.

Log CD-ROM disks from archives?

Enable/disable logging CD-ROM disks from cache (*.CCC) files in *CACHE* subdirectory. If enabled, program will log CD-ROM disk contents from previously saved CD-ROM cache file (if it was archived with the '**Archive CD-ROM**' option). That enables you to directly manipulate one, more or all files before logging it as the CD-ROM access is much slower than hard disk access.

Right mouse click displays context menu

Right mouse click usually displays *Calypso* file menu. Shell context menu is available by pressing Shift and rightclicking the file. You can swap this behaviour to display Shell context menu by default and *Calypso* menu by Shift-rightclicking the file.

Double mouse click execute file

Double mouse click on the file toggles its tag by default. If you are used to different behaviour, you can use this option to set the action of double mouse click to Execute (*Explorer* style).

Reread current directory on program switch

If set, *Calypso* will scan current directory for any file changes every time the program becomes active

(you switch from another program). If unset, you have to trigger scanning manually.

Quick file view/play

Enable/disable quick file view window. It displays graphic formats: BMP, WMF, EMF and ICO files, otherwise it displays file information about that file. Multimedia files (WAV, MID, AVI) can be played instantly by pressing the '**Play**' button.

Auto-play multimedia files

If set, *Calypso* will start playing audio or video multimedia files as they are selected. Great for previewing (pre-listening) multimedia files. If unset, you must start playing manually by pressing the '**Play**' button. This option works only when '**Quick file play**' is enabled.

View options

This page contains options for customizing file and directory view style.

See also: [View options in detail](#)

Options - View

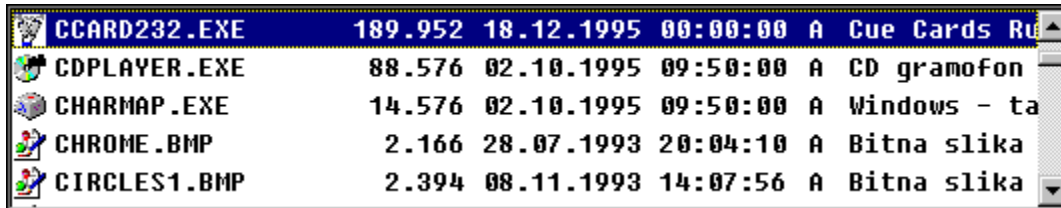
File display options






File window supports two view styles (detailed and short) in altogether five modes. Detailed view styles include following file informations:

- file icon
- file name (or full name if '**Display full path**' option is set). If the name is too long, it will be stripped with ellipsis (...)
- file size (in bytes)
- file date and time (format depends on currently selected language driver)
- file attributes (Archive, Read-only, System and Hidden)
- file description (if '**Show file description**' option is set)

Examples:






- small icons (defaults to 16x16 pixels)



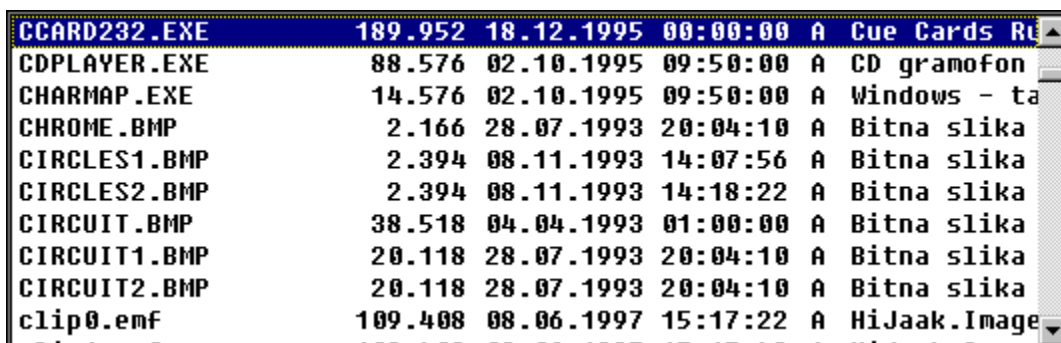
 CCARD232.EXE	189.952	18.12.1995	00:00:00	A	Cue Cards Ru
 CDPLAYER.EXE	88.576	02.10.1995	09:50:00	A	CD gramofon
 CHARMAP.EXE	14.576	02.10.1995	09:50:00	A	Windows - ta
 CHROME.BMP	2.166	28.07.1993	20:04:10	A	Bitna slika
 CIRCLES1.BMP	2.394	08.11.1993	14:07:56	A	Bitna slika

- large icons (defaults to 32x32 pixels)



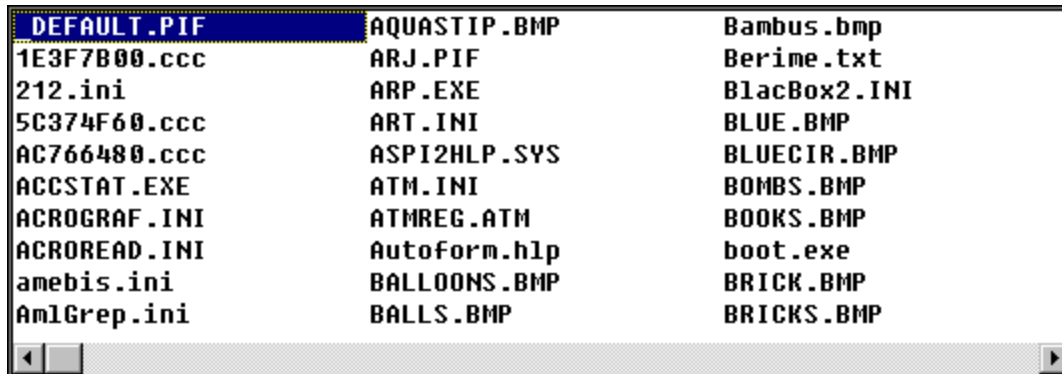
 CCARD232.EXE	189.952	18.12.1995	00:00:00	A	Cue Cards Ru
 CDPLAYER.EXE	88.576	02.10.1995	09:50:00	A	CD gramofon
 CHARMAP.EXE	14.576	02.10.1995	09:50:00	A	Windows - ta
 CHROME.BMP	2.166	28.07.1993	20:04:10	A	Bitna slika
 CIRCLES1.BMP	2.394	08.11.1993	14:07:56	A	Bitna slika

- no icons

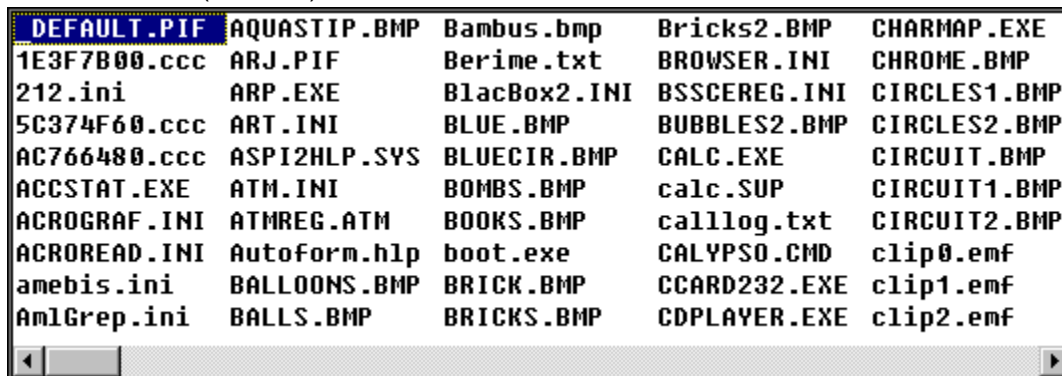


CCARD232.EXE	189.952	18.12.1995	00:00:00	A	Cue Cards Ru
CDPLAYER.EXE	88.576	02.10.1995	09:50:00	A	CD gramofon
CHARMAP.EXE	14.576	02.10.1995	09:50:00	A	Windows - ta
CHROME.BMP	2.166	28.07.1993	20:04:10	A	Bitna slika
CIRCLES1.BMP	2.394	08.11.1993	14:07:56	A	Bitna slika
CIRCLES2.BMP	2.394	08.11.1993	14:18:22	A	Bitna slika
CIRCUIT.BMP	38.518	04.04.1993	01:00:00	A	Bitna slika
CIRCUIT1.BMP	20.118	28.07.1993	20:04:10	A	Bitna slika
CIRCUIT2.BMP	20.118	28.07.1993	20:04:10	A	Bitna slika
clip0.emf	109.408	08.06.1997	15:17:22	A	HiJaak.Image

- three-columns (no icons)



- five-columns (no icons)



File icon size

File icon, small or large, can be modified, where small icon can have size between 8-32 pixels and large between 32-64 pixels.

Display full path

If set, files will be presented with their full names (e.g. C:\WIN95\CALC.EXE instead of CALC.EXE).

Fetch file descriptions immediately

If set, Calypso will fetch file descriptions and file icons when you log a directory. That will slow down the logging process, but will speed up scrolling through files.

Show file descriptions in file window

This option will enable display of longer description of the file type as they are much more readable. Instead just of extension .TXT you see description: 'Text document'. This option is effective only when appropriate (detailed) view style is selected.

Show short file names only

If this option is set, Calypso converts all long filenames to short name equivalents and to uppercase (DOS format 8+3).

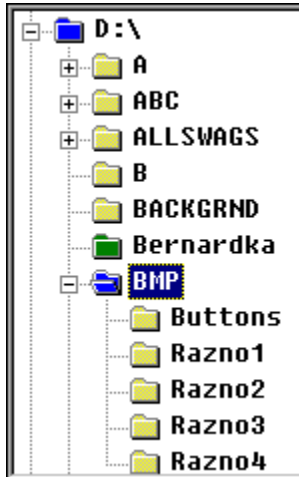
Show directory icons

Calypso uses folders of different colors to indicate state of a particular directory. Colors mean:

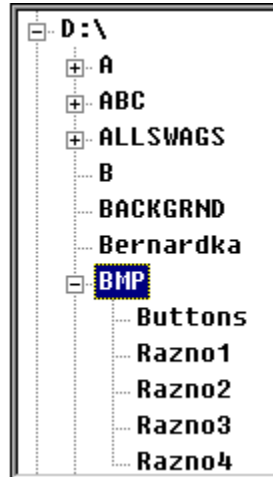
- *yellow*: directory is not logged
- *green*: directory is logged and it has some files in it
- *blue*: directory is logged but it contains no files

You can hide these images to gain more space in directory window (useful when handling really large and deeply nested directories).

Show:



Hide:



Sort options

This page contains options for sorting files in the file window by different criterias.

See also: [Sort options in detail](#)

Options - Sort

File sort options

Files in the file window can be sorted by following orders:

- by name (full name if the view is set to display paths too)
- by extension
- by size
- by date
- by attributes
- by description (available only in appropriate view style)

Reversed sort order

Reverses file sort in the file window (ascending/descending).

Disk options

This page contains options for subdirectory guessing accuracy and startup disks.

See also: [Disk options in detail](#)

Options - Disks

Log disk precision

Choose the log precision level from the log disk precision track bar. It is a level of accuracy when guessing if the directory has any subdirectories.

Levels are:

- none (fast logging, poor precision)
- medium (normal logging, average precision)
- exact (slower logging, high precision)

Log disks at startup

Choose installed fixed or network disks which will automatically be logged at program startup.

Custom extensions

User defined file specifications can be added and modified here.

See also: [Custom extensions in detail](#)

Options - Extensions

User defined file specification(s)

You can easily define your own file specification(s), modify, or delete them. These are used in file specifications and for displaying file descriptions.

Example:

The screenshot shows a dialog box titled "User defined file specification(s)". It contains a list box with one entry: "Temporary files (*.BAK *.TMP *.~*)". Below the list box are two input fields: "File specification(s):" containing "*.BAK *.TMP *.~*" and "Description:" containing "Temporary files". At the bottom of the dialog are three buttons: "Add", "Modify", and "Delete".

Delete options

You can set delete method *Calypso* will use for deleting files.

See also: [Delete options in detail](#)

Options - Delete

File delete options

To offer you more security when handling files, *Calypso* is equipped with several file removal techniques. Those are:

Recycle bin (Safe deletion - recommended for normal use)

Files can be completely recovered from an accidental delete by choosing an appropriate option from *Recycle bin* menu.

Trash Can (Standard deletion)

This method is the fastest one. Files are not destroyed but you need a good undelete program to automatically restore the file.

Shredder (Destroy deletion)

This delete method is secure. Files are truncated before they are deleted so the undelete programs cannot calculate the occupied size. For experts, files are still salvagable by manual sector-by-sector allocations.

Incinerator (Fast-wipe deletion)

This is very secure deletion. Files are overwritten and truncated before they are deleted. It is virtually impossible to recover the file that was deleted with this procedure.

DoD (Government secure deletion)

The ultimate security in file delete techniques. Noone can restore the file that was deleted this way, not even the most experienced hacker. The procedure consists of repeated overwrites by specifications DoD 5220.22-M.

User can also quickly empty the *Recycle bin* by pressing button '*Empty recycle bin*' or access it's menu by rightclicking the trashcan icon. Doubleclicking the trashcan icon will show the contents of the *Recycle bin*.

Tools options

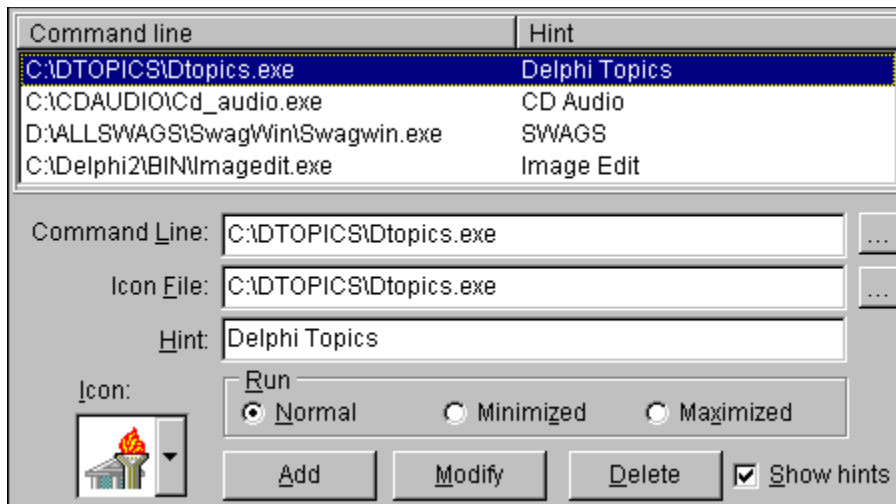
Here you can add custom programs to the tools speedbar.

See also: [Tools options in detail](#)

Options - Tools

Calypso allows user defined tools to be added to the toolbar. To add new tool follow these steps:

1. Enter tool's command line or browse for it ...
2. Choose tool's icon file ...
3. Enter tool's hint (description) ...
4. Choose tool's run style ...
5. Add tool to tool list by pressing the **'Add'** button.



Compatibility options

Here you can lower usage of system-dependent calls that *Calypso* makes during its operation.

See also: [Compatibility options in detail](#)

Options - Compatibility

To fully utilize your computer, you can choose compatibility mode *Calypso* works in. That depends on which version of operating system your computer uses. Possible choices are:

- **Minimum** (Windows NT 3.5x, Win32s - most advanced program's functions are disabled)
- **Medium** (Windows 95 OSR/2, Win NT 4.0 - default, most program's functions are enabled)
- **Full** (100% Windows 95 compatible - all advanced program's functions are enabled)

NOTE: '*Minimum*' compatibility does not mean that you can run the program on Win32s or Windows NT 3.5x rather the level of system-dependent calls that are used!

WARNING: Set compatibility to '*Full*' only if you are absolutely positively sure that your computer is 100% Windows 95 compatible.

Directory buttons options

Here you can add command buttons (menu choice equivalents) to the directory command speedbar

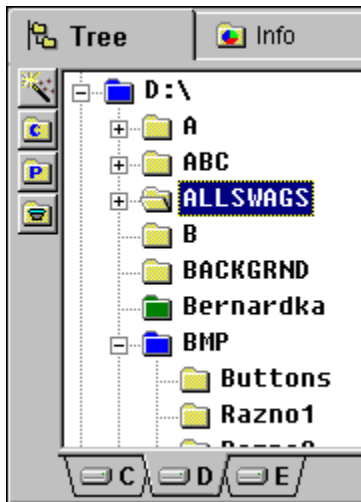
See also: [Directory buttons options in detail](#)

Options - Directory buttons

Calypso allows special small iconic command buttons to speedup access to the most directory commands. Drag appropriate directory command from right window to the button list. After you confirm your changes by pressing the 'OK' button, directory buttons appear on the left side of the directory window.

The icons on the buttons are the same as in the menu to visually represent that command. Each button has a hint that is displayed after a short waiting period of inactivity when the mouse is moved over. Hint includes keyboard shortcut you can use to execute that same command.

Example:



See also: [File buttons](#).

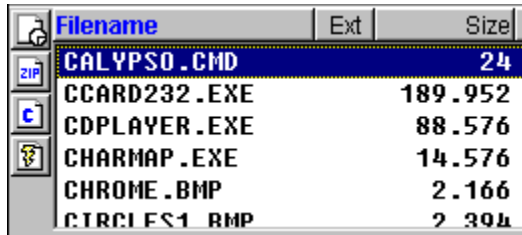
File buttons options

Here you can add command buttons (menu choice equivalents) to the file command speedbar

[File buttons options in detail](#)

Options - File buttons

Calypso allows file command buttons too. Read ['Directory buttons'](#) section for more details.



Filename	Ext	Size
CALYPSO.CMD		24
CCARD232.EXE		189.952
CDPLAYER.EXE		88.576
CHARMAP.EXE		14.576
CHROME.BMP		2.166
CIRCLES1.BMP		2.304

Sounds options

Here you can choose a sound *Calypso* makes after a lengthy operation.

[Sounds options in detail](#)

Options - Sounds

Calypso can notify you when a lengthy operation completes to avoid idle time and to optimize computer use. After an operation ends *Calypso* makes a sound you chose.

Watchdog options

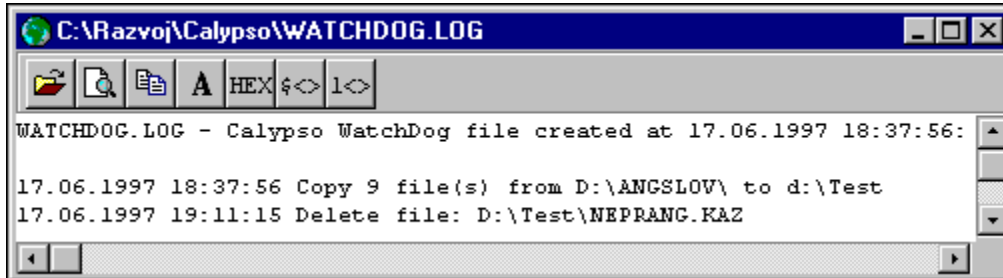
Here you can specify which operations are to be written to a log file for security reasons.

[Watchdog options in detail](#)

Options - Watchdog

Calypso allows you to trace most of file and directory operations. You may select which operations to log and which to skip. Chosen operations are logged in file *WATCHDOG.LOG* for later inspection.

Example:



Confirmations options

Here you can choose operations that require your confirmation before continuing.

[Confirmations options in detail](#)

Options - Confirmations

Some operations can be set to ask for confirmation before execution to allow more specific operation and to allow you to change your mind. Here is a list of actions that can be confirmed:

- Releasing a disk
 - Ejecting CD-ROM
 - Program exit
 - Removing &virtual root
 - Archiving a CD-ROM
 - Logging from archive
 - Disconnecting from network
 - Pruning a directory branch
 - Deleting a file with special attribute (other than just 'Archive')
 - Deleting / renaming protected file or directory
- A protected file is a file that Windows uses for startup or operation

Shortcuts options

Here you can customize keyboard and menu command shortcuts.

[Shortcuts options in detail](#)

Options - Shortcuts

Calypso allows user defined shortcuts (keystrokes) for all important commands and actions. Select the one you want changed and press the desired combinations of keys in appropriate input entry. Click 'Modify' to confirm your changes. With *Calypso* we included two shortcut templates to simulate behaviour of *Norton/Windows Commander* and *XTreeGold* clones. You can also save your customized layout to file for your friends or other workstations you might administrate. If you change the extension of saved file to *.TXT, *Calypso* will save a shortcut report rather than template itself. The report is automatically viewed after it has been saved. Great for duplicate checking and remembering the key combinations!

NOTICE: Shortcut changes are NOT checked for duplicates! Be very careful!

Viewer/Editor options

Here you can choose viewer and editor you use when viewing/editing files.

[Viewer/Editor options in detail](#)

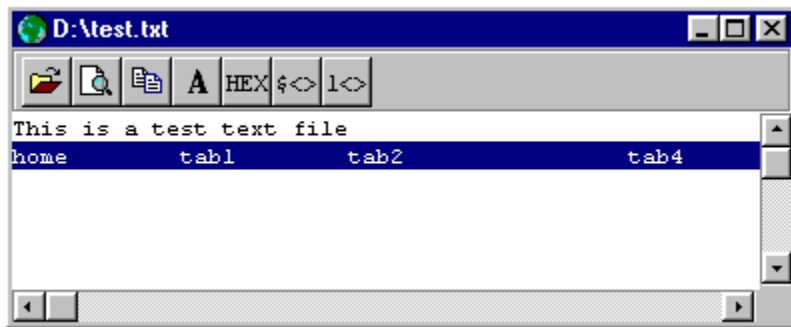
Options - Editor/Viewer

Calypso allows use of user defined external editor and viewer rather than internal versions. It is recommended that you use internal utilities as they integrate tightly with *Calypso* operation. Both Editor and Viewer have capability to edit/display files of unlimited size. Note, however, that handling huge files can be a lengthy process.

See also: [Viewer](#) , [Editor](#)

Viewer

Calypso has a powerful and versatile built-in viewer that can handle files of unlimited size, variable length hex display, variable hex header line, ascii and hex search capabilities, customizable font display and clipboard copy and append function.



Program buttons (left to right):

- **File open** (opens a new file in viewer) equals to pressing *F4* function key
- **Find text** (finds a text or hex combination if hex display on) equals to pressing *F7* or *F9* function keys
- **Clipboard copy** (copies currently selected line to clipboard - hex or ascii) equals to pressing *Ctrl+C* or doubleclicking the line
- **Clipboard append** (appends currently selected line to clipboard contents - hex or ascii) equals to pressing *Ctrl+Alt+C*
- **Font change** (change the font viewer uses for text display) equals to pressing *F2* function key
- **Toggle Hex/Ascii display** - equals to pressing *H* key
- **Hex line length** (set the default hex line in bytes) equals to pressing *L* key
- **First hex line length** (set the length of first hex line) equals to pressing *1* (one) key

There's also a possibility of '*Find next text*' without the find dialog active. The keyboard shortcuts are: *Space* and *F3*.

Selecting attributes

Check the appropriate attributes you want set, unset or left unchanged.

See also: [File attributes](#)

File attributes

DOS (and any other PC file system) use special flags that are pinned to each file. Those are:

- Archive (A) Changed since last backup.
- Read-only (R) Cannot be written to or deleted.
- Hidden (H) Hidden from applications to prevent system malfunction
- System (S) Used by the operating system

Example:

+A means that *Calypso* will add 'Archive' attribute to the file

-A means that *Calypso* will remove 'Archive' attribute from the file

You can use combinations, like: **+A-R** which means 'Remove Read-Only and add Archive'. If the file already has the attribute you want to add it will be ignored. Same goes if you want to remove a nonexistent attribute from a file.

NOTICE: *Calypso* ignores special attributes and allows working with **ALL** files. Although a protection system is implemented it is still possible to change or delete a file that is necessary for system to work properly and cause system malfunction.

Compare filelist

Files in the file window (either in a ShowAll or normal) can be compared to files in another (target) directory and tags files in file window that match specified criteria.

Criteria:

- **Unique filenames** (tag files that don't exist in the target directory)
- **Same filenames only** (tag files that exist in the target directory)
- **Same filenames and newer dates** (tag files that exist in the target directory but are newer)
- **Same filenames and exact dates** (tag files that are exact duplicates in the target directory)
- **Same filenames and older dates** (tag files that are older backups of the files in the target directory)

See also: [Tagging and untagging](#)

KaBoom

We try to keep our software as bug-free as possible. But, as Murphy said: "*There's always one more bug*". We cannot test *Calypso* under every environment imaginable so it is quite possible that your's is what we didn't think of. If the display says that it is a FATAL error, please note what you were just doing and tell us so we can fix the situation, if possible. In many months of beta testing we found out that sometimes the reason of software crash comes from another program but causes all (or almost all) other programs (including *Calypso*) to encounter difficulties or malfunctions. So - restart your computer and try the same operation that caused an error again. If *Calypso* crashes again, it's probably our fault (it will work in the next version, I promise!).

Anyway - in 99.5% cases of encountered errors (even fatal ones) *Calypso* is still functional due to it's new "shock-proof" technique. Note, however, that repeatable error reports are something to think about. Perhaps you have *Calypso* set to operate in *full* compatibility mode? If so, you might consider setting it to *medium* and things just might get to normal. It is generally a good idea to contact us as we might have the answer you are looking for...

See also: [Compatibility options](#)

File information

Displays additional informations about the file such as:

- type (description)
- location (directory it resides in)
- size in Kb and bytes
- date of last change
- hex dump of the first kilobyte of the file
- additional informations supplied by the *FileInfo plugin*

FileInfo plugin displays following information:

- FILES.BBS entry for that file (if FILES.BBS file is present),
- DESCRIPT.ION entry for that file (if DESCRIPT.ION file is present),
- executable description (if file is an executable file),
- version information (if it is linked to the file)
- creation date and date of last change
- summary info - author, title etc. (if file is a Microsoft Office document)
- host program associated with the file
- and additional information from following formats:
 - TrueType font
 - Type 1 font
 - CCC (*Calypso* CD-ROM cache file)
 - WAV sound file
 - MID sequence
 - ANI cursor file
 - SWG (SWAG snippet) file

Register

Fill out your name and registration code **EXACTLY** as reported by your software dealer then confirm your entry by pressing ***Register*** button.

NOTICE: Violation of registration with invalid and illegal registration codes is a violation of international copyright laws!

File specification

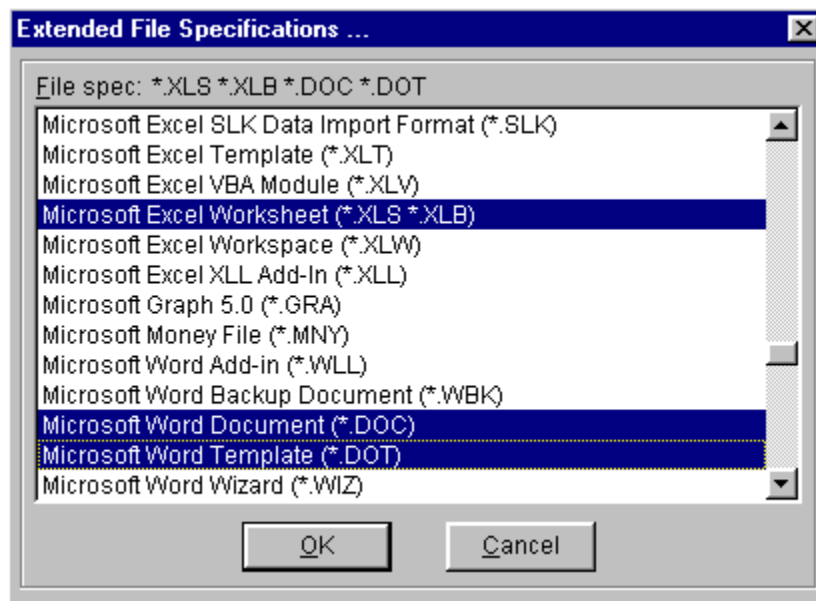
Enter your file specification here using wildcards (*, ?). Specification can sometimes include several wildcards separated with spaces. If you need to enter a space sign in your expression, use ? sign (any character). Press F2 for *Extended file specification*.

See also: [File specification in detail](#)

File specification

Times, where users were lost in filenames and extensions are over. Long filenames enhance the way we name our files, but extensions are still a major drawback. To make work with different file types simple we provided *Calypso* with a powerful feature - **Extended file specification**. It basically means that you choose filtering (or selecting) by selecting from a list of human-readable descriptions rather than three-letter codes. You don't have to remember that an *Excel* worksheet has an extension of **XLS** because you can pick '*Microsoft Excel Worksheet*' from the list! You can even select multiple file types to include in your operation. Computer will translate your entry into three-letter extensions you can later review and edit to your preference.

Example:



Of course that isn't all there is to it. If you use file specification as a filter in the file window, you can use it to exclude certain file types by clicking on '**File Spec:**' or choosing appropriate command (with menu, keyboard shortcut or a command button).

Don't forget - file specification is case insensitive and can also include filename pattern!

Examples:

- *.TXT (Text documents)
- *.EXE (Programs)
- *.EXE *.DLL (Executable files)
- Backup?of?*. * (MS Office backup files)
- *.tmp *.bak *.old *.\$\$\$ ~*.* (Temporary files)

Rename operation considerations:

File specification in rename procedure has an additional feature. Percent sign (%) is used as a counter.

Example:

You have 10 tagged files with various names and want to rename them to TEST1.DAT, TEST2.DAT ... TEST10.DAT.

The required rename specification would be: **TEST%.DAT**

Easy, isn't it?

Copy As/Move As considerations:

When entering file specification for *Copy As/Move As* operation, use a **SINGLE** specification only (not multiple).

Directory command buttons

This speedbar shows directory command buttons you assigned. Hint displayed after a short waiting period if mouse is over a button includes keyboard shortcut for that command. Right click the speedbar to customize buttons.

See also: [Configuring directory buttons](#)

File command buttons

This speedbar shows file command buttons you assigned. Hint displayed after a short waiting period if mouse is over a button includes keyboard shortcut for that command. Right click the speedbar to customize buttons.

See also: [Configuring file buttons](#)

Tools buttons

This speedbar shows external programs you assigned. Hint displayed after a short waiting period if mouse is over a button contains file description for easy selection. Right click the speedbar to customize buttons.

See also: [Configuring tools buttons](#)

Drag and drop

Calypso has been equipped with several drag-and-drop capabilities to improve its performance.

Dragging files from the file window to the directory window:

You can drag one or more files from the file window to the directory window. If you press the <Ctrl> key when you drop the files it will trigger the **copy** operation, otherwise it will trigger the **move** operation. The destination directory is the one you dropped your files onto.

You can also scroll through the directory window view by pointing the mouse on the top or bottom directory in the directory window which will trigger scrolling up or down respectively.

If the directory you want the files to be copied or moved is not logged yet point the mouse over its parent and wait about a second. The selected directory will be logged and opened revealing all its subdirectories. If you find the directory structure too large, you can point the mouse over a logged branch and wait about five seconds. After that the branch will close, hiding all its subdirectories.

You can also point the mouse over the drive tab right under the directory window which will cause that drive's root directory to be shown in the directory window. That is extremely useful when dealing with several drives and large number of directories which would otherwise make scrolling through them a real pain.

Dragging directories from one position to another in the directory window

You can quickly move or copy a whole branch from one location to another by dragging it. If you press the <Ctrl> key when you drop the directory it will trigger the **copy** operation rather than **move**. The process will not allow dragging parent directory to one of its subdirectories (as this can't be done). You can scroll through the directory window exactly the same as when dragging files.

Dragging files from Explorer/File Manager to Calypso

Calypso accepts dropped files from other sources like Explorer and File Manager. Depending on the drop location *Calypso* responds to dropped files in two different ways:

- 1) If you drop the files in the file window *Calypso* logs all the directories which contain them and displays the files in the maximized file window for further operation
- 2) If you drop the files in the directory window it will copy dropped files to the directory you pointed.

Dragging files from 'Find results' to directory and file window

When **Finder** completes its operation or is aborted, you can use drag-and-drop method to deal with results. If you drag one or more files to the file window *Calypso* will log all the directories which contain them and display the files in the maximized file window for further operation.

Dragging to the directory window is a little bit trickier as the directory window is not visible when **Finder** is visible. Switch pages by dragging files to the 'Tree' tab and point to the directory you want the files copied to.

File window

This is the window with all files in the currently selected directory. Press right mouse button to display popup menu or <Shift> and right mouse button to display context menu of currently selected file. Click the appropriate column headers to change sort criteria. Drag the splitter above the column headers to change height of the file window.

See related topics:

[Configuring file window appearance](#)

[Drag and drop](#)

[File operations explained](#)

[Program usage](#)

Program usage

Calypso is pretty much self-explained. Context-sensitive help is provided at some points with guides to detailed explanations. All controls have hint texts that briefly explain their operation and purpose. Hint is displayed in the status line too so you don't have to wait for the hint balloon to appear. Use both mouse buttons where left button means selection or execution of command and right button means additional menu/options and configuration.

Working with *Calypso* is a bit different than working with other file managers. Directories are read only once (the process is called "logging") and working with them does not require constant disk access and makes it much faster and smoother. Due to the fact that files are "remembered" you can choose files you want to work with from several directories at once. Marking one or more files for operation is called "tagging". Tagged files are colored red in the file window whereas untagged files with default black color.

You perform all operations on your file(s) in the file window. To display files from multiple directories (all or all tagged) *Calypso* switches in **ShowAll** mode. When browsing through directories or handling files in the current directory only *Calypso* is in normal mode. ShowAll can be activated from the directory window only as the result depends on the currently selected directory.

See also: [tagging and untagging files](#) , [ShowAll in detail](#) , [File operations](#) , [Directory operations](#) and [Volume operations](#) .

Tagging and untagging

Calypso supports several types of tagging/untagging methods that are divided in two types:

- 1) the amount and location of files that will be affected by tagging
- 2) the criteria the files should comply to acquire tagged status

First type is divided into:

- 1) single file
- 2) all files in the file window
- 3) all files in current (selected) directory
- 4) all files in current branch (in selected directory and all his logged subdirectories)
- 5) all files on current disk (root directory and all his logged subdirectories)
- 6) all files on all logged disks in all logged directories

Second type is divided into:

- 1) all (using current file specification)
- 2) by attributes (only the files that have specified attribute(s))
- 3) by pattern (files that match specified wildcard patten as well as current file specification)
- 4) by age (files that are older/newer than specified number of days)

Menu contains all combinations for you to use in a single click.

NOTE: Only files that are in logged directories will be affected so you have to log all directories (disks) you want to include in tagging procedure!

See also: [Tag wizard](#)

Tag wizard

Working with files is not an easy task. We realized that in most cases many hours are lost by repeating same or similar sequence of commands.

For example: you want to delete temporary files and backup your data every day after work.

In a common file manager that is a lengthy task and often some files are left out of backup or are left undeleted. We will not go into showing you how this example is done with *Explorer* as we don't have the time or place to write down all the steps necessary (there are over 50 for sure!) as you have to handle each file individually.

Let's see how an experienced user of *Calypso* usually does it without **Tag wizard**:

- 1) Disks that contain temporary files are fully logged
- 2) Global tag by pattern: '*.BAK *.TMP *.OLD'
- 3) Change to directory where you store your scratch files and tag ones you made today
- 4) Change to temporary directory and tag all files in it
- 5) Global Tagged ShowAll
- 6) Delete all tagged files
- 7) Log and change to directory that contains data to be backed up
- 8) Tag all that were changed today
- 9) repeat steps 7 and 8 until all directories are included
- 10) Copy or archive files in the file window to desired location

That is not too much, you'd say. True, but it involves constant attention as you browse through your files and decide whether it should be backed up or not. *Calypso* makes a lot things easier by providing you with several means of tagging but the only answer to repetitive operation is **Tag wizard**.

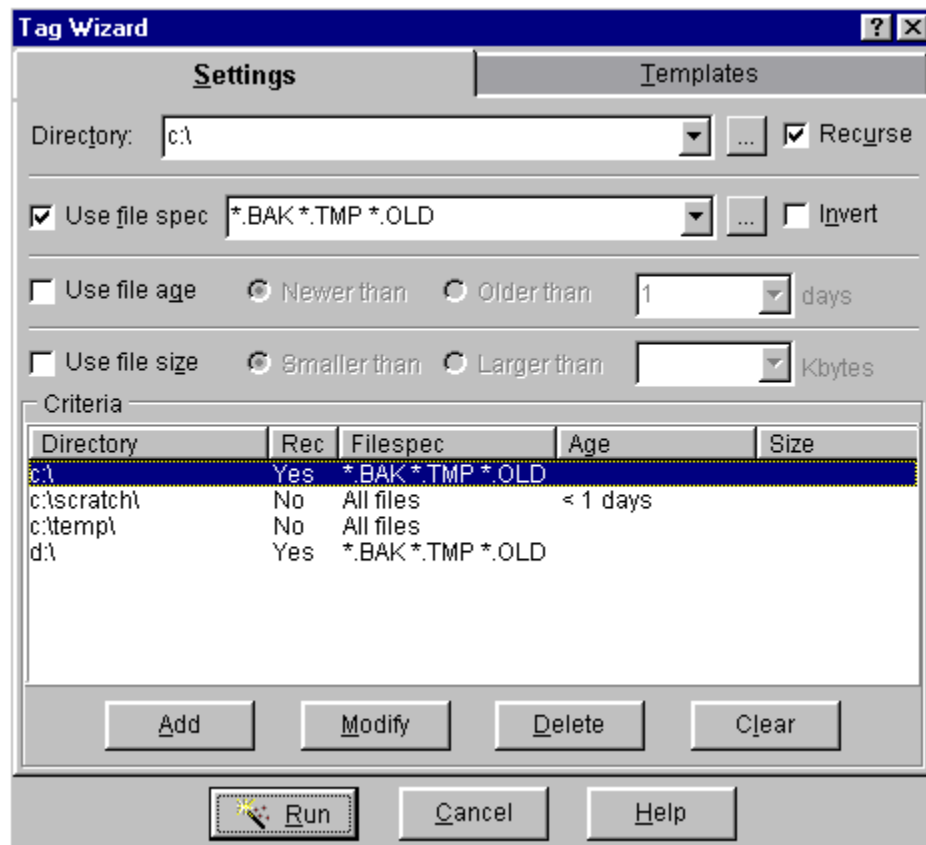
Tag wizard is a method of tagging files by criteria template. It is necessary to compose such a template only once and use it every day. Let's see how the example can be done with **Tag wizard**:

- 1) Invoke **Tag wizard**
- 2) Run a template called '*Temporary file cleanup*'
- 3) Delete all tagged files
- 4) Invoke **Tag wizard** again
- 5) Run a template called '*Daily backup*'
- 6) Copy or archive files in the file window to desired location

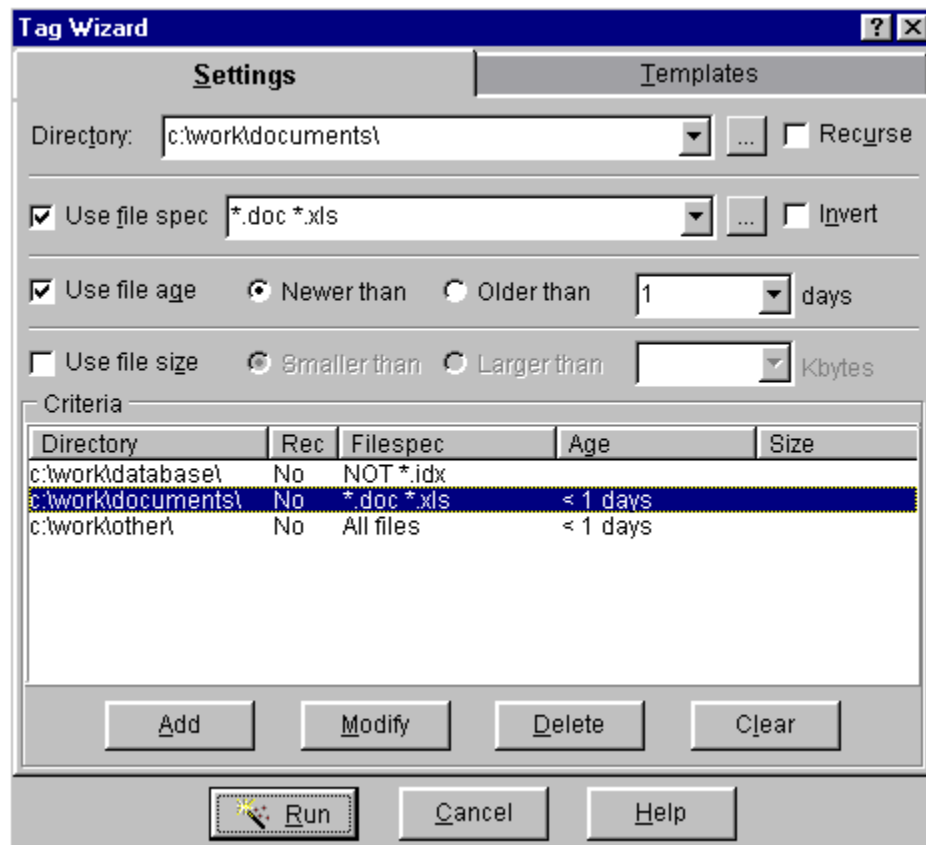
That's it! The best part of it is that you don't have to browse your files and wonder if there is something you forgot.

As said before - **Tag wizard** works with the template you provided. Let's look at the two templates needed for this example:

Template '*Temporary file cleanup*':



Template 'Daily backup':



Working with files has never been easier! It pays to study your needs and write all the templates you will need in your daily work. Once you will get used to **Tag wizard**, you wouldn't have it any other way.

NOTE: Revise your templates and keep them up-to-date as your requirements grow.

See also: [Tagging and untagging](#) , [ShowAll explained](#)

Tag Wizard Templates

Use **Tag wizard** to do complex and/or repetitive file tagging. Select a template you want to run and press 'Load' then 'Run'. The results will be displayed in a *Global Tagged ShowAll* view mode.

See also: [Tag wizard in detail](#)

Tag Wizard Settings

Use **Settings** to modify or create a template. After making changes be sure to write them permanently by pressing 'Apply' or 'Add' button on the Templates page if you want the changes to be stored in the selected template.

See also: [Tag wizard in detail](#)

ShowAll

Calypso supports several types of **ShowAll** display divided in two types:

- 1) all files
- 2) tagged files only

and combined by location:

- 1) files in current directory and all logged directories
- 2) files on current disk and all logged directories
- 3) files on all logged disks and all logged directories

Of course - files must match current file specificatio to be included in the **ShowAll**. If the result of the ShowAll request is an empty list the view is reset to normal mode.

See also: [Tagging and untagging](#)

File operations explained

File operations are divided into groups:

- 1) tagging, untagging (see also: [Tagging and untagging](#))
- 2) operations on a single file
- 3) operations on all tagged files in file window
- 4) other

Tag and untag operations:

Tag/File	tags a single file
Tag/All in window	tags all files in the file window
Tag/All by attributes	tags all files that match specified attributes (see also: File attributes)
Tag/Special	tags all files that match specified file specification (see also: File specification)
Untag/File	untags a single file
Untag/All in window	untags all files in the file window
Untag/All by attributes	untags all files that match specified attributes (see also: File attributes)
Untag/Special	untags all files that match specified file specification (see also: File specification)
Toggle/Current file tag	inverts tag of a single file
Toggle/File tags	inverts tags of all files in the file window
Misc/Compare filelist	compares contents of the file window with files in specified directory (see also: Compare filelist)

Single file operations:

Attributes/File	change attributes of the file (see also: File attributes)
Attributes/Toggle	if the file has attributes other than <i>Archive</i> then <i>Calypso</i> stores attributes of the file and sets its attributes to <i>Archive</i> only otherwise <i>Calypso</i> sets file attributes to the stored ones (by same operation)
Attributes/Paste	set file attributes to stored ones with previous operation
Copy	copy file to another location (under another name if desired)
Delete	delete currently selected file with current delete method (see also: delete methods)
Edit	edits currently selected file with currently selected editor (see also: configuring editor , Editor)
Execute	if the file is an executable <i>Calypso</i> executes the file otherwise its host program for editing
Move	moves file to another location (under another name if desired)
New date/time	changes file's date and/or time
Print	prints the file with internal method or with the host program (see also: Print file)
Rename	change the name of the file
View	display a file with currently selected viewer (see also: internal viewer , configuring viewer)
ZIP/Open	opens ZIP archive
ZIP/Test	tests integrity of the ZIP archive
Misc/Browse icons	browse icon resources in the current file executable (EXE, DLL, NIL, etc.) file (see also: Browse icons)
Info	show additional informations for the current file (see also: File information)
Test	Test integrity of a file (if it is readable - very useful when checking floppy backups)
Properties	show properties of the current file

Operations on all tagged files in file window:

Attributes	change the attributes of all tagged files (see also: File attributes)
Copy	copy all tagged files to another location (under another name if desired)
Copy with paths	copy all tagged files to another location with preserving paths (e.g. <code>c:\abc\1a.txt</code> to <code>d:\test\abc\1a.txt</code>)
Delete	delete all tagged files with currently selected delete method (see also: delete methods)
Move	move all tagged files to another location (under another name if desired)
Move with paths	move all tagged files to another location with preserving paths (e.g. <code>c:\abc\1a.txt</code> to <code>d:\test\abc\1a.txt</code>)
New date/time	change date and/or time of all tagged files
Rename	change name of all tagged file (see also: rename considerations)
Search	search all tagged files for a string
Test	test integrity of all tagged files (if they are readable - very useful when checking floppy backups)
ZIP	compress all tagged files into a ZIP archive (see also: ZIP plugin)

Other operations:

Paste to Cmd line	paste current filename to command line (see also: Command line)
Command line	go to command window (see also: Command line)
DOS prompt	jump to DOS prompt with selected directory as current directory
Find	find file using <i>Explorer Find</i>
Quick search	position on a file by typing a name (see also: Quick file search)
Refill file window	clears and refills the file window (useful if you have a Tagged ShowAll and have untagged some files)
Relog directory	re-read files from the current directory with all tags intact
Change font	change font files are displayed with
File spec	change the file specification files must match to be displayed in the file window (see also: File specification)
Change display	Change view style of file window (see also: configuring view)

Directory window

This is the directory window with all logged directories (green), unlogged (yellow) and empty (blue). Expand node to log one level and collapse node to unlog the branch. Press right mouse button to display popup menu or <Shift> and right mouse button to display context menu of currently selected directory. Drag the splitter below to change height of the file window.

See related topics:

[Configuring file window appearance](#)

[Drag and drop](#)

[Directory operations explained](#)

[Program usage](#)

Directory operations explained

Directory operations are divided into groups:

- 1) tagging, untagging (see also: [Tagging and untagging](#))
- 2) **ShowAll** commands (see also: [ShowAll explained](#))
- 3) operations on a selected directory
- 4) other

Tag and untag operations:

Tag/Directory files	tags all files in the current directory
Tag/Branch	tags all files in the current directory and below
Tag/Branch by attributes	tags all files in the current directory and below that match specified attributes (see also: attributes)
Tag/Branch by pattern	tags all files in the current directory and below that match specified file specification (see also: File specification)
Tag/Branch by age	tags all files in the current directory and below that match specified file age (are newer than specified number of days)
Tag/Disk	tags all files on the current disk
Tag/Disk by attributes	tags all files on the current disk that match specified attributes (see also: File attributes)
Tag/Disk by pattern	tags all files on the current disk that match specified file specification (see also: File specification)
Tag/Disk by age	tags all files on the current disk that match specified file age (are newer than specified number of days)
Tag/Global	tags all files on all logged disks
Tag/Global by attributes	tags all files on all logged disks that match specified attributes (see also: File attributes)
Tag/Global by pattern	tags all files on all logged disks that match specified file specification (see also: File specification)
Tag/Global by age	tags all files on all logged disks that match specified file age (are newer than specified number of days)
Tag/Tag wizard	perform tagging using Tag wizard (see also: Tag wizard in detail)
Untag/Directory files	untags all files in the current directory
Untag/Branch	untags all files in the current directory and below
Untag/Branch by attributes	untags all files in the current directory and below that match specified attributes (see also: File attributes)
Untag/Branch by pattern	untags all files in the current directory and below that match specified file specification (see also: File specification)
Untag/Branch by age	untags all files in the current directory and below that match specified file age (are newer than specified number of days)
Untag/Disk	untags all files on the current disk
Untag/Disk by attributes	untags all files on the current disk that match specified attributes (see also: File attributes)
Untag/Disk by pattern	untags all files on the current disk that match specified file specification (see also: File specification)
Untag/Disk by age	untags all files on the current disk that match specified file age (are newer than specified number of days)
Untag/Global	untags all files on all logged disks
Untag/Global by attributes	untags all files on all logged disks that match specified attributes (see also: File attributes)
Untag/Global by pattern	untags all files on all logged disks that match specified file specification (see also: File specification)

	specification)
Untag/Global by age	untags all files on all logged disks that match specified file age (are newer than specified number of days)
Directory/Toggle/Dir tags	inverses tags on all files in the current directory
Directory/Toggle/Branch tags	inverses tags on all files in the current directory and below
Directory/Toggle/Disk tags	inverses tags on all files on the current disk
Directory/Toggle/Global tags	inverses tags on all files on all logged disks

ShowAll commands: (see also: [ShowAll explained](#))

Show all files/Branch	show all matching files in the current directory and below
Show all files/Disk	show all matching files on the current disks
Show all files/Global	show all matching files on all logged disks
Show all files/Branch tagged	show all tagged matching files in the current directory and below
Show all files/Disk tagged	show all tagged matching files on the current disk
Show all files/Global tagged	show all tagged matching files on all logged disks

Operations on a selected directory:

Cut	mark current directory and its subdirectories for <i>cut</i> (move, graft) operation
Copy	mark current directory and its subdirectories for <i>copy</i> operation
Paste	copy or move previously marked directory and all its subdirectories to currently selected directory
Delete	remove current directory from disk (it <u>must</u> be empty)
Prune	remove current directory and all its subdirectories including all files (branch <u>must</u> be fully logged)
Rename	rename current directory (case sensitive - it is possible to rename test to Test)
Test	test integrity of all files in the current branch (if files are readable)
ZIP	pack all matching files in current directory or branch to a ZIP archive
Misc/Make Root	create virtual root (new disk letter) on currently selected branch
Misc/Remove Root	remove virtual root (disk letter) made previously by Make Root option
Misc/Explore directory	start <i>Explorer</i> with currently selected directory as default
Misc/Statistics	show short summary of files in currently selected directory and below (see also: dir info)
Misc/Relog	re-read files in current directory to indicate any changes (see also: auto-refresh on progress switch)

other directory commands:

Misc/DOS prompt	start a DOS session with currently selected directory as default
Misc/Command line	show and activate the Command line window (see also: Command line)
Misc/Find file	find files using <i>Explorer Finder</i> (see also: internal finder)
Misc/Quick search	go to another directory by typing full path or partial name (see also: Quick file search)
Edit file	start editor with specified or new file (see also: editor)
Change font	change font of the directory window
Properties	show properties of currently selected directory (or disk if root is selected)

File spec

change the file specification files must match to be displayed in the file window (see also [File specification](#))

Toggle/File spec

changes criteria to **exclude** the selection rather to **include**

Path entry window

This window is used to enter a path files are copied or moved to. Type '.' (dot sign) to indicate current directory. Browse the directory structure by pressing the F2 key or pressing the button with ellipsis sign (...). Browsing opens with current selection except when the selection is empty when browsing starts at current directory. The button with '*' (asterisk) sign is used to choose from the *Favorites*. You can also choose from *Favorites* by pressing the F3 key. Cursor keys are used to open the history of this entry and to navigate through past entries. Left and right blue arrow buttons are used to choose current directory on other logged disks and can be triggered with '<' and '>' (greater than and smaller than signs).

Command line

Simple DOS commands and launching various programs with parameters can be done here. You can paste currently selected filename to this window to simplify entering parameters. When executing a command note that the DOS current directory is set to currently selected directory in the directory window so that you don't have to type pathnames for files in the file window that you want to use. Button with ellipsis (...) sign is used to browse for an executable file. Button with lightning sign is used to execute the selection. Button with '*' sign (asterisk) is used to browse previously entered commands in the *Start/Run* menu.

Quick file search

You can quickly search for a file by typing first few characters of its name and press <Enter>. when you are done, press <Escape>.

Quick directory search

You can quickly search for a directory by typing its name. That is basically same as depressing <Shift> and typing the name. If you type full name (e.g. C:\WIN95) and that directory is not logged (or even the drive it is on) *Calypso* will log the drive if necessary and the selected directory. Check also 20 most recently logged directories in menu *Calypso* for the directory you want logged. Choosing a directory from a menu has the same effect as typing its full path. Button with ellipsis (...) sign is used to browse for a directory with currently selected directory as default. Button with '*' (asterisk) sign is used to display directories you have as your *Favorites*. Button with lightning sign is used to search (or log and locate) the selection.

Prune directory branch

WARNING: This is a very destructive operation and cannot be undone!

To increase speed of this operation we removed some security options including possibility to cancel the operation. Use this option only when you are ABSOLUTELY POSITIVELY sure that you want to remove all directories and files in currently selected directory. Delete method for pruning is always 'Normal - Trashcan' and cannot be changed.

NOTE: You are using this operation at your own risk!

Editor

Calypso was provided with a powerful built-in text editor for simple text editing.

File menu

The *File menu* provides commands for creating new files, opening existing files, saving files, printing files and exiting the text editor.

New	- Create a new file.
Open	- Open an existing file.
Close	- Close currently opened file.
Save	- Save the current file.
Save As	- Save the current file under a new name.
Print	- Print the current file.
Printer setup	- Change printer and the printing options.
Page setup	- Change page layout settings.
Exit	- Quit text editor and return to <i>Calypso</i> .

Edit menu

The *Edit menu* provides commands to undo, redo, cut, copy, paste, and clear the text in edit window.

Undo	Undo last editor actions
Cut	Cut the selected text and puts in on the Clipboard
Copy	Copy the selected text and puts in on the Clipboard
Paste	Insert text from the Clipboard at the cursor position
Clear	Delete the selected text
Select All	Select all text in the edit window
Append to Clipboard	Append the selected text to the contents of the Clipboard
Find	Find the specified text
Find next	Repeats last <i>Find</i> or <i>Replace</i> operation
Replace	Find the specified text and replace it with new text
Date/Time	Insert the current time and date at cursor position
WordWrap	Toggle word wrap on/off
Font	Specify the font to be used in the text window

Settings menu

The *Settings* menu provides option to show/hide toolbar (speed bar).

Help menu

The Help menu provides access to online *Calypso* Editor Help.

See also: [Configuring default editor](#)

Browse icons

Executable files almost always contain icons (their main icon and all others the program might use). You can browse through all the icon resources in specified executable file. *Calypso* also supports icon libraries (ICL, NIL). *Calypso* loads and displays all icons found in the file, number of all icons and two images of currently selected icon - one in normal size and one in double size to show all details in the icon. With button labeled '*Copy*' (or by pressing *Ctrl+C*) you can place currently selected icon on the clipboard or save it to a file (BMP or ICO) by pressing button labeled '*Save As*'.

Example: try browsing icons on the file 'MORICONS.DLL' in your Windows directory.

NOTICE: ALWAYS get permission to use icons from other files in your programs!!!

Print file

You can print files with built-in method or with associated program (depends on the file type). Internal method has many features and options. You can include custom header, page numbers and current date/time. You can print files in multiple columns and with different fonts. Two font presets are available - *Arial* for variable character width and *Courier New* for fixed character width. Why print with fixed text width? If you have tables that have been "space aligned" and written with monospaced font those won't look good if you print with font with variable character width. On the other hand - text paragraphs look inappropriate when printed with font with fixed character width. The two font presets change font name only - not size so if you prefer printing with larger font you can still use those two buttons to toggle font type preserving font size. Set printer settings and page orientation with *Printer setup* and *Page setup* buttons.

Print preview contains exact representation of the print output so you can change options to adjust the output to your preference. When previewing there are several buttons for navigating through the preview, setting zoom ratio, printing and even saving and loading the print preview for later use.

Disk information

Disk information displays following:

- 1) Volume label
- 2) Serial number
- 3) File system
- 4) Disk size
- 5) Additional information:
 - file system capabilities (long/short filename support ACLs etc)
 - if disk type is fixed it displays cluster and sector information
 - if disk type is CD-ROM it displays publisher information (VTOC)

Button labeled '*Refresh*' re-reads information, button labeled '*Properties*' shows properties of the current disk (including sharing and pie chart of usage). Right-clicking the icon brings up context menu of the current disk.

Clipboard viewer

This form displays contents of the Windows clipboard in all formats that Clipboard supports. You can save the contents to the file if it is a bitmap graphic or portion of text. You can also change the font *Calypso* uses to display the text in the window. Clipboard viewer is integrated tightly with Windows so any change in the contents of the clipboard will be automatically shown in viewer without the need for restart.

Volume commands

Volume commands:

Log options/Branch	Log the directory branch from the current directory and all below
Log options/One level	Log only the first level of files and directories
Release disk	Remove current disk from memory
Archive CD-ROM disk	Archive CD-ROM disk for faster logging later
Collapse all disks	Collapse all disks but do not remove them from memory
Refresh all directories	Check all logged directories for changed and new files or directories
Refresh file window	Clear and refill the file window
Map a network disk	Connect to network disk resource
Unmap a network disk	Disconnect from network disk resource
Volume	Change the volume label of the current disk
Serial number	Change the serial number of the current disk
Format	Format the current disk (WARNING - DESTRUCTIVE!)
Duplicate floppy disk	Make an exact duplicate of a removable disk
Info	Show additional informations about the current disk
Properties	Show properties of the current disk

ZIP plugin

Calypso was provided with capabilities to handle ZIP archives that are 100% PKZIP compatible (from PKWARE®) even multi-volume floppy backups are fully compatible with other ZIP tools.

See also: [ZIP](#) , [UNZIP](#) , [test ZIP integrity](#)

ZIP

Name of the archive

Calypso first checks paths of all files that will be archived and suggests placing the archive in the directory of topmost file and name the archive after that directory. For example:

```
C:\ABC\TEST1.DAT
C:\ABC\DEF\AFILE.TXT
C:\ABC\DEF\BFILE.TXT
```

Calypso will suggest C:\ABC\ABC.ZIP as archive name and location.

Calypso checks too if all files have same filename but different extensions. For example:

```
C:\TEST\EXAMPLE.TXT
C:\TEST\EXAMPLE.EXE
C:\TEST\EXAMPLE.DAT
C:\TEST\SOURCE\EXAMPLE.C
```

Calypso will suggest C:\TEST\EXAMPLE.ZIP as archive name and location.

Of course you can change the name and location *Calypso* suggested for the archive file. Use <F2> function key to browse for directory of the archive and change the name as you see fit. If you specify an existing archive, files will be appended to the archive (window caption changes) otherwise new archive will be created.

Settings

'Recurse directories' option is only valid when archiving whole directories/branches. That will indicate that all files from the subordinate directories should be included in the archive process. Before you pack a directory that has subdirectories, *Calypso* asks you to confirm recursing and sets this checkbox automatically to your choice so this option seldom changed. It is used more as an indicator of planned process. If you pack tagged files from the file window this options has no effect.

'Pack path names' options means that paths will be stored in the archive. If you include files from several directories (or a whole branch) this option is automatically set. You can unset it if you want only filenames to be archived. For example:

<i>original path</i>	<i>archive contents if option is set</i>	<i>archive contents if option is set</i>
C:\TEST\EXAMPLE.EXE	TEST\EXAMPLE.EXE	EXAMPLE.EXE
C:\TEST\SOURCE\EXAMPLE.C	TEST\SOURCE\EXAMPLE.C	EXAMPLE.C

'Move to archive' is a very dangerous option. It means that the files are deleted after they are succesfully archived. Be very careful when using this option!

'ZIP Compression' can be set from Fastest (minimal compression, saves CPU time) to Maximum (extra compressons, takes up a lot of CPU time). Note, however, that the space saved (if you use extra

compression) is not that huge (usually about 5-15%) and is usually not worth the extra time. On the other hand, nowadays almost everyone has a Pentium CPU which is pretty fast and does not mind the extra workout.

Every ZIP archive can have a comment describing the contents. You can enter your text in the comment window which will be stored when files will be packed.

You can encrypt your files with a password to gain extra security. This will slow down the archiving process a little bit. See also: [choosing a password](#)

Multiple disk archive

If you want to backup larger amount of files or to transfer files to another computer with floppy disks you could spend all day archiving, copying and fitting the files on the disks. You can use multiple disk archive to simplify your work and save a lot of time. *Calypso* will span the archive through any number of disks (a friend of mine once did a backup of his 540 Mb hard drive - almost 200 floppy disks!). You don't have to prepare floppies before use - *Calypso* can erase or format them before use (set Wipe or Format option)

NOTE: Multiple disk backups can be created only on a removable drive (such as floppy)

Options

You can force *Calypso* to set ZIP date to latest file date instead of the current date.

You can force *Calypso* to include the volume name of the disk you pack files from.

You can set *Calypso* to test the archive after creation.

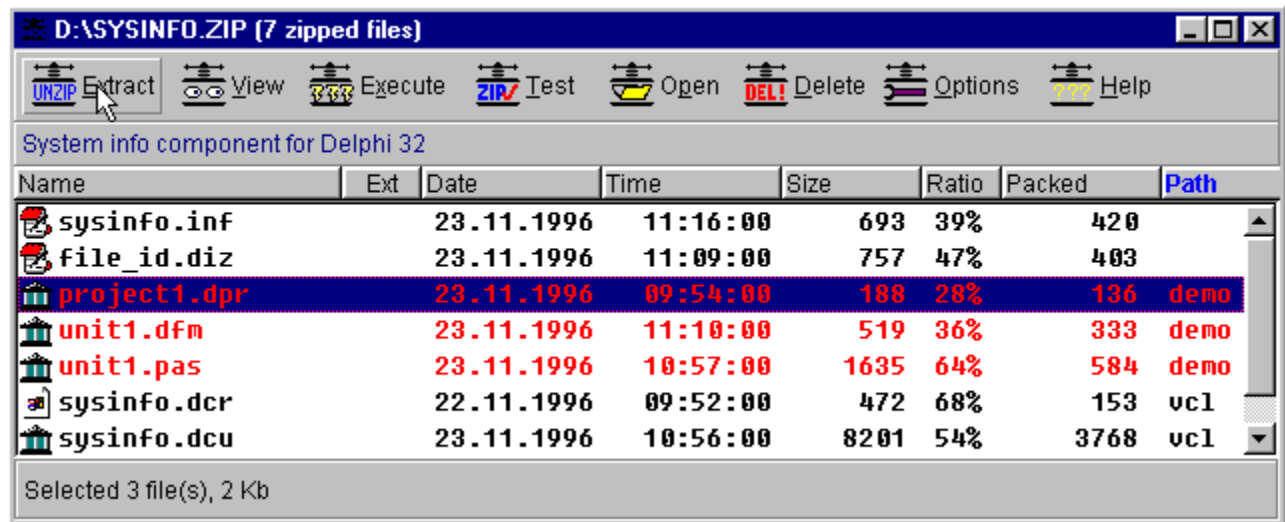
If you transfer files to DOS environment check 'Use 8.3 short filenames' as DOS does not support long filenames and could cause ZIP tools to fail.

You can change temporary directory *Calypso* uses when archiving. It is desirable that the drive is fast (preferably fixed or ram disk).

See also: [UNZIP](#) , [Test ZIP](#)

UNZIP

When you open a ZIP archive, you are presented with the screen similar to following:



Extract

You can extract files from archive here (all, selected only or by specification). If you want paths to be created on the target directory as well, set the 'Use folder names' option. If you don't want to confirm overwrite every time names conflict set the 'Overwrite existing files' option. You can create new directory (suggested name is ZIP archive name) if you press a button with new directory symbol or if you tab to new directory entry. The form is expanded to show additional entries.

View

You can view contents of the selected file if you press this button. *Calypso* asks which viewer to use for viewing. You can skip asking if you unset 'Ask for viewer' option in popup menu of files window.

Execute

You can execute the file with its associated program (e.g. MS Word for DOC files) for editing, viewing or printing

Test

You can test integrity of all files contained in current ZIP archive - if they can be unpacked safely and without errors.

Open

Opens a new ZIP archive

Delete

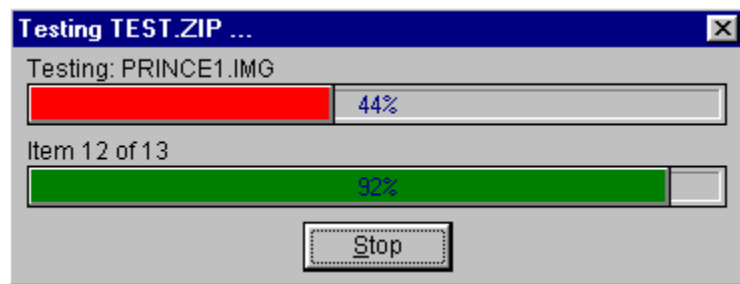
Removes one or more files from ZIP archive. **WARNING - CANNOT BE UNDONE!**

Options

You can change behaviour of some options here (view, file icons, double click, font)

Test ZIP integrity

You can quickly check if the ZIP archive is valid and if all files can be unpacked with no errors. If any errors are found they are reported and *Calypso* displays an error message. You can stop testing by pressing the 'Stop' button or <Escape> or <Enter> key.



Hint: If you want to check floppy ZIP archive eject and reinsert the disk to clear all cache buffers that might cover up possible errors.

Choosing a password

There are some rules that you should follow to improve security when choosing a password for encrypting your files.

Don't write down your password somewhere. I know, it's stupid, but a lot of people do it. Don't use obvious passwords that can be easily guessed. Don't use famous quotations or famous people, famous event names. Don't use nicknames or birthdates or even names of your family, relatives, pets and other people that are somehow related to you. Don't use your car brand or model or your address. You should know that in 9 out of 10 successful system breakins the hacker needed less than a minute to hack the system by guessing the password. Good passwords are made up of several words, perhaps an abbreviation of several words that are easy to remember. Passwords are case sensitive so it is a good idea to mix the case. (A good example: "TiafdtsutM" - today is a fine day to ski under the moon) The less sense the password makes when read the more security it offers. Be sure that the password cannot be guessed by looking at the keyboard over the shoulder as you type.

Last but not least - encrypting files and documents is fine but it doesn't do much good if you have the original, unencrypted file somewhere on your disk. That data can be in backup files or just on "empty" space if it wasn't overwritten yet. *Calypso* was provided with several file removal methods (see: [delete methods](#)) to help protect your data against unwanted recovery.

Another means of recovery are backup files you forgot to delete (all those TMP, BAK and OLD files) and files your program makes in the temporary directory. It is generally a good idea to clean your Windows temporary directory every now and then. A good user also keeps his system virus-free. A virus can damage your data but also infect your operating system and spy all actions. For example, it's really easy to create a hidden background Windows application that checks the keyboard and captures your password when you type it. A virus can also intercept read/write operations, or don't allow *Calypso* to overwrite a file. *Calypso* has no defenses against viruses and assumes your computer is a trustworthy execution environment.

Keep in mind that *Calypso* is designed for a single-user machine. If you are connected to a network, directly or indirectly, the risks of piracy, viruses attacks, illegal access to your system are more important. Also remember that when you delete a file, or free space on your hard drive, faint magnetic traces of the original data remain on the disk after it has been overwritten, that's why I suggest you to use the government wipe option in *Calypso* or some other utility that completely destroys the file. (The government wipe consists of repeated overwriting).

