

# DEL MP3 Karaoke Users Manual

Welcome to the heart of this website. The manual infos are updated, if necessary, at about the same time a new build version or beta of the DEL MP3 Karaoke software is released.

You must consult this section if you want to understand the fonctionnalities of the DMK software. Some sections just illustrates (with picture) the buttons fonctions, while another explains in details the 'how to' synchronize lyrics and music ([see the synch section](#))

We offer you the possibility to download the entire manual; just go to our download section and pick your corresponding build version manual (while there check for a new build version of the software, it's frequently updated).

(to check for you software copy build version, just click the '!' in the upper right corner of the player window. Available since the 2.6 build version)

sections	descriptions
Player	The program player.
Editor	A program window for synchronizing lyrics over music.
Configuration	Windows for configuring the software.
Karaoke	Window in witch the lyrics are displayed in synch to be sang.
Synchronization	This part is for learning how to synchronize the lyrics over music to make or modify karaoke files.

# Player



The selected song file and the

**Selection:**  **144 file(s)**

number of song file in the play list.



If a "file XXX.kok not found" message appears in the karaoke window, that's because the file with the MP3 name that ends with the .kok extension, was not found in the folder you specified while configuring the program or in the same folder as the mp3 file. See the [config section](#).





Choose to make the karaoke window always **on top**.



Start the **editing mode** for creating, importing, or edition of the synchronization.



Allows you to **import lyrics** from karaoke files (.kok .kar) and to save them to a text (.txt) file.



**Auto next**: Starts automatically the next song in the list.



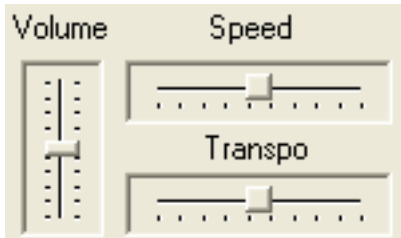
Mutes the music and



hide the lyrics (able you to play a game with the DMK program).



Play the **next or before** song in the list.



Speed: **speed** (tempo) adjustment of the song( .mid and.kar files only)

Transpo: **transpo** adjustment of the song ( .mid and.kar files only)

Volume: **volume** adjustment.

Let's you change the listing display

List >  to  < Detail



Prints the list.



Let's you manually order the songs in the list.



**Shuffle** or **Order** the songs in the list.



**Show/Hide** the player controls.

Liste Répertoire

Liste Sélection

**Dir List :**

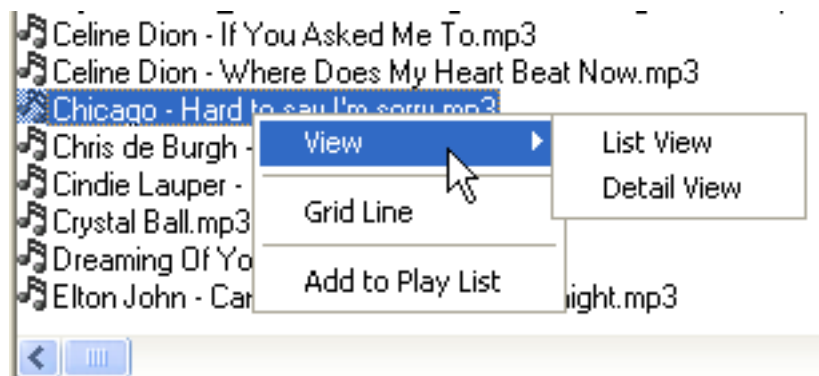
- This mode let's you browse the folders (directories) on your computer.

A **Right Click** shows a menu, giving you access to the following commands:

**View:** Lets you change the display mode of the list.

**Grid Lines:** Displays lines for the detail mode.

**Add to Play List:** Let's you add a song to the current play list.



Liste Répertoire

Liste Sélection

**Play List:**

- This mode let's you save play list you've made from songs on your computer. In the Play List mode, additional fonctions are available for the player.

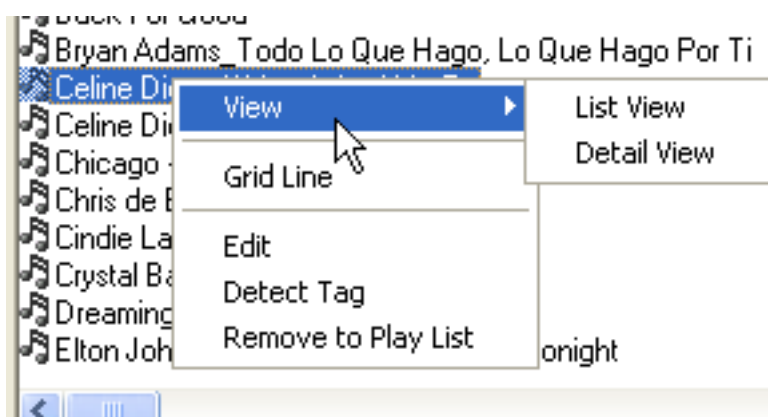
A **Right Click** shows a menu, giving you access to the following commands:

**View:** Lets you change the display mode of the list.


**Grid Lines:** Displays lines for the detail mode.

**Detect Tag:** Imports the Tag (Title and singer) included in the song file (mp3).

**Remove from Play List:** Deletes the selected file, from the Play List.



**In the Play List mode, additional options are available in the tool bar.**

 Lets you customize and modify general and karaoke features, for the selected song. Clicking it, opens the window shown below. It's composed of 2 sections (tabs).

## General Features

**Title:** You can modify the title that will be shown in the Play List.

**Singer:** You can modify the singer that will be shown in the Play List.

**Type:** You can modify the type that will be shown in the Play List.

**Time:** Length of the song.

**Existing:**

- **.kok** -> The presence of a synchronization file for this song.
- **.Ko1** -> The presence of a second synchronization file for this file (used for synchro of duets songs).



The screenshot shows the 'Cecilia' configuration window. The 'General' tab is active, displaying the following settings:

- Title:** Cecilia
- Singer:** Simon And Garfunkel
- Type:** Mp3
- Time:** 3:35
- Existing .Kok:** Yes
- Existing .Ko1:** No
- Path:** d:\Musique\Anglais\Cecilia.kar

Buttons at the bottom include Detect, Apply, Ok, and Cancel.

To find the sychro files, the editor needs that, the files be where you specified in the configuration of the software or in the same folder the song is.

**Path:** The path of the song on your computer.

**Detect:** Import theTag (Title and singer) included in the song file (mp3). If there's no tag with the file, no change will be made.

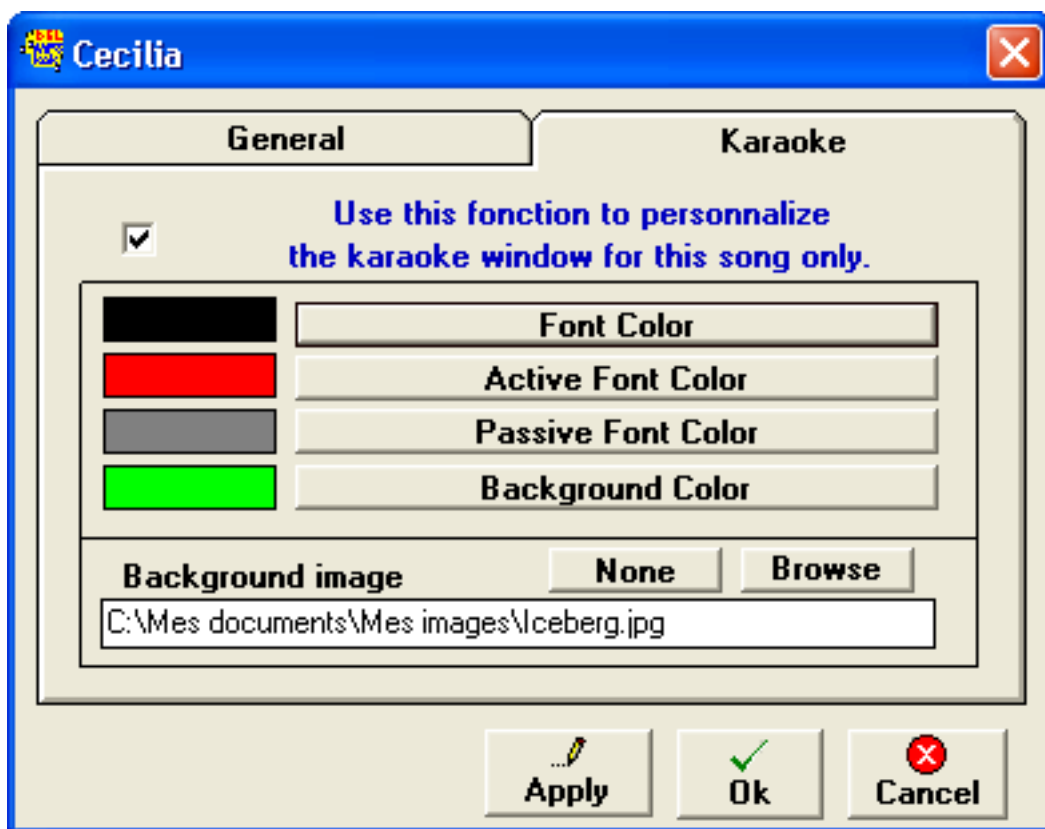
## Karaoke Features

You can customize fonts, background color and image for each song in your Play List.

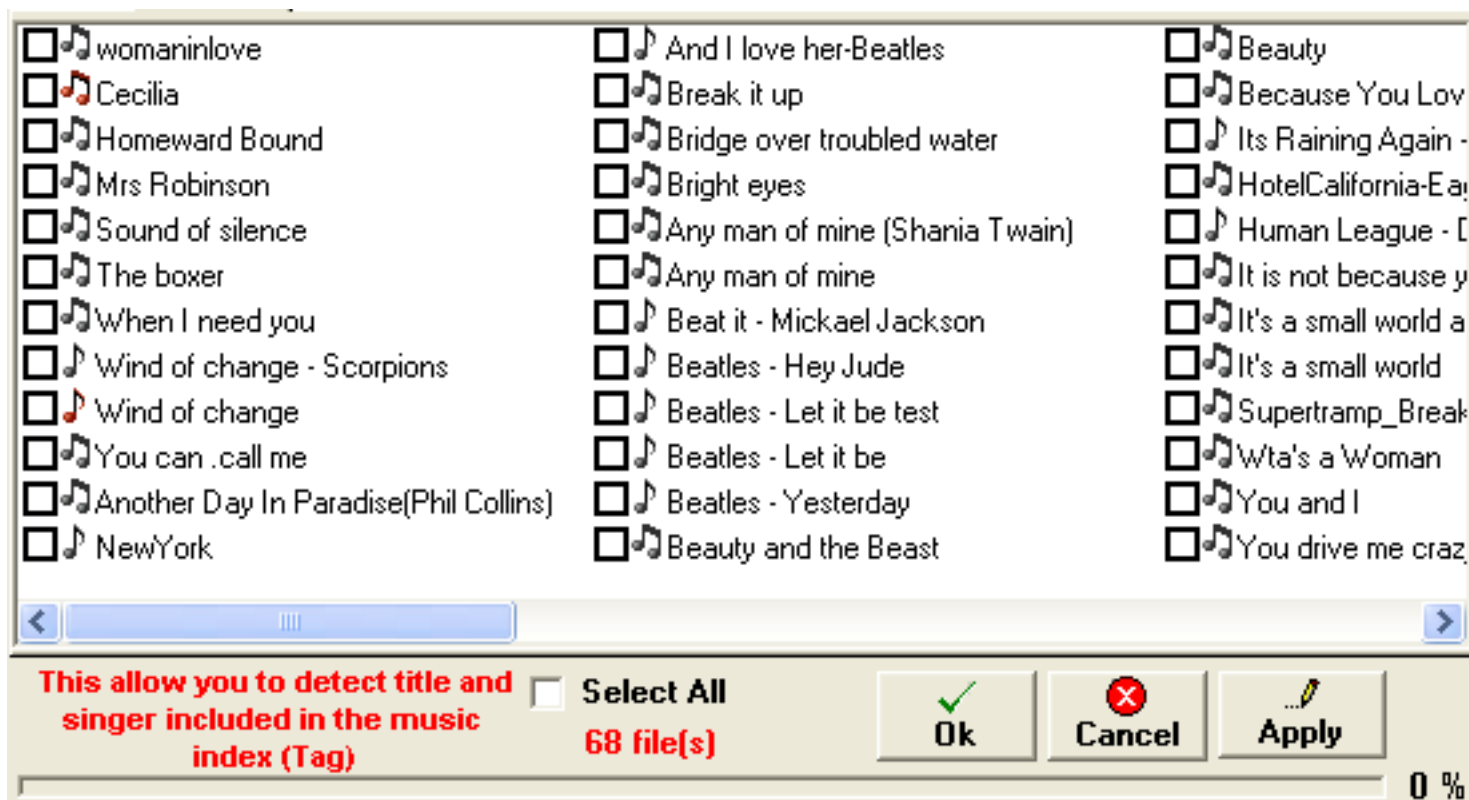
**Apply:** Apply changes to the Play List.

**Ok:** Apply changes and exit.

**Annuler:** Exit without saving changes.



**Detect:** Import the Tag (Title and singer) included in the song file (mp3). If there's no tag with the file, no change will be made.



**Ok:** Detects the Tag index of the selected songs and exit.

**Cancel:** Exit without detection.

**Apply:** Detects the Tag index of the selected songs.



**Adding:** Add the selected (checked) files to the Play List.



**Ok:** Adds the selected song to the list and exit.

**Cancel:** Exit without any addition to the list.

**Apply:** Adds the selected song to the list and keep this window active, so you can continue to add songs to the list.



**Removing:** Substracts the selected checked files to the list.




Note: No files will be deleted on your drive.



**Ok:** Substracts the selected song to the list and exit.

**Cancel:** Exit without substractions to the list.

**Apply:** Substracts the selected song to the list and keep this window active, so you can continue to remove songs to the list.

-  Open a Play List. It becomes the default Play List automatically.
-  Save the changes to the current Play List.
-  Save the current Play List to another name. It becomes the default Play List of the player.

**Configuration:** Shows the configuration window . 

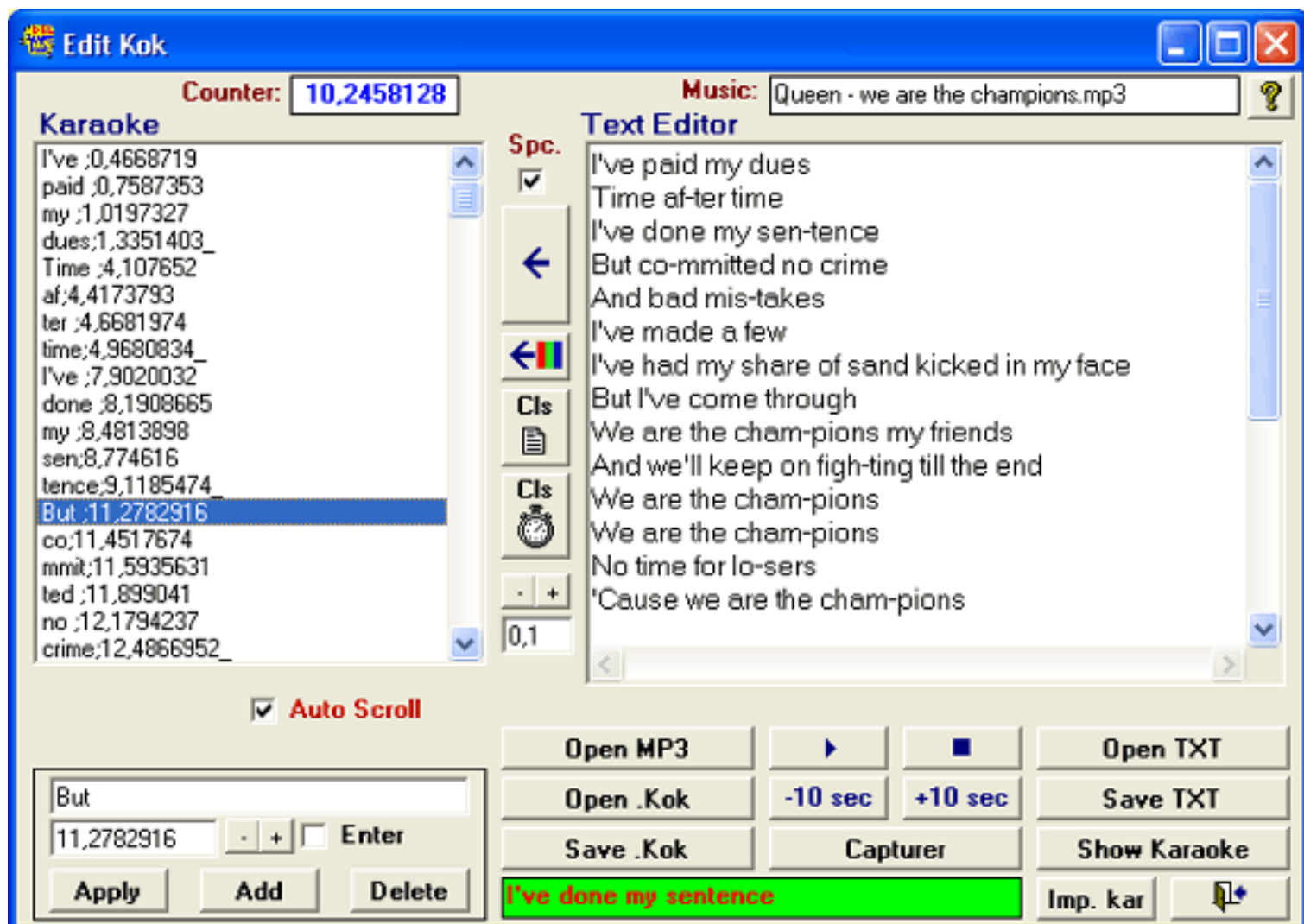
 Shows the version build of our software.

  Exit DEL MP3 Karaoke.

Note: All pictures shown on this page where screen shots of DEL MP3 Karaoke running on Windows XP.



# Editor



**With the editor, you can edit, modify or import a song synchronization.**

**Musique:** Céline Dion - Pour que tu m'aimes encore.mp3

Shows the music file that your synchronizing.

This pane, lets you type or import the lyrics of the song you wish to synchronize.

When the lyrics are entered; you'll have to split signing syllables by '-' (dashes signs). Dashes tells the program where to split the displaying of syllables for synchronization.

You can use the **underscore** '\_' character to replace the dash sign in your lyrics. The program will transform it to a dash sign while importing to the karaoke list.

Put a **slash** '/' at the beginning of a sentence to block transfer it to the karaoke list (it'll jam the space and dashes detection by the program).



[top](#)



#### The Transfer button.

This button lets you **transfer text in the karaoke list**

This will able you to start synchronizing the lyrics.Ce qui permettra une synchronisation par la suite.



It's also possible to only transfert a block of text in the karaoke list; follow the below steps:

1. select the line in the karaoke list where you want to insert the block of text...
2. highlight the desired text in the text editor...
3. and, while holding the CTRL key on your keyboard, click the transfer button.



This option is for selecting the **transfer type**, synchronizing **line by line** (uncheck the option) or a **syllable at a time**(check it). This option is also for selecting if the program will detect spaces and dash '-' when transferring the lyrics in the karaoke list.

[top](#)

## Karaoke List

When imported or transferred, the lyrics to this pane, you will be able to start synchronizing.

Selecting (highlight) a line in this list, enables you to modify this line, delete it or add a new line in the section below the list.

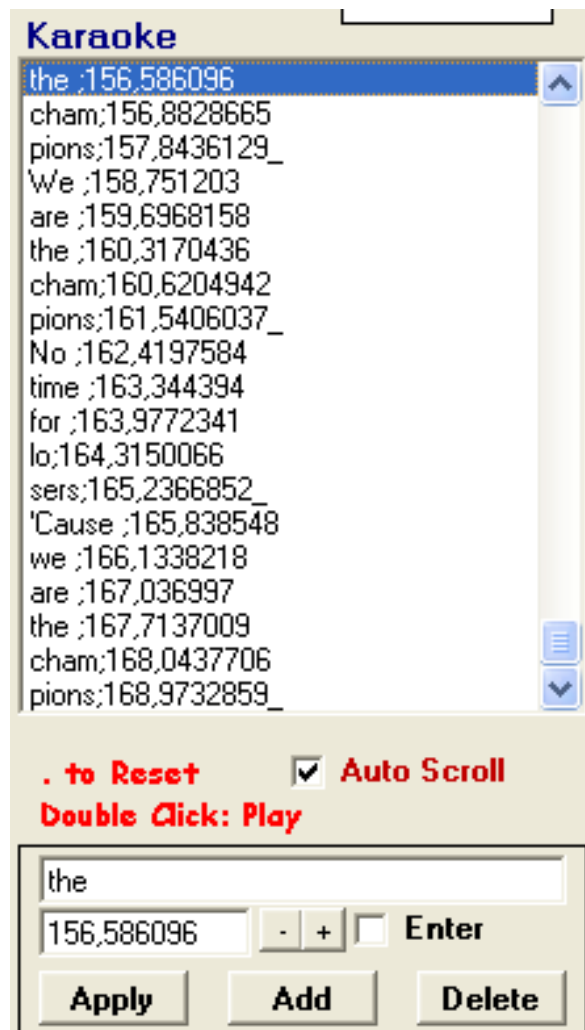
You must stop the music before selecting a line in this list.

Hitting the point sign '.', resets the synchronization time for the selected line.

A **double-click** on a line will start the song precisely at the time of that line.

When playing a song, the scrolling list selects the first line you want to edit, the time of that line being zero, the scrolling will stop, waiting for you to press the space bar (the message **Space Bar** will appear), to capture and write the time to the selected line in the karaoke list.

Ce message vous indique que si vous appuyez sur la barre d'espacement le temps de synchronisation en cours sera inscrit sur la ligne sélectionnée et la sélection va passer à la ligne suivante.



This section lets you **modify the content of the selected line in the karaoke list.**

1. the first field brings what text to display.
2. the second field: the synchronization time.
3. the enter or skip a line option, tells the program that the next line will be displayed on a new line in the karaoke window.



### Buttons:

Apply > save your modifications. Add > adds a new line under the selected one. Delete > deletes the selected line.

With the "+" and "-" buttons, you can add or subtract the time value, you choosed (see sections above), to the synchronization time.



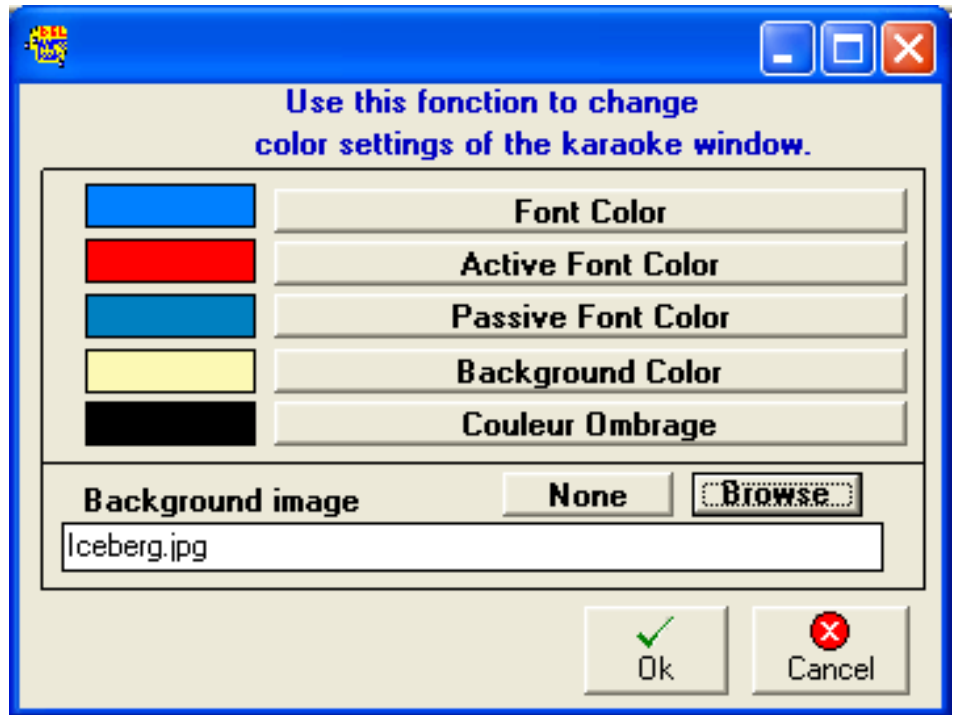
Brings focus to the start of the karaoke list, when it reaches bottom of that list. Unchecked the list will scroll, causing display delay on some computers.



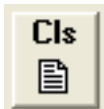
This button will introduce a background color and image change in your synchronization file (.kok), that will be used in the displaying of the lyrics in the karaoke window.

You can insert changes at the start of the karaoke list or at the beginning of each line.

The image file must be in the same windows folder (must have the same path) as the music file.



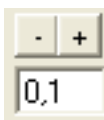
[top](#)



Delete the content of the list.



Resets the synchro to zero in all the karaoke list. If you select a line in the karaoke list, and hold the CTRL key, it'll reset the time from that line to the end of the list. Adds or subtract the indicated value to all the list (default: 0.1 sec.).



You can modify the time value, just by entering a new value in this field..

If you select a line in the karaoke list, and hold the CTRL key, hitting one of the sign (+,-), it'll modify the time from that line to the end of the list.

Play or stop the song.





Rewind or forward the 10 seconds..



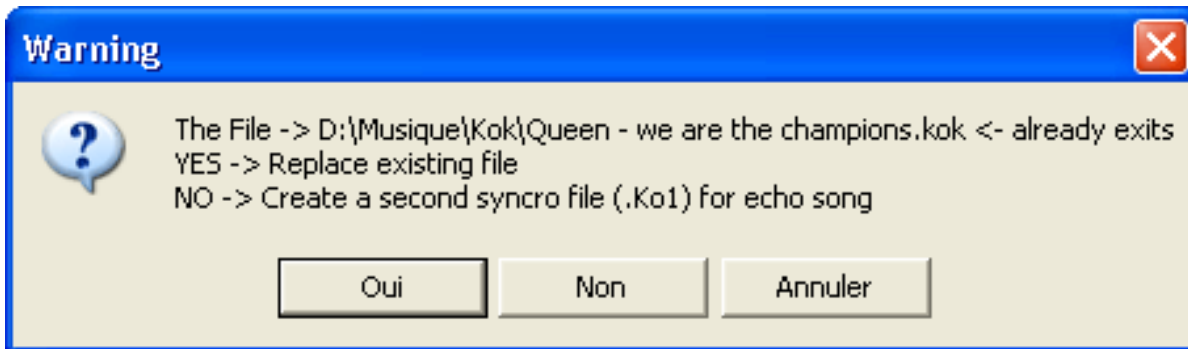
Opens a new MP3, KOK or MIDI music file.



Opens an existing synchronization file (.kok) saves the content of the karaoke list in a file (.kok). The sychro file will have the same file name as the music file with whom it is associated. The file (.kok) will be saved in the folder you specified in the program configuration.


If a sychronization file is already present in the folder, this prompt message will show up.



[top](#)



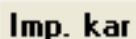
Another way to capture and write the time to the selected line in the karaoke list. Your space bar will do the same action.

**Imports a text file** (.txt) in the Text Editor section.  
**Export the content** of the Text Editor section in a (.txt) file.



... to display the Karaoke Window.



This option lets you import the **synchronization and the lyrics** from a KAR (.kar) file to the editor. You can then modify, correct or just put in your personal touch to the lyrics and the synch\*. Simple and easy.

When you import KAR (.kar) files that way, you **MUST** let the song play to the end. Then save as in the (.kok) format after your modifications.

\*From here on, when you launch that particular file, The DEL MP3 Karaoke player will use the new synch instead of the original. To go back to the original synch, you must rename or delete the file.

Remember that DMK sees the files in the folder that you've specified in the program configuration.

 Will bring you on this web page. You'll have to be able to connect to the web.


Quit the Editor.

# Configuration

You will find in our software **two (2) control panels.**

First, **the basic configuration of the software.** Paths for your music files, themes changing the appearance of the software, you will have to enter your choices there.

The second panel is for **personalization of the appearance of the window karaoke.** Here you can choose a background image by default, choose the color, the font and attributes to this font which composes the words sung.



**[For the basic configurations of the software, it's here.](#)**

**[For the configuration of the karaoke window, it's here.](#)**

## Basic configurations

Configuration	
<input type="radio"/> Français <input checked="" type="radio"/> English	
<b>Path .Kok</b> <input type="text" value="D:\Musique\Kok\"/> <input type="button" value="Browse"/>	Select the file type which you would like DelMp3 Karaoke to open when you double-click on them in Explorer. Then click Associate <input type="checkbox"/> .Kok (DelMp3 Karaoke) <input type="checkbox"/> .Kar (Midi karaoke) <input type="checkbox"/> .Mid (Midi) <input type="checkbox"/> .Mp3 (Mp3) <input type="button" value="Associate"/>
<b>Path Music (.kar, .Mp3...)</b> <input type="text" value="D:\Musique\Mp3\"/> <input type="button" value="Browse"/>	
<input type="button" value="Background Color"/> Background Color <input type="button" value="Fields text Color"/> Fields text Color <input type="button" value="Button Color"/> Button Color <input type="button" value="Reset colors as default"/>	<input checked="" type="checkbox"/> Check monthly update automatically. <input type="button" value="Check now"/>
	Midi Out: <input type="text" value="Auto"/>
<input type="button" value="Save and Exit"/>	

**This section let you configure some essential program parameter.**

You will indicate to the program the:

Path to Music: thats the folder where your music files (.mp3, .mid, .kar) are.

Path to Kok: thats the folder to store your KOK (.kok) files.

<b>Path .Kok</b>	<input type="text" value="D:\Musique\Kok\"/>	<input type="button" value="Browse"/>
<b>Path Music (.kar, .Mp3...)</b>	<input type="text" value="D:\Musique\Mp3\"/>	<input type="button" value="Browse"/>

Note: If these folders don't already exist, you should create them, using windows explorer and name them accordingly. Place the files you'll use with the program respectively in those folders.

<input type="color"/>	<b>Background Color</b>
<input type="color"/>	<b>Fields text Color</b>
<input type="color"/>	<b>Button Color</b>
<input type="button" value="Reset colors as default"/>	

Background color : define a color for the program.  
Text field background color: define a background color for the fields with text.  
Button color: well..  
Reset color as default: Resplace all the colors, to their default, or as they were at the program installation.

Let you insert a background image in the program windows.  
The selected image will be automaticly tiled.

<b>Background Image</b>	<input type="button" value="None"/>	<input type="button" value="Browse"/>
<input type="text" value="C:\images\Iceberg.jpg"/>		

<b>Theme</b>	<input type="text" value="Classic"/>	<input type="button" value="v"/>
--------------	--------------------------------------	----------------------------------

Predefined themes are included in the program and you can choose between a number of style.

[Flash movie presentation !](#) 200 kb/1 sec. 56k

<input type="radio"/> Français	<input checked="" type="radio"/> English
--------------------------------	--

Set the program language.

This section lets you **Associate** the files to the program, meaning, when you double-click one of the files you associated, the program will start, with that file in the play list and play the file.

Select the file type which you would like DelMp3 Karaoke to open when you double-click on them in Explorer. Then click Associate

<input type="checkbox"/> .Kok (DelMp3 Karaoke)	<input type="button" value="Associate"/>
<input type="checkbox"/> .Kar (Midi karaoke)	
<input type="checkbox"/> .Mid (Midi)	
<input type="checkbox"/> .Mp3 (Mp3)	

**Check monthly update automatically.**

You can now check, or auto-check monthly, for updates for our software.  
If Rick has gone wild lately, downloading the update, will give you again lots of new features.

**Midi Out:**

Midi Out, let's you select different midi ports on your sound card. The Auto setting should be best for most users.

\*This is an advance option, for advanced users only.

Save modifications when you're done with the configuration.

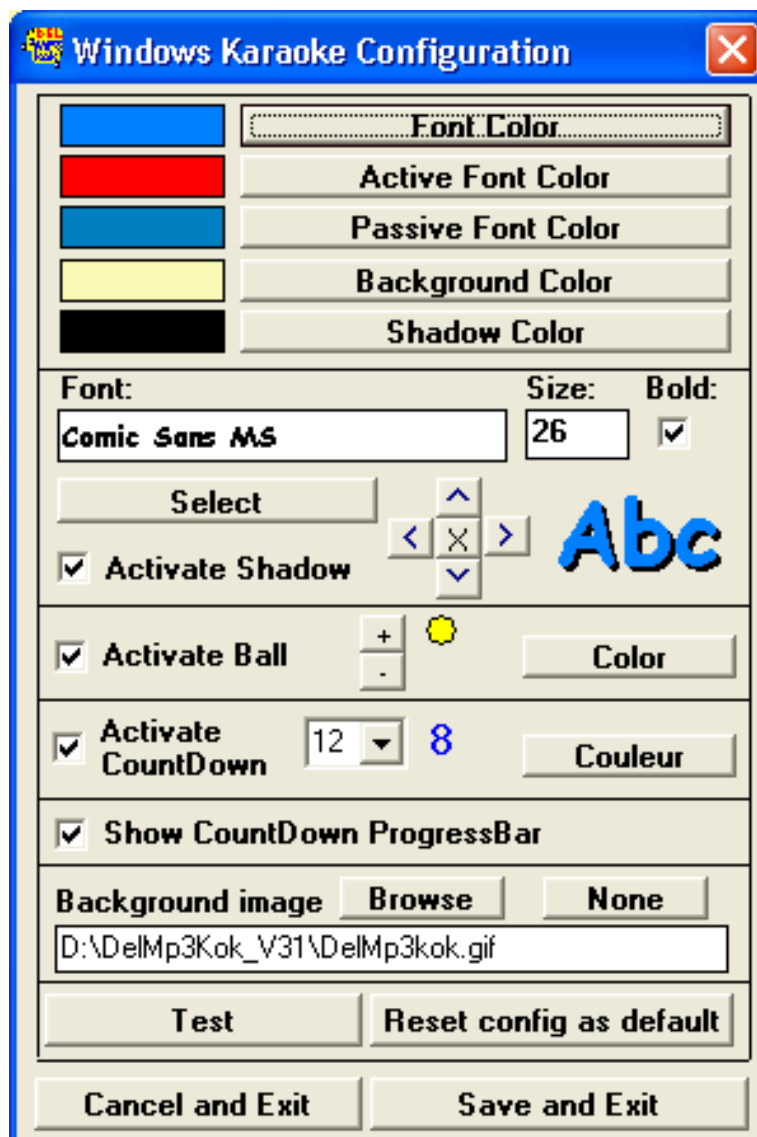
\* Click the  in the upper right corner of the window to exit without saving the mods.

End of help on basic software configurations.

---

## Karaoke Configuration

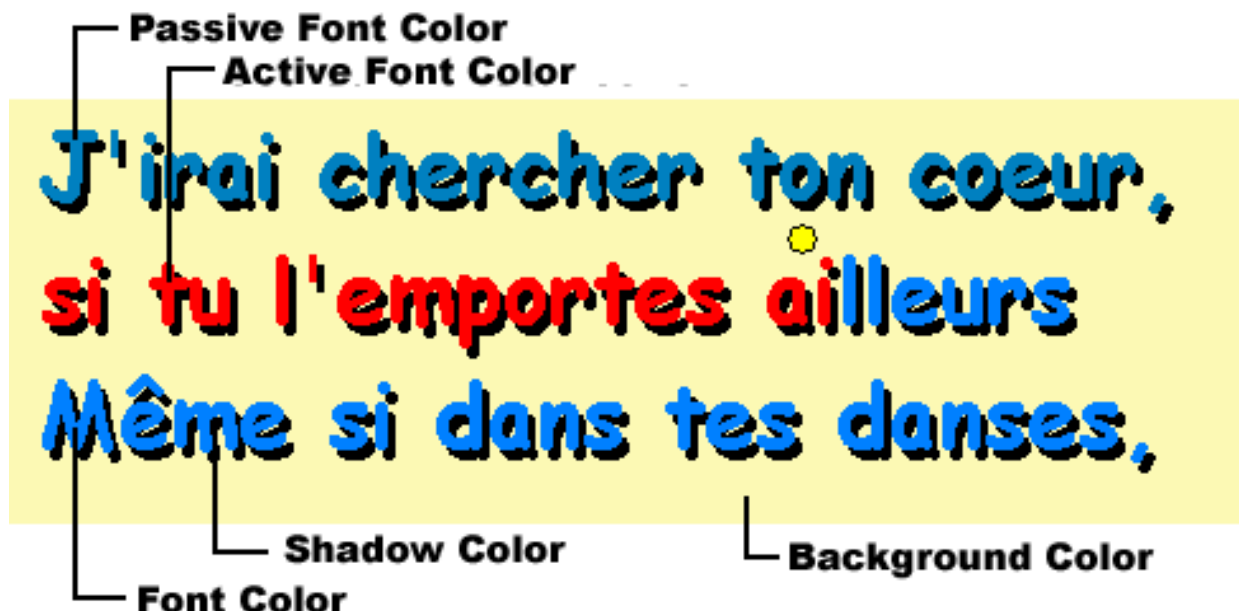




**This section let you configure the karaoke window parameters.**



**Let's you customize the colors used in the karaoke window.**



Lets you configure fonts and other karaoke window properties.



Lets you choose a new font.

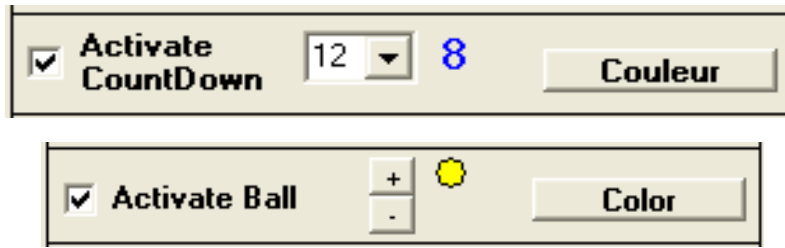


Adds a shadow effect (3D) in the background of the lyrics.



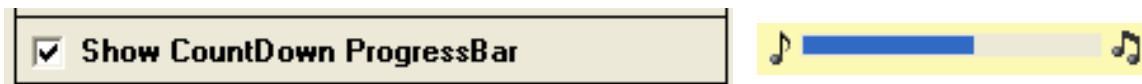
Move the shadow effect, for a more/less efect.

Activate and lets you choose size and color for a singing ball and a countdown number above the singing syllable.



The countdown will show up automaticly if there is a more then three seconds delay in the singing.

Enable a countdown bar, displayed at the top of the karaoke window, to help you synchronize with the restart of the lyrics.



This countdown bar, another visual aid, appears if there's at least a three seconds delay for the next syllable to be displayed.



**Background image** : set the path of an image as a background for the karaoke window. It can be a GIF, JPEG or Bitmap (.gif, .jpg or .bmp).



The **Test** button will preview your changes.



The **Reset** button will replace all the colors, to their default, or as they were at the program installation.

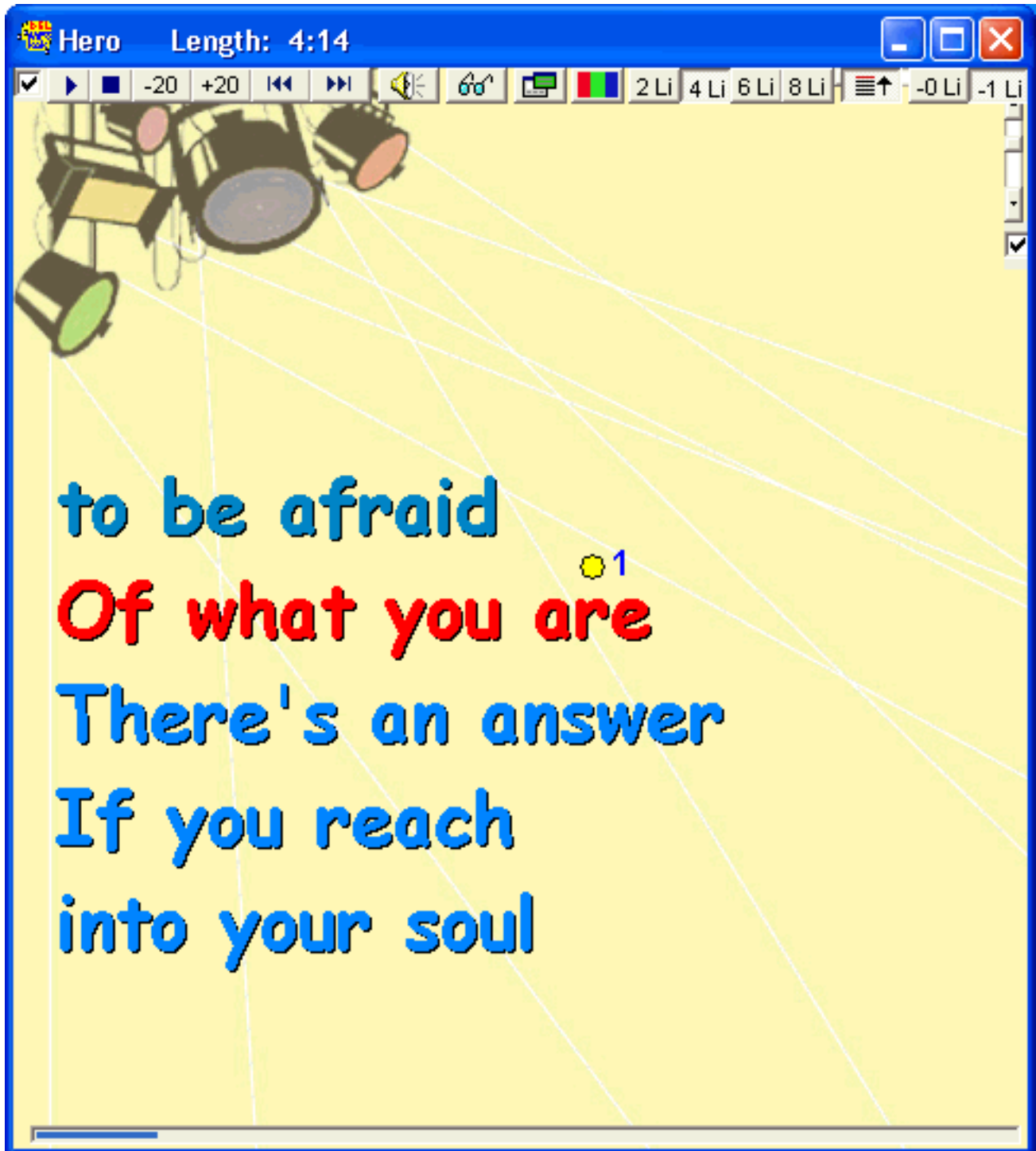


**Cancel** or **Save** modifications you've done to the configuration.

End of help on karaoke window configurations.

---

# Karaoke



**Shows the karaoke lyrics**



Uncheck this box to hide the tool bar, reverse to show it.



Control the player with these buttons.



Keep the karaoke window always on top.



Show the karaoke config window.



time).

Choose the number of line to be shown, the scroll direction and the position of the active line (the line your signing at the

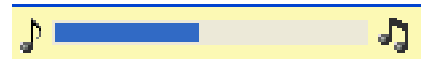
Scroll the content (lyrics) of the window horizontally. Scroll the content of the window vertically. Check this to keep the lyrics centered horizontally.



The ball follow the active syllable. A countdown appears as soon as there's at least a three seconds delay for the next syllable to be displayed.

This option can be customized in the [karaoke configuration window](#).

This countdown bar, another visual aid, appears if there's at least a three seconds delay for the next syllable to be displayed. This option can be customized in the [karaoke configuration window](#) too.



Keyboard shortcuts for the karaoke window:

- F5 : Karaoke window, 25% screen size.
- F6 : Karaoke window, 50% screen size.
- F7 : Karaoke window, 75% screen size.
- F8 : Karaoke window, full screen.
- F9 : Display a second karaoke window.
- F12 : Show/Hide the shortcuts bar in the karaoke window.





# Synchronization

To make your own karaoke, you'll have to generate it from the **editor**. Here we'll show you step by step how to generate a .kok file from a text and a music .mp3 file. These steps are basic ones, for more details and advanced fonctionnalities, to make or modify a synchronization, see our [editor section](#) of the manual.

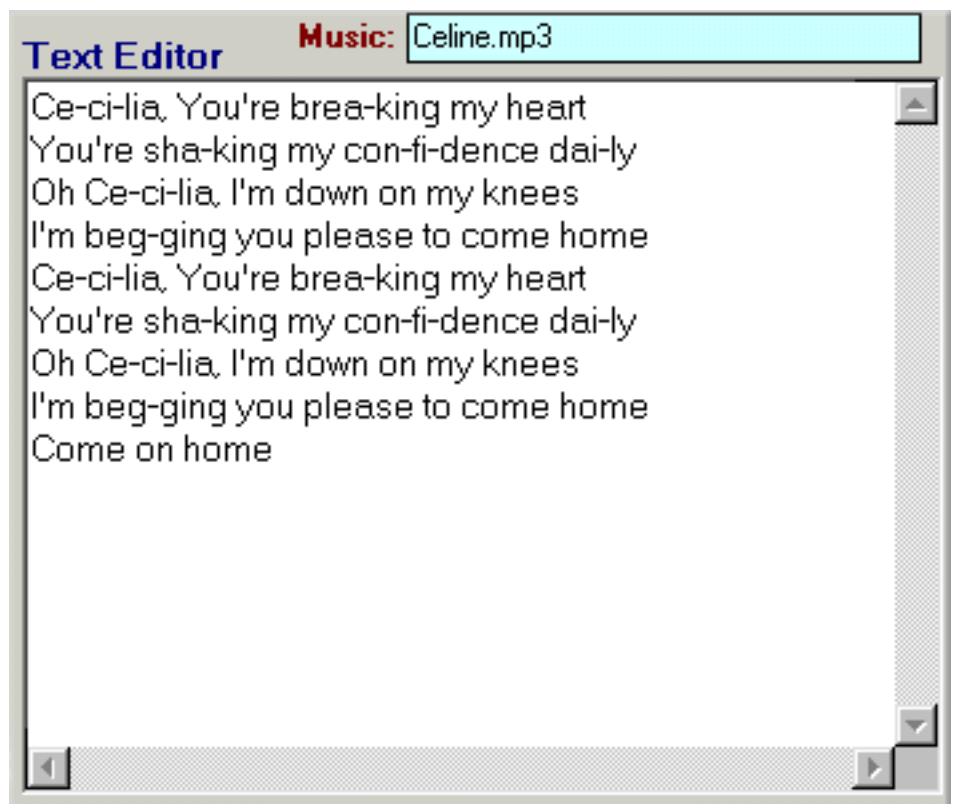


## Follow these steps...

1. Select the MP3 file of the song you want to synchronize, then click this button

**Editeur  
.Kok**

2. You must type or import the lyrics of the song in the [text editor](#).



3. Split syllables sang by '-' (dash sign).

Note : Don't make long phrases , because **lines jump** (return) in the karaoke window, are generated at each phrases end. The display will go off the depend!

You must take out each dash - and uncheck this option **Spc.**  if you don't intend to **synchronize** each syllabe, but instead **each phrase**. This brings you a simpler yet less complete synth.

4. After your done click this button.

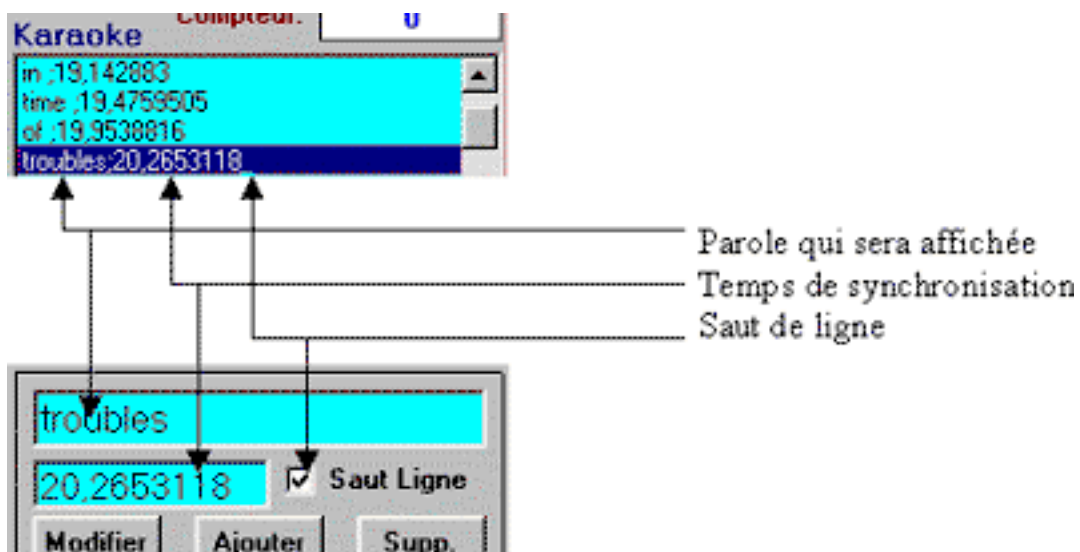


This will transfer the text to the karaoke list, breaking at each

space ( ), dash '-' and line return (or jump).

[top](#)

**Before moving on, lets review the karaoke list structure. Ouch !**



The first part (before the ; sign) are the lyric part that will display in the karaoke window. The second part (after the ; sign) is the synch time that corresponds to the MP3 timer time value.

The **;** sign at the end of the line, means that a line break (return) will occur.

When you select a line in the karaoke list, you can edit it in the bottom section. There you can, if necessary, bring corrections.

After making corrections to a line, you must click this button **Apply** for them to show in the list.

You can add a new entry (new line) by clicking this button. **Add.**

It will be added under the selected line in the karaoke list.

You can delete the selected line by clicking this button. **Delete**



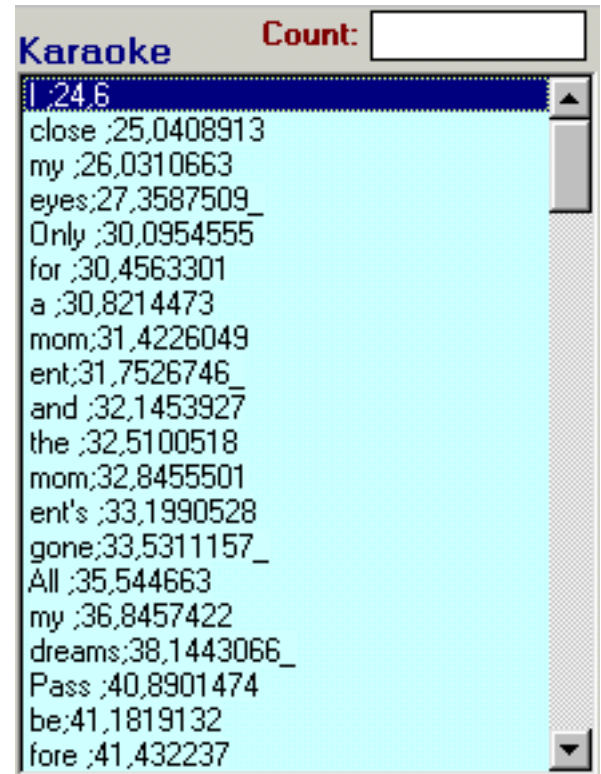
## You're now ready to synchronize a song ! Yes !

**5.** Select the first line in the karaoke list and click the play button (or simply double-click the first line). This will start the MP3 file at the specified time. In this case, the time is equal to zero, so the MP3 will start from the beginning.

This message **Space Barre pour Capture** should appear under the karaoke list. So, if you press 'space bar', the synch time will be captured and written to the selected line; and the focus will change to the next line in the karaoke list.

So just press 'space bar' each time you feel a break in the lyrics is needed.

You can also use this button. **Capturer** Come on try it, just experiment!

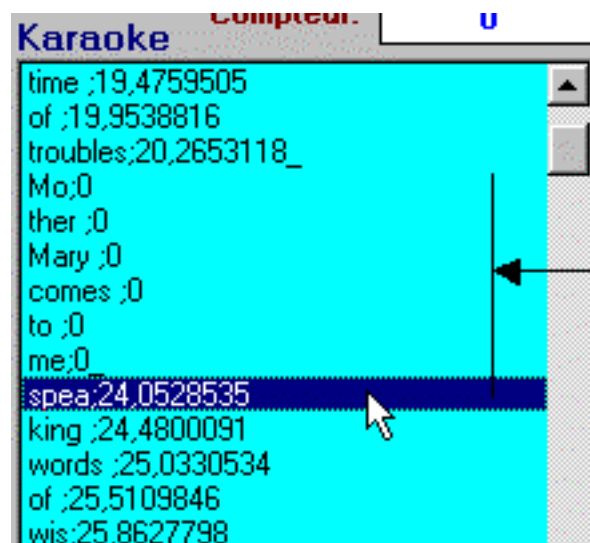


**6.** When your finished capturing each time break, you can easily make corrections to a part you feel isn't right.

Just select the line of the part of synchro you want to change and press the '.' (dot sign). It'll reset time to zero for that line. Repeat selecting lines and hitting the '.' (dot sign) for each line you wish to change.

Make sure this option

**Auto Scroll** is selected.



Section à corriger

Then double-click a line above the part your editing.

## The 'space bar' is your tool. Just a message!

The MP3 will start playing at the time of the selected line and the **auto scroll** option will make the selected line jump down line per line in the karaoke list.

When the scrolling list selects the first line you want to edit, the time of that line being zero, the scrolling will stop, waiting for you to press the space bar, to capture and write the time to the selected line in the karaoke list.

>>The above, must be read at least (2 two) times, kidding!

## Just continue synchronizing the part you wish to change.

**7.** When your changes are all done,

you must click this button  to generate a karaoke (.kok) file from the karaoke list.

[top](#)

Keep this website, a fonctionnal and dynamic one! Write us.



Visit Us at <http://www.delmp3karaoke.com>

Un logiciel conçu par, Software by: [Rick](#) © 2002. [Bernie](#) ; webmaster pour "DEL MP3 Karaoke" © 2002.