

# COREL JOINS THE BIG BOYS

The latest beta of WordPerfect Office 2000 excels in the ease of use. Here is a screen-by-screen peek at some of the new features

The Beta 3 release of Corel's WordPerfect Office 2000 is nearly complete. It includes the WordPerfect 9 word processor, the Quattro Pro 9 spreadsheet, Corel Presentations 9, Paradox 9 relational database package, CorelCentral 9 personal information management application and, for the first time, Trellix Web publishing program and NetDocs Inter-

net publishing tool.

IT Managers are likely to appreciate the Install-As-You-Go feature, which mimics the Install-on-Demand feature in Microsoft's upcoming Office 2000 Suite and allows programs and components to be installed as needed, saving hard disk space. To make the package attractive to corporate developers, Corel has used Visual Basic Appli-

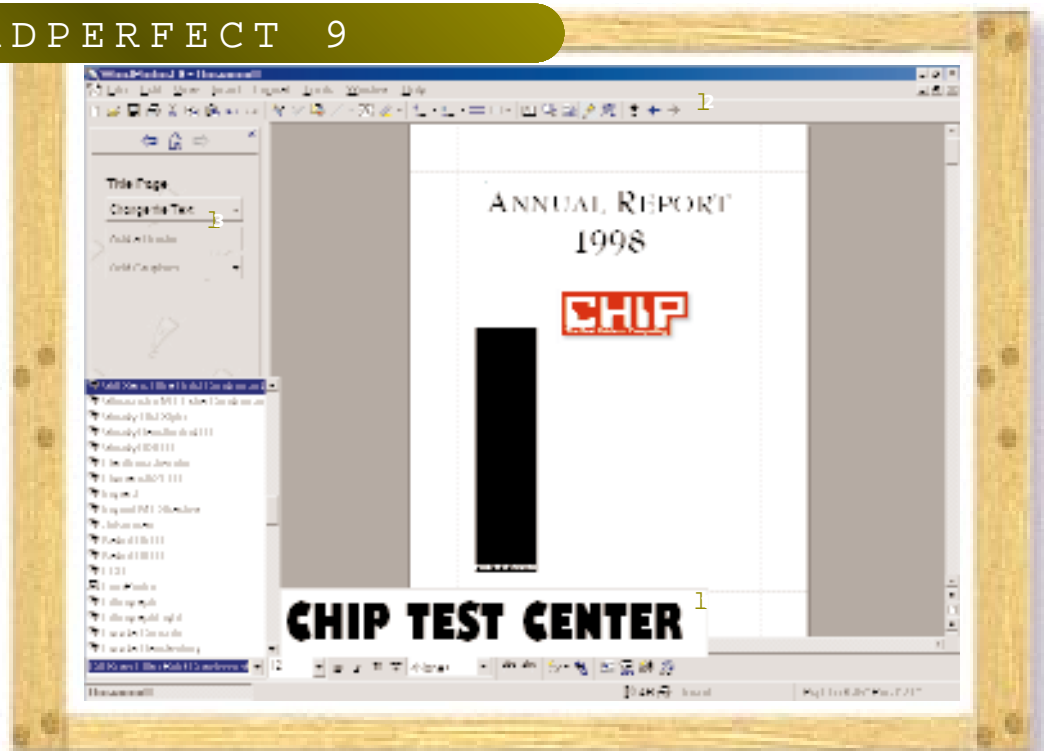
cations throughout the suite. Corel's proprietary PerfectScript macro language will provide compatibility with older versions.

The beta would have been close to 'Perfect' had Corel been able to integrate the suite with the Dragon Systems' NaturallySpeaking speech recognition application, which is supposedly included in the final version.

## WORDPERFECT 9

Helpful previews aid in creating professional-looking documents

- 1 Real-time preview features allow users to preview the formatting before applying it to the documents.
- 1 AutoScroll tool button has been added to the toolbar. It allows the user to scroll through the documents quickly.
- 1 PerfectExpert combines information from QuickTasks, templates and online help, and guides novices as well as expert users to create professional looking documents.



**W**ordPerfect 2000 aims at better compatibility with Microsoft Office and perhaps that has prompted a larger notebook for Quattro Pro. Now page-break views outline pages in blue, and changing fonts in a cell automatically

adjusts the height of a row. The new Go To dialog box offers a plethora of options such as go to cells by name, choose from a list of most recently edited cells, find the next blank cell or locked cell, or move to (and show) precedent cells.

QUATTRO PRO 9

Closer Compatibility with Excel 97

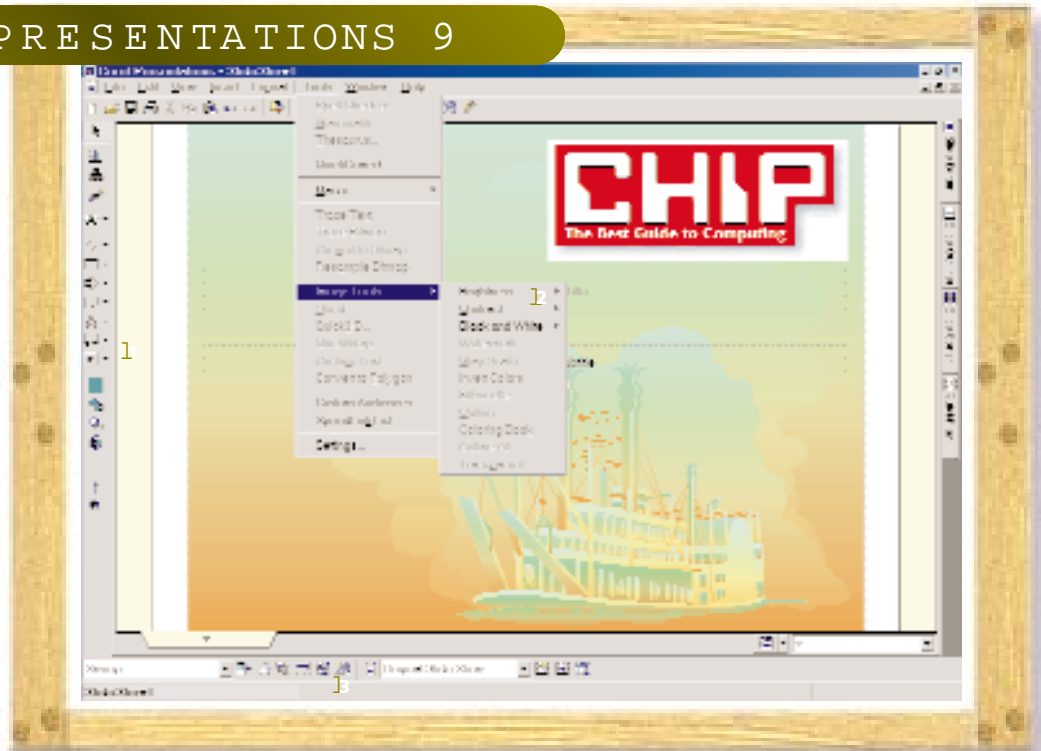
- 1 The notebook is larger and supports 1,000,000 rows, 18,278 columns, and 18,278 sheets.
- 1 The enhanced ScrapBook categorises the Clipart to allow the user fast and easy access. You can also pick up images from the Net.
- 1 Formula marker (a blue triangle in the left corner of a cell) indicates that it contains the result of a certain formula.

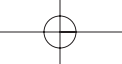


COREL PRESENTATIONS 9

Intuitive interface enhances ease of use

- 1 Users get over 100 new shapes, including basic shapes, arrows, call-outs and flow chart elements.
- 1 New Image tools such as Brightness, Contrast and Watermark allow for more innovative presentations.
- 1 The enhanced Property Bar gives quick access to frequently used features.





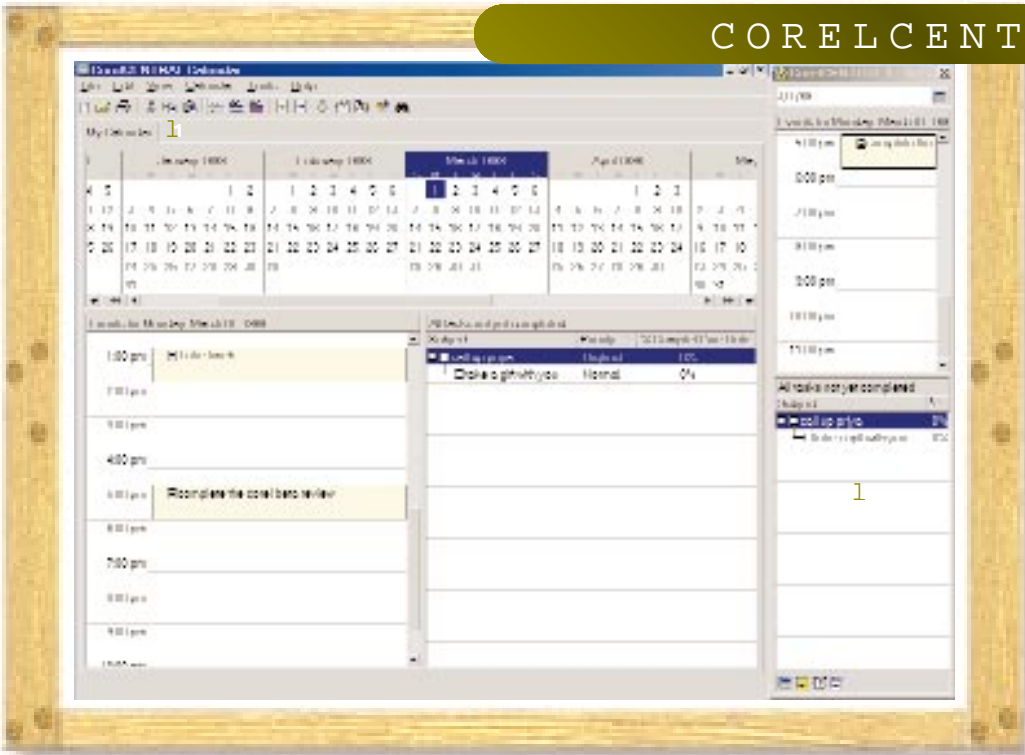
# software

## Beta Review

There are two weak links in WordPerfect 2000: Paradox and CorelCENTRAL. Paradox adds a tutorial, a visual database designer (to modify tables and links), and tabs to the Table Structure dialog box (to separate fields from table lookups,

referential integrity rules and secondary indexes). CorelCENTRAL is a calendar and address book application. CorelCENTRAL has little to recommend it over the much more sophisticated (yet easy to use) Organizer within Lotus SmartSuite.

### CORELCENTRAL



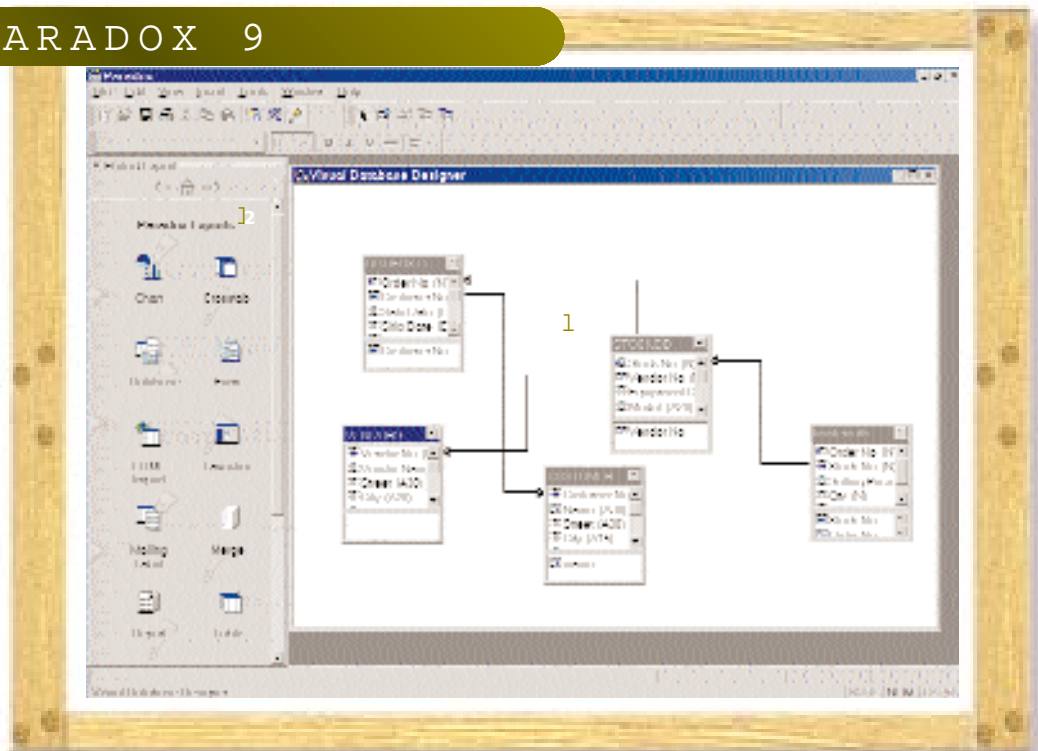
Sub-tasks make this PIM more logical

- 1 Users can view scheduled events at startup.
- 1 Sub-tasks can be created for any task or events.

### PARADOX 9

The weak link of the suite sticks out like a sore thumb

- 1 Visual Database Designer enables the users can modify tables and table links, and print the tables, fields and relationship.
- 1 PerfectExpert combines a tutorial, a help file and step-by-step instructions—providing the beginner an easy stepping stone.



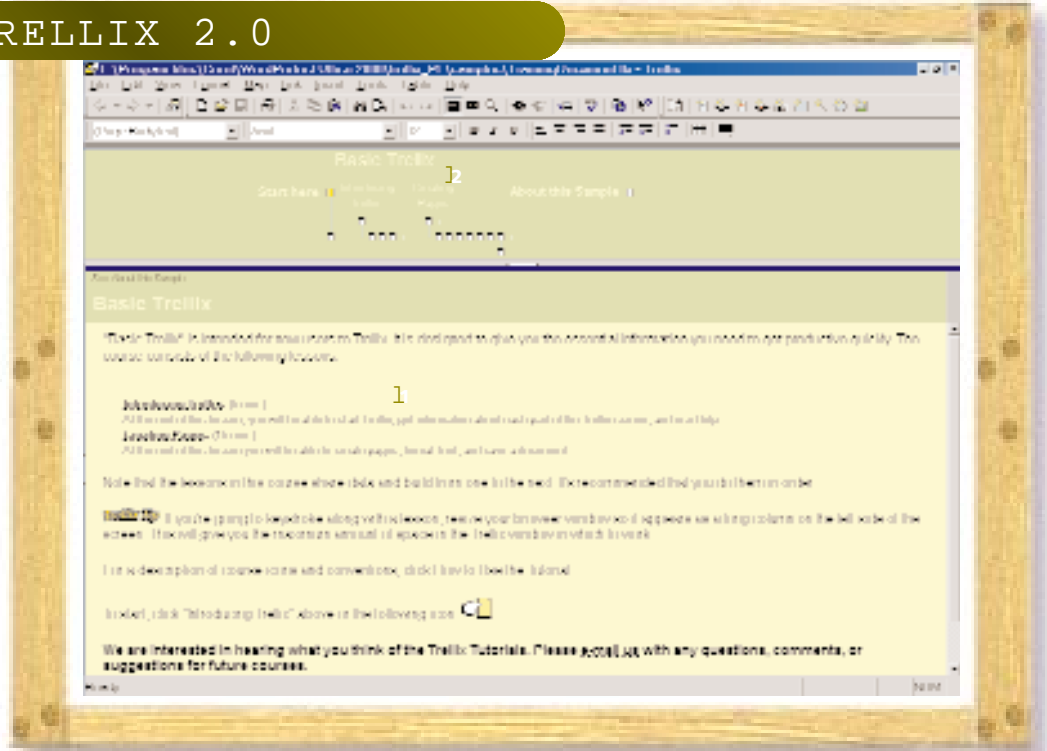
Although Corel's core applications can already save documents as HTML files, the inclusion of Trellix 2.0 in WordPerfect Office 2000 makes it easy to create linked

documents for online publishing using one of the included templates. However, access to Trellix from within the suite's other applications is still not possible.

TRELLIX 2.0

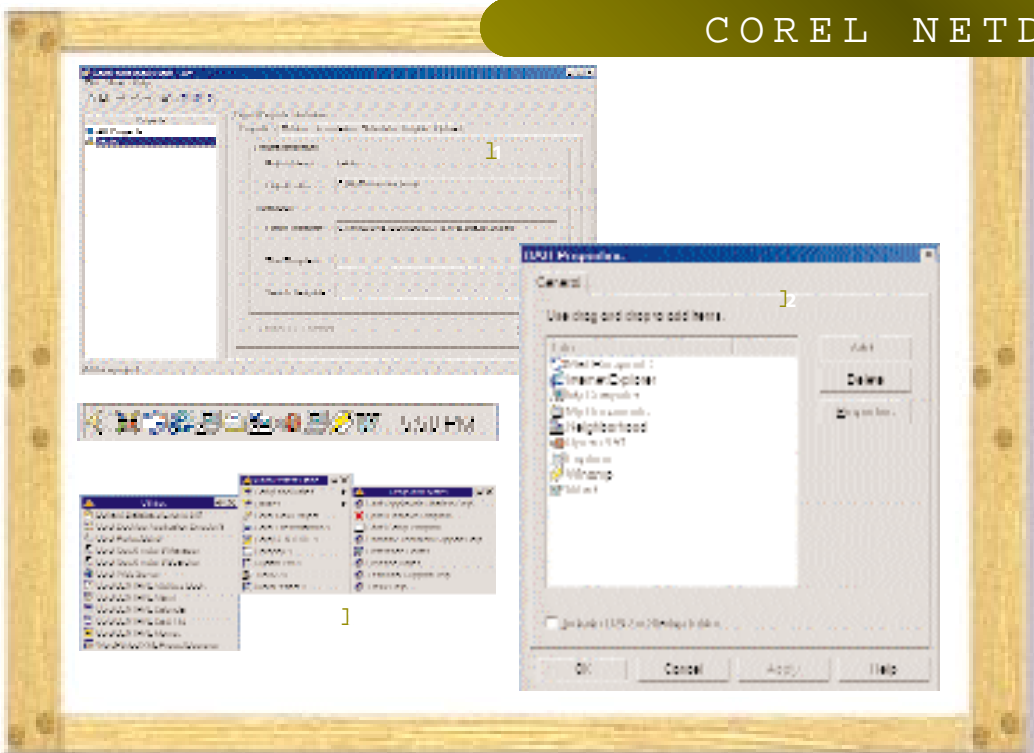
Creates linked documents for online publishing

- 1 This unique writing and document delivery bundled tool integrates a word processor, presentation graphics, many other formats and hypertext technology to help the user to visually organise information.
- 1 Helpful 'Main Map' in the upper half of the screen allows you instant access to all the pages in any Web site.



COREL NETDOCS

Intranet tool that shows constant updates



- 1 Targeted at the corporate market, Corel NetDocs automates the process of maintaining an intranet by automatically publishing documents of almost any type or extension to HTML, on a scheduled basis, or as they are updated.
- 1 DAD utility puts all applications on the System Tray.
- 1 Menus show the items added to the Program menu by WordPerfect.

CHIP TEST CENTRE