



# KONVERTOR

© 1998-1999 Jean Piquemal

## **Introduction**

[What is Konvertor ?](#)

[Install / Uninstall](#)

## **Setup**

[MP3](#)

[MPEG](#)

## **Misc...**

[The toolbars](#)

[How to configure Konvertor](#)

[Selecting files](#)

## **Informations**

[Aknowledgements](#)

*(screen captures made with Flash 32)*



## What is Konvertor ?

Konvertor is a graphic, audio, text and video files converter, easy to use and supporting many formats. It runs under Windows 95, Windows 98, Windows NT 4 and NT 5.



## **Install / Uninstall Konvertor**

The software has been installed on your disk in its folder (default is \Program Files\Konvertor). All the files used by Konvertor are in this folder. Some keys have been added in the registry under \Current User\Software\Konvertor.

To uninstall Konvertor, just click on the uninstall icon.



## The toolbars

Konvertor uses two toolbars.

### **First Toolbar:**



Prev folder



Create a new folder



Display a simple list of files



Display a detailed list

### **Second Toolbar:**



Set the current source format as the default source format



Set the current folder as the default source folder



Extract and save all the files included in the selected file.

This can occur with gif, tiff, pnm, pdf files. You don't have to know if these files contain multiples source files, Konvertor will check them.



Display the selected file



Display the setting window for the selected target format



Add all the files of the selected folder



idem, with the sub-folders



remove files from the selected files list

(if no file selected, all files are removed)



Set the current selected format as the default target format



Convert the selected files in one target file, available for some formats as dcx, gif...



Set the current target selected folder as the default target folder



Display Konvertor help (this file)



Quit Konvertor

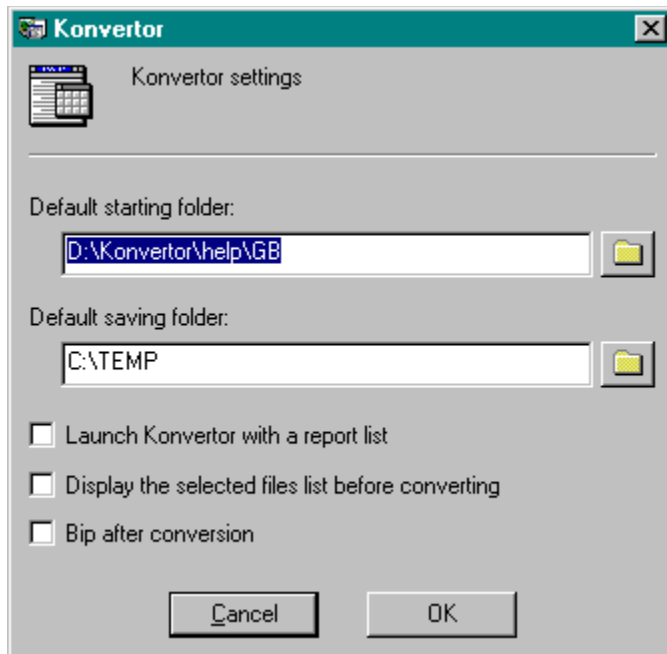


Convert the selected file(s)



## How to configure Konvertor

The configuration window is opened via the Konvertor main menu, ('Misc, then 'Settings').



**Default starting folder:** The folder used by Konvertor when it starts.

**Default saving folder:** The folder used by Konvertor to save the converted files.

**Display the selected list before converting:** A small window with the list of your selected source files will be displayed just before the conversion.

**Bip after conversion:** A bip will be emitted after each conversion.



## MP3 setup

The image shows a dialog box titled "MP3" with a teal header bar. It contains several settings and input fields. At the top right are "OK", "Cancel", and "Help" buttons. The settings include a "Samplerate" dropdown set to "44100" Hz, a "Bitrate" dropdown set to "128" Kb/s, radio buttons for "Stereo" (selected) and "Mono", and checked checkboxes for "Disable VBR tag" and "High quality". Below these are four text input fields labeled "Album:", "Song:", "Artist:", and "Comment:".

Restrictions about the WAV files:

- only 16 bits WAV files
- only WAV with a samplerate of (kHz) 16, 22.05, 24, 32, 44.1

Fields **Artist**, **Album**, **Song**, **Comment** describe the target MP3.



## MPEG setup

*This documentation comes from the MPEG Software Simulation Group*

### Aspect ratio

Defines the display aspect ratio.

### Frame rate

Defines the frame rate (for interlaced sequences: field rate is twice the frame rate). Legal values are:

Frames/sec	Meaning
24000/1001	23.976 fps -- NTSC encapsulated film rate
24	Standard international cinema film rate
25	PAL (625/50) video frame rate
30000/1001	29.97 -- NTSC video frame rate
30	NTSC drop-frame (525/60) video frame rate
50	double frame rate/progressive PAL
60000/1001	double frame rate NTSC
60	double frame rate drop-frame NTSC

### Profile ID

Specifies the subset of the MPEG-2 syntax required for decoding the sequence.

Meaning	Typical use
Main Profile	95 % of TVs, VCRs, cable applications
Simple Profile	Low cost memory, e.g. no B pictures

### Level ID

Specifies coded parameter constraints, such as bitrate, sample rate, and maximum allowed motion vector range.

Meaning	Typical use
High Level	HDTV production rates: e.g. 1920 x 1080 x 30 Hz
High 1440 Level	HDTV consumer rates: e.g. 1440 x 960 x 30 Hz
Main Level	CCIR 601 rates: e.g. 720 x 480 x 30 Hz
Low Level	SIF video rate: e.g. 352 x 240 x 30 Hz

### Color primaries

Specifies the x, y chromaticity coordinates of the source primaries.

### Transfer characteristics

Specifies the opto-electronic transfer characteristic of the source picture.

### Matrix coefficients

Specifies the matrix coefficients used in deriving luminance and chrominance signals from



the green, blue, and red primaries.

**Intra dc precision**

Specifies the effective precision of the DC coefficient in MPEG-2 intra coded macroblocks. 10-bits usually achieves quality saturation.

**Top field first**

Specifies which of the two fields of an interlaced frame comes earlier. The top field corresponds to what is often called the "odd field," and the bottom field is also sometimes called the "even field."



## Selecting files

You select files from the file list by using the mouse or keyboard.

### Using the Mouse to Select Files

You can use a mouse to select a file or group of files. Before you can select files, they must be visible in the file list.

#### To select a file:

Click the filename.

#### To select multiple items in sequence:

1. Click the first file you want to select.
2. Press the SHIFT key while you click the last file to select.

#### To select two or more file out of sequence:

Press and hold CTRL while you click on each file.

#### To cancel the selection of a file:

Press and hold CTRL while you click the selected file.

### Using the Keyboard to Select Files

You can use the keyboard to select a file or group of files. Before you can select files, they must be visible in the file list.

#### To select a file:

Use the following keys to select a file or directory.

<b>Press</b>	<b>To select</b>
Up, Down	A file above or below the current selection.
End	The last file in the list.
Home	The first file in the list.
PageUp	The file at the top of the previous screen.
PageDown	The file at the bottom of the next screen.

#### To select two or more items in sequence:

1. Use the up or down arrows to move to the first file that you want to select.
2. Press and hold down SHIFT while you select the remaining files.

#### To select two or more items out of sequence:

1. Use the arrow keys to move to the first file that you want to select.
2. Press and release Shift+F8. The selection cursor begins to blink.
3. Move to the next file that you want to select.
4. Press the SPACEBAR to select each file.
5. Press Shift+F8 when you finish selecting files.

All the files with the current format in the current folder will be converted.

You can activate a popup menu by clicking with right button of your mouse, after selecting one or more files.



## Shareware

*(This topic is for evaluation version only.)*

### **Konvertor is a shareware.**

You can freely test it for 30 days. This demonstration software is fully fonctionnal but the number of files simultaneously converted is limited to 10.

### **When you register:**

You will receive the last version of Konvertor.

### **How to buy Konvertor:**

- Send me the **register form** (called enreg.wri); it is in the install folder of Konvertor. You will receive Konvertor by mail, on diskettes.
- **Connect** to the Internet address <http://perso.wanadoo.fr/chass>  
You will be able to pay this software with a credit card in your currency with a secured server.  
You will receive your licence in the following hours.

### **Price:**

Konvertor is sold US\$ 22 each licence US\$ 1.5 for shipping if you register with the command form.

If you want some more informations send me an email at [jpiquemal@wanadoo.fr](mailto:jpiquemal@wanadoo.fr)



## Aknowledgements

Konvertor uses some parts of public softwares, listed below:

### **ImageMagick:**

Copyright 1998 E. I. du Pont de Nemours and Company

Permission to use, copy, modify, distribute, and sell this software and its documentation for any purpose is hereby granted without fee, provided that the above copyright notice appear in all copies and that both that copyright notice and this permission notice appear in supporting documentation, and that the name of E. I. du Pont de Nemours and Company not be used in advertising or publicity pertaining to distribution of the software without specific, written prior permission. E. I. du Pont de Nemours and Company makes no representations about the suitability of this software for any purpose. It is provided "as is" without express or implied warranty. E. I. du Pont de Nemours and Company disclaims all warranties with regard to this software, including all implied warranties of merchantability and fitness, in no event shall E. I. du Pont de Nemours and Company be liable for any special, indirect or consequential damages or any amages whatsoever resulting from loss of use, data or profits, whether in an action of contract, negligence or other tortious action, arising out of or in connection with the use or performance of this software.

### **JPEG:**

The authors make NO WARRANTY or representation, either express or implied, with respect to this software, its quality, accuracy, merchantability, or fitness for a particular purpose. This software is provided "AS IS", and you, its user, assume the entire risk as to its quality and accuracy.

This software is copyright (C) 1991-1997, Thomas G. Lane.  
All Rights Reserved except as specified below.

Permission is hereby granted to use, copy, modify, and distribute this software (or portions thereof) for any purpose, without fee, subject to these conditions:

- (1) If any part of the source code for this software is distributed, then this README file must be included, with this copyright and no-warranty notice unaltered; and any additions, deletions, or changes to the original files must be clearly indicated in accompanying documentation.
- (2) If only executable code is distributed, then the accompanying documentation must state that "this software is based in part on the work of the Independent JPEG Group".
- (3) Permission for use of this software is granted only if the user accepts full responsibility for any undesirable consequences; the authors accept NO LIABILITY for damages of any kind.

### **PBMPlus:**

*\*\* Copyright (C) 1991 by Steve Belczyk and Jef Poskanzer.*

Permission to use, copy, modify, and distribute this software and its documentation for any purpose and without fee is hereby granted, provided that the above copyright notice appear in all copies and that both that copyright notice and this permission notice appear in

supporting documentation. This software is provided "as is" without express or implied warranty.

## **PNG:**

\* COPYRIGHT NOTICE:

\*

\* The PNG Reference Library is supplied "AS IS". The Contributing Authors and Group 42, Inc. disclaim all warranties, expressed or implied, including, without limitation, the warranties of merchantability and of fitness for any purpose. The Contributing Authors and Group 42, Inc. assume no liability for direct, indirect, incidental, special, exemplary, or consequential damages, which may result from the use of the PNG Reference Library, even if advised of the possibility of such damage.

\* Permission is hereby granted to use, copy, modify, and distribute this source code, or portions hereof, for any purpose, without fee, subject to the following restrictions:

\* 1. The origin of this source code must not be misrepresented.

\* 2. Altered versions must be plainly marked as such and must not be misrepresented as being the original source.

\* 3. This Copyright notice may not be removed or altered from any source or altered source distribution.

\* The Contributing Authors and Group 42, Inc. specifically permit, without fee, and encourage the use of this source code as a component to supporting the PNG file format in commercial products. If you use this source code in a product, acknowledgment is not required but would be appreciated.

## **ZLIB :**

Copyright (C) 1995-1996 Jean-loup Gailly and Mark Adler


This software is provided 'as-is', without any express or implied warranty. In no event will the authors be held liable for any damages arising from the use of this software.


Permission is granted to anyone to use this software for any purpose, including commercial applications, and to alter it and redistribute it freely.


## **Fonts**


The following notice accompanied the Utopia font:..%..% Permission to use, reproduce, display and distribute the listed..% typefaces is hereby granted, provided that the Adobe Copyright notice..% appears in all whole and partial copies of the software and that the..% following trademark symbol and attribution appear in all unmodified..% copies of the software:..%..% Copyright (c) 1989 Adobe Systems Incorporated..% Utopia (R)..% Utopia is a registered trademark of Adobe Systems Incorporated..%..% The Adobe typefaces (Type 1 font program, bitmaps and Adobe Font..% Metric files) donated are:..%..% Utopia Regular..% Utopia Italic..% Utopia Bold..% Utopia Bold Italic..../Utopia-Regular..(putr.pfa);../Utopia-Italic..(putri.pfa);../Utopia-Bold..(putb.pfa);../Utopia-BoldItalic..(putbi.pfa);....% ...%..% Fonts contributed by URW GmbH for distribution under the GNU License..

List of target file formats supported.

Click on  to configure the selected format.

Click on  to set the default target file format.

Click on  to gather the selected source files into one target file of the specified target format.

Target folder, where the converted files will be saved.  
Click on  to select another folder.

Display the target folder selection window.





Converts the selected file to the selected target format.



Default source format.



Set the default source folder.



Extracts and converts all the files from the selected source file.  
(available for gif, tiff or mng formats)



This button launches the conversion of the selected files.



Saves the new file with the read-only attribute.



Default save folder.

This button is activated when the selected format allows options.  
Click this button to display the settings window for the selected format

Selected files list.

Select files in the list at the left side of the window by double-clicking on them or drag them with your mouse to the list.

