

Welcome to

Welcome to **Quick View Plus for Windows 95**. If you have not already done so, please register to receive free technical support and discounts on future versions of *Quick View Plus*. You can fax or mail the enclosed form or, if you have a modem, you can register electronically. If you are using the US Trial Edition of *Quick View Plus* you will automatically be registered when you purchase the product electronically.

This document includes information on what's new in this version, contact information for Inso Corporation, last minute technical notes, and a list of the file formats that *Quick View Plus* supports. More technical information can be found in the user's manual, and the Help system.

This document is only viewed when *Quick View Plus* is installed. If you wish to view it at a later time, it is README.DOC in the directory where you installed *Quick View Plus*.

➤ What's New

Quick View Plus release 3.0.3 includes Netscape Navigator 2.0 plug-in support for all Quick View Plus supported formats. Navigator uses plug-ins to view files in formats that it does not understand. Plug-ins are used when you click on a link to a file that isn't a normal web page, when a web page has a file embedded in it, and when you receive attachments in Netscape mail.

Individual users can use plug-ins as an alternative to setting up many different Helper Applications for file formats like ZIP, Microsoft Word, Tar, and all the other formats Quick View Plus supports.

Corporations can use plug-ins to publish non-HTML files on their corporate intranets. This saves Webmasters the time, money and headache of manually converting everything to HTML.

Technical notes and additional information on ways to use Quick View Plus's plug-ins are available in the document NETSCAPE.DOC.

➤ Contact Information

In North America
Inso Corporation

401 North Wabash Suite 600 Chicago, Illinois 60611	
Support	312-527-HELP
General	312-329-0700
Fax	312-670-0820
World Wide Web site	www.inso.com
Support Email	supportchi@inso.com
Sales Email	saleschi@inso.com

In Europe	
Inso Corporation Ltd. Woodcock House Gibbard Mews, High Street Wimbledon Village SW19 5BY UK	
Phone	(44) 181 947 1122
Fax	(44) 181 947 1810
Email	europa.inso.com

➤ Important Technical Notes

Using Quick View Plus as a helper application for Internet browsers and tools

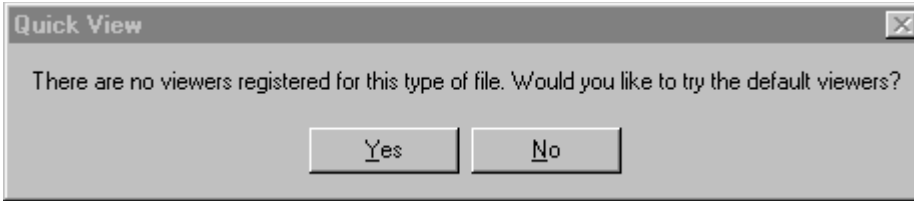
Quick View Plus finds and integrates itself with some of the most popular Internet World Wide Web browsers. However there are a number of other browsers and tools (like FTP clients and News Readers) that also have an option to setup a file viewer or viewers. To use Quick View Plus as your viewer with these applications, simply enter the full path to QVP32.EXE where the tool requests the name of the viewer application. If you installed Quick View Plus in the default location, this path will be

`C:\progra~1\quickv~1\programs\qvp32.exe`

Please note that unless your application is long file name aware you must enter the short version of the path, like the one above.

Installing Quick View after installing Quick View Plus.

If you install the Windows 95 Quick View feature after installing Quick View Plus, two problems will appear. The first is that both "Quick View" and "Quick View Plus" will appear on the context menus of many files. The second is that using Quick View Plus on an attachment in Exchange will bring up a message box like the one below.



Clicking Yes brings up Quick View Plus. This message box is currently unavoidable because of the way Exchange and Windows 95 work together. To fix both these problems, reinstall Quick View Plus.

Drag and drop problems

There are a number of places where dragging and dropping text or graphics from Quick View Plus does not work. These problems always come down to differences between the formats we can produce and the formats that the application being dropped on expects.

Examples of this include drag and drop of images (bitmaps or drawings) onto applications like Word and drag and drop of text into an Exchange mail message. In both these cases, the applications are not accepting the formats we provide, even though they accept the same formats from the clipboard. Another place you will see drag and drop fail is dropping text or graphics onto the desktop. The desktop requires that the dropped object be a file (like a Word or WordPerfect document), since we do not supply a file to the desktop, the drop does nothing.

In the future, work on our part and on the applications vendors parts will increase the number of places that can be successfully dropped on.

Lockup when using Send if Exchange not installed

Generally, if Exchange is not installed, the File/Send menu item will not be available. However it is possible to get your system into a state where Exchange is not installed but your programs (including Quick View Plus) think that it is. Using the File/Send menu item when in this state will lock up the program. This is a Windows 95/Exchange problem which will hopefully be fixed in a maintenance release of Windows 95.

➤ Supported File Formats

Document formats	
Ami / Ami Professional	Versions through 3.1
DEC WPS Plus (DX)	Versions through 4.1
DisplayWrite 2 & 3 (TXT)	All versions
DisplayWrite 4 & 5	Versions through Release 2.0
Enable	Versions 3.0, 4.0 and 4.5
First Choice	Versions through 3.0
Framework	Version 3.0
HTML (Internet World Wide Web)	Versions through 3.0

IBM FFT	All versions
IBM Revisable Form Text	All versions
IBM Writing Assistant	Version 1.01
JustWrite	Versions through 3.0
Legacy	Versions through 1.1
MacWrite II	Version 1.1
Manuscript	Version 2.0
MASS11	Versions through 8.0
Microsoft Rich Text Format	Versions through 2.0
Microsoft Windows Write	Versions through 3.0
Microsoft Word for DOS	Versions through 6.0
Microsoft Word for Macintosh	Versions 4.0 through 6.0
Microsoft Word for Windows	Versions through 7.0
Microsoft Works for DOS	Versions through 2.0
Microsoft Works for Macintosh	Versions through 2.0
Microsoft Works for Windows	Versions through 4.0
MultiMate	Versions through 4.0
Navy DIF	All versions
Nota Bene	Version 3.0
Office Writer	Version 4.0 to 6.0
PC-File Letter	Versions through 5.0
PC-File+ Letter	Versions through 3.0
PFS:Write	Versions A, B, and C
Plain Text (including ASCII, ANSI, Unicode)	n/a
Plain Text with UUEncoded objects	n/a
Professional Write	Versions through 2.1
Professional Write Plus	Version 1.0
Q&A	Version 2.0
Q&A Write for Windows	Version 3.0
Samna Word	Versions through Samna Word IV+
SmartWare II	Version 1.02
Sprint	Versions through 1.0
Total Word	Version 1.2
Volkswriter 3 & 4	Versions through 1.0
Wang PC (IWP)	Versions through 2.6
WordMARC	Versions through Composer Plus
WordPerfect	Versions through 6.1
WordPerfect for Macintosh	Versions 1.02 through 3.0
WordPerfect for Windows	Versions through 6.1
WordStar	Versions through 7.0

WordStar 2000	Versions through 3.0
WordStar for Windows	Version 1.0
XyWrite	Versions through III Plus
Spreadsheet formats	
Enable	Versions 3.0, 4.0 and 4.5
First Choice	Versions through 3.0
Framework	Version 3.0
Lotus 1-2-3 Charts for DOS & Windows	Versions through 5.0
Lotus 1-2-3 Charts for OS/2	Versions through 2.0
Lotus 1-2-3 for DOS & Windows	Versions through 5.0
Lotus 1-2-3 for OS/2	Versions through 2.0
Lotus Symphony	Versions 1.0,1.1 and 2.0
Microsoft Excel Charts	Versions 3.0 - 7.0
Microsoft Excel for Macintosh	Versions 3.0 - 4.0
Microsoft Excel for Windows	Versions 2.2 through 7.0
Microsoft Multiplan	Version 4.0
Microsoft Works for DOS	Versions through 2.0
Microsoft Works for Macintosh	Versions through 2.0
Microsoft Works for Windows	Versions through 4.0
Mosaic Twin	Version 2.5
PFS:Professional Plan	Version 1.0
QuattroPro for DOS	Versions through 5.0
QuattroPro for Windows	Versions through 6.0
SmartWare II	Version 1.02
SuperCalc 5	Version 4.0
VP Planner 3D	Version 1.0
Database formats	
Access	Versions through 2.0
DataEase	Version 4.0
dBASE	Versions through 5.0
dBXL	Version 1.3
Enable	Versions 3.0, 4.0 and 4.5
First Choice	Versions through 3.0
FoxBase	Version 2.1
Framework	Version 3.0
Microsoft Works for DOS	Versions through 2.0
Microsoft Works for Macintosh	Versions through 2.0
Microsoft Works for Windows	Versions through 4.0
Paradox for DOS	Versions through 4.0
Paradox for Windows	Versions through 1.0
Personal R:BASE	Version 1.0

Q & A	Versions through 2.0
R:BASE	Versions through 3.1
R:BASE System V	Version 1.0
Reflex	Version 2.0
SmartWare II	Version 1.02
Graphic formats	
Ami Draw (SDW)	n/a
AutoCAD DXF (Binary and ASCII)	Versions 12 and 13
Binary Group 3 Fax	All versions
CompuServe GIF	All versions
Computer Graphics Metafile	n/a
Corel Draw (TIFF header only)	Versions 2.0 through 5.0
DCX (multi-page PCX)	n/a
Encapsulated PostScript (TIFF header only)	n/a
GEM Paint (IMG)	n/a
HPGL Hewlett Packard Graphics Language	Version 2
JPEG	All versions
Lotus PIC	n/a
Lotus Snapshot	All versions
Macintosh PICT1 & PICT2 (Bitmap only)	n/a
MacPaint	n/a
Micrografx Designer and Draw (DRW)	Versions through 4.0
OS/2 Bitmap	All versions
PCX (Paintbrush)	All versions
TIFF	Versions through 6
TIFF CCITT Group 3 & 4	Verisons through 6
Truevision TGA (TARGA)	Version 2.0
Windows Bitmap	All versions
Windows Cursor	All versions
Windows Icon	All verisons
Windows Metafile	Versions through 3.1
WordPerfect Graphics [WPG and WPG2]	Versions through 2.0
Presentation formats	
Freelance for OS/2	Versions through 2.0
Freelance for Windows	Version 2.0
Harvard Graphics for DOS	Versions 2.x & 3.x
Microsoft PowerPoint for Macintosh	Version 4.0
Microsoft PowerPoint for Windows	Versions through 7.0
Compressed and collection formats	
Microsoft Binder	Version 7.0
Unix Compress	n/a

Unix TAR	n/a
ZIP	PKWARE versions through 2.04g
Other formats	
DOS EXE	All versions
Windows 16bit EXE or DLL	All versions
Windows 32bit EXE or DLL	All versions