

Contents

Introduction

Frequency Ask Question.....

Whats EasyCals Interface?

How To Register EasyCal

What is Shareware

License Agreement

Why should I Register

[Disclaimer of warranty](#)

NO WARRANTIES. The author expressly disclaims any warranty for the SOFTWARE. The SOFTWARE and any related documentation provided as is without warranty of merchantability or fitness for a particular purpose. The entire risk arising out of use or performance of the SOFTWARE remains with you.

CUSTOMER REMEDIES. The author entire liability and your exclusive remedy shall not exceed the price paid for the SOFTWARE.

NO LIABILITY FOR CONSEQUENTIAL DAMAGES. In no event shall the author be liable for any damages, whatsoever (expressed or implied, including, without limitation, the warranties of merchantability and of fitness for any purpose, damages for loss of business profit, business interruption, loss of business information, or any other pecuniary loss) arising out of the use or inability to use this SOFTWARE product.

Introduction

EasyCal™ is mainly design for any CAD Drawing; Accounting; Spreadsheet and any other application that calculations are needed.. It has some feature that will fit in daily use.

EasyCal™ is an easy and convenient to use a calculator when working in Windows™ Version 3.1 and higher. It comes with a metric converter that can let user to perform metric calculation easier. With its stay on top feature, user can access EasyCal™ in any application you are currently using, and there is no need to press the ALT-ESC or ALT-Tab to switch form one application to calculator again and again.

EasyCal™ can also let you display the date and the time in various format when EasyCal™ is in its minimize mode.

EasyCal™ have an option that let you link EasyCal™ to the application you are currently working on and send the date, time, and/or calculation result to the linked application automatically. If your application accept keyboard input, it will work fine with EasyCal™.

You can Press [F1] anytime if you need help, EasyCal™ will show you with the relative topic of the current screen.

Tooltips to let you easy understand what these buttons stand for, and make you working with EasyCal™ fast and easy.

What is Shareware

"Shareware" is copyrighted software which is distributed by authors through bulletin boards, on-line services, disk vendors, and copies passed among friends. It is commercial software that you are allowed to try out before you pay for it.

Shareware authors use a variety of licensing restrictions on their copyrighted works, but most authors who support their software require you to pay a "registration fee" -- the purchase price of the software -- if you continue to use the product after a trial period. Some authors indicate a specific trial period after which you must pay this fee; others leave the time period open and rely on you to judge when you have decided to use the program, and therefore should pay for it.

The shareware system and the continued availability of quality shareware products depend on your willingness to register and pay for the shareware you use. The registration fees you pay allow authors to support and continue to develop their products.

Frequency Ask Question.....

How do I move EasyCal™ to the location I really want while its in Calculation Mode?

How do I move EasyCal™ to the location I really want while its in Minimize Mode?

How do I change the date and time display format, if I dont like the display formats that EasyCal™ currently used?

How do I link EasyCal™ to the application I am currently working on, and what is the difference between Manual and Automatic mode? How do they work?

After I select my word processor to linked with EasyCal™, why does it sometimes display an error message that says Link Error, change the link mode to manual, and tell me to re-link again. Why does this happen and what shall I do?

EasyCal™ always send the result to my application, if I just want to perform calculation without having the result send to my application, what should I do?

I had already linked my application with EasyCal™, why didnt it send the result to my application automatically?


Please make sure the Automatic Paste Option was selected, because EasyCal™ will only send the result to the linked application when the Automatic Paste Option was selected, otherwise it will send the result to Clipboard only.

You can have two method to use, depend on what you want to do.

1. Temporary disable the automatically send result function.

In the Option Setup Windows, you can see the option Enable Paste/Linking, uncheck this to temporarily disable EasyCal™ to send result to the linked application.


2. Send the result to clipboard

In the Option Setup Windows, click on the  button to display the Task List Window, select the Manual Paste option, and now EasyCal™ will only send the result to the clipboard and not to your application.

To move EasyCal™ is simple, when you point the mouse cursor on the empty space next to Option Button; the mouse cursor will change to the move mode. Now, you can move EasyCal™ by press down and hold the left mouse button, and move to your desired position.. EasyCal™ will move to any place you want. If you are satisfied with the new location, release the mouse button and EasyCal™ will remember this location and stay at this place until you move it again.

If EasyCal™ is in Minimize Mode, you can point the mouse cursor to any edge of EasyCal Button, and press down and hold the left mouse button. Although the cursor will not change, but EasyCal™ is ready for you to move it to any location you desire. If you are satisfied with the location, release the mouse button and EasyCal™ will remember this location and stay at this place until you move it again.

To change the display format, just point to  and click the right mouse button, the Display Option windows will show up, and now you can select the display format you want.

To link EasyCal™ to your working application is easy, whether you are in minimize or calculation mode. You can set linking application by clicking the  button, EasyCal™ will show a task window and it let you select the application that is currently running under Windows™. Session.

Manual mode: - EasyCal™ will send the calculation result to clipboard, you can use the paste command in your application.

Automatic mode - EasyCal™ will send the calculation result direct to the linked application at the cursor position.

If your word processor or application you linked with EasyCal™ allows working with multiple files or documents, you can properly linked to one of the files you are working currently. If this time you switch to another files or save the file to another name, EasyCal™ will lose its link target, so it displays a message to tell you re-link your application to EasyCal™ again.

How to Register EasyCal™

To register EasyCal™, click on the Register Button from the Option Setting window, EasyCal™ will display a Registration information Window just follow the instruction to enter your information, and print it right away. Sent the registration form with Money Order or Check payable to **RICKY LAU SIU FAI** as the address shown at the top of registration form.. All the Money Order or Check should all be in Canadian funds and drawn on Canada Bank.

If EasyCal™ can not print the registration form , it may be your printer driver is not compatible with EasyCal™. In this case, you can also print the registration form **REGFORM.TXT** using your favourite editor and fill in the information. You can tell us what brand of your printer is , and we will try to make it works with it in future EasyCal™ releases. To make you feel CONVIENCE AND COMFORTABLE is our goals.

There are three Version of EasyCal™ you can register as:

- 1) Register Version - We will only send you a register serial code with a license agreement between you (End User) to us (The author) without any diskette.
Price : - CAD\$15.00
S&H : - US & Canada CAD\$5.00 / Internation CAD\$8.00
Screen Saver : - CAD\$3.00 for diskette and Shipping & Handling.
- 2) Disk Version - We will send you the most update version and personalize it with your name as its register user. A diskette in 3-1/2 size with 1.44mb format is included. With a license agreement between you (End User) to us (The author)
Price : - CAD\$20.00
S&H : - US & Canada CAD\$5.00 / Internation CAD\$8.00
Screen Saver : - Free of Charge and will be included in the enclosed diskette.
- 3) Site License Version : - This version is the discount base version. We will send you the most up-to-date version and personalize it with your company name as its register user. A diskette in 3-1/2 size with 1.44mb format is included. With a license agreement between you (End User) to us (The author). You can use this diskette to install multiple copies as the numbers shown in license agreement that you are registered.
Price : - Workgroup Version (2 - 10 Users) CAD\$12.00/User
Company Version (11 - 50 Users) CAD\$10.00/User
Enterprise Version (51 User and Up) CAD\$8.00/User.
S&H : - US & Canada CAD\$5.00 / Internation CAD\$8.00
Screen Saver : - Free of Charge and will be included in the enclosed diskette.

A copyrighted software is one where the author has asserted his or her legal right to control the program's use and distribution by placing the legally required copyright notices in the program and documentation. The law gives copyright owners broad rights to restrict how their work is distributed, and provides for penalties for those who violate these restrictions.

EasyCal Monday 12 February, 1996 09:35:01 pm

EasyCal™ Version 1.0

Click to the location that you want to know more information about it.

EasyCal Monday 12 February, 1996 09:35:01 pm

Click left button to return EasyCal™ to calculation mode.
Click right button to display the display setting window.

Show you the current date with format you selected in display setting windows. Click right button will automatically send the current date to linked application as the same format displayed..

Show you the current time with format you selected in display setting windows. Click right button will automatically send the current time to linked application as the same format displayed.

Press and hold the left button on any edge of EasyCal™, you can move to the location where you want. EasyCal will remember and anchor here until you move it again.

EasyCal™ Version 1.0

Click to the location that you want to know more information about it.



Button Definition.



Memory Cancel Button - Press this button will reset the memory value to ZERO. (You can press [END] key)



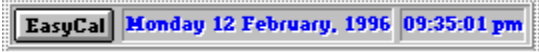
Memory Remember Button - Press this button will display the memory value in result panel. (You can press [HOME] key)



Memory Minus Button - Press this button will minus the result in Result Panel from memory value. (You can press [DELETE] key)



Memory Plus Button - Press this button will add the result in Result Panel to memory value. (You can press [INSERT] key)



Cancel Button - Press this button will reset the result in Result Panel to ZERO and start a new calculation. (You can press [PAGE UP] or [ESC] key)



Cancel Error Button - Press this button if you enter a wrong number, EasyCal™ will return the last calculation value for you to working again. (You can press [PAGE DOWN] key)



Back Button - Press this button will backward one digit space, its helpful when you entering a long number and prevent you to reenter again from error.(You can press [Backspace] Key)

EasyCal Monday 12 February, 1996 09:35:01 pm

(Hotkey - [END] key)

EasyCal Monday 12 February, 1996 09:35:01 pm

(Hotkey -[HOME] key)

EasyCal Monday 12 February, 1996 09:35:01 pm

(Hotkey -[DELETE] key)

EasyCal Monday 12 February, 1996 09:35:01 pm

(Hotkey -[INSERT] key)

EasyCal Monday 12 February, 1996 09:35:01 pm

(Hotkey -[PAGE UP] or [ESC] key)


CE

(Hotkey -[PAGE DOWN] key)

Back

(Hotkey -[Backspace] Key)

This is Result Panel to show the calculation result. If the Paste Link option of EasyCal™ is enabled, this result will

paste to the linked application when  or




are pressed in Automatic Link Mode.

If there is a red spot in Result Panel, that mean you have memory value in EasyCal™

Number pad, you can use either mouse or keyboard to input.

Operation Button

Act as traditional calculator button, but the  and



have different meanings. When the Paste/Linking mode is enabled. Press these two buttons will cause EasyCal™ to send the calculation result to Clipboard in Manual Link Mode and sent the calculation result to Linked Application in Automatic Link Mode.

If you point the mouse here, the mouse pointer will change to move mode. You just press down and hold left button, now you can move EasyCal™ to any location you like. Release the mouse button when satisfied, EasyCal™ will remember this location and anchor here until you move it again.

Click this button will turn EasyCal™ to a small floating button bar.
It has the option to show you current date and time.

Click this button will display an option setting windows that let you customize EasyCal™.
The options are running mode, decimal point setting, color setting, link option, button size, sound and converter mode.

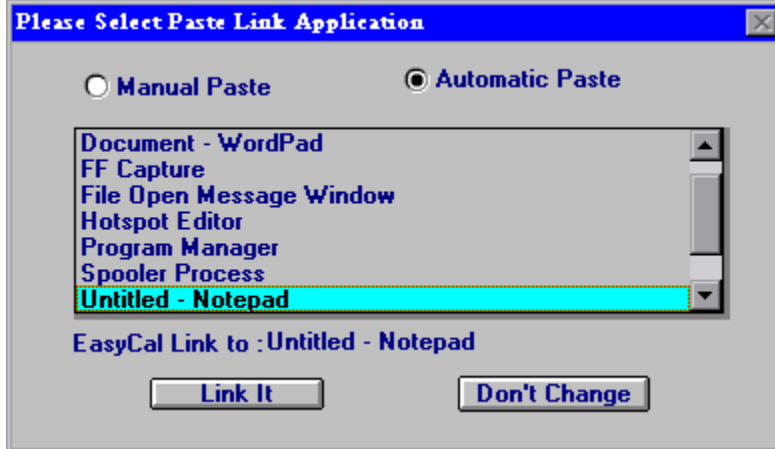
Four sets of metric conversion is available in EasyCal™.
Area, Capacity, Length, Weight

You can select the conversion units from this list, these conversion units are available based on the Metric Button you selected.

This is the Metric Result Panel, showing you the result after conversion from currently selected Metric Unit.

Click this button to perform Conversion, EasyCal™ calculate the value using the figure in Result Panel with the selected Metric Unit and display it in Metric Result Panel.

Click to the location that you want to know more information about it.



Select the paste mode that EasyCal™ should use.

[Automatic] - EasyCal™ will send the calculation result to the linked application automatically.

[Manual] - EasyCal™ will send the calculation result to clipboard.

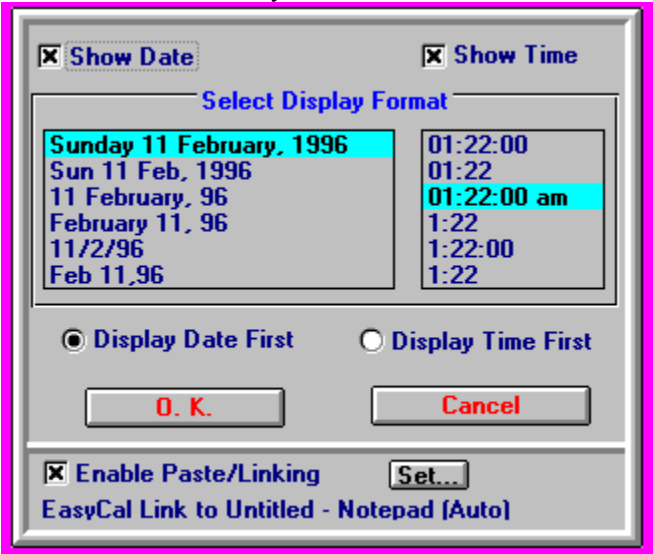
This task list window show you what applications are currently running. You can select any application by clicking on its name to linking it with EasyCal™.

This message tell you what application that EasyCal™ is linking currently.

Click this button to confirm linking option and return to EasyCal™.

Click this button to cancel any change you made and return to EasyCal™.

Click to the location that you want to know more information about it.



Check this box if you want EasyCal™ display currently date.

Check this box if you want EasyCal™ display currently time.

Click to the date format you want EasyCal™ to use to display the date.
EasyCal™ will send the date to the linked application as the date displayed on the floating bar.

Click on the time format you want EasyCal™ use it to display the time.
EasyCal™ will send the time to the linked application as the time display on the floating bar.

Click this option to tell EasyCal™ display date first.

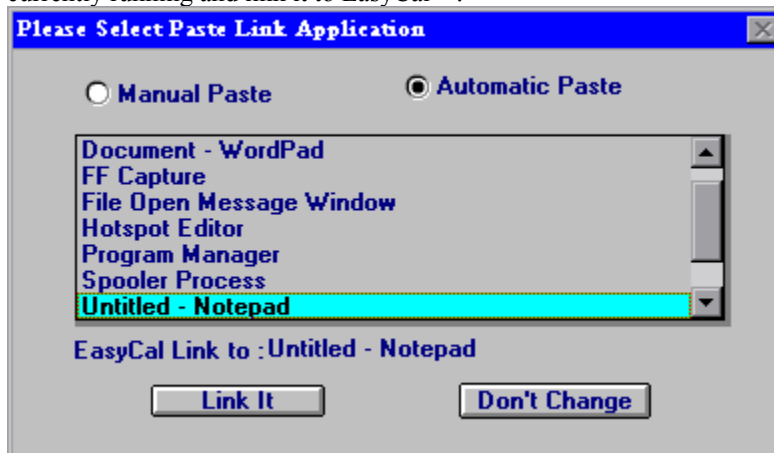
Click this option to tell EasyCal™ display time first.

Press this button when all the settings Satisfied.

Press this button if you want to undo any change.

Check this box to enable EasyCal™ to send the calculation result to the linked application or to the clipboard.

EasyCal™ will show up a Link Application window when you click this button, You can select an application that is currently running and link it to EasyCal™.



This line tells you what application is linking and the link mode.

(Auto) -- Automatically sent calculation result to Application that linked.

(Manual) -- Calculation result sent to clipboard.

Click to the location that you want to know more information about it.

The dialog box is titled "Set Button Text Color". It contains a color palette with 15 color swatches arranged in a 3x5 grid. The colors are: Row 1: Black, Blue, Green, Teal, Red; Row 2: Purple, Olive, Light Gray, Dark Gray, Blue; Row 3: Cyan, Red, Magenta, Yellow. Below the palette is a dropdown menu with "Memory Button" selected. At the bottom are two buttons: "Set To My Favourite Color" and "Undo Change".

Click any color box to get your desired color.

Select the button you want to set a new color to.

Click this button to confirm any changes and return to EasyCal™.

Click this button to undo any changes.

EasyCal™ Version 1.0

Click to the location that you want to know more information about it.

Colour Setting		About
Button Size <input type="radio"/> Large <input checked="" type="radio"/> Normal	<input checked="" type="checkbox"/> Run On Minimize <input checked="" type="checkbox"/> Button Click Sound <input type="checkbox"/> Metric Converter	Help
<input checked="" type="checkbox"/> Enable Paste/Linking <input type="button" value="Set"/>		Register
Decimal Point Setting <input type="radio"/> 0 <input type="radio"/> 1 <input checked="" type="radio"/> 2 <input type="radio"/> 3 <input type="radio"/> 4 <input type="radio"/> Floating		Exit EasyCal
		Return

Click this button to personalize the color of EasyCal™.

Select the button size of EasyCal™.

Large Button works fine at 1024x768 screen resolution.

Normal Button works fine at 800x600 screen resolution

640x480 screen resolution can only use normal Button only.

Select the option you want.

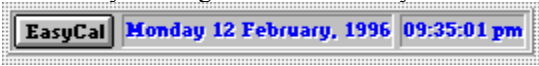
Run On Minimize - This option tell EasyCal™ to display in it's minimize mode when it launches every time.

Button Click sound - This option can help you make sure every keyboard or mouse input, EasyCal™ using Windows default sound to notify you.

Metric Converter - This option tells EasyCal™ enable and show metric conversion panel.

Check this box to enable EasyCal™ send calculation result to linked application or to clipboard.

EasyCal™ will show up a Link Application Windows when you click this button, You can select an application that is currently running and link it to EasyCal™.



Select you desired decimal point that EasyCal™ will display.

- About - Click this button will show the About box that tells you what version of EasyCal™ you are using, and the resources of your computer.
- Help - Click this button to display this Help file of EasyCal™.
- Register - Click this button will allow you input and print your information to register EasyCal™, Thank You.
- Exit - Click this button to exit EasyCal™, but why doing this, just minimize it. EasyCal™ does not blocking your desktop, it just like the tool bar button on your application.
- Return - Click this button when yare are satisfied every setting.

Click to the location that you want to know more information about it.

Remember to send us your favourite photo, we will put it in Screen Saver and mail it back to you.

Register

Ricky Lau Siu Fai
P.O.Box 26093
5501 - 204 Street
Langley, B.C.
V3A 8J2

Registration Form

Please fill out this form and mail it to us at the address shown above with the register fee(money order drawn at Canada Bank) to RICKY LAU SIU FAI.

Suggestion & Comment welcome
Any suggestion and Bug report please feel free to email to us, because we want to development the software you want us to do it.
To email us :
CompuServe : 102123,2571
Internet : RasTracer@Msn.com

Disk Version: We will send you a register serial no with the most update version of the program with 3.5" diskette.

Register Version: We will send you a register serial no without diskette.

Site License : We will send you a register serial no with the most update version of the program with 3.5" diskette. And you are giving a discount base on the quantities you want to register.

Workgroup Version 2 - 10 users

1 Copy(s) of EasyCal™ x \$15.00 = \$15.00

USA Shipping & Handling : \$5.00

Total Amount = \$20.00

Enter Your Information **Not Yet! Sorry**

Select the version you wanted.

Register Version - register the version you currently tested, using a registration code with the user name you supply to us.

This version needs to add \$3.00CAD for screen savers disk and shipping and handling.

Diskette Version - you will get a most update version of EasyCal™ that registered with the user name you supply to us.

Screen Saver is free and will be included in diskette.

Site license Version - its a discount base version depends on the quantities you want to register. Only one diskette will send to user and with site license agreement that allow user to install the number of copy as the user registered.

Enter number. of copies you want to register.

The tax is applies to Canada Residents Only.

Select your country.

Click this button to enter your information.

Click this button to cancel this action. Why??? Dont you think EasyCal™ is useful and convenient? If not, please send us some comments about EasyCal™. Thank you!

Click to the location that you want to know more information about it.

Please Enter Your Information

User Information

User Name :

Company Name :

Address :

City : State :

Country : Postal Code :

Email Address:

Where did you get EasyCal V.1.0?

Comments:

Print it NOW **Oh! Let me print it later**

Enter your name and address, we will register EasyCal™ using the name you supplied to us, and mail you back with this address.

Site License user should supply the Company Name to us, because we use Company Name as the Register Name.

Please tell us how you got EasyCal™, from friends, BBS or On-Line Service.

Any Comments are welcome or tell us any function you think EasyCal™ should include, we will put it into our consideration listing.

Click this button to print your registration form, after you send your registration form, we will process your order as soon as possible . Normally 2-3 weeks.

Click this button to cancel this action. Why??? Dont you think EasyCal™ is useful and convenient? If not, please send us some comments about EasyCal™. Thank you!

Click to the location that you want to know more information about it.

EasyCal Registration

User Name :

Company Name :

Serial Number :

Enter the name you supply to us as register user name in registration form. You will find it in our registration code card. Please type it exactly the same as in registration code card.

Enter you Company Name here.

After you send us the registration form, you will receive a card with our registration serial number. Type the number here exactly show on the card.

Click here to perform register action, if every information you type is correct, EasyCal™ will register you as the register user.

[Click here to cancel the action.](#)

[License Agreement](#)

EasyCal™ Version 1.0 is a copyrighted SOFTWARE PRODUCT protected by copyright laws with British Columbia, Canada and international copyright laws.

This SOFTWARE PRODUCT is only licensed to users, not sold.

LIMITED LICENSE

EasyCal™ is a shareware program, you gain a limited license to evaluation EasyCal™ Version 1.0 within 21 days of TRIAL Period. In this period, you can freely use EasyCal™ Version 1,0 as for your daily usage.

After this Trial Period, if you find this Program useful, and find that you continue to use this SOFTWARE, you must REGISTER this SOFTWARE as licensed user by sending us Registration Form with Registration Fee. The registration fee will license one copy for one use on any one computer at any one time.

Commercial users of the Program must register and pay for their copies of the Program within 21 days of first use or their license is withdrawn. Site-License is available, to get more information, please look at [Register EasyCal™](#).

You are encouraged to pass a copy of the Program along to your friends for evaluation. Please encourage them to register their copy, if they find that they can use it. All registered users will receive a copy of the latest version of the Program.

Anyone distributing the Program for any kind of remuneration must first contact the author at the address provided for authorization so that you can be kept up-to-date with latest version of the Program.

Why Should I Register?

By Register, you will get a screen saver totally personalize for you using your favourite photo. And it is totally free of charge for Disk Version and Site license User. Register Version only charge for shipping and handling.

By Register, you are entitle to get 10% dicount off from any other Program written by the author when you register.

By Register, you are entitle to get speail discount or to pay a small amout to upgrade to latest version of the Program you registered.

By Register, you get technical support through mail.

Send question to :
G.P.O. Box 26093
5501 - 204 Street,
Langley, B.C.
V3A 8J2 CANADA

or FAX 1-(604)534-2981

For faster respond send your question by email to
rastracer@msn.com (Internet)
102123,2571 (Compuserve).
RASTRACER (America Online)

