

What is Borders?

Borders is a deceptively simple to use program that provides the user access to thousands of programs and files through icons and descriptive titles at anytime using a mouse or pointing device. Borders allows users to quickly switch between full-screen applications or child windows with a single click of the mouse. Best of all, Borders does not occupy any "usable" display space. In fact, users unfamiliar with Borders will not even know that it is there. The registered version of Borders also includes a number of special utilities to quickly locate and launch files and to allow users to sample, load and unload fonts on the fly.

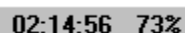
The Borders Resource Monitor

When you first run Borders, a small resource monitor similar to the one displayed below appears in the top left corner of your screen. Drag the monitor to a location where it will not get in the way of your day-to-day activities. (Bottom right corner).

Note: If your screen suddenly goes blank or your screen blanker suddenly activates, do not panic. Borders is programmed so that a single click on the monitor triggers your screen blanker. Simply move your mouse and your screen will be restored. The screen blanking feature is not activated, however, if the resource monitor is moved to a new position during the interval that the left mouse button is depressed and released. Therefore, anytime you want to quickly blank your screen (i.e. to hide work in progress from roaming eyes) simply click on the Borders Resource Monitor -- of course none of this will work if you have not selected a screen blanking option for your desktop via Window's Control Panel. (If you decide to use this option, you may want to reset the screen blanking option for a longer time interval. Rather than having it kick in at 10 or 20 minute intervals, set it for 99 minutes and anytime you need to leave your desk, simply click on the Resource Monitor to initiate the screen blanker.)



78% 19146Kb



02:14:56 73%

***The Borders Resource Monitor
Displays available system resources
and memory or time and memory. When
resources drop below 35% the Monitor's
display turns red as a warning.***

Right-clicking on the monitor brings up the following menu options:

- About Borders : Displays the 'About Borders Dialog Box.'
- Use as Shell : Installs Borders as the Windows "Shell" program.
- Exit Borders : Exits the Borders Program.

- Exit Windows : Exits Windows.

- Restart Windows : Exits and restarts Windows.
- Reboot System : Reboots Computer.

- Auto Adjust : Prevents the user from accidentally dragging a window off of the screen to a point that it can no longer be dragged back on screen (Default).
- Auto Align : Prevents 'Maximized' programs from spilling off of the screen (Default).
- Display Time : Displays the current time and system resources.
- Display Resources : Displays available system resources and memory (Default).
- Set Alarm : Displays the 'Set Alarm Clock' dialog box (24-hour clock).

- Compact Memory : Compacts fragmented memory blocks (may take up to 30 seconds if memory is badly fragmented).

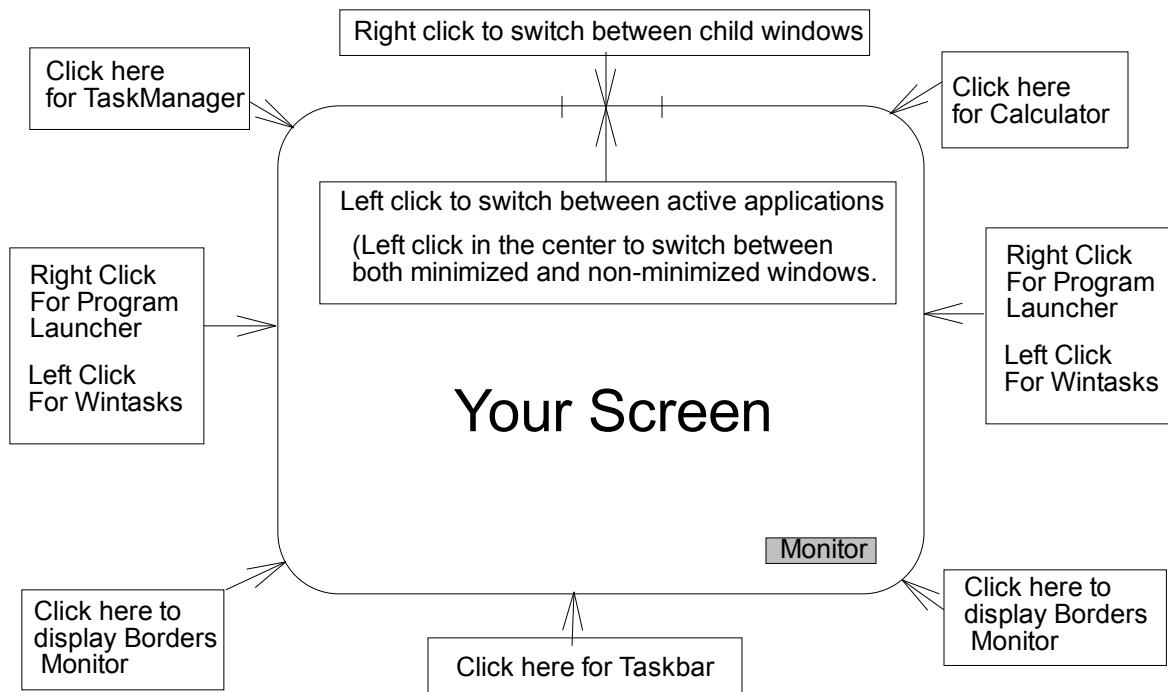
- Always on Top : Places the monitor above all applications. (Identical to 'Make TopMost')
- Normal : Monitor may be hidden behind other applications (Default).
- Hide Monitor : Does not display the monitor and makes Borders completely invisible to the user.

NOTE: If you feel that Borders is interfering with the processes of a program try disabling the "Auto Adjust" and "Auto Align" features. Ordinarily, however, these features should not interfere with any of your programs.

The Exit and Reboot options will notify the user if an application has an edited, unsaved file and provide the user with the option of saving any of these files before exiting Windows.

So where are all those great features mentioned above?

As the name implies, Borders sits on the borders of your screen. Borders occupies the first or last row or column of pixels on the top, bottom and sides of your screen. It is the same color as the background of your screen and therefore invisible. Since it only occupies a single row or column of pixels, considerably less than the width of the borders surrounding your application, it, in effect, uses the unused ("unusable" space of your screen).



Borders sits on the edges of you screen and awaits your command.

What happens when you click on a border?

1) The Windows Calculator:

Drag your mouse to the top right corner of your screen. Don't aim, just drag it as far as it will go and click. The Windows Calculator should pop up. Clicking in this corner at any time, whether you are working full screen or not, will call up the calculator to help you with those quick calculations and checks.

2) The Task Manager:

Drag your mouse to the top left corner and click. The Task Manager will appear. As with the calculator, you may access the Task Manager in this manner when working full screen. NOTE: The Registered Version of Borders also includes a task manager replacement which offers a number of useful features not found in in task manager program that comes with Windows. (To use the Task Manager that comes with Borders, change the "taskman.exe = taskman.exe" line in the "[boot]" section of your "system.ini" file to read:

`"taskman.exe=c:\Windows\Borders\taskman.exe"`

Where "c:\Windows\Borders\" represents your Borders directory.

3) Switching between applications.

Drag the mouse as far as it will go to the top of the screen and "left-button" click. If you have more than one application running, Borders will switch you between the applications on your screen. Clicking in the center of the top border will switch you between all applications, including minimized (iconic) applications. Clicking slightly to the left or right of the center allows you to switch between normal and maximized applications only, ignoring any minimized application.

4) Switching between child windows.

Open the program manager and maximize one of its groups so that it occupies the entire client area of the program manager. Now "right" click on the top border and Borders will switch you between each of the groups (child windows) in your program manager, quickly and painlessly. This feature will work with the file manager and most Multiple Document Interface applications such as Word for Windows, Excel, Compuserve, etc. An extremely handy feature when you need to work full screen between child windows for copying blocks of text, referencing, etc. Note that this feature also turns the Program Manager into a quick switch launch pad. You could actually resize the Program Manager so that it is no larger than necessary to display all or the icons in your largest group. But don't bother because the "Borders Program Launcher" offers a better way -- more of that later.

The Borders TaskBar



Drag the mouse to the bottom of your screen (not the corners) and click. The Borders Optional TaskBar will appear. When the Taskbar is visible, the Borders Monitor disappears. Right click on the TaskBar to display the following options.

Align Borders : Aligns the top or bottom border of any Maximized application with the top or bottom border of the TaskBar.

Always Visible : Does not exit when the TaskBar is no longer the active application on the desktop.

Exit on Deactivation : Exits when it is no longer the active application. Same as the Windows task manager.

Display at Top of Screen : Displays the TaskBar at the top of the screen.

Display at Bottom (Default): Displays the TaskBar at the bottom of the screen.

Display at Startup : Displays the TaskBar whenever Borders is launched.

Exit Windows : Exit Windows.

- Restart Windows : Exit and Restart Windows
Reboot System : Exit Windows and reboot the computer.
- Close : Exits TaskBar. Note that the TaskBar is a separate program from Borders and runs independently in order to conserve system resources when not being utilized.

Other features of the TaskBar

- 1) Click on the display at the far left of the TaskBar to change the display color.
- 2) Click between the two labels to change the display.
- 3) Click on the arrow keys to see what applications or windows are currently visible. Double click on the program title to switch to that application.
- 4) The first button to the right of the arrow keys makes the selected program a "top most" or "always on top application." The button next to that removes the "top most" attribute from the selected application. Useful for small utilities like monitors or calculators that must always be visible.

5 - 16) The next few buttons do the following:

- "End Task": terminates the selected application.
- "Minimize": minimizes the selected application.
- "Arrange Icons": arranges the desktop icons.
- "Cascade": cascades the active windows.
- "Tile Vertically": tiles the active windows vertically.
- "Tile Horizontally": tiles the active windows horizontally.
- "Font Manager": launches the Borders Font Manager Program (registered copy only)
- "File Runner": launches the Borders FileRunner program (registered copy only)
- "Character Map": launches the Windows Character Map program.
- "File Manager": launches the File Manager.
- "Control Panel": launches the Windows Control Panel application.
- "Program Manager": Launches the Windows Program Manager.

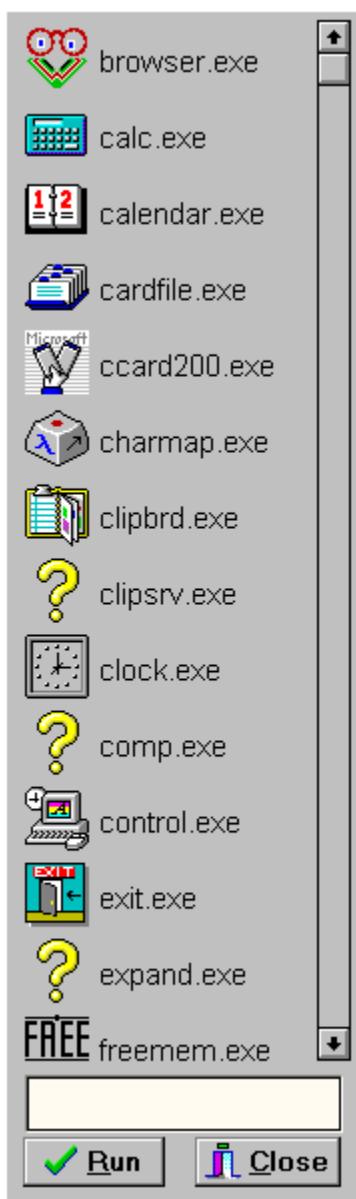
Right click on the Taskbar to display the menu then close the TaskBar and click on the bottom left or right corner to redisplay the Borders Monitor.

(NOTE: If you prefer not to use the Taskbar, you may manually edit the "Borders.ini" file under the section [Wintasks]. Look for the "Taskbar=" line and change the value to "None" or any other program you would prefer to launch. One suggestion would be something like Lotus Notes if you are on a network.)

What happens if I click the right and left borders of my screen?

Left-button click on the either the left of right edge of your screen to launch the Borders Wintasker.

The Wintasker is a simple program the simple displays all of the applications in your Windows directory for quick launching. Double click on any of the icons to launch the respective programs. Or Click once on an item and add any parameters in the edit box at the bottom of the form then press "enter" or click on the run button.

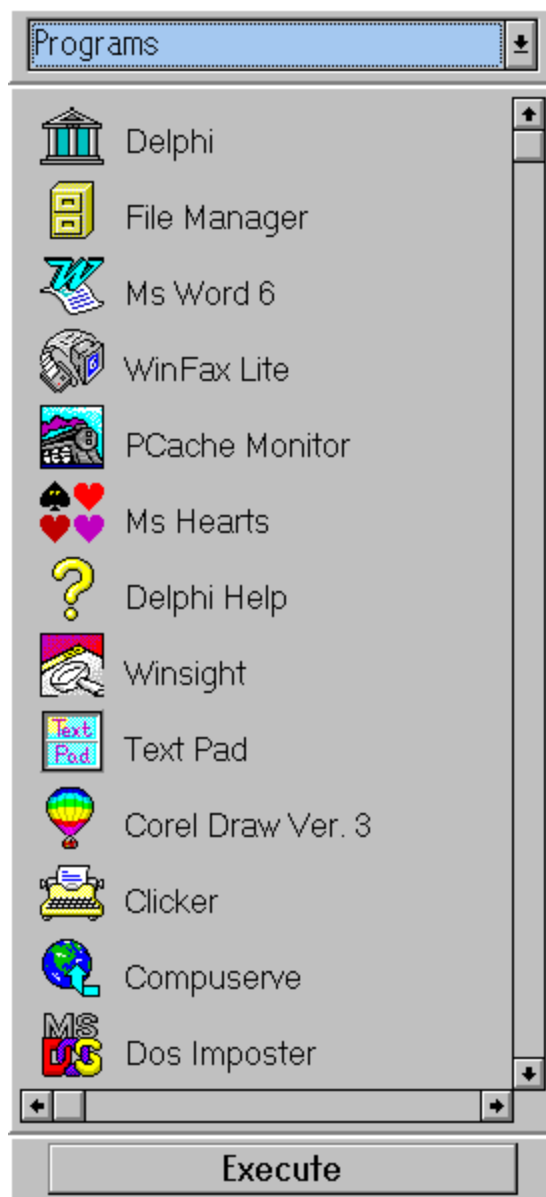


(NOTE: If you prefer not to use Wintask, you may manually edit the "Borders.ini" file under the section [Wintasks]. Look for the "Wintask=" line and change the value to "None" or any

other program you would prefer to launch. Both the Taskbar and Wintask were designed as 'filler' options as their functions can be effectively carried out by the Borders Program Launcher and Taskmanager.)

Right-button click on either the left or right borders of your screen to display the Borders Program Launcher.

The Borders Program Launcher is the heart and soul of the Borders Program and offers an alternative to the program manager in managing and launching applications. Unlike the display below, however, when you first activate the Program Launcher, the Launcher will not contain any entries. To add, edit, delete files and groups, right click on the Launcher to display the popup menu and select the appropriate menu item. Once you have created appropriate groups and added files to the Launcher, the Launcher will always be available at a single Right-click of the mouse.



Borders Program Launcher Menu Items

Display messages

By default, the display messages option is checked. Whenever the user selects a "Setup" option from the menu a message box with a brief set of instructions is displayed. Click on this option to disable the message boxes.

Adjust Width

The default width of the Program Launcher is 275 pixels, Borders will accept any value between 100 to 600.

Display Icons

Normally the program launcher displays an icon along with the program title for quick identification. If you prefer, however, you may opt to disable this option by selecting one of the following options.

No Icons

Borders will display and switch between groups quicker if this option is selected as it does not have to spend time drawing each icon in the list of applications.

Sort Entries (No Icons)

Allows users to temporarily sort the listed files for quick referencing. Normally files should be arranged by priority, with the more popular files at the top of the list.

Double Click Launch

Select this option if you prefer to launch files with a double click.

Single Click Launch

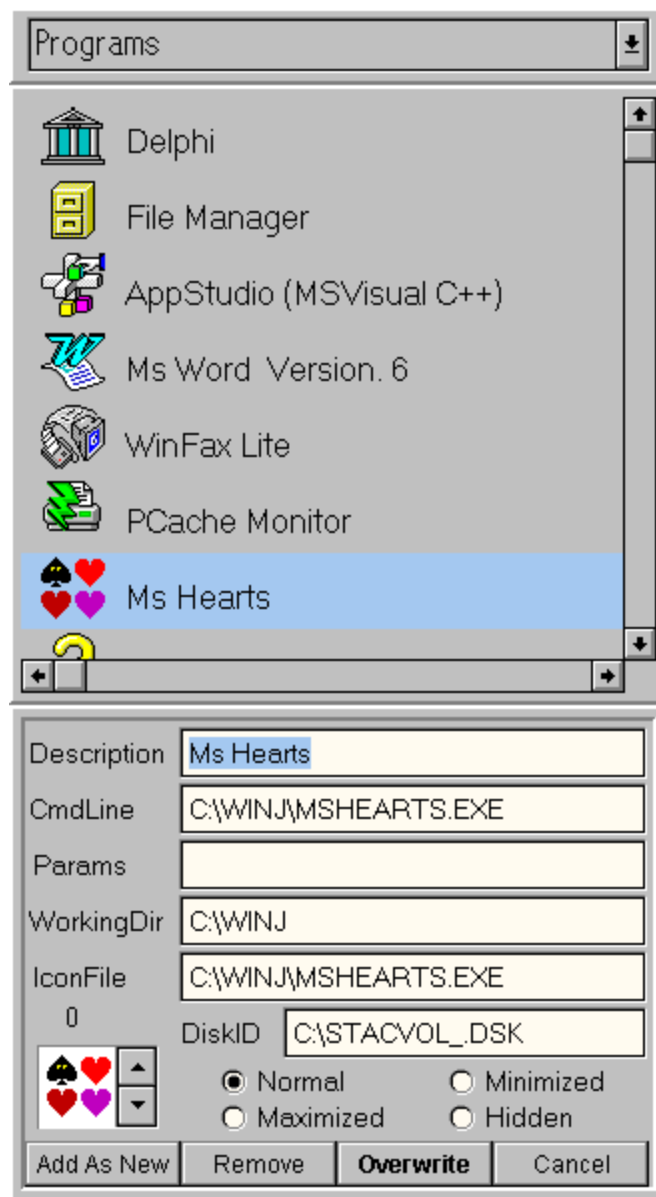
Select this option if you prefer to launch files with a single click.

Setup (Add/Arrange Files)

Select this option to add files to the program launcher. Selecting this option automatically launches the File Manager. Select the appropriate group from the Program Launcher (or create your own using the "Setup (Add/Edit Groups)" option below) and Drag and drop files from the File Manager onto the Launcher. Then drag and drop the files on the Launcher itself to rearrange the order in which the files will ultimately appear. Files should be arranged by popularity, with the more commonly used files at the top of the list. Finally, select the "Setup (Edit/Delete Files)" option to edit titles and other display/launch options.

Setup (Edit/Delete Files)

Selecting this options displays the different launch options for each file or program on the Launcher. Click on one of the entries you have added to launcher to display its information in the box at the bottom of the Launcher. Edit any field you wish to change. Titles may be up to 200 characters, though it is highly advisable that they be limited, whenever possible, to under forty characters. Note that while Borders will accept files that are not on your hard disk, it will not accept any "Iconfile" entries that are not on your hard disk. This is necessary in order to prevent any read errors from occurring whenever you activate the Launcher. By default, Borders uses the icons of the application itself or the icons of the Program Manager when no icon is available. You may change this default setting by editing the "[DefaultIconFile]" settings in the "Borders.ini" file. A good alternative file to the "Progman.exe" file for icons is the "Moricons.dll" located in either your "Windows" or "Windows/System" directory.



To edit an entry. Select the entry from the Icon list and all of its parameters will be displayed in the editing box at the bottom of the panel. Press the "tab" key or use your mouse to move to the parameter you wish to change. After you have entered all the changes necessary, press the "Enter" key or click on the "Overwrite" button to save your changes. Use the arrow keys to select another entry and press "Tab" to jump to the editing box.

If you have included files from floppies or other remote sources, make sure that you include an appropriate entry in the "DiskID" field. Whenever you try to launch a file or program that is not on a harddisk, Borders will remind you that the file is not on the harddisk but rather on the disk described in the "DiskID" field. It will ask you to confirm that the disk is in the appropriate drive before continuing. This option allows you to maintain a list and keep track of important back up files or seldom used files that are on diskettes.

Add parameters if necessary. Set the working directory to the directory in which you wish to have your application search for files. If the entry you are editing is a working file then the working directory should be the same as the directory of the file itself. Click on the arrow keys to select an appropriate icon. Some applications may have more than one icon. Select how you wish to have the program launched, "Normal," "Minimized," "Maximized," or "Hidden."

Finally, click on the "Overwrite" button or press enter to save your changes.

HINT! If you need to add a single workfile to the list, simply click on a file that shares the same application and directory. Then change the commandline and description fields to match the new entry and select the "Add As New" option.

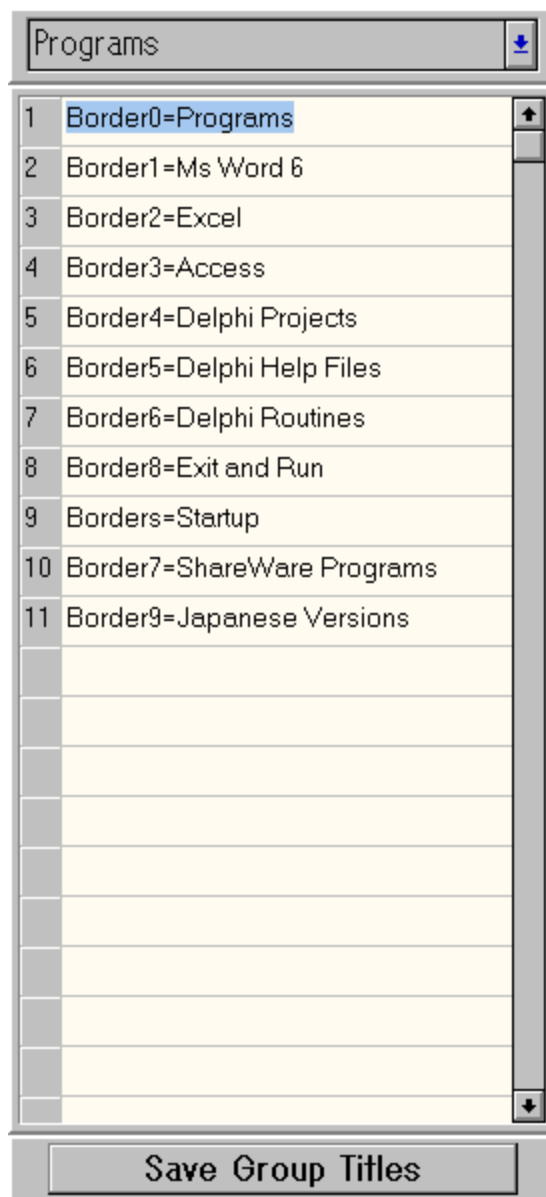
To delete an entry, select the entry then click on the "Remove Item" button.

Normally, each group can handle up to 120 files. This number varies depending on the length of the file descriptions.

Setup (Add/Edit Groups)

Select this option to add, edit or delete groups from the group list. Normally, Borders should be able to handle up to 75 groups. Note that Borders requires a unique inifile name for each group, with the exception of the "Startup" group that uses the default "Borders.ini" file. (This is the reason for having Borders installed in a directory or subdirectory by itself. Each of these inifiles will be created and stored in the same directory as Borders itself. Select names that are easy to keep track of such as "Border1.ini, Border2.ini, etc.")

To arrange the order of groups, drag on the item number of the group entry. Groups should also be arranged by priority. When you first activate the launcher, you may move between groups using the up and down arrow keys. Thus, having the groups listed in priority allows you to quickly access the group you want.



There are a two reserved group names that the user should be aware of.

1) **"Startup"**

Inifile name must be the default "Borders.ini" file.

The line should read: "Borders=Startup"

Like the Program Manager, The "Startup" group includes all applications that the user would like to run when Windows is initiated. Note that the applications in this group will not be run if Borders is not the shell application for windows. Similarly, when Borders is used as the shell application, Borders will also run the programs on the "run=" and "load=" lines in the [windows] section of your "Win.ini" file.

2) **"Exit and Run"**

The "Exit and Run" group is special group for those DOS applications that simply will not run properly under Windows. Selecting an application in this group causes Windows to

exit and run the application. When the application is finally terminated Windows will automatically restart.

"Run"

The "Run" option is the default setting for the Launcher. The Launcher must be set to this option in order to launch any of the files it contains.

Click anywhere on the Group dropdown list to display your group options. (Don't bother aiming for the down arrow it is quicker and easier to click on the display area.) Select a group and the group's list of applications will automatically be displayed on the launcher.

Close Launcher

Closes the Launcher.

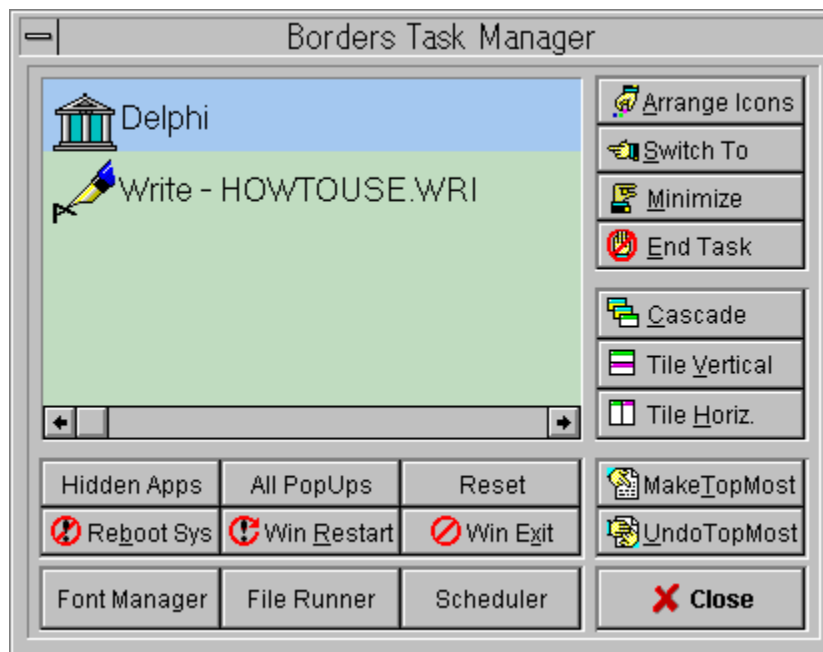
!!!

Another advantage of using the Launcher is that most MDI applications will allow you to open multiple files using the Launcher. For example, add a number of Word for Window files or Word Perfect or Works or whatever word processing program you are using to a Launcher group entitled "Word" . (First create the group, if necessary). Now launch the first file by clicking on it. The launcher will disappear and your word processing application should activate displaying the file you selected. Next, right-click on the left or right border to call up the Launcher again. **The Launcher will still be set to the word processing group!** Select another file and your word processor should display the subsequent file. Now you have two windows open in your word processor without having to go through the "File," "Open," "Select Directory," steps. Now, right click on the top border of your screen to switch between child windows!

Don't forget if you need to do some quick calculations, click in the top right corner of your screen to call up the calculator.

HINT: Create a few dummy files using your most frequently used templates or forms, use the File Manager to set their attributes to "read only" and add them to the Launcher. Whenever you need these forms simply select them from the Launcher. When you try to save them your word processor will inform you that the file is "read only" and must be saved under a new name. (Great for interoffice memo forms, fax forms, etc.)

The Borders Task Manager



The Borders Task Manager has a few additional features not found on the Borders TaskBar. The "Hidden Apps" button displays the names of all hidden applications that are running in the background. This is useful in confirming that certain applications that run hidden are indeed running, such as Stacker's AutoSave.

The "All PopUps" option displays all visible popup windows regardless of whether or not they are parent applications. Useful in switching between popup windows of applications such as Delphi.

The "Reset" option simply resets the display to the default Task Manager settings.

The "Font Manager" button activates and displays Borders Font Manager.

The "FileRunner" button activates and displays Borders FileRunner.

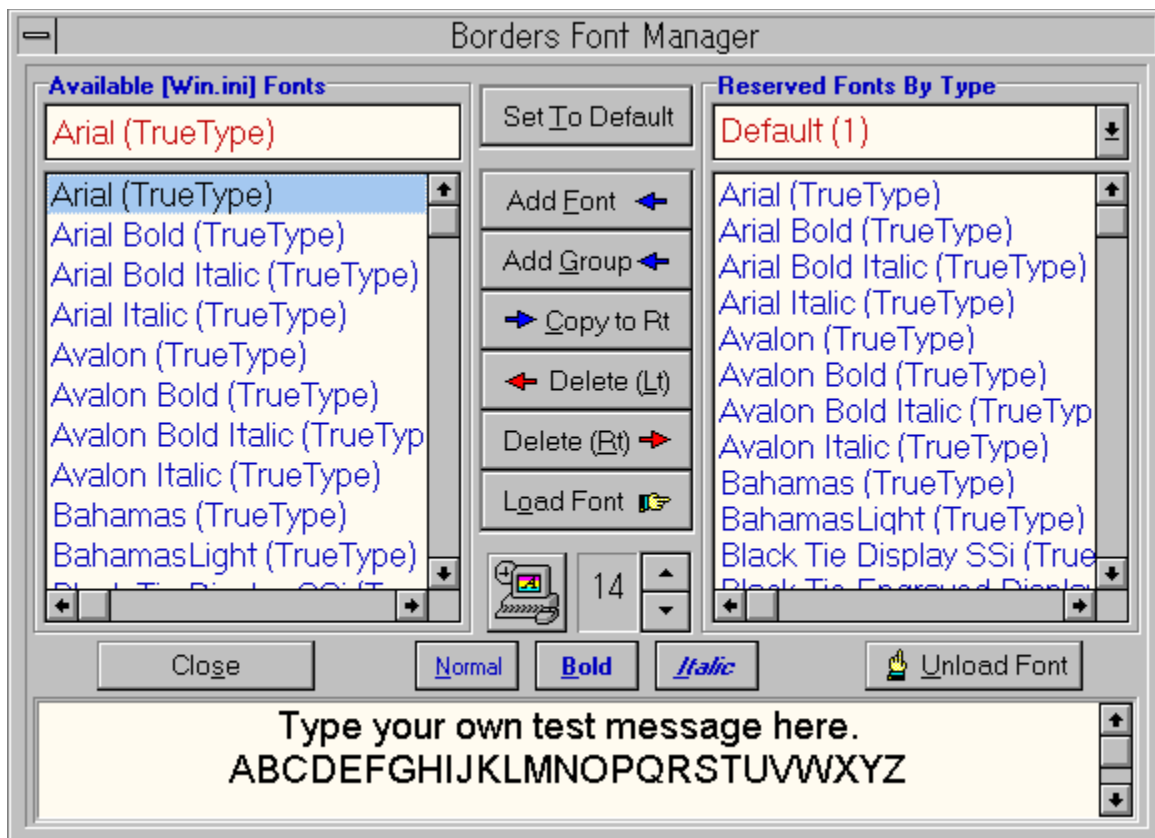
The "Scheduler" button activates and displays the Windows Calendar in 3.1 or the Scheduler program in 3.11. This option can be changed by editing the 'scheduler' line in the [Scheduler] section of the "Borders.ini" file so that the button will launch whatever scheduling program you are currently using (i.e. Lotus Organizer).

Hint: To replace the Windows Taskmanager with the Borders version, edit the "Taskman=taskman.exe" line in the [boot] section of your "System.ini" file to read: "Taskman=C:\Windows\Borders\Taskman.exe" -- where "C:\Windows\Borders\" represents the path to the Borders directory. If you have little or no need for the Windows Taskmanager, consider replacing it with the Borders FileRunner, instead.

The Borders Font Manager

The Borders Font Manager acts as a supplement to the Control Panel's Font Options. The Font Manager allows you to add or remove fonts as necessary to meet your special needs.

Why a font manager? Fonts eat up memory and resources. So why load fonts that you normally don't use each time you start up Windows?



When you first launch the Font Manager, the Font Manager will create two Default groups in its "TaskFont.ini" file, "Default (1)" and "Default (2)" respectively. The fonts in these two groups are identical to the current list of fonts in your Win.ini file. Customize these two groups to create two quick default settings that you can always revert to and initialize whenever you necessary. (Note, clicking on the 'Set to Default' button when the "Available Fonts" group selector is displaying any other group besides "Default (1)" or "(2)" will automatically reset your Windows fonts to those of "Default (1)." To reset the available fonts to those of "Default (2)," the group selector must be set to "Default (2).") When the "Set to Default" button is selected, the entire contents of the "fonts" section in your "Win.ini" is replaced by the fonts in the selected "Default" group. Fonts that are not included in the "Default" group are removed from memory and their associated resources freed.

To setup and use the Font Manager:

- 1) First add as many fonts to Windows using the Control Panel's Font option. (You may launch the control panel by clicking on the Control Panel button on the Font Manager.)

2) Call up the Font Manager and copy each font from the "Available Fonts Group" to an appropriate group in the "Reserved Fonts by Type" section (ie: Sans serif, Script, Decorative). Each time you select a font from the "Available" list, a sample of the font is displayed in the text at the bottom of the Font Manager. Type in your own text if you need to see what the font will look like for your specific needs.

3) Next delete any unnecessary font from the "Available Fonts" list. (The "Available Fonts" list is the list of fonts in your Win.ini file.) As a rule of thumb, one should not delete standard Windows fonts such as "Arial," "Courier," as deleting these may affect your display.

4) Add more fonts to Windows and repeat the above steps until you have gone through all the fonts on your hard disk or approximately 500 fonts, whichever comes first.

5) Now, whenever you need a special font or fonts simply copy the font from the "Reserved" list to the "Available" list or use the "Load Font" button to simply load the font for the current Windows session.

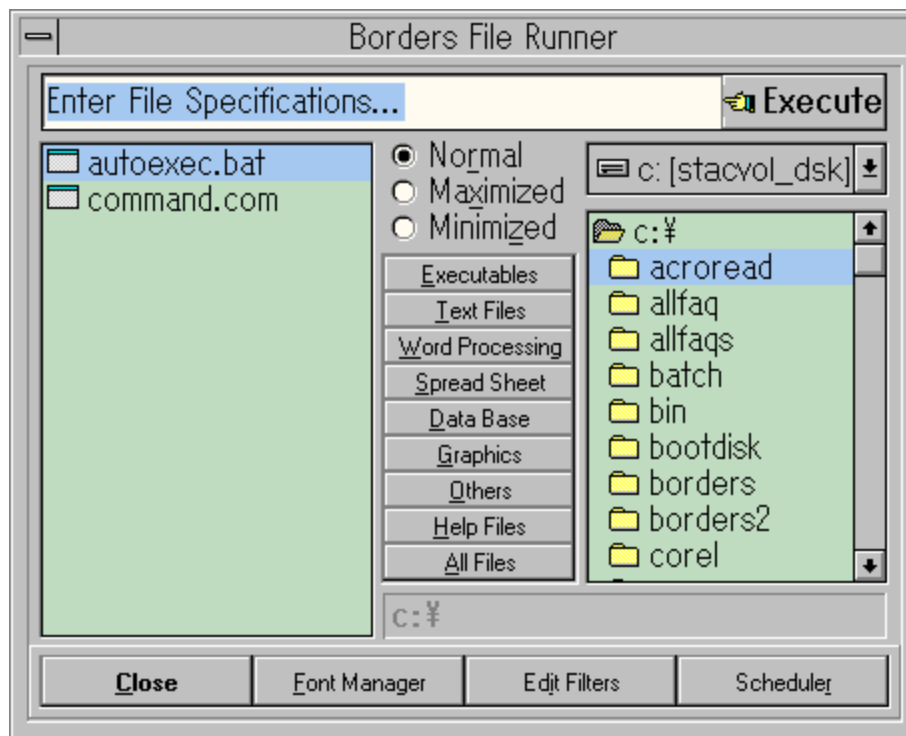
6) If you forget what a font from the "Reserved List" looks like, select the font and click on the "Load Font" button. The "Load Font" button activates the font for the current Windows session and displays the font in the sample text at the bottom of the Font Manager.

If the font is not what you desire, immediately click on the "Unload Font" button to remove the font from memory and to free its resources. If you select another font prior to clicking on the "Unload Font" option, simply return to the selection and press the "Unload Font" button.

If the font is what you desire you now have the option of adding it to your Win.ini file or of using it just for the current Windows session. If the project you are working on is a large one that will require several Windows sessions, the font should be added to the "Available Fonts" list.

7) The "Special" groups are for special font selections that you would like to add as a group to the existing "Available Fonts" list. Use the "Add Group" button to activate these groups.

Borders File Runner



Borders File Runner provides a quick alternative for searching for and launching files.

The File Runner comes with 9 default filter settings. To select a filter, simply select the button that represents the type of file you are looking for. These settings may be customized to meet your specific application needs by clicking on the "Edit Filter" button. If you need to change the caption of a button be careful when selecting an accelerator key option (ie "O" in "Others"). The accelerator key must be preceded by an ampersand(&) and must be a unique letter. These include the letters "C, F, I," and "R," which are the accelerator keys for the button options at the bottom of the File Runner.

DO NOT USE spaces in the filter descriptions.

Arrange the order in which these buttons appear by dragging the button identifying number up or down on the list.

Hint: If you generally have your work files in different directories, you may wish to combine certain type of files under a single filter button to allow for more options. Since you only have one or a few file type in each directory only these files will show up, anyway. For example you might combine spreadsheet and database files under one filter. (If you have little or no need for the Windows Taskmanager, you may want to consider rewriting the "Taskman=" line in the [boot] section of your "system.ini" file so that a double click on your desktop launches the Borders FileRunner, instead. The Borders Taskmanager will still be available by clicking in the top right corner of your screen.

Customizing Borders

You may change several of the programs that Borders launches when clicked. These are the:

- TaskManager
- TaskBar
- Wintasks
- Scheduler

To change The Borders TaskManager, TaskBar, and Wintasks options, edit the [Wintasks] section in the "Borders.ini" file located in your Borders directory.

--- Default Settings ---

```
[Wintasks]
Wintasks.exe=C:\Windows\Borders\Wintasks.exe
Taskbar.exe=C:\Windows\Borders\Taskbar.exe
Taskman.exe=C:\Windows\Borders\Taskman.exe
```

Replace the appropriate line or lines above with the path and program of your choice or enter "None" if you do not wish to have any program launched.

Similarly edit the "Scheduler=" line in the [Scheduler] section of your Borders.ini file to change what program the Borders TaskManager or TaskBar will launch.

For dedicated systems (i.e. point of sales systems) Borders may be used as a customizable menu program.