

TrueDic dictionary for *English* and *German*

This **English-German** dictionary for **WinWord** makes it easy for you to look up translations directly from WinWord and insert them in a document. You will find it an *ideal supplement* to your existing thesauri, spellers and grammar checkers.

Topics:

Inserting, deleting and modifying dictionary entries

Moving the WinWord insertion point

The functions of the keyword field

Progressive search

*Looking up an entered keyword in the thesaurus

*Looking up spelling

Searching with wildcards e.g. sup, t?ll

The functions of the word list

Specifying colors

*Searching for synonyms and antonyms

Translating/copying/inserting words

Searching for a compound expression from the document

Studying

*Inserting words in the study list

*Creating a Word document from the study list

*Creating a study list

Keyboard layout

*Configuring the dictionary

Abbreviations - Abkürzungen

* = new functions

Creating/displaying a study list

Displaying a list of translations

Any translations that you carry out using the <**Translate**> button are placed in a text file. If you press <**shift**> while clicking on the <**Translate**> button the selected texts will be written to this text file without affecting the Word document. If you would like to have this data in the form of a WinWord table, choose the menu item Translation list from the system menu. This creates a new WinWord document in which your effected translations are laid out as a table.

For example:

Keyword	Translation	Language	Created on
ablaze	erstrahlen	E	02/20/95
cabaret	Varietédarbietungen pl	E	02/20/95
ersetzen	replace	G	02/20/95
work in	einbauen	E	02/20/95

Creating a list of translations

You can specify the name of the text file in which the list of translated expressions should be placed. Select the menu item Options in the system menu.

Looking up a compound expression from the document



While the dictionary is open you can return to your Word document to select a portion of text, which you can then copy to the keyword input field by clicking on the <Look up> button.

This feature is intended to supplement the arrow buttons, so that you can also look up compound expressions (such as **get off**) without having to close and reopen the dictionary.

Function keys

When the insertion point (focus) is in the word list

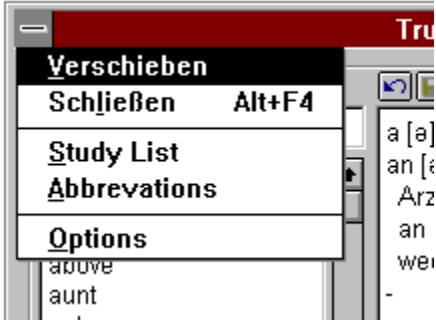
<f4> Call the thesaurus with the current selection from the keyword list

When the insertion point (focus) is in the keyword input field:

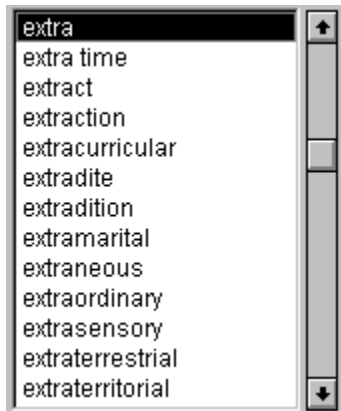
<f4> Call the thesaurus with the contents of the keyword input field

<f5> Look up spelling

<f6> Search for part of a word, e.g. sup*, t?ll



This is the **TrueDic** system menu



This is the **TrueDic** word list/keyword list



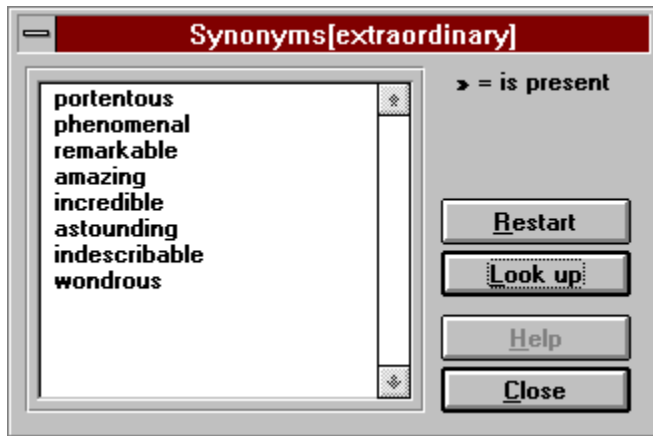
This is the **TrueDic** keyword input field

Suggestions, improvements

If you have any requests or suggestions, write to us so that we can extend the program to suit your requirements.

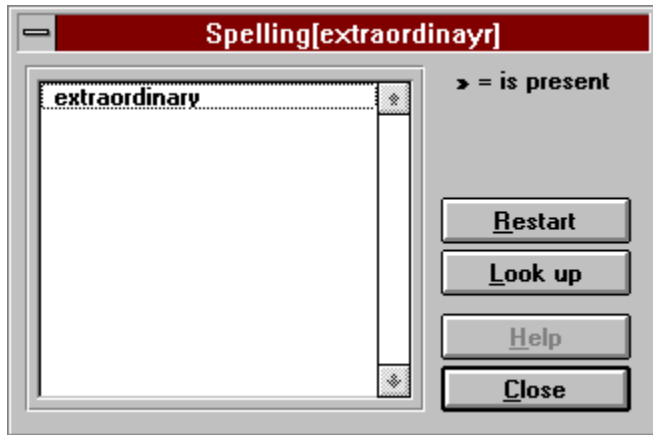
Looking up an entered keyword in the thesaurus

In the keyword input field enter the word for which you want to see synonyms or antonyms and then press **<F4>**. The located expressions are displayed in a dialog box, which also indicates which of them has an entry in the dictionary.



Checking spelling (entered keyword)

You have entered a word in the keyword input field for which there is no entry in the dictionary. Press **<F5>**. This shows you a list of suggested words with similar spelling.



Searching with wildcards (entered keyword)

* = represents an arbitrary number of arbitrary characters (as in *ranche*, inf*tion)

? = represents exactly one arbitrary character (as in b?tter)

Example:

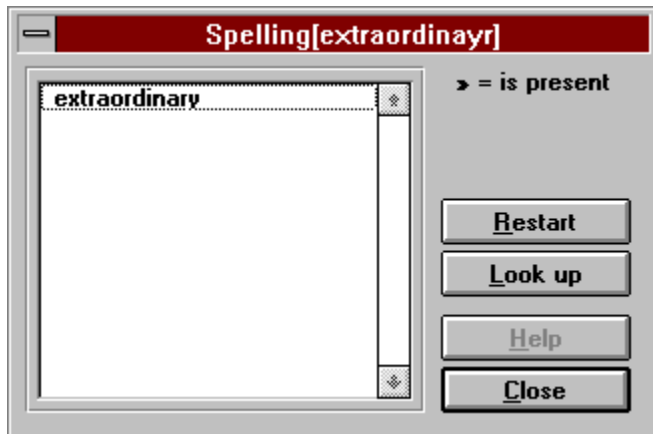
You would like to see a list of all the words which end with the letters **tually**:

In the keyword input field enter: ***tually**.

Press **<F6>**.

The program now searches for all the keywords which end with the letters **tually**.

The result of this search is displayed in a dialog box which also indicates which of the words has an entry in the dictionary.



Progressive search (entered keyword)

Enter the word you want to look up in the keyword input field. Each time you enter a character the keyword list is automatically repositioned.

The functions of the word list (colors, synonyms, deleting)

C olor N ew
C o lor C hanged
D el e te Entry I n s ert Entry
S ynonyms[W ord]

You call up this menu by clicking the right mouse button in the keyword list

Color new/changed entries:

You can use this menu item to specify the colors that should be used for new keywords and for modified entries.

Delete/insert entry:

You can use this menu item to delete an entry from the dictionary or to insert one.

Synonyms and antonyms:

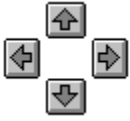
You can use this menu item or the function key <F4> to search WinWords thesaurus for synonyms of the currently selected keyword and to display such words (if any) in a dialog box which also indicates which of the synonyms has an entry the dictionary. WinWord can use a number of different English thesauri, so you should make sure you address the correct one by first specifying the desired language in the menu item Options. (e.g. **English (UK)** for the British thesaurus).

The corresponding entries:

Australian English	English (AUS)
British English	English (UK)
American English	English (US)

N.B.: The **English (US)** thesaurus will be used unless you specify otherwise,.

Moving the WinWord insertion point



You can use the arrow buttons to move the insertion point in the current WinWord document to the next word so that you can look up the meaning of that word.

Translating/copying/inserting words

Translate

The current selection in the WinWord document is replaced by the current selection in the dictionary. The dictionary remains open. The changes you make using this menu item are all preserved in a file in **Text Only format**. You can specify the name of this file and the directory in which it is (to be) located by means of the menu item Options in the system menu.

You can press <shift> while clicking on the <**T**ranslate> button to have the selected translation written to this translation file without affecting the current Word document. If you wish to examine the contents of the translation file, choose the menu item **T**ranslation list from the TrueDic system menu. The file is automatically inserted in a new Word document and converted to a table.

Copy

The current selection from the dictionary entry is copied to the clipboard. If no text is selected then the entire entry is copied.

Insert


The current WinWord selection is replaced by the text that is currently selected in the dictionary. If this includes any phonetic symbols you should remember to have WinWord format them as **Arial Phonetic**.

If no text is currently selected in the text window this function copies the current word in the keyword list.

Inserting, deleting and modifying dictionary entries

Modify:

You want to change one of the entries in the dictionary:

Modify the entry and then click on this button. If the current dictionary entry has not previously been modified the old entry is duplicated and stored. You can subsequently switch between the *original* and your new *user entry* . If the current entry has already been changed, this function overwrites that change.



Insert

You want to create a new keyword:

Enter the new word in the keyword input field.

Click the mouse on this button.

The program creates a new record so that you can compose the desired entry.

Delete:

In the keyword list, position on the entry that you want to delete.

Press the **** key or click the right mouse button to summon the keyword menu and delete the current entry.

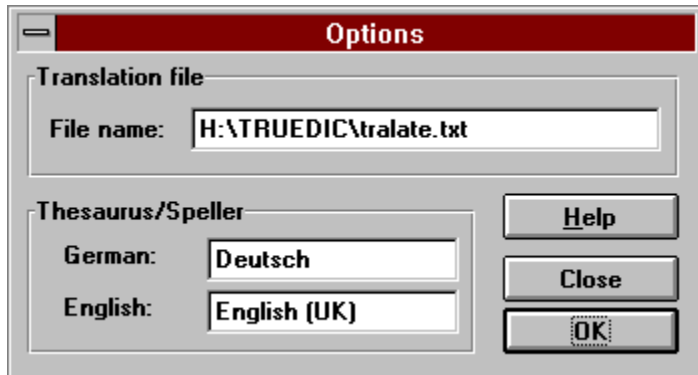
Restrictions:

The supplied phonetic font redefines the following keyboard characters:

(^, °, #, \$, %, &)

No entry may be longer than 15000 characters.

Configuring the dictionary



You access this dialog from the system menu.

Thesaurus/Speller:

German -> The name of the German thesaurus/speller that should be used for German words.

English -> The name of the English thesaurus/speller that should be used for English words.

There are a number of different English thesauri.

The corresponding entries

Australian English	English (AUS)
British English	English (UK)
American English	English (US)

These entries correspond to those available in the menu item *Tools/Language*.

Translation list:

Any translations you make using the button are stored in this text file. In this field you can give the file any name that is permitted for a DOS file, which should include a valid path. If the file is not already present it will be created when you execute the first translation.

Sample file name: D:\TRUEDIC\TRANSL.TXT

With this entry, the translations will be stored in the file **TRANSL.TXT** in the directory **d:\truedic**.

Warning: The translation file must have the format **Text Only**, since new translations are always appended to the end of the file.

We suggest:

that you let the program create the file.

A:

a.	<i>also</i> , auch.
abbr.	<i>abbreviation</i> , Abkürzung.
acc	<i>accusative</i> , Akkusativ.
adj	<i>adjective</i> , Adjektiv, Eigenschaftswort.
adv	<i>adverb</i> , Adverb, Umstandswort.
allg.	allgemein, <i>generally</i> .
Am.	<i>(originally or chiefly) American English</i> , (ursprünglich oder hauptsächlich) amerikanisches Englisch.
amer.	amerikanisch, <i>American</i> .
anat.	<i>anatomy</i> , Anatomie, Körperbaulehre.
antiq.	<i>antiquity</i> , Antike.
ast.	<i>astronomy</i> , Astronomie; <i>astrology</i> , Astrologie.
attr	<i>attributive</i> , attributiv, beifügend.

B - D:

Bibl.	<i>biblical</i> , biblisch.
biol.	<i>biology</i> , Biologie.
Bot.	<i>botany</i> , Botanik
Br.	<i>British English</i> , britisches Englisch.
b.s.	<i>bad sense</i> , in schlechtem Sinne.
bsd.	besonders, <i>especially</i> .
cj	<i>conjunction</i> , Konjunktion, Bindewort.
coll.	<i>collectively</i> , als Sammelwort.
comp	<i>comparative</i> , Komparativ, Höherstufe.
contp.	<i>contemptuously</i> , verächtlich.
dat	<i>dative</i> , Dativ.

E:

eccl.	<i>ecclesiastical</i> , kirchlich.
e-e	eine, <i>a (an)</i> .
e-m	einem, <i>to a (an)</i> .
e-n	einen, <i>a (an)</i> .
engS.	in engerem Sinne, <i>more strictly taken</i> .
e-r	einer, <i>of a (an), to a (an)</i> .
e-s	eines, <i>of a (an)</i> .
et.	etwas, <i>something</i> .
etc	<i>et cetera</i> , usw.
euphem.	<i>euphemistic</i> , euphemistisch, verhüllend.

F-G:

f	<i>feminine</i> , weiblich.
fenc.	<i>fencing</i> , Fechten.
fig.	<i>figuratively</i> , bildlich, im übertragenen Sinn.
fr.	französisch, <i>French</i> .
gastr.	<i>gastronomy</i> , Kochkunst.
GB	<i>Great Britain</i> , Großbritannien.
gen	<i>genitive</i> , Genitiv.
geogr.	<i>geography</i> , Geographie.
geol.	<i>geology</i> , Geologie.
ger	<i>gerund</i> , Gerundium.
Ggs.	Gegensatz, <i>antonym</i> .

H-I:

hist.	<i>history</i> , Geschichte; <i>historical</i> , inhaltlich veraltet.
humour.	<i>humorous</i> , humorvoll.
hunt.	<i>hunting</i> , Jagd.
ichth.	<i>ichthyology</i> , Fischkunde.
impers	<i>impersonal</i> , unpersönlich.
inf	<i>infinitive</i> , Infinitiv, Nennform.
int	<i>interjection</i> , Interjektion, Ausruf.
ir.	irisch, <i>Irish</i> .
iro.	<i>ironically</i> , ironisch.
irr	<i>irregular</i> , unregelmäßig.

J-M:

j-d	jemand, <i>someone</i> .
j-m	jemandem, <i>to someone</i> .
j-n	jemanden, <i>someone</i> .
j-s	jemandes, <i>of someone</i> .
ling.	<i>linguistics</i> , Sprachwissenschaft.
m	<i>masculine</i> , männlich.
m-e	meine, <i>my</i> .
metall.	<i>metallurgy</i> , Hüttenkunde.
meteor.	<i>meteorology</i> , Wetterkunde.
min.	<i>mineralogy</i> , Gesteinskunde.
m-m	meinem, <i>to my</i> .
m-n	meinen, <i>my</i> .
mot.	<i>motoring</i> , Kraftfahrwesen.
mount.	<i>mountaineering</i> , Bergsteigen.
m-r	meiner, <i>of or to my</i> .
m-s	meines, <i>of my</i> .
mst	meistens, <i>mostly, usually</i> .
myth.	<i>mythology</i> , Mythologie.

N-O:

n	<i>neuter</i> , sächlich.
neg	<i>negative</i> , verneinend.
nom	<i>nominative</i> , Nominativ.
npr	<i>proper name</i> , Eigename.
obs.	<i>obsolete</i> , (begrifflich) veraltet.
od.	oder, <i>or</i> .
opt.	<i>optics</i> , Optik.
orn.	<i>ornithology</i> , Vogelkunde.
o.s.	<i>oneself</i> , sich.

P-R:

paint.	<i>painting</i> , Malerei.
parl.	<i>parliamentary term</i> , parlamentarischer Ausdruck.
part	<i>particle</i> , Partikel.
ped.	<i>pedagogy</i> , Schulwesen.
pharm.	<i>pharmacy</i> , Arzneimittelwesen.
phls.	<i>philosophy</i> , Philosophie.
phot.	<i>photography</i> , Fotografie.
phys.	<i>physics</i> , Physik.
physiol.	<i>physiology</i> , Physiologie.
pl	<i>plural</i> , Plural, Mehrzahl.
poet.	<i>poetic</i> , dichterisch.
pol.	<i>politics</i> , Politik.
pp	<i>past participle</i> , Partizip Perfekt, Mittelwort der Vergangenheit.
pred	<i>predicative</i> , prädikativ, als Aussage gebraucht.
pres	<i>present</i> , Präsens, Gegenwart.
pres p	<i>present participle</i> , Partizip Präsens, Mittelwort der Gegenwart.
pret	<i>preterite</i> , Präteritum, 1. Vergangenheit.
pron	<i>pronoun</i> , Pronomen, Fürwort.
prp	<i>preposition</i> , Präposition, Verhältniswort.
psych.	<i>psychology</i> , Psychologie.
reflex	<i>reflexive</i> , reflexiv, rückbezüglich.
rhet.	<i>rhetoric</i> , Rhetorik, Redekunst.

S:

s	<i>substantive</i> , Substantiv, Hauptwort.
schott.	schottisch, <i>Scottish</i> .
s-e	seine, <i>his, ones</i> .
sg	<i>singular</i> , Singular, Einzahl.
sl.	<i>slang</i> , Slang.
s-m	seinem, <i>to his, to ones</i> .
s-n	seinen, <i>his, ones</i> .
s.o.	<i>someone</i> , jemand.
sociol.	<i>sociology</i> , Soziologie.
s-r	seiner, <i>of his, of ones, to his, to ones</i> .
s-s	seines, <i>of his, of ones</i> .
s.th.	<i>something</i> , etwas.
sup	<i>superlative</i> , Superlativ, Höchststufe.
surv.	<i>surveying</i> , Landvermessung.

T-Z:

tel.	<i>telegraphy</i> , Telegrafie.
teleph.	<i>telephony</i> , Fernsprechwesen.
thea.	<i>theatre</i> , Theater.
TM	<i>trademark</i> , Warenzeichen.
TV	<i>television</i> , Fernsehen.
typ.	<i>typography</i> , Buchdruck.
u.	und, <i>and</i> .
univ.	<i>university</i> , Hochschulwesen.
USA	<i>United States</i> , Vereinigte Staaten.
v/aux	<i>auxiliary verb</i> , Hilfszeitwort.
vet.	<i>veterinary medicine</i> , Tiermedizin.
v/i	<i>intransitive verb</i> , intransitives verb, nichtzielendes Zeitwort.
v/impers	<i>impersonal verb</i> , unpersönliches Zeitwort.
v/t	<i>transitive verb</i> , transitives verb, zielendes Zeitwort.
weitS.	in weiterem Sinne, <i>more widely taken</i> .
e.g.	zum Beispiel, <i>for instance</i> .
zo.	<i>zoology</i> , Zoologie.
zs.-,Zs.-	zusammen, <i>together</i> .
Zssg(n)	Zusammensetzung(en), <i>compound word(s)</i> .

Abkürzungen - Abbreviations

A: B-D: E: F-G: H-I:

J-M: N-O: P-R: S: T-Z:

Fatal error!

One or more of the files has been corrupted; you must install the program **from scratch**. Insert the manufacturers original diskette in a drive and use the program manager to start the program **SETUP.EXE** from that drive. You will be guided through the subsequent steps, which are self-explanatory.

Not enough memory.

Terminate one or more other applications and then try to start this one again. If this is not sufficient, use the ControlPanel to increase the virtual memory. If this is still not effective, restart Windows and then try to start the program again.

Could not open databases.

The dialog window which displays this message includes an error number which you can use to establish which error occurred.

0x0001	Invalid function	0x0024	Sharing buffer exceeded
0x0002	File not found	0x0032	Not supported
0x0003	Path not found	0x0033	Remote not listed
0x0004	Too many open files	0x0034	Duplicate name
0x0005	Access denied	0x0035	Bad netpath
0x0006	Invalid handle	0x0036	Network busy
0x0007	Arena trashed	0x0037	Device does not exist
0x0008	Not enough memory	0x0038	Too many commands
0x0009	Invalid block	0x0039	Adaptor hardware error
0x000A	Bad environment	0x003A	Bad network response
0x000B	Bad format	0x003B	Unexpected network error
0x000C	Invalid access	0x003C	Bad remote adaptor
0x000D	Invalid data	0x003D	Print queue full
0x000F	Invalid drive	0x003E	No spool space
0x0010	Current directory	0x003F	Print canceled
0x0011	Not same device	0x0040	Netname deleted
0x0012	No more files	0x0041	Network access denied
0x0013	Write protect error	0x0042	Bad device type
0x0014	Bad unit	0x0043	Bad network name
0x0015	Not ready	0x0044	Too many names
0x0016	Bad command	0x0045	Too many sessions
0x0017	CRC error	0x0046	Sharing paused
0x0018	Bad length	0x0047	Request not accepted
0x0019	Seek error	0x0048	Redirection paused
0x001A	Not MS-DOS disk	0x0050	File exists
0x001B	Sector not found	0x0051	Duplicate file control block
0x001C	Out of paper	0x0052	Cannot make
0x001D	Write fault	0x0053	Interrupt 24 failure
0x001E	Read fault	0x0054	Out of structures
0x001F	General failure	0x0055	Already assigned
0x0020	Sharing violation	0x0056	Invalid password
0x0021	Lock violation	0x0057	Invalid parameter
0x0022	Wrong disk	0x0058	Net write fault
0x0023	File control block unavailable		

AlphaSoft

Software Creation and Marketing
Proprietor: Sigrun Göllner

Aldingerstraße 86

70806 Kornwestheim

Germany

Tel.: +49 (0)7154 18 27 00

Fax.: +49 (0)7154 49 39

File not found.

Either the installation is not correct or the library file has been deleted due to a disk error.

Heres how to clear the problem:

Restart Windows and try to call the program again. If it is still not possible, insert the original program diskette in a drive and call the Setup program to install the missing files.

No help text available

Sorry, we haven't yet managed to complete all the help texts. When we have finished adapting the help texts to the program we will send you the up-to-date files. Please be patient.

File not found.

Either the installation is not correct or the library file has been deleted due to a disk error.

Heres how to clear the problem:

Restart Windows and try to call the program again. If it is still not possible, insert the original program diskette in a drive and call the Setup program to install the missing files.

Specified path is invalid

Check your entry. This message is displayed if you entered an incorrect path.

Common errors: c: winword instead of **c:\winword**
 c \winword instead of **c:\winword**

This version cannot be used over a network

N.B.: The version you have is not a network version. Call us if you would like us to send you information about the network version.

User database is corrupt

Here's how to clear the problem:

Question:

Have you already changed any dictionary entries?

Yes:

You will have to reorganize your user database.

Please first backup the two files engdeu.dic and deueng.dic from the TrueDic directory in which your changes are stored. Then call us: if you are a registered user we will send you a program to reorganize your database.

No:

Use the File Manager to check on the size of the files engdeu.dic and deueng.dic. If the size of either file is 0, please delete it. Check that there is at least 1MB of available space on your computer's hard disk. Terminate Windows and then carry out a surface test of your disk under DOS by entering scandisk (drive containing TrueDic, e.g. C:). Next time you change an entry the dictionary program will attempt to recreate the files. If you still cannot modify dictionary entries, call us. We will try to sort out your problem as quickly as possible.

Entry is too long

You have exceeded the maximum possible length of an entry. Condense your entry and then try saving it again.

