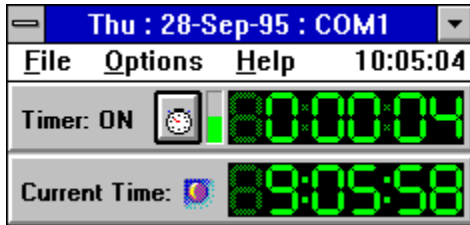


# Using Easy Cost Timer



## Title Bar

The Title Bar always displays the current day, date, and COM port.

## Start/Stop the Timer



Select this button to Start/Stop the Timer.

The stopwatch picture changes to show the current state of the Timer.

 Timer is **OFF**

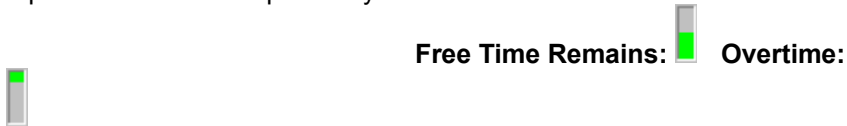
 Timer is **ON**

You can also toggle the timer On/Off by pressing **ENTER**, or **F8**, while Easy Cost Timer has the focus.



## Free Time Monitor

The gauge between the Start/Stop button and the Timer displays the Percentage of Free Time Remaining for the current month. In the beginning of the month the gauge is full. As you use more and more of your free time, the gauge empties. Once your free time has expired, the gauge begins to fill again, from the top to the bottom to represent your Overtime.



Double-click on the Free Time Monitor, or press **F11** to display the Free Time... message which tells you how much Free Time you have left, and how many minutes you should average per day to meet your Free Hours for the month. This number is a "glide-path" for using all your Free Hours, and no more!






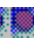

You can display this "glide-path" value on the Timer by enabling the **Display Daily Average/Overtime** option in the Defaults dialog. If you consistently use less than the average, it could grow to a large value, as you see here. The larger the value, the better your chance of using less than your Free Hours.

## Timer Display

The Timer always starts at 00:00:00, and displays the current elapsed time since the Timer was started. This time is also displayed in the icon text when Minimized, and the Timer is running.

## Clock Display

Select Options|**Show Clock** from the Menu, or press **F3** to toggle the display of the Clock.

The Sun graphic      displays the time of day (AM/PM), and is updated every three hours. It's

shown here in its transition from 12 Noon, 'till 12 Midnight (AM is the same, but is bright on the right hand side of the graphic).

Easy Cost Timer will "remember" whether the clock was displayed at the end of the current session, and will set it appropriately to begin the next session.

Copyright 1995, by P. Scott Antony

# Monthly Data Menu

As well as displaying the Monthly Summary dialog when you click it, this menu item also displays your current Monthly Status in one of **three** ways (depending on your choice in the Monthly Summary dialog).

**Total Elapsed Time** for the current month.

**Total Cost** for the current month.

**Total Overtime Cost** for the current month.

**All 3** (\*when the timer's ON, it rotates every 5 seconds).

Copyright 1995, by P. Scott Antony

# Monthly Summary

Select **Options|Month Summary...** from the menu, click the Time/Cost menu item, or press **F5** to display the dialog below, which calculates the charges for the current month.

**Cost: September - 10:05:00**

Hours Used:

- Free Hours:

= Paid Hours:   Basic  SValue

\* Cost/Hr:  =

Overtime Used:  (\$0.049/min) +

Monthly Fee:

**Charges for: 🌟 September**

\* Exch Rate:  =

Ending: Saturday, September 30, 1995

**Best plan for September: SVALUE**

Show Monthly Time in Menu

Show Monthly Cost in Menu 

Show Overtime Cost in Menu 

Show All (\*Timer ON Only)

**Cost: September - 10:05:00**

Hours Used:

- Free Hours:

= Paid Hours:   Basic  SValue

\* Cost/Hr:  =

Free Time Remaining:  (\$0.033/min) +

Monthly Fee:

**Charges for: 🌟 September**

\* Exch Rate:  =

Ending: Saturday, September 30, 1995

**Best plan for September: SVALUE**

Show Monthly Time in Menu

Show Monthly Cost in Menu 

Show Overtime Cost in Menu 

Show All (\*Timer ON Only)

10:05:00 under the Basic Plan

10:05:00 under the Super Value Plan

The title bar displays the current month, and its total elapsed time in the standard format. The remainder of the dialog is expressed in decimals. The side by side dialogs are displayed here to show that **if you AVERAGE over 10:05:00 per month**, you're *generally* better off with the Super Value Plan. **Note the differing fees, and free hours, but the same bottom line.** One more minute and the Basic Plan's total charges exceed the SValue's monthly fee, and with SValue, you'd still have almost 10 more free hours to

blow (don't use this as a justification to your spouse ;-)! In addition, overtime hours (> 20) are \$1/hour less under the SValue Plan. **Obvious footnote:** If this was an extreme month, and the rest are under 10 hours, the Basic Plan is obviously your best choice. See: [Comparing Price Plans](#).

**How the Calculations are made:**

In the example above, 5 minutes *in decimal hours* is  $(5/60)=0.083$ , so 10 hours and 5 minutes equals 10.083 **Decimal Hours Used**. The number of **Free Hours** is subtracted, leaving the number of **Paid Hours**. (if free hours is greater than hours used, this will be 0.000). The Paid Hours are then multiplied by the **Cost/Hr** to determine the **Overtime Cost**. Any overtime cost is then added to the **Monthly Fee**, to determine a **Sub-Total Cost** (not displayed) which, when multiplied by the **Exchange Rate**, gives the **Total Cost** for the month. Whew! In algebraic terms:

$$\begin{aligned} \text{*Hours Used} &= \text{Hours} + (\text{Minutes}/60) \\ 10.083 &= 10 + (5/60) \end{aligned}$$

$$(((\text{*Hours Used} - \text{Free Hours}) * \text{Cost/Hr}) + \text{Monthly Fee}) * \text{Exchange Rate} = \text{Total Cost}$$

For the dialogs above:

**Basic Plan:**  $(((10.083 - 5) * 2.95) + 9.95) * 1.000 = 24.95$

**SValue Plan:**  $(((10.083 - 20) * 1.95) + 24.95) * 1.000 = 24.95$

note: ECT will not multiply a negative number, so  $(10.083 - 20)$  results in 0, so 0 is being added to 24.95, since (Paid Hours) is negative.

Simply select the "**Basic**", or "**SValue**" option buttons to automatically set the rates.

You can change the **Exchange Rate**, **Free Hours**, **Cost/Hr**, and **Monthly Fee** entries to other values if you want to use the timer with something other than CIS. However, when you change a value you **MUST** press the **ENTER** key for it to be accepted by Easy Cost Timer. Once changed ECT will use the new numbers to calculate your charges. If the Yearly Summary is visible, it will be updated to the new charges as well.

**IMPORTANT:** Do not confuse the decimal hours calculated here with what's being stored in the ETIMER.INI file for the monthly times! Those values are stored in decimal DAYS, and are comparable to the result you'd get from a spreadsheet's =TIME(hour, minute, second) function with any integer portion relating to multiples of 24 hours. So 32 hours would be stored as 1+1/3 Day, as in:  $\text{INT}(\text{hours}/24)+\text{TIME}(\text{MOD}(\text{hours},24), \text{minute}, \text{second}) = 1.333333$  for 32 hours. This is a simple example without minutes, and seconds, and in reality ECT does it more efficiently and exactly, but this is the basic model.

The Monthly Summary dialog is also where you can specify what is displayed in the Timer's menu.

**Show Time in Menu**

When maximized, this option displays the total elapsed time for the month.

When minimized, and the timer is running, this option shows the elapsed time for the current session (\*same as above if the timer is off).

**Show Monthly Cost in Menu**

When maximized, or minimized, this option displays the Costs for the current month.

**Show Overtime Cost in Menu**

When maximized, or minimized, this option displays the total Overtime Costs for the current month.

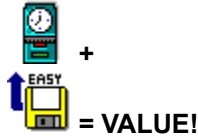
**Show ALL in Menu (\*Timer On Only)**

When maximized, or minimized, AND the timer is running, this option displays each of the other three options, switching every five seconds. (ECT will randomly pick one each

time it's started when the timer is off, and will not switch until the timer is started).

Copyright 1995, by P. Scott Antony

# Special Offer!!!



**Easy Cost Timer** was created by the Author of another \$\$\$ saving program for CIS called **Easy Uploads**. And as such, you will receive Easy Cost Timer **ABSOLUTELY FREE**, when you register Easy Uploads, (and you only have to enter one registration code)! Easy Uploads can be found in many Forums on CompuServe, is only \$15, and can be register on the CompuServe SWREG service ([a listing of forums is included at the end of this topic](#)).

## Partial List of Features:

- Set up ALL your Contribute data **Offline**.
- Consistently fills the Contribute dialog, time after time.
- Create **DIZ** files from your Descriptions.
- Forum Tracker helps you remember when and where you uploaded your file.
- Print your Upload, Source ZIP, and Forum Tracker Data.
- Spell check with Excel, or Word.
- Estimate the Time to Upload and Download Files.
- View the contents of your Source ZIP archive.
- Run your Associated ZIP program.
- Works with German and French versions of WinCIM (Spanish coming soon).



\*Included in the **Downloadable Noteables**, CompuServe Magazine, September, 1995.

**Easy Uploads can be found in the following Forums as: EASYUP.ZIP**

Bolded entries are recommended if nothing looks familiar.

Borland C++ Win-OS/2

CIS Applications

CSNav Support

Deutsches Computer

European

IBM Communications

Informatique France

Internet New Users

Italian

LDC Spreadsheet

MS Basic

MS Windows Workgroups

PBS Applications

PC Expert

PC Mag UK

PC World Online

Sight and Sound

UK Computing

Utilities/Tips

VBPJ

Win Utilities

**WinCIM General Support**

**GO WCIMGE**

**WinCIM Technical Support**

**GO WCIMTE**

Windows Connectivity

Windows SDK

**Windows Shareware**

**GO WINSHARE**

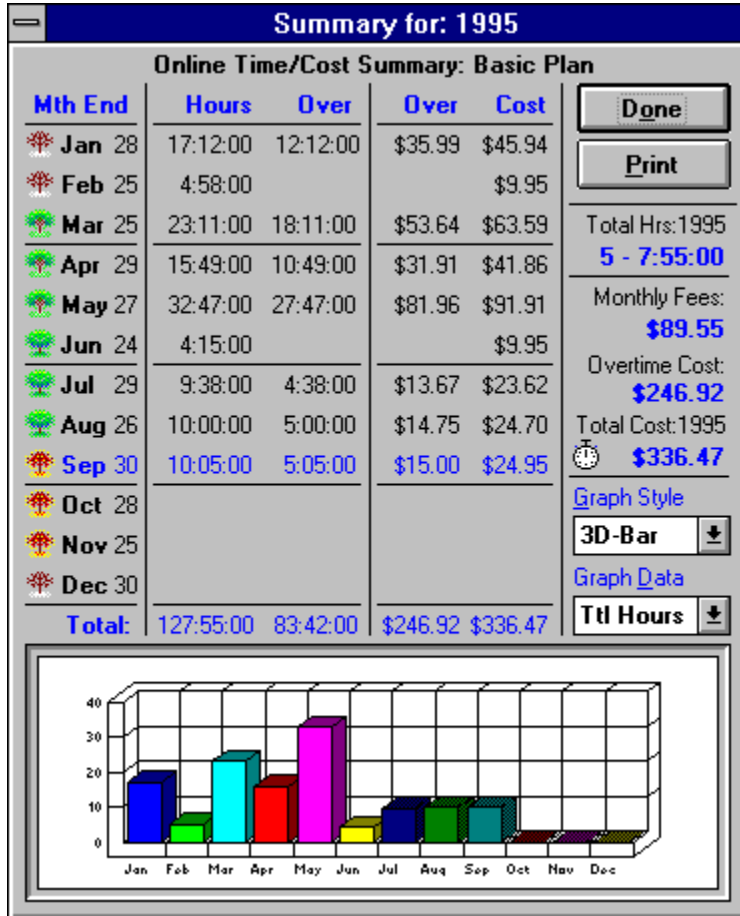
Windows Sources

WINUSER (e.g. WUGNET)



# Yearly Summary

Select **Options|Year Summary...** from the Menu, or press **F6** to display the dialog below.



Your yearly bill is broken out by Total Hours, Overtime Hours, Overtime Cost, Total Cost, and the Total Monthly Fees. When you start out, things will be pretty sparse in this dialog, but if you'd been using ECT all year, the dialog might look like the one above (hopefully your bill isn't this high!).

There's nothing too complex here, just some basic calculations. However, note that instead of choking when you go past 24 hours in a month, ETC displays them as you'd like to see them. 32 hours is 32 hours, and not 1 Day + 8 hours. Note that in the example above, the Total hours for the year is a little over 123 (123:04:00). If you'd really like to know what that is in days and hours, look under the Print button, and you'll see that it's the equivalent of 5 Days - 3:04:00 (straight!).

The dates next to the months indicate the last day of the billing cycle. Click on a month name or ending date, to display the start and end dates for the billing cycle.

You can graph your data with Pies, Bars, or Lines, and even copy the graph to the Clipboard, to paste it to your favorite bitmap editor like Paintbrush! Simply double-click anywhere in the graph, and it will be copied to the clipboard. AND, if you have an association set up for .BMP in File Manager, ECT will start the program for you and paste it automatically! (if you use a shareware program with a splash screen, you'll have to choose Paste yourself)

Copyright 1995, by P. Scott Antony

# Download Estimate


Select **Options|Download Estimate...** from the Menu, or press **F4** to display the dialog below.


**Download Time Estimate for: 100,000 Bytes**

Download File Size:  Estimates assume no compression. Use a factor of 1.15 for compression.

@Baud Rate	Time Estimate	x	<input type="text" value="1.00"/>	=	Your Estimate	x	<input type="text" value="2.95"/>	=	Cost Estimate
2400	0:06:57				0:06:57				\$0.34
9600	0:01:44				0:01:44				\$0.10
14400	0:01:10				0:01:10				\$0.10
19200	0:00:52				0:00:52				\$0.05
28800	0:00:34				0:00:34				\$0.05

Enter a Conversion Factor to Compensate for Modem, and other Variations.

\$/Hour Paid  **!!!** Sep. Hrs > Free

**Conversion Factor:**  
If You do Better than the Estimate, enter a Factor < 1.00 (e.g. try 0.95).  
If You do Worse than the Estimate, enter a Factor > 1.00 (e.g. try 1.15). 

Simply enter the size of the file you want to download, and the time and cost will be estimated. After you've used the estimate a few times, you may find that you're doing better or worse than the estimate, so I've included a conversion factor so you can more accurately estimate **your** downloads.

If you see multiple files you want, and don't want to do the addition in your head, you can click on the Calculator icon to launch the Windows Calculator, and add up the sizes before you enter a value to the dialog.

Also notice the cash register icon. If you're still using your free hours for the month, the icon shows no red marks in the display, however once you pass your free hours, the icon looks like above to alert you that it's gonna cost you! (hint: click on the cash register to hear the overtime sounds).

**NOTE:** The estimate uses the **Cost/Hr** from the Monthly Summary dialog. You cannot change this value from the estimate dialog.

# File Menu

<b>File</b>
<b>O</b> pen Log File
<b>C</b> lear Log File
<b>E</b> xit

If you have the **Log Title Bar Changes** option enabled in the Defaults dialog, the two Log items will be enabled so you can open or clear the log file. When you clear the log file, ECT will give you an option of backing it up first. If you choose to back it up, it will be given a filename of the current day (e.g. 092595.LOG).

Note: By default, ECT will open the log file with Notepad. However, since it's limited in the size of files it can open, you may need to change this if your log file gets very big. To change the editor ECT uses to display the log file, ADD a new line to the ETIMER.INI file.

```
[Timer]
Editor=c:\windows\write.exe
```

You must enter the FULL PATH and filename of your editor.

Copyright 1995, by P. Scott Antony

# Help Menu

<b>Help</b>	
<b>C</b> ontents	<b>F1</b>
<b>S</b> earch	<b>F2</b>
<b>A</b> bout...	

Nothing new here. Just your standard Help options, and the ubiquitous About option.

Copyright 1995, by P. Scott Antony

# Easy Cost Timer©



Version 1.4



Copyright 1995, by P. Scott Antony  
74002.2373@CompuServe.com  
PSAntony@aol.com

Easy Cost Timer (ECT) is a simple but powerful program to help track your Online Charges with ANY program you want to set it up for (including the new CompuServe pricing plan effective September 10, 1995). While geared for CIS, it can also be used with other services like America Online©, etc. with little extra effort. You can install as many timers as you wish to multiple directories, and track your programs separately, or have one timer track multiple programs, each adding to a single total! Or better yet, if your a big net surfer, do both! Whatever suits you best.

ECT can launch your online program, and close automatically when you exit! ECT tracks your monthly times and charges, totals them up, and even graphs the results for you! (6 different graphs, and any graph can be copied, and pasted to Paintbrush, or other Bitmap editor, just double-click on it!) A standard Clock is also included, and there's even a Download Time estimator to help you figure the time and cost of downloading files, while you're there!

ECT works on a **one minute minimum basis**, so you never have to make any calculations. In addition, it also determines the proper billing cycle for CIS (billing cycles end on the LAST Saturday of each month. GO RATES for this and more info.). For example: the last Saturday in October, 1995 is the 28th, so on **Oct. 29th thru the 31st**, ECT will know to add any new elapsed time to **November** (November's last Sat. is the 25th so its billing cycle is Oct 29 - Nov 25). When this "overlap" occurs, ECT will add an asterisk to the date in its Title Bar, and to the Month to add the time to in the Exiting dialog. (ECT can also work in an "every second counts" basis which is currently undocumented, to keep things from getting messed up - email me for info on changing this behavior).

Registered users can **automatically** Upgrade Easy Cost Timer© by downloading the newest version from CompuServe or other BBS when it becomes available (your registration will be automatically recognized by the new version).

There will **Never be an Upgrade Charge**, even if I later increase the asking price - **ALL** future versions are **FREE** to registered users, so lock yourself in now at this unbelievable price of only \$7!

[Special Offer](#)

[Warranty Disclaimer](#)

[Registering via SWREG](#)

[Registering via Mail](#)

[Installing Easy Cost Timer/Uninstalling](#)

[Using Easy Cost Timer](#)

[File Menu](#)

[Options Menu](#)

[Download Estimate](#)

[Monthly Summary](#)

[Yearly Summary](#)

[Comparing Price Plans](#)

[Defaults](#)

[Colors](#)

[Edit Monthly Time](#)

[Help Menu](#)

[Monthly Data Menu](#)

[Sounds](#)

[Hints/Tips/Troubleshooting](#)

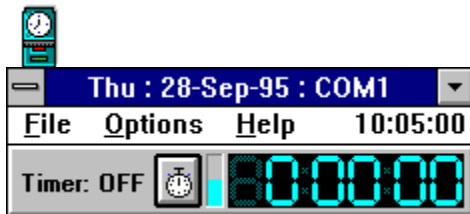
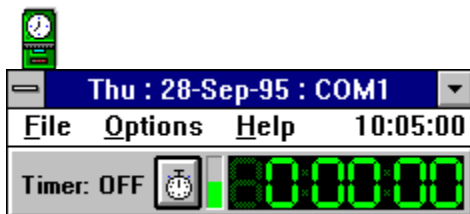
[Version Information](#)

Copyright 1995, by P. Scott Antony

# Colors

## Change the Color of the Timer and its Icon!

Select the **Options|Color** menu, or double-click on the digits in the Timer to change the Color!  
If you can't see the colored digits on your monitor, there's a Reversed option as well!





# Sounds

## Easy Cost Timer plays 2 sounds (WAV files).

Click on the icons below to hear the sounds.

Select **Options|Sound** from the Menu to toggle whether sounds are played. A check mark next to the menu (or lack thereof) shows the current sound status. **NOTE: NO sounds will be played until you exceed your free hours!**



The first sound is used to signify that your Free Hours for the current month have expired, and sounds like a cash register (MONTHUP.WAV).



The second sound signifies that another overtime minute has passed, and sounds like placing your credit card on the counter, or dropping another nickel in the pot (MINUTE.WAV).

---

**If you have a different WAV file that you'd like to use instead of the ones provided, you can do so in one of two ways. (HINT: Click on the cash register icon in the Download Estimate dialog, to test your sound files when you're done.)**

- 1). Copy your WAV files to your Easy Cost Timer directory, using the names given above (overwriting the supplied files as: MONTHUP.WAV, and MINUTE.WAV respectively). You **MUST** use these two names, and the files **MUST** be in the Timer directory.

Example:

```
C:\>copy c:\windows\tada.wav c:\cserve\timer\monthup.wav
```

will replace the monthup sound with tada, but still retains the name monthup.wav.

**OR**

- 2). Edit your Easy Cost Timer INI file (ETIMER.INI in your ECT directory), and specify where to find the files. You must enter both **entire** lines shown in **blue** below, since they won't automatically be available. You'll see the standard options, like Color, and then at the end, enter the lines with your filenames...

```
[Timer]
Color=1
OnTop=0
WAVOverFree=c:\windows\tada.wav      (replaces MONTHUP.WAV)
WAVMinute=c:\windows\chimes.wav     (replaces MINUTE.WAV)
```

With this method you **MUST** enter the entire PATH and extension of the file.

**IMPORTANT:** A sound card, or PC Speaker Driver is required to hear the sounds, or you will simply hear the default BEEP.

# Options Menu

Options		
Hide <u>C</u> lock		F3
Download <u>E</u> stimate...		F4
<u>M</u> onth Summary...		F5
<u>Y</u> ear Summary...		F6
Compare <u>P</u> lans...		F7
<u>D</u> efaults...		F9
<u>F</u> ree Time...		F11
<b>Color</b>		
	<u>R</u> ed	Ctrl+R
<u>E</u> dit <u>T</u> ime...	Ctrl+E	√ <u>G</u> reen Ctrl+G
<u>R</u> eset <u>T</u> imer...	Ctrl+S	<u>B</u> lue Ctrl+B
		<u>R</u> everse Ctrl+V

The Options menu is one way to display the summary dialogs and download estimate (in addition to using the function keys), and is where you access the Time editor.

## Show Clock F3

When the clock is hidden, this menu will be **Show Clock**, and when the clock is displayed, it will read **Hide Clock**. Enough said?

## Download Estimate... F4

Display the Download Estimate dialog.

## Month Summary... F5

Display the Monthly Summary dialog.

## Year Summary... F6

Display the Yearly Summary dialog.

## Compare Plans... F7

ECT will rearrange the position of the Timer and Summary Windows, so everything is visible, and display a Yearly Comparison. See: Comparing Price Plans

## Defaults... F9

Display the Defaults dialog.

## Free Time... F11



Double-click on the Free Time Monitor, or press **F11** to display the Free Time... message which tells you how much Free Time you have left, and how many minutes you should average per day to meet your Free Hours for the month.

## Color

When selected, this menu displays a sub menu with four color choices. See: Colors to view your choices.

## Edit Time... Ctrl+E

Display the Edit Time dialog.

**Reset Timer...**

**Ctrl+S**



If you'd like to reset the timer, select this option. You can also right-click on the Start/Stop button to reset the timer. This option is disabled if the timer = 0:00:00.

Copyright 1995, by P. Scott Antony

# Installation

**Please see the end of this topic for UnInstall instructions if you're so inclined.**

Installing Easy Cost Timer is simplified with the use of a Professional Setup program, similar to most basic software installations you've seen. After unzipping ETIMER.ZIP to a temporary directory or floppy disk, simply double-click on SETUP.EXE from File Manager, and follow the prompts. When you're finished, be sure to clean up the temporary directory if necessary!

In addition to the files provided, ECT also requires **VBRUN300.DLL**, and **THREED.VBX** which are already on most users systems, and not included to save download time. Check the CompuServe Help forum for a listing of forums which have these files available, if you don't have them yet.

The Setup program copies a few support files to your \WINDOWS\SYSTEM directory, and the main program files to a directory of your choice. (**C:\CSERVE\ETIMER** is the default). It will also create a Program Manager Group and icons for you. Once this is done, you're all set to start using the Timer.

But hold on... **you can further enhance your icon to automatically start WinCIM, CSNav, or other online program, at the same time as the Timer.** All you have to do is alter the Command Line for the icon. Actually you can start ANY program this way since Easy Cost Timer will start any program included in its command line. You simply need to put ECT "in-between", so the icon starts ECT, and ECT starts your program.

## **Example of setting up an icon to launch WinCIM...**

If you don't care about keeping your current icon, you can skip to #2 and modify an existing icon.

- 1). Make a copy of WinCIM's icon in your Easy Cost Timer Group.
  - a). Open the Program Manager group that contains your WinCIM (or other) icon.
  - b). Open your Easy Cost Timer group.
  - c). Arrange the groups so they can both be seen.
  - d). Click Once on your WinCIM icon.
  - e). Hold CTRL, and DRAG the icon over your ECT group.
  - f). Let-go of the mouse button.  
A copy of the WinCIM icon should now be in your ECT group.
  
- 2). Alter the Command Line for the new icon.
  - a). Click Once on the **new** WinCIM icon in the ECT group.
  - b). Hold ALT, and press ENTER to display the Properties dialog
  - c). Click in the **Command Line** edit box, and press HOME.
  - d). Enter the FULL PATH and name for the **ETIMER.EXE** you want WinCIM to use.
  - e). Enter a space, to separate it from the path to your program.

If you installed to the default directory, your command line will look like:

e.g. the part in black was already there, you type what's in **blue** and a space (denoted by \_)

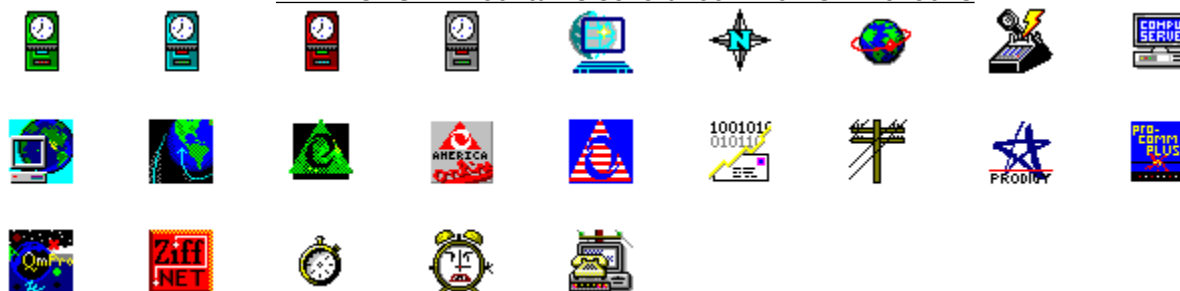
**c:\cservice\timer\timer.exe\_ c:\cservice\wincim\wincim.exe**

- 3). Optional - Alter the Description for the new icon.
  - a). Click in the **Description** edit box, and change it to **WinCIM with ECT** for example.
  
- 4). Select the OK button, you're done!

**NOTE:** This will change the icon to ECT's icon. If you want your program's icon back, open the properties dialog again, and select the **Change Icon** button. Then select the **Browse** button, and select

**ECTICONS.DLL**, or find the EXE for your program (e.g. c:\cserve\wincim\wincim.exe). and select the OK button. Select OK again, and your icon should be back.

**ECTICONS.DLL contains several common Online Icons**



Now when you double-click on the icon, it will start the Timer, and the Timer will start WinCIM! In addition, when ECT starts a program this way, the **Exit with Program** menu item is visible. Enable this menu item to make ECT Exit automatically, when you Exit the program you specified in the Command Line, so you don't have to close two programs!

If you want to use the SAME ETIMER.EXE with CSNavigator as well, simply copy CSNav's icon to the ECT group, and repeat the remaining steps. With this setup, using either program will log time to the same file, and you maintain ONE total for the month.

If you have another online service you want to time, and keep separate from the two we just set up, you can simply install another copy of ECT to a new directory, and any time you log with it will remain separate, since it exists in a different directory. **Note however, that you should not run more than one copy of ECT at a time.** If you install to multiple directories, and you want to keep the file size down, delete all but one of the Help files for ECT.

**UNINSTALLING Easy Cost Timer**

To uninstall ECT, you simply need to delete the directory you installed it to, and clean up a few files in your \WINDOWS\SYSTEM directory. If you installed to an existing directory, and "merged" ECT files with others, you'll need to remove:

- ETIMER.EXE**
- ETIMER.HLP**
- ETIMER.INI**
- MONTHUP.WAV**
- MINUTE.WAV**

**IMPORTANT NOTE:** Whenever removing VBX or DLL files from \WINDOWS\SYSTEM, back them up to a ZIP archive first (or to floppy) since other programs may also need them (WinTune© for one uses the 3 graph modules, and I would guess that a lot of games use PICCLIP). After a week or so, if everything is alright, then just remove the archive. I suppose you could always re-install the Timer to get them back as well.

The files installed to **\WINDOWS\SYSTEM** are:

- PICCLIP.VBX** for the digits
- GRAPH.VBX** 3 modules for the graphs
- GSW.EXE**
- GSW.DLL**

Copyright 1995, by P. Scott Antony

# Warranty Disclaimer

Copyright/License/Warranty

**Easy Cost Timer**

**Copyright © 1995 by P. Scott Antony.**

All rights reserved.

Contact me at:

74002.2373@CompuServe.com

PSAntony@AOL.com

or P.O. Box 11047

Shorewood, WI 53211

## License Agreement

**You should carefully read the following terms and conditions before using this software.**

### Shareware Version

#### Evaluation and Registration

Easy Cost Timer is distributed as Shareware. Shareware is a form of software distribution, not free software. You are hereby licensed to use this software for evaluation purposes without charge for a period of 30 days. If you use this software after the 30 day evaluation period a registration fee of \$7 is required. Payments must be in US dollars drawn on a US bank, and should be sent to P. Scott Antony, P.O. Box 11047, Shorewood, WI 53211.

See: Registration

Unregistered use of Easy Cost Timer after the 30-day evaluation period is in violation of U.S. and international copyright laws.

When payment is received you will be sent a registration code to upgrade to the Registered Version. There are significant advantages to registering your copy, not least the continued availability of good quality software at reasonable prices. Registrations allow me to improve the program, and create more. Keeping the Shareware concept alive benefits you with access to thousands of inexpensive try-before-you-buy programs.

Please note that "buying" this program from a Shareware distributor does not count towards registering it! I do not receive any money from Shareware distributors. My only payment comes when you register directly with me.

### Distribution

Provided that you verify that you are distributing the Shareware Version, you are hereby licensed to make as many copies of the Shareware version of this software and documentation as you wish; give exact copies of the original Shareware version to anyone; and distribute the Shareware version of the software and documentation in its unmodified form via electronic means.

You are specifically prohibited from charging, or requesting donations, for any such copies, however made; and from distributing the software and/or documentation with other products (commercial or otherwise) without prior written permission, with one exception: Disk Vendors approved by the Association of Shareware Professionals are permitted to redistribute Easy Cost Timer, subject to the conditions in this license, without specific written permission.

### Registered Version

One registered copy of Easy Cost Timer may either be used by a single person who uses the software personally on one or more computers, or installed on a single workstation used non simultaneously by multiple people, but not both.

### **Governing Law**

This agreement shall be governed by the laws of the State of Wisconsin.

### **Disclaimer of Warranty**

**THIS SOFTWARE AND THE ACCOMPANYING FILES ARE SOLD "AS IS" AND WITHOUT WARRANTIES AS TO PERFORMANCE OF MERCHANTABILITY OR ANY OTHER WARRANTIES WHETHER EXPRESSED OR IMPLIED. Because of the various hardware and software environments into which Easy Cost Timer may be put, NO WARRANTY OF FITNESS FOR A PARTICULAR PURPOSE IS OFFERED.**

**Good data processing procedure dictates that any program be thoroughly tested with noncritical data before relying on it. The user must assume the entire risk of using the program. ANY LIABILITY OF THE SELLER WILL BE LIMITED EXCLUSIVELY TO PRODUCT REPLACEMENT OR REFUND OF PURCHASE PRICE.**

Copyright 1995, by P. Scott Antony





# Comparing Price Plans

Select **Options|Compare Plans...** from the Menu, or press **F7** to compare the Basic, and Super Value Pricing Plans offered by CompuServe®.

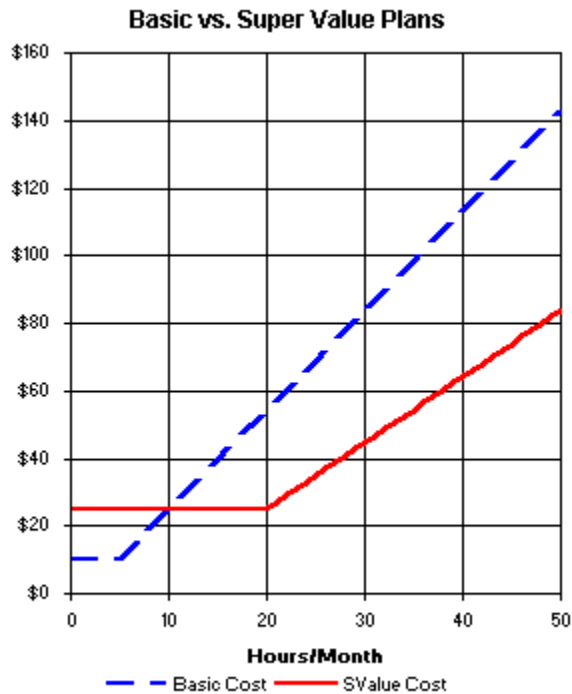
ECT will rearrange the position of the Timer and Summary Windows so everything is visible, and display a Yearly Comparison message. Once all the dialogs are displayed, you can select the **Basic** and **SValue** option buttons on the Monthly summary dialog, and the yearly summary will recalculate to show the respective monthly charges under the different plans (the graphs are updated as well).

**FYI:** The following is a snapshot of an Excel Spreadsheet I put together to compare the plans. It shows that if you **average over** 10 Hours and 5 Minutes **per Month**, the VALUE plan is cheapest.

CIS Pricing Plan	Monthly Fee	Free Hrs	Add'l Hrs
Basic	\$9.95	5	\$2.95
Super Value	\$24.95	20	\$1.95

Hours per Month	Basic Cost	SValue Cost	Std vs. Value	Better Plan
0	9.95	24.95	-15.00	Std
1	9.95	24.95	-15.00	Std
2	9.95	24.95	-15.00	Std
3	9.95	24.95	-15.00	Std
4	9.95	24.95	-15.00	Std
5	9.95	24.95	-15.00	Std
6	12.90	24.95	-12.05	Std
7	15.85	24.95	-9.10	Std
8	18.80	24.95	-6.15	Std
9	21.75	24.95	-3.20	Std
10	24.70	24.95	-0.25	Std
10.1	25.00	24.95	0.05	Value
11	27.65	24.95	2.70	Value
12	30.60	24.95	5.65	Value
13	33.55	24.95	8.60	Value
14	36.50	24.95	11.55	Value
15	39.45	24.95	14.50	Value
16	42.40	24.95	17.45	Value
17	45.35	24.95	20.40	Value
18	48.30	24.95	23.35	Value
19	51.25	24.95	26.30	Value
20	54.20	24.95	29.25	Value



# Hints/Tips/Troubleshooting

## Q1. ECT can't find my COMM port, and has disabled the Auto-Start feature. What's wrong?

- A. If this happens, you'll also notice that in the Title Bar it reads: ... : **NO COM!**  
To set it to only look at a particular port, open the [Defaults](#) dialog, and select the proper port.

Note that COM3 and COM4 aren't supported very well by Windows, and hence, your best bet is COM1 or COM2.

---

## Q2. The Auto-Start feature is starting the timer too quickly when I start to log on. Why is this happening?

- A. To keep the program as small as possible, and allow it to work with programs other than CIS's, I'm only watching to see when the comm port is opened, and closed, and NOT for when the actual "You're CONNECTED" message is received. To make it wait, you can append the number of seconds to the command line for the icon that launches ECT and your program.

For example: to make CSNav wait 35 seconds once the port is open, use the following:

```
c:\cserve\etimer\etimer.exe c:\cserve\csnav\csnav.exe 35
```

This is identical to the **AutoWait** parameter formerly used in the INI file in version 1.2. It has been changed so that you can use both WinCIM, and CSNav with the same timer instead of two timers, since CSNav needs a wait, and WinCim doesn't. Take a look at how long it's taking to connect with your software, and enter an appropriate number of seconds to the command line.

To let you know it's waiting, where you normally see the text "Timer ON/Timer OFF" next to the start button, ECT will do a little countdown until the timer is started. Note however, that the countdown is not displayed when ECT is an icon. For more on Auto-Start, see: [Setting Default Options](#).

---

## Q3. I'm sick of saying "Yes, Add the new time to my monthly total", when I Exit ECT. Can I get it to stop doing this?

- A. You can add an entry to the [ETIMER.INI](#) file.

```
[Timer]  
AutoIncur=1
```

Setting **AutoIncur** to **1** will, as it says, **Automatically** ADD any new elapsed time to the current month when you Exit. Remove the line, or set it to 0 to return to the default behavior. Be careful with this one!

# Defaults

Select **Options|Defaults...** from the menu, or press **F9** to display the dialog below, which holds your defaults

**Easy Cost Timer Defaults**

Give Up Control to Windows  Time(s) Before Updating Timer Display.

Auto-Start when COM Port Opens.

COM 1  
 COM 2  
 COM 3  
 COM 4

Log Title Bar Changes.

Play Sounds.

Always On Top.

Display Daily Average/Overtime.

Exit with Program Started in Command Line.  
None Currently In Use.

**Billing Cycle**

The billing cycle ends on the  
   
of every Month.

Default

Current Billing Month: September  
Starting: Sunday, August 27, 1995  
Ending: Saturday, September 30, 1995

Cancel Save

## Give Up Control to Windows...

If it seems like ECT is hiding your online application from performing as quickly as it should, enter a number greater than 1. The higher the number the more processor time will be allowed for your application, and less for the timer. Large numbers will make it look at times as if the Timer is stalled, or not updating as often. While it will not be as immediately accurate, in the end your online time will be accurate. In plain english this options says "Give control to the online program x times before I update the timer display (note that this does not say "before I update the timer", but "before I update the timer **display**").

## Auto-Start

When enabled, the Timer will start automatically when the Comm port is opened by your online program (not necessarily when you actually connect). This works VERY well with WinCIM®, since WinCIM takes over the system until you connect, and the Auto-Start feature doesn't start the Timer until you're actually connected. However, for programs like CSNav® which open the comm port and do not take over the system immediately, the Timer can start early, throwing off the actual "connect time". For this reason I have included a method for making it "Wait" a specified number of seconds after the comm port is opened. If you use CSNav, or other online program that behaves similarly, simply append the number of seconds you want it to wait after opening the comm port before starting the timer to the end of the command line for the icon you set up according to the [Installation](#) instructions). When in use, where you see the "Timer ON/Timer OFF" text next to the start button, ECT will do a little countdown until the timer is started. See [Hints/Tips/Troubleshooting](#).

## Log Title Bar Changes

When enabled and the Timer is running, ECT will log to a text file whatever's in the Title Bar of the active application. To view or clear the log file, select an option from the [File menu](#).

## Play Sounds

When enabled, and you've passed your free hours for the month, sounds

will be played to remind you... "you're paying extra for this". See: [Sounds](#)

### **Always On Top**

On Top allows the timer to be always visible on your desktop. When enabled it will float above all other applications and remain visible, even as an icon! If this annoys you, you can disable this behavior.



### **Display Daily Average/Overtime**

When enabled ECT will display how many minutes you should average per day to meet your Free Hours for the month.

### **Exit with Program Started in Command Line**

When enabled, ECT will exit, when you exit the program that ECT started in the Command line for it's icon. See: [Installation](#).

### **Billing Cycle**

The standard Billing cycle for CompuServe ends on the Last Saturday of each month. If yours is different, or you're using ECT with another online service, you can change this to any of the other possible options, and ECT will automatically reset the monthly log on the calculated end date.

# Edit Time

Select **Options|Edit Time...** from the menu to display the dialog below, where you can Edit the Time for the Current Month.

**Edit Time for: September**

You can alter the logged time for September in one of two ways.

1) Add or Subtract a Specified amount of time from the Current Total.

Add Time to Current Total (+).

Subtract Time from Current Total (-).

2) Enter a New Total Time for the Month.

Enter the New Total Time.

Current Time Logged: 8:06:00 - Edit Time: (h:mm:ss) 0:15:00 = New Total: 7:51:00

Reset Cancel Change Time

With this dialog you can edit the logged time for the CURRENT month. You can Add to, Subtract from, or Overwrite the current logged time by selecting the appropriate option button.

In the example above, the Subtract option is selected, so 15 minutes is subtracted from 8:06:00 to leave 7:51:00. If you were to select the Add option button, the New Total will change to 8:21:00, or if you select the Enter New Time option, the New Total will change to 0:15:00.

When the New Total displays your intended value, select the **Change Time** button.

# Registering via SWREG

As well as mailing a check/money order, you can also Register Easy Uploads via the CompuServe **SWREG** Service. However, note that since CompuServe's MINIMUM on SWREG is \$10, the Registration fee for Easy Cost Timer on SWREG is **\$10.00**.

**To Register Easy Cost Timer via SWREG:**

Log-on to CompuServe

Then "GO" to "SWREG" (GO SWREG)

Give Easy Cost Timers Registration ID# when requested: [7699](#)

Follow the remaining instructions on-screen.

I will E-mail you your Easy Cost Timer Registration Code, as soon as SWREG notifies me of your order.

Copyright 1995, by P. Scott Antony

# Easy Cost Timer Version Notes

You are reading this topic for one of three reasons:

- 1). You chose to, from the Contents topic.
- 2). It has come up automatically because you're a New User.
- 3). You've just Upgraded Easy Cost Timer.

Easy Cost Timer will display this topic each time you upgrade the software, to tell you what's new!

The date shown with each Version indicates the dates of the EXE/HLP files included with that version. The time of EXE/HLP files indicates the version number, such that for version 1.3, the EXE/HLP files are time/date stamped as: ETIMER.EXE 9/25/95 1:30am.

New features are only described once. If you're new to Easy Cost Timer, please read the complete topic for better understanding of all of the features.

---

## Version 1.4 9/29/95 (Current Version - \*\*\* Upgraders and New Users - Please Read \*\*\*)



Added a Free Time Monitor. ECT now displays your % of Free Time Remaining, and determines a "glide-path" for using exactly your number of Free Hours, and no more!



Added a Display Daily Average/Overtime item to the Defaults dialog. This displays the "glide-path" on the Timer, for easy reference.



Added a Reset Timer... item to the Options menu. You can also right-click on the Start/Stop button to Reset the timer.

### **Maintenance:**

Fixed problem for International users who were using a time separator other than the colon, or decimal separator other than the period. **Sorry World!**

---

## Version 1.3 9/25/95

**NEW** Added a Defaults dialog with three new options, and moved the Auto-Start, On Top, etc. menu items to the dialog as check boxes. New to this dialog are: Give Up Control..., Log Title Bar Changes, and Billing Cycle.

**NEW** Added a Edit Time dialog to allow you to easily Add to, Subtract from, or Overwrite the current logged time for the month.

**NEW** Added two menu items to the File menu to Open or Clear the new Log File option.

**NEW** ECT can now be registered via SWREG on CompuServe!

**NEW** ECT now reads from your WIN.INI file for the proper Time separator (defined in the International applet of Control Panel). **FYI:** Foreign users were having trouble with a "Bad GraphicCell Index" error if they used a separator other than the colon, which this feature now solves. This will not affect US users.

### **Maintenance:**

Changed the **AutoWait** feature to read from the Command Line *instead* of from the INI file. **This option will no longer be read from the INI file!** See Hints/Tips/Troubleshooting.



---

**Version 1.2**    **9/15/95**

**NEW** Added an Auto-Start feature which will start/stop the timer automatically when ECT detects the COM port opening or closing.

**NEW** Added a Compare Plans item to the Options menu. ECT will compare the two CIS pricing plans on a "Year to Date" basis.

**NEW** Added code to make ECT remember its position on screen, and start there the next time it's opened. It will also remember if it was an icon, and will start minimized as well if that's the way you left it when you last exited.

**Maintenance:**

None

---

**Version 1.1**    **9/6/95**

Original release.

CompuServe, WinCIM, CSNav, and Navigator are Copyrights of CompuServe Inc.

Copyright 1995, by P. Scott Antony

**E**  
ETIMER.INI

## **ETIMER.INI**

ECT keeps information about your sessions in an INI file called ETIMER.INI. It's located in same directory where you installed the Timer (C:\CSERVE\ETIMER\ETIMER.INI if you chose the default installation). The best way to edit and INI file is with Windows Notepad program.



