

Program Information



Klik-A-Dir is little program that will allow you to explore your harddisk,harddisks if you have several,cdroms or floppies in a fashion that closely resembles the workings of the START-button. It will allow you to execute **any** command on **any** directory ,*folder*, with only two Kliks of your mouse. *Klik-A-Dir* will optionally show the programs in those directories; allowing you to start **any** program with two Kliks. Furthermore the program offers many options to be customized to your liking.

[Help Index](#)

[Disclaimer](#)

Help Index

Program Information

Klik-A-Dir Basics:

Basic Working
Showing Programs in the Menus
Showing/Hiding Klik-A-Dir

New: Drag&Drop your files:

Copying or Moving Dropped Files

Modifying Klik-A-Dir:

Adding Command Buttons
Changing Command Buttons

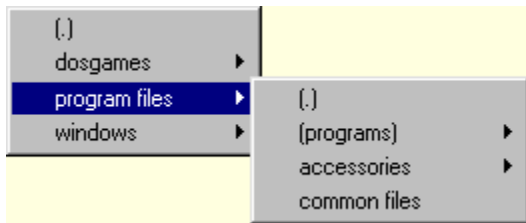
Adding Directory Buttons
Changing Directory Buttons

Removing Buttons
Changing The Order Of The Buttons

Options:

Keeping Changes You Made

Basic Working



1) Select a command you want to execute by pressing the button with the appropriate name on the top of the window.

Note: If you let your mouse hover over a button for a little while, the actual command that will be executed, will appear in a little balloon.

2) Select the directory button where you would like to start your search and click.


Again if you let your mouse hover over the button for a little while, the actual directory that will be the starting directory will appear in a little balloon.

3) In the menu that appears, select the target directory or the directory that contains the target directory. Directories that contain subdirectories have a little arrow to the right of them.

4) Repeat step 3 until you have found your target directory.

5) Point to this directory and *Klik*. The selected command will now be executed.

If you have chosen to Show Programs you can alternatively Klik a program. The program will be started.

 [Back to Index Page](#)

Hiding/Showing Klik-A-Dir

Clicking with the left mouse-button on the *Klik-A-Dir* icon in the Systemtray (the little box near the clock on the taskbar) will hide *Klik-A-Dir*, or when it is already hidden it will make it reappear.

Alternatively you can use the right mouse-button on the *Klik-A-Dir* window or the *Klik-A-Dir* icon and select **Hide** or **Show**.

You can also hide Klik-A-Dir by double clicking on the (vertical) titlebar.

When you select **Enable Hotkey** from *settings* on the right-click menu you can always make *Klik-A-Dir* appear by pressing **Ctrl+Shift+K**.

 [Back to Index Page](#)

Adding Command Buttons

Add commands by clicking the window with the right-mouse-button and selecting **Add Command**. Then select one of the predefined commands.


Explore
Open
RootExplore
Dos Prompt

Cut Dir
Copy Dir
Paste Dir
Remove Dir

Search In Dir
Path->Clipbrd

Add your own commands by clicking the window with the right-mouse-button and selecting **Add Command** and next selecting **other...** or alternatively by pressing **Ctrl + C**. A new command button will appear, called [new]. As it is now, nothing will happen, when this command is selected.

To learn how to change the settings of this new command button see: [Changing Command Buttons](#)

 [Back to Index Page](#)

Adding Directory Buttons


Add a directory button by clicking the window with the right-mouse-button and selecting **Add Directory**. Then select one of the predefined directories.

My Computer
Start Menu
My Documents
Favorites
Windows

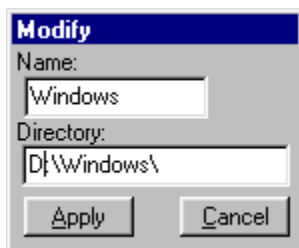
Recent Dirs

Add your own directories by clicking the window with the right-mouse-button and selecting **Add Directory** and next selecting **other...** or alternatively by pressing **Ctrl + D**. A new Directory button will appear, called [new]. As it is now, nothing will happen, when this button is selected.

To learn how to change the settings of the button see: [Changing Directory Buttons](#)

 [Back to Index Page](#)

Changing Command Buttons




Right-click the button that you want to change and select **Modify**.

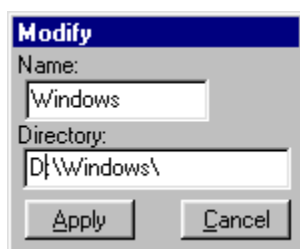
In the textboxes that appear type the name and the command. You can also drag and drop a program on the modify window; Klik-A-Dir will fill in the command and name for you.

Press the **Apply** button, to make the change. Select **Cancel** to cancel the modification.

Hint: It is possible to choose *any* button and select **Apply Here** in the right-click menu. That way you can use one button as a template for a new button. For example select **Modify** on the Prompt button and change 'cd' in 'dir /p' in the command textbox. Change the name into 'Dir'. Next press **Apply Here** on a new button. Selecting **Cancel Modify** will hide the textboxes and not change anything.

 [Back to Index Page](#)

Changing Directory Buttons




Right-click the button that you want to change and select **Modify**.

In the textboxes that appear type the name and the directory. Alternatively drop a folder on the textboxes; Klik-A-Dir will fill in the blanks for you.

Press the **A**pply button, to make the change. Select **C**ancel to cancel the modification.


Hint: It is possible to choose *any* button and select **A**pply Here in the right-click menu. That way you can use one button as a template for a new button. For example select **M**odify on the windows button and add 'system\' to the text in the Directory textbox. Change the name into 'System'. Next press **A**pply Here on a new button. Selecting **C**ancel **M**odify will hide the textboxes and not change anything.

 [Back to Index Page](#)

Remove Buttons

Right-click on a button and select **Remove** to remove the button.

Hint: Removing all buttons and saving the settings will restore the default settings that were installed when you first ran the application. They will be active next time you run *Klik-A-Dir*.

 [Back to Index Page](#)

Changing the Order of the Buttons

Select **Button Order** from the Right-click menu , the *Change Order* form will appear.

Now select the name of the button that you would like to move and press **Up** up to move it up or **Down** to move it down in the list.

Select **Ok** when you are satisfied.

 [Back to Index Page](#)

Showing Programs

If you right click the main window and select **Settings -> Show Programs**, *Klik-A-Dir* will show all you directories in the cascading-menus, but it will also show your programs. By clicking on a program it will be started.

If a directory contains other directories and programs, the programs will show in a separate menu called: (*programs*).

Note: The command-buttons do not influence the way a program is executed.

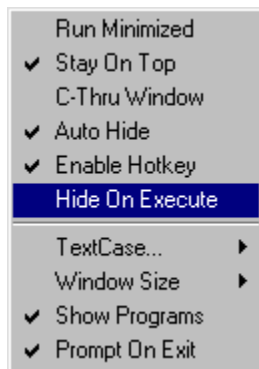
 [Back to Index Page](#)

Settings and Saving Changes

You can keep the changes that you have made; added buttons, button order or changed buttons, by right-clicking the window and selecting **Save Settings**.


When you close *Klik-A-Dir*, after the layout of *Klik-A-Dir* has changed you will be prompted, whether or not you want to keep the changes. If you unselect **Prompt On Exit**, you will not be prompted.

Some things will automatically be saved even if you choose *not* to save the changes you've made; those are.



- And:

Position of the *Klik-A-Dir* Window.
The last selected Command.


 [Back to Index Page](#)

Copying/Moving Dropped Files

You can drag files from explorer onto Klik-A-Dir to copy or move them to a new directory. Just select the files you want and drag them onto *Klik-A-Dir*. Two special Command Buttons will automatically appear. Select the *Copy Files* to copy or the *Move Files* button to move them. Now browse to the directory where you would like to copy or move your files and **Klik**.

Notes:

- If you press the Control Key while dropping files, the files will be added to any existing list of files. This list will exist when you dropped files earlier and have not yet copied or moved them.
- For reasons of safety copy and move will only succeed when the copied file(s) do not already exist. If a file with the same name already exists in the selected directory, the copy/move of this file will be cancelled.
- You can press the right-mouse button on the special Command Buttons to see a list of the dropped files or to clear the list.

 [Back to Index Page](#)

Choosing the Text-case

When you right-click on the *Klik-A-Dir* window and choose **TextCase** you can determine how the directories, and subdirectories, will appear. Choose:

lowercase:

When you want the directories to show as small characters only.
Like *lowercase* and *start menu*

UPPERCASE:


When you want the directories to consist of capital characters only.
Like *UPPERCASE* and *START MENU*

Namelike:

When you want the directories to appear like names with the first letter a capital, the others small.
Like *Namelike* and *Start menu*

AsIs:

When you want the directories to be exactly like they were created.
Like *AsIs* and *Start Menu*

 [Back to Index Page](#)

The name that will appear on the button,arbitrary.

The command that will be executed.
Extensions are not necessary.
Can be exe,com,bat,pif.
Also include the path,switches as necessary.
Examples: *explorer /e*, and *c:\norton\ncd.exe*

The directory that will be the start of your search.
The slash (\) at the end is optional. So
c:\windows\system and *c:\windows\system* are equivalent

Showing two panes; like Explorer.

Showing only the content of a directory.

Like explore only starting in the selected folder. Also called Explore from Here.

Giving you a dos prompt in the chosen directory.

First choosing **Cut Dir** and then **Paste Dir** will move the directory. If you don't paste nothing will happen. When you have chosen a folder to cut the titlebar will show this. Letting your mouse hover over an empty spot of *Klik-A-Dir* will show the full path.

First choosing **Copy Dir** and then **Paste Dir** will copy the directory. When you have chosen a folder to copy the titlebar will show this. Letting your mouse hover over an empty spot of *Klik-A-Dir* will show the full path.

After you have done a **Copy Dir** or a **Cut Dir** you can select **Paste Dir** to copy or move the first selected directory to another directory.

Choosing this will move the directory you will select to the Recycle Bin. When you hold a shiftkey while clicking the directory you want removed, you will **really remove** the directory without moving it to the Recycle Bin first.

Use this command on a directory and the find window will appear with **path** of the chosen directory already filled in for you.

When using this command the **full path** of the chosen directory will be copied onto the Clipboard. Very usefull when opening documents from inside some applications. Some applications never start in the right folder after selecting File|Open. To fix this paste the **full path** where you can type the Filename and press Return; you'll be right where you want to be.

If this is checked *Klik-A-Dir* will always be on top of all other windows.

Determines how the commands will be executed:
Default,Maximized or Minimized.

If this is checked and you save the changes, next time you start the program it will appear only as an icon in the systemtray.

When used this button will start with showing all your hard-drives and all the drives you select in the **Settings My Computer**.

Starts in your **Start Menu** directory.

This will start in the folder on your computer known as **My Documents**.

This will start in the folder on your computer known as **Favorites**.

Starts in your **Windows** directory

This will show you a list of all selected directories during this session.

This determines whether Klik-A-Dir appears as a normal window or has a somewhat fancier look.

This software is provided 'AS IS' and the author makes NO WARRANTY or representation, either express or implied, with respect to the software, its quality, accuracy or fitness for a particular purpose.

HonySoft makes no charge for this version of Klik-A-Dir and you are free to redistribute the complete unmodified package. It is a violation of this agreement to distribute Klik-A-Dir or any part of it except as the complete unmodified package.

This software is Copyright © 1997 HonySoft.

This is a directory containing subdirectories, point your mouse to this to make them appear.

This is the current directory, in this case **Program Files**. Klik on this to execute the command on the **Program Files**-directory.

In this menu you will find all programs in the the current directory, in this case **Program Files**.Select this to see them.

A directory without subdirectories.

Those are command buttons. They determine what command will be executed. To learn more about them, see:

[Adding Command Buttons](#) or [Changing Command Buttons](#).

The selected command that will be executed on the directory you Klik.

Executable files with extensions: *exe,com,bat,pif* or *lnk*.

The directory buttons. Klik on them to start heading for a folder. To add or change the directory buttons see:
[Adding Directory Buttons](#) and [Changing Directory Buttons](#).

Use the Hotkey (Ctrl+Shift+K) to quickly show *Klik-A-Dir*. See also : [Showing/Hiding Klik-A-Dir](#).

If this option is enabled *Klik-A-Dir* will shrink to the size of the vertical titlebar when it is not being used. This option is practical if you want *Klik-A-Dir* to be always visible but not using much screen space.

With this option enabled *Klik-A-Dir* will minimize to the tray when a command is executed. Some special commands will execute without minimizing *Klik-A-Dir*. See also : [Commands Buttons](#).

Apply button. Press to keep the changes made.

Cancel button, will cancel any changes.

This is the vertical titlebar. You can move *Klik-A-Dir* by dragging it and hide *Klik-A-Dir* by double clicking it.

