

OpenOffice.org 1.0

Setup Guide

Contents

- 1. OpenOffice.org Setup Guide 5**
 - Icons in the Documentation 5

- 2. The OpenOffice.org Installation 7**
 - Installation Types 7
 - General Installation Tips 9
 - System Requirements 9
 - Preparing the Installation 11

- 3. Single-User Installation 13**
 - Installation Requirements 13
 - Starting the Installation 14
 - The Setup Procedure 15
 - Welcome 15
 - Important Information 16
 - License Agreement 17
 - User Data 18
 - Type of Installation 19
 - Component Selection 20
 - Installation Directory 21
 - Concluding the Installation Options 22

Assigning File Types	23
Java™ Runtime Environment	24
Copying the Files	25
Concluding the Installation	26
Starting OpenOffice.org	27
4. Multi-User or Network Installation	29
Installation Phase 1	29
Installation Requirements	29
Starting the Installation	30
The Setup Procedure	31
Workstation Installation	40
Installation Requirements	40
Starting the Installation	40
The Setup Procedure	41
Starting OpenOffice.org	52
5. Appendix	53
Automated Installation under Unix	53
Setting up Printer, Fax and Fonts under Unix	54
Setting up Printers	54
Using Fax Functionality	57
Connecting a PostScript for PDF Converter	58
Installing Fonts	59
Installing a patch under the Solaris™ Operating Environment	62
Modifying the OpenOffice.org Installation	63
Modify	63
Repair	64
Remove	64
Setup Parameters	65

OpenOffice.org Setup Guide

Icons in the Documentation

There are three icons used to call your attention to additional helpful information.



The "Important!" icon points out important information regarding data and system security.



The "Note" icon points out extra information: for example, alternative ways to reach a certain goal.



The "Tip" icon points out tips for working with the program in a more efficient manner.

The OpenOffice.org Installation

Installation Types

This chapter gives you general information on the different types of installation, the prerequisites for installation and the installation process. Information on how to modify an existing OpenOffice.org installation can be found in the Appendix under Modifying the OpenOffice.org Installation on page 62.

The following table explains the different types of installation and when they are applicable.

Installation Type	Usage
Single-User Installation	OpenOffice.org is installed on one computer for a single specific user only (NOT recommended for Unix/ Linux).
Multi-User or Network Installation	OpenOffice.org is installed for multiple users on a computer or installed on a network computer for collective use. This installation consists of two phases, in the first phase (typically done by root or admin) all shared components are installed on a single computer, and the second phase, a Workstation Installation in which user specific files and configurations are installed.



The **Single-User Installation** is most suited for use with single-user operating systems and should typically NOT be used for Unix.



A simple installation script that helps to simplify the process of installation is available for Unix users.

Examples of its use:

```
./install                # do a multi-user installation into /usr/local
./install --prefix=/opt  # do a multi-user installation into /opt
```

Type `./install --help` for syntax and see *Automated Installation under Unix* in the Appendix on page 53.



In the Appendix, we describe how the **OpenOffice.org Printer Administration Utility `spadmin`** for **Unix** is used to set up printers, faxes and fonts for OpenOffice.org.

General Installation Tips

System Requirements

General System Requirements

- 250 MB available hard-disk space
- Graphics capabilities of at least 800 x 600 resolution and 256 colors



Special System Requirements for the Solaris™ Operating Environment on the SPARC™ Platform

- Operating Environment Solaris 7 or 8 (for support of Asian languages, Solaris 8 is recommended)
- Solaris 8 requires patches 108434-01 and 108435-01 (64 bit)
- For the support of Asian languages, the additional patch 108773-12 is required for Solaris 8.
- Solaris 7 requires patches 106327-08, 106300-09 (64 bit)
- XServer (with at least 800x600, 256 colors) with window manager (e.g. OpenWindows™, CDE, GNOME)
- 128 MB RAM

Patches for the Solaris Operating Environment can be found at <http://sunsolve.sun.com>.



Special System Requirements for the Solaris™ Operating Environment on the Intel Platform

- PC with Pentium or compatible processor
 - Operating Environment Solaris 7 or 8 (for support of Asian languages, Solaris 8 is recommended)
 - Solaris 8 requires patch 108436-01
 - For the support of Asian languages, the additional patch 108774-12 is required for Solaris 8.
 - Solaris 7 requires patches 106328-08
 - XServer (with at least 800x600, 256 colors) with window manager (e.g. OpenWindows™, CDE, GNOME)
 - 64 MB RAM
 - Patches for the Solaris Operating Environment can be found at <http://sunsolve.sun.com>.
-



Special System Requirements for Linux (x86 and PPC)

- PC with Pentium or compatible processor, or PowerPC processor
 - Linux Kernel 2.2.13 or higher
 - XServer (with at least 800x600, 256 colors) with window manager (e.g. GNOME)
 - 64 MB RAM
 - Installed glibc2 version 2.1.3 or higher (glibc2 version 2.2.1 or higher for PPC Linux)
-



Special System Requirements for Windows

- Windows 95 or higher. For the support of Asian languages, Windows 98 or higher is required. (Windows 2000 is recommended)
 - PC with Pentium or compatible processor
 - 64 MB RAM
-

Preparing the Installation

- Expand the compressed installation file for your operating system into a temporary directory of your choice. This will create a subdirectory called **installer** containing all files of the installation set and the setup routine.

You can find important installation tips in the files: `readme.txt` (Windows) or `README` (Solaris and Linux) in the installation directory. We strongly recommend that you read these files because they may contain information that only became available after this guide was printed.



The installation process can be stopped at any time by clicking the **Cancel** button. You will then not be able to run OpenOffice.org. You can have the installation directory automatically removed after you cancel the installation. Please note, however, that in that case **all files and subfolders contained therein** will also be removed.



For **Windows NT / 2000** and for **Win9x** versions which have been setup for multi-user operation: In these versions the `sversion.ini` file will not be written into the Windows directory but rather into the user data directory set up for each user (for example, in `C:\Documents and Settings\Username\Application Data`).



There is a special installation script called `install` available to help automate the installation procedure under Unix which is described in detail in *Automated Installation under Unix* in the Appendix on page 53.

Single-User Installation

The single-user installation is what you use to set up OpenOffice.org on one computer for one specific user only.

When installing OpenOffice.org as a single-user installation, log in to the system as that single specific user and install OpenOffice.org in any directory of your choice to which you have full access rights.



This type of installation should typically NOT be used on Unix / Linux systems.

Since Unix systems are rarely ever restricted to a single specific user, using the supplied `install` script or using the Multi-User / Network installation method is strongly recommended.

Installation Requirements

The directory into which OpenOffice.org is to be installed should have approximately 190 to 250 MB of free space, depending on the installation options you select. You will also need up to 40 MB of additional space for temporary files during installation. After successful completion of the installation, the temporary files will be automatically deleted.

Starting the Installation



If you have already installed a previous version of OpenOffice.org, you should first check to see if this file exists:

- `.sversionrc` file in your **Unix** home directory or
- `sversion.ini` file in the **Windows** user directory.

This file contains the path and version number of an already installed OpenOffice.org. If the version number is identical to the version number of the OpenOffice.org to be installed, you must deinstall the old OpenOffice.org version before you can install the new one.

- If necessary, log in to the system with your user name. You do not need any system administrator rights for a single-user installation.
-



- Under **Unix**, go to the graphical X Window interface if it was not already automatically activated.
 - Go to the directory where the installation files reside – either by command line in a terminal window or through the File Manager.
 - Start the installation script with the command
`./setup`
-



- Under **Windows**, you can use the Windows Explorer to run the OpenOffice.org setup program. To start the setup program with a parameter, open the Start menu on the Windows Start bar, select the **Run...** command and enter the following line in the text box (you can also use the **Browse** button to find the file and to correctly enter the path in the text box):

```
X:\{tempdir}\install\setup.exe -parameter
```

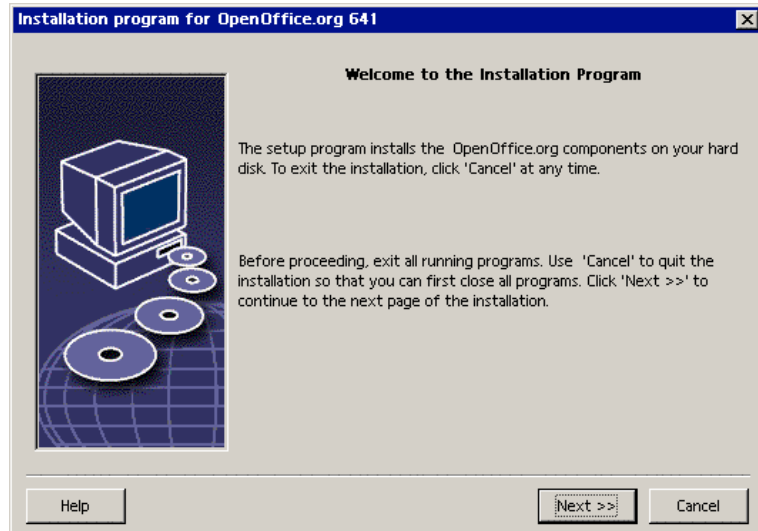
where X:\{tempdir} is the temporary directory where the installation files reside after decompressing the downloaded installation file.

To run the single-user installation, you do not have to give the setup program parameters. More information on setup parameters can be found in the Appendix.

The Setup Procedure

Welcome

The first thing to appear on the screen is a welcome dialog.

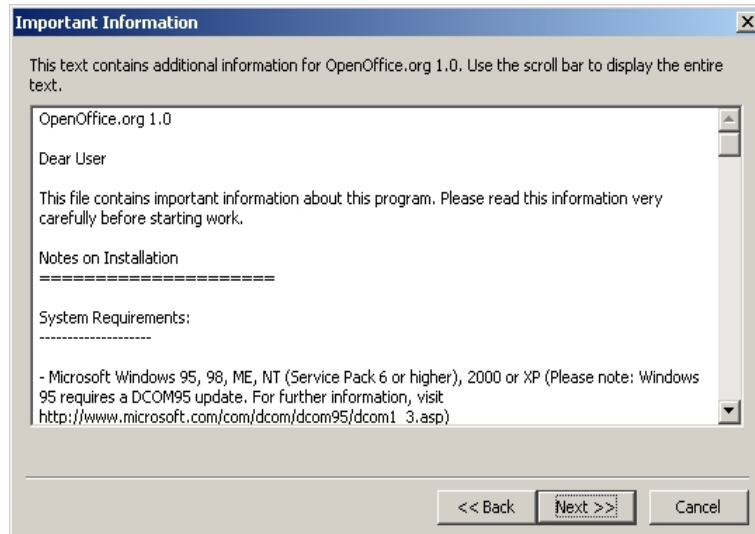


In many of the setup program dialogs you will see a **Help** button which displays brief information about the current dialog. After you have read the Help text, use the **Back** button to return to the setup program. Do NOT close the Help with the "X" system button (top right) as this would exit the setup program.

- Confirm the Welcome dialog by clicking the **Next** button.

Important Information

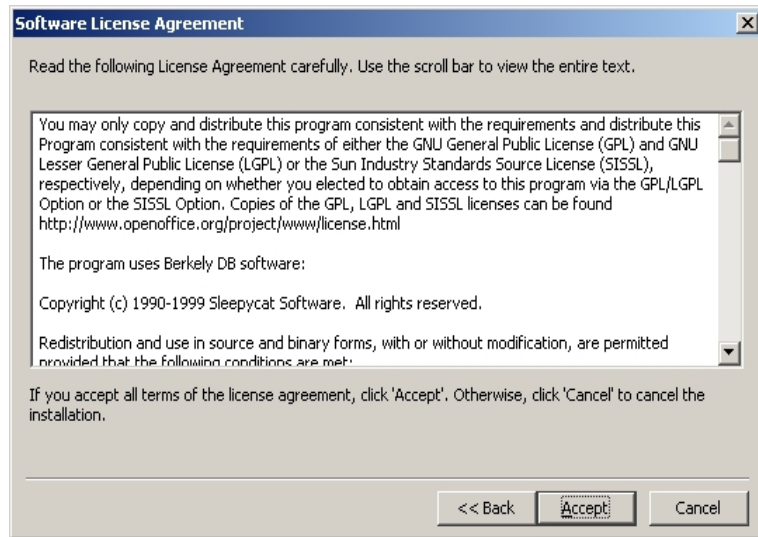
Now a window appears containing the `readme.txt` file (Windows) or `README` file (Solaris and Linux). This file can also be opened and read from the OpenOffice.org directory after the installation process is completed.



- Read the information and confirm by clicking **Next**.

License Agreement

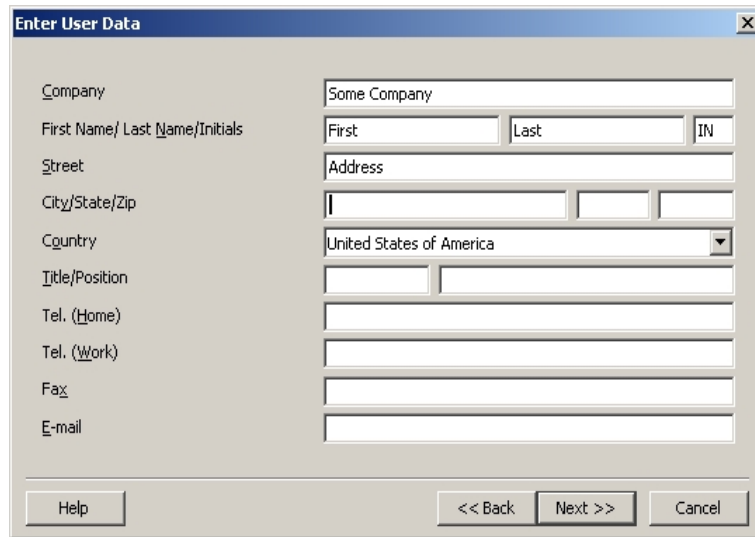
The next dialog contains the license agreement.



- Carefully read the license agreement. If you agree to all points, click **Accept** to continue with the installation. If you do not agree to the license agreement click **Cancel**. In the latter case OpenOffice.org will not be installed.

User Data

You will now see the **Enter User Data** dialog.



Company	Some Company
First Name/ Last Name/Initials	First Last IN
Street	Address
City/State/Zip	
Country	United States of America
Title/Position	
Tel. (Home)	
Tel. (Work)	
Fax	
E-mail	

- Enter your personal data.

The data entered here will be used in fields in OpenOffice.org, for example, to automatically insert your data into the corresponding fields in letter and fax templates.

You can also access this dialog later by choosing **Tools - Options - OpenOffice.org - User Data**.

- Click **Next** to continue the installation.

Type of Installation

The next dialog in the OpenOffice.org setup program allows you to select the type of installation to be carried out.

The memory requirements shown here are approximates based on the cluster sizes of the next target directory containing sufficient free space.



We recommend the **Standard Installation** for most users. This generally means that all of the components will be installed together with a selection of filters. If you select this option you will only be prompted to specify the directory in which OpenOffice.org is to be installed.

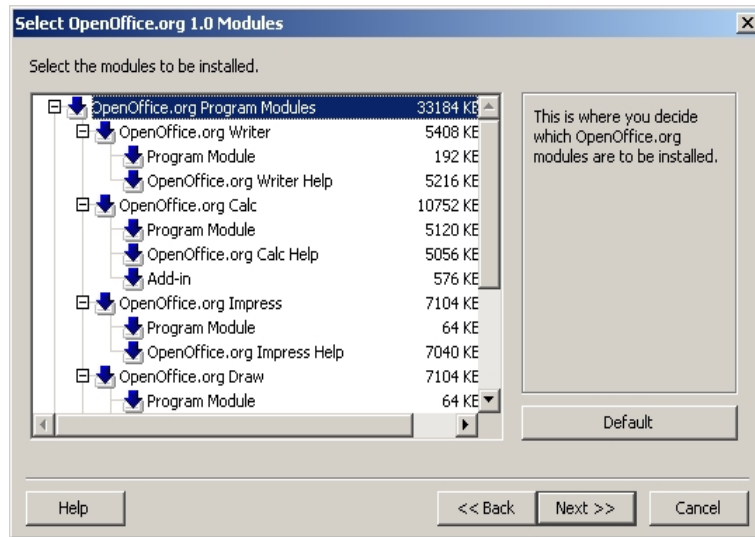
In the **Custom Installation** you also first see a dialog for selecting the installation directory. Then, in the subsequent dialog, you select the individual components to be installed.

The **Minimum installation** will only install those components that are required to run OpenOffice.org. If this is chosen the Help files will not be installed nor will the majority of the samples and templates. After choosing this option you will only be required to enter the name of the directory in which OpenOffice.org is to be installed.

- Select the type of installation suitable to your needs.
- Click **Next** to continue the installation.

Component Selection

If you have selected the **Custom Installation** you will now see a dialog for selecting the components to be installed.



As a rule, all of the components which have a colored box next to their name will be installed. If you do not want to install a particular component, click the box next to the name and it will change to gray. Each time you click one of the boxes, it will change from colored to gray or vice versa, and the corresponding component and all subordinate components will either be part of the installation (colored) or not part of the installation (gray).

When you click the plus sign next to the name of a component, a list of the subordinate components will be revealed. Again, clicking the individual boxes will either include the components in or exclude them from the installation. If a group entry contains components to be installed as well as components excluded from installation, the box in front of the group entry will appear semi-transparent. For example, the box in front of the OpenOffice.org Writer text filters is by default semi-transparent because the default setting does not include all filters.

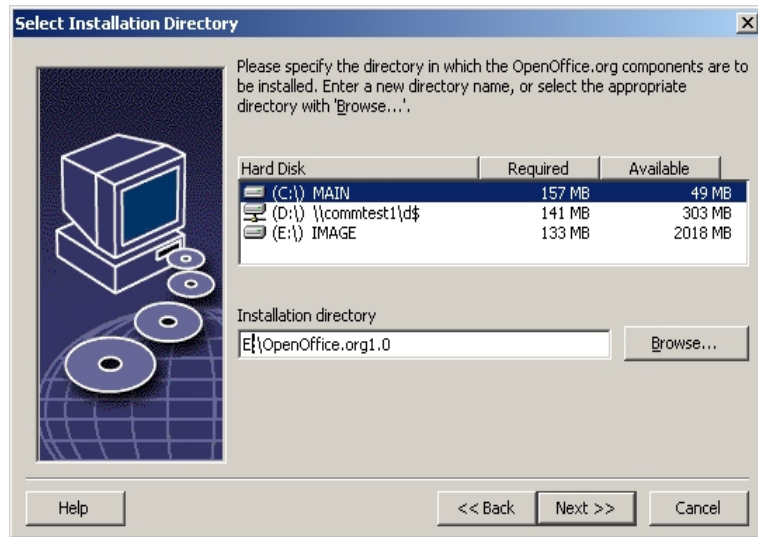
You can use the **Default** button, to restore the settings that were originally shown when the dialog was opened for the first time.

Entries shown in red denote that these components will be installed no matter what and that they cannot be deselected.

- Select the modules and components you want to include in the installation.
- Click **Next** to continue the installation.

Installation Directory

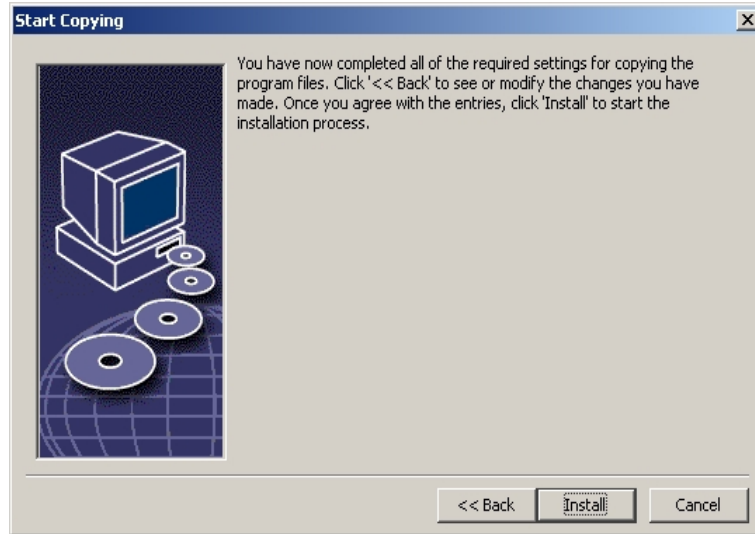
The next dialog to appear is for selecting the installation directory.



In the top part of the dialog, there is a list of the drives on your system with details regarding how much space is required and how much space is available. The amount of memory required can differ due to different drives and cluster sizes.

- You can also select the installation path from a selection dialog by clicking **Browse** or by directly entering the path in the text box. If the directory entered does not exist, you will be asked if it should be created. OpenOffice.org will install files and other subfolders with files in the directory you specify.
- Click **Next** to continue the installation.

Concluding the Installation Options

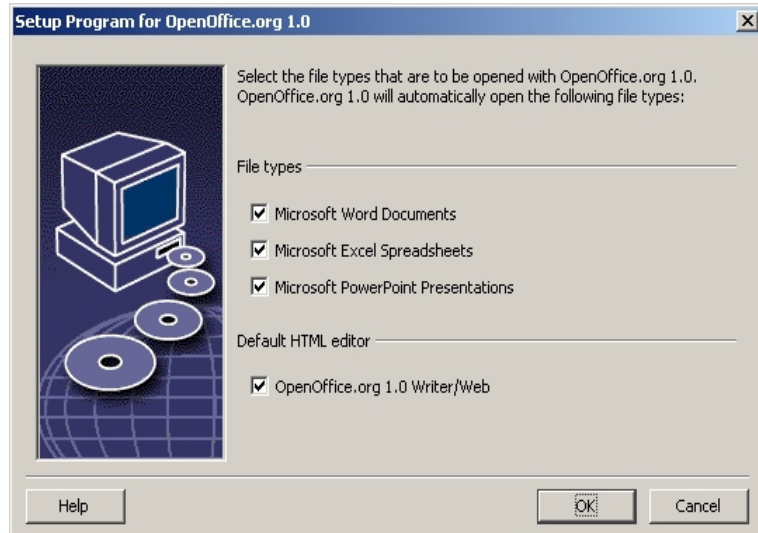


A dialog will inform you that all of the details needed to copy the program files have been entered.

- Click **Install** to continue the installation.

Assigning File Types

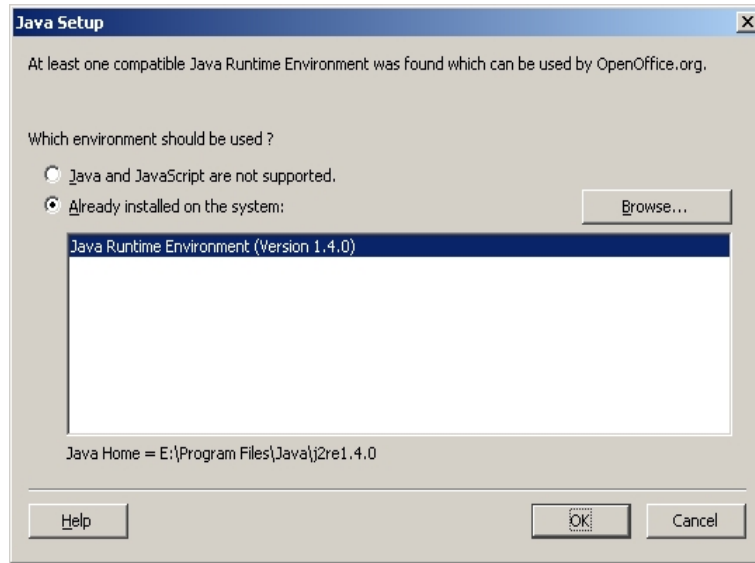
In the following dialog, select which **additional** file types are to be opened with OpenOffice.org. OpenOffice.org will be registered in the operating system as the default program for these file types.



- Select the **file types** that OpenOffice.org is to open in addition to its own file types.
- To use OpenOffice.org as default editor for HTML files (Web pages), mark the check box under **Default HTML Editor**. This setting only applies to editing HTML files. They will be opened with your browser (e.g. Netscape).
- Click **OK**.

Java™ Runtime Environment

The next dialog to appear lists the Java Runtime Environment versions registered in your system.



In this dialog, select the Java Runtime Environment you want to use. You require version 1.3.1 or higher. If you have already installed a newer version than 1.3.1, you do not have to install the version provided as long as OpenOffice.org identifies your version as **verified**.

- Select the preferred option and click **OK**.

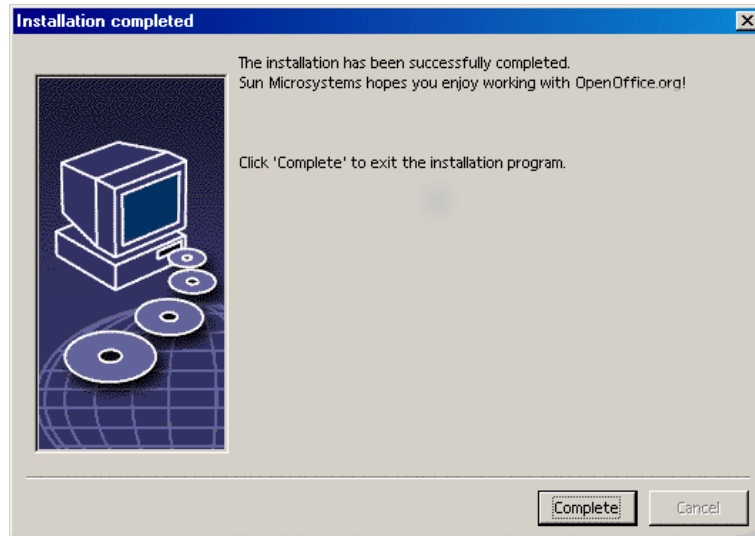
Copying the Files



On screen, you will see how the installation is progressing and approximately how much time is left till the installation is complete.

Concluding the Installation

After the process of copying and registering the files is finished, you will see the final dialog.



- Click **Complete** to finish the installation.

Starting OpenOffice.org



To start OpenOffice.org under **Unix**, go to the OpenOffice.org1.0/program directory, or to the local OpenOffice.org directory in your home directory, and start OpenOffice.org with the command

```
./soffice
```

You can also place the OpenOffice.org1.0/program directory into the path for programs under **Unix**. You will then be able to start OpenOffice.org by using the command "soffice" in any directory. To set up the default printer, call the Printer Administration Utility **spadmin**, which is described in the Appendix.

After completing the installation process under the **Solaris Operating Environment**, you should log out and log in again to update the CDE integration.



Under **Windows** in the Start menu under programs / OpenOffice.org 1.0, you will now find menu entries for starting the various OpenOffice.org components that have been installed.

During the OpenOffice.org installation, a link is created in the autostart folder of the **Windows** Start menu. This link leads to the OpenOffice.org Quickstarter, which is available in the system tray after you restart your system.

Right-click the Quickstarter icon to activate a context menu from which you can start various OpenOffice.org components.

Detailed information on Quickstarter functionality can be found in the Help under the word "Quickstart".

Multi-User or Network Installation

Installation Phase 1

The multi-user / network installation of OpenOffice.org is carried out in two phases. First, login as root or system administrator or as a normal user with corresponding system access rights on the target computer or network computer. Carry out the complete OpenOffice.org installation in a directory to which the users have read and execute access rights. Second, after the **Phase 1** is complete, each user can log in to the system and perform a **Workstation Installation** of OpenOffice.org in a folder in his or her home directory.

To start up the Phase 1 installation, simply Invoke the setup program from the installation directory and add the parameter **-net**.



The **Phase 1** installation does not result in an OpenOffice.org version that can be run directly (even by root or the system administrator). Thus, if required, the root or the system administrator also has to carry out a workstation installation.

Installation Requirements

About 250 MB of space needs to be available on the target machine directory which is to contain the OpenOffice.org installation. During the installation about 20 MB space is required for temporary files. The temporary files will be automatically deleted after the installation has been completed successfully. Under Unix you will need a swap volume of about 80 MB.

Starting the Installation



- Log in to the system as system administrator or root
-

- Go to the graphical X Window interface if it was not already automatically activated.
- Go to the installation directory either by command line in a terminal window or through the File Manager.
- Call the installation script with the command

```
./setup -net
```

As an alternative, Unix users may use the `install` script from the command line to perform a non-graphical installation.

Type

```
./install --help
```

for its syntax or see *Automated Installation under Unix* in the Appendix for more information.



- Call the Setup.exe program from the installation directory using the **-net** parameter.

To start the setup program by using a parameter, open the Start menu on the Start bar, select the **Run...** command and enter the following line in the text box (you can also use the **Browse** button to find the file and to correctly enter the path in the text box):

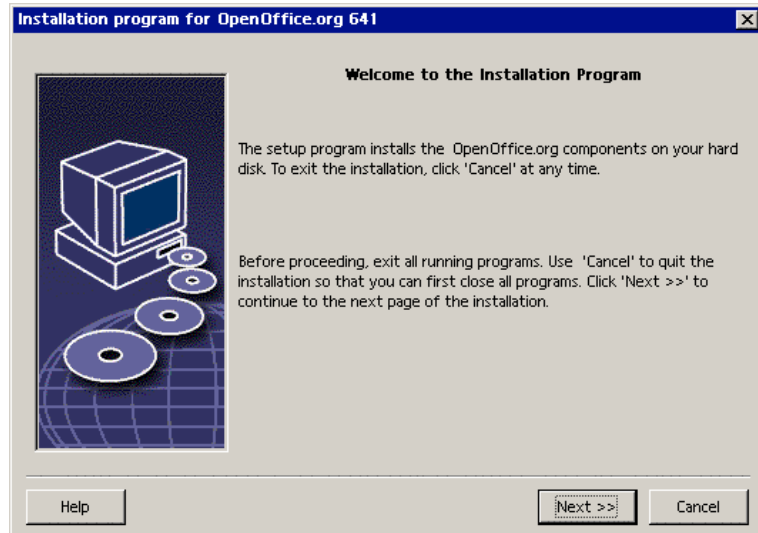
```
X:\{tempdir}\install\setup.exe -net
```

where X:\{tempdir} is the temporary installation directory where the installation files reside after decompressing the downloaded installation file.

The Setup Procedure

Welcome

The first thing to appear on the screen is a welcome dialog.

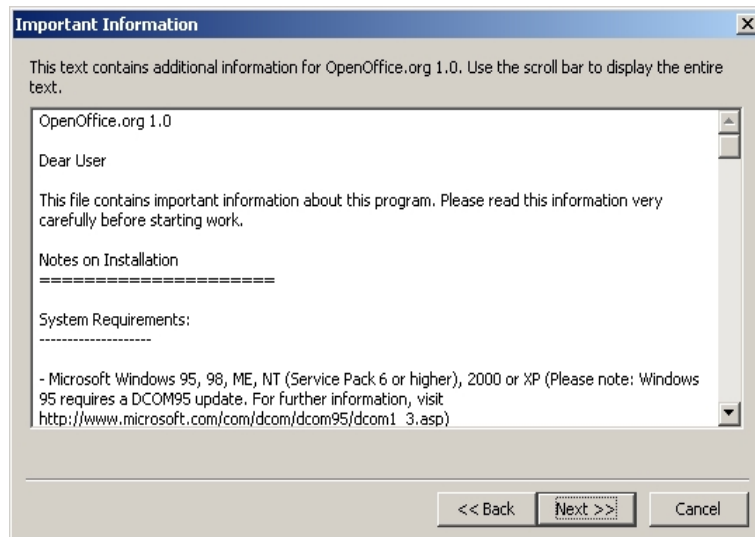


In many of the setup program dialogs you will see a **Help** button which displays brief information about the current dialog. After you have read the Help text, use the **Back** button to return to the setup program. Do **NOT** close the Help with the "X" system button (top right) as this would exit the setup program.

- Confirm the Welcome dialog by clicking the **Next** button.

Important Information

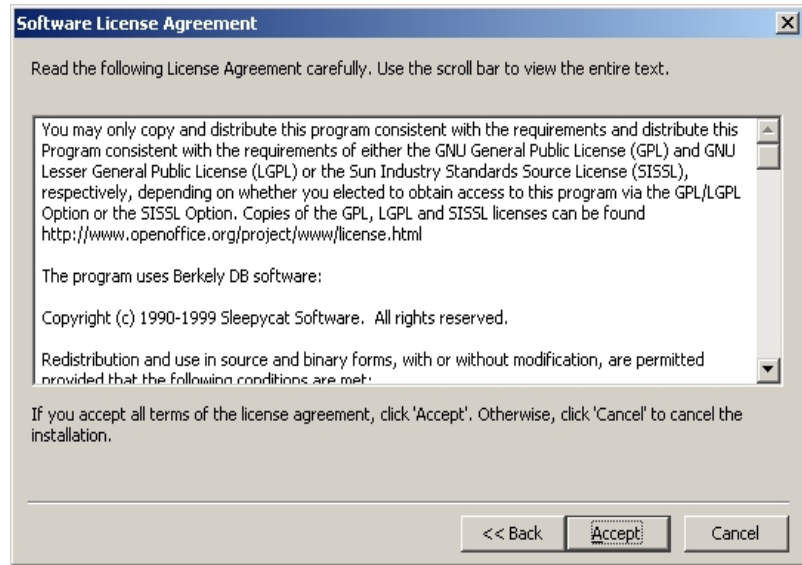
Now a window appears containing the `readme.txt` file (Windows) or `README` file (Solaris and Linux). This file can also be opened and read from the `OpenOffice.org` directory after the installation process is completed.



- Read the information and confirm by clicking **Next**.

License Agreement

The next dialog contains the license agreement.

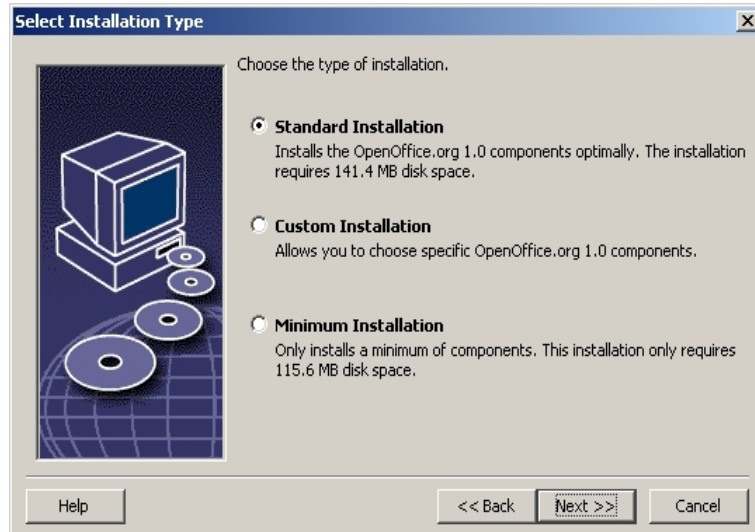


- Carefully read the license agreement. If you agree to all points, click **Accept** to continue with the installation. If you do not agree to the license agreement click **Cancel**. In the latter case OpenOffice.org will not be installed.

Type of Installation

The next dialog in the OpenOffice.org setup program allows you to select the type of installation to be carried out.

The memory requirements shown here are approximates based on the cluster sizes of the next target directory containing sufficient free space.

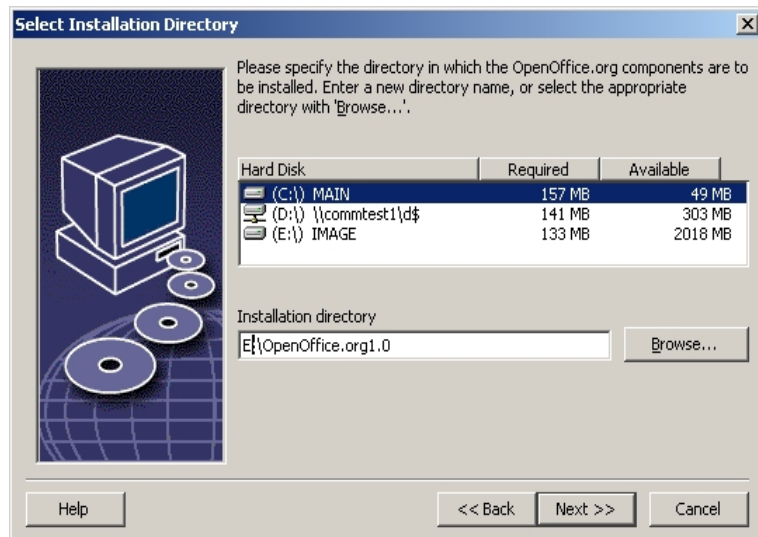


When installing OpenOffice.org on a network server you should install all of the available components. To do this select the **Custom Installation** and select all of the options contained in the dialog following on from the next one in which a directory is chosen.

- Select **Custom Installation**.
- Click **Next** to continue the installation.

Installation Directory

The next dialog to appear is for selecting the installation directory.



In the top part of the dialog, there is a list of the drives on your system with details regarding how much space is required and how much space is available. The amount of memory required can differ due to different drives and cluster sizes.

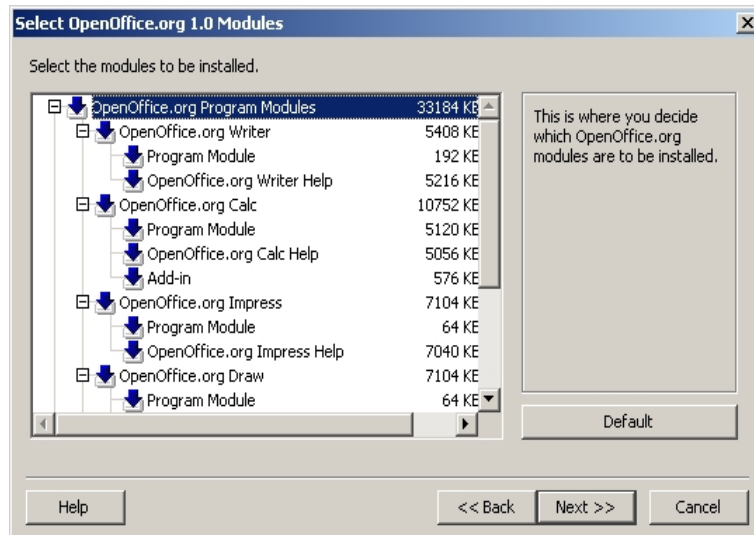
- You can also select the installation path from a selection dialog by clicking **Browse** or by directly entering the path in the text box. If the directory entered does not exist, you will be asked if it should be created. OpenOffice.org will install files and other subfolders with files in the directory you specify.
- Click **Next** to continue the installation.



Select a directory in which all users have read and execute rights so that the workstation installations can be carried out.

Component Selection

If you have selected the **Custom Installation** you will now see a dialog for selecting the components to be installed.



As a rule, all of the components which have a colored box next to their name will be installed. If you do not want to install a particular component, click the box next to the name and it will change to gray. Each time you click one of the boxes, it will change from colored to gray or vice versa, and the corresponding component and all subordinate components will either be part of the installation (colored) or not part of the installation (gray).

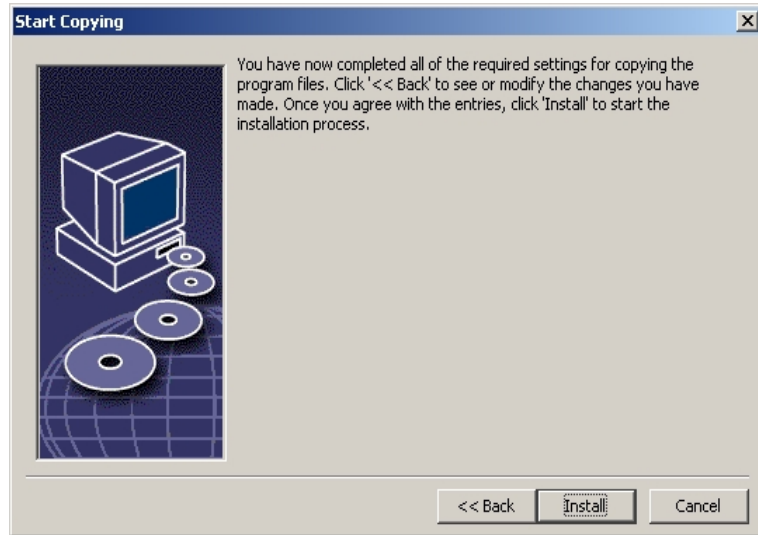
When you click the plus sign next to the name of a component, a list of the subordinate components will be revealed. Again, clicking the individual boxes will either include the components in or exclude them from the installation. If a group entry contains components to be installed as well as components excluded from installation, the box in front of the group entry will appear semi-transparent. For example, the box in front of the OpenOffice.org Writer text filters is by default semi-transparent because the default setting does not include all filters.

You can use the **Default** button, to restore the settings that were originally shown when the dialog was opened for the first time.

Entries shown in red denote that these components will be installed no matter what and that they cannot be deselected.

- Select the modules and components you want to include in the installation.
- Click **Next** to continue the installation.

Concluding the Installation Options



A dialog will inform you that all of the details needed to copy the program files have been entered.

- Click **Install** to continue the installation.

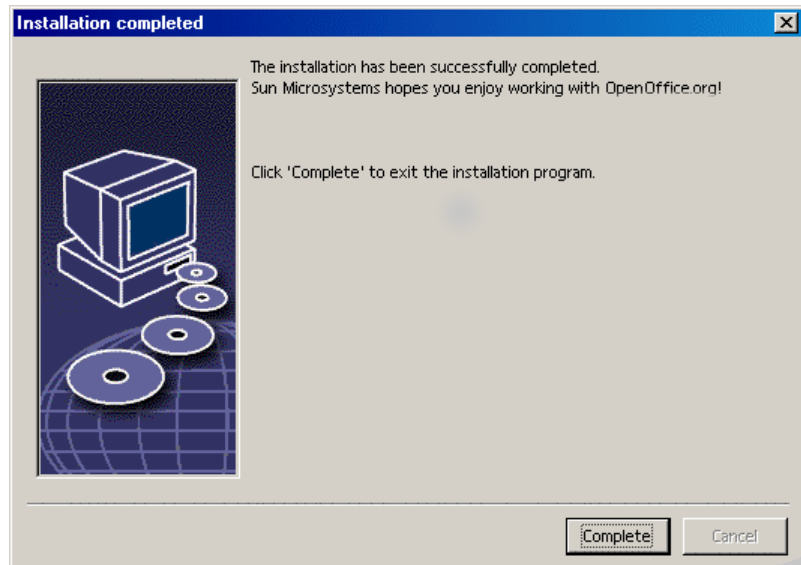
Copying the Files



On screen, you will see how the installation is progressing and approximately how much time is left till the installation is complete.

Concluding the Installation

After the process of copying and registering the files is finished, you will see the final dialog.



- Click **Complete** to finish the installation.

Now, with the aid of the **workstation installation**, each user can install OpenOffice.org in his or her Home directory or local hard disk.



As system administrator, you can also call the printer administration utility **spadmin** in order to, among other things, define printer settings for the individual user installations and to install fonts. You can find more details on **spadmin** in the Appendix.

Workstation Installation

Every user can carry out a user installation under his or her login name by calling the setup program from the installation made in Phase 1.

Installation Requirements

About 2 to 4 MB of free space is required on the hard disk where OpenOffice.org is to be installed.

Starting the Installation

Before the workstation installation can be initiated, a Phase 1 installation must have been carried out successfully as described under *Installation Phase 1* on page 29.



If you have already installed a previous version of OpenOffice.org, you should first check to see if this file exists:

- `.sversionrc` file in your **Unix** home directory or
- `sversion.ini` file in the **Windows** user directory.

This file contains the path and version number of an already installed OpenOffice.org. If the version number is identical to the version number of the OpenOffice.org to be installed, you must deinstall the old OpenOffice.org version before you can install the new one.

- Log in to the system with your user name.
-



- Go to the graphical X Window interface.
- Open a terminal window and use the command line to go to the network installation path on the server and then to the program sub-directory. If the server installation was made in the directory `/opt/OpenOffice.org1.0`, this could be done using the command:

```
cd /opt/OpenOffice.org1.0/program
```

- Start the installation script with the command
`./setup`
-



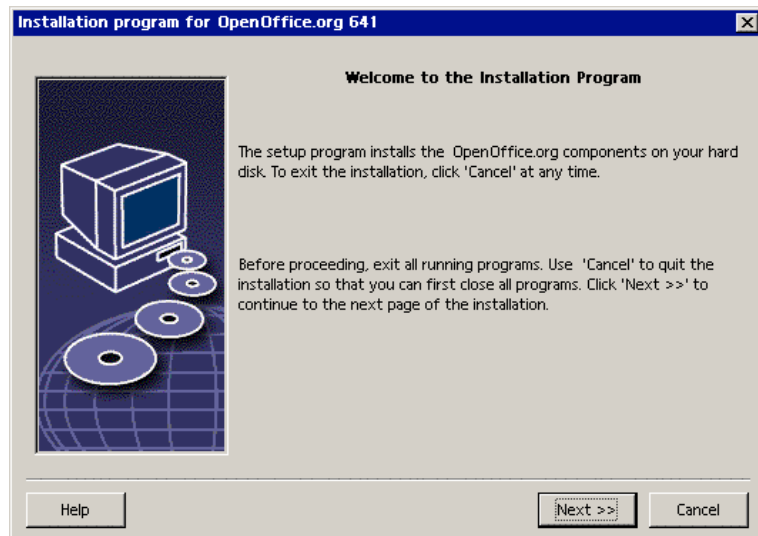
-
- Run the Setup.exe program located in the network installation directory on the server.

When working under Windows you can use the Windows Explorer to call up the setup program.

The Setup Procedure

Welcome

The first thing to appear on the screen is a welcome dialog.

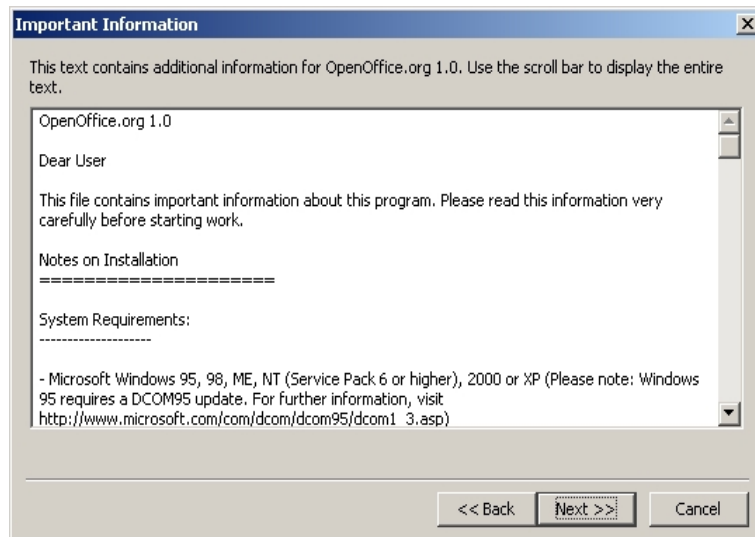


In many of the setup program dialogs you will see a **Help** button which displays brief information about the current dialog. After you have read the Help text, use the **Back** button to return to the setup program. Do NOT close the Help with the "X" system button (top right) as this would exit the setup program.

- Confirm the Welcome dialog by clicking the **Next** button.

Important Information

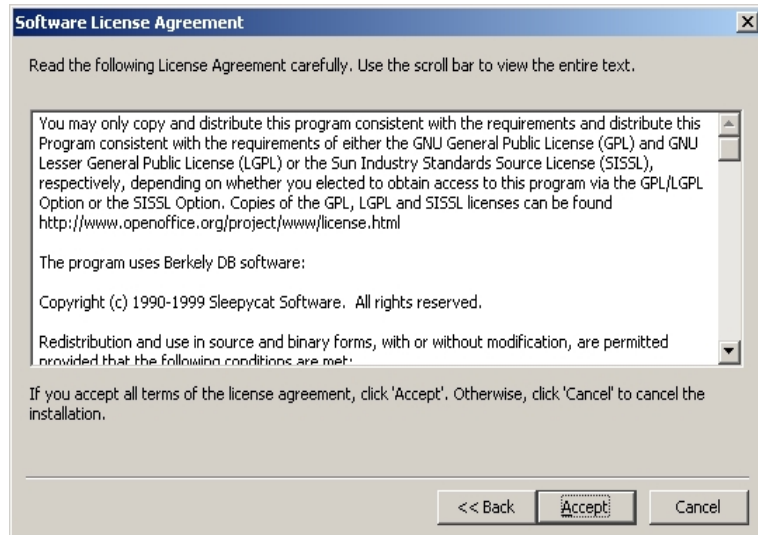
Now a window appears containing the `readme.txt` file (Windows) or `README` file (Solaris and Linux). This file can also be opened and read from the `OpenOffice.org` directory after the installation process is completed.



- Read the information and confirm by clicking **Next**.

License Agreement

The next dialog contains the license agreement.



- Carefully read the license agreement. If you agree to all points, click **Accept** to continue with the installation. If you do not agree to the license agreement click **Cancel**. In the latter case OpenOffice.org will not be installed.

User Data

You will now see the **Enter User Data** dialog.

The screenshot shows the 'Enter User Data' dialog box with the following fields and values:

Company	Some Company
First Name/ Last Name/Initials	First Last IN
Street	Address
City/State/Zip	
Country	United States of America
Title/Position	
Tel. (Home)	
Tel. (Work)	
Fax	
E-mail	

Buttons at the bottom: Help, << Back, Next >>, Cancel

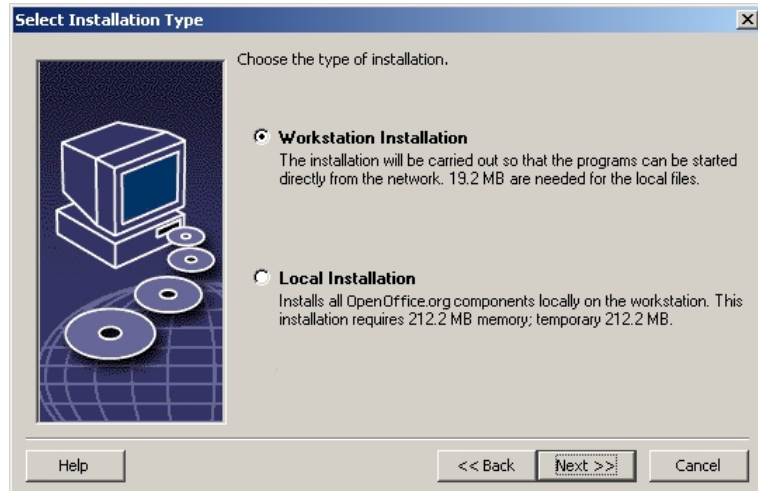
- Enter your personal data.

The data entered here will be used in fields in OpenOffice.org, for example, to automatically insert your data into the corresponding fields in letter and fax templates.

You can also access this dialog later by choosing **Tools - Options - OpenOffice.org - User Data**.

- Click **Next** to continue the installation.

Type of Installation



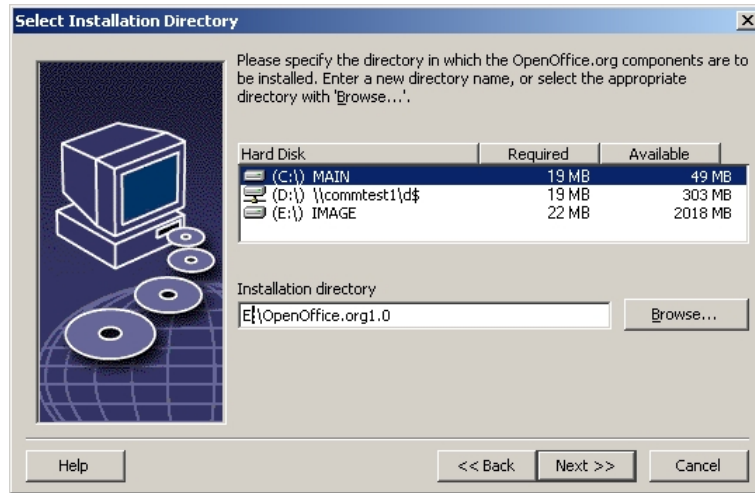
- Select the **Workstation Installation** as your user installation. Only the files that contain variable data for a user will be installed.

The **Local Installation** option installs a complete OpenOffice.org locally. The server installation serves as the source.

- Click **Next** to continue the installation.

Installation Directory

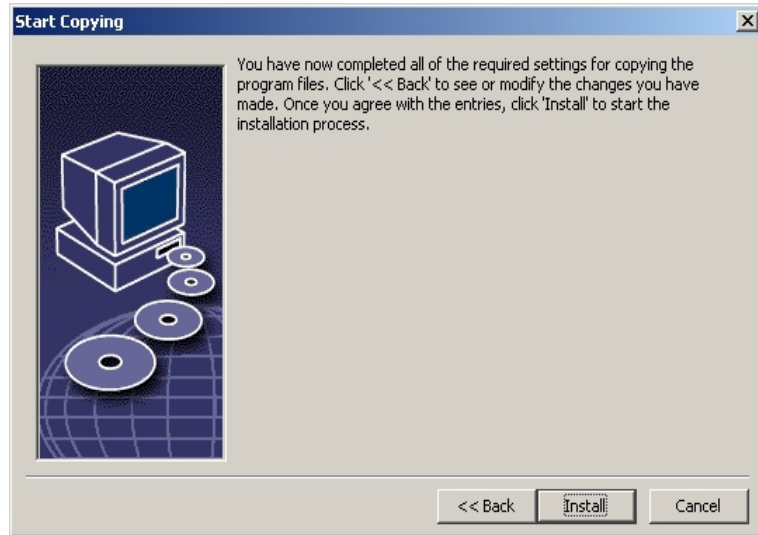
The next dialog to appear is for selecting the installation directory.



In the top part of the dialog, there is a list of the drives on your system with details regarding how much space is required and how much space is available. The amount of memory required can differ due to different drives and cluster sizes.

- You can also select the installation path from a selection dialog by clicking **Browse** or by directly entering the path in the text box. If the directory entered does not exist, you will be asked if it should be created. OpenOffice.org will install files and other subfolders with files in the directory you specify.
- Click **Next** to continue the installation.

Concluding the Installation Options

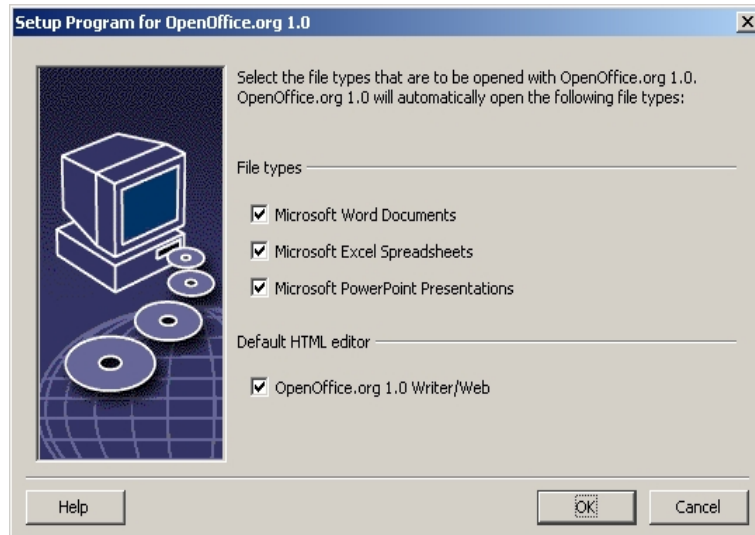


A dialog will inform you that all of the details needed to copy the program files have been entered.

- Click **Install** to continue the installation.

Assigning File Types

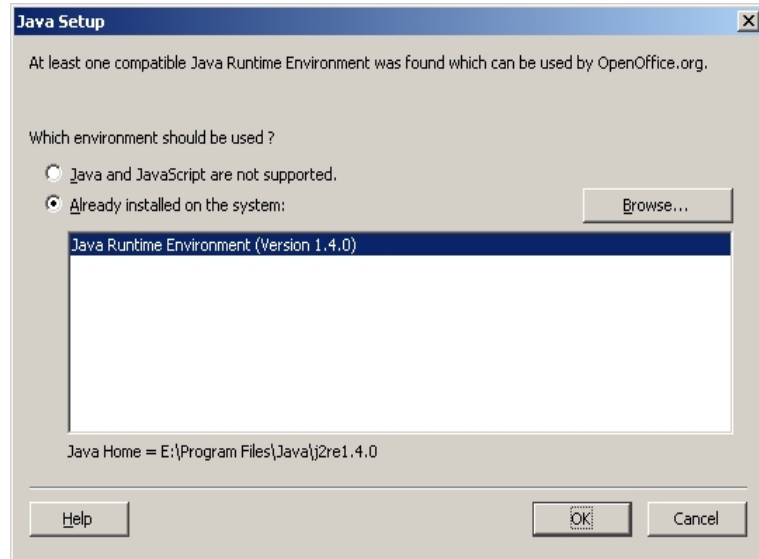
In the following dialog, select which **additional** file types are to be opened with OpenOffice.org. OpenOffice.org will be registered in the operating system as the default program for these file types.



- Select the **file types** that OpenOffice.org is to open in addition to its own file types.
- To use OpenOffice.org as default editor for HTML files (Web pages), mark the check box under **Default HTML Editor**. This setting only applies to editing HTML files. They will be opened with your browser (e.g. Netscape).
- Click **OK**.

Java™ Runtime Environment

The next dialog to appear lists the Java Runtime Environment versions registered in your system.



In this dialog, select the Java Runtime Environment you want to use. You require version 1.3.1 or higher. If you have already installed a newer version than 1.3.1, you do not have to install the version provided as long as OpenOffice.org identifies your version as **verified**.

- Select the preferred option and click **OK**.

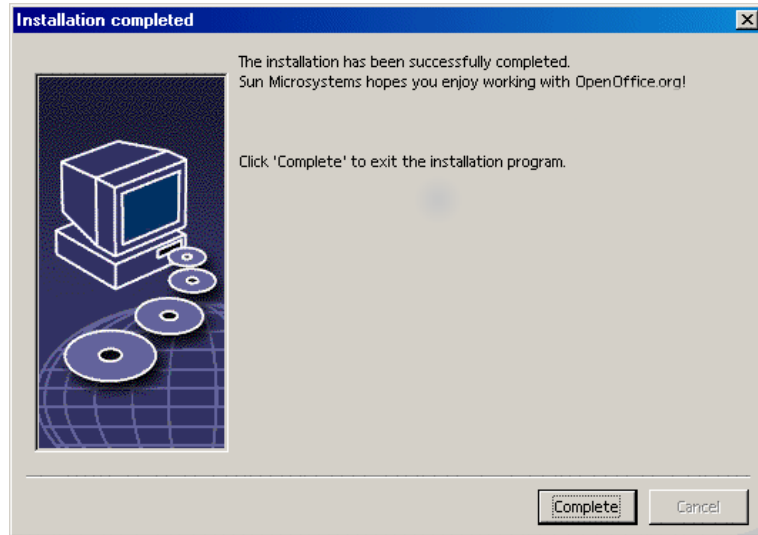
Copying the Files



On screen, you will see how the installation is progressing and approximately how much time is left till the installation is complete.

Concluding the Installation

After the process of copying and registering the files is finished, you will see the final dialog.



- Click **Complete** to finish the installation.

Starting OpenOffice.org



Under **Windows** in the Start menu under programs / OpenOffice.org 1.0, you will now find menu entries for starting the various OpenOffice.org components that have been installed.

During the OpenOffice.org installation, a link is created in the autostart folder of the **Windows** Start menu. This link leads to the OpenOffice.org Quickstarter, which is available in the system tray after you restart your system.

Right-click the Quickstarter icon to activate a context menu from which you can start various OpenOffice.org components.

Detailed information on Quickstarter functionality can be found in the Help under the word "Quickstart".



To start OpenOffice.org under **Unix**, go to the OpenOffice.org1.0/program directory, or to the local OpenOffice.org directory in your home directory, and start OpenOffice.org with the command

```
./soffice
```

You can also place the OpenOffice.org1.0/program directory into the path for programs under **Unix**. You will then be able to start OpenOffice.org by using the command "soffice" in any directory. To set up the default printer, call the Printer Administration Utility **spadmin**, which is described in the Appendix.

After completing the installation process under the **Solaris Operating Environment**, you should log out and log in again to update the CDE integration.

Appendix

The Appendix contains information about automated installation of OpenOffice.org under Unix, the printer administration program under the Solaris operating environment and under Linux, about modifying and repairing the installation as well as deinstalling OpenOffice.org.

Automated Installation under Unix

There is a special installation script available to help automate the installation of OpenOffice.org under Unix which can be used to install OpenOffice.org on the command line with or without graphical interface.

The installation script `install` defaults to a multi-user installation of OpenOffice.org (standard for Unix / Linux) and takes the following command line arguments:

<code>--help</code>	prints the help message
<code>--version</code>	prints the version of OpenOffice.org to be installed
<code>--prefix=PREFIX</code>	installs OpenOffice.org into PREFIX (default is <code>\$oo_default_prefix</code>)
<code>--single</code>	performs a single user installation of OpenOffice.org (default is a network installation)
<code>--interactive</code>	installs OpenOffice.org using the interactive mode

Example

```
./install --prefix=/opt
```

makes a multi-user / network Phase 1 installation of OpenOffice.org into the directory `/opt`.



Individual users must still do a **Workstation Installation** before they will be able to use OpenOffice.org. However, the Workstation Installation will be **automatically started** the first time any user tries to run OpenOffice.org.

Setting up Printer, Fax and Fonts under Unix

Under Unix, the printer administration program "spadmin" is provided to help you set up printers, faxes and fonts for use with OpenOffice.org.

Call the printer administration program "spadmin" as follows:

- Go to the `OpenOffice.org1.0/program` directory.
- Enter:

```
./spadmin
```

After it starts, the window of the printer administration program "spadmin" appears. That is where you can make all important settings.

During a network installation, the **System Administrator** first logs on as user root and calls the printer administration program "spadmin". He or she then creates a general printer configuration file called

`OpenOffice.org1.0/share/psprint/psprint.conf` for all users. All changes are immediately available to all users in OpenOffice.org.

The system administrator can also add fonts for all users in the network installation. However, these fonts are available only after restarting OpenOffice.org.

Setting up Printers

Under Unix, OpenOffice.org only offers direct support for PostScript printers. Other printers must be set up as described in the section **Printer Drivers in OpenOffice.org**. OpenOffice.org automatically provides a printer with the default driver for each system queue. You can add additional printers as needed.

Adding a Printer

1. Click the **New Printer** button.
2. Select the **Create Printer** option and click **Next**.

3. Select the appropriate driver for your printer. If you are not using a PostScript printer or your model is not listed, use the "Generic Printer" driver or follow the steps below. You can also add new drivers using the **Import** button or delete unnecessary drivers using the **Delete** button (see below for details). Click **Next**.
4. Choose a command line that you can use to print on your printer (for example, `lp -d my_queue`). Click **Next**.
5. Give the printer a name and determine whether it should become the default printer. Click **Finish**.
6. To print a test page, click on **Test Page**. If the test page fails to print or is incorrectly printed, check all settings as described in **Change Printer Settings**.

You now have a new printer in OpenOffice.org.

Printer Drivers in OpenOffice.org

- When installing a non-PostScript enabled printer, you must set your system so that PostScript can be converted into the language of the printer. We recommend using current PostScript conversion software such as Ghostscript (<http://www.cs.wisc.edu/~ghost/>). You should set up the "Generic Printer" in that case. Make sure the page margins are set correctly as well. You can find this information in the following sections.
- If you are in possession of a PostScript-enabled printer, you must always install a description file that adapts the printer (PostScript Printer Definition - PPD) so that you can utilize the paper tray selection, the duplex print function (if the printer has it) and any built-in fonts. You can also use the generic printer driver since it contains the most important data and is suitable for most printers. In that case, you will have to do without the paper tray selection and correctly set the page margins.

Some PPD files are installed as default files. If there is no matching PPD file for your printer, you will find various PPD files at <http://www.adobe.com/products/printerdrivers/>. You can also ask the manufacturer of your printer for PPD files. Unpack a suitable driver and connect it with `spadmin` to your system.

Drivers can be imported or deleted when creating a new printer.

- To import new drivers, click **Import** in the driver selection dialog. Click **Browse** to select the directory where you unpacked the PPD files. In the **Selection of drivers** list box, select the printer driver you want to install and then click **OK**.

- To delete a printer driver, select the printer driver and click **Delete**. Be sure that you do not delete the generic printer driver, and remember that drivers deleted from network installations are no longer available to other users who are using the same network installation.
- If the printer has more fonts built in than the usual PostScript fonts, you must also load the AFM files for these additional fonts. Copy the AFM files into the `OpenOffice.org1.0/share/psprint/fontmetric` directory of the OpenOffice.org installation or into the `OpenOffice.org1.0/user/psprint/fontmetric` directory of the User Installation. You can find AFM files, for example, at `ftp://ftp.adobe.com/pub/adobe/type/win/all/afmfiles/`.

Changing Printer Settings

In the printer administration program "spadmin", select the printer from the **Installed printers** list box and click **Properties**. The **Properties** dialog appears containing several tab pages. This is where you can make settings that are used according to the PPD file of the selected printer.

- Select the command on the **Command** tab page. You can remove superfluous commands using the **Remove** button.
- On the **Paper** tab page, you can define the paper format and paper tray to be used as the default settings for this printer.
- On the **Device** tab page, you can activate the special options for your printer. If your printer can only print in black and white, choose "grayscale" under **Color**, otherwise choose "color". If switching to grayscale leads to unfavorable results, you can also select "color" under **Color** and see how the printer or PostScript emulator applies it. Furthermore, on this tab page you can set the precision with which colors are described as well as the PostScript level.
- The **Font Replacement** tab page allows you to select a printer font type available in the printer for each font type installed on your computer. This way you can reduce the data volume sent to the printer. Font replacement can be turned on or off for each printer individually.
- You should also set the page margins correctly on the **Additional settings** tab when using the generic printer drivers so that your printout is not cropped. You can also enter a description in the Comments field, which will also be displayed on the **Print** dialog.

Some of these settings can also be set per document/printout in the **Print** dialog or the **Printer Settings** dialog in OpenOffice.org via the **Properties** button.

Renaming or Deleting Printers

- Select a printer from the **Installed printers** list box.
- To rename the selected printer, click **Rename**. Enter an appropriate name in the dialog that appears and click **OK**. The name must be unique and should be chosen so that you can recognize the printer and the application. Printer names must be assigned the same for all users because, when documents are exchanged, the selected printer remains unchanged if the recipient has it under the same name.
- To delete the selected printer, click **Remove**. The default printer or a printer that has been created by the system administrator in a network installation cannot be removed using this dialog.

Selecting a Default Printer

- To make the printer selected from the **Installed printers** list box the default printer, double-click its name or click the **Default** button.

Using Fax Functionality

If you have already installed a fax package such as Efax or HylaFax on your computer, you can send faxes with OpenOffice.org.

1. Click **New Printer**. This opens the **Add Printer** dialog.
2. Select **Connect a fax device**. Click **Next**.
3. Choose whether to use the default driver or another printer driver. Click **Next**. If you are not using the default driver, select the appropriate driver and click **Next**.
4. Enter a command line with which to communicate with the fax in the following dialog. In the command line of each fax sent "(TMP)" is replaced by a temporary file and "(PHONE)" by the telephone number of the recipient fax machine. If "(TMP)" occurs in the command line, the PostScript code is transmitted in a file, otherwise via standard input (i.e., as a pipe). Click **Next**.
5. Assign a name to your new fax printer and determine whether the telephone numbers (see below) marked in the text should be removed from the printout, or not. Click **Finish**.

You can now send faxes by printing to the printer that has just been created.

Enter the fax number as text in the document. You can also enter a field that takes the fax number from your active database. In any case, the fax number must start with the characters @@# and end with @@. A valid entry would have the form @@#1234567@@.

If these characters including the telephone number are not printed, activate the **Fax number is removed from the printout** option under **Properties** on the **Command** tab page. If no telephone number is entered in the document, a dialog prompting you for it will appear after the printout.

In OpenOffice.org you can also activate a button for sending faxes to a default fax. To do this, right-click the function bar, open the **Visible Buttons** submenu and click the **Send Default Fax** button. You can set which fax is used when this button is pressed under **Tools - Options - Text Document - Print**.

Remember to create one separate print job for each fax, otherwise, the first recipient would receive all the faxes. In the **File - Form Letter** dialog select the **Printer** option and then the **Create Individual Print Jobs** field.

Connecting a PostScript for PDF Converter

If a PostScript for PDF converter such as Ghostscript or Adobe Acrobat Distiller(tm) is installed on your computer, you can quickly create PDF documents in OpenOffice.org.

1. Click **New Printer**. This opens the **Add Printer** dialog.
2. Select **Connect a PDF converter**. Click **Next**.
3. Choose whether to use the default driver, the Acrobat Distiller driver or another driver. Click **Next**. If you are not using the default driver or the Acrobat Distiller driver, select the appropriate driver and click **Next**.
4. In the next dialog, enter a command line with which to communicate with the PostScript->PDF Converter. Moreover, enter the directory where the PDF files created should be saved. If you do not provide this directory, the user's home directory will be used. In the command line of each created PDF document "(TMP)" is replaced by a temporary file and "(OUTFILE)" by the target file, the name of which is created from the document name. If "(TMP)" occurs in the command line, the Postscript code is transmitted in a file, otherwise via standard input (i.e., as a pipe). If Ghostscript or Adobe Acrobat Distiller is in the search path, you can use one of the predefined command lines. Click **Next**.
5. Assign a name to your new PDF converter. Click **Finish**.

You can now create PDF documents by printing to the converter that has just been created.

Installing Fonts

When you are working with OpenOffice.org you might notice that a different number of fonts is provided depending on the document type being used. This is because not all of the fonts can be used in every case.

- Therefore, only those fonts will be shown in the font selection box when working with a text document which can also be printed, as it is assumed that you will only want to use those fonts that you can actually have printed on paper.
- In an HTML document or in online layout, only fonts that are available on screen are offered.
- On the other hand, when working with spreadsheets and drawings you will be able to use all of the fonts that can be either printed or shown on the screen.

OpenOffice.org tries to have the display on screen correspond to the printout (WYSIWYG). Possible problems using the font are shown in the bottom margin of the dialog you open by choosing **Format – Character**.

Adding Fonts

You can integrate additional fonts in OpenOffice.org. Fonts which you integrate are available exclusively to OpenOffice.org and can be used with various Xservers without your having to install them there. To make the fonts available to other programs as well, proceed as usual by adding the fonts to your Xserver. OpenOffice.org can display and print out PostScript Type1 fonts as well as TrueType fonts (including TrueType Collections).

To integrate additional fonts in OpenOffice.org, proceed as follows:

1. Start **spadmin**.
2. Click **Fonts**.
3. All fonts added for OpenOffice.org are listed in the dialog that appears. You can remove selected fonts using the **Remove** button or add new fonts with the **Add** button.
4. Click **Add**. The **Add Fonts** dialog appears.
5. Enter the directory from which you want to add the fonts. Press the ... button and select the directory from the path selection dialog or enter the directory directly.
6. Now a list of the fonts from this directory appears. Select the fonts you want to add. To add all the fonts, click **Select All**.

7. With the **Create soft links only** check box you can determine whether the fonts are to be copied into the OpenOffice.org directory or only symbolic links are to be created there. If the fonts to be added are on a data medium that is not always available (such as a CD-ROM), you must copy the fonts.
8. Click **OK**. The fonts will now be added.

In the case of a network installation, the fonts are installed in that installation if possible. If the user has no write access rights, the fonts will be installed in the user installation so that only the user who installed them can access them.

Deleting Fonts

To delete fonts, proceed as follows:

1. Start spadmin.
2. Click **Fonts**.
3. All fonts added to OpenOffice.org are listed in the dialog that now appears. Select the fonts you want to delete and click **Delete**.

You can delete only the fonts that have been added for OpenOffice.org.

Renaming Fonts

You can also rename fonts added for OpenOffice.org. This is especially useful for fonts that contain several localized names (such as an English and a Japanese name). There are also fonts that contain an unreadable name. You can replace this with a suitable name.

1. Start spadmin.
2. Click **Fonts**.
3. Select the fonts you want to rename and click **Rename**.
4. Enter a new name in the dialog that appears. If the font contains several names, these names will serve as suggestions in the combo box where you enter the new name.
5. Click **OK**.

If you select several fonts to rename, one dialog appears for each selected font.

If you have selected a TrueType Collection (TTC), one dialog appears for each of the fonts contained in it.

Installing a patch under the Solaris™ Operating Environment

To carry out a correct installation, the system patches described in the chapter System Requirements on page 9 have to be installed. To install a system patch, proceed as described in the following example for patch #106327-08. In this example, we assume that the patch is compressed in the file `106327-08.zip`, e.g. after downloading it from `http://sunsolve.sun.com`

1. Log in to the system with root access rights:

```
su -
```

2. Create a temporary directory for unpacking the compressed patch file, e.g. **/tmp/patches**.

```
mkdir /tmp/patches
```

3. Copy the compressed patch file to this directory and unpack it there:

```
unzip 106327-08.zip
```

4. Install the patch using the command **patchadd**:

```
patchadd 106327-08
```

5. After successful installation of the patch, you can remove the temporary directory:

```
rm -rf /tmp/patches
```

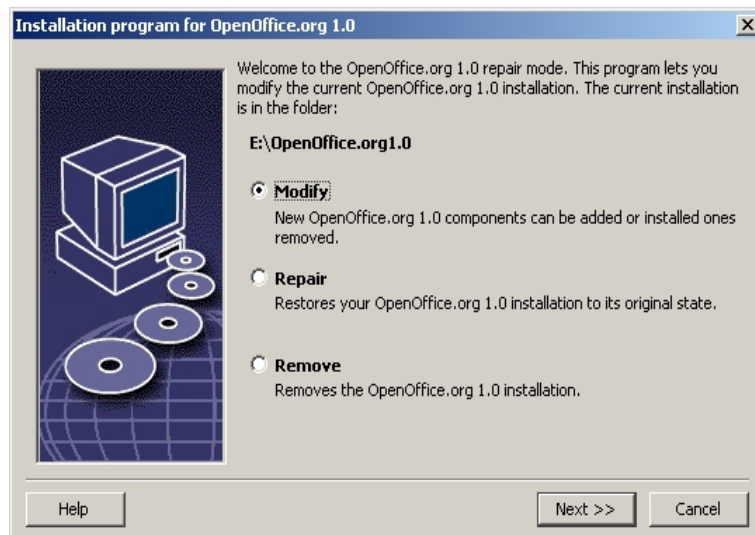


Use the command **showrev -p** or **patchadd -p** to display a list of the patches already installed on your system. To deinstall a patch, enter the command **patchrm**.

Modifying the OpenOffice.org Installation

Calling the Setup program again after OpenOffice.org is already installed leads you to a dialog that allows you to either modify, repair or remove an existing installation.

You can also call the setup program from the installation directory. If the setup program recognizes a OpenOffice.org installation, it will offer to repair the version on the hard drive.



Modify

If you select the **Modify** option, you will see the same dialog as for the Custom Installation. This dialog enables you to define which OpenOffice.org components you want to add or remove.

The gray boxes represent the components which have not been installed. When you click a gray box, it will become colored indicating that that component will also be installed.

The components that have already been installed have a colored box in front of them. When you click such a box, it will be highlighted by a red mark which indicates that that component will be deleted from the installation.

A plus sign in front of a component indicates that there is a group of components to be found there. To view the whole group, click the plus sign. Now you can select the individual components to install or delete.



Please note that the graphics filters are listed under the "optional components".

Repair

Choose the **Repair** option in the OpenOffice.org Setup program to repair your OpenOffice.org when entries in the system registry are no longer correct. The repair function will try to restore unintentionally deleted program files.

Remove

Deinstallation deletes OpenOffice.org entries contained in the registry of the corresponding operating system and also the files mentioned in the previous paragraph. Furthermore almost all of the files and folders in the OpenOffice.org directory will be deleted except for those that you have created or altered after having installed the program or those needed by the setup program itself. Therefore, your documents and most of the settings will be kept. When working under **Windows** you can activate/ deactivate a check box which decides if files created in the OpenOffice.org folder are also to be deleted or kept.



If you cannot immediately delete some of the program files under Windows, delete them directly after restarting your system.

If you want to remove the server installation on the network, you have to completely delete the entire OpenOffice.org folder on the server. All user installations based thereon will be automatically deactivated.

Setup Parameters

The parameter **-repair** calls the setup program and repairs OpenOffice.org without any dialogs being displayed.

The parameter **-net** or **-n** starts the server part of the network installation.

In the parameter **-D:destination_path** the information you enter in place of "destination_path" specifies the path where OpenOffice.org is to be installed.

In the parameter **-F:application_name** the information you enter in place of "application_name" specifies the name of an application that is to be started immediately after installation.