

,í,ŕ,ŕ,É



Explzh for Windows ,Æ,Í,ŕH

Explzh for Windows ,Í Windows ,ì Windows fGfNfXfvf[]f%
,ìfCf“f^[]ftfF[]fX,ðžQ[]i,É,μ,Ä,ŕ,μ,½ Win95/98/ME/NT4.0/2000/XP —
p,ìftf@fCf<fA[]fjfCfufc[]f<,Ä,·[]BLZH/ZIP/ARJ/ISH/TAR/TAR-GZ(BZ2)/GZ/CAB/RAR/BZA/GZA/
GCA/YZ1/ACE Ć Ž®,ìftf@fCf<,É'í%ž,μ,Ä,č,Ü,·[]B

Žã,È“Á'¥,Æ,μ,Ä[]A

[]i'ĆÉ“à,ìftf@fCf<fŠfXfg,ðfGfNfXfvf[]f%•— (fcfŠ[]fjf...[]^fŠfXfgfj...[]) ,É•\Ž|,·,éŠOŠi
[]i“WŠ[]^k,ð^ÓŽ,·,[]A'ĆÉ“à,ìftf@fCf<,ðfGfNfXfvf[]f%“à,ìftf@fCf<'€[]i,Æ,Ü,Ú“~,ŕ,æ,ŕ
,É'€[]i,Ä,«,éfcf“f^[]ftfF[]fX[]B(ĆÉ“àftf@fCf<,ìĆÄ•É,ì%ž“€[]A'ĆÉ“à,ìftf@fCf<,ð%ž“€
,·,·,É•Ò[]W,·,é<@“\[]A,n,k,d,Q,c[]·,c<@“\,É,Ç)
[]iUU(XX)Encode ,³,é,½fefLfXfgftf@fCf<,Æ Base64
ftfH[]f}fbfgĆ Ž®,ìfefLfXfgftf@fCf<,ìUUDecode, MIME(Base64) fffR[]fh<@“\
[]iGfNfXfvf[]f%[]ã,ìi'ĆÉ“à,ìftf@fCf<,âftf@fCf<“à•ŕŽš—ñ,ðĆY[]ð,·,é[]ĆÉ“àĆY[]ð<@“\
[]iArchiverDLL[]AExplzh
,ì[]Ä[]V“Ä,ðf ffbfN,μ[]A("¼)Ž©“®“i,É[]Ä[]V“Ä,ìf_jEf“f[]fh[]•Ž©“®fCf“fXfg[]f<,Ä,«,éŽ©“®fAf
bfvff[]fg<@“\[]B [] wfA[]fjfCfoDLL,ìŽ©“®[]X[]V<@“\[]x
[]i;ftf@fCf<•aŠ,·<@“\
[]B,Ü,½[]A[]i[]Ćã,ì•aŠ,,ftf@fCf<,ðž©“®,Ä•œĆ³,·,é[]AZ©ĆÉ~ACE<(•œĆ³)<@“\[]B

“™,ðž[],Á,Ä,č,Ü,·[]B

,>,ì¼[]AfVfFf<fGfNfXfef“fvfj“<@“\,É,æ,Ä,Ä[]CfGfNfXfvf[]f%o,ì%EfNfŠfbfNf[]fj...
[]i,Ö[]u[]ĆÉ[]i[]v[]C[]u'žž%ž“€[]v[]C[]uISH []i[]v“™,ìf[]fj...[]i,³Ç%Ä,³,é[]C,Ü,½[]ASendTo
%ž“€fGfNfXfef“fvfj“[]CSendTo^³[]kfGfNfXfef“fvfj“™,ì•Ö—~,É<@“\,à'Ç
%Ä,³,é,Ü,·,ì,Ä[]CfGfNfXfvf[]f%o,Æ—Z[]ž,μ,½[]ĆÉ'€[]i,à%Ä“\,Æ,É,è,Ü,·[]B

Explzh ,ì[]AfVfFfAfEfGfA,Ä,·[]B[]iĆã,àfo[]fWfj“fAfbfv,ð[]d,È,Ä,č,^x,É,à,Ç,ŕ
,©fvfFfAfEfGfA,É'í,·,é,²—[]%ž,ð<X,μ,,“Šè,č,μ,Ü,·[]Bm(_)_m
,Ü,½žž—pĆã,ìŠ'z,É,Ç,ð,·,·,©,¹,č,½,¾,·,è,ì—L,è“i,ŕ,ŕ,Ü,·[]B

“®ïšĀ«

Win95/98/NT4.0/2000/ME/XP ,ìA,ç,,é,à“ú- {Ĉê”Āă,Ā“®ï,μ,Û,·B

fRf,f“fRf“fgf□□|f<,lfo□[fWf#f“,lĈĀ,ç,à,l,“±“ü,³,ê,Ā,ç,éšĀ«□iWindows95A ,â□%šú,l
NT4.0□j,Ā,l“®ï,ÉšÖ,μ,Ā•s<i□#“™ ,^q□¶,¶,éêê#^q, ,é,©,à,μ,ê,Û,¹,ñ□B(IE4.01 ^Ēă,^q“±“ü,³,ê,Ā,ç
,ê,l-â‘è,Ē,“®ï,Ā,«,é,±,Æ,ðšm”F□l,Y)

fCf"fxfg[]f< (["CEÉ'€[]i,É•K—v,È DLLftf@fCf<)

'OfO[]fWf#f",i Explzh ,@["® ,ç,Ä,È,ç,±,Æ,ðŠm"F,μ[]Af_fEf"f[][]fh,μ,½ EXPLXXX.EXE ,ðŽÀ[]s,μ,Ä %oo°,ç,ç[]BŽ@ "®"l,ÉfCf"fxfg[]f%oo,ªN"® ,μ,Ü,·,·,ì,Å[]ACEã,ÍŽwŽ!,É[]],Á,Ä%oo°,ç,ç[]B Windows NT ,â Windows 2000 ,Å,ÍfAfhf~fjfxfgfCE[]f^[]fCEfxf<,Íft[]fU[]],ÅfCf"fxfg[]f<,μ,Ä %oo°,ç,ç[]B

[]; INSTALL.EXE ,ÍfAf"fCf"fxfg[]f<,àCE",È,½fvf[]fOf%of€e,Å,·,·,ì,Å[]A[]í[]œ,μ,È,ç,æ,ª'[]^Ó,μ,Ä %oo°,ç,ç[]B(fAf"fCf"fxfg[]f%oo,ªN"® ,Å,«,,È,,È,Ä,Ä,μ,Ü,ç,Ü,·) INSTALL.EXE ,ÍfCf"fxfg[]f<CEã,à[]ASÖ~A•t,[]AfVfFf<fGfNfXfef"fVf#f",ì[]Ý"è,È,Ç,ð•ì[]X,·,éfc[]f<,Æ,μ,Ä,à, "Žg,ç %oo°,ç,ç[]B

[]Ý["CEÉ'€[]i,É•K—v,Èftf@fCf< (DLL)[]Ý

- ,k,y,g["CEÉftf@fCf<,ì'€[]i,ð,·,é^x,É,Í UNLHA32.DLL
- ,y,h,oCE`Ž® ,ì["CEÉftf@fCf<,ð%oð"€,·,é^x,É,Í UNZIP32.DLL
- ,y,h,oCE`Ž® ,ì["CEÉftf@fCf<,ð^³[]k,·,é^x,É,Í ZIP32.DLL
- ,y,h,oCE`Ž®Ž©CEÉ%oð"€["CEÉ,ð[]i[]-,·,é^x,É,Í SFX32GUI.DAT
- ,` ,q,iCE`Ž® ,ì["CEÉftf@fCf<,ð'€[]i,·,é^x,É,Í UNARJ32.DLL
- ,h,r,gCE`Ž® ,ì["CEÉftf@fCf<,ð'€[]i,·,é^x,É,Í ISH32.DLL
- ,s,` ,qCE`Ž® ,ì["CEÉftf@fCf<,ð'€[]i,·,é^x,É,Í TAR32.DLL
- ,b,` ,aCE`Ž® ,ì["CEÉftf@fCf<,ð'€[]i,·,é^x,É,Í CAB32.DLL
- ,q,` ,qCE`Ž® ,ì["CEÉftf@fCf<,ð'€[]i,·,é^x,É,Í UNRAR.DLL ,Æ UNRAR32.DLL
- ,a,f,` []^ ,f,y,` CE`Ž® ,ì["CEÉftf@fCf<,ð'€[]i,·,é^x,É,Í BGA3232.DLL
- ,f,b,` CE`Ž® ,ì["CEÉftf@fCf<,ð'€[]i,·,é^x,É,Í UnGCA32.DLL
- ,x,y,PCe`Ž® ,ì["CEÉftf@fCf<,ð'€[]i,·,é^x,É,Í YZ1.DLL
- ,` ,b,dCE`Ž® ,ì["CEÉftf@fCf<,ð'€[]i,·,é^x,É,Í UNACEV2.DLL

,ª•K—v,Ä,·[]B[]ã<L,·,x,Ä,ì•K—v,È DLL ,í[]A

<http://www.csdinc.co.jp/archiver/> ("[]#fA[][]fjfcfofvf[]fWfFfNfg)

,©,çŽè,É"ü,ê,ç,ê,Ü,·[]B(í,É[]Ä[]V"Ä,ª'u,©,ê,Ä,ç,Ü,·) ^È[]ã,ì,ç,·,ê,©,ª'[]Y,·,ê,ì[]A'[]Y,·,é DLL,É%ož,¶,½["CEÉ,ì'€[]i,ª[]s,È,·,Ü,·[]B'É[]í[]A,±,ê,ç,ì DLL ,í Windows ,ì System(NT ,Ä, ,ê,ì System32)ftfHf<f_ÖfRfs[]],μ,Ä,- ,¾,¾,ç,ç[]BfA[][]fjfcfoDLL,ìŽ©"®[]X[]V<@"\,©,ç "Ž©"®fCf"fxfg[]f<" ,ðŽÀ[]s,ª,ê,½[]ê[]#,É,ÍŠù,ÉŽ©"®fCf"fxfg[]f<,ª,ê,Ä,ç,Ü,·,·,ì,Ä System ftfHf<f_Ö,ìŽè"® ,É,æ,éRfs[]],ì•K—v, ,è,Ü,¹,ñ[]B(GCAC.EXE, UNACEV2.DLL ,ìŽ©"®fCf"fxfg[]f<,Ä,«,,Ü,¹,ñ,ì,Äft[]fU°r,Ä System ftfHf<f_Ö,ìŽè"® ,É,æ,éRfs[]],ð,·,±,È,Ä,Ä,- ,¾,¾,ç,ç)

,»,'¼AUnGCA32.DLL ,ð—~—p,μ,Ä GCA'ŒÉ,ðì—,·,é,½,β,É,ÍACE»ó,ìŽd—I,Å,Í 'GCAC.EXE'
,à•K—v,Å,·BGCAC.EXE ,ÍAhttp://www1.odn.ne.jp/~synsyr/gca.html (GCA,ifyfW)
,©,ç“üŽè,Å,«,Û,·B

'GCAC.EXE' ,Íă<L URL fAfhfŒfX,æ,è“üŽè,μ,Ä,,¾,¾,çB

ŠÖ~A€-ÚFfA[fjfcfoDLL,ìŽ©“@XV<@”\

fAf“fCf“fXfg[]f<

fRf“fgf[]f<fpfif<,i[]ufAfvfŠfP[]fVf+f“,i'Ç%Á,Æ[]í[]œ[]v,©,ç[]uExplzh for
Windows[]v,đ'l,ñ,Å[]í[]œ,μ,Á%°³,ç[]BExplzh SÖ~A,lftf@fCf<,ª[]í[]œ,³,ê[]AExplzh
,lf[]fWfXfgfŠ,i[]Ý'è,ª-•[]Á,³,ê,Ü,·[]B

[]fRf}f“fhf%ofCf“,©,ç[]A"install.exe /d" ,ÆŽw'è,μ,ÄŽÀ[]s,·,é,±,Æ,Å,àfAf“fCf“fXfg[]f<,Å,«,Ü,·[]B

Explzh for Windows 3.15 beta1

Copyright (c) 1996-2001 鬼東 裕之
 Licensed to : 未登録
 Explzh はシェアウェアです。

OS: Windows NT 5.0.2195 Service Pack 1
 IE: 5.50.4134.0600
 Shexplzh.dll 2, 47, 0, 0

Archiver DLL バージョン情報

UNLHA32.DLL	1.53.8.23	2000/12/11	(c) M i c c o
UNZIP32.DLL	5.40	1999/02/10	(c) shoda T.
ZIP32.DLL	2.30	1999/12/22	(c) Info-ZIP
SFX32GUI.DAT		1998/10/11	(c) 吉岡 恒夫
TAR32.DLL	2.12	2000/12/25	(c) 吉岡 恒夫
CAB32.DLL	0.92	2000/08/01	(c) 宮内 邦昭
UNRAR32.DLL	0.06	2001/01/11	(c) 亀井 哲弥
UNRAR.DLL		1999/10/23	(c) Eugene Roshal
UNARJ32J.DLL	0.44.0.5	2001/01/01	(c) M i c c o
ISH32.DLL	0.37	1998/08/01	(c) nonki
BGA32.DLL	0.32	2001/01/13	(c) 木村 利靖

最終DLLチェック日: 2001/01/25

最新版へアップデート(U)...

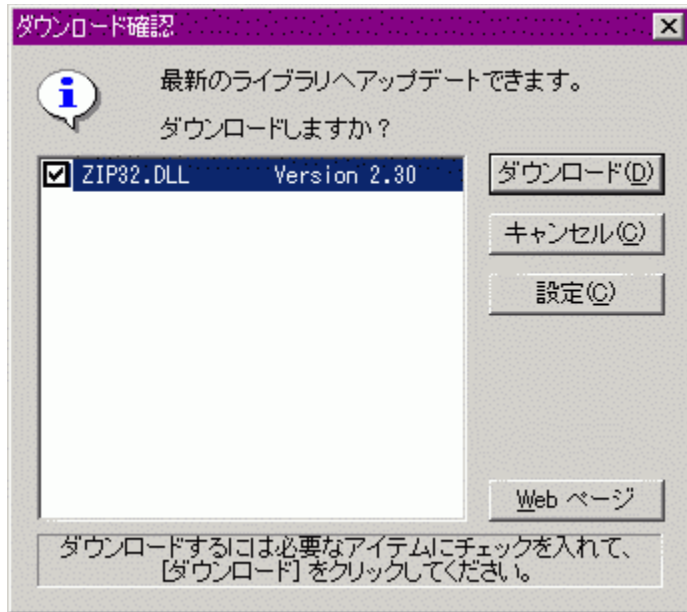
インターネット接続の確認

インターネットに接続し、最新のアーカイバ DLL のバージョンをチェックしますか？

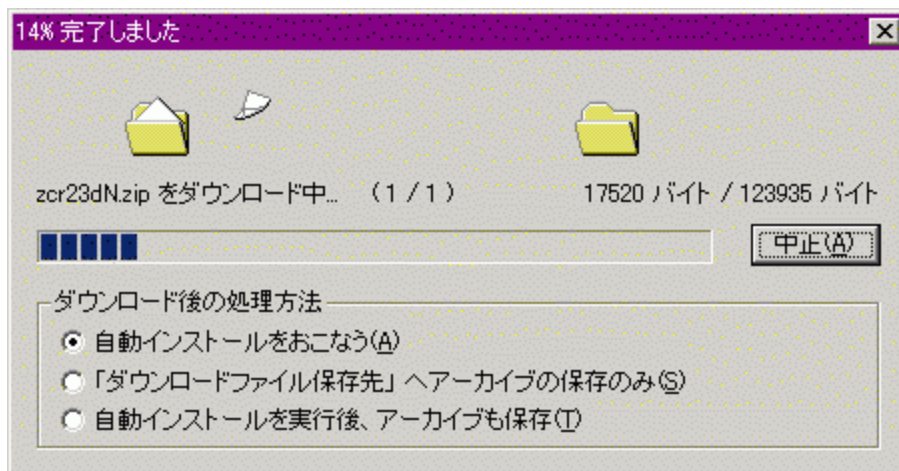
今後このメッセージを表示しない(N)

OK
 キャンセル(C)
 接続設定(F)

最新ライブラリへアップデートできます。
 ダウンロードしますか？
 ZIP32.DLL Version 2.30
 ダウンロード(D)
 キャンセル(C)
 設定(O)
 Web ページ
 ダウンロードするには必要なアイテムにチェックを入れて、
 [ダウンロード]をクリックしてください。



ダウンロード確認
 最新のライブラリへアップデートできます。
 ダウンロードしますか？
 ZIP32.DLL Version 2.30
 ダウンロード(D)
 キャンセル(C)
 設定(O)
 Web ページ
 ダウンロードするには必要なアイテムにチェックを入れて、
 [ダウンロード]をクリックしてください。



zcr23dN.zip をダウンロード中... (1 / 1) 17520 バイト / 123935 バイト
 中止(A)
 ダウンロード後の処理方法
 自動インストールをおこなう(A)
 「ダウンロードファイル保存先」へアーカイブの保存のみ(S)
 自動インストールを実行後、アーカイブも保存(T)

□;Ž©“@fCf“fXfg□[f<,đŽÀ□s
f_fEf“f□□[fhĀã□ADLL (Explzh) ,ìfCf“fXfg□[f<,đŽÀ□s,μ,Û,·□B
SeDLL ,í Windows\System (NT ,Ā, ,ê,î Winnt\System32)
,ÖfRfs□[,³,ê,Û,·□B,» ,ê^ÈŠO,ìftfHf<f_ ,ÉfCf“fXfg□[f< ,·,é,±,Æ,Í,Ā,« ,Û,¹,ñ□B

□;□uf_fEf“f□□[fhftf@fCf<•Û‘¶□æ□v,ÖfA□[fjfCfu,ì•Û‘¶,ì,Ý
Ž©“@fCf“fXfg□[f<,íŽÀ□s,¹, ,□A□Û‘±□Ý‘è,ĀŽw‘è,μ,½□uf_fEf“f□□[fh•Û‘¶□æ□v,ÖfA□[fjfCfu,ìfRfs
□[,ì,Ý,đ,¨,±,É,ç,Û,·□B

□;Ž©“@fCf“fXfg□[f<,đŽÀ□sĀã□AfA□[fjfCfu,à•Û‘¶
Ž©“@fCf“fXfg□[f<,ÆfA□[fjfCfu,ì•Û‘¶,đ,¨,±,É,ç,Û,·□B

ŠeŽí,ìfñffj...[]l,ìà-¾

[ftf@fCf<]fñffj...[]

[•ÒW]fñffj...[]

[•Ž:]fñffj...[]

[fc[]f<]fñffj...[]

[ftf@fCf<]f f jf... f l

V<K i

'CEÉftf@fCf<,ðŠ],

-¼'O,ð•t,-,Ä•Û'¶

ftf@fCf<,ð•Â,¶,é

'CEÉ, i³"-¶«CEŸ¶

fvf¶pfefB

fAfvfŠfP¶[fvf#f", i¶l—¹

[•òw]fjff...l

%ođ“€

MS EXPAND“WŠJ

ŽÀs

frf...lfA

ŽŽ€+ŽÀs

fZfbfgfAfbfvŽÀs

∅,èŽæ,è

fRfsl

“\,è•t,~

íœ

-¼‘O,ì•lX

^3k

Ž©€È%ođ“€‘€É,ìì-

[•\Ž!]f fff... [[

ÅV, ìî•ñ, ÉXV

fVfVf#f"

., x, Ä, fAfCfRf", ð•\Ž!

[fc [f<]f fjf... [

‘É“àÿ

LHa‘É,ðRf}f“fhf%ofCf“,Á‘€

‘è^ ^k

fEfCf<fXfXfLfff“

ftf@fCf<,ð•ªŠ„

•ªŠ„,ftf@fCf<,ð~ACE<

fNfŠfbvf{ [fh“àfefLfXfg,}fffR [fh

□V<K□ì□¬

□u□V<K<N“®□v,Å,Í□A-³'è,ì Explzh,đ<N“® ,μ,Û,·□B

□uftfHf<f_□ì□¬□v,Å,Í□A□'CEÉ“à,É□u□V,μ,†ftfHf<f_□v,đ□ì□¬ (LHa / ZIP / BGA CE`Ž® ,ì,Ý) ,μ,Û,·□B

☐'ĀÉftf@fCf<,đŠJ, Ctrl + O

'î%ž,µ,Ä,č,é☐'ĀÉLZH, ZIP, ARJ, TAR, TAR-GZ(Z, bz2), GZ, Z, BZ2, deb, cpio, ar, lib, a, CAB, RAR, BZA, GZA, GCA, YZ1, ACE Ā`Ž® ,ì☐'ĀÉÉ,đŠJ,Ž-,ā,Ā,«,Ü,·☐B

☐| LHA, ZIP, CAB, ARJ, RAR, BZA, GZA, GCA, YZ1, ACE Ā`Ž® ,ĪŽ©ĀÈ%žđ“€☐'ĀÉĀĀ`Ž® ,àŠJ,Ž-,ā,Ā,«,Ü,·☐B

ISHftf@fCf<,í Explzh ,ì%žæ-Ē,©,ç,ífl☐[fvf“,Ā,«,Ü,¹,ñ☐B

-¼'O,ð•t,¯,Ä•Û'¶

□ì<Æ't,ì□'CEÉ,ðŽw'è,μ,½□ê□Š,Ö-¼'O,ð•t,¯,Ä•Û'¶,μ,Û,·□B

□□'CEÉCE`Ž® ,ð•İŠ·,μ,Ä•Û'¶,·,éŽ-,à,Å,«,Û,·□B

□'CEÉCE`Ž® ,ð•İŠ·,μ,Ä•Û'¶,μ,½,ç□ê□‡,í□A□u□'CEÉCE`Ž® ,ð•İŠ·,μ,Ä•Û'¶□v,ìf`fFbfN,ð“ü,ê□A□u□'CEÉ,ìŽí—P□v,©,ç•İŠ•CEă,ì□'CEÉ,ìŽí—P,ð'İ'ð,μ□A□u•Û'¶□vf{f^f“,ðfNfŠfbfN,μ,Ä,,¾,¾,ç□B

ftf@fCf<,đ•Â,ŋ,é

Šù'ŋ,ì□'ĀÉftf@fCf<,đ•Â,ŋ,Û,·□B

f^fCfjf<,í "-³'è" ,Æ,È,è<N" @'¼Āă,ì□ó'Ô,É,È,è,Û,·□B

☐‘☐☐☐,ì☐³“-☐☐☐☐☐☐☐.

Ši”[ftf@fCf<,ì CRCfefXfg,đ☐s,☐☐ACE<%oÊ,ìf☐☐f|☐☐fg,đ•\Ž!,μ,Ü,·☐B

fvf fpfefB Alt + Enter

☐'ĀÉ"à,ì'ì'ð,³,è,Ä,ç,éŠi" [ftf@fCf<, ì☐î•ñ,ð•\Ž!,μ,Ü,·☐B

☐u☐'ĀÉftf@fCf<, ì☐î•ñ☐v,Å,Í☐A☐'ĀÉftf@fCf<, ìŠi" [ftf@fCf<fŠfXfg,ð•\Ž!,μ,Ü,·☐B
*.EXE, *.ICO, *.ANI, *.CUR, *.BMP ,ìfvf fpfefB,Å,ìfAfCfRf", ìŠm" F,ª,Å,«,Ü,·☐B

EXE ,â DLL ,È,Ç, ìŽÀ☐sftf@fCf<, Å, Í☐A,» ,ìftf@fCf<fo☐ìfWf+f"" Ô☐t,ðŽæ"¾,μ,Ä•\Ž!,μ,Ü,·☐B

fAfvfŠfP[fVfjf“,ìI—¹

Explzh,đI—¹,μ,Ü,·B

%ođ“€ Ctrl + E

☐‘ĀÉ“à,ìšì”[ftf@fCf<,đ%ođ“€,μ,Û,·☐B

fAfCfef€,ì‘đ☐ó‘Ô,É,æ,Á,Ä^È%oº,ì,æ,ɹ,É%ođ“€,³,ê,Û,·☐B

☐ŸftfHf<f_ ,ª‘I‘đ,³,ê,Ä,ç,é☐ê☐‡

‘I‘đ,³,ê,Ä,ç,éftfHf<f_ ^È%oº,đ%ođ“€,μ,Û,·☐BftfHf<f_ ^È%oº,ìftfHf<f_,à☐Ä<A“I,ÉĀÿ☐đ,μ,Ä%ođ“€ ,μ,Û,·☐B

☐Ÿftf@fCf<,ª‘I‘đ,³,ê,Ä,ç,é☐ê☐‡

‘I‘đ,³,ê,Ä,ç,éftf@fCf<,đ%ođ“€,μ,Û,·☐BftfHf<f_☐î•ñ,ª, ,Á,Ä,àftfHf<f_,í☐☐¬,μ,Û,¹,ñ☐B‘I‘đftf@fCf<,ì, Ý,đ%ođ“€,μ,Û,·☐B

☐Ÿftf@fCf<,ª-³‘I‘đ☐ó‘Ô,ì☐ê☐‡

☐‘ĀÉ“à,ìftf@fCf<,đ‘S,Ä%ođ“€,μ,Û,·☐B☐!☐u‘S%ođ“€☐v,Æ“¬ ,ŋ,Å,·☐B

☐Ÿfçš☐[fçf...☐[,ìf<☐[fg,ª‘I‘đ,³,ê,½☐ó‘Ô,ì☐ê☐‡

☐‘ĀÉ“à,ìftf@fCf<,đ‘S,Ä%ođ“€,μ,Û,·☐B☐!☐u‘S%ođ“€☐v,Æ“¬ ,ŋ,Å,·☐B

☐! ISH ftf@fCf<,ì“WŠJ,í Explzh ,ì%oæ-Ê,©,ç,í☐s,ì,Û,¹,ñ☐BfGfNfXfvf☐☐[f%o,ìf☐fj...
☐[.©,ç☐‘ĀÉftf@fCf<,đ‘I‘đ,μ,Ä☐u‘!Žž%ođ“€☐v,©%oEf}fEfXfhf☐fbfvŽž,ì☐u,±,±,É
%ođ“€☐v,Å“WŠJ,Å,«,Û,·☐B

%ođ“€,đ‘t‘f,μ,½,çŽž,í☐Afrf...☐[“à,đ%oEfNfšfbfN,·,é,©☐AESCFL☐[,Á‘t‘f,Å,«,Û,·☐B

MS EXPAND“WŠJ

Microsoftftf@fCf<^3kft[fefBfŠfefB 'COMPRESS.EXE' ,đŽg—
p,μ,Ä^3k,^3,ê,½‘CEÉ“à,łtf@fCf<,đ”C^Ó,łtfHf<f_,É•œCE^3,μ,Ü,·B
(i Šg’£Žq,^AEX_, HL_, TX_ ,ì,æ,α,Èftf@fCf<,Å,.)

^3k‘O,ìCE^3,ì^3,μ,çftf@fCf<-¼,đŽæ“¾,Å,«,È,çêê†,É,í (*.EX_ ,í *.EX
,È,Ç,Æ,È,éêê†)AŠg’£Žq,đ^3,μ,fŠfl[f€,μ,Ä,,¾,¾,çB

ŽÀs Enter

‘ĀÉ“à,ì‘đ,³,ê,½ftf@fCf<,đŠÖ~A,Ā,¯,ç,ê,½ftf@fCf<,ĀŽÀs,μ,Û,·□B

f}fEfX,É,æ,éf_fuf<fNfŠfbfN□AfL□[f{□[fh,ì Enter (RETURN) fL□[,Ā,àŽÀs,Ā,«,Û,·□B
fZfbfgfAfbfvftf@fCf<,đŽÀs,μ,½□ê□#(□uflfvfVf#“□v-□u¼fAfvfŠ,Æ,ì~A“@□v-
□ufZfbfgfAfbfvŽÀsŽž,ìŽÀsftf@fCf<□v,ĀŽw’è,μ,½ftf@fCf<)□A□‘ĀÉ“à,ìftf@fCf<‘S,Ā,ª^êžž□i<Æft
fHf<f_,É%øđ“€,³,ê□A□uŽžĀ±ŽÀs□v,Æ“¯,¶,æ,α,ÉŽÀs,³,ê,Û,·□B□;*.INF
(fZfbfgfAfbfv□î•ñftf@fCf<),đŽÀs,μ,½□ê□#,Ā,à“¯—l,Ā,·□B(,±
,l□ê□#,lfZfbfgfAfbfv,đŽÀs,·,é,©,lŠm“Ff_fCfAf□fO,ª•\Ž!,³,ê,Û,·)

ŽÀs,μ,½•Ò□W%øĀ“\
,Èftf@fCf<,đ•ī□X,μ,½□ê□#,í□A□u□‘ĀÉ□X□VŠm“F□vf□fbfZ□[fW,©,ç□A□‘ĀÉ,đ□X□V,·,éž-
,ª,Ā,«,Û,·□B

frf... [fA [uCtrl + T v [uCtrl + Q v

fefLjXfgfGfffBf^,Á,Í[A'CEÉ"à,ì'í'ð,³,ê,½ftf@fCf<,ðŽw'è,ìfefLjXfgfGfffBf^ [A,Ü,½,ìfefLjXfgf...
 [fA,ÁŠJ,«,Ü,· [BfRf}f"fhf%ofCf"flfvfVf#f",ðŽw'è,μ,Ä, ,ê,Í [AfIfvfVf#f",ð•t,«,Á<N" ®,μ,Ü,· [B

fNfCfbfNfrf... [fA,Á,Í[A'CEÉ"à,ì'í'ð,³,ê,½ftf@fCf<,ðfNfCfbfNfrf... [fA(Quikview.exe)
, ©, çŠJ, «, Ü, · [B

,à,μfNfCfbfNfrf... [fA,ðfCf" fXfg [f<,³,ê,Ä,ç,È,¯,ê,î%½,à [s,È,ç,Ü,¹,ñ [B
fefLjXfgfGfffBf^,ìffftfHf<fg,Á,lf [f,' (notepad.exe), ©, çŠJ, «, Ü, · [B [ufIfvfVf#f" [v-
 [u'¼AfvfŠ,Æ,ì~A" ® [v,ì [ufefLjXfgfGfffBf^ [v,Á [D,Ý,ìfefLjXfgfGfffBf^,É [Ý'è,μ'¼,μ,Ä,,¾,¾,ç [B

[; [ufNfCfbfNfrf... [fA [v,Í Windows 95/98 ,É,í•W [€,Á•t' ®,μ,Ä,ç,Ü,· [B

ŽŽĀ±ŽÀs Ctrl + R

‘ĀÉ“à,ì’S,Ä,ìftf@fCf<,ðì<ÆftfHf<f_,É%ð“€„μA‘l‘ð,³,è,Ä,ç,éftf@fCf<,ðŽÀs,μ,Û,·B

Setup.exeAInstall.exe

“™,ìftf@fCf<,íAŽŽĀ±ŽÀs,ð‘l‘ð,·,é,¾,¯,ÅfCf“fXfg[f<,Û,Ä,ð‘S,Ä,â,Á,Ä,μ,Û,π,ì,Å•Ö—
~,Ä,·B‘¼,É,à‘P‘Æ,Å<N“®„Ä,«,È,çfAfvfŠ,ìŽÀs,ð,·,éèè†,ÉŽÀs,μ,Ä,,¾,¾,çB

‘ĀÉftf@fCf<,ð•Â,¶,é,©AExplzh,ðl—¹,·,éÛ,Éì<ÆftfHf<f_,É%ð“€
,μ,½‘S,Ä,ìftf@fCf<,ííœ,³,è,Û,·B

fZfbfgfAfbfvŽÀs F4

uflvfVfjf“v-u’¼fAfvfŠ,Æ,l~A“@v-
ufZfbfgfAfbfvŽÀsŽž,lŽÀsfjf@fCf<v,ÅŽw’è,μ,½ftf@fCf<,²‘ĈÉ“à,ÉŠÜ,Ü,ê,éê#A‘ĈÉ“à,l’
S,Á,lftf@fCf<,ð\ÆftfHf<f_,É%ð“€,μA,»,lŽw’è,³,ê,½ftf@fCf<,ðŽÀs,μ,Ü,·B(ffftfHf<fg,Å,l
setup.exe;install.exe;setup*.exe;*setup.exe;inst*.exe;*inst.exe ,lftf@fCf<,ðĈÉYð,μA
%½,ê,©,²ŠÜ,Ü,ê,éê#É,l,ÝŽÀs,³,ê,Ü,.)

,±,ì<@\,lufVfFf<fGfNfXfef“fVfjf“v,lŠg’£fjfj...[.É,à’Ĉ%Á,³,ê,Ä,č,Ü,·BŠg’£fjfj...[.©,ç,±
,ì<@\,ðŽg,α,½,β,É,luflvfVfjf“v-ufVfFf<fGfNfXfef“fVfjf“v-
uú×Y’èv,lufZfbfgfAfbfvŽÀsfjfj...[.l’Ĉ%Áv,lj`fFbfN,ð“ü,ê,Ä,,¾,³,čB

Ø, è, ž, æ, è Ctrl + X

'l' ð, µ, ½ftf@fCf<, ðØ, èŽæ, è, Á, ÄfNfŠfbfvf{[]fh, É'u, «, Ü, ·B
Ø, èŽæ, Á, ½ftf@fCf<flfufWfFfNfg, Í" \, è•t, ÷æ, É^Ú" ®, µ, Ü, ·B(LHa/ZIP/BGACÉ`Ž®, ì'CEÉ, ì, Ý)

y' ^ Ó z

'CEÉ"à, lftf@fCf<, ðØ, èŽæ, è, Á, Ä'CEÉ"à, l" C^Ó, lftfHf<f_, Ö'£
, è•t, ÷, é, Æftf@fCf<, í'CEÉ"à, Á^Ú" ®, µ, Ü, , ðAfGfNfXfvf[]f%oo, Ö"\
, è•t, ÷, Ä, à'CEÉ"à, Éftf@fCf<, ÍŽc, Á, ½, Ü, Ü, Á^Ú" ®, µ, Ü, ÑB<t, ÉfGfNfXfvf[]f%oo
, ©, çØ, èŽæ, Á, ÄExplzh, É" \, è•t, ÷, Ä, àftf@fCf<, í^Ú" ®, µ, Ü, ÑB
, ±, ê, ÍŽd—l, Ä, ·B(^ ^; , ²—¹³, , ¾, ¾, çB

fRfs[] Ctrl + C

'l'đ,μ,½ftf@fCf<,đfRfs[],μ,ÄfNfŠfbjvf{[]fh,É'u,«,Ü,·[]B

fRfs[],μ,½ftf@fCf<,í[]A[]'CEÉ"à,É"\,è•t,¯,éŽ-,Å'Ç%ooÁ^³[]k,ª,Å,«,Ü,·[]B
,Ü,½[]AExplzh ,©,çfRfs[],μ,½ftf@fCf<,đfGfNfXfjvf[][]f%oo,Ö"\,è•t,¯,éŽ-,à,Å,«,Ü,·[]B

“\,è•t,~ Ctrl + V

fNfŠfbfvf{[fh,Éftf@fCf<fIfufWfFfNfg,ª, ,è,î,» ,ìftf@fCf<,đ‘ĀÉ“à,É^³k,μ,ÄŠi”[,μ,Ü,·B

fGfNfXfjvf[[]f%“™ ,© ,ç[u•ÒW[]“fRfs[[](Ctrl+C)v

“™ ,Åftf@fCf<,đfNfŠfbfvf{[fh,ÉfRfs[[] ,μ,Ä,“ ,«AExplzh“à,ìu•ÒW[]“\,è•t,~(Ctrl+V)v ,Å\
,è•t,~(^³k),Å,«,Ü,·B

[] Šù‘¶‘ĀÉÉ,Ö,ì“\,è•t,~ ,í LHa/ZIP/BGA/GZACE`Ž® ,ìê[]‡,ì,Ý%oÂ“\,Å,·B

íœ Delete

‘É“à,ì‘ð,³,ê,½ftf@fCf,ðíœ,μ,Û,:B

íœĀ,í•œĒ³,Ā,«,Û,¹,ñ(fSf~” ,É,í,ç,«,Û,¹,ñ ^ ^;),ì,Ā\•ª^Ó,μ,Ā,,¾,³,çB

LHa/ZIP/BGAE`Ž®,ì‘É,ìé±,ì,Ý,μ,©íœ,í,Ā,«,Û,¹,ñB

-¼'O,ì•ïX

Ç'ÉÉ"à,ì'l'ð,³,ê,½ftf@fCf<,ì-¼'O,ð•ïX,μ,Û,·B

%oEjNfŠfbfN(,Û,½,Í F2fL[]),É,æ,Á,Äf%ofxf<(ì§²Û-¼),ð',«Š,!,éŽ-,É,æ,èAfGfNfXfvf[]f
%oã,Åftf@fCf<,ì-¼'O,ð•ïX,·,é,ì,Æ"~,¶,æ,π,É-¼'O,ì•ïX,ð,·,éŽ-,à,Å,«,Û,·B

Ç| LHa/BGA/GZACE`Ž®,ìÇ'ÉÉ,ì,Ý

^3k Ctrl + P

^3k, ,éftf@fCf<,đ'í'đ, ,éf_fCfAf{fbfNfX,đ<N"@,μ,Ü,·B
Šù'¶,ì'CEÉftf@fCf<,ìèè,É,íASù'¶'CEÉ,Ö,ì'Ç%Á^3k,Æ,È,è,Ü,·B"-3'è"
,ìó'Ô,Å, ,é,íAf_f~[,ì'CEÉ(V<K000`V<K999),Å'CEÉ,đìì-,μ,Ü,·B
!fjff...[,ìu^3kV,©,ç,íAftfHf<f_,đ'í'đ,μ,Ä^3k, ,éŽ-,í,Å,«,Ü,¹,ñB
"^3k, ,éftf@fCf<,ì'í'đ"f_fCfAf{fbfNfX,đŠ,ç,½ó'Ô,©,çA'í'đftfHf<f_,đuCtrl +
Cv,ÅfRfs[,μ,Åf_fCfAf{fbfNfX,đ•Å,¶AExplzh,É"\\,è•t,_,Ä^3k, ,éA,Æ,ç,æ— <Z"l,È•û-@,à,
,é,É,í, ,é,ñ,Å, ,æ¥¥¥B(^ ^;

¶'CEÉ,í'È%º,ì•û-@,Åìì-,Å,«,Ü,·B

¶EfGfNfXfvf[f%º,ìfRf"fefLfXfgfjff...["à,ì,ì ¶'CEÉìì-(A) ,©,çB

¶E,c¶,cfRf"fefLfXfgfjff...[,ìu,±,±,É¶'CEÉ,đìì-(P)vì,Ü,½,íu,±,±,É 'xxx.xxx'
¶'CEÉ,đìì-(H)vìj,©,çB

¶EfGfNfXfvf[f%º,È,Ç,©,çftf@fCf<flfufWfFfNfg,đfRfs[,μ,ÄAExplzh ,ÖuCtrl + Vv(" \
•t,_)B

¶E<N"@'t,ì Explzh ,ìºæ-È,Öfhf%fbfO¶•fhf¶fbfvB

¶EfffXfNfgfbfv,Éìì-,³,è,½u^3k¶vAfCfRf"¶A,Ü,½,í Explzh ,ìVf#¶[fgjfbfg,Éftf@fCf<
(,Ü,½,ìftfHf<f_) ,đfhf%fbfO¶•fhf¶fbfvB

¶EfGfNfXfvf[f%º,ìu'—,éìv,©,çA¶u^3k¶v,Ü,½,í Explzh ,Öftf@fCf< (,Ü,½,ìftfHf<f_) ,đ'—
,éB

¶EfGfNfXfvf[f%º,ìºEfnfŠfbfNfjff...[,ìuV<Kìì-v,©,ç V<KLzhFile.lzh(,Ü,½,í
V<KZipFile.lzh) ,đìì-,μA,»,ìftf@fCf<,ìAfCfRf"¶ă,Öfhf%fbfO¶•fhf¶fbfvB

¶ìftfHf<f_,ì^3k,Å,íA'S,Ä'S'ífffBfCEfnfgfŠfìfvfVf¶f"Žw'è,Å,ì^3k,Æ,È,Á,Ä,Ü,·B

^3k,đ't'f,μ,½,çŽž,ìfjf...["à,đºEfnfŠfbfN, ,é,©AESCfL[,Ä't'f,Å,«,Ü,·B

Ž © Ć È % ð “ € ‘ Ć É , ì ï ñ –

LHa □ CZIP □ CCAB, BZA, GZA, YZ1 Ć ` Ž ® , Ì Ž © Ć È % ð “ € ‘ Ć É , ñ ï ñ – , Å , « , Ü , · □ B

Š Ŏ ~ A □ € – Ú □ FLHA-SFX, ì ï ñ – Ž ž f _ fCfAf □ fOf {fbfNfX, Ì Š e □ € – Ú , ì ñ à – ¾
Š Ŏ ~ A □ € – Ú □ FCAB-SFX, ì ï ñ – Ž ž f _ fCfAf □ fOf {fbfNfX, Ì Š e □ € – Ú , ì ñ à – ¾

ÅV,îî•ñ,ÉXV F5

ÅV,î'ÉÉ"àî•ñ,ðžæ"¾,µA•Ž!,µ,Ü,·B

'ÉÉ"à,lfeLfXfgftf@fCf<,È,Ç,ð•ÒW(•ïX),ª, ,Á,½ê±,Í•ïX,ì, ,Á,½ftf@fCf<,ð'ÉÉ,É',«-
ß,µA^³kCEã,ì'ÉÉ,ð"Ç,Ý¼,µ,Ü,·B(LHa ZIP CE`Ž®,ì'ÉÉ,ì,Ý)

Ši"[ftf@fCf<,ðfVf#[]fgjfbfg,Éfhf%fbfO•fhf[]fbfv,µ,ÄŠJ,ç,Ä•ÒW(•ïX)
,µ,½ftf@fCf<,ð'ÉÉ"à,É',«-ß,µXV,·,éŽ-,í,Å,«,Ü,¹,ñB

ftf@f"fNfvf#f"fl[[F5],ÅXV,Å,«,Ü,·B

![]wShift + F5x,Å'ÉÉXV"úŽž,ðŠi"[ftf@fCf<,ìÅV,É±,í,¹,éŽ-,ª,Å,«,Ü,·B

,.,x,Ä,lfAfcRf“,ð•\Ž!

,±,lf□fj...□[,đ'!`ð□Ej`fFfbfN,.,é,Æ□AŠi"[ftf@fCf<,l *.exe,*.ico, *.ani,*.cur ,lfAfcRf“,à•\Ž!,.,é,æ,x
,É,É,è,Ü,·□B

*.bmp ftf@fCf<,Å,ÍTf€fI□[f<•\Ž!,μ,Ü,.,ì,Å%œ'œ,ìŠm" F,ª,Å,«,Ü,·□B

•\Ž!,Å,«,é fAfcRf“,í□ufIfvfVf+f“□v-□u%œ-Ê□v,Å□Ý'è,Å,«,Ü,·□B

fIfvfvf#f“Y’èfvf#pfefB

fIfvfvf#f“Y’è,À,ÍŽŸ,ìY’è,ª,“,±,È,!,Ü,·B

,P#D%œ-Ê,ìY’è

Explzh ,ì%œ-Ê,ìY’èiftfHf“fgA•ŸšF“A”wEiF,È,Ç,ìY’è,ª,“,±,È,!,Ü,·B

,Q#DftfHf<f_,ìY’è

%ð“€æftfHf<f_ A•Ù’¶æftfHf<f_ ALHA/ZIP^—p,ì<ÆftfHf<f_ Aftf@fCf<,ðŠJ,-
ffftfHf<fgftfHf<f_ “™,ìY’è,ª,“,±,È,!,Ü,·BZIP^³k^—Žž,ì<ÆftfHf<f_,Í ZIP32.DLL v2.30
^Èã,ªfCf“fXfg[f<,³,è,½ŠÁ<«,Å,ì,Y—LCEø,Å,·B

,R#D¼fAfvfŠ,Æ,ì~A”®

fefLfXfgftf@fCf<,ð%{—,·,é^×,lfGfffBf^,ìY’èCfEfCf<fXfLfff“fvf#fOf%of€
,ìZw’èCfRf}f“fhf%ofCf“fpf%of[f^,ìZw’è,ª,“,±,È,!,Ü,·B

,S#D%ð“€ŽžIfvfvf#f“

%ð“€Žž,ìÚ×Y’è,ª,“,±,È,!,Ü,·B

,T#D^³kŽžIfvfvf#f“

^³kŽž,ìÚ×Y’è,ª,“,±,È,!,Ü,·B

,U#DfvfFf<fGfNfXfef“fvf#f“

fGfNfXfvf[f%<@“Šg’£ifVfFf<fGfNfXfef“fvf#f““jŽg—pŽž,ìÚ×Y’è,ðs,ç,Ü,·B

,V#DfJfXf^f€

Explzh ,ì%œ-Ê,lfJfXf^f€Y’è,ª,“,±,È,!,Ü,·B,±,ì€-Ú,ìY’è,Í,Žg,ç
,lfCf“f^ [fIfbfGfGfNfXfvf[f%ª IE4.0 ^Èã,ìŠÁ<«,Å,È,ç,ÆY’è,Å,«,Ü,¹,ñB

,W#D,»,ì¼,ìY’è

Šî-{"®iA•ŽiAŠm”Ff#fbfZ[fW,È,Ç,ìY’è,ð,“,±,È,!,Ü,·B

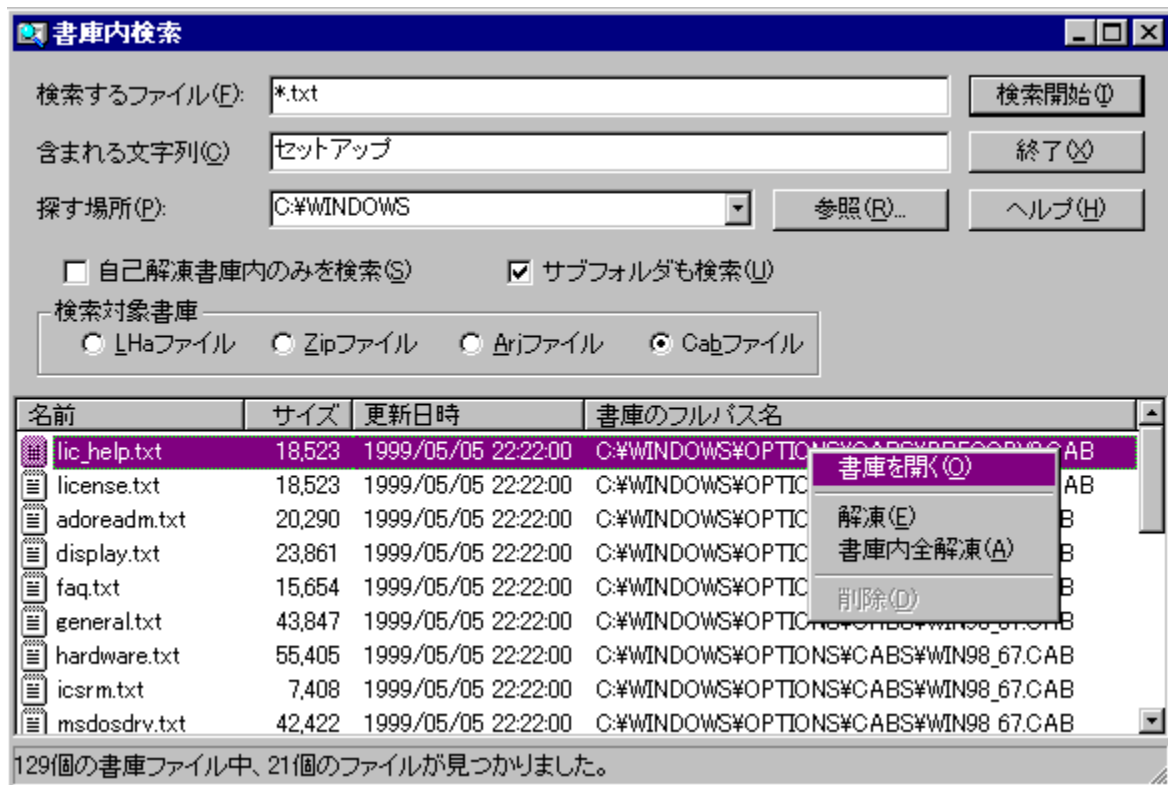
,X#DŽ©“@fAfbfvff[fG

fA[fJfCfoDLL,ìŽ©“@XV<@“\ ,É,Â,ç,Ä,ìY’èAf_fEf“f[fhŽž,ìÚ±“™,ìY’è,ðs,ç,Ü,·B

Še€-Ú,lfwf<fv,ð•Ž!,·,é,É,ÍAufIfvfvf#f“fvf#pfefBf_fCfAf#fOf{fbfNfXv,ðN“®,µ,½ó’Ô,Å
%Eã,ì H ,ðfNfŠfbfN,µA-Ú“l,ì€-Ú,ðfNfŠfbfN,µ,Å,¾,¾,çB

Žw'è,μ,½ftfHf<f_“à,ì'S□'ŒÉ,©,çŒÿ□ō Ctrl + F

Še□€-Ú,lfwf<fv,ð•Ž!,.,é,É,í□C-Ú“l,ì□€-Ú,ðfNfŠfbfN,μ,Ä,,¾,¾,¾,¾□B

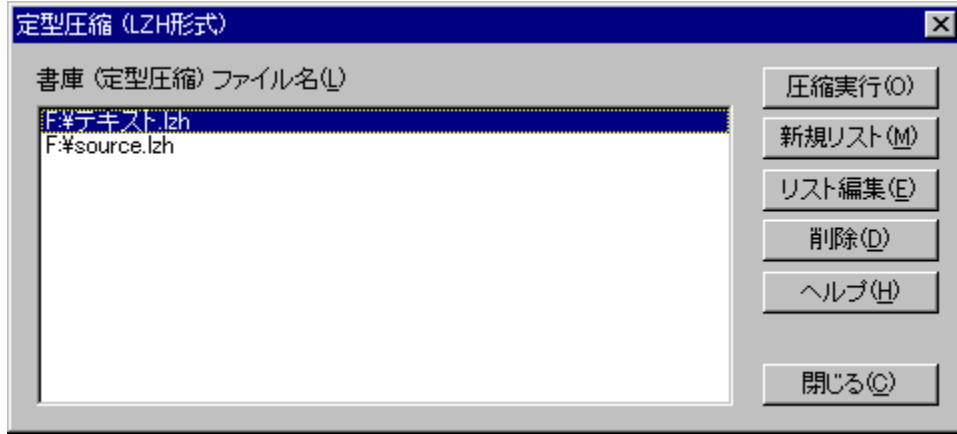


LHa □ 'ĈÉ,đfRf}f“fhf%ofCf“,Å'€□ì

LHa □ 'ĈÉ,đfRf}f“fhf%ofCf“,Å'€□ì,μ,½,¢□ê□‡,Í LHA.EXE ,É•t'® ,ìfefLfxfg,â UNLHA32.DLL
,É•t'® ,ì COMMAND.TXT ,đŽQ□Æ,μ,Ä,,³/₄,³,¢□B

'èĒ^³k

, ,ç, ©, ¶, ß"o~^, μ, ½ftf@fCf<, ì^³k, ðs, ç, Ü, ·B
fojbfNfAfbfv, È, Ç, Å"~, ¶^³k^—, ðs, ç, ½, çê¶, È, ÇA, ±, ìfjff... [, ðŽÀs, , , é, ±, Æ, Å-^
%oñA"~, ¶^—(³k), ð, , ±, È, !, Ü, ·B



Še€-Ú, ìfwf<fv, ð•Ž!, , , é, É, ÍC-Ú"l, ì€-Ú, ðfNfŠfbfN, μ, Ä, , ¾, ³, çB

fEfCf<fXfXfLfff“

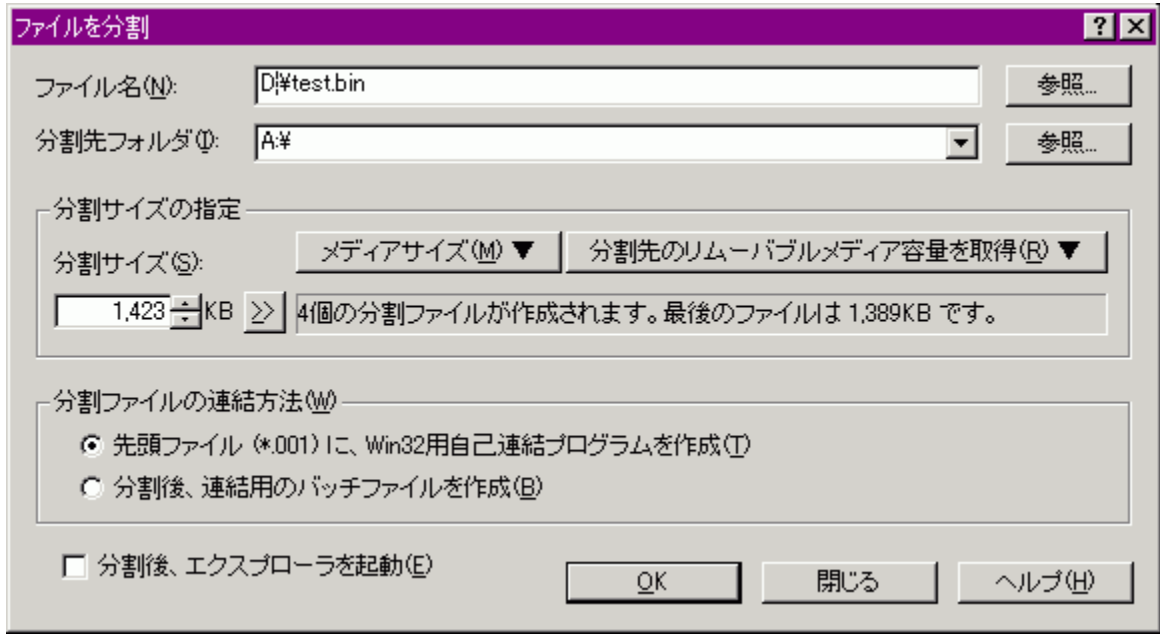
Šù‘¶□‘ĀÉÉ, ìfEfCf<fXf`fFfbfN, ð□s, ç, Ü, ·□B

, ±, ìf□fjf...□[, ©, çfEfCf<fXf`fFfbfN, ð□s, π^x, É, Í□uflfvfVf†f“□v-□u‘¼fAfvfŠ, Æ, ì~A“®□v, ©, ç—\
, ß□wfEfCf<fXfXfLfff“fvf□fOf%of€□x, ðŽw’è, μ, Ä, ”, ç, Ä, , ¾, ¾, ç□B

fRf}f“fhf%ofCf“, É, Â, ç, Ä, ÌfEfCf<fXfXfLfff“fvf□fOf%of€, ìfwf<fv, â•t’®, ìfefLfXfg, ðŽQ□Æ, μ, Ä, , ¾, ¾, ç□B

ftf@fCf<,δ•ªŠ,,

Žw'è,μ,½ftf@fCf<,δŽw'è,μ,½fTfCfY (128KB^È□ā) ,Å•ªŠ,,,μ,Ü,·□B



•ªŠ,,,μ,½,¢ftf@fCf<,δ□uŽQ□Æ□v, ©,ç'l'δ,·,é, ©□AfGfNfXfvf□□lf
 %□□ā,·ªŠ,,,μ,½,¢ftf@fCf<,δ'l'δ,μ,Äf_fCfAf□fO□ā,Éfhf%□fbfO□·fhf□fbfv,μ,Ä,-
 ,¾,¾,¢□B,Ü,½□A•ªŠ,,□æftfHf<f_,àfGfNfXfvf□□lf%□□ā, ©,çf_fCfAf□fO□ā,Éfhf
 %□fbfO□·fhf□fbfv,ÅŽw'è,Å,«,Ü,·□B

□y,e,c (,Ü,½,í,l,n) ,Ö,ì~A'±fRfs□□z

fRfs□□□æ,ðftf□fbfs□□fffBfXfNfhf%□fCfu,ÉŽw'è,μ,½□é□#,í□A•ªŠ,,fTfCfY,ì'ā,«,¾,Æ"~,¶—e—
 È,ì,e,c, ©□A,à,μ,,í,»è,æ,è'ā,«,¢—e—È,ÄftfH□□f}fbfg,¾,è,½,e,c,δ•K—v—#□"•ª—p^Ó,μ,Ä
 %□□,¾,¾,¢□B(•K—v—#□",í_fCfAf□fO,É•Ž!¾,¾,è,Ü,·)
 —p^Ó,Å,«,½,¢□u,n,j□v{f^f",δ%□ÿ,μ,Ä□ACEā,ìŽwŽ!,É,μ,½,ª,Á,ÄfRfs□□,μ,Ä
 %□□,¾,¾,¢□B•ªŠ,,,¾,è,½ftf@fCf<,ª'S,Å,e,c,ÉfRfs□□,¾,è,Ü,·□B

□i□æ"ªftf@fCf<(*.001) ,É□AWin32—p,ìŽ©CEÈ~ACE<fvf□fOf%□f€,δ□ì□~

□æ"ªftf@fCf<,É '*_001.exe' ,Æ,μ,½ftf@fCf<-¾,Å Win32—p,ìŽ©CEÈ~ACE<fvf□fOf%□f€
 ,δ□ì□~,μ,Ü,·□B
 •ªŠ,,ftf@fCf<,δ•œCE³,μ,½,¢□é□#,É,í□A'*_001.exe' ,íftf@fCf<,δŽÅ□s,μ,Ä,-
 ,¾,¾,¢□B'S,Ä,ì•ªŠ,,ftf@fCf<,ì~ACE<,ª,±,È,í,è,Ü,·□B
 ~ACE<□æftfHf<f_,àŽw'è,·,é,±
 ,Æ,ª,Å,«□A,Ü,½□Aftf@fCf<,ì'@□«,âf^fCf€fXf^f"fv,à•œCE³,Å,«,Ä□w~ACE<fRfs□□—
 p,ífofbf ftf@fCf<□x,ìé□#,æ,è,±,¿,ç,ì·û-@,Å•œCE³,·,é,±,Æ,δ, "Š©,ß,μ,Ü,·□B

□i•ªŠ,,CEā□A~ACE<fRfs□□—p,ífofbf`ftf@fCf<,δ□ì□~

•ªŠ,,fRfs□□CEā□A□ì□~,μ,½•ªŠ,,ftf@fCf<,δ~ACE<,·,é^x,ífofbf`ftf@fCf<,δ□ì□~,μ,Ü,·□BfRfs□□□æ,ª,
 e,c,ìé□#,É,í□A□ACEā,ì,e,c,Éfofbf`ftf@fCf<,δ□ì□~,μ,Ü,·□B

□! □ì□¬,μ,½•ªŠ,,ftf@fCf<,ìŠg'£Žq,í□A*.001□`*.999,Æ,È,è,Û,·□B'*',íŠg'£Žq,ð□È,¢
,½□'ÆÉ,ìftf@fCf<-¼,Æ,È,è,Û,·□B

□! •ªŠ,,ftf@fCf<fTfCfY,ìŽw'èfGfffBf^f{fbfNfX,ì
%oE~e,ìfXfsf“f{f^f“,ðfNfŠfbfN,·,é,Æftf@fCf<fTfCfY,ª□ã%oo,μ,Û,·□BSHIFT fL□[,ð
%oÿ,μ,È,ª,çfNfŠfbfN,·,é,Æ 1MB'P^É,Å□ã%oo,μ□ACTRL fL□[,ð%oÿ,μ,È,ª,çfNfŠfbfN,·,é,Æ
100KB'P^É,Å□ã%oo,μ,Û,·□B%ooÆÀ,í 128KB□A□ãÆÀ,í 3.99GB ,Û,Å,Å,·□B4GB
^È□ã,ìŽw'è,Å,«,Û,¹,ñ□B

Še□€-Ú,ìfwf<fv,ð•\Ž!,·,é,É,í□A□uftf@fCf<,ð•ªŠ,,□vf_fCfAf□fOf{fbfNfX,ð<N“® ,μ,½□ó'Ô,Å%oE□ã,ì
□H ,ðfNfŠfbfN,μ□A-Ú“ì,ì□€-Ú,ðfNfŠfbfN,μ,Å,,¾,¾,¾,ç□B

fNfŠfbfvf{[]fh"àfefLfXfgff[]f^,ìfffR[]fh

UUEncode (XXEncode) ,© Base64 ftfH[]f}fbfg,ìfefLfXfg,ŠÜ,Ü,é,Ä,ç
,éfNfŠfbfvf{[]fh"à,ìfefLfXfgff[]f^,ðfffR[]fh,μ,Û,·[]B

•iš·[]æ,É"-¼ftf@fCf<,Š'¶[]Ý,·,é,Æ,«,Í[]A[]ã[]',«,í,¹,,É "B64OUT (1).DAT"
"™",Æ[]V<K,Éftf@fCf<,ð[]ì[]¬,μ[]A"WSJ,μ,Û,·[]B

UUEncode (XXEncode) Ć`Ž®,ì[]ê[]‡,Í begin[]`end ,Ü,Â[]AMIME (Base64)
Ć`Ž®,ì[]ê[]‡,Ífwfbf_Ü,Â,ðŠÜ,ñ,¾,à,ì,ðfNfŠfbfvf{[]fh,ÉfRfs[][,μ,ÄŽÀ[]s,μ,Ä,,¾,¾,ç[]B

[] MIME (Base64) Ć`Ž®,ì[]ê[]‡,Ífwfbf_Éftf@fCf<-¼,ŠĆ©,Â,©,ç,È,ç
,ÆfffR[]fh,Â,«,Ü,¹,ñ[]B

fc[f<fo[l,đfjXf^f}fCfY,·,é

□y—~—p,Å,«,éf{f^f“(V)□z
□@-čŽg—p,lf□[f<fo□[f{f^f“,lfŠXfg,Å,·□B{f^f“,lfhf%fbfO□·fhf□fbfv,Å,à^Ú“® ,Å,«,Ü,·□B

□yfc□[f<fo□[lf{f^f“(T)□z
□@CE»□Y□AZg—p(·\Ž!),μ,Ä,č,é,lf□[f<fo□[f{f^f“fŠXfg,Å,·□B{f^f“,lfhf
%fbfO□·fhf□fbfv,Å,à^Ú“® ,Å,«,Ü,·□B

□y’C%Á(A)□z
□@□u—~—p,Å,«,éf{f^f“(V)□v,Å’I’δ,μ,½f{f^f“,δ□ufc□[f<fo□[□v,É’C%Á,μ,Ü,·□B

□y□í□œ(R)□z
□@□ufc□[f<fo□[lf{f^f“(T)□v,Å’I’δ,μ,½f{f^f“,δ□u—~—p,Å,«,éf{f^f“(V)□v,É^Ú“® ,μ□A·\Ž!,μ,È,č
,æ,π,É,μ,Ü,·□B

□y·Â,¶,é(C)□z
□@CE»□Y,ì□ufc□[f<fo□[lf{f^f“(T)□v,Å□Y’è,δ<L~^,μ□Af_fCfAf□fOf{fbfNfX,δ·Â,¶,Ü,·□B

□yfŠfZfbfg(E)□z
□@f{f^f“,i”z’u,δ·W□€,ì□Y’è,É-β,μ,Ü,·□B

fGfNfXfvf [f%oo, ð] fff... [u'CEÉi -v, ©, ç'CEÉftf@fCf<, ð] i -
i'CEÉftf@fCf<, ð] i - , μ, Ü, ·B

YftfHf<f_¼(N)
i - , é [æftfHf<f_ðŽw'è, μ, Ü, ·B
i - , é [æ, lftfHf<f_¼, ífhf fbfvf_fEf" fŠXfg, Ö—š—ð] , Q, O, Ü, Å<L% , μ, Ü, ·B

Yftf@fCf<-¼(N)
i - , , é [A'CEÉftf@fCf<-¼, ðŽw'è, μ, Ü, ·B
i - , μ, ½'CEÉftf@fCf<-¼, í, ífhf fbfvf_fEf" fŠXfg, Ö—š—ð] , Q, O, Ü, Å<L% , μ, Ü, ·B

YlfvfVfjff"
i'CEÉ<æ'É, ð] Y'è, â [ACE`Ž®·ÉCEÅ—L, ðffftfHf<fg] Y'è, ð, , ±, È, , Ü, ·B

Y] i - , μ, ½'CEÉ, ðŠj,
i'CEÉ] i - CEã [A] i - , μ, ½'CEÉ, ð Explzh , ©, çŠj, «, Ü, ·B

YCE³ftf@fCf<, ð] i [æ
i'CEÉ] i - CEã [A^³] kCE³ftf@fCf<, ð, ², Y" , Ö'Ú" ®, μ, Ü, ·B (², Y" CEo—R, μ, ½, , È, ç [ê] †, [u, ², Y" , É"
ü, è, , , É [í] [œ] [v, ð] f fbfN, μ, Ü, ·)

Y'CEÉ, ð·aŠ, ·Ü'¶
i'CEÉ] i - CEã [A] i - , μ, ½'CEÉ, ð [uftf@fCf<, ð·aŠ, ·] vf_fCfAf] fOf {fbfNfX, a·\Ž|, ³, è, Ü, ·B

Y'CEÉ, ð] ³"— [«, ð] CEY] , ð, , é
i - CEã, ð] 'CEÉ, É'í, μ [A] ³, μ, ð] i - , Å, «, Ä, ç, é, © [u] CRC , ð] f fbfN] v, ð] s, ç, Ü, ·B

YŽY%ñ, ©, ç, ±, ð] ³ [kCEã, ð] ® [i] Y'è, ðffftfHf<fg, AE, , é [B
, ±, ð] f fbfN, ð"ü, è, é, ±, AE, Å [A, ±, ð] u^³ [kCEã, ð] ® [i] v] fOf [fv, ÅŽw'è, μ, ½] Y'è, ð·Ü'¶, μ [AZŽ
%ñ^³ [kŽŽ, ð] u^³ [kCEã, ð] ® [i] v" à] Y'è, ðffftfHf<fg, AE, μ, Ü, ·B

YŠe'CEÉCE`Ž®, ð] Y'èf^fu, í, ÉŠj, ç, Ä·\Ž|, , é
ffftfHf<fg, Å, ð] Se'CEÉCE`Ž®, ð] Y'èf^fu, ð·\Ž|, ¹, , , Éf_fCfAf] fO, ð·\Ž|, μ, Ü, ·, a, ±, ð] f fbfN, ð"ü, è, é, ±
, AE, ÅSe'CEÉCE`Ž®, ð] Y'èf^fu, ð] í, É·\Ž|, , é, æ, x, É, È, è, Ü, ·B
f fbfN, ð"ü, è, Ä, ç, È, ç [ê] †, Å [AfCfRf", Å·\Ž|, ³, è, Ä, ç
, é'ÉŠO, ð] 'CEÉ, ð] i - , μ, ½, ç [ê] †, É, ð] AfCfRf", ð] NfŠfbfN, μ, Ä, , ¾, ¾, ç [B

Y] ; %ñŽw'è, μ, Ä] i - , μ, ½'CEÉCE`Ž®, ðffftfHf<fg, É, , é
, ±, ð] f fbfN, ð"ü, è, é, ±, AE, ÅŽY
%ñ, ð] ³ [kŽŽ, É, ð] ; %ñ^³ [k, μ, ½] CE`Ž®, a] fftfHf<fg, ð] 'CEÉCE`Ž®, AE, È, è, Ü, ·B^³ [kfCEfxf<, Ü, Å, í<L
% , μ, Ü, ¹, ñ, ð] Å^³ [kfCEfxf<, ðffftfHf<fg'í, ð·í] X, μ, ½, ç [ê] †, É, ð] u] lfvfVfjff" [vf] {f^f", ©, ç^³ [kfCEfxf<
^³ [kf, [fh], ð·í] X, , é, æ, x, É, μ, Ä, , ¾, ¾, ç [B

y'Óz
**DOS"Å, ð] SFX, â WIN16"ÅSFX, ð] i - , , é [ê] †, í [A] i - , , é [CEÉ-¼, í
8.3CE`Ž®, ðŽw'è, μ, Ä, , ¾, ¾, ç [B**

ŠÖ~A [€-Ú] [FLHA-SFX, ð] i - Žžf_fCfAf] fOf {fbfNfX, ð] Se [€-Ú, ð] à-¾

ŠÖ~A€-ÚFCAB-SFX.ìi-Žž_fCfAfOf{fbfNfX,İŠe€-Ú,ìà-¾

%EfnfšbfNf fjjf...[]

fjf...[] [ä,lf}fEfx,ì%EfNfšbfN'€[] ,Åó<μ,É%ž,¶A—lX,Èf|fbfvfAfbfvf fjjf...[] ,^aŽ!,³,ê,Ü,·B
fAfcfef€ä,Å%EfNfšbfN,μ,½ê[] ‡,É,íufGfNfXfvf[] [f%o,ì%EfNfšbfNf fjjf...[] ,Æ“ ,¶,à,ìv,Å·\
Ž!,μAfcfef€,^{a-3},čŽž,âfAfcfef€,İŠO,Å%EfNfšbfN,μ,½Žž,ÍŽâ,Éftf@fCf<f fjjf...[] ,đ·Ž!,μ,Ü,·B

fAfcfef€ä,Å,ì%EfNfšbfNf fjjf...[] ,Å,í[] ACTRL fL[] ,đ%Ÿ,μ,È,^a,ç'€[] ,·,éŽ-,Å Explzh
“ÆŽ©,lf fjjf...[] [(Žâ,É·Ö[] Wf fjjf...[]),đ·Ž!,·,éŽ-,^a,Å,«,Ü,·B,±,lf fjjf...[] ,í[] A[] uflfvfVf#f“[] v-
[] u,»,ì¹/₄[] v,Å·ì[] X%oÅ“\,Å,·B

fGfNfXfvf[]f%o@”\Šg’£ifVfFf<fGfNfXfef“fVf#f”[]j

fCf“fXfg[]f<Žž,lfjfvfVf#f” ,Å[]A[]ufVfFf<Šg’£,ðŽg,æ[]v,ð’l’ð,µ,ÄfCf“fXfg[]f<,·,é,Æ[]A<@”\Šg’£
,µ,½fGfNfXfvf[]f%o,lfRf“fefLfXfgf[]ffj...[][, ©,ç[]‘CEÉ’€[]i,°[]s,|,é,æ,æ,É,È,è,Ü,·[]B
[]fCf“fXfg[]f<‘CEä,[]AExplzh ,lf[]ffj...[][,l[]\Ž:] - [lfjfvfVf#f”] - [fVfFf<fGfNfXfef“fVf#f”] -
[[]Ú[]×[]Ý’è], ©,ç[]Ý’è,ì·ì[]X,ð,“,±,É,|,Ü,·[]B

fGfNfXfvf[]f%o,ì<@”\,ðŠg’£,·,é,à,ì,Æ,µ,Ä[]AZÿ,ì,æ,æ,È,à,ì,ª, ,è,Ü,·[]B

[]Context-Menu Extensions (fGfNfXfvf[]f%o[]ä,lf[]f@fCf<’l’ðŽž%oEfNfŠfbfNf[]ffj...[][])

[]ÿ[]u’;Žž%oð“€(E)[]v

[]‘CEÉftf@fCf<,ì%oð“€,ð[]s,ç,Ü,·[]B
•;[]”[]‘CEÉ,ð’l’ð,µ,Ä,ç,é[]ê[]#,É,[]u~A’±%oð“€(R)[]v,Æf[]ffj...[][,ª,ï,í,è,Ü,·,ì,Å[]A•;[]”[]‘CEÉ,ì%oð“€
,ð^è<C,É,“,±,É,|,Ü,·[]B

[]ÿ[]u[]‘CEÉ[]ì[]~(A)[]v

[]‘CEÉ,ð[]ì[]~,µ,Ü,·[]B
LZH/LHaCE`Ž®(SFX)[]AZIP/ZIPCE`Ž®(SFX)[]ATAR/GZIP/GZ[]‘CEÉ[]ACAB/CABŽ©CEÈ
%oð“€[]‘CEÉ[]ABZA/GZACE`Ž®[]AYZ1(SFX)[]AGCA,ì[]‘CEÉ,ð[]ì[]~,Å,«,Ü,·[]B

[]ÿ[]u,±,±,É[]‘CEÉ,ð[]ì[]~(P)[]v[]if[]fbfvfAfbfvf[]ffj...[][]j

ftf@fCf<(•;[]”[]%oÄ),ð Ctrl fL[][,ð%oÝ,µ,É,ª,ç%oEfNfŠfbfN,·,éŽ-,Å·\Ž|,µ,Ü,·[]B
ffjCEf“fgftfHf<f_,Ö[]‘CEÉ,ð[]ì[]~,µ,Ü,·[]B
+SHIFT fL[][,Å^³[]kCE³ftf@fCf<,ð,²,Ý” ,Ö^Ú“® ,µ,Ü,·[]B

[]ÿ[]uISH []ì[]~(I)[]v

ISH ftf@fCf<,ð[]ì[]~,µ,Ü,·[]B
-\\,ß[]A[]ufjfvfVf#f”[]v[]”[]ufVfFf<fGfNfXfef“fVf#f”[]v, ©,ç[]u,h,r,g,ì[]Ý’è[]v,Å[]Ý’è,ð,µ,Ä,“,ç,Ä,-
,¾,¾,ç[]B

[]ÿ[]uUUE/MIME fffR[]fh[]v

UUEncode (XXEncode) ,â Base64
ftfH[]f[]fbfg,lfefLfXfg,ðŠÚ,pfefLfXfgftf@fCf<,ðffR[]fh,µ,Ü,·[]B

[]ÿ[]uftf@fCf<,ð·ªŠ,,(V)[]v

ftf@fCf<,ð”C^ÖftfCfY,É·ªŠ,,µ,Ü,·[]B

[]ÿ[]u[]‘CEÉ,ì[]³“-[]«CEÿ[] (H)[]v

[]‘CEÉftf@fCf<,ì[]³“-[]«,ìCEÿ[], ,ð,“,±,É,ç,Ü,·[]B

[]ÿ[]u[]‘CEÉ“àfŠfXfg·\Ž!(D)[]v

‘l’ð,µ,½[]‘CEÉftf@fCf<,ìŠi”[ftf@fCf<fŠfXfg,ð·\Ž|,µ,Ü,·[]B

[]ÿ[]u[]‘CEÉ“àfŠfXfg,ðfNfŠfbfNf{[]fh,Ö(B)[]v

[]‘CEÉftf@fCf<,ð Ctrl fL[][,ð%oÝ,µ,É,ª,ç%oEfNfŠfbfN,·,éŽ-,Å·\Ž|,µ,Ü,·[]B
‘l’ð[]‘CEÉ,lf[]f@fCf<fŠfXfg,ðfNfŠfbfvf{[]fh,ÖfRfs[][,µ,Ü,·[]B

[]ÿ[]u[]‘CEÉ“à[]Ú[]×fŠfXfg·\Ž!(D)[]v

[]‘CEÉftf@fCf<,ð Shift fL[][,ð%oÝ,µ,É,ª,ç%oEfNfŠfbfN,·,éŽ-,Å·\Ž|,µ,Ü,·[]B
‘l’ð,µ,½[]‘CEÉftf@fCf<,ì[]Ú[]×,ÉŠi”[ftf@fCf<fŠfXfg,ð·\Ž|,µ,Ü,·[]B

[]ÿ[]ufZfbfgfAfbfvŽÀ[]s(X)[]v

□ufjfvfVf#f"□v-□u'¼fAfvfŠ,Æ,İ~A" @□v-
□ufZfbfgfAfbfvZÄ□sŽž,İŽÄ□sftf@fCf<□v,ÅŽw'è,μ,½ftf@fCf<,ª□'CEÉ"à,ÉŠÜ,Ü,è,é□è□#□A□'CEÉ"à
,İ'S,Ä,İftf@fCf<,ð□i<ÆftfHf<f_,É%øđ"€,μ□A,»,İŽw'è,ª,è,½ftf@fCf<,ðŽÄ□s,μ,Ü,·□B(ffftfHf<fg,Ä,İ
setup.exe;install.exe;setup*.exe;*setup.exe;inst*.exe;*inst.exe ,İftf@fCf<,ðCEŸ□ð,μ□A
%ø½,è,©,ªSÜ,Ü,è,é□è□#,É,İ,YŽÄ□s,ª,è,Ü,·)

□Ÿ□uMS-EXPAND CE`Ž®,İ•œCE³□v
Microsoftftf@fCf<^³□kft□[fefBfŠfefB 'COMPRESS.EXE' ,ðŽg—
p,μ,Ä^³□k,ª,è,½□'CEÉ"à,İftf@fCf<,ð" C^Ó,İftfHf<f_,É•œCE³,μ,Ü,·□B
(□[Šg'£Žq,ª□AEX_, HL_, TX_, ,l,æ,µ,Èftf@fCf<,Ä,·)

□Ÿ□uZIP□'CEÉ,İ□C•œ□v
ZIP□'CEÉ□C•œ,μ,Ü,·□B%øđ"€,Ä,«,È,¢%øó,è,½□'CEÉ,É—LCEø,È□è□#,à, ,è,Ü,·□B

□Ÿ□uExplzh ,©,çŠJ,□v
□'CEÉftf@fCf<,ð Explzh ,©,çŠJ,«,Ü,·□B
,Ç,İ,æ,µ,ÉŠg'£Žq,Ä,à□'CEÉ,Æ" FŽ~,Ä,«,è,İŠJ,Ž-,ª,Ä,«,Ü,·□B

□; Drag and drop Context-Menu Extensions (%øEf}fEfX,Äfhf %øfbfO□•fhf□fbfv,μ,½□è□Š,É,Ä,é□fjf...□[)

□Ÿ□u,±,±,É%øđ"€(E)□v
□'CEÉftf@fCf<□i'P^è□j,ð%øEf}fEfX,Äfhf%øfbfO□•fhf□fbfv,μ,½□è□Š,Ö%øđ"€,μ,Ü,·□B

□Ÿ□u,±,±,ÉftfHf<f_,ð□i□¬,μ,Ä%øđ"€(K)□v
fhf□fbfv□æ,Ö□'CEÉ-¼,ÄftfHf<f_,ð□i□¬,μ,Ä,»,±,Ö%øđ"€,μ,Ü,·□B
+CTRL fL□[,ð%øŸ,μ,È,ª,ç,Ä□Afo□[fWf#f""Ö□†,ð□É,¢,½□'CEÉ-¼,ÄftfHf<f_,ð□i□¬,Ä,«□A
+SHIFT fL□[,ð%øŸ,μ,È,ª,ç,Ä□A%øđ"€□æftfHf<f_-¼"ü—İf_fCfAf□fOf{fbfNfX,ð•\Ž!,μ,Ü,·□B

□Ÿ□u,±,±,É~A'±%øđ"€(E)□v
•i□",İ□'CEÉftf@fCf<,ð%øEf}fEfX,Äfhf%øfbfO□•fhf□fbfv,μ,½□è□Š,Ö%øđ"€,μ,Ü,·□B

□Ÿ□u,±,±,ÉftfHf<f_,ð□i□¬,μ,Ä~A'±%øđ"€(K)□v
•i□",İ□'CEÉftf@fCf<,ð□'CEÉ-¼-^,ÉftfHf<f_,ð□i□¬,μ,Ä%øđ"€,μ,Ü,·□B

□Ÿ□u,±,±,É'xxx.xxx',ð□i□¬(H)□v
ftf@fCf<,ð%øEf}fEfX,Äfhf%øfbfO□•fhf□fbfv,μ,½□è□Š,Ö□u□'CEÉ□i□¬□vf_fCfAf□fO,ð•\
Ž!,ª,È□AfffHf<fg,ÄŽw'è,ª,è,½□'CEÉ,ð□i□¬,μ,Ü,·□B
Shift fL□[,ð%øŸ,μ,È,ª,çfhf%øfbfO□•fhf□fbfv,·,é,±,Æ,Ä□A^³□kCE³ftf@fCf<,ð,ª,Ÿ" ,Ö^Ú" @,μ,Ü,·□B

□;□ufjfvfVf#f"□v-□ufVfF<fGfNfXfef"fvf#f"□v,Ä,æ,Žg,µffftfHf<fg,İ□'CEÉCE`Ž®,ðŽw'è,μ,Ä,",-
,Æ•Ö—~,Ä,·□B

□Ÿ□u,±,±,É□'CEÉ,ð□i□¬(P)□v□if|fbfvfAfbfvf□fjf...□[□j
ftfuf□fjf...□[["à,İf'fFfbfNf□fjf...□[,©,ç□u^Ä□†%ø»□'CEÉ□v□A□uŽ©CEÉ
%øđ"€□'CEÉ□v□A□uftf@fCf<CEÄ•É,İ□'CEÉ%ø»□v,İŽw'è,ª,Ä,«,Ü,·□B'İ
%øž□'CEÉ,İ'S,Ä,İ□'CEÉ,ðfjCEf"fgftfHf<f_,Ö□i□¬,Ä,«,Ü,·□B

+SHIFT fL□[,Ä^³□kCE³ftf@fCf<,ð,ª,Ÿ" ,Ö^Ú" @,μ,Ü,·□B

Drop Target Extensions (fhf fbvf ^ [fQfbfg <@ " \)

Y*.LZH (ZIP) ftf@fCf<,dfhf fbvf ^ [fQfbfg,É,.,é
 fCf“fXfg [f<žž,É LZH (ZIP) ,İS~A•t, ,àžw'è,μ,ÁfCf“fXfg [f<,μ,½ê#AfGfNfXfvf [f
 %“à,İ'S,Á,İ LZH (ZIP) ftf@fCf<,dfhf fbvf ^ [fQfbfg,É,μAfGfNfXfvf [f%“à,Á LZH (ZIP)
 ,lfAfCfRf“ ,Éfhf%fbfO•fhf fbvf,μ,Áftf@fCf<,đ'Ç%Á^³k, ,é,±,Æ,ª,Á,« ,é,æ,α,É,È,è,Ü, ·B
 +SHIFT fL [,Á^³kCE³ftf@fCf<iœ,Á,«A,Ü,½%E,lf}fEfX,Áfhf fbvf, ,é,Æ^³kS®-¹CEä,É
 Explzh ,©,çŽ“®“İ,ÉS),Z-,ª,Á,« ,Ü, ·B
 Zip CEÉ,İê# ,É,İ +CTRL fL [,Á^Á+%»'CEÉ,đi-i'Ç%Áj,Á,« ,Ü, ·B

Send To Extensions (Send To %ođ“€E³kfGfNfXfef“fvfj“)



PowerToys SendTo-X ,Ý,½,ç,Éu'—,évfjff... [,É'Ç%Á,Á,« ,éfGfNfXfef“fvfj“ ,Á, ·B u'—
 ,évfjff... [,Éu%ođ“€v,Æu^³k vjff... [,đ'Ç%Á,Á,« ,Ü, ·B iu^³k v,İ%EfNfSfbfNfjff...
 [,İ 'CEÉi(A) ,Æ“ ,İ,Á, ·j%ođ“€fGfNfXfef“fvfj“ ,Á,İ•j“‘CEÉ,İ'A±%ođ“€,à%Á“\,Á, ·B
 fffXfNfgfbfv,É'u,ç,½ê# ,İAfAfCfRf“ (^³k ^%ođ“€) ,İä,É'¼ÜAfhf%fbfO•fhf fbvf, ,éž-
 ,Á^³kE%ođ“€,ª,Á,« ,Ü, ·B

fAfCfRf“ ,đf_fuf<fNfSfbfN, ,éž-,Á%o<Lf_fCfAfO,đ•ž!,μ,Ü, ·B



Še€-Ú,lfwf<fv,đ•ž!, ,é,É,İC-Ú“İ,İ€-Ú,đfNfSfbfN,μ,Á,,¾,³,çB

UUDecode, MIME(Base64) fffR[fh<@"\

UUEncode (XXEncode) , © Base64 ftfH[f]fbfg, ìfefLfxfg, ŠÜ, Ü, ê, éftf@fCf<, ðffR[fh, µ, Ü, ·B

[UU (XX) , Å, Í begin [` end [s, Ü, ÅAbase64 , Å, Í filename="xxx" , ŠÜ, ñ, ¼, à, ì, ðŽw'è, µ, Ä, -
, ¾, ³, çB

fRf}f"fhf%ofCf" , ©, çA

—á[Fc:\Program Files\Explzh\Explzh.exe /d "c:\test.uue"

,Æ, µ, Ä, àffR[fh, Å, «, Ü, ·B

y'^Óz

, ±, ì<@"\, ðfGfNfxfvf[f%oo, ìf[fjf... [, ©, çŽÀ[s, ·, é, É, ÍufIfvfvf#f"v-ufVfFf<fGfNfxfef"fvf#f"v-
uUUE/MIME fffR[fh, ðfGfNfxfvf[f%oo, ìf[fjf...

[, É"ü, ê, év, Éf`fFbfN, ð"ü, ê, ÄAfVfFf<fGfNfxfef"fvf#f"ffR[fh<@"\, ð—LCEø, É, µ, Ä, ·, •K—v, ¾, , è,
Ü, ·B

,»,ì¼,ì•Ö—~,È<@”\ (<y,Ñ□A%oB,μ<Z)
,»,ì¼□AŠo,!,Ä,“,ÆE<□\-ð,É—§,Â<@”\ (%oB,μ<@”\)

□ŸfVf#□[fgjfbfgfL□ [CTRL + SHIFT + V□Ÿ
fNfSfbfvf{□[fhflfufWfFfNfg“à,É□‘CEÉftf@fCf<,a, ,é,Æ’Êí,í CTRL+V ,Á“\,è•t, -,É,È,Á,Ä,μ,Ü,ç
,Ü,.,a□CTRL+SHIFT+V ,Á,í□‘CEÉ“à,ì•\Z!,ð,μ,Ü,.,□B

□Ÿf<□[fgftfHf<f_ ,© ,ç%oEf}fEfX,Áfhf%o)fbfO□•fhf□fbfv□Ÿ
Explzh,lfcfS□[frf...□[.lf<□[fg,ð’ì’ð,μ,Á%oEf}fEfX,ÁfGfNfXfvf□□[f%o,Öfhf
%o)fbfO□•fhf□fbfv,.,é,Æ□Afhf□fbfv□æ,É□‘CEÉ,lfrfs□[. ,©□‘CEÉ,lfvf#□[fgjfbfg,ð□□- ,Á,«,Ü,.,□B

□ŸExplzh ,Ö CTRL fL□[,ð%oŸ,μ,È, a,çfhf%o)fbfO□•fhf□fbfv□Ÿ
fGfNfXfvf□□[f%o, ,ç LHaE`Z@ ,ì□‘CEÉ,ð’ì’ð,μ□AExplzh ,Ö CTRL fL□[,ð%oŸ,μ,È, a,çfhf
%o)fbfO□•fhf□fbfv,.,é,Æ□‘CEÉ,ì~ACE<,ð,“,±,É,ç,Ü,.,□B(LHaE`Z@ ,ì□‘CEÉ“~Zm,ì,Ÿ)
•aŠ,,,³,è,½ftf@fCf<,ì~ACE<,Æ,í^á,ç,Ü,.,ì,Á^□^Ó,μ,Ä,,¾,¾,ç□B

□yZip□‘CEÉ,Ö,c□•,c,ÁfpfXf□□[fh•t^³□k□z
,Ü,½□AZip □‘CEÉ,Ö,ì Ctrl fL□[,ð%oŸ,μ,È, a,ç,lfhf%o)fbfO□•fhf□fbfv(‘Ç%oÁ)^³□k,Á,í□A‘Ç
%oÁftf@fCf<,É,»,è,¼,è^à,Á,½fpfXf□□[fh,ðŠ|, -,Ä^³□k,.,é,±,Æ,à%oÁ“\,Á,.,□B
,Ü,½□AfGfNfXfvf□□[f%o□ã,ì ZIPfAfCfRf“□ã,Ö CTRLfL□[,ð%oŸ,μ,È, a,çftf@fCf<,ð,c□•,.,éŽ-
,Á,à,.,x,Á,ì‘Ç%oÁftf@fCf<,ÉfpfXf□□[fh,ð,©, -,é,±,Æ, a,Á,«,Ü,.,□B
,.,ç,©,¶,β□Alflfvfvf#”] - [^³□kŽžflfvfvf#”] - [ZIP] ,Á□AftftfHf<fg,lfpfXf□□[fh,ðŽw’è,μ,Ä,.,-
,Æ□AfpfXf□□[fh,ì“ü—í,ð□È—a,Á,«,Á□X,É•Ö—~,Á,.,□B

□Ÿ□{f}fEfXf_fuf<fNfŠfbfN,ÁãŠK’w,lfthfHf<f_ ,Ö^U“ @□Ÿ
ftfHf<f_ ,àŠi”[,³,è,Ä,ç,é□‘CEÉ,Á,í□A%oE,lfrf...□[.lfAfCfef€^ÈŠO,ðf_fuf<fNfŠfbfN,.,éŽ-
,Á,Đ,Æ,Áã,lfthfHf<f_ ,Ö^U“ @ ,Á,«,Ü,.,□B

□Ÿ%oæ‘ceftf@fCf<,lfTf€flfCf<•\Z!□Ÿ
,a,l,oftf@fCf<,aŠi”[,³,è,Ä,ç,é□‘CEÉ,Á,í□A%oE,lfrf...□[.lfAfCfRf“ ,ð•\Z!□v ,Á
%oE,lfrf...□[ifŠfXfgfjf...□[□j,©,çTf€flfCf<•\Z! ,a,Á,«,Ü,.,□BftfCfy,ì^á,«,ç,a,l,oftf@fCf<,a,½,2,-
,³,ñ, ,é□ê□# ,ì•\Z! ,Ü,Á,EŽžŠO ,aŠ| ,© ,Á,Á,μ,Ü,ç,Ü,.,ì,Á^□^Ó,μ,Ä,,¾,¾,ç□B

□Ÿ□{f}lfc□[f<frf...□[,© ,ç□‘CEÉ-¼•ï□X□Ÿ
□{f}lfc□[f<frf...□[. ,ì□‘CEÉ-¼,lfc%ofxf<, ,ç□A□‘CEÉ-¼,ðŽ©—R,É•ì□X,.,éŽ-,a,Á,«,Ü,.,□B

□ŸufA□[fjfCfo DLL ,a<N“ @’t,Á,.,v,lf□fbfZ□[fW ,a□o,Ä□I—¹,Á,«,È,ç□I□Ÿ
fA□[fjfCfo DLL“ @□’t,É%o½,ç,©,lfGf%o□[,a”□¶,μ,ÁfAfvfŠ,ð□I—¹,μ,æ,x,Æ,μ,Ä,à□ufA□[fjfCfo
DLL ,a<N“ @’t,Á,.,v,lf□fbfZ□[fW ,a□o,Ä Explzh ,ð□I—¹,Á,«,È,çŽ-,a, ,è,Ü,.,□B
,»,ì—ì,É□ê□#□ALT ,Æ Delete fL□[,ð“~Žž,É%oŸ,μ,½CEã,É□I—¹,.,é,æ,x,É,.,è,î□A(x,Ü,.,ç, -,ì)
Explzh ,ì,Ÿ,ð•□‘É,É□I—¹,Á,«,é,©,à,μ,è,Ü,¹,ñ□B,»,è,Á,à□I—¹,Á,«,È,ç□ê□#,í□A□uCTRL + ALT +
DEL□v ,Á Windows ,²,Æ<□S□I—¹,.,é,μ,©□c,È,ç,Á,.,□c□B

Ÿu,±,±,ÉftfHf<f_ ,ðïï¬,µ,Ä%ø“€v,Ä,ì— <Z HŸ
u,±,±,ÉftfHf<f_ ,ðïï¬,µ,Ä%ø“€vffjff... [L,ðfGfNfXfvf [f%ø,lfjff... [L,Ö‘C
%øAŸ‘è,µ,½SÄ«« ,Ä,íAŸ‘CEÉ,ð%øEf}fEfX,ÄfGfNfXfvf [f%ø
,Öfhf}fbfv,·,é,Æ,» ,ìééS,ÖfRf“fefLfXfgfjff... [L,ð·\Z!,µ,Ü,·,ªA,» ,ìÜACTRL fL [L,ð
%øY,µ,È,ª,çfhf%øbfO•fhf}fbfv,µA·\Z!,ª,è,½fjff... [L“à,ìu,±,±
,ÉftfHf<f_ ,ðïï¬,µ,Ä%ø“€v,ð‘ì‘ð,·,é,ÆAŸ‘CEÉ-¼,lfO [fWfjff“”Ö†,ðÈ,ç,½ftfHf<f_-
¼,Ä,» ,±,Ö%øø“€ ,Ä,« ,Ü,·B,Ü,½AShift fL [L,ð%øY,µ,È,ª,ç“ ,fl,æ,» ,Éu,±,±
,ÉftfHf<f_ ,ðïï¬,µ,Ä%ø“€v,ð‘ì‘ð,·,é,Æïï¬æ,lfHf<f_-¼“ü—
lf_cAfjffof{fbjNfX,ð·\Z!,Ä,« ,Ü,·B

Ÿf^fCfjff<fo [L,lfAfCfRf“ ,©,ç,lfhf%øbfO•fhf}fbfvŸ
Explzh ,©,çŸ‘CEÉ,ðŠJ,ç,Ä,ç,éó‘Ô,ÄA%øæ-É,lf^fCfjff<fo [L,lfAfCfRf“ (ffCf“ftfCE [f€
,ìflã,lfAfCfRf“), ©,çfGfNfXfvf [f%ø,Öfhf%øbfO•fhf}fbfv%øø“€
,Ä,« ,Ü,·Bfl}fEfX,Ä,lfhf%øbfO•fhf}fbfv,Ä,íAŸ‘CEÉ-¼,ÄftfHf<f_ ,ðïï¬,µ,Ä%øø“€,Ä,«A
%øEf}fEfX,Ä,lfhf%øbfO•fhf}fbfv,Ä,lfGfNfXfvf [f%øã,Ä,lfhf%øbfO•fhf}fbfv,Æ“ ,fl,æ,»
,Éu,±,±,É%øø“€v“™ ,lfjff... [L,ð·\Z!,Ä,« ,Ü,·B

Ÿu%øø“€vfc [f<fo [L,ì—š—ð,ìíœ•û-@Ÿ
u%øø“€v,lf [f<fo [L,ì%øE~e,ìu%øv,©,ç·\Z!,Ä,« ,é%øø“€æftfHf<f_ ,ì—š—ðfjff... [L,íA
Delete f{f^f“ ,ð%øY,µ,È,ª,çfjff... [L€-U,ðfNfŠfbjN,·,éZ-,ÄfNfŠfbjN,µ,½ [L€-
U,ðíœ,Ä,« ,Ü,·B

ŸCTRL fL [L,ð%øY,µ,È,ª,ç%øEfNfŠfbjNfjff... [LŸ
Ÿ‘CEÉfŠXfg%øæ-É“à,Äšì” [ftf@fCf<,ð‘ì‘ð,µ,½Zž,È·\Z!,ª,è,é%øEfNfŠfbjNfjff...
 [L,Ä,lfGfNfXfvf [f%ø,ì%øEfNfŠfbjNfjff... [L,Æ“™” fffjff... [L,ð·\Z!,µ,Ü,·,ªACTRL fL [L,ð
%øY,µ,È,ª,ç%øEfNfŠfbjN,·,éZ-,Ä Explzh “ÆŽ©,lfjff... [L(Zä,È·ÖWfjff... [L),ð·\
Z!,·,éZ-,ª,Ä,« ,Ü,·B
 [L,±,ì“ [L,íAuflfvfvfjff“v-u,» ,ì¼v,Ä·íX%øÄ“\,Ä,·B

ŸSHIFT fL [L,ð%øY,µ,È,ª,çftf@f“fNfVfjff“fL [L,e,TŸ
Ÿ‘CEÉXV“úžž,ðšì” [ftf@fCf<,íAŸV,É†,í,¹,éZ-,ª,Ä,« ,Ü,·B
fA [fjffCfu,ð“ú·t,ÄŠÇ— [L,·,é,Æ,« ,É·Ö—~ ,È<@“\,Ä,·B

ŸfGfNfXfvf [f%øã,ì·i”Ÿ‘CEÉ,ð CTRL fL [L,ð%øY,µ,È,ª,ç%øEf}fEfX,ÄfGfNfXfvf [f
%øã,ì¼,lfHf<f_ ,Ö,c [L,cŸ
u,±,±,É%øø“€vffjff... [L,ðfGfNfXfvf [f%ø,lfjff... [L,Ö‘C
%øAŸ‘è,µ,½SÄ«« ,Ä,íAfGfNfXfvf [f%øã,ì·i”Ÿ‘CEÉ,ð%øEf}fEfX,Ä¼,lfHf<f_ ,Ö,c [L,c,·,éZ-
,Äu,±,±,ÉftfHf<f_ ,ðïï¬,µ,Ä~A‘±%øø“€vffjff... [L,ª·\Z!,ª,è,Ü,·,ªACTRL fL [L,ð%øY,µ,È,ª,ç
%øEf}fEfX,c [L,c,·,éZ-,Äu,±,±,É~A‘±%øø“€vffjff... [L,ð·\
Z!,µ,Ü,·B·i”Ÿ‘CEÉ,ðftfHf<f_ ,ðïï¬,·,é,±,Æ,È,íAŸ‘è,ìééS,Ö^èš±%øø“€,ðs,ç,½,çéé†,É·Ö
—~ ,È<@“\,Ä,·B

ŸfGfNfXfvf [f%øã,ì(·i”/P^è)ftf@fCf<,ð SHIFT fL [L,ð%øY,µ,È,ª,ç
%øEf}fEfX,Ä,c [L,cŸ
u,±,±,ÉxxxŸ‘CEÉ,ðïï¬-v,Ü,½,íu,±,±,Éftf@fCf<CEÄ·È,É XXXŸ‘CEÉ,ðïï¬-vffjff...
 [L,ðfGfNfXfvf [f%ø,lfjff... [L,Ö‘C%øAŸ‘è,µ,½SÄ«« ,Ä,íAfGfNfXfvf [f
%øã,ì(·i”/P^è)ftf@fCf<,ð%øEf}fEfX,Ä¼,lfHf<f_ ,Ö,c [L,c,·,éZ-,Äu,±,±,É
xxxŸ‘CEÉ,ðïï¬-vffjff... [L[A,Ü,½,íu,±,±,Éftf@fCf<CEÄ·È,É XXXŸ‘CEÉ,ðïï¬-vffjff... [L,ª·\

Ž,³,é,Ü,·,·,ªA**SHIFT fL**[,ð%Ÿ,µ,È,ª,ç%**Ef**]fEfX,c,·,·,éŽ-,Åu,±,±
É`xxx`**CEÉ**,ð`-**CEä**ACE³ftf@fCf<,ð`íœ`vf`fjf...[.ð·\
Ž,µ,Ü,·,·B`CEÉ`-CEäACE³ftf@fCf<,ð`íœ,µ,½,ç`é`#,É·Ö-~,È<@`\\,Å,·B

ŸGfNfXfvf`[f%ã,ì LZH/ZIP/(B)GZA fAfCfRf“,Ö CTRL fL[,ð%Ÿ,µ,È,ª,ç
%**Ef**]fEfX,Å,c,·,·c`Y

fCf`fXfg`[f<Žž,É`wfGfNfXfvf`[f%ã,ìV<K`-f`fjf...[.ÉLZH/ZIP/(B)GZA
V<Kftf@fCf<,ð`-x,ð-LCEø,É,µ,ÅfCf`fXfg`[f<,³,é,½ŠÅ<<,Å,Í LZH/ZIP/(B)GZA
fAfCfRf`[ã,Öftf@fCf<,ð,c,·,·,é,¾,~,Å^³`k,Å,«,é,æ,π,É,È,è,Ü,·,ªA,±,é,ð%**E**,lf}fEfX,ð
%Ÿ,µ,È,ª,çfAfCfRf`[ã,Öftf@fCf<,ð,c,·,·,éŽ-,ÅA^³`kŠ@-¹CEä,É`-³,é,½`CEÉ,ð Explzh
,©,çSj,,±,Æ,ª,Å,«,Ü,·B
Ši`[,³,é,½ftf@fCf<,ðŠm`F,µ,½,ç`é`#,É·Ö-~,È<@`\\,Å,·B

ŸRf}f`fhf%**fCf**“,©,ç·ªŠ,,ftf@fCf<,ð~ACE<,·,é(Ž©CEÈ~ACE<f,fWf...[f<,ì·É,ìŽg,ç·ù)Ÿ

,Ü,·AExplzh,ìftfHf<f_“à,É,·é "restore.dat",ð“K”-,ÉftfHf<f_ÖfRfs`[µ,Å%B,µ’@`«,ð
%ð`œ,µA"restore.exe",Æ-¼'O,ð·íX,µ,Å,,¾,¾,ç`B**restoredat**
,**íÚ”@,µ,½,è`íœ,µ,È,ç,Å,,¾,¾,ç`BŽ©CEÈ~ACE<ftf@fCf<,ª`-Å,«,È,,È,Á,Ä,µ,Ü,ç
,**Ü,·B**
ŽŸ,É "restore.exe",ð~ACE<,µ,½,çftf@fCf< ("xxx.001`xxx.0??",)ìE`Ž@)
,ì,·éftfHf<f_Ö^Ú”@,³,¹A**

restore.exe ~ACE<CEä,ìftf@fCf<-¼(xxx.Šg’£Žq) /-#`

,ÆfRf}f`fhf%**fCf**“,©,çŽÀ`s,µ,Ä,,¾,¾,ç`B(~ACE<CEä,ìftf@fCf<-¼,ìftf<fpfX,ÅŽw’è,·,é·K-v,í,
,è,Ü,¹,ñ)
fjCEf`fgftfHf<f_ðffftfHf<fg,É~ACE<Šm`F,ìftfHf<f_ìŽw’èf`fCfAf`fO,ª·\Ž,³,é,Ü,·,·,ì,Å[A,n,j]
f{f^f“,©,ç~ACE<,ðŽÀ`s,µ,Ä,,¾,¾,ç`B
[;±,ì·ù-@,Å~ACE<,µ,½`é`#Aftf@fCf<’@`«/f^fCf€fXf^f”fv,ì·œE³,àftf@fCf<fTfCfYf`fFfbfN,í,
Å,«,Ü,¹,ñB

fGfNfXfvf`[f%,ìŠg’£fRf`fefLfXfgf`fjf...[

,>,ì¼AfCf`fXfg`[f<Žž,ìfìfvfVf#f”,ÅA`ufVfFf`Šg’£,ðŽg,πv,ð`l’ð,µ,ÅfCf`fXfg`[f<,·,é,Æ<@`\\Šg’£
,µ,½fGfNfXfvf`[f%,ìRf`fefLfXfgf`fjf...[.©,ç`CEÉ`€],ª`s,ì,é,æ,π,É,È,è,Ü,·,ªA`**Ç**
%**A**,³,é,½`f`fjf...[.ì CTRLfL[,à **SHIFTfL**[‘g,Ÿ`#,í,¹,É,æ,èf`fjf...[“à-e,ª·ì
%>,µ,Ü,·,·,ì,ÅA-p`r,É%ž,¶,ÅŽg,ç·ª,~,é,±,Æ,ª,Å,«,Ü,·B
ŽQ`Æ`FfvfFf<fGfNfXfef`fvftf`<@`

<N“@fifvfVfjf“

□ŸŽw'è,μ,½ftf@fCf<,đ%đ“€μ,Ü,·□B
(fGfNfXfvf□□lf%o,©,ç,ì%oEfNfSfbfNf□fjf...□[,ì□u'!Žž%ođ“€□v,Æ““™,Á,·)

Explzh.exe /e <"Archive file">

Žw'è,·,é□'CEÉ,Í 8.3CE`Ž® ,ìftf@fCf<-¼,Á,à•K, ,□A'" ,ÁŠž,Á,Ä%oº,³,ç□B

□ŸŽw'è,μ,½ftf@fCf<,đ ISHftf@fCf<,É•İŠ·,μ,Ü,·□B
(fGfNfXfvf□□lf%o,©,ç,ì%oEfNfSfbfNf□fjf...□[,ì□uISH □ì□-□v,Æ““™,Á,·)

Explzh.exe /i <"FileName">

□!ISH32.DLL ,ª•Ê“r,É•K—v,Á,·□B

□Ÿ□uLHa□'CEÉ,đfRf}f“fhf%ofCf“ ,ÁŽÀ□s□vf_fCfAf□fOf{fbfNfX,đ•\Ž!,μ,Ü,·□B

Explzh.exe /c <UNLHA32.DLL ,É“n,·fifvfVfjf“□B[□È—ª%oÁ]>

□ä<LfifvfVfjf“ /c ,É n ,đ•t%oÁ,·,éŽ-,Áf_fCfAf□fO,đ•\Ž!,¹,·,É□uLHa□'CEÉ,đfRf}f“fhf
%ofCf“ ,ÁŽÀ□s□vŽÀ□s,μ,Ü,·□B

Explzh.exe /cn <UNLHA32.DLL,É“n,·fRf}f“fhf%ofCf“□B[□È—ª•s%oÁ]>

□!UNLHA32.DLL ,ìfRf}f“fhf%ofCf“ ,ì—İŽ®,É,Á,ç,Ä,í□ALHA.EXE ,â UNLHA32.DLL
,É•t'®,ìfhfLf...f□f“fg,đŽQ□Æ,μ,Á,,¾,¾,ç□B

□Ÿ□uftf@fCf<,đ•ªŠ,,□vf_fCfAf□fOf{fbfNfX,đ•\Ž!,μ,Ü,·□B

Explzh.exe /div <FileName[□È—ª%oÁ]>

□ŸŽw'è,μ,½ UU, XX, base64 CE`Ž®fefLfXfgftf@fCf<,ìffR□[fh(•İŠ·),đ□s,ç,Ü,·□B

Explzh.exe /d <"FileName">

□! UU (XX) ,Á,í begin □` end □s,Ü,Á□Abase64 ,Á,í filename="xxx" ,đŠÜ,ň,¾,¾,à,ì,đŽw'è,μ,Ä,-
,¾,¾,ç□B

□Ÿ□u□'CEÉ,ì□³“-□«CEŸ□,□v,đ□s,È,ç,Ü,·□B

Explzh.exe /t <"FileName">

□Ÿ□u□'CEÉ“àCEŸ□ö□vf_fCfAf□fO,đ•\Ž!,μ,Ü,·□B

Explzh.exe /f <FileName[□È—ª%oÁ]>

Ÿu'èĈ^³kv,đŽÀs,μ,Û,·B

Explzh.exe /r

'—<à,É,Â,ç,Ä

-{fVfFg,ÍfVfFfAfEfFfA,Å,·BŽŽ—pŠúŠÔ,Í,R,O“úŠÔ,Å,·B

ŽŽ—pŠúŠÔ€o%ß^È~□ACEp'±,μ,Ä,²~—p,ç,½,¾,□êñ,Í•K, , ìžÒ,É'—<à,μ,Ä,ç,½,¾,•K—v,ª, ,
è,Ü,·B
—ì<à,Í 1,000%~ ,Å,·B

'—<à,Í□A^È%o,ì•û-@,ð,²~—p,,¾,¾,ç□B

□œ□—,□,□,™ (fAfbfg□EfyfC)

<http://pay.nifty.com/pay/servlet/issPurchaseProductdetail?productId=BDCF091513>
,©,ç□A,·,®,ÉfCEfWfXfg,Å,«,Ü,·B □í□—,m,%o,t," ,™ %oi^õ,©, b,□,□,,□%oi^õ,ì•û,ì,Y

□í □—,□,□,™ (fAfbfg□EfyfC)

,Í□A,Q,O,O,Q"N,RCEŽ,æ,èfXf^□[fg,μ,½□A□—,m,%o
t," ,™ ,ìffWf^f<fRf“fef“fc”ì” ,fT□[frfX,Å,·B
"ì” ,¾,ê,Ä,ç,éfffWf^f<fRf“fef“fc,Í□A@nifty ID(Combo ID),Æf□fOfCf“fpfXf□□[fh,ð~—
p,μ,Ä□Afjff“f^f”,É□w“üCE^□í,Å,«,Ü,·B□w“ü,·,é“x,ÉfNfCEfWfBfgfj□[fh□î•ñ,â□ACEÁ□□î•ñ,È,Ç,ì”
ü—Í,Í•s—v,ì^A□SfXfs□[fffBfVfXfef€□A□ž□',ì<L“ü□E—X'—
,ìžèŠÔ,à,©,©,ç,·□A□R□,·,È,Ç,Å,“ŽžŠÔ,ª,©,©,é,±,Æ,à, ,è,Ü,¹,ñ□B

□œfxfNf^□[fVfFfAfCEfWfT□[frfX

<https://sw.vector.co.jp/swreg/step1.reserve?srno=SR002065>
,©,ç□A,·,®,ÉfCEfWfXfg,Å,«,Ü,·B

□í□—,m,%o,t," ,™ %oi^õ,ì•û,Í□—,□,□,™ ^ÈŠO,É□AxfNf^□[fVf□fCEfW@Nifty“X

iREGifT□[frfX ,à,²~—p,Å,«,Ü,·BfAfbfg□EjftfefB□i,Ü,½,ÍCombo□j,Í ID ,ÆfpfXf□□[fh,ð“ü—
Í,·,é,¾, , ,Ä□AfNfCEfWfBfgfj□[fh”Ô□t,ð“ü—Í,¹, ,ÉŽx•¥,ç,ª,Å,«,é^A□SfVfXfef€
,Å,·B□ifNfCEfWfBfgfj□[fhCE^□í%oi^õ,ì•û,ì,Y□j
iREGifT□[frfX ,ðžg,Å,Å Explzh ,ì'—<à,ð, ,±,È,ª

□œPipenet fVfFfAfEfGfA'ã□sfT□[frfX

<https://www23.rapidsite.net/pipene/item/AAK116-001.html>
,©,ç□A,·,®,ÉfCEfWfXfg,Å,«,Ü,·B

□¥%o<L<à—Z<@ŠÖ,©,ç,à'—<à,Å,«,Ü,·,ì,Å,²~—p,,¾,¾,ç□B

□œ<â□s□U□ž

□U□ž□æ□F,Y, , ,Ü<â□s(<CE'æ^êŠ<©<Æ<â□s) <{□èžx“X
“X”Ô□t□F,U,W,W
Ží—p□F•□'É—a<à
CEú□Á”Ô□t□F,P,U,R,V,O,T,T
-¼<`□F<S'© —T”V(flfjfcj) fqf□ftfL)

□œ—X•Ö□U'Ö

CEú□Á”Ô□t□F,O,P,V,T,O□|,O□|,V,O,Q,S,W
CEú□Á-¼□□F<S'© —T”V

,²'—<à,ç,½,¾,ç,½•û,Í□A,±,ç,ç,Å,²“ü<à,ìŠm”FCEã□A□³<Kft□[fU,Æ,μ,Ä“o~^ ,¾,¹,Ä,ç

Še DLL ,âŠÖ~AfAfCfRf“ ,É,Â,č,Ā

^È%º,İŠF—l•û,ì—D□G,Èfç□[f<,ðŽg,í,1,Ā,č,½,¾,«—{□i•i,ð□,éŽ—,ª,Ā,«„Ü,µ,½□B

- ;LHA.EXE ,í <g□è %oh'×Ž□,ª□i□—,³,è,½f\ftfgfEfGfA,Ā,·□B
- ;UNLHA32.DLL ,í ,l,%º,f,f,□Ž□,ª□i□—,³,è,½f\ftfgfEfGfA,Ā,·□B
- ;WINSFX32(M)(WinNT“ĀŽ©ĀÉ%ºð“€□'ĀÉ),í Mt.Wide Ž□,É,æ,èŠJ” ,³,è,½,à,ì,Ā,·□B
- ;UNZIP32.DLL ,í shoda T.Ž□,ª□i□—,³,è,½f\ftfgfEfGfA,Ā,·□B
- '□^Ŏ□FUNZIP32.DLL ,ðŠé<Æ“™ ,Ā—~—p□A,Ů,½,ì□x—p~—p,·,é□è□‡,É,í•K, ,f%ºfCfZf“fXĀ—ñ,ª•K—v,Ā,·□B□Ú□×,í,±,¿,ç,ð,²—,¾,³,č□B
- ;UNARJ32.DLL ,í ,l,%º,f,f,□Ž□,ª□i□—,³,è,½f\ftfgfEfGfA,Ā,·□B
- ;ISH32.DLL ,í kenŽ□□AGigoŽ□□AkondoŽ□□AkeizoŽ□□AasatoŽ□□AnonkiŽ□,ª□i□—,³,è,½f\ftfgfEfGfA,Ā,·□B
- ;ISH.COM ,í □î'É <§□ÆŽ□,ª□i□—,³,è,½f\ftfgfEfGfA,Ā,·□B
- ;TAR32.DLL□ABZ2LIB.DLL ,í <g%ºª □P•vŽ□,ª□i□—,³,è,½f\ftfgfEfGfA,Ā,·□B
- ;CAB32.DLL ,í <{“—M□ºŽ□,ª□i□—,³,è,½f\ftfgfEfGfA,Ā,·□B
- ;ZIP32.DLL ,í Info-ZIP ,É,æ,è□i□—,³,è,½f\ftfgfEfGfA,Ā,·□B
- ;IZIP32.DLL ,í Info-ZIP ,É,æ,è□i□—,³,è,½ ZIP32.DLL ,ð<g%ºª□P•vŽ□,ª“ú—{ĀÉè'í%ºž%º» ,³,è,½,à,ì,Ā,·□B
- ;ZCRYPT32.DLL ,í <g%ºª □P•vŽ□,ª□i□—,³,è,½f\ftfgfEfGfA,Ā,·□B
- ;SFX32GUI.DAT ,í <g%ºª □P•vŽ□,ª□i□—,³,è,½□CZip□'ĀÉ—p,İŽ©ĀÉ%ºð“€•” ,Ā,·□B
- ;UNRAR.DLL ,í Eugene Roshal Ž□,ª□i□—,³,è,½f\ftfgfEfGfA,Ā,·□B
- ;UNRAR32.DLL ,í <T^ä “N—íŽ□,ª□i□—,³,è,½f\ftfgfEfGfA,Ā,·□B
- ;BGA32.DLL ,í -Ø^º —~—ðŽ□,ª□i□—,³,è,½f\ftfgfEfGfA,Ā,·□B
- ;UnGCA32.DLL ,í “V—i □WŽ;Ž□,ª□i□—,³,è,½f\ftfgfEfGfA,Ā,·□B
- ;GCA.EXE□AGCAC.EXE□AGCA,İfAf<fSfŠfyf€□AGCA SDK,ì“□iĀ ,í□A'ß“c □^èž□,ª•Ů—L,µ,Ā,č,Ů,·□B
- ;YZ1.DLL ,í K.INABA Ž□,ª□i□—,³,è,½f\ftfgfEfGfA,Ā,·□B
- ;YZ1 ,İfAf<fSfŠfyf€,Æ YZ32*.LIB ,â YZDEC.EXE ,ì“□iĀ ,í,â,Ů,´,«Ž□,ª•Ů—L,µ,Ā,č,Ů,·□B
- ; Explzh ,Ā,í YZ1 ,ì“□iŽÒ,ì,â,Ů,´,«Ž□,æ,è YZ32*.LIB ,İŽg—p<—'ð,ð,x,~ ,Ā YZ1.DLL ,Ŏ'í%ºž,µ,Ā,Ů,·□B
- ;UNACEV2.DLL ,í Marcel Lemke Ž□,ª□i□—,³,è,½f\ftfgfEfGfA,Ā,·□B

,·,İ,ç,µ,čfc□[f<,ðĀèöŠ],µ,Ā,,¾,³,Ā,½•û□X□A,Ç,x,à, ,è,ª,Æ,x,²,´,č,Ů,·□B

ŠJ” ,·,é,É, ,½,Ā,Ā□Aft□[fU,İŠF—l•û,©,ç,ì□•Ā¾,â•s<i□‡□A,²—v—],ª•â•İŽQ□,É,È,è,Ů,µ,½□BŠ'z,â•ñ□□,µ,Ā,,¾,³,Ā,½•û□X□A,±,ì□è,ðŽØ,è,Ā%ºü,ß,Ā,~—ç,ð□\,µ□ă,º,Ů,·□B, ,è,ª,Æ,x,²,´,č,Ů,µ,½□B□iĀă,à<X,µ,,“Šè,č,µ,Ů,·□B

fAfCfRf“ ,ð'ñ<Ÿ,µ,Ā,,¾,³,Ā,½□A“c't , ,«„Đ,è,³,ñ□A'½“c□¹Ži□i,l,□,s□j,³,ñ□A<º%ºY—²Žu,³,ñ□A,Ç,x,à—L,è“i,x,²,´,č,Ů,µ,½□Bm()m

fo [fWfj] i n



i [Archiver DLL fo [fWfj] i n]

ftf@fCf<-¼ [q~e,É * ^ó,Å·\Z!,³,ê,Ä,ç,é,à,ì,í [ACE»ÝCEöŠ],³,ê,Ä,ç,éfo [fWfj] ,æ,èCEÄ,ç,à,ì,²fCf“fXfg [f<,³,ê,Ä,ç,éŽ-,ðŽ!,µ,Ü,· [B (f [fjCfo DLL ,ìfo [fWfj]” Ö [t,í Explzh ,ì,± ,ìfo [fWfj]“ CEöŠ]Žž,ÉŠm”F,µ,½,à,ì,Å,· [B)

[CEÉ'€ [,a,x,Ü, [s,ì,É, ©,Á,½,è·s<i [t“™ ,a” [q,·,é [ê [t [A,à,µ * ^ó,Å·\Z!,³,ê,½ DLL ,²fCf“fXfg [f<,³,ê,Ä,ç,é [ê [t,É,í DLL ,ìfAfbfvff [fg,à [s,Å,Ä,Y,Ä,,¾,¾,ç [B,» ,é,Å,à·s<i [t,ª %ü'P,³,ê,É,ç [ê [t,É,í [AOS

ŠÅ« [A·s<i [t [ó<µ [AŠefA [fjCfo,ìfo [fWfj]“ ,ð [[f<,Å [ŽÖ,Ü,Å,²^ê·ñ,,¾,¾,é,Æ, ,è,ª,½,ç,Å,· [B ([Copy]f {f^f” , ©,ç, Žg,ç,ì,n,rŠÅ« ,âfA [fjCfo,c,k,k“™ ,ì [i·ñ,ðfNfŠfbvf { [fh,ÖfRfs [,Å,« ,Ü,·)

[i fŠfXfg“à,ì'í ð DLL ,ðf_fuf<fNfŠfbfN,·,éŽ-,Å [A“ [t [fA [fjCfofvf [fWfjFfNfg,Ö [Ú'±,µ [A-Ú“í,ì DLL ftf@fCf<,ì [Š [Y,ÖfŠf“fN,Å,« ,Ü,· [BfŠfXfg,ª * ,Å·\Z!,³,ê,Ä,ç ,é [ê [t,í [A [Å [Vfo [fWfj]“ ,ÉfAfbfvff [fg,Å,« ,Ü,· [B

i [Copy]f {f^f”

, Žg,ç,ì,n,rŠÅ« ,âfA [fjCfo,c,k,k“™ ,ì [i·ñ,ðfNfŠfbvf { [fh,ÖfRfs [,µ,Ü,· [B

i [u-ç“o~ [vft [fU,É,Å,ç,Ä

Explzh ,ìfVfFfAfEfGfA,Å,· [B ŽŽ—pŠúSÓCEã,àCEp'±,µ,ÄŽg—p,·,é [ê [t,É,í—<à,ª·K—v,Å,· [B [Ü [x,í Explzh ,ì—<à,É,Å,ç,Ä ,ð,²—,¾,¾,ç [B

□i□u□Å□V”Å,ÖfAfbvff□lfg□v

,±,lf{f^f“,ðfNfŠfbfN,·,éŽ-,Å□Afcf“f^□[flfbfg,ÉœöŠ],³,ê,Ä,ç,é□AFA□[fJfCfo DLL

,l□Å□Vfo□[fWf#f“,lf`fFfbfN,ª,“,±,É,!,Ü,·□B

fo□[fWf#f“,lf`fFfbfNœã□ACE»□Y,“Žg,ç,lf□[fWf#f“,æ,è□V,μ,çfo□[fWf#f“,lfA□[fJfCfo DLL

,ªœöŠ],³,ê,Ä,ç,é□ê□#,É,l□uf_fEf“f□□[fh□vSm”Ff_fCfA□f□Of{fbfNfX,ª•\Ž!,³,ê□A[f_fEf“f□□[fh] □”

[DLL ,lfCf“fXfg□[f<] ,ð’S,ÅŽ©“® ,Å,“,±,É,!,Ü,·□B □ fA□[fJfCfoDLL,İŽ©“®□X□V<@”\

ŠÖ~A□€-Ú□FfCf“fXfg□[f< (□’œÉ’€□,É•K—v,É DLL)

ŠÖ~A□€-Ú□FfA□[fJfCfoDLL,İŽ©“®□X□V<@”\

□i' @□«, δ%øδ“€□i
fVfXfef€' @□«□A%B, μ' @□«, Ì•œƐ³, δ□s, ç, ½, ç□ê□‡, Éf` fFfbfN, μ, Ü, ·□B

□iŽ©“ @ŽÀ□s□i
, ±, Ìf` fFfbfNf{fbfNfX, ðf` fFfbfN, ·, éŽ-, Å□A"-n", aŽw'è, ³, è, ½□ó' Ô, Å, Ì□□- , a□s, Ì, Ü, ·□BŽÀ□sŽž SFX
, ÌfRf}f“fhf%øfCf“ , É "-n-" , ðŽw'è, ·, è, ÌŽ©“ @ŽÀ□s, ð—}Ž~ , Å, «, Ü, ·□B[WinSFX32M , Ì, Ý]
□i—á, Å, Ì□Af` fFfbfN, ³, è, Å, ç, é, Ì, Åft□[fU, É%øδ“€□æ, ð-â, ç□‡, Ì, ¹, éŽ-, É, Ž©“ @ , Å%øδ“€ , ³, è, Ü, ·□B

□iŽ©“ @□ã□', «□i
, ±, Ìf` fFfbfNf{fbfNfX, ðf` fFfbfN, ·, éŽ-, Å□A□ã□', «Šm”Ff□fbfZ□[fW, Ì•\Žì, ð—}□\$, ·, é, ±, Æ, a, Å, «, Ü, ·□B

□i fffBfƐfNfgfŠ•t, «□i
Šì”[ftf@fCf<, ÉftfHf<f_□i•ñ, Ü, Å, àŠÜ, Ý□A, » , è, ç, à□ĀƐ», μ, Ā%øδ“€ , δ□s, È, ç, ½, ç□ê□‡, ÉŽw'è, μ, Ü, ·□B

□i ƐĀ, çftf@fCf<, à□X□V□i
%øδ“€□æ, æ, è□V, μ, çftf@fCf<, a' □□Ý, μ, Ā, à, » , è, ç, Ì□ã□', «, μ, Ā%øδ“€ , ³, è, Ü, ·□B

□i %øüâ, (%øü, ' , ñ)f` fFfbfN•t, «□i
□□- , μ, ½Ž©ƐÉ%øδ“€□' ƐÉ, δ%øü, ' , ñ, ³, è, ½, , È, ç□ê□‡, É, Ì, ±, Ìf` fFfbfNf{fbfNfX, ðf` fFfbfN, μ, Ü, ·□B

□ã<L, Ìf` fCfAf□fOf{fbfNfX—á, Å□□□- , ³, è, ½Ž©ƐÉ%øδ“€□' ƐÉ, Ì□Af□[fU, É%øδ“€□æ, ð-â, ç□‡, Ì, ¹, éŽ-
, É, Ž©“ @ , Å“C:\Windows\Āp½_Ā`Ìß\MyfAfvfŠ” , Ö%øδ“€ , ³, è□A%øδ“€□æ, Ì readme.txt
, ðŽ©“ @ , ÅŠJ, Ž-, É, È, è, Ü, ·□B
ft□[fU, É%øδ“€□æ, ð-â, ç□‡, Ì, ¹, é, æ, x, É, μ, ½, ç□ê□‡, Ì□AçŽ©“ @ ŽÀ□sf
, Ìf` fFfbfNf{fbfNfX, ðf` ft, É, μ, Ü, ·□B

f` fCfAf□fOf{fbfNfX, ÌŠe□€-Ú, Ì•K—v, É%øž, ¶, ĀŽw'è, μ, Ā, , ¾, ³, ç□B%ø½, àŽw'è, ¹, , , É□□- , μ, Ā, à“Á, É-
â'è, Ì, , è, Ü, ¹, ñ□B

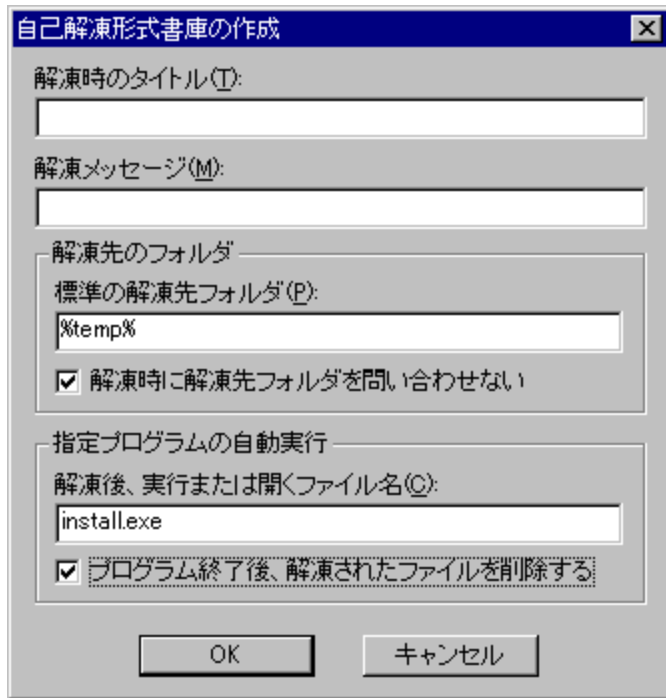
□y'□^Ó□z
□ã<LŠef` fCfAf□fOf{fbfNfX, Ì 1999”N, VƐŽƐ»□Ý, Å, Ì UNLHA32.DLL , Ì□Ā□V”Ā(1.35)
, Å, Ì, à, Ì, Å, ·□B, » , è^É□~ , Ì UNLHA32.DLL , Å, ÌŽd—Ì•Ī□X, ³, è, Å, ç, éŽ-, à
—'z, ³, è, Ü, ·, Ì, Å□A, » , Ì□ê□‡, É, Ì'□^Ó, a•K—v, Å, ·□B

LHA-SFX , Ì, æ, è□Ú□x, È<@”\, â□à-¾, É, Å, ç, Ā, Ì□AUNLHA32.DLL , É•t' @ , Ì Command.txt , â
Infcom.txt , ð, ²— , ¾, ³, ç□B(, ±, ±, Å, Ì□à-¾, Ì Command.txt , Æ Infcom.txt , ðŽQ□, É, μ, Ā, ç, Ü, ·)

CAB-SFX, i i -Zžf_fCfAf_fOf{fbfNfX, iSe€-Ú, i à-¾

fLffffrfjfbfg”ÅŽ©CEÈ%ø“€‘CEÉ (CAB32.DLL ,ð—~—p,μ,½ SFX)
 ,i i -Zžf_fCfAf_fOf{fbfNfX, iSe€-Ú, iŽw’è—á

, , ±, ±, Å, Í, A, ±, i "Explzh" , i”z•zfpfbfP[fW, iŽw’è—á, ðŽQ, É à-¾, μ, Ü, ·B



i %ø“€Žž, i f^fCf_gf<i
 SFX ŽÀsžž, É•Ži, ¾, é, f_fCfAf_fO, i f^fCf_gf<, ðŸ’è, μ, Ü, ·B

i %ø“€f_fbfZ[fW i
 %ø“€Žž, É•Ži, μ, ½, f_fbfZ[fW, ðŽw’è, μ, Ü, ·B

i %ø“€æ, i ftfHf<f_ i

i •W€ , i %ø“€æftfHf<f_
 %ø“€æffffBfCEfNfgfŠ, i %Šú’l, ðŽw’è, μ, ½, çê†, ÉŸ’è, μ, Ü, ·BŸ’è, ¾, é, Å, ç, È, çê†, ÍASFX
 , i , éfffBfCEfNfgfŠ (SFX , É, Å, Å, i f_jfCEf”fg) , a %Šú’l, Å, μ, Å•Ži, ¾, é, Ü, ·B
 “WŠjæffffBfCEfNfgfŠ, É, ÍA

- %common% -> \Program Files\Common Files\
- %program% -> \Program Files\
- %system% -> \Windows\System\ (\Winnt\System32\)
- %windir% -> \Windows\ (\Winnt\)
- %temp% -> ŠÅ«•İ” , i i <æftfHf<f_

, i •İ” , a , » , é, ¾, éŽw’è, Å, « , é , æ , x , Å , ·B
 (’FCAB32.DLL •t’® , i fefLfxfg, É, i à-¾, a , È , ç , i , ÅŽ®ftfj[f_g, Å, È, ç%Å”\« , , é)

□i%ø“€Žž,É%ø“€æftfHf<f_ø-â,ç□‡,í,¹,É,ç
,±,lf`fFfbfNf{fbfNfX,øf`fFfbfN,·,éŽ-,Å□A%øø“€æŽQ□Æf_fCfAf□fO,ø·\Ž|,·,éŽ-,È,□A□u·W□€,ì
%øø“€æftfHf<f_v,ÅŽw'è,³,ê,½%øø“€æ,É%øø“€,³,ê,Ü,·□B

□iŽw'èfvf□fOf%øf€,ìŽ©“@ŽÀ□s□i

□i%øø“€CEã□AŽÀ□s,Ü,½,ÍŠJ,ftf@fCf<-¼
“WŠJCEã,ÉŽ©“@“l,ÉŽÀ□s,μ,½,çfvf□fOf%øf€“™,ª, ,é□ê□‡,É,í□A,±,±,Å□Ý'è,μ,Ü,·□B
□i—á,Å,í Explzh ,lfCf“fXfg□[f%ø (install.exe) ,øŽw'è,μ,Å,ç,Ü,·□B

□i:fvf□fOf%øf€□l—¹CEã□A%øø“€,³,ê,½ftf@fCf<,øí□œ,·,é
“WŠJCEã,ÉŽ©“@ŽÀ□s,μ,½f□fOf%øf€□l—
¹CEã□A“WŠJ,μ,½ftf@fCf<,ø,·,x,Åí□œ,μ,½,ç□ê□‡,ÉŽw'è,μ,Ü,·□B

,±,ì—á,ì,æ,α,É□□¬,³,ê,½fLfffrfJfbfg”ÅŽ©CEÈ%øø“€□'CEÉ,øŽÀ□s,·,é,Æ□A

,P□DSFX ŽÀ□sCEã□A,·,x,Ä,ìŠi”[ftf@fCf<,ÍŠÅ««·í□” TEMP ,É“WŠJ,³,ê□A
,Q□D,»,ìCEã□AŽ©“@“l,É (“WŠJ,³,ê,½) install.exe ,ªŽÀ□s,³,ê□A
,R□Dinstall.exe □l—¹CEã□ATEMP ,É“WŠJ,³,ê,½,·,x,Ä,lfTf@fCf<,í□í□œ,³,ê,é□B

,Æ,ç,xfXfefbfv,ÅŽÀ□s,³,ê,Ü,·□B

□y'□^Ó□z
□ã<LŠef_fCfAf□fOf{fbfNfX,í 1999”N,VCEŽCE»□Ý,Å,ì CAB32.DLL ,ì□Å□V”Å(0.84)
,l,à,ì,Å,·□B,»,ê^É□~,ì CAB32.DLL ,ø,“Žg,ç,ÍŠÅ««,Å,íŽd—l·í□X,³,ê,Å,ç,éŽ-,à
—\z,³,ê,Ü,·,ì,Å□A,»,ì□ê□‡,É,í□^Ó,ª·K—v,Å,·□B

Explzh ,lfCf“fXfg[]f<

fCf“fXfg[]f%o,ìà-¾

ŸfCf“fXfg[]f<æ

Explzh ,đfCf“fXfg[]f<,éftfHf<f_ ,đŽw'è,μ,Û,·B
ffftfHf<fg,Á,Í \Program Files\Explzh ,Æ,É,Á,Ä,ç,Û,·ªA,Ç,±,Á,à,¨D,«,ÈèŠ (ftfHf<f_)
,ÉfCf“fXfg[]f<,Á,«,Û,·B

ŸfVfFf<fGfNfXfef“fVf†f“

fGfNfXfVf[]f%o<@“Šg'£iifVfFf<fGfNfXfef“fVf†f“i,đŽg,ªè†,Éf`fFbfN,μ,Û,·B
uU×Y'è(D)v{f^f“,Á,ÍAfGfNfXfVf[]f%o,É'Ç%oÁ,·,éf†fj...[]€-Ú,È,Ç,đY'è,Á,«,Û,·B

Ÿ'CEÉtf@fCf<,Ö,ì "ŠÖ~A•t,¨Y'è" ,đ•İX,·,é

Explzh ,đŠefA[]fjCfu,İŠg'£Zq,ÉSÖ~A•t,¨,Û,·B
ŠÖ~A•t,¨,đÆäZ©g,ÁfjXf^f}fCfY,³,è,Ä,ç,éè†,È,ÇASÖ~A•t,¨,ÉSÖ,·,éY'è,ÍèØ•İX,μ,½,-
,È,çè†,İ,±,İf`fFbfN,đ"ü,è,·,ÉfCf“fXfg[]f<,đs,Á,Ä,,¾,¾,çB
uSg'£Zq•É,İAfCfRf“•İXvf{f^f“,Á,ÍASÖ~A•t,¨AfCfRf“,İ•İXAftf@fCf<f^fCfv,İ•İX,È,Ç,đ
s,İ,Û,·B

ŸfGfNfXfVf[]f%o,ìuV<Kìì-vf†fj...[] ,É Lzh/Zip/Bga/V<Kftf@fCf<,đ“o~^

f`fFbfN,·,é,±,Æ,ÁfGfNfXfVf[]f%o,ì%oEfNfŠfNfRf“fefLfXfg[]fj...“à,ìuV<Kìì-vf†fj...
[] ,ÖLzh(Zip/Bga)V<Kftf@fCf<,ì€-Ú,ª'Ç%oÁ,³,è,Û,·B

ŸfGfNfXfVf[]f%o,ìuftf@fCf<vf†fj...[] ,Éu'CEÉ“àCEY'ööv,đ'Ç%oÁ

fGfNfXfVf[]f%o,ì.İftfHf<f_ 'l'đŽž,İfRf“fefLfXfg[]fj...[] ,Éu'CEÉ“àCEY'ööv,ª'Ç%oÁ,³,è,Û,·B
'l'đ,³,è,½ftfHf<f_ ^È%o,ì'CEÉ“à,İftf@fCf<,âftf@fCf<“à,İ•qŽš,đCEY'ö,·,é,±,Æ,ª,Á,«,é•Ö—
~,É<@“\,Á,·Bf`fFbfN,μ,ÁfCf“fXfg[]f<,³,è,é,±,Æ,đ,¨Š©,İ,μ,Û,·B

ŸfffXfNfgfbfv,É Explzh ,İVf†[]fgfjfbfg,đìì-(K)

fffXfNfgfbfv,É Explzh ,İVf†[]fgfjfbfg,đìì-,μ,Û,·B

ŸfGfNfXfVf[]f%o,ìu'—,évf†fj...[] ,É Explzh ,đ“ü,è,é(S)

\Windows\SendTo ftfHf<f_ ,Ö Explzh ,İVf†[]fgfjfbfg,đìì-,μ,Û,·B

ŸfVf[]fOf%ofE[]fj...[] ,É“o~^

fXf^[]fgf[]fj...[] ,Ö Explzh ,İfOf<[]fv,đ“o~^,μ,Û,·B

Šù,É[]V“Á,ì Explzh ,ªfCf“fXfg[]f<,³,è,Ä,ç
,éŠÁ<<,Á,İftf@fCf<,ìã',«fRfs[] ,İs,Í,ªAŠefİfVf†f“,ìY'èE
%ođ[]æ,¾,¨,đs,İ,Û,·B(Šù,ÉY'è,³,è,Ä,ç,é,à,İ,İf`fFbfN,³,è,Ä,¨,èAf`fFbfN,đŠO,·,Æ,»,ìY'è,ª
%ođ[]æ,³,è,Û,·)
INSTALL.EXE
,İfCf“fXfg[]f<Æã,àASÖ~A•t,¨AfVfFf<fGfNfXfef“fVf†f“,ìY'è,È,Ç,đ•İX,·,éfc[]f<,Æ,μ,Ä,à,¨Žg,ç
%o²,³,çB

UNLHA32.DLL

DOS "Å,ì LHA.EXE(<gè%h'xŽi),đ ,l,%o,f,f,Ž,ª Win32Bit—p,ìDLL,Æ,μ,Ä^ÚA,μ,½,à,ì,Å,·B
Nifty-Serve,ì FWINNT LIB 11 ,ÉÅV"Å,ª, ,è,Ü,·B

INET ã,Å,ÍA

<http://www.csdinc.co.jp/archiver/> ("fA[fjCfovfWfFfNfg)

,©,çŽè,É"ü,ê,éŽ-,ª,Å,«,Ü,·B(í,ÉÅV,ì,à,ì,ª'u,©,ê,Å,ç,Ü,·)

UNZIP32.DLL

UNZIP.EXE ,đfx[]fX,É shoda T.Ž[],^a Win32Bit—p,É,c,k,k%»³,ê,½,à,ì,Å,·[]B
Nifty-Serve,ì FWINDB LIB 4 ,É, ,è,Û,·[]B

INET []ã,Å,í[]A

<http://www.csdinc.co.jp/archiver/> (“[][]#fA[][fjfCfofvf[]fWfFfNfg)

, ©,çŽè,É“ü,ê,éŽ-^a,Å,«,Û,·[]B(í,É[]Å[]V,ì,à,ì,^au, ©,ê,Å,ç,Û,·)

UNZIP32.DLL ,lf%ofCfzf“fXCE -ñ,É,Å,ç,Ä

UNZIP32.DLL ,đŠé<Æ“™,Å—~—p[]A,Û,½,í[]x—p—~—p,·,é[]ê[]#,É,í•K, ,f%ofCfzf“fXCE_-ñ,^a•K—
v,Å,·[]B[]Ú[]x,í,±,·,ç,đ,²—, ,¾,³,ç[]B

[]; UNZIP32.DLL ,lftjŠ[][f]ftfg,Å,·^a[]A[];CEã,ìCEp’±“lŠj”[]A,“,æ,Ñ,±,ìfTfj

[][fg,í^Ûž[],ì,½,ß,ÉŠñ•t,àŽó,~•t,~,Å,“,ç,ê,Û,·[]BŠF—l[]A,æ,é,μ,, Šè,ç,ç,½,μ,Û,·[]B

ZIP32.DLL (or IZIP32J.DLL)

Info-ZIP fOf<[fv,É,æ,è Win32Bit-DLL —p,Æ,μ,ÄŠJ”^CEöŠJ,³,ê,½,à,ì,Å,·□B
,» ,ífjŠfWfjif<,íF□[fX,ðCE³,É□A<g%ºª □P•vŽ□,ª“ú- {CEê‘í%ºž”Å,Æ,μ,Ä%ºü•Í^CEöŠJ,³,ê,Ä,ç,é,ì,ª
IZIP32J.DLL ,Å□A,» ,ç,í v0.06 ,Å□Å□I,í”Å,Æ,É,Ä,Ä,μ,Ü,Ä,½,æ,æ,Å,·□B
Info-ZIP ”Å,ì ZIP32.DLL v2.30 ^É□~ ,ì,à,ì,í“ú- {CEê•¶Žš,É,à‘í%ºž,μ,Ä,“ ,è□AExplzh ,Å,í,» ,ç,ì
ZIP32.DLL ,Å,à“@□ì, ,é,æ,æ,É,É,Ä,Ä,Ü,·,ì,Å□AZip ,ì‘CEÉ,ð□ì□¬,μ,½,ç□é□‡,É,íInfo-ZIP ”Å
ZIP32.DLL v2.30 ^É□~ ,ì,à,ì,ð,“Žg,ç, ,¾,¾,ç□B

^Ä□t%º» ,É,Ä,ç,Ä

IZIP32J.DLL ,ì v0.04 ^É□ã,ð,“Žg,ç,Ä ZCRYPT32.DLL ,àfCf“fXfg□[f<,³,ê,Ä,ç
,éŠÅ«« ,Ä,í^³□k,ì□Ü,É□‘CEÉftf@fCf<,Ö,í^Ä□t%º» ,à□s,ì,Ü,·□B(ZIP32.DLL v2.30 ^É□~ ,ì,à,ì,í
ZCRYPT32.DLL ,ð•K—v,Æ,¹, ,É□‘CEÉftf@fCf<,Ö,í^Ä□t%º» ,ª%ºÄ“\)
ZCRYPT32.DLL ,í Win32—p,Æ,μ,Ä <g%ºª □P•vŽ□,ª DLL %º» ,³,ê,Ü,μ,½□B

IZIP32J.DLL / ZCRYPT32.DLL ,í,ç, , ,é,à Nifty-Serve ,ì FWINNT LIB 11□AINET □ã,Ä,í□A
[http://www.csdinc.co.jp/archiver/ \(“□□#fA□\[fJfCfofvf□fWfFfNfg\)](http://www.csdinc.co.jp/archiver/ (“□□#fA□[fJfCfofvf□fWfFfNfg))
,© ,çŽè,É“ü,è,éŽ-,ª,Ä,« ,Ü,·□B

ZIP32.DLL 2.30 ,í□A
[http://www.csdinc.co.jp/archiver/lib/zip32j.html \(“□□#fA□\[fJfCfofvf□fWfFfNfg\)](http://www.csdinc.co.jp/archiver/lib/zip32j.html (“□□#fA□[fJfCfofvf□fWfFfNfg))
,© ,çŽè,É“ü,è,ç,é,Ü,·□B

Info-ZIP ,ì ZIP32.DLL ,ì□Ú□x,É,Ä,ç,Ä,í□A
[http://www.cdrom.com/pub/infozip/ \(Info-ZIP ,ífz□\[f€fy□\[fW □!%ºpCEè\)](http://www.cdrom.com/pub/infozip/ (Info-ZIP ,ífz□[f€fy□[fW □!%ºpCEè))
,ð,²— ,¾,¾,ç□B

SFX32GUI.DAT

Info-ZIP ,É,æ,é ZIP ,lf[fX(UNZIP5.32,ZCRYPT27),ðŒ³,ÉA<g%ª P•vŽ,ªè-³,ê,Ü,µ,½B
SFX32GUI.DAT ,ðpfX,l'É,Á,½ftfHf<f_ (windows\System\,É,Ç) ,Ö'u,ç,Ä,,"Ž-,Á ZIP"ÁŽ©ŒÈ
%øð"€'ŒÉ,ðè-·,·,éŽ-,ª,Á,«,é,æ,ª,É,É,è,Ü,·B
Nifty-Serve ,ì FWINNT LIB 11 ,É, ,è,Ü,·B

INET ã,Á,íA

<http://www.csdinc.co.jp/archiver/> ("fA[fjfCfovf[WfFfNfg)
,©,çŽè,É"ü,ê,éŽ-,ª,Á,«,Ü,·B(í,ÉÁV,ì,à,ì,ª'u,©,ê,Ä,ç,Ü,·)

UNARJ32.DLL

,l,%o,f,f,□Z□,ª Win32Bit—p,É,c,k,k%o»,³,ê,½,à,ì,Å,·□B
“~¼,lf%ofCfuf%ofŠ,Åf□□[f^fX“™,lfCf“fXfg□[f%o—p DLL (,â,í,è UNARJ32.DLL ^ ^;) ;
,ª, ,è,Û,·ì,Å’□^Ó,μ,Ä,,¾,¾,ç□B
□! ,l,%o,f,f,□Z□fo□[fWf#f“,í UNARJ32J.DLL ,Æ,È,Á,Ä,ç,Û,·□B
Nifty-Serve,ì FWINNT LIB 11 ,É, ,è,Û,·□B

INET □ã,Å,í□A

<http://www.csdinc.co.jp/archiver/> (“□□#fA□[fjfCfofvf□fWfFfNfg)
,©,çZè,É“ü,ê,éZ-,ª,Å,«,Û,·□B(□í,É□Å□V,ì,à,ì,ª’u,©,ê,Á,ç,Û,·)

ISH32.DLL

Unix—p, ð public domain, Å— Ñ 'É, μ, Ä, ç, éishftf@fCf, fRf“fo[]f^[][, ð nonki ,³, ñ Å
ASATO ,³, ñ Å, mfjzfËfj, .[],, L(^ -),³, ñ,^a Win32Bit—p, É, c, k, k%»³, ê, ½, à, Ì, Å, ·[]B
Nifty-Serve, Ì FWINDB LIB 2 ,É, ,è, Û, ·[]B

INET []ã, Å, Í[]A

<http://www.csdinc.co.jp/archiver/> (“[][]#fA[][fjCfofvf[]fWfFfNfg)
, ©, çZè, É“ü, ê, éZ-,^a, Å, «, Û, ·[]B(í, É[]Å[]V, Ì, à, Ì, ^a’u, ©, ê, Å, ç, Û, ·)

TAR32.DLL

kmTar PowerUpkit for WinNT (tantanŽ□□i),đfx□[fX,É□A<g%o^a□@□P•vŽ□,^a Win32 —p
,Æ,μ,Ä DLL %o»,³,ê,½,à,ì,Å,·□B
“~Žž,É BZ2LIB.DLL ,à System ftfHf<f_ÖfRfs□[μ,Ä,“ ,Ž-,Å tar-bzip2 Ć`Ž® ,ìfA□[fjfCfu,à‘€□ì,·,éž-
,^a,Å,<,é,æ,π,É,È,è,Ü,·□B□; TAR32.DLL ,ì v0.51 ^É□ă,đ,“Žg,ç,ì□é□‡,í BZ2LIB.DLL ,í•K—
v, ,è,Ü,¹,ñ□B
,ç,.,ê,ì DLL ,à Nifty-Serve ,ì FWINNT LIB 11 ,É, ,è,Ü,·□B

INET □ă,Å,í□A

<http://www.csdinc.co.jp/archiver/> (“□□#fA□[fjfCfofvf□fWfFfNfg)
,©,çZè,É“ü,ê,éž-^a,Å,«,Ü,·□B(□í,É□Å□V,ì,à,ì,^au,©,ê,Å,ç,Ü,;)

CAB32.DLL

Microsoft ,ì•W□€”z•z—p,Æ,μ,ÄŽg,í,ê,Ä,ç,éLffffrflfbfgCE`Ž®ftf@fCf<,ì “WŠJ□E
^³□k,đ,·,é^x,É•K—v,Ëf%ofCfuf%ofŠ,Å,·□B
<{“à -M□°Ž□,ª Win32—p,Æ,μ,Ä DLL %oo»,³,ê,Ü,μ,½□B
Nifty-Serve,ì FWINNT LIB 11 ,É, ,è,Ü,·□B

INET □ã,Å,í□A

<http://www.csdinc.co.jp/archiver/> (“□□#fA□[fjfCfofvf□fWfFfNfg)
,©,çZè,É“ü,ê,éŽ-,ª,Å,«,Ü,·□B(□í,É□Å□V,ì,à,ì,ª’u,©,ê,Å,ç,Ü,·)

UNRAR.DLL ,Æ UNRAR32.DLL

UNRAR32.DLL ,í RAR ftj@fCf<,ì%ođ“€ ,đ□s,α^x,ì•K—v,Èf%ofbfpf%ofCfuf%ofŠ,Å,·□B
<T^ä “N-í,³,ñ,^a DLL %o»,³,ê,Û,μ,^{1/2}□B

UNRAR32.DLL 'P'ì,Å,í,È,□ARAR CE`Ž@□f□³,ì UNRAR.DLL ,^a•Ê“r•K—v,Å,·□B
□!UNRAR.DLL ,í Eugene Roshal Ž□,^aŠJ”,³,ê,^{1/2} DLL ,Å,·□B

—^{1/4}•û,ì DLL ,í,ç, ,ê,à□A<http://www.csdinc.co.jp/archiver/> (“□□#fA□[f]fCfofvf□fWfEfNfg)
, ©,çf_fEf“f□□[fh,Å,« ,Û,·□B

BGA32.DLL

BGA32.DLL ,Í .GZ / .BZ2 ,Å^3□k,μ,½ftf@fCf<,©,ç□'ĈÉÉ(.GZA / .BZA),ð□ì□¬,μ,½,è□A%øð“€
,·,é^x,É•K—v,Èf%ofCfuf%ofŠ,Å,·□B^3□k□E%øð“€,Ì'¼,É,à□AŠi”[ftf@fCf<,ìí□œ□EŠi”[ftf@fCf<-
¼,ì•í□X,È,Ç,à□s,ì,Û,·□B
-Ø'ø —~ -ø,³,ñ,ª Win32 —p,Æ,μ,Ä DLL %ø»,³,ê,Û,μ,½□B

BGA32.DLL ,í□Ahttp://www.csdinc.co.jp/archiver/ (“□□#fA□[fj]fCfofvf□fWfFfNfg)
,©,çf_fEf“f□□[fh,Å,«,Û,·□B

UnGCA32.DLL

'B" c ^ ê Ž , Š" , ê, 1/2" ñ í, É , , ç ^ 3 k — i, ð œ Ö, é ^ 3 k œ ` Ž ®, Å , é GCA ' œ É, ì ' € , ð s, æ, 1/2, ß, ì f
%o f C f u f %o f Š, Å, · B
"V-ì W Ž ; Ž , ð Win32 — p, Æ, µ, Ä DLL %o» , ê, Ü, µ, 1/2 B

DLL Š Ý, Í A <http://www.csdinc.co.jp/archiver/> (" # A [f j f C f o f v f f W f F f N f g)
, ©, ç f f E f " f f f f h, Å, «, Ü, · B

GCA , É, Å, ç, Ä, Í A <http://www1.odn.ne.jp/~synsyr/gca.html>
, ð, 2 — , , 3/4, 3, ç B DOS — p, , æ, Ñ Windows — p, ì f j f t f g, à " ü Ž è o — ^, Ü, · B

, È, " A Explzh , Å UnGCA32.DLL , ð — ~ — p, µ, Ä GCA ' œ É, ð ì — , · , é, 1/2, ß, É, Í A œ » ó, ì Ž d — i, Å, í
'GCAC.EXE' , à • K — v, Å, · B 'GCAC.EXE' , í ð ä < L URL f A f h f œ f X, æ, è " ü Ž è, µ, Ä, , 3/4, 3, ç B

YZ1.DLL

,â,Û,´,«Ž,ìŠ”,³,ê,½ "DeepFreezer" ,î³kĈ`Ž®,Å, ,é YZ1‘ĈÉ,ð^μ,κ DLL ,Å,·B
K.INABA Ž,ª Win32 —p,Æ,μ,Ä DLL %o»,³,ê,Û,μ,½B

YZ1.DLL ,íA<http://hp.vector.co.jp/authors/VA017441/> (K.INABA Ž,ìfz[f€fy[fW)
,©,çf_fEj“f[fh,Å,«,Û,·B

YZ1 Ĉ`Ž®,ðŠj”,³,ê,½,â,Û,´,«Ž,ìfz[f€fy[fW,í<http://member.nifty.ne.jp/yamazaki/>
,Å,·BŽ©ĈÉ%ð“€‘ĈÉ,ìì¬,É•K—v,É **yzdec.exe** ,à“üŽè,Å,«,Û,·B

fRf}f“fhf%ofCf“,đ UNLHA32.DLL ,É“n,μ,ÄŽÀ□s,μ,Ü,·□B

ŽÀ□s,ðf`fff“fZf<,μ,Äf_fCfA f□fO,ð•Â,¶,Ü,·□B

LHa ,lfRf}f“fhf%oofCf“ ,đŽw’è,μ,Ü,·□B
fGfNfXfvf□□[f%o, ©,ç□‘ĀÉftf@fCf<,âftfHf<f_,đfhf□fbfv,μ,Ä□A□‘ĀÉÉ-¼□AftfHf<f_-¼,đ“ü—Í,·,éŽ-
,à,Ā,«,Ü,·□B

fRf}f“fhf%oofCf“ ,ì—lŽ® ,É,Ā,ç,Ā,Í LHA.EXE, ,Ü,½,Í UNLHA32.DLL ,É•t’® ,lfhfLf...
f□f“fg,đŽQ□Ā,μ,Ā,,¾,¾,ç□B

UNLHA32.DLL ,ìŸ'èf_fCfAfO,ð•\Ži,μ,Ü,·B

,±,±,©,ç UNLHA32.DLL •t'®,ì COMMAND.TXT (fRf}f“fh□à-¾ftf@fCf<) ,ðŽQ□Æ,μ,Ä,,¾,¾,ç□B
^ê“xfi□[fvf“ ,μ,½ COMMAND.TXT ,ìpfX□î•ñ,í•Û‘¶,¾,ê,Û,·,ì,Ä□AZÿ%oñ,æ,èf{f^f“^ê”,Ä
COMMAND.TXT ,ðŽQ□Æ,Ä,«,Û,·□B(COMMAND.TXT ,í□A—\,ß□A□Š’è,ìftfHf<f_,ÉfRfs□[,μ,Ä,“,•K—
v,¾, ,è,Û,·)

fRf,f“f_fCfAf□fOf{fbfNfX,©,ç COMMAND.TXT ,ðŽQ□Æ,μ,½,ç□ê□#,í SHIFT fL□[,ð
%oÿ,μ,É,¾,çf{f^f“ ,ð%oÿ,μ,Ä,,¾,¾,ç□B

Œÿö,µ,½,çftf@fCf<,ðŽw'è,µ,Ä%º,³,çBfCf<fhfj[fh,ÄŽw'è,·.éŽ-,à,Å,«,Û,·B—
á,!,ÍADOCftf@fCf<,ÆTXTftf@fCf<,ðŒÿö,³,¹,½,çŽž,ÍA

***.doc;*.txt**

“™,Æ';',Å<æ∅,Á,ÄŽw'è,µ,Ä%º,³,çBfi?' ,lfCf<fhfj[fh,àŽg,!,Û,·j

ŒŸö'îû'ŒÉftj@fCf<,ì'ŸŸŸ,·,éftjHf<f_,ðŽw'è,μ,Ä%º,³,†B

f`fFfbfN,·,é,ÆŽ©ŒÈ%∞đ“€□‘ŒÉ(*.exe)“à,ìŒŸ□đ,¾,¯□s,È,ç,Û,·□B

f`fFfbfN,·,é,ÆŽw'è,μ,½ftfHf<f_ ^È%º,à□Ä<A“l,ÉŒÿ□ð,μ,Ü,·□B

LHaCE`Ž®,ì‘CEÉ“à,©,çCEŸ□ð,μ,Û,·□B

Zip® , ©, µ, Ü, ·
ZIP AUNZIP32.DLL v0.8x ^, ©, —L, É, È, è, Ü, ·

ARJCE`Ž® ,ì‘CEÉ“à, ©, çCEÿ□ō, μ, Û, ·□B

CABŒ`Ž® ,ìŒŒÉ“à ,© ,çŒŒŸŒŒŒ ,μ,Û ,·ŒB

'T,·□ê□Š,đŽw'è,·,é^x,ÉŽQ□Æ,·,é□uftjHf<f_ŽQ□Æf_fCfAf□fOf{fbfNfX□v,đ<N“®,μ,Û,·□B

ŒŸöøŒ, Åžw'è, μ, ½øŒ, ÅŒŸø, øŠŽn, μ, Ü, ·B

ŒŸö, ð|⁻¹, μ, Ä_fCfAf_fOf{fbfNfX, ð•Â, ¶, Ü, ·B
ŒŸö't, í'tž~f{f^f", /E, Ê, èAŽÁs, ð't'f, ·, éž-, ¢, Å, «, Ü, ·B

Œÿöœ<%É,iftj@fCf<,ð•\Ž!,·,éfrf...[][,Å,·[]B
'l'ð,μ,½ftj@fCf<,đ_fuf<fNfŠfbfN,μ,ÄŠÖ~A•t, -,ç,ê,½fAfvfŠ,©,çŠj,,±,Æ,â[]AfGfNfXfvf[][]f
%o“™,Öfhf%ofbfO[]•fhf[]fbfv,μ,Ä%ođ“€,·,éŽ-,à,Å,«,Ü,·[]B
[]! f}fEfX,l%oEfNfŠfbfN,Äf|fbfvfAfbfvf[]fjf...[][,ð•\Ž!,Å,«,Ü,·[]B

□'ŒÉ“àftj@fCf<,ÉŠÜ,Ü,è,éŒÿ□ð,μ,½,ϕ•¶Žš—ñ,ðŽw'è,μ,Ü,·□B

□Ý'è•ī□XĈë,īfšfXfgfrf...□[,ì•\Žì,īfTf“fvf<,Ā,·□B
IE4.0 ^Ē□ă,īŠĀ<<(COMCTL32.DLL version 4.72^Ē□ă),ì□é□‡,Ā, ,ê,í□¶%œE,ì%œæ-
Ē,ì”wĈi□F□E•¶Žš□F,ì•ī□X,ā,Ā,«,Ū,·□BIE4.0 ,ì“±“ü,³,ê,Ā,ç,Ē,çŠĀ<<,Ā,īfcfš□[frf...□[(□¶,ì%œæ-Ē)
,ì•û,ì”wĈi□F□E•¶Žš□F,ì•ī□X,ā,Ā,«,Ū,¹ñ□B(fVfXfef€jff%œ□[,ðŽg,!,ì%œĀ)

fRf“fgf□□[f<fpflf<,Å□Ý’è,μ,½”wCEi□F(fVfXfef€fjf%□□[),đŽg,α,æ,α,É,È,è,Ü,·□B
□Ý’è,đ•í□X,μ,½□é□±□A,»,ì□Ý’è,đ—LCEø,É,·,é,É,í Explzh ,đ□Å<N“@,μ,Ä,,¾,¾,ç□B

fŠfXfgfrf...[]i[uúx•\Ž!v,Å,i—ñ,i•,đfAfCfef€,i•¶Žš",i'·,³,É, ,í,¹,Ä•\Ž!,μ,Ü,·B

Explzh,ì%°E,ìfrf...[“à,ìftfHf“fg,đ•íX,μ,Ü,·B
,²Ž©•ª,ìCE©,â,·çftfHf“fg,É•íX,μ,ÄŽg—p,μ,Ä,,³/₄,³,çB
ffftfHfçfg,Ä,íu,l,r ,ofSfVfbfNv,đŽg,Ä,Ä,ç,Ü,·B

frf... ["à, ìfAfCfef€ , ì•ŕŽš F, ð•ï X, µ, Ü, · B
IE4.0 ^ È ã, Ì Š «, Å, È, ç é ð ‡, Ì ç Š [frf... [fAfCfef€ , ì•ŕŽš F, Í•ï, í, è, Ü, ¹, ñ B

frf... ["à, ì" wCe i F, ð • Ì X, µ, Ü, · B
[IE4.0 ^ È ä, Ì Š <<, Å, È, ç è ð †, Í ç Š [frf... [f Af C fe f € , ì" wCe i F, í • Ì, í, è, Ü, ¹, ñ B

frf...[(□□□E%oE) ,³ftfH□[fjfX,đŽ, ,Á,½,Æ,«□A'í'đ,³,ê,Ä,č,éjAfcfef€,đfOfCE□[•\
Ž,Ä'í'đ,³,ê,½,Ü,Ü,É,μ,Ü,·□B

f`fFbfN,·,éŽ-,ÅAftjHf<f_ì, ,é'ĀÉ,ìê†,ífcš[]frf...[],ÆfšXfgfrf...[],ì,Q%œ-Ê,Å'ĀÉ"à—
e,ð•\Ž!,μAftjHf<f_ì,É,Ā'ĀÉ,ìê†,íšXfgfrf...[],ì,Ÿ,Å•\Ž!,μ,Ů,·B

%øð“€æftjHf<f_ðŽw’è,μ,Û,·B
,±,±,ÅY’è,μ,½ftjHf<f_a,·,x,Ä,i%øð“€æ,iffjtjHf<fg,Æ,È,è,Û,·B

Œ» ŸŠ, ç, Ä, ç, é' ŒÉ, ð" WŠ] æ, ð" WŠ] , ·, é, æ, ø, É, È, è, Ü, · B

%ođ“€□æ,đŽw'è,·,é^×,ÉŽQ□Æ,·,éf_fCfAf□fOf{fbfNfX,đ<N“®,μ,Û,·□B

“Á'è,ì•Ù'¶¶æ,ðŽw'è,μ,Ä,“,«,½,ç¶ê¶¶,í,±,ì—“,É•Ù'¶¶æ,ìftfHf<f_,ðŽw'è,μ,Ü,·¶B
,±,±,Å¶Ý'è,μ,½ftfHf<f_,ª•Ù'¶¶æ,ìffftfHf<fg,Æ,È,è,Ü,·¶B

Œ»ŸŠ,ç,Ä,ç
,éŒÉ,ìftHf<f_•Ű'Œ,·,éffftHf<fg,ìftHf<f_,Æ,μ,ÄAftf@fCf<,ì•Ű'Œf_CfAfŒOf{fbfNfX,ðfì[fvf“,μ
,Ű,·B

•Û'¶æ,ðŽw'è,·,é^x,ÉŽQÆ,·,éf_CfAfOf{fbfNfX,ð<N"®,μ,Û,·B

0i<ÆftfHf<f_đŽw'è,μ,Ä,¨,«,½,¢ê±,í,±,ì—“,ÉŽw'è,μ,Ü,·B

UNLHA32.DLL ,íì<ÆŽž,É,í ŠÂ««•ï” "TMP" <y,Ñ "TEMP" ,ÅŽw'è,³,ê,½ftjHf<f_,ðŽg—
p,μ,Ü,·,ªA•Ê,É“Á'è,ìì<ÆftjHf<f_,ðŽw'è,μ,Ä,“,«,½,çé±,í,±,ìf`fFfbfNf{fbfNfX,ðf`fFfbfN,μAä
—“,ìfefLjXfgf{fbfNfX,ÉftjHf<f_,ðŽw'è,μ,Ä,,¾,³,çB

ï<ÆftfHf<f_đŽw'è,·,é^x,ÉŽQ□Æ,;éf_fCfAf□fOf{fbfNfX,đ<N“®,μ,Û,·□B

□'ĈÉÉ,đŠj,ftfHf<f_đŽw'è,μ,Ä,¨,«,½,¢□ê□‡,í,±,ì—“,ÉŽw'è,μ,Ä,,¾,¾,¢□B,±,±
,Ä□Ý'è,μ,½ftfHf<f_ªf□fjf...□[.ì □u□'ĈÉÉ,đŠj,□v,ìffftfHf<fg'l,Æ,È,è,Û,·□B

,±,ìf`fFbfNf{fbfNfX,ðf`fFbfN,;é,Æ□A□'ÆÉ,ìjffCEf"fgftfHf<f_ðffftfHf<fg,É,μ,Ä□u□'ÆÉ,ðŠJ,-
□vf_fCfAf□fOf{fbfNfX,ð•\Ž!,μ,Ü,·□B

u'ĀÉ,đŠ,vfftfHf<fgftfHf<f_,đŽw'è,·,é^x,ÉŽQĀE,·,éf_fCfAfĀOf{fbfNfX,đ<N“®,μ,Û,·ĀB

ftf@fCf<%o{—,ÅŽg—p,·,éfGfffBf^,È,Ç,ðŽw'è,μ,Ä,,³/₄,³,ç□B
fGfffBf^,ÉfRf}f“fhf%ofCf“,ðŽw'è,·,éŽ-,à,Å,«,Ü,·□B
□! %o¹/₂,àŽw'è,μ,Ä,ç,É,ç□é□‡,í Windows ,lf□f,' ,©,çŠJ,«,Ü,·□B

fGffBf^,đŽw'è,·,é^×,ÉŽQ□Æ,·,éRf,f“f_fCfA□fOf{fbfNfX,đ·N“®,μ,Ü,·□B

; ŽěŽ, ĺ, ĺEjCf<fXfXfLfff“fvf□fOf%of€, đŽw'è, μ, Ä, , 3/4, 3, ç□B

fEjCf<fXfXfLfff“fvf□fOf%of€,đŽw'è,·,é^×,ÉŽQ□Æ,·,éRf,f“f_fCfA□fOf{fbfNfX,đ·N“@,μ,Ü,·□B

fEjCf<fXfXfLfff“fvfOf%of€,.Ö,İfİfvfVf#f“<N“®fpf%of[]f^,đŽw’è,μ,Û,·□B

ŽQ□,Û,Å,É□C

Norton Anti-Virus ,Í /s

McAfee VirusScan ,Í **/AUTOSCAN /NOSPLASH**

,đŽw’è,·,é,Æ—Ç,ç,Å,μ,å,π□B<N“®fİfvfVf#f“,ì□Ú□×,É,Â,ç

,Ä,í□CŠefEjCf<fXf`fFbfj[]□»•i,É•t’®,İfwf<fv,âfefLfXfg,đŽQ□Æ,μ,Ä,,¾,³,ç□B

,±,±,Íf`fFfbfN,³,ê,Ä,¨,Ž-,ð,„,§,μ,Ü,·B
¡ Ž©ŒÉ%øð“€ŒÉ,ìê†,ìŒÉ“à‘S,Ä,ð%øð“€,μ,Äf`fFfbfNŒäC”O,ì^x,É
EXEftf@fCf<,Æ,μ,Ä,ìŽ©g,àf`fFfbfN,³,¹,é,æ,α,É,μ,Ä,ç,Ü,·B

%øð“€æ,É“^{-1/4},ì,æ,èV,μ,çftj@fCf<,ªŠù,É‘¶Y,μ,Ä,ç,Ä,à“WŠJ,ðs,È,ç,Ü,·B
|,±,±,ª-çf`fFbfN,¾,Æ%øð“€Žž,ìŠm”Ff_fCfAfOf{fbfNfX,ìuã‘,«Žž,É,ìŠm”FffbfZ[fW,ð•\
Ž!v,í—LÆø,É,È,è,Ü,¹,ñB

“Ç,Ýž,Ýé—p”™,ìtf@fCf<,à,»,ì,Ü,Ü,ì’®«,Å“WŠJ,³,é,Ü,·B

fifvfVfjf“,đf`fFbfN,·,éŽ-,Å□Aff□[f^•s—Ç,È,Ç,ì¹□□,đŽó,¯,½□‘CEÉ,ÉfAfNfZfX,·,éŽ-,ª,Å,«,é,æ,ꝛ
,É,É,è,Ú,·□BLHa □‘CEÉ,É,Ý—LCEø,ÈfifvfVfjf“,Å,·□B

u'žž%ođ“€v “™,ifVfFf<fGfNfXfef“fVf†f“<@“\,©,ç TAR Ć`Ž®,ì‘ĆÉ,đ“WŠJ,·,éŮ,É,Å,éuS-JIS
-> EUCvf_fCfAfffOf{fbfNfX,đ—}š,μ,Ů,·B

fifvVfjf“,öfftjHf:fg'l,É-ß,μ,Ü,·□B

,.x,Ä,İftf@fCf<,ª,»,İ,Ü,Ü,İ'©□«,ÅŠi"l,³,ê,Ü,·

□'ŒÉ,ìX□V"úŽž,đ□'ŒÉ"à,ìŠi"[ftf@fCf<,ìÅ□V,ì,à,ì,É□#,í,¹,Ü,-□B

^3kŽžA<α—L^á"½,ì,Å,éftf@fCf<,ðŠÜ,pê#A,»,é,ç,ìftf@fCf<,ì^3k,ð"ò,î,μ,Ä^3k,μ,Ü,·B
'ã•\“l,Éftf@fCf<,Æ,μ,Ä 'Win386.swp' “™,ª, ,è,Ü,·B

f“fOftf@fCf<-¼, ìftf@fCf<, ð^³k, μ, æ, æ, Æ, μ, ½ê#AMS-DOS Ć Ž®, ìVf# [fgftf@fCf<-
¼, É, μ, ĀŠi”[, ·, é, æ, æ, É, É, è, Û, ·B

Šù'ŋ, Ì'ĈÉ, É" -¼, ìftf@fCf<, ð, , éê#A, æ, è"ú•t, ÌV, µ, ç, à, ì, Ý, ð'Ç
%oÁ^³k, µ, Ä'ĈÉ, ðXV, µ, Û, ·B

MS-DOS "Å, ĺŽ © Œ È % º ð " € □ ' Œ É, ð □ ï □ ¬, μ, Ü, · □ B
Š ĩ " [f t f @ f C f < , º f □ f " f O f p f X - ¼, ¾, Æ, W □ D, R • ¶ Ž š, É □ Ø, è, Â, ß, ½ f t f @ f C f < - ¼, Å Š ĩ " [, º, ê, Ü, · □ B
, È, é, x, □ C f □ f " f O f t f @ f C f < f l □ [f € , ĺ Ž g, í, È, † — l, È, ·, é, x, «, Å, · □ B

Win32 "Å,İŽ©ŒÉ%øđ"€ŒŒÉ,đìŒŒŒ,μ,Ū,ŒB

uŽ“@ŽÀsvAuŽ“@ǎ‘,«vAu%üâ,f`fFbfNv,ďŽw’è,Ā,«CX,Éx,©,čÝ’è%Ā\
,É WIN32 "ĀŽ©ĈĚ%ď“€’ĈĚ,ìì¬,ª,Ā,«,Û,·B

-3^3□k, iC`Ž®, Ā, ·□B

'lh5',í LHA Ver 2.13 ĀŸŠ·,ì^³k-@,Ā,·B
Ā'ĀÉ,đ"z•z,·,é•K—v,ì, ,éĀ'ĀÉ,ĀA'ÉĀí,±,¿,ç,ì^³kĀÉ`Ž®,đ,Žg,ç,,¾,¾,çB

'lh6',í LHA Ver 2.6x ^È~,"Å,ÆŒÝŠ,ì^³k-@,Å,
'lh6',í 'lh5',æ,è^³k-|,ª-Ç,ç,Å,·B
,½,¾,µALHA Ver 2.50 ^È~,"Å,È,ç,Æ"WŠJ,ªs,!,Ü,¹,ñB

'lh7',í 'lh6',æ,è,³,ç,É³□k—l,^a—Ç,ç□é□†,^{a'}½,ç,Å,·□B
LHA Ver 2.6x□ALHA32 ,Å,í,Ý“WSJ,Å,«,Ü,·□B

CABftf@fCf<,i^3kžž,iY'èf_fCfAfOf{fbfNfX,ð•\Ži,μ,Ü,·B

ZIPftj@fCf<,ì³□kŽž,ì□Ý'èf_fCfAf□fOf{fbfNfX,đ•\Žì,μ,Û,·□B

GZIP ftj@fCf<,i^³kŽž,iY'èf_fCfAfOf{fbfNfX,ð•\Ži,µ,Ü,·B

ftfHf<f_àŠÜ,ß,Ä^³k,·,éêê#AftfHf<f_ì'©«,È,Ç,ìftfHf<f_î•ñ,à'ÆÉ,ÖŠi"[,³,ê,Ü,·B

fCf“fXfg[]f%oo, ©, çfCf“fXfg[]f<, μ, ½è#̂, ÍAffffHf<fg, Åf`fFbfN, ³, è, Ä, ç, Ü, ·B
fGfNfXfvf[]f%oo<@”\Šg’£[]ifVfFf<fGfNfXfef“fVf#”[]j, ³—LÆø, Æ, È, è, Ü, ·B

fGfNfXfvf[]f%oo<@"\Šg'£[]ifVfFf<fGfNfXfef"fvf#f"[]j,ª-³Œø,Æ,È,è,Û,·[]B

ufGfNfXfvf[f%<@"\Šg'£ifVfFf<fGfNfXfef"fVf#f"vjv ,ìÚ×,ÉÝ'è,ð, ",±,È,ç,Ü,·B
fGfNfXfvf[f%,lfjff...[,É'Ç%Á,·,éŠg'£fjff...[@"\,ìA'Ç%Á,âíœ"™,ð, ",±,È,ì,Ü,·B

Šg'£f[]ff...[][, ©,ç,ì%øđ“€,ìŽÀ[]s,ì[]Ú,É%øđ“€[]æ,đŽQ[]Æ,·,éf_fCfAf[]fOf{fbfNfX,đ•\Ž|,·,é,æ,π
,É,È,è,Ú,·[]B

Šg'£f[]jf...[][, ©, ç, ì'ĀÉÉ[]î-Āĕā[]A, » , ì'ĀÉÉ, đ Explzh , ©, çŠ, ©, È, †, æ, †, É, È, è, Ü, ·[]B

LZH ftj@fCf<,â ZIP ftj@fCf<,lfAfcfRf“,Öfhf[]fbfv,μ.Ä^3[]k,Å,«,é[]Ý'è,É,μ,Ä,†
,é[]é[]#[]A,»,ê,ç,Éfhf[]fbfv'Ç%°Ä^3[]k,·,é[]Û,É[]u^3[]k,ìŠm”F[]vf_fCfAf[]fOf{fbfNfX,ð•\Ž!,·,é,æ,π
,É,É,è,Û,·[]B

%ođ“€Œă,É%ođ“€æ,łftfHf<f_,đfGfNfXfvf[]f%o,ÅŠ),,æ,ɹ,É,È,è,Û,·B
Šg'£f[]fj...[][,©,ç,ì”®[]ì,ì,Ý,É—LŒø,ÉŸ'è,Æ,È,è,Û,·B[]uf[]fv[]V[]f[]f[]“[]v-[]u,»,ì¼[]v,ì”-¼,ì€-
Ú,Æ,ì•ÉŸ'è,Å,·B

Šg'£f□fjf...□l,©,ç,ì'ĀÉÉ□ì□¬,ì□Ū□A□'ĀÉÉ-¼,ìŠg'£Žq,đ□œ,ç,½ftf@fCf<-
¼,Ā□'ĀÉÉ,ìftfHf<f_,đ□ì□¬,μ□A,»,ìftfHf<f_,É%øđ"€,·,é,æ,α,É,È,è,Ū,·□B
Šg'£f□fjf...□l,©,ç,ì"®□ì,ì,Ÿ,É—LĀø,É□Ÿ'è,Æ,È,è,Ū,·□B□ufifvfVf#f"□v-□u,»,ì¼□v,ì"-¼,ì□€-
Ū,Æ,ì•É□Ÿ'è,Ā,·□B

ffftjHf<fg,Å,í SendTo fGfNfXfef“fVf#f“,ìu%øð“€v,©,ç,ì•;““‘ŒÉ,ì~A’±%øð“€
,Å,ì‘ŒÉftf@fCf<^êŒĀX-^,É%øð“€æftjHf<f_,ðŽw’è,μ,È,,Ā,í,È,è,Û,¹,ñ,²A,±,ì
—“,ðf`fFfbfN,·,é,ÆA,í,¶,β,ÉŽw’è,μ,½ftjHf<f_,ÉuftjHf<f_,ìŽw’èv,íf_fCfAf□fO,ðo,³,,É^ê<C,É
%øð“€,·,é,æ,α,É,È,è,Û,·B□u%øð“€æ,ìŽw’èf_fCfAf□fOf{fbfNfX□v,ð•\Ž!,μ,È,ç□Y’è,É,μ,Ā,ç
,é□ê□#,É,ìA□ufIfvfvf#f“□v-□uftjHf<f_□v-□u
%øð“€æftjHf<f_□v,Ā□Y’è,μ,½ftjHf<f_,ÉŠm”F,È,μ,Ā^ê<C,É%øð“€,μ,Û,·□B

Šg'£f[]fj...[][, ©, ç, ÌŽÀ[]sCEã[]AfGfNfXfvf[][]f%oo, ã[]X[]V, ³, ê, , ÉŽÀ[]sCEã, Ìftj@fCf<, ã•\
Ž!, ³, ê, É, ç[]ê[]#, Éf`fFfbfN, μ, Ā, ", ç, Ā, , ¾, ³, ç[]B%oođ"€CEã, ÉfGfNfXfvf[][]f%oo, đ[]X[]V, ·, é, æ, π
, É, È, è, Û, ·[]B

Šg'£f[]jf...[][, ©,ç,ì'ŒÉ[]ì-Œă[]A,»ì'ŒÉ,đ Explzh , ©,çŠ, ©,È,ç,æ,ꝛ,É,È,è,Û,·[]B

Šg'£f[]ff...[][,i[]u[]'ĀÉ[]i[]-[]vŽÀ[]sĀã[]A[]'ĀÉ[]i[]-f_fCfA[]f[]fO,đ•\Ži,μ,Ü,·[]B

ffftjHf<fg,Å,í LZH Ć`Ž® ,Å'ĆÉ,đ[]¬,μ,Ü,·[]BLZH ^ÈŠO,ìĆ`Ž® ,Å'ĆÉ,đ[]¬,μ,½,ċê[]†,í,±
,ífRf“f{f{fbfNfX, ©,çffftjHf<fg,ì[]'ĆÉĆ`Ž® ,đŽw'è,μ,Ä,,¾,³,ċ[]B

□u³□k□v□u%◊đ“€□vfAfCfRf“,đ•ĩ□X,μ,½,¢□ê□‡,Í,±,İf{f^f“,đfNfŠfbfN,μ,Ü,·□B

f`fFfbfN,Å%øð“€CEä,É%øð“€æ,ìftjHf<f_,ðfGfNfXfvf□□[f%ø,ðŠ],,æ,α,É,È,è,Û,·□B
fVfFf<fGfNfXfef“fVf#f“,Å,ì“-¼,ì□€-Ú,Æ,Í•Ê□Ý'è,Å,·□B

f` fFfbfN,Å'ÆÉ-¼,ìŠg'£Žq,ðœ,ç,½-¼'O,ÅftfHf<f_,ðì¬,μA,»,±,ÖêŠ,É%øð"€,μ,Û,·B
fVfFf<fGfNfXfef"fVf#",Å,ì"-¼,ì€-Ú,Æ,í•ÊÝ'è,Å,·B

f`fFfbfN,Åu%øđ“€æ,İŽw’èvf_fCfAfO,đ•\Ž!,μA-čf`fFfbfN,Å”ñ•\Ž!,É,μ,Ü,·B

fVfFf<fGfNfXfef“fVf#”,Å,ì”-¼,ì€-Ú,Æ,Í•Ê,ìÝ’è,Æ,È,è,Ü,·B

!-čf`fFfbfN,ì”ñ•\Ž!,ìÝ’è,ìê#̄,É,ÍAufIfvVf#”v-uftfHf<f_v-u
%øđ“€æ,İŽw’èv,ÅÝ’è,μ,½ftfHf<f_,É%øđ“€,³,è,Ü,·B

f`fFfbfN,·,é,ÆŽŽCE±ŽÀ□s,Ā,İSm" Ff□fbfZ□[fW,đ•\Ž!,μ,Ü,¹,ň□B

Ši" [ftf@fCf<,đ'å•ŃŽš,Å•\Ž!,·,é,æ,ɣ,É,È,è,Ü,·□B
□→•ŃŽš•\Ž!,Å,í'WIN',Æ,č,ɣftfHf<f_,Æ'win',Æ,č,ɣftfHf<f_,í<æ•Ê,μ,Ü,·,ª□A'å•ŃŽš•\
Ž!,Å,í'WIN',à'win',à"~,ŃftfHf<f_,Æ,Ý,È,μ,Å•\Ž!,μ,Ü,·□B
ZIP,ÆTARCE`Ž® ,ì□'CEÉ,ì□é□#□Af`fFfbfN,μ,Å,à'å•ŃŽš•İŠ,í,μ,Ü,¹,ň□B

f`fFbfN,·,é,Æ ESC fL[] ,Å Explzh ,ð[]—¹,μ,Û,·[]B

f`fFfbfN,·,é,Æ^³kE%øð“€ó<μ,İf_fCfAfO,ð•\Ž!,μ,Û,·B

f`fFfbfN,·,é,Æ^³kE%øð“€Œă,ìŒ<%øÊfO,ð•\Ž!,μ,Û,·B

f` fFfbfN,·,é,Æ□AŠù,É Explzh ,ª□‘ŒÉ,đŠJ,č,Ä,č,é□ó‘Ô,Å,à,Q,Â^È□ã,ì□‘ŒÉ,đ“~Žž,ÉŠJ,Ž-
,ª,Å,<,é,æ,κ,É,È,è,Û,·□B

□u%øđ“€ŒăfGfNfXfvf□□[f%øø,ì<N“®□vf`fFfbfN□A□u□‘ŒÉ-¼,ÅftfHf<f_□ì□¬□v,đf`fFfbfN,É,μ,Ä,ç
,é□ê□#□AfffHf<fg,Å,í,Đ,Æ,Â□ă,ìftfHf<f_,©,çfGfNfXfvf□□[f%øø,đŠ],ç,Ä,ç
,Û,·,³□Af`fFfbfN,·,é,Æ□ì□¬,μ,½ftfHf<f_,đŠ),,æ,α,É,É,è,Û,·□B

f`fFfbfN,·,é,Æ Explzh ,lfXfe[f^fXfo["à,ìi'»ó<μ·\Ž!,Å,íA'S'ì,ì^—ó<μ,đ,đ·\Ž!,·,é,æ,κ
,É,É,è,Û,·B

f`fFfbfN,·,é,Æ□u'S,Ä,lfAfCfRf"·\Ž!□v□Ý'è,^a•Ů'¶,³ê□AŽŸ%oň<N"®Žž,É,à"½%of,³ê,Ů,·□B
□! 'òŽR,ÌŠi"[ftf@fCf<,^a, ,é□é□†,â□AfTfCfY,ì'â,«,†Ši"[ftf@fCf<,lfAfCfRf",đ•\
Ž!,·,é,É,ÍŽžŠŌ,^a,©,©,Á,Ä,μ,Ů,†,Ů,·,ì,Ä'□^Ó,μ,Ä,³/₄,³,†□B

f`fFfbfN,·,é,Æ'O%oñ□□□□,μ,½^³□kCE`Ž®,³fftfHf<fg,É,È,è,Û,·□B

f`fFfbfN,·,é,ÆŠù‘¶,ì‘œÉ,Ö,ì’Ç%°Á^³k,Å,íŠm”F,μ,È,,È,è,Ü,·B

f` fFfbfN,·,éŽ-,Āf_fuf<fNfŠfbfN“™,i<N“@,Ā,íu%ø“€æ,ìŽw’èv,ìf_fCfAfO,ð•\Ž!,·,é,æ,κ
,É,È,è,Û,·B‘ĀÉftf@fCf<,É Explzh ,āŠÖ~A•t,¯,³,ê,Ā,ç,ééè‡,ì,YAÝ’è,ā”½%of,³,ê,Û,·B

íu%ø“€æ,ìŽw’èv,ìf_fCfAfO,ð•\Ž!,³,¹,,ÉA!íA%ø“€,ð,“,±,È,ç
,½,çéè‡,É,íAíuŠm”Ff_fbfZ[fWvfcfŠ[íu%ø“€æ,ìŽw’èf_fCfAfOf{fbfNfXv,ð•\
Ž!,μ,É,çv,ðf` fFfbfN,μ,Û,·B

f` fFfbfN,·,é,ÆŠi"[ftf@fCf<,đ'ı'đ,μ,Ä,ı%oEfNfŠfbfNf[]fj...[][,ÍfGfNfXfvf[][]f%o,İf[]fj...
[][,Æ"~,¶,à,ı,Å•Žı,·,é,æ,ɹ,É,È,è,Ü,·[]B

f`fFbfN,·,é,Æf□fjf...□["à,lfrrbfqf}fbfvfAfCfRf",đ•\Žı,μ,È,,È,è,Ü,·□B

f` fFfbfN,·,é,Æ<N“®Žž,É□‘ŒÉfŠfXfg,đf□[fg,¹,·,É·\Ži,μ,Ü,·□B

f`fFfbfN,·,é,Æ<N“®Žž,É□‘ŒÉfŠfXfg“à,ì□¶,ìfcfŠ□[,đ‘S,ÄŠ],č,Ä•\Žì,μ,Û,·□B

Ši" [ftf@fCf<,đf}fEfX,Åf]fCf"fg,·.éŽ-,Å'1'ð□ó'Ô,É,μ□Afvf"fOf<fNfŠfbfN,ÅŠ),̄,é,æ,ɹ,É,È,è,Ü,·□B

Ši" [ftf@fCf<,đf}fEfX,Åf]fCf"fg,·,éŽ-,Å'I'ð□ó'Ô,É,μ□Af_fuf<fNfŠfbfN,ÅŠ],¯,é,æ,ɹ,É,È,è,Û,·□B

Ši" [ftf@fCf<,đ^è%ñfNfŠfbfN,·,éŽ-,Å'ı'đ□ó'Ô,É,μ□Af_fuf<fNfŠfbfN,ÅŠJ,¯,é,æ,κ
,É,É,è,Û,·□BMicrosoft Windows ,ıfftfHf<fg,ı"®□ı,Å,·□B

,±,ìf_fCfAf□fO f{fbfNfX,ð•Â,¶□A•ï□X“à—e,ð•Û‘¶,μ,Û,·□B

• ĩ X, ³, ê, ½ " à — e, ð • Ū ' ¶, ¹, ,, É □ A, ±, ì f _ C f A f □ f O f { f b f N f X, ð • Â, ¶, Ū, · □ B

, ±, ìf_fCfA fñfO f{fbfNfX, đŠ, ç, ½, Ü, Ü□A•ĩ□X“à—e, đ•Ů‘¶, μ, Ü, ·□B

00-CEä, 0'CEÉftf@fCf<-¼, đŽw'è, μ, Ä, ,¾,³, çBŠg'£Žq, í"Á, ÉŽw'è, μ, È, ,Ä, à—Ç, ç, Å, ·B
0:0ufjfvfVf#f"0v, ©, ç0'CEÉ, ì "00-0æftfHf<f_" , đŽw'è, μ, Ä, ", ,Æ•Ö—~ , Å, ·B

^3kCE`Ž®,đ'đ,μ,Ä,,¾,³,čB(ffftfHf<fg,Å,í LhaCE`Ž®,ì^3k,É,È,Á,Ä,Ü,·)

^3k i'ĀÉ,ìì-òj,đŠŽn,μ,Û,·B

□'ŒÉ<κ'Ê,ì□Ý'è,âŒ`Ž®•Ê,ìŒÅ—L,ìffftfHf<fg,ì□Ý'è,ð,¨,±,È,ì,Ü,·□B

□'ŒÉ□î□¬Œă□A□î□¬,μ,½□'ŒÉ,đ Explzh ,©,çŠ,«,Û,·□B

□'CEÉ□ì□→CEä□A'í'δ,μ,½^3□k'î□Ûftf@fCf<,δ□í□œ(,²,Ý" ^Ú"®),μ,Û,·□B

□'CEÉ□ì□¬CEä□A□ì□¬,μ,½□'CEÉ,δ"C^ÓJfCfY,É•^aŠ,,,μ,Ü,·□B

00-CEä, 0'CEÉ, 3A03, μ, 00-Λ, «, Ä, φ, é, ©uCRC , j`fFbfNv, ðs, φ, Ü, ·B

,±,ìfAfcfrf",đfNfšfbfN,·,éž-,Å□A'¼,ìĀ`ž®,ì□'ĀÉ,ìžw'è,â^³□kfĀfxfç,È,Ç,đ•ï□X,Å,«,Ü,·□B

[L]f{f^f",Å'ĀÉ-¼,đ'â•ŕŽš"ŕ•ŕŽšA
[U]f{f^f",Å'ĀÉ-¼,đ"ŕ•ŕŽš"ŕ'â•ŕŽšA
[O]f{f^f",Å'ĀÉ-¼,đfjŖŖfjŖ<-¼(^³kĀ³ftf@fCf<,ì,Û,Û),É•İŖ,μ,Û,ŕB

00-0æftjHf<f_ ,Å, ·0B
00-0æftjHf<f_ ,íA%0E'x, ìufffXfNfgfbfvfAfCfRf"vAuf}fCfhfLf...
f"fgfAfCfRf"vfRf"f{f{fbfNfX, ©, ç, ì—š—ð, âužQ/Ævf{f^f", ©, çŽw'è, μ, Ü, ·0B

□□¬,·,é□'ŒÉ-¼,đŽw'è,μ,Û,·□B

"^³kĒã,ì"®i" fOf<[fv,ìÝ'è,ðA'O%ñ,ìÝ'è"à—e,É•ĩX,μ,Û,·B

f`fFfbfN,·,é,Æ□AŠe□'ŒÉŒ`Ž® ,ìŸ'èf^fu,đí,É•Ž|,·,é,æ,κ,É,È,è,Ü,·□B

f`fFfbfN,·,é,Æ□AŽw'è,μ,½□'ĀÉĀ`Ž® ,đ<L%̄ ,μ□AŽŸ%ñ,ì□'ĀÉĀì□¬Žž,É,Í,» ,ì<L
%̄ ,μ,½□'ĀÉĀ`Ž® ,đffftjHf<fg,Åì□¬,·,é,æ,α,É,É,è,Û,·□B

•ªŠ,,.·.éftf@fCf<,ðŽw'è,μ,Û,·□B

fGfNfXfvf□□[f%oo,©,çftf@fCf<,ð'l'ð,μ,Äfhf%ofbfO□·fhf□fbfv,·,éŽ-,Å,àŽw'è,Å,«,Û,·□B

•Š,,,:éftj@fCf<,ďŽw'è,:.é□ufRf,f“f_fCfAf□fOf{fbfNfX□v,ď<N“® ,μ,Ü,·□B

•Š,,ÆãA•Š,,æ,ìftHf<f_đfGfNfXfvf[]f%o,©,çŠJ,«,Û,·B

,±,ìf_CfAf□fOf{fbfNfx,ð•Â,¶,Ü,·□B

•Š,„æftjHf<f_,đŽw'è,μ,Û,·B

fGfNfXfvf[]f%o,©,çftjHf<f_,đ'l'đ,μ,Äfhf%ofbfO•fhf[]fbfv,·,éŽ-
,Ä,à•Š,„æftjHf<f_,đŽw'è,Ä,«,Û,·B

•Š,,ftf@fCf<fTfCfYŽw'è,μ,Û,·□B

%E~e,lfXfsf“f{f^f“,đfNfŠfbfN,·,é,Æftf@fCf<fTfCfY,ªā%º,μ,Û,·□BSHIFT fL□[,đ
%Ÿ,μ,É,ª,çfNfŠfbfN,·,é,Æ 1MB'P^É,Åā%º,μ□ACTRL fL□[,đ%Ÿ,μ,É,ª,çfNfŠfbfN,·,é,Æ
100KB'P^É,Åā%º,μ,Û,·□B
%ºCEÀ,Í 128KB□AāCEÀ,Í 3.99GB ,Û,Å,Å,·□B4GB ^Èā,íŽw'è,Å,«,Û,¹ñ□B

f{f^f“,đfNfŠfbfN,·,éŽ-,ÅAFD ,lfffBfAfTfCfY,ì'đffjf...[,đ•Ž!,μ,Ü,·B

,±,ìf{f^f“,©,çfŠf€□[fofuf<fffBfXfN,ì—e—Ê,ðŽæ“¾,μ,Ä•ªŠ,,fTfCfY,ÉŽw'è,Å,«,Ü,·□B

ftf@fCf<•ªŠ,,ðŽÀ□s,μ,Ü,·□B

æ“@ftj@fCf<,É '*_001.exe' ,Æ,μ,½ftj@fCf<-¼,Å Win32—p,İŽ©ĈÈ~ACE<fvf[]fOf%of€
,ð[]i[]¬,μ,Û,·[]B

Ž©ĈÈ~ACE<fvf[]fOf%of€,í[]A~ACE<[]æftjHf<f_ì'ì'ð<@"\
[]Aftj@fCf<'@[]«,ì[]ĀĈÈ»[]Af^fCf€fXf^f“fv,ì•œĈÈ³[]Aftj@fCf<fTfCfY,ìf`fFfbfN,ð[]s,ç,Û,·,ì,Ā
"fofbf`ftj@fCf<" ,ì[]ê[]‡,æ,è,±,¿,ç,ì•û-@,Ā•œĈÈ³,·,é,±,Æ,ð[],[]\$,μ,Û,·[]B

ftf@fCf<•ªŠ,,æ,žw'è,·,é^x,ÉŽQ□Æ,·,é□uftjHf<f_,ìŽQ□Æf_fCfAf□fOf{fbfNfX□v,đ<N“®,μ,Û,·□B

%øð“€æftHf<f_ðŽw’è,μ,Û,·B
fGfNfXfvf[]f%ø,©,çftHf<f_ðfhf[]fbfv,μ,ÄftHf<f_-¼,ð“ü—í,·,éŽ-,à,Å,«,Û,·B

□'ŒÉ-¼,İŠg'£Žq,đ□œ,†,½ftf@fCf<-¼,Å□'ŒÉ,İftfHf<f_,đ□İ□¬,μ□A,»),İftfHf<f_,É%ođ"€,μ,Ü,·□B

%ođ“€æ,É“-

¼,iftf@fCf<,³‘¶Ÿ,·,éêê#A□u□ă□’,«Šm”F□vf_fCfAf□fOf{fbfNfX,Å□ă□’,«,ìŠm”F,đ,μ,Ä,«,Ü,·□B
□! □uflfvfVf#f”□v-□u%ođ“€ŽžflfvfVf#f”□v,ì□u“ú•t,¯,ì□V,μ,çftf@fCf<,ì‘¶Ÿ,đ-³Ž<,μ,Ä“WŠJ□v,³-
çf`fFfbfN,¾,Æ□A,±,ìflfvfVf#f” ,í-³Æø□i’P□F•\Ž!□ó’Ô□j,Å,·□B

%ođ“€CEã□A%ođ“€□æ, òftfHf<f_ ,đfGfNfXfvf□□[f%o, ©, çŠ, «, Û, ·□B

%ođ“€„đŽÀ□s„μ„Û„·□B

%øð“€„ð„”„±„È„í„„Af_fCfAf□fO„ð•Â„¶„Ü„„□B

%ođ“€æftfHf<f_đŽQÆ,·,é^x,ìf_CfAfOf{fbfNfX,đ•\Ž!,μ,Ü,·B

%oB<Ž,É%ođ“€„μ,½□u%ođ“€□æftfHf<f_„ì—š—đ□v,đ□í□œ„μ,Û,·□B
□u%ođ“€□æftfHf<f_„ì—š—đ□v,í□A,±,ìf_CfAf□fOf{fbfNfX,©,ç%ođ“€„đŽÀ□s,·,é“x,É□uftfHf<f_-
¼(F)□v,ìfRf“f{f{fbfNfX,É□V,μ,ç□‡,É 20 ĄĀ,Ů,Ā,ā<L~^,³,ê,Ā,ç,Û,·□B

• Š, Ā (f}f<f`f{fŠf... [f€Ā) , ãA'±%øđ“€ , ð, ¨ , ±, È, ç, Û, · B
i CAB "Åf}f<f`f{fŠf... [f€Ā, É, ï A~A'±%øđ“€ , ã, ¨ , ±, È, Ì, Û, · B

%øđ“€æftfHf<f_đŽQÆ,μ,Û,·B

%øEfNfŠbfNfjff...[.Å,íAfGfNfXfvf[f%ø,ìfjff...[.Æ““™,ì,à,ì,ø•Ž!,μ,Û,·B

'l'đ,³,ê,½fcfŠ[]ftjHf<f_ ^È%ooº,ÉftjHf<f_,đ[]i[]¬,μ,Ü,·[]B
[]! Windows ,lĈĀ,çfo[]fWf#f“,Ā,í,±,±,if{f^f“,ª<@“\,μ,È,çŠĀ<<,à, ,è,Ü,·[]B,»,i[]ê[]‡,í-³Ĉø('W[]F•\
Ž!),³,ê,Ā,ç,Ü,·[]B

'l'đ,³,ê,½ftjHf<f_ì-¼'O,ì•ïX,đ,"±,È,ç,Û,·B
! Windows ,lĒĀ,çfo[fWf+f",Ā,í,±,±,ìf{f^f",a<@"\,μ,È,çŠĀ<<,à, ,è,Û,·B,»,ìê±,í-³Ēø('W\F•\
Ž!),³,ê,Ā,ç,Û,·B

'l'đ,³,ê,½ftjHf<f_đíœ,μ,Ü,·B
! Windows ,lĒĀ,çfo[fWf#f“,Ā,í,±,±,ìf{f^f“,a<@“\,μ,È,çŠĀ<<,à, ,è,Ü,·B,»,ìê±,í-³Ēø('W\F•\
Ž!),³,ê,Ā,ç,Ü,·B

,±,ìf`fFbfN,ð“ü,ê,Ä,“;Ž-,Å“ÆÉ“à,ìtf@fCf<,ì,Ý,ðŽw`èftfHf<f_,Ö“WSJ,μ,Ü,·□B
□%ŠúŽž,í-çf`fFbfN,Å,·□B

%øđ“€ĈĕăĀĀ‘ĈĖĖ,đ%øø<L,İfGffjBf^f{fbjNfjX,ÅŽw’è,μ,½ftfHf<f_Ö^Ú“©,μ,Û,·ĀB
%øđ“€Ĉĕă,ĖĀ‘ĈĖĖ,đĀŠ’è,İftfHf<f_Ö•Û‘ŋ,μ,Å,“,«,½,çĀĕĀĀ‡,Ė,İ,±,İf`fFfbfN,đ,ç,ĕ,ĀĀA
%øø<L,İfGffjBf^f{fbjNfjX,Ö^Ú“©ĀæftfHf<f_đŽw’è,μ,Å,“,„Æ•Ö—~ ,Å,·ĀB

,±,İfOf<ĀĀfv,İfGfNfjXfvfĀĀĀf%øøă,İĀu‘;Žž%øđ“€ĀvfĀfjf...ĀĀ[,©,çŽÀĀs,μ,½ĀĕĀĀ‡,İ,Y—
LĈĖø,Å,·ĀB

□'CEÉ,ì^Ú"®□æftjHf<f_đŽw'è,μ,Û,·□B
%oE,ì "<<" f{f^f", ©,ç□AfcfŠ□[ftjHf<f_ì'l'đ,³,ê,^{1/2}fpfX,đŽw'è,Å,«,Û,·□B
%ođ"€CEã,É□'CEÉ,đ□í□œ,μ,^{1/2},ç□ê□‡,Ífhf□fbfvf_fEf"fŠfXfg"à,©,ç□u,²,Ý" □v,đ'l'đ,μ,Ä,,^{3/4},³,ç□B

,±,ìfOf<□[fv,ÍfGfNfXfvf□□[f%□ã,ì□u';Žž%ođ"€□vf□fjf...□[,©,çŽÀ□s,μ,^{1/2}□ê□‡,ì,Ý—
LCEø,Å,·□B

fcfŠ[]ftfHf<f_ì'ì'ð,³,è,½fpfX,ð¶,ìfGfffBf^f{fbfNfX,ÖŽw'è,Å,«,Ü,·B

,±,ìfOf<[]fv,íGfNfXfvf[]f%ã,ìu'Žž%ð“€vf[]fjf...[],©,çŽÀs,μ,½ê‡,ì,Ý—
LCEø,Å,·B

f`fFfbfN,·,éŽ-,ÅAã<L,ÅŽw'è,³,ê,½^Ú“®æ,É'CEÉ-¼,ÅftjHf<f_,ði□¬,μA,»,±,Ö^Ú“®,μ,Ü,·□B
^Ú“®æ,Éu,²,Ý” □v^ĚŠO,ðŽw'è,μ,Ä,ç,éê□‡,ì,YŽw'è,Å,«,Ü,·□B

,±,ìfOf<□fv,íGfNfXfvf□□[f%□ã,ìu'!Žž%ð“€vf□fjf...□[,©,çŽÀ□s,μ,½□ê□‡,ì,Y—
LCEø,Å,·□B

f` fFfbfN,·,éŽ-,ĀfpfXf[]fh•t,«,ì'ĀÉ,đì-Ā,«,Û,·B
fpfXf[]fh•t,«'ĀÉ,đì-Ā,«,éĀ`Ž®,đ'í'đ,μ,Ā,Ā,ĀfXf[]fh•t,«'ĀÉ,ìì-,â%oĀ"
,ÉŠĀ«i•K-v,É DLL ,âfCf"fxfg[]f<ï,Ý,íŠĀ«j,É," ,ç,Ā,íA,±,íf`fFfbfNf{fbfNfX,â-
LĀø,É,È,è,Û,·B

fpfXf[]fh•t,«'ĀÉ,É,Ā,ç,Ā,íAZIPĀ`Ž®,Æ YZ1Ā`Ž®,ì'ĀÉ,É,ì,Ý'î%ž,μ,Ā,ç,Û,·BZIP
Ā`Ž®,ífXf[]fh•t,«'ĀÉ,đì-,;é^x,É,í IZIP32J.DLL (v0.04 ^Èã) ,Æ ZCRYPT32.DLL
,ì'g,Ý,í,¹,©A,Û,½,íA"[]fA[]fjCfofvf[]WfFfNfg,lfz[]f€fy[]fW,É, ,é Info-ZIP "Ā ZIP32.DLL
,â•K-v,Ā,·B

f`fFbfN,·,éŽ-,Å YZ1CE`Ž®□'CEÉ,ì□ACEöŠJCE®·ûŽ®fpfXf□□[fh•t,«,ì□'CEÉ,ð□ì□→,Å,«,Ü,·□B
CEöŠJCE®·ûŽ®fpfXf□□[fh•t,«□'CEÉ,í□AYZ1CE`Ž®,ì□ì□→Žž,ì□ê□‡,É,ì,Ý□AŽw'è,Å,«,Ü,·□B

^3k,đŽÀs,μ,Ü,·B

□'ÆÉ,ì□□¬,ðfLfff“fZf<,μ,Ä□Af_fCfAf□fOf{fbfNfX,ð•Â,¶,Ü,·□B

^3kŽž,ìfìvfVf#f“,đÝ'è,μ,Û,·B

,±,ìf_fCfAf□fO f{fbfNfX,ì□à-¾,ð•\Ž!,μ,Ü,·□B
Še□€-Ú,ìfwf<fv,ð•\Ž!,·,é,É,í□Af_fCfAf□fO f{fbfNfX,ì%°E□ă,ì □H ,ðfNfŠfbfN,μ□A-Ú“! ,ì□€-
Ú,ðfNfŠfbfN,μ,Ä,,¾,¾,ç□B

Ši" [ftf@fCf<,lfAfCfRf" ,^a•\Ž|,³,ê,Ü,·□B

Ši" [ftf@fCf<, lftf@fCf<-¼,ª•\Žl,³,ê,Ü,·□B

ftf@fCf<fo[]fWf#f“,^aŽæ“¾4%oÂ“\,ÉŠi”[ftf@fCf<,í,±,±,Éftf@fCf<fo[]fWf#f“,^a•\Ži,³,ê,Ü,·□B

Ši" [ftf@fCf<,iftf@fCf<,iží—p,^a•\Ži,³,ê,Ü,·□B

Ši" [ftf@fCf<,i%ođ"€Āã,iftf@fCf<fTfCfY,^a•\Ži,³,ê,Û,·□B
%ođ"€Āã,ÉfGfNfXfvf□□[f%o,lfvf□pfefB,È,Ç,Å•\Ži,³,ê,éŽÀ□Û,iftfCfY,Æ,È,è,Û,·□B

□'ĀÉ,ÉŠi"[,³,ê,Ä,ç,éftj@fCf<fTfCfY,ª•\Ži,³,ê,Ü,·□B
LHa, ARJ, ZIP Ā`Ž®^ÉŠO,í□'ĀÉ,Ā,í•\Ži,³,ê,É,ç□ê□‡,ª, ,è,Ü,·□B

^3□k—,ª•\Ž1,³,ê,Û,·□B
LHa, ARJ, ZIP Ć`Ž®^ĚŠO,ì□ĆÉ,Ā,í•\Ž1,³,ê,È,č□ê□‡,ª, ,è,Û,·□B

Ši" [ftf@fCf<, a□i□¬, 3, ê, 1/2□A"ú•t, -, ÆŽž□□, a•\Ži, 3, ê, Û, ·□B

Ši" [ftf@fCf<,i'®< ,^a•\Ži,³,ê,Û,·□B
LHa, ARJ Ć`Ž®^ĚŠO,i□ĆÉ,Ā,i•\Ži,³,ê,È,č□é□‡,^a ,è,Û,·□B

Ši" [ftf@fCf<,đ[]-μ,½ OS ,iží—p,^a•\Ži,³,ê,Ü,·[]B
LHa, ARJ Ć`Ž®^ĚŠO,i[]'ĀÉ,Ā,i•\Ži,³,ê,È,č[]é[]‡,^a, ,è,Ü,·[]B

□'ĀÉ,đ□□¬,μ,½ OS ,İŽí—p,^a•\Ží,³,ê,Ü,·□B
LHa, ARJ Ā`Ž®^ĒŠO,İ□'ĀÉ,Ā,İ•\Ží,³,ê,Ē,č□é□‡,^a, ,è,Ü,·□B

Ši" [ftf@fCf<,i^3□kCE`Ž® ,a•\Ži,³,ê,Ü,·□B

Explzh ,lfAfCfRf",^a•\Ži,³,ê,Ü,·□B(^^;

«»ŸŠ,č,Ä,č,é'«É-¼,ª•\Ž,³,ê,Û,·B

CE»ŸŠ,č,Ä,č,é'CEÉ,łtf@fCf<fTfCfY,^a•Ž₁,³,ê,Ü,·B

Ši" [ftf@fCf<,i'□□",^a•\Ži,³,ê,Ü,·□B

Œ» ŸŠ, ç, Ä, ç, é' ŒÉftf@fCf<, à ì ñ, ³, ê, ½ A" ú • t, ¯, ÆŽž, à • Ž, ³, ê, Ü, · B

Ši" [ftf@fCf<fŠfXfg, ðfefLfXfgĀ`Ž®, ĀfNfŠfbvf{ [fh, ÉfRfs [., μ, Ü, ·, B

□'ÆÉ,Ši"[ftf@fCf,fŠfXfg,^a•\Ži,³ê,Ü,·□B

,±,ìf_CfAf□fOf{fbfNfX,ð•Â,¶,Ü,·□B

^3□kŽž,É□œŠO,·,éftf@fCf<,đf□fCf<fh-¼“™,ĂŽw'è,μ,Û,·□B
•i□“Žw'è,·,é□ê□#,í';',Ăftf@fCf<-¼,i,Y,đ<æ□Ø,Ă,ĂŽw'è,μ,Ă,,¾,¾,ç□B
3.17 ^È'O,ìfo□[fWf#f“ ,Ă,ìftfHf<f_đŠÛ,ß,½Žw'è,ª%oÂ”\
,Ă,μ,½,ª□ACE»fo□[fWf#f“ ,Ă,ìftfHf<f_íŠÛ,ß,□Aftf@fCf<-¼,i,Y,đŽw'è,μ,Ă,,¾,¾,ç□B'*' ,ìf□fCf<fh-
¼,ªŽg,i,Û,·□B

—á□F*.obj;debug

OBJftf@fCf<□AdebugftfHf<f_(,Û,½,ìftf@fCf<),đ□œŠO□B

,±,ìfìvfVf#f“ ,í^3□k%oÂ”\,È'CEÉCE`Ž®,ì'S,Ă,É—LCEø,Ă,·□B

MSZIP ,i^3k-@,A^3k,μ,Ü,·B
ffftHf<fg,i^3k-@,A,·B

LZX ,í³□k-@,Å³□k,μ,Ü,·□B
,±,ìĈ`Ž® ,^aŽw'è,³,ê,½□ê□‡,í³□kfĈfxf<,à□Ý'è,Å,<,Ü,·□B

LZX Ć`Ž®,^ažw'è,³ê,½□é□‡,í³□kfĈfxf<,à□ý'è,Ā,«,Ü,·□B'l,^a 15 ,É<ß,ç,Ù,ÇfXfs□[fh□dŽ<□A'l,^a 21
,É<ß,ç,Ù,Ç³□k—!□dŽ<,Æ,É,è,Ü,·□B
□Ú□x,í CAB32CMD.TXT ,ì□u³□k•úŽ®,ìžw'è□v,đŽQ□Æ,μ,Ä,,³/₄,³,ç□B

^3kfxf<,iŽw'è,a,¨,±,È,ç,Ü,·B1`9 ,i"íí,ÅŽw'è,Å,«,Ü,·B1 ,ÅfXfs[fh dŽ<C9 ,Å^3k—
! dŽ<,Æ,È,è,Ü,·B%Šú'l,í 6 ,Å,·B

□'CEÉCE`Ž® ,đ•İŠ·,μ,Ä•Û'¶,·,é□ê□‡,ÉŽw'è,μ,Û,·□B
f`ffbfN,μ,Ä,ç,È,ç□ê□‡,í□A□'CEÉCE`Ž® ,ı•İŠ·,ı,¨,±,È,ç,Û,¹,ñ□B

• ĪŠ, , éŀ'ŒÉŒ`Ž® ,đŽw'è,μ,Ū,ŀB

œ»Ÿ“o~^,³,ê,Ä,ç,éŸŒfg,ª•\Žl,³,ê,Û,·B
V<K,ÉŸŒfg,ðì¬,μ,½,çê‡,É,ÍuV<KŸŒfgvf{f^f“ASù‘¶,ŸŒfg,ð•ÒW,μ,½,çê‡,É,Í•
ÒW,μ,½,çŸŒfg,ð‘đ,μAufŸŒfg•ÒWvf{f^f“,ðNfŸbfN,μ,Ä,,¾,³,çB

'l'đ,³,ê,½fŠfXfg,ì^³k,đŽÀs,μ,Û,·B
•i"l'đŽž,É,l'đ,³,ê,½,·,x,Ä,lfŠfXfg,ì^³k,đŽÀs,μ,Û,·B

□V<K,ÉfŠfXfg'èĈ^³□kftf@fCf<fŠfXfg,đ'Ç%Á,μ,Û,·□B

'l'đ,³,ê,½fŠfXfg,ì•Ò□W,đ,¨,±,È,ç,Û,·□B

'l'đ,³,ê,½fŠfXfg,đíœ,μ,Û,·B

fwf·fvftf@fCf,đŠJ,«,Û,·□B

,±,ìf_CfAfffO,ð•Â,¶,Ü,·□B

'èĒ^³kfŠfXfg,ì•ÒW

V<K,É^³kftf@fCf<fŠfXfg,ì•ÒW,đ,"±,È,ç,Ü,·B

! •ÒW,³,ê,½"à—e,í Explzh ,ì'¶Y,·,éftfHf<f_ "à,É Explzh.ini ,Æ,μ,Ä•Û'¶,³,ê,Ü,·B

Še€-Ú,ìfwf<fv,đ•Ž!,·,é,É,ÍC-Ú"l,ì€-Ú,đfNfŠfbfN,μ,Ä,,¾,³,çB

既存リスト編集

作成先フォルダ名(M): F¥

書庫ファイル名(F): テキスト.lzh

圧縮ファイルリスト(L):

E:*.*txt	追加(A)	編集(E)	削除(D)
E:*.*doc			
E:*.*readme			
E:*.*readme.*			

格納形式(T):

相対ディレクトリ形式 絶対ディレクトリ形式

OK キャンセル(O) ヘルプ(H)

OK キャンセル(O) ヘルプ(H)

V<K,ÉfŠfXfgiñ,·,éê±,É,í,±,ì–“,É‘ĈÉ,ìiñ–æ,ìtjHf<f_¼,đŽw’è,μ,Ä,,¾,¾,çB

“, ìu ì -æ, ìftHf<f_¼v, đŽw'è, ·, é^x, ìuftHf<f_ŽQÆf_fCfAfOf{fbfNfXv, đ•\
Ž!, μ, Û, ·B

□V<K,ÉfŠfXfg□ì□¬,·,é□ê□‡,É,í,±,ì—“,É□‘ĀÉftf@fCf<-¼,đŽw'è,μ,Ä,,¾,³,ç□B

^3k,·,éftf@fCf<,đ'Ç%Á,·,é^x,ìuftf@fCf<ŽQÆf_fCfAfOf{fbfNfXv,đ•\Ž!,μ,Û,·B
ifGfNfXfvf[f%ă,iftf@fCf<,đfŠfXfgă,Ö,c•,c,·,éŽ-,Ă^3kftf@fCf<fŠfXfg,đ'Ç%Á,·,é,±
,Æ,à,Ă,«,Û,·B

'l'đ,³,ê,½^³□kftf@fCf<fŠfXfg,ì-¼'O,đ•İ□X,·,é,±,Æ,ª,Ā,«,Ü,·□B

'l'đ,³,ê,½^³kftf@fCf<fŠfXfg,ìíœ,đ,,±,È,ç,Û,·B

^3k,·,éftf@fCf<,lfŠfXfg,Å,·B

^3k,·,éftf@fCf<,đ'Ç%Á,·,é^x,É,íA□u'Ç%Á□vf{f^f“,đfNfŠfbfN,·,é,©□AfGfNfXfvf□□lf
%□ã,iftf@fCf<,đfŠfXfg□ã,Ö,c□•,c,μ,Ü,·B

u'S'iffBfCefNfgfS`Z@v,ifvfvfj",A^3k,d,"±,É,ç,Ü,·B
fftfHf<fg,Å,íu'S'iffBfCefNfgfS`Z@v,A^3k,d,"±,É,ç
,Ü,·B,ªA^3k,·éftf@fCf<,lfpfX,É,æ,A,Å,íuâ'iffBfCefNfgfS`Z@v,ifvfvfj",É•ïX,³,è,Ü,·B
'S'iffBfCefNfgfS(fpfX)C`Z@/â'iffBfCefNfgfS(fpfX)C`Z@,ifvfvfj",É,Å,ç,Ä,íAUNLHA32.DLL
,É•t'®,ì Command.txt ,ì "-jf" flfvfvfj",âu4. Šî€ffBfCefNfgfS,É,Å,ç,Äv,ðŽQÆ,μ,Ä,,¾,¾,çB

uâ'íffBfĀfNfgfŠĀ`Ž@v,ìfìvfvfj" ,Å^³k,ð, ",±,É,ċ,Û,·B
fŠfXfg,ÉŽw'è,μ,½^³kftf@fCf<,ðuâ'íffBfĀfNfgfŠ(fpfX)v,ÅŠi"[,μ,Û,·B

'Š'íffBfĀfNfgfŠ(fpfX)Ā`Ž@/â'íffBfĀfNfgfŠ(fpfX)Ā`Ž@,ìfìvfvfj" ,É,Ā,ċ,Ä,ÍAUNLHA32.DLL
,É•t'®,ì Command.txt ,ì "-jf" fìvfvfj" ,âu4. Šî€ffBfĀfNfgfŠ,É,Ā,ċ,Äv,ðŽQÆ,μ,Ä,,¾,³,ċB

Ⓔ»Ÿ,ìó'Ô,ìŸ'è,ð "Explzh.ini" ,Ö•Û'Ÿ,μ,Äf_fCfAfŸfO,ð•Â,Ÿ,Û,·B

Æ»ÿ,ìó'Ô,ìÿ'è,ð•Û'¶,¹,„,Éf_fCfAfffO,ð•Â,¶,Û,·B

fwf·fvftf@fCf,đŠJ,«,Û,·□B

f_fCfAfffO,đ•\Ž!,·,éŸ'è,ìé#A•\Ž!,³,ê,éffbfZ[fW“à—e,đŠm”F,·,éf{f^f“,Å,·B

,±,ìfGffBf^f{fbfNfX,ì“à—e,³f_fCfAf□fO,É•\Ž!,³,ê,Û,·□B
□!f□fbfZ□[fW“à—e,í□u!□v,ìftf@fCf<,Å□ì□¬,³,ê□A□‘ÆÉ,ì□Å□%,ÉŠi”[,³,ê,Û,·□B

u•\Z|,·,é□v,đf`fFfbfN,·,é,±,Æ,Å "%ođ"€□æ,ì"ü—í,đ<□,β,éf_fCfAfffO (SFX f_fCfAfffO)" ,ª•\
Z|,³,é□A□u•\Z|,¹,·,ÉŽ©"®ŽÅ□s□v,đf`fFfbfN,·,é,±,Æ,Å SFX f_fCfAfffO ,đ•\Z|,μ,É,φ
(%ođ"€□æ,ì"ü—í,đ<□,β,·,É,»),ì,Û,Û%ođ"€□^—□,đ□s,í,¹,é) ,±,Æ,ª,Å,«,Û,·□B
□! fGfNfXfvf□□[f%o□ã,©,ç□uftf@fCf<-¼,đŽw'è,μ,ÅŽÅ□s□v,©,ç,ìfRf}f"fhf%ofCf"fpf
%of□□[f^,Æ,μ,Å "SFX.EXE -n-" "™,Æ "-n-" ,đŽw'è,·,é,ìŽ©"®ŽÅ□s,đ
—}Ž~,Å,«,Û,·□B[WinSFX32M ,ì,Ý]

SFX f_fCfA_fO,lf^fCfjf<,đŽw'è,μ,Û,·□B
SFX □□-ŽŽ,É•\Ž|,³,é,é SFX □Y'èf_fCfA_fO,Ā,ìŽw'è,í-³Ž<,³,é,Û,·□B
“ú-{ĀÉ'Šp•Źš,Ā,R,X•Źš^É“à,É,μ,Ā,,³/₄,³,ċ□B

SFX f_fCfAf□fO,ì ""WŠj□æŽw'èfGfffBfgf{fbfNfX,ìf^fCfjf<" ,ðŽw'è,μ,Ü,·□B
SFX □Y'èf_fCfAf□fO,Å,ìŽw'è,í-³Z<³,é,Ü,·□B
"ú-{CEé'SŠp•¶Žš,Å,R,X•¶Žš^È"à,É,μ,Ä,,³/₄,³,ç□B

SFX f_fCfAf□fO“à,ì ““WŠj□æŽw’èfGfffBfgf{fbfNfX" ,É•\Žì,³,ê,éfftfHf<fg,ì
%øð“€□æ,ðŽw’è,μ,Û,·□B
□u•\Žì,¹,,ÉŽ©“©ŽÀ□s□v,ì□Ý’è,ì□ê□‡,É,í□A,±,±,Å□Ý’è,³,ê,½%øð“€□æ,ÉŽ©“©“I(□□\$“I),É%øð“€
,³,ê,Û,·,ì,Å’□^Ó,ª•K—v,Å,·□B
□ì Žw’è,μ,È,φ□ê□‡,É,í SFX ,ì ,éftfHf<f_ (SFX ,É,Æ,Á,Ä,ÌjffCEf“fg) ,ª□%øŠú’l,Æ,È,è,Û,·□B

fVfXfef€'®◀◻A%◻B,μ'®◻◻,ì•œE³,ð◻s,ç,½,ç◻ê◻‡,Éf`fFbfN,μ,Ü,◻B

,±,İf`fFbfNf{fbfNfX,ðf`fFbfN,·,éŽ-,Å□A□ă□',«Šm”Ff□fbfZ□[fW,ì•\Žì,ð—}□§,·,é,±,Æ,ª,Å,«,Ü,·□B

%øð“€æ,æ,èV,μ,çftf@fCf<,³‘¶Ý,μ,Ä,à,»,ê,ç,íã‘,«,μ,Ä%øð“€,³,ê,Ü,·B

□□¬,μ,½Ž©ŒÈ%øđ“€□‘ŒÉ,đ%ü,´,ñ,³,ê,½,,È,ç□ê□‡,É,Í,±,ìf`fFfbfNf{fbfNfX,đf`fFfbfN,μ,Û,·□B

Ši" [ftf@fCf<,ÉftfHf<f_□î•ñ,Ü,Å,àŠÜ,Ý□A,»,ê,ç,à□ÄŒ» ,μ,Ä%ođ"€ ,đ□s,È,ç,½,ç□ê□‡,ÉŽw'è,μ,Ü,·□B

“WSJÆã,ÉŽ©“®“l,ÉŽÀs,μ,½,çfjffOf%of€“™,ª, ,éêê±,É,íA,±,±,ÅÝ'è,μ,Ü,·B; SFX
Ý'èf_cjAfffO,Å,ìžw'è,í-³Ž<,³,ê,Ü,·B

"%ođ“€ŒăŽÀ□sftf@fCf<“ ,đŠi”[ftf@fCf<fŠfXfg, ©,çŽQ□Æ,μ,Û,·□B

"ŠÖ~A•t, ¯,žw'è" ,đ□Ý'è,μ,Û,·□B[WinSFX32M □ê—p]

ŠÖ~A•t, -, ìŸ'è"à—e^ê—, Å, ·B
, ±, ±, ÅŸ'è, μ, ½, à, ì, SFX ŽÄsEãAWindows , ìfVfXfef€, É"o~^, ³, è, Ü, ·B
'l'đfAfCfef€, đf_fuf·fNfŠfbfN, ·, é, ±, Æ, ÅA'l'đ, ³, è, ½€-Ú, Ì•ÒW, ã, ", ±, È, Ì, Ü, ·B

ŠÖ~A•t, ¯, ð'Ç%oÁ, μ, ½, ç□ê□‡, É, Í, ±, ïf{f^f", ðfNfŠfbfN, μ□A•\
Ž, ³, ê, é□uŠÖ~A•t, ¯, ï□Ý'èf_fCfAf□fO□v, ©, ç□Ý'è, ð□s, ç, Û, ·□B

Ÿ'èfŠfXfg,É'í'ð,³,ê,½Ÿ'è€-Ú,ðíœ,·,éê‡,É,í,±,ìf{f^f",ðNfŠfbfN,μ,Û,·B

□Ý'èfŠfXfg,É'l'δ,³,ê,½□ε-Ú,ì•ĩ□X,δ,¨,±,È,κ□é□‡,É,Í,±,ìf{f^f“,ðfNfŠfbfN,μ,Û,·□B

SFX f_fCfAf□fO“à,ì "ŠÖ~A•t,`Žw'èf`fFfbfNf{fbfNfX,ìf^fCfjf<" ,đŽw'è,μ,Û,·□Bf^fCfjf<,í“ú-
{Ĉè'SŚp•¶Žš,Å,R,X•¶Žš^È“à,É,μ,Å,,¾,¾,ç□B [WinSFX32M □é—p]

"fXf^ [fgf fjf... [.,Ö,ì“o~^" ,đY'è,μ,Û,·B[WinSFX32M [ê—p]

fXf^ [fgf [fjf... ["à, ì "fvf [fOf %of€fOf< [fvftfHf<f_ " ,ìfcfŠ [•\Ž!, Å, · [B
, ±, ±, Å [Y' è, μ, ½, à, ì, ^a SFX ŽÄ [sCEã [AfXf^ [fgf [fjf... ["à, ì "fvf [fOf %of€fOf< [fv"
, É "o~ ^, ³, ê, Ü, · [B
'l' ðfAfCfef€, ðf_fuf<fNfŠfbfN, ·, é, ±, Æ, Å [A' l' ð, ³, ê, ½ [€-Ú, ì •Ò [W, ^a, ", ±, È, Ì, Ü, · [B

,±,ìf{f^f“,đfNfŠfbfN,μA•\Ž|,³,ê,éufvfOf%of€fjif...[[]Ý'èvf_fCfAfO,©,cfXf^[]fgfjif...
[][,Ö,ì'Ç%oÁ“o~^[]Ý'è,đ,,±,É,ç,Ú,·[]B

Ÿ'èfŠfXfg,É'í'ð,³,ê,½Ÿ'è€-Ú,ðíœ,·,éê‡,É,í,±,ìf{f^f",ðNfŠfbfN,μ,Û,·B

SFX f_fCfA f_fO "à, ì "fXf^ [fgf fjf... [., Ö, ì "o ~ ^f` fFbfNf {fbfNfX, ìf^fCfjf<" ,đŽw'è, μ, Ü, · □B
f^fCfjf<, í "ú - {CEê 'SŠp • ¶Žš, Ā, R, X • ¶Žš ^È "à, É, μ, Ā, , ¾, ¾, ç □B

ŠÖ~A•t, ¯, ð□s, ¢Šg'fŽq, ðŽw'è, μ, Ü, ·□B •K, , ' ' , ©, çŽh, ß, é, æ, ¢, É, μ, Ä, , ¾, ¾, ¢□B

ŠÖ~A•t, -, éfvf[]fOf%of€, ìŽÀ[]sftf@fCf<-¼, đŽw'è, μ, Ü, ·[]BfpfX-¼, íŽw'è, ·, é•K—v,ª, , è, Ü,¹, ñ[]B“WŠJ
[]æ, ìfpfX-¼,ªŽ©“®“l,É•t%oÁ,³, è, Ü, ·[]B

ŽÀ□sftf@fCf<,đŠi”[ftf@fCf<fŠfXfg,©,çŽQ□Æ,μ,Û,·□B

fGfNfXfvf[]f%oo,É•\Ži,³,ê,é[]uftf@fCf<,İŽí—p[]v,ðŽw'è,μ,Û,·[]Bf^fCf<gf<,í“ú-
{Æè'SŚp•¶Žš,Å,R,X•¶Žš^È“à[]A”¹/₄Šp,Å,V,X•¶Žš^È“à,É,μ,Å,³/₄,³,ç[]B

fŒfWfXfgfŠ,Ö,ì“o~^,ÉŽg—p,·,éfl□[,đŽw'è,μ,Û,·□B

fXf^[]fgf[]jf...[]"à,lfvf[]Of%of€ftfHf<f_ ^È%º,Ö"o~^,,:éfvf[]Of%of€fOf<[]fv-¼,đŽw'è,μ,Û,·[]B

“o~^,^3,ê,½fvf□fOf%of€fOf<□[fv“à,É“o~^,·,éftf@fCf<,ðŽw’è,μ,Û,·□B,±,±
,ĂŽw’è,^3,ê,½ftf@fCf<,ÍVf#□[fgf]fbfgftf@fCf<,Æ,μ,Ăfvf□fOf%of€fOf<□[fv“à,Ö“o~^,^3,ê,Û,·□B

f v f f O f % o f € f O f < [f v " à , É " o ~ ^ , , : , é f t f @ f C f < , đ Š i " [f t f @ f C f < f Š f X f g , æ , è Ž Q [Æ , μ , Û , · [B

fvf[]fOf%of€fOf<[]fv“à,É“o~^,³,ê,½ftj@fCf<,ì•\Ž|~¼,đŽw’è,μ,Ü,·[]Bf^fCfjf<,í“ú-
{Æè’SŚp•¶Žš,Å,R,X•¶Žš^É“à[]A”¼Šp,Å,V,X•¶Žš^É“à,É,μ,Å,,¾,³,ç[]B

f`fFfbfN,·,é,±,Æ,Å□AŠÖ~A•t,¯,ð□s,ꝛ□ê□‡,ÉŽ-‘O,ÉŠm”Ff□fbfZ□[fWf_fCfAf□fO,ð•\Ž|,·,éŽ-
,ª,Å,<,Ü,·□B

Explzh "ÆŽ©,ìLHAŽ©ÆÈ%øð"€'ÆÉìï¬fEjBfU[fhf_fCfAfffO,©,çŽ©ÆÉ
%øð"€'ÆÉ,ðìï¬,μ,Û,·BŽ©ÆÈ%øð"€'ÆÉ"à,É '\$' '!' ftj@fCf<,ðìï¬,Å,«,Û,·B

%opCEê"ÅŽ©CEÈ%ođ"€□'CEÉ,đ□i□¬,μ,Û,·□B

-³^³k,ÅŠi"[,μ,½,çftf@fCf<,ðŽw'è,μ,½,çéç,Éf`fFbfN,μ,Û,·B,±
,if`fFbfNf{fbfNfX,ðf`fFbfN,·,é,ÆA
%º<LjGffBfgf{fbfNfX,ÅŽw'è,μ,½^ÈŠO,ÉAlzhClzsCzipCpakCarcCzooCarj
,iftf@fCf<,à“~Žž,É-³^³k,ÅŠi"[,³,è,é,æ,α,É,È,è,Û,·B

Žw'è—áF*.jpg;*.gif

,l,æ,π,Éftf@fCf<-¼,ð '* (fAfXf^fŠfN) ,Æ,μ,ÄA, ,Æfhfbfg,ðŠÜ,ß,ÄŠg'£Žq,ðŽw'è,μ,Ä,,¾,³,çB
fGf ifZf~fRf"j,Å<æØ,Á,Ä•j"Žw'è%oÄ"\,Ä,·B
jpg, gif ,É,Ç,lftf@fCf<,ðfA[fjfCfu,·,éè†,É,í,º,ĐŽw'è,μ,Ä,“,«,½,ç—LÆø,ÈfifvfVf†f“,Á,·B-
³^³k,ÄŠi“[,·,éè†,í”ňí,É,‘,Ä‘ÆÉ,ìi,ª,“,±,È,ì,Û,·B

f`fFfbfN,·,é,±,Æ,ÅAfffftHf<fg,Å^Ã+‰»□ifpfXf□□[fh□j□'CEÉ,ðì□¬,μ,Û,·□B

ffftHf<fg,ljpfXf□□[fh,ðŸ'è,μ,Ä,¨,±,Æ,ÅA^Ã+‰»□'CEÉ□□→Žž,É,Í,±,±,ÅŸ'è,μ,½jpfXf□□[fh,ð
—~—p,·,é,æ,α,É,È,è□A^Ã+‰»□'CEÉ□□→Žž,ljpfXf□□[fh“ü—í,ªÉ—ª,³,ê,Û,·□B

ffftHf<fg,lfpfXf□□[fh,đŽw'è,μ,Ü,·□B

-3^3 k, Å' CEÉ ì ñ, μ, Ü, · B

-3^3k,ÅŠi"l,μ,½,çftf@fCf<,ðŽw'è,μ,½,çéç,Éf`fFbfN,μ,Û,·B

