

# EditMTU (Ver 2.0)

## ☰ EditMTU,Æ,Í

• ADSL,đ“±“ü,μ,½,ì,¾,¯,ê,ÇŠú‘Ò,μ,½’-“x,ª“¾,ç,ê,□A□,μ,Å,à’-“x,đfAfbfv,³,¹,½,ç,Æ,ç,±,Æ,Å MTU ,à RWIN ‘l,È,Ç,ì’È□Mfjpf%of□□[f^,đ,ç,è,ç,è•ì,ì,ÄŽŽ,μ,Ä,ç,é□l,í¹²,ç,Ä,μ,â,±□B

• ,Ä,à□Afpf%of□□[f^,ífÇfWfXfgfŠ,É<L~^,³,ê,Ä,ç,é,ì,Å□AŽè“®(regedit),Å‘l,đ•ì,ì,é□ê□±,É,ÍŠÔ^á,ç,ì-³,ç,æ,±,É’□^Ó□[,ç□ì<Æ,ª•K-v,È,ñ,Å,·,È□B□x,©,-²□® ,μ,½,ç□ê□±,í%½“x,à‘l,đ•ì,ì,é,±,Æ,É,È,é,ì,Å□AŠÈ’PŽèÇEy,ÉfÇfWfXfgfŠ,đ•ì□X□o—^,é,±,ífç□[f<,đ□ì,Á,Ä,Ý,Ü,μ,½□B fpf%of□□[f^,ì^Ó-i,ª,æ,•ª,©,ç,È,-,Ä,à□AŽ©•ª,ì’È□MŽí•È,đ‘l’đ,μ,Ä□,□Š‘l,đ□’,«ž,±,±,Æ,ª□o—^,Ü,·□B

- PING,ìŽÀ□s,É,æ,è□A□Å“K,È MTU‘l,đ‘T□ö,Ä,«,Ü,·□B
- Ç»□Ý,ífÇfWfXfgfŠ,ì□Ý‘è‘l,đŠm”F,Ä,«,Ü,·□B
- W□€“l,Èfpf%of□□[f^‘l,áfZfbfg,μ,Ä, ,é,ì,Å□AŠÈ’P□Ý‘è,Ä,«,Ü,·□B
- W□€‘l,đŽ©•ª,È,è,É²□® ,μ,ÁfÇfWfXfgfŠ,É□’,«ž,±,±,Æ,à□o—^,Ü,·□B
- fÇfWfXfgfŠ‘l,đ□A,±,ífç□[f<Žg—p‘O,ì□ó‘Ò,É-ß,·,±,Æ,à,Ä,«,Ü,·□B

• ,½,¾,μ□AMTU/RWIN‘l,È,Ç,ì²□®,ì‘í□ô,ì,P,Ä,Ä, ,Ä,Ä□A’È□MfXfs□[fh,É%œ<ç,·,é—v^ö,ì¹⁴,È,à,ç,è,ç,è, ,è,Ü,·□B,±,ífç□[f<,Áfpf%of□□[f^,đ•ì□X,μ,Ä,àÇø%È,ª,È,ç□ê□±,ì^È%œ,đŠm”F,μ,Ä%œª,³,ç□B

- fEfBf<fX‘í□ôf\ftfg,È,Ç,ì’È□M,đŠÄŽ<,μ,Ä,ç,é□í“f\ftfg,đŽŽ,μ,É-³Çø,É,μ,Ä,Ý,é□B
- “d~b%œñ□ü,đ—~—p,μ,½fKfXÇY□jŠí,ª^«%œ<ç,·,é□ê□±,ª, ,é□B
- “d~b□ü,ª’,ç,Æ¹⁴,ì<@Ší,ífmfCfY,đ□E,±,ì,Ä,È,é,x,’Z,·,é□B
- ADSLf,fff€,ÉfA□[fX,đ•t,¯,Ä,Ý,½,è□Afp-fuf<,ÉfmfCfYftfBf<f^,đ•t,¯,Ä,Ý,é□B
- “d~b□ü,É□U’±,³,ê,½¹⁴,ì<@Ší,đ^êŽžŠO,μ,ÄŽŽ,μ,Ä,Ý,é□B
- “d~b<Ç,Æ,ì<—£,ª’,©,Á,½,è□AISDN%œñ□ü,ª¹□Ý,³,é,Ä,ç,é,È,Ç^«□đÇ□,ª-³,ç,©□B
- ,æ,è<ß,çÇøš<ç,Ö,ìŽù—eŠ·,ì,đNTT,É^È—Š,μ,½,è□A•U^ÄŠíÇøš·(—L—ç),đ^È—Š,·,éžè,à□B
- NTT,É%œñ□ü²□®(—L—ç),đ^È—Š,μ□A“r’t,ífufŠfbfWf^fbfv(BT)ŠO,μ,ª—LÇø,¾,Ä,½—á,à□B

• ,±,ì **EditMTU** ,í Win98/Me/2000/XP,Ä“®□ì,μ,Ü,·□B

• EditMTU,ì•ì□X,μ,½fÇfWfXfgfŠ‘l,đÇ³,É-ß,·<@“\,à, ,è,Ü,·,ª□A”O,ì,½,ß^È%œ,ì,æ,±,ÉfÇfWfXfgfŠ,ífobfNfAfbfv,đ,μ,Ä,·,Æ,ç,ç,Ä,μ,â,±□B ,Ü,½□AfVfXfef€•œÇ³<@“\,ª, ,é,n,r,È,ç□A,»,è,ÁfÇfWfXfgfŠ•œÇ³,à,Ä,«,Ü,·□B

□yfÇfWfXfgfŠ,ífobfNfAfbfv•û-@□z

œRegedit,δ<N“®B([ fXf^[fg ]-[ ftj@fCf<-¼,δŽw'è,μ,ÄŽÄ[s]-uregeditv,Æ“ü—Í)  
œf[]fjf...[.ìufŒfWfXfgfŠv,©,ç[]A[]ufŒfWfXfgfŠftj@fCf<,ì',«[]o,μ[]v,δ'í'ð,·,é[]B  
[]œ[]',«[]o,μ"í^í,í[]A[]u,·,x,Ä[]v,δf`fFfbfN,μ[]Abackup01.reg ,È,Ç,ì-¼'Ö,Å•Û'¶,·,é[]B  
[]œ,Û,½,í[]A[]uHKEY\_LOCAL\_MACHINE[]v,δ'í'ð,μ,Ä[]A,»,±,¾,¯,ð•Û'¶,μ,Ä,à—Ç,ç[]B

[]yfŒfWfXfgfŠ,ð•œŒ³,·,é•û-@[]z

œRegedit,δ<N“®B  
œf[]fjf...  
[.ìufŒfWfXfgfŠv,©,ç[]ufŒfWfXfgfŠftj@fCf<,ì“Ç,Ý[]ž,Ý[]v,δ'l,ñ,Å[]A'Ö,É•Û'¶,μ,½  
backup01.reg ftj@fCf<,ð“Ç,Ý[]ž,ß,î,n,j[]B  
[]œ,Û,½,í[]A'Ö,É•Û'¶,μ,½ backup01.reg ftj@fCf<,ðf\_fuf<fNfŠfbfN,μ,Ä,à—Ç,ç[]B



- '€□i•û-@
- □uWin98/ME□vf^fu
- Win98/ME ,lfpf%of□□[f^□Y'è,ÆŠm" F,ª,Å,«,Ü,·□B



Registry 値取得 f{f^f",đfNfŠfbfN,·,é,Æ□ACE»□Y',lfCEfWfXfgfŠ,ì□Y'è'l,ªŠefpf%of□□[f^,ì %oE'ª,lfOfCE□□[F,ìBOX,É•\Žì,³,è,Ü,·□B□!l,ª"¶□Y',µ,È,ç□ê□#,í<ó",©□u-□v,đ•\Žì□B □□□@,É,□AVer2.0^È~·,Å,ìŽ©"®"l,ÉfCEfWfXfgfŠ'l,đŽæ"¾,·,é,æ,ª ,É•ì□X,µ,Ü,µ,½,ì,Å□A'A,É□u'lŽæ"¾□vf{f^f",đfNfŠfbfN,·,é•K—v,í, ,è,Ü,¹,ñ□B

f{f^f",đfNfŠfbfN,·,é,Æ□AfCEfWfXfgfŠ'l,đ"Ç,Ý□ž,ñ,Å□A,»,ì'l,đ□¶'ª ,ì□Y'èBOX,ì•û,ÉfRfs□[,µ,Ü,·□B fCEfWfXfgfŠ'l,đCEJ,è•Ô,µ□C□³,µ,Å□',«□ž,p□ê□#,É•Ö— ~,Å,µ,ã,ª□B □[fCEfWfXfgfŠ,É-ç□Y'è,ì'l,ª, ,é□ê□#,lfRfs□[□o—^,Ü,¹,ñ□B

- □u'Ê□M,ìŽí•Ê□vBOX%oE'[,ì[□¥],đfNfŠfbfN,µ,ÄŽ©•ª,ÉŠY" - ,·,é,à,ì,đ'l'đ,·,é,Æ□AŠefpf%of□□[f^,ì•W□€'l,ªfZfbfg,³,è,Ü,·,©,ç□ACEã,í

Registry 書込み f{f^f",đfNfŠfbfN,·,é,¾,~,ÅfCEfWfXfgfŠ,É"o~^,Å,«,Ü,·□B □□□@ (□!ŽY%oñ EditMTU,đ<N"®,µ,½Žž,í□A□l—¹Žž,É'l'đ,³,è,Ä,ç,½'É□MŽí•Ê,ª•\ Žì,³,è,Ü,·)

- •\Žì,³,è,Ä,ç,éfpf%of□□[f^'l,đŽ©•ª,È,è,É'²□®,µ,Ä,©,çfCEfWfXfgfŠ,É□',«□ž,p,± ,Æ,à□o—^,Ü,·□B (□!CEY,ç,É~A"®,·,é'l,É,Å,ç,Ä,í□uflfvfvf#""□vf^fu,đŽQ□Æ)

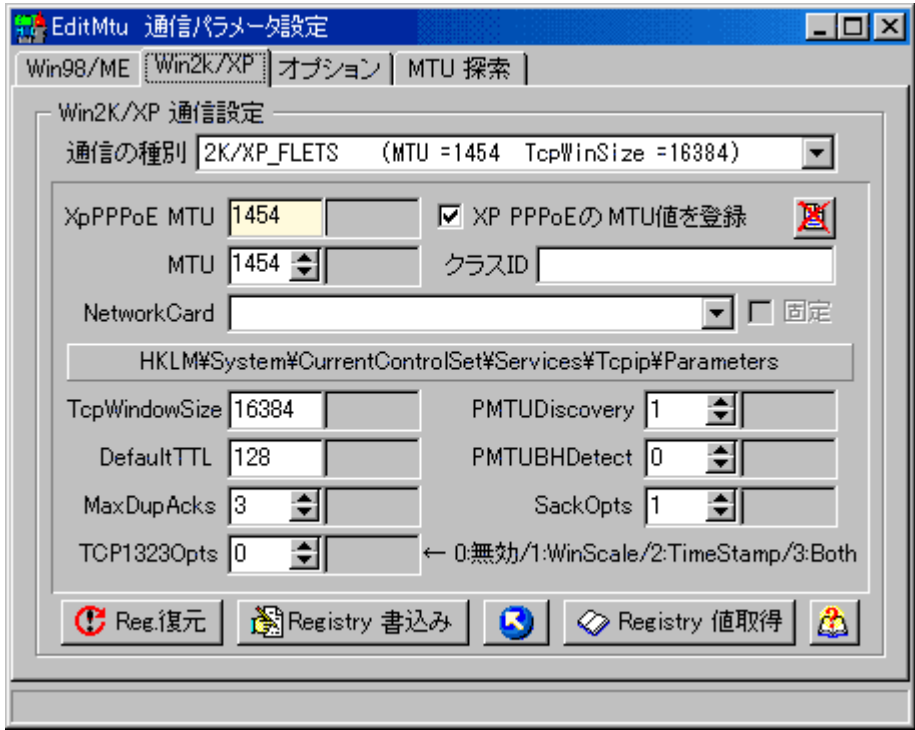
@@@,È, "A,±,ì·iX,μ,½fpf%of[f^'l(¶'α,ì"BOX,ì·\Žì),í  
EditMTU,ðÄ<N"®,μ,½,èu'ÊMŽí·Êv,ð·iX,μ,½,è,·,é,Æ CE³,ì,,¶S'l,É-ß,è,Ü,·B

• Win98/ME,ìê±,É,íAŠefpf%of[f^(MaxDupAcks^ÈŠO),ðu·¶Žš—  
ñv,Æ,μ,Ä',«ž,Ý,Ü,·B

Reg.復元 f{f^f“,ðfNfŠfbfN,·,é,ÆA,±,ìfc[f<,Å·iX,³,è,½fEfWfXfgfŠ'l,ðCE³,É-  
ß,μ,Ü,·B(¶,±,ìfc[f<,Å·iX,·,é'O,ìó'Ô,Ö,ì·œCE³,Å,·)

! fEfWfXfgfŠ·iX,ð—LCEø,É,·,é,É,íAWindows,ðÄ<N"®,·,é·K—v,<sup>a</sup>, ,è,Ü,·B

- '€ï•û-@
- □uWin2K/XP□vf^fu
- Win2K/XP ,lfpf%of□□lf^□Y'è,ÆŠm" F,a,Å,«,Ü,·□B



- f{f^f",đfNfŠfbfN,·,é,Æ□ACE»Y',lfCEfWfXfgfŠ,l□Y'è'l,ªŠefpf%of□□lf^,ì%oE'ª ,lfOfCE□□F,ìBOX,É•\Z!,³,è,Ü,·□B□!l,ª'¶□Y,µ,É,¢□é□#,í□u-□v,đ•\Z!□B □□@,É,□AVer2.0^É□~,Å,íZ©"®"l,ÉfCEfWfXfgfŠ'l,đZæ"¾,·,é,æ,ª ,É•í□X,µ,Ü,µ,½,ì,Å□A'A,É□u'lZæ"¾□vf{f^f",đfNfŠfbfN,·,é•K-v,í, ,è,Ü,¹,ñ□B
- f{f^f",đfNfŠfbfN,·,é,Æ□AfCEfWfXfgfŠ'l,đ"Ç,Ý□ž,ñ,Å□A,»,ì'l,đ□¶'ª ,ì□Y'èBOX,ì•ú,ÉfRfs□[,µ,Ü,·□B fCEfWfXfgfŠ'l,đCEJ,è•Ô,µ□C□³,µ,Å□',«□ž,p□é□#,É•Ö— ~,Å,µ,â,ª□B □lfCEfWfXfgfŠ,É-¢□Y'è,ì'l,ª, ,é□é□#,lfRfs□[□o—^,Ü,¹,ñ□B
- Registry'l,đ"Ç,Ý□ž,p,Æ□AMTU'l,đ□',«□ž,pfCEfWfXfgfŠKey(flfbfgf□□lfNf□□fh,lfNf %ofXID),đ□AfCEfWfXfgfŠ,©,çZ©"®Zæ"¾,µ,Ü,·□B
- □!•i□",ì NetworkCard ,ªCEY□o,³,è,½□é□#,í□AZg—p,µ,Ä,¢,é NetworkCard ,đ'l'đ,µ,Ä□u
- CEÅ'è□v,đf`fFfbfN,µ,Ä,,¾,³,¢□B
- □! CEÅ'è,µ,É,¢□é□#,í□ACEY□o,³,è,½'S,À) NetworkCard ,lfL□[,É MTU'l,đ□',«□ž,Ý,Ü,·□B
- □u'É□M,ìZí•É□vBOX%oE'[,ì[□¥],đfNfŠfbfN,µ,ÄZ©•ª,ÉŠY"—,·,é,à,ì,đ'l'đ,·,é,Æ□AŠefpf

%f [f^,] • W € 'l, afZfbfg, 3, è, Ü, , ©, ç ACEã, í

• f {f^f", ðfNfšfbfN, , é, ¾, -, ÅfCFWfXfgfš, É"o~^, Å, «, Ü, . □B  
□@□@ (□; ŽY%ñ EditMTU, ð<N" ®, μ, ½ Žž, í □A □I —<sup>1</sup> Žž, É' l' ð, 3, è, Ä, ç, ½' É □M Ží • Ê, a \  
Ž!, 3, è, Ü, .)

• • \Ž!, 3, è, Ä, ç, éfpf%of [f^' l, ðž © • a, È, è, É' 2 □ ®, μ, Ä, ©, çfCFWfXfgfš, É □', « □ž, p, ±, Æ, à □  
— ^, Ü, . □B (□; CEY, ç, É ~ A " ®, ., é' l, É, Ä, ç, Ä, í □uflfvfVf#f" □vf^fu, ðž Q □Æ)  
□@□@, È, " □A, ±, í • í □X, μ, ½ fpf%of [f^' l (□' 'x, í " BOX, í • \Ž!), í  
EditMTU, ð □Ä <N" ®, μ, ½, è □u' É □M Ží • Ê □v, ð • í □X, μ, ½, è, ., é, Æ CE<sup>3</sup>, í □, □š' l, É - β, è, Ü, . □B

☑ □uXP PPPoE , ì MTU' l, ð " o~^, , é □v , Éf` ffbfN, ð • t, , é, Æ □A WinXP , ì PPPoE □Ú ±  
, ì □è □# , ì MTU' l, ð □', « □ž, Y, Ü, . □B (XP, ì PPPoE ffftfHf<fgMTU' l, í 1480) □!, » , ì %oE, ì

✖ f {f^f", ðfNfšfbfN, , é, Æ □AMTU □Y' è' l, ð □í □œ, μ, Ä ffftfHf<fg, É - β, μ, Ü, . □B

• □; Win2K/XP, ì □è □# , í □A Šefpf%of [f^ , ð  
DWORD' l CE` Ž ®, ÅfCFWfXfgfš, É □', « □ž, Y, Ü, . □B

• f {f^f", ðfNfšfbfN, , é, Æ □A, ±, ì fc □[f<, Å • í □X, 3, è, ½ fCFWfXfgfš' l, ð CE<sup>3</sup>, É - β, μ, Ü, . □B (□; , ±  
, ì fc □[f<, Å • í □X, , é' O, ì □ó' O, Ö, í • œ CE<sup>3</sup>, Å, .)

• □; fCFWfXfgfš • í □X, ð — LCEø, É, ., é, É, í □A Windows, ð □Ä <N" ®, ., é • K — v, a , , è, Ü, . □B

### ◆ □y (Win2K/XP—p) ' l, ð □Y' è, , é fCFWfXfgfš fL □, Æ - ¼ ' O □z

[HKLM\SYSTEM\CurrentControlSet\Services\Tcpip\Parameters]

"TcpWindowSize"=DWORD:0000xxxx  
"GlobalMaxTcpWindowSize"=DWORD:0000xxxx  
"EnablePMTUDiscovery"=DWORD:00000001  
"EnablePMTUBHDetect"=DWORD:00000000  
"DefaultTTL"=DWORD:00000080  
"SackOpts"=DWORD:00000001  
"TcpMaxDupAcks"=DWORD:00000003  
"Tcp1323Opts"=DWORD:00000000

[HKLM\SYSTEM\CurrentControlSet\Services\Tcpip\Parameters\Interfaces\  
(AdapterID)]

"MTU"=DWORD:0000xxxx  
"TcpWindowSize"=DWORD:0000xxxx

[HKLM\CurrentControlSet\Services\Ndiswan\Parameters\Protocols\0]

"ProtocolType"=dword:00000800  
"PPPProtocolType"=dword:00000021  
"ProtocolMTU"=dword:000005ae

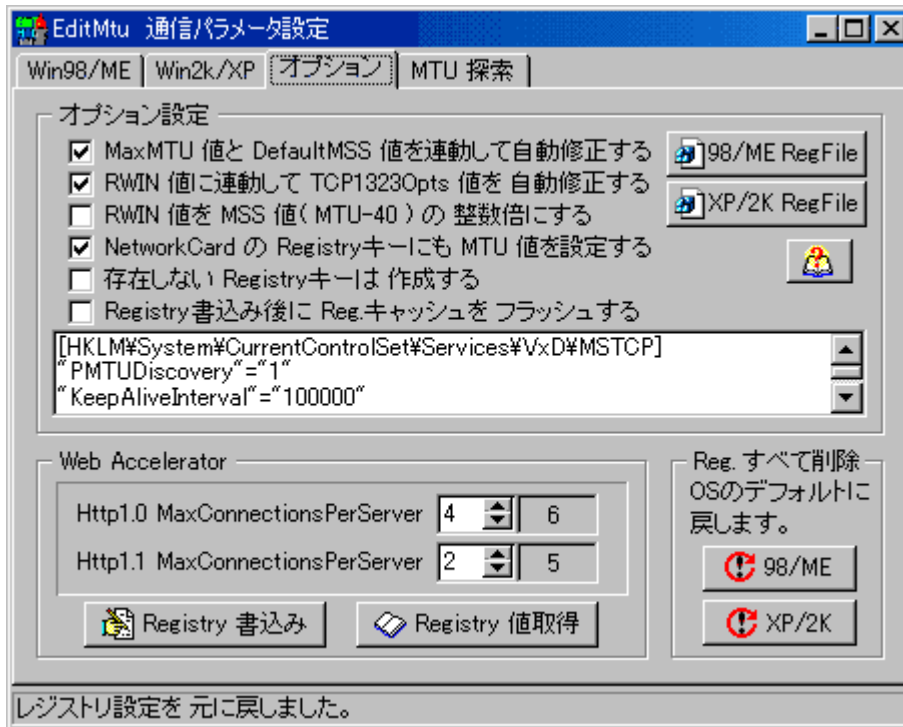
□; (AdapterID), í fCFWfXfgfš, © , ç Ž © " ® Žæ "¾ □B

□; HKLM, í HKEY\_LOCAL\_MACHINE , ì — a □B





- '€□î•û-@
- □uflfvfVfjf“□vf^fu
- ,ç,,Â,©,ìlfvfVfjf“,ðY'è,Â,«,Ü,·□B



◆ □uMaxMTU 'l,Æ DefaultMSS 'l,ð~A“®,μ,ÄŽ©“®□C□³,·,é□v

• f`fFfbfN,ª, ,ê,ì□AMaxMTU - 40 = DefaultMSS ,Æ,È,é,æ,α  
 ,É‘ŠÇEY,ì'l,ð~A“®,μ,Ä•ì□X,μ,Ü,·□B

◆ □uRWIN'ì,É~A“®,μ,Ä Tcp1323Opts ,ðŽ©“®□C□³,·,é□v

• f`fFfbfN,ª, ,ê,ì□ARWIN 'l,ª 65536 ^È□ã,ì□ê□# Tcp1323Opts ,ð 3 ,É□A65535 ^È  
 %o°,É,ç 0 ,É,μ,Ü,·□B

◆ □uRWIN'ì,ð MSS'ì(MTU-40),ì □®□””{,É,·,é□v

• f`fFfbfN,ª, ,ê,ì□ARWIN'ì,ð MSS'ì,ì□®□””{,É,μ,Ü,·□B  
 • f`fFfbfN,μ,½□ê□# ,ì□ARWIN'IBOX,ì%oE'α,É•\Žì,³,ê,éBOX,Â ”{□”,ðŽw'è,μ,Ü,·□B(±  
 ,ì□ê□#□ARWIN'IBOX,Ö,ì'¼□Ú“ü—í,í•s%oÅ)



• **uNetworkCard , à RegistryfL[ , É, à MTU 'l, ð'Y'è, , év**

f fFfbfN, a, , è, î ANetworkCard , ², Æ, à RegistryfL[ , É MTU ARWIN 'l, ð"o~^, µ, Ü, · B

•

• **u'¶Y, µ, È, ç RegistryfL[ , Í ñ - , , év**

f fFfbfN, a, , è, î A, ±, ìfc [f<, ÅfAfNfZfX, ·, é RegistryfL[ , a' ¶Y, µ, È, ç ê ±, Í  
, » , ìfL [ , ð ñ - , µ, Ü, · B

•

• **uRegistry' ¶ž, YCEã, É RegfLfffbfVf..., ð ftf%o'bfVf..., , év**

f fFfbfN, a, , è, î ARegistry' ¶ž, Y, ìCEã, ÉfLfffbfVf... f ¶f, fŠ, ©, çfCEfWfXfgfŠftf@fCf<, É<-  
¶Š"l, É•Ú'¶, µ, Ü, · B

f fFfbfN, ð Á, ·, Æ A, n, r, ì³ ¶í ¶l — Žž, © ¶Ä<N" ® Žž, É•Ú'¶, ³, è, Ü, · B

f fFfbfN, a, , Á, Ä, àfCEfWfXfgfŠ•ï X, ð — LCEø, É, ·, é, É, Í Windows, ì Ä<N" ®, a•K — v, Á, · B

• **uWeb Acceleratorv**

" ^ ê fTfCfç, ©, ç " Žž, É " Ç, Y ¶ž, P ¶", ð'Y'è, µ, Ü, · B ¶, ' ¶  
%oñ ü, Á, , è, Í ' á, «, ß, É ¶Y'è, µ, ½ • ú, a " Ç, Y ¶ž, Y Žž Š Ö, Ì ' Z ¶k, É, È, é %o Á " ¶ «, a, , è, Ü, ·, a ¶ A ' á, « %o  
ß, - , é, Æ fT [fo [ • %o %o x, Ì ' ¶ ' á, Á ' x, , É, é, ±, Æ, à ¶ B

• **uReg., , x, Ä í ¶ œv**

f {f ^ f", ð fNfŠfbfN, ·, é, Æ A TCP/IP Š Ö ~ A, ìfCEfWfXfgfŠ, ì ¶Y'è, ð ¶í ¶ œ, µ, Ä  
, n, rffftfHf<fg, ì ó ' Ô, É - ß, ·, ±, Æ, a ¶ o — ^, Ü, · B

¶; , ±, ìfc [f<, Á • ì X, ³, è, éfCEfWfXfgfŠ 'l, ð, ·, x, Ä í ¶ œ, µ, Ü, · B (^ è " , Ì ' l, Í ¶í ¶ œ, Á, È, -  
¶ A ffftfHf<fg 'l, É • œ < A)

¶; ¶ uWeb Accelerator ¶ v, É, Á, ç, Ä, Í A<N" ® Žž, ì 4 ¶ A 2, Ì ' l, ð ¶, « Žž, P, ±, Æ, Á ffftfHf<fg, É -  
ß, ¹, Ü, · B

fCEfWfXfgfŠ•ï X, ð — LCEø, É, ·, é, É, Í A Windows, ð Ä<N" ®, ·, é • K — v, a, , è, Ü, · B

•



f {f ^ f", ð fNfŠfbfN, ·, é, Æ A fCEfWfXfgfŠ ¶ EfXfNfŠfvfg (.reg) ftf@fCf<, ð ñ - , µ, Ü, · B

¶ E ¶ uDefault\_98ME\_BACK.reg ¶ v ¶ c OS, ì ffftfHf<fg, É - ß, · 98/ME — p regftf@fCf<  
¶ E ¶ u98ME\_BACK.reg ¶ v ¶ @ ¶ @ ¶ @ ¶ @ ¶ c f c ¶ [f< Žž — p ' O, É - ß, · 98/ME — p  
regftf@fCf<

¶ E ¶ uDefault\_XP2K\_BACK.reg ¶ v ¶ c OS, ì ffftfHf<fg, É - ß, · 2K/XP — p regftf@fCf<  
¶ E ¶ uXP2K\_BACK.reg ¶ v ¶ @ ¶ @ ¶ @ ¶ @ ¶ c f c ¶ [f< Žž — p ' O, É - ß, · 2K/XP — p

regftf@fCf<

[]; ^È[]ã,ìŽl,Â,Í Ver4"Å(AnsiString) ,ì regftf@fCf<,Å,·[]B

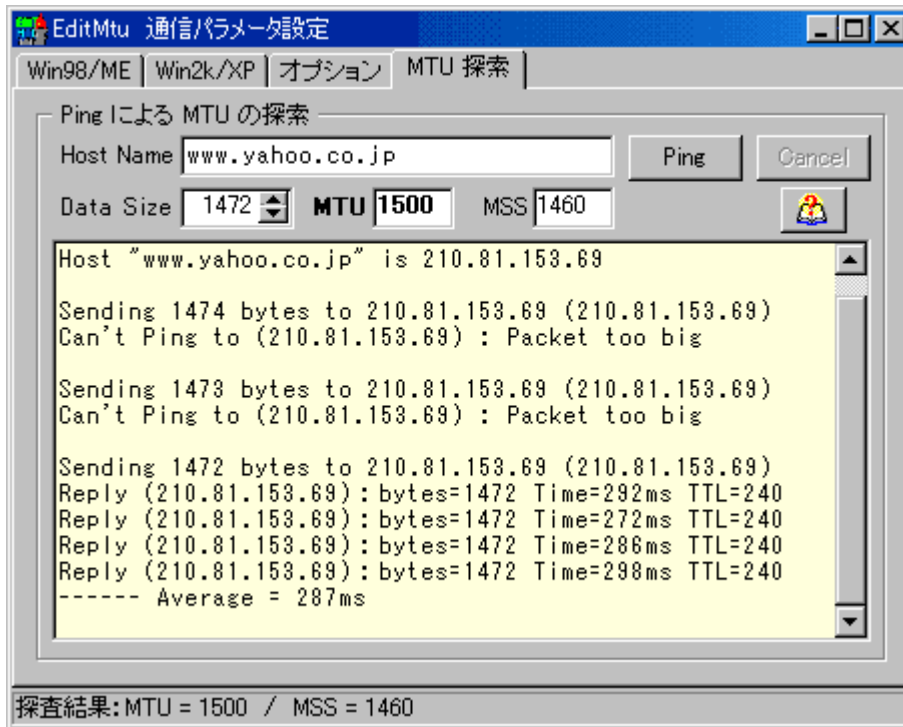
[]E[]uReg5\_Default\_XP2K\_BACK.reg[]v[]c OS,ìffftfHf<fg,É-β,· 2K/XP—p  
regftf@fCf<

[]E[]uReg5\_XP2K\_BACK.reg[]v[]@[]@[]@[]@[]@[]c fc[]f<Žg—p'O,É-β,· 2K/XP—p  
regftf@fCf<

[]; ^È[]ã,ì"ň,Â,Í Ver5.00"Å(Unicode) ,ì regftf@fCf<,Å,·[]B

[]; Win2K/XP,Í Ver4"Å,É,à'î%ž,μ,Ä,ç,Ü,·,ª[]A^ê%žVer5.00"Å,à[]ì[]¬,μ,Ü,·[]B

- 通信パラメータ設定
- MTU の検索
- PING による MTU の検索



- Host Name ボックスに IP アドレスを入力し、Ping ボタンをクリックする
- Data Size ボックスに 1472、MTU に 1500、MSS に 1460 と入力する
- Reply... ボックスに、%s (%s) の MTU を検索中、%s の MTU は %d、MSS は %d と入力する
- 検索結果は、MTU = 1500 / MSS = 1460 と表示される

• ÅĀě,É

• f\ftfg,İŽí•Ê

• ,±,İ EditMTU ,í ftfŠ[f\ftfg,Å,·B

• -ÆŎA”z•zđŒ

• ,±,İfAfvfŠ,đŽg—p,μ,½,±,Æ,É,æ,é,ç,©,È,éŒ<%Ê,É,Â,ç,Ä,à-ÆŎ,Æ,<sup>3</sup>,<sup>1</sup>,Ä,ç,  
½,<sup>3</sup>/<sub>4</sub>,«,Ü,·B

• ”z•z,È,Ç,İŽ©—R,Å,·,ªAŎo—^,ê,İŽ-’O,É,<sup>2</sup>~A—, ,<sup>3</sup>/<sub>4</sub>,<sup>3</sup>,çB

• ,±,İfAfvfŠ,İ~iŒ ,í,g,d,m,É, ,è,Ü,·B

• ~A—æ

• ,à,μfofO,È,Ç,<sup>a</sup>, ,è,Ü,μ,½,ç^È%º,É,<sup>2</sup>~A—, ,<sup>3</sup>/<sub>4</sub>,<sup>3</sup>,çB %Å”\,ÈŒÀ,èíŎ^,μ,Ü,·B

• fŎ[f<,İ^Ŏæ [scap\\_hen@geocities.co.jp](mailto:scap_hen@geocities.co.jp) ,g,d,m

