

Quick Guide To Using Help

The EPSON PM Series Help window works just like the Help windows you find in other applications. If you are not familiar with how Help operates, here are a few tips to get you started.

Using the Help Buttons

There are buttons near the top of the Help window, as described below. You can "press" a button by placing the pointer on the button and clicking it with your mouse.

Contents	Returns you to the main Help contents dialog box
Search	Searches for information about a particular topic
Back	Returns you to the previous screen
>>	Proceeds to the next topic in the browse sequence
<<	Returns you to the previous topic in the browse sequence

Terms and Functions

Hypertexts are links to more information about on-screen terms, icons, and functions. In some cases, they also provide you with links to other related topics.



Important! When you move the pointer over hypertext, the pointer changes from an arrow to a pointing finger. This means you can click the text to get more information.

Hypertext

Your screen displays hypertext in green.

If you click hypertext with a dotted underline, Help displays a pop-up box that contains more information about that term. To close the pop-up box, click anywhere on the screen or press any key on the keyboard.

If you click hypertext with a solid underline, Help jumps directly to that topic.

Three Kinds of Help

When using the printer driver menus, click the Help button at the bottom of the menu to view the Help window. In addition, there are two other ways to quickly learn more about a setting or option: Help Tips and What's This?.

Help Tips

Help Tips provide a short explanation of a setting or option. To view Help Tips, move the pointer over a setting or option and leave it there for a few seconds.

What's This?

You can display a more detailed explanation of a setting or option by right-clicking the item, and then clicking the What's This? box that appears. The screen displays Help related only to the topic you selected.

Copyright and Trademark Information

EPSON

The EPSON PM Series Printer Driver for Microsoft ® Windows ® 95, Windows ® 98, Windows ® 2000 and NT ® Operating Systems

Portions Copyright © SEIKO EPSON Corporation. 2000.

All rights reserved.

All other product names used herein are for identification purposes only and may be trademarks of their respective owners. EPSON disclaims any rights in those marks.

Layout menu

The Layout menu allows you to select a variety of special printing features. Click a setting name in the example below for more information. (Some of the settings are not available for all EPSON printers and operating systems.) Settings on this menu allow you to reduce or enlarge your printout, print two or four pages on single sheet, print poster-size images by enlarging one page to cover several sheets, or add a Stampmark.

Zoom Option

Multi-Page

N-up

Page Order

Print page frames

Poster

Settings

Stampmark

Add/Del

Settings

Zoom Option

These settings allow you to enlarge or reduce the size of a document while maintaining its aspect ratio. The Fit to Page setting enlarges or reduces the size of a document to make it fit the printable area you select on the Paper menu. The Custom setting allows you to enlarge or reduce an image by a percentage you choose.

Multi-Page

N-up

Allows you to print two or four pages on single sheet of paper. When you select N-up, the Pages radio buttons and the Page Order button are activated. Select either 2 Pages or 4 Pages and click the Page Order button to open the [Print Layout dialog box](#), where you can specify the order in which the pages will print.

Poster

Allows you to print poster-size images by enlarging one page to cover several sheets of paper. When you select Poster, the Pages radio buttons and the Settings button are activated. Use the Pages radio buttons to select the number of printed pages you want the poster to cover. Click the Settings button to open the [Poster Settings dialog box](#), where you can specify which panels you want to print and make other settings.

N-up

Allows you to print two or four pages on single sheet of paper. When you select N-up, the Pages radio buttons and the Page Order button are activated. Select either 2 Pages or 4 Pages and click the Page Order button to open the Print Layout dialog box, where you can specify the order in which the pages will print.

Print page frames

Select Print page frames to print a frame around each page.

Page Order button

Click the Page Order button to open the Print Layout dialog box, where you can specify the order in which pages will be printed.

Print Layout dialog box

The Print Layout dialog box allows you to specify the page order when printing two or four pages on a single sheet of paper.

Click a page order to select it, then click OK. The Print Layout display changes according to the order you selected.

Page Order

Click a page order to select it, then click OK. The Print Layout display changes according to the order you selected.

Poster

Allows you to print poster-size images by enlarging one page to cover several sheets of paper. When you select Poster, the Pages radio buttons and the Settings button are activated. Use the Pages radio buttons to select the number of printed pages you want the poster to cover. Click the Settings button to open the Poster Settings dialog box, where you can specify which panels you want to print and make other settings.

Settings button

Click the Settings button to open the [Poster Setting dialog box](#), where you can specify which panels you want to print and make other settings.

Poster Settings dialog box

The Poster Settings dialog box allows you to adjust the way your poster will print, and to specify which panels you want to print.

[Panel selection](#)

[Overlapping Panels](#)

[Print cutting guidelines](#)

Panel selection

You can specify which panels you want to print by clicking the panels you don't need in the Poster Settings dialog box. This feature allows you to print only the panels you need without having to print the entire poster.

Overlapping Panels

When you select the Overlapping Panels check box, the images on each panel are overlapped slightly so that you can align the edges precisely.

Print cutting guidelines

Select the Print cutting guidelines check box to print border lines on each panel to guide you when trimming the panels.

Stampmark

Allows you to select from a list of stampmarks. After you select a stampmark, click the Settings button to open the Stampmark Settings dialog box, where you can make detailed stampmark settings. Click the Add/Del button to open the User Defined Stampmark dialog box, where you can add or delete stampmarks.

Stampmark Settings dialog box

The Stampmark Settings dialog box allows you to select from a list of stampmarks, customize stampmark text, or select any bitmap (BMP) file to be used as a stampmark. You can also change the position, size, color, and density of a stampmark.

[To view stampmark settings for bitmaps, click here.](#)

[To view stampmark settings for text, click here](#)

<u>Position</u>	<u>Stampmark</u>
<u>Intensity</u>	<u>Color</u>
<u>Size</u>	

Stampmark Settings dialog box

The Stampmark Settings dialog box allows you to select from a list of stampmarks, customize stampmark text, or select any bitmap (BMP) file to be used as a stampmark. You can also change the position, size, color, and density of a stampmark.

[To view stampmark settings for standard stampmarks, click here.](#)

[To view stampmark settings for text, click here](#)

<u>Position</u>	<u>Stampmark</u>
<u>Intensity</u>	<u>File</u>
<u>Size</u>	

Stampmark Settings dialog box

The Stampmark Settings dialog box allows you to select from a list of stampmarks, customize stampmark text, or select any bitmap (BMP) file to be used as a stampmark. You can also change the position, size, color, and density of a stampmark.

[To view stampmark settings for standard stampmarks, click here.](#)

[To view stampmark settings for bitmaps, click here.](#)

<u>Position</u>	<u>Stampmark</u>
<u>Intensity</u>	<u>Text</u>
<u>Size</u>	<u>Color</u>
	<u>Font Setting</u>
	<u>Font</u>
	<u>Style</u>
	<u>Rotation</u>

Add/Del button

Click the Add/Del button to open the User Defined Stampmarks dialog box where you can save a new stampmark or delete unwanted stampmarks.

To save a new stampmark:

1. Click the Add/Del button. The User Defined Stampmarks dialog box appears.
2. Select Text or BMP and type a name for the new stampmark in the Stampmark box.
3. If you select Text, type the stampmark text in the Text box. If you select BMP, click the Browse button, select the BMP file you want to use, then click OK.
4. Click the Save button to close the User Defined Stampmarks dialog box. Your stampmark will appear in the Stampmark list box.

Stampmark Settings button

Click the Settings button to open the [Stampmark Settings dialog box](#), where you can select a variety of stampmark options.

Stampmark Name

Use this list to select standard or custom stampmarks.

File

Allows you to select the bitmap (BMP) file you want to use as a stampmark. Click the Browse button and select the file.

Position

Allows you to specify where you want to print the stampmark on the page.

Intensity

Allows you to adjust the intensity of the stampmark's color.

Size

Allows you to enlarge or reduce the size of the stampmark.

Text

Type the stampmark text into this text box.

Color

Allows you to select the color of standard or custom stampmarks.

Color

Allows you to select the color of stampmark text.

Font

Allows you to select the font for stampmark text.

Style

Allows you to select the font style for stampmark text.

Rotation

You can adjust the angle of stampmark text by typing a specific angle, adjusting the Degree slide bar, or rotating the image with the mouse.

Stampmark display

Shows how the current stampmark settings will appear on the printed page.

Main menu

The Main menu gives you access to the main printer driver options. Click a setting name in the list below for more information. (Some settings are not available for all EPSON printers and operating systems.)

Media Type

Ink

Mode

Automatic

Quality-Speed

Auto Photo Fine!4

Settings list

Digital Camera Correction

Custom

Custom Settings list

Advanced button

Ink Levels

Print Preview

OK

Click OK to exit a dialog box or the printer driver and save your settings.

Cancel

Click Cancel to exit a dialog box or the printer driver without saving your settings.

Help

Click Help to display information.

About

Click About to display copyright and version information about the printer driver.

Apply

Click the Apply button to put your new settings into effect before you exit the printer driver or return to your application.

Ink

Specifies Color or Black ink printing. When you select Black, colors are automatically converted to grayscale values.

If your document includes color, choose Color. If you are printing black text only, a draft, or you want colors to print as varying shades of gray, choose Black.

Automatic mode

When Automatic is selected on the Main menu, the printer driver software determines the best print settings based on the Media Type and color settings you make. Be sure to choose the media you have loaded and specify either Color or Black ink.

When you move the slide bar to select either Quality or Speed, the printer driver automatically adjusts the resolution, MicroWeave, and High Speed settings. Select either Quality or Speed and the driver will make the appropriate settings for you.

Quality vs. Speed slide bar

Depending on your Media Type setting, the Quality vs. Speed slide bar appears on the Main menu when you select Automatic mode.

Auto Photo Fine!4 mode

Auto Photo Fine!4 mode lets you select from a list of image-correction settings specially designed for scanned or digitally-captured photos.

Auto Photo Fine!4 settings list

You can select the following settings from the Auto Photo Fine!4 list.

Standard Standard image correction suitable for most photos. Try this setting first.

People Enhances skin tones. Best for photos of people.

Nature Best for outdoor scenery such as mountains, skies, and oceans.

Soft Focus Makes your photos look as if they were taken with a soft-focus lens.

Sepia Applies a sepia tone to your photos.

Digital Camera Correction check box

If you are printing photos taken with a digital camera, select this check box to give your printed photos the smooth, natural appearance of photographs taken with a film camera.

Custom mode

If you prefer to have more control over printer driver settings, select the Custom mode. In Custom mode you can choose from a list of ready-made settings optimized for various types of print data and color matching methods. Or, click the Advanced button to view the [Advanced dialog box](#), where you can make detailed printer driver settings.

You can save your detailed settings as a group by clicking the Save Settings button.

Custom settings list

The Custom settings list includes the following settings as well as any custom settings you save. (Some settings are not available for all EPSON printers and operating systems.)

Text/Graph

Best for graphics-intensive documents, such as charts and graphics for presentations. It intensifies the colors but lightens the midtones and highlights of an image.

Economy

Provides faster printing and saves ink. The printer uses less ink by printing fewer dots per character. Choose this setting for rough drafts only.

ICM

Provides color matching schemes that give you more precise reproduction of the colors on your screen.

sRGB

This setting is useful for color matching with other sRGB devices.

Note: *You may need to experiment with different settings until you get the output you want. Also, selecting ICM automatically sets the Ink setting to Color. For details on making and saving custom settings, see Saving your custom settings.*

Advanced button

Click the Advanced button to view the [Advanced dialog box](#), where you can make detailed printer driver setting.

Save Settings

Clicking the Save Settings button opens the Custom Settings dialog box, where you can save your custom settings as a group. You can select this group of settings from the Custom settings list on the Main menu. You can save up to 10 custom settings.

To save your settings, see [Save your custom settings](#).

Custom Settings dialog box

You can save your custom settings as a group in the Custom Settings dialog box. Then you can select this group of settings from the Custom settings list on the Main menu. You can save up to 10 custom settings.

To save your settings, follow these steps:

1. From the Main menu, click Custom.
2. Click Advanced to open the Advanced dialog box. Make your settings, then click Save Settings. The Custom Settings dialog box appears.
3. Enter a name for your custom settings in the Name text box. (You can use up to 16 characters). Click Save.

The name you chose for your settings appears in the Custom settings list box. To delete a setting, select the setting in the Custom Settings dialog box and click Delete.

Media Type

Always match the Media Type setting with the kind of paper or other media you loaded in the printer.

Note: *The availability of special media varies by country.*

Current settings display

This area of the Main menu displays the currently-selected settings.

Ink Levels

The amount of Black and Color Ink remaining is displayed here.

Print Preview

To see a preview of your document before printing it, select this checkbox. When you select the Print option in your application, a Preview Window appears showing how your printed document will look.

Settings display

The image on the left side of the menu changes to reflect the settings you make.

Advanced button

Click the Advanced button to open the [Advanced dialog box](#), where you can make detailed printer driver settings.

Advanced dialog box

The Advanced dialog box lets you make the most detailed settings available in your printer driver. To access this dialog box, click Custom on the Main Menu then click the Advanced button. Click a setting name in the list below for more information. (Some settings are not available for all EPSON printers and operating systems.)

Media Type

Ink

Print Quality

Microweave

High Speed

Flip Horizontal

Finest Detail

Save Settings

Color

Color Controls

Color Controls Settings

Auto Photo Fine!4

Auto Photo Fine!4
Settings

No Color Adjustment

sRGB

ICM

Print Quality

The availability of Print Quality setting depends on the Media Type setting you select. Select the Media Type before you set the Print Quality.

Media Type (Advanced dialog box)

Always match the Media Type setting with the kind of paper or other media you have loaded in the printer. If the name of your EPSON paper is not in the Media Type list, see the instructions in the media package.

Note: *The availability of special media varies by country.*

Ink (Advanced dialog box)

Specifies Color or Black ink printing. When you select Black, colors are automatically converted to grayscale values.

If your document includes color, choose Color. If you are printing black text only, a draft, or you want colors to print as varying shades of gray, choose Black.

MicroWeave

MicroWeave allows your printer to generate superior output because graphics data is reordered and printed in finer increments. This technology reduces the possibility of banding, the light horizontal lines that can mar an image.

For best results, always select MicroWeave for color printing. Although you can also select MicroWeave when printing with black ink, printing time increases significantly.

High Speed

This setting activates bidirectional printing so your printer prints both left-to-right and right-to-left. High Speed mode speeds up printing, but decreases print quality.

Note: If misaligned vertical lines appear when printing in High Speed mode, you may need to align the print heads.

Flip Horizontal

This setting prints an image as it would appear in a mirror; text and graphics appear backwards.

If your application program does not automatically flip images for iron-on transfers, use this feature (the availability of this feature varies by country).

Finest Detail

Depending on the Print Quality setting you select, you can turn on Finest Detail to print text, solid graphics, and line art with very sharp edges. It may take considerably longer to print using this mode and it will increase your memory requirements. Additionally, you may not be able to print some larger images, and some patterns may not print correctly. If you experience problems printing in this mode, turn it off or add more memory.

Color Controls

Select this setting to use the color matching and image-enhancement methods provided by the printer driver. When you check this box, additional settings appear under the Color Management options where you can select a Mode setting and adjust the Color Enhancement slide bars.

Gamma

This option controls image contrast by modifying the midtones and midlevel grays.

- 1.5 Select this to print with the same contrast values as earlier EPSON ink jet printers.
- 1.8 Select this to print with higher contrast. Normally, select this value.
- 2.2 Select this when matching image colors with other sRGB devices.

Color Controls settings

Mode

Click in the Mode box to select one of these modes:

Automatic

Provides output that closely matches the original data.

Photo-realistic

Increases the contrast in an image. Use this setting for color photographs.

Vivid

Intensifies the colors and lightens the midtones and highlights of an image. Use this setting for presentation graphics, such as charts and graphs.

Slide bars

The Color Enhancement slide bars adjust the following options in a range of -25% to +25%. Drag the slide bar to the right or left with your mouse to adjust the settings. You can also type a value from -25 to +25 in the boxes next to the slide bars.

Brightness

Changes the overall lightness or darkness.

Contrast

Magnifies or minimizes the difference between the bright and dark parts of your image.

Saturation

Modifies the vividness of color. The lower the saturation, the duller the colors. The higher the saturation, the more vivid the colors.

Cyan, Magenta, and Yellow

Adjusts the amount of each of the three primary colors.

Note: When Color is selected as the Ink setting, all settings in the Color box are available. When Black is selected, only the Contrast and Brightness settings are available.

Auto Photo Fine!4

This setting is best for printing images captured using a video camera, digital camera, or scanner. The EPSON Auto Photo Fine!4 feature produces sharper images and more vivid colors by automatically adjusting the contrast, saturation, and brightness of the original image data.

When you check this box, additional settings such as Tone, Effect, and Digital Camera Correction appear under the Color Management options.

Note: *Selecting Auto Photo Fine!4 automatically sets the Ink option to Color. Changing the Ink setting after Auto Photo Fine!4 is selected returns the settings list to Custom Settings.*

Printing with Auto Photo Fine!4 selected may take longer depending on your computer system and the amount of data contained in your image.

Auto Photo Fine!4 settings

Tone:

You can select the following tone settings.

Normal

Applies EPSON standard tone adjustment to your document.

Hard

Prints in high contrast, which sharpens the printed image.

Vivid

Intensifies the colors and lightens the midtones and highlights of an image. Use this setting for presentation graphics, such as charts and graphs.

Sepia

Adjusts brightness and contrast and applies a sepia tone to the printed image.

Monochrome

Prints the image in black and white only.

None

Makes no tone adjustment to your document.

Effects:

Lets you apply image-correction and special effects to your photos without using image-editing software. Use the slide bar to adjust the intensity of the effect.

Sharpness

Sharpens the overall image, particularly the outlines.

Soft Focus

Makes your photo look as if it was taken with a soft-focus lens.

Canvas

Makes the image look like a picture painted on canvas.

Parchment

Makes the image look as if it is printed on parchment.

None

Applies no effect to your document.

Digital Camera Correction:

If you are printing photos taken with a digital camera, select this check box to give your printed photos the smooth, natural appearance of photographs taken with a film camera.

Note: *Selecting Auto Photo Fine!4 automatically sets the Ink option to Color. Changing the Ink setting after Auto Photo Fine!4 is selected returns the settings list to Custom Settings.*

Printing with Auto Photo Fine!4 selected may take longer, depending on your computer system and the amount of data contained in your image.

ICM

Select ICM when printing scanned photographs or computer graphics. This setting uses the Windows color matching method to automatically match the colors in your printout with the colors displayed on your screen. Be aware that the ambient light and the age, quality, and settings of the monitor can affect the quality of your color matching.

Note: *ICM is not available for Windows NT4.0 driver.*

sRGB

This setting is useful for color matching with other sRGB devices.

No Color Adjustment

This setting is generally not recommended, because it does not allow the printer driver to enhance or adjust the color in any way. Only use this setting when you create a new color profile or if the other Mode settings do not produce satisfactory results.

Paper menu

The Paper menu allows you to make a variety of settings related to paper. Click a setting name in the list below for more information. (Some settings are not available for all EPSON printers and operating systems.)

Paper Size

Paper Source

Copies

Orientation

Printable Area

Roll Paper Option

Paper Size

You can use any of the predefined paper sizes, or define a custom paper size as described below.

Defining a custom paper size

To define a custom paper size, follow the steps below.

1. From the Paper menu, click anywhere in the Paper Size list box.
2. Use the arrows on the right to scroll through the list until you see User Defined. Click User Defined.
3. Enter the paper width, height, and paper size name in the User Defined Paper Size dialog box.
Note: *The unit of measurement is set by your operating system. See your system documentation for Instructions on changing the unit of measurement.*
4. Click Save, and then click OK to return to the Paper menu. Your new user-defined paper size name appears in the Paper size list box.
5. Make any other changes to the Paper menu, then click OK to accept the changes.

Paper Source

Select a paper source from this list. Leave this set to Auto Sheet Feeder unless you are printing on roll paper.

Copies

These settings let you specify the number of copies and the printing order.

Copies

To specify the number of copies, click in the Copies box and type the number you want, or click the arrows next to the Copies box. You can enter any number from **1** to **9999**.

Collation

The two additional options in the Copies box are **Collate** and **Reverse Order**. Click these options to turn them on. A check inside the box indicates the option is turned on.

To print multiple-page documents in sets:

Click the **Collate** check box.

To print one multiple-page document so that its pages are in the right order after printing:

Click the **Reverse Order** check box.

To print one or more document sets so that each is stacked in the correct order after printing:

Click both the **Collate** and **Reverse Order** check boxes.

Note: *The above options may require additional system memory. If a memory error message appears and you are unable to print your document, you should increase system memory, decrease the number of open applications, reduce the size of your document, or turn off collation and/or reverse page ordering.*

Orientation

To change the orientation of your page, click one of the following buttons on the Paper menu. The image on the left changes to show the orientation.

Portrait -- Print direction is short edge first, like most magazines.

Landscape -- Print direction is long edge first, like many spreadsheets.

Rotate by 180° -- Prints your documents upside down.

Note: *Normally, you should select the paper orientation in your software application, not with the driver.*

Printable Area

This option is available when you select Auto Sheet Feeder as the Paper Source. Sets the printable area to Standard, Maximum or Centered. Centered means that your document is printed at an equal distance from all edges of the paper, directly in the center. Standard means using the standard printable area of the paper, Maximum means using the largest possible printable area of the paper.

Note: *If you select Maximum, print quality may decline in the expand areas.*

Paper orientation display

The image on the left side of the Paper menu changes to reflect the Orientation and Printable Area settings you make.

Roll Paper Option

This option is available when you select Roll Paper or Roll Paper (Trim) as the Paper Source. You can make the following settings in this option.

- Banner Mode--** Select this to print banners or long documents on a continuous sheet. Selecting this option enables the Save roll paper check box.
- Cut Sheet Mode--** Select this to print documents that are divided into pages. Selecting this option enables the Print page frame check box.
- Save roll paper--** Select this to prevent extra white space from being fed at the end of the document.
- Print page frame--** Select this to print a line at the end of each page to indicate where it should be cut.

Utility menu

The Utility menu gives you access to the printer utilities. Click a setting name in the list below for more information. (Some settings are not available for all EPSON printers and operating systems.)

EPSON Printer Window!3 utility

Nozzle Check utility

Head Cleaning utility

Print Head Alignment utility

Printer and Option Information

Other Config button

Head Cleaning utility

This utility cleans the color and black print heads. If the print head nozzles become clogged, print quality will decline and you may notice faint areas or areas where dots are missing. This utility will clear the nozzles, allowing them to deliver ink properly. Use the Nozzle Check utility before and after cleaning the heads to see if the nozzles are clogged and need to be cleaned. If the Nozzle Check utility indicates that the heads are not clean after using the Head Cleaning utility, clean the print heads again.

Note: *To avoid wasting ink, clean the print heads only if print quality declines.*

Caution: *Never turn off the printer while the print heads are being cleaned.*

Using the Head Cleaning utility

- 1 Make sure that the ink out lights are not flashing or on.
- 2 Open the printer driver properties window.
- 3 Click the Utility tab. You see the Utility menu.
- 4 Click the Head Cleaning button.
- 5 Follow the instructions on your screen to complete the cleaning procedure.

Nozzle Check utility

This utility checks the print head nozzles to see if they are clogged and need to be cleaned. If the Nozzle Check utility indicates that the nozzles need to be cleaned, start the Head Cleaning utility to clean the print head nozzles.

Note: *Before using this utility, make sure several sheets of paper are loaded in the printer.*

Print Head Alignment utility

This utility aligns the print heads so images will print clearly. Use this if your printed image is fuzzy, or if vertical or horizontal lines in your printout are not properly aligned.

This utility includes both black and color print head alignment features.

- 1 Make sure the printer is on and paper is loaded in the sheet feeder.

Caution: Use paper at least 210 mm (8.27 inches) wide, for example, A4 or letter-size paper loaded short edge first. Otherwise, the print heads will spray ink directly onto the platen.

- 2 Open the printer driver properties window.
- 3 Click the Utility tab. You see the Utility menu.
- 4 Click the Print Head Alignment button.
- 5 Follow the instructions on your screen to align the print heads.

EPSON Printer Window !3 utility

The Printer Window utility regularly monitors the printer. Click the EPSON Printer Window !3 button to open the Printer Status window for your printer. To open online help for the Printer Window, click the Help button in the Printer Status window.

Printer and Option Information dialog box

The Printer and Option information button opens the Printer and Option Information dialog box, where you can view and make some printer and optional device settings. The settings are not available for some operating systems and printers.

Other Config button

Click the Other Config button to open the Other Config dialog box, where you can make a variety of settings related to printing speed.

Other Config dialog box

The Other Config dialog box allows you to turn on the Progress Meter and enable faster printing. Click the items below for more information.

[High Speed Copies](#)

[Show Progress Meter](#)

[EPSON Printer Port](#)

[Always spool RAW datatype](#)

[Monitoring Preferences Button](#)

[High Speed Copy Folder](#)

[OK](#)

[Cancel](#)

[Help](#)

High Speed Copies

Click this box to turn on high-speed printing for multiple copies.

High Speed (DMA) Transfer Enabled

This message will appear if your computer system supports direct memory access (DMA). If a message appears instructing you to use DMA transfer for faster printing, you should select Direct memory access in the Device Manager Properties dialog box. See your computer documentation for more details on using the Device Manager.

Show Progress Meter

Click this box to make the Progress Meter appear every time you print.

EPSON Printer Port

Click this box to enable the EPSON Printer Port driver, which speeds up the data transfer rate for your print jobs.

Note: *EPSON Printer Port is available for only Windows 95 and 98 drivers.*

High Speed Copy Folder

When you turn High Speed Copies on, use this list to select a folder for storing temporary print files.

Always spool RAW datatype

Select this checkbox to have Windows spool documents using the RAW format instead of the EMF (metafile) format (Windows NT4.0 and Windows 2000 applications use the EMF format by default).

Try using this option if documents spooled in EMF format do not print correctly.

Spooling RAW data requires less resources than EMF, so some of problems ('Insufficient Memory/Disk Space to Print', 'Slow print speed', etc.) can be solved by selecting the "Always spool RAW datatype" checkbox.

When spooling RAW data, print progress as displayed by the Progress Meter may differ from actual print progress.

Note: *This function is available for only Windows NT4.0 and Windows 2000 drivers.*

Monitor Setting Button

Click this button to open the Monitoring Preferences Dialog box where you can make settings for EPSON Printer Window !3.

Spool Manager

When you click the Print or OK button in your application's Print dialog box, the EPSON PM Series printer driver sends your print job to the EPSON Spool Manager, which then sends your print job to the printer. If the Spool Manager receives multiple print jobs, it puts them in a queue and sends them to the printer in the order they were received.

The EPSON Spool Manager starts automatically when you select Print from your application. The Spool Manager icon appears on the taskbar. Click it to open the Spool Manager window. You can view print information such as document name and paper size in the Spool Manager window.

Cancel

Pause/Resume

Restart

When the Spool Manager receives a print job, the **Progress Meter** automatically starts. You can view print information such as printer status and the amount of ink remaining in the Progress Meter window. You can also cancel, pause, resume, and restart a print job in the Progress Meter window.

Note: *The Progress Meter will display the amount of ink remaining and certain printer status information only if the **EPSON Status Monitor 3 utility** is installed and running.*

Cancel

Cancels the print job. From the print queue, select the print job you want to cancel and click the Cancel button.

Pause/Resume

Pauses the print job. From the print queue, select the print job you want to pause and then click the Pause/Resume button. Click the Pause/Resume button again to continue printing from the current page.

Restart

Restarts the print job from the beginning. From the print queue, select the print job you want to restart and then click the Restart button.

Epson Printing Tips

Epson Printing Tips for better printing appear at the bottom of the Progress Meter, which is displayed whenever you send a print job to the printer. These tip cover the following topics.

[Making the right Media Type setting](#)

[Did you know that special media has a printable side?](#)

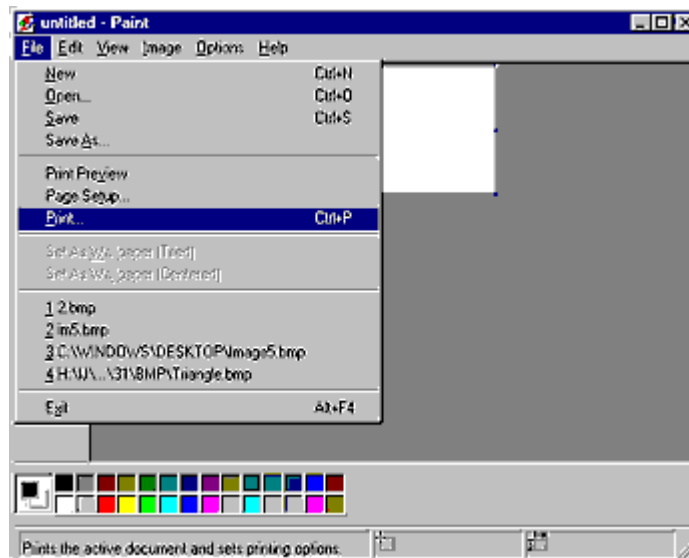
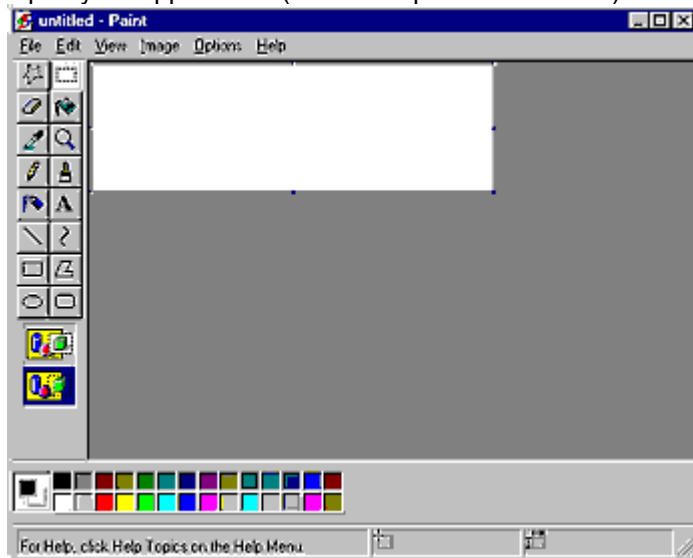
[Clearing the horizontal banding in your printouts](#)

[Obtaining a new ink cartridge](#)

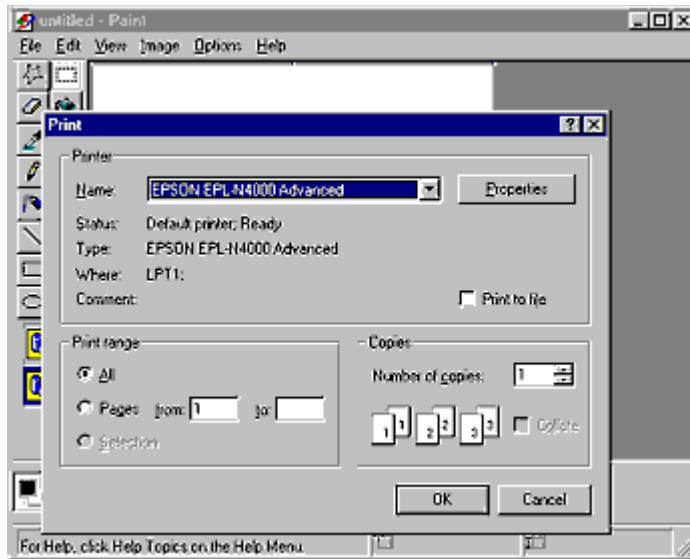
Making the right Media Type setting

For best results, make sure the Media Type selected in the printer driver is right for the type of media loaded in the printer. Follow these steps to check the Media Type setting from your application.

- (1) Open your application. (This example is from Paint.)

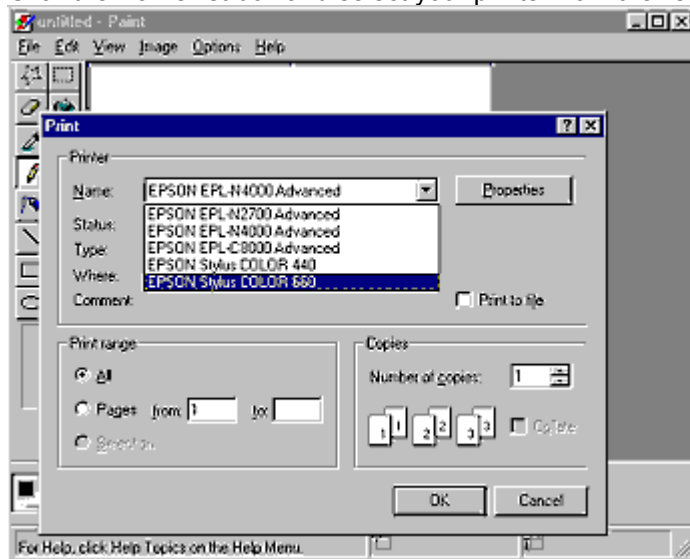


- (2) Select Print from the File menu.

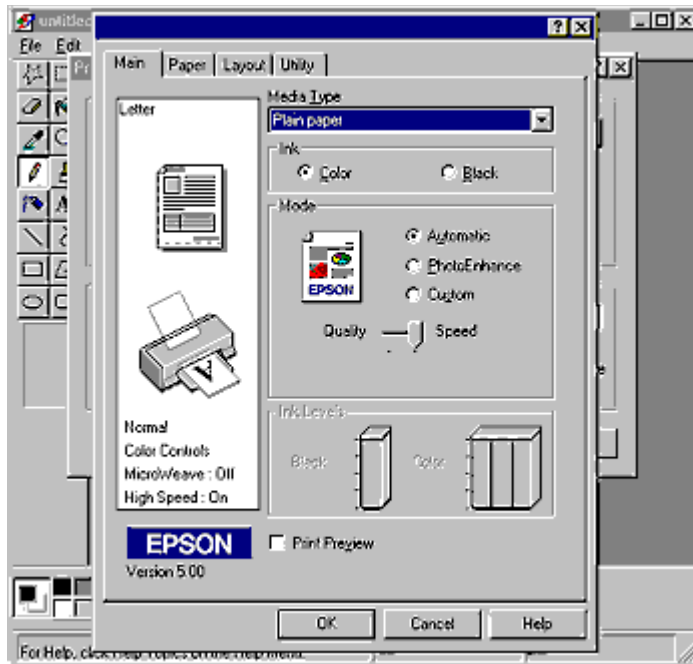


(3) The Print dialog box appears.

(4) Click the Name list box and select your printer from the list.



(5) Click the Properties button to open the printer driver's Main menu, then select the appropriate Media Type setting. For more information, click Help in the printer software window.



[Did you know that special media has a printable side?](#)

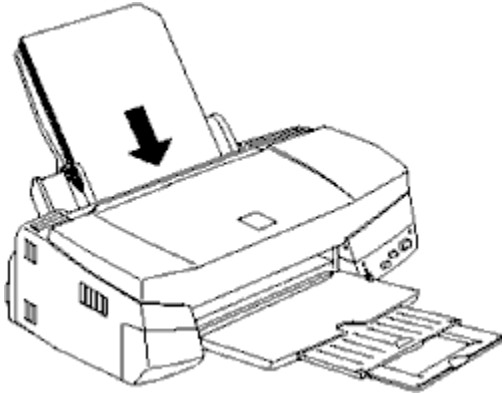
[Clearing the horizontal banding in your printouts](#)

[Obtaining a new ink cartridge](#)

Did you know that special media has a printable side?

The printable side of special paper is the glossy side. Make sure this side is facing up when loading special paper in the printer.

Some special media, such as transparencies, have cut corners to help identify the correct loading direction. Load such media with the cut corner at the top right, as shown in the illustration.



[Making the right Media Type setting](#)

[Clearing the horizontal banding in your printouts](#)

[Obtaining a new ink cartridge](#)

Clearing the horizontal banding in your printouts

You can clear horizontal banding and other problems by cleaning the print head. You can do this from your computer by using the Head Cleaning utility, or from the printer by using the printer's control panel.

- Using the Head Cleaning utility. To start this utility, click the Utility tab in the printer software window, then click the Head Cleaning button.
- Using the printer's control panel. To start the head cleaning procedure, hold down the Cleaning button on the printer's control panel for 3 seconds.

[Making the right Media Type setting](#)

[Do you know that special media has a printable side?](#)

[Obtaining a new ink cartridge](#)

Obtaining a new ink cartridge

When obtaining a replacement ink cartridge, please note the following:

Caution:

EPSON recommends the use of genuine EPSON ink cartridges. Other products not manufactured by EPSON may cause damage to your printer not covered by EPSON's warranties.

Leave the old cartridge installed in the printer until you have obtained a replacement. Otherwise, ink remaining in the print head nozzles may dry out.

Note:

You cannot continue printing with one ink cartridge empty, even if the other cartridge still contains ink. Before printing, replace the empty cartridge.

[Making the right Media Type setting](#)

[Do you know that special media has a printable side?](#)

[Clearing the horizontal banding in your printouts](#)

Preview

File Menu

Print Document

Selecting this option will close the Preview and print the document.

Cancel Print Job

Selecting this option will close the Preview and cancel the print job. The document being previewed will not be printed.

View Menu

Show Tool Bars

Standard

This option toggles the display of the standard tool bar on/off. If checked, the standard tool bar is displayed. The standard tool bar contains buttons which perform the same functionality as those options found in the View and Watermark menus.

Print

This option toggles the display of the print tool bar on/off. If checked, the print tool bar is displayed. The print tool bar contains two buttons which perform the same functionality as those options found in the File menu.

Printable Area



Selecting this option will display a rectangle on the page being previewed. This rectangle is the printable area for the page. The printer cannot print anything which exceeds this rectangle.

Zoom

Fit-to-Screen



This option scales the previewed page so that it just fits the size of the page display window. Select this option if you want to see the entire page at one time.

Maximum



This option displays the previewed page at the maximum possible zoom ratio.

Zoom in



This option enlarges the size of the previewed page by a factor of 2.

Zoom out

This option reduces the size of the previewed page by a factor of 2.

Previous Page



This option displays the page previous to the page currently being previewed. (If there is no previous page then this option is grayed out)

Next Page



This option displays the next page in the document. (If there is no next page then this option is grayed out)

Go to

This option allows you to enter the page number of the page you wish to view.

Option Menu

The Add and Remove options allow you to specify which pages in the document you wish to be printed. To add or remove a page, you must first highlight the page in the list of page icons appearing on the left side of the preview window. Highlight the page by clicking once on the page icon. Then select either the Add or Remove option.

Add Page

The highlighted pages will be added to the list of pages to be printed.

Remove Page

The highlighted pages will be removed from the list of pages to be printed.

Watermark Menu

Setting Dialog



This option displays the watermark settings dialog. This dialog allows you to change any of the current watermark settings.

Undo



This option returns all watermark settings to what they were when the Preview was first opened. If nothing has been changed, this option appears grayed out.

Help Menu

This option displays the help screen for the preview feature.

Paper information

This list shows all EPSON genuine paper types. However, your printer may not support all of the listed paper types; consult your User's Guide for details.

Note: The availability of special media varies by country.

Name	Size	Parts Number
EPSON 360 dpi Ink Jet Paper	A4	S041059
	A4	S041025
	Letter	S041060
	A3	S041065
	A3	S041046
	A3/B	S041066
	A3/B	S041047
	A2	S041078
EPSON Photo Quality Ink Jet Paper	A4	S041061
	A4	S041026
	Letter	S041062
	Legal	S041067
	Legal	S040148
	B	S041070
	B	S041044
	A3	S041068
	A3	S041045
	A3/B	S041069
	A3/B	S041043
	A2	S041079
EPSON Photo Quality Glossy Paper	A4	S041126
	Letter	S041124
	A3	S041125
	A2	S041123
	A3/B	S041133
	USC	
EPSON Photo Quality Glossy Film	A4	S041071
	Letter	S041072

	B	S041075
	A3	S041073
	A3/B	S041074
	A6	S041107
EPSON Photo Quality Ink Jet Card	A6	S041054
	5 X 8	S041121
	10 X 8	S041122
Ink Jet Note Cards A6 (with envelopes)	A6, C6	S041147
Ink Jet Greeting Cards 5 x 8 (with envelopes)	5 X 8, 132 X 220	S041148
Ink Jet Greeting Cards 8 x 10 (with envelopes)	10 X 8, 132 X 220	S041149
EPSON Ink Jet Transparencies	A4	S041063
	Letter	S041064
EPSON Photo Quality Banner Paper	Roll	S041102
EPSON 360 dpi Ink Jet Banner Paper	Roll	S041103
EPSON Photo Quality Self Adhesive Sheet	A4	S041106
EPSON Ink Jet Back Light Film	A3	S041131
	A2	S041130
EPSON Ink Jet Canvas Cloth	Roll	S041132
EPSON Photo Paper	4 X 6	S041134
	A4	S041140
	Letter	S041141
	A3	S041142
	A3/B	S041143
	100 X 150	S041255
	200 X 300	S041254
EPSON Photo Stickers	A6	S041143

EPSON Panoramic Photo Paper	210 X 594	S041145
EPSON Iron-on Cool Peel Transfer Paper	Letter A4	S041153, S041155 S041154
EPSON Premium Ink Jet Plain Paper	A4	S041214
EPSON Matte Paper - Heavyweight	A4	S041256, S041258, S041259

