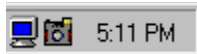


# SnapShot Online Manual

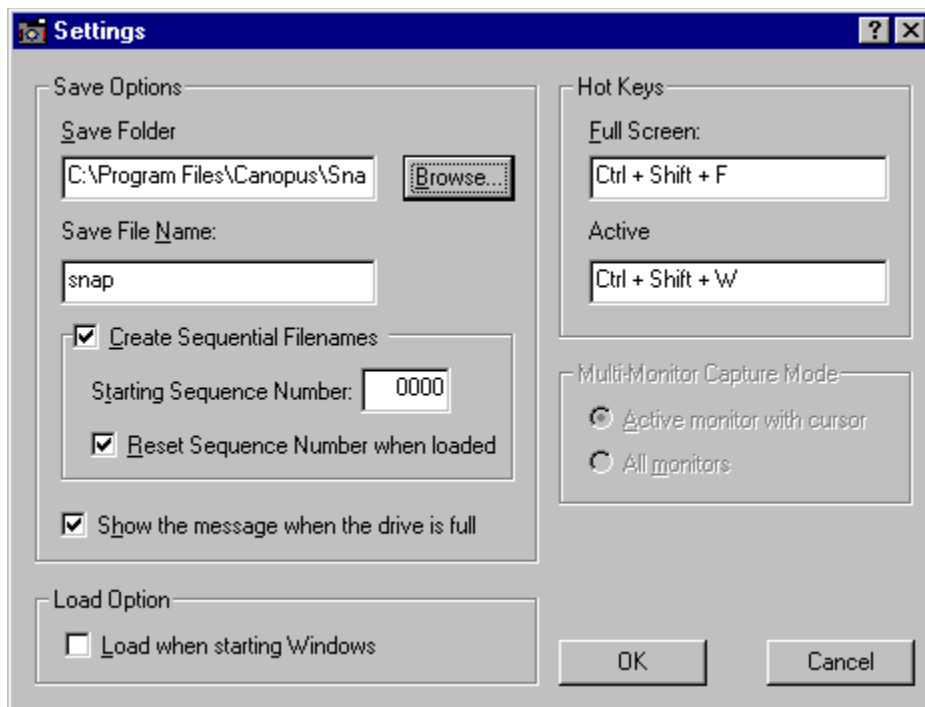
Using SnapShot:

Snap Shot is a Windows utility which captures screen or window images and automatically saves them to a file. It works in a multi-monitor environment and supports DirectDraw and Direct3D as well as secondary 3D graphics card screen captures.

Images are captured by hitting a hot key combination. These hot keys are defined in the Snap Shot Settings window. The Settings window can be accessed from the Snap Shot icon in the Windows Task Bar tray.



The saved image captures are stored in a file with an automatic numbering sequence. The file naming and the location of where the images are saved can be changed in the Settings window.



Closes this dialog box and saves any changes you have made.

Closes this dialog box without saving any changes you have made.

This setting is active when using multiple monitors and determines the capture mode.

Captures the screen image only on the active monitor with the cursor.

Captures the screen image on all of the active monitors.

Determines the location of the where the captured images will be saved.

Enter the folder path for the location of the captured images. Click the Browse... button to search for a path.



Click this button to search for a folder path to save the captured images.

Enter the file name of the captured images.

Hot keys can be set for capturing the active window, screen image, or secondary 3D graphics card image. The hot key is changed by placing the cursor in the field and hitting the hot key desired.

The hot key for capturing a full-screen image. Place the cursor in this field and hit the desired hot key combination.

The hot key for capturing an active window image. Place the cursor in this field and hit the desired hot key combination.

The hot key for capturing a secondary 3D graphics card image. This option is only enabled when using a secondary 3D graphics card.

Check this box so SnapShot will always be started with Windows.

Check this box so enable sequence number mode.



Check this box so reset sequence number to zero when next SnapShot stating.

Input the next stating sequence number.

Check this box so show the message when the drive is full. If you don't show this message when playing games, disable this check box.

