

fNfCfbfNfwf<fv

,í,¶,ß,É

,±,±,Á,í□APrintAgent,ìžã,È<@“\,É,Á,ç,Ä□AŠÈ‘P,É□à-¾,μ,Û,·□B,æ,è□Ú□×,È□à-¾,ð,²—
,É,È,è,½,ç□è□#,í□A,±,ìfwf<fv,ì¶í□ã,ì□mfqgfsfbfN□n,ðfNfŠfbfN,μ•\Ž! ,³,è,½-ÚŽŸ,©,ç,»,è,¼,è,ì□€-
Ú,ìfwf<fv,ð,²—,¾,³,ç□B

PrintAgent

PrintAgent,í□AfvfŠf“f^,ð,æ,è%ø“K,ÉŽg,±,±,Æ,ª,Ä,«,éfvfXfef€
,Ä,·□B**PrintAgent**,É,í□AfvfŠf“f^fXfe□[f^fXfEfBf“fhfE,ª,è,Û,·□B**PrintAgent**,íWindows<N“@Žž,É—
š,ç□ã,ª,è□Af^fXfNfo□[,É**PrintAgent**fAfCfRf“,ª•\Ž! ,³,è,Û,·□B

fvfŠf“f^fXfe□[f^fXfEfBf“fhfE□iPSW□



PrintAgentfAfCfRf“,ð¶íNfŠfbfN,μ•\Ž! ,³,è,½fvfŠf“f^-¼,ìfŠfXfg,©,ç-
Ú“ì,ìfvfŠf“f^,ð‘ð,·,é,Æ□AfvfŠf“f^fXfe□[f^fXfEfBf“fhfE,ª<N“@,μ,Û,·□BfvfŠf“f^fXfe□[f^fXfEfBf“fhf
E,í□A,“Žg,ç,É,È,Á,Ä,ç,éfvf“fsf...□[f^,ì%æ-È□ã,Ä□AfvfŠf“f^,Ä,ì^ó□ü□ó<μ,â—pŽt□Ø,è,È,Ç,ìfGf
%□[,ðŠÄž<,·,é,±,Æ,ª,Ä,«,éfvfXfEfEfA,Ä,·□BfvfŠf“f^fXfe□[f^fXfEfBf“fhfE,í□A^ó□üžž,Éž“@““ì,É—
š,ç□ã,ª,è^ó□ü,ª□[,í,Á,½,±,Æ,ð%æ-È,â%□°□,Ä‘m,ç,¹,Ä,,è,Û,·□B,»,ì,½,ß□A,í,‘,í,‘fvfŠf“f^,Û,Ä‘«,ð
%□^,Ñ^ó□ü,ª□[,í,Á,½,©,Ç,±,©,ðŠm“F,·,é•K—v,ª,,è,Û,¹,ñ□

BPrintAgent,ìfìfbfjg□□[fNfvfŠf“f^,ì^è•à□i,ñ,¾Žg,ç,â,·,³,ð‘ñ<Ÿ,ç,½,μ,Û,·□B
*%□æ-È,í□AMultiWriter 2250H,É□uPrintAgent□vc□[f<fo□[,ðfCf“fXfg□[f<,μ,½—á,Ä,·□B

fqf“fg

n PrintAgentfAfCfRf“,ð¶íNfŠfbfN,·,é,Æ□APrintAgent,ÄŽg—p,Ä,«,éfvfŠf“f^-¼,ì^è—
,ªE»,è,Û,·□BfvfŠf“f^-
¼,ðfNfŠfbfN,·,é,Æ□A,»,ìfvfŠf“f^,ìfvfŠf“f^fXfe□[f^fXfEfBf“fhfE,ª<N“@,μ,Û,·□Bf`fFfbfN,³,è,½□ó‘Ô,ÄfNfŠf
bfN,·,é,Æ□Af`fFfbfN,ª□Ä,ì□AfvfŠf“f^fXfe□[f^fXfEfBf“fhfE,ª□[—¹,μ,Û,·□B

ŽQ□Æ

[PrintAgent,ì,ç,è,ç,è,È<@“\](#)

PrintAgent® ,Æ,Í,H

PrintAgent,Í,AfRf“fsf...[f^,ÆfvfŠf“f^,Æ,Åi•ñ,ð’ŠCEÝ,ÉCEðŠ·,·,é,±,Æ,É,æ,èAfvfŠf“f^,ð,æ,è%ø“K,É,²—
~—p,ç,½,¾,¼,½,ß,lfVfXfef€,Å,·B

n ^óü,ìi□s□óμ,âfvfŠf“f^,ìó’Ô,ð%æ-Ê,Æ%¹□²,Å,“m,ç,¹,μ,Ü,·B

n fAfvfŠfP□[fVf#f“,ðÄ·N“®,,·,é,±,Æ,È,□A^È’O,É^óü,μ,½fhfLf...f□f“fg,ð’Ç
%A^óü,μ,½,èA·”·ªŽw’è^óü,μ,½,è,·,é□A□Ä^óü@“\,ð’ñ<Ý,μ,Ü,·B

n PrintAgent,ÍAflfbfgf□□[fNfvfŠf“f^,É,à’Í%ž,μ,Ä,ç,Ü,·B—f,ê,½,Æ,±,è,É,·,éfvfŠf“f^,ìó’Ô,ª,í,©,ç,É,ç
,Æ,ç,±□—^,ì-â’è,ð’â·□,É%øðCE^,μ,Ü,·Bflfbfgf□□[fN“à,ÉÜ’±,³,è,Ä,ç,éfvfŠf“f^,ìŽg—
p□óμ,ìŠm“F,âANEC□»,ìLANf{□[fh,âLANfAf_fvf^,ìÝ’è,ðs,È,ì,Ü,·B

CE —,É,Ä,ç,Ä

,±,lfVfXfefEjFfA,Æ,».,ì·i□»·”,ÉŠÖ,·,é^è·”,Ü,½,í,·,×,Ä,ìCE —,í“ú—{“d<CŠ”Ž®%øiŽD,É<A’®.,μ,Ü,·B

Copyright © NEC Corporation 1996-1999

All Rights Reserved

-Æ□Ó,É,Ä,ç,Ä

“ú—{“d<CŠ”Ž®%øiŽD,í□A—~—pŽÒ,ª,±,lfVfXfefEjFfA,ð—~—p%Å”\
,É□ðCE□^ÉŠO,ìŠÄ<«□ðCE□,ì,à,Æ,É“®□,³,¹,½,½,ß,É□¶,¶,½·s—~%ov,ì□Ó”C,ð·%o,ç,Ü,¹,ñ□B—~—pŽÒ,í□A—{fV
ftfgfEjFfA,ì^è·”,Ü,½,í’S·”,ðfŠfo□[fXfgf“fWjifAfvfŠf“fO,â<tfRf“fpcfç<,É,æ,èA%øð□íA%øü’ç,É,Ç,·,é,±
,Æ,í,Ä,«.,Ü,¹,ñ□B,Ü,½□A,±,lfVfXfefEjFfA,É·íX,ð%Å,ì,½□ê□±,É,í“®□ì·Ü□Ø,ìí□ÜŠO,Æ,È,è,Ü,·B

Microsoft□AWindows□AWindows NT ,í·Ä□’ Microsoft ŽD,ì·Ä□’,”,æ,Ñ,»,ì¼,ì□’,É,“,é“o~^□x·W,Ä,·B

IBM□APC/AT,í·Ä□’International Business Machines Corporation,ì·Ä□’,”,æ,Ñ,»,ì¼,ì□’,É,“,é“o~^□x·W,Ä,·B

PrintAgent,í“ú—{“d<C(Š”),ì“o~^□x·W,Ä,·B

Windows 98,íMicrosoft Windows 98 operating system ,”,æ,Ñ Microsoft Windows 98 operating system Second
Edition,ì—ª,Ä,·B

Windows 95,íMicrosoft Windows 95 operating system,ì—ª,Ä,·B

Windows NT 3.51,íMicrosoft Windows NT Workstation operating system Version 3.51 ,”,æ,Ñ Microsoft Windows NT
Server operating system Version 3.51,ì—ª,Ä,·B

Windows NT 4.0,íMicrosoft Windows NT Workstation operating system Version 4.0 ,”,æ,Ñ Microsoft Windows NT
Server operating system Version 4.0,ì—ª,Ä,·B



PrintAgent,đ,²~—p,É,È,ê,éŠÂ««

PrintAgent,ÍAMicrosoft® Windows NT® 4.0i“ú–{CEê”Âjã,Ā“®i,·,é\ftfgfEjfa,Ā,·QB

n “®ifRf“fsf...lf^

PC98-NXfvfš[fY,đšÜ,PIBM PC/ATCEÝŠ<@iDOS/V'î%ž<@j,Ü,½,ÍPC-9800fvfš[fY

n “®i,n,r

Microsoft® Windows NT® Workstation 4.0i“ú–{CEê”Âj

Microsoft® Windows NT® Server 4.0i“ú–{CEê”Âj

PrintAgent,đ,²~—p,É,È,Ā,Ā,č,éRf“fsf...lf^,IOS,đ'¼,IOS,ÉfAfbvfjOfCE[fh,·,éÜ,É,ÍA,·ç,©,¶,ßPrintAgent,đfAf“fCf“fXfg[f<,·,é•K—v,³,·,è,Ü,·QB

OSfAfbvfjOfCE[fhCEĀÍA,».,IOS—p,ÌPrintAgent,đfCf“fXfg[f<,μ,Ā,¾,³,čQB

n fRf“fsf...lf^,lfj,fš

,»,é,¼,é,IOS,ì“®iŠÂ««,É€¶,Ü,·QB

PrintAgent,đfNf%ofCfAf“fgjftj[fjofVfXfef€,Ā,²Žg—

p,ìĕ±Afvfš“fgftj[fo,É,Í64MfjofCfĀĕĀ,lfj,fš,đ“<Ü,μ%—p,³,é,é,±,Æ,đ,„,š,μ,Ü,·QB

n fvfš“f^fCf“f^ftf[fX

PC-9800fvfš[fY,Āfvfš“f^,đf[fj<Ü'±,Ā,²~—p,É,È,éĕ±,É,ÍA36fsf“fpf%ofCEf<fCf“f^ftf[fX,ª•K—v,Ā,·B14fsf“fpf%ofCEf<fCf“f^ftf[fX,đ'•”ö,·,éPC-9800,âAPC-H98ASV-H98fvfš[fY,lfpf%ofCEf<fCf“f^ftf[fX,Ā,àPrintAgent,đ,²~—p,č,½,¾,·,Ü,·,ªA—Ā,ì<@“\,đ,“Žg,č,č,½,¾,·,È,č,½,ßAfvfš“f^“ŸfCf“f^ftf[fXf{[fh]iPC-9801-94j,đfRf“fsf...lf^,é'•....,μ,Ā,²~—p,μ,Ā,č,½,¾,±,Æ,đ,„,š,č,½,μ,Ü,·QB

n fvfš“f^fP[fuf<

PC-PRCA-01, PC-CA205,Ü,½,Í“™•iPC98-NXfvfš[fY,đšÜ,PIBM PC/ATCEÝŠ<@j

PC-CA202, PC-CA204,Ü,½,Í“™•iNEC PC-9800fvfš[fYj

n f}fEjX

,²Žg—p,đ,„,š,č,½,μ,Ü,·QB

n ftfEj“fh

PSW,Ā%²qfbfZ[fW,É,æ,éfvfš“f^,ìó'Ô'É'm<@“\,đ,²~—p,É,È,è,½,čĕ±,É•K—v,Ā,·QB,²~—p,É,ÍA,“Žg,č,ìWindows,É'î%ž,μ,½PCMĀ¶,ª%Ā“\,ÉftfEj“fh<@“\,ª•K—v,É,È,è,Ü,·QB,“Žg,č,lfRf“fsf...lf^,É,±,ì<@“\,ª,È,čĕ±,ÍAPCMĀ¶,ª%Ā“\,ÉftfEj“fhf{[fh,âftfEj“fhj[fh,đ,²~—p^Ó,-¾,³,čQB

n flfbfgf[fN

PrintAgent,ÍAflfbfgf[fNĀ,ĀWindows 98/95, Windows NT,Ā:α—L,³,é,Ā,č,éPrintAgent'í%žfvfš“f^,âALANf{[fh]iLANfAf_fvf^j,đ'•....,μflfbfgf[fN,É'¼ÜÜ'±,³,é,½PrintAgent'í%žfvfš“f^,É'í,μ,Ā,à,²~—p,č,½,¾,·,Ü,·QBflfbfgf[fN,đ%î,μ,ĀPrintAgent'í%žfvfš“f^,đ,²~—p,É,È,éĕ±,É,ÍA,“Žg,č,lfRf“fsf...lf^,ìWindows,Ā~—p,Ā,«,éNetBEUIATCP/IPfvfjfgfRf<,É'î%ž,μ,½flfbfgf[fNfAf_fvf^f{[fh]^j[fh,È,Ç,ª•K—v,Ā,·QB,».,ì¼Aflfbfgf[fNfP[fuf<,È,Ç,à•K—v,É,È,è,Ü,·QB

flfbfgf[fN,É'¼ÜÜ'±,³,é,½fvfš“f^,Æ'o•ûCEü'ÉPM,·,é,½,ß,É,ÍANECP/IP Printing System(Windows 98/95),Ü,½,ÍNEC Network Port(Windows NT),ª^óüj[fj,Æ,μ,ĀŽw'è,³,é,Ā,č,éĕ±,ì,Ÿ,²~—p,É,È,è,Ü,·QB^óüj[fj,Æ,μ,Ā,±,é,ç^ÈŠO,lfj[fj[iDLC]ALPR,È,Çj,đ,“Žg,č,É,È,éĕ±,É,ÍAPrintAgent,đfAf“fCf“fXfg[f<,μ,Ā,²~—p,¾,³,čQB

,²^Ó

n fvfš“f^,lfvfjpfefB,ìA[mfj[fjgn]m'o•ûCEüftj[fj,đ—LCEø,É,·,é¶,ª`ffbfN,³,é,Ā,č

,É,ç□ê□#,í□A,»),ìvfšf“f^,Éí,μPrintAgent,ì<@“\,í—~—p,Å,«,Ü,¹,ñ□B

n fvfšf“f^fofbftf@,â□APC-9800fvfš□[fY,ÅfRf“fsf...□[f^-{‘í,É•t’@,ìvfšf“f^fCf“f^ftfF□[fX•íŠ·fAf_fvf^,ð
%ô,μ,ÄPrintAgent‘í%žfvfšf“f^,ð□Ú’±,μ,Ä,ç,é□ê□#,í□APrintAgent,í,²~—p,É,È,è,Ü,¹,ñ□B,±,ì□ê□#□A,±
,ìvfšf“f^,É,Ä,ç,Ä,í□Afvfšf“f^,ìvf□fpfefB,ì□mf□[fg□n□□m‘o•ûCEüftf□[fg,ð—
LCEø,É,·,é□n,ìf`fFbfN,ð,í,,μ,Ä,“Žg,ç,,³/4,³,ç□B

n Windows NT 4.0,ìvfšf“f^fv□[f<,íftf□[fg,μ,Ä,ç,Ü,¹,ñ□Bf|fbfgf□□[fN<α—Lfvfšf“f^,ª¹/4□Ú,Ä,È,ª,Ä,Ä,ç
,éfRf“fsf...□[f^,ìOS,ªWindows NT 4.0,ì□ê□#□AWindows NT 4.0□ã,ì,·,x,Ä,ìvfšf“f^,Ä□mfvf□pfefB□n□
□mf□[fg□n□□mfvfšf“f^fv□[f<,ð—LCEø,É,·,é□n,ìf`fFbfN,ð,í,,μ,Ä,²Žg—p,,³/4,³,ç□B□mfvfšf“f^fv□[f<,ð—
LCEø,É,·,é□n,ðf`fFbfN,μ,½□ê□#□Afvfšf“f^,ì□ó‘Ô,ª□³,μ,•Ž!³,è,Ü,¹,ñ□B□Ú,μ,,ìvfšf“f^,ìwf<fv,ð,²—,-
,³/4,³,ç□B

n ,²Žg—p,É,È,Ä,Ä,ç,éfvfšf“f^,É,æ,Ä,Ä□APrintAgent,ªftf□[fg,μ,Ä,ç,éOS,â□ALANf{□[fh□iLANfAf_fvf^□j,ìŽí
—p,ª^Ü,È,è,Ü,·□B□Ú,μ,,í□Afvfšf“f^,É•t’@,ìft□[fU□[fyf}fjf...fAf<“™,Ä,²Šm“F,,³/4,³,ç□B

ŠÖ~A□€-Ú

[PrintAgent,Å,ìf□\[fg,ì□Ý‘è](#)

PrintAgent,ì□V,μ,ϕ<@”

PrintAgent,ì<@”\,Í,±,¿,ϕ,ð,²—,3/4,³,ϕ□B

PrintAgent,ì,ϕ,ë,ϕ,ë,È<@”\

PrintAgent, Ì, ç, è, ç, è, È < @ " \

PrintAgent, Å, í □ A ^ È % ° , Ì < @ " \ , ð , " Ž g , ç , ç , ½ , ¾ , ¯ , Ü , · □ B

n □ u PrintAgent □ v f c □ [f : f o □ [PrintAgent f Š f v f Š f " f g 2 □ A f v f Š f " f ^ f X f e □ [f ^ f X f e f B f " f h f E , â f w f < f v , È , Ç PrintAgent, Ì , ç , è , ç , è , È < @ " \ , ð Š È ' P , È < N " @ , · , é , ± , Æ , ¢ , Å , « , Ü , · □ B

n PrintAgent f Š f v f Š f " f g 2 PrintAgent f Š f v f Š f " f g 2 , í □ A , · , Å , È ^ ó □ ü , μ , ½ f h f l f . . . f □ [f g , ð f A f v f Š f P □ [f v f f " , Ì □ Ä < N " @ , ð , · , é , ± , Æ , È , Ç % ° Å ^ ó □ ü , μ , ½ , è □ A · " · ¢ Ž w ' è ^ ó □ ü , μ , ½ , è , · , é □ A □ Å ^ ó □ ü < @ " \ , ð ' ñ < Y , μ , Ü , · □ B

n f v f Š f " f ^ f X f e □ [f ^ f X f e f B f " f h f E f v f Š f " f ^ f X f e □ [f ^ f X f e f B f " f h f E , í □ A ^ ó □ ü Š Ž n , â □ I — ¹ □ A — p Ž t □ Ø , è □ A " d C E ¹ O F F , È , Ç , Ì f v f Š f " f ^ , Ì □ ó ' Ö , ð Ž è C E ³ , Ì f p f f R f " , È % ° æ — È , â % ° ¹ □ ° , È , æ , è Š Ä Ž < , · , é , ± , Æ , ¢ , Å , « , Ü , · □ B

n f v f Š f " f ^ Š Ç — □ f t □ [f e f B f Š f e f B f v f Š f " f ^ Š Ç — □ f t □ [f e f B f Š f e f B , Æ , í □ A f l f b f g f □ □ [f N f v f Š f " f ^ , â f □ □ [f f f : f v f Š f " f ^ □ A L A N f { □ [f h , à , μ , - , Í L A N f A f _ f v f ^ , Å □ Ú ' ± , ¢ , è , ½ f v f Š f " f ^ , È , © , © , í , ç , , □ A PrintAgent, Å ' ñ < Y , ¢ , è , Å , ç , é < @ " \ , ð % ° ð " K , È , ² — ~ — p , ç , ½ , ¾ , , ½ , ß , Ì f t □ [f e f B f Š f e f B , Å , · □ B

n f v f Š f " f ^ Ž © " @ □ Ø ' Ö ^ ó □ ü , μ , æ , x , Æ , μ , ½ f v f Š f " f ^ , ¢ ^ ó □ ü ' t , â — p Ž t □ Ø , è , È , Ç , ¾ , Å , ½ , è , μ , ½ □ è □ # □ A , · , @ , È Ž g — p % ° Å " \ , È ' ¼ , Ì f v f Š f " f ^ , È Ž © " @ " I , È □ Ø , è ' Ö , Ì , Å ^ ó □ ü , ð Ž Ä □ s , · , é , ± , Æ , ¢ , Å , « , Ü , · □ B

n f □ □ [f ' È ' m □ i N E C e - m a i l f □ [f e f i f " f X □ [f v f Š f " f ^ , Ì · Ü Ž ç □ i · ñ , ð Ž © " @ " I , È " d Ž q f □ □ [f < , Å f v f Š f " f ^ Š Ç — □ Ž Ö , È ' È ' m , · , é , ± , Æ , ¢ , Å , « , Ü , · □ B

n Web PrintAgent f C f " f ^ □ [f l f b f g f u f % ° f E f U , Å f v f Š f " f ^ , Ì □ ó < μ , ð Š m " F , · , é , ± , Æ , ¢ , Å , « , Ü , · □ B

n f Š f , □ [f g f p f l f < f Š f , □ [f g f p f l f < , Å , í □ A f l f b f g f □ □ [f N f v f Š f " f ^ □ A f □ □ [f f f : f v f Š f " f ^ , È ' í , μ □ A f v f Š f " f ^ , Ì ' € □ [f p f l f < , Å □ s , Ì , é , Ì , Æ , Ü , Ú " - " ™ , Ì Š e Ž í □ Y ' è ' I , ð " Ç , Y □ ž , Y □ A , Ü , ½ □ A □ Y ' è ' I , Ì ' , « □ ž , Y , ð f R f " f s f . . . □ [f ^ □ ä , © , ç □ s , x , ± , Æ , ¢ , Å , « , Ü , · □ B

, ² □ ^ Ö

, " Ž g , ç , È , È , Å , Ä , ç , é f v f Š f " f ^ < @ Ž í , È , æ , Å , Ä □ A , ² — — p , È , È , è , é < @ " \ , ¢ ^ Ü , È , è , Ü , · □ B □ Ú , μ , ç < @ " \ , Ì □ à - ¾ , í □ A f t □ [f U □ [f Y f } f j f . . . f A f < , © f w f < f v , ð , ² Ž Q □ Æ , , ¾ , ¾ , ç □ B

PrintAgent, ĩ<N"®

PrintAgent, ĩWindows NT 4.0f□fOfJf“Žž,ÉŽ©“®“l,É—š,¿□ã,ª,è□APrintAgentfAfCfRf“,af^fXfNfo□[,É•\
Ž|,³,è,Û,·□B

n flfbfgf□□[fN<α—LfvfŠf“f^,ð,²—~—p,ì□ê□#□Aft□[fo,Æ,È,éfRf“fsf...□[f^,ÆfNf%ofCfAf“fg,Æ,È,éfRf“fsf...
□[f^,ì—¼•û,ÅPrintAgent,ªfCf“fXfg□[f<,³,è,Ä,ç,é•K—v,ª, ,è,Û,·□B

n PrintAgent,ª<N“® ,μ,Ä,ç,È,ç□ê□#,í□A□,ðfNfŠfbfN,·,é,©□A□mfXf^□[fg□n□□mfvf□fOf%of€□n□
□mfvfŠf“f^<@Ží-¼□n,ì’t,ì□A□mPrintAgentfVfXfef€<N“®□n,ðfNfŠfbfN,·,é,±,Æ,Ä<N“®,Ä,«,Û,·□B

n PrintAgent, ĩ<@“\,ð,²—~—p,É,È,é□ê□#,É□APrintAgent,ªŽ©“®“l,É<N“®,·,é,±,Æ,ª, ,è,Û,·□B

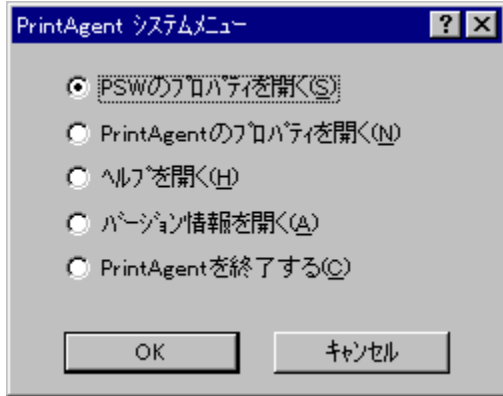
fqf“fg

n PrintAgent,ª•s□³□l—¹,μ,½□ê□#,í□AZÿ,ì□€—Ú,ðŽQ□Æ,μ,Ä,,¾,³,ç□B

PrintAgent,ª<N“®,μ,Ä,ç,È,ç

PrintAgentVfXfef€f[]fjf...[]

PSW,lfvf[]fpfefB,ðŠJ,ç,½,è[]APrintAgent,lfvf[]fpfefB,ðŠJ,ç,½,è,·,é,±,Æ,ª,Å,«,Ü,·[]B
,ðfNfŠfbfN,·,é,©[]A[]mfXf^[][fg[]n[]|[]mfvf[]fOf%of€[]n[]|[]mfvfŠf“f^<@Ži-
¼[]n,i’t,[]A[]mPrintAgentVfXfef€f[]fjf...[][]n,ðfNfŠfbfN,·,é,ÆŠJ,,±,Æ,ª,Å,«,Ü,·[]B
,²—,É,È,è,½,ç[]€-Ü,ðfNfŠfbfN,μ,Ä,,¾,³,ç[]B



ŠÖ~A[]€-Ü

[PSW,lfvf\[\]fpfefB](#)

[PrintAgent,lfvf\[\]fpfefB](#)

[PrintAgent,i\[\]|—¹](#)

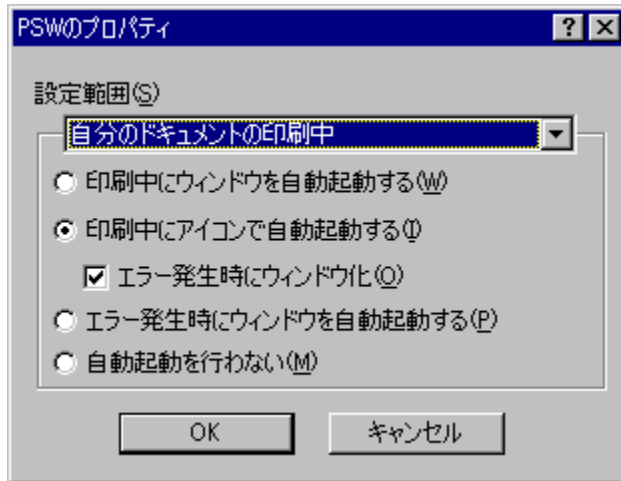
PSW,lfvf[]pfefB

PSW,lfvf[]pfefB,Å,í[]AfvfŠf“f^fXfe[]f^fXfEfBf“fhfE[]iPSW[]j,ìŽ““@<N“@,ì[]Ý’è,ð[]s,!,Ü,·[]BPrintAgentfAfCfR
f“,ð%°EfNfŠfbfN,μ,Ä•Ž!,³,è,é[]ffj...[][,©,ç[]mPSW,lfvf[]pfefB[]n,ðfNfŠfbfN,·,é,±,Æ,ÅŠj,,±,Æ,ª,Å,«,Ü,·[]B

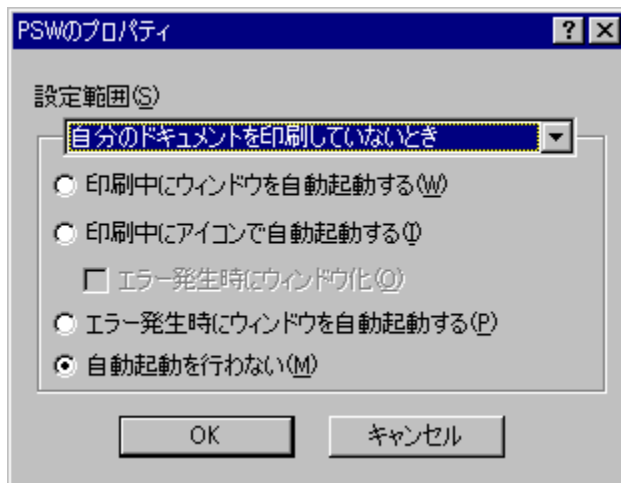
•í[]X,ì•K—v,ª,È,ç[]é[]#,í,»,ì,Ü,Ü,ì[]Ý’è,Å,“Žg,ç,,¾,¾,ç[]B

,²—,É,È,è,½,ç[]€—Ü,ðfNfŠfbfN,μ,Ä,,¾,¾,ç[]B

□mŽ©•ª,ìfhfLf...f[]f“fg,ì^ó[]ü’t[]n,ð‘l’ð,μ,½[]é[]#



□mŽ©•ª,ìfhfLf...f[]f“fg,ð^ó[]ü,μ,Ä,ç,È,ç,Æ,«[]n,ð‘l’ð,μ,½[]é[]#



f[]f“fg

n PSW,lfvf[]pfefB,Å[]Ý’è,μ,½“à—e,ìft[]fU,²,Æ,È•Ü’¶,³,è[]A,»,ìfRf“fsf...[]f^,É[]Ü’±,³,è,Ä,ç
,é,·,x,Ä,ìPrintAgent‘í%°žfvfŠf“f^,É<κ’È,Å,·[]B

n ~A’±^óü,ì“r’t,Å,ì[]Ý’è,í—LCEø,È,È,è,Ü,¹,ñ[]B[]Ý’è,μ,½“à—e,í[]AZŽ%°ñPSW<N“@Žž,©,ç—
LCEø,È,È,è,Ü,·[]B

n []Ý’è“íí,Å[]mŽ©•ª,ìfhfLf...f[]f“fg,ð^ó[]ü,μ,Ä,ç,È,ç,Æ,«[]n,ª‘l’ð,³,è,Ä,ç,é,Æ,«,ì[]Ý’è[]€—
Ü,í[]AfvfŠf“f^,ðŽÀ[]Ü,ÉŠÇ—[],μ,Ä,ç,é“Á’è,ìfRf“fsf...[]f^,È,Ç,Å,²—~p,É,È,é,Æ•Ö—,Ä,·[]B

,²^ó

n , "Žg,č,É,È,Á,Ä,č,éfvfŠf"f^,É,æ,Á,Ä,í□A□Ý'è"í^í,ì□mŽ©•ª,ìfhfLf...f□f"fg,đ^ó□ü,μ,Ä,č,È,č,Æ,«□n,í,²~—
p,É,È,é,È,č□ê□‡,ª, ,è,Ü,·□B,"Žg,č,É,È,Á,Ä,č,éRf"fšf...□[f^,É-{□€-Ú,É'í%ž,μ,Ä,č
,éfvfŠf"f^,ìPrintAgent,ªfCf"fXfg□[f<,³,è,Ä,č,é□ê□‡,í□mŽ©•ª,ìfhfLf...f□f"fg,đ^ó□ü,μ,Ä,č,È,č,Æ,«□n,ì□€-
Ú,í'í'đ%ž\,É,È,è,Ü,·,ª□A'í%ž,μ,Ä,č,È,čfvfŠf"f^,É'í,μ,Ä,í□Ý'è,μ,½□€-Ú,í-³Ž<,³,è□A□mŽ©•ª,ìfhfLf...
f□f"fg,ì^ó□ú't□n,ì,Ý,²~—p,č,½,¾,¯,Ü,·□B□Ú,μ,,í□AfvfŠf"f^,ìft□[fU□[fYf}fjf...fAf<,đ,²—
,É,È,é,©□A,"Žg,č,É,È,Á,Ä,č,éfvfŠf"f^,ìPSW,ìfwf<fv,đ,²ŽQ□Æ,,¾,³,č□B

n flfbfgf□□[fN<α—LfvfŠf"f^,đ,²Žg—p,ì□ê□‡□Aft□[fofRf"fšf...□[f^,ìOS,ªWindows 98/95□Afnf
%ofCfAf"fgrf"fšf...□[f^,ìOS,ªWindows NT,ì,Æ,«,ì□Afnf%ofCfAf"fgrf"fšf...□[f^,É," ,č
,ÄŽ©"®<N"®,·,é□Ý'è,É,È,Á,Ä,č,Ä,àPSW,ªŽ©"®<N"®,μ,È,č□A,Ü,½,ìfof<□[fvfvfŠf"f^—pPSW,ì^ó□ü□I—
¹'É'm,ª•Žì,³,è,È,č□ê□‡,ª, ,è,Ü,·□Bfnf%ofCfAf"fgrf"fšf...
□[f^,đ□Ä<N"®,·,é,©□AfofOflf",μ'¼,·,Æ□³□í,ÉŽ©"®<N"®,·,é,æ,α,É,È,è,Ü,·□B

n fOf<□[fvfvfŠf"f^,đflfbfgf□□[fN<α—LfvfŠf"f^,Æ,μ,Ä,²~—p,μ,Ä,č,Ä□Aft□[fofRf"fšf...□[f^,ìOS,ªWindows
98/95,ì□ê□‡□Aft□[fofRf"fšf...□[f^,É," ,č,ÄŽ©•ª,ìfhfLf...f□f"fg,đ^ó□ü,μ,Ä,č,È,č
,Æ,«Ž©"®<N"®,μ,È,č□Ý'è,É,È,Á,Ä,č,Ä,à□A'¼,ìft□[fU,ìfhfLf...
f□f"fg^ó□ü,Áfof<□[fv,É'®,·,éCEÂ□X,ìfvfŠf"f^,ìPSW,ªŽ©"®<N"®,·,é□ê□‡,ª, ,è,Ü,·□B

□mŽ©•ª,ìfhfLf...f□f“fg,ì^óü’t□n,ì,Æ,«

PrintAgent’Í%žfvfŠf“f^,É’í,μ,ÄŽ©•ª,ì^óüfhfLf...f□f“fg,ð’—
□M,μžn,β,½,Æ,«□APSW,ðŽ©“@“I,ÉfEfBf“fhfE□ó’Ô,Å<N“@,μ,Û,·□B

□mŽ©•ª,ìfhfLf...f□f“fg,ð^óü,μ,Ä,ç,È,ç,Æ,«□n,ì,Æ,«

PrintAgent’Í%žfvfŠf“f^,É’í,μ,ÄŽ©•ª,ìfhfLf...f□f“fg^ÈŠO,ìfhfLf...f□f“fg,ª’—
□M,ª,èžn,β,½,Æ,«□APSW,ðŽ©“@“I,ÉfEfBf“fhfE□ó’Ô,Å<N“@,μ,Û,·□B

n fXfv□[f<Š]žn,ìžž“_ÄfGf%□[,ª“□¶,μ,Ä,ç,é,Æ,«,í□A,½,¾,¿,ÉfEfBf“fhfE•\Ž!,μ,Û,·□B

n ft□[fU,ª^óü,μ,½,·,x,Ä,ì^óüfhfLf...f□f“fg,É,Ä,ç,Ä□A^óü,ª□I—¹□A,à,μ,,í□A^óü,ª%½,ç,©,ì—□—
R,É,æ,è’tŽ~ª,è,½□è□‡,ÉfEfBf“fhfE,ðŽ©“@“I,É□I—¹,μ,Û,·□B

,²’□^Ó

n fT□[fo,ð%oi,ª,,ÉLANf{□[fh□iLANfAf_fvf^□j,ðŽg—p,μ,Ä,ç,é□è□‡,í□AŽ©•ª,ìfhfLf...
f□f“fg^ÈŠO,ì^óü,ª□s,í,è,Ä,àŽ©“@<N“@,μ,Û,¹,ñ□B

PrintAgent'Í%žfvfŠf“f^,É'Í,μ,ÄŽ©•ª,ì^óüfhfLj...f“fg,đ'—
□M,μŽn,β,½,Æ,«□APSW,đŽ©“®“I,ÉfEfBf“fhfE□ó'Ô,Â<N“® ,μ,Û,·□B
n fXfv□[f<ŠJŽn,ìŽŽ“_ ,ĂfGf%□□[,ª“□¶,μ,Ä,ç,é,Æ,« ,Í□A,½,¾,¿,ÉfEfBf“fhfE•\Ž!,μ,Û,·□B
n ft□[fU,ª^óü,μ,½,·,×,Ă,ì^óüfhfLj...f“fg,É,Â,ç,Ă□A^óü,ª□—¹□A,à,μ,,Í□A^óü,ª%½,ç,©,ì—□—
R,É,æ,è'tŽ~,³,ê,½□é□‡,ÉfEfBf“fhfE,đŽ©“®“I,É□I—¹,μ,Û,·□B

,²'□^Ó

n fT□[fo,đ%î,³,,ÉLANf{□[fh□iLANfAf_fvf^□j,đŽg—p,μ,Ä,ç,é□é□‡,Í□AŽ©•ª,ìfhfLj...
f“fg^ÈŠO,ì^óü,ª□s,í,ê,Ă,àŽ©“®<N“® ,μ,Û,¹,ň□B

PrintAgent'Í%žfvfŠf“f^,É'Í,μ,ÄŽ©•ª,ìfhfLf...f“fg^ÈŠO,ìfhfLf...f“fg,ª'—
□M,³,êŽn,ß,½,Æ,«□APSW,ðŽ©“®“I,ÉfEfBf“fhfE□ó'Ô,Å<N“® ,μ,Û,·□B
n fXfv□[f<ŠJŽn,ìŽŽ“_ ,ÅfGf%□□[,ª“□¶,μ,Ä,ç,é,Æ,« ,Í□A,½,¾,¿,ÉfEfBf“fhfE•\Ž!,μ,Û,·□B
n ft□[fU,ª^ó□ü,μ,½,·,×,Ä,ì^ó□üfhfLf...f“fg,É,Â,ç,Ä□A^ó□ü,ª□I—¹□A,à,μ,,Í□A^ó□ü,ª%½,ç,©,ì—□—
R,É,æ,è'tŽ~,³,ê,½□é□¶,ÉfEfBf“fhfE,ðŽ©“®“I,É□I—¹,μ,Û,·□B

,²'□^Ó

n fT□[fo,ð%ò,³,,ÉLANf{□[fh□iLANfAf_fvf^□j,ðŽg—p,μ,Ä,ç,é□é□¶,Í□AŽ©•ª,ìfhfLf...
f“fg^ÈŠO,ì^ó□ü,ª□s,í,é,Ä,àŽ©“®<N“® ,μ,Û,¹,ñ□B

□mŽ©•ª,lfhfLf...f□f“fg,ì´ó□ù´t□n,ìPSW,ì“®□ì,©□A□mŽ©•ª,lfhfLf...f□f“fg,ð´ó□ü,µ,Ä,ç,È,ç
,Æ,«□n,ì“®□ì,©,ð´ì´ð,µ,Ü,·□B

,²´□´Ó

- n ,´Žg,ç,È,È,Á,Ä,ç,éfvfŠf“f^,É,æ,Á,Ä,í□A□Ý`è“í´í,ì□mŽ©•ª,lfhfLf...f□f“fg,ð´ó□ü,µ,Ä,ç,È,ç,Æ,«□n,ì²—~—
p,É,È,è,È,ç□é□‡,ª, ,è,Ü,·□B,´Žg,ç,È,È,Á,Ä,ç,éfrf“fsf...□[f^,É-□€-Ú,É´í%ž,µ,Ä,ç
,éfvfŠf“f^,ìPrintAgent,ªfCf“fXfg□[f<³,è,Ä,ç,é□é□‡,ì□mŽ©•ª,lfhfLf...f□f“fg,ð´ó□ü,µ,Ä,ç,È,ç,Æ,«□n,ì□€-
Ú,í´ì´ð%Ä“\,É,È,è,Ü,·,ª□A´í%ž,µ,Ä,ç,É,çfvfŠf“f^,É´í,µ,Ä,í□Ý`è,µ,½□€-Ú,í-³Ž<³,è□A□mŽ©•ª,lfhfLf...
f□f“fg,ì´ó□ù´t□n,ì,Ý,²—~—p,ç,½,¾,´,Ü,·□B□Ü,µ,í□AfvfŠf“f^,ìft□[fU□[fYf}fjf...fAf<ð,²—
,É,È,é,©□A,´Žg,ç,È,È,Á,Ä,ç,éfvfŠf“f^,ìPSW,ìfwf<fv,ð,²ŽQ□Æ,¾,¾,ç□B
- n flfbfgf□□[fN<ª—LfvfŠf“f^,ð,²Žg—p,ì□é□‡□Aft□[fofRf“fsf...□[f^,ìOS,ªWindows 98/95□Afnf
%ofCfAf“fgfRf“fsf...□[f^,ìOS,ªWindows NT,ì,Æ,«,ì□Afnf%ofCfAf“fgfRf“fsf...□[f^,É,´,ç
,ÄŽ©“®<N“®,·,é□Ý`è,É,È,Á,Ä,ç,Ä,àPSW,ªŽ©“®<N“®,µ,È,ç□A,Ü,½,ìfof<□[fvfvfŠf“f^—pPSW,ì´ó□ü□ì—
¹´É´m,ª•Žì,³,è,È,ç□é□‡,ª, ,è,Ü,·□Bfnf%ofCfAf“fgfRf“fsf...
□[f^,ð□Ä<N“®,·,é,©□Afof□fj“f“,µ¹⁄,·,Æ□³í,ÉŽ©“®<N“®,·,é,æ,ª,É,È,è,Ü,·□B
- n fofof<□[fvfvfŠf“f^,ðflfbfgf□□[fN<ª—LfvfŠf“f^,Æ,µ,Ä,²Žg—p,µ,Ä,ç,Ä□Aft□[fofRf“fsf...□[f^,ìOS,ªWindows
98/95,ì□é□‡□Aft□[fofRf“fsf...□[f^,É,´,ç,ÄŽ©•ª,lfhfLf...f□f“fg,ð´ó□ü,µ,Ä,ç,È,ç
,Æ,«Ž©“®<N“®,µ,È,ç□Ý`è,É,È,Á,Ä,ç,Ä,à□A¹⁄,ìft□[fU,ìhfLf...
f□f“fg^ó□ü,Àfofof<□[fv,É´®,·,éçÆÄ□X,ìfvfŠf“f^,ìPSW,ªŽ©“®<N“®,·,é□é□‡,ª, ,è,Ü,·□B

□mŽ©•ª,lfhfLf...f□f“fg,ì^óü’t□n,ì,Æ,«

PrintAgent‘í%žfvfŠf“f^,É‘í,μ,ÄŽ©•ª,ì^óüfhfLf...f□f“fg,ð’—

□M,μžn,β,½,Æ,«□APSW,ðŽ©“®“I,ÉfAfCfRf“□ó‘Ô,Å<N“®,μ,Û,·□B

□mŽ©•ª,lfhfLf...f□f“fg,ð^óü,μ,Ä,ç,È,ç,Æ,«□n,ì,Æ,«

PrintAgent‘í%žfvfŠf“f^,É‘í,μ,ÄŽ©•ª,lfhfLf...f□f“fg^ÈŠO,lfhfLf...f□f“fg,ª’—

□M,ª,èžn,β,½,Æ,«□APSW,ðŽ©“®“I,ÉfAfCfRf“□ó‘Ô,Å<N“®,μ,Û,·□B

n fXfv□[f<Š]žn,ìžž“_„ÄfGf%□[,ª“□¶,μ,Ä,ç,é,Æ,«,í□AfEfBf“fhfE•\Ž!,¹,□A,½,¾,¿,ÉfAfCfRf“•\Ž!,μ,Û,·□B

n ft□[fU,ª^óü,μ,½,·,x,Ä,ì^óüfhfLf...f□f“fg,É,Ä,ç,Ä□A^óü,ª□I—¹□A,à,μ,,Í□A^óü,ª%½,ç,©,ì—□—

R,É,æ,è’tŽ~,ª,è,½□è□‡,ÉfAfCfRf“,ðŽ©“®“I,É□I—¹,μ,Û,·□B

,²’□^Ó

n fT□[fo,ð%oi,ª,,ÉLANf{□[fh□iLANfAf_fvf^□j,ðŽg—p,μ,Ä,ç,é□è□‡,Í□AŽ©•ª,lfhfLf...

f□f“fg^ÈŠO,ì^óü,ª□s,í,è,Ä,àŽ©“®<N“®,μ,Û,¹,ñ□B

PrintAgent'Í%žfvfŠf“f^,É'Í,μ,ÄŽ©•ª,ì^óüfhfLf...f“fg,đ'—
□M,μŽn,β,½,Æ,«□APSW,đŽ©“®“l,ÉfAfCfRf“□ó'Ô,Å<N“® ,μ,Ü,·□B
n fXfv□[f<ŠJŽn,ìŽŽ“_ ,ÄfGf%□□[,ª“□¶,μ,Ä,ç,é,Æ,« ,Í□AfEfBf“fhfE•\Žì,¹, ,□A,½,¾,¿,ÉfAfCfRf“•\Žì,μ,Ü,·□B
n ft□[fU,ª^óü,μ,½,·,x,Ä,ì^óüfhfLf...f“fg,É,Â,ç,Ä□A^óü,ª□—¹□A,à,μ,,Í□A^óü,ª%½,ç,©,ì—□—
R,É,æ,è'tŽ~,³,è,½□é□‡,ÉfAfCfRf“ ,đŽ©“®“l,É□—¹,μ,Ü,·□B

,²'□^Ó

n fT□[fo,đ%ôi,³, ,ÉLANf{□[fh□iLANfAf_fvf^□j,đŽg—p,μ,Ä,ç,é□é□‡,Í□AŽ©•ª,ìfhfLf...
f“fg^ÈŠO,ì^óü,ª□s,í,é,Ä,àŽ©“®<N“® ,μ,Ü,¹,ñ□B

PrintAgent'Í%žfvfŠf“f^,É'Í,μ,ÄŽ©•ª,ìfhfLj...f“fg^ÈŠO,ìfhfLj...f“fg,ª'—
□M,³,êŽn,ß,½,Æ,«□APSW,ðŽ©“®“l,ÉfAfCfRf“□óÔ,Å<N“® ,μ,Û,·□B

n fXfv□[f<ŠJŽn,ìŽŽ“_ ,ÅfGf%□□[,ª“□¶,μ,Ä,ç,é,Æ,« ,Í□AfEfBf“fhfE•\Žì,¹, ,□A,½,¾,¿,ÉfAfCfRf“•\Žì,μ,Û,·□B

n ft□[fU,ª^óü,μ,½,·,x,Ä,ì^óüfhfLj...f“fg,É,Â,ç,Ä□A^óü,ª□—¹□A,à,μ,,Í□A^óü,ª%½,ç,©,ì—□—
R,É,æ,è'tŽ~,³,ê,½□é□‡,ÉfAfCfRf“ ,ðŽ©“®“l,É□—¹,μ,Û,·□B

,²'□^Ó

n fT□[fo,ð%î,³, , ,ÉLANf{□[fh□iLANfAf_fvf^□j,ðŽg—p,μ,Ä,ç,é□é□‡,Í□AŽ©•ª,ìfhfLj...
f“fg^ÈŠO,ì^óü,ª□s,í,é,Ä,àŽ©“®<N“® ,μ,Û,¹,ñ□B

□mŽ©•ª,ìfhfLf...f□f“fg,ì^óü’t□n,ì,Æ,«

PrintAgent’Í%žfvfŠf“f^,É’Í,μ,ÄŽ©•ª,ì^óüfhfLf...f□f“fg,ð’—

□M,μžn,β□APSW,ðŽ©“®“I,ÉfAfcRf“□ó’Ô,Å<N“® ,μ,½,Æ,«,É□AfvfŠf“f^,ÅfGf%□[”-

□¶Žž,ÉŽ©“®“I,ÉfEfbf“fhfE•\Ž!,É□Ø,è’Ö,í,é,©,Ç,α,©,ð’I’ð,Å,«,Ü,·□B

□mŽ©•ª,ìfhfLf...f□f“fg,ð^óü,μ,Ä,ç,È,ç,Æ,«□n,ì,Æ,«

PrintAgent’Í%žfvfŠf“f^,É’Í,μ,ÄŽ©•ª,ìfhfLf..f□f“fg^ÈŠO,ìfhfLf...f□f“fg,ª’—

□M,³,èžn,β□APSW,ðŽ©“®“I,ÉfAfcRf“□ó’Ô,Å<N“® ,μ,½,Æ,«,É□AfvfŠf“f^,ÅfGf%□[”-

□¶Žž,ÉŽ©“®“I,ÉfEfbf“fhfE•\Ž!,É□Ø,è’Ö,í,é,©,Ç,α,©,ð’I’ð,Å,«,Ü,·□B

n fGf%□[”□¶Žž,ÉŽ©“®“I,ÉfEfbf“fhfE•\Ž!,É□Ø,è’Ö,í,é,Ü,·□B

n fGf%□[,ª%ð□œ,³,è,½□ê□‡,Í□AŽ©“®“I,ÉfAfcRf“□ó’Ô,É-β,è,Ü,·□B

PrintAgent'Í%žfvfŠf“f^,É'Í,μ,ÄŽ©•ª,ì^óüfhfLj...f“fg,đ'—
M,μŽn,βAPSW,đŽ©“®“I,ÉfAfCfRf““ó'Ô,Å<N“®,μ,½,Æ,«,ÉAfvfŠf“f^,ÅfGf%o[“-
“Žž,ÉŽ©“®“I,ÉfEfBf“fhfE•\Ž!,ÉØ,è'Ö,í,é,©,Ç,α,©,đ'!đ,Å,«,Ü,·B
n fGf%o[““Žž,ÉŽ©“®“I,ÉfEfBf“fhfE•\Ž!,ÉØ,è'Ö,í,è,Ü,·B
n fGf%o[“,ª%ðœ,³,è,½é†,ÍAZ©“®“I,ÉfAfCfRf““ó'Ô,É-β,è,Ü,·B

PrintAgent'Í%žfvfšf" f^,É'Í,μ,ÄŽ©•ª,ìfhfLj...f"fg^ÈŠO,ìfhfLj...f"fg,ª'—
M,³,êžn,βAPSW,ðŽ©"®"I,ÉfAfcRf"ó'Ô,Å<N"®,μ,½,Æ,«,ÉAfvfšf" f^,ÅfGf%o["-
"Žž,ÉŽ©"®"I,ÉfEfBf"fhfE•\Žì,ÉØ,è'Ö,í,é,©,Ç,α,©,ð'ì'ð,Å,«,Ü,·B
n fGf%o[""Žž,ÉŽ©"®"I,ÉfEfBf"fhfE•\Žì,ÉØ,è'Ö,í,è,Ü,·B
n fGf%o["ª%ðœ,³,è,½ê±,ÍAŽ©"®"I,ÉfAfcRf"ó'Ô,É-β,è,Ü,·B

□mŽ©•ª,ìfhfLf...f□f“fg,ì^ó□ü't□n,ì,Æ,«

Ž©•ª,ìfhfLf...f□f“fg,ì^ó□ü't,É□AfGf%□□[,ª”□¶,μ,½,Æ,«,ÉŽ©“®“l,ÉfEfBf“fhfE□ó'Ô,Å<N“®,μ,Û,·□B

□mŽ©•ª,ìfhfLf...f□f“fg,ð^ó□ü,μ,Ä,ç,È,ç,Æ,«□n,ì,Æ,«

Ž©•ª,ìfhfLf...f□f“fg^ÈŠO,ìfhfLf...f□f“fg^ó□ü't,É□AfGf%□□[,ª”-

□¶,μ,½,Æ,«,ÉŽ©“®“l,ÉfEfBf“fhfE□ó'Ô,Å<N“®,μ,Û,·□B

n fGf%□□[,ª%□ð□œ,³,è,½□ê□‡,í□AŽ©“®“l,ÉfEfBf“fhfE,ð□l—¹,μ,Û,·□B

Ž©•ª, ìfhfLj...f[]“fg, ì^ó[]ù’t, É[]AfGf%[][,ª”[]¶, μ, ½, Æ, «, ÉŽ©“®“l, ÉfEfBf“fhfE[]ó’Ô, Å<N“®, μ, Ü, ·[]B
n fGf%[][,ª%ø[]œ,ª, è, ½[]ê[]‡, Í[]AŽ©“®“l, ÉfEfBf“fhfE, ø[]l—¹, μ, Ü, ·[]B

Ž © •ª, ìfhfLj...f[]“fg^ÈŠO, ìfhfLj...f[]“fg^óù’t, É[]AfGf%[][,ª”-

[]¶, μ, ½, Æ, «, ÉŽ © “ @ “ I, ÉfEfBf“fhfE[]ó’Ô, Å<N“ @, μ, Ü, ·[]B

n fGf%[][,ª%øð[]œ,³, è, ½[]ê[]‡, Í[]AŽ © “ @ “ I, ÉfEfBf“fhfE, ð[]I—¹, μ, Ü, ·[]B

n PSW, ì[]m’Ê’mCE`Ž @, ìfvf[]pfefB[]n, É[]m[]í, ÉfXfe[]f^fX, ðŽæ“¾[]n, ì[]Ý’è,ª, ,é<@Ží, Å, ìf`fFfbfN, ð, Å, ¯, Ä, -
,¾,³,ç[]B

mŽ©•ª,lfhLf...f“fg,ì^óü'tn,ì,Æ,«
PSW,ìŽ©“@<N“@,đs,ç,Û,¹,ňB
mŽ©•ª,lfhLf...f“fg,đ^óü,µ,Ä,ç,È,ç,Æ,«n,ì,Æ,«
PSW,ìŽ©“@<N“@,đs,ç,Û,¹,ňB

PSW,đ<N“@,·,é,Æ,«,íAPrintAgentfAfCfRf“,đ¶¶fNfŠfbfN,µ,ÄfvfŠf“f^,đ'l'đ,·,é,©AmfXf^[]fg[]nf[]ff...
[],©,çmfvf[]Of%of€n[]mfvfŠf“f^<@Ží-¼n,ì't,ìAmfvfŠf“f^fXfe[]f^fXfEfBf“fhfE[]n,đfNfŠfbfN,µ,Ä,-
,¾,³,çB

PSW, iž © " ® < N " ® , đ □ s , ç , Ü , 1 , ñ □ B

PSW, đ < N " ® , , é , Æ , « , í □ A PrintAgent f Af Cf R f " , đ □ f N f Š f b f N , μ , Ä f v f Š f " f ^ , đ ' l ' đ , , é , © □ A □ m f X f ^ □ [f g □ n f □ f j f ...

□ [, © , ç □ m f v f □ f O f % o f € □ n □ □ m f v f Š f " f ^ < @ Ž í - ¼ □ n , l ' t , l □ A □ m f v f Š f " f ^ f X f e □ [f ^ f X f E f B f " f h f E □ n , đ f N f Š f b f N , μ , Ä , - , ¾ , ¾ , ç □ B

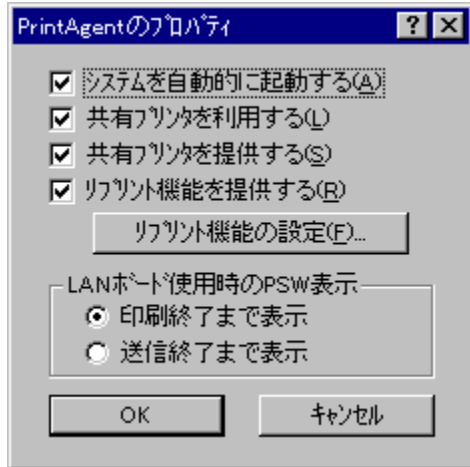
PSW, iž © " ® < N " ® , đ □ s , ç , Ü , 1 , ñ □ B

PSW, đ < N " ® , , é , Æ , « , í □ A PrintAgent f Af Cf R f " , đ □ f N f Š f b f N , μ , Ä f v f Š f " f ^ , đ ' l ' đ , , é , © □ A □ m f X f ^ □ [f g □ n f □ f j f ...

□ [, © , ç □ m f v f □ f O f % o f € □ n □ □ m f v f Š f " f ^ < @ Ž í - ¼ □ n , ì ' t , ì □ A □ m f v f Š f " f ^ f X f e □ [f ^ f X f E f B f " f h f E □ n , đ f N f Š f b f N , μ , Ä , - , ¾ , ¾ , ç □ B

PrintAgentのインストール

PrintAgentのインストールは、以下の手順で行います。
1. PrintAgentのインストールメディアを起動し、インストールプログラムを実行します。
2. インストールプログラムが起動すると、インストールオプションのダイアログが表示されます。



インストール

インストールは、以下の手順で行います。
1. インストールメディアを起動し、インストールプログラムを実行します。
2. インストールプログラムが起動すると、インストールオプションのダイアログが表示されます。
3. インストールオプションのダイアログで、必要なオプションを選択し、インストールを実行します。

インストールが完了すると、インストールされたファイルの場所を確認します。
インストールされたファイルの場所は、以下のとおりです。
インストールされたファイルの場所は、以下のとおりです。

ft□[fUf□fOfif“Žž,ÉPrintAgent,đŽ©“®“l,É<N“®,μ,Ü,·□B
n □Ý'è,μ,½“à—e,í□AŽŸ%oň,ìft□[fUf□fOfif“Žž,©,ç—LÆø,Æ,È,è,Ü,·□B
n ,±,ì□€-Ú,ì□Ý'è“à—e,ìft□[fU,²,Æ,É•Û'¶,³,é,Ü,·□B

fifbfjgff[fN<α—LfvfŠf“f^,Å□APSW,a—~—p,Å,«,é,æ,κ,É,È,è,Ü,·□B
n ,±,ì□€-Ú,ì□Ý'è“à—e,Íf+□[fU,²,Æ,É•Ú'¶,³,è,Ü,·□B

,²'□^Ó

n -{□€-Ú,³f^fFfbfN,³,è,Ä,ç,È,ç□ê□‡,Í□A|fifbfjgff[fN<α—LfvfŠf“f^,É'Í,μPSW,a,²—~—
p,É,È,è,Ü,¹,ñ□B,Ü,½□A,“Žg,ç,É,È,Ä,Ä,ç,éFRf“fsf...□[f^,ÉTCP/IPfvf□fgfRf<,³fCf“fXfg□[f<,³,è,Ä,ç
,È,ç□ê□‡,É,Í□A-{□€-Ú,Í,²—~—p,É,È,è,Ü,¹,ñ□B

Ž©•ª,ìfRf“fsf...[]f^,ÉÚ'±,³,ê,Ä,ç,éPrintAgent'î%žvfšf“f^,ðfìfbfgf[][]fN<α—Lfvfšf“f^,Æ,μ,Ä'¼,ìfRf“fsf...
[]f^,É'í,μ,Ä'ñ<ÿ,μ,Ä,ç,éêê±,ÉA,»,ê,ç,ì'¼,ìfRf“fsf...[]f^[]ã,ìPrintAgent,É'í,μ,ÄA<α—
Lfvfšf“f^,É'í,·,éî•ñ,Ö,ìfAfNfZfX,ð<-%oÂ,μ,Ü,·B

n ,±,ì€-Ú,ðf`fFfbfN,·,é,ÆA'¼,ìfRf“fsf...[]f^[]ã,ÅPSW,ª,²—~—p,É,È,ê,Ü,·B

n ,±,ì€-Ú,íA,±,ìfRf“fsf...[]f^,ì'Sft[]fU,É—LCEø,Å,·B,±,ì€-Ú,ð•ìX,Å,«,é,ì,ìfvfšf“f^,ìfAfNfZfXCE ,ÅAdm
inistratorsCE CEÀ,ðŽ,Åft[]fU,ì,Ý,Å,·B

,²'°^Ó

n -{[]€-Ú,ª`fFfbfN,³,ê,Ä,ç,éêê±[]Afìfbfgf[][]fN<α—Lfvfšf“f^,ð'ñ<ÿ,·,éfRf“fsf...
[]f^,ìWindows,ìf[]Ofìf“%œ-É•Ž!'+[]ft[]fU,ª[]fOfìf“,μ,Ä,ç,É,çSÖj,Å,àPrintAgent,ì<@“\
,·,é,½,ßA'¼,ìfRf“fsf...[]f^,©,ç,àfAfNfZfX,ª%oÂ“\,Å,·B

n ,“Žg,ç,É,È,Ä,Ä,ç,éRf“fsf...[]f^,ÉTCP/IPfvf[]fgfRf<,ªCf“fXfg[]f<,³,ê,Ä,ç,È,çêê±,É,íA-{[]€-Ú,í,²—~—
p,É,È,ê,Ü,¹,ñB

Ž©•ª,ìfRf“fsf...[]f^,ÉÚ±³,ê,Ä,ç,éPrintAgent‘í%žvfšf“f^,Åfšvfšf“fg<@“\,ðŽg—p,μ,Û,·□B
n ,±,ì□€-Ú,ì□Ý’è“à—e,í□A,±,ìfRf“fsf...[]f^,ì’Sft□[fU,É—LCEø,Å,·□B,±,ì□€-Ú,í□AAdministrators,ìCE CEÀ,ª, ,
éft□[fU,ì,Ý□Ý’è•ì□X%oÅ“\,Å,·□BCE CEÀ,ª,È,çft□[fU,Å,íOfCE□[É,È,èŽg—p,Å,«,,È,Ä,Ä,ç,Û,·□B

,²’□^Ó

n -{□€-Ú,ìŽ©•ª,ìfRf“fsf...[]f^,É¼□Ú□Ú±³,ê,Ä,ç,évfšf“f^,É’í,·,é□Ý’è,Å, ,è□Afbfšf□□[fN<α—
Lfvfšf“f^,É’í,·,é,à,ì,Å,í, ,è,Û,¹,ñ□B

n -{□€-Ú,ªf ffbfN,³,ê,Ä,ç,Ä,à□Afbfšf□□[fN<α—Lfvfšf“f^,Ö,ì^ó□ü,Å,íT□[fo,ì□Ý’è,ª—
LCEø,Æ,È,è,Û,·□Bfšvfšf“fg<@“\,ðfbfšf□□[fN<α—Lfvfšf“f^,ÅŽg—
p,μ,½,ç□é□‡,í□AfT□[fo□ã,ì□Ý’è,ð,²Sm“F,,¾,³,ç□B

n ,“Žg,ç,É,È,Ä,Ä,ç,évfšf“f^,É,æ,Ä,Ä,í□A-{□€-Ú,í,²—~—p,É,È,è,È,ç□é□‡,ª, ,è,Û,·□B,“Žg,ç,É,È,Ä,Ä,ç
,éRf“fsf...[]f^,É,±,ì□€-Ú,É’í%ž,μ,Ä,ç,évfšf“f^,ìPrintAgent,ªfCf“fXfg□[f<,³,ê,Ä,ç,é□é□‡,í’ð%oÅ“\
,É,È,è,Û,·,ª□A’í%ž,μ,Ä,ç,È,çvfšf“f^,É’í,μ,Ä,í□Ý’è,μ,½□€-Ú,í-³Ž<,³,è,Û,·□B□Ú,μ,-
,í□Afvfšf“f^,ìft□[fU□[fYf}ffj...fAf<,ð,²—,É,È,é,©□A,“Žg,ç,É,È,Ä,Ä,ç,évfšf“f^,ìPSW,ìfwf<fv,ð,²ŽQ□Æ,-
,¾,³,ç□B

fšvfšf“fg,ÉŠÖ,μ,ÄAfXfv□[f<ftf@fCf<,ì§CEÀ•û-@AfXfv□[f<ftf@fCf<,đŠi”[.,.éftfHf<f_,đ□Ý’è,μ,Û,·□B
n ,±,ì□€-Ú,ì□Ý’è“à—e,í□A,±,ìfRf“fsf...□[f^,ì’Sft□[fU,É—LCEø,Å,·□B,±,ì□€-Ú,ì□AAdministrators,ìCE CEÀ,a, ,
éft□[fU,ì,Ý□Ý’è•ì□X%oÅ“\,Å,·□B

,²’□^Ó

n ,“Žg,ç,É,È,Á,Ä,ç,évfšf“f^,É,æ,Á,Ä,í□A-{□€-Ú,í,²—~—p,É,È,è,È,ç□é□#,a, ,è,Û,·□B,“Žg,ç,É,È,Á,Ä,ç
,éRf“fsf...□[f^,É,±,ì□€-Ú,É’í%ož,μ,Ä,ç,évfšf“f^,ìPrintAgent,açf“fXfg□[f<,³,è,Ä,ç,é□é□#,í’í’đ%oÅ“\
,É,È,è,Û,·,ª□A’í%ož,μ,Ä,ç,È,çvfšf“f^,É’í,μ,Ä,í□Ý’è,μ,½□€-Ú,í-³Ž<,³,è,Û,·□B□Ú,μ,-
,ì□Afvšf“f^,ìft□[fU□[fYf}ff...fAç<,đ,²—,É,È,é,©□A,“Žg,ç,É,È,Á,Ä,ç,évfšf“f^,ìPSW,ìfwf<fv,đ,²ŽQ□Æ,-
,³/4,³,ç□B

LANf{[fh]iLANfAf_fvf^[]jŽg—pŽž,ìPSW,ì•\Žì,đ^óüü|—¹,Ü,Å•\Žì,É,·,é,©'—M|—¹,Ü,Å•\Žì,É,·,é,©,đŸ'è,μ,Ü,·B

n -{[€-Ú,íLANf{[fh'¼CE<,ìfvfŠf“f^,É'í,μ,Ä—LCEø,Å, ,è[]Aft[]foCEo—R,ÅLANf{[fhCEo—R,Å[]Ú'±³,è,½fvfŠf“f^,É'í,μ,Ä,í[]Aft[]fo[]ä,Å,ìŸ'è,^a—LCEø,Æ,É,è,Ü,·B

n ,“Žg,ç,É,È,Á,Ä,ç,éfvfŠf“f^,É,æ,Á,Ä,í[]A-{[€-Ú,í,²—~—p,É,È,è,È,ç[]è[]#,è,è,Ü,·B,“Žg,ç,É,È,Á,Ä,ç,éRf“fsf...[]f^,É,±,ì[]€-Ú,É'í%ž,μ,Ä,ç,éfvfŠf“f^,ìPrintAgent,èCf“fXfg[]f<,³,è,Á,ç,é[]è[]#,í'ð%Å“\,É,È,è,Ü,·,è[]A'í%ž,μ,Ä,ç,È,çfvfŠf“f^,É'í,μ,Ä,í[]Ÿ'è,μ,½[]€-Ú,í-³Ž<,³,è,Ü,·B[]Ú,μ,-,í[]AfvfŠf“f^,ìft[]fU[]fYf}ffj...fAf<,ð,²—,É,È,é,©[]A,“Žg,ç,É,È,Á,Ä,ç,éfvfŠf“f^,ìPSW,ìfwf<fv,ð,²ŽQ[]Æ,-³/₄,³,çB

LANf{[fh[iLANfAf_fvf^[]j,Æ,ì'É[]M,ð[]A^ó[]ü[]«"\\—D[]æ,Å[]s,ç,Û,·[]B, ,é[]l,ì^ó[]üfhfLf...
f[]f"fg"rŽt†,É'¼,ì[]l,ì^ó[]üfhfLf...f[]f"fg,ð'—[]M,Å,«,é,æ,æ,É,È,è[]A·i[]",ì^ó[]üfhfLf...
f[]f"fg,æ'¶[]Y,·,é,Æ,«,É[]A,·,×,Ä,ìfhfLf...f[]f"fg,ì^ó[]üš@—¹,æ'¬,,È,è,Û,·[]B

,²'[]^[]Ó

n ,±,ì[]Y'è,É,·,é,Æ[]APSW,Å,ì^ó[]ü'tfhfLf...f[]f"fg[]î·ñ,ì-¼[][]A[]Š—L[]AŠ@—¹fy[][]fW,í·\
Ži,³,è, ,[]A"rŽt†fAjjf[][]fVf#",à[]s,í,è,Û,¹,ñ[]B,Û,½[]m^ó[]ü[]Ü[]×[]nf_fCfAf[]Of{fbjNfX,ì[]m[]ó'Ô[]n,í,»,ìfhfLf
...f[]f"fg,æ^ó[]ü't,Ä, ,Ä,Ä,à[]u^ó[]ü'Ò[]v,Æ·\Ži,³,è,Û,·[]B
n ,Žg,ç,É,È,Ä,Ä,ç,éfvfŠf"f^,É,æ,Ä,Ä,í[]A-{[]€-Û,í,²~—p,É,È,è,È,ç[]è[]#,æ, ,è,Û,·[]B, Žg,ç,É,È,Ä,Ä,ç
,éfvfŠf...[]f^,É,±,ì[]€-Û,É'í%ž,µ,Ä,ç,éfvfŠf"f^,ìPrintAgent,æCf"fXfg[]f<,³,è,Ä,ç,é[]è[]#,í'ð%Å"\
,É,È,è,Û,·,æ[]A'í%ž,µ,Ä,ç,È,çfvfŠf"f^,É'í,µ,Ä,í[]Y'è,µ,½[]€-Û,í-³Ž<,³,è,Û,·[]B[]Ü,µ,-
,í[]AfvfŠf"f^,ìf[][]fU[]fYf}fj...fAf<,ð,²—,É,È,é,©[]A, Žg,ç,É,È,Ä,Ä,ç,éfvfŠf"f^,ìPSW,ìfwf<fv,ð,²ŽQ[]Æ,-
,¾,³,ç[]B

LANf{[fh]iLANfAf_fvf^[]j,Æ,ì'É[]M,ð[]AfXfe[]f^fXŽæ“¾—D[]æ,Å[]s,ç,Û,·[]BPSW,Å,ì•\
Ž,í[]Af[][]fjfvfšf“f^,âfjfbfgf[]fN<α—Lfvfšf“f^,ðŽg—p,μ,½[]ê[]#,Æ'S,“~,¶,É,È,è[]A^óü'tfhfLf...
f[]f“fg[]î•ñ,ì-¼[]ì[]A[]š—L[]Aš@—¹fy[]fW,²•\
Ž,³,è[]A“rŽtfAfj[]fVf#“,à[]s,í,è,Û,·[]B,Û,½[]m^óüüÚ×[]nf_fCfAf[]fOf{fbfNfX,ì[]m[]ó'Ô[]n,à[]³šm,É•\
Ž,³,è,Û,·[]B

,²'[]^Ó

n []m'—[]M[]—¹,Û,Å•\Ž,í[]n,æ,è[]A^óüü,ìš@—¹,²x,,É,é[]ê[]#,³, ,è,Û,·[]B
n ,“Žg,ç,É,È,Á,Ä,ç,éfvfšf“f^,É,æ,Á,Ä,í[]A—{[]€—Ú,Í,²~—p,É,È,è,È,ç[]ê[]#,³, ,è,Û,·[]B,“Žg,ç,É,È,Á,Ä,ç
,éRf“fsf...[]f^,É,±,ì[]€—Ú,É'í%ž,μ,Ä,ç,éfvfšf“f^,ìPrintAgent,³fCf“fXfg[]f<,³,è,Ä,ç,é[]ê[]#,í'í'ð%oÅ“\
,É,È,è,Û,·,²[]A'í%ž,μ,Ä,ç,È,çfvfšf“f^,É'í,μ,Ä,í[]Y'è,μ,½[]€—Ú,í-³Ž<,³,è,Û,·[]B[]Ú,μ,-
,í[]Afvfšf“f^,ìf[]fU[]fYf}fj...fAf<,ð,²—,É,È,é,©[]A,“Žg,ç,É,È,Á,Ä,ç,éfvfšf“f^,ìPSW,ìfwf<fv,ð,²ŽQ[]Æ,-
,¾,³,ç[]B

PrintAgent, ðl—¹

PrintAgentfAfCfRf“, ð%EfNfŠfbfN, µ, Ä•Žl, ³, ê, éfjjf... [l, ©, çmPrintAgent, ðl—¹n, ðfNfŠfbfN, ·, é, ±, Æ, ÅAPrintAgent, ðl—¹, ·, é, ±, Æ, Å, Å, «, Ü, ·B

ŽQÆ

PrintAgent, ðN“®

PrintAgent, ðN“®, µ, Ä, ç, È, çêç, ð@“\

PrintAgent, ÉŠÖ, ·, éNT, ðfT[fxfX, ðN“®A’âŽ~

fšfvfšf“fg<@”\,É,Â,ç,Ä

fšfvfšf“fg<@”\,íA,·,Â,É^óü,μ,½fhfLf...f“fg,ðfAfvfšfP[fVf†f“,ìÄ<N“@,ð,·,é,±,Æ,È,‘Ç
%oÁ^óü,μ,½,èA·“žw’è^óü,μ,½,è,·,éA^óü<@”\,ð’ñ<ÿ,μ,Û,·Bfšfvfšf“fg,ð—
LCEø,É,·,é,ÆA^óüfhfLf...f“fg,³fn[fhfffBfXfNã,É·Û‘¶,³,é,é,ì,ÁA%½“x,Á,àÄ^óü,Á,«,Û,·B

,±,ñ,È,Æ,«,É·Ö—~ ,É<@”\,Á,·B

n ·i“”“””,ð^óü,μ,½,ç
,Æ,«,É,P·”,³/4,~žž,μ^óü,ðs,çA^óüCE<%oÉ,ðŠm”F,μ,Ä,©,çžc,è,ì·””,ì^óü,ðs,æê#B
n ^é“x^óü,ðs,Á,ÄfAfvfšfP[fVf†f“,ðl—¹,μ,Ä,μ,Û,Á,½,³ACEã,Á’Ç%Á^óü,·,é·K—v,³o,Ä,«,½ê#B

,²’^ó

n ,”žg,ç,É,È,Á,Ä,ç,éfvfšf“f^,É,æ,Á,Ä,íAfvfšfšf“fg<@”\,²,²~—p,É,È,é,È,çê#³,³,è,Û,·BÚ,μ,-
,íAfvfšf“f^,ìf{fU[fYf}fj...fAfc,ð,²—,³/4,³,çB

šÖ~A€-Ú

[fšfvfšf“fg<@”\,ð’ñ<ÿ,·,é](#)

[fšfvfšf“fg<@”\,ìÿ’è](#)

fšfvfšf“fg<@”\,lžg,č,©,½

fšfvfšf“fg<@”\,l,²—~—p,í^É%º,ìžè□‡,Á□s,č,Û,·□B

,P□,S,ìžè□‡,đ, ,ç,©,¶,ß□s,Á,Ä,,¾,¾,ç□B1“x□Y’è,;ê,ì□AŽY%ºñ,©,ç,ìžè□‡,T^È□~ ,đ□s,±,±
,Æ,É,æ,è□Afšfvfšf“fg,đ,²—~—p,č,½,¾,¾,~,Û,·□B

fłbfğf□□[fN<α—lfvfšf“f^,É^ó□ü,·,é□è□‡,í□A,P□` ,S,ìžè□‡,đfT□[fofRf“fsf...□[f^□ã,Á□s,Á,Ä,,¾,¾,ç□B

1 PrintAgentfAfCfRf“ ,đ%ºEfnfšfbfN,μ,Ä•\Ž,¾,è,éf□fj...□[,©,ç□mPrintAgent,lfvf□fpfefB□n,đ’l’đ,μ,Û,·□B

2 □mfšfvfšf“fg<@”\,đ’ñ<Ÿ,·,é□n,đf`fFfbfN,μ,Û,·□B

3 □mfšfvfšf“fg<@”\,ì□Y’è□nf{f^f“ ,đfNfšfbfN,μ,Ä□mfšfvfšf“fg<@”\

,ì□Y’è□nf_fCfAf□Of{fbfNfX,đšJ,«□AŠe□€-

Ú,đ□Y’è,μ□A□mOK□nf{f^f“ ,đfNfšfbfN,μ,Û,·□B□i□mfXfv□[f<ftf@fCf<,đš’i[,·,éftfHf<f_],í^ó□üfhfLf...

f□“fg,đ•Ú¶,μ,Û,·,ì,Á□A<ó,«—e—É,é□•²,É, ,é,©,²Šm”F,ì□ã□Y’è,μ,Ä,,¾,¾,ç□B□j

4 □mPrintAgent,lfvf□fpfefB□nf_fCfAf□Of{fbfNfX,ì□mOK□nf{f^f“ ,đfNfšfbfN,μ,Û,·□B

5 fAfvfšfP□[fVf†“ ,Á^ó□üfhfLf...f□f“fg,đ□i□~ ,μ,Û,·□B

6 fAfvfšfP□[fVf†“□ã,lfvfšf“f^fhf%ºfCfo,lfvf□fpfefB,Á□mfšfvfšf“fg<@”\,đŽg—

p,·,é□n,đf`fFfbfN,μ□A^ó□ü,đ□s,č,Û,·□B

7 □mfXf^□[fg□nf□fj...□[,ì□mfvf□Of%ºf€□n□□mPrintAgent fšfvfšf“fg2□n,đfNfšfbfN,μ□APrintAgent
fšfvfšf“fg2,đ<N“ @ ,μ,Û,·□B

8 fšfvfšf“fg,đ□s,xfhfLf...f□f“fg-¼□A•”□”,È,Ç,đŽw’è,μ,Û,·□B

9 □mfXf^□[fg□nf{f^f“ ,đfNfšfbfN,·,é,Æfšfvfšf“fg,đšJžn,μ,Û,·□B

fqf“fg

n ,·,Á,Éfšfvfšf“fg,đ□s,xfhfLf...f□f“fg,ª—p^Ó,¾,è,Ä,č,é□è□‡,í□A,V^È□~ ,đŽÀ□s,μ,Ä,,¾,¾,ç□B

,²’□^Ó

n AdministratorsCE CEÀ,ª,È,çft□[fU,í□A□ã,ì,□□` ,R,ìžè□‡,í□s,ì,Û,¹,ñ□B□mfšfvfšf“fg<@”\
,đ’ñ<Ÿ,·,é□n,ªf`fFfbfN,¾,è,Ä,č,É,ç□è□‡,lfšfvfšf“fg<@”\,ª,²—~—p,É,È,è,Û,¹,ñ□BŠÇ—□ŽÒ,É,²’Š’k,,¾,¾,ç□B

n PSW,ì□mfhfLf...f□f“fg□nf□fj...□[,đfNfšfbfN,μ□A□mfšfvfšf“fg<@”\□n,đ’l’đ,·,é,±,Æ,Á□Afšfvfšf“fg<@”\,đ,²
—~—p,É,È,è,Û,·□B

ŠÖ~A□€-Ú

[PrintAgent,lfvf□fpfefB](#)

[fšfvfšf“fg<@”\,É,Ä,č,Ä](#)

[fšfvfšf“fg<@”\,ì□Y’è](#)

fvfŠf“f^fhf%ofCfofwf·fv

fvfŠf“f^ftfHf<f_ , © , ç , ² — ~ — p , É , È , è , ½ , † fvfŠf“f^ , ð ' l ' ð , μ □ Afhf%ofCfo , lfvf □ fpfefBfV □ [fg , ð Š J , ‹ □ A , » , ± , © , ç Ž Q □ Æ , μ , Ä , , ¾ , ¾ , † □ B

fšfvfšf“fg<@”\,ì□Ý’è

fšfvfšf“fg<@”\,ì□Ý’è,δ□s,ì,Ü,□B□mPrintAgent,ìfvf□fpfefB□n,©,ç□mfšfvfšf“fg<@”\
,ì□Ý’è□nf{f^f”,δfNfšfbfN,.,é,±,Æ,Åšj,,±,Æ,³,Å,«,Ü,□B
,²—,É,È,è,½,ç□€-Ü,δfNfšfbfN,μ,Ä,,¾,³,ç□B

リファソート機能の設定

スプールファイルの制限方法

- ドキュメント数(N) 10 個 (1 - 100)
- 有効期限(T) 240 時間 (1 - 720)
- ディスク領域(C) 10 MB (1 - 空き領域の 50%)

スプールファイルを格納するフォルダ

現在のフォルダ: C:\PrintAgent\Spool 空にする(E)

空き領域 882 MB 変更(F)...

OK キャンセル

fXfv[]f<ftj@fCf<,ì•Ù'¶,ð[]sCEÀ,·,é•ù-@,ð[]Ý'è,μ,Û,·[]B

n ^É%º,ì3,Â,ì[]€-Ú,Â[]A1,Â,Â,à[]ðCE[],É'B,·,é,ÆCEÃ,†^ó[]üfhfLf...f[]f“fg,©,ç[]#,É[]í[]œ,³,ê,Û,·[]B

, ±, ì € - Ú, ð f` fFfbfN, ., é, Æ AfSf v fSf "fg, ì, ½, ß, Éfn [fhfffBfXfN, É • Û' ¶, ³, ê, ½ ^ ó üfhfLf...
f "fg, ì", , æ f e f L f X f g f { f b f N f X, Å Y' è, ³, ê, ½ ' l, ð ' ' , ½, Æ, «, É C E Æ, ç ^ ó ü f f [f ^, ©, ç ¶ ð, É ¶ í ¶ œ, ³, ê, Û, · ¶ B
• Û' ¶, ., é ^ ó ü fhfLf... f "fg, ì", í 1 ¶ ` 100 C E Æ Å, Å, · ¶ B

f q f " f g

n , ±, ì € - Ú, ð f` fFfbfN, µ, Æ, ç, È, ç ¶ é ¶ ð ¶ A f h f L f... f "fg", í Å' å ¶ i 100 C E Æ Å ¶ j, É, È, è, Û, · ¶ B

, ±, ì € - Ú, ð f` fFfbfN, ., é, Æ AfSf v fSf` fg, ì, ½, ß, Éfn [fhfffBfXfN, É • Ú' ¶, ³, è, ½ ^ ó üfhfLf...
f` fg, ì • Ú' ¶ ŽžŠÔ, ¶ fefLfXfgf {fbfNfX, Å ¶ Ý' è, ³, è, ½ ŽžŠÔ, ð' ', ½, Æ, «, É, » , ì ^ ó üff [f ^, ð í œ, µ, Ü, · B
^ ó üfhfLf... f` fg, ì • Ú' ¶ ŽžŠÔ, í 1 ` 720 ŽžŠÔ, Å, · B

f q f` f g

n , ±, ì € - Ú, ð f` fFfbfN, µ, Ä, ç, È, ç é ê ÷ A — L C E ø Š ú C E À, í Å' å i 720 ŽžŠÔ j, É, È, è, Ü, · B

fXfv[]f<ftf@fCf<,đŠi"l,·,éftfHf<f_ìŸ'è,đ[]s,ç,Ü,·[]B

«»ŸŸ'è,³ê,Ä,ç,éfXfv[f<ftf@fCf<,ďŠi"[.,.éftfHf<f_Ä,·B

«»ŸŸ'è,³,ê,Ä,ç,éfXfv□[f<ftf@fCf<,ďŠi"[.,.éftfHf<f_,l<ó,«—e—Ê,Å,·□B

fšfvfšf“fg, ì, ½, ß, É•Ù’¶,³,ê,Ä,ç,éfXfv□[f<ftf@fCf<,ð,·,×,Ä□í□œ,μ,Ü,·□B

fqf“fg

n ,±,ìf{f^f“,Í□A ftfHf<f_ÉfXfv□[f<ftf@fCf<,²-³,ç□ê□‡,Í-³CEø,É,È,Á,Ä,ç,Ü,·□B

fXfv[]f<ftf@fCf<,đŠi”[.,.éftfHf<f_.,ì•ï[]X,đ[]s,ç,Ü,·[]B

,²’[]^Ó

n ‘í’đ,Å,«.,éftfHf<f_.,íĀĀ’èfffBfXfN,ì,Ý,Ā[]Aflfbfgf[][]fN,âfŠf€[][]fuf<fhf%ofCfu,í‘í’đ,Å,«.,Ü,¹,ñ[]B

fvfŠf“f^,ìfAfNfZfXŒ ,Æ,²—~—p,É,È,ê,éft□[fefBfŠfefB

,²Žg—p,É,È,Á,Ä,č,éfRf“fsf...□[f^,ìOS, fvfŠf“f^,ª¼□Ú,Â,È,ª,Á,Ä,č,éfRf“fsf...

□[f^,ìOS,âfvfŠf“f^,ìfAfNfZfXŒ ,É,æ,Á,Ä□AfvfŠf“f^fXfe□[f^fXfEfBf“fhfE□AfŠf.□[fgfpflf<,ì,.,x,Ä,ì<@“\,ð,²—
—p,É,È,ê,È,č□è□‡,ª, ,è,Ü,·□B

ŽQ□Æ

[fvfŠf“f^fXfe□\[f^fXfEfBf“fhfE,ìfZfLf...fŠfefB](#)

[fŠf.□\[fgfpflf<,ìfZfLf...fŠfefB](#)

□Ý'è,ð—LŒø,É,μ□Af_fCfAf□fOf{fbfNfX,ð•Â,¶,Ü,·□B

□Ý'è,ð-³Œø,É,μ□Af_fCfAf□fOf{fbfNfX,ð•Â,¶,Ü,·□B

PrintAgent,lfwf{fv,đ•Žl,μ,Ü,·□B

f^fXfe[]f^fXfEfBf“fhfE,ìfvf[]fpfefB,đ•\
Ž,μ,Ü,·[]BfvfŠf“f^fXfe[]f^fXfEfBf“fhfE,ìŽ©“®<N“®,ì[]Ý’è,²[]s,ì,Ü,·[]B

PrintAgent,lfvf[]pfefB,ð•\Ži,μ,Ü,·[]BPrintAgent,ìŽ©“®<N“®,ì[]Ý’è,â[]APrintAgent,Å,lfjfbfgf[][]fN<¤—
LfvfŠf“f^,ì—~—p[]A’ñ<Ÿ,ì[]Ý’è,“,æ,ÑfŠfvfŠf“fg,ì[]Ý’è,È,Ç,ª[]s,ì,Ü,·[]B

PrintAgent, ĩfo [fWfʒf“ □î•ñ,đ•\Žı,μ,Ü,·□B

PrintAgent, δ|⁻¹, μ, Ü, ·B

fšfXfg, ©, cfvfšf“f^fXfe□lf^fXfEfBj“fhfE, ìŸ'è'îŸ, Æ, È, éfvfšf“f^, ð'! 'ð, μ, Û, ·□B

f v f S f " f ^ f X f e [f ^ f X f E f B f " f h f E , ì ' î Ñ Ò , Æ , È , é f v f S f " f ^ , ð ' l ' ð , μ , Û , · Ñ B

fZfLf...fŠfefB

,²—,É,È,è,½,čfZfLf...fŠfefB,ìŽí—p,šfNfŠfbfN,μ,Ä,,¾,³,č□B

{button ,JI(`Pan4.HLP',`IDH_PA_HIGH_SECURITYPSW2') } PSW,lfZfLf...fŠfefB

{button ,JI(`Pan4.HLP',`IDH_PA_HIGH_SECURITYREPRINT') } fŠfvfŠf“fg,lfZfLf...fŠfefB

4.0j,Ü,½,ÍmftfjRf“fgf□□f□n,ìvfšf“f^,ìfNfZfXCE ,ðž□,Á,À,ç,Ä,é,Æ,«,í□A‘¼□l,ìhfLf...
f□“fg,ð□í□œ,Å,«,Ü,·□Bfvfšf“f^,ìfNfZfXCE ,³m^óü□n,ì□ê□±,í□í□œ,Å,«,Ü,¹,ñ□B

fšfvfšf“fg,lfZfLf...fšfefB

‡Afllbfjgffllfn<¤—Lfvfšf“f^,A^óü,ìèè‡

fvf%ofCfxllfgfXfvllf<ftf@fCf<,íAŽ©•ª,lfRf“fsf...
llf^,ìmPrintAgent,lfvllfpfefBlln,ÁŸ’è,ª,è,½èèšš,É•Ű’¶,ª,è,Ü,·BllmPrintAgent,lfvllfpfefBlln,ìmfšfvfšf“fg<@\,đ’ň<Ÿ,·,éllnllmfšfvfšf“fg<@\,ìŸ’èèlln,íAAdministrators,ìCE CEÀ,ª, ,éftllfU,ì,Ÿ•
ìX,Á,«,Ü,·B
PSW,ìmfšfvfšf“fg<@\llnf_fCfAflfo,Á,íAllmfhfLf...fll“fg,ìšÇ—
lln,Ü,½,ìmfllf<fRf“fgfllf<lln,lfvšf“f^,lfAfNfZfXCE ,đŽll,Á,Á,ç,éll,ì,·,x,Á,lfllfU,lfhfLf...
fll“fg,ªfšfXfgfAfbfv,ª,è,Ü,·B,ª,è,ÉŠO,ìCE CEÀ,lfllfU,ìŽ©•ª,lfhfLf...
fll“fg,ì,Ÿ,ªfšfXfgfAfbfv,ª,è,íAllmšš—LŽÒlln—“,ì•Ž!ª,è,Ü,¹,ňllB

‡Afllbfjgffllfn<¤—Lfvfšf“f^,A^óü,ìèè‡

fvf%ofCfxllfgfXfvllf<ftf@fCf<,íTllfofRf“fsf...
llf^,ìmPrintAgent,lfvllfpfefBlln,ÁŸ’è,ª,è,½èèšš,É•Ű’¶,ª,è,Ü,·Bšfvfšf“fg,ìŸ’è,íAftllfofRf“fsf...
f...llf^,ìmPrintAgent,lfvllfpfefBlln,ìmfšfvfšf“fg<@\,đ’ň<Ÿ,·,éllnllmfšfvfšf“fg<@\,ìŸ’èèlln,ª”½of,ª,è,Ü,·BfNf%ofCfAfl“fgfRf“fsf...
llf^,ìmPrintAgent,lfvllfpfefBlln,ìmfšfvfšf“fg<@\,đ’ň<Ÿ,·,éllnllmfšfvfšf“fg<@\,ìŸ’èèlln,É,ì%œ<¿,µ,Ü,¹,ňBftllfofRf“fsf...llf^,ìmPrintAgent,lfvllfpfefBlln,ìmfšfvfšf“fg<@\,đ’ň<Ÿ,·,éllnllmfšfvfšf“fg<@\,ìŸ’èèllnf{f^f“,íAÉ%ª,ì,æ,ª,ÉftllfofRf“fsf...
llf^,ìOS,É,æ,Á,ÁACE CEÀ,ª,È,çftllfU,ìŸ’è,đ•ìX,Á,«,È,çèè‡,ª, ,è,Ü,·B

llmfTllfofRf“fsf...llf^,ìOS,ªWindows 98/95,ìèè‡lln

ftllfofRf“fsf...llf^llä,ìmPrintAgent,lfvllfpfefBlln,ìmfšfvfšf“fg<@\,đ’ň<Ÿ,·,éllnllmfšfvfšf“fg<@\,ìŸ’èèlln,íAftllfofRf“fsf...llf^llä,Á,·,x,Á,lfllfU,ª•ìX,Á,«,Ü,·B

llmfTllfofRf“fsf...llf^,ìOS,ªWindows NT,ìèè‡lln

ftllfofRf“fsf...llf^llä,ìmPrintAgent,lfvllfpfefBllnllmfšfvfšf“fg<@\,đ’ň<Ÿ,·,éllnllmfšfvfšf“fg<@\,ìŸ’èèllnf{f^f“,íAftllfofRf“fsf...llf^llä,ÁAdministrators,ìCE CEÀ,ª, ,éftllfU,ì,Ÿ•ìX,Á,«,Ü,·BCE CEÀ,ì,È,çftllfU,íAfofCEll•\Ž!É,È,è,Ü,·B

,²“^Ó

n ftllfofRf“fsf...llf^,ìOS,ªCE CEÀ,ÉŠÖ,ìç,·llfllbfjgffllfn<¤—Lfvfšf“f^,É^óü,ìèè‡llfAfNf%ofCfAfl“fgfRf“fsf...llf^,ìPSW,ìmfšfvfšf“fg<@\llnf_fCfAflfo,Á,íAŽ©•ª,lfhfLf...
fll“fg,ì,ŸfšfXfgfAfbfv,ª,è,Ü,·B

n ,“Žg,ç,É,È,Á,Á,ç,éfvšf“f^,É,æ,Á,Á,íAšfvfšf“fg<@\,ª,²—~—p,É,È,è,È,çèè‡,ª, ,è,Ü,·BllU,µ,-
,íAšfvfšf“f^,lfllfUllfYf}ffj...fAç,đ,²—,ª,³,çllB

^óüfjfo—í<@”\,É,Â,ç,Ä

^óüfjfo—í<@”\,Æ,íAflfbfgf[]fNŠÄ«»,Å•;í”fNf%ofCfAf“fg,©,ç^óü,ðs,æŠÄ««,É,“,ç
,ÄAfvfŠf“f^,²,Æ,Éft[]fU-¼A^óüfhfLf...f[]f“fg-¼A^óüfhfLf...f[]f“fg,²,Æ,í^óü-
‡”A^óüžž“™,í^óüfjfo,ðNTfT[]foã,ìfn[]fhffBfXfN,É<L%~“,·,é<@”\,Å,·B

n -{<@”\,íT[]frfX,Å’ñ<ÿ,³,éAPrintAgentfCf“fXfg[]f’¼Æã,íAft[]frfX,â’âž~,³,é,Ä,ç,Ü,·B- {<@”\,ð,²~—
p,É,É,ééè‡,íA[]mfRf“fgf[]f<fpf[]f<n[]mft[]frfX[]n,©,çA“NEC Printing Information
Logger”,ðŠJŽn,μ,Ä,,¾,¾,çB

n []mPrintAgent,ìvf[]pfefB[]n[]mLANf{[]fhŽg—pŽž,ìPSW,ì•Ž![]n,â[]m’—[]M[]—¹,Ü,Å•Ž![]n,Æ,È,Ä,Ä,ç
,ééè‡A^óüfjfo,í[]—,³,é,Ü,¹,ñB^óüfjfo,ð[]—,·,ééè‡,í[]m^óü[]—¹,Ü,Å•Ž![]n,É•íX,μ,Ä,-
,¾,¾,çB

n

f[]Of[]fCf<,íPrintAgent,ðfCf“fXfg[]f<,μ,½ftfHf<_,”Log“fTfuf[]fHf<_,”ÉCSVCE`Ž®,Å[]—,³,é,Ü,·Bftf@fCf
<-¼,í”[]fvfŠf“f^—¼[]j.log”,ì,æ,æ,É,È,è,Ü,·B

fqf“fg

n fT[]frfX,ìŠJŽn,íAAdministrators,ìCE CEÀ,²,É,ç,ÆŽÀ[]s,Å,«,Ü,¹,ñB

,²^ó

n ,”Žg,ç,É,È,Ä,Ä,ç,éfvfŠf“f^,É,æ,Ä,Ä,íA- {<@”\,ð,²~—p,É,È,é,È,çéè‡,â, ,è,Ü,·B[]mfRf“fgf[]f<fpf[]f<n
[]mft[]frfX[]n,É“NEC Printing Information Logger”,â“o~^(*1),³,é,Ä,ç,é,©,ç,æ,©,ð,²Šm“F,,¾,¾,çB

*1fvfŠf“f^,É,æ,Ä,Ä,í“o~^,³,é,Ä,ç,Ä,àžg—p,Å,«,Ü,¹,ñB•;í”,ìPrintAgent’í%žfvfŠf“f^,âfCf“fXfg[]f<,³,é,Ä,ç
,ééè‡,íA- {<@”\,ðTf[]fg,·,éfvfŠf“f^,â1,Å,Å,à, ,é,îã<Lft[]frfX,â“o~^,³,é,Ü,·B

'á'¬%ñü,â[]—Ê%Û<à%ñü,Á,ìŽg—p

'á'¬%ñü,ð,²Žg—p,ìé#

'á'¬%ñü,ðCe—R,·,élfbfjgf[]fN<—Lvfšf“f^,É,Á,ç,ÄPrintAgent,ðŽg—
p,·,é,ÆA'ÉM'¬“x,ìSÖCEW,ÄPSW,É,Ç,ì€[]²,μ,É,,ç[]é#²,²,è,Û,·B,±,ìé#²,ì[]A'fjbfjgf[]fN<—
Lvfšf“f^,É,Á,ç,Ä,ìPrintAgent,ì'o•ûCEü'ÉM<@“\,ð'âŽ~,,μ,Ä,,¾,¾,ç[]B

fjbfjgf[]fN<—Lvfšf“f^,É,Á,ç,Ä,ìPrintAgent,ì'o•ûCEü'ÉM<@“\,ð'âŽ~,·,é[]é#²,ì[]A%°<L,ìŽè#²,ð[]s,Á,Ä,-
¾,¾,ç[]B

,P fNf%ofCfAf“fgfRf“fsf...[]f^'²,Ä[]mPrintAgent,ìfvf[]pfefB[]n,ì[]m<—Lvfšf“f^,ð—~
p,·,é[]n,ìf`fFbfN,ð,ì,,μ,Û,·B

,Q fT[]fofRf“fsf...[]f^'²,Ä[]mPrintAgent,ìfvf[]pfefB[]n,ì[]m<—
Lvfšf“f^,ð'ñ<ÿ,·,é[]n,ìf`fFbfN,ð,ì,,μ,Û,·B[]i*1[]j

,Û,½[]AfT[]fofRf“fsf...[]f^,ìfvšf“f^,ì^ó[]ü[]æ,²NEC TCP/IP Port[]iWindows 98/95,Ä,ìNEC TCP/IP Printing
System[]AWindows NT,Ä,ìNEC Network Port[]j,ì[]é#²[]A'á'¬%ñü,ðCe—R,μ,ÄPrintAgent,ðŽg—
p,·,é,ÆA“¬—ì,É'ÉM'¬“x,ìSÖCEW,ÄPSW,É,Ç,ì€[]²,μ,É,,ç,±,Æ,²,è,Û,·B,±,ìé#²,ì[]A'o•ûCEü'ÉM<@“\
,ðŽg—p,μ,É,ç,æ,²,É,μ,Ä,,¾,¾,ç[]B

'o•ûCEü'ÉM<@“\,ðŽg—p,μ,É,ç,æ,²,É,·,é[]é#²,ì[]A%°<L,ì[]m'o•ûCEü'ÉM<@“\,ðŽg—p,μ,É,ç,æ,²,
,É,·,é[]é#²,ìŽè#²[]n,ð[]s,Á,Ä,,¾,¾,ç[]B

[]—Ê%Û<à%ñü,ð,²Žg—p,ìé#

“]—ff[]f^—Ê,Û,½,ì[]Ü'±ŽžSÖ,É%ž,²,Ä%Û<à,³,é,é[]—Ê%Û<à[]\$,ìfjbfjgf[]fN,ðCe—
R,μ,ÄPrintAgent,ðŽg—p,μ,Ä,ç,é[]é#²,É,à[]APrintAgent,ì'o•ûCEü'ÉM,É,æ,Á,Äff[]f^“]—,²”[]²,μ[]A
%Û<à,³,é,é,±,Æ,²,è,Û,·B

- []—²,·,x,«fjbfjgf[]fNšÄ««,ì—á,Æ,μ,Ä,ì^Ê%°,ì,æ,²,ÉfP[]fX,²,è,Û,·B
- n fjbfjgf[]fNfvšf“f^,²[]ACEó[]O%ñü,ðCe—R,μ,½•É,ìfjbfjgf[]fN[]ä,É'²[]ÿ,·,é[]é#²[]B
- n fvšf“fgfRf[]fo[]ADNSfT[]fo[]AWINSfT[]fo,²[]ö[]O%ñü,ðCe—
R,μ,½•É,ìfjbfjgf[]fN[]ä,É'²[]ÿ,·,é[]é#²[]B
- n f[][]fj<fjbfjgf[]fN,ì'É[]MŽ©'ì,²%Û<àfjbfjgf[]fN,ìé#²[]B

[]—Ê%Û<à%ñü,Ä,ì%Û<à,ð[]Ä[]¬CEÀ[]^ó[]üžž,ì,ÿ[]j,Æ,·,é,½,ß,É,ì%°<L,ìŽè#²,ð[]s,Á,Ä,,¾,¾,ç[]B

,P fNf%ofCfAf“fgfRf“fsf...[]f^'²,Ä[]uPrintAgent,ìfvf[]pfefB[]v,ì[]u<—Lvfšf“f^,ð—~
p,·,é[]v,ìf`fFbfN,ð,ì,,μ,Û,·B

,Q fT[]fofRf“fsf...[]f^'²,Ä[]uPrintAgent,ìfvf[]pfefB[]v,ì[]u<—
Lvfšf“f^,ð'ñ<ÿ,·,é[]v,ìf`fFbfN,ð,ì,,μ,Û,·B[]i*1[]j

,R fT[]fofRf“fsf...[]f^,ìfvšf“f^,ì^ó[]ü[]æ,²NEC TCP/IP Port(Windows 98/95,Ä,ìNEC TCP/IP Printing
System[]AWindows NT,Ä,ìNEC Network Port),ì[]é#²[]A'o•ûCEü'ÉM<@“\,ðŽg—p,μ,É,ç,æ,²,É,μ,Ä,-
¾,¾,ç[]B[]i*1[]j

{button ,J(\ PAN4.HLP>step',`IDH_PA_HIGH_STOPBIDI95')} 'o•ûCEü'ÉM<@“\,ðŽg—p,μ,É,ç,æ,²,É,·,é

,²'°Ó

*1fRf“fsf...[]f^,ìOS,²Windows
NT,Ä[]ÿ'è,ì•ìX,ð,·,é[]é#²[]AAdministrators,ìCE CEÀ,²,éft[]fU,ì,ÿ'ì[]X,Ä,«.,Û,·B

ŠÖ~A€-Ú

[PrintAgent,lfvfpfefB](#)

'o•ûĈü'Ê□M<@"\,ðŽg—p,μ,È,ç□ê□‡

f□□[fjf<fvfŠf“f^,Æ,ì'o•ûĈü'Ê□M,ð'âŽ~,.,é□ê□‡,â PrintAgent,ì<@"\,ðŽg—
p,μ,È,ç□ê□‡,í□A,»,ê,¼,ê,ìŽè□‡,É,æ,è□A□Ý'è,ð•ï□X,μ,Ä,,¾,¾,ç□B

flfbfgf□□[fN<κ—LfvfŠf“f^,ð,²Žg—p,É,È,Á,Ä,ç,é□ê□‡,Å□A□Nf%ofCfAf“fgfRf“fsf...□[f^,ìPrintAgent,ì<@"\,ðŽg—
—p,μ,È,ç,Æ,«,í□A□uPrintAgent,ì'S<@"\,ð^êŽŽ“l,É'âŽ~,¾,¾,é□v,ì4□`7,ì□Ý'è,ð□s,Á,Ä,,¾,¾,ç□B

{button ,JI(` PAN4.HLP>step', `IDH_PA_HIGH_STOPBIDI95')} 'o•ûĈü'Ê□M<@"\,ðŽg—p,μ,È,ç,æ,κ,É,.,é
{button ,JI(` PAN4.HLP>step', `IDH_PA_HIGH_STOPPA95')} PrintAgent,ì'S<@"\,ð^êŽŽ“l,É'âŽ~,¾,¾,é

,²'□^Ó

n flfbfgf□□[fN<κ—LfvfŠf“f^,ð,²Žg—p,ì□ê□‡,Å□A,“Žg,ç,É,È,Á,Ä,ç,é□Nf%ofCfAf“fgfRf“fsf...□[f^,¾,¾,Ä,È,-
flfbfgf□□[fN'S'ì,ÅPrintAgent,ì<@"\,ð~—p,μ,È,ç,Æ,«,í□A□f□□[fofRf“fsf...□[f^,Å,à□ă<L,ì□Ý'è,ð□s,κ•K—v,¾,
,è,Ü,·□B□f□□[fo,ìOS,É,æ,è□Ý'è“à—e,¾^Ü,È,è,Ü,.,ì,Å□A□Ü,μ,,í□f□□[fo,ì□uPrintAgentfwf<fv□v,ì—{□€-
Ü,ðŽQ□Æ,μ,Ä,,¾,¾,ç□B

'o•ûŒü'Ê□M<@"\,ðŽg—p,μ,È,ç,æ,π,É,·,é

fvfŠf“f^,Æ,ì'o•ûŒü'Ê□M<@"\,ðŽg—p,μ,È,ç□ê□‡,ìŽè□‡,ð□à-¾,μ,Û,·□B'o•ûŒü'Ê□M<@"\,ðŽg—
p,μ,È,ç□Ý'è,É,·,éOS,ð'I'ð,μ,Ä,,¾,¾,ç□B

Windows 98/95



Windows NT 3.51

Windows 98/95, Á'ó•ûĈÛ'ÊĎM<@"\,đŽg—p,μ,È,ċ,æ,ꝛ,É,·,éŽèċ

n fvfŠf“f^,Æ,ì'ó•ûĈÛ'ÊĎM,đŽg—p,μ,È,ċĎĎ,í^È%oo,ì,æ,ꝛ,É,μ,Ä,,¾,¾,ċĎB

,P Windows,ìmfXf^Ď[fgĎnfĎfj...Ď[.©,ċĎAĎmĎÝ'èĎnĎ|ĎmfvfŠf“f^Ďn,đfNfŠfċfN,μ,Û,·ĎB

,Q •\Ž!,¾,è,½fvfŠf“f^ftfHf<f_ì't,©,ċŠY“—,·,éfvfŠf“f^,đ'ì'đ,μĎAfvĎfj...Ď[.ìĎmftf@fCf<ĎnĎ|

ĎmfvfĎfpfefBĎn,đŠJ,«,Û,·ĎB

,R ĎmĎÚĎ×Ďnf^fu,ì't,ìmfXfvĎ[f<,ìĎÝ'èĎn,đfNfŠfċfN,μ,Û,·ĎB

,S Ďm,±,ìfvfŠf“f^,ì'ó•ûĈÛ'ÊĎM<@"\,đfTf|Ď[fg,μ,È,ċĎn,đ'ì'đ,μĎAĎmOKĎn,đfNfŠfċfN,μ,Û,·ĎB

,T ĎmOKĎn,đfNfŠfċfN,μĎAfvĎfpfefBfVĎ[fg,đ•Ä,¶,Û,·ĎB

,U ,“Žg,ċ,ìfRf“fsf...Ď[f^,đĎÄ<N“®,μ,Ä,,¾,¾,ċĎB

,²'Ď^Ó

n fRf“fsf...Ď[f^,ìĎÄ<N“®,²Ďs,í,è,È,ċ

,ÆĎA,»),ĎĎãĎÄ,Ñ'ó•ûĈÛ'ÊĎM,đĎs,ꝛĎÝ'è,É,μ,Ä,à'ó•ûĈÛ'ÊĎM,²Ď³Ďí,ÉĎs,í,è,È,ċĎĎĎ,², ,è,Û,·Ďi,»),ìĎĎĎ,ìĎ

APSW,ì•\Ž!,à•sĎ³,É,È,é,±,Æ,², ,è,Û,·ĎjĎB^è'UĎu'ó•ûĈÛ'ÊĎM<@"\,đŽg—

p,μ,È,ċĎv,ìĎÝ'è,É•ĎX,μ,½ĎĎĎ,íĎA•K, ,“Žg,ċ,ìfRf“fsf...Ď[f^,đĎÄ<N“®,μ,Ä,,¾,¾,ċĎB

Windows NT 4.0, Å' o • ũ Œ ü' Ê M < @ " \, đ Ž g — p, μ, È, †, æ, x, É, ·, é Ž è †

n fvfŠf“f^, Æ, ì' o • ũ Œ ü' Ê M, đ Ž g — p, μ, È, † Ê †, í^ È % °, ì, æ, x, É, μ, Ä, , ¾, ¾, † B

, P mfXf^ [fg n f f f ... [, ©, † A m Ÿ' è n | mfvfŠf“f^ n, đ f N f Š f b f N, μ, ũ, · B

, Q • Ž, ¾, è, ½ fvfŠf“f^, ì †, ©, † Ÿ “ —, ·, é fvfŠf“f^, đ ' ì, μ A f f f f ... [, ì m f t f @ f C f < n |
mfvf [f p f e f B n, đ Š, †, ũ, · B

, R mf | [fg n | m' o • ũ Œ ü f T f [fg, đ — L Œ ø, É, ·, é n, ì f` f f b f N, đ, í, , μ A O K, đ f N f Š f b f N, μ, ũ, · B

, ² ^ Ó

n Ÿ' è, ì • ì X, đ, ·, é Ê † † A f t f < f R f “ f g f [f < , ì Œ Œ Ä, à , é f † [f U, ì, Ÿ • ì X, Ä, †, ũ, · B

Windows NT 3.51, Ā'ō•ūĈEü'Ē□M<@”\,đŽg—p,μ,Ē,ϕ,æ,κ,Ē,·,éŽè□‡

n fvfŠf“f^,əf□□[fj]f<□Ú'±,³,Ē,Ā,ϕ,é□é□‡,Í'Ē%°ē,ì,æ,κ,Ē,μ,Ā,,³/₄,³,ϕ□B

,P □mfvf□fOf%of€f}f□[fWff□n,©,ç□mfvfŠf“fgf}f□[fWff□n,đf_fuf<fNfŠfbfN,μ,Ü,·□B

,Q •\Ž!,³,Ē,½fvfŠf“f^,ì†,©,çŠY“-·,·,éfvfŠf“f^,đ'Í'đ,μ□A□f□fj...
□[.ì□mfvfŠf“f^□n,©,ç□mfvfŠf“f^□í•ñ□n,đŠJ,«,Ü,·□B

,R □m^ó□ü□æ□n,đLPT1□iLPT2, LPT3□j,É□Ý'è,μ,Ü,·□B

n fvfŠf“f^,əf|fbfgf□□[fN□Ú'±,³,Ē,Ā,ϕ,é□é□‡,ÍNEC TCP/IP Port(NEC Network Port),ì'ă,í,è,ÉLPR
Port□iTCP/IPf|fbfgf□□[fN^ó□üfTf]□[fg□j,đŽg—p,μ,Ā,,³/₄,³,ϕ□BWindows NT 3.51,Ē,·,ϕ
,ĀfvfŠf“f^,ì'ó□ü□æ,đLPR Port,Ē,·,é□é□‡,Í'Ē%°ē,ì,æ,κ,Ē,μ,Ā,,³/₄,³,ϕ□B

,P □mfvf□fOf%of€f}f□[fWff□n□□□mf□fCf“□n□□
□mfRf“fgf□□[f<fpf|f<□n,ì□mf|fbfgf□□[fN□n,đf_fuf<fNfŠfbfN,μ,Ü,·□B

,Q □mf|fbfgf□□[fN□Ý'è□nf_fCfA□f□O,ì□mf|ftfgfE□f□A,ì'Ç%°Á□nf{f^f“,đfNfŠfbfN,μ,Ü,·□B

,R □mf|fbfgf□□[fN|ftfgfE□f□A,ì'Ç%°Á□nf_fCfA□f□O,Ā□mTCP/IPfvf□fgfRf<,·,æ,ÑŠÖ~A□Rf“f|
□[f|f“fg□n,đ'Í'đ,μ□m'±□s□nf{f^f“,đfNfŠfbfN,μ,Ü,·□B

,S □mWindows NT
TCP/IP'g,Ý□ž,Ýf|fvfVf#“□nf_fCfA□f□O,ì□mfRf“f□[f|f“fg□n,Ā□mTCP/IPf|fbfgf□□[fN^ó□üfTf|
□[fg□n,đf`f□fbfN,μ□A□m'±□s□nf{f^f“,đfNfŠfbfN,μ,Ā,,³/₄,³,ϕ□B,»,ìCEă,ÍŽwŽ!,É,μ,½,ª,Ā,Ā□mTCP/
IPf|fbfgf□□[fN^ó□üfTf]□[fg□n,đ'g,Ý□ž,ñ,Ā,,³/₄,³,ϕ□B

,T □mfvf□fOf%of€f}f□[fWff□n□□□mf□fCf“□n□□□mfvfŠf“fgf}f□[fWff□n,đf_fuf<fNfŠfbfN,μ,Ü,·□B

,U □mfvfŠf“fgf}f□[fWff□n,Ā^ó□ü□æ,đ•İ□X,·,éfvfŠf“f^,đ'Í'đ,μ,½□ó'Ô,Ā□A□f□fj...□[.©,ç□mfvfŠf“f^□n□□
□mfvfŠf“f^□í•ñ□n,đ'Í'đ,μ,Ü,·□B

,V □m^ó□ü□æ□n,Ā□m,»,'¼...□n,đ'Í'đ,μ□A□m^ó□ü□æ□nf_fCfA□f□O,ì□m—~—p%°Ā“\
,Ē^ó□üf,fj□f□n,Ā□mLPR Port□n,đ'Í'đ,μ□mOK□nf{f^f“,đfNfŠfbfN,μ,Ü,·□B

,W □mLPRCEÝŠ·fvfŠf“f^,ì'Ç%°Á□nf_fCfA□f□O,ì□m|pd,đ'ñ<Ÿ,μ,Ā,ϕ,ézfXfg,ì-
¼'°O,Ü,½,ÍfAfhfCEfX□n,ÉfvfŠf“f^,É□Ú'±,³,Ē,Ā,ϕ,é,k,` ,mf{□[fh□^fA□f_vf^,ìIPfAfhfCEfX,đ“ü—
Í,μ□A□mOK□nf{f^f“,đfNfŠfbfN,μ,Ü,·□B

,X □mfvfŠf“f^□í•ñ□nf_fCfA□f□O,ì□mOK□nf{f^f“,đfNfŠfbfN,μf_fCfA□f□O,đ•Ā,¶,Ü,·□B

,²'□^Ó

n □Ý'è,ì•İ□X,đ,·,é□é□‡□Administrators,ìCE CEÀ,ª, ,éft□[fU,ì,Ý•İ□X,Ā,«,Ü,·□B

PrintAgent,ì'S<@"\,ð^êŽž"l,É'âŽ~,³,¹,é

PrintAgent,ì'S<@"\,ð^êŽž"l,É'âŽ~,·,éêê‡,í^È%º,ì,æ,α,É,μ,Ä,,¾,³,¶B

- 1 □mfXf^□[fg□nf□fj...□[.©,ç□A□m□Y'è□n□|□mfvfŠf"f^□n,ðfNfŠfbfN,μ,Ü,·□B
- 2 •\Žl,³,ê,½fvfŠf"f^,ì't,©,ç- {fvfŠf"f^,ð'l'ð,μ□A□f□fj...□[.l□mftf@fCf<□n□|□mfvf□pfefB□n,ðŠJ,«,Ü,·□B
- 3 □mf|□[fg□n□|□m'o•ûCEüfTf|□[fg,ð—LCEø,É,·,é□n,lf`fFfbfN,ð,í,,μ□AOK,ðfNfŠfbfN,μ,Ü,·□B
- 4 □mPrintAgent,lfvf□pfefB□n,ðŠJ,«,Ü,·□B
- 5 □mfVfXfef€,ðŽ©"®"l,É<N"®,·,é□n□A□m<α—LfvfŠf"f^,ð—~—p,·,é□n□A□m<α—
LfvfŠf"f^,ð'ñ<Ÿ,·,é□n,lf`fFfbfN,ð,í,,μ,½, ,Æ□A□mOK□n,ðfNfŠfbfN,μf_fCfA□f□Of{fbfNfX,ð•Â,¶,Ü,·□B
- 6 PrintAgent,ð□l—¹,μ,Ü,·□B
- 7 fT□[frfX,ð'âŽ~,μ,Ü,·□B

ŽQ□Æ

[PrintAgent,ÉŠÖ,·,é,m,s,lfT□\[frfX,ì<N"®□A'âŽ~](#)

PrintAgent,Á,ìf|[]fjg,ìY'è

n Windows NT 4.0,ìfvfŠf“f^fv[]f<,ìfTf|[]fjg,μ,Ä,ç
,Ü,¹,ñ[]Bf[][]fjfvfŠf“f^,ìé[]#,â[]AfvfŠf“f^,â^{1/4}Ü,Ä,È,^a,Á,Ä,ç,éfRf“fsf...[]f^,ìOS,^aWindows NT
4.0,ìé[]#[]AWindows NT 4.0[]ä,ì,·,×,Ä,ìfvfŠf“f^,Ä[]mfvf[]fpfefB[]n[][]mf|[]fjg[]n[][]mfvfŠf“f^fv[]f<,ð—
LCEø,É,·,é[]n,ìf`fFfbfN,ð,í,·,μ,Ä,²Žg—p,,^{3/4},³,ç[]B[]mfvfŠf“f^fv[]f<,ð—
LCEø,É,·,é[]n,ðf`fFfbfN,μ,^{1/2}é[]#[]AfvfŠf“f^,ìó‘Ô,^aμ,·\Ž!,³,é,Ü,¹,ñ[]BÜ,μ,,ìfvfŠf“f^,ìfwf<fv,ð,²—,-
,^{3/4},³,ç[]B

ŠÖ~AŽ-[]€

'o•ûCEü'Ê[]M<@"\,ðŽg—p,μ,È,ç[]é[]#

PrintAgent,ÉŠÖ,·,éNT,ìFT[]fxfX,ì·N"®[]A'âŽ~

PrintAgent,Â,í[]A

- n NEC Remote Maintenance Manager
- n NEC Network Printer Status Server
- n NEC Printer Status Database
- n NEC Printer Status Watcher
- n NEC Printing Information Logger
- n NEC Private Spool System

,ìFT[]fxfX,a, ,è,Û,·[]B

,²'[]^Ó

n ,·Žg,ç,É,È,Á,Ä,ç,éfVfŠf"f^,É,æ,Á,Ä,í[]A"o~^,³,è,Ä,ç,éFT[]fxfX,í^Û,È,è,Û,·[]B

NEC Remote Maintenance Manager,É,Â,ç,Ä

NEC e-mailf[]f"fejif"fX,ð,²~—p,É,È,é,½,ß,É·K—v,ÉfT[]fxfX,Â,·[]BNEC e-mailf[]f"fejif"fX,ð,²~—p,É,È,é[]è[]#,í[]mfRf"f[]gf[]f[]f[]p[]f[]f[]<[]n[]í[]mfT[]fxfX[]n,ì[]mfXf^[]f[]gf[]f[]bfv[]n[]í[]mfXf^[]f[]gf[]f[]bfv,ìŽí—p[]n,ð[]mŽ©"®[]n,É,µ,ÄfRf"f[]sf...[]f^<N"®Žž,É·K, Ž©"®<N"®,·,é,æ,æ,É,µ,Ä,,¾,¾,ç[]B

NEC Network Printer Status Server,É,Â,ç,Ä

f[]f[]b[]f[]g[]f[]n[]f[]N[]f[]%[]f[]C[]f[]A[]f[]"[]f[]g[]f[]v[]f[]Š[]f[]f^,ðf[]f[]b[]f[]g[]f[]n[]f[]n[]ä,Ä<æ—L,µ[]A[]f[]N[]f[]%[]f[]C[]f[]A[]f[]"[]f[]g[],Éf[]v[]f[]Š[]f[]f^,ì[]ó[]Ô,ð[]æ[]ö[]Š[]J,·,é[]è[]è[]#,É[]Š[]Ž[]n,µ,Ä,-,¾,¾,ç[]BŠ[]Ž[]n,·,é,É,í[]A[]PrintAgent,ìf[]v[]f[]p[]f[]ef[]B,Â[]m<æ—L[]f[]v[]f[]Š[]f[]f^,ð'ñ·ÿ,·,é[]n,ðf'f[]f[]b[]f[]N,·,é,©[]A[]mfRf"f[]gf[]f[]f[]f[]p[]f[]f[]<[]n[]í[]mfT[]fxfX[]n,Â"NEC Network Printer Status Server" ,ðŠ[]Ž[]n,µ,Ä,,¾,¾,ç[]B

NEC Printer Status Database,É,Â,ç,Ä

PrintAgent,Âf[]v[]f[]Š[]f[]f^,ì,·,x,Ä,ì[]ó[]Ô,ð·Û'¶,·,é,½,ß,É·K—v,ÉfT[]fxfX,Â,·[]BPrintAgent,ð,²~—p,ì[]è[]è[]#,í[]mfRf"f[]gf[]f[]f[]f[]p[]f[]f[]<[]n[]í[]mfT[]fxfX[]n,ì[]mfXf^[]f[]gf[]f[]bfv[]n[]í[]mfXf^[]f[]gf[]f[]bfv,ìŽí—p[]n,ð[]mŽ©"®[]n,É,µ,ÄfRf"f[]sf...[]f^<N"®Žž,É·K, Ž©"®<N"®,·,é,æ,æ,É,µ,Ä,,¾,¾,ç[]B

NEC Printer Status Watcher,É,Â,ç,Ä

PrintAgent'í%[]ž[]f[]v[]f[]Š[]f[]f^,ðŠ[]Žž<,·,é,½,ß,É·K—v,ÉfT[]fxfX,Â,·[]BPrintAgent,ð,²~—p,ì[]è[]è[]#,í[]mfRf"f[]gf[]f[]f[]f[]p[]f[]f[]<[]n[]í[]mfT[]fxfX[]n,ì[]mfXf^[]f[]gf[]f[]bfv[]n[]í[]mfXf^[]f[]gf[]f[]bfv,ìŽí—p[]n,ð[]mŽ©"®[]n,É,µ,ÄfRf"f[]sf...[]f^<N"®Žž·K, Ž©"®<N"®,·,é,æ,æ,É,µ,Ä,,¾,¾,ç[]B

NEC Printing Information Logger,É,Â,ç,Ä

'¾[]Ú[]f[]v[]f[]Š[]f[]f^,è[]Ú'±,³,è,½f[]Rf"f[]sf...[]f^,Â^ó[]ü[]í·ñ,ðf[]f[]O[]f[]t[]f[]@[]f[]C[]f<,É<L~^,·,é[]è[]è[]#,É[]Š[]Ž[]n,µ,Ä,-,¾,¾,ç[]BŠ[]Ž[]n,·,é,É,í[]A[]mfRf"f[]gf[]f[]f[]f[]p[]f[]f[]<[]n[]í[]mfT[]fxfX[]n,Â"NEC Printing Information Logger" ,ðŠ[]Ž[]n,µ,Ä,,¾,¾,ç[]BŽÿ%[]ñWindows NT<N"®Žž,ÉŽ©"®"I,ÉŠ[]Ž[]n,·,é,É,í[]mfXf^[]f[]gf[]f[]bfv[]n[]í[]mfXf^[]f[]gf[]f[]bfv,ìŽí—p[]n,ð[]mŽ©"®[]n,É,µ,Ä,,¾,¾,ç[]B
[]m[]PrintAgent,ìf[]v[]f[]p[]f[]ef[]B[]n[]í[]m[]LAN[]f[]{}[]f[]h[]Ž[]g—pŽž,ìPSW·\Ž;[]n[]í[]m'—[]M[]í—¹,Û,Â·\ Ž;[]n,Æ,È,Ä,Ä,ç,é[]è[]è[]#^ó[]ü[]f[]O,í[]í[]—,³,è,Û,¹,ñ,ì,Â[]A[]m[]PrintAgent,ìf[]v[]f[]p[]f[]ef[]B[]n[]í[]m[]LAN[]f[]{}[]f[]h[]Ž[]g—pŽž,ìPSW·\Ž;[]n[]í[]m^ó[]ü[]í—¹,Û,Â·\Ž;[]n,É,µ,Ä,,¾,¾,ç[]B
f[]f[]O[]f[]t[]f[]@[]f[]C<,íPrintAgent,ðf[]C[]f<"f[]X[]f[]g[]f[]f<,µ,½f[]t[]f[]H[]f<f_,ì"Log"f[]T[]f[]u[]f[]t[]f[]H[]f<f_,ÉCSVCE`Ž®,Â[]í[]—,³,è,Û,·[]Bft f@f[]C<-¾,í"[]f[]v[]f[]Š[]f[]f^-¾[]j.log",ì,æ,æ,É,È,è,Û,·[]B

NEC Private Spool System,É,Â,ç,Ä

'¾[]Ú[]f[]v[]f[]Š[]f[]f^,è[]Ú'±,³,è,½f[]Rf"f[]sf...[]f^,Âf[]f[]v[]f[]Š[]f[]f^<@"\,ð—~—p,·,é[]è[]è[]#,â[]A[]f[]f[]b[]f[]g[]f[]n[]f[]N[]f

%oCfAf"fg,ÉfŠfvfŠf"fg<@"\,đ'ň<Ÿ,.,é□é□‡,ÉŠJŽn,μ,Ä,-
,¾,¾,č□BŠJŽn,.,é,É,í□APrintAgent,lfvf□fpfefB,Å□mfŠfvfŠf"fg<@"\
,đ'ň<Ÿ,.,é□n,đf`fFbfN,.,é,©□A□mfRf"fgf□□[f<fpf|f<□n□□mfT□[frfX□n,Å"NEC Private Spool System"
,đŠJŽn,μ,Ä,¾,¾,č□B

▶□Ú,μ,,í□mfRf"fgf□□[f<fpf|f<□n□□mfT□[frfX□n,lfwf<fv,đ,²—,¾,¾,č□B

ŽQ□Æ

{button ,JI(`Pan4.HLP>step',`IDH_PA_HIGH_PAMANUALSTART')}} PrintAgent,đŽè"®,Å<N"®,.,é

{button ,JI(`Pan4.HLP>step',`IDH_PA_HIGH_PAMANUALEND')}} PrintAgent,đŽè"®,Å'âŽ~,.,é

PrintAgent,đŽè“® ,Á<N“® ,·,é

PrintAgent,đŽè“® ,Á<N“® ,·,é,É,Í^È%oº,ì,æ,α,É,μ,Ä,,¾,¾,¾,¾,¾,¾

- 1 □mfRf“fgf□□[f<fpf]f<□n,đŠJ,«□A□mfT□[frfX□n,đf_fuf<NfŠfbfN,μ□A"Spooler" ,²□mŠJŽn□n,¾,é,Ä,ç,é,ì,đŠm"F,μ,Ä,,¾,¾,¾,¾,¾,¾
- 2 "NEC Printer Status Database" ,đ<N“® ,μ,Ä,,¾,¾,¾,¾,¾,¾
- 3 "NEC Private Spool System" ,đ<N“® ,μ,Ä,,¾,¾,¾,¾,¾,¾
- 4 "NEC Remote Maintenance Manager" ,đ<N“® ,μ,Ä,,¾,¾,¾,¾,¾,¾
- 5 "NEC Printing Information Logger" ,đ<N“® ,μ,Ä,,¾,¾,¾,¾,¾,¾
- 6 "NEC Printer Status Watcher" ,đ<N“® ,μ,Ä,,¾,¾,¾,¾,¾,¾
- 7 "NEC Network Printer Status Server" ,đ<N“® ,μ,Ä,,¾,¾,¾,¾,¾,¾
- 8 □mfXf^□[fg□nf□fjf...□[,©,ç□A□mfvf□fOf%of€□n□□mfvfŠf“f^<@Ží-¼□n□□mPrintAgentVfXfef€<N“®□n,đfNfŠfbfN,μ,Ä,,¾,¾,¾,¾,¾,¾
- 9 □mfXf^□[fg□nf□fjf...□[,©,ç□A□m□Y’è□n□□mfvfŠf“f^□n,đfNfŠfbfN,μ□A•\Ží,¾,é,½fvfŠf“f^,ì†,©,ç- {fvfŠf“f^,đ’ì’đ,μ□A□f□fjf...□[.ì□mftf@fCf<□n□□mfvf□fpfefB□n,đŠJ,«□A□mf□[fg□n□□m’o•úCEüfTf□[fg,đ—LCEø,É,·,é□n,²f`fFfbfN,¾,é,Ä,ç,é,±,Æ,đŠm"F,μ,Ä,,¾,¾,¾,¾,¾,¾

,²’□^Ó

n , Žg,ç,É,È,Á,Ä,ç,évfŠf“f^,É,æ,Á,Ä,í□A“o~^,¾,é,Ä,ç,È,çfT□[frfX,à, ,è,Ü,·□B“o~^,¾,é,Ä,ç,È,çfT□[frfX,É,Á,ç,Ä,ìŽè□‡,í□A,““Ç.Y”ò,ì,μ,,¾,¾,¾,¾,¾,¾

“ÁŽê,ÈfvfŠf“f^Ú’±<@Ší,ð,“Žg,ç,ìê†

PrintAgent'Í%žfvfŠf“f^,ðfCf“fXfg[f<,μ,½,Æ,«,ÉŽw'è,μ,½f]
[fg,ÉAŠO•t,̀,ìfvfŠf“f^fCf“f^ftfF[fX•İŠ·fAf_fvf^,âfvfŠf“f^fofbftf@,ð,“Žg,ç,ìê†APrintAgent,Í³,μ,-
“@ì,μ,Û,¹,ñB,±,ê,ç,ì<@Ší,ð,“Žg,ç,É,È,éê†,ÍAŽŸ,ì[u,ðŽæ,Á,Ä,,¾,³,çB
{button ,Jl(` PAN4.HLP>step', `IDH_PA_HIGH_STOPBIDI95')} 'o•ûœü'ÉM<@“\,ðŽg—p,μ,È,ç,æ,π,É,·,é

ŠY“-.,.é□o—Íf|□[fg,ì,ÝPrintAgent,đ“@□ì,μ,È,ç,æ,κ,É,.,.é

ŠY“-.,.é□o—Íf|□[fg,ì,ÝPrintAgent,đ“@□ì,μ,È,ç,æ,κ,É,.,.é□ê□#,í^È%oº,ì,æ,κ,É,μ,Ä,,¾,¾,ç□B

1 □mfXf^□[fg□nf□fjf...□[.©,ç□A□m□Ý'è□n□|□mfvfŠf“f^□n,đfNfŠfbfN,μ,Ü,·□B

2 •\Ž!,¾,è,½fvfŠf“f^,ì't,©,ç- {fvfŠf“f^,đ'l'đ,μ□A□f□fjf...□[.ì□mftf@fCf<□n,©,ç□A□mfvf□fpfefB□n,đŠJ,«,Ü,·□B

3 □mf|□[fg□n□|□m'o•ûEüfTf|□[fg,đ—LCEø,É,.,.é□n,ìf`fFfbfN,đ,í,,μ□AOK,đfNfŠfbfN,μ,Ü,·□B

PrintAgent,ì'Ç%Á,Æíœ

PrintAgent,Á,íPrintAgent,ì<@"\,ì'Ç%Á,Æíœ,đŠÈ'P,És,!,Ü,·B

PrintAgent,íjffXf^f€fCf"fxfg[f<,đ,·,é,±,Æ,É,æ,Á,ÄAŽg—p,μ,½,ç<@"\,¾,¯,đfCf"fxfg[f<AŽg—
p,μ,É,ç<@"\,đfAf"fCf"fxfg[f<,·,é,±,Æ,ª,Ä,«,Ü,·BPrintAgent,ì<@"\,ì'Ç%ÁAíœ,đs,κ
,É,ímfXf^ [fgn|mY'ènmfRf"fgf[f<fpf[f<n|mfAfvfŠfP[fVf#f",ì'Ç%Á,Æíœn|mNEC
PrintAgentn,đf_fuf<fNfŠfbfN,μ,Ä,,¾,³,çB

,²^Ó

n , Žg,ç,É,È,Á,Ä,ç,éfvfŠf"f^,É,æ,Á,Ä,íA mPrintAgent,ì'Ç%Á,Æíœn,ª,²—~—p,É,È,ê,È,çê#ª, ,è,Ü,
BÚ,μ,íAfvfŠf"f^,ìfU[fYf}ff...fAf<,đ,²ŽQÆ,,¾,³,çB

fCf“fXfg□f<,·,éfvfŠf“f^,ì<@Ží-¼,ª•\Ž|,³,ê,Ü,·□B

;"Ç,Ý,,¾,¾,ç. TXT,²fCf"fXfg[]f<,¾,ê,Ü,·BfvfŠf"f^,ð,Í,¶,ß,Ä,"Žg,ç,É,È,é[]ê[]†,É,"Ç,Ý,,¾,¾,ç[]B

f^fXfe[]f^fXfEfBf"fhfE,afCf"fXfg[]f<,³,ê,Û,·Bf^fXfe[]f^fXfEfBf"fhfE,íA%æ-Ê,â
%¹[]É,æ,èf^fXfEfBf"fhfE,ðŠĂŽ<,.é,±,Æ,ª,Å,Û,·B

f v f Š f " f ^ f X f e [f ^ f X f E f B f " f h f E , ì - { ' ì , ð f C f " f X f g [f < , μ , Ü , · [B f v f Š f " f ^ , ì [ó ' Ô , ð % æ - Ê , Å , " ' m , ç , ¹ , μ , Ü , · [B -
{ ' ì , ì , Ý , ð f C f " f X f g [f < , μ , ½ [ê [# [A % ° ¹ [° , Ê , æ , é ' Ê ' m , í , ³ , ê , Ü , ¹ , ñ [B

Windows NT 4.0—ρ, ðf v f Š f “ f ^ f h f % o f C f o , ð f C f “ f X f g □ [f < , μ , Ü , · □ B

'ä'Öfhf%oCfo,đfCf"fxfg[f<,μ,Ü,·BWindows NT 4.0,ì,Ý•\Ž|,³,ê,Ü,·B,·,Å,É'ä'Öfhf
%oCfo,³fCf"fxfg[f<,³,ê,Ä,ç,ééé‡,Í•\Ž|,³,ê,Ü,¹,řB

PrintAgent,lfwf<fv,ðfCf" fXfg□[f<,μ,Ü,·□B

fŠf. [fgfpflf<,đfCf“fXfg [f<,μ,Ü. ·BfŠf. [fgfpflf<,Æ,íAfvfŠf“f^,ì€ [ifpflf<,Ås,Á,Ä,č,½ŠeŽíY’è,đfRf“fsf...
 [f^ã,©,çs,!,éft [fefBfŠfefB\ftfgfEfFfA,Å. ·BŠÇ—ŽÒ,Æ,μ,ÄfCf“fXfg [f<,μ,½,Æ,«,É·\Ž!,³,ê,Ü. ·B

<α'ÊflfvfVf#f",Æ,μ,ÄfvfŠf"f^ê—□AfvfŠf"f^ŠÇ—□ft□[fefBfŠfefB,ðfCf"fXfg□[f<,μ,Û,·□BfvfŠf"f^ŠÇ—
□ft□[fefBfŠfefB,ðfCf"fXfg□[f<,.é,É,Í□AŠÇ—□ŽÒ,Æ,μ,ÄfCf"fXfg□[f<,.é•K—v,^a, ,è,Û,·□B

Web PrintAgent,đfCf“fXfg□[f<,μ,Ü,·□BfvfŠf“fgfT□[fo□[,ÉŽ-‘O,ÉMicrosoft Internet Infomation
Server,È,ÇWebfT□[fo□[,³fCf“fXfg□[f<,³,è,Ä,È,ç,Æ•\Ž|,³,è,Ü,¹,ñ□B□Ú,μ,,í□AfvfŠf“f^,ìft□[fU□[fYf}ffj...
fAf<,đ,²ŽQ□Æ,,³/₄,³,ç□B

f v f Š f " f ^ ^ ê — — , ð f C f " f X f g [f < , μ , Ü , · □ B f v f Š f " f ^ ^ ê — — , Í □ A , " Ž g , ç , É , È , Á , Ä , ç , é f R f " f s f ...
□ [f ^ , É f C f " f X f g [f < , ð , é , Ä , ç , é f v f Š f " f ^ , ð ^ ê — — • \ Ž ! , · , é , ± , Æ , ð , Å , « , Ü , · □ B

f v f Š f " f ^ Š Ç — □ f t □ [f e f B f Š f e f B , đ f C f " f X f g □ [f < , μ , Ü , · □ B f v f Š f " f ^ Š Ç —
□ f t □ [f e f B f Š f e f B , Å , í □ A f v f Š f " f ^ Ž © " ® □ Ø ' Ö □ A f □ □ [f < ' É ' m , ð , ² — ~ — p , É , È , è , Ü , · □ B f v f Š f " f ^ Š Ç —
□ f t □ [f e f B f Š f e f B , đ f C f " f X f g □ [f < , · , é , É , í □ A Š Ç — □ Ž Ò , Æ , μ , Ä f C f " f X f g □ [f < , · , é • K — v , ð , , è , Ü , · □ B

f^fŠf“f^Ž©“®∅’Ö,đfCf“fXfg□[f<,μ,Ü,·□Bf^fŠf“f^Ž©“®∅’Ö,Æ,Í□AfhfLf...
f□f“fg,ì^óüŽž,ÉfOf□[f^f^fŠf“f^,đŽw’è,μ,Ä^óü,đ□s,κ,Æ□A•;□”,ìf^fŠf“f^,ÉfhfLf...
f□f“fg,đ•ŽU,μ,Ä^óü,μ□A^óüŽžŠÔ,ì’Z□k,đ□s,κ<@“\,ì,±,Æ,Å,·□B

f□□[f<'É'm,đfCf“fXfg□[f<,μ,Ü,·□Bf□□[f<'É'm,Æ,í□AfvfŠf“f^,Å•ÛŽç—p,ìfGf%□□[,ª”□¶,μ,½□ê□‡,É□AfGf
%□□[□î•ñ,â□Š□Ý'n□î•ñ,È,Ç,đ<L□Ú,μ,½f□□[f<,đ”□M,·,é<@“\,Å,·□B,±,ê,đ,**m,d,b e-**
mailf□f“fejif“fX,ÆĀÄ,Ñ,Ü,·□B

f v f Š f " f ^ Š Ç — □ f t □ [f e f B f Š f e f B , ð f C f " f X f g □ [f < , μ , Ü , · □ B f v f Š f " f ^ Š Ç —
□ f t □ [f e f B f Š f e f B , Æ , Í □ A f l f b f g f □ □ [f N f v f Š f " f ^ , â f □ □ [f j f < f v f Š f " f ^ □ A L A N f { □ [f h , à , μ , , Í L A N f A f _ f v f ^ , Å □ Ú ' ±
, ³ , è , ½ f v f Š f " f ^ , ð ^ è — • \ Ž | , μ , Ü , · □ B f C f " f X f g □ [f < E ` ' Ô , É , æ , è □ A f v f Š f " f ^ , Ì Ž © " ® □ Ø ' Ö □ A f □ □ [f < ' É ' m , È , Ç , Ì < @ " \
, ð , " Ž g , ç , É , È , é , ± , Æ , ¢ , Å , « , Ü , · □ B

fCf“fXfg[]f<,μ,Ü,·,Æ[]A^óüf[]fO,đ[]¬,μ,Ü,·[]BWindows NT,ì,Ý•\Ž|,³,ê,Ü,·[]B

PrintAgent,lfAf“fCf“fXfg[]f<

PrintAgent,đfAf“fCf“fXfg[]f<,·,éêê‡,íAf+[]fU[]fYf}fjf...fAf<,lPrintAgent'Ç%Á,Æíœ,ì€,đŽQÆ,μ,Ä,-
,¾,¾,çB

PrintAgent'í%žfvfŠf“f^,Æ,»,ì¼,ìfvfŠf“f^,ì<æ‘ŕ

PrintAgent'í%žfvfŠf“f^,Æ,»,ì¼,ìfvfŠf“f^,ð“˘,ŕf|[[fg,Å~—p,·,éêê‡,ì'ŕ^ÓŽ-€

n PrintAgent'í%žfvfŠf“f^,Æ,»,ì¼,ìfvfŠf“f^,ªA“˘,ŕm^óüüæ,ìf|[[fgn[i*1j,ðŽg—p,μ,Ä,ç
,éêê‡A^óü,ª³í,É,Å,«,È,©,Á,½,èAPrintAgent,ª³,μ,“@ì,μ,É,çêê‡,ª, ,è,Ü,·B

{button ,JI(`PAN4.HLP>step', `IDH_PA_HIGH_PRINTONPA')} '¼fvfŠf“f^,æ,èPrintAgent'í%žfvfŠf“f^,ð—
Dæ,μ,Å^óü,³,¹,é

*1fvfŠf“f^ftfHfç_“à,ìŠefvfŠf“f^,ìfvfŕpfefB,ðŠJ,,ÆAmf|[[fgnf^fu,ÅACE»ŕŕŕ'è,³,è,Ä,ç,ém^óü,·,é|
[[fgn,ðŠm”F,·,é,±,Æ,ª,Å,«,Ü,·B

ŽQÆ

[PrintAgent,Å,ìf|\[\[fg,ìŕŕ'è](#)

'¼fvfŠf“f^,æ,èPrintAgent'Í%žvfŠf“f^,ð—Dæ,μ,Ä^óü,³,¹,é

PrintAgent,É'Í%ž,μ,Ä,ç,È,çfvfŠf“f^,³“~,¶[^óüüæ,lf|[fg],ÉÚ'±,³,ê,Ä,ç,é,½,β,ÉPrintAgent'Í
%žvfŠf“f^,Ä^óü,³³í,É,Ä,«,É,©,Á,½,èPrintAgent,³³,μ,“@ì,μ,È,çéç,ÍA^È%º,ì,æ,κ,É,μ,Ä,-
,¾,³,çB

- 1 mfxf^|[fg]nfjff...|[,©,çAmÝ'èn|[mfvfŠf“f^|n,ðfNfŠfbfN,μ,Ü,·B
- 2 •Ž!,³,ê,½fvfŠf“f^ftfHf<f_,©,çA'¼,lfvfŠf“f^,lfvf|pfefB,ðŠJ,«,Ü,·B
- 3 mfl|[fg]nf^fu,Åm'ó•úCEüfTf|[fg,ð—LCEø,É,·,é|n,lf`fFfbfN,ð,í,,μ,Ü,·B
- 4 mOK|n,ðfNfŠfbfN,μ,Äfvf|pfefB,ð•Ä,¶,Ü,·B

'^Ó

n ,»,ìCEä'¼,lfvfŠf“f^,ð,²Žg—p,É,È,ééç,ÍA“~,¶f_cfAf|Of{fbfNfX,ÅAm'ó•úCEüfTf|[fg,ð—
LCEø,É,·,é|n,ðf`fFfbfN,μ,Ä,Žg,ç,,¾,³,çB

flfbfgf[][]fN,ÉŠÖ,·,é-â'è

,²—,É,È,è,½,ç[]€-Ú,ðfNfŠfbfN,μ,Ä,,¾,³,ç[]B

{button ,JI(`Pan4.HLP>tblshoot',`IDH_PA_ERR_NET_CANTPRINT')}

flfbfgf[][]fNfvfŠf“f^,É'í,μ,Ä^ó[]ü,ª,Ä,«,È,ç

{button ,JI(`Pan4.HLP>tblshoot',`IDH_PA_ERR_NET_PSWCANTGETINFO')}} PSW,ÅfT[][]fofRf“fsf...


[]f^,ì[]î•ñ,ªZæ“¾,Ä,«,È,ç

{button ,JI(`Pan4.HLP>tblshoot',`IDH_PA_ERR_NET_LOWPRINT')}} flfbfgf[][]fN,Ä^ó[]ü,ª'x,ç

{button ,JI(`Pan4.HLP>tblshoot',`IDH_PA_ERR_PIC')}} []»•iftf[][]fg


fjfbfgf[]fNjvfŠf“f^,É’í,μ,Ä^óü,ª,Ä,«,È,ç

n Windows,ìfjfbfgf[]fN,ìŸ’èAfvfŠf“f^,ìŸ’è,ª^Ùí,Ä,·B

 Windows,ìfjfbfgf[]fN,ìŸ’èAfvfŠf“f^,ìŸ’è,ðŠm”F,μ,Ä,,¾,¾,çBÚ,μ,,ÍAWindows,ìfwfçfv,ð,²—,-,¾,¾,çB

PSW,ÁfT[fofRf“fsf...[f^,ìî•ñ,Žæ“¾,Á,«,È,ç


n flfbfgf[fNf,fWf...[f<A,Ü,½,íflfbfgf[fN,»,ì,à,ì,É-â'è,ª, ,è,Ü,·B

PSW,Á•Ž|,³,è,Ä,ç,éfbfZ[fW,É,æ,Á,Ä'î^•û-@,ª^Ü,È,è,Ü,·BÚ,μ,,íA[mfXf^ [fg[nf]fj...

[,©,çA[mfvf[fOf%of€[n|[mfvfŠf“f^<@Ží-¼n|[mPrintAgentfwf<fv[n]

mPSW,íffbfZ[fW[n,ì,»,è,¾,è,ì€,δZQ[Æ,μ,Ä,,¾,³,çB

n PrintAgent,íANetBEUIfvf[fgfRf<,ðfTf|[fg,μ,Ä,ç,Ü,¹,ñB

PrintAgent,íANEC TCP/IP Printing System(Windows 98/95),Ü,½,íNEC Network Port(Windows NT),ì,Ý,²
—~—p,É,È,è,Ü,·B

fŠf, [lfgfpflf<, Áflfbfgf [fN<α—LfvfŠf“f^, ìî•ñ, aŽæ“¾, Á, «, È, †

n fvfŠf“f^, aA'o•ûœü'ÉM, Á, «, È, †fCf“f^ftfF [fX, ÅÚ'±, ³, ê, Ä, †, Ü, ·B, à, μ, , ífvfŠf“f^, afofbftf@, ðœo—
R, μ, ÅÚ'±, ³, ê, Ä, †, Ü, ·B

fvfŠf“f^, ìœ»Ý, ìÝ'è, í“Ç, Ýž, p, ±, Æ, a, Á, «, Ü, ¹, ñB

n fvfŠf“f^, aiftf%ofCf“, Á, ·B

iftf%ofCf“, ìê±, ífvfŠf“f^, ìÝ'è, í“Ç, Ýž, ß, Ü, ¹, ñB^óü%oÂfXfCfbf` , ð%Ÿ, μ, Á, , ¾, ¾, †B

n fvfŠf“f^, a^óü't, Á, ·B

^óü't, ìê±, ífvfŠf“f^, ìÝ'è, í“Ç, Ýž, ß, Ü, ¹, ñBPSW, È, Ç, Á, ²Šm“F, ì, α, !A^óü|—¹, ð, 'Ö, ¿, , ¾, ¾, †B

fŠf, [fgfpflf<, Ålfbfqf [fN<α—LfvfŠf“f^, ÖÝ'è, Å, «, È, t
n fŠf, [fgfpflf<, Ålfbfqf [fN<α—LfvfŠf“f^, ÖÝ'è, ðs, ", x, Æ, μ, Å, t, Ü, ·B
fZfLf...fŠfefB, É, æ, è Afbfqf [fN<α—LfvfŠf“f^, Ö, ÍÝ'è, Å, «, Ü, ¹, ñB

ŽQÆ

[fŠf, \[fgfpflf<, fZfLf...fŠfefB](#)

fifbfgf[]fN,Å^óü,ª'x,ç

n 'o•ûCEü'ÊM<@"\,ð,²Žg—p,É,È,Á,Ä,ç,Ü,·B

á'¬,Èfifbfgf[]fN%ñü,²Žg—pŽž,È,ÇA'o•ûCEü'ÊM<@"\,ð,²Žg—p,É,È,ç,È,ç,ÆA^óü,ª'¬,,È,éê±,ª,
,è,Ü,·B

mPrintAgent,ìfvf[]pfefB[]n,ìmLANf{[]fhŽg—pŽž,ìPSW•\Ž![]n,ªm^óü|—¹,Ü,Å•\Ž![]n,ÉY'è,³,è,Ä,ç,
,Ü,·B

mPrintAgent,ìfvf[]pfefB[]n,ìmLANf{[]fhŽg—pŽž,ìPSW•\Ž![]n,ªm'—M|—¹,Ü,Å•\Ž![]n,ÉY'è,·,é,±,
,Æ,Å%ü'P,³,è,éê±,ª,è,Ü,·B

ŽQÆ

'á'¬%ñü,â[]—Ê%Ü<à%ñü,Å,ìŽg—p

,»,'¼,ì-â'è

,²—,É,È,è,½,ç□€-Ú,ðfNfŠfbfN,μ,Ä,,¾,¾,ç□B

{button ,JI(`Pan4.HLP>tblshoot',`IDH_PA_ERR_ETC_PAOFF') } PrintAgent,ª«N“® ,μ,Ä,ç,È,ç

{button ,JI(`Pan4.HLP>tblshoot',`IDH_PA_ERR_ETC_NOSPOOLER') } ^ó□ü,ÉŽžŠÔ,ª,©,©,é

{button ,JI(`Pan4.HLP>tblshoot',`IDH_PA_ERR_ETC_DATA LAMP') } ^ó□ü,μ,Ä,ç,È,ç,ì,ÉfvfŠf“f^,ì□mff□[f^□nf %of“fv,ª“ _ “” ,·,é

{button ,JI(`Pan4.HLP>tblshoot',`IDH_PA_ERR_ETC_DATA REMAIN') }

^ó□üff□[f^,ªfvfŠf“f^,ÉŽc,Á,½,Ü,Ü,É,È,é

{button ,JI(`Pan4.HLP>tblshoot',`IDH_PA_ERR_ETC_PSWSTATUS') } fvfŠf“f^,ì□ó'Ô,ÆPSW,ì•Ž!,ª^á,Á,Ä,ç ,é

{button ,JI(`Pan4.HLP>tblshoot',`IDH_PA_ERR_ETC_PRNLOG') } ^ó□üff□fO,ª□ì□¬,¾,è,È,ç


{button ,JI(`Pan4.HLP>tblshoot',`IDH_PA_ERR_ETC_NEXTLOGON') }


PSW,ìfvf□pfefB□APrintAgent,ìfvf□pfefB,ì□Ý'è,ªŽŸ%oñf□OfIf“Žž,É”½%of,¾,è,È,ç

{button ,JI(`Pan4.HLP>tblshoot',`IDH_PA_ERR_PIC') } □»•ifTf|□[fg

PrintAgent, a<N" @, μ, Ä, ç, È, ç

n PrintAgent, ³ft[]fU, È, æ, Á, Ä[]—¹, ³, è, Ü, μ, ½[]B


 , ±, ÿ{f^f“

 , ðfNfŠfbfN, ., é, ©[]A[]mfXf^[]fg[]nf[]jf...[][, ©, ç[]mfvf[]fOf%of€[]n[]|[]mfvfŠf“f^<@Ží-¼[]n[]|
[]mPrintAgentfVfXfef€<N" @[]n, ðfNfŠfbfN, ., é, Æ[]APrintAgent, a<N" @, ³, è, Ü, .[]B

ŽQ[]Æ

PrintAgent, ì<N" @


n []mPrintAgent, ðvf[]pfefB[]n, Å[]A[]mfVfXfef€, ðŽ©“ @“ì, È<N" @, ., é[]n, ³f`fFfbfN, ³, è, Ä, ç, Ü, ¹, ñ[]B

 []mfVfXfef€, ðŽ©“ @“ì, È<N" @, ., é[]n, ðf`fFfbfN, μ, Ä, , ¾, ³, ç[]BŽŸ%oň, ìWindowsf[]fOfj“Žž, ©, ç, ±, ì[]Ý'è, Í—
LCEø, È, È, è, Ü, .[]B

ŽQ[]Æ


PrintAgent, ðvf[]pfefB

n •K—v, Èf, fWf...[]f<, ³fCf“fXfg[]f<, ³, è, Ä, ç, È, ç, ©[]í[]œ, ³, è, Ä, ç, Ü, .[]B

 PrintAgent, ð[]ÄfCf“fXfg[]f<, μ, Ä, , ¾, ³, ç[]B

^óü,ÉŽšŦ,â,©,©,é

n jXfv[f%o,đŽg—p,μ,È,çŸ'è,É,È,Á,Ä,ç,Û,·

mfXf^ [fg n f f f... [, © , ç m Ÿ ' è n | m f v f Š f ' f ^ n , đ f N f Š f b f N , μ A ' î Ű , l f v f Š f ' f ^ , đ ' l ' đ , μ f f f f...
 [, l m f t f @ f C f < n , © , ç m f v f f p f e f B n , đ Š] , « , Ű , · B m f X f P f W f ... [f < n | m f v f Š f ' f ^ , É ' ¼ Ű Ű ^ ó ü f f [f ^ , đ ' —
 , é n , đ Ž g — p , μ , ½ é # A ^ ó ü | — 1 , Ű , Ā Ž š Ŧ , â , © , © , é , ± , Æ , â , , è , Ű , · B , » , l é # , l A m ^ ó ü f h f L f ...
 f f ' f g , đ f X f v [f < , μ A f v f f O f % f € , l ^ ó ü | ^ — , đ , ' ¬ , É [s , x] , đ , 2 Ž g — p , , ¾ , ¾ , ç B

^óü,μ,Ä,ç,È,ç,ì,ÉfvfŠf“f^,ìmf[]f^nf%of“fv,ª“_“”,,é

n fv fŠf“f^,Æ’o•ûCEü’ÊM,ðs,Á,Ä,ç,Ü,·B

^óüŽž^ÈŠO,É,ÉAfvfŠf“f^,ìmf[]f^nf%of“fv,ª“_“”,μ,Ü,·ªA,±,ê,í^óüff[]f^,Å,í, ,è,Ü,¹,řBŽ©“®“l,É
□Á“”,μ,Ü,·B

^óüff[f^,^fvfšf“f^,ÉŽc,Á,½,Ü,Ü,É,È,é

n fn[fhfffBfXfN,ì<ó,«—e—Ê,â'«,è,È,ç,½,ß,É³,μ,ç^óüff[f^,âiñ—,Á,«,Ü,¹,ñ,Á,μ,½B

fvfšf“f^,ìmf[f^nf%of“fv,a“_““,μ,½,Ü,Ü^óü,âi—¹,μ,È,çêñ,íAfn[fhfffBfXfN,ì<ó,«—e—
Ê,ðŠm”F,μ,Á,,¾,¾,çB<ó,«—e—Ê,â,çêññA•s—v,Ëftf@fCf<,ðíœ,μ,Á<ó,«—e—
Ê,ð’â,â,μ,Á,©,çA^óü,μ,È,,μ,Á,,¾,¾,çBfvfšf“f^,ÉŽc,Á,Á,ç,é-ç^óüff[f^,íAfvftfgfXfCfbf`,ð
%oY,μ,È,â,ç”r ofXfCfbf`,ð%oY,μ,ÁAfvfšf“f^”à,ÉŽc,Á,Á,ç,é-ç^óüff[f^,ð^óü,μ,Á,,¾,¾,çB

,²’^ó

n ,”Žg,ç,É,È,Á,Ä,ç,éfvfšf“f^,É,æ,Á,Ä,íA•Žì,³,è,éfbfZ[fW,,æ,Ñ”rño•û-@,â^Ü,È,éêññ,â, ,è,Ü,·BÜ,μ
,,ífvfšf“f^,ìf[fU[fYf}fjf...fAf<,ð,²—,¾,¾,çB

^óüfjfo, aqî- , 3, ê, È, ç

n fT [frfX, aŠ]Žn, 3, ê, Ä, ç, È, ç B


ŠjŽn, ., é, È, íA mfRf“fgf [f<fpf]f<n [mfT [frfX n, Å"NEC Printing Information Logger" , ðŠjŽn, μ, Ä, - , 3/4, 3, ç B ŽY%ñWindows NT<N“ @ Žž, ÉZ ©“ @“l, ÉŠjŽn, ., é, È, ímfXf^ [fgfAfbfv n [mfXf^ [fgfAfbfv, ìŽí— p n, ðmŽ ©“ @ n, É, μ, Ä, , 3/4, 3, ç B

n mPrintAgent, ìfvf [pfefB n [mLANf{ [fhŽg—pŽž, ìPSW, ì•Ž! n, aqm’—M |—¹, Ü, Å•Ž! n, Æ, È, Ä, Ä, ç , é B


mPrintAgent, ìfvf [pfefB n [mLANf{ [fhŽg—pŽž, ìPSW•Ž! n [m^óü-¹, Ü, Å•Ž! n, É, μ, Ä, - , 3/4, 3, ç B

fjvřřf“f^,ìó’Ô,ÆPSW,ì\Žì,ª^á,Á,Ä,ç,é

n PSW,É•\Žì,ª,è,Ä,ç,éfjvřřf“f^,ìó’Ô,ªAÄV,ìfjvřřf“f^,ìó’Ô,Á,í, ,è,Û,ª,ñB

 PrintAgent,Á,ìA^óü’t,Éfjvřřf“f^,ìí•ñ,ðŽ©“®“ì,ÉŽæ“¾,µ,Û,ªA,“Žg,ç,É,È,Á,Ä,ç,éPrintAgent,ìÝ’è,É,æ,Á,Ä,ìAfvřřf“f^,ìí•ñ,ðŽ©“®“ì,ÉŽæ“¾,µ,Û,ªBfvřřf“f^,ìí•ñ,ðŽæ“¾,·,é,É,ìPSW,ìmÄV,ìfXfe[]f^fX,ÉXVnf{f^f“,ðfNfřřbfN,µ,Ä,-,¾,¾,çBí,ÉÄV,ìí•ñ,ðŽæ“¾,µ,½,çè#,ìAPSW,ìf[]fj...[][,©,çmflfvfvf#“n[]m’É’mCE`Ž@n,ìmí,ÉfXfe[]f^fX,ðŽæ“¾n,ðf`fřřbfN,µ,Ä,,¾,¾,çB

n fjvřřf“f^,ìí•ñŽæ“¾,ìf^fCf~f“fO,É,æ,èAZÀÜ,ìfjvřřf“f^,ìó’Ô,Æ,í^Û,È,é,±,Æ,ª, ,è,Û,·B

 PSW,ÉmÄV,ìfXfe[]f^fX,ÉXVnf{f^f“,ª,È,çè#A,Û,½,ìm’É’mCE`Ž®,ìfvřřfřřbfBnf_fCfA[]fOf{fřřfNfX,Émí,ÉfXfe[]f^fX,ðŽæ“¾n,ř`fřřbfN,¾,è,Á,ç,éè#A•\Žì,ª,è,Ä,ç,éó’Ô,ìí%».,ìf^fCf~f“fO,ªAZÀÜ,ìfjvřřf“f^,ìí%».,Æ,í^Û,È,é,±,Æ,ª, ,è,Û,·,ì,Á,²—¹³,¾,¾,çB

»•ifTf|f|fg

NECvfŠf“f^,ÉŠÖ,·,é,²Žĵ-âE,²‘Š‘k,ÍANEC Bit-INN,“,æ,N“-ŽĐŽw‘è,ÌfT[frfX‘<ĈĖû,Ā,“Žó,¯,μ,Ä,č
,Û,·B,Û,½<Zp“l,È“à—e,Ì,²Žĵ-âE,²‘Š‘k,ÍANECfpfVrf“fCf“ftfHf[fVf#f“fZf“f^ [É,²~A—,¾,³,čB

ã<L‘<ĈĖû,Ì“d“b”Ô+AZó•tŽžŠÔ,É,Ā,č,Ä,ÍA[uNECfT[frfX-Ô^ê—•\v,đ,²—,¾,³,čB

fvfŠf“f^,Ìft[fU[fYf}fjf...fAf<à, ,í,¹,Ä,²ŽQAE,,¾,³,čB

,Û,½AfpfVrf“î•ñfT[frfX,đŽg,Ā,ÄANECvfŠf“f^,ÉŠÖ,·,éĀVî•ñ,đ“üžè,·,é,±,Æ,³,Ā,«,Û,·B

Ů,μ,,Íuf+ [fU[fYf}fjf...fAf<v,Ìuî•ñfT[frfX,É,Ā,č,Äv,đŽQAE,μ,Ä,,¾,³,čB

fjXf^f€fCf“fXfg[]f<,Æ,ÍAf|fbfgf[][]fNfT[]fo,©,çPrintAgentf\
ftfgfEjFfA,đfCf“fXfg[]f<,.éêëñ,ÉAfCf“fXfg[]f<,ìĈ`'Ô,đ'Ì,Ô,±,Æ,³,Å,«A»,±
,ÅmfjXf^f€n,đ'Ì'đ,μ,½êëñ,ìfCf“fXfg[]f<•û-@,ì,±,Æ,Å,·B

fqf“fg

f|fbfgf[][]fNfT[]fo,©,çfCf“fXfg[]f<,.é•û-@,É,Â,ç,Ä,ÍAf+[]fU[]fYf}fjf...fAf.“™,đŽQ[]Æ,μ,Ä,,¾,³,çB

fšfvfšf“fg, ì, ½, ß, Éfn□[fhffBfXfN, É•Ú‘¶, ³, ê, ½^ó□üfhfLf...f□f“fg, ì, ±, Æ, Å, ·□B

«»Ÿ,ìŸ'è,ð-³«ø,É,μ,Äf_fCfAfffO,É-ß,è,Û,·B

'O%ñ,ìÝ'è,ì,Ü,Üf_fCfAf_fO,đ!—¹,μ,Ü,·B

«»Ÿ,ìŸ'è,ð-³«ø,É,μ,Ä""l,ìŸ'èf_CfAf_fO,É-β,è,Ü,·B

Žw'è,³,ê,½ftfHf<f_,Æ,»,ìÅ'â'l,ÅÝ'è,μAÝ'èf_cfAfffO,É-β,è,Û,·B

fOj<[]fvfjŤf^,Æ,í[]AfvjŤf^Ž©“®[]Ø'Ö<@“\,đ—~—p,·,é,½,ß,ìfvjŤf^,Å,·[]B

1999/12/10 kenji

