

fNfCfbfNfwf<fv

, í, ¶, ß, É

, ±, ±, Á, í, PrintAgent, ð, É, É, <@ "\, É, Á, ç, Ä, Å, Š, È, P, É, à-¾, µ, Ü, ·, B, æ, è, ù, ×, È, à-¾, ð, ² —
, É, È, è, ½, ç, è, ð, ð, í, A, ±, ð, f, w, f, < f, v, ð, ¶, ð, ä, ð, m, f, g, f, s, f, b, f, N, ð, n, ð, f, N, f, S, f, b, f, N, µ, ·, Ž, ¶, ³, è, ½, Ú, Ž, Ÿ, ©, ç, » , è, ¼, è, ð, €-
Ú, ð, f, w, f, < f, v, ð, ² —, , ¾, ³, ç, B

PrintAgent

PrintAgent, í, A, f, v, f, Š, f, f, ^, ð, æ, è, % , ð, " , K, É, Ž, g, x, ±, /, E, a, Å, «, é, f, v, f, X, f, e, f, €
, Å, ·, B, **PrintAgent**, É, í, A, f, v, f, Š, f, f, ^, f, X, f, e, f, [f, ^, f, X, f, E, f, B, f, " , f, h, f, E, a, N, ®, µ, Ü, ·, B, **PrintAgent**, í, Windows NT
3.51, f, ¶, f, O, f, f, " , Ž, É, —, \$, ð, ä, a, è, A, **PrintAgent**, f, A, f, C, f, R, f, " , a, ·, Ž, ¶, ³, è, Ü, ·, B

fvfŠf“f^fXfe[f^fXfEfBf“fhfE[iPSW]



PrintAgentfAfCfRf“, ð, % , E, f, N, f, Š, f, b, f, N, µ, ·, Ž, ¶, ³, è, ½, f, v, f, Š, f, f, ^, ¼, ð, f, Š, f, X, f, g, ©, ç, —
Ú, “, ð, ð, f, v, f, Š, f, f, ^, ð, “, ð, ·, é, A, E, A, f, v, f, Š, f, f, ^, f, X, f, e, f, [f, ^, f, X, f, E, f, B, f, “ , f, h, f, E, a, N, ®, µ, Ü, ·, B, f, v, f, Š, f, f, ^, f, X, f, e, f, [f, ^, f, X, f, E, f, B, f, “ , f, h, f, E, í, A, “ , Ž, g, ç, É, È, Á, Ä, ç, é, f, R, f, “ , f, s, f, ... [f, ^, ð, % , æ, —, È, ð, ä, Å, A, f, v, f, Š, f, f, ^, Å, ð, “ , ó, ü, ð, ó, < µ, â —, p, Ž, t, ¶, Ø, è, È, Ç, ð, f, G, f, % , ð, [, ð, Š, Ä, Ž, < , ·, é, ±, /, E, a, Å, «, é, f, t, f, g, f, E, f, F, f, A, Å, ·, B, f, v, f, Š, f, f, ^, f, X, f, e, f, [f, ^, f, X, f, E, f, B, f, “ , f, h, f, E, í, A, “ , ó, ü, Ž, Ž, É, Ž, ©, “ , ®, “, ð, —, \$, ð, ä, a, è, “ , ó, ü, a, ¶, í, Á, ½, ±, /, E, ð, % , æ, —, È, â, % , ð, “ , ¶, Å, m, ç, “ , 1, Ä, è, Ü, ·, B, » , ð, ½, ß, A, í, ‘, í, ‘, f, v, f, Š, f, f, ^, Ü, Å, ‘, «, ð, % , ð, ^, Ñ, “ , ó, ü, a, ¶, í, Á, ½, ©, Ç, x, ©, ð, Š, m, “ , F, ·, é, ·, K, —, v, a, , è, Ü, “ , ð, ð, ð, **PrintAgent**, ð, f, l, b, f, g, f, ¶, ¶, ¶, N, f, v, f, Š, f, f, ^, ð, “ , è, ·, à, ð, ð, ð, ð, ¾, Ž, g, ç, â, ·, ³, ð, ð, ð, < Ÿ, ç, ½, µ, Ü, ·, B
*% , æ, —, È, í, A, **MultiWriter 2250H**, ð, f, C, f, “ , f, X, f, g, [f, < , µ, ½, —, á, Å, ·, B

fqf“fg

n PrintAgentfAfCfRf“, ð, % , E, f, N, f, Š, f, b, f, N, ·, é, A, E, A, PrintAgent, Å, Ž, g, —, p, Å, «, é, f, v, f, Š, f, f, ^, ¼, ð, “ , è, —
, a, E, » , è, Ü, ·, B, f, v, f, Š, f, f, ^, —
¼, ð, f, N, f, Š, f, b, f, N, ·, é, A, E, A, » , ð, f, v, f, Š, f, f, ^, ð, f, v, f, Š, f, f, ^, f, X, f, e, f, [f, ^, f, X, f, E, f, B, f, “ , f, h, f, E, a, N, ®, µ, Ü, ·, B, f, f, f, b, f, N, ¾, è, ½, ð, “ , ó, Å, f, N, f, Š, f, b, f, N, ·, é, A, E, A, f, f, f, b, f, N, a, ¶, Å, ð, A, f, v, f, Š, f, f, ^, f, X, f, e, f, [f, ^, f, X, f, E, f, B, f, “ , f, h, f, E, a, ¶, —, 1, µ, Ü, ·, B

ŽQAE

PrintAgent, ð, ç, è, ç, è, É, <@ "\

PrintAgent® ,Æ,Í,H

PrintAgent,Í,AfRf“fsf...[f^,ÆfvfŠf“f^,Æ,Åi•ñ,đ’ŠCEÝ,ÉCEđŠ·,·,é,±,Æ,É,æ,èAfvfŠf“f^,đ,æ,è%ö“K,É,²—
~—p,ç,½,¾,¼,½,ß,lfVfXfef€,Å,·B

n ^óü,ìi□s□óμ,âfvfŠf“f^,ìó’Ô,ð%æ-Ê,Æ%¹□²,Å,“m,ç,¹,μ,Û,·B

n fAfvfŠfP□[fVf#f“,ðÄ·N“®,,·,é,±,Æ,È,□A^È’O,É^óü,μ,½fhfLf...f□f“fg,đ’Ç
%A^óü,μ,½,èA·”·ªŽw’è^óü,μ,½,è,·,é□A□Ä^óü@“\,đ’ñ<Ý,μ,Û,·B

n PrintAgent,ÍAflfbfgf□□[fNfvfŠf“f^,É,à’Í%ž,μ,Ä,ç,Û,·B—f,ê,½,Æ,±,è,É,·,éfvfŠf“f^,ìó’Ô,ª,í,©,ç,É,ç
,Æ,ç,±□—^,ì-â’è,đ’â·□,É%öðCE^,μ,Û,·Bflfbfgf□□[fN“à,ÉÜ’±,³,è,Ä,ç,éfvfŠf“f^,ìŽg—
p□óμ,ìŠm“F,âANEC□»,ìLANf{□[fh,âLANfAf_fvf^,ìÝ’è,ðs,È,ì,Û,·B

CE —,É,Ä,ç,Ä

,±,lfvtfgfEfffA,Æ,».,ì·i□»·”,ÉŠÖ,·,é^è·”,Û,½,í,·,x,Ä,ìCE —,í“ú-{"d<CŠ"Ž®%iŽĐ,É<A’®.,μ,Û,·B

Copyright © NEC Corporation 1996-1999
All Rights Reserved

-Æ□Ó,É,Ä,ç,Ä

“ú-{"d<CŠ"Ž®%iŽĐ,í□A—~—pŽÒ,ª,±,lfvtfgfEfffA,đ—~—p%Å“\
,É□ðCE□^ÉŠO,ìŠÄ<«□ðCE□,ì,à,Æ,É“®□,³,¹,½,½,ß,É□¶,¶,½·s—~%ov,ì□Ó”C,ð·%o,ç,Û,¹,ñ□B—~—pŽÒ,í□A- {f
ftfgfEfffA,ì^è·”,Û,½,í’S·”,ðfŠfo□[fXfgf“fWjjfAfŠf“fO,â<tfRf“fpcfç<,É,æ,èA%öð□íA%öü’ç,É,Ç,·,é,±
,Æ,í,Ä,«.,Û,¹,ñ□B,Û,½□A,±,lfvtfgfEfffA,É·íX,ð%Å,ì,½□ê□±,É,í“®□·Û□Ø,ìí□ÛŠO,Æ,È,è,Û,·B

Microsoft□AWindows□AWindows NT ,í·Ä□’ Microsoft ŽĐ,ì·Ä□’,”,æ,Ñ,»,ì¼,ì□’,É,“,é“o~^□x·W,Ä,·B
IBM□APC/AT,í·Ä□’International Business Machines Corporation,ì·Ä□’,”,æ,Ñ,»,ì¼,ì□’,É,“,é“o~^□x·W,Ä,·B
PrintAgent,í“ú-{"d<C(Š”),ì“o~^□x·W,Ä,·B

Windows 98,íMicrosoft Windows 98 operating system ,”,æ,Ñ Microsoft Windows 98 operating system Second
Edition,ì—ª,Ä,·B

Windows 95,íMicrosoft Windows 95 operating system,ì—ª,Ä,·B

Windows NT 3.51,íMicrosoft Windows NT Workstation operating system Version 3.51 ,”,æ,Ñ Microsoft Windows NT
Server operating system Version 3.51,ì—ª,Ä,·B

Windows NT 4.0,íMicrosoft Windows NT Workstation operating system Version 4.0 ,”,æ,Ñ Microsoft Windows NT
Server operating system Version 4.0,ì—ª,Ä,·B



PrintAgent,đ,²~—p,É,È,ê,éŠÂ««

PrintAgent,ÍAMicrosoft® Windows NT® 3.51i“ú–{CEê”Âjã,Â“@i,.,éftfgfEjFfA,Â,·QB

n “@ifRf“fsf...lf^

PC98-NXfvfš[fY,đšÜ,PIBM PC/ATCEÝŠ<@iDOS/V'í%ž<@j,Ü,½,ÍPC-9800fvfš[fY

n “@i,n,r

Microsoft® Windows NT® Workstation 3.51i“ú–{CEê”Âj

Microsoft® Windows NT® Server 3.51i“ú–{CEê”Âj

PrintAgent,đ,²~—p,É,È,Á,Ä,ç,éRf“fsf...lf^,IOS,đ¼,IOS,ÉfAfbvfOfCE[fh,.,éÜ,É,ÍA,.,ç,©,¶,ßPrintAgent,đfAf“fCf“fXfg[fç,.,é•K—v,ª,.,è,Ü,·QB

OSfAfbvfOfCE[fhCEãÍA,»,IOS—p,ÌPrintAgent,đfCf“fXfg[fç,µ,Ä,¾,¾,çQB

n fRf“fsf...lf^,lfj,fš

,»,é,¼,é,IOS,ì“@iŠÂ««,Éç,¶,Ü,·QB

PrintAgent,đfNf%ofCfAf“fgjftj[fjofVfXfefÉ,Ä,²Žg—

p,ìê±Afvfš“fgftj[fo,É,Í64MfjofCf^Êã,lfj,fš,đ“Ü,µ%—p,³,é,é,±,Æ,đ,„,ß,µ,Ü,·QB

n fvfš“f^fCf“f^ftf[fX

PC-9800fvfš[fY,Áfvfš“f^,đf[fj<Ü'±,Ä,²~—p,É,È,éê±,É,ÍA36fsf“fpf%ofCEf<fCf“f^ftf[fX,ª•K—v,Ä,·B14fsf“fpf%ofCEf<fCf“f^ftf[fX,đ“ö,.,éPC-9800,âAPC-H98ASV-H98fvfš[fY,lfpf%ofCEf<fCf“f^ftf[fX,Ä,àPrintAgent,đ,²~—p,ç,½,¾,·,Ü,.,ªA—^,ì<@“\,đ,“Žg,ç,½,¾,·,È,ç,½,ßAfvfš“f^“YfCf“f^ftf[fXf{[fh]iPC-9801-94j,đRf“fsf...lf^,é'....,µ,Ä,²Žg—p,µ,Ä,ç,½,¾,.,±,Æ,đ,„,ß,ç,½,µ,Ü,·QB

n fvfš“f^fP[fuf<

PC-PRCA-01, PC-CA205,Ü,½,Í“™•iPC98-NXfvfš[fY,đšÜ,PIBM PC/ATCEÝŠ<@j

PC-CA202, PC-CA204,Ü,½,Í“™•iNEC PC-9800fvfš[fYj

n f}fEfx

,²Žg—p,đ,„,ß,ç,½,µ,Ü,·QB

n ftfEj“fh

PSW,Ä%²qfjfbfZ[fW,É,æ,éfvfš“f^,ìó'Ó'É'm<@“\,đ,²~—p,É,È,è,½,çê±,É•K—v,Ä,·QB,²~—p,É,ÍA,“Žg,ç,ìWindows,É'í%ž,µ,½PCM[Ä¶,ª%Ä“\,ÉftfEj“fh<@“\,ª•K—v,É,È,è,Ü,·QB,“Žg,ç,lfRf“fsf...lf^,É,±,ì<@“\,ª,È,çê±,ÍAPCM[Ä¶,ª%Ä“\,ÉftfEj“fhf{[fh,âftfEj“fhj[fh,đ,²~—p^Ó,·¾,¾,çQB

n flfbfgf[fN

PrintAgent,ÍAflfbfgf[fNã,ÄWindows 98/95, Windows NT,Ä:α—L,³,é,Ä,ç,éPrintAgent'í%žfvfš“f^,âALANf{[fh]iLANfAf_fvf^j,đ“'....,µflfbfgf[fN,É¼ÜÜ'±,³,é,½PrintAgent'í%žfvfš“f^,É'í,µ,Ä,à,²~—p,ç,½,¾,·,Ü,·Bflfbfgf[fN,đ%î,µ,ÄPrintAgent'í%žfvfš“f^,đ,²~—p,É,È,éê±,É,ÍA,“Žg,ç,lfRf“fsf...lf^,ìWindows,Ä—p,Ä,«,éTCP/IPfvfjfgfRfç,É'í%ž,µ,½flfbfgf[fNfAf_fvf^f{[fh]^j[fh,È,Ç,ª•K—v,Ä,·QB,»,ì¼Aflfbfgf[fNfP[fuf<,È,Ç,à•K—v,É,È,è,Ü,·QB

flfbfgf[fN,É¼ÜÜ'±,³,é,½fvfš“f^,Æ'o•ûCEü'ÉjM,.,é,½,ß,É,ÍANECP/IP Printing System(Windows 98/95),Ü,½,ÍNEC Network Port(Windows NT),ªóüj[fjg,Æ,µ,ÄŽw'è,³,é,Ä,ç,éê±,ì,Ý,²~—p,É,È,è,Ü,·QB^óüj[fjg,Æ,µ,Ä,±,é,ç^ÈŠO,lfj[fjg]iDLC[ALPR,È,Çj,đ,“Žg,ç,É,É,éê±,É,ÍAPrintAgent,đfAf“fCf“fXfg[fç,µ,Ä,²~—p,¾,¾,çQB

,²~—p^Ó

n fvfš“f^,ìóüüæ,ªLPT1iLPT2, LPT3j,lfvfš“f^,ÆLPTN1iLPTN2,

PrintAgent,ì□V,μ,ϕ<@”

PrintAgent,ì<@”\,Í,±,¿,ϕ,ð,²—,3/4,³,ϕ□B

PrintAgent,ì,ϕ,ë,ϕ,ë,È<@”\

PrintAgent,ì,ç,ë,ç,ë,È<@"\

PrintAgent,À,í□A^È%º,ì<@"\,ð,Žg,ç,ç,½,¾,¯,Ü,·□B

n fvfŠf“f^fXfe□[f^fXfEfBf“fhfE

fvfŠf“f^fXfe□[f^fXfEfBf“fhfE,í□A^óüŠJŽn,â□I—¹□A—
pŽt□Ø,ê□A“dCE¹OFF,È,Ç,ìfvfŠf“f^,ì□ó‘Ô,ðŽèCE³,ìfpfjRf“,É%ºæ-È,â%º¹□º,É,æ,èŠÄŽ<,·,é,±
,Æ,ª,À,«,Ü,·□B

n fŠfvfŠf“fg

fŠfvfŠf“fg<@"\,í□A,·,À,É^óü,µ,½fhfLf...f□f“fg,ðfAfvfŠfP□[fVfjf“,ì□Ä<N“® ,ð,·,é,±,Æ,È,‘Ç
%ºÀ^óü,µ,½,è□A•“ªŽw’è^óü,µ,½,è,·,é□A□À^óü<@"\,ð’ñ<ÿ,µ,Ü,·□B

n fvfŠf“f^Ž<“®□Ø’Ö

^óü,µ,æ,ª,Æ,µ,½fvfŠf“f^,ª^óü‘t,â—pŽt□Ø,è,È,Ç,¾,Á,½,è,µ,½□è□#□A,·,®,ÉŽg—p%ºÀ“\
,É‘¼,ìfvfŠf“f^,ÉŽ<“®“I,É□Ø,è‘Ö,ì,À^óü,ðŽÀ□s,·,é,±,Æ,ª,À,«,Ü,·□B

n Web PrintAgent

fCf“f^□[f]fbjgfu%ºfEfU,ÀfvfŠf“f^,ì□ó<µ,ðŠm“F,·,é,±,Æ,ª,À,«,Ü,·□B

n fŠf.□[fgfp]f<

fŠf.□[fgfp]f<,À,í□A]fbjgfu□□[fNfvfŠf“f^□Af□□[fj]f<fvfŠf“f^,É‘í,µ□AfvfŠf“f^,ì‘€□]fp]f<,À□s,ì,é,ì,Æ,Ü,Ú“
-“™,ìŠeŽí□Ý‘è‘I,ð“Ç,Ý□ž,Ý□A,Ü,½□A□Ý‘è‘I,ì□‘,«□ž,Ý,ðfRf“fsf...□[f^□ä,©,ç□s,ª,±,Æ,ª,À,«,Ü,·□B

,²’□^Ó

n ,Žg,ç,É,È,À,Á,ç,éfvfŠf“f^<@Ží,É,æ,À,À□A,²—~—p,É,È,é,é<@"\,ª^Ü,È,è,Ü,·□B□Ü,µ,ç<@"\,ì□à-
¾,í□Aft□[fU□[fYf}fjf...fAf<,©fwf<fv,ð,²ŽQ□Æ,,¾,¾,ç□B

n fvfŠf“f^Ž<“®□Ø’Ö,ð,²—~—p,É,È,é,É,í□AWindows 98/95,©Windows NT
4.0,À□AfvfŠf“fgfT□[fo,Æ,µ,ÀfOf<□[fvfvfŠf“f^,ð□i□-,·,é•K—v,ª, ,è,Ü,·□BfOf<□[fvfvfŠf“f^,ì□i□-•û-
@,É,Á,ç,À,í□AfvfŠf“f^,ìft□[fU□[fYf}fjf...fAf<,ð,²—~—,É,È,é,©fwf<fv,ð,²ŽQ□Æ,,¾,¾,ç□B

n Web PrintAgent,ð,²—~—p,É,È,é,É,í□AWindows 98/95,©Windows NT 4.0,À□AfvfŠf“fgfT□[fo,ÉWeb
PrintAgent,ðfCf“fXfg□[f<,·,é•K—v,ª, ,è,Ü,·□B□Ü,µ,,í□AfvfŠf“f^,ìft□[fU□[fYf}fjf...fAf<,ð,²—~
,É,È,é,©fwf<fv,ð,²ŽQ□Æ,,¾,¾,ç□B

PrintAgent, ĩ<N“®

PrintAgent, ĩWindows NT 3.51fġOfġf“Žž,ÉŽ©“®“l,É—š,žġă,ă,èġPrintAgentfAfCfRf“,ă•\Ž!,ă,ê,Û,·ġB

n flfbfgfġġ[fN<ġ—LfvfŠf“f^,đ,²—~—p,ġġġġġAġTġġ[fo,Æ,È,éfRf“fsf...ġġ[f^,ÆfNf%ofCfAf“fg,Æ,È,éfRf“fsf...
ġġ[f^,ġ—¼•û,ĂPrintAgent,ăfCf“fXfgġġ[f<,ă,Ě,ġ,é•K—v,ă, ,è,Û,·ġB

n PrintAgent,ă<N“®,μ,Ă,ġ,È,ġġġġġ,ġġAġ,đfNfŠfġfN,·,é,©ġġmfvfġġOf%ofġf}ġġġfWffġġġġmfvfŠf“f^<@Ž/-
¼ġn,ġ’t,ġġAġmPrintAgentfVfXfefġ<N“®ġn,đf_fuf<fNfŠfġfN,·,é,±,Æ,Ă<N“®,Ă,«,Û,·ġB

n PrintAgent,ġ<@“\,đ,²—~—p,É,È,éġġġġ,ÉġPrintAgent,ăŽ©“®“l,É<N“®,·,é,±,Æ,ă, ,è,Û,·ġB

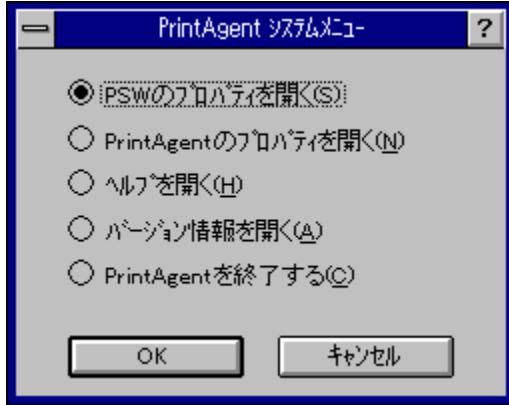
fġf“fg

n PrintAgent,ă•sġġġġġ—¹,μ,½ġġġġġ,ġġAŽŸ,ġġ€—Ú,đŽQġÆ,μ,Ă,,¾,ă,ġġB

[PrintAgent,ă<N“®,μ,Ă,ġ,È,ġ](#)

PrintAgentVfXfef€f[]fjf...[]

PSW,lfvf[]fpfefB,ðŠJ,ç,½,è,èAPrintAgent,lfvf[]fpfefB,ðŠJ,ç,½,è,è,é,±,Æ,ª,Å,«,Ü,-,B
,ðfNfŠfbfN,è,é,©,A[]mfvf[]fOf%of€f}fI[]fWff[]n[]mfvfŠf“f^<@Ži-¼n,l't,l[]mPrintAgentVfXfef€f[]fjf...
[]n,ðf_fuf<fNfŠfbfN,è,é,ÆŠJ,,±,Æ,ª,Å,«,Ü,-,B
,²—,É,È,è,½,ç[]€-Ú,ðfNfŠfbfN,µ,Ä,,¾,³,ç[]B



ŠÖ~A[]€-Ú

[PSW.lfvf\[\]fpfefB](#)

[PrintAgent.lfvf\[\]fpfefB](#)

[PrintAgent,l\[\]l-¹](#)

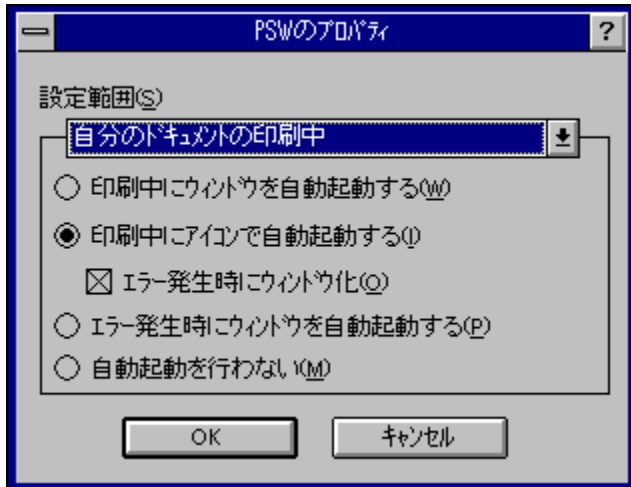
PSW,lfvf[]pfefB

PSW,lfvf[]pfefB,Å,í[]AfvfŠf“f^fXfe[]f^fXfEfBf“fhfE[]iPSW[],iŽ““@·N“@,ì[]Ý’è,δ[]s,!,Ü,·[]BPrintAgentfAfCfRf“δ[][]fNfŠfbfN,μ,Ä·Ž!,³,ê,é[]f[]f...[][,©,ç[]mPSW,lfvf[]pfefB[]n,δfNfŠfbfN,·,é,±,Æ,ÅŠ],,±,Æ,ª,Å,«,Ü,·[]B

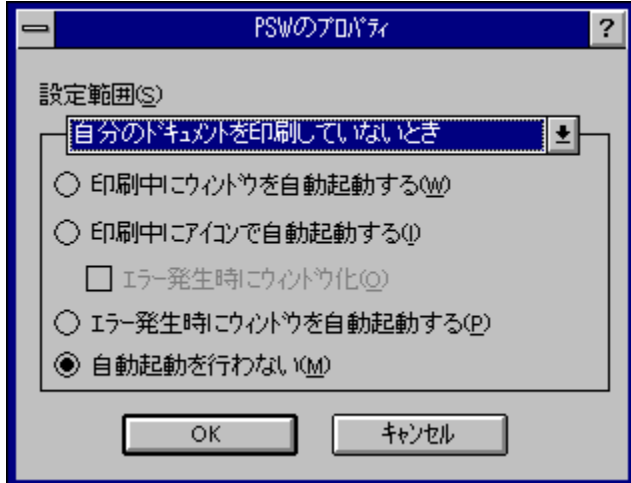
·í[]X,ì·K—v,ª,È,ç[]é[]#,í,»,ì,Ü,Ü,ì[]Ý’è,Å,“Žg,ç,,¾,¾,ç[]B

,²—,É,È,è,½,ç[]€—Ü,δfNfŠfbfN,μ,Ä,,¾,¾,ç[]B

□mŽ©·ª,ìfhfLf...f[]f“fg,ì^ó[]ü^t[]n,δ^l^ð,μ,½[]é[]#



□mŽ©·ª,ìfhfLf...f[]f“fg,δ^ó[]ü,μ,Ä,ç,È,ç,Æ,«[]n,δ^l^ð,μ,½[]é[]#



f[]f“fg

n PSW,lfvf[]pfefB,Å[]Ý’è,μ,½“à—e,ìft[]fU,²,Æ,È·Ü’¶,³,ê[]A,»,ìfRf“fsf...[]f^,É[]Ú’±,³,ê,Ä,ç,é,·,x,Ä,ìPrintAgent’í%žfvfŠf“f^,É<π’È,Å,·[]B

n ~A’±^ó[]ü,ì^r^t,Å,ì[]Ý’è,í—LCEø,È,È,è,Ü,¹,ñ[]B[]Ý’è,μ,½“à—e,í[]AŽÝ%ñPSW<N“@Žž,©,ç—LCEø,È,È,è,Ü,·[]B

n []Ý’è’í’í,Å□mŽ©·ª,ìfhfLf...f[]f“fg,δ^ó[]ü,μ,Ä,ç,È,ç,Æ,«[]n,ª^l^ð,³,ê,Ä,ç,é,Æ,«,ì[]Ý’è[]€—Ü,í[]AfvfŠf“f^,δŽÅ[]Ü,ÉŠç—[],μ,Ä,ç,é“A’è,ìfRf“fsf...[]f^,È,ç,Å,²—~—p,È,È,é,Æ·Ö—~,Å,·[]B

,²^ó

n , Žg, ç, É, È, Á, Ä, ç, éfvfŠf“f^, É, æ, Á, Ä, í□A□Ý’è”í^í, ì□mŽ©•ª, ìfhfLf... f□f“fg, ð^ó□ü, µ, Ä, ç, È, ç, Æ, «□n, í, ²—~—
p, É, È, é, È, ç□ê□‡,ª, , è, Ü, ·□B, Žg, ç, É, È, Á, Ä, ç, éfRf“fsf... □[f^, É—{□€—Ú, É’í%ž, µ, Ä, ç
, éfvfŠf“f^, ìPrintAgent,ªfCf“fXfg□[f<,ª, Ä, ç, é□ê□‡, ì□mŽ©•ª, ìfhfLf... f□f“fg, ð^ó□ü, µ, Ä, ç, È, ç, Æ, «□n, ì□€—
Ú, í’í’ð%ž\, É, È, è, Ü, ·,ª□A’í%ž, µ, Ä, ç, È, çfvfŠf“f^, É’í, µ, Ä, í□Ý’è, µ, ½□€—Ú, í—³Ž<,ª, è□A□mŽ©•ª, ìfhfLf...
f□f“fg, ì^ó□ú’+□n, ì, Ý, ²—~—p, ç, ½, ¾, ̄, Ü, ·□B□Ú, µ,, ì□AfvfŠf“f^, ìft□[fU□[fYf}fjf... fAf<, ð, ²—~—
, É, È, é, ©□A, Žg, ç, É, È, Á, Ä, ç, éfvfŠf“f^, ìPSW, ìfwf<fv, ð, ²ŽQ□Æ,, ¾,ª, ç□B

n flfbfgf□□[fN<α—LfvfŠf“f^, ð, ²Žg—p, ì□ê□‡□Aft□[fofRf“fsf... □[f^, ìOS,ªWindows 98/95□Afnf
%ofCfAf“fgfRf“fsf... □[f^, ìOS,ªWindows NT, ì, Æ, «, ì□Afnf%ofCfAf“fgfRf“fsf... □[f^, É, ̄, ç
, ÄŽ©“®<N“®, ·, é□Ý’è, É, È, Á, Ä, ç, Ä, àPSW,ªŽ©“®<N“®, µ, È, ç□A, Ü, ½, ìfof<□[fvfvfŠf“f^—pPSW, ì^ó□ü□|—
¹’É’m,ª•Ž|,ª, è, È, ç□ê□‡,ª, , è, Ü, ·□Bfnf%ofCfAf“fgfRf“fsf...
□[f^, ð□Ä<N“®, ·, é, ©□AfofOflf“, µ’¼, ·, Æ□³í, ÉŽ©“®<N“®, ·, é, æ, α, É, È, è, Ü, ·□B

n fof<□[fvfvfŠf“f^, ðflfbfgf□□[fN<α—LfvfŠf“f^, Æ, µ, Ä, ²Žg—p, µ, Ä, ç, Ä□Aft□[fofRf“fsf... □[f^, ìOS,ªWindows
98/95, ì□ê□‡□Aft□[fofRf“fsf... □[f^, É, ̄, ç, ÄŽ©“ª, ìfhfLf... f□f“fg, ð^ó□ü, µ, Ä, ç, È, ç
, Æ, «Ž©“®<N“®, µ, È, ç□Ý’è, É, È, Á, Ä, ç, Ä, à□A’¼, ìft□[fU, ìfhfLf...
f□f“fg^ó□ü, Æfof<□[fv, É’®, ·, éçĀ□X, ìfvfŠf“f^, ìPSW,ªŽ©“®<N“®, ·, é□ê□‡,ª, , è, Ü, ·□B

PSW,ìŽ©“®<N“®,ìŸ’è”í’í,đ’í’đ,μ,Û,·□BŸ’è”í’í,Å’í’đ,³,ê,½,»,ê,¼,ê,ìfP□[fX,É,“,̄,éPSW,ìŽ©“®<N“®,ì•û-
©,đ’í’đ,μ,Û,·□B

,²’Ÿ^Ó

- n ,“Žg,ç,É,È,Á,Ä,ç,éfvfŠf“f^,É,æ,Á,Ä,í□AŸ’è”í’í,ì□mŽ©•²,ìfhfLf...f□f“fg,đ^ó□ü,μ,Ä,ç,È,ç,Æ,«□n,í,²—~—
p,É,È,è,È,ç□ê□‡,², ,è,Û,·□B,“Žg,ç,É,È,Á,Ä,ç,éfrf“fsf...□[f^,É-{□€-Ú,É’í%ž,μ,Ä,ç
,éfvfŠf“f^,ìPrintAgent,²fCf“fXfg□[f<,³,ê,Ä,ç,é□ê□‡,ì□mŽ©•²,ìfhfLf...f□f“fg,đ^ó□ü,μ,Ä,ç,È,ç,Æ,«□n,ì□€-
Ú,í’í’đ%ž,μ,Ä,ç,È,è,Û,·,²□A’í%ž,μ,Ä,ç,È,çfvfŠf“f^,É’í,μ,Ä,íŸ’è,μ,½□€-Ú,í-³Ž<,³,ê□A□mŽ©•²,ìfhfLf...
f□f“fg,ì^ó□ü’+□n,ì,Ÿ,²—~—p,ç,½,¾,̄,Û,·□B□Û,μ,í□AfvfŠf“f^,ìft□[fU□[fYf}fjf...fAf<,đ,²—
,É,È,é,©□A,“Žg,ç,É,È,Á,Ä,ç,éfvfŠf“f^,ìPSW,ìfwf<fv,đ,²ŽQ□Æ,,¾,¾,ç□B
- n flfbfgf□□[fN<α—LfvfŠf“f^,đ,²Žg—p,ì□ê□‡□Aft□[fofRf“fsf...□[f^,ìOS,²Windows 98/95□Afnf
%ofCfAf“fgfRf“fsf...□[f^,ìOS,²Windows NT,ì,Æ,«,ì□Afnf%ofCfAf“fgfRf“fsf...□[f^,É,“,ç
,ÄŽ©“®<N“®,·,éŸ’è,É,È,Á,Ä,ç,Ä,àPSW,²Ž©“®<N“®,μ,È,ç□A,Û,½,ìfOf<□[fvfvfŠf“f^—pPSW,ì^ó□ü□|—
¹’É’m,²•Žì,³,ê,È,ç□ê□‡,², ,è,Û,·□Bfnf%ofCfAf“fgfRf“fsf...
□[f^,đ□Ä<N“®,·,é,©□Aft□fofif“,μ¹⁄₄,·,Æ□³í,ÉŽ©“®<N“®,·,é,æ,α,É,È,è,Û,·□B
- n fOf<□[fvfvfŠf“f^,đflfbfgf□□[fN<α—LfvfŠf“f^,Æ,μ,Ä,²Žg—p,μ,Ä,ç,Ä□Aft□[fofRf“fsf...□[f^,ìOS,²Windows
98/95,ì□ê□‡□Aft□[fofRf“fsf...□[f^,É,“,ç,ÄŽ©•²,ìfhfLf...f□f“fg,đ^ó□ü,μ,Ä,ç,È,ç
,Æ,«Ž©“®<N“®,μ,È,çŸ’è,É,È,Á,Ä,ç,Ä,à□A¹⁄₄,ìft□[fU,ìfhfLf...
f□f“fg^ó□ü,ÅfOf<□[fv,É’®,·,éÆÅ□X,ìfvfŠf“f^,ìPSW,²Ž©“®<N“®,·,é□ê□‡,², ,è,Û,·□B

□mŽ©•ª,ìfhfLf...f□f“fg,ì^óü’t□n,ì,Æ,«

PrintAgent’Í%žfvfŠf“f^,É’í,μ,ÄŽ©•ª,ì^óüfhfLf...f□f“fg,ð’—
□M,μžn,β,½,Æ,«□APSW,ðŽ©“@“I,ÉfEfBf“fhfE□ó’Ô,Å<N“@,μ,Û,·□B

□mŽ©•ª,ìfhfLf...f□f“fg,ð^óü,μ,Ä,ç,È,ç,Æ,«□n,ì,Æ,«

PrintAgent’Í%žfvfŠf“f^,É’í,μ,ÄŽ©•ª,ìfhfLf...f□f“fg^ÈŠO,ìfhfLf...f□f“fg,ª’—
□M,³,êžn,β,½,Æ,«□APSW,ðŽ©“@“I,ÉfEfBf“fhfE□ó’Ô,Å<N“@,μ,Û,·□B

n fXfv□[f<Š]žn,ìžž“_„ÄfGf%□[,ª“□¶,μ,Ä,ç,é,Æ,«,í□A,½,¾,¿,ÉfEfBf“fhfE•\Ž!,μ,Û,·□B

n ft□[fU,ª^óü,μ,½,·,x,Ä,ì^óüfhfLf...f□f“fg,É,Ä,ç,Ä□A^óü,ª□I—¹□A,à,μ,,í□A^óü,ª%½,ç,©,ì—□—
R,É,æ,è’tŽ~³,ê,½□ê□‡,ÉfEfBf“fhfE,ðŽ©“@“I,É□I—¹,μ,Û,·□B

,²’□^Ó

n fT□[fo,ð%oi,³,,ÉLANf{□[fh□iLANfAf_fvf^□j,ðŽg—p,μ,Ä,ç,é□é□‡,í□AŽ©•ª,ìfhfLf...
f□f“fg^ÈŠO,ì^óü,ª□s,í,ê,Ä,àŽ©“@<N“@,μ,Û,¹,ñ□B

PrintAgent'Í%žfvfŠf“f^,É'Í,μ,ÄŽ©•ª,ì^óüfhfLj...f“fg,đ'—
M,μŽn,β,½,Æ,«APSW,đŽ©“®“I,ÉfEfBf“fhfEó'Ô,Â<N“®,μ,Û,·B
n fXfv[f<ŠJŽn,ìŽŽ“_ÄfGf%o[l,ª“¶,μ,Ä,ç,é,Æ,«,ÍA,½,¾,¿,ÉfEfBf“fhfE•Ž!,μ,Û,·B
n ft[fU,ª^óü,μ,½,·,x,Ä,ì^óüfhfLj...f“fg,É,Â,ç,ÄA^óü,ª—¹A,à,μ,,ÍA^óü,ª%½,ç,©,ì—
R,É,æ,è'tŽ~,³,è,½é¶,ÉfEfBf“fhfE,đŽ©“®“I,É—¹,μ,Û,·B

,²'í^ó

n fT[fó,đ%î,³,,ÉLANf{[fh[iLANfAf_fvf^j,đŽg—p,μ,Ä,ç,éé¶,ÍAŽ©•ª,ìfhfLj...
f“fg^ÈŠO,ì^óü,ª[s,í,è,Ä,àŽ©“®<N“®,μ,Û,¹,ñB

PrintAgent'Í%žfvfŠf“f^,É'Í,μ,ÄŽ©•ª,ìfhfLf...f[]“fg^ÈŠO,ìfhfLf...f[]“fg,ª'—
[]M,³,êŽn,ß,½,Æ,«[]APSW,ðŽ©“@“I,ÉfEfBf“fhfE[]ó'Ô,Â<N“@,μ,Û,·[]B
n fXfv[]f<ŠJŽn,ìŽŽ“_ÄfGf%[][,ª“[]¶,μ,Ä,ç,é,Æ,«,Í[]A,½,¾,¿,ÈfEfBf“fhfE•\Ž!,μ,Û,·[]B
n ft[]fU,ª^ó[]ü,μ,½,·,×,Ä,ì^ó[]üfhfLf...f[]“fg,É,Â,ç,Ä[]A^ó[]ü,ª[]—¹[]A,à,μ,,Í[]A^ó[]ü,ª%½,ç,©,ì—[]—
R,É,æ,è'tŽ~,³,ê,½[]é[]¶,ÉfEfBf“fhfE,ðŽ©“@“I,É[]—¹,μ,Û,·[]B

,²'[]^Ó

n fT[]f[fo,ð%ò!,³,,ÉLANf{[]f[]iLANfAf_fvf^[]j,ðŽg—p,μ,Ä,ç,é[]é[]¶,Í[]AŽ©•ª,ìfhfLf...
f[]“fg^ÈŠO,ì^ó[]ü,ª[]s,í,é,Ä,àŽ©“@<N“@,μ,Û,¹,ñ[]B

□mŽ©•ª,lfhfLf...f□f“fg,ì´ó□ù´t□n,ìPSW,ì“®□ì,©□A□mŽ©•ª,lfhfLf...f□f“fg,ð´ó□ü,µ,Ä,ç,È,ç
,Æ,«□n,ì“®□ì,©,ð´ì´ð,µ,Ü,·□B

,²´□´Ó

- n ,´Žg,ç,È,È,Á,Ä,ç,éfvfŠf“f^,É,æ,Á,Ä,í□A□Ý`è“í´í,ì□mŽ©•ª,lfhfLf...f□f“fg,ð´ó□ü,µ,Ä,ç,È,ç,Æ,«□n,ì²—~—
p,É,È,è,È,ç□é□‡,ª, ,è,Ü,·□B,´Žg,ç,È,È,Á,Ä,ç,éfrf“fsf...□[f^,É-{}□€-Ú,É´í%ož,µ,Ä,ç
,éfvfŠf“f^,ìPrintAgent,ªfCf“fXfg□[f<³,è,Ä,ç,é□é□‡,ì□mŽ©•ª,lfhfLf...f□f“fg,ð´ó□ü,µ,Ä,ç,È,ç,Æ,«□n,ì□€-
Ú,í´ì´ð%oÄ“\,É,È,è,Ü,·,ª□A´í%ož,µ,Ä,ç,È,çfvfŠf“f^,É´í,µ,Ä,í□Ý`è,µ,½□€-Ú,ì-³Ž<³,è□A□mŽ©•ª,lfhfLf...
f□f“fg,ì´ó□ù´t□n,ì,Ý,²—~—p,ç,½,¾,´,Ü,·□B□Ü,µ,í□AfvfŠf“f^,ìft□[fU□[fYf}fjf...fAf<ð,²—
,É,È,é,©□A,´Žg,ç,È,È,Á,Ä,ç,éfvfŠf“f^,ìPSW,ìfwf<fv,ð,²ŽQ□Æ,,¾,¾,ç□B
- n flfbfgf□□[fN<ª—LfvfŠf“f^,ð,²Žg—p,ì□é□‡□Aft□[fofRf“fsf...□[f^,ìOS,ªWindows 98/95□Afnf
%ofCfAf“fgfRf“fsf...□[f^,ìOS,ªWindows NT,ì,Æ,«,ì□Afnf%ofCfAf“fgfRf“fsf...□[f^,É,´,ç
,ÄŽ©“®<N“®,·,é□Ý`è,É,È,Á,Ä,ç,Ä,àPSW,ªŽ©“®<N“®,µ,È,ç□A,Ü,½,ìfof<□[fvfŠf“f^—pPSW,ì´ó□ü□ì—
¹´É´m,ª•Žì,³,è,È,ç□é□‡,ª, ,è,Ü,·□Bfnf%ofCfAf“fgfRf“fsf...
□[f^,ð□Ä<N“®,·,é,©□Afof□fj“f“,µ¹⁄,·,Æ□³í,ÉŽ©“®<N“®,·,é,æ,ª,É,È,è,Ü,·□B
- n fofo<□[fvfŠf“f^,ðflfbfgf□□[fN<ª—LfvfŠf“f^,Æ,µ,Ä,²Žg—p,µ,Ä,ç,Ä□Aft□[fofRf“fsf...□[f^,ìOS,ªWindows
98/95,ì□é□‡□Aft□[fofRf“fsf...□[f^,É,´,ç,ÄŽ©•ª,lfhfLf...f□f“fg,ð´ó□ü,µ,Ä,ç,È,ç
,Æ,«Ž©“®<N“®,µ,È,ç□Ý`è,É,È,Á,Ä,ç,Ä,à□A¹⁄,ìft□[fU,ìhfLf...
f□f“fg^ó□ü,Àfofo<□[fv,É´®,·,éçÆÄ□X,ìfvfŠf“f^,ìPSW,ªŽ©“®<N“®,·,é□é□‡,ª, ,è,Ü,·□B

□mŽ©•ª,lfhfLf...f□f“fg,ì^óü’t□n,ì,Æ,«

PrintAgent‘í%žfvfŠf“f^,É‘í,μ,ÄŽ©•ª,ì^óüfhfLf...f□f“fg,đ’—

□M,μžn,β,½,Æ,«□APSW,đŽ©“®“I,ÉfAfCfRf“□ó‘Ô,Å<N“® ,μ,Ü,·□B

□mŽ©•ª,lfhfLf...f□f“fg,đ^óü,μ,Ä,ç,È,ç,Æ,«□n,ì,Æ,«

PrintAgent‘í%žfvfŠf“f^,É‘í,μ,ÄŽ©•ª,lfhfLf...f□f“fg^ÈŠO,lfhfLf...f□f“fg,ª’—

□M,ª,êžn,β,½,Æ,«□APSW,đŽ©“®“I,ÉfAfCfRf“□ó‘Ô,Å<N“® ,μ,Ü,·□B

n fXfv□[f<Š]žn,ìžž“_ ,ÄfGf%□[,ª”□¶,μ,Ä,ç,é,Æ,«,í□AfEfBf“fhfE•\Ž!,¹, ,□A,½,¾,¿,ÉfAfCfRf“•\Ž!,μ,Ü,·□B

n ft□[fU,ª^óü,μ,½,·,x,Ä,ì^óüfhfLf...f□f“fg,É,Ä,ç,Ä□A^óü,ª□I—¹□A,à,μ,,Í□A^óü,ª%½,ç,©,ì—□—

R,É,æ,è’tŽ~ ,ª,ê,½□ê□‡,ÉfAfCfRf“ ,đŽ©“®“I,É□I—¹,μ,Ü,·□B

,²’□^Ó

n fT□[fo,đ%oi,ª, ,ÉLANf{□[fh□iLANfAf_fvf^□j,đŽg—p,μ,Ä,ç,é□ê□‡,Í□AŽ©•ª,lfhfLf...

f□f“fg^ÈŠO,ì^óü,ª□s,í,ê,Ä,àŽ©“®<N“® ,μ,Ü,¹,ñ□B

PrintAgent'Í%žfvfŠf“f^,É'Í,μ,ÄŽ©•ª,ì^óüfhfLj...f“fg,đ'—
M,μŽn,β,½,Æ,«APSW,đŽ©“®“I,ÉfAfCfRf“ó'Ô,Å<N“®,μ,Ü,·B
n fXfv[f<ŠJŽn,ìŽŽ“_ÄfGf%o[l,ª“¶,μ,Ä,ç,é,Æ,«,ÍAfEfBf“fhfE•\Ž!,¹,.A,½,¾,¿,ÉfAfCfRf“•\Ž!,μ,Ü,·B
n ft[fU,ª^óü,μ,½,·,x,Ä,ì^óüfhfLj...f“fg,É,Â,ç,ÄA^óü,ª|—¹A,à,μ,,ÍA^óü,ª%½,ç,©,ì—
R,É,æ,è'tŽ~,³,è,½é¶,ÉfAfCfRf“,đŽ©“®“I,É|—¹,μ,Ü,·B

,²'í^ó

n fT[fó,đ%oi,³,,ÉLANf{[fh[iLANfAf_fvf^j,đŽg—p,μ,Ä,ç,éé¶,ÍAŽ©•ª,ìfhfLj...
f“fg^ÈŠO,ì^óü,ª[s,í,é,Ä,àŽ©“®<N“®,μ,Ü,¹,ñB

PrintAgent'Í%žfvfŠf“f^,É'Í,μ,ÄŽ©•ª,ìfhfLj...f“fg^ÈŠO,ìfhfLj...f“fg,ª'—
□M,³,êžn,ß,½,Æ,«□APSW,ðŽ©“®“l,ÉfAfCfRf“□óÔ,Å<N“® ,μ,Û,·□B

n fXfv□[f<ŠJžn,ìŽž“_ ,ÅfGf%□□[,ª“□¶,μ,Ä,ç,é,Æ,« ,Í□AfEfBf“fhfE•\Žì,¹, ,□A,½,¾,¿,¿,ÉfAfCfRf“•\Žì,μ,Û,·□B

n ft□[fU,ª^óü,μ,½,·,x,Ä,ì^óüfhfLj...f“fg,É,Ä,ç,Ä□A^óü,ª□—¹□A,à,μ,,Í□A^óü,ª%½,ç,©,ì—□—
R,É,æ,è'tž~ ,³,ê,½□é□‡,ÉfAfCfRf“ ,ðŽ©“®“l,É□—¹,μ,Û,·□B

,²'□^Ó

n fT□[fo,ð%î,³, , ,ÉLANf{□[fh□iLANfAf_fvf^□j,ðžg—p,μ,Ä,ç,é□é□‡,Í□AŽ©•ª,ìfhfLj...
f“fg^ÈŠO,ì^óü,ª□s,í,é,Ä,àŽ©“®<N“® ,μ,Û,¹,ñ□B

□mŽ©•ª,ìfhfLf...f□f“fg,ì^óü’t□n,ì,Æ,«

PrintAgent’Í%žfvfŠf“f^,É’Í,μ,ÄŽ©•ª,ì^óüfhfLf...f□f“fg,ð’—

□M,μžn,β□APSW,ðŽ©“®“I,ÉfAfcRf“□ó’Ô,Å<N“® ,μ,½,Æ,«,É□AfvfŠf“f^,ÅfGf%□[”-

□¶Žž,ÉŽ©“®“I,ÉfEfBf“fhfE•\Ž!,É□Ø,è’Ö,í,é,©,Ç,α,©,ð’I’ð,Å,«,Ü,·□B

□mŽ©•ª,ìfhfLf...f□f“fg,ð^óü,μ,Ä,ç,È,ç,Æ,«□n,ì,Æ,«

PrintAgent’Í%žfvfŠf“f^,É’Í,μ,ÄŽ©•ª,ìfhfLf..f□f“fg^ÈŠO,ìfhfLf...f□f“fg,ª’—

□M,³,èžn,β□APSW,ðŽ©“®“I,ÉfAfcRf“□ó’Ô,Å<N“® ,μ,½,Æ,«,É□AfvfŠf“f^,ÅfGf%□[”-

□¶Žž,ÉŽ©“®“I,ÉfEfBf“fhfE•\Ž!,É□Ø,è’Ö,í,é,©,Ç,α,©,ð’I’ð,Å,«,Ü,·□B

n fGf%□[”□¶Žž,ÉŽ©“®“I,ÉfEfBf“fhfE•\Ž!,É□Ø,è’Ö,í,é,Ü,·□B

n fGf%□[,ª%ð□œ,³,è,½□ê□‡,Í□AŽ©“®“I,ÉfAfcRf“□ó’Ô,É-β,è,Ü,·□B

PrintAgent'Í%žfvfŠf“f^,É'Í,μ,ÄŽ©•ª,ì^óüfhfLf...f“fg,đ'—
M,μŽn,βAPSW,đŽ©“®“l,ÉfAfCfRf“ó'Ô,Å<N“®,μ,½,Æ,«,ÉAfvfŠf“f^,ÅfGf%o[“-
qŽž,ÉŽ©“®“l,ÉfEfBf“fhfE•\Žì,ÉØ,è'Ö,í,é,©,Ç,α,©,đ'ì'đ,Å,«,Ü,·B
n fGf%o[“qŽž,ÉŽ©“®“l,ÉfEfBf“fhfE•\Žì,ÉØ,è'Ö,í,è,Ü,·B
n fGf%o[,ª%ðœ,³,è,½ê‡,íAZ©“®“l,ÉfAfCfRf“ó'Ô,É-β,è,Ü,·B

PrintAgent'Í%žfvfŠf“f^,É'Í,μ,ÄŽ©•ª,ìfhfLj...f[]f“fg^ÈŠO,ìfhfLj...f[]f“fg,ª'—
[]M,³,êžn,β[]APSW,ðž©“®“l,ÉfAfCfRf“[]ó'Ô,Å<N“®,μ,½,Æ,«,É[]AfvfŠf“f^,ÅfGf%[]l”-
[]¶žž,Éž©“®“l,ÉfEfBf“fhfE•\Žì,É[]Ø,è'Ö,í,é,©,Ç,κ,©,ð'ì'ð,Å,«,Ü,·[]B
n fGf%[]l”[]¶žž,Éž©“®“l,ÉfEfBf“fhfE•\Žì,É[]Ø,è'Ö,í,è,Ü,·[]B
n fGf%[]l,ª%ð[]œ,³,è,½[]ê[]‡,í[]AŽ©“®“l,ÉfAfCfRf“[]ó'Ô,É-β,è,Ü,·[]B

□mŽ©•ª,ìfhfLf...f□f“fg,ì^ó□ù’t□n,ì,Æ,«

Ž©•ª,ìfhfLf...f□f“fg,ì^ó□ù’t,É□AfGf%□□[,ª”□¶,μ,½,Æ,«,ÉŽ©“®“l,ÉfEfBf“fhfE□ó’Ô,Å<N“®,μ,Û,·□B

□mŽ©•ª,ìfhfLf...f□f“fg,ð^ó□ù,μ,Ä,ç,È,ç,Æ,«□n,ì,Æ,«

Ž©•ª,ìfhfLf...f□f“fg^ÈŠO,ìfhfLf...f□f“fg^ó□ù’t,É□AfGf%□□[,ª”-

□¶,μ,½,Æ,«,ÉŽ©“®“l,ÉfEfBf“fhfE□ó’Ô,Å<N“®,μ,Û,·□B

n fGf%□□[,ª%□ð□œ,³,è,½□ê□‡,í□AŽ©“®“l,ÉfEfBf“fhfE,ð□l—¹,μ,Û,·□B

Ž©•ª, ìfhfLj...f[]“fg, ì^ó[]ù’t, É[]AfGf%[][,ª”[]¶, μ, ½, Æ, «, ÉŽ©“®“l, ÉfEfBf“fhfE[]ó’Ô, Å<N“®, μ, Ü, ·[]B
n fGf%[][,ª%ø[]œ,ª, è, ½[]ê[]‡, Í[]AŽ©“®“l, ÉfEfBf“fhfE, ø[]l—¹, μ, Ü, ·[]B

Ž © •ª, ìfhfLj...f[]“fg^ÈŠO, ìfhfLj...f[]“fg^óù’t, É[]AfGf%[][,ª”-

[]¶, μ, ½, Æ, «, ÉŽ © “ @ “ I, ÉfEfBf“fhfE[]ó’Ô, Å<N“ @, μ, Ü, ·[]B

n fGf%[][,ª%øð[]œ,³,è,½[]ê[]‡, Í[]AŽ © “ @ “ I, ÉfEfBf“fhfE, ð[]I—¹, μ, Ü, ·[]B

n PSW, ì[]m’Ê’mCE`Ž @, ìfvf[]fpfefB[]n, É[]m[]í, ÉfXfe[][f^fX, ðŽæ“¾[]n, ì[]Ý’è,ª, ,é<@Ží, Å, ìf`fFfbfN, ð, Å, ¯, Ä, -
,¾,³,ç[]B

□mŽ©•ª,lfhLf...f□f“fg,ì^ó□ü't□n,ì,Æ,«
PSW,ìŽ©“@<N“@,đ□s,ç,Û,¹,ň□B
□mŽ©•ª,lfhLf...f□f“fg,đ^ó□ü,μ,Ä,ç,È,ç,Æ,«□n,ì,Æ,«
PSW,ìŽ©“@<N“@,đ□s,ç,Û,¹,ň□B

PSW,đ<N“@,·,é,Æ,«,í□APrintAgentfAfcRf“,đ%oEfNfŠfbfN,μ,ÄfvfŠf“f^,đ'l'đ,·,é,©□A□mfvf□fOf
%of€f}f□[fWff□n□□mfvfŠf“f^<@Ží-¼□n,ì't,ì□A□mfvfŠf“f^fXfe□[f^fXfEfBf“fhfE□n,đf_fuf<fNfŠfbfN,μ,Ä,-
,¾,³,ç□B

PSW, iž © " ® < N " ® , đ □ s , ç , Ü , 1 , ñ □ B

PSW, đ < N " ® , , é , Æ , « , í □ A PrintAgent f Af Cf R f " , đ □ f N f Š f b f N , μ , Ä f v f Š f " f ^ , đ ' l ' đ , , é , © □ A □ m f X f ^ □ [f g □ n f □ f j f ...

□ [, © , ç □ m f v f □ f O f % o f € □ n □ □ m f v f Š f " f ^ < @ Ž í - ¼ □ n , ì ' t , ì □ A □ m f v f Š f " f ^ f X f e □ [f ^ f X f E f B f " f h f E □ n , đ f N f Š f b f N , μ , Ä , - , ¾ , ¾ , ç □ B

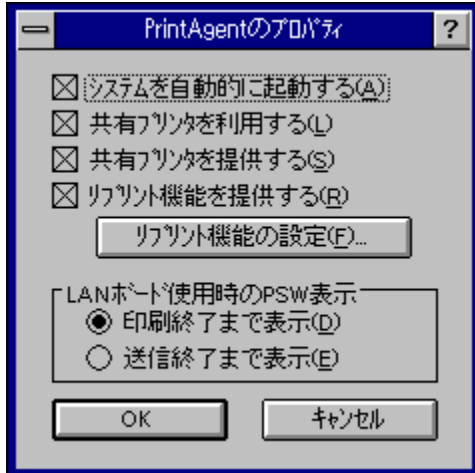
PSW, iž © " ® < N " ® , đ □ s , ç , Ü , 1 , ñ □ B

PSW, đ < N " ® , , é , Æ , « , í □ A PrintAgent f Af Cf R f " , đ □ f N f Š f b f N , μ , Ä f v f Š f " f ^ , đ ' l ' đ , , é , © □ A □ m f X f ^ □ [f g □ n f □ f j f ...

□ [, © , ç □ m f v f □ f O f % o f € □ n □ □ m f v f Š f " f ^ < @ Ž í - ¼ □ n , ì ' t , ì □ A □ m f v f Š f " f ^ f X f e □ [f ^ f X f E f B f " f h f E □ n , đ f N f Š f b f N , μ , Ä , - , ¾ , ¾ , ç □ B

PrintAgentのインストール

PrintAgentのインストールは、以下の手順で行います。
1. PrintAgentのインストールメディアを準備する。
2. インストールメディアを起動し、インストールを実行する。
3. インストールが完了したら、再起動を行う。



インストール

1. インストールメディアを起動し、インストールを実行する。
2. インストールが完了したら、再起動を行う。
3. インストールが完了したら、再起動を行う。

ft□[fUf□fOfif“Žž,ÉPrintAgent,đŽ©“®“l,É<N“®,μ,Ü,·□B
n □Ý'è,μ,½“à—e,í□AŽŸ%oň,ìft□[fUf□fOfif“Žž,©,ç—LÆø,Æ,È,è,Ü,·□B
n ,±,ì□€-Ú,ì□Ý'è“à—e,ìft□[fU,²,Æ,É•Û'¶,³,é,Ü,·□B

fifbfjgf[] [fN<α—LfvfŠf“f^, Å[]APSW, a—~—p, Å, «, é, æ, x, É, È, è, Ü, ·[]B
n , ±, ì[]€-Ú, ì[]Ý'è“à—e, Íf+[] [fU, ², Æ, É•Ú'¶, ³, è, Ü, ·[]B

, ²'[]^Ó

n -{[]€-Ú, ãf`fFfbfN, ³, è, Ä, ç, È, ç[]ê[]‡, Í[]A[]fifbfjgf[] [fN<α—LfvfŠf“f^, É'Í, µPSW, a, ²—~—
p, É, È, è, Ü, ¹, ñ[]B, Ü, ½[]A, “Žg, ç, É, È, Á, Ä, ç, éfRf“fsf...[] [f^, ÉTCP/IPfvf[]fgfRf<, ãfCf“fXfg[] [f<, ³, è, Ä, ç
, È, ç[]ê[]‡, É, Í[]A-{[]€-Ú, Í, ²—~—p, É, È, è, Ü, ¹, ñ[]B

Ž © • a, ĩRf"fsf... [f^, ÉÚ' ±, ³, ê, Ä, ç, éPrintAgent'í%žvfšf" f^, ðfĳbfĳf [fN<α—Lfvfšf" f^, Æ, μ, Ä'¼, ĩRf"fsf...
 [f^, É'í, μ, Ä'ñ<Ÿ, μ, Ä, ç, éêê‡, ÉA'¼, ĩRf"fsf... [f^ [ä, ĩPrintAgent, É'í, μ, ÄA<α—
Lfvfšf" f^, É'í, ·, éî•ñ, Ö, ĩAfNfZfX, ð<-‰Ä, μ, Ü, ·B

n , ±, ĩ€-Ú, ðf fFfbfN, ·, é, ÆA'¼, ĩRf"fsf... [f^ [ä, ÅPSW, a, ²—~—p, É, È, ê, Ü, ·B

n , ±, ĩ€-Ú, íA, ±, ĩRf"fsf... [f^, ĩ'Sft [fU, É—LCEø, Å, ·B, ±, ĩ€-Ú, ð•ïX, Å, <, é, ĩ, ĩfvfšf" f^, ĩAfNfZfXCE , ÅAdm
inistratorsCE CEÄ, ðŽ, Åft [fU, ĩ, Ý, Å, ·B

, ² [^ Ó

n -{ [€-Ú, a^ fFfbfN, ³, ê, Ä, ç, éêê‡ Afĳbfĳf [fN<α—Lfvfšf" f^, ð'ñ<Ÿ, ·, éfRf"fsf...
 [f^, ĩWindows, ĩfOfĳf"‰æ-É•Ž!'+ [fU, a^ fOfĳf" , μ, Ä, ç, É, çŠÖj, Å, àPrintAgent, ĩ<@"\
 , ·, é, ½, B A'¼, ĩRf"fsf... [f^, ©, ç, àAfNfZfX, a‰Ä" \, Å, ·B

n , Žg, ç, É, È, Ä, Ä, ç, éRf"fsf... [f^, ÉTCP/IPfvfĳfĳfĳf, a^ Cf" fXfg [f<, ³, ê, Ä, ç, È, çêê‡, É, íA-{ [€-Ú, í, ²—~—
p, É, È, ê, Ü, ¹, ñB

Ž©•ª,ìfRf“fsf...[]f^,ÉÚ±³,ê,Ä,ç,éPrintAgent‘í%žvfšf“f^,Åfšvfšf“fg<@“\,ðŽg—p,μ,Û,·□B
n ,±,ì□€-Ú,ì□Ý’è“à—e,í□A,±,ìfRf“fsf...[]f^,ì’Sft□[fU,É—LCEø,Å,·□B,±,ì□€-Ú,í□AAdministrators,ìCE CEÀ,ª, ,
éft□[fU,ì,Ý□Ý’è•ì□X%oÅ“\,Å,·□BCE CEÀ,ª,È,çft□[fU,Å,íOfCE□[É,È,èŽg—p,Å,«,,È,Ä,Ä,ç,Û,·□B

,²’□^ó

n -{□€-Ú,ìŽ©•ª,ìfRf“fsf...[]f^,É¼□Ú□Ú±³,ê,Ä,ç,évfšf“f^,É’í,·,é□Ý’è,Å, ,è□Afbfšf□□[fN<α—
Lfvfšf“f^,É’í,·,é,à,ì,Å,í, ,è,Û,¹,ñ□B

n -{□€-Ú,ªf ffbfN,³,ê,Ä,ç,Ä,à□Afbfšf□□[fN<α—Lfvfšf“f^,Ö,ì^ó□ü,Å,íT□[fo,ì□Ý’è,ª—
LCEø,Æ,È,è,Û,·□Bfšvfšf“fg<@“\,ðfbfšf□□[fN<α—Lfvfšf“f^,ÅŽg—
p,μ,½,ç□é□‡,í□AfT□[fo□ã,ì□Ý’è,ð,²Sm“F,,¾,³,ç□B

n ,“Žg,ç,É,È,Ä,Ä,ç,évfšf“f^,É,æ,Á,Ä,í□A-{□€-Ú,í,²—~—p,É,È,è,È,ç□é□‡,ª, ,è,Û,·□B,“Žg,ç,É,È,Ä,Ä,ç
,éRf“fsf...[]f^,É,±,ì□€-Ú,É’í%ž,μ,Ä,ç,évfšf“f^,ìPrintAgent,ªfCf“fXfg□[f<,³,ê,Ä,ç,é□é□‡,í’ð%oÅ“\
,É,È,è,Û,·,ª□A’í%ž,μ,Ä,ç,È,çvfšf“f^,É’í,μ,Ä,í□Ý’è,μ,½□€-Ú,í-³Ž<,³,è,Û,·□B□Ú,μ,-
,í□Afvfšf“f^,ìft□[fU□[fYf}ffj...fAf<,ð,²—,É,È,é,©□A,“Žg,ç,É,È,Ä,Ä,ç,évfšf“f^,ìPSW,ìfwf<fv,ð,²ŽQ□Æ,-
,¾,³,ç□B

fšvfšf“fg,ÉŠÖ,μ,ÄAfXfv□[f<ftf@fCf<,ì§CEÀ•û-@AfXfv□[f<ftf@fCf<,đŠi”[.,.éftfHf<f_,đ□Ý’è,μ,Ü,·□B
n ,±,ì□€-Ú,ì□Ý’è“à—e,í□A,±,ìfRf“fsf...□[f^,ì’Sft□[fU,É—LCEø,Å,·□B,±,ì□€-Ú,ì□AAdministrators,ìCE CEÀ,a, ,
éft□[fU,ì,Ý□Ý’è•ì□X%oÅ“\,Å,·□B

,²’□^Ó

n ,“Žg,ç,É,È,Á,Ä,ç,évfšf“f^,É,æ,Á,Ä,í□A-{□€-Ú,í,²—~—p,É,È,è,È,ç□é□#,a, ,è,Ü,·□B,“Žg,ç,É,È,Á,Ä,ç
,éRf“fsf...□[f^,É,±,ì□€-Ú,É’í%ož,μ,Ä,ç,évfšf“f^,ìPrintAgent,afCf“fXfg□[f<,³,è,Ä,ç,é□é□#,í’í’đ%oÅ“\
,É,È,è,Ü,·,ª□A’í%ož,μ,Ä,ç,È,çvfšf“f^,É’í,μ,Ä,í□Ý’è,μ,½□€-Ú,í-³Ž<,³,è,Ü,·□B□Ú,μ,-
,ìAfvfšf“f^,ìft□[fU□[fYf}ffj...fAf<,đ,²—,É,È,é,©□A,“Žg,ç,É,È,Á,Ä,ç,évfšf“f^,ìPSW,ìfwf<fv,đ,²ŽQ□Æ,-
,³/4,³,ç□B

LANf{[fh]iLANfAf_fvf^[]jŽg—pŽž,ìPSW,ì•\Žì,đ^óüü|—¹,Ü,Å•\Žì,É,·,é,©'—M|—¹,Ü,Å•\
Žì,É,·,é,©,đŸ'è,μ,Ü,·B

n -{[€-Ú,íLANf{[fh'¼CE<,ìfvfŠf“f^,É'í,μ,Ä—LCEø,Å, ,è[]Aft[]foCEo—R,ÅLANf{[fhCEo—R,Å[]Ú'±
,³,è,½fvfŠf“f^,É'í,μ,Ä,í[]Aft[]fo[]ä,Å,ìŸ'è,^a—LCEø,Æ,É,è,Ü,·B

n ,“Žg,ç,É,È,Á,Ä,ç,éfvfŠf“f^,É,æ,Á,Ä,í[]A-{[€-Ú,í,²—~—p,É,È,è,È,ç[]è[]#,è,è,Ü,·B,“Žg,ç,É,È,Á,Ä,ç
,éRf“fsf...[]f^,É,±,ì[]€-Ú,É'í%ž,μ,Ä,ç,éfvfŠf“f^,ìPrintAgent,èCf“fXfg[]f<,³,è,Á,ç,é[]è[]#,í'ð%oÁ\
,É,È,è,Ü,·,è[]A'í%ž,μ,Ä,ç,È,çfvfŠf“f^,É'í,μ,Ä,í[]Ÿ'è,μ,½[]€-Ú,í-³Ž<,³,è,Ü,·B[]Ú,μ,-
,í[]AfvfŠf“f^,ìft[]fU[]fYf}ffj...fAf<,ð,²—,É,È,é,©[]A,“Žg,ç,É,È,Á,Ä,ç,éfvfŠf“f^,ìPSW,ìfwf<fv,ð,²ŽQ[]Æ,-
,³/₄,³,çB

LANf{[fh[LANfAf_fvf^[]j,Æ,ì'É[]M,ð[]A^ó[]ü[]«"\\—D[]æ,Å[]s,ç,Û,·[]B, ,éfRf"fsf...[]f^,ì^ó[]üfhfLf...
f[]f"fg"rŽt†,É'¼,ìfRf"fsf...[]f^,ì^ó[]üfhfLf...f[]f"fg,ð'—[]M,Å,«,é,æ,x,É,È,è[]A•j[]",ì^ó[]üfhfLf...
f[]f"fg,â'¶[]Y,·,é,Æ,«,É[]A,·,x,Ä,ìfhfLf...f[]f"fg,ì^ó[]üš@—¹,â'¬,È,è,Û,·[]B

,²'[]^[]Ó

- n ,±,ì[]Ý'è,É,·,é,Æ[]APSW,Å,ì^ó[]ü'tfhfLf...f[]f"fg[]î•ñ,ì-¼[][]A[]Š—L[]AŠ@—¹fy[]fW,í·\
Ž,ì,è, ,[]A"rŽt†fAjjf[]fVf†",à[]s,í,è,Û,¹,ñ[]B,Û,½[]m^ó[]ü[]Ü[]×[]nf_fCfAf[]fOf{fbfNfX,ì[]m[]ó'Ô[]n,í,»,ìfhfLf
...f[]f"fg,â^ó[]ü't,Ä, ,Ä,Ä,à[]u^ó[]ü'Ò[]v,Æ·\Ž,ì,è,Û,·[]B
- n ,Žg,ç,É,È,Ä,Ä,ç,éfvfŠf"f^,É,æ,Ä,Ä,í[]A-{[]€-Û,í,²~—p,É,È,è,È,ç[]è[]‡,â, ,è,Û,·[]B, Žg,ç,É,È,Ä,Ä,ç
,éfRf"fsf...[]f^,É,±,ì[]€-Û,É'í%ž,µ,Ä,ç,éfvfŠf"f^,ìPrintAgent,âfCf"fxfg[]fç,è,Ä,ç,é[]è[]‡,í'í'ð%Å"\
,É,È,è,Û,·,â[]A'í%ž,µ,Ä,ç,È,çfvfŠf"f^,É'í,µ,Ä,í[]Ý'è,µ,½[]€-Û,í-³Ž<,è,Û,·[]B[]Ü,µ,-
,í[]AfvfŠf"f^,ìf†[]fU[]fYf}fj...fAfc,ð,²—,É,È,é,©[]A, Žg,ç,É,È,Ä,Ä,ç,éfvfŠf"f^,ìPSW,ìfwfçfv,ð,²ŽQ[]Æ,-
,¾,¾,ç[]B

LANf{[fh]iLANfAf_fvf^[]j,Æ,ì'É[]M,ð[]AfXfe[]f^fXŽæ“¾—D[]æ,Å[]s,ç,Û,·[]BPSW,Å,ì•\
Ž,í[]Af[][]fjfvfšf“f^,âfjfbfgf[]fN<α—Lfvfšf“f^,ðŽg—p,μ,½[]ê[]#,Æ'S,“~,¶,É,È,è[]A^óü'tfhfLf...
f[]f“fg[]î•ñ,ì-¼[]ì[]A[]Š—L[]AŠ@—¹fy[]fW,²•\
Ž,³,è[]A“rŽtfAfj[]fVf#“,à[]s,í,è,Û,·[]B,Û,½[]m^óüüÚ×[]nf_fCfAf[]fOf{fbfNfX,ì[]m[]ó'Ô[]n,à[]³Šm,É•\
Ž,³,è,Û,·[]B

,²'[]^Ó

n []m'—[]M[]—¹,Û,Å•\Ž,í[]n,æ,è[]A^óüü,ìŠ@—¹,²x,,É,é[]ê[]#,³, ,è,Û,·[]B
n ,“Žg,ç,É,È,Á,Ä,ç,éfvfšf“f^,É,æ,Á,Ä,í[]A—{[]€—Ú,Í,²~—p,É,È,è,È,ç[]ê[]#,³, ,è,Û,·[]B,“Žg,ç,É,È,Á,Ä,ç
,éRf“fsf...[]f^,É,±,ì[]€—Ú,É'í%ž,μ,Ä,ç,éfvfšf“f^,ìPrintAgent,³fCf“fXfg[]f<,³,è,Ä,ç,é[]ê[]#,í'í'ð%oÅ“\
,É,È,è,Û,·,³[]A'í%ž,μ,Ä,ç,È,çfvfšf“f^,É'í,μ,Ä,í[]Y'è,μ,½[]€—Ú,í-³Ž<,³,è,Û,·[]B[]Ú,μ,-
,í[]Afvfšf“f^,ìf[]fU[]fYf}fj...fAf<,ð,²—,É,È,é,©[]A,“Žg,ç,É,È,Á,Ä,ç,éfvfšf“f^,ìPSW,ìfwf<fv,ð,²ŽQ[]Æ,-
,¾,³,ç[]B

PrintAgent, ðl—¹

PrintAgentfAfCfRf“, ðfNfŠfbfN, µ, Ä•\Ži, ³, ê, éfjff... [l, ©, çm•Ä, ¶, éñ, ðfNfŠfbfN, ·, é, ±, Æ, ÅAPrintAgent, ðl—¹, ·, é, ±, Æ, Å, Å, «, Ü, ·B

ŽQÆ

PrintAgent, ðN“@

PrintAgent, ðN“@, µ, Ä, ç, È, çê±, ð@“\

PrintAgent, ÉŠÖ, ·, éNT, ðfT[fxfX, ðN“@A’âŽ~

fšfvfšf“fg<@”\,É,Â,ç,Ä

fšfvfšf“fg<@”\,íA,·,Å,É^óü,μ,½fhfLf...f“fg,ðfAfvfšfP[fVf†f“,ìÄ<N“@,ð,·,é,±,Æ,È,‘Ç
%oÁ^óü,μ,½,èA·”·Žw’è^óü,μ,½,è,·,éAÄ^óü<@”\,ð’ñ<ÿ,μ,Ü,·Bfšfvfšf“fg,ð—
LCEø,É,·,é,ÆA^óüfhfLf...f“fg,³fn[fhfffBfXfNã,É·Ú‘¶,³,é,é,ì,ÅA%½“x,Å,àÄ^óü,Å,«,Ü,·B

,±,ñ,È,Æ,«,É·Ö—~ ,É<@”\,Å,·B

n ·i“”“””,ð^óü,μ,½,ç
,Æ,«,É,P·” ,¼,~ŽŽ,μ^óü,ðs,çA^óüCE<%oÉ,ðŠm”F,μ,Ä,©,çŽc,è,ì·””,ì^óü,ðs,æê#B
n ^ê“x^óü,ðs,Á,ÄfAfvfšfP[fVf†f“,ð|—¹,μ,Ä,μ,Ü,Á,½,³ACEã,Å’Ç%oÁ^óü,·,é·K—v,³o,Ä,«,½ê#B

ŠÖ~A€-Ú

[fšfvfšf“fg<@”\,ð’ñ<ÿ,·,é](#)

[fšfvfšf“fg<@”\,ìY’è](#)

fvfŠf“f^fhf%ofCfofwf·fv

fvfŠf“fgf}f[]fWff, ©, ç, ²—~—p, É, È, è, ½, çfvfŠf“f^, ð'! 'ð, μ□A, » , ±, ©, çŽQ□Æ, μ, Ä, , ¾, ³, ç□B

fšfvfšf“fg<@”\,ì□Ý’è

, ±, ±, Å, íšfvfšf“fg<@”\, ì□Ý’è, ð□s, ï, Ü, ·□B□mPrintAgent, ìfvf□fpfefB□n, ©, ç□mfšfvfšf“fg<@”\
ì□Ý’è□nf{f^f”, ðfNfšfbfN, ·, é, ±, Æ, Åšj, ·, ±, Æ, ð, Å, <, Ü, ·□B
²—, É, È, è, ½, ç□€-Ü, ðfNfšfbfN, μ, Å, ·, ¾, ³, ç□B

リアリト機能の設定

スプールファイルの制限方法

- ドキュメント数(N) 1 個 (1 - 100)
- 有効期限(T) 24 時間 (1 - 120)
- ディスク領域(Q) 10 MB (1 - 空き領域の 50%)

スプールファイルを格納するフォルダ

現在のフォルダ: C:\PrintAgent\Spool

空き領域 94 MB

fXfv[]f<ftj@fCf<,i•Ù'¶,ð[]sCEÀ,.,é•ù-@,ð[]Ý'è,μ,Ü,·[]B

n ^É%º,ì3,Â,ì[]€-Ú,Â[]A1,Â,Â,à[]ðCE[],É'B,.,é,ÆCEÃ,†^ó[]üfhfLf...f[]f“fg,©,ç[]#,É[]í[]œ,³,ê,Ü,·[]B

, ±, ì € - Ú, ð f` fFfbfN, ., é, Æ □ AfŠ fvfŠ f“fg, ì, ½, ß, Éfn □ [fhfffBfXfN, É • Û ‘ ¶, ³, ê, ½ ^ ó □ üfhfLf...
f□“fg, ì □”, ð fefLfXfgf{fbfNfX, Å □ Ý ‘ è, ³, ê, ½ ‘ l, ð ‘ ‘, ì, ½, Æ, «, É CE Æ, ç ^ ó □ üff □ [f ^, ©, ç □ ‡, É □ í □ œ, ³, ê, Û, . □ B
• Û ‘ ¶, ., é ^ ó □ üfhfLf... f□“fg, ì □”, í 1 □ ` 100 CE Æ, Å, . □ B

fqf“fg

n , ±, ì € - Ú, ð f` fFfbfN, µ, Æ, ç, È, ç □ é □ ‡ □ AfhfLf... f□“fg□”, í □ Å ‘ å □ i 100 CE Æ □ j, É, È, è, Û, . □ B

fXfv[]f<ftf@fCf<,đŠi"l,·,éftfHf<f_ìŸ'è,đ[]s,ç,Ü,·[]B

«»ŸŸ'è,³ê,Ä,ç,éfXfv[f<ftf@fCf<,đŠi"[.,.éftfHf<f_Ä,·B

«»ŸŸ'è,³ê,Ä,ç,éfXfv□[f<ftf@fCf<,ďŠi"[.,.éftfHf<f_`ì<ó.«—e—Ê,Å,·□B

fšfvfšf“fg, ì, ½, ß, É•Ù’¶,³,ê,Ä,ç,éfxfv[]f<ftf@fCf<,ð,·,×,Äí[]œ,μ,Ü,·[]B

fqf“fg

n ,±,ìf{f^f“,Í[]A ftfHf<f_Éfxfv[]f<ftf@fCf<,²-³,ç[]ê[]‡,Í-³Eø,É,È,Á,Ä,ç,Ü,·[]B

fXfv[]f<ftf@fCf<,đŠi”[.,.éftfHf<f_.,ì•ï[]X,đ[]s,ç,Ü,·[]B

,²’[]^Ó

n ‘í’đ,Å,«,éftfHf<f_.,íĀĀ’èfffBfXfN,ì,Ý,Ā[]Aflfbfgf[][]fN,âfŠf€[][]fuf<fhf%ofCfu,í‘í’đ,Å,«,Ü,¹,ñ[]B

fvfŠf“f^,ìfAfNfZfXŒ ,Æ,²—~—p,É,È,ê,éft□[fefBfŠfefB

,²Žg—p,É,È,Á,Ä,č,éfRf“fsf...□[f^,ìOS, fvfŠf“f^,ª¼□Ú,Â,È,ª,Á,Ä,č,éfRf“fsf...

□[f^,ìOS,âfvfŠf“f^,ìfAfNfZfXŒ ,É,æ,Á,Ä□AfvfŠf“f^fXfe□[f^fXfEfBf“fhfE□AfŠf.□[fgfpf|f<,ì,.,x,Ä,ì<@“\,ð,²—
—p,É,È,ê,È,č□ê□‡,ª, ,è,Ü,·□B

ŽQ□Æ

[fvfŠf“f^fXfe□\[f^fXfEfBf“fhfE,ìfZfLf...fŠfefB](#)

[fŠf.□\[fgfpf|f<,ìfZfLf...fŠfefB](#)

□Ý'è,ð—LŒø,É,μ□Af_fCfAf□fOf{fbfNfX,ð•Â,¶,Ü,·□B

□Ý'è,ð-³Œø,É,μ□Af_fCfAf□fOf{fbfNfX,ð•Â,¶,Ü,·□B

PrintAgent,lfwfv,đ•Žl,μ,Ü,·□B

f^fXfe[]f^fXfEfBf“fhfE,ìfvf[]fpfefB,đ•\
Ž,μ,Ü,·[]BfvfŠf“f^fXfe[]f^fXfEfBf“fhfE,ìŽ©“®<N“®,ì[]Ý’è,²[]s,ì,Ü,·[]B

PrintAgent,lfvf[]pfefB,ð•\Ži,μ,Ü,·[]BPrintAgent,ìŽ©“®<N“®,ìŸ’è,â[]APrintAgent,Å,lfjfbfgf[][]fN<¤—
LfvfŠf“f^,ì—~—p[]A’ñ<Ÿ,ìŸ’è,“,æ,ŃfŠfvfŠf“fg,ìŸ’è,È,Ç,ª[]s,ì,Ü,·[]B

PrintAgent, ĺfo [fWf†f“ □î•ñ,đ•\Žı,μ,Ü,·□B

PrintAgent, δ|⁻¹, μ, Ü, ·B

fšfXfg, ©, cfvfšf“f^fXfe□lf^fXfEfBj“fhfE, ìŸ'è'îŸ, Æ, È, éfvfšf“f^, ð'! 'ð, μ, Û, ·□B

f v f S f " f ^ f X f e [f ^ f X f E f B f " f h f E , ì ' î Ñ Ò , Æ , È , é f v f S f " f ^ , ð ' l ' ð , μ , Û , · Ñ B

fZfLf...fŠfefB

,²—,É,È,è,½,čfZfLf...fŠfefB,ìŽí—p,đNfŠfbfN,μ,Ä,,¾,³,č□B

{button ,JI(`Pan1.HLP',`IDH_PA_HIGH_SECURITYPSW2')} PSW,ìfZfLf...fŠfefB

{button ,JI(`Pan1.HLP',`IDH_PA_HIGH_SECURITYREPRINT')} fŠfvfŠf“fg,ìfZfLf...fŠfefB

fVfŠf“f^fXfe[]f^fXfEfBf“fhfE,lfZfLf...fŠfefB

^óüfhfLf...f[]f“fg’—M’t,lfAfhfLf...f[]f“fg,lf^èžž’âž~[]A[]ŠJ,“,æ,Ñ[]í[]œ,É,Ä,ç,Ä,lfZfLf...
fŠfefB,É,æ,Ä,ÄŠe[]ê[]‡,²,Æ,É[]A,²~—p,É,È,ê,é<@“\,ªCEÀ,ç,ê,Ä,ç,Ü,·[]B

PSW[]ã,©,ç,lfhfLf...f[]f“fg,lf^èžž’âž~[]A[]ŠJ,“,æ,Ñ[]í[]œ,lfí[]Ü,Æ,É,é,ì,í[]A’—M’t,lf^óüfhfLf...
f[]f“fg,ì,Ý,Ä,·[]B

%½,ê,ì[]ê[]‡,à[]AWindows NT,Ä,lfZfLf...fŠfefB,É,æ,èfhfLf...f[]f“fg,lf^èžž’âž~[]A[]ŠJ,í,Ä,«,Ü,¹,ñ[]B

‡@f[][]lfj[]fVfŠf“f^,lf^è[]‡,Ü,½,ÌSeŽìLANf{[]f[]h[]i[]LANfAf_fvf^[]j,ðCeo—R,μ,Ä^óüü,μ,Ä,ç,é[]ê[]‡
^É[]í[]AfhfLf...f[]f“fg,lfí[]œ,í,Ä,«,Ü,·(*1)[]B^èžž’âž~,“,æ,Ñ[]AŠJ,í,Ä,«,Ü,¹,ñ[]B

‡Aflfbfgf[][]fN<α—LfvfŠf“f^,lf^è[]‡

flfbfgf[][]fN<α—LfvfŠf“f^,ÄPSW,ð—~—p,·,é[]ê[]‡,É,í[]A,Ü,·fT[]f[]ofRf“fsf...[]f^‘α
,lfmPrintAgent,lfvf[]f[]pfefB[]n[][]m<α—LfvfŠf“f^,ð’ñ<ÿ,·,é[]nf fFfbfNf{fbfNfX,Æ[]AfNf
%ofCfAf“fgfRf“fsf...[]f^‘α,lfmPrintAgent,lfvf[]f[]pfefB[]n[][]m<α—LfvfŠf“f^,ð—~—
p,·,é[]nf fFfbfNf{fbfNfX,ª[]A,Æ,à,Éf fFfbfN,³,ê,Ä,ç,é,±,Æ,ª’O’ñ,Æ,È,è,Ü,·Bflfbfgf[][]fN<α—
LfvfŠf“f^,É,Ä,ç,ÄPSW,ð—~—p,·,é,Æ,«,í[]Aft[]f[]U,ªf[]f[]Of[]f“,μ,Ä,ç,éfnf%ofCfAf“fgfRf“fsf...
[]f^,ìOS,lfžì—p,É,©,©,í,ç,·[]AfvfŠf“f^,ª’¼[]Ü[]Ü±,³,ê,Ä,ç,éft[]f[]ofRf“fsf...[]f^,ìOS,lfžì—
p,É,æ,Ä,Ä[]AfZfLf...fŠfefB,lfžæ,è^μ,ç,ª·ì,í,è,Ü,·[]B

[]mfT[]f[]ofRf“fsf...[]f^,ìOS,ªWindows 98/95,lf^è[]‡n

fNf%ofCfAf“fgfRf“fsf...[]f^‘α
ž©·ª,lfhfLf...f[]f“fg,Éí,μ,Ä[]A[]í[]œ,Ä,«,Ü,·[]B^èžž’âž~[]A[]ŠJ,í,Ä,«,Ü,¹,ñ[]B
‘¼[]l,lfhfLf...f[]f“fg,Éí,μ,Ä[]A^èžž’âž~[]A[]ŠJ,“,æ,Ñ[]í[]œ,í,Ä,«,Ü,¹,ñ[]B
fT[]f[]ofRf“fsf...[]f^‘α
ž©·ª,lfhfLf...f[]f“fg,Éí,μ,Ä[]A^èžž’âž~[]A[]ŠJ,“,æ,Ñ[]í[]œ,ª,Ä,«,Ü,·[]B
‘¼[]l,lfhfLf...f[]f“fg,Éí,μ,Ä[]A^èžž’âž~[]A[]ŠJ,“,æ,Ñ[]í[]œ,ª,Ä,«,Ü,·[]B

[]mfT[]f[]ofRf“fsf...[]f^,ìOS,ªWindows NT,lf^è[]‡n

fNf%ofCfAf“fgfRf“fsf...[]f^‘α
ž©·ª,lfhfLf...f[]f“fg,Éí,μ,Ä[]A^É[]í[]A[]í[]œ,Ä,«,Ü,·[]i*1[]j[]B^èžž’âž~[]A[]ŠJ,í,Ä,«,Ü,¹,ñ[]B
‘¼[]l,lfhfLf...f[]f“fg,Éí,μ,Ä[]A^èžž’âž~[]A[]ŠJ,“,æ,Ñ[]í[]œ,í,Ä,«,Ü,¹,ñ[]i*2[]j[]B
fT[]f[]ofRf“fsf...[]f^‘α
ž©·ª,lfhfLf...f[]f“fg,Éí,μ,Ä[]A^É[]í[]A[]í[]œ,Ä,«,Ü,·[]i*1[]j[]B^èžž’âž~[]A[]ŠJ,í,Ä,«,Ü,¹,ñ[]B
‘¼[]l,lfhfLf...f[]f“fg,Éí,μ,Ä[]A^èžž’âž~[]A[]ŠJ,í,Ä,«,Ü,¹,ñ[]B[]í[]œ,É,Ä,ç
,Ä,lfvfŠf“f^,lfAfNfZfXCE ,É,æ,Ä,Ä^Ü,È,è,Ü,·[]B[]i*3[]j

*1^É[]í[]ACREATOR OWNER,lfAfNfZfXCE ,lfžì—p,ª[]A[]m·[]l’,lfŠÇ—[]n[]iWindows NT
3.51[]j[]A[]mfhfLf...f[]f“fg,lfŠÇ—[]n[]iWindows NT 4.0[]j,É,È,Ä,Ä,ç,é,ì,Äž©·ª,lfhfLf...
f[]f“fg,Éí,μ,Ä,í[]í[]œ%Ä“\,Ä,·[]BŠÇ—[]žÖ,È,ç,É,æ,Ä,ÄCREATOR OWNER,lfAfNfZfXCE ,lfžì—
p,ª[]A[]m^óüü[]n,É·[]X,³,ê,Ä,ç,é[]ê[]‡,í[]A[]í[]œ,Ä,«,Ü,¹,ñ[]B[]Ü,μ,í[]AWindows
NT,lfufvfŠf“f^,lfAfNfZfXCE ,lfwf<fv[]v,ð,²—,·,¾,³,ç[]B

*2ft[]f[]U,ª[]m·[]l’,lfŠÇ—[]n[]iWindows NT 3.51[]j[]A[]mfhfLf...f[]f“fg,lfŠÇ—[]n[]iWindows NT
4.0[]j,Ü,½,í[]mf[]f<fRf“fgf[][]f<[]n,lfvfŠf“f^,lfAfNfZfXCE ,ðž[],Ä,Ä,ç,Ä,à[]APSW[]ã,É,í[]A[]fNf
%ofCfAf“fgfRf“fsf...[]f^,©,ç,í’¼[]l,lf^óüfhfLf...
f[]f“fg,ð[]í[]œ,Ä,«,Ü,¹,ñ[]BfvfŠf“f^ftfHf<f_,©,ç,lfí[]œ,í%Ä“\,Ä,·[]B

*3ft[]fU,am•[]',iSÇ—[]n[]iWindows NT 3.51[]j[]A[]mfhfLj...f[]f“fg,iSÇ—[]n[]iWindows NT
4.0[]j,Ü,½,i[]mftf<fRf“fgf[][]f<[]n,lfvfSf“f^,lfAfNfZfXCE ,ðŽ,Á,Ä,ç,é,Æ,«,í[]A'¼[]l,lfhfLj...
f[]f“fg,ð[]í[]œ,Á,«,Ü,·[]BfvfSf“f^,lfAfNfZfXCE ,am^ó[]ü[]n,i[]ê[]#,í[]í[]œ,Á,«,Ü,¹,ñ[]B

fŠf, [fgfpflf<, lZfLf...fŠfefB

fŠf, [fgfpflf<, lY'è, l"Ç, Yžž, Y, A, X, V, É, Â, ç, Ä, Í, Še, ê, ð, ², Æ, É, A, ² — — p, É, È, è, é, @, "\, ¢, Ä, ç, è, Æ, Ü, ·, B
‡@f [fgfpflf<, lY'è, l"Ç, Yžž, Y, A, ç, Ä, Í, Še, Ž, Í, LANf, { [fh, i, LANf, Af, f, v, f, ^, j, ð, CEo — R, µ, Ä, ^, ó, ü, µ, Ä, ç, é, é, ê, ð
lY'è, l"Ç, Yžž, Y, Í, Ä, «, Ü, ·, B, X, V, É, Â, ç, Ä, Í, f, v, f, Š, f, ^, l, f, Af, N, f, Z, f, X, CE, É, æ, Á, Ä, ^, Ü, È, è, Ü, ·, i, *1, j, B
l, i, ê, ·, l, @, Ž, Í, Ä, Í, LANf, { [fh, ð, CEo — R, µ, Ä, ^, ó, ü, µ, Ä, ç, é, é, ê, ð, A, Y'è, l"Ç, Yžž, Y, l, o — ^, Ü, ¹, ñ, B, j

‡Af lfbfgf [fN<µ — LfvfŠf" f^, l, ê, ð

lfbfgf [fN<µ — LfvfŠf" f^, Ä, l, Šf, [fgfpflf<, l — — p, É, l, A, Ü, , f, T, [fofRf" fsf... [f^' µ
, l, m, Print, Agent, l, f, v, f, p, f, e, f, B, n, [m<µ — LfvfŠf" f^, ð' ñ, < Y, , é, n, f, f, F, b, f, N, f, {, f, b, f, N, f, X, Æ, A, f, N, f
%o, f, C, f, A, f, " f, g, f, R, f, " f, s, f, ... [f^' µ, l, m, Print, Agent, l, f, v, f, p, f, e, f, B, n, [m<µ — LfvfŠf" f^, ð — —
p, , é, n, f, f, F, b, f, N, f, {, f, b, f, N, f, X, ¢, A, Æ, à, É, f, f, F, b, f, N, ³, é, Ä, ç, é, ±, Æ, ¢, O' ñ, Æ, È, è, Ü, ·, B
%o, ½, è, l, ê, ð, à, A, f, N, f, %o, f, C, f, A, f, " f, g, f, R, f, " f, s, f, ... [f^, ©, ç, l, Z, f, L, f, ... f, Š, f, e, f, B, É, æ, è, Y'è, l, X, V, í, Ä, «, Ü, ¹, ñ, B

[mfT [fofRf" fsf... [f^, iOS, Windows 98/95, l, ê, ð, n

fNf%o, f, C, f, A, f, " f, g, f, R, f, " f, s, f, ... [f^' µ
lY'è, l"Ç, Yžž, Y, Í, Ä, «, Ü, ·, B, Y'è, l, X, V, í, Ä, «, Ü, ¹, ñ, B
f, T, [fofRf" fsf... [f^' µ
lY'è, l"Ç, Yžž, Y, A, X, V, ¢, Ä, «, Ü, ·, B

[mfT [fofRf" fsf... [f^, iOS, Windows NT, l, ê, ð, n

fNf%o, f, C, f, A, f, " f, g, f, R, f, " f, s, f, ... [f^' µ
lY'è, l"Ç, Yžž, Y, Í, Ä, «, Ü, ·, B, Y'è, l, X, V, í, Ä, «, Ü, ¹, ñ, B
f, T, [fofRf" fsf... [f^' µ
lY'è, l"Ç, Yžž, Y, Í, Ä, «, Ü, ·, B, X, V, É, Â, ç, Ä, Í, f, v, f, Š, f, ^, l, f, Af, N, f, Z, f, X, CE, É, æ, Á, Ä, ^, Ü, È, è, Ü, ·, i, *1, j, B

*1, f, T, [f, U, ¢, m, f, t, f, < f, R, f, " f, g, f, [f, < n, l, f, v, f, Š, f, ^, l, f, Af, N, f, Z, f, X, CE, , ð, Ž, Á, Ä, é, «, l, Y, A, f, Š, f, [fgfpflf<, l, Y'è, l, X, V, ¢, Ä, «, Ü, ·, B

, ², ^, Ó

n PC-98, f, v, f, Š, [f, Y, Ä, 14, f, s, f, " f, v, f, Š, f, ^, f, C, f, " f, ^, f, t, f, F, [f, X, ð, Ž, g — p, µ, Ä, f, v, f, Š, f, ^, ð, Ü, ±, µ, Ä, ç, é, é, ê, ð, à, APC-
H98, f, v, f, Š, [f, Y, Ä, { 'í' à' , l, f, v, f, Š, f, ^, f, C, f, " f, ^, f, t, f, F, [f, X, â, SV-H98-B01, f, v, f, Š, f, ^, ' [Y, f, { [fh, ð, Ž, g —
p, µ, Ä, f, v, f, Š, f, ^, ð, Ü, ±, µ, Ä, ç, é, é, ê, ð, É, l, A, f, T, [f, U, É, >, l, f, v, f, Š, f, ^, Ö, l, f, Af, N, f, Z, f, X, CE, , ¢, Ä, Ä, à, A, Y'è, l"Ç, Yžž, Y, Í, Ä,
«, Ü, ¹, ñ, B

fšfvfšf“fg,lfZfLf...fšfefB

‡@f□□lfjffvfvšf“f^,l□ê□‡,Ü,½,íŠeŽiLANf□{□fh□iLANfAf_fvf^□j,ðCeo—R,μ,Ä^ó□ü,μ,Ä,ç,é□ê□‡

fvf%ofCfx□lfqfXfv□lf<ftf@fCf<,l□AZ©•ª,lfRf“fsf...
□lf^,l□mPrintAgent,lfvf□fpfefB□n,ÄŸ’è,³,ê,½□ê□š,É•Ü’¶,³,ê,Ü,·□B□mPrintAgent,lfvf□fpfefB□n,l□
mfšfvfšf“fg<@\,ð’ñ<Ÿ,·,é□n□C□mfšfvfšf“fg<@\,l□Ÿ’è□n,l□Administrators,l□CE CEÀ,ª, ,éft□lfU,l,Ÿ•
l□X,Ä,«,Ü,·□B
PSW,l□mfšfvfšf“fg<@\nf_fCfAf□fo,Ä,l□A□m•¶□’,lšç—
□□n,Ü,½,l□mftf<fRf“fg□□lf<□n,lfvfšf“f^,lfAfNfZfXCE ,ðž□,Ä,Ä,ç,é□l,l,·,x,Ä,lft□lfU,lfhfLf...
f□f“fg,ªfšfXfgfAfbfv,³,ê,Ü,·□B,»,ê^ÉŠO,l□CE CEÀ,lft□lfU,lž©•ª,lfhfLf...
f□f“fg,l,Ÿ,ªfšfXfgfAfbfv,³,ê□A□m□š—LžÒ□n—“,l•žl,³,ê,Ü,¹,ñ□B

‡Aflfbfgf□□lfN<¤—Lfvfšf“f^,Ä^ó□ü,l□ê□‡

fvf%ofCfx□lfqfXfv□lf<ftf@fCf<,lft□lfofRf“fsf...
□lf^,l□mPrintAgent,lfvf□fpfefB□n,ÄŸ’è,³,ê,½□ê□š,É•Ü’¶,³,ê,Ü,·□Bšfvfšf“fg,l□Ÿ’è,l□Aft□lfofRf“fs
f...□lf^,l□mPrintAgent,lfvf□fpfefB□n,l□mfšfvfšf“fg<@\,ð’ñ<Ÿ,·,é□n□C□mfšfvfšf“fg<@\
,l□Ÿ’è□n,ª”½□of,³,ê,Ü,·□BfNf%ofCfAf“fgfRf“fsf...
□lf^,l□mPrintAgent,lfvf□fpfefB□n,l□mfšfvfšf“fg<@\,ð’ñ<Ÿ,·,é□n□C□mfšfvfšf“fg<@\,l□Ÿ’è□n,É,l
%oe<¿,μ,Ü,¹,ñ□Bft□lfofRf“fsf...□lf^,l□mPrintAgent,lfvf□fpfefB□n,l□mfšfvfšf“fg<@\
,ð’ñ<Ÿ,·,é□n□C□mfšfvfšf“fg<@\,l□Ÿ’è□nf{f^f“,l□A^É%º,l,æ,¤,Éft□lfofRf“fsf...
□lf^,l□OS,É,æ,Ä,Ä□ACE CEÀ,ª,È,çft□lfU,l□Ÿ’è,ð•l□X,Ä,«,È,ç□ê□‡,ª, ,è,Ü,·□B

□mfT□lfofRf“fsf...□lf^,l□OS,ªWindows 98/95,l□ê□‡□n

ft□lfofRf“fsf...□lf^□ä,l□mPrintAgent,lfvf□fpfefB□n,l□mfšfvfšf“fg<@\
,ð’ñ<Ÿ,·,é□n□C□mfšfvfšf“fg<@\,l□Ÿ’è□n,l□Aft□lfofRf“fsf...□lf^□ä,Ä,·,x,Ä,lft□lfU,ª•l□X,Ä,«,Ü,·□B

□mfT□lfofRf“fsf...□lf^,l□OS,ªWindows NT,l□ê□‡□n

ft□lfofRf“fsf...□lf^□ä,l□mPrintAgent,lfvf□fpfefB□n□l□mfšfvfšf“fg<@\
,ð’ñ<Ÿ,·,é□n□C□mfšfvfšf“fg<@\,l□Ÿ’è□nf{f^f“,l□Aft□lfofRf“fsf...□lf^□ä,ÄAdministrators,l□CE CEÀ,ª
, ,éft□lfU,l,Ÿ•l□X,Ä,«,Ü,·□BCE CEÀ,l,È,çft□lfU,l□AfofCE□[•žl,É,É,è,Ü,·□B

,²’□^Ó

n ft□lfofRf“fsf...□lf^,l□OS,ªCE CEÀ,ÉŠÖ,l,ç,·□Aflfbfgf□□lfN<¤—Lfvfšf“f^,É^ó□ü,l□ê□‡□Afnf

%ofCfAf“fgfRf“fsf...□lf^,lPSW,l□mfšfvfšf“fg<@\nf_fCfAf□fo,Ä,l□AZ©•ª,lfhfLf...

f□f“fg,l,ŸfšfXfgfAfbfv,³,ê,Ü,·□B□m□š—LžÒ□n—“,l•žl,³,ê,Ü,¹,ñ□B

n ,”žg,ç,É,È,Ä,Ä,ç,éfvšf“f^,É,æ,Ä,Ä,l□Ašfvfšf“fg<@\,ª,²—~—p,É,È,è,È,ç□ê□‡,ª, ,è,Ü,·□B□Ü,μ,-

,l□Ašfvšf“f^,lft□lfU□lfYf)ffj...fAç,ð,²—,É,È,é,©□A,žg,ç,É,È,Ä,Ä,ç,éfvšf“f^,lPSW,lfwf<fv,ð,žž□AE,-
,¾,¾,ç□B

^óüfjfo—í<@”\,É,Â,ç,Ä

^óüfjfo—í<@”\,Æ,íAflfbfgf[]fNŠÄ«»,Å•;í”fNf%ofCfAf“fg,©,ç^óü,ðs,æŠÄ««,É,“,ç
,ÄAfvfŠf“f^,²,Æ,Éft[]fU-¼A^óüfhfLf...f[]f“fg-¼A^óüfhfLf...f[]f“fg,²,Æ,í^óü-
‡”A^óüžž“™,í^óüfjfo,ðNTfT[]foã,İfn[]fhfffBfXfN,É<L%~“,·,é<@”\,Å,·B

n -{<@”\,İfT[]fX,Å’ñ<ÿ,³,éAPrintAgentfCf“fXfg[]f’¼Æã,İfT[]fX,ª’âž~,³,é,Ä,ç,Ü,·B-{<@”\,ð,²—
p,É,È,ééè‡,íA[]mfRf“fgf[]f<fpf[]n[]mfT[]fX[]n,©,çA“NEC Printing Information
Logger”,ðŠJŽn,µ,Ä,,¾,¾,çB

n []mPrintAgent,İfv[]pfefB[]mLANf{[]fhŽg—pžž,İPSW,İ•Ž![]n,ª[]m’—[]M[]—¹,Ü,Å•Ž![]n,Æ,È,Ä,Ä,ç
,ééè‡A^óüfjfo,í[]—,³,é,Ü,¹,ñB^óüfjfo,ð[]—,·,ééè‡,í[]m^óü[]—¹,Ü,Å•Ž![]n,É•İX,µ,Ä,-
,¾,¾,çB

n

f[]Of[]fCf<,íPrintAgent,ðfCf“fXfg[]f<,µ,½ftfHf<_,”Log“fTfuf[]fHf<_,”ÉCSVCE`Ž®,Å[]—,³,é,Ü,·Bftf@fCf
<-¼,í”[]fvfŠf“f^—¼[]j.log”,İ,æ,æ,É,È,è,Ü,·B

fqf“fg

n fT[]fX,İŠJŽn,íAAdministrators,İCE CEÀ,ª,É,ç,ÆŽÀs,Å,«,Ü,¹,ñB

,²^ó

n ,”Žg,ç,É,È,Ä,Ä,ç,éfvfŠf“f^,É,æ,Ä,Ä,íA-{<@”\,ð,²—p,É,È,é,È,çéè‡,ª,è,Ü,·B[]mfRf“fgf[]f<fpf[]n
[]mfT[]fX[]n,É“NEC Printing Information Logger”,ª“o~^(*1),³,é,Ä,ç,é,©,Ç,æ,©,ð,²Šm“F,,¾,¾,çB
*1fvfŠf“f^,É,æ,Ä,Ä,í“o~^,³,é,Ä,ç,Ä,àžg—p,Å,«,Ü,¹,ñB•;[]”,İPrintAgent’İ%žfvfŠf“f^,ªfCf“fXfg[]f<,³,é,Ä,ç
,ééè‡,íA-{<@”\,ðfT[]f[]fg,·,éfvfŠf“f^,ª1,Å,Å,à,è,İã<LfT[]fX,ª“o~^,³,é,Ü,·B

'á'¬%ñü,â[]—Ê%Ů<à%ñü,Á,ìŽg—p

'á'¬%ñü,ð,²Žg—p,ìê‡

'á'¬%ñü,ðCe—R,·,élfjfbfgf[][fN<α—LfvfŠf“f^,É,Á,ç,ÄPrintAgent,ðŽg—
p,·,é,Æ[]A'Ê[]M'¬“x,ìŠÖCEW,ÄPSW,È,Ç,ì'€[]i,²,μ,É,,ç[]ê‡,², ,è,Û,·[]B,±,ìê‡,ì[]Aflfbfgf[][fN<α—
LfvfŠf“f^,É,Á,ç,Ä,ìPrintAgent,ì'o•ûCEü'Ê[]M<@“\,ð'âŽ~ ,μ,Ä,,³/4,³,ç[]B

flfbfgf[][fN<α—LfvfŠf“f^,É,Á,ç,Ä,ìPrintAgent,ì'o•ûCEü'Ê[]M<@“\,ð'âŽ~ ,·,éê‡,ì[]A%°<L,ìŽè‡,ð[]s,Á,Ä,-
,³/4,³,ç[]B

,P fNf%ofCfAf“fgfRf“fsf...[]f^'α,Ä[]mPrintAgent,ìfvf[]pfefB[]n,ì[]m<α—LfvfŠf“f^,ð—~
p,·,é[]n,ìf`fFfbfN,ð,ì,,μ,Û,·[]B

,Q fT[][fofRf“fsf...[]f^'α,Ä[]mPrintAgent,ìfvf[]pfefB[]n,ì[]m<α—
LfvfŠf“f^,ð'ñ<ÿ,·,é[]n,ìf`fFfbfN,ð,ì,,μ,Û,·[]B[]i*1[]j

,Û,½[]AfT[][fofRf“fsf...[]f^,ìfvfŠf“f^,ì^ó[]ü[]æ,²NEC TCP/IP Port[]iWindows 98/95,Ä,ìNEC TCP/IP Printing
System[]AWindows NT,Ä,ìNEC Network Port[]j,ì[]ê‡[]A'á'¬%ñü,ðCe—R,μ,ÄPrintAgent,ðŽg—
p,·,é,Æ[]A'¬—ì,É'Ê[]M'¬“x,ìŠÖCEW,ÄPSW,È,Ç,ì'€[]i,²,μ,É,,ç,±,Æ,², ,è,Û,·[]B,±,ìê‡,ì[]A'o•ûCEü'Ê[]M<@“\
,ðŽg—p,μ,É,ç,æ,²,É,μ,Ä,,³/4,³,ç[]B

'o•ûCEü'Ê[]M<@“\,ðŽg—p,μ,É,ç,æ,²,É,·,éê‡,ì[]A%°<L,ì[]m'o•ûCEü'Ê[]M<@“\,ðŽg—p,μ,É,ç,æ,²,
,É,·,éê‡,ìŽè‡[]n,ð[]s,Á,Ä,,³/4,³,ç[]B

[]—Ê%Ů<à%ñü,ð,²Žg—p,ìê‡

"[]—f[]f^—Ê,Û,½,ì[]Ü'±ŽžŠÖ,É%ž,¶,Ä%Ů<à,³,è,é[]—Ê%Ů<à[]\$,ìflfbfgf[][fN,ðCe—
R,μ,ÄPrintAgent,ðŽg—p,μ,Ä,ç,é[]ê‡,É,à[]APrintAgent,ì'o•ûCEü'Ê[]M,É,æ,Á,Äff[]f^“[]'—,²[]¶,μ[]A
%Ů<à,³,è,é,±,Æ,², ,è,Û,·[]B

[]—¶,·,×,«flfbfgf[][fNŠÄ««,ì—á,Æ,μ,Ä,ì'Ê%°<,ì,æ,²,ÈfP[][fX,², ,è,Û,·[]B

n flfbfgf[][fNfvfŠf“f^,²[]ACEó[]O%ñü,ðCe—R,μ,½•É,ìflfbfgf[][fN[]ä,É'¶[]ÿ,·,é[]ê‡[]B

n fvfŠf“fgfT[][fo[]ADNSfT[][fo[]AWINSfT[][fo,²[]eö[]O%ñü,ðCe—
R,μ,½•É,ìflfbfgf[][fN[]ä,É'¶[]ÿ,·,é[]ê‡[]B

n f[][]f[]f<flfbfgf[][fN,ì'Ê[]MŽ©'ì,²%Ů<àflfbfgf[][fN,ì[]ê‡[]B

[]—Ê%Ů<à%ñü,Ä,ì%Ů<à,ð[]Ä[]¬CEÀ[]^ó[]üžž,ì,ÿ[]j,Æ,·,é,½,ß,É,ì%°<L,ìŽè‡,ð[]s,Á,Ä,,³/4,³,ç[]B

,P fNf%ofCfAf“fgfRf“fsf...[]f^'α,Ä[]uPrintAgent,ìfvf[]pfefB[]v,ì[]u<α—LfvfŠf“f^,ð—~
p,·,é[]v,ìf`fFfbfN,ð,ì,,μ,Û,·[]B

,Q fT[][fofRf“fsf...[]f^'α,Ä[]uPrintAgent,ìfvf[]pfefB[]v,ì[]u<α—
LfvfŠf“f^,ð'ñ<ÿ,·,é[]v,ìf`fFfbfN,ð,ì,,μ,Û,·[]B[]i*1[]j

,R fT[][fofRf“fsf...[]f^,ìfvfŠf“f^,ì^ó[]ü[]æ,²NEC TCP/IP Port(Windows 98/95,Ä,ìNEC TCP/IP Printing
System[]AWindows NT,Ä,ìNEC Network Port),ì[]ê‡[]A'o•ûCEü'Ê[]M<@“\,ðŽg—p,μ,É,ç,æ,²,É,μ,Ä,-
,³/4,³,ç[]B[]i*1[]j

{button ,J(\ PAN1.HLP>step',`IDH_PA_HIGH_STOPBIDI95')} 'o•ûCEü'Ê[]M<@“\,ðŽg—p,μ,É,ç,æ,²,É,·,é

,²'°Ó

*1fRf“fsf...[]f^,ìOS,²Windows

NT,Ä[]ÿ'è,ì•ìX,ð,·,é[]ê‡[]AAdministrators,ìCE CEÀ,², ,éft[][fU,ì,ÿ'ì[]X,Ä,«,Û,·[]B

ŠÖ~A[]€-Ú

PrintAgent.lfvf[]fpfefB

'o•ûĈü'Ê□M<@"\,ðŽg—p,μ,È,ç□ê□‡

f□□[fjfvfšf“f^,Æ,ì'o•ûĈü'Ê□M,ð'âŽ~,·,é□ê□‡,â PrintAgent,ì<@"\,ð~—
p,μ,È,ç□ê□‡,íA,»,ê,¼,ê,ìŽè□‡,É,æ,è□A□Ý'è,ð•ï□X,μ,Ä,,¾,¾,ç□B

flfbfgf□□[fN<κ—Lfvfšf“f^,ð,²Žg—p,É,È,Á,Ä,ç,é□ê□‡,Å□A□Nf%ofCfAf“fgfRf“fsf...□[f^,ìPrintAgent,ì<@"\,ðŽg
—p,μ,È,ç,Æ,«,í□A□uPrintAgent,ì'S<@"\,ð^êŽž“l,É'âŽ~,¾,¾,é□v,ì4□`7,ì□Ý'è,ð□s,Á,Ä,,¾,¾,ç□B
{button ,Jl(` PAN1.HLP>step', `IDH_PA_HIGH_STOPBIDI95')} 'o•ûĈü'Ê□M<@"\,ðŽg—p,μ,È,ç,æ,κ,É,·,é
{button ,Jl(` PAN1.HLP>step', `IDH_PA_HIGH_STOPPA95')} PrintAgent,ì'S<@"\,ð^êŽž“l,É'âŽ~,¾,¾,é

,²'□^Ó

n flfbfgf□□[fN<κ—Lfvfšf“f^,ð,²Žg—p,ì□ê□‡,Å□A,“Žg,ç,É,È,Á,Ä,ç,é□Nf%ofCfAf“fgfRf“fsf...□[f^,¾,¾,Ä,È,-
flfbfgf□□[fN'S'ì,ÅPrintAgent,ì<@"\,ð~—p,μ,È,ç,Æ,«,í□A□f□□[fofRf“fsf...□[f^,Å,à□ă<L,ì□Ý'è,ð□s,κ•K—v,²,
,è,Û,·□B□f□□[fo,ìOS,É,æ,è□Ý'è“à—e,²^Û,È,è,Û,·,ì,Å□A□Û,μ,,í□f□□[fo,ì□uPrintAgentfwf<fv□v,ì—{□€-
Û,ðŽQ□Æ,μ,Ä,,¾,¾,ç□B

'o•ûŒü'Ê□M<@"\,ðŽg—p,μ,È,ç,æ,π,É,·,é

fvfŠf“f^,Æ,ì'o•ûŒü'Ê□M<@"\,ðŽg—p,μ,È,ç□ê□‡,lŽè□‡,ð□à-¾,μ,Û,·□B'o•ûŒü'Ê□M<@"\,ðŽg—
p,μ,È,ç□Ý'è,É,·,éOS,ð'I'ð,μ,Ä,,¾,¾,ç□B

Windows 98/95



Windows NT 3.51

Windows 98/95, Á'o•ûĈÛ'ÊM<@"\,đŽg—p,μ,È,ϕ,æ,ϣ,É,·,éŽèϕ‡

n fvfŠf“f^,Æ,ì'o•ûĈÛ'ÊM,đŽg—p,μ,È,ϕêϕ‡,í^È%oo,ì,æ,ϣ,É,μ,Ä,,¾,¾,ϕB

,P Windows,ìmfXf^f[fgnfnfjff...[.©,çA□m□Y'è□n□|mfvfŠf“f^□n,đfNfŠfbfN,μ,Û,·□B

,Q •\Ž!,¾,è,½fvfŠf“f^ftfHf<f_ì't,©,çŠY“-,: ,éfvfŠf“f^,đ'ì'đ,μ□A□f□jff...[.ì□mftf@fCf<□n□|

□mfvf□fpfefB□n,đŠJ,«,Û,·□B

,R □m□Ú□×□nf^fu,ì't,ìmfXfv□[f<,ì□Y'è□n,đfNfŠfbfN,μ,Û,·□B

,S □m,±,ìfvfŠf“f^,ì'o•ûĈÛ'ÊM<@"\,đfTf|□[fg,μ,È,ϕ□n,đ'ì'đ,μ□A□mOK□n,đfNfŠfbfN,μ,Û,·□B

,T □mOK□n,đfNfŠfbfN,μ□A□f□v□fpfefB□V□[fg,đ•Ä,¶,Û,·□B

,U ,“Žg,ϕ,ìfRf“fsf...[f^,đ□Ä<N“® ,μ,Ä,,¾,¾,ϕB

,²'□^Ó

n fRf“fsf...[f^,ì□Ä<N“® ,²□s,í,è,È,ϕ

,Æ□A,»,ìĈã□Ä,Ñ'o•ûĈÛ'ÊM,đ□s,ϣ□Y'è,É,μ,Ä,à'o•ûĈÛ'ÊM,²□³□í,É□s,í,è,È,ϕêϕ‡,², ,è,Û,·□i,»,ì□è□‡,ì□

APSW,ì•\Ž!,à•s□³,É,È,é,±,Æ,², ,è,Û,·□j□B^è'U□u'o•ûĈÛ'ÊM<@"\,đŽg—

p,μ,È,ϕv,ì□Y'è,É•Ī□X,μ,½□è□‡,ì□A•K, ,“Žg,ϕ,ìfRf“fsf...[f^,đ□Ä<N“® ,μ,Ä,,¾,¾,ϕB

Windows NT 4.0, Å' o • ù Œ ü' Ê M < @ " \, ð Ž g — p, μ, È, ç, æ, x, É, •, é Ž è ‡

n fvfŠf“f^, Æ, ì' o • ù Œ ü' Ê M, ð Ž g — p, μ, È, ç ê ‡, í^ È % °, ì, æ, x, É, μ, Ä, , ¾, ³, ç B

, P mfXf^ [fg n f f j f ... [, ©, ç A m Y' è n | m f v f Š f “ f ^ n, ð f N f Š f b f N, μ, Ü, • B

, Q • \ Ž, ³, è, ½ f v f Š f “ f ^, ì †, ©, ç — { f v f Š f “ f ^, ð ' ì ð, μ A f f j f ... [, ì m f t f @ f C f < n | m f v f f p f e f B n, ð Š, «, Ü, • B

, R mf | [fg n | m' o • ù Œ ü f T f [fg, ð — L Œ ø, É, •, é n, ì f ` f f b f N, ð, Ì, , μ A O K, ð f N f Š f b f N, μ, Ü, • B

, ²' ^ Ó

n Y' è, ì • ì X, ð, •, é ê ‡ A f t f < f R f “ f g f [f < , ì Œ Œ À, a, , é f t [f U, ì, Y • ì X, Ä, «, Ü, • B

PrintAgent,ì'S<@"\,ð^èŽž"l,É'âž~,³,¹,é

PrintAgent,ì'S<@"\,ð^èŽž"l,É'âž~,·,éêê‡,í^È%º,ì,æ,α,É,μ,Ä,,¾,³,¼,¶B

- 1 □mfvf□fOf%of€f}f□[fWff□n,©,ç□mfvfŠf"fgf}f□[fWff□n,ðf_fuf<fNfŠfbfN,μ,Û,·□B
- 2 •\Žl,³,è,½fvfŠf"f^,ì't,©,ç- {fvfŠf"f^,ð'l'ð,μ□Af□fj...□[,ì□mfvfŠf"f^□n,©,ç□mfvfŠf"f^□î•ñ□n,ðŠJ,«,Û,·□B
- 3 □m^óüüæ□n,ðLPT1□iLPT2, LPT3□j,ÉÝ'è,μ□AOK,ðfNfŠfbfN,μ,Û,·□B
- 4 □mPrintAgent,ìfvf□pfefB□n,ðŠJ,«,Û,·□B
- 5 □mfVfXfef€,ðŽ©"®"l,É<N"®,·,é□n□A□m<α—LfvfŠf"f^,ð—~—p,·,é□n□A□m<α—
LfvfŠf"f^,ð'ñ<ÿ,·,é□n,ìf`fFfbfN,ð,ì,·,μ,½, ,Æ□A□mOK□n,ðfNfŠfbfN,μf_fCfAf□fOf{fbfNfX,ð•Â,¶,Û,·□B
- 6 PrintAgent,ð□l—¹,μ,Û,·□B
- 7 fT□[frfX,ð'âž~,μ,Û,·□B

ŽQ□Æ

PrintAgent,ÉŠÖ,·,é,m,s,ìfT□[frfX,ì<N"®□A'âž~

PrintAgent,Á,Ïf|[]fg,ìÝ'è

PrintAgent,ÁfvfŠf“f^,Æ'o•úCEü'É[]M,ð[]s,æ
,½,ß,É,Í[]AfvfŠf“fgf}f[]fWff,Á[]m^óüü[]æ[]n,ÏÝ'è,ð[]ALPTN1[]iLPTN2, LPTN3[]j,É[]Ý'è,·,é•K—
v,ª, ,è,Ü,·[]BLPTN1[]iLPTN2, LPTN3[]j,Í[]ALPT1[]iLPT2, LPT3[]j,Æ“^è,ì•—[]f|
[]fg,ÁfvfŠf“f^,Æ,ì'o•úCEü'É[]M,ð[]s,æ,½,ß,Ïf|[]fg,Á,·[]BPrintAgent,ÏfCf“fXfg[]f<,ð[]s,æ
,ÆŽ©“@“l,É[]ALPTN1[]iLPTN2, LPTN3[]j,É[]Ý'è,³,è,Ü,·[]B,Ü,½[]A•Ð•úCEüf,[]fh,ÁfvfŠf“f^,ðŽg—
p,µ,½,ç[]é[]#,Í[]A[]m^óüü[]æ[]n,ðLPT1[]iLPT2, LPT3[]j,É[]Ý'è,µ,Ä,,¾,¾,ç[]BLPT1[]iLPT2,
LPT3[]j,É[]Ý'è,ð[]s,æ,Æ[]AfvfŠf“f^,Æ,ì'o•úCEü'É[]M,Í[]s,í,è,Ü,¹,ñ[]B

fqf“fg

16frfbfgWindowsfAfvfŠfP[]fVf#f“,Á[]A[]o—í[]æ,ªLPTN1[]iLPTN2, LPTN3[]j,Á,í,È,[]ANeXX,Æ•\
Ž|,³,é,é[]é[]#,ª, ,è,Ü,·[]B,±,é,ÍWindows
NT,ª16frfbfgWindowsfAfvfŠfP[]fVf#f“,ì,½,ß,ÉŽ©“@“l,É•İŠ,µ,½,à,ì,ª\Ž|,³,è,Ä,ç,Ü,·[]B,»,ì,Ü,Ü,“Žg,ç,ç
,½,¾,¯,Ü,·[]B

,²'[]^Ó

n fvfŠf“f^,ì^óüü[]æ,ªLPT1[]iLPT2, LPT3[]j,ÏfvfŠf“f^,ÆLPTN1[]iLPTN2,
LPTN3[]j,ÏfvfŠf“f^,ª“[]Ý,·,é[]é[]#[]A'o•ú,ÏfvfŠf“f^,©,ç“ŽŽ,É^óüü,ð,µ,È,ç,Ä,,¾,¾,ç[]B^óŽš•s[]³,ª“[]¶,·,é,±
,Æ,ª, ,è,Ü,·[]B

ŠÖ~AŽ-[]€

'o•úCEü'É[]M<@“\,ðŽg—p,µ,È,ç[]é[]#

PrintAgent,ÉŠÖ,·,éNT,ìfT[]fxfX,ì<N“®[]A'âž~

PrintAgent,Á,í[]A

n NEC Network Printer Status Server

n NEC Printer Status Database

n NEC Printer Status Watcher

n NEC Printing Information Logger

n NEC Private Spool System

,ìfT[]fxfX,Æ

n P1284 Parallel Class Driver

,ìfffofCfX,ª,·,è,Û,·[]B

,²'[]Ó

n ,·žg,ç,É,È,Á,Ä,ç,éfvfŠf“f^,É,æ,Á,Ä,í[]A“o~^,³,é,Ä,ç,éfT[]fxfX,í^Û,È,è,Û,·[]B

NEC Network Printer Status Server,É,Á,ç,Ä

ìfìbfgf[]fNfNf%ofCfAf“fgfvfŠf“f^,ðfìbfgf[]fN[]ä,Á<α—L,μ[]AfNf
%ofCfAf“fg,ÉfvfŠf“f^,ì[]ó'Ö,ðœöŠj,·,é[]ê[]‡,ÉŠjŽn,μ,Ä,-
,¾,³,ç[]BŠjŽn,·,é,É,í[]APrintAgent,ìfvf[]pfefB,Á[]m<α—
LfvfŠf“f^,ð'ñ<ÿ,·,é[]n,ðf'fffbfN,·,é,©[]A[]mfRf“fgf[]f<fpfìf<[]n[][]mfT[]fxfX[]n,Á“NEC Network
Printer Status Server” ,ðŠjŽn,μ,Ä,,¾,³,ç[]B

NEC Printer Status Database,É,Á,ç,Ä

PrintAgent,ÁfvfŠf“f^,ì,·,x,Ä,ì[]ó'Ö,ð·Û'¶,·,é,½,β,É·K—v,ÈfT[]fxfX,Á,·[]BPrintAgent,ð,²—~—
p,ì[]ê[]‡,ì[]mfRf“fgf[]f<fpfìf<[]n[][]mfT[]fxfX[]n,ì[]mfXf^[]f[]gfAfbfv[]n[][]mfXf^[]f[]gfAfbfv,ìží—
p[]n,ð[]mž““®[]n,É,μ,ÄfRf“fsf...[]f^<N“®žž,É·K,ž““®<N“®,·,é,æ,α,É,μ,Ä,,¾,³,ç[]B

NEC Printer Status Watcher,É,Á,ç,Ä

PrintAgent'í%žfvfŠf“f^,ðšÄž<,·,é,½,β,É·K—v,ÈfT[]fxfX,Á,·[]BPrintAgent,ð,²—~—
p,ì[]ê[]‡,ì[]mfRf“fgf[]f<fpfìf<[]n[][]mfT[]fxfX[]n,ì[]mfXf^[]f[]gfAfbfv[]n[][]mfXf^[]f[]gfAfbfv,ìží—
p[]n,ð[]mž““®[]n,É,μ,ÄfRf“fsf...[]f^<N“®žž·K,ž““®<N“®,·,é,æ,α,É,μ,Ä,,¾,³,ç[]B

NEC Printing Information Logger,É,Á,ç,Ä

'¼[]ÚfvfŠf“f^,²[]Ú'±,³,é,½fRf“fsf...[]f^,Á^óüü[]·ñ,ðf[]Of tf@fCf<,É<L~^,·,é[]ê[]‡,ÉŠjŽn,μ,Ä,-
,¾,³,ç[]BŠjŽn,·,é,É,í[]A[]mfRf“fgf[]f<fpfìf<[]n[][]mfT[]fxfX[]n,Á“NEC Printing Information Logger”
,ðŠjŽn,μ,Ä,,¾,³,ç[]Bžžÿ%ñWindows NT<N“®žž,Éž““®“ì,ÉŠjŽn,·,é,É,í[]mfXf^[]f[]gfAfbfv[]n[]
[]mfXf^[]f[]gfAfbfv,ìží—p[]n,ð[]mž““®[]n,É,μ,Ä,,¾,³,ç[]B
[]mPrintAgent,ìfvf[]pfefB[]n[][]mLANf{[]f[]hžg—pžž,ìPSW·\ž;[]n[][]m'—[]M[]!—¹,Û,Á·\
ž;[]n,Æ,È,Á,Ä,ç,é[]ê[]‡^óüüf[]fO,í[]n—,³,é,Û,¹,ñ,ì,Á[]A[]mPrintAgent,ìfvf[]pfefB[]n[][]mLANf{[]f[]hžg
—pžž,ìPSW·\ž;[]n[][]m^óüü[]!—¹,Û,Á·\ž;[]n,É,μ,Ä,,¾,³,ç[]B
f[]fOf tf@fCf<,íPrintAgent,ðfCf“fXfg[]f<,μ,½f tfHf<f_,ì“Log“ftfuf tfHf<f_,ÉCSVCE`žž,Á[]n—,³,é,Û,·[]Bft
f@fCf<-¼,í“[]fvfŠf“f^~¼[]j.log”,ì,æ,α,É,È,è,Û,·[]B

NEC Private Spool System,É,Á,ç,Ä

'¼[]ÚfvfŠf“f^,²[]Ú'±,³,é,½fRf“fsf...[]f^,ÁfŠfvfŠf“fg<@“\,ð—~—p,·,é[]ê[]‡,â[]Afìbfgf[]fNfNf
%ofCfAf“fg,ÉfŠfvfŠf“fg<@“\,ð'ñ<ÿ,·,é[]ê[]‡,ÉŠjŽn,μ,Ä,-
,¾,³,ç[]BŠjŽn,·,é,É,í[]APrintAgent,ìfvf[]pfefB,Á[]mfŠfvfŠf“fg<@“\
,ð'ñ<ÿ,·,é[]n,ðf'fffbfN,·,é,©[]A[]mfRf“fgf[]f<fpfìf<[]n[][]mfT[]fxfX[]n,Á“NEC Private Spool System”
,ðŠjŽn,μ,Ä,,¾,³,ç[]B

▶ Ú, μ, , í mfRf“fgf [f<fpjlf<n [mfT [frfX n, lfwf<fv, đ, 2—, , 3/4, 3, 4 B

P1284 Parallel Class Driver, É, Â, 4, Ä

f [fj]f<f [f]g i "LPT1:" "A" LPT2:" "A" LPT3:" " " j, Å' o • û Ć ü' Ê M < @ " \, đ s, x, 1/2, ß, É • K — v, È hf
% of Cfo, Ä, . B PrintAgent, đ, 2— — p, i ê ÷, í • K, , A mfRf“fgf [f<fpjlf<n [n [n
mfff of CfX n, í mfXf ^ [fgf Afbfv, i Ž í — p n, đ m Ž © “ @ n, É, μ, Ä fRf“fsf...
[f ^ < N “ @ Ž Ž, É • K, , Ž © “ @ < N “ @ , , é, æ, x, É, μ, Ä, , 3/4, 3, 4 B

▶ Ú, μ, , í mfRf“fgf [f<fpjlf<n [mfff of CfX n, lfwf<fv, đ, 2—, , 3/4, 3, 4 B

ŽQ Æ

{ button , JI (` Pan1.HLP > step ' , ` IDH_PA_HIGH_PAMANUALSTART ') } PrintAgent, đ Ž è “ @ , Å < N “ @ , , , é
{ button , JI (` Pan1.HLP > step ' , ` IDH_PA_HIGH_PAMANUALEND ') } PrintAgent, đ Ž è “ @ , Å ' à Ž ~ , , , é

PrintAgent,đŽè“®,Á<N“®,·,é

PrintAgent,đŽè“®,Á<N“®,·,é,É,Í^È%º,ì,æ,α,É,μ,Ä,,¾,¾,¾,¾,¾,¾

- 1 □mfRf“fgf□□[f<fpflf<□n,đŠJ,«□A□mfffofCfX□n,đf_fuf<fNfŠfbfN,μ□A"P1284 Parallel Class Driver",đ<N“®,μ,Ä,,¾,¾,¾,¾,¾,¾
- 2 □mfffofCfX□n,đ□I—¹CEã□A□mfT□[frfX□n,đf_fuf<fNfŠfbfN,μ□A"Spooler" ,ā□mŠJŽn□n,¾,é,Ä,ç,é,ì,đŠm“F,μ,Ä,,¾,¾,¾,¾,¾,¾
- 3 "NEC Printer Status Database" ,đ<N“®,μ,Ä,,¾,¾,¾,¾,¾,¾
- 4 "NEC Private Spool System",đ<N“®,μ,Ä,,¾,¾,¾,¾,¾,¾
- 5 "NEC Printing Information Logger",đ<N“®,μ,Ä,,¾,¾,¾,¾,¾,¾
- 6 "NEC Printer Status Watcher" ,đ<N“®,μ,Ä,,¾,¾,¾,¾,¾,¾
- 7 "NEC Network Printer Status Server" ,đ<N“®,μ,Ä,,¾,¾,¾,¾,¾,¾
- 8 fvf□fOf%of€f}f□[fWff,ì "fvfŠf“f^<@Ž/-¾" fOf□[fv,ìmPrintAgentfVfXfef€<N“®□n,đf_fuf<fNfŠfbfN,μ,Ä,,¾,¾,¾,¾,¾,¾
- 9 fvfŠf“fgf}f□[fWff,Á,·,×,À,ìPrintAgent‘Í%ºžfvfŠf“f^,ì□o—Í□æ,đ" **LPT1**□i**LPT2**, **LPT3**□j" ,©,ç " **LPTN1**□i**LPTN2**, **LPTN3**□j" ,É•ï□X,μ,Ä,,¾,¾,¾,¾,¾,¾

,²’□^Ó

n , Žg,ç,É,È,Á,Ä,ç,éfvfŠf“f^,É,æ,Á,Ä,í□A“o~^,¾,é,Ä,ç,È,çfT□[frfX,à, ,è,Ü,·□B“o~^,¾,é,Ä,ç,È,çfT□[frfX,É,Á,ç,Ä,ìŽè□‡,í□A,““Ç,Ý”ò,ì,μ,,¾,¾,¾,¾,¾,¾

PrintAgent,đŽè“®,Á’âŽ~,.,é

PrintAgent,đŽè“®,Á’âŽ~,.,é,É,Í^È%ooº,ì,æ,æ,É,μ,Ä,,¾,¾,ç□B

1 fvfŠf“fgf}f□[fWff,Á,.,x,À,ìPrintAgent’Í%žfvfŠf“f^,ì□o—í□æ,đ" **LPTN1□iLPTN2, LPTN3□j**" ,©,ç " **LPT1□iLPT2, LPT3□j**" ,É•İ□X,μ,Ä,,¾,¾,ç□B

2 PrintAgentfAfCfRf“ ,ì□m•Ä,¶,é□n,đ’l,ñ,Á□l—¹,¾,¾,¾,¾,ç□B

3 □mfRf“fgf□□[f<fpjlf<□n,đ<N“®,μ□A□mfT□[fxfX□n,đf_fuf<fNfŠfbfN,μ,Ä,,¾,¾,ç□B

4 "NEC Network Printer Status Server" ,đ’âŽ~,μ,Ä,,¾,¾,ç□B

5 "NEC Printer Status Watcher" ,đ’âŽ~,μ,Ä,,¾,¾,ç□B

6 "NEC Private Spool System", "NEC Printing Information Logger", "NEC Printer Status Database" ,đ’âŽ~,μ,Ä,,¾,¾,ç□B

7 □mfT□[fxfX□n,đ□l—¹,μ□A□mfffofCfX□n,đf_fuf<fNfŠfbfN,μ,Ä,,¾,¾,ç□B

8 "P1284 Parallel Class Driver" ,đ’âŽ~,μ,Ä,,¾,¾,ç□B

,²’□^Ó

n ,Žg,ç,É,È,Á,Ä,ç,éfvfŠf“f^,É,æ,Á,Ä,í□A“o~^,¾,é,Ä,ç,È,çfT□[fxfX,à, ,è,Ü,·□B“o~^,¾,é,Ä,ç,È,çfT□[fxfX,É,Á,ç,Ä,ìŽè□‡,í□A,““Ç,Ý”ò,î,μ,,¾,¾,ç□B

PrintAgent,ä<N“® ,μ,Ä,ç,È,ç ê#î,ì<@”\

PrintAgent,ìfAfCfRf“,đ□|—¹,·,é,Æ□Aflfbfgf□□[fN<α—LfvfŠf“f^,ìî•ñŽæ“¾,Æ^ó□üŽž,ìPSW,ìŽ©“®<N“®<@”\ ,Í—~—p,Å,«,È,,È,è,Ü,·,ª□A^È%ª,ì<@”\,í“®□ì,μ,Ä,ç,Ü,·□B

n f□□[f<’É’m□AWeb PrintAgent

n Ž©•ª,ìfRf“fsf...□[f^,©,ç’ñ<Ÿ,μ,Ä,ç,éflfbfgf□□[fN<α—

LfvfŠf“f^,ìfXfe□[f^fX<Ÿ<<□i□mPrintAgent,ìfvf□fpfefB□n,Å□m<α—LfvfŠf“f^,đ’ñ<Ÿ,·,é□n,ª`fFbfN,³,è,Ä,ç ,½□ê#îj

fçf“fç

PrintAgent,ä<N“® ,μ,Ä,ç,È,ç,Æ,«,Å,à□AfvfŠf“f^,ìfvf□fpfefB,đŠJ,ç,½,è□AfXf^□[fgf□fjf...

□[,©,çPSW,đ<N“®,·,é,Æ□AZ©“®“l,ÉPrintAgent,ä<N“®,μ□Af^fXfNfo□[,ÉfAfCfRf“,Æ,μ,Ä□í“,μ,Ü,·□B

“ÁŽê,ÈfvfŠf“f^Ú’±<@Ší,ð,“Žg,ç,ìê†

PrintAgent'Í%žfvfŠf“f^,ðfCf“fXfg[f<,μ,½,Æ,«,ÉŽw'è,μ,½f]
[fg,ÉAŠO•t, ,ìfvfŠf“f^fCf“f^ftfF[fX•İŠ·fAf_fvf^,âfvfŠf“f^fofbftf@,ð,“Žg,ç,ìê†APrintAgent,Í³,μ,-
“@ì,μ,Û,¹,ñB,±,ê,ç,ì<@Ší,ð,“Žg,ç,É,È,éê†,ÍAŽŸ,ì[u,ðŽæ,Á,Ä,,¾,³,çB
{button ,Jl(` PAN1.HLP>step', `IDH_PA_HIGH_STOPBIDI95')} 'o•ûœü'ÉM<@“\,ðŽg—p,μ,È,ç,æ,π,É,·,é

ŠY“-.,,é□o—Íf|□[fg,ì,ÝPrintAgent,đ“®□ì,μ,È,ç,æ,κ,É,.,é

ŠY“-.,,é□o—Íf|□[fg,ì,ÝPrintAgent,đ“®□ì,μ,È,ç,æ,κ,É,.,é□ê□#,í^È%□□,ì,æ,κ,É,μ,Ä,,¾,¾,¾,ç□B

1 □mfvf□fOf%□f€f}f|□[fWff□n,©,ç□A□mfvfŠf“fgf}f|□[fWff□n,đf_fuf<fNfŠfbfN,μ,Ü,·□B

2 •\Ž!,¾,è,½fvfŠf“f^,ì†,©,ç□A-{fvfŠf“f^,đ‘đ,μf□fjf...

□[,ì□mfvfŠf“f^□n,©,ç□A□mfvfŠf“f^□î•ñ□n,đŠJ,«,Ü,·□B

3 □m^ó□ü□æ□n,đ□ALPT1□iLPT2, LPT3□j,É□Ý’è,μ,Ü,·□B

PrintAgent,ì'Ç%oÁ,Æíœ

PrintAgent,Á,íPrintAgent,ì<@"\,ì'Ç%oÁ,Æíœ,ðŠÈ'P,És,!,Ü,·B

PrintAgent,íjXf^f€fCf"fxfg[f<,ð,·,é,±,Æ,É,æ,Á,ÄA~—p,μ,½,ç<@"\,¾,¯,ðfCf"fxfg[f<A~—
p,μ,È,ç<@"\,ðfAf"fcf"fxfg[f<,·,é,±,Æ,ª,Á,«,Ü,·BPrintAgent,ì<@"\,ì'Ç%oÁAíœ,ðs,α,É,ímfvfOf
%of€f}fí[fWffn|mfvfŠf" f^<@Ží-¼n|mPrintAgentfZfbfgfAfbfvn,ðf_fuf<fNfŠfbfN,μ,Ä,,¾,³,çB

,²^ó

n , Žg,ç,É,È,Á,Ä,ç,évfŠf" f^,É,æ,Á,Ä,íA mPrintAgent,ì'Ç%oÁ,Æíœn,ª,²—~—p,É,È,ê,È,çê,ª,ª,è,Ü,
BÚ,μ,íAfvfŠf" f^,íftU{Yf}ffj..fAfx,ð,²ZQÆ,,¾,³,çB

fCf“fXfg□f<,·,éfvfŠf“f^,ì<@Ží-¼,ª•\Ž|,³,ê,Ü,·□B

;"Ç,Ý,,¾,¾,ç. TXT,²fCf"fXfg[]f<,¾,ê,Ü,·BfvfŠf"f^,ð,Í,¶,ß,Ä,"Žg,ç,É,È,é[]ê[]†,É,"Ç,Ý,,¾,¾,ç[]B

f v f Š f " f ^ f X f e □ l f ^ f X f E f B f " f h f E , a f C f " f X f g □ l f < , 3 , ê , Ü , . □ B f v f Š f " f ^ f X f e □ l f ^ f X f E f B f " f h f E , í □ A % œ - Ê , â
% ° 1 □ ° , É , æ , è f v f Š f " f ^ , ð Š Ä Ž < , · , é , ± , Æ , a , Å , Ü , · □ B

f`fFfbfN,ð,μ,Û,·,Æ□AftfEf“fhbftf@fCf<,âfCf“fXfg□[f<,³,ê□AfvfŠf“f^,ì□ó‘Ô,ð%°¹□º,Å,“’m,ç,¹,·,é,±
,Æ,ª,Å,«,Û,·□B

f v f Š f " f ^ f X f e [f ^ f X f E f B f " f h f E , ì - { ' ì , ð f C f " f X f g [f < , μ , Û , · [B f v f Š f " f ^ , ì [ó ' Ô , ð % æ - Ê , Å , " ' m , ç , ¹ , μ , Û , · [B -
{ ' ì , ì , Ý , ð f C f " f X f g [f < , μ , ½ [ê [# [A % ° ¹ [° , Ê , æ , é ' Ê ' m , í , ³ , ê , Û , ¹ , ñ [B

Windows NT 3.51—p, ïfvjŠf“f^fhf%ofCfo, ðfCf“fXfg□[f<, μ, Ü, ·□B

'ä'Öfhf%oCfo,đfCf"fxfg[f<,μ,Ü,·BWindows NT 4.0,ì,Ý•\Ž|,³,ê,Ü,·B,·,Å,É'ä'Öfhf
%oCfo,³fCf"fxfg[f<,³,ê,Ä,ç,ééé‡,Í•\Ž|,³,ê,Ü,¹,řB

PrintAgent,lfwf<fv,đfCf“fXfg□[f<,μ,Ü,·□B

fŠf. [fgfpflf<, ðfCf“fXfg [f<, μ, Ü, · BfŠf. [fgfpflf<, Æ, í AfvfŠf“f^, ì € [fpflf<, Å s, Á, Ä, ç, ½ ŠeŽ í [è, ðfRf“fsf...
 [f^ [ã, ©, ç [s, !, éft [fefBfŠfefB\ftfgfEjFfA, Å, · B

<α'ÊflfvfVf#f",Æ,μ,ÄfvfŠf"f^ê—□AfvfŠf"f^ŠÇ—□ft□[fefBfŠfefB,ðfCf"fXfg□[f<,μ,Û,·□BfvfŠf"f^ŠÇ—
□ft□[fefBfŠfefB,ðfCf"fXfg□[f<,.é,É,Í□AŠÇ—□ŽÒ,Æ,μ,ÄfCf"fXfg□[f<,.é•K—v,^a, ,è,Û,·□B

Web PrintAgent,đfCf“fXfg□[f<,μ,Ü,·□BfvfŠf“fgfT□[fo□[,ÉŽ-‘O,ÉMicrosoft Internet Infomation
Server,È,ÇWebfT□[fo□[,³fCf“fXfg□[f<,³,è,Ä,È,ç,Æ•\Ž|,³,è,Ü,¹,ñ□B□Ú,μ,,í□AfvfŠf“f^,ìft□[fU□[fYf}ffj...
fAf<,đ,²ŽQ□Æ,,³/₄,³,ç□B

f v f Š f " f ^ ê — , ð f C f " f X f g [f < , μ , Ü , · □ B f v f Š f " f ^ ê — , í □ A , " Ž g , ç , É , È , Á , Ä , ç , é f R f " f s f ...
□ [f ^ , É f C f " f X f g [f < , ð , é , Ä , ç , é f v f Š f " f ^ , ð ^ ê — • \ Ž ! , · , é , ± , Æ , ð , Å , « , Ü , · □ B

f v f Š f " f ^ Š Ç — □ f t □ [f e f B f Š f e f B , đ f C f " f X f g □ [f < , μ , Ü , · □ B f v f Š f " f ^ Š Ç —
□ f t □ [f e f B f Š f e f B , Å , í □ A f v f Š f " f ^ Ž © " ® □ Ø ' Ö □ A f □ □ [f < ' É ' m , ð , ² — ~ — p , É , È , è , Ü , · □ B f v f Š f " f ^ Š Ç —
□ f t □ [f e f B f Š f e f B , đ f C f " f X f g □ [f < , · , é , É , í □ A Š Ç — □ Ž Ò , Æ , μ , Ä f C f " f X f g □ [f < , · , é • K — v , ð , , è , Ü , · □ B

f□□[f<'É'm,đfCf“fXfg□[f<,μ,Ü,·□Bf□□[f<'É'm,Æ,í□AfvfŠf“f^,Å•ÛŽç—p,ìfGf%□□[,ª”□¶,μ,½□ê□‡,É□AfGf
%□□[□î•ñ,â□Š□Ý'n□î•ñ,È,Ç,đ<L□Ú,μ,½f□□[f<,đ”□M,·,é<@“\,Å,·□B,±,ê,đ,**m,d,b e-**
mailf□f“fejif“fX,ÆĀÄ,Ñ,Ü,·□B

f v f Š f " f ^ Š Ç — □ f t □ [f e f B f Š f e f B , ð f C f " f X f g □ [f < , μ , Ü , · □ B f v f Š f " f ^ Š Ç —
□ f t □ [f e f B f Š f e f B , Æ , Í □ A f l f b f g f □ □ [f N f v f Š f " f ^ , â f □ □ [f j f < f v f Š f " f ^ □ A L A N f { □ [f h , à , μ , , Í L A N f A f _ f v f ^ , Å □ Ú ' ±
, ³ , è , ½ f v f Š f " f ^ , ð ^ è — • \ Ž | , μ , Ü , · □ B f C f " f X f g □ [f < E ` ' Ô , É , æ , è □ A f v f Š f " f ^ , Ì Ž © " ® □ Ø ' Ö □ A f □ □ [f < ' É ' m , È , Ç , Ì < @ " \
, ð , " Ž g , ç , É , È , é , ± , Æ , ¢ , Å , « , Ü , · □ B

fCf“fXfg[]f<,μ,Ü,·,Æ[]A^óüf[]fO,đ[]¬,μ,Ü,·[]BWindows NT,ì,Ý•\Ž|,³,ê,Ü,·[]B

PrintAgent,lfAf“fCf“fXfg[]f<

PrintAgent,đfAf“fCf“fXfg[]f<,·,éêê‡,íAf+[]fU[]fYf}fjf...fAf<,lPrintAgent'Ç%Á,Æíœ,ì€,đŽQÆ,μ,Ä,-
,³/₄,³,çB

PrintAgent'í%žfvfŠf“f^,Æ,»,ì'¼,ìfvfŠf“f^,ì<æ'¶

PrintAgent'í%žfvfŠf“f^,ÅŽg—p,·,é^óüüæ,ìf|[[fg(LPTN1, LPTN2, LPTN3),ì'ÓŽ-€

n PrintAgent'í%žfvfŠf“f^—~—pŽž,Ém^óüüæn**1*¶,Æ,μ,ÅŽw'è,·,émLPTN1, LPTN2, LPTN3¶nf|

[[fg,íAPrintAgent'í%žfvfŠf“f^,Æ'o•ûCEü'ÉM,ðs,æê¶,É—~—p,·,éê—p,ìf|[[fg,Å,·B

n ,»,ì'¼,ìfvfŠf“f^,íA,±,ìf|[[fg,ðm^óüüæn,ÉŽw'è,μ,È,ç,Å,,¼,³,çBCEë“@¶,ìCE^ö,É,È,è,Ü,·B

***1**fvfŠf“fgf}f|[[fWff,Å'íÜ,ìfvfŠf“f^,ð'l'ð,μAfffj...[.ìmfvfŠf“f^¶n|

¶mfvfŠf“f^î•ñn,ÅACE»ÝÝ'è,³,è,Ä,ç,ém^óüüæn,ðŠm”F,·,é,±,Æ,ª,Å,«,Ü,·B

ŽQÆ

PrintAgent,Å,ìf|[[fg.ìÝ'è

flfbfgf[][]fN,ÉŠÖ,·,é-â'è

,²—,É,È,è,½,ç[]€-Ú,ðfNfŠfbfN,μ,Ä,,¾,³,ç[]B

{button ,JI(`Pan1.HLP>tblshoot',`IDH_PA_ERR_NET_CANTPRINT')}

flfbfgf[][]fNfvfŠf“f^,É'í,μ,Ä^ó[]ü,ª,Ä,«,È,ç

{button ,JI(`Pan1.HLP>tblshoot',`IDH_PA_ERR_NET_PSWCANTGETINFO')}} PSW,ÅfT[][]fofRf“fsf...


[]f^,ì[]î•ñ,ªZæ“¾,Ä,«,È,ç

{button ,JI(`Pan1.HLP>tblshoot',`IDH_PA_ERR_NET_LOWPRINT')}} flfbfgf[][]fN,Ä^ó[]ü,ª'x,ç

{button ,JI(`Pan1.HLP>tblshoot',`IDH_PA_ERR_PIC')}} []»•iftf[][]fg


fłfbfgf [fNfvfŠf“f^,É’í,μ,Ä^óü,ª,Ä,«,È,ç

n Windows,łfbfgf [fN,ìŸ’è AfvfŠf“f^,ìŸ’è,ª^Ùí,Ä,·B

 Windows,łfbfgf [fN,ìŸ’è AfvfŠf“f^,ìŸ’è,đŠm”F,μ,Ä,,¾,¾,çBÚ,μ,,ÍAWindows,łfwfçfv,đ,²—,-,¾,¾,çB


PSW,ÁŦ[fofRf“fsf...[f^,ìî•ñ,Žæ“¾,Á,«,È,ç

n flfbfgf[fNf,fWf...[f<A,Ü,½,íflfbfgf[fN,»,ì,à,ì,É-â'è,ª, ,è,Ü,·B

PSW,Á•Ž,³,è,Ä,ç,éfbfZ[fW,É,æ,Á,Ä'î^•û-@,ª^Ü,È,è,Ü,·BÜ,μ,,íA[mfvf[fOf
%of€f}f[fWff[n,ìmfvfSf“f^<@Ží-¼[n,©,çA[mPrintAgentfwf<fv[n]

mPSW,ífbfZ[fW[n,ì,»,è,¾,è,ì€δZQÆ,μ,Ä,,¾,³,çB

n PrintAgent,íANetBEUIfvf[fgfRf<,đTf|f[f,μ,Ä,ç,Ü,¹,ñB

PrintAgent,íANEC TCP/IP Printing System(Windows 98/95),Ü,½,íNEC Network Port(Windows NT),ì,Ý,²
—~—p,É,È,è,Ü,·B

fŠf, [lfgfpflf<, Áflfbfgf [fN<α—LfvfŠf“f^, ìî•ñ, aŽæ“¾, Å, «, È, †

n fvfŠf“f^, aA'o•ûœü'ÉM, Å, «, È, †fCf“f^ftfF [fX, ÅÚ'±, ³, ê, Ä, †, Ü, ·B, à, μ, , ífvfŠf“f^, afofbftf@, ðœo—
R, μ, ÅÚ'±, ³, ê, Ä, †, Ü, ·B

fvfŠf“f^, ìœ»Ý, ìÝ'è, í“Ç, Ýž, p, ±, Æ, a, Å, «, Ü, ¹, ñB

n fvfŠf“f^, aiftf%ofCf“, Å, ·B

iftf%ofCf“, ìê±, ífvfŠf“f^, ìÝ'è, í“Ç, Ýž, ß, Ü, ¹, ñB^óü%oÅfXfCfbf` , ð%Ÿ, μ, Å, , ¾, ¾, †B

n fvfŠf“f^, a^óü't, Å, ·B

^óü't, ìê±, ífvfŠf“f^, ìÝ'è, í“Ç, Ýž, ß, Ü, ¹, ñBPSW, È, Ç, Å, ²Šm“F, ì, α, !A^óü|—¹, ð, 'Ö, ¿, , ¾, ¾, †B

fŠf, [f g f p f l f <, Å f l f b f g f [f N < x — L f v f Š f “ f ^, Ö Ý ’ è, Å, «, È, †
n f Š f, [f g f p f l f <, Å f l f b f g f [f N < x — L f v f Š f “ f ^, Ö Ý ’ è, ð s, ”, x, Æ, μ, Å, †, Ü, · B
f Z f L f ... f Š f e f B, É, æ, è A f l f b f g f [f N < x — L f v f Š f “ f ^, Ö, Í Ý ’ è, Å, «, Ü, ¹, ñ B

Ž Q Æ

[f Š f, \[f g f p f l f <, f Z f L f ... f Š f e f B](#)

fifbfgf[]fN,Å^óü,ª'x,ç

n 'o•ûCEü'ÊM<@"\,ð,²Žg—p,É,È,Á,Ä,ç,Ü,·B

á'¬,Èfifbfgf[]fN%ñü,²Žg—pŽž,È,ÇA'o•ûCEü'ÊM<@"\,ð,²Žg—p,É,È,ç,È,ç,ÆA^óü,ª'¬,,È,éê±,ª,
,è,Ü,·B

mPrintAgent,ìfvf[]pfefB[]n,ìmLANf{[]fhŽg—pŽž,ìPSW•\Ž![]n,ªm^óü|—¹,Ü,Å•\Ž![]n,ÉY'è,³,è,Ä,ç,
,Ü,·B

mPrintAgent,ìfvf[]pfefB[]n,ìmLANf{[]fhŽg—pŽž,ìPSW•\Ž![]n,ªm'—M|—¹,Ü,Å•\Ž![]n,ÉY'è,·,é,±,
,Æ,Å%ü'P,³,è,éê±,ª,è,Ü,·B

ŽQÆ

'á'¬%ñü,â[]—Ê%Ü<à%ñü,Å,ìŽg—p

,»,'¼,ì-â'è

,²—,É,È,è,½,ç□€-Ú,ðfNfŠfbfN,μ,Ä,,¾,¾,ç□B

{button ,JI(` Pan1.HLP>tblshoot', `IDH_PA_ERR_ETC_PAOFF') } PrintAgent,ª«N“® ,μ,Ä,ç,È,ç

{button ,JI(` Pan1.HLP>tblshoot', `IDH_PA_ERR_ETC_NOSPOOLER') } ^ó□ü,ÉŽžŠÔ,ª,©,©,é

{button ,JI(` Pan1.HLP>tblshoot', `IDH_PA_ERR_ETC_DATA LAMP') } ^ó□ü,μ,Ä,ç,È,ç,ì,ÉfvfŠf“f^,ì□mff□[f^□nf
%of“fv,ª“ _“” ,·,é

{button ,JI(` Pan1.HLP>tblshoot', `IDH_PA_ERR_ETC_NEXTLOGON') }

PSW,ìfvf□pfefB□APrintAgent,ìfvf□pfefB,ì□Ý'è,ªŽŸ%ñf□fOjf“Žž,É”½%of,¾,è,È,ç

{button ,JI(` Pan1.HLP>tblshoot', `IDH_PA_ERR_ETC_DATA REMAIN') } ^ó□üff□[f^,ªfvfŠf“f^,ÉŽc,Á,Ä,ç
,é□é□‡

{button ,JI(` Pan1.HLP>tblshoot', `IDH_PA_ERR_ETC_PRNLOG') } ^ó□üff□fO,ªì□¬,¾,è,È,ç


{button ,JI(` Pan1.HLP>tblshoot', `IDH_PA_ERR_ETC_16BITAP') }


16frfbfgWindowsfªfvfŠfP□[fvf‡“,ªfvfŠf“f^□Ý'è,ª,Á,«,,È,ç□^ó□ü,ª,Á,«,,È,ç

{button ,JI(` Pan1.HLP>tblshoot', `IDH_PA_ERR_PIC') } □»•iftf|□[fg

PrintAgent, a<N" @, μ, Ä, ç, È, ç

n PrintAgent, ³ft[]fU, È, æ, Á, Ä[]—¹, ³, è, Ü, μ, ½[]B


 , ±, ÿ{f^f“

 , ðfNfŠfbfN, ., é, ©[]A[]mfvf[]fOf%œf}f[][]fWff[]n, ì[]mfvfŠf“f^<@Ž/-
¼[]n, ©, ç[]A[]mPrintAgentfVfXfef€<N" @[]n, ðfNfŠfbfN, ., é, Æ[]APrintAgent, a<N" @, ³, è, Ü, .[]B

ŽQ[]Æ

[PrintAgent, ì<N" @](#)


n []mPrintAgent, ðvf[]fpfefB[]n, Å[]A[]mfvfXfef€, ðŽ©“ @“I, È<N" @, ., é[]n, ³f`fFfbfN, ³, è, Ä, ç, Ü, ¹, ñ[]B

 []mfVfXfef€, ðŽ©“ @“I, È<N" @, ., é[]n, ðf`fFfbfN, μ, Ä, , ¾, ³, ç[]BŽŸ%œñ, ìWindowsf[]fOfj“Žž, ©, ç, ±, ì[]Ý'è, Í—
LCEø, È, È, è, Ü, .[]B

ŽQ[]Æ


[PrintAgent, ðvf\[\]fpfefB](#)

n •K—v, Èf, fWf...[]f<, ³fCf“fXfg[]f<, ³, è, Ä, ç, È, ç, ©[]í[]œ, ³, è, Ä, ç, Ü, .[]B

 PrintAgent, ð[]ÄfCf“fXfg[]f<, μ, Ä, , ¾, ³, ç[]B

^óü,ÉŽšŒ,â,©,©,é

n fXfv[f%o,đŽg—p,μ,È,çŸ'è,É,È,Á,Ä,ç,Û,

mfvf[fO%of€f}f![]fWff[]n,©,çmfvfŠf“fgf}f![]fWff[]n,đf_fuf<fNfŠfbfN,μA^îÛ,lfvfŠf“f^,đ'!đ,μf[]fj...
[]l,lfmfvfŠf“f^[]n,©,çmfvfŠf“f^î•ñ[]n[]m[]U[]x[]n,đŠ],«,Û,·B[]mf[]fg,Ö^{1/4}Û^óü,·,é[]n,đŽg—
p,μ,½[]é[]#[]A^óü[]—¹,Û,ÁŽšŒ,â,©,©,é,±,Æ,^â,è,Û,·B,»,l[]é[]#,l[]A[]mfXfv[]f<'t,ÉfWf#fu,đ^óü,·,é[]n,đ,²
Žg—p,,^{3/4},³,ç[]B

^óü,μ,Ä,ç,È,ç,ì,ÉfvfŠf“f^,ìmf[]f^nf%of“fv,“_“”,,é

n fvfŠf“f^,Æ’o•ûCEü’ÊM,ðs,Á,Ä,ç,Ü,·B

^óüžž^ÈŠO,ÉfvfŠf“f^,ìmf[]f^nf%of“fv,“_“”,μ,Ü,·,ªA,±,ê,í^óüff[]f^,Å,Í, ,è,Ü,¹,ňBŽ©“@“I,ÉÁ”
,μ,Ü,·B

16frfbfgWindowsfAfvfŠfP[fVf†f“,ĀfvfŠf“f^Ÿ’è,ā,Ā,«,È,č^óü,ā,Ā,«,È,č

n fvfŠf“f^,ìÚ’±æ,āLPTN1,É,È,Ā,Ā,č,Ü,·B


Ā^è•”,ì16frfbfgWindowsfAfvfŠfP[fVf†f“,Ā,íAfvfŠf“f^,ìÚ’±æ,āLPTN1,É,È,Ā,Ā,č,é,ÆA^óü,âfvfŠf“f^Ÿ’è,ā,Ā,«,È,čê†,ā, ,è,Ü,·B,±,ì,æ,æ,ĒfvfŠfP[fVf†f“,đ,“Žg,č,ìê†,íAfvfŠf“fgf}f[fWffă,ĀALPTN1,ÉÚ’±,μ,Ā,č,éfvfŠf“f^,đ^ŽŽ“l,ÉLPT1,ÉÚ’±,μ,Ā^óü,μ,Ā,-³/₄,³,čB

ŽQÆ

[PrintAgent.Ā.ĭf\[fq.ìŸ’è](#)

PSW,ìfvf[]fpfefB[]APrintAgent,ìfvf[]fpfefB,ì[]Ý'è,³ŽÝ%ñf[]fOfIf“Žž,É”½%of,³,è,È,ç

n ft[][fUCE CEÀ,³[]mGuests[]nfCEfxf<,É,È,Á,Ä,ç,Û,·[]B

[]mft[][fU[][f}f[][fWff[]n,Á[]Ý'è,³,è,Ä,ç,éft[][fUCE CEÀ,³[]mGuests[]nfCEfxf<,ìft[][fU,³f[]fOfIf“,μ,½,Æ,«,É[]AP
SW,ìfvf[]fpfefB[]APrintAgent,ìfvf[]fpfefB,É'í,μ,Äft[][fU,³[]s,Á,½•ï[]X,í[]AZÝ%ñf[]fOfIf“Žž,É,í”½
%of,³,è,Û,¹,ñ[]BfVfXfef€ŠÇ—[]ŽÖ,É,²~A—[],,³/₄,³,ç[]B

^óüff[f^,^fvfšf“f^,ÉŽc,Á,Ä,ç,éê†

n fn[fhfffBfXfN,ìó,«—e—Ê,â'«,è,È,ç,½,ß,É³,μ,ç^óüff[f^,âi—,Á,«,Û,¹,ñ,Ä,μ,½B

fvfšf“f^,ìmf[f^nf%of“fv,a“_““,μ,½,Û,Û^óü,âi—¹,μ,È,çê†,íAfn[fhfffBfXfN,ìó,«—e—
Ê,ðŠm”F,μ,Ä,,¾,¾,çB<ó,«—e—Ê,â,È,çê†A•s—v,Ëftf@fCf<,ðíœ,μ,Ä<ó,«—e—
Ê,ð’â,â,μ,Ä,©,çA^óü,μ,È,,μ,Ä,,¾,¾,çBfvfšf“f^,ÉŽc,Á,Ä,ç,é-ç^óüff[f^,íAfvftfgfXfCfbf`,ð
%oY,μ,È,â,ç”rofXfCfbf`,ð%oY,μ,ÄAfvfšf“f^”à,ÉŽc,Á,Ä,ç,é-ç^óüff[f^,ð^óü,μ,Ä,,¾,¾,çB

,²’^ó

n ,”Žg,ç,É,È,Á,Ä,ç,éfvfšf“f^,É,æ,Á,Ä,íA•Ž,³,è,éfbfZ[fW,,æ,Ñ”r□o•û-@,â^Û,È,éê†,â, ,è,Û,·B□Ú,μ
,,ífvfšf“f^,ìf□[fU□[fyf]fjf...fAfx,ð,²—,¾,¾,çB

^óüfjfo, aîi- , 3, ê, È, ç

n fT[fxfX, aŠjŽn, 3, ê, Ä, ç, È, çB

ŠjŽn, ., é, È, íA mfRf“fgf[f<fpf]f<n[mfT[fxfXn, Å"NEC Printing Information Logger" , ðŠjŽn, µ, Ä, - , 3/4, 3, çB ŽŸ%ñWindows NT<N“®Žž, ÉZ©“®“l, ÉŠjŽn, ., é, È, ímfXf^ [fgfAfbfvn[mfXf^ [fgfAfbfv, ìŽí— pñ, ðmŽ©“®ñ, É, µ, Ä, , 3/4, 3, çB

n mPrintAgent, ìfvf[fpfefBn[mLANf{[fhŽg—pŽž, ìPSW, ì•Ž!ñ, a m’—M|—¹, Ü, Å•Ž!ñ, Æ, È, Ä, Ä, ç , éB

mPrintAgent, ìfvf[fpfefBn[mLANf{[fhŽg—pŽž, ìPSW•Ž!ñ[m^óüi—¹, Ü, Å•Ž!ñ, É, µ, Ä, - , 3/4, 3, çB

»•ifTf|f|fg

NECvfŠf“f^,ÉŠÖ,·,é,²Žĵ-âE,²’Š’k,íANEC Bit-INN,“,æ,Nĭ“-ŽĐŽw’è,ìfT[frfX’<ĈĖû,Ā,“Žó,¯,μ,Ä,č
,Û,·B,Û,½<Zp“l,È“à—e,ì,²Žĵ-âE,²’Š’k,íANECfpfVrf“fCf“ftfHf[fVf#f“fZf“f^ [É,²~A—,¾,³,čB

ã<L’<ĈĖû,ì“d”b”Ô+AZó•tŽžŠÔ,É,Ā,č,Ä,ÍA[uNECfT[frfX-Ô^ê—•\v,đ,²—,¾,³,čB
fvfŠf“f^,ìft[fU[fYf}fjf...fAf<à, ,í,¹,Ä,²ŽQAE,,¾,³,čB

,Û,½AfpfVrf“î•ñfT[frfX,đŽg,Ā,ÄANECvfŠf“f^,ÉŠÖ,·,éĀVî•ñ,đ“üžè,·,é,±,Æ,³,Ā,«,Û,·B
Û,μ,,Íuf+ [fU[fYf}fjf...fAf<v,ìuî•ñfT[frfX,É,Ā,č,Äv,đŽQAE,μ,Ä,,¾,³,čB

fjXf^f€fCf“fXfg[]f<,Æ,ÍAf|fbfgf[][]fNfT[]fo,©,çPrintAgentf\
ftfgfEjFfA,đfCf“fXfg[]f<,·,éêëñ,ÉAfCf“fXfg[]f<,ìĈ`'Ô,đ'Ì,Ô,±,Æ,³,Å,«A»,±
,ÅmfjXf^f€n,đ'Ì'đ,μ,½êñ,ìfCf“fXfg[]f<•û-@,ì,±,Æ,Å,·B

fqf“fg

f|fbfgf[][]fNfT[]fo,©,çfCf“fXfg[]f<,·,é•û-@,É,Â,ç,Ä,ÍAf+[]fU[]fYf}fjf...fAf<“™,đŽQ[]Æ,μ,Ä,,¾,³,çB

fšfvfšf“fg, ì, ½, ß, Éfn□[fhffBfXfN, É•Ú‘¶, ³, ê, ½^ó□üfhfLf...f□f“fg, ì, ±, Æ, Å, ·□B

«»Ÿ,ìŸ'è,ð-³«ø,É,μ,Äf_fCfAfffO,É-ß,è,Û,·B

'O%ñ,ìÝ'è,ì,Ü,Üf_fCfAf_fO,đ!—¹,μ,Ü,·B

«»Ÿ,ìŸ'è,ð-³«ø,É,μ,Ä""l,ìŸ'èf_CfAf_fO,É-β,è,Ü,·B

Žw'è,³,ê,½ftfHf<f_,Æ,»,ìÅ'â'l,ÅÝ'è,μAÝ'èf_cfAfffO,É-β,è,Û,·B

%º,ìfšXfgf{fbfNfX,Åvf%oCfx[]fgfXfv[]f<ftf@fCf<,ðŠi"[.,éfffBfCefNfgfŠ,ðŸ'è,µ,Û,·B

fqf“fg

n fvf%oCfx[]fgfXfv[]f<ftf@fCf<,.Æ,Í[]Afšfvfšf“fg,ì,½,ß,Éfn[]fhfffBfXfN,É•Û'¶,³,è,½^óüfhfLf...f[]“fg,ì,±
,Æ,Å,·B

fvf%oCfx[]fgfXfv[]f<ftf@fCf<,đŠi"l,.,éfffBfĀfNfgfŠ,Å,·□B

fqf“fg

n fvf%oCfx[]fgfXfv[]f<ftf@fCf<.,Ā,Í□AfŠfvfŠf“fg,ì,½,ß,Éfn[]fhfffBfXfN,É•Ů‘¶,³,e,½^ó□üfhfLf...f□f“fg,ì,±
,Ā,Å,·□B

fvf%oofCfx[]fgfXfv[]f<ftf@fCf<,đŠi"l,.,éfffBfĈefNfgfŠ,đ□Ý'è,μ,Ü,.□B

fqf“fg

n fvf%oofCfx[]fgfXfv[]f<ftf@fCf<.,Ā,Í□AfŠfvfŠf“fg,ì,½,ß,Éfn□[fhfffBfXfN,É•Ū‘¶,³,è,½^ó□üfhfLf...f□f“fg,ì,±
,Ā,Ā,.□B

%°,)fRf“f{fbfNfX,Åfhf%ofCfu,δ•İ□X,μ,Ü,·□B

fhf%ofCfu,đ•İX,μ,Ü,·B

fOj<[]fvfjŤf^,Æ,í[]AfvfŤf^Ž©“®[]Ø'Ö<@“\,đ—~—p,·,é,½,ß,ìfvfŤf^,Å,·[]B

1999/12/10 kenji

