

, Žg, ç, É, È, é, O, É

“® ì Š Â <<
<N“ ® • û - @

“®”ŠĀ<<

Win32 ,ifvfOf%of€,đ“®”ŠĀ<<,1,é,±,Æ,ì,Ā,«,éŠĀ<<,a•K—v,Ā,·B
%o<L,ŠĀ<<,Ā,Ī“®”ŠĀ<<,F,μ,Ā,ç,Û,·B

ŠJ”ŠĀ<<™,í^È%o,ì’Ê,è,Ā,·B

ŠJ”ŠĀ<<

Žg—pfRf“fpfCf%o Microsoft Visual Basic 6.0(SP2)
,n,r Windows98
ŠJ”fVf“ NEC PC-9821 V200/SZ
96MB-RAM

ŠJ”ŠĀ<<”FŠĀ<<

,n,rWindows98
fVf“ NEC PC-98NX V26D
128MB-RAM

,n,rWindows98
fVf“ DELL OptiPlex Gxa
160MB-RAM

,n,rWindows NT4.0(SP4)
fVf“ Gateway GP6-400C
128MB-RAM

,n,rWindows95 Build950B
fVf“ Fujitsu FMV-5100D5
32MB-RAM

<N“®•û-@

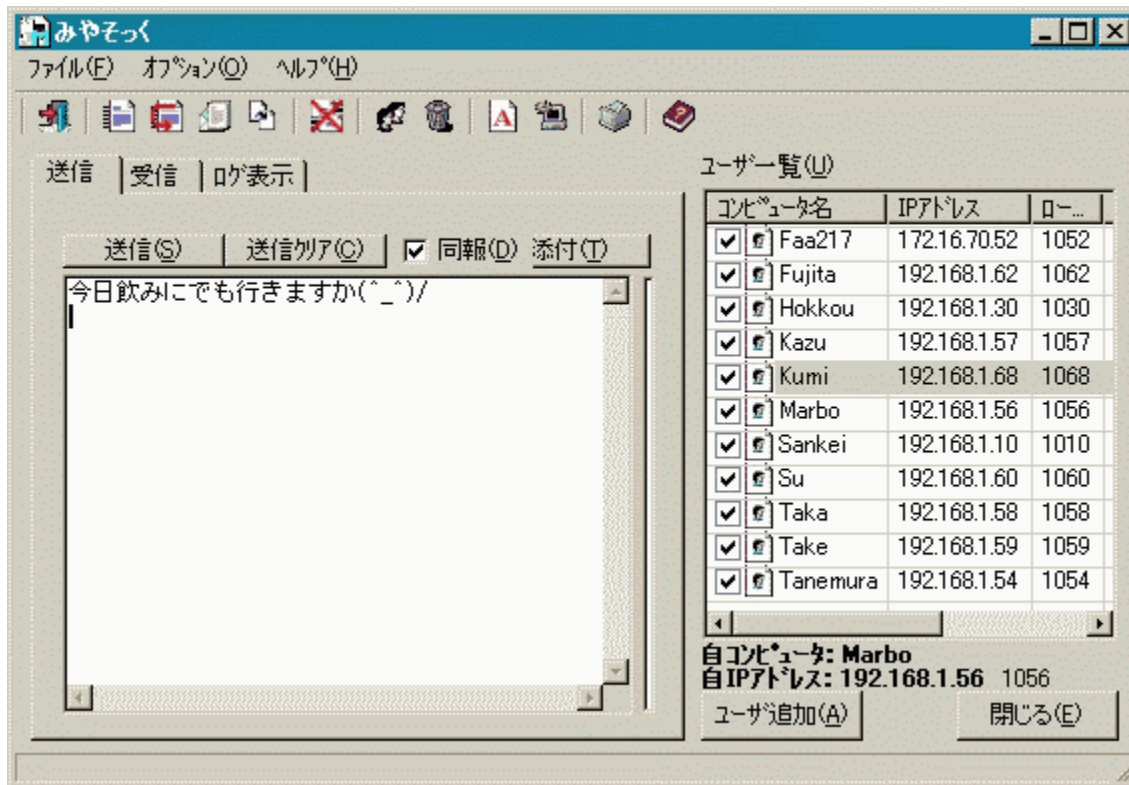
□@□y,Ý,â,»Á,□z ,đŽÀ□s,·,é,É,Í□CfXf^□[fgf□fjf...□[“™,É“o~^,·,é,©□CfGfNfXfvf□□[f%“™,}fvf□fOf
%of€ŽÀ□s<@“\,đŽg—p,μ,Ä,,³/₄,³,¢□B
Windows95/98/NT4.0 ,Å,ÍfXf^□[fgf□fjf...□[É“o~^,μ,¹/₂,è□CfVf#□[fgfjfbfg,đ□i□-,·,é,±
,Æ,É,È,é,Å,μ,â,¤□B

%oæ-Ê,İŞe•”,ìà-¾

fCf“fEfCf“fhfE

f[]fCf“fEfCf“fhfE

[]@Šî-{"l,É,Í^È%º,ì,æ,ɤ,È%ºæ-Ê,ª•\Žì,³,ê,Ü,·[]B



[]y’—[]Mf^fu[]z

[]@[]E’—[]Mf[]fbfZ[]fW

[]@[]@[]|’—[]Mf[]fbfZ[]fW,ð“ü—í,μ,Ü,·[]B

[]@[]E’—[]M

[]@[]@[]|f[]fbfZ[]fW[]i<y,Ñ“Y•tftf@fCf<[]j,ì’—[]M,ð[]s,ç,Ü,·[]B

[]@[]E’—[]MfNfŠfA

[]@[]@[]|“ü—í,μ,½’—[]Mf[]fbfZ[]fW,ð[]Á<Ž,μ,Ü,·[]B

[]@[]E“~•ñ

[]@[]@[]|“ü—í,μ,½f[]fbfZ[]fW[]i<y,Ñ“Y•tftf@fCf<[]j,ðft[]fU^ê—,É•\Žì,³,ê,Ä,ç,é’Sft[]fU,É’—[]M,μ,Ü,·[]B

[]@[]@[]|@[]|’~•ñŽwŽì,í[]A’—[]MCEã[]%Šú%º».,³,ê,Ü,·

[]@[]E“Y•t

[]@[]@[]|’—[]M“Y•tftf@fCf<,ðŽw’è,μ,Ü,·[]B

[]yŽó[]Mf^fu[]z

[]@[]EŽó[]Mf[]fbfZ[]fW

[]@[]@[]|Žó[]M,μ,½f[]fbfZ[]fW,ð•\Žì,μ,Ü,·[]B[]ifpfXf[]f[]fhf[]fvfVf[]f“,ªŽw’è,³,ê,Ä,ç,é,é[]ê[]#,lfpfXf[]f[]fh“ü—íf_fCfA[]f[]O,ª•\Žì,³,ê,Ü,·[]j

[]@[]EŽó[]MfNfŠfA

□@□@□|Žó□M,μ,½f□fbfZ□[fW,đ□Á<Ž,μ,Û,·□B

□yf□fO•\Ž!f^fu□z

□@□E□f□fO“Ç,Ý□ž,Ý

□@□@□|“—“ú,lf□fOftf@fCf<,đ“Ç,Ý□ž,Ý,Û,·□B

□@□E%oß<Ž,lf□fO

□@□@□|%oß<Ž,lf□fOftf@fCf<,đžw'è,μ“Ç,Ý□ž,Ý,Û,·□B

□@□E□f□fO□í□œ

□@□@□|•\Ž!'t,lf□fOftf@fCf<,đí□œ,·,é□B

□y,»,ì'¼□z

□@□Eft□[fU^ê—

□@□@□|'—□M,·,éft□[fU^ê—,đ•\Ž!,μ,Û,·□B

□@□@□@□|!^ê—,ì“à—e,í□A□ufRf“fsf...□[f^-¼□v□uf□[fU-

¼□v□u,h,ofAfhfCEfX□v□u“Y•tftf@fCf<'—□M□æ<α—LftfHf<f_□v□uf□□[ffj<f|□[fg“Ô□+□v,Æ,È,è,Û,·□B

□@□E•Â,¶,é

□@□@□|□Ă□—%o»,μ,Û,·□B

□œ□y,Ý,â,»,Á,□zŽ©'ì,đ□l—^{1,3,1},é□ê□‡,í□Af^fXfNfgfCEfC,ìfAfCfRf“,đ%oEfNfŠfbfN,μf□fjf...

□[.æ,è'l'đ,·,é,©□A□y,Ý,â,»,Á,□z%oE□ă,ì□u□~□v^ó,đfNfŠfbfN,μ,Â%o^{o,3},ç□B

ŠeŽí,ì<@"\,É,Â,ç,Ä

'—□M

Žó□M

ft□[fU'Ç%oÁ

Ž©fRf"fsf...□[f^,ì□Y'è

"Y•tftf@fCf<

Žó□M%o¹,ì□Y'è

Žó□Mftf@fCf<^è—

'Ê□Mf□fO,đ•Ů'ŕ,.,é

'—□M

□@f□fbfZ□[fW,ì'—□M,ð□s,ç,Û,·□B

ft□[fU^ê—,æ,èf□fbfZ□[fW,ð'—

□M,·,éft□[fU,ð'l'ð,μ,Û,·□if`fFfbfNf{fbfNfX,ðfNfŠfbfN,·,é,Æ"Ú"f}□[fN,^a•t,«,Û,·□j□B

□i•i□"ft□[fU'l'ð%Å□j

□u"~•ñ□vf`fFfbfNf{fbfNfX,ðf`fFfbfN,·,éŽ-,É,æ,è'Sft□[fU,Éf□fbfZ□[fW,^a—□M,³,è,Û,·□B

□i,±,ì,Æ,«ft□[fU^ê—,æ,è'—□Mft□[fU,ð'l'ð,μ,Å,à-³Æø,Æ,É,è,Û,·□j

□u'—□M□vf{f^f",ð%Ÿ%°°,·,é,±,Æ,Å'—□M,^aŠjŽn,³,è,Û,·□B

ŽóM

@fbfZ[fW,đŽóM,μ,Û,·B

uŽóMfNfSfA[v,đ[s,í,È,çCEÀ,èŽóM,μ,½fbfZ[fW,ÍŽc,è,Û,·B

iI—¹Žž,É'S,ÄÁ<Ž,³,ê,Û,·j

fbfZ[fW,ìæ^a,É,ÍAZóMZž<y,Ñ'—Mft[fU-¼,^a•\Ž,³,ê,Û,·B

®A[u'ÉMfO,đ•Û'¶,·,évfIfvfVfƒ",đŽg—p,·,é,±,Æ,É,æ,èfO,ì•Û'¶,^a%oÂ"\,Æ,È,è,Û,·B

ft[fU'Ç%Á

[@'Éí,íu,Ý,â,»Á,v<N" ©ft[fU,æ,èft[fUî•ñ,â'—
M,³,êŽ©"®"I,É"o~^_^XV,³,ê,Ü,·B

@ft[fU,ì'Ç%Á,ðs,ç,Ü,·B
ufRf"fsf...[f^-¼v<y,Ñu,h,ofAfhfÇfXv,ð"ü—í,μ,Ä%⁰,³,çB
ufRf"fsf...[f^-¼v"ü—Íf{fbfNfX%⁰E,Íf{f^f",ð%⁰Ÿ%⁰,·,é,±,Æ,ÅfIbfbgf[fNfRf"fsf...[f^,ì^ê
—,ª•\Ž!,³,ê,Ü,·B
•\Ž!,³,ê,½^ê—,æ,è'l'ð,à%⁰Ä"\,Ä,·Bij,±,ìêê±A,h,ofAfhfÇfX,ÍŽ©"®,ÅÇÿo,³,ê,Ü,·j

@"o~^ft[fU[,ìííœ,íííœ,·,éft[fU[,ð'l'ðÇäA,c,d,kfL[,ð%⁰Ÿ%⁰,·,é,©fíjff...
[.æ,èufí[fUíííœv,ð'l'ð,μ,Äs,Ä,Ä%⁰,³,çB

Ž©fRf“fsf...[]f^,ì[]Y'è

[]@Ž©fRf“fsf...[]f^,đŽw'è,μ,Ü,·[]B'Ê[]í,íŽ©“®“l,É[]Y'è,³,ê,Ü,·[]B
[]Y'è•ù-@,í[]A“o~^,μ,½ft[]fU^è—[]ã,ÅŽ©fRf“fsf...[]f^,Æ,È,é[]s,đ'l'đ,μ[]A'±,¯,Äf}fEfX,Å
%°EfNfŠfbfN,μ,Ä[]uŽ©fRf“fsf...[]f^,Æ,μ,Ä“o~^[]v,đ'l'đ,μ,Ä%°°,³,ç[]B[]y,Ý,â,»,Ä,[]z%°E
%°°,ì[]uŽ©fRf“fsf...[]f^-¼[]v[]u,h,ofAfhfÆfX[]v—“,ÉŽw'èfRf“fsf...[]f^[]î•ñ,^a•\Žl,³,ê,Ü,·[]B

“Y•tftf@fCf<

□@f□fbfz□ifW'—□MŽž“~Žž,É'—□M,đ□s,ɤftf@fCf<,đŽw'è,μ,Û,·□B
□æŽw'è•û-@

□@,P□DfifvfVfjf“f_fCfAf□fO,lf+□[fU□î•ñf^fu,É,Ä“Y•tftf@fCf<,l<ɤ—LftfHf<f_-¼,đ□Ý'è,·,é□B
□@□@□iŽó□MŽž,İŠî-**{ftfHf<f_,Æ,È,è,Û,·□B□ul|fRf“fsf...□[f^~¼|<ɤ—L-¼|□v,ìĀ`Ž®,Å“o~^,μ,Ä**
%o²,³,ç□B“o~^,μ,½<ɤ—L-¼,Í□u,Ý,â,»,Ä,□v<N“®ŽžŠefNf%ofCfAf“fg,É'—Žó□M,³,è,Û,·□B□j

□@,Q□D□u“Y•t□vf{f^f“%oÿ%o²,É,æ,è“Y•tftf@fCf<,đ'l'đ,·,é□B
□@□@□@□šffftfHf<fg,lf+ftf@fCf<'l'đf_fCfAf□fO,ª•\Ž|,³,è,Û,·,ª□AfifvfVfjf“ ,æ,è□u“Y•tftf@fCf<'l'đ,Í□é
—pf_fCfAf□fO,đŽg—p,·,é□v,đ'l'đ,·,é,±,Æ,ÄftfHf<f_,àŽw'è%oÄ“,Æ,È,è,Û,·□B
□@□@□@□@□iè—pf_fCfAf□fO,Í•i“fhf%ofCfu□A•i“ftfHf<f_,æ,è•i“ftf@fCf<,ª'l'đ,·,é,±
,Æ,ª,Ä,«,Û,·□j

□æ%ođ□æ•û-@
□@□E%ođ□æ,·,é“Y•tftf@fCf<,đ'l'đ,μ□u,c,d,k□vfL□[,©□A%oEfNfŠfbfN,ÅŠj,ç,½f□fjf...□[.æ,è□u
%ođ□æ□v,đ'l'đ,·,éŽ-,É,æ,è□s,ç,Û,·□B
□@□@□i•i“Žw'è,ª%oÄ“,Å,·□j

ŽóM%o¹,ìY'è

□@f□fbfZ□ifWŽó□MŽž-Â,ç,·,ì,v,`,u,dftf@fCf<,ðŽw'è,μ,Û,·□B□iŽw'è,μ,È,†□ê□‡,íBEEP%o¹,a-
Â,è,Û,·□j

ŽóMftf@fCf<^ê---

□@“Y•tftf@fCf<,ª‘¶□Ý,·,é<κ—LftfHf<f_,ìftf@fCf<^ê---,đ•\Ž! ,μ,Û,·□B
ŽóMftf@fCf<^ê---,©,ç,Í□A□uŠJ,□v□u□í□œ□v□u^Ú“®□v□u‘S,Ä^Ú“®□v□u%đ“€□v“™,©%oÂ“\
,Å,·□B
□‘ĈÉftf@fCf<,ì□u%đ“€□v,đ‘đ,μ,½□ê#□A□V,½,É□‘ĈÉftf@fCf<^ê---,ª•\Ž! ,³,ê,Û,·□B
□@‘□□j□‘ĈÉftf@fCf<,ì%o{---,É,Í•Ě“r
UNLHA32.DLL□AUNZIP32.DLL□AUNARJ32.DLL□ATAR32.DLL□AUNRAR32.DLL□AUNRAR.DLL<y,Ñ
CAB32.DLL ,ª•K—v,Æ,Ě,è,Û,·□B

'ÊMfO,ð•Û'¶,·,é

@fbfzW'—ŽóMžfO,ì•Û'¶,ðs,ç,Û,·B
ufO•Ž!vf^fu,À%{—,à%Å"À,·,·A@fO,ìÉ`Ž®,ðH.Shirouzu"i"...É[íjŽ,ìulP
Messenger for Win32v,É, ,í,¹,Ä, ,è,Û,·,ì,ÅŠp“cŽ;~NŽ,ìulPmsgViewv,ðŽg—p,μ,Ä,ì%{—
,à%Å"À,·,·B

,» ,l'¼

'~ñCE ,É,Â,ç,Ä

"]ñÚ,É,Â,ç,Ä

ŽŒ«

.Ý,âfVfŠñ[fY,ì,²ñÐ%oî

ŠeŽíDLL,ì"üŽè•û-@

'~`iCE ,É,Ä,ç,Ä

□@□y,Ý,â,»Á,□z□i,Æ,»ì•t'®•"□j,É,Ä,ç,Ä,ì~`iCE ,í Marbo ,ª•ÚŽ□,μ,Ä,ç,Ü,·□B ,±,ìfvf□fOf%of€
,ìŽg—p,É,æ,Á,Ä□¶,¶,½'¹SQ"™,É,Ä,ç,Ä,í□ìŽÖ,í%½,à•Ú□Ø,·,é<`-±,ð•%o,í,É,ç,±
,Æ,Æ,³,¹,Ä',«Ü,·□BfofO,â—v-],É,Ä,ç,Ä,í,É,é,x,í□^,μ,½,ç,Æ,íŽv,Ä,Ä,ç,Ü,·□B

□@□y,Ý,â,»Á,□z,í Microsoft ŽĐ,ì Visual Basic 6.0 ,Ä□ì□-,³,é,Ä,ç,Ü,·□B□],Á,Ä□C□y,Ý,â,»Á,□z,í
Microsoft Visual Basic 6.0□iSP2□j ,ìf%of"f^fCf€f%ofCfuf%ofŠ,ð•K—v,Æ,μ,Ä,¨,è□C,±
,ì•"•ª,É,Ä,ç,Ä,í Microsoft ŽĐ,ª'~`iCE ,ð•ÚŽ□,μ,Ä,ç,Ü,·□B

“]Ú,É,Â,ç,Ä

@MIYASOCK.EXE ,íftfš[f\ftfgfEjFfA,Ä,·B Žg—
pC“]ÚC<y,Ň”z•z,ÉŠÖ,μ,Ä,Í“Á,É\$CEÀ,Í•t, ,Ü,¹,ňB,^{1/2},^{3/4},μC“]ÚE”z•z,·,éê±,ÉCf[]ffBfA’
ã“™^Éã,ìŽè”—¿,đ’¥Žû,μ,^{1/2},èŽg—p,É\$CEÀ,đ•t, ,é,±,Æ,Í,±
,é,đ<Ö,¶,Ü,·B,Ü,^{1/2}C“]ÚE”z•tžž,É’ÆÉftf@fCf<y,ŇŠi”[ftf@fCf<,đ%ü•İ,·,é,±,Æ,àC,±
,é,đ<Ö,¶,Ü,·B

@Ž-Æã,Ä,à\,ç,Ü,¹,ň,ì,Ä“]Úæ,ì~A—,đ,“Šè,ç,μ,Ü,·B,^{1/2},^{3/4},μC’Đ“™,Ö,ìCfÚ,âžû~^Cf\ftfg,Ö,ìfof“fhf<“™]x—p-Ú“l,ìê±,ÍC•K, Ž-’O,É~A—,•K—v,Æ,È,è,Ü,·B

ŽÓŽ«

□@^È%º,ÌŠF—l,ì<|—í□EŽx%º‡,ì,¨,©,°,Å □y,Ý,â,»Á,□z ,ðì□¬,·,é,±,Æ,ª,Å,«,Ü,µ,½□B—L,è“i,κ
,²,´,ç,Ü,µ,½□B

□ECAB32.DLL ,đŠj” ,³,ê,½<{“à-M□°Ž□□B
□EUNZIP32.DLL ,đŠj” ,³,ê,½ shoda.T Ž□□B
□EUNLHA32.DLLκUNARJ32.DLL ,đŠj” ,³,ê,½ ,l,%º,f,f,□Ž□□B
□ETAR32.DLL ,đŠj” ,³,ê,½ <g%ºª □P•vŽ□□B
□EUNRAR32.DLL ,đŠj” ,³,ê,½ <T^ä “N-íŽ□□B
□EUNRAR.DLL ,đŠj” ,³,ê,½ Eugene RoshalŽ□□B
□EIP Messenger for Win32 ,đŠj” ,³,ê,½ H.Shirouzu□i”□...Æ[□í□jŽ□□B
□EIPmsgView ,đŠj” ,³,ê,½ Šp“cŽj”NŽ□□B
□EfÀ”Å,í•j%º¿,đ,µ,Á’ ,ç,½ <g’q□f,æ,µ,o□,„—TŽmŽ□□B

Ÿ,âfvfš[fY,ì,²Ð%oî

ï;ùòì,ìftfgŸ,Ÿ,âfvfš[fYz,ð,²Ð%oî,³,¹,Ä,ç,½,¾,«,Ü,·B

ï@œ,Ÿ,â,î,Ä,ŸyŠÉ'PfofbfNfAfbfvz **Free**

ï@ftf@fCf<,lfofbfNfAfbfv,ðfpf^ [f"-^,É,Æ,é,±,Æ,â,Ä,«,Ü,·

ï@œ,Ÿ,â,Ö,ñ'¼yftf@fCf<•âŠ,,E~ACE<z **Free**

ï@ftf@fCf<,î•âŠ,,E~ACE<,ðs,xfç [f<,Ä,·

ï@œ,Ÿ,â,ß,É,ã`Ÿy'½<@"\f%of"f`ff [z **Free**

ï@fhf%ofbfO•fhf [fbfv,E'î%ož,µ,½f^fCf<CE^'½<@"\f%of"f`ff [Ä,·

ï@œ,Ÿ,â,ß,É,ã`QŸy'½<@"\f%of"f`ff [z **Free**

ï@fhf%ofbfO•fhf [fbfv,E'î%ož,µ,½f {f^f"CE^'½<@"\f%of"f`ff [Ä,·

ï@œ,Ÿ,â,³` ,;yftf@fCf<CEÿö [z **Free**

ï@ftf@fCf<,lCEÿöfc [f<,Ä,·

ï@œ,Ÿ,â,@,ê,Ä,ÖŸyCEÿö [ê%Èz **Free**

ï@ftf@fCf<'t,l•Ÿš—ñCEÿöfc [f<,Ä,·

ï@œ,Ÿ,â,«,á,Ä,ÖŸy^ê"flffvf`ff [z **Free**

ï@fXfNfš [f" ,lflffvf`ff,ðs,çfvfšf" f^<y,ñftf@fCf< [o—í,·,éfc [f<,Ä,·

ï@œ,Ÿ,â,ß,Ä,i,Ÿyf}f<f`f [fffBfAfvfCE [f,, [z **Free**

ï@%¹SyCD [AMIDI [AAVI [AWAVEftf@fCf<,ðÄ [Ÿ,·,é}f`f [fffBfAfvfCE [f,, [Ä,·

ï@œ,Ÿ,â,»Ä,ŸyNet,Ä,Đ,»Đ,»z **Free**

ï@flfbfg [fNã,Äf [fbfz [fW,ì'—Žó [M,ðs,xfftfg,Ä,·

ï@œ,Ÿ,â,·,½,Ä,ÖŸy•Ö—~ÈfXf^ [fgfAfbfvfc [f<z **Free**

ï@fXf^ [fgfAfbfv,ì•â•fc [f<,Ä,·

ï@œ,Ÿ,â,Ñ,ã` ,Ÿyf}f<f`frf... [fA [z **Free**

ï@%æœff [f^"™,ð•\Z!,·,é}f`f`frf... [fA,Ä,·

ï@œ,Ÿ,â,î,Ä,ñŸy'! [z%ð"€z **Share**

ï@fGfNfXfv [f%of%ofCfN,Éft [fUfCf" f^ftf [fX,ðž [Ä,½fA [fjfcfc [f<,Ä,·

ï;^È%² [ANifty-Serve ,æ,è Download ,Ä,«,Ü,·B

ï@u,Ÿ,â,î,Ä,,ñŸy'! [z%ð"€z [vFWINAL LIB4 ,l [s±°Ÿ²Ép [t

ï@u,Ÿ,â,ß,É,ã` Ÿy'½<@"\xYÁ-°z [vFWINAL LIB5 ,l [s×YÁ-° [t

ï@u,Ÿ,â,ß,É,ã` ,QŸy'½<@"\xYÁ-°z [vFWINAL LIB5 ,l [s×YÁ-° [t

ï@u,Ÿ,â,î,Ä,ŸyŠÉ'PÉP` ,±`ìß [z [vFWINAL LIB2 ,l [sDISK/FILE'€ [z [t

ï@u,Ÿ,â,Ö,ñ'¼Ÿyìš²Ü•âŠ,,¥~ACE< [z [vFWINAL LIB2 ,l [sDISK/FILE'€ [z [t

ï@u,Ÿ,â,³` ,;Ÿyìš²ÜCEÿö [z [vFWINAL LIB2 ,l [sDISK/FILE'€ [z [t

ï@u,Ÿ,â,@,ê,Ä,ÖŸyCEÿö [ê%Èz [z [vFWINAL LIB2 ,l [sDISK/FILE'€ [z [t

ï@u,Ÿ,â,Ñ,ã` ,ŸyìÜÄÉP°± [z [vFWINAC LIB5 ,l [s•\Z!±,¾» [t

ï@u,Ÿ,â,«,á,Ä,ÖŸy^ê"-ìßÄ- [z [vFWINAC LIB8 ,l [sÄP½,Ä`ìßŠÄ<< [t

ï@u,Ÿ,â,·,½,Ä,ÖŸy•Ö—~È,½Ä°Ä±`ìßÄ°Ü [z [vFWINAC LIB8 ,l [sÄP½,Ä`ìßŠÄ<< [t

Ⓜ@Ⓜu,Ý,â,ß,Å,i, ⓂyĪÜÁÒÃP“ ±İßÚ°Ô°ⓂzⓂvFWINMM LIB3 ,İsĪÜÁÒÃP“ ±İßÚ°Ô°Ⓜt
Ⓜ@Ⓜu,Ý,â,»Á,ⓂyNet,Å,Đ,»Đ,»ⓂzⓂvFWINCOM LIB4 ,İs'ÉⓂMÃ°ÜⓂt
Ⓜ@ⓂuVB5×ÝÁ²NⓂWⓂy,Ý,â¼Ø°½P<N“ ®—pⓂzⓂvFWINAL LIB11 ,İsDLL/OCXⓂt

Ⓜ;Ⓒ»ⓂYⓂAfcf“f^Ⓜ[f]fbfgⓂã,Å,à^È%°°,İfTfCfg,Å DownLoad ,Å,«,Ü,·ⓂB
Ⓜ@ⓂyVector Software PACKⓂz
Ⓜ@Ⓜ@<http://www.vector.co.jp/vpack/browse/person/an011994.html>
Ⓜ@ⓂyftfSⓂ[f]ftfgŽŽ,μ,ÅfKfbfef“Ⓜz
Ⓜ@Ⓜ@<http://www.inh.co.jp/~kei/>
Ⓜ@Ⓜy'<,İ“mⓂz
Ⓜ@Ⓜ@<http://www.forest.impress.co.jp/>

Ⓜš,²—v-]ⓂAfofo•ñⓂⓂA,»İ'¼-â,çⓂ‡,í,¹“™,²,´,ç,Ü,μ,½,ç^È%°°,İ^¶Ⓜæ,ÅŽó,¯•t,¯,Ä,¯,è,Ü,·ⓂB
Ⓜ@<mailto:marbo@bea.hi-ho.ne.jp>
NiftyServe:XLK06234

ⓂyⓂÅⓂV”Å,İ“üžèⓂæⓂz
Ⓜ@Ⓒ»ⓂYⓂA^È%°°,İfTfCfg,É,ÄⓂÅⓂV”Å,ðf_fEf“fⓂⓂ[fh,·,é,±,Æ,ª,Å,«,Ü,·ⓂB

Ⓜ@Ⓜy**Marbo's Room**Ⓜz
Ⓜ@Ⓜ@URL:<http://www.bea.hi-ho.ne.jp/marbo/>

ŠeŽíDLL,ì“üŽè•û-@

“-ŠYfwf<fv,ì†,Å“o□è,·,éDLL—p,í□Afpf\frf“’É□Mflfbfgf□□[fn□ufjftfefBfT□[fu□v,ì%°°<LftfH□[f%°f€
,æ,è“üŽè,·,é,±,Æ,^a,Å,«,Ü,·□BfjftfefBfT□[fu,É□Ú’±Æã□A□uGO WINFF□v,Æ“ü—
Í,μ□ACEÿ□õfl□[,ðŽw’è,μ,ÄCEÿ□õ,μ,Ä,,³/₄,³,†□B

UNLHA32.DLL, ZIP32J.DLL, UNARJ32.DLL, UNZIP32.DLL, TAR32.DLL, CAB32.DLL, UNRAR32.DLL, IS
H32.DLL

□;□ã<L•K—v,É DLL ,í□A□y“□□#fA□[fjfcfofvf□fWfFfNfg□z
□@□@<http://www.csdinc.co.jp/archiver/>, ©,ç,à□Å□V”Å,^a“üŽè,Å,«,Ü,·□B

