

xf" f } [fNfvf fOf%of€ 22- {

ŠeŽifxf" f } [fN AfVfXfef€ î•ñ•Ž!f!ftfgfEfFfA,Å,•B



WCPUID.EXE Version 2.10 for Win32 UP!

© 2000-2001 F.H. Oda! Ž

© 2000-2001 © <http://www2.tky.3web.ne.jp/~nrklv/>

Windows 95/98/NT 4.0 Ā, Ā ACPU, lfNf fbfN Žü" g" "A, ", æ, NMMXfefNfmf fW, â, A3D Now! fTf| [fg, l—L-
³, ð' a' è, ., éfvf fOf%of€, Å, •B



3DMark 99

© 2000-2001 Futuremark Software Corporation, Ltd.

© 2000-2001 © <http://www.3dmark.com/>

3D • %œ « "\, ð' a' è, ., éfvf Kfff, •—, lfxf" f } [fNf!ftfg, Å, •B



Final Reality Ver1.01

© 2000-2001 Remedy Entertainment Ltd. & VNU European Labs

© 2000-2001 © <http://www.remedy-ent.com/fr/>

3D, i • %œ « "\, ð' a' è, ., éfvf" f } [fNf!ftfg, Å, •B



HDBENCH(É°ĀpĀp"½ ÍpÝÁ) Ver 2.61

© 2000-2001 EP82%œü/, ©, , Ž

© 2000-2001 © <http://www.lares.dti.ne.jp/~ep82kazu/>

fN [fhfffBfXfN A • %œ ACPU, i' - , ð' a' è, ., éfvf fOf%of€, Å, •B



DDBENCH(DirectDrawÍpÝÁ) Ver 1.41

© 2000-2001 EP82%œü/, ©, , Ž

© 2000-2001 © <http://www.lares.dti.ne.jp/~ep82kazu/>

DirectDraw, i • %œ - "x, ð' a' è, ., éfvf fOf%of€, Å, •B



Diskdrive benchmark on Win32 1.22

© 2000-2001 F'É" c—Y" ñ Ž

<http://www.inco.ne.jp/~tsukada/>

Win32ŠÁ««iWindows 98/95/NT 4.0/NT 3.51j%º,É,“,~,éAfŠf€[]fOfuf<f[]ffBfA,ð,Ó,,PfffBfXfNfhf
%OfCfu,İfpftfH[]f}f“fX,đ‘a’è,.,évf[]fOf%Of€,Á,·B

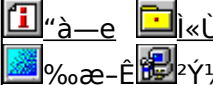


Š”Ž@%oiŽĐfAfC[]Efi[]Efff[]f^<@Ší GaBench Version.1.32

[]@[]@[]\$[]FŠ”Ž@%oiŽĐ fAfC[]Efi[]Efff[]f^<@Ší

<http://www.iodata.co.jp/>

Microsoft Windows95/NT[]ä,Á[]APC,İ•`%ºæ“\—Í,ðCEv‘a,.,é,½,ß,İfVfXfEfffA,Á,·B

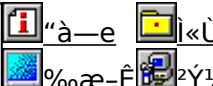


Š”Ž@%oiŽĐfAfC[]Efi[]Efff[]f^<@Ší fAfvfŠfxf“f

[]@[]@[]\$[]FŠ”Ž@%oiŽĐ fAfC[]Efi[]Efff[]f^<@Ší

<http://www.iodata.co.jp/>

Windows 95[]ä,ÁŽA[]Ú,ÉfAfvfŠfP[]fVfj““,ðŽA[]s,µ,½,Æ,«,İfVfXfEffe[]“\,ð•]ºı,.,évf[]fOf%Of€,Á,·B

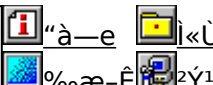


Š”Ž@%oiŽĐf[]f<fR f[]f<fRfxf“f f}[]fN Ver1.30

[]@[]@[]\$[]FŠ”Ž@%oiŽĐf[]f<fR

<http://www.melcoinc.co.jp/>

PC,İ[][]#fpftfH[]f}f“fX,đ‘a’è,.,évf[]fOf%Of€,Á,·B

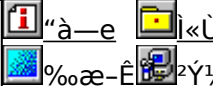


fİEvŽZfvf[]fOf%Of€ []ufX[]fp[]fi Ver 1.1[]v

[]@[]@[]\$[]F“CE<ž‘àŠw<à“cCEx<†Zº

<http://www.cc.u-tokyo.ac.jp/>

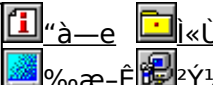
%º~Žü—![]fi[]j,ðCEvŽZ,³,¹,ÁCPU,âf[]f,Š[]AHDD,É,Ç,İ[]“\,ðCEv‘a,.,éfVftg,Á,·B



fQ[]f€—pfOf%OfftfBfbfNxf“f f}[]fNfefXfg GBENCH32 3.0

[]@[]@[]\$[]F,Ú,é,.,ç Ž

fOf%OfftfBfbfN,İ[]“\,đ‘a’è,.,évf[]fOf%Of€,Á,·B

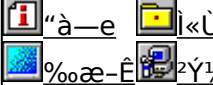


,d,p,t,h,o,X,T[]@for[]@Win32[]@V3.10 []Ž@CEöŠ]”Á

[]@[]@[]\$[]FŠí‘½”T

<http://ring.aist.go.jp/openlab/kitaro/>

CPU[]AHDD[]Af[]f,Š[]AfVfXfEffe,É,Ç[]APC,İ,.,ç,ä,é[]î•ň,İ•\Ž![]Afxf“f f}[]fN,ð[]s,È,xftfg,Á,·B



WHATIDE

Tom Warren Ž

à—e ì«ÙÀp

DOS,ÄIDE,lfhffBfXfN,îî•ñ,ð•Ž!,.éfvfOf%œf€,Ä,·B

²Ý½Ä

fm[fg,o,b—pfobfefSfefXfgvfOf%œf€ Revision 0.21

^ä"Vã ~aOZ

à—e ì«ÙÀp

fm[fgpfRf",lfobfefSŽ'±ŽŽSÖ,ð'a'è,.,éxf"f f}[fNfvfOf%œf€,Ä,·B

%œ-Ê ²Ý½Ä



OpenGL Benchmark

YoccyŽ

<http://www.bekkoame.or.jp/~yoccy/index.html>

à—e ì«ÙÀp

OpenGL,ì` %œ«",ð'a'è,.,é,½,ß,lfvfOf%œf€,Ä,·B

%œ-Ê ²Ý½Ä



OpenGL xYA²Ñ

ŽÒ Silicon Graphics, Inc. "ÚÚAfff,ìî~ ,ä,ç Ž

à—e ì«ÙÀp

OpenGL Benchmark,È,çAOpenGL'î%ž,lfvftg,ì" @ì,É•K—v,Èf%of"f^fCf€f%ofCfuf%ofŠ,ÆA,»,è,ðŽg,Ä,½fff,f%œf€,Ä,·B

%œ-Ê ²Ý½Ä



WinGfpftH[f}f"fxfefXfg GTEST ver.1.2

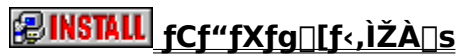
Ü,é, ,ç Ž

à—e ì«ÙÀp

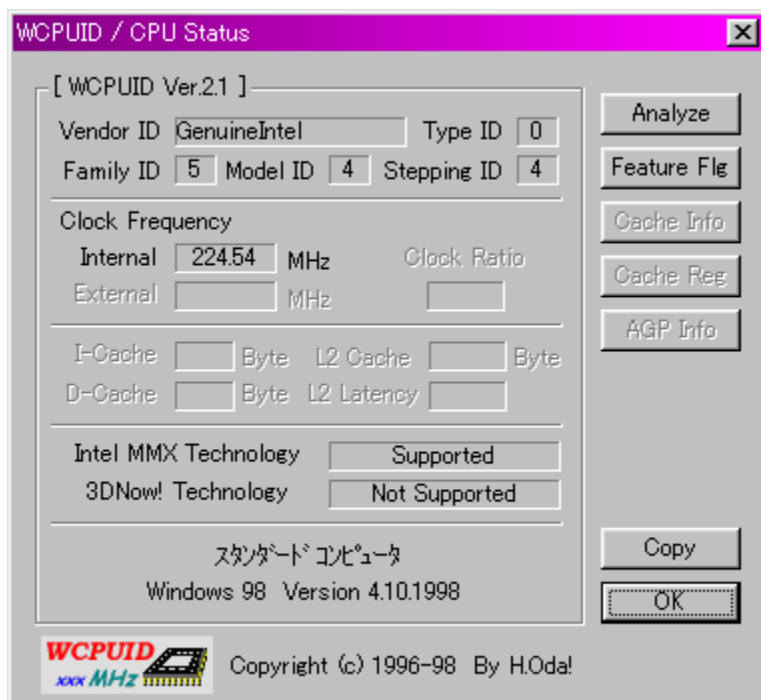
WinG,lfpftH[f}f"fx,ð'a'è,.,éfvfOf%œf€,Ä,·B

%œ-Ê ²Ý½Ä

WCPUID.EXE Version 2.10 for Win32



WCPUID



WCPUID

DISC1:\BENCH\WCPU210



WCPUID

H.Oda!

<http://www2.tky.3web.ne.jp/~nrklv/>

“à—e

Windows 95/98/NT 4.0 ĀACPU, ĩNf ĩbfNžü”g”A, , æ, ŃMMXfefNfmf ĩfW, âA3D
Now ĩfTf ĩfg, ĩ—L-³, đ’^a’è, , éfvf ĩfOf%of€ , Ā, . ĩB
Intel ĩAAMD ĩACyrix ĩAIDT, ĩŠeŽíCPU, É’í%ž, μ, Ā, φ, Ü, . ĩB



@ ĩÚ, μ, . ĩ ĩADISC1:\BENCH\WCPU210\WCPUI.D.TXT, đ, ²—, , ³/₄, ³, φ ĩB

WCPUID / CPU Status

[WCPUID Ver.2.1]

Vendor ID Type ID
Family ID Model ID Stepping ID


Clock Frequency
Internal MHz Clock Ratio
External MHz

I-Cache Byte L2 Cache Byte
D-Cache Byte L2 Latency

Intel MMX Technology
3DNow! Technology

スタンダードコンピュータ
Windows 98 Version 4.10.1998

Analyze
Feature Flag
Cache Info
Cache Reg
AGP Info
Copy
OK

 Copyright (c) 1996-98 By H.Oda!

Windows 95/98/NT

4.0 Ā Ā ACPU, ĩfNf ĩfbfNžü" g Ā" ĀA, " ,æ, ÑMMXfefNfmf ĩfW, â ĀA3D Now ĩfTf|

Ā[fg, ĩ—L-³, đ'ā'è, ;, éfvf ĩfOf%of€, Ā, · ĀB

Intel ĀAAMD ĀACyrix ĀAIDT, ĩŠeŽíCPU, É'î%ož, μ, Ā, ϕ, Ū, · ĀB


ĀÚ, μ, , ĩ, ±, ĭ, ϕ, đ, ²—, , , ³/₄, ³, ϕ

{button ,EF(`powinst.exe', `WCPU210 /V WCPUID.TXT',1) } Ā@DISC1:\
BENCH\WCPU210\WCPUID.TXT

DISC1:\BENCH\WCPU210

{button ,EF(`powinst',`WCPU210',1)} fCf“fXfg□[f<.lŽÀ□s

3DMark 99

 fCf“fXfg[]f<,iŽÀ[]s

%œ-ÊfCf[][]fW



Žû~^ftfHf<f_

DISC1:\BENCH\3DMARK99



© 1999

Futuremark Software Corporation, Ltd.
<http://www.3dmark.com/>

“à—e

3D•`%œ«“\,đ'è,·,éjKff,•—,lfxf“f`f}[]fNf\ftfg,Å,·B
DirectX 6.x,É'í%ž,μ,Ä,“,èA,“,à,ÉfQ[]f€,Ä,İ3D•`%œ«“\,đdŽ<,μ,Ä'è,μ,Ü,·B

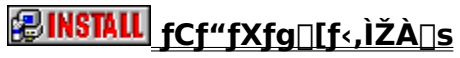


3D•`%œ«"\,đ'á'è,·,éfKff,•—,ìxf"f`f}[]fNf\ftfg,Å,·B
DirectX 6.x,É'í%ž,μ,Ä,¨,èA,¨,à,ÉfQ[]f€,Å,ì3D•`%œ«"\
,đdŽ<,μ,Ä'á'è,μ,Û,·B

DISC1:\BENCH\3DMARK99

{button ,EF(`powinst',`3DMARK99',1)} fC“fXfg[]f<,iŽÀ[]s

Final Reality Ver1.01



%oæ-ÊfCf[][]fW



Žû~^ftfHf<f_

DISC1:\BENCH\FR101



[]\$[]i

Remedy Entertainment Ltd. & VNU European Labs
<http://www.remedy-ent.com/fr/>

“à—e

3D,ì•`%œ«“\,ð‘à’è,·,éfxf“f`f}[]fNfjftfg,Å,·□B
DirectX,Å,ì•`%œ«“\,ì,Û,©□AAGPfofX,ì“]’—fÆ[]fg,à‘à’è,Å,«,Û,·□B




3D, ì·`%œ«" \, ð'è, ·, éfxj" f` f} [fNf\ftfg, Å, ·B
DirectX, Å, ì·`%œ«" \, ì, Ù, ©AAGPfofX, ì"]'—fE [fg, à'è, Å, «, Ù, ·B

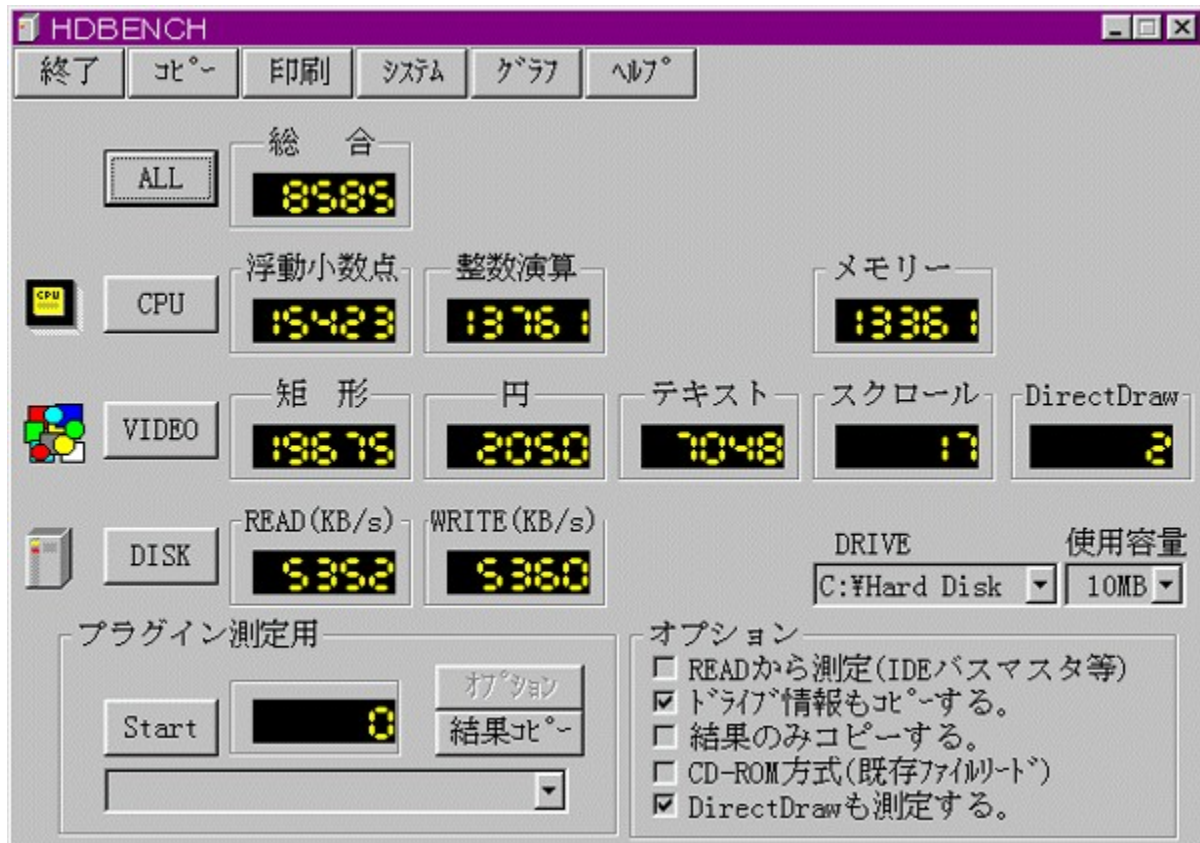
DISC1:\BENCH\FR101

{button ,EF(`powinst',`FR101',1)} fC“fXfg[]f<,iŽÀ[]s

HDBENCH(ハードベンチ) Ver 2.61

 [fCf“fXfg\[\]f<,iŽÀ\[\]s](#)

%œ-ÊfCf[]fW



The screenshot shows the HDBENCH application window with the following data:

Category	Sub-category	Value
総合 (Overall)	ALL	8585
	CPU	15423
	メモリ (Memory)	13361
VIDEO	浮動小数点 (Floating Point)	13761
	整数演算 (Integer Calc)	13761
	矩形 (Rectangle)	19679
	円 (Circle)	2050
	テキスト (Text)	7048
DISK	スクロール (Scroll)	17
	DirectDraw	2
	DRIVE	C:¥Hard Disk
使用容量 (Usage)	10MB	
READ (KB/s)	5352	
WRITE (KB/s)	5360	

プラグイン測定用 (Plugin Measurement): Start [0] [オプション] [結果] [結果] [結果]

オプション (Options):

- READから測定 (IDEバスマスタ等)
- ドライブ情報もレポートする。
- 結果のみコピーする。
- CD-ROM方式 (既存ファイル)
- DirectDrawも測定する。

Žú~^ftfHf<f_

DISC1:\BENCH\HDBE261



☺

EP82%ü/, ©, , Ž
<http://www.lares.dti.ne.jp/~ep82kazu/>

“à—e

fn[fhfffBfXfN[A•`%æ[ACPU,ì'¬,³,đ'è',,évf[fOf%of€,Â,·B^È%º,ì€-Ú,É,Â,ç
,Ä,ì'è',ð[s,É,ç,Û,·B
[Efn[fhfffBfXfN
fŠ[fh[Af%ofCfG[AfLfffbfVf...,ì1•bŠÔ,ì"']—byte"
[E•`%æ
1•bŠÔ,ì<éCE`[•%~[•fXfNf[f<,ì•`%æ%ñ"
[ECPU
1•bŠÔ“-½,è,ì•,“®[-““_%%ŽZ[•®“%%ŽZ,ìEvŽZ%ñ“



@Ú,µ,í[AHDBENCH.HLP,đ,²—,¾,¾,ç[B

HDBENCH

終了 コピー 印刷 システム グラフ ヘルプ

ALL 総合 8585

CPU 浮動小数点 15423 整数演算 13761 メモリー 13361

VIDEO 矩形 19675 円 2050 テキスト 7048 スクロール 17 DirectDraw 2

DISK READ (KB/s) 5352 WRITE (KB/s) 5360 DRIVE C:\Hard Disk 使用容量 10MB

プラグイン測定用

Start 0 オプション 結果コピー

オプション


- READから測定 (IDEバスマスタ等)
- ドライブ情報もコピーする。
- 結果のみコピーする。
- CD-ROM方式 (既存ファイルリット)
- DirectDrawも測定する。

fn[fhfffBfXfN]A•`%œ[ACPU,ì¬,³,ð'â'è,·,éfvf[fOf%of€,Å,·B^È%º,ì€-
Ú,É,Â,ç,Ä,ì'â'è,ð[s,È,ç,Û,·B
[Efn[fhfffBfXfN
fŠ[fh[Af%ofCfG[AfLfffbfVf...,ì1•bŠÔ,ì"]—byte"
[E•`%œ
1•bŠÔ,ì<éœ`[•%~[•fXfNf[[f<,ì•`%œ%ñ"
[ECPU
1•bŠÔ"-,½,è,ì•,"®[¬[""_%%ŽZ[•®["%%ŽZ,ìEvŽZ%ñ"
[Ú,μ,,í,±,¿,ç,ð,²—,,¾,³,ç
{button ,EF(`powinst.exe',`HDBE261 /V
HDBENCH.HLP',1) }@[HDBENCH.HLP

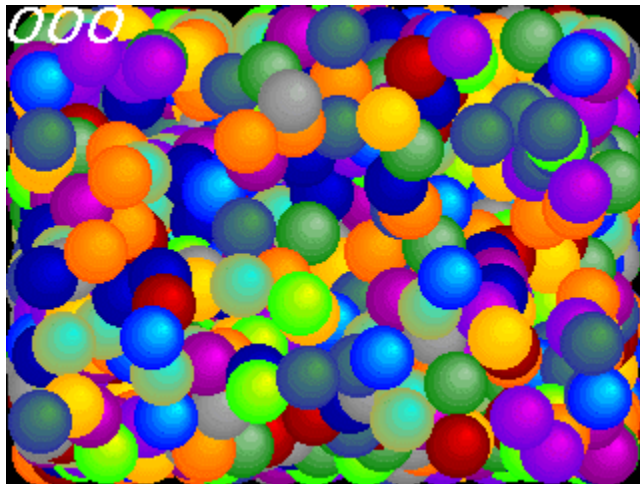
DISC1:\BENCH\HDBE261

{button ,EF(`powinst',`HDBE261',1)} fC“fXfg[]f<,iŽÀ[]s

DDBENCH(DirectDrawíÞÝÁ) Ver 1.41

 fCf“fXfg[]f<,iŽÀ[]s

%œ-ÊfCf[]fW



Žû~^ftfHf<f_

DISC1:\BENCH\DDBEN141




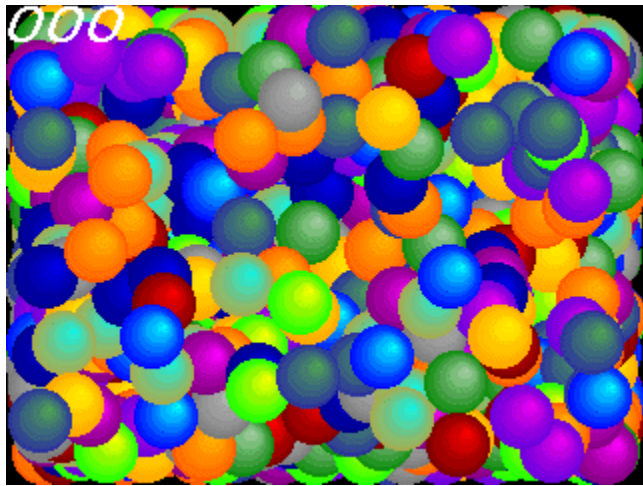
[]\$[]ì

EP82%œü/,©, Ž
<http://www.lares.dti.ne.jp/~ep82kazu/>

“à—e

DirectDraw,ì·`%œ'¬“x,ð'ª'è,·,éfvf□fOf%of€,Å,·□BŽÀ□s,·,é,Æ□A2,000-‡,ÌSPRITE,ð·\
Ž!,³,¹,¹/₂,Æ,«,ì,P•bŠÔ,ì%œ-Ê□',«Š,ì%ñ□",ð□¶□ã,É•\Ž!,μ,Ü,·□B
DirectDraw,í□ADISC2,É“ü,Á,Ä,ç,éDirectX,ðfCf“fXfg□[f<,·,é,±,Æ,É,æ,èŽg—p,Å,«,Ü,·□B

 **BROWSE** □@□Ú,μ,·,í□ADDBENCH.HLP,ð,²—,·,³/₄,³,ç□B

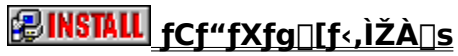


DirectDraw,ì•`%œ'¬“x,đ'â'è,·,éfvf□fOf%of€,Å,·□BŽÀ□s,·,é,Æ□A2,000-
‡,ìSPRITE,đ•\Ž!,³,¹,¹/₂,Æ,«,ì,P•bŠÔ,ì%œ-Ê□',«Š·,!'%ñ□”,đ□¶□ã,É•\Ž!,μ,Ü,·□B
DirectDraw,í□ADISC2,É“ü,Á,Ä,ç,éDirectX,đfCf“fXfg□[f<,·,é,±,Æ,É,æ,èŽg—
p,Å,«,Ü,·□B
□Ú,μ,,í,±,ç,đ,²—,„³/₄,³,ç
 {button ,EF(`powinst.exe',`DDBEN141 /V
DDBENCH.HLP',1) }□@DDBENCH.HLP

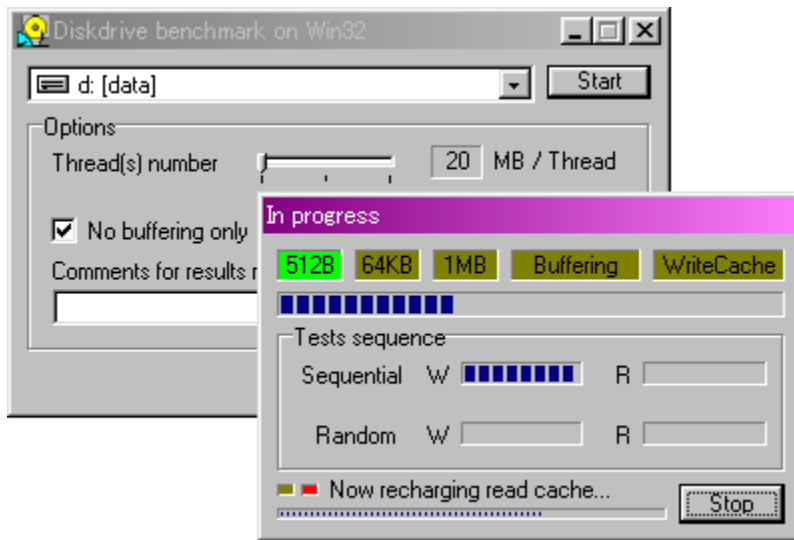
DISC1:\BENCH\DDBEN141

{button ,EF(`powinst',`DDBEN141',1)} fC“fXfg[]f<,iŽÀ[]s

Diskdrive benchmark on Win32 1.22



‰œ-ÊfCf[]fW



Žû~^ftfHf<f_

DISC1:\BENCH\DBNCH122



[]\$[]i

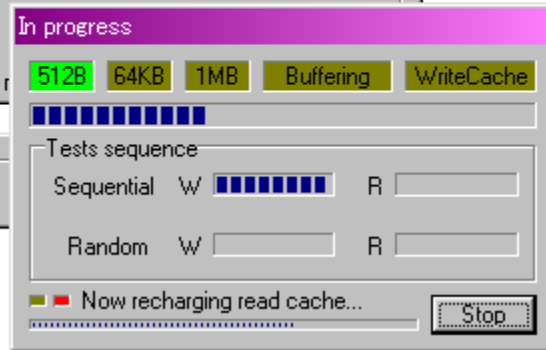
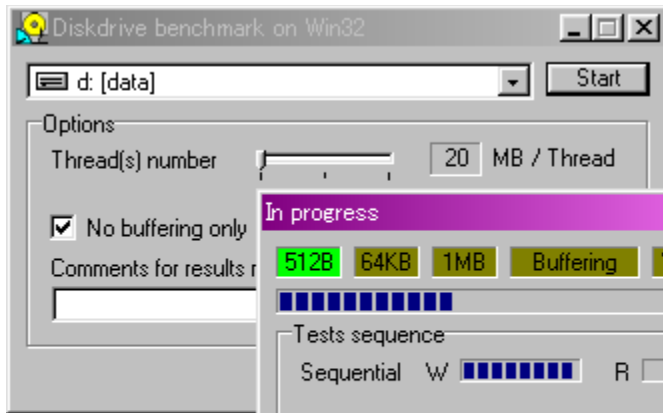
'È“c—Y“ñŽ[]
<http://www.inco.ne.jp/~tsukada/>

“à—e

Win32ŠÂ««iWindows 98/95/NT 4.0/NT 3.51j%º,É,¨,¯,éAŠf€[fófuf<f[]ffBfA,đ,Ó,-
,bfffBfXfNfhf%ºfCfu,lfpftfH[f}f“fX,đ‘a’è,·,évfj[]fOf%ºf€,Å,·[]B



@Ú,µ,ÍADISC1:\BENCH\DBNCH122\DBENCH32.HTM,đ,²—,.,³/₄,³,ç[]B



Win32ŠÂ««iWindows 98/95/NT 4.0/NT 3.51j
%º,É,¨,¯,éAfŠf€[fufuf<f[]ffBfA,đ,Ó,,PfffBfXfNfhf
%fCfu,ìfpftfH[]f}f“fX,đ‘a’è,·,évf[]fOf%of€,Å,·[]B
[]Ú,μ,í,±,¿,ç,đ,²—,³/4,³,¢
 {button ,EF(`powinst.exe',`DBNCH122 /V DBENCH32.HTM',1) }[]@DISC1:\
BENCH\DBNCH122\DBENCH32.HTM

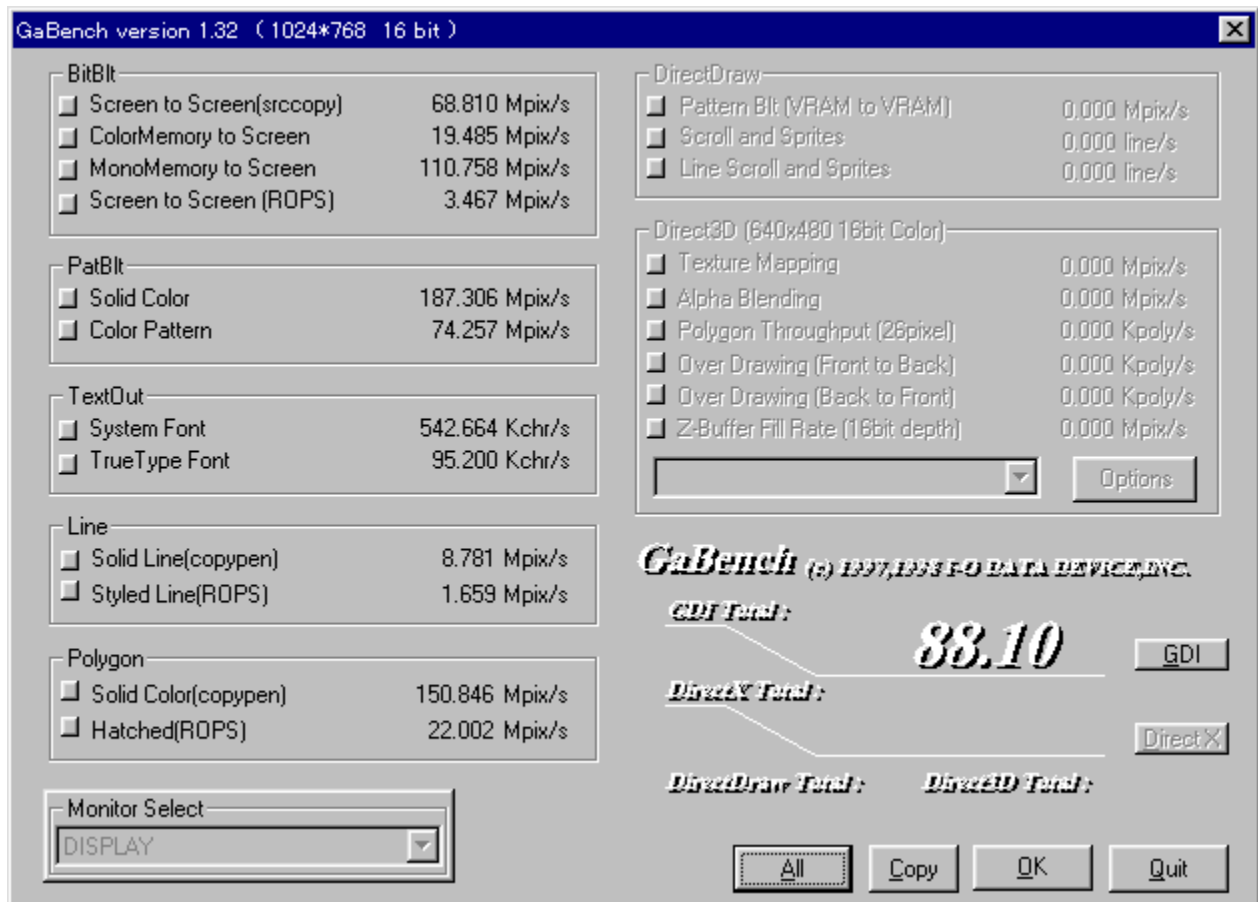
DISC1:\BENCH\DBNCH122

{button ,EF(`powinst',`DBNCH122',1)} fC“fXfg[]f<,iŽÀ[]s

Š”Ž®%oïŽĐfAfcEfiEfff^<@Ší GaBench Version.1.32

 **COPY** ftf@fCf<.lfRfs

%oæ-ÊfCf



GaBench version 1.32 (1024*768 16 bit)

Category	Item	Value
BitBlt	Screen to Screen(srccopy)	68.810 Mpix/s
	ColorMemory to Screen	19.485 Mpix/s
	MonoMemory to Screen	110.758 Mpix/s
	Screen to Screen (ROPS)	3.467 Mpix/s
PatBlt	Solid Color	187.306 Mpix/s
	Color Pattern	74.257 Mpix/s
TextOut	System Font	542.664 Kchr/s
	TrueType Font	95.200 Kchr/s
Line	Solid Line(copypen)	8.781 Mpix/s
	Styled Line(ROPS)	1.659 Mpix/s
Polygon	Solid Color(copypen)	150.846 Mpix/s
	Hatched(ROPS)	22.002 Mpix/s
DirectDraw	Pattern Bit (VRAM to VRAM)	0.000 Mpix/s
DirectDraw	Scroll and Sprites	0.000 line/s
DirectDraw	Line Scroll and Sprites	0.000 line/s
Direct3D (640x480 16bit Color)	Texture Mapping	0.000 Mpix/s
	Alpha Blending	0.000 Mpix/s
	Polygon Throughput (26pixel)	0.000 Kpoly/s
	Over Drawing (Front to Back)	0.000 Kpoly/s
	Over Drawing (Back to Front)	0.000 Kpoly/s
	Z-Buffer Fill Rate (16bit depth)	0.000 Mpix/s

GaBench (c) 1997, 1998 by DATA DEVICE, INC.

GDI Test: **88.10** [GDI]

DirectX Test: [DirectX]

DirectDraw Test: **Direct3D Test:**

Monitor Select: DISPLAY

[All] [Copy] [OK] [Quit]

Žú~^ftfHf<f_

DISC1:\BENCH\GABNC132



☺☺

Š”Ž®%oiŽĐ fAfC□Efi□□Efff□f^<@Ší
<http://www.iodata.co.jp/>

“à—e

Microsoft Windows95/NT□ă,Ă□APC,ì•`%œ”\—Í,đŒv’ª,.,é,½,β,lf\ftfgfEjFfA,Ă,·□B
frfffif`fbfv,İŠî- {“I,Ě”\—Í,đ’ª,é,±,Æ,đ□dŽ<,μ,Ă□ì,ç,ê,Ă,ç,Û,·□B

Ž©ŒÈ“WŠJŒ`Ž® ,iftf@fCf<,Æ,È,Á,Ă,ç,Û,·,ì,Á□A“K“-
,ÈftfHf<f_ ,ÉfRfs□L,μ,Ă,©,çŽĂ□s,μ,Ă,,¾,¾,ç□B



□@□Ú,μ,Í□ADISC1:\BENCH\GABNC132\README.TXT,đ,²—,¾,¾,ç□B



BitBlt

<input type="checkbox"/> Screen to Screen(srccopy)	68.810 Mpix/s
<input type="checkbox"/> ColorMemory to Screen	19.485 Mpix/s
<input type="checkbox"/> MonoMemory to Screen	110.758 Mpix/s
<input type="checkbox"/> Screen to Screen (ROPS)	3.467 Mpix/s

PatBlt

<input type="checkbox"/> Solid Color	187.306 Mpix/s
<input type="checkbox"/> Color Pattern	74.257 Mpix/s

TextOut

<input type="checkbox"/> System Font	542.664 Kchr/s
<input type="checkbox"/> TrueType Font	95.200 Kchr/s

Line

<input type="checkbox"/> Solid Line(copypen)	8.781 Mpix/s
<input type="checkbox"/> Styled Line(ROPS)	1.659 Mpix/s

Polygon

<input type="checkbox"/> Solid Color(copypen)	150.846 Mpix/s
<input type="checkbox"/> Hatched(ROPS)	22.002 Mpix/s

Monitor Select

DISPLAY

DirectDraw

<input type="checkbox"/> Pattern Bit (VRAM to VRAM)	0.000 Mpix/s
<input type="checkbox"/> Scroll and Sprites	0.000 line/s
<input type="checkbox"/> Line Scroll and Sprites	0.000 line/s

Direct3D (640x480 16bit Color)

<input type="checkbox"/> Texture Mapping	0.000 Mpix/s
<input type="checkbox"/> Alpha Blending	0.000 Mpix/s
<input type="checkbox"/> Polygon Throughput (26pixel)	0.000 Kpoly/s
<input type="checkbox"/> Over Drawing (Front to Back)	0.000 Kpoly/s
<input type="checkbox"/> Over Drawing (Back to Front)	0.000 Kpoly/s
<input type="checkbox"/> Z-Buffer Fill Rate (16bit depth)	0.000 Mpix/s

Options

GaBench (c) 1997,1998 F.O. DATA DEVICE, INC.

GDI Test: **88.10**

DirectX Test:

DirectDraw Test: Direct3D Test:


Microsoft Windows95/NT Ā, Å APC, ì • ` % œ " \ — Í, ð Ą v ' ¢, ·, é, ½, ß, ð \
ftfgfEjFfA, Å, · B
frfffj^ fbfv, Ì Š î - { " l, È " \ — Í, ð ' ¢, é, ±, Æ, ð d Ž <, μ, Ä ð ì, ç, ê, Ä, ç, Ü, · B

Ž © Ą È " W Š J Ą ` Ž ®, ì ftj @ f C f <, Æ, È, Á, Ä, ç, Ü, ·, ì, Å A " K " -
, È ftj H f < f _ , É f R f s [, μ, Ä, ©, ç Ž Ä s, μ, Ä, , ¾, ¾, ç B
U, μ, í, ±, ç, ð, ² — —, ¾, ¾, ç
{button ,EF(` .. \ MENU DATA \ IMPVIEW.EXE', ` GABNC132 \
README.TXT', 1) } @ DISC1 : \ BENCH \ GABNC132 \ README.TXT

DISC1:\BENCH\GABNC132

{button ,EF(`powinst',`GABNC132',1)} ftf@fCf<,lfRfs[

Š”Ž®%oiŽĐfAfC□Efl□□Eff□lf^<@Ší fAfvfŠfxf“f`

 fCf“fXfg□lf<,iŽÀ□s

%oæ-ÊfCf□□lfW



Žú~^ftfHf<f_

DISC1:\BENCH\WKAPB



□\$□i

Š”Ž®%oiŽĐ fAfC□Efl□□Eff□lf^<@Ší
<http://www.iodata.co.jp/>



“à—e

Windows 95 ä, Å Ž À Ù, É f A f v f Š f P [f V f f] “, ð Ž À [s, μ, ½, Æ, «,] f v f X f e f € [< “ \, ð •] %
¿, ·, é f v f [f O f % f € , Å, · [B f A f v f Š f P [f V f f] “, ð Ž g — p, μ, Å f x f “ f ` f } [f N, ð Ž æ, é, ½, ß [A f ` f ...
[f j f f “ f O, ð [s, È, æ [é [ð, É Ž À Ù,] Ž g —
p Ž Ž, É, Ç, è, ¾, ¯ — “ x, º C E ü [ä, ·, é, ì, ©, º [A “ ä Š r “ | • º, ©, è, â, ·, , È, Á, Ä, ç, Ü, · [B
‘ º ’ è [€ — Ú [F “ d ò, Å f x f “ f ` f } [f N [A f [f, ‘, Å f x f “ f ` f } [f N [A f y f C f “ f g, Å f x f “ f ` f } [f N

アプリベンチ

クリップボードへコピー	テキストファイルで保存	測定項目の編集
測定項目の保存	測定項目の呼び出し	測定精度の選択
警告の設定	表示位置の設定	表示モードの選択
ヘルプビックの検索	バージョン情報	閉じる

全項目の測定	13251	
電卓でベンチマーク	6060	
メモ帳でベンチマーク	6372	
ペイントでベンチマーク	16063	

Windows 95 ě, ÅŽÀÛ, ÉfAfvfŠfP[fVf†f“, ðŽÀs, μ, ½, Æ, «, ìVfXfef€«”\, ð•]‰
¿, ·, éfvfOfOf‰f€, Å, ·BfAfvfŠfP[fVf†f“, ðŽg—
p, μ, Åfxf“f`f} [fN, ðŽæ, é, ½, ßAf`f... [fjf“fO, ðs, È, xê†, ÉŽÀÛ, ìŽg—
pŽŽ, É, Ç, ê, ¾, ¯´“x, Æüã, ·, é, ì, ©, ÆA”äŠr“l•ª, ©, è, â, ·, , É, Á, Ä, †, Ü, ·B
‘ª’è€-ÚF“d’ì, Åfxf“f`f} [fN Af, , Åfxf“f`f} [fN AfyfC“fg, Åfxf“f`f} [fN

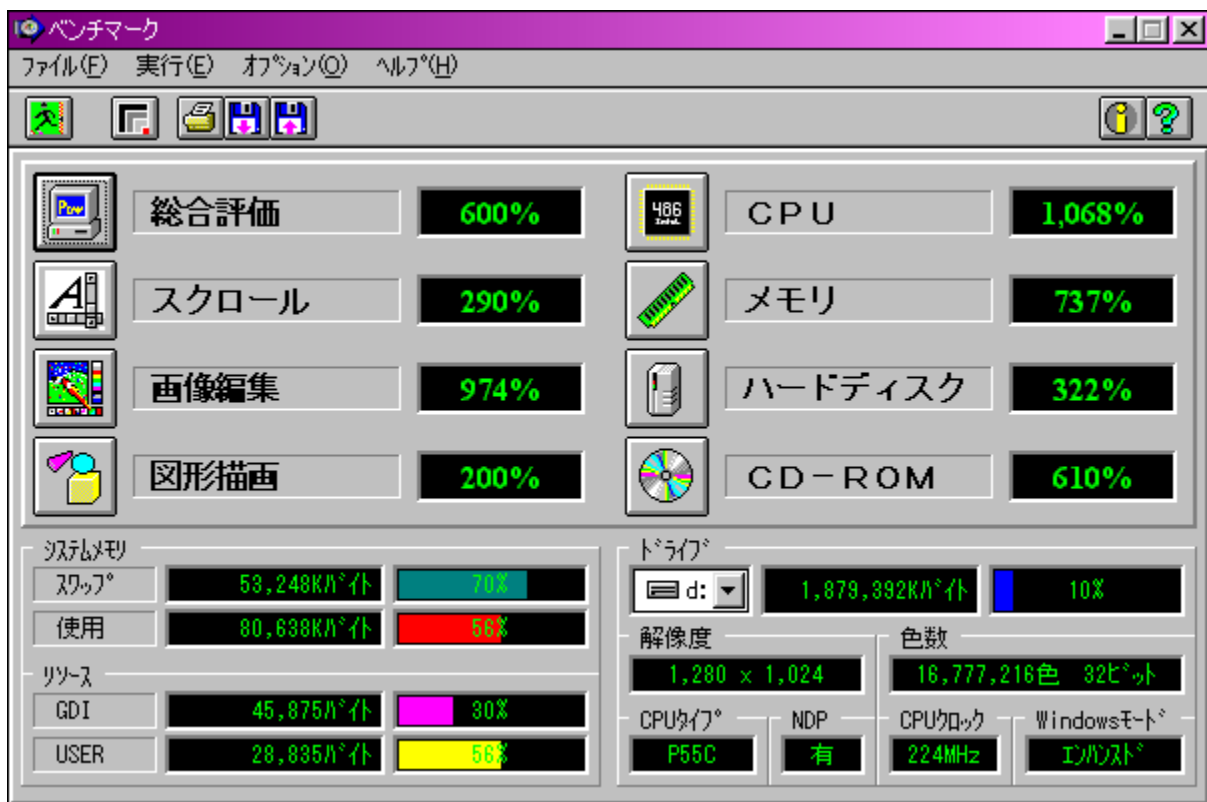
DISC1:\BENCH\WKAPB

{button ,EF(`powinst', `WKAPB',1)} fCf"fxfg[]f<,iŽÀ[]s

ベンチマーク Ver1.30

COPY 実行中

ベンチマーク



ディスク

DISC1:\BENCH\MELCO

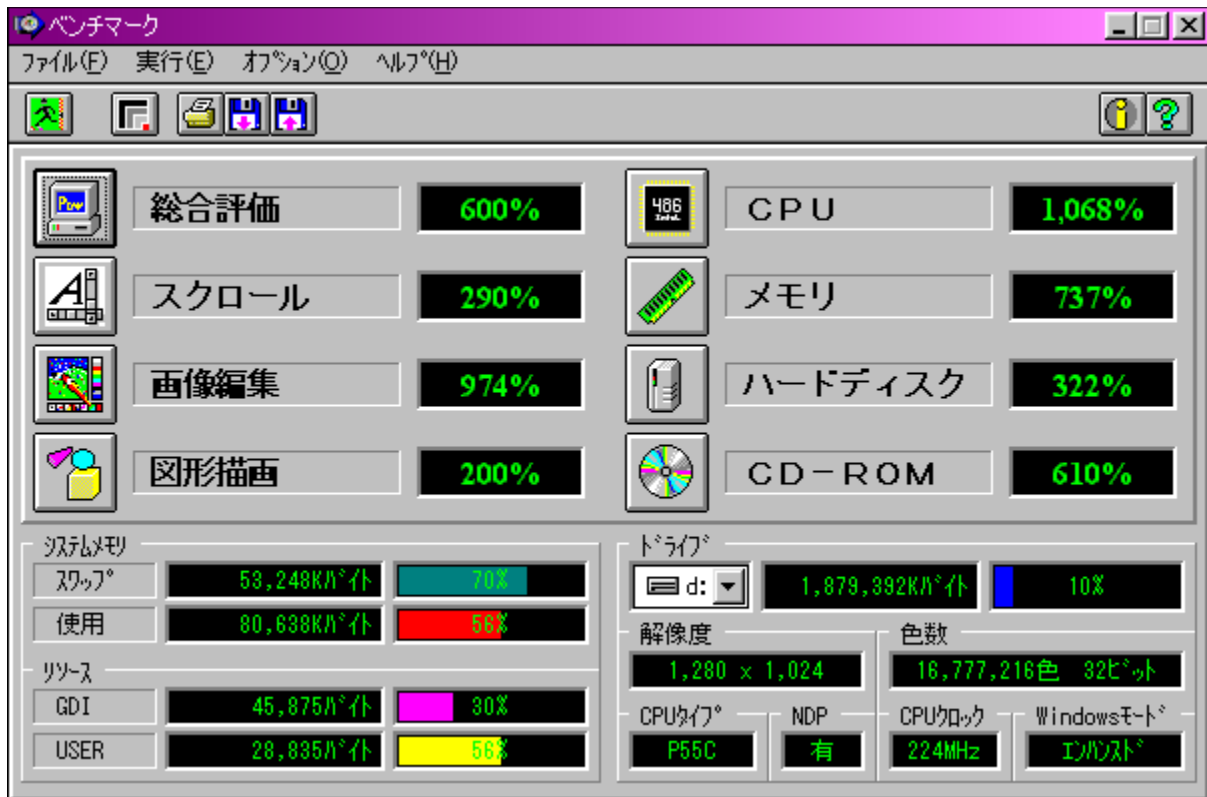
§

ŠŽ®%iŽĐf<fR
<http://www.melcoinc.co.jp/>

à—e

PC,ì[]+fpftfH[]f}fX,đ'è,·,évf[]fOf%of€,Å,·BWord Pad,đŽg—
p,μ,½fXfNf[]f<[]AfyfCf“fg,Å,ì%œ'œ·`ŽÊ,â[]ACPU[]Af[]f,š[]Af[]f[]fhfffBfXfN[]ACD-
ROM,ì[]«”\,đ'è,·,é,±,Æ,ª,Å,«,Û,·B

“K”-,ÈftfHf<f_ÉfRfs[][,μ,½CEã[]ASetup.exe,đŽÀ[]s,μ,Ä,,¾,³,¢[]B



PC,ì'□□#fpftfH□[f}f“fX,đ'á'è,·,éfvf□fOf%of€,Å,·□BWord Pad,đŽg—
p,μ,½fXfNf□□[f<□AfyfCf“fg,Å,ì
%œ'œ•`ŽÉ,â□ACPU□Af□f,fŠ□Afn□[fhfffBfXfN□ACD-ROM,ì□«”\,đ'á'è,·,é,±
,Æ,ª,Å,«,Ü,·□B

“K”-,ÉftfHf<f_,ÉfRfs□[,μ,½CEã□ASetup.exe,đŽÀ□s,μ,Ä,,¾,³,¢□B

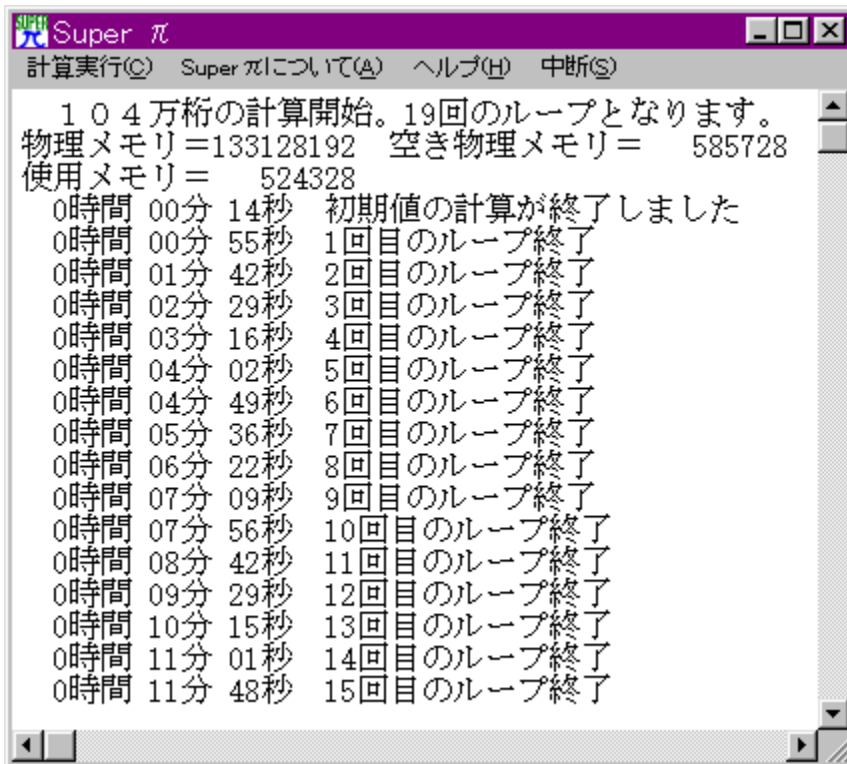
DISC1:\BENCH\MELCO

{button ,EF(`powinst',`MELCO',1)} ftf@fCf<,lfRfs[

Super π Ver 1.1

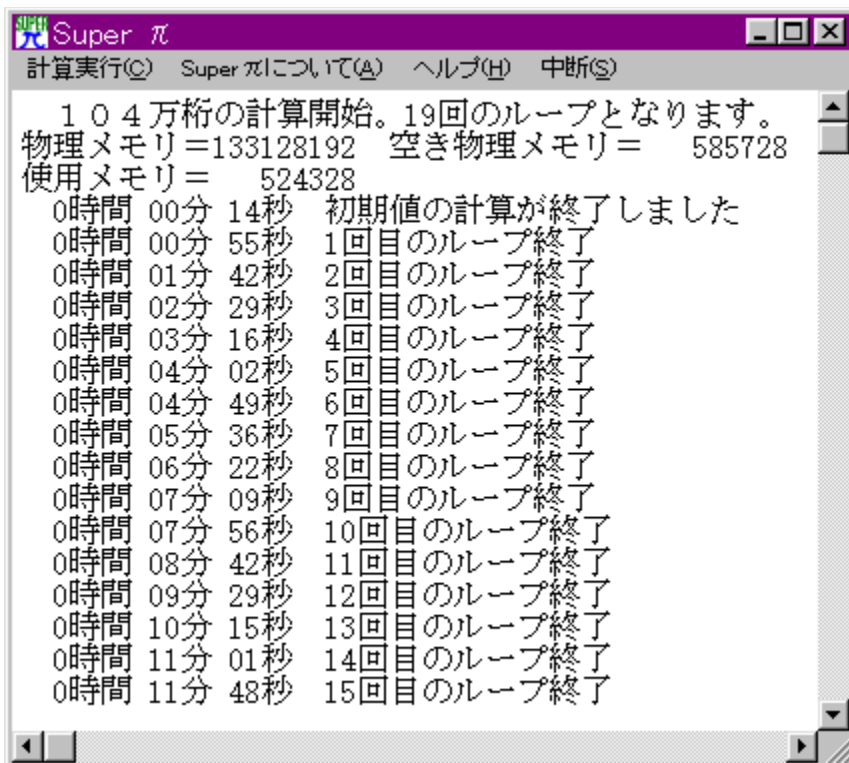
 ftf@fCf<.lfRfs

%oæ-ÊfCf



Žú~^ftfHf<f_

DISC1:\BENCH\SUPERPAI



%o~Žü—![]ifl[]j,đŒvŽZ,^{3,1},ÄCPU,âf[]f,fš[]AHDD,È,Ç,ì[]«”\,đŒv’^a,·,éftfg,Å,·[]B
[]¬[]””^È%^o1-œ6[]çŒ...,©,ç3,355-œŒ...,Û,ÅŒvŽZ,^{3,1},é,±,Æ,^a,Å,«,Û,·[]B

fvf

%ofOfCf“,đŽg,Á,Äftf@fCf<fRfs[][,·,é[]Û[]AfRfs[][]æ,ÉŽw’è,μ,½ftfHf<f_,ì
%^o,É[]uSuper_pi[]v,Æ,ç,¼ftfHf<f_,^a[]ì[]¬,³,ê,ÄfRfs[][,³,ê,Û,·[]B

DISC1:\BENCH\SUPERPAI

{button ,EF(`powinst', `SUPERPAI',1)} ftf@fCf<,lfRfs

GBENCH32 3.0

fCf“fXfg□[f<,iŽÀ□s

%œ-ÊfCf□□[fW



Žů~^ftfHf<f_

DISC1:\BENCH\GBENCH30

§

,Ü,é, ,ç Ž

“à—e

fOf%oftfBfbfN,ì«”\,đ’è’,:éfvfOf%œ,Å,·B32bit,lfXfvf%œfCfGf“fWf”,đ—~—
p,μ,ÄA10•bŠÓ,É%œ-Ê,ì’,«Š’,!,đ%½%ñs,È,!,é,©•Ž!,μ,Ü,·B

@Ú,μ,,ÍADISC1:\BENCH\GBENCH30\README.TXT,đ,²—,.,³/₄,³,çB



fOf%oftfBfbfN,ì«" \,đ'á'è,·,éfvf[]fOf%of€,Å,·B32bit,lfXfvf%ofCfgrGf"fwf",đ— ~ —
p,μ,ÄA10•bŠÔ,É%œ-Ê,ì',«Š·,|,đ%½%ñs,È,|,é,©•\Ž!,μ,Û,·B
[]U,μ,,í,±,¿,ç,đ,²—, ,³/₄,³,φ
{button ,EF(`powinst.exe', `GBENCH30 /V README.TXT',1) }[]@DISC1:\
BENCH\GBENCH30\README.TXT

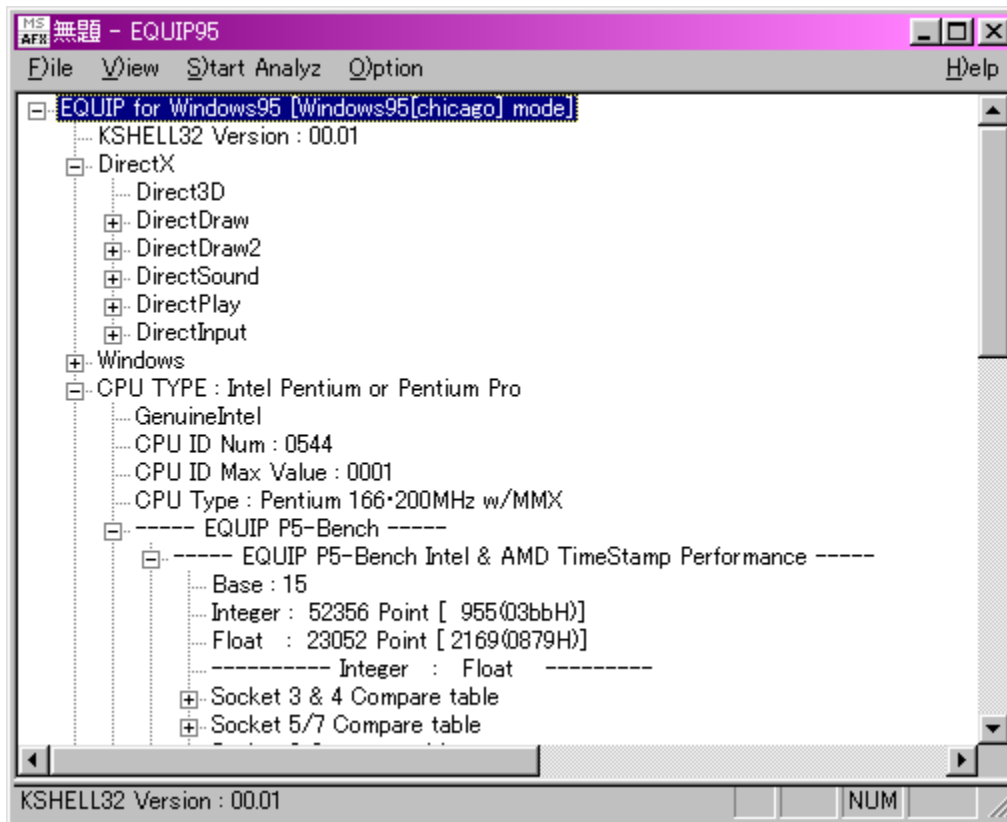
DISC1:\BENCH\GBENCH30

{button ,EF(`powinst',`GBENCH30',1)} fC“fXfg□[f<,iŽÀ□s

,d,p,t,h,o,X,T @for @Win32 @V3.10 ³Ž®ŒöŠJ”Å

fCf“fXfg [f<,iŽÀ s

%oæ-ÊfCf [fW



žû~^ftfHf<f_

DISC1:\BENCH\EQ953100

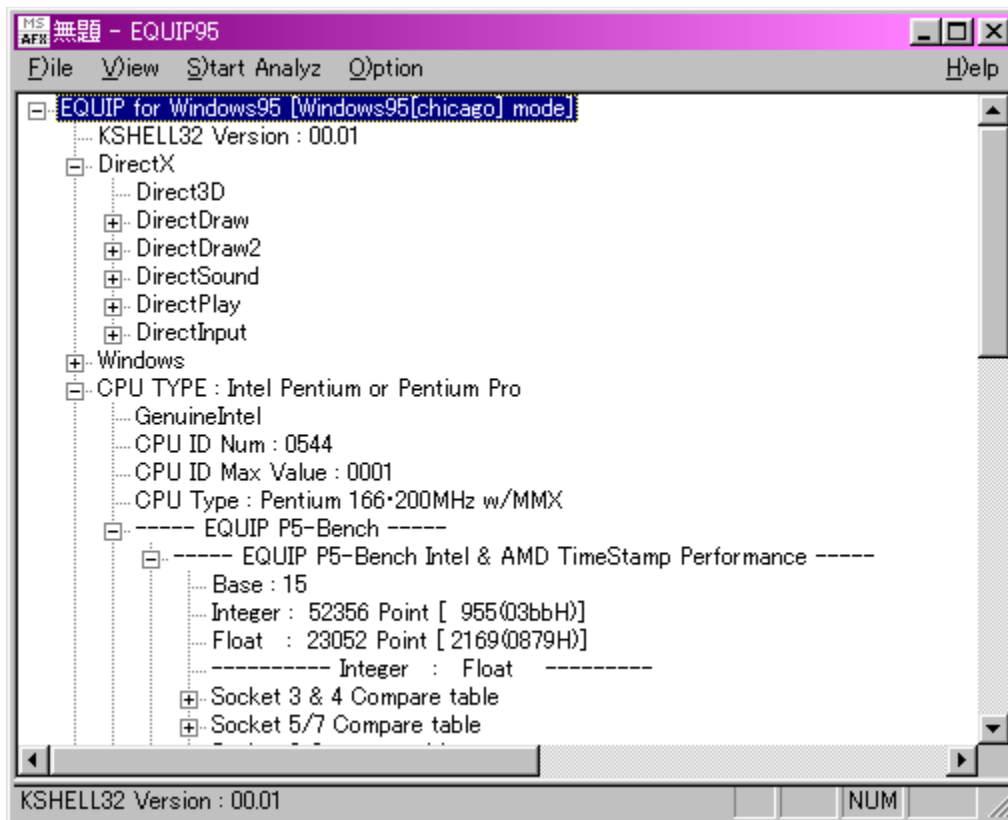
□\$□i

Ši'½~T

<http://ring.aist.go.jp/openlab/kitaro/>

“à—e

CPU□AHDD□Af□f,fŠ□AfVfXfef€,È,Ç□APC,ì, ,ç,ä,é□î•ñ,ì•Ž!□Afxf“f`f}□[fN,ð□s,È,xf
ftfg,Å,·□B



CPU AHDD Af f, fŠ AfvfXfef€, È, Ç APC, ì, , ç, ä, é î•ñ, ì•\
Ž! Afxf“f`f} [fN, ð s, È, æf\ftfg, Å, · B

DISC1:\BENCH\EQ953100

{button ,EF(`powinst',`EQ953100',1)} fC“fXfg[]f<,iŽÀ[]s

PFM486 Ver.1.77H •]‰œž”Å

fCf“fXfg□[f<,iŽÅ□s

‰œ-ÊfCf□□[fW

```
Performance of 486-PC Ver1.77h(C)1992-1995 DysanKeihin
H-----H
| P54C Frequency = 19.35 MHz Machine:AT v1.77h|
| CPUID Results = GenuineIntel Fam 5 Mdl 2 Stp12 |
| Ecache Read Time =4227 ns/dword (...wait, 1mb/s)|
| Ecache Write Time =4054 ns/dword (...wait, 1mb/s)|
| Memory Read Time =7835 ns/dword (...wait, 1mb/s)|
| Memory Write Time = 752 ns/dword (...wait, 5mb/s)|
H-----H
```

Žû~^ftfHf<f_

DISC1:\BENCH\PFM_177H

□\$□i

‘æŽO<ž•I Ž□

“à—e

386 ^È□~,) x86 CPU ,đŽg,Á,½ PC ,išO•”f□f,fŠ□«”\,đ‘a’è,,évf□fOf‰œ€

,Å,·□Bf□f,fŠfo□[fXfgfŠ□[fh□Af□f,fŠf%ofCfg□AŠO•"fLffffbfVf...fŠ□[fh□AŠO•"fLffffbfVf...f
%ofCfg,í□«"\\,đ'ª'è,·,é,±,Æ,ª,Å,«,Ü,·□B

□@□Ú,μ,·,í□ADISC1:\BENCH\PFM_177H\README.1ST,đ,²—,·,³/₄,³,č□B

```
Performance of 486-PC Ver1.77h(C)1992-1995 DysanKeihin
H-----H
| P54C   Frequency   = 19.35 MHz   Machine:AT  v1.77h|
|   CPUID Results   = GenuineIntel Fam 5 Mdl 2 Stp12 |
| Ecache Read Time  =4227 ns/dword (...wait, 1mb/s)|
| Ecache Write Time =4054 ns/dword (...wait, 1mb/s)|
| Memory Read Time  =7835 ns/dword (...wait, 1mb/s)|
| Memory Write Time = 752 ns/dword (...wait, 5mb/s)|
H-----H
```

386 ^È~ ,ì x86 CPU ,đŽg,Á,½ PC ,İSO•"f,fŠ«"\,đ'ª'è,·,évf fOf%of€
,Å,·Bf f,fŠfo [fXfgfŠ [fh Af f,fŠf%ofCfg AŠO•"fLfffbfVf...
fŠ [fh AŠO•"fLfffbfVf...f%ofCfg,İ«"\,đ'ª'è,·,é,±,Æ,ª,Å,«,Ü,·B
U,μ,Í,±,¿,ç,đ,²—, ,³/₄,³,ϕ
{button ,EF(`powinst.exe',`PFM_177H /V README.1ST',1) } @DISC1:\
BENCH\PFM_177H\README.1ST

DISC1:\BENCH\PFM_177H

{button ,EF(`powinst',`PFM_177H',1)} fC“fXfg[]f<,iŽÀ[]s

Performance meter for Intel 686 ver 2.1A

ftf@fCf<,lfRfs[]

%oæ-ÊfCf[]fW

```
C:\TEMP>pfm686
-- pfm686 ver2.0 DysanKeihin & (koji) --
-----
|CPU: P54C [GenuineIntel Fam5 Md12 Stp12]|
|-----|
| 133.27[MHz] | [ns/dword] |[CPUclocks]|
|-----|
| E-cache read | 12.106 | 1.613 |
| E-cache write | 44.904 | 5.984 |
| main read | 30.674 | 4.088 |
| main write | 45.183 | 6.022 |
|-----|
```

Žú~^ftfHf<f_

DISC1:\BENCH\PFM68621

[]\$[]i

[]i,±,[]jŽ[]A'æŽO<ž•lŽ[]

“à—e

Pentium^È~ ,ìCPU,đŽg,Á,½ PC ,ìŠO•”f f,fŠfAfNfZfX’→“x,đ’a’è,·,éfvf fOf%of€ ,Á,·B

ADISC1:\BENCH\PFM68621\PFM686.DOC,đ,²—,·,¾,³,čB

```
C:\TEMP>pfm686
```

```
-- pfm686 ver2.0 DysanKeihin & (koji) --
```

```
|CPU: P54C [GenuineIntel Fam5 Md12 Stp12]|
```

```
| 133.27[MHz] | [ns/dword] |[CPUclocks]|
```

```
| E-cache read | 12.106 | 1.613 |
```

```
| E-cache write | 44.904 | 5.984 |
```

```
| main read | 30.674 | 4.088 |
```

```
| main write | 45.183 | 6.022 |
```

Pentium^È~ ,ìCPU,đŽg,Á,½ PC ,ìŠO•"f f,fŠfAfNfZfX' -"x,đ'è,·,évf fOf%of€
,Å,·B
Ú,μ,,í,±,¿,ç,đ,²—,3/4,³,¢
{button ,EF(`powinst.exe',`PFM68621 /V PFM686.DOC',1) }@DISC1:\
BENCH\PFM68621\PFM686.DOC

DISC1:\BENCH\PFM68621

{button ,EF(`powinst',`PFM68621',1)} ftf@fCf<.lfRfs[]

PFM686 —p C%ü•İ CWSDPMI @iDPMI server j,»,ì,R

ftf@fCf<,lfRfs

Žû~^ftfHf<f_

DISC1:\BENCH\CWSDPMI3

§i

Æ´i Charles W Sandmann @%ü•İ F i,±,¶jŽ

“à—e

PFM686 ver2.0^È~„đ“®i,³,¹,é,½,ß,É•K—v,ÈDPMI fT[fo[.Å. B

@Ú,μ,Í ADISC1:\BENCH\CWSDPMI3\README.TXT,đ,²—,¾,³,ç B

PFM686 ver2.0^È~ ,đ“ ® ì, ³, ¹, é, ¹/₂, ß, É•K—v, ÈDPMI fT [fo [[, Å, · B
Ú, μ, , Í, ±, ç, ð, ²— —, , ³/₄, ³, ç
{button ,EF(`powinst.exe', `CWSDPMI3 /V README.TXT',1) } @DISC1:\
BENCH\CWSDPMI3\README.TXT

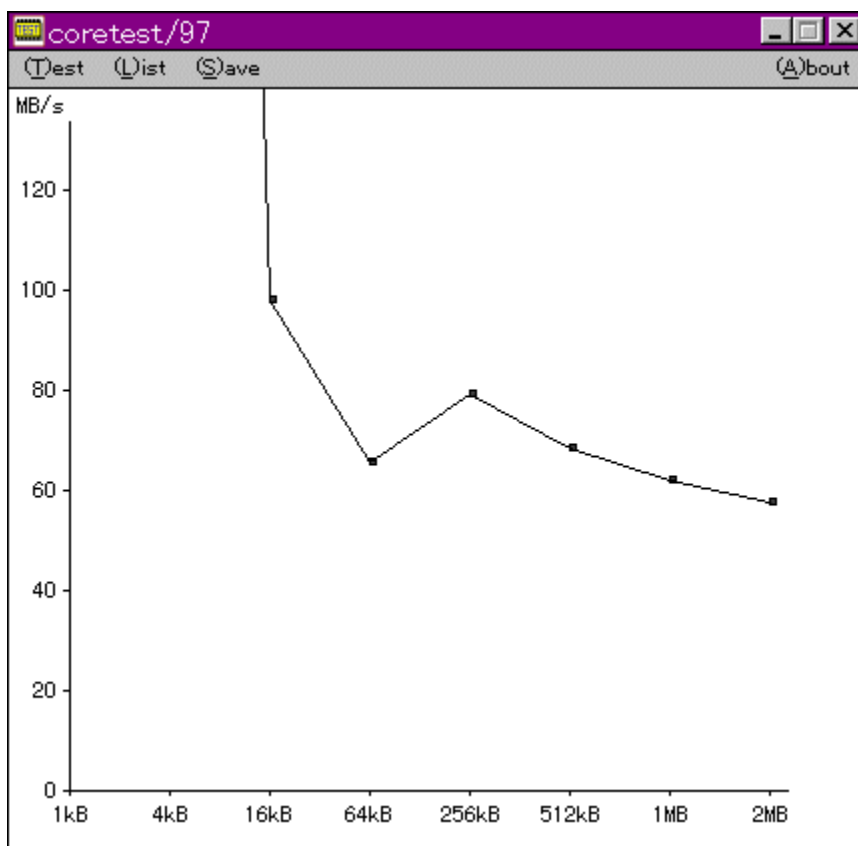
DISC1:\BENCH\CWSDPMI3

{button ,EF(`powinst',`CWSDPMI3',1)} ftf@fCf<,lfRfs[

CoreTest/97 1.01

CoreTest/97

CoreTest/97



CoreTest/97

DISC1:\BENCH\CTEST97B

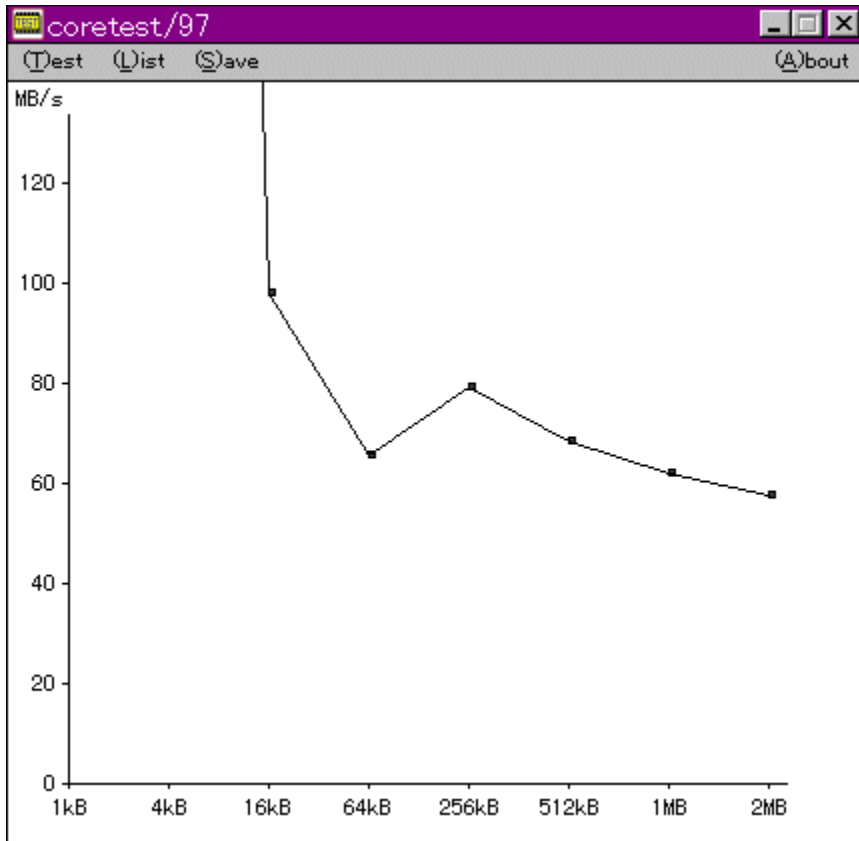
§

'O" c<X<> Ž

“à—e

f}fVf“,lf,fŠfAfNfZfXfXfs[fh,đ‘à’è,.,éfvf[]fOf%of€,Å,·BŒv‘à•”,ÉVxD[]i
%o¼‘zfffofCfXfhf%ofCfo[]j,đŽg—p,μ[]APentium,İrdtsc-½—
ß,đŽg,Á,Ä³Šm,ÈŽžŠŎ‘à’è,đ[]s,È,Á,Ä,ç,Ü,·[]B

[@[]Ú,μ,Í[]ADISC1:\BENCH\CTEST97B\README.TXT,đ,²—,.,¾,³,ç[]B



f}}fVf“ ,lf[]f,fŠfAfNfZfXfXfs[]fh,đ‘a’è,.,évf[]fOf%of€,Å,·[]BCEv‘a•” ,ÉVxD[]i
%o¼‘zfffofCfXfhf%ofCfo[]j,đŽg—p,μ[]APentium,łrdtsc-½—
ß,đŽg,Ä,Ä³Šm,ÈŽžŠÔ‘a’è,đ[]s,È,Ä,Ä,ç,Ü,·[]B
[]Ú,μ,Í,±,¿,ç,đ,²—,³/4,³,ç
{button ,EF(`powinst.exe', `CTEST97B /V README.TXT',1) }[]@DISC1:\
BENCH\CTEST97B\README.TXT

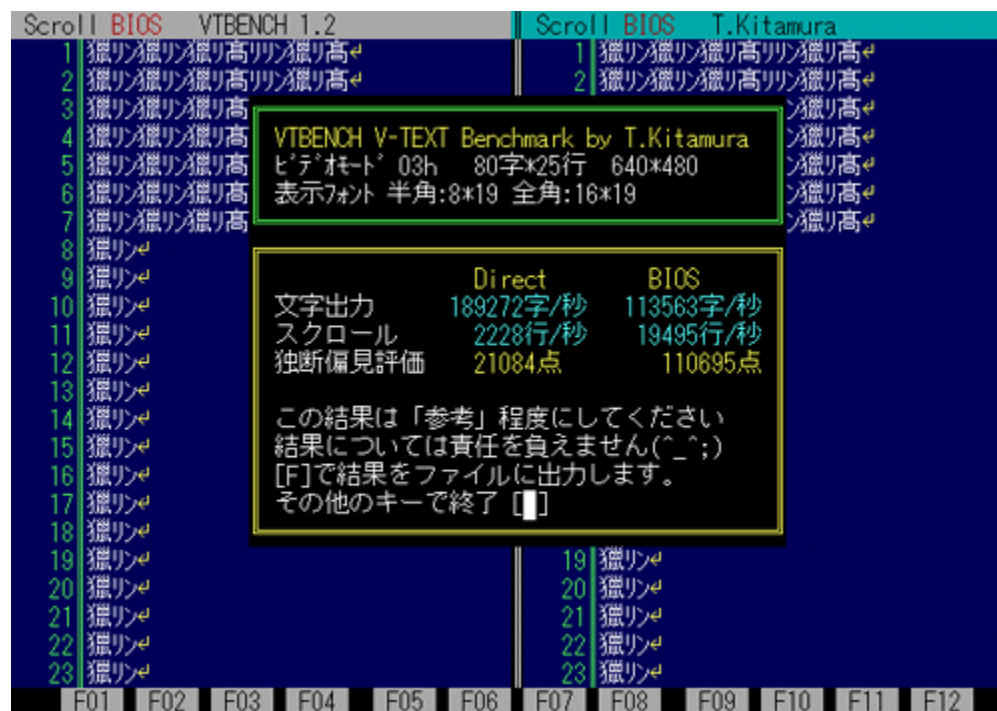
DISC1:\BENCH\CTEST97B

{button ,EF(`powinst', `CTEST97B',1)} fC“fXfg[]f<,iŽÀ[]s

VTBENCH DOS/V Text Video Benchmark Ver. 1.2

fCf“fXfg□[f<,iŽÀ□s

%oæ-ÊfCf□□[fW



Žû~^ftfHf<f_

DISC1:\BENCH\VBENCH12

□\$□ì

-k'°•q•F Ž□
<http://www.cadin.or.jp/users/baxsoft/>

“à—e

DOS/V,ìfèfLfXfg%œ-ÊŠÖŒW,ìfXfs□[fh,ðŒv'ª,·,éfvf□fOf%œ€„Å,·□BŠeŽí,ìfhf
%œfCfo,ðŽg—p,μ,½,Æ,«„É,Ç,Ì,ç,ç,ì%œ-Ê,Û,í,è,ìfXfs□[fh,ª□o,Ä,ç
,é,©,ð'Š'í“l,ÉŒv'ª,μ,Û,·□B•¶ŽŠ•\Ž!□AfXfNf□□[f<,Æ,à,ÉfrfflBIOS,Æ
%œ¼'zVRAM'¼□Ú□',«□ž,Ý,ì—¼•û,ÅŒv'ª,Å,«„Û,·□B

□@□Ú,μ,·,í□ADISC1:\BENCH\VBENCH12\VTBENCH.DOC,ð,²—,·,¾,¾,ç□B

Scroll BIOS VTBENCH 1.2					Scroll BIOS T.Kitamura				
1	獵リ	獵リ	獵リ	高リ					
2	獵リ	獵リ	獵リ	高リ					
3	獵リ	獵リ	獵リ	高リ					
4	獵リ	獵リ	獵リ	高リ					
5	獵リ	獵リ	獵リ	高リ					
6	獵リ	獵リ	獵リ	高リ					
7	獵リ	獵リ	獵リ	高リ					
8	獵リ								
9	獵リ								
10	獵リ								
11	獵リ								
12	獵リ								
13	獵リ								
14	獵リ								
15	獵リ								
16	獵リ								
17	獵リ								
18	獵リ								
19	獵リ								
20	獵リ								
21	獵リ								
22	獵リ								
23	獵リ								

VTBENCH V-TEXT Benchmark by T.Kitamura				
ビットモード' 03h 80字*25行 640*480				
表示フォント 半角:8*19 全角:16*19				

	Direct	BIOS
文字出力	189272字/秒	113563字/秒
スクロール	2228行/秒	19495行/秒
独断偏見評価	21084点	110695点

この結果は「参考」程度にしてください
結果については責任を負えません(^_^;)
[F]で結果をファイルに出力します。
その他のキーで終了 [■]

19	獵リ
20	獵リ
21	獵リ
22	獵リ
23	獵リ

F01	F02	F03	F04	F05	F06	F07	F08	F09	F10	F11	F12
-----	-----	-----	-----	-----	-----	-----	-----	-----	-----	-----	-----

DISC1:\BENCH\BENCH12

{button ,EF(`powinst', `VBENCH12',1)} fCf“fXfg□[f<,iŽÀ□s

WHATIDE

fCf“fXfg□[f<,iŽÀ□s

Žû~^ftfHf<f_

DISC1:\BENCH\WHATIDE

□\$□ì

Tom Warren Ž□

“à—e

DOS□ă,ÅIDE,lfm□[fhfffBfXfN,ì□i•ň,đ•\Ž!,·,éfvf□fOf%of€
,Å,□BfvfŠf“f_□[□□□Afwfbfh□”□A1fgf%ofbfN, ,½,è,lfZfNf^□□□AfZfNf^fofbftf@fTfCfY□A
1%oň,ìŠ,,è□ž,Y,É,“,“,éZfNf^□”(fuf□fbfNf,□[fh),ÆECCfofCfg□”,đ•\Ž!,μ,Ú,·□B

□@□Ú,μ,,í□ADISC1:\BENCH\WHATIDE\WHATIDE.DOC,đ,²—,.,³/₄,³,č□B

DOS ě, ÅIDE, ifn [fhfffBfXfN, i ě • ñ, ð • Ž |, ·, évf [fOf%of€
, Å, · BfVfŠf“f_ [[“ Afwfbfh [“ A1fgf%ofbfN, , ½, è, lfZfNf^ [“ AfZfNf^fofbftf@fTf
CfY A1%oñ, ĪŠ,,, èž, Ý, É, ¨, ¯, éfZfNf^ [“ (fuf [fbfNf, [fh), ÆECCfofCfG [“, ð • \
Ž |, μ, Ü, · B
[U, μ, , í, ±, ç, ð, ² — —, , ¾, ³, ¢
{button ,EF(`.. \MENU\DATA\IMPVIEW.EXE', `WHATIDE\
WHATIDE.DOC', 1) } [@DISC1: \BENCH\WHATIDE\WHATIDE.DOC

DISC1:\BENCH\WHATIDE

{button ,EF(`powinst', `WHATIDE',1)} fC“fXfg[]f<,iŽÀ[]s

testbat.exe - test battery performance version 0.21

Copyright (c) 1994, 1995 Pierre. (Kazuhiro Inoue), All rights reserved.

Now ready to execute battery test.
Please disconnect external power supply.
BatteryPerformance test is started!

```
testbat.exe - test battery performance version 0.21
Copyright (c) 1994, 1995 Pierre. (Kazuhiro Inoue), All rights reserved.

Now ready to execute battery test.
Please disconnect external power supply.
BatteryPerformance test is started!
0      03:41:38      99
1      03:42:38      97
2      03:43:38      95
3      03:44:38      93
4      03:45:38      90
5      03:46:38      88
6      03:47:38      86
7      03:48:38      84
8      03:49:38      82
03:50:25
```

DISC1:\BENCH\TESTBAT

DISC1:\BENCH\TESTBAT

^ä"Vã ~aOŽ

“à—e

fm[fjgfpf\frf",\fofbfefšž±žžšô,ð'â'è,:éxf"f`f}[[fNfvf]fOf%of€,Å,·B

@Ú.μ.íADISC1:\BENCH\TESTBAT\TESTBAT.DOC,đ,²—,,³/₄,³,çB

```
testbat.exe - test battery performance version 0.21  
Copyright (c) 1994, 1995 Pierre. (Kazuhiro Inoue), All rights reserved.
```

```
Now ready to execute battery test.  
Please disconnect external power supply.  
BatteryPerformance test is started!
```

0	03:41:38	99
1	03:42:38	97
2	03:43:38	95
3	03:44:38	93
4	03:45:38	90
5	03:46:38	88
6	03:47:38	86
7	03:48:38	84
8	03:49:38	82

03:50:25

fm [fgfp]fRf", ifofbfefŠŽ ±ŽžŠÔ,đ'è,·,éxf"f`f} [fNfvf]fOf%of€,Å,·B
Ú,μ,,l,±,ι,ς,δ,²—,,³/₄,³,φ
{button ,EF(`powinst.exe', `TESTBAT /V TESTBAT.DOC',1) } @DISC1:\
BENCH\TESTBAT\TESTBAT.DOC

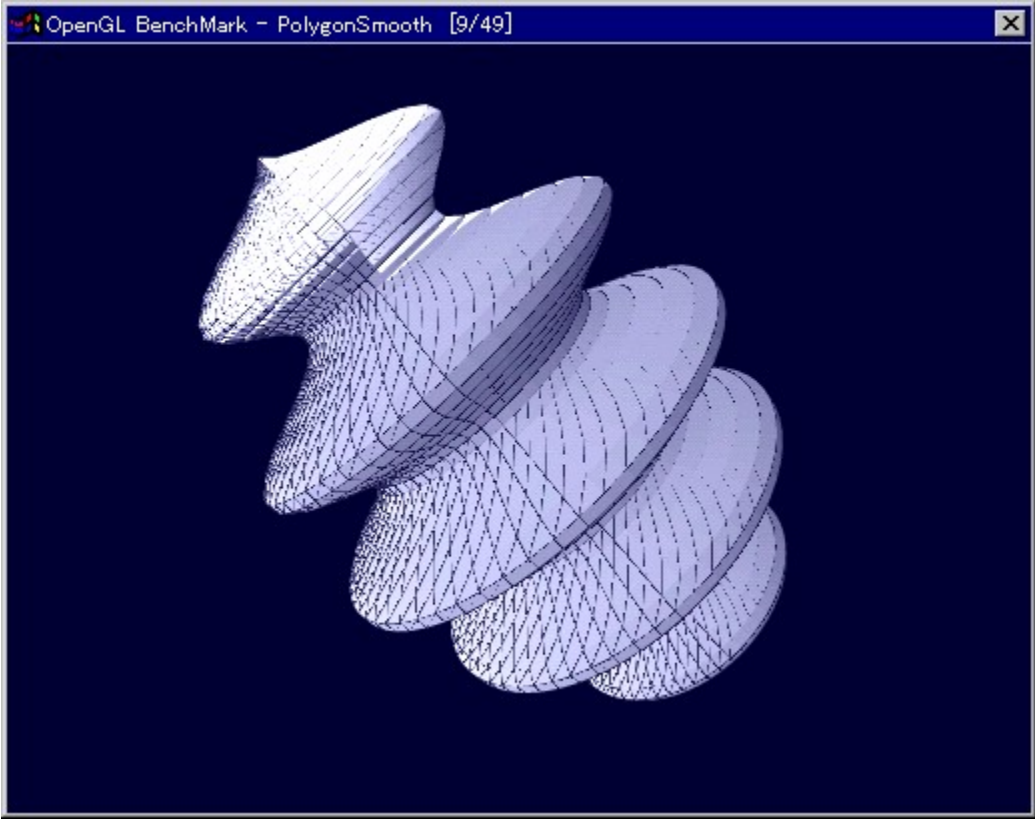
DISC1:\BENCH\TESTBAT

{button ,EF(`powinst', `TESTBAT',1)} ftf@fCf<,jRfs[]

OpenGL Benchmark

fCf“fXfg□[f<,iŽÀ□s

%ooæ-ÊfCf□□[fW



žû~^ftfHf<f_

DISC1:\BENCH\OGLB151!

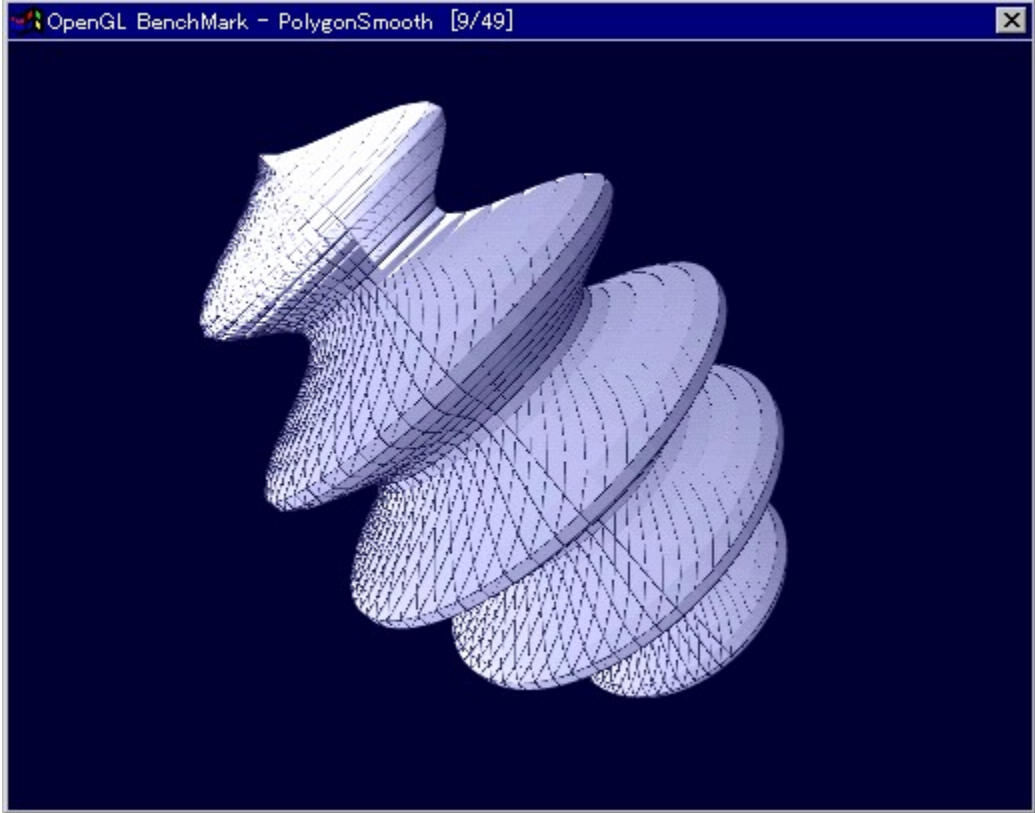
Ⓢ

Yoccy
<http://www.bekkoame.or.jp/~yoccy/index.html>

“à—e

OpenGL, ì•`%œ«”\, ð‘à’è, , é, ½, ß, ìfvf[]fOf%of€, Å, ·B

@Ú, μ, íADISC1:\BENCH\OGLB151\README_J.TXT, ð, ²—, , ¾, ³, çB



OpenGL, ì • ` % œ « " \, ð ' à ' è , . , é , ½ , ß , ì f v f f O f % o f € , Å , • B
U , μ , , í , ± , ç , ð , ² — — , , ¾ , ³ , ç
{ button , EF (` powinst.exe ' , ` OGLB151I / V README_J.TXT ' , 1) } @DISC1 : \
BENCH\OGLB151\README_J.TXT

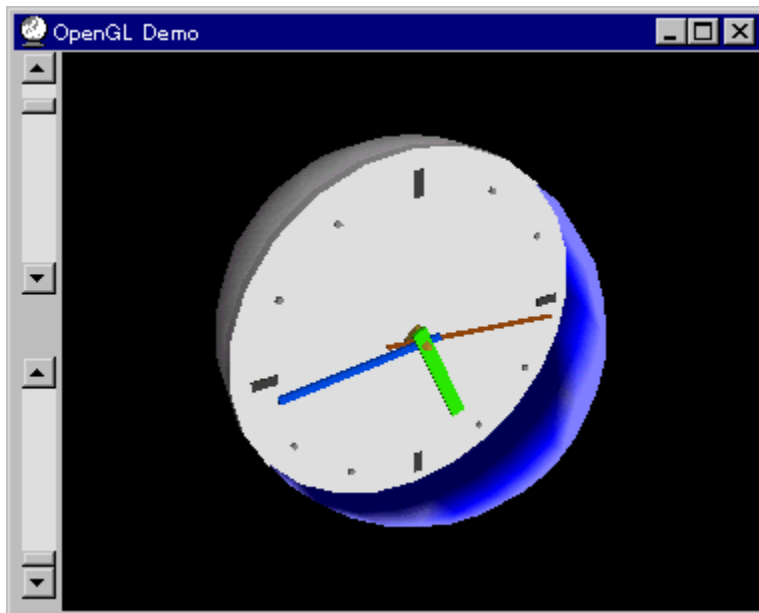
DISC1:\BENCH\OGLB151I

{button ,EF(`powinst',`OGLB151',1)} fCf“fXfg□[f<,iŽÀ□s

OpenGL xYA2Ñ

fCf“fXfg□[f<,iŽÀ□s

%ooæ-ÊfCf□□[fW



Žû~^ftfHf<f_

DISC1:\BENCH\OPENGL11

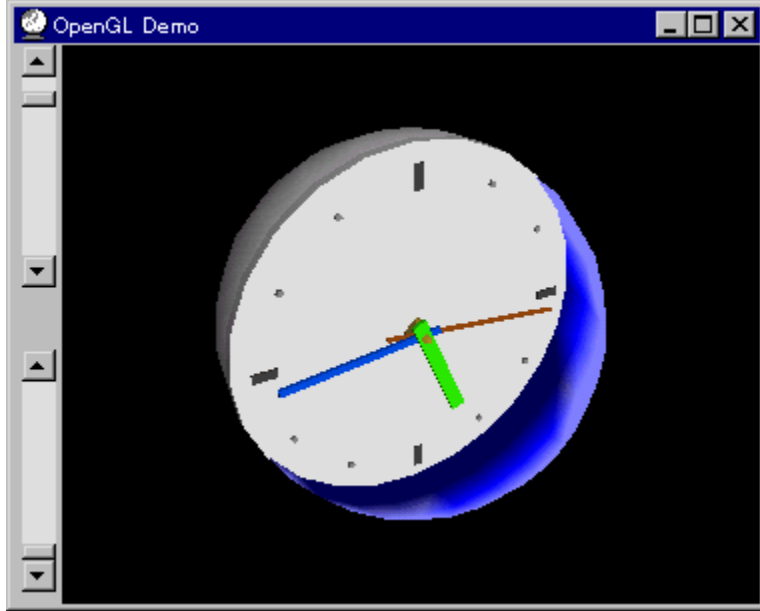
□\$□i

Œ''~□iŒ ŽÒ Silicon Graphics, Inc. "]□Ú□Afff,□i□→ ,ä,ç Ž□

“à—e

OpenGL Benchmark, È, Ç, A OpenGL 'í%ž, ì\ftfg, ì“ ® ì, É•K—v, Èf%of“f^fCf€f%ofCfuf
%ofŠ, Æ, A, » , è, ðŽg, Á, ½ff, fvj[]fOf%of€ , Á, ·[]BfCf“fXfg[]f<, ·, é, ±
, Æ, É, æ, è[]ADLL, ðVfXfef€ftfHf<f_ , ÉfRfs[][, ³, è, Ü, ·[]B

**OpenGL, í[]A Windows 98/NT 4.0 , ”, æ, Ñfo[]fWf†f“4.00.950B^È[]~ , iWindows
95[]i, ç, í, ä, éOSR2[]j, É, í•W[]€, ÁfCf“fXfg[]f<, ³, è, Á, ç
, Ü, ·[]Bfo[]fWf†f“4.00.950a^È‘O, iWindows 95, ð, “Žg, ç
, ì[]é[]‡, ì, Y[]AfCf“fXfg[]f<, ð[]s, È, Á, Ä, , ¾, ³, ç[]B, “Žg, ç
, iWindows, ìfo[]fWf†f“ , í[]AfRf“fgf[][]f<fpjlf<, ìVfXfef€
, ìfvf[]fpfefB, ÁŠm”F, ·, é, ±, Æ, ð, Á, «, Ü, ·[]B**



OpenGL Benchmark, È, Ç, A OpenGL 'Í%ž, Ì\ftfg, Ì" ® Ì, É•K—v, Èf%of“f^fCf€f
%ofCfuf%ofŠ, Æ, A, » , è, ðŽg, Á, ½fff, fvf fOf%of€, Å, · BfCf“fXfg [f<, ·, é, ±
, Æ, É, æ, è ADLL, ðVfXfef€ftfHf<f_ , ÉfRfs [, ³, è, Ü, · B

OpenGL, Í A Windows 98/NT 4.0

, ·, æ, Ñfo [fWf†f“4.00.950B^È~ , ÌWindows 95 i, ç, í, ä, éOSR2 j, É, í•W €
, ÅfCf“fXfg [f<, ³, è, Ä, ç, Ü, · Bfo [fWf†f“4.00.950a^È‘O, ÌWindows
95, ð, Žg, ç, Ìê†, ÌÝ AfCf“fXfg [f<, ðs, È, Á, Ä, , ¾, ³, ç B, Žg, ç
, ÌWindows, Ìfo [fWf†f“ , Í AfRf“fgf [f<fpf<f<, ÌVfXfef€
, Ìvf [fpfefB, ÅŠm”F, ·, é, ±, Æ, ð, Å, «, Ü, · B

DISC1:\BENCH\OPENGL11

{button ,EF(`powinst',`OPENGL11',1)} fCf“fXfg[]f<,iŽÀ[]s

WinGfpftfH [f}f" fXfefXfg GTEST ver.1.2

fCf" fXfg [f<, iŽÀ s

%œ-ÊfCf [fW



žû~^ftfHf<f_

DISC1:\BENCH\GT12G

§

,Ü,é, ,ç Ž

“à—e

WinG,ìfpftfH[f}f“fX,ð‘à’è,·,éfvf[]fOf%of€,Å,·[]B—L-¼,Èfxf“f`f}[]fNfefXfg,Å, ,é3DBEN
CH,Æ“~,¶,æ,æ,ÈEXÆü,ì“‘l,ð[]o,μ,Û,·[]B

@[]Ú,μ,í[]ADISC1:\BENCH\GT12G\README.TXT,ð,²—, ,³/₄,³,ç[]B



WinG,lfpftfH[f}f“fX,đ‘@’è,·,éfvf[fOf%of€,Å,·□B—L-¼,Èfxf“f`f}□[fNfefXfg,Å, ,é3
DBENCH,Æ“~,¶,æ,æ,ÈCEXCEü,ì□”’l,đ□o,μ,Ü,·□B
□Ú,μ,,í,±,¿,ç,đ,²—,.,³/₄,³,φ
{button ,EF(`powinst.exe',`GT12G /V README.TXT',1) }□@DISC1:\BENCH\
GT12G\README.TXT

DISC1:\BENCH\GT12G

{button ,EF(`powinst',`GT12G',1)} fCf“fXfg[]f<,iŽÀ[]s

