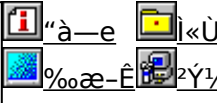


fxf" f` f} [fNfvf fOf%of€ 21- {

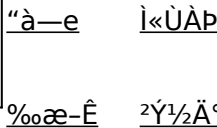
ŠeŽifxf" f` f} [fN AfVfXfef€ î•ñ•Ž!f\ftfgfEfFfA,Å,·B



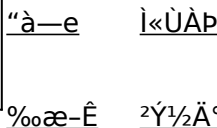
Diskdrive benchmark on Win32 1.22 UP!
@ @ \$ @ F' É " c — Y " ñ Ž
@ @ @ @ @ @ <http://www.inco.ne.jp/~tsukada/>
Win32ŠÅ«iWindows 98/95/NT 4.0/NT 3.51j%º,É," , ,é AfŠf€ [f ofuf<f fffBfA,đ,Ó,,pffBfXfNfhf
%ofCfu,lfpftfH [f} f" fX,đ'a'è, ,éfvf fOf%of€,Å,·B



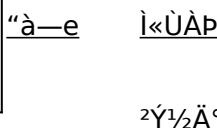
WCPUID.EXE Version 2.0 for Win32
@ @ @ \$ @ F.H.Oda!Ž
@ @ @ @ @ @ <http://www2.tky.3web.ne.jp/~nrklv/>
Windows 95/NT 4.0 ä, Å ACPU, lfNf fbfNŽü" g" A, ,æ, NMMXfefNfmf fWfTf [fg, l—L-³, đ'a'è, ,éfvf fOf%of€, Å,·B



,d,p,t,h,o,X,T @for @Win32 @V3.10 pŽ @œšJ" Å
@ @ @ \$ @ FŠi'½ T
@ @ @ @ @ @ <http://ring.aist.go.jp/openlab/kitaro/>
CPU AHDD Af f, fŠ AfVfXfef€, É, Ç APC, l, ,ç, ä, é î•ñ, î•Ž! Afxf" f` f} [fN, đs, É, xftfg, Å, ·B



PFM686 —p C%ü•İ CWSDPMI @iDPMI server j,», İ,R
@ @ @ \$ @ FÇ ' i FCharles W Sandmann @%ü•İ F i, ±, ¶ j Ž
PFM686 ver2.0 ^ È ~, đ " @ ì, ³, ¹, é, ½, ß, É •K —v, È DPMI fT [fo [L, Å, ·B



Š"Ž @%ižD fAfC EfI [Eff [f ^< @Ší GaBench Version.1.32



Remedy Entertainment Ltd. & VNU European Labs
<http://www.remedy-ent.com/fr/>

“à—e ì«ÙÀP

%œ-Ê ²Ý½Ä

3D,ì·`%œ«“\,ð’è,·,éxf“f`f}[]fNf\ftfg,Ä,·B



fíE vZZvf fOf%œ fE ufX[]fp[]fi Ver 1.1 v
“E<ž’šw<à“cEæ†ž°
<http://www.cc.u-tokyo.ac.jp/>

“à—e ì«ÙÀP

%œ-Ê ²Ý½Ä

%~žü—;[]if[]j,ðE vZZ,³,¹,ÄCPU,âf[]f,š[]AHDD,È,Ç,ì«“\,ðE v’è,·,é\ftfg,Ä,·B



fQ[]fE—pfOf%œftfBfbfNxf“f`f}[]fNfefXfg GBENCH32 3.0
“E,é,·ç Ž

“à—e ì«ÙÀP

%œ-Ê ²Ý½Ä

fOf%œftfBfbfN,ì«“\,ð’è,·,évf[]fOf%œfE,Ä,·B

PFM486 Ver.1.77H ·]œž”Ä
“E’æŽO<ž·l Ž

“à—e ì«ÙÀP

%œ-Ê ²Ý½Ä

386 ^È~,ì x86 CPU ,ðžg,Á,½ PC ,ìŠO·”f[]f,š[]«“\,ð’è,·,évf[]fOf%œfE,Ä,·B

Performance meter for Intel 686 ver 2.1A
“E,±,¶[]ž[]A’æŽO<ž·l Ž

“à—e ì«ÙÀP

%œ-Ê ²Ý½Ä

Pentium ^È~,ìCPU,ðžg,Á,½ PC ,ìŠO·”f[]f,š[]fNfZfX’—“x,ð’è,·,évf[]fOf%œfE,Ä,·B



ff,fš[fxf“f f}][fN CORETEST/97 1.01

☐@☐@☐\$☐☐F“O“c<X<> Ž☐

“à—e ì«ÙÀp

%ooæ-Ê ²Ý½Ä

f}fVf“,lf☐f,fšfAfNfZfXfXfs☐[fh,ð‘a’è,.,éfvf☐fOf%of€,Å,·☐B

VTBENCH DOS/V Text Video Benchmark Ver. 1.2

☐@☐@☐\$☐☐F-k’º•q•F Ž☐

☐@☐@☐@☐@☐@<http://www.cadin.or.jp/users/baxsoft/>

“à—e ì«ÙÀp

%ooæ-Ê ²Ý½Ä

DOS/V,lfefLfXfg%ooæ-ËŠÖEW,lfXfs☐[fh,ðEv’ª,.,éfvf☐fOf%of€,Å,·☐B

WHATIDE

☐@☐@☐\$☐☐FTom Warren Ž☐

“à—e ì«ÙÀp

²Ý½Ä

DOS☐ã,ÅIDE,lfn☐[fhfffBfXfN,ì☐î•ñ,ð•\Ž|,.,éfvf☐fOf%of€,Å,·☐B

fm☐[fg,o,b—pfofbfefšfefXfgfvf☐fOf%of€ Revision 0.21

☐@☐@☐\$☐☐F^ä”V☐ã ~a☐OŽ☐

“à—e ì«ÙÀp

%ooæ-Ê ²Ý½Ä

fm☐[fgfpjvRf“,lfofbfefšŽ☐±ŽžšÖ,ð‘a’è,.,éxf“f f}☐[fNfvf☐fOf%of€,Å,·☐B



OpenGL Benchmark

☐@☐@☐\$☐☐FYoccyŽ☐

☐@☐@☐@☐@☐@<http://www.bekkoame.or.jp/~yoccy/index.html>

“à—e ì«ÙÀp

%ooæ-Ê ²Ý½Ä

OpenGL,ì•`%ooæ☐«”,ð‘a’è,.,é,½,ß,lfvf☐fOf%of€,Å,·☐B



OpenGL xYA²Ñ

OpenGL Benchmark, È, Ç, A OpenGL 'í%ž, ì\ftfg, ì" © ì, É•K—v, Èf%of“f^fCf€f%ofCfuf%ofŠ, ÆA, » , ê, ð Žg, Á, ½ff, f, %of€ , Å, ·B

“à—e ì«ÙÀP

%œ-Ê ²Ý½Ä



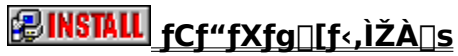
WinGfpftfH[f}f“fXfefXfg GTEST ver.1.2

WinG, ìfpftfH[f}f“fX, ð'ª'è, ·, éfvf[]fOf%of€ , Å, ·B

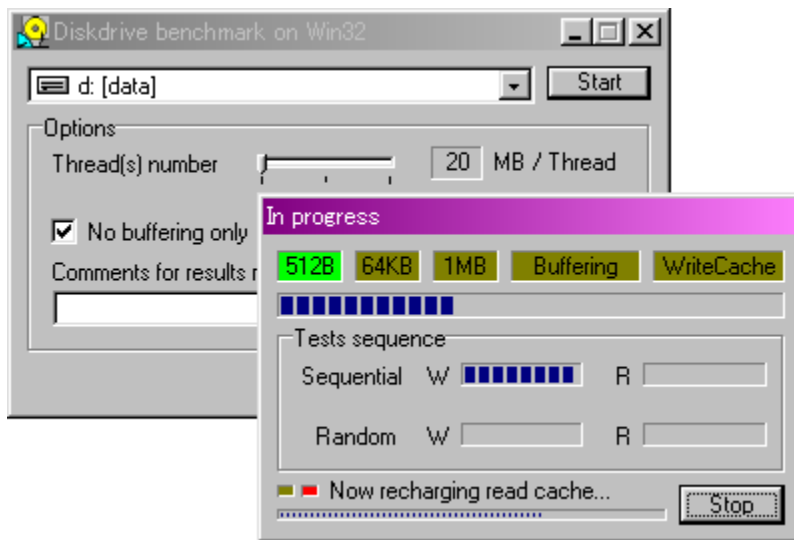
“à—e ì«ÙÀP

%œ-Ê ²Ý½Ä

Diskdrive benchmark on Win32 1.22



‰œ-ÊfCf[]fW



žû~^ftfHf<f_

DISC1:\BENCH\DBNCH122



[]\$[]

'Ë" c—Y"ñŽ
<http://www.inco.ne.jp/~tsukada/>

“à—e

Win32ŠÂ««iWindows 98/95/NT 4.0/NT 3.51j%º,É,¨,¯,éAšf€[fofuf<f[]ffBfA,đ,Ó,-
,pffBfXfNfhf%ofCfu,lfpftfH[f}f“fX,đ‘a’è,·,évfj[]Of%of€,Å,·[]B

 **BROWSE** @Ú,µ,ÍADISC1:\BENCH\BNCH122\BENCH32.HTM,đ,²—,.,³/₄,³,ç[]B

Win32ŠÂ««iWindows 98/95/NT 4.0/NT 3.51j
%oº,É,¨,¯,éAfŠf€[f ofuf<f fffBfA,ð,Ó,,PfffBfXfNfhf
%ofCfu,lfpftfH[f}f“fX,ð‘a’è,·,évf[fOf%of€,Å,·B
U,µ,,Í,±,¿,ç,ð,²—,³/4,³,ç
{button ,EF(‘ powinst.exe’,` DBNCH122 /V
DBENCH32.HTM',1) }@DISC1:\BENCH\DBNCH122\DBENCH32.HTM

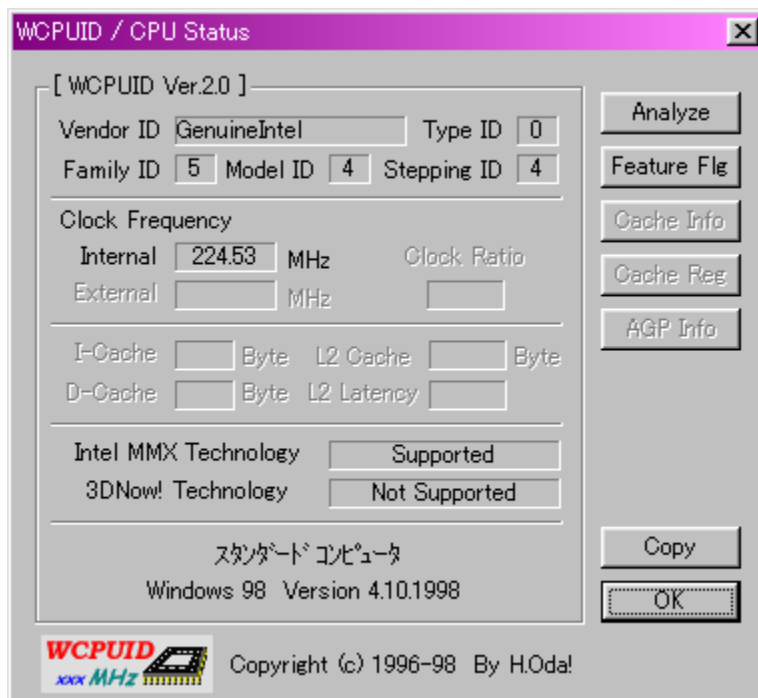
DISC1:\BENCH\DBNCH122

{button ,EF(`powinst',`DBNCH122',1)} fC“fXfg[]f<,iŽÀ[]s

WCPUID.EXE Version 2.0 for Win32

fCf“fXfg□[f<,iŽÀ□s

%œ-ÊfCf□□[fW



Žú~^ftfHf<f_

DISC1:\BENCH\WCPU200

□\$□ì

H.Oda!Ž□
<http://www2.tky.3web.ne.jp/~nrklv/>

“à—e

Windows 95/NT 4.0□ã,Å□ACPU,ìfNf□fbfNŽü”g□”□A,,”æ,ÑMMXfefNfmf□fWfTf|□[fg,ì—
L-³,đ’^à’è,·,éfvf□fOf%of€,Å,·□B
Intel□AAMD□ACyrix□AIDT,ìŠeŽíCPU,É’í%ž,μ,Ä,ç,Ü,·□B

[□@□Ú,μ,í□ADISC1:\BENCH\WCPU200\WCPUID.TXT,đ,²—,.,³/₄,³,ç□B](#)

Windows 95/NT 4.0 Ā ACPU, ĩfNf ĩbfNŽü”g ĩ” ĩA, ĩ, æ, ŃMMXfefNfmf ĩfWfTf|
 ĩ[fg, ĩ—L-³, đ’ǎ’è, , éfvf ĩfOf%of€ , Ā, · ĩB
 Intel ĩAAMD ĩACyrix ĩAIDT, ĩŠeŽíCPU, É’î%ož, μ, Ā, ϕ, Ü, · ĩB
 ĩÚ, μ, , ĩ, ±, ĩ, ϕ, đ, ²—, , ³/₄, ³, ϕ
 {button ,EF(`powinst.exe', `WCPU200 /V WCPUID.TXT',1) } ĩ@DISC1:\
BENCH\WCPU200\WCPUID.TXT

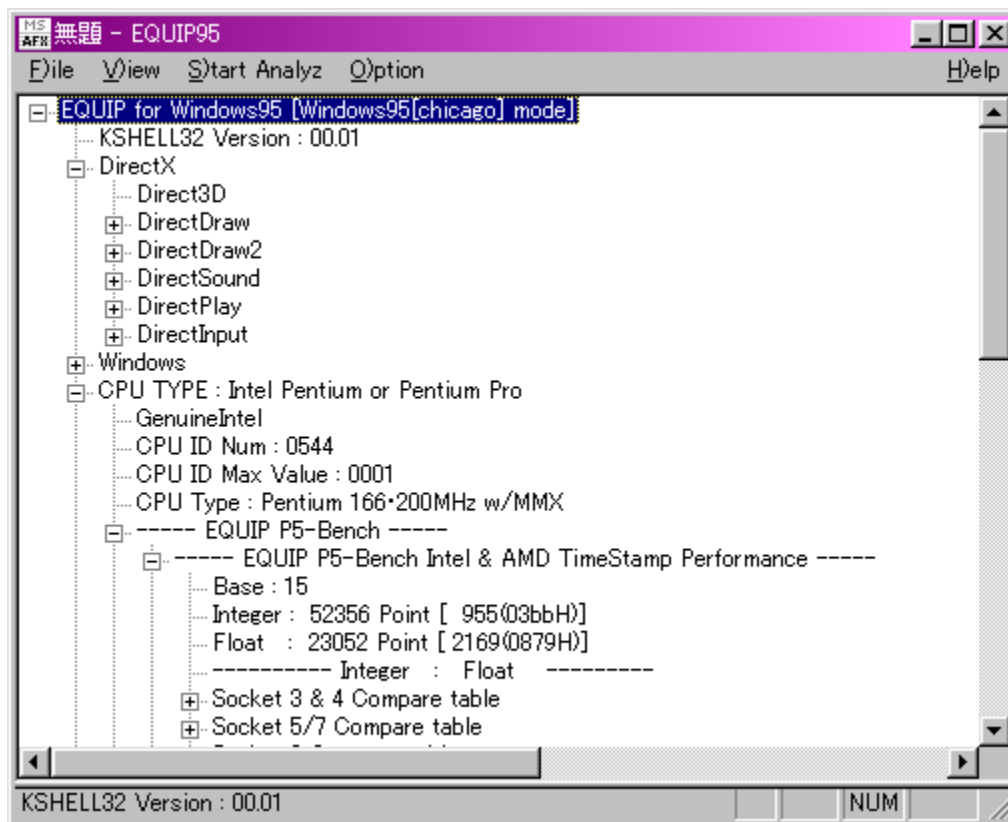
DISC1:\BENCH\WCPU200

{button ,EF(`powinst',`WCPU200',1)} fCf“fXfg□[f<.lŽÀ□s

,d,p,t,h,o,X,T @for @Win32 @V3.10 ³Ž®ŒöŠJ”Å

fC“fXfg [f<,iŽÀ s

%oæ-ÊfCf [fw



Žû~^ftfHf<f_

DISC1:\BENCH\EQ953100

□\$□i

Ši'½~T

<http://ring.aist.go.jp/openlab/kitaro/>

“à—e

CPU□AHDD□Af□f,fŠ□AfVfXfef€.,È,Ç□APC,ì, ,ç,ä,é□î•ñ,ì•\Ž!□Afxf“f`f}□[fN,ð□s,È,xf\ftfg,Å,·□B

CPU AHDD Af f, fŠ AfvfXfef€, È, Ç APC, ì, , ç, ä, é î•ñ, ì•\
Ž! Afxf“f`f} [fN, ð s, È, æf\ftfg, Å, · B

DISC1:\BENCH\EQ953100

{button ,EF(`powinst',`EQ953100',1)} fC“fXfg[]f<,iŽÀ[]s

PFM686 —p C%ü•İ CWSDPMI @ iDPMI server j,»,ì,R

 **COPY** ftf@fCf<,lfRfs

Žû~^ftfHf<f_

DISC1:\BENCH\CWSDPMI3

§ì

CE´i Charles W Sandmann @%ü•İ F i,±,¶jŽ

“à—e

PFM686 ver2.0^È~„đ“@i,^{3,1}é,½,ß,É•K—v,ÈDPMI fT[fo[.Å,·B

@Ú,μ,ÍADISC1:\BENCH\CWSDPMI3\README.TXT,đ,²—,.,³/₄,³,tB

PFM686 ver2.0^È~ ,đ“ ®ï,³,¹,é,½,ß,É•K—v,ÈDPMI fT[fó[.Å.·B
Ú,μ,,Í,±,¿,ç,đ,²—,³/4,³,ç
{button ,EF(`powinst.exe', `CWSDPMI3 /V README.TXT',1) }@DISC1:\
BENCH\CWSDPMI3\README.TXT

DISC1:\BENCH\CWSDPMI3

{button ,EF(`powinst',`CWSDPMI3',1)} ftf@fCf<,lfRfs[

Š”Ž®%oïŽĐ fAfC Efi Eff f^ <@Ší GaBench Version.1.32

ftf@fCf<,lfRfs

%oæ-ÊfCf fW

GaBench version 1.32 (1024*768 16 bit)

Category	Test	Value
BitBlt	Screen to Screen(srcopy)	68.810 Mpix/s
	ColorMemory to Screen	19.485 Mpix/s
	MonoMemory to Screen	110.758 Mpix/s
	Screen to Screen (ROPS)	3.467 Mpix/s
PatBlt	Solid Color	187.306 Mpix/s
	Color Pattern	74.257 Mpix/s
TextOut	System Font	542.664 Kchr/s
	TrueType Font	95.200 Kchr/s
Line	Solid Line(copypen)	8.781 Mpix/s
	Styled Line(ROPS)	1.659 Mpix/s
Polygon	Solid Color(copypen)	150.846 Mpix/s
	Hatched(ROPS)	22.002 Mpix/s
DirectDraw	Pattern Bit (VRAM to VRAM)	0.000 Mpix/s
DirectDraw	Scroll and Sprites	0.000 line/s
DirectDraw	Line Scroll and Sprites	0.000 line/s
Direct3D (640x480 16bit Color)	Texture Mapping	0.000 Mpix/s
	Alpha Blending	0.000 Mpix/s
	Polygon Throughput (26pixel)	0.000 Kpoly/s
	Over Drawing (Front to Back)	0.000 Kpoly/s
	Over Drawing (Back to Front)	0.000 Kpoly/s
	Z-Buffer Fill Rate (16bit depth)	0.000 Mpix/s

GaBench (c) 1997, 1998 LO DATA DEVICE, INC.
GDI Total: **88.10** [GDI]
DirectX Total: [DirectX]
DirectDraw Total: Direct3D Total:
[All] [Copy] [OK] [Quit]

Žû~^ftfHf<f_

DISC1:\BENCH\GABNC132

§

Š”Ž®%iŽĐ fAfC Efi Efff f^ <@Ší
<http://www.iodata.co.jp/>

“à—e

Microsoft Windows95/NT ě, Ā APC, ì•`%œ”\—Í, đĀv’ª, ., é, ½, ß, ìftfgfEjFfA, Ā, ·B
frfffìf`fbfv, ÌŠì- {“l, È”\—Í, đ’ª, é, ±, Æ, đdŽ<, μ, Ā ì, ç, ê, Ā, ç, Û, ·B

Ž©ĀÈ“WŠJĀ` Ž®, ìftf@fCf<, Æ, È, Ā, Ā, ç, Û, ·, ì, Ā “K”-
, ÈftfHf<f_, ÉRfs [L, μ, Ā, ©, çŽĀ s, μ, Ā, , ¾, ³, ç B

@Ú, μ, í ADISC1:\BENCH\GABNC132\README.TXT, đ, ²—, , ¾, ³, ç B

Microsoft Windows95/NT Ā, Å APC, ì • ` % œ " \ — Í, ð Ć v ' ¢, ·, é, ½, ß, ð \
ftfgfEjFfA, Å, · B
frffffj`fbfv, Ì Š î - { " I, È " \ — Í, ð ' ¢, é, ±, Æ, ð d Ž <, μ, Ä ð ì, ç, ê, Ä, ç, Ü, · B

Ž © Ć È " W Š J Ć ` Ž ®, ì ftj @ f C f <, Æ, È, Á, Ä, ç, Ü, ·, ì, Å A " K " -
, È ftj H f < f _ , É f R f s [, μ, Ä, ©, ç Ž Ä s, μ, Ä, , ¾, ¾, ç B
U, μ, Ì, ±, ÷, ç, ð, ² — —, ¾, ¾, ç

{button ,EF(`..\MENUDATA\IMPVIEW.EXE', `GABNC132\
README.TXT', 1) } @DISC1:\BENCH\GABNC132\README.TXT

DISC1:\BENCH\GABNC132

{button ,EF(`powinst',`GABNC132',1)} ftf@fCf<,lfRfs[

Š”Ž®%oiŽĐ fAfC□Efi□□Eff□[f^<@Ší fAfvfŠfxf“f`

fC“fXfg□[f<,iŽÀ□s

%oæ-ÊfCf□□[fW



Žû~^ftfHf<f_

DISC1:\BENCH\WKAPB

□\$□i

Š”Ž®%oiŽĐ fAfC□Efi□□Eff□[f^<@Ší
<http://www.iodata.co.jp/>

“à—e

Windows 95 ĀŽÀŮ, ÉfAfvfŠfP[fVf#f“, đŽÀ[s, μ, ½, Æ, «, lfVfXfef€«”\, đ•]‰
¿, ·, éfvf[fOf%of€, Ā, ·BfAfvfŠfP[fVf#f“, đŽg—p, μ, Āfxf“f`f} [fN, đŽæ, é, ½, ß Af`f...
 [fjf“fO, đ[s, È, x[é[#, ÉŽÀŮ, ÌŽg—
pŽž, É, Ç, è, ¾, ~“x, Æü[ã, ·, é, Ì, ©, [A”äŠr“l•ª, ©, è, â, ·, È, Á, Ä, ç, Ü, ·[B
'à'è[€—Ú[F“d`ì, Āfxf“f`f} [fN Af[f, ' , Āfxf“f`f} [fN AfyfCf“fg, Āfxf“f`f} [fN

Windows 95 ě, ÅŽÀÛ, ÉfAfvfŠfP[fVf†f“, ðŽÀs, μ, ½, Æ, «, ìVfXfef€«”\, ð•]‰
¿, ·, éfvfOf%of€, Å, ·BfAfvfŠfP[fVf†f“, ðŽg—
p, μ, Åfxf“f`f} [fN, ðŽæ, é, ½, ßAf`f... [fjf“fO, ðs, È, xê†, ÉŽÀÛ, ìŽg—
pŽŽ, É, Ç, ê, ¾, ¯´“x, Æüã, ·, é, ì, ©, ÆA”äŠr“l•ª, ©, è, â, ·, , É, Á, Ä, †, Ü, ·B
‘ª’è€-ÚF“d’ì, Åfxf“f`f} [fN Af, , Åfxf“f`f} [fN AfyfC“fg, Åfxf“f`f} [fN

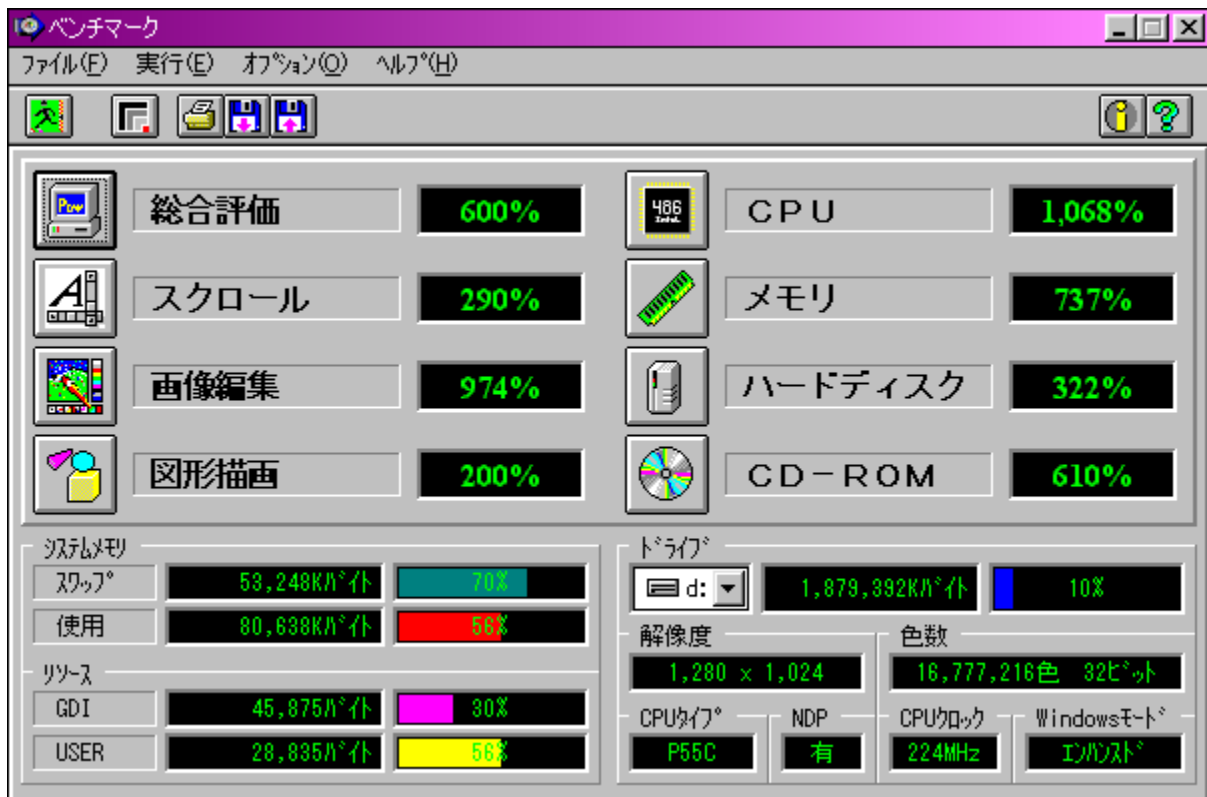
DISC1:\BENCH\WKAPB

{button ,EF(`powinst',`WKAPB',1)} fCf“fXfg□[f<,iŽÀ□s

Š”Ž®%œiŽĐf□f<fR f□f<fRfxf“f`f}□□[fN Ver1.30

ftf@fCf<,lfRfs□□

%œæ-ÊfCf□□[fW



Žú~^ftfHf<f_

DISC1:\BENCH\MELCO

☞☞

Š”Ž®%iŽĐfƒR
<http://www.melcoinc.co.jp/>

“à—e

PC,ì☞☞#pftfH☞[f}f“fX,đ’è,·,évf☞fOf%of€,Å,·☞BWord Pad,đŽg—
p,μ,½fXfNf☞☞[f☞AfyfCf“fg,Å,ì%œ’œ·`ŽÊ,â☞ACPU☞Af☞f,fŠ☞Afn☞[fhfffBfXfN☞ACD-
ROM,ì☞☞\,đ’è,·,é,±,Æ,ª,Å,«,Ü,·☞B

“K“-,ÈftfHfƒf_ÉfRfs☞[,μ,½CEã☞ASetup.exe,đŽÀ☞s,μ,Ä,,¾,¾,¢☞B

PC,ì'□□#fpftfH□[f}f“fX,đ'á'è,·,éfvf□fOf%of€,Å,·□BWord Pad,đŽg—
p,μ,½fXfNf□□[f<□AfyfCf“fg,Å,ì
%oæ'œ•`ŽÉ,â□ACPU□Af□f,fŠ□Afn□[fhfffBfXfN□ACD-ROM,ì□«”\,đ'á'è,·,é,±
,Æ,ª,Å,«,Ü,·□B

“K”-,ÈftfHf<f_,ÉfRfs□[,μ,½CEã□ASetup.exe,đŽÀ□s,μ,Ä,,¾,³,¢□B

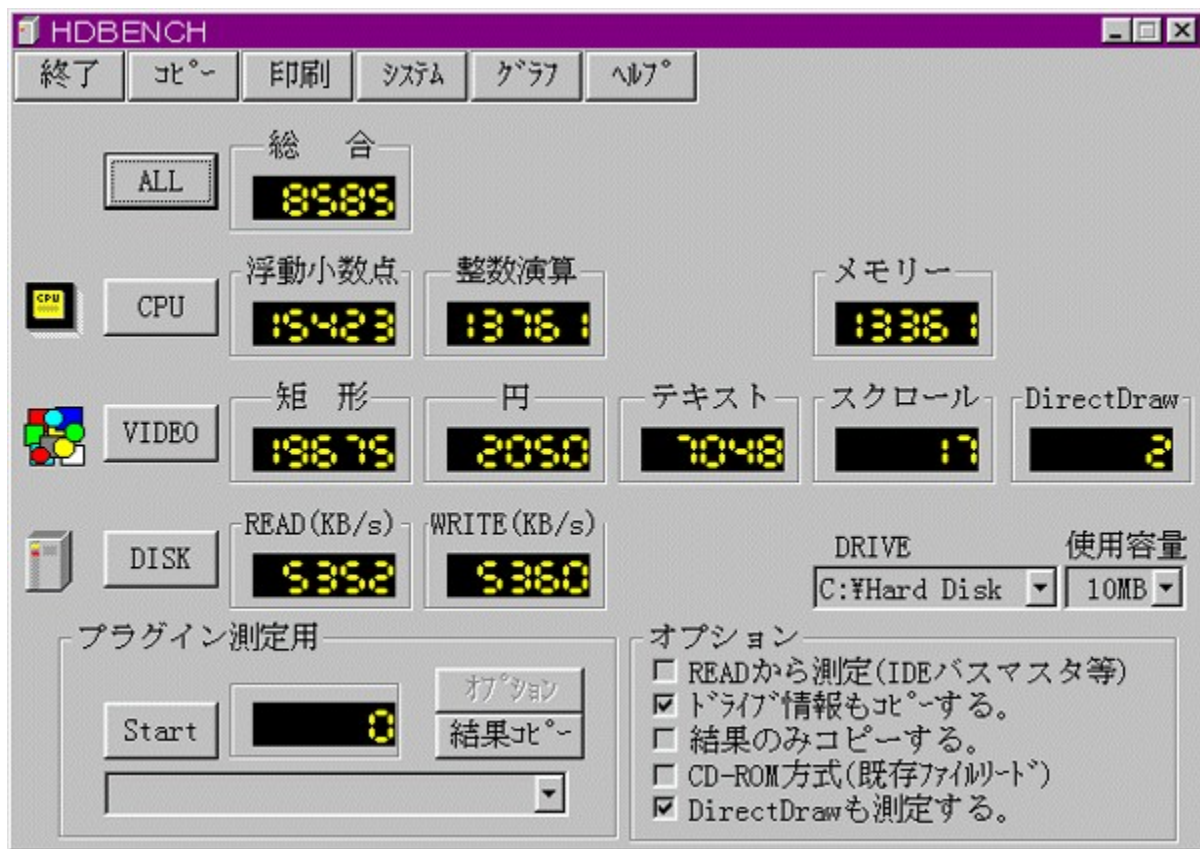
DISC1:\BENCH\MELCO

{button ,EF(`powinst',`MELCO',1)} ftf@fCf<,lfRfs[

HDBENCH(ハードディスクベンチマーク) Ver 2.61

http://www.fujitsu.com/japan/products/peripherals/hdbench/

ダウンロード



インストール

DISC1:\BENCH\HDBE261

␣\$␣ì

EP82%ü/,©,„ Ž
<http://www.lares.dti.ne.jp/~ep82kazu/>

“à—e

fn␣[fhfffBfXfN␣A•`%œ␣ACPU,ì'¬,³,ð'â'è,·,évf␣fOf%of€,Å,·␣B^È%º,ì␣€-Ú,É,Â,ç
,Ä,ì'â'è,ð␣s,É,ç,Û,·␣B
␣Efn␣[fhfffBfXfN
fŠ␣[fh␣Af%ofCfG␣AfLfffbfVf...ì1•bŠÔ,ì"']—byte␣"
␣E•`%œ
1•bŠÔ,ì<é€`␣•%œ~␣•fXfNf␣␣[f<,ì•`%œ%œñ␣"
␣ECPU
1•bŠÔ“-,½,è,ì•,“®␣-␣”“_%%œŽZ␣•␣®␣”%%œŽZ,ì€vŽZ%œñ␣”

[␣@␣Ú,μ,í␣AHDBENCH.HLP,ð,²—,¾,¾,ç␣B](#)

fn[fhfffBfXfN]A•`%œ[ACPU,ì¬,³,ð'á'è,·,éfvf[fOf%of€,Å,·B^È%º,ì€-
Ú,É,Â,ç,Ä,ì'á'è,ð[s,È,ç,Û,·B
[Efn[fhfffBfXfN
fŠ[fh[Af%ofCfG[AfLfffbfVf...,ì1•bŠÔ,ì"]—byte"
[E•`%œ
1•bŠÔ,ì<é€`[•%~[•fXfNf[[f<,ì•`%œ%ñ"
[ECPU
1•bŠÔ"-,½,è,ì•,"®[¬[""_%%ŽZ[•®["%%ŽZ,ìEvŽZ%ñ"
[Ú,μ,í,±,¿,ç,ð,²—,,¾,³,ç
{button ,EF(`powinst.exe',`HDBE261 /V
HDBENCH.HLP',1) }[HDBENCH.HLP

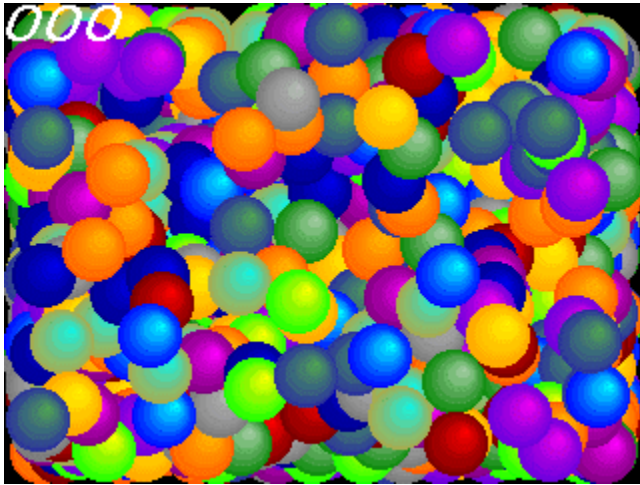
DISC1:\BENCH\HDBE261

{button ,EF(`powinst',`HDBE261',1)} fC“fXfg[]f<,iŽÀ[]s

DDBENCH(DirectDrawíÞÝÁ) Ver 1.41

fCf“fXfg□[f<,iŽÀ□s

%œ-ÊfCf□□[fW



Žú~^ftfHf<f_

DISC1:\BENCH\DDBEN141

□\$□ì

EP82%œü/,©,, Ž□
<http://www.lares.dti.ne.jp/~ep82kazu/>

“à—e

DirectDraw,ì•`%œ'¬“x,ð'²'è,·,éfvf□fOf%of€,Å,·□BŽÀ□s,·,é,Æ□A2,000-‡,ÌSPRITE,ð•\
Ž!,³,¹,¹/₂,Æ,«,ì,P•bŚÔ,ì%œ-Ê□',«Ś·,ì%ñ□”“,ð□¶□ã,É•\Ž!,μ,Û,·□B
DirectDraw,í□ADISC2,É“ü,Á,Ä,ç,éDirectX,ðfCf“fXfg□[f<,·,é,±,Æ,É,æ,èŽg—p,Å,«,Û,·□B

□@□Ú,μ,·,í□ADDBENCH.HLP,ð,²—,·,³/₄,³,ç□B

DirectDraw,ì•`%œ'¬“x,đ'â'è,·,éfvf□fOf%of€,Å,·□BŽÀ□s,·,é,Æ□A2,000-
‡,ìSPRITE,đ•\Ž!,³,¹,¹/₂,Æ,«,ì,P•bŠÔ,ì%œ-Ê□',«Š·,!'%ň□”,đ□¶□ã,É•\Ž!,μ,Ü,·□B
DirectDraw,í□ADISC2,É“ü,Á,Ä,ç,éDirectX,đfCf“fXfg□[f<,·,é,±,Æ,É,æ,èŽg—
p,Å,«,Ü,·□B
□Ú,μ,,í,±,¿,ç,đ,²—,„³/₄,³,ç
 {button ,EF(`powinst.exe',`DDBEN141 /V
DDBENCH.HLP',1) }□@DDBENCH.HLP

DISC1:\BENCH\DDBEN141

{button ,EF(`powinst',`DDBEN141',1)} fC“fXfg[]f<,iŽÀ[]s

Final Reality Ver1.01

fCf“fXfg□[f<,iŽÀ□s

%oæ-ÊfCf□□[fW



Žú~^ftfHf<f_

DISC1:\BENCH\FR101

□\$□i

Remedy Entertainment Ltd. & VNU European Labs
<http://www.remedy-ent.com/fr/>

“à—e

3D,ì•`%œ«”\,ð‘à’è,·,éfxf“f`f}[]fNf\ftfg,Å,·□B
DirectX,Å,ì•`%œ«”\,ì,Ù,©□AAGPfofX,ì“]’—f□□[fg,à‘à’è,Å,«,Ü,·□B

3D, ì·`%œ«" \, ð'è, ·, éfxj" f` f} [fNf\ftfg, Å, ·B
DirectX, Å, ì·`%œ«" \, ì, Ù, ©AAGPfofX, ì"]'—fE [fg, à'è, Å, «, Ù, ·B

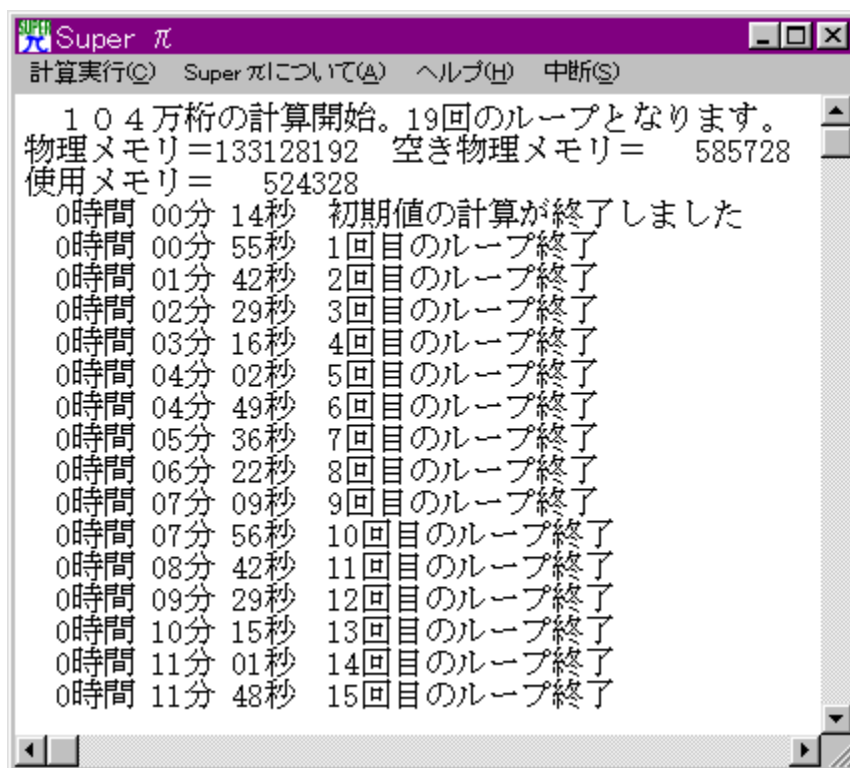
DISC1:\BENCH\FR101

{button ,EF(`powinst',`FR101',1)} fC“fXfg[]f<,iŽÀ[]s

Super π Ver 1.1

Super π

Super π



Super π

DISC1:\BENCH\SUPERPAI

§

“Šwà”cEα†Ž°
<http://www.cc.u-tokyo.ac.jp/>

à—e

%~Žü—!iflj,đCEvŽZ,^{3,1}ÄCPU,âfj,fšAHDD,È,Ç,ì«”\,đCEv’²,,éftfg,Å,·B
_ ^È%²1-æ6çCE...,©,ç3,355-æCE...,Ü,ÄCEvŽZ,^{3,1}é,±,Æ,²Ä,«,Ü,·B

fvf%ofOfCf”,đŽg,Á,Äftf@fCf·fRfs[l,·,éÜAfRfs[læ,ÉŽw’è,μ,½ftfHf·f_,ì
%²,ÉuSuper_pi[v,Æ,ç,æftfHf·f_,²i¬,³è,ÄfRfs[l,³è,Ü,·B

%o~Žü—![]ifl[]j,đŒvŽZ,^{3,1},ÄCPU,âf[]f,fš[]AHDD,È,Ç,ì[]«”\,đŒv’^a,·,éftfg,Å,·[]B
[]¬[]””^È%^o1-œ6[]çŒ...,©,ç3,355-œŒ...,Ü,ÅŒvŽZ,^{3,1},é,±,Æ,^a,Å,«,Ü,·[]B

fvf

%ofOfCf“,đŽg,Á,Äftf@fCf<fRfs[][,·,é[]Ū[]AfRfs[][]æ,ÉŽw’è,μ,½ftfHf<f_,ì
%^o,É[]uSuper_pi[]v,Æ,ç,¼ftfHf<f_,^a[]ì[]¬,³,ê,ÄfRfs[][,³,ê,Ü,·[]B

DISC1:\BENCH\SUPERPAI

{button ,EF(`powinst', `SUPERPAI',1)} ftf@fCf<,lfRfs

GBENCH32 3.0

fCf“fXfg□[f<,ižÀ□s

%oæ-ÊfCf□□[fW



žû~^ftfHf<f_

DISC1:\BENCH\GBENCH30

§

,Ü,é, ,ç Ž

“à—e

fOf%oftfBfbfN,ì«”\,đ’è,·,évf fOf%of€,Å,·B32bit,lfXfvf%ofCfGfGf“fWf”,đ—~—
p,μ,ÄA10•bŠÓ,É%œ-Ê,ì’,«Š,!,đ%½%ñs,È,!,é,©•Z!,μ,Ú,·B

@Ú,μ,,íADISC1:\BENCH\GBENCH30\README.TXT,đ,²—,,³/₄,³,çB

fOf%oftfBfbfN,ì«" \,đ'â'è,·,éfvf[]fOf%of€,Å,·B32bit,lfXfvf%ofCfgrGf"fwf",đ—~—
p,μ,ÄA10•bŠÔ,É%œ-Ê,ì',«Š·,|,đ%½%ñs,È,|,é,©•\Ž!,μ,Û,·B
[]Ú,μ,,Í,±,¿,ç,đ,²—,,³/₄,³,¢
{button ,EF(`powinst.exe', `GBENCH30 /V README.TXT',1) }[]@DISC1:\
BENCH\GBENCH30\README.TXT

DISC1:\BENCH\GBENCH30

{button ,EF(`powinst',`GBENCH30',1)} fC“fXfg□[f<,iŽÀ□s

PFM486 Ver.1.77H •]‰œž”Å

fCf“fXfg□[f<,iŽÀ□s

‰œ-ÊfCf□□[fW

```
Performance of 486-PC Ver1.77h(C)1992-1995 DysanKeihin
H-----H
| P54C Frequency = 19.35 MHz Machine:AT v1.77h|
| CPUID Results = GenuineIntel Fam 5 Mdl 2 Stp12 |
| Ecache Read Time =4227 ns/dword (...wait, 1mb/s)|
| Ecache Write Time =4054 ns/dword (...wait, 1mb/s)|
| Memory Read Time =7835 ns/dword (...wait, 1mb/s)|
| Memory Write Time = 752 ns/dword (...wait, 5mb/s)|
H-----H
```

Žû~^ftfHf<f_

DISC1:\BENCH\PFM_177H

□\$□ì

‘æŽO<ž•I Ž□

“à—e

386 ^Ê□~,ì x86 CPU ,đŽg,Á,½ PC ,iŠO•”f□f,fŠ□«”\,đ‘a’è,.,éfvf□fOf‰œ€

,Å,·□Bf□f,fŠfo□[fXfgfŠ□[fh□Af□f,fŠf%ofCfg□AŠO•"fLffffbfVf...fŠ□[fh□AŠO•"fLffffbfVf...f
%ofCfg,í□«"\\,đ'ª'è,·,é,±,Æ,ª,Å,«,Ü,·□B

□@□Ú,μ,·,í□ADISC1\BENCH\PFM_177H\README.1ST,đ,²—,.,³/₄,³,č□B

386 ^È~ ,ì x86 CPU ,đŽg,Á,½ PC ,ìŠO•"f,fŠ«"\,đ'è,·,évf fOf%of€
,Å,·Bf,fŠfo[fXfgfŠ[fhAf,fŠf%ofCfgAŠO•"fLffbfVf...
fŠ[fhAŠO•"fLffbfVf...f%ofCfg,ì«"\,đ'è,·,é,±,Æ,ª,Å,«,Ü,·B
U,μ,í,±,¿,ç,đ,²—,¾,³,ϕ
{button ,EF(` powinst.exe',` PFM_177H /V README.1ST',1) }@DISC1:\
BENCH\PFM_177H\README.1ST

DISC1:\BENCH\PFM_177H

{button ,EF(`powinst',`PFM_177H',1)} fC“fXfg[]f<,iŽÀ[]s

Performance meter for Intel 686 ver 2.1A

ftf@fCf<,lfRfs[]

%oæ-ÊfCf[][]fW

```
C:\TEMP>pfm686
-- pfm686 ver2.0 DysanKeihin & (koji) --
-----
|CPU: P54C [GenuineIntel Fam5 Mdl2 Stp12]|
|-----|
| 133.27[MHz] | [ns/dword] |[CPUclocks]|
|-----|
| E-cache read | 12.106 | 1.613 |
| E-cache write | 44.904 | 5.984 |
| main read | 30.674 | 4.088 |
| main write | 45.183 | 6.022 |
|-----|
```

Žú~^ftfHf<f_

DISC1:\BENCH\PFM68621

[]\$[]

[]i,±,[]jŽ[]A'æŽO<ž•lŽ[]

“à—e

Pentium^È~ ,ìCPU,đŽg,Á,½ PC ,ìŠO•”f f,fŠfAfNfZfX’-“x,đ’a’è,·,éfvf fOf%of€ ,Á,·B

ADISC1:\BENCH\PFM68621\PFM686.DOC,đ,²—,·¾,³,čB

Pentium^È~ ,ìCPU,đŽg,Á,½ PC ,ìŠO•"f f,fŠfAfNfZfX' -"x,đ'è',·,éfvf fOf%of€
,Å,·B
Ú,μ,,í,±,¿,ç,đ,²—, ,¾,³,¢
{button ,EF(`powinst.exe',`PFM68621 /V PFM686.DOC',1) }@DISC1:
BENCH\PFM68621\PFM686.DOC

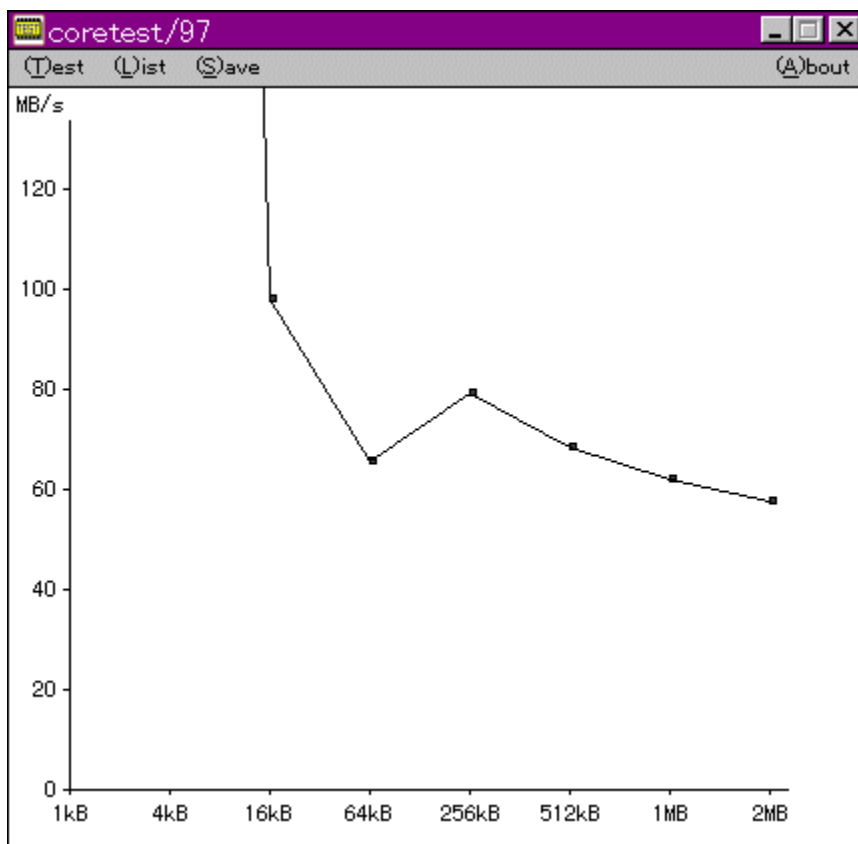
DISC1:\BENCH\PFM68621

{button ,EF(`powinst',`PFM68621',1)} ftf@fc.k.fRfs

CoreTest/97 1.01

CoreTest/97

CoreTest/97



CoreTest/97

DISC1:\BENCH\CTEST97B

§

'O" c<X<> Ž

“à—e

f}fVf“,lf,fŠfAfNfZfXfXfs[fh,đ‘à’è,·,éfvf[]fOf%of€,Å,·BÆv‘a•”,ÉVxDi
%o¼‘zfffofCfXfhf%ofCfoj,đŽg—p,μAPentium,İrdtsc-½—
ß,đŽg,Á,Ā³Šm,ÉŽžŠÓ‘à’è,đs,É,Á,Á,ç,Û,·B

@Ú,μ,íADISC1:\BENCH\CTEST97B\README.TXT,đ,²—,¾,³,çB

f}}fVf“ ,lf[]f,fŠfAfNfZfXfXfs[]fh,đ‘a’è,.,éfvf[]fOf%of€,Å,·[]BCEv‘a•” ,ÉVxD[]i
%o¼‘zfffofCfXfhf%ofCfo[]j,đŽg—p,μ[]APentium,lrđtsc-½—
ß,đŽg,Ä,Ä³Šm,ÈŽžŠÔ‘a’è,đ[]s,È,Ä,Ä,ç,Ü,·[]B
[]Ú,μ,,Í,±,¿,ç,đ,²—,³/4,³,ç
{button ,EF(` powinst.exe', `CTEST97B /V README.TXT',1) }[]@DISC1:\
BENCH\CTEST97B\README.TXT

DISC1:\BENCH\CTEST97B

{button ,EF(`powinst',`CTEST97B',1)} fC“fXfg[]f<,iŽÀ[]s

VTBENCH DOS/V Text Video Benchmark Ver. 1.2

fCf“fXfg□[f<,iŽA□s

%oæ-ÊfCf□□[fW

The screenshot displays the VTbench V-TEXT Benchmark results. It compares two modes: Direct and BIOS. The Direct mode shows significantly higher performance in terms of text output, scrolling, and overall score compared to the BIOS mode. A disclaimer box is present, stating that the results are for reference only and that the user is responsible for the results. It also indicates that pressing [F] will output the results to a file and other keys will end the program.

Scroll	BIOS	VTBENCH 1.2	Scroll	BIOS	T.Kitamura
1	獵リ	獵リ	1	獵リ	獵リ
2	獵リ	獵リ	2	獵リ	獵リ
3	獵リ	獵リ			獵リ
4	獵リ	獵リ			獵リ
5	獵リ	獵リ			獵リ
6	獵リ	獵リ			獵リ
7	獵リ	獵リ			獵リ
8	獵リ				
9	獵リ				
10	獵リ				
11	獵リ				
12	獵リ				
13	獵リ				
14	獵リ				
15	獵リ				
16	獵リ				
17	獵リ				
18	獵リ				
19	獵リ		19	獵リ	
20	獵リ		20	獵リ	
21	獵リ		21	獵リ	
22	獵リ		22	獵リ	
23	獵リ		23	獵リ	

VTBENCH V-TEXT Benchmark by T.Kitamura
ビテ`ホト` 03h 80字*25行 640*480
表示フォント 半角:8*19 全角:16*19

	Direct	BIOS
文字出力	189272字/秒	113563字/秒
スクロール	2228行/秒	19495行/秒
独断偏見評価	21084点	110695点

この結果は「参考」程度にしてください
結果については責任を負えません(^_^;)
[F]で結果をファイルに出力します。
その他のキーで終了 []

Žú~^ftfHf<f_

DISC1:\BENCH\VBENCH12

□\$□ì

-k'°•q•F Ž□
<http://www.cadin.or.jp/users/baxsoft/>

“à—e

DOS/V, ìfēfLfXfg%œ-ÊŠÖŒW, ìfXfs□[fh, ðŒv'ª, ·, éfvf□fOf%œf€, Å, ·□BŠeŽí, ìfhf
%œfCfo, ðŽg—p, μ, ½, Æ, «, É, Ç, Ì, ç, ç, ì%œ-Ê, Û, í, è, ìfXfs□[fh,ª□o, Å, ç
, é, ©, ð'Š'î"l, ÉŒv'ª, μ, Û, ·□B•¶Žš•\Ž!□AfXfNf□□[f<, Æ, à, ÉfrfflBIOS, Æ
%œ¼'zVRAM'¼□Ú□', «□ž, Ý, Ì—¼•û, ÅŒv'ª, Å, «, Û, ·□B

□@□Ú.μ.í□ADISC1:\BENCH\VBENCH12\VTBENCH.DOC, ð,²—.,¼,³, ç□B

DOS/V,lfefLfxfg%œ-ÊŠÖEW,lfXfs[h,ðEv^a,·,évf[fOf%€,Å,·BŠeŽí,lfhf
%fCfo,ðŽg—p,μ,½,Æ,«,É,Ç,ì,,ç,ç,ì%œ-Ê,Ü,í,è,lfXfs[h,^ao,Ä,ç
,é,©,đ,Š,Î“l,ÉEv^a,μ,Ü,·B•¶Žš•Ž;AfXfNf[f<,Æ,à,ÉfrfffBIOS,Æ
%¼‘zVRAM’¼Ú‘,«ž,Ý,ì—¼•û,ÅEv^a,Å,«,Ü,·B
Ú,μ,,í,±,¿,ç,đ,²—,,³/₄,³,ç
{button ,EF(`powinst.exe',`VBENCH12 /V
VTBENCH.DOC',1) }@DISC1:\BENCH\VBENCH12\VTBENCH.DOC

DISC1:\BENCH\BENCH12

{button ,EF(`powinst', `VBENCH12',1)} fCf“fXfg□[f<,iŽÀ□s

WHATIDE

fCf“fXfg□[f<,iŽÀ□s

Žû~^ftfHf<f_

DISC1:\BENCH\WHATIDE

□\$□ì

Tom Warren Ž□

“à—e

DOS□ă,ÅIDE,ìfn□[fhfffBfXfN,ì□î•ñ,đ•\Ž!,·,éfvf□fOf%of€
,Å,·□BfvfŠf“f_□[□”□Afwfbfh□”□A1fgf%ofbfN, ,½,è,ìfZfNf^□”□AfZfNf^fofbftf@fTfCfY□A
1%oň,ìŠ,,,è□ž,Ý,É,“,̄,éfZfNf^□”(fuf□fbfNf,□[fh),ÆECCfofCfg□”,đ•\Ž!,μ,Ü,·□B

□@□Ú,μ,í□ADISC1:\BENCH\WHATIDE\WHATIDE.DOC,đ,²—,.,¾,³,ć□B

DOS ě, ÅIDE, ifn [fhfffBfXfN, i ě•ñ, đ•\Ž|, , éfvf [fOf%of€
, Å, ·BfVfŠf“f_ [[“ Afwfbfh [“ A1fgf%ofbfN, , ½, è, lfZfNf^ [“ AfZfNf^fofbftf@fTf
CfY A1%oñ, ĩŠ,, èž, Ý, É, ¨, , éfZfNf^ [“ (fuf [fbfNf, [fh), ÆECCfofCfG [“, đ•\
Ž|, μ, Ü, ·B
[U, μ, , í, ±, ç, đ, ²—, , ¾, ³, ¢
 {button ,EF(`..\MENUDATA\IMPVIEW.EXE', `WHATIDE\
WHATIDE.DOC',1) } [@DISC1:\BENCH\WHATIDE\WHATIDE.DOC

DISC1:\BENCH\WHATIDE

{button ,EF(`powinst', `WHATIDE',1)} fC“fXfg[]f<,iŽÀ[]s

fm [fg,o,b—pfofbfefŠfefXfgfvf fOf%of€ Revision 0.21

ftf@fCf<,lfRfs [

%oæ-ÊfCf [fW

```
testbat.exe - test battery performance version 0.21  
Copyright (c) 1994, 1995 Pierre. (Kazuhiro Inoue), All rights reserved.
```

```
Now ready to execute battery test.  
Please disconnect external power supply.  
BatteryPerformance test is started!
```

```
0      03:41:38      99  
1      03:42:38      97  
2      03:43:38      95  
3      03:44:38      93  
4      03:45:38      90  
5      03:46:38      88  
6      03:47:38      86  
7      03:48:38      84  
8      03:49:38      82  
03:50:25
```

Žû~^ftfHf<f_

DISC1:\BENCH\TESTBAT

[\$i

^ä"Vã ~aOŽ

“à—e

fm[fjgfpf\frf",\fofbfefšž'±žžšô,đ'â'è,·éxf"f`f}[]fNfvf[]fOf%of€,Å,·B

@ú,μ,íADISC1:\BENCH\TESTBAT\TESTBAT.DOC,đ,²—, ,³/₄,³,çB

fm [fgfp]fRf", ifofbfefŠŽ ±ŽžŠÔ,đ'è,·,éxf"f`f} [fNfvf]fOf%of€,Å,·B
Ú,μ,,l,±,ç,đ,²—,,³/₄,³,φ
{button ,EF(`powinst.exe', `TESTBAT /V TESTBAT.DOC',1) } @DISC1:\
BENCH\TESTBAT\TESTBAT.DOC

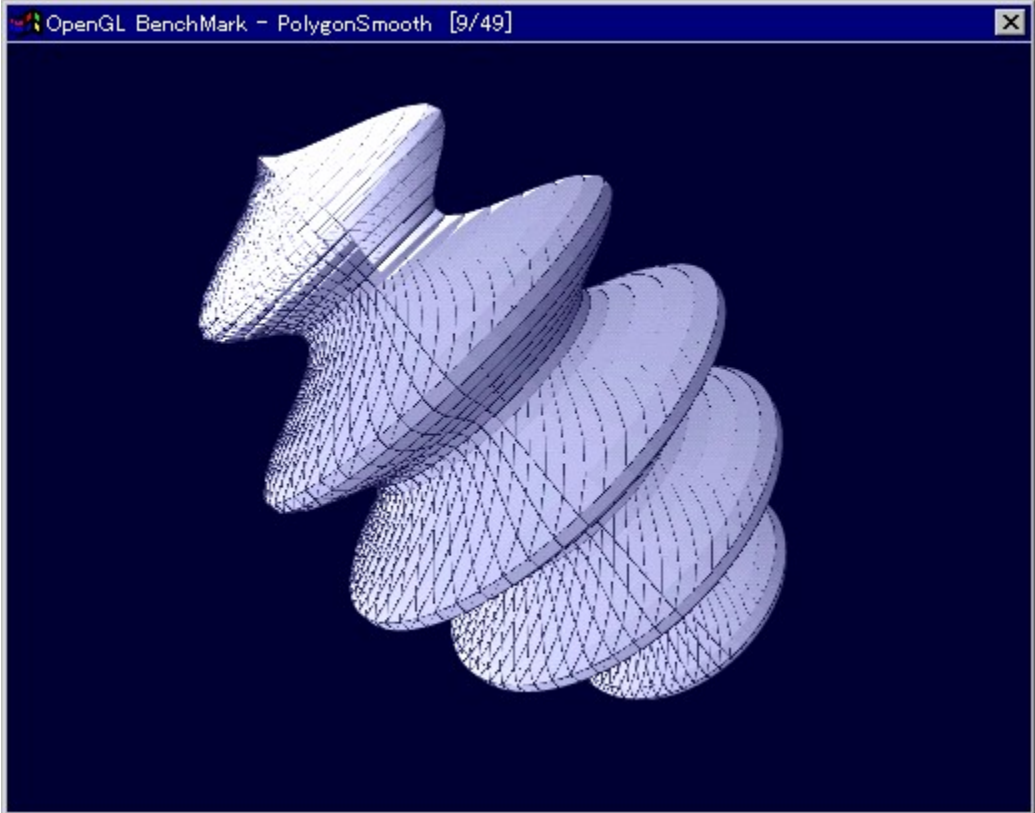
DISC1:\BENCH\TESTBAT

{button ,EF(`powinst', `TESTBAT',1)} ftf@fCf<,jRfs[]

OpenGL Benchmark

fCf“fXfg□[f<,iŽÀ□s

%oæ-ÊfCf□□[fW



Žû~^ftfHf<f_

DISC1:\BENCH\OGLB151I

Ⓢ

Yoccy
<http://www.bekkoame.or.jp/~yoccy/index.html>

“à—e

OpenGL, ì•`%æ«”\, ð‘à’è, ·, é, ½, ß, ìfvf[]fOf%of€, Å, ·B

@Ú, μ, íADISC1:\BENCH\OGLB151\README_J.TXT, ð, ²—, ¾, ³, çB

OpenGL, ì • ` % œ « " \, ð ' à ' è , . , é , ½ , ß , ì f v f ò f O f % o f € , Å , • □ B

□ U , μ , , Í , ± , ç , ð , ² — — , , ¾ , ³ , ç

{ button , EF (` powinst.exe ' , ` OGLB151I / V README_J.TXT ' , 1) } □ @ DISC1 : \
BENCH\OGLB151\README_J.TXT

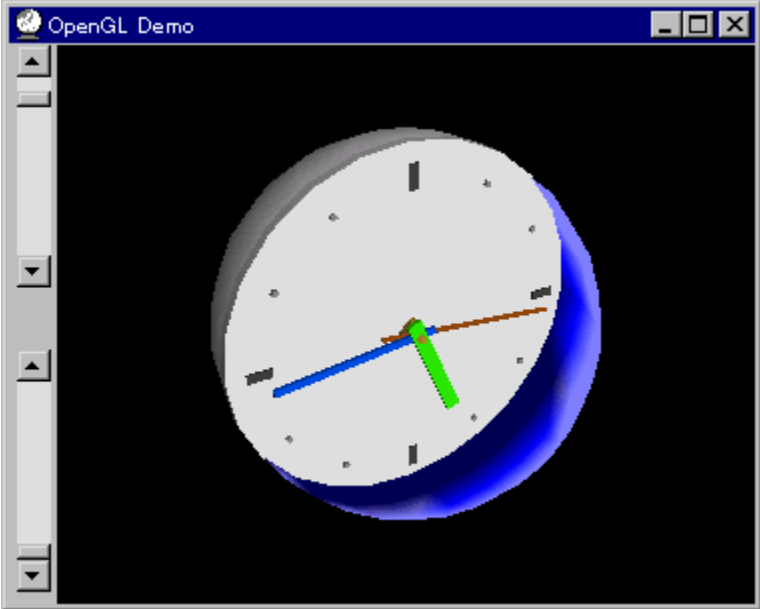
DISC1:\BENCH\OGLB151I

{button ,EF(`powinst',`OGLB151',1)} fCf“fXfg□[f<,iŽÀ□s

OpenGL xYÀ²Ñ

fCf“fXfg□[f<,iŽÀ□s

%oæ-ÊfCf□□[fW



Žû~^ftfHf<f_

DISC1:\BENCH\OPENGL11



□\$□ì

Œ''~□ìŒ ŽÒ Silicon Graphics, Inc. "]□Ú□Afff,□ì□~ ,ä,ç Ž□



“à—e

OpenGL Benchmark, È, Ç, A OpenGL 'î%ž, ìftfg, ì“ ®, È•K—v, Èf%of“f^fCf€f%ofCfuf
%ofŠ, Æ, A, » , ê, ðŽg, Á, ½fff, fvf[]fOf%of€, Å, ·[]BfCf“fXfg[]f<, ·, é, ±
, Æ, É, æ, è[]ADLL, ðVfXfefeftfHf<f_ , ÉfRfs[][, ·, è, Ü, ·[]B

**OpenGL, í[]A Windows NT 4.0 , ”, æ, Ñfo[]fWf†f“4.00.950B^È[]~, ìWindows
95[]i, ç, í, à, éOSR2[]j[]A Windows 98, É, í•W[]€, ÅfCf“fXfg[]f<, ·, è, Ä, ç
, Ü, ·[]Bfo[]fWf†f“4.00.950a^È‘O, ìWindows 95, ð, “Žg, ç
, ìê[]†, ì, Ý[]AfCf“fXfg[]f<, ð[]s, È, Ä, Ä, , ¾, ·, ç[]B, “Žg, ç
, ìWindows, ìfo[]fWf†f“, ì[]AfRf“fgf[][]f<fpjlf<, ìVfXfefe
, ìfvf[]fpfefB, ÅŠm”F, ·, é, ±, Æ, ð, Ä, «, Ü, ·[]B**

OpenGL Benchmark, È, Ç, A OpenGL 'Í%ž, ðftfg, Ì" ® Ì, É•K—v, Èf%of“f^fCf€f
%ofCfuf%ofŠ, Æ, A, » , è, ðŽg, Á, ½fff, fvf fOf%of€, Å, · BfCf“fXfg [f<, ·, é, ±
, Æ, É, æ, è ADLL, ðVfXfef€ftfHf<f_ , ÉfRfs [, ³, è, Ü, · B

OpenGL, Í, A Windows NT 4.0

, ·, æ, Ñfo [fWf†f“4.00.950B^È~ , ÌWindows 95 i, ç
, í, ä, éOSR2 j A Windows 98, É, Í•W € , ÅfCf“fXfg [f<, ³, è, Ä, ç
, Ü, · Bfo [fWf†f“4.00.950a^È‘O, ÌWindows 95, ð, Žg, ç
, Ìê†, Ì, Ý AfCf“fXfg [f<, ðs, È, Á, Ä, , ¾, ³, ç B, Žg, ç
, ÌWindows, Ìfo [fWf†f“ , Í AfRf“fgf [f<fpfIf<, ÌVfXfef€
, Ìvf fpfefB, ÅŠm”F, ·, é, ±, Æ, ð, Å, «, Ü, · B

DISC1:\BENCH\OPENGL11

{button ,EF(`powinst',`OPENGL11',1)} fCf“fXfg[]f<,iŽÀ[]s

WinGfpftfH [f}f“fXfefXfg GTEST ver.1.2

fC“fXfg [f<,iŽÀ s

%œ-ÊfCf [fW



Žû^ftfHf<f_

DISC1:\BENCH\GT12G

§

,Ü,é, ,č Ž

“à—e

WinG,ìfpftfH[f]f“fX,đ‘a’è,·,éfvf[]fOf%of€,Á,·[]B—L-¼,Èfxf“f`f}[]fNfefXfg,Á, ,é3DBEN
CH,Æ“~,¶,æ,æ,ÈEXÆü,ì“’l,đ[]o,μ,Ú,·[]B

@[]Ú,μ,í[]ADISC1:\BENCH\GT12G\README.TXT,đ,²—, ,³/₄,³,č[]B

WinG,lfpfH[f}f“fX,đ'è',.évf[fOf%of€,Å,.B—L-¼,Èxf“f`f}[fNfefXfg,Å, ,é3
DBENCH,Æ“~,¶,æ,æ,ÈEXEü,ì“’l,đo,μ,Ü,.B
Ú,μ,,í,±,¿,ç,đ,²—,3/4,³,ç
{button ,EF(`powinst.exe', `GT12G \V README.TXT',1) }@DISC1:\
BENCH\GT12G\README.TXT

DISC1:\BENCH\GT12G

{button ,EF(`powinst',`GT12G',1)} fCf“fXfg[]f<,iŽÀ[]s

