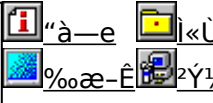


# fxf" f f} [fNfvf fOf%of€ 20- {

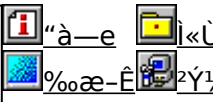
ŠeŽifxf" f f} [fN AfVfXfef€ î•ñ•\Ž!f\ftfgfEfFfA,Å,•B



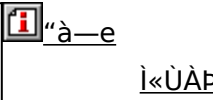
**.d,p,t,h,o,X,T @for @Win32 @V3.00 ³Ž @œšj" Å NEW!**  
 @ @ \$ @ Š ì ' ½ ~ T  
 @ @ @ @ @ <http://ring.aist.go.jp/openlab/kitaro/>  
 CPU AHDD Af f, fŠ AfVfXfef€, È, Ç APC, l, , ç, ä, é î•ñ, ì•\Ž! Afxf" f f} [fN, ð s, È, x f\ftfg, Å, •B



**Š"Ž @%oiŽĐf f<fR f f<fRxf" f f} [fN Ver1.30 UP!**  
 @ @ @ \$ @ Š " Ž @ % o i Ž Đ f f < f R  
 @ @ @ @ @ <http://www.melcoinc.co.jp/>  
 PC, l' @ @ # p f t f H [ f } f " f X, ð ' a ' è, , é v f [ f O f % o f €, Å, •B



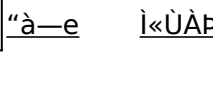
**PFM686 — p C%ü•İ CWSDPMI @ iDPMI server j,»,ì,R UP!**  
 @ @ @ \$ @ Ç ' @ f Charles W Sandmann @ % ü • İ f @ i, ±, ¶ j Ž @



PFM686 ver2.0 ^ È ~, ð " @ ì, ³, 1, é, ½, ß, È • K — v, È DPMI f T [ f o [ [ , Å, •B



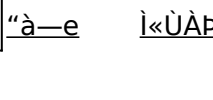
**Š"Ž @%oiŽĐ fAfC EfI [ E f f [ f ^ < @ Š í f AfvfŠxf" f**  
 @ @ @ \$ @ Š " Ž @ % o i Ž Đ f AfC EfI [ E f f [ f ^ < @ Š í  
 @ @ @ @ @ <http://www.iodata.co.jp/>



Windows 95 ä, Å Ž Ä Ü, È f AfvfŠ f P [ f V f # f " , ð Ž Ä s, µ, ½, Æ, «, l f V f X f e f € « " \, ð • ] % ö ÷, , é v f [ f O f % o f €, Å, •B



**Final Reality Ver1.01**  
 @ @ @ \$ @ R emedy Entertainment Ltd. & VNU European Labs  
 @ @ @ @ @ <http://www.remedy-ent.com/fr/>

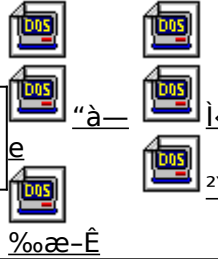


3D, l'`%æ«" \, ð' a' è, , éxf' f' f} [fNf\ftfg, Å, · B



**fíCvZZfvf fOf%œ f€ ufX [fp [fí Ver 1.1 v**

© H. Oda © 1995  
© H. Oda © 1995  
© H. Oda © 1995  
<http://www.cc.u-tokyo.ac.jp/>



%o~Zü—|ifíj, ðCvZZ, ³, ¹, ÅCPU, âfj, fš AHDD, È, Ç, í«" \, ðCv' a, , éf\ftfg, Å, · B



**WCPUID.EXE Version 1.6 for Win32**

© H. Oda © 1995  
© H. Oda © 1995  
<http://www2.tky.3web.ne.jp/~nrklv/>

Windows 95/NT 4.0, Å, ÅCPU, ifNfjfbfNžü" g" A, , æ, NMMXfefNfmfjWfTfj [fg, í—L-³, ð' a' è, , évfj fOf%œ f€, Å, · B



**HDBENCH(É° ÅpÅp ½, íPÝÁ) Ver 2.61**

© H. Oda © 1995  
© H. Oda © 1995  
<http://www.lares.dti.ne.jp/~ep82kazu/>

fN [fhfffBfXfN A · ` %æ ACPU, í' - , ³, ð' a' è, , évfj fOf%œ f€, Å, · B



**DDBENCH(DirectDraw íPÝÁ) Ver 1.41**

© H. Oda © 1995  
© H. Oda © 1995  
<http://www.lares.dti.ne.jp/~ep82kazu/>

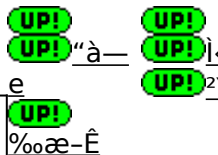
DirectDraw, l'` %æ' - " x, ð' a' è, , évfj fOf%œ f€, Å, · B



**fQ [f€ —pfOf%œ ftfBfbfNxf' f' f} [fNfefXfg GBENCH32 3.0**

© H. Oda © 1995  
© H. Oda © 1995  
© H. Oda © 1995

fOf%œ ftfBfbfN, í«" \, ð' a' è, , évfj fOf%œ f€, Å, · B





UP!

### PFM486 Ver.1.77H

© 1997 by Intel Corporation

386 ^E~., l x86 CPU , dZg, A, 1/2 PC , ISO " f f f S « "\ , d ' a ' e , . , e f v f f O f % o f € , Å , . B



UP! "à—



%œ-Ê



UP! i«Ù



zY1



UP!

### Performance meter for Intel 686 ver 2.1A

© 1997 by Intel Corporation

Pentium ^E~., l CPU, dZg, A, 1/2 PC , ISO " f f f f S f A f N f z f X ' - " x , d ' a ' e , . , e f v f f O f % o f € , Å , . B



UP! "à—



%œ-Ê



UP! i«Ù



zY1



UP!

### CORETEST/97 1.01

© 1997 by Intel Corporation

f} fVf" , l f f f f S f A f N f z f X f X f s [ f h , d ' a ' e , . , e f v f f O f % o f € , Å , . B



"à—e



%œ-Ê



i«Ù



zY1



### VTBENCH DOS/V Text Video Benchmark Ver. 1.2

© 1997 by Intel Corporation

© 1997 by Intel Corporation <http://www.cadin.or.jp/users/baxsoft/>

DOS/V , l f e f L f X f g % œ - Ê S Ö C E W , l f X f s [ f h , d C e v ' a , . , e f v f f O f % o f € , Å , . B



"à—e



%œ-Ê



i«Ù



zY1



### WHATIDE

© 1997 by Intel Corporation

DOS ä , Å I D E , l f n [ f h f f f B f X f N , l i î • ñ , d • \ Z ! , . , e f v f f O f % o f € , Å , . B



"à—e



%œ-Ê



i«Ù



zY1



### Diskdrive benchmark on Win32 1.12

© 1997 by Intel Corporation

© 1997 by Intel Corporation <http://www.incom.ne.jp/~tsukada/>

Win32 S Å « i Windows 95 / NT 4.0 / NT 3.51 j % o ° , É , , , , é A f S f € [ f o f u f < f f f f B f A , d , Ö , . p f f f B f X f N f h f % o f C f u , l f p f t f H [ f } f " f X , d ' a ' e , . , e f v f f O f % o f € , Å , . B



"à—e



%œ-Ê



i«Ù



zY1



### fm [fg.o.b—pfobfefSfefXfgfvf fOf%œ-Ê Revision 0.21

© 1997 by Intel Corporation

fm [ f g p f v R f " , l f o b f e f S Z [ ' ± Z Z S Ö , d ' a ' e , . , e f x f " f } [ f n f v f f O f % o f € , Å , . B



"à—e



%œ-Ê



i«Ù



zY1



### OpenGL Benchmark

© 1997 by Intel Corporation



"à—e



%œ-Ê



i«Ù

http://www.bekkoame.or.jp/~yoccy/index.html

OpenGL, i` %æ « "\, ð 'a' è, ., é, ½, ß, lfvf fOf %f€, Å, . B



### OpenGL xYA²Ñ

OpenGL Benchmark, È, Ç AOpenGL' î%ž, lf\ftfg, l" © ì, É • K—v, Èf %of "f^fCf€f %of Cfuf %of Š, A€ A, » , è, ð Žg, Á, ½ fff, f %of €, Å, . B



"à—e i«Ü

%æ-Ê zÝ½



### WinGfpftH [f} f" fXfefXfg GTEST ver.1.2

WinG, lf pftH [f} f" fX, ð 'a' è, ., é, v f fOf %f€, Å, . B



"à—e i«Ü

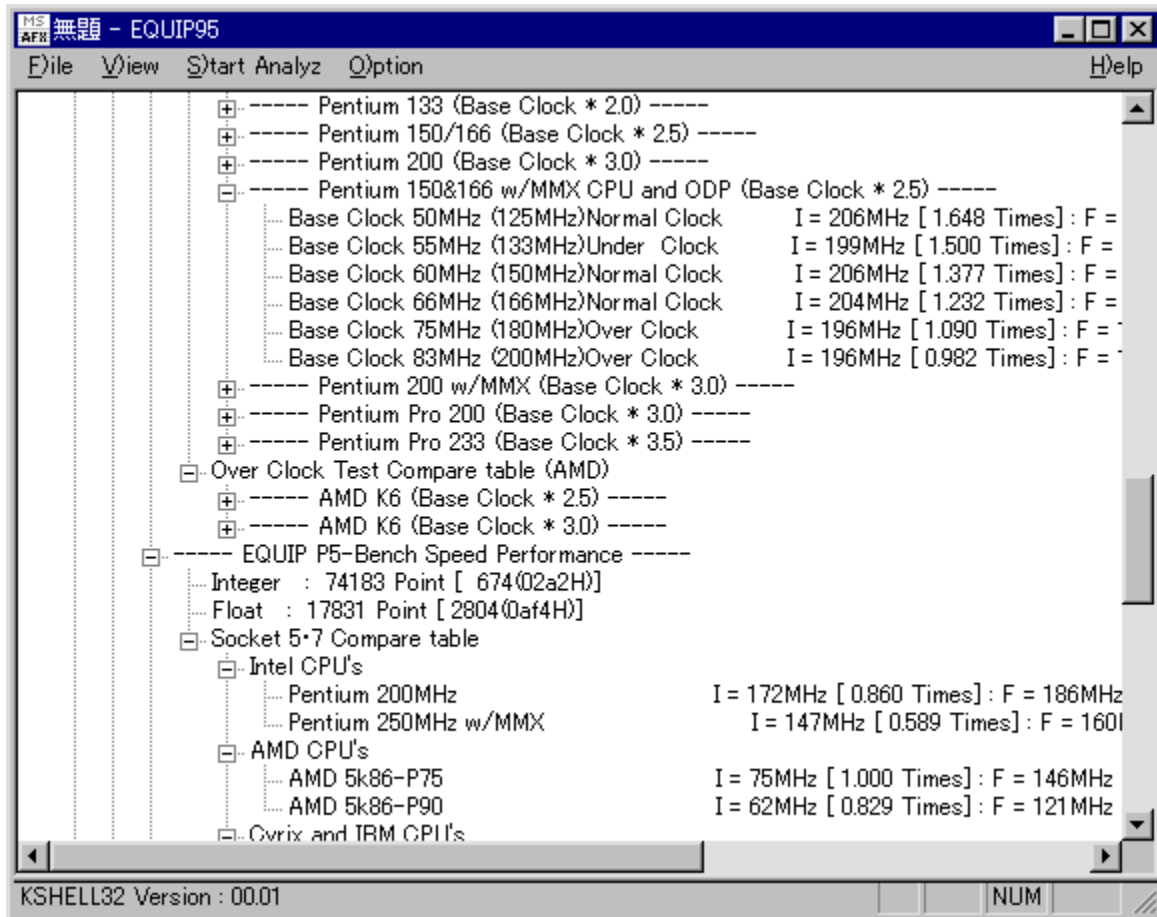
%æ-Ê zÝ½



 ,d,p,t,h,o,X,T @for @Win32 @V3.00 ³Ž®ÆöŠ”Å

 COPY ftf@fCf<.lfRfs

 %œ-ÊfCf [fw



MS-AFBI 無題 - EQUIP95

File View Start Analyz Option Help

- Pentium 133 (Base Clock \* 2.0) -----
- Pentium 150/166 (Base Clock \* 2.5) -----
- Pentium 200 (Base Clock \* 3.0) -----
- Pentium 150&166 w/MMX CPU and ODP (Base Clock \* 2.5) -----
  - Base Clock 50MHz (125MHz)Normal Clock I = 206MHz [ 1.648 Times] : F =
  - Base Clock 55MHz (133MHz)Under Clock I = 199MHz [ 1.500 Times] : F =
  - Base Clock 60MHz (150MHz)Normal Clock I = 206MHz [ 1.377 Times] : F =
  - Base Clock 66MHz (166MHz)Normal Clock I = 204MHz [ 1.232 Times] : F =
  - Base Clock 75MHz (180MHz)Over Clock I = 196MHz [ 1.090 Times] : F =
  - Base Clock 83MHz (200MHz)Over Clock I = 196MHz [ 0.982 Times] : F =
- Pentium 200 w/MMX (Base Clock \* 3.0) -----
- Pentium Pro 200 (Base Clock \* 3.0) -----
- Pentium Pro 233 (Base Clock \* 3.5) -----
- Over Clock Test Compare table (AMD) -----
  - AMD K6 (Base Clock \* 2.5) -----
  - AMD K6 (Base Clock \* 3.0) -----
- EQUIP P5-Bench Speed Performance -----
  - Integer : 74183 Point [ 674(02a2H)]
  - Float : 17831 Point [ 2804(0af4H)]
- Socket 5-7 Compare table -----
  - Intel CPU's -----
    - Pentium 200MHz I = 172MHz [ 0.860 Times] : F = 186MHz
    - Pentium 250MHz w/MMX I = 147MHz [ 0.589 Times] : F = 160I
  - AMD CPU's -----
    - AMD 5k86-P75 I = 75MHz [ 1.000 Times] : F = 146MHz
    - AMD 5k86-P90 I = 62MHz [ 0.829 Times] : F = 121MHz
  - Cyrix and IBM CPU's -----

KSHELL32 Version : 00.01 NUM

 Zû~^ftfHf<f\_

DISC1:\BENCH\EQ95300

 S i

Šì½T  
<http://ring.aist.go.jp/openlab/kitaro/>

---



“à—e

CPU AHDD Af fš AfVfXfef€ È Ç APC ì , ç ä é î ñ ï Ž Afxf “f`f} [fN, ð s, È, xfl  
ftfg, Å, · B

fvf%o fOfCf“, ðžg, Á, Äftf@fCf<fRfs [ , ·, é Û AfRfs [ [æ, ÉŽw'è, μ, ½ftfHf<f\_ ì  
%oº, É uEquip95 v, Æ, ç, xftfHf<f\_ , ð ì - , ³, ê, ÄfRfs [ , ³, ê, Û, · B



@ Û, μ, í AREADME.JPN, ð, ² —, , ¾, ³, ç B

MS AFM 無題 - EQUIP95

File View Start Analyz Option Help

- [-] ----- Pentium 133 (Base Clock \* 2.0) -----
- [-] ----- Pentium 150/166 (Base Clock \* 2.5) -----
- [-] ----- Pentium 200 (Base Clock \* 3.0) -----
- [-] ----- Pentium 150&166 w/MMX CPU and ODP (Base Clock \* 2.5) -----
  - Base Clock 50MHz (125MHz)Normal Clock I = 206MHz [ 1.648 Times] : F =
  - Base Clock 55MHz (133MHz)Under Clock I = 199MHz [ 1.500 Times] : F =
  - Base Clock 60MHz (150MHz)Normal Clock I = 206MHz [ 1.377 Times] : F =
  - Base Clock 66MHz (166MHz)Normal Clock I = 204MHz [ 1.232 Times] : F =
  - Base Clock 75MHz (180MHz)Over Clock I = 196MHz [ 1.090 Times] : F =
  - Base Clock 83MHz (200MHz)Over Clock I = 196MHz [ 0.982 Times] : F =
- [-] ----- Pentium 200 w/MMX (Base Clock \* 3.0) -----
- [-] ----- Pentium Pro 200 (Base Clock \* 3.0) -----
- [-] ----- Pentium Pro 233 (Base Clock \* 3.5) -----
- [-] Over Clock Test Compare table (AMD)
  - [-] ----- AMD K6 (Base Clock \* 2.5) -----
  - [-] ----- AMD K6 (Base Clock \* 3.0) -----
- [-] ----- EQUIP P5-Bench Speed Performance -----
  - Integer : 74183 Point [ 674(02a2H)]
  - Float : 17831 Point [ 2804(0af4H)]
- [-] Socket 5-7 Compare table
  - [-] Intel CPU's
    - Pentium 200MHz I = 172MHz [ 0.860 Times] : F = 186MHz
    - Pentium 250MHz w/MMX I = 147MHz [ 0.589 Times] : F = 160I
  - [-] AMD CPU's
    - AMD 5k86-P75 I = 75MHz [ 1.000 Times] : F = 146MHz
    - AMD 5k86-P90 I = 62MHz [ 0.829 Times] : F = 121MHz
  - [-] Cvrrix and IBM CPU's

KSHELL32 Version : 00.01

NUM



CPU AHDD Af fš AfvfXfef€ , È , Ç APC , ì , ç , ä , é î ñ , ì \  
Ž ! Afxf " f ` f } [ fN , ð s , È , f\ftfg , Å , · B

**fvf**

%o fOfCf " , ð Ž g , Á , Äftf @fCf <fRfs [ , · , é Ű AfRfs [ [ æ , É Ž w ' è , μ , ½ ftfHf <f \_ , ì

%o ° , É uEquip95 v , Æ , ç , ftfHf <f \_ , ð ì ¬ , ³ , è , ÄfRfs [ , ³ , ê , Ü , · B

Ú , μ , í , ± , ç , ð , ² — — , ¾ , ³ , ç

{ button , EF ( ` powinst.exe ' , ` EQ95300 /V README.JPN ' , 1 ) } @README.JPN

DISC1:\BENCH\EQ95300

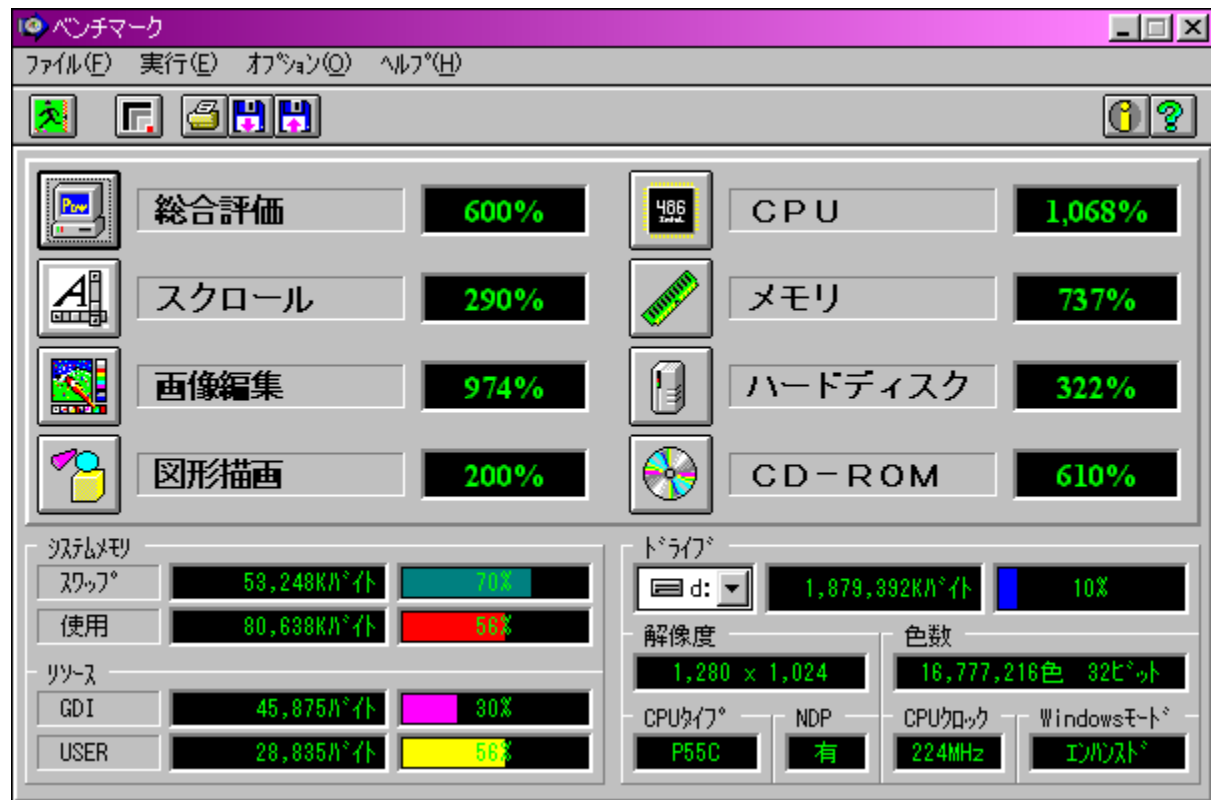
{button ,EF(`powinst',`EQ95300',1)} ftf@fCf<,lfRfs□□



# ベンチマーク Ver1.30

**COPY** 実行

情報  
%æ-ÊfCf[]fW



情報  
Zû~^ftfHf<f\_

DISC1:\BENCH\MELCO

顔文字  
[]\$[]

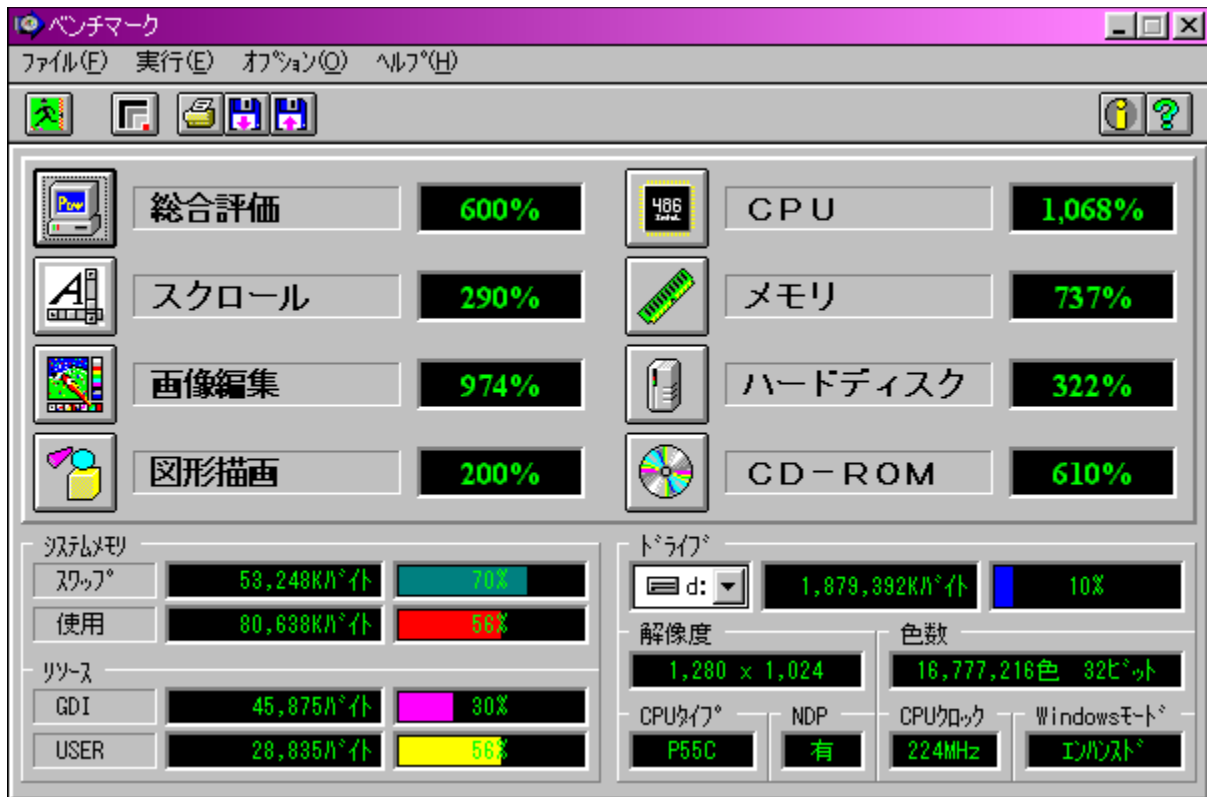
Š”Ž®%œiŽĐf[]f<fR  
<http://www.melcoinc.co.jp/>



“à—e

PC, l' f p p f t f H [ f } f " f X, ð ' a ' è, : , é f v f [ f O f % o f € , Å , · B Word Pad, ð Ž g —  
p, μ, ½ f X f N f [ f < [ f y f C f " f g, Å, l' % o o æ ' œ • ` Ž Ê, â [ A C P U [ A f [ f, f Š [ A f n [ [ f h f f f B f X f N [ A C D -  
ROM, l' « " \, ð ' a ' è, : , é, ±, Æ, ª, Å, «, Û, · B

“K“ -, È f t f H f < f \_ , É f R f s [ l, μ, ½ C E ã [ A S e t u p . e x e, ð Ž À [ s, μ, Å, , ¾, ³, ç [ B



PC, ì' [ ] # f p f t f H [ ] { } f " f X, ð ' ã ' è, ., é f v f [ ] f O f % o f € , Å, . [ ] B Word Pad, ð Ž g —  
p, μ, ½ f X f N f [ ] [ ] f < [ ] A f y f C f " f g, Å, ì  
% o æ ' œ • ` Ž Ê, â [ ] A C P U [ ] A f [ ] f, f Š [ ] A f n [ ] [ ] f h f f f B f X f N [ ] A C D - R O M, ì [ ] « " \, ð ' ã ' è, ., é, ±  
, Æ, ã, Å, «, Ü, . [ ] B

**"K" -, È f t f H f < f \_ , É f R f s [ ] [ ] , μ, ½ Ć ã [ ] A S e t u p . e x e , ð Ž À [ ] s , μ, Å, , ¾, ³, ç [ ] B**




DISC1:\BENCH\MELCO

{button ,EF(`powinst',`MELCO',1)} ftf@fCf<,lfRfs



 PFM686 —p C%ü•ï CWSDPMI @iDPMI server j,» ,ì,R

 ftf@fCf<.lfRfs

 Zù~^ftfHf<f\_

DISC1:\BENCH\CWSDPMI2

---

 \$ì

Æ´i Charles W Sandmann @%ü•ï F i,±,¶jž

---

 “à—e

PFM686 ver2.0^È~ ,đ“ ®i,³,¹,é,½,β,É•K—v,ÈDPMI fT [fo [ ,Å,·B

 @Ú,µ,Í ADISC1:\BENCH\CWSDPMI2\README.TXT,đ,²—, ,¾,³,çB

PFM686 ver2.0^È~ ,đ“ ® ì, <sup>3</sup>, <sup>1</sup>, é, <sup>1</sup>/<sub>2</sub>, ß, É•K—v, ÈDPMI fT [fo [ [ , Å, · B  
Ú, μ, , Í, ±, ç, ð, <sup>2</sup>— —, , <sup>3</sup>/<sub>4</sub>, <sup>3</sup>, ç  
{button ,EF(`powinst.exe', `CWSDPMI2 /V README.TXT',1) } @DISC1:\  
BENCH\CWSDPMI2\README.TXT

DISC1:\BENCH\CWSDPMI2

{button ,EF(`powinst',`CWSDPMI2',1)} ftf@fCf<,lfRfs[





Š”Ž®%iŽĐ fAfC Efi Eff f^<@Ší fAfvfŠfxf“f`

INSTALL fCf“fXfg f<,iŽÀs

‰œ-ÊfCf fW



Zú~^ftfHf<f\_

DISC1:\BENCH\WKAPB

Š”Ž®%iŽĐ fAfC Efi Eff f^<@Ší

<http://www.iodata.co.jp/>

“à—e

Windows 95 ĀŽÀŪ, ÉfAfvfŠfP fVf#“ ,đŽÀs, μ, ½, Æ, «, lfVfXfef€<“\,đ•]‰

ž, ·, éfvf[]fOf%of€, Å, ·[]BfAfvfŠfP[][fVf#f", ðŽg—p, μ, Åfxf" f` f}[][fN, ðŽæ, é, ½, ß[]Af` f...  
[][fjf" fO, ð[]s, È, æ[]ê[]#, ÉŽÅ[]Ú, ðŽg—  
pŽž, È, Ç, è, ¾, - "x, aCEü[]ã, ·, é, ð, ©, a[]A" äŠr" l•a, ©, è, â, ·, ,, È, Á, Ä, ç, Ü, ·[]B  
'a' è[]€-Ú[]F" d'ì, Åfxf" f` f}[][fN[]Af[]f, ' , Åfxf" f` f}[][fN[]AfyfCf" fg, Åfxf" f` f}[][fN



Windows 95 ě, ÅŽÀÛ, ÉfAfvfŠfP[fVf†f“, ðŽÀs, μ, ½, Æ, «, ìfVfXfef€«”\, ð•]‰  
¿, ·, éfvfOf%of€, Å, ·BfAfvfŠfP[fVf†f“, ðŽg—  
p, μ, Åfxf“f`f} [fN, ðŽæ, é, ½, ßAf`f... [fjf“fO, ðs, È, xê†, ÉŽÀÛ, ìŽg—  
pŽŽ, É, Ç, ê, ¾, ¯´“x, Æüã, ·, é, ì, ©, ÆA”äŠr“l•ª, ©, è, â, ·, , É, Á, Ä, †, Ü, ·B  
‘ª’è€-ÚF“d’ì, Åfxf“f`f} [fN Af, , Åfxf“f`f} [fN AfyfC“fg, Åfxf“f`f} [fN

DISC1:\BENCH\WKAPB

{button ,EF(`powinst', `WKAPB',1)} fCf"fxfg[]f<,iŽÀ[]s



# Final Reality Ver1.01

 **INSTALL** fCf“fXfg[]f<,iŽÀ[]s

 %œ-ÊfCf[]fW



 Zû~^ftfHf<f\_

DISC1:\BENCH\FR101

---

 \$i

Remedy Entertainment Ltd. & VNU European Labs  
<http://www.remedy-ent.com/fr/>

---

 “à—e

3D,i•`%œ[]«”\,đ’â’è,·,éfxf“f`f}[]fNfjftfg,Å,·[]B  
DirectX,Å,ì•`%œ[]«”\,ì,Û,©[]AAGPfofX,ì”]’—fÆ[]fgr,à’â’è,Å,«,Û,·[]B







3D, ì·`%œ«" \, ð'è, ·, éxf" f } [fNf\ftfg, Å, ·B  
DirectX, Å, ì·`%œ«" \, ì, Ù, ©AAGPofX, ì" ]'—fE [fg, à'è, Å, «, Ù, ·B

DISC1:\BENCH\FR101

{button ,EF(`powinst', `FR101',1)} fC“fXfg[]f<,iŽÀ[]s



Super π Ver 1.1

Super π

Super π



Super π

DISC1:\BENCH\SUPERPAI

Super π

Super π  
<http://www.cc.u-tokyo.ac.jp/>

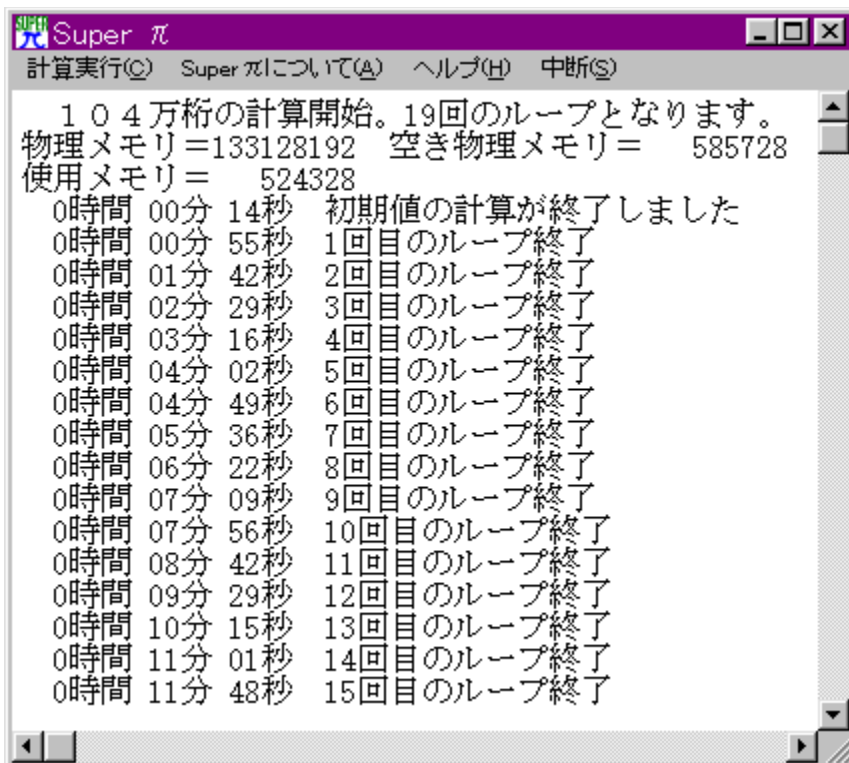


“à—e

%~Žü—|ifj,đĀvŽZ,<sup>3,1</sup>ÄCPU,âff,fšAHDD,È,Ç,ì«”\,đĀv’<sup>â</sup>,·,é\ftfg,Å,·B  
-“”\_ ^È%<sup>o</sup>1-œ6çĀĀ..., ©,ç3,355-œĀĀ...,Û,ÄĀvŽZ,<sup>3,1</sup>é,±,Æ,<sup>â</sup>Ä,«,Û,·B

**fvf%ofOfCf“ ,đŽg,Á,Äftf@fCf·fRfs[l,·,éÛAfRfs[læ,ÉŽw’è,μ,½ftfHf<f\_ì  
%<sup>o</sup>,ÉuSuper\_pi v,Æ,ç,æftfHf<f\_<sup>â</sup>ì-<sup>3</sup>,é,ÄfRfs[l,<sup>3</sup>,é,Û,·B**





%~Žü—!ifj,đĀvŽZ,<sup>3,1</sup>,ÄCPU,âf,fšAHDD,È,Ç,ì«”\,đĀv’<sup>a</sup>,·,éftfg,Å,·B  
¬””\_ ^È%<sup>o</sup>1-æ6çĀ...,©,ç3,355-æĀ...,Û,ÅĀvŽZ,<sup>3,1</sup>,é,±,Æ,<sup>a</sup>,Å,«,Û,·B

**fvf**

%fOfCf“,đŽg,Á,Äftf@fCf<fRfs[·,éÛAfRfs[æ,ÉŽw’è,μ,½ftfHf<f\_,ì  
%<sup>o</sup>,ÉuSuper\_pi v,Æ,ç,¼ftfHf<f\_,<sup>a</sup>ì¬,<sup>3</sup>,ê,ÄfRfs[<sup>3</sup>,ê,Û,·B

DISC1:\BENCH\SUPERPAI

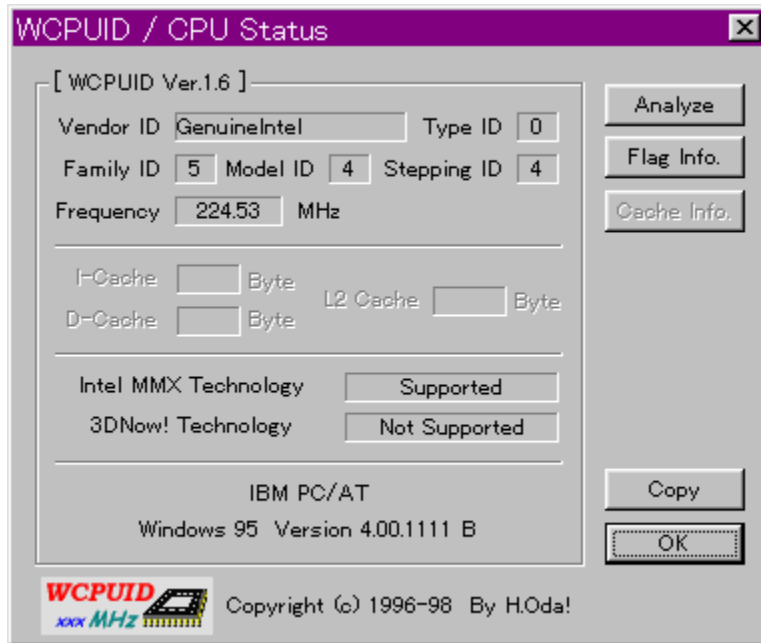
{button ,EF(`powinst', `SUPERPAI',1)} ftf@fCf<,lfRfs



# WCPUID.EXE Version 1.6 for Win32

 fCf“fXfg[]f<,iŽÀ[]s

 %œ-ÊfCf[][]fW



 žû~^ftfHf<f\_

DISC1:\BENCH\WCPU160

---


 []\$[]

H.Oda!Ž  
<http://www2.tky.3web.ne.jp/~nrklv/>

---

 “à-e

Windows 95/NT 4.0 ě, Ā ACPU, ĩNf ĩbfNŽü”g ĩ” ĩA, ”, æ, ŃMMXfefNfmf ĩfWfTf ĩ ĩfg, ĩ—  
L-³, đ’@’è, ., éfvf ĩfOf%of€ , Ā, . ĩB  
Intel ĩAAMD ĩACyrix ĩAIDT, ĩŠeŽ ĩCPU, É’ĭ%ž, ĩ, Ā, ĩ, Ü, . ĩB

 @ ĩÚ, ĩ, ĩ ĩADISC1:\BENCH\WCPU160\WCPUID.TXT, đ, ²—, , ³, ³, ĩ ĩB

**WCPUID / CPU Status** [X]

[ WCPUID Ver.1.6 ]

Vendor ID  Type ID

Family ID  Model ID  Stepping ID

Frequency  MHz

---

I-Cache  Byte L2 Cache  Byte

D-Cache  Byte

---


Intel MMX Technology

3DNow! Technology

---

IBM PC/AT

Windows 95 Version 4.00.1111 B

**WCPUID**  **xxx MHz** Copyright (c) 1996-98 By H.Oda!



Windows 95/NT 4.0 Ā Ā ACPU, ĩfNf ĩfbfNŽü”g ĩ” ĩA, ”, æ, ÑMMXfefNfmf ĩfWfTf|  
 ĩ[fg, ĩ—L-<sup>3</sup>, đ’ā’è, , éfvf ĩfOf%of€ , Ā, · ĩB  
 Intel ĩAAMD ĩACyrix ĩAIDT, ĩŠeŽíCPU, É’î%ž, μ, Ā, ϕ, Ü, · ĩB  
 ĩÚ, μ, ĩ, ±, ĩ, ϕ, đ, <sup>2</sup>—, , <sup>3</sup>/<sub>4</sub>, <sup>3</sup>, ϕ  
 {button ,EF( `powinst.exe', `WCPU160 /V WCPUID.TXT',1) } ĩ@DISC1:\  
BENCH\WCPU160\WCPUID.TXT

DISC1:\BENCH\WCPU160

{button ,EF(`powinst',`WCPU160',1)} fCf“fXfg□[f<.lŽÀ□s



# HDBENCH(ハードディスクベンチマーク) Ver 2.61

インストール

実行

The screenshot shows the HDBENCH application window with the following data:

Category	Sub-category	Value
総合 (Overall)	ALL	8589
	CPU	15423
	メモリ (Memory)	13361
VIDEO	浮動小数点 (Floating Point)	13761
	整数演算 (Integer Calculation)	13761
	矩形 (Rectangle)	19679
	円 (Circle)	2050
	テキスト (Text)	7048
DISK	READ (KB/s)	5392
	WRITE (KB/s)	5360
DRIVE	DRIVE	C:\Hard Disk
	使用容量 (Usage)	10MB

オプション (Options):

- READから測定 (IDEバスマスタ等)
- ドライブ情報もレポートする。
- 結果のみコピーする。
- CD-ROM方式 (既存ファイルリット)
- DirectDrawも測定する。

実行

DISC1:\BENCH\HDBE261

インストール

EP82%ü/,©, Ž



“à—e

fn[fhfffBfXfN[A•`%œ[ACPU,ì'¬,³,ð'â'è,·,évf[fOf%of€,Å,·B^È%oº,ì[€-Ú,É,Â,ç  
,Ä,ì'â'è,ð[s,È,ç,Û,·B  
[Efn[fhfffBfXfN  
fS[fh[Af%ofCfjg[AfLfffbfVf...,ì1•bŠÔ,ì“]’—byte”  
[E•`%œ  
1•bŠÔ,ì<éÇ`[•%o~[•fXfNf[[f<,ì•`%œ%oñ”  
[ECPU  
1•bŠÔ“-,½,è,ì•,“®[¬[“”\_%%oŽZ[•[®[“”%%oŽZ,ìEvŽZ%oñ”



[@Ú,μ,Í[AHDBENCH.HLP,ð,²—,¾,¾,ç[B

HDBENCH

終了 コピー 印刷 システム グラフ ヘルプ

ALL 総合 8589

CPU 浮動小数点 15423 整数演算 13761 メモリー 13361

VIDEO 矩形 19679 円 2050 テキスト 7048 スクロール 17 DirectDraw 2

DISK READ (KB/s) 5352 WRITE (KB/s) 5360 DRIVE C:\Hard Disk 使用容量 10MB

プラグイン測定用

Start 0 オプション 結果コピー

オプション

- READから測定 (IDEバスマスタ等)
- ドライブ情報もコピーする。
- 結果のみコピーする。
- CD-ROM方式 (既存ファイルリット)
- DirectDrawも測定する。

fn[fhfffBfXfN]A•`%œ[ACPU,ì¬,³,ð'â'è,·,éfvf[fOf%of€,Å,·B^È%º,ì€-  
Ú,É,Â,ç,Ä,ì'â'è,ð[s,È,ç,Û,·B  
[Efn[fhfffBfXfN  
fŠ[fh[Af%ofCfG[AfLfffbfVf...,ì1•bŠÔ,ì"]—byte"  
[E•`%œ  
1•bŠÔ,ì<éœ`[•%~[•fXfNf[[f<,ì•`%œ%ñ"  
[ECPU  
1•bŠÔ"-,½,è,ì•,"®[¬[""\_%%ŽZ[•[®["%%ŽZ,ìEvŽZ%ñ"  
[Ú,μ,,í,±,¿,ç,ð,²—,,¾,³,ç  
{button ,EF(`powinst.exe',`HDBE261 /V  
HDBENCH.HLP',1) }@[HDBENCH.HLP



DISC1:\BENCH\HDBE261

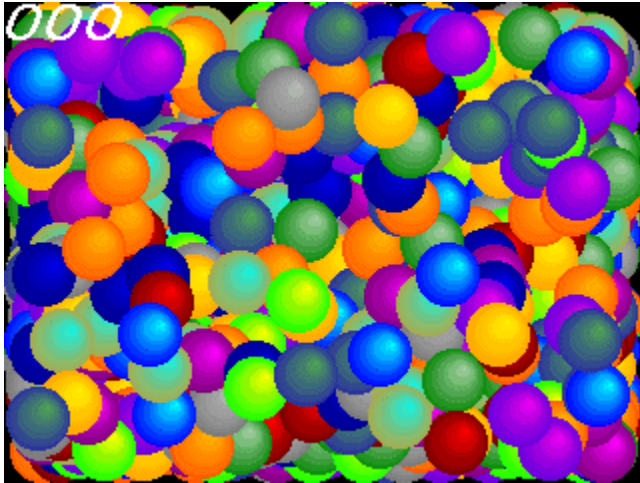
{button ,EF(`powinst',`HDBE261',1)} fC“fXfg[]f<,iŽÀ[]s



# DDBENCH(DirectDrawÍPÝÁ) Ver 1.41

 fCf“fXfg[]f<,ižÀ[]s

 %œ-ÊfCf[][]fW



 žû~^ftfHf<f\_

DISC1:\BENCH\DDBEN141

---

 []\$[]ì

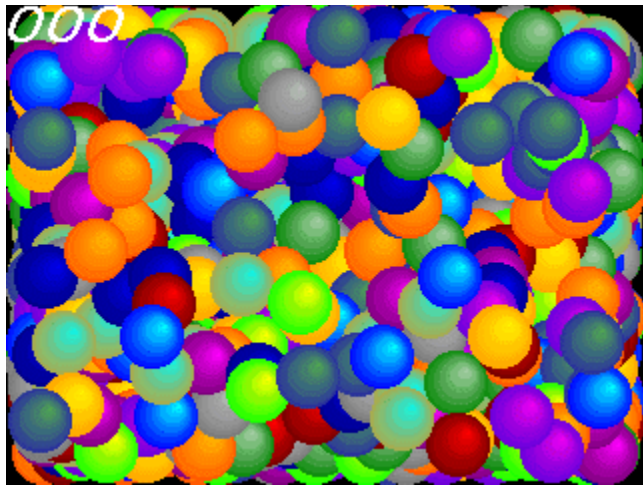
EP82%œù/,©,., ž  
<http://www.lares.dti.ne.jp/~ep82kazu/>

---

 “à—e

DirectDraw,ì`%œ’-“x,đ’è,.,éfvf[]fOf%œf€,Á,·BžÀ[]s,·,é,Æ[]A2,000-‡,ÌSPRITE,đ·\  
ž!,<sup>3</sup>,<sup>1</sup>,<sup>1</sup>/<sub>2</sub>,Æ,«,ì,P·bšŌ,ì%œ-Ê[]’,«š·,ì%œñ[]”,đ[][]ã,É·ž!,μ,Û,·[]B  
DirectDraw,í[]ADISC2,É“ü,Á,Á,ç,éDirectX,đfCf“fXfg[]f<,·,é,±,Æ,É,œ,èžg—p,Á,«,Û,·[]B

 @Ú.Í.Í. ADDBENCH.HLP.δ<sup>2</sup>—.,<sup>3</sup>/<sub>4</sub>.<sup>3</sup>.çB



DirectDraw,ì•`%œ'¬“x,đ'è',·,éfvf□fOf%of€,Å,·□BŽÀ□s,·,é,Æ□A2,000-  
‡,ìSPRITE,đ•\Ž!,<sup>3</sup>,<sup>1</sup>/<sub>2</sub>,Æ,«,ì,P•bŠÔ,ì%œ-Ê□',«Š·,!'%ň□”,đ□¶□ã,É•\Ž!,μ,Ü,·□B  
DirectDraw,í□ADISC2,É“ü,Á,Ä,ç,éDirectX,đfCf“fXfg□[f<,·,é,±,Æ,É,æ,èŽg—  
p,Å,«,Ü,·□B  
□Ú,μ,,í,±,ç,đ,<sup>2</sup>—,„<sup>3</sup>/<sub>4</sub>,<sup>3</sup>,ç  
    {button ,EF(`powinst.exe',`DDBEN141 /V  
DDBENCH.HLP',1) }□@DDBENCH.HLP

DISC1:\BENCH\DDBEN141



{button ,EF(`powinst',`DDBEN141',1)} fC“fXfg[]f<,iŽÀ[]s



# GBENCH32 3.0

GBENCH32

ASD32 Performance Test



Z0~^ftfHf<f\_

DISC1:\BENCH\GBENCH30

---

\$i

,Ü,é, ,č Ž

---



“à—e

fOf%oftfBfbfN,ì«”\,đ’è,·,éfvf[]fOf%of€,Å,·B32bit,lfXfvf%ofCfGfGf“fWf”,đ—~—  
p,μ,ÄA10•bŠÔ,É%œ-Ê,ì’,«Š·,!,đ%½%ňs,È,!,é,©·\Ž!,μ,Û,·B



@Ú,μ,·ÍADISC1:\BENCH\GBENCH30\README.TXT,đ,<sup>2</sup>—,.,<sup>3</sup>/<sub>4</sub>,<sup>3</sup>,čB



fOf%oftfBfbfN,ì«" \,đ'á'è,·,éfvf[]fOf%of€,Å,·B32bit,lfXfvf%ofCfgrGf"fwf",đ— ~ —  
p,μ,ÄA10•bŠÔ,É%œ-Ê,ì',«Š·,|,đ%½%ñs,È,|,é,©•\Ž!,μ,Û,·B  
[]Ú,μ,,í,±,¿,ç,đ,<sup>2</sup>—, ,<sup>3</sup>/<sub>4</sub>,<sup>3</sup>,φ  
{button ,EF(`powinst.exe', `GBENCH30 /V README.TXT',1) }[]@DISC1:\  
BENCH\GBENCH30\README.TXT

DISC1:\BENCH\GBENCH30

{button ,EF(`powinst',`GBENCH30',1)} fC“fXfg□[f<,iŽÀ□s





# PFM486 Ver.1.77H • ]%œž”Å

ⓘ fCf“fXfg[]f<,ižÅ[]s

ⓘ  
%œæ-ÊfCf[][]fW

```
Performance of 486-PC Ver1.77h(C)1992-1995 DysanKeihin
H-----H
| P54C Frequency = 19.35 MHz Machine:AT v1.77h|
| CPUID Results = GenuineIntel Fam 5 Mdl 2 Stp12 |
| Ecache Read Time =4227 ns/dword (...wait, 1mb/s)|
| Ecache Write Time =4054 ns/dword (...wait, 1mb/s)|
| Memory Read Time =7835 ns/dword (...wait, 1mb/s)|
| Memory Write Time = 752 ns/dword (...wait, 5mb/s)|
H-----H
```

ⓘ  
Žú~^ftfHf<f\_

DISC1:\BENCH\PFM\_177H

---

ⓘ  
[]\$[]i

'æžO<ž•I ž[]

---

ⓘ  
“à—e

386 ^È[]~,) x86 CPU ,đžg,Á,½ PC ,iŠO•”f[]f,fš[]<“\,đ’@’è,,:éfvf[]fOf%of€  
,.Á,·[]Bf[]f,fšfo[]fXfgfš[]fh[]Af[]f,fšf%ofCfg[]ASO•”fLfffbfVf...fš[]fh[]ASO•”fLfffbfVf...f  
%ofCfg,l[]<“\,đ’@’è,,:é,±,Æ,ª,Á,«,Ü,·[]B

ⓘ @[]Ú,µ,·íADISC1:\BENCH\PFM\_177H\README.1ST,đ,²—,.,¾,³,¢[]B

```
Performance of 486-PC Ver1.77h(C)1992-1995 DysanKeihin
H-----H
| P54C   Frequency   = 19.35 MHz   Machine:AT  v1.77h|
|   CPUID Results   = GenuineIntel Fam 5 Mdl 2 Stp12 |
| Ecache Read Time  =4227 ns/dword (...wait, 1mb/s)|
| Ecache Write Time =4054 ns/dword (...wait, 1mb/s)|
| Memory Read Time  =7835 ns/dword (...wait, 1mb/s)|
| Memory Write Time = 752 ns/dword (...wait, 5mb/s)|
H-----H
```

386 ^È~ ,ì x86 CPU ,đŽg,Á,½ PC ,İSO•"f,fŠ«"\,đ'ª'è,·,évf fOf%of€  
,Å,·Bf,fŠfo[fXfgfŠ[fhAf,fŠf%ofCfgAŠO•"fLfffbfVf...  
fŠ[fhAŠO•"fLfffbfVf...f%ofCfg,İ«"\,đ'ª'è,·,é,±,Æ,ª,Å,«,Ü,·B  
U,μ,Í,±,¿,ç,đ,<sup>2</sup>—,¾,<sup>3</sup>,ϕ  
{button ,EF(`powinst.exe',`PFM\_177H /V README.1ST',1) }@DISC1:\  
BENCH\PFM\_177H\README.1ST

DISC1:\BENCH\PFM\_177H

{button ,EF(`powinst',`PFM\_177H',1)} fC“fXfg[]f<,iŽÀ[]s



# Performance meter for Intel 686 ver 2.1A

ftf@fCf<,lfRfs

%œ-ÊfCf[fW

```
C:\TEMP>pfm686

-- pfm686 ver2.0 DysanKeihin & (koji) --
-----
|CPU: P54C [GenuineIntel Fam5 Md12 Stp12]|
|-----|
| 133.27[MHz] | [ns/dword] | [CPUclocks]|
|-----+-----+-----|
| E-cache read | 12.106 | 1.613 |
| E-cache write | 44.904 | 5.984 |
| main read | 30.674 | 4.088 |
| main write | 45.183 | 6.022 |
|-----+-----+-----|
```

Zû~^ftfHf<f\_

DISC1:\BENCH\PFM68621

---

\$i

i,±,¶jŽA'æŽO<ž•lŽ

---

"à—e

Pentium^È~,)CPU,đŽg,Á,½ PC ,lŠO•"f,fŠfAfNfZfX'¬"x,đ'a'è,.,éfvfOf%of€,Á,·B

@Ú,µ,ÍADISC1:\BENCH\PFM68621\PFM686.DOC,đ,²—,¾,³,cB



```
C:\TEMP>pfm686
```

```
-- pfm686 ver2.0 DysanKeihin & (koji) --
```

```
|CPU: P54C [GenuineIntel Fam5 Md12 Stp12]|
```

```
| 133.27[MHz] | [ns/dword] |[CPUclocks]|
```

```
| E-cache read | 12.106 | 1.613 |
```

```
| E-cache write | 44.904 | 5.984 |
```

```
| main read | 30.674 | 4.088 |
```

```
| main write | 45.183 | 6.022 |
```

Pentium^È~ ,ìCPU,đŽg,Á,½ PC ,ìŠO•"f f,fŠfAfNfZfX' -"x,đ'è'è,·,évf f fOf%of€  
,Å,·B  
Ú,μ,,í,±,¿,ç,đ,²—,3/4,³,¢  
{button ,EF(`powinst.exe',`PFM68621 /V PFM686.DOC',1) }@DISC1:\  
BENCH\PFM68621\PFM686.DOC

DISC1:\BENCH\PFM68621

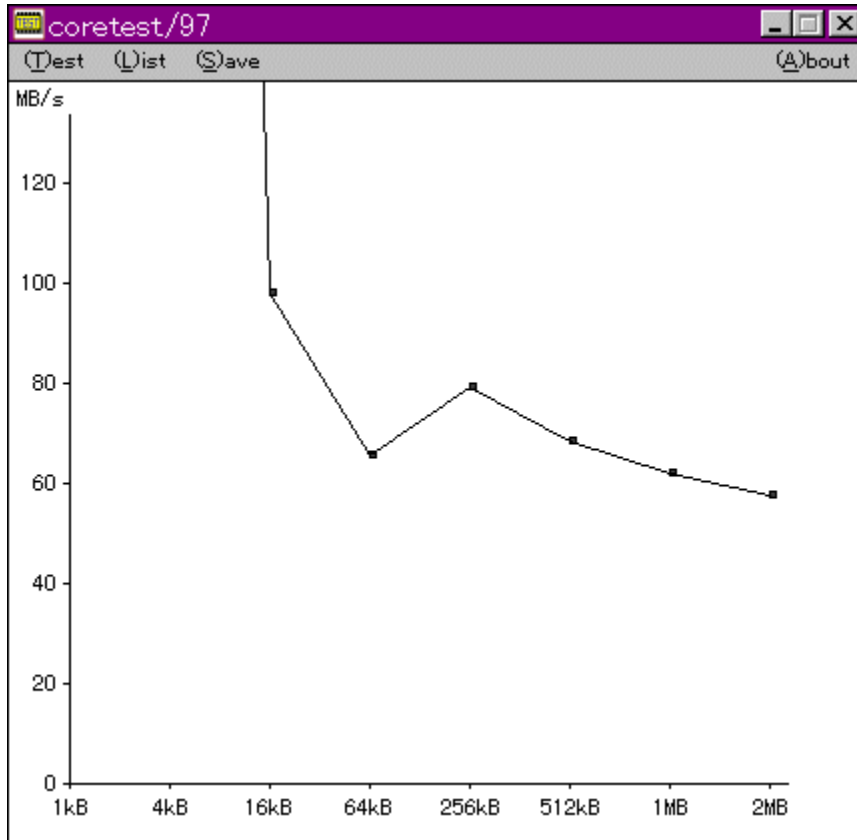
{button ,EF(`powinst',`PFM68621',1)} [ftf@fc.k.fRfs](mailto:ftf@fc.k.fRfs)



# CoreTest/97 1.01

CoreTest/97

CoreTest/97



CoreTest/97

DISC1:\BENCH\CTEST97B

CoreTest/97

'O'c<X>> Ž

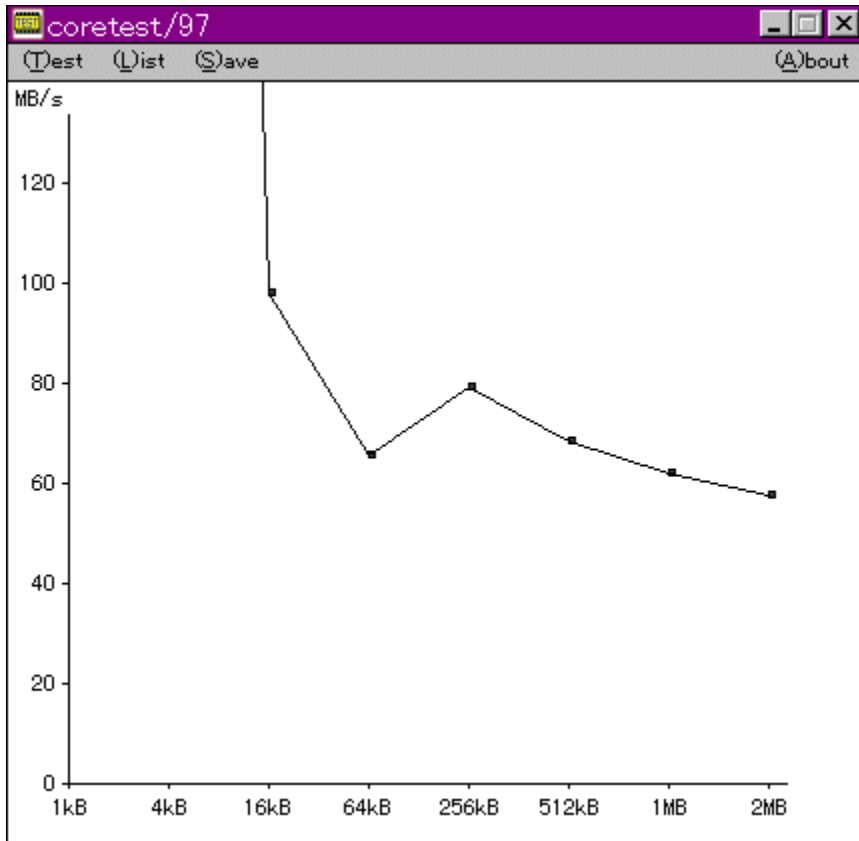


“à—e

f}fVf“,lf,fŠfAfNfZfXfXfs[fh,đ‘a’è,:.éfvf[fOf%of€,Å,·BÆv‘a•”,ÉVxD[i  
%o¼‘zfffofCfXfhf%ofCfo[j,đŽg—p,μAPentium,lrdtsc-½—  
ß,đŽg,Á,Ä³Šm,ÉŽžŠŎ‘a’è,đ[s,È,Á,Ä,ç,Ü,·B



@Ú,μ,íADISC1:\BENCH\CTEST97B\README.TXT,đ,²—,¾,³,çB





f}}fVf“ ,lf[]f,fŠfAfNfZfXfXfs[]fh,đ‘a’è,.,évf[]fOf%of€,Å,·[]BCEv‘a•” ,ÉVxD[]i  
%o¼‘zfffofCfXfhf%ofCfo[]j,đŽg—p,μ[]APentium,łrdtsc-½—  
ß,đŽg,Ä,Ä³Šm,ÈŽžŠÔ‘a’è,đ[]s,È,Ä,Ä,ç,Ü,·[]B  
[]Ú,μ,Í,±,¿,ç,đ,²—,³/4,³,ç  
{button ,EF(`powinst.exe', `CTEST97B /V README.TXT',1) }[]@DISC1:\  
BENCH\CTEST97B\README.TXT

DISC1:\BENCH\CTEST97B

{button ,EF(`powinst',`CTEST97B',1)} fC“fXfg[]f<,iŽÀ[]s



# VTBENCH DOS/V Text Video Benchmark Ver. 1.2

VTBENCH DOS/V Text Video Benchmark Ver. 1.2

VTBENCH DOS/V Text Video Benchmark Ver. 1.2

Mode	文字出力 (Characters/sec)	スクロール (Lines/sec)	独断偏見評価 (Score)
Direct	189272	2228	21084
BIOS	113563	19495	110695

この結果は「参考」程度にしてください  
結果については責任を負えません(^\_^;)   
[F]で結果をファイルに出力します。  
その他のキーで終了 [ ]

VTBENCH DOS/V Text Video Benchmark Ver. 1.2

DISC1:\BENCH\VBENCH12

VTBENCH DOS/V Text Video Benchmark Ver. 1.2

http://www.cadin.or.jp/users/baxsoft/

VTBENCH DOS/V Text Video Benchmark Ver. 1.2

“à—e

DOS/V,lfefLfxfg%œ-ÊŠÖEW,lfXfs[]fh,đŒv‘ª,·,évf[]fOf%œ€„,·BŠeŽí,lfhf  
%œCfo,đŽg—p,μ,½,Æ,«,É,Ç,Ì,ç,ç,ì%œ-Ê,Û,í,è,lfXfs[]fh,ª[]o,Ä,ç  
,é,©,đ‘Š‘Í“l,ÉŒv‘ª,μ,Û,·B•ŦŽŠ•Ž![]AfXfNf[][]f<,Æ,à,ÉfrfffIBIOS,Æ  
%œ¼‘zVRAM’¼[]Ú[]‘,«[]ž,Ý,ì—¼•û,ÂŒv‘ª,Â,«,Û,·B

 @[]Ú,μ,í[]ADISC1:\BENCH\VBENCH12\VTBENCH.DOC,đ,²—,¼,³,ç[]B

Scroll BIOS VTBENCH 1.2					Scroll BIOS T.Kitamura				
1	獵リ	獵リ	獵リ	高リ					
2	獵リ	獵リ	獵リ	高リ					
3	獵リ	獵リ	獵リ	高リ					
4	獵リ	獵リ	獵リ	高リ					
5	獵リ	獵リ	獵リ	高リ					
6	獵リ	獵リ	獵リ	高リ					
7	獵リ	獵リ	獵リ	高リ					
8	獵リ								
9	獵リ								
10	獵リ								
11	獵リ								
12	獵リ								
13	獵リ								
14	獵リ								
15	獵リ								
16	獵リ								
17	獵リ								
18	獵リ								
19	獵リ								
20	獵リ								
21	獵リ								
22	獵リ								
23	獵リ								

VTBENCH V-TEXT Benchmark by T.Kitamura  
 ビデオモード 03h 80字\*25行 640\*480  
 表示フォント 半角:8\*19 全角:16\*19

	Direct	BIOS
文字出力	189272字/秒	113563字/秒
スクロール	2228行/秒	19495行/秒
独断偏見評価	21084点	110695点

この結果は「参考」程度にしてください  
 結果については責任を負えません(^\_^;)  
 [F]で結果をファイルに出力します。  
 その他のキーで終了 [■]

F01	F02	F03	F04	F05	F06	F07	F08	F09	F10	F11	F12
-----	-----	-----	-----	-----	-----	-----	-----	-----	-----	-----	-----






DISC1:\BENCH\BENCH12

{button ,EF(`powinst',`VBENCH12',1)} fCf“fXfg□[f<,iŽÀ□s



# WHATIDE

 fC“fXfg [f<,iŽÀ s

 Žú~^ftfHf<f\_


DISC1:\BENCH\WHATIDE

---

 \$i

Tom Warren Ž

---

 “à—e

DOS ä, ÅIDE, lfn [fhfffBfXfN, i•ñ, ð•Ž!, ·, éfvf fOf%of€  
, Å, ·BfvfŠf“f\_ [ [ “Afwfbfh” A1fgf%ofbfN, , ½, è, lfZfNf^ “AfZfNf^fojbfjf@fTfCfY A  
1%oñ, iŠ,, èž, Y, É, “, -, éfZfNf^ (fuf fbfNf, [fh), ÆECCfofCfg, ð•Ž!, μ, Ú, ·B

 @Ú, μ, í ADISC1:\BENCH\WHATIDE\WHATIDE.DOC, ð, ²—, , ¾, ³, ç B

DOS ě, ÅIDE, ifn [fhfffBfXfN, i ě•ñ, đ•\Ž|, , évf [fOf%of€  
, Å, ·BfVfŠf“f\_ [ [ “ Afwfbfh [ “ A1fgf%ofbfN, , ½, è, lfZfNf^ [ “ AfZfNf^fofbftf@fTf  
CfY [ A1%oñ, ĪŠ,,, èž, Ý, É, ¨, , éfZfNf^ [ “ (fuf [fbfNf, [fh), ÆECCfofCf [g [ “, đ•\  
Ž|, μ, Ü, · [B  
 [U, μ, , í, ±, ç, đ, ² — —, , ¾, ³, ¢  
 {button ,EF( `..\MENU\DATA\IMPVIEW.EXE', `WHATIDE\  
WHATIDE.DOC', 1) } [ @DISC1:\BENCH\WHATIDE\WHATIDE.DOC

DISC1:\BENCH\WHATIDE

{button ,EF(`powinst', `WHATIDE',1)} fC“fXfg[]f<,iŽÀ[]s

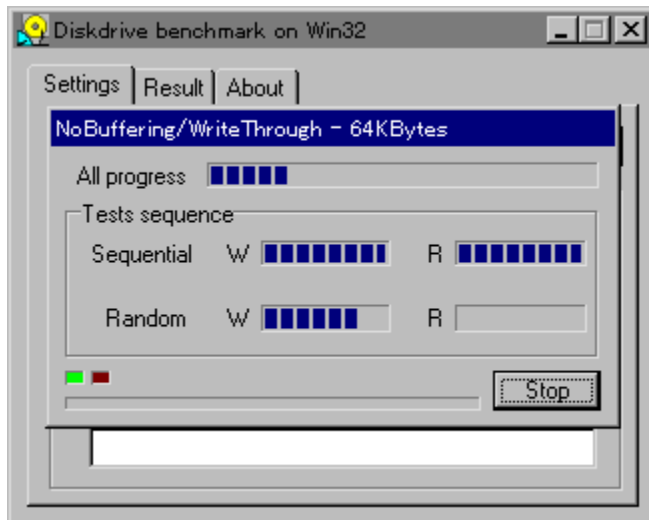




## Diskdrive benchmark on Win32 1.12

fc"fxfg[f<,ižA[s

%œ-Êfc[fW



žú~^ftfHf<f\_

DISC1:\BENCH\DBNCH112

---


\$i

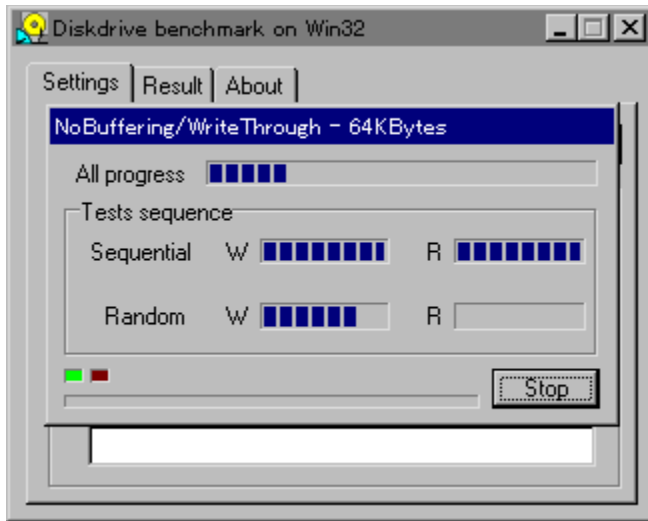
'É" c—Y"ňž  
<http://www.incom.ne.jp/~tsukada/>

---

"à—e

Win32ŠÂ<<Windows 95/NT 4.0/NT 3.51j%œ,É,"-,éAfŠf€[f ofuf<f[fffBfA,đ,Ó,-  
,pfffBfXfNfhf%fcfu,lfptfH[f}f"fx,đ'a'e,.,évf[fOf%of€,Å,·B

 @Ú,.,.Í ADISC1:\BENCH\DBNCH112\DBENCH32.HTM,ö,²—,.,¾,³,çB



Win32ŠÂ««iWindows 95/NT 4.0/NT 3.51j  
%º,É,¨,¯,éAfŠf€[fufuf<f[]ffBfA,ð,Ó,,PfffBfXfNfhf  
%fCfu,ìfpftfH[]f}f“fX,ð‘a’è,·,évf[]fOf%of€,Å,·[]B  
[]Ú,µ,,í,±,¿,ç,ð,<sup>2</sup>—,³/4,<sup>3</sup>,¢  
    {button ,EF(‘powinst.exe’,‘DBNCH112 /V DBENCH32.HTM’,1) }[]@DISC1:\  
BENCH\DBNCH112\DBENCH32.HTM

DISC1:\BENCH\DBNCH112

{button ,EF(`powinst',`DBNCH112',1)} fC“fXfg[]f<,iŽÀ[]s



# fm [fg,o,b—pfofbfefŠfefXfgfvf fOf%of€ Revision 0.21

ftf@fCf<,lfRfs

%œ-ÊfCf [fW

```
testbat.exe - test battery performance version 0.21
Copyright (c) 1994, 1995 Pierre. (Kazuhiro Inoue), All rights reserved.
```

```
Now ready to execute battery test.
Please disconnect external power supply.
BatteryPerformance test is started!
```

0	03:41:38	99
1	03:42:38	97
2	03:43:38	95
3	03:44:38	93
4	03:45:38	90
5	03:46:38	88
6	03:47:38	86
7	03:48:38	84
8	03:49:38	82

03:50:25

Zú~^ftfHf<f\_

DISC1:\BENCH\TESTBAT

---

\$

^ä"V ä ~a OŽ

---

"à—e



fm [fgfpf\frf", \fofbfefšž ±žžšô, ð'ª'è, ·éxf" f`f} [fNfvf\fof%of€, Å, ·B



@Ú, μ, í ADISC1:\BENCH\TESTBAT\TESTBAT.DOC, ð, ²—, , ³/4, ³, çB

```
testbat.exe - test battery performance version 0.21  
Copyright (c) 1994, 1995 Pierre. (Kazuhiro Inoue), All rights reserved.
```

```
Now ready to execute battery test.  
Please disconnect external power supply.  
BatteryPerformance test is started!
```

0	03:41:38	99
1	03:42:38	97
2	03:43:38	95
3	03:44:38	93
4	03:45:38	90
5	03:46:38	88
6	03:47:38	86
7	03:48:38	84
8	03:49:38	82

03:50:25

fm [fgfp]fRf", ifofbfefŠŽ ±ŽžŠÔ,đ'è,·,éxf"f`f} [fNfvf]fOf%of€,Å,·B  
Ú,μ,,l,±,ç,đ,<sup>2</sup>—,,<sup>3</sup>/<sub>4</sub>,<sup>3</sup>,φ  
{button ,EF(`powinst.exe', `TESTBAT /V TESTBAT.DOC',1) } @DISC1:\  
BENCH\TESTBAT\TESTBAT.DOC

DISC1:\BENCH\TESTBAT

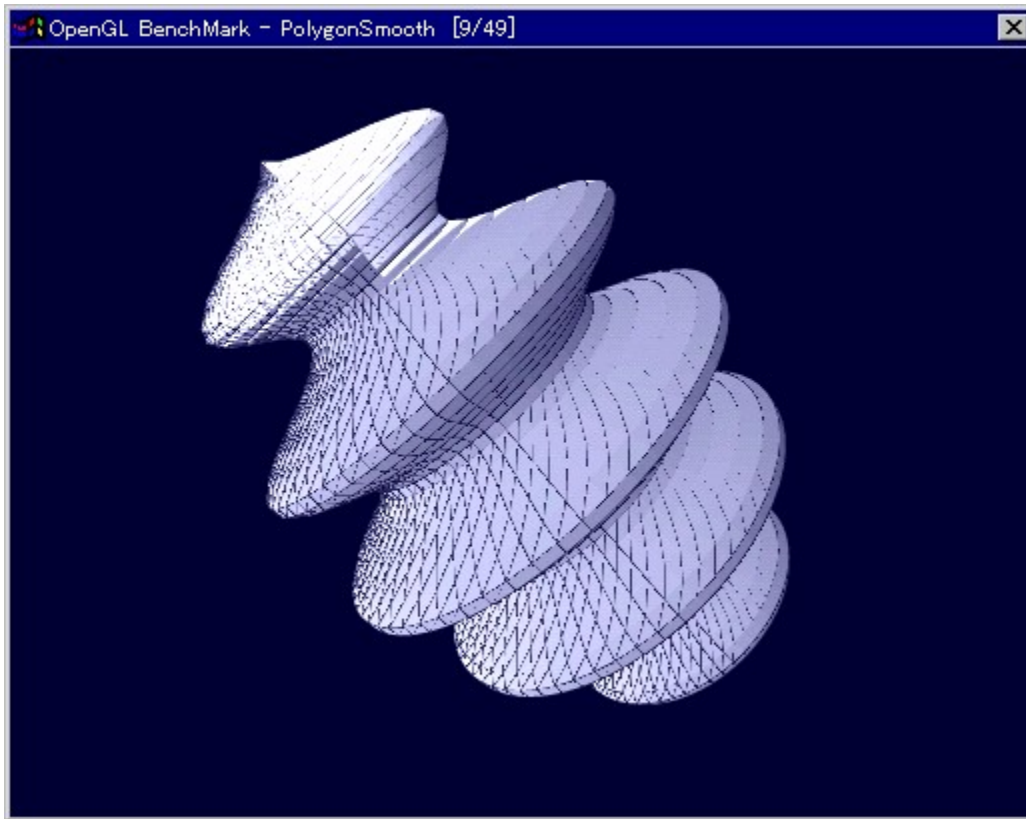
{button ,EF(`powinst', `TESTBAT',1)} ftf@fCf<,jRfs[]



# OpenGL Benchmark

fCf“fXfg [f<,ižÀ s

%oæ-ÊfCf [fw



žû~^ftfHf<f\_

DISC1:\BENCH\OGLB151I

---

ššì

Yoccyž  
<http://www.bekkoame.or.jp/~yoccy/index.html>

---



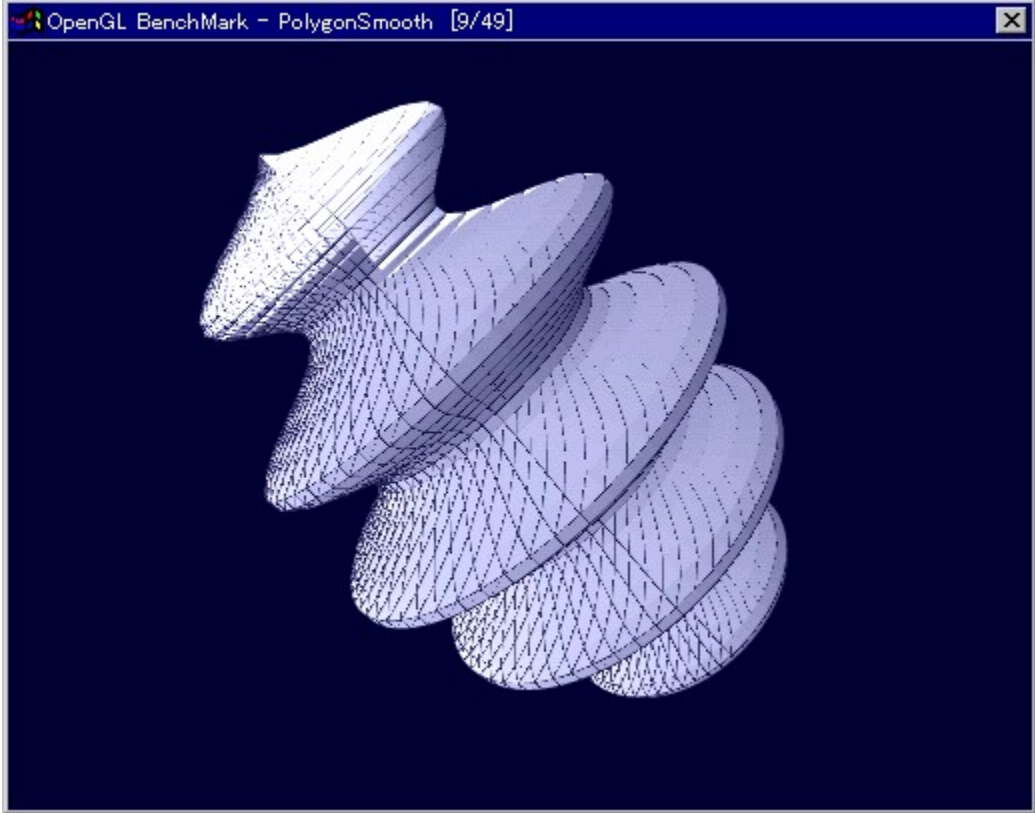
“à—e

OpenGL, ì•`%œ«”\, ð'ª'è, ., é, ½, ß, ìfvf[]fOf%of€ , Å, ·[]B



@Ú,µ,ÍADISC1:\BENCH\OGLB151\README\_J.TXT, ð,<sup>2</sup>—, ,<sup>3</sup>/<sub>4</sub>,<sup>3</sup>, ç[]B





OpenGL, ì • ` % œ « " \, ð ' à ' è , . , é , ½ , ß , ì f v f ò f O f % o f € , Å , • B  
U , μ , , í , ± , ç , ð , ² — — , , ¾ , ³ , ç  
{ button , EF ( ` powinst.exe ' , ` OGLB151I / V README\_J.TXT ' , 1 ) } @DISC1 : \  
BENCH\OGLB151\README\_J.TXT

DISC1:\BENCH\OGLB151I

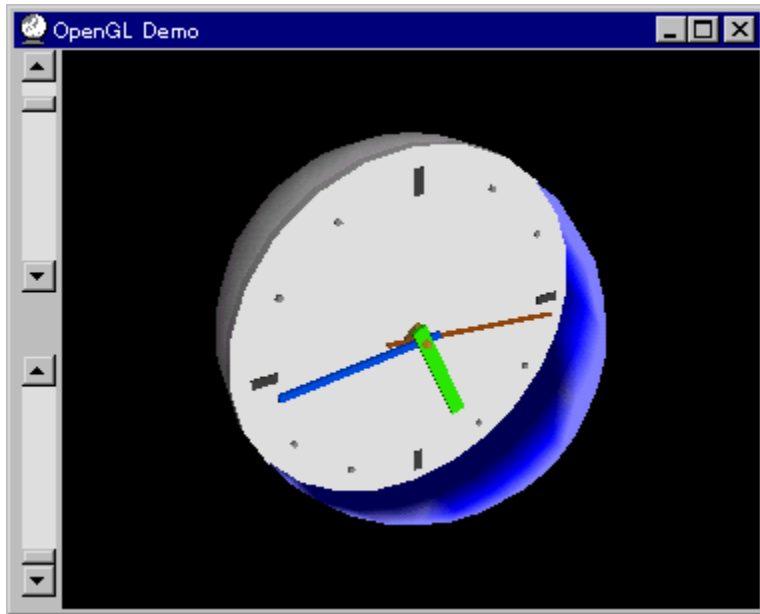
{button ,EF(`powinst',`OGLB151',1)} fCf“fXfg□[f<,iŽÀ□s



# OpenGL xYÀ²Ñ

fCf“fXfg[]f<,iŽÀ[]s

%ooæ-ÊfCf[][]fW



Žú~^ftfHf<f\_

DISC1:\BENCH\OPENGL11

---

[]\$[]i

Œ''~[]Œ ŽÒ Silicon Graphics, Inc. "[]Ú[]Afff,[]i[]- ,ä,ç Ž[]

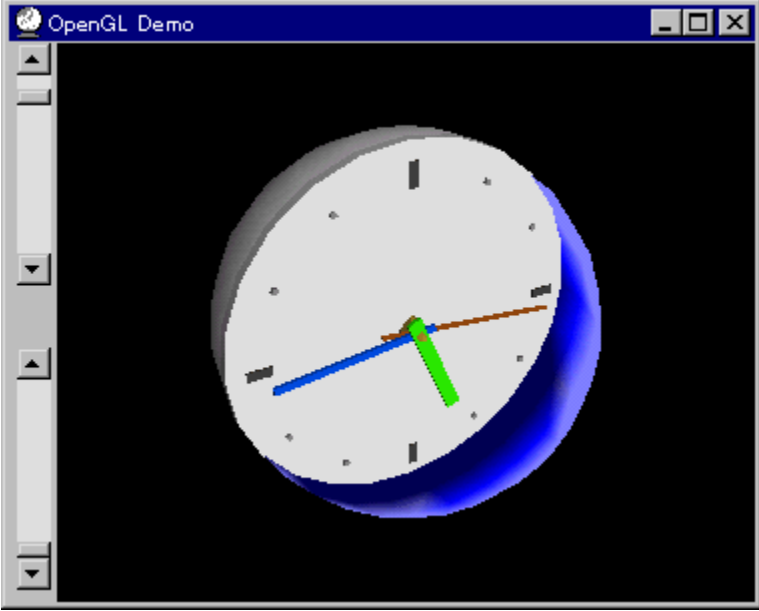
---

"à-e

OpenGL Benchmark,È,Ç[]AOpenGL'î%ož,lf\ftfg,ì"®[]i,É•K-v,Èf%of"f^fCf€f%ofCfuf

%ofŠ,ÆA,»,ê,đŽg,Á,½ff,fvfOf%of€,Å,·BfCf“fXfg[f<,·,é,±  
,Æ,É,æ,èADLL,ªVfXfef€ftfHf<f\_,ÉfRfs[,³,ê,Û,·B

**OpenGL,íAWindows NT 4.0 ,”,æ,Ñfo[fWf†f“4.00.950B^È~,ìWindows  
95i,ç,í,ä,éOSR2jAWindows 98,É,í•W€,ÁfCf“fXfg[f<,³,ê,Ä,ç  
,Û,·Bfo[fWf†f“4.00.950a^È‘O,ìWindows 95,đ,Žg,ç  
,ìê†,ìYAfCf“fXfg[f<,đs,È,Á,Ä,,¾,³,çB,Žg,ç  
,ìWindows,lfo[fWf†f“,íAfRf“fgf[f<fpf<,ìVfXfef€  
,ìfvfppfefB,ÅŠm”F,·,é,±,Æ,ª,Ä,«,Û,·B**





OpenGL Benchmark, È, Ç, AOpenGL 'Í%ž, ðftfg, ð" ® ðì, È•K—v, Èf%of“f^fCf€f  
%ofCfuf%ofŠ, ÆA, »è, ðŽg, Á, ½fff, fvf fOf%of€, Å, ·BfCf“fXfg[f<, ·, é, ±  
, Æ, È, æ, èADLL, ðVfXfef€ftfHf<f\_, ÈfRfs[ , ³, è, Û, ·B

### OpenGL, ÍAWindows NT 4.0

, ·, æ, Ñfo[fWf†f“4.00.950B^È~ , ÌWindows 95i, ç  
, í, ä, éOSR2jAWindows 98, È, Í•W€, ÅfCf“fXfg[f<, ³, è, Ä, ç  
, Û, ·Bfo[fWf†f“4.00.950a^È'O, ÌWindows 95, ð, Žg, ç  
, ðè†, ð, ÝAfCf“fXfg[f<, ðs, È, Á, Ä, , ¾, ³, çB, Žg, ç  
, ÌWindows, ðfo[fWf†f“, ÍAfRf“fgf[f<fpf<, ðVfXfef€  
, ðvf fpfefB, ÅŠm”F, ·, é, ±, Æ, ð, Å, «, Û, ·B

DISC1:\BENCH\OPENGL11

{button ,EF(`powinst',`OPENGL11',1)} fCf“fXfg[]f<,iŽÀ[]s



# WinGfpftfH [f}f“fXfefXfg GTEST ver.1.2

fC“fXfg [f<,ižÀ[s

%œ-ÊfCf [fW



žú~^ftfHf<f\_

DISC1:\BENCH\GT12G

---

š

,Ü,é, ,ç Ž

---



“à—e

WinG,ìfpftfH[f]f“fX,ð‘a’è,·,éfvf[fOf%of€,Å,·□B—L-¼,Èfxf“f`f}□[fnfefXfg,Å, ,é3DBEN  
CH,Æ“~,¶,æ,α,ÉEXÆü,ì□“l,ð□o,μ,Ù,·□B



□@□Ú,μ,·í□ADISC1:\BENCH\GT12G\README.TXT,ð,²—,.,¾,³,ç□B



WinG,lfpftfH[f}f“fX,đ'è',éfvf[fOf%of€,Å,·B—L-¼,Èxf“f`f}[fNfefXfg,Å, ,é3  
DBENCH,Æ“~,¶,æ,æ,ÈCEXCEü,ì“’l,đo,μ,Ü,·B  
Ú,μ,,í,±,¿,ç,đ,<sup>2</sup>—, ,<sup>3</sup>/<sub>4</sub>,<sup>3</sup>,ç  
{button ,EF(`powinst.exe',`GT12G /V README.TXT',1) }@DISC1:\BENCH\  
GT12G\README.TXT



DISC1:\BENCH\GT12G

{button ,EF(`powinst',`GT12G',1)} fCf“fXfg[]f<,iŽÀ[]s



