

fNfCfbfNfwf<fv

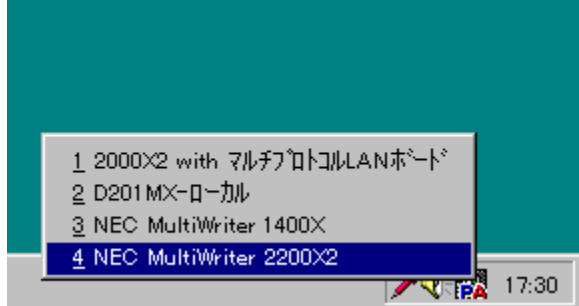
,í,¶,ß,É

,±,±,Á,í□APrintAgent,ìžã,È<@“\,É,Á,ç,Ä□AŠÈ'P,É□à-¾,µ,Û,·□B,æ,è□Ú□×,È□à-¾,ð,²—
,É,È,è,¾,ç□è□±,í□A,±,ìfwf<fv,ì¶□ã,ì□mfghfjbfN□n,ðfNfŠfbfN,µ•\Ž!,¾,è,¾-ÚŽŸ,©,ç,»,è,¼,è,ì□€-
Ú,ìfwf<fv,ð,²—,¾,¾,ç□B

PrintAgent

PrintAgent,í□AfvfŠf“f^,ð,æ,è%ø“K,ÉŽg,±,±,Æ,ª,Ä,«,éfvfXfef€
,Ä,·□B**PrintAgent**,É,í□AfvfŠf“f^fXfe□[f^fXfefBf“fhfE,ÆfŠf,□[fgfpflf<ª,è,Û,·□B**PrintAgent**,íWindo
ws NT 4.0f□of□fj“Žž,ÉŽ©“@“l,É—š,¿□ã,ª,è□Af^fXfnfo□[É**PrintAgentfAfCfRf“**,ª•\Ž!,¾,è,Û,·□B

fvfŠf“f^fXfe□[f^fXfefBf“fhfE



PrintAgentfAfCfRf“,ð¶fNfŠfbfN,µ•\Ž!,¾,è,¾fvfŠf“f^-¼,ìfŠfXfg,©,ç-
Ú“l,ìfvfŠf“f^,ð'ìð,·,é,Æ□AfvfŠf“f^fXfe□[f^fXfefBf“fhfE,ª•N“@,¾,è,Û,·□BfvfŠf“f^fXfe□[f^fXfefBf“f
hfE,í□A,“Žg,ç,É,È,Ä,Ä,ç,éfvfŠf“fsf...□[f^,ì%øæ-È□ã,Ä□AfvfŠf“f^,Ä,ì^ó□ü□ó<µ,â—pŽt□Ø,è,È,ç,ìfGf
%ø□[,ðŠÄŽ<,·,±,±,Æ,ª,Ä,«,éfvfŠf“f^fXfe□[f^fXfefBf“fhfE,í□A^ó□üŽž,ÉŽ©“@“l,É—
š,¿□ã,ª,è^ó□ü,ª□l,í,Á,¾,±,±,Æ,ð%øæ-È,â%ø¹□ª,Ä'm,ç,¹,Ä,è,Û,·□B,»,ì,¾,ß□A,í,´,´fvfŠf“f^,Û,Ä'«,ð
%ø^,Ñ^ó□ü,ª□l,í,Á,¾,±,±,Æ,ð%øæ-È,â%ø¹□ª,Ä'm,ç,¹,Ä,è,Û,·□B,»,ì,¾,ß□A,í,´,´fvfŠf“f^,Û,Ä'«,ð
BPrintAgent,ìfìfbfgf□□[fNfvfŠf“f^,ì^è•à□i,ñ,¾Žg,ç,â,·,¾,ð'ñ<Ÿ,ç,¾,µ,Û,·□B
*%øæ-È,í□A**MultiWriter 2200X2**,Ä,ì—á,Ä,·□B

fqf“fg

n PrintAgentfAfCfRf“,ð¶fNfŠfbfN,·,é,Æ□APrintAgent,ÄŽg—p,Ä,«,éfvfŠf“f^-¼,ì^è—
,ªCE»,è,Û,·□BfvfŠf“f^-
¾,ðfNfŠfbfN,·,é,Æ□A,»,ìfvfŠf“f^,ìfvfŠf“f^fXfe□[f^fXfefBf“fhfE,ª•N“@,µ,Û,·□Bf^fffbfN,¾,è,¾□ó^Ó,ÄfNfŠf
bfN,·,é,Æ□Af^fffbfN,ª□Ä,í□AfvfŠf“f^fXfe□[f^fXfefBf“fhfE,ª□l—¹,µ,Û,·□B

fŠf,□[fgfpflf<

fŠf,□[fgfpflf<,í□A□mfXf^□[fg□n□□mfvf□fOf%øf€□n□□mfvfŠf“f^<@Ží-
¾□n,ìt,ì□A□mfŠf,□[fgfpflf<□n,ðfNfŠfbfN,·,é,Æ•N“@,µ,Û,·□B**fŠf,□[fgfpflf<**,í□A,“Žg,ç,É,È,Ä,Ä,ç,éfvfŠf“fsf...
□[f^,ì%øæ-È□ã,Ä□AfvfŠf“f^,ì□Ÿ^è,ð•\Ž!,µfvfŠf“f^,ì'€□[fpflf<,Æ“™™,ì□Ÿ^è,ð,·,é,±,Æ,ª,Ä,«,éfvfŠf“f^fXfe□[f^fXfefBf“fhfE,ª•N“@,µ,Û,·□Bf^fffbfN,¾,è,¾□ó^Ó,ÄfNfŠf
ftfGfEfFfA,Ä,·□B**fŠf,□[fgfpflf<**,ì,è,¾,è,ì<@“\,ð—~p,Ä,«,é,©,ç,±,ç,©,í□AfvfŠf“f^,ª¼□Ú,Ä,È,ª,Ä,Ä,ç,éfvfŠf“fsf...□[f^,ìOS,Æ□AfvfŠf“f^,ìfNfZfXCE,É,æ,Ä,Ä•l,í,è,Û,·□B

fqf“fg

n fìfbfgf□□[fN<±—LfNfvfŠf“f^,Ö,ì□Ÿ^è,ì□',«□ž,Ÿ,ìfZfLf...fŠfefB□ã,Ä,«,Û,¹,ñ□B□Ÿ^è,ì•\Ž!,ì%øÄ“\,Ä,·□B

ŽQ□Æ

[fvfŠf“f^,ìfNfZfXCE,Æ,²~—p,É,È,è,éft□\[fefBšfefB](#)

PrintAgent™,Æ,Í□H

PrintAgent,Í□Afrf“fsf...□[f^,ÆfvfŠf“f^,Æ,Å□î•ñ,đ‘ŠCEÝ,ÉCEđŠ·,·,é,±,Æ,É,æ,è□AfvfŠf“f^,đ,æ,è%ö“K,É,²—
~—p,ç,½,¾,¾,¾,β,lfVfXfef€,Å,·□B

n PrintAgent,É,Í□A,“Žg,ç,lfRf“fsf...
□[f^,©,çfvfŠf“f^,ì□ó‘Ô,đŠm“F,Å,«,éfvfŠf“f^fXfe□[f^fXfEfBf“fhfE□iPSW□j,Æ□AfvfŠf“f^,ì‘€□ifpfIf<,Å□s,Á,
Ä,ç,½ŠeŽí□Y‘è,đfRf“fsf...□[f^□ä,©,ç□s,ì,éŠf,□[fgfpfIf<,ª, ,è,Û,·□B

n PrintAgent,Í□Aflfbfgf□□[fNfvfŠf“f^,É,à‘í%ž,μ,Ä,ç,Û,·□B—£,è,½,Æ,±,è,É, ,éfvfŠf“f^,ì□ó‘Ô,ª,í,©,ç,È,ç
,Æ,ç,æ□]—^,ì-à‘è,đ‘å•□,É%öđCE^,μ,Û,·□B

CE — ~,É,Â,ç,Ä

,±,lfVfXfefEjFfA,Æ,».,ì;□»•“,ÉŠÖ,·,é^è•”,Û,½,í,·,x,Ä,ìCE —~,í“ú—{“d<CŠ”Ž@%öiŽĐ,É<A‘® ,μ,Û,·□B

Copyright (C) NEC Corporation 1996-1998

All Rights Reserved

-Æ□Ó,É,Â,ç,Ä

“ú—{“d<CŠ”Ž@%öiŽĐ,Í□A—~—pŽÒ,ª,±,lfVfXfefEjFfA,đŽg—p,·,é,±,Æ,É,æ,Á,Ä□¶,¶,½•s—~%öV,ì□Ó“C,đ•%ö
,ç,Û,¹,ñ□B—~—pŽÒ,Í□A—{fVfXfefEjFfA,ì^è•”,Û,½,í‘S•”,đfŠfo□[fXfGf“fWjffAfŠf“fO,â<tfRf“fpfCf<,É,æ,è□A
%öđ□Í□A%öü‘ç,È,Ç,·,é,±,Æ,Í,Å,«,Û,¹,ñ□B,Û,½□A,±,lfVfXfefEjFfA,É•í□X,đ
%öÁ,ì,½□è□‡,É,í“®□ì•Û□Ø,ì‘î□ÚŠO,Æ,È,è,Û,·□B

Microsoft□AWindows□AWindows NT,Í•Ä□‘ Microsoft ŽĐ,ì•Ä□‘,“,æ,Ñ,»,ì‘¼,ì□‘,É,“, ,é“o~^□¶•W,Ä,·□B

IBM□APC/AT,Í•Ä□‘International Business Machines Corporation,ì•Ä□‘,“,æ,Ñ,»,ì‘¼,ì□‘,É,“, ,é“o~^□¶•W,Ä,·□B

PrintAgent,Í“ú—{“d<C(Š”),ì□¶•W,Ä,·□B



PrintAgent,ð,²—~—p,É,È,ê,éŠÂ««

PrintAgent,ÍAMicrosoft Windows NT 4.0i“ú—{CEê”Áj□ã,Á“®□ì,·,éfvfvgfEjFfA,Á,·□B

n “®□ifRf“fsf...□f^

NEC PC98-NXfvfŠ□fY, PC-9800fvfŠ□fY,Ü,½,ÍIBM PC/AT 100%CEÝŠ·@

n “®□ì,n,r

Microsoft Windows NT Workstation 4.0i“ú—{CEê”Áj

Microsoft Windows NT Server 4.0i“ú—{CEê”Áj

n fRf“fsf...□f^,ìf□,fŠ

16MfofCfj^È□ã□B32MfofCfj^È□ã,ð□,□\$,ç,½,μ,Ü,·□B

n fvfŠf“f^fCf“f^ftfF□fX

PC-9800fvfŠ□fY,ÁfvfŠf“f^,ðf□□fjF<Ú’±,Á,²—~—p,É,È,é□ê□#,É,ÍA36fsf“fjF
%oífCf<fCf“f^ftfF□fX,²•K—v,Á,·□B14fsf“fjF%oífCf<fCf“f^ftfF□fX,ð’•”ö,·,éPC-9800,â□APC-
H98□ASV-H98fvfŠ□fY,ìfpf%oífCf<fCf“f^ftfF□fX,Á,àPrintAgent,ð,²—~—p,ç,½,¾,·,Ü,·,²□A—{—
^,ì<@“\,ð,“Žg,ç,ç,½,¾,·,È,ç,½,β□AfvfŠf“f^□□YfCf“f^ftfF□fXf{□f□h□iPC-9801-94□j,ðRf“fsf...
□f^,É’•...μ,Á,²—~—p,μ,Á,ç,½,¾,·,±,Æ,ð□,□\$,ç,½,μ,Ü,·□B

n f}fEjX

,²Žg—p,ð□,□\$,ç,½,μ,Ü,·□B

n fTfEj“fh

PSW,Á%o¹□□f□fjZ□fW,É,æ,éfvfŠf“f^,ì□ó’Ô’È’m<@“\,ð,²—~—p,É,È,è,½,ç□ê□#,É•K—v,Á,·□B,²—~—
—p,É,Í□A,“Žg,ç,ìWindows,É’í%ož,μ,½PCM□Á□¶,²%oÁ“\,ÈfTfEj“fh<@“\,²•K—v,É,È,è,Ü,·□B,“Žg,ç
,ìRf“fsf...□f^,É,±,ì<@“\,²,É,ç□ê□#,Í□APCM□Á□¶,²%oÁ“\,ÈfTfEj“fhf{□f□h,âTfEj“fhj□f□h,ð,²—p^Ó,-
,¾,¾,ç□B

n flfbfjg□□fN

PrintAgent,ÍAflfbfjg□□fN□ã,ÁWindows 95, Windows NT,Á<α—L,³,è,Ä,ç,éPrintAgent’Í
%ožfvfŠf“f^,â□ALANf{□f□h□iLANfAf_fvf^□j,ð’•...μflfbfjg□□fN,É’¼□Ú□Ú’±,³,è,½PrintAgent’Í
%ožfvfŠf“f^,É’í,μ,Á,à,²—~—p,ç,½,¾,·,Ü,·□Bflfbfjg□□fN,ð%oî,μ,ÁPrintAgent’Í%ožfvfŠf“f^,ð,²—~—
p,É,È,é□ê□#,É,Í□A,“Žg,ç,ìRf“fsf...□f^,ìWindows,Á—~—p,Á,«,éNetBEUI□ATCP/IPfvf□fjgRfç,É’í
%ož,μ,½flfbfjg□□fNfAf_fvf^f{□f□h□o^f□f□h,È,Ç,²•K—v,Á,·□B,»),¼□Aflfbfjg□□fNfP□fuf<,È,Ç,à•K—
v,É,È,è,Ü,·□B

n fvfŠf“f^fP□fuf<

PC-PRCA-01,Ü,½,Í““™•i□iNEC PC98-NXfvfŠ□fY, IBM PC/ATCEÝŠ·@□j
PC-CA202, PC-CA204,Ü,½,Í““™•i□iNEC PC-9800fvfŠ□fY□j

,²□^Ó

n fvfŠf“f^,ìfvf□fpfefB,ì□A□mf□f□g□n□□m’o•ûCEüfTf□f□g,ð—LCEø,É,·,é□n,²f`fffbfN,³,è,Ä,ç
,É,ç□ê□#,Í□A,»),ìfvfŠf“f^,É’í,μPrintAgent,ì<@“\,Í—~—p,Á,«,Ü,¹,ñ□B

n fvfŠf“f^fofbftf@,â□APC-9800fvfŠ□fY,ÁRf“fsf...□f^—{‘í,É•t’@,ìfvfŠf“f^fCf“f^ftfF□fX•íŠ·fAf_fvf^,ð
%oî,μ,ÁPrintAgent’Í%ožfvfŠf“f^,ð□Ú’±,μ,Á,ç,é□ê□#,Í□APrintAgent,Í,²—~—p,É,È,è,Ü,¹,ñ□B,±,ì□ê□#□A,±
,ìfvfŠf“f^,É,Á,ç,Á,Í□AfvfŠf“f^,ìfvf□fpfefB,ì□mf□f□g□n□□m’o•ûCEüfTf□f□g,ð—
LCEø,É,·,é□n,ìf`fffbfN,ð,Í,·,μ,Á,“Žg,ç,·,¾,¾,ç□B

n Windows NT 4.0,ìfvfŠf“f^fv□fç,ìftf□f□g,μ,Á,ç,Ü,¹,ñ□Bf□□fjF<fvfŠf“f^,ì□ê□#,â□Aflfbfjg□□fN<α—
LfvfŠf“f^,²¼□Ú,Á,È,²,Á,Ä,ç,éRf“fsf...□f^,ìOS,²Windows NT 4.0,ì□ê□#□AWindows NT
4.0□ã,ì,·,x,Ä,ìfvfŠf“f^,ì□mfvf□fpfefB□n□□mf□f□g□n□□mfvfŠf“f^fv□fç,ð—
LCEø,É,·,é□n,ìf`fffbfN,ð,Í,·,μ,Á,²Žg—p,·,¾,¾,ç□BmfvfŠf“f^fv□fç,ð—
LCEø,É,·,é□n,ðf`fffbfN,μ,½□ê□#□AfvfŠf“f^,ì□ó’Ô,²□³,μ,·,Ž!,³,è,Ü,¹,ñ□B□Ú,μ,,ìfvfŠf“f^,ìfvfçfv,ð,²—~—,

,³/₄,³,ç□B

n ,²Žg—p,É,È,Á,Ä,ç,éfvfŠf“f^,É,æ,Á,Ä□APrintAgent,³fTf|□[fg,μ,Ä,ç,éOS,â□ALANf{□[fh□iLANfAf_fvf^□j,ìŽí
—p,^a^Ù,È,è,Û,·□B□Ú,μ,,í□AfvfŠf“f^,É•t’@,ìft□[fU□[fyf}fjf...fAf<“™,Ä,²Šm“F,,³/₄,³,ç□B

n PrintAgent,ìfvfŠf“f^,ì□ó‘ÔŽæ“³/₄,ð’èŠú“l,É□s,Á,Ä,ç,Û,·,²□A•\Žì,³,è,é□ó‘Ô,ì•ì
%o»,ìf^fCf~f“fO,²□AZÄ□Ú,ìfvfŠf“f^,ì•ì%o»,Æ,í^Ù,È,é,±,Æ,², ,è,Û,·,ì,Ä,²—¹□³,³/₄,³,ç□B

ŠÖ~A□€-Ú

PrintAgent,Ä,ìf|□[fg,ì□Ý’è

PrintAgent, Ī<N“®

PrintAgent, ĪWindows NT 4.0f□fOfJf“Žž,ÉŽ©“®“l,É—š,ž□ã,à,è□APrintAgentfAfCfRf“,âf^fXfNfo□[,É•\
Žl,³,ê,Û,·□B

n flfbfgf□□[fN<α—LfvfŠf“f^,ð,²—~—p,ì□ê□#□Aft□[fo,Æ,È,éfRf“fsf...□[f^,ÆfNf%ofCfAf“fg,Æ,È,éfRf“fsf...
□[f^,ì—¼•û,ÅPrintAgent,âfCf“fXfg□[f<,³,ê,Ä,ç,é•K—v,à, ,è,Û,·□B

n PrintAgent,â<N“® ,μ,Ä,ç,È,ç□ê□#,í□A□,ðfNfŠfbfN,·,é,©□A□mfXf^□[fg□n□□mfvf□fOf%of€□n□
□mfvfŠf“f^<@Ží-¼□n,ì’t,ì□A□mPrintAgentfVfXfef€<N“®□n,ðfNfŠfbfN,·,é,±,Æ,Ä<N“® ,Ä,«,Û,·□B

n fŠf.□[fgfpfJf<,âfvfŠf“f^fXfe□[f^fXfEfBf“fhfE,ð<N“® ,μ,½,è□AfvfŠf“f^fhf
%ofCfo,lfvf□pfefB,È,Ç,ðŠ),ç,½,è,·,é,ÆPrintAgent,ĪŽ©“®“l,É<N“® ,μ,Û,·□B

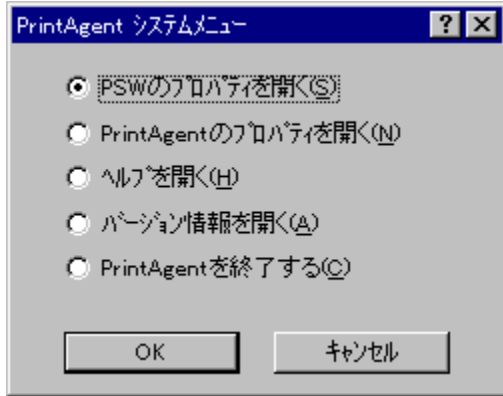
fqf“fg

n PrintAgent,â•s□³□l—¹,μ,½□ê□#,í□AZÿ,ì□€—Ú,ðŽQ□Æ,μ,Ä,,¾,¾,¾,ç□B

[PrintAgent,â<N“® ,μ,Ä,ç,È,ç](#)

PrintAgentVfXfef€f[]fjf...[]

PSW,lfvf[]fpfefB,ðŠJ,ç,½,è[]APrintAgent,lfvf[]fpfefB,ðŠJ,ç,½,è,·,é,±,Æ,ª,Å,«,Ü,·[]B
,ðfNfŠfbfN,·,é,©[]A[]mfXf^[][fg[]n[]|[]mfvf[]fOf%of€[]n[]|[]mfvfŠf“f^<@Ži-
¼[]n,i’t,[]A[]mPrintAgentVfXfef€f[]fjf...[][]n,ðfNfŠfbfN,·,é,ÆŠJ,,±,Æ,ª,Å,«,Ü,·[]B
,²—,É,È,è,½,ç[]€-Ü,ðfNfŠfbfN,μ,Ä,,¾,³,ç[]B



ŠÖ~A[]€-Ü

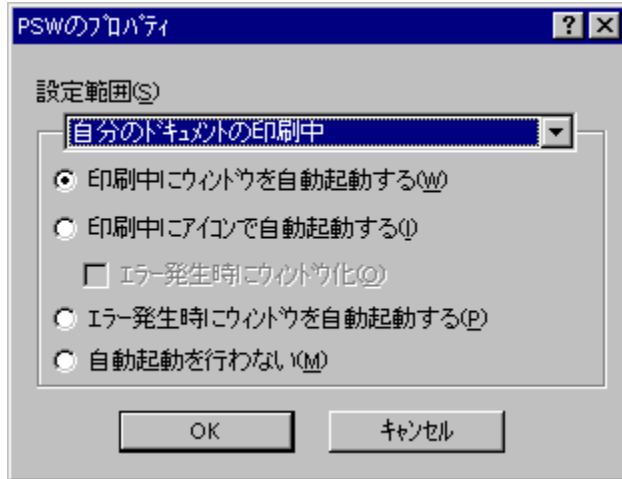
[PSW,lfvf\[\]fpfefB](#)

[PrintAgent,lfvf\[\]fpfefB](#)

[PrintAgent,i\[\]|—¹](#)

PSW,lfvfjpfefB

fvfŠf“f^fXfe[]f^fXfEfBf“fhfE[]iPSW[]iŽ©“@<N“@,i[]Y’è,đ[]s,!,Ü,·[]BPrintAgentfAfCfRf“,đ
%oEfNfŠfBfN,μ,Ä·\Ž!,³,è,é[]fj...[][,©,ç[]mPSW,lfvfjpfefB[]n,đfNfŠfBfN,·,é,±,Æ,ÅŠj,,±,Æ,^a,Ä,«,Ü,·[]B
,²—,É,È,è,½,ç[]€-Ü,đfNfŠfBfN,μ,Ä,,³/₄,³,ç[]B



fqf“fg

n PSW,lfvfjpfefB,Ä[]Y’è,μ,½“à—e,íft[]fU,²,Æ,É·Ü’¶,³,è[]A,»,lfRf“fsf...[]f^,É[]Ü’±,³,è,Ä,ç
,é,·,x,Ä,iPrintAgent’í%ožfvfŠf“f^,É<α’É,Ä,·[]B
n ~A’±^óü,ì“r’t,Ä,i[]Y’è,í—LCEø,É,È,è,Ü,¹,ñ[]B[]Y’è,μ,½“à—e,í[]AŽŸ%oñPSW<N“@Žž,©,ç—
LCEø,É,È,è,Ü,·[]B
n []Y’è”í’í,Ä[]mŽ©·^a,lfhfLf...f[]f“fg,đ^óü,μ,Ä,ç,É,ç,Æ,«[]n,^a’í’đ,³,è,Ä,ç,é,Æ,«,i[]Y’è[]€-
Ü,í[]AfvfŠf“f^,đŽÄ[]Ü,ÉŠç—[],μ,Ä,ç,é“Á’è,lfRf“fsf...[]f^,È,Ç,Ä,²—~—p,É,È,é,Æ·Ö—~,Ä,·[]B

,²^Ó

n ,”Žg,ç,É,È,Ä,Ä,ç,éfvfŠf“f^,É,æ,Ä,Ä,í[]A[]Y’è”í’í,ì[]mŽ©·^a,lfhfLf...f[]f“fg,đ^óü,μ,Ä,ç,É,ç,Æ,«[]n,í,²—~—
p,É,È,è,È,ç[]é[]#,^a, ,è,Ü,·[]B,“Žg,ç,É,È,Ä,Ä,ç,éfvfŠf“fsf...[]f^,É—{[]€-Ü,É’í%ož,μ,Ä,ç
,éfvfŠf“f^,iPrintAgent,afCf“fXfg[]f<,³,è,Ä,ç,é[]é[]#,í[]mŽ©·^a,lfhfLf...f[]f“fg,đ^óü,μ,Ä,ç,É,ç,Æ,«[]n,ì[]€-
Ü,í’í’ð%oÄ“\,É,È,è,Ü,·,ñ[]A’í%ož,μ,Ä,ç,É,çfvfŠf“f^,É’í,μ,Ä,í[]Y’è,μ,½[]€-Ü,í-³Ž<,³,è[]A[]mŽ©·^a,lfhfLf...
f[]f“fg,ì^óü+[]n,ì,Ÿ,²—~—p,ç,½,³/₄,~,Ü,·[]B[]Ü,μ,,í[]AfvfŠf“f^,íft[]fU[]fYf}fjf...fAf<,đ,²—~
,É,È,é,©[]A,“Žg,ç,É,È,Ä,Ä,ç,éfvfŠf“f^,iPSW,lfwf<fv,đ,²ŽQ[]Æ,,³/₄,³,ç[]B

PSW, iŽ©“®<N“® , iŃŸ’è”í’í, Ÿ’í’đ, μ, Ů, ·ŃB

ŃmŽ©•ª, iŃhfLf... fŃf“fg, i^óŃŮ’tŃn, iPSW, i“®Ń, ©ŃAŃmŽ©•ª, iŃhfLf... fŃf“fg, đ^óŃŮ, μ, Ä, ç, È, ç, Æ, «Ńn, i“®Ń, ©, Ÿ’í’đ, μ, Ů, ·ŃB

,²’Ń^Ó

n , Žg, ç, È, È, Á, Ä, ç, éfvfŠf“f^, É, æ, Á, Ä, íŃAŃŸ’è”í’í, iŃmŽ©•ª, iŃhfLf... fŃf“fg, đ^óŃŮ, μ, Ä, ç, È, ç, Æ, «Ńn, í,²—~—
p, È, È, è, È, çŃêŃ‡,ª, , è, Ů, ·ŃB, Žg, ç, È, È, Á, Ä, ç, éfRf“fsf...Ńf^, É—{Ń€—Ů, É’í%ž, μ, Ä, ç
, éfvfŠf“f^, iPrintAgent,ªfCf“fXfgŃf<,³, è, Ä, ç, éŃêŃ‡, íŃmŽ©•ª, iŃhfLf... fŃf“fg, đ^óŃŮ, μ, Ä, ç, È, ç, Æ, «Ńn, iŃ€—
Ů, í’í’đ%ž“\, È, È, è, Ů, ·ªA’í%ž, μ, Ä, ç, È, çfvfŠf“f^, É’í, μ, Ä, íŃŸ’è, μ, ½Ń€—Ů, í-³Ž<,³, èŃAŃmŽ©•ª, iŃhfLf...
fŃf“fg, i^óŃŮ’tŃn, i, Ÿ,²—~—p, ç, ½, ¾, -, Ů, ·ŃBŃŮ, μ, , íŃAfvfŠf“f^, iŃtŃfUŃfYf}fjf...fAŃ<, đ,²—~—
, È, È, é, ©ŃA, Žg, ç, È, È, Á, Ä, ç, éfvfŠf“f^, iPSW, iŃwf<fv, đ,²ŽQŃÆ, , ¾,³, çŃB

□mŽ©•ª,lfhflf...f□f“fg,ì^óü’t□n,ì,Æ,«

PrintAgent’í%žfvfšf“f^,É’í,μ,ÄŽ©•ª,ì^óüfhhflf...f□f“fg,ð’—

□M,μžn,β,½,Æ,«□APSW,ðŽ©“@“l,ÉfEfBf“fhfE□ó’Ô,Å<N“@,μ,Û,·□B

□mŽ©•ª,lfhflf...f□f“fg,ð^óü,μ,Ä,ç,È,ç,Æ,«□n,ì,Æ,«

PrintAgent’í%žfvfšf“f^,É’í,μ,ÄŽ©•ª,lfhflf...f□f“fg^ÈŠO,lfhflf...f□f“fg,ª’—

□M,ª,èžn,β,½,Æ,«□APSW,ðŽ©“@“l,ÉfEfBf“fhfE□ó’Ô,Å<N“@,μ,Û,·□B

n fXfv□[f<šJžn,ìžž“_ÄfGf%□[,ª“□¶,μ,Ä,ç,é,Æ,«,í□A,½,¾,ž,ÉfEfBf“fhfE•\Ž!,μ,Û,·□B

n ft□[fU,ª^óü,μ,½,·,x,Ä,ì^óüfhhflf...f□f“fg,É,Ä,ç,Ä□A^óü,ª□l—¹□A,à,μ,,í□A^óü,ª%½,ç,©,ì—□—

R,É,æ,è’tž~,ª,è,½□è□‡,ÉfEfBf“fhfE,ðŽ©“@“l,É□l—¹,μ,Û,·□B

,²’□^Ó

n LANf{□[fh□iLANfAf_fvf^□j,ðfT□[fo,ð%oi,ª,ª,Éžg—p,μ,Ä,ç,é□è□‡,í□AŽ©•ª,lfhflf...
f□f“fg^ÈŠO,ì^óü,ª□s,í,è,Ä,àž©“@<N“@,μ,Û,¹,ñ□B

□Ý'è"í^í,Å'í'δ,³,ê,½,»,ê,¼,ê,ìfP□[fX,É," ,éPSW,ìŽ©"®«N"®,ì•û-@,δ'í'δ,μ,Ü,·□B

□mŽ©•ª,lfhfLf...f□f“fg,ì^óü’t□n,ì,Æ,«

PrintAgent‘í%žvfšf“f^,É‘í,μ,ÄŽ©•ª,ì^óüfhfLf...f□f“fg,ð’—

□M,μžn,β,½,Æ,«□APSW,ðŽ©“®“l,ÉfAfCfRf“□ó‘Ö,Å<N“® ,μ,Ü,·□B

□mŽ©•ª,lfhfLf...f□f“fg,ð^óü,μ,Ä,ç,È,ç,Æ,«□n,ì,Æ,«

PrintAgent‘í%žvfšf“f^,É‘í,μ,ÄŽ©•ª,lfhfLf...f□f“fg^ÈŠÖ,lfhfLf...f□f“fg,ª’—

□M,ª,èžn,β,½,Æ,«□APSW,ðŽ©“®“l,ÉfAfCfRf“□ó‘Ö,Å<N“® ,μ,Ü,·□B

n fXfv□[f<šŽn,ìžž“_ ,ÄfGf%□[,ª“□¶,μ,Ä,ç,é,Æ,« ,í□A,½,¾,ž,ÉfAfCfRf“•žl,μ,Ü,·□B

n ft□[fU,ª^óü,μ,½,·,x,Ä,ì^óüfhfLf...f□f“fg,É,Ä,ç,Ä□A^óü,ª□l—¹□A,à,μ,,í□A^óü,ª%½,ç,©,ì—□—
R,É,æ,è’tž~ ,ª,è,½□è□‡,ÉfAfCfRf“ ,ðŽ©“®“l,É□l—¹,μ,Ü,·□B

,²’□^Ó

n LANf{□[fh□iLANfAf_fvf^□j,ðfT□[fo,ð%oi,ª, ,Éžg—p,μ,Ä,ç,é□è□‡,í□Až©•ª,lfhfLf...
f□f“fg^ÈŠÖ,ì^óü,ª□s,í,è,Ä,àž©“®<N“® ,μ,Ü,¹,ñ□B

□mŽ©•ª,lfhflf...f□f“fg,ì^óü't□n,ì,Æ,«

□m^óü't,ÉfAfCfRf“,ĂŽ©“@<N“@,·,é□n,ª'ì'ð,³,è,½□ó'Ô,Ă□AŽ©“@“l,ÉfAfCfRf“□ó'Ô,Ă<N“@,μ,½,Æ
,«,É□AfvfŠf“f^,ĂfGf%□[“□qŽž,ÉŽ©“@“l,ÉfEfbf“fhfE•\Žì,É□Ø,è'Ö,í,é,©,Ç,κ,©,ð'ì'ð,Ă,«,Ü,·□B

□mŽ©•ª,lfhflf...f□f“fg,ð^óü,μ,Ă,ç,È,ç,Æ,«□n,ì,Æ,«

□m^óü't,ÉfAfCfRf“,ĂŽ©“@<N“@,·,é□n,ª'ì'ð,³,è,½□ó'Ô,Ă□AŽ©“@“l,ÉfAfCfRf“□ó'Ô,Ă<N“@,μ,½,Æ
,«,É□AfvfŠf“f^,ĂfGf%□[“□qŽž,ÉŽ©“@“l,ÉfEfbf“fhfE•\Žì,É□Ø,è'Ö,í,é,©,Ç,κ,©,ð'ì'ð,Ă,«,Ü,·□B

n fGf%□[,ª%ð□œ,³,è,½□è□‡,í□AŽ©“@“l,ÉfAfCfRf“□ó'Ô,É-β,è,Ü,·□B

□mŽ©•ª,ìfhfLf...f□f“fg^óü't□n,ì,Æ,«

Ž©•ª,ìfhfLf...f□f“fg^óü't,É□AfGf%□□[,ª”□¶,μ,½,Æ,«,ÉŽ©“®“l,ÉfEfBf“fhfE□ó'Ô,Å<N“®,μ,Û,·□B

□mŽ©•ª,ìfhfLf...f□f“fg,ð^óü,μ,Ä,ç,È,ç,Æ,«□n,ì,Æ,«

Ž©•ª,ìfhfLf...f□f“fg^ÈŠO,ìfhfLf...f□f“fg^óü't,É□AfGf%□□[,ª”-

□¶,μ,½,Æ,«,ÉŽ©“®“l,ÉfEfBf“fhfE□ó'Ô,Å<N“®,μ,Û,·□B

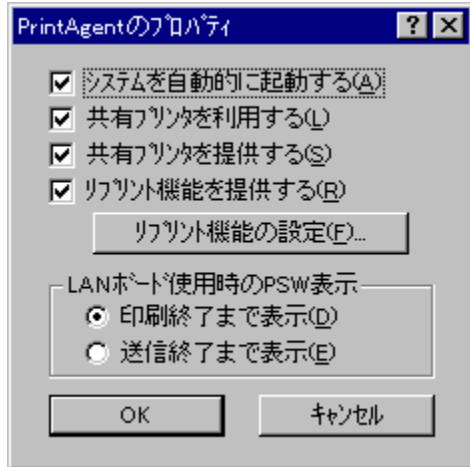
n fGf%□□[,ª%ð□œ,³,è,½□ê□‡,í□AŽ©“®“l,ÉfEfBf“fhfE,ð□l—¹,μ,Û,·□B

□mŽ©•ª,ìfhfLf...f□f“fg^óü't□n,ì,Æ,«
PSW,ìŽ©“@<N“@,đ□s,ç,Û,¹,ň□B
□mŽ©•ª,ìfhfLf...f□f“fg,đ^óü,μ,Ä,ç,È,ç,Æ,«□n,ì,Æ,«
PSW,ìŽ©“@<N“@,đ□s,ç,Û,¹,ň□B

PSW,đ<N“@,·,é,Æ,«,í□APrintAgentfAfcRf“,đ□¶fNfŠfbfN,μ,ÄfvfŠf“f^,đ'l'đ,·,é,©□A□mfXf^□[fg□nf□ffj...
□[,©,ç□mfvf□Of%of€□n□□mfvfŠf“f^<@Ží-¼□n,ì't,ì□A□mfvfŠf“f^fXfe□[f^fXfEfBf“fhfE□n,đfNfŠfbfN,μ,Ä,-
,¾,³,ç□B

PrintAgent,lfvf[]pfefB

PrintAgent,lfvf[]pfefB,Ä,í[]APrintAgent'S'ì,ÉŠÖ,.,é[]Ý'è,ð[]s,ì,Ü,·[]BPrintAgentfAfCfRf",ð%°EfnfŠfbfN,μ,Ä·\ Žì,³,è,é[]ffj...[][,©,ç[]mPrintAgent,lfvf[]pfefB[]n,ðfnfŠfbfN,·,é,±,Æ,ÅŠJ,,±,Æ,a,Å,«,Ü,·[]B ,²—,É,È,è,¼,ç[]€-Ü,ðfnfŠfbfN,μ,Ä,,¼,³,ç[]B



,²^°ó

n ,Žg,ç,É,È,Ä,Ä,ç,éfvfŠf" f^,É,æ,Ä,Ä,í[]A[]mfŠfvfŠf"fg<@"\,ð'ň<Ý,·,é[]n,Æ[]mfŠfvfŠf"fg<@"\ ,ì[]Ý'è[]nf{f^f"[]A,Ü,¼,í[]A[]mLANf{[]fhŽg—pŽž,ìPSW·\Žì[]n,í,²~—p,É,È,è,È,ç[]é[]#,a,è,Ü,·[]B,Žg,ç ,É,È,Ä,Ä,ç,éfrf"fsf...[]f^,É,»,è,¼,è,ì[]€-Ü,É'í%°ž,μ,Ä,ç,éfvfŠf" f^,ìPrintAgent,afCf" fXfg[]f<,³,è,Ä,ç ,é[]é[]#,í[]A,»,è,¼,è,ì[]€-Ü,í'í'ð%°Ä"\,É,È,è,Ü,·,ª[]A'í%°ž,μ,Ä,ç,É,çfvfŠf" f^,É'í,μ,Ä,í[]Ý'è,μ,¼[]€-Ü,í-³Ž<,³,è,Ü,·[]B[]Ü,μ,,í[]AfvfŠf" f^,ìft[]fU[]fYf}ffj...fAf<,ð,²—,É,È,é,©[]A,Žg,ç,É,È,Ä,Ä,ç ,éfvfŠf" f^,ìPSW,ìfwf<fv,ð,²ŽQ[]Æ,,¼,³,ç[]B

n []mfVfXfef€,ðŽ©" @ "l,É<N" @ ,·,é[]n,Æ[]m<α—LfvfŠf" f^,ð~—p,·,é[]n^ÈŠÖ,ì[]€-Ü,í[]AAdministrators,ìCE ÇÈ,a,è,éft[]fU,ì,Ý·ì[]X,Å,«,Ü,·[]B

ft□[fUf□fOfif“Žž,ÉPrintAgent,đŽ©“®“l,É<N“®,μ,Ü,·□B
n □Ý'è,μ,½“à—e,í□AŽŸ%oň,ìft□[fUf□fOfif“Žž,©,ç—LÆø,Æ,È,è,Ü,·□B
n ,±,ì□€-Ú,ì□Ý'è“à—e,ìft□[fU,²,Æ,É•Û'¶,³,é,Ü,·□B

fifbfjgf[]fN<α—LfvfŠf“f^,Å[]APSW[]AfŠf.[]fjgfpfjf<,ª—~—p,Å,«,é,æ,ϣ,É,È,è,Û,·[]B
n ,±,ì[]€-Ú,ì[]Ý’è“à—e,Íf+[]fU,²,Æ,É•Û’¶,³,ê,Û,·[]B

,²’^Ó

n -{[]€-Ú,ªf`fFfbfN,³,ê,Ä,ç,È,ç[]ê[]‡,Í[]Afifbfjgf[]fN<α—LfvfŠf“f^,É’Í,µPSW[]AfŠf,[]fjgfpfjf<,ª,²—~—
p,É,È,è,Û,¹,ñ[]B,Û,½[]A,“Žg,ç,É,È,Á,Ä,ç,éRf“fsf...[]f^,Éfifbfjgf[]fN,ªfCf“fXfg[]f<,³,ê,Ä,ç,È,ç[]ê[]‡,É,Í[]A-
{[]€-Ú,Í,²—~—p,É,È,è,Û,¹,ñ[]B

Ž©•ª,ìfRf“fsf...[]f^,ÉÚ'±,³,ê,Ä,ç,éPrintAgent'î%žvfšf“f^,ðfìfbfgf[][]fN<α—Lfvfšf“f^,Æ,μ,Ä'¼,ìfRf“fsf...
[]f^,É'í,μ,Ä'ñ<ÿ,μ,Ä,ç,éê±,ÉA,»è,ç,ì'¼,ìfRf“fsf...[]f^[]ã,ìPrintAgent,É'í,μ,ÄA<α—
Lfvfšf“f^,É'í,·,éî•ñ,Ö,ìfAfNfZfX,ð<-%oÄ,μ,Ü,·B

n ,±,ì€-Ú,ðf fFfbfN,·,é,ÆA'¼,ìfRf“fsf...[]f^[]ã,ÅPSW,ª,²—~—p,É,È,è,Ü,·B,Ü,½A'¼,ìfRf“fsf...
[]f^[]ã,Åšf,[]fgfpfìf<,É,æ,èvfšf“f^,ìÿ'è,ð“Ç,ÿž,þ,±,Æ,ªo—^,é,æ,α,É,È,è,Ü,·B

n ,±,ì€-Ú,íA,±,ìfRf“fsf...[]f^,ì'Sft[]fU,É—LCEø,Å,·B,±,ì€-Ú,ð•ìX,Å,«,é,ì,ìfvfšf“f^,ìfAfNfZfXCE ,ÅAdm
inistratorsCE CEÀ,ðž,Åft[]fU,ì,ÿ,Å,·B

,²'°Ó

n -{[]€-Ú,ªf fFfbfN,³,ê,Ä,ç,éê±[]Afìfbfgf[][]fN<α—Lfvfšf“f^,ð'ñ<ÿ,·,éRf“fsf...
[]f^,ìWindows,ìf[]Ofìf“%æ-É•Ž!'+[]ift[]fU,ªf[]Ofìf“,μ,Ä,ç,È,çŠÖj,Å,àPrintAgent,ì<@“\
,·,é,½,βA'¼,ìfRf“fsf...[]f^,©,ç,àfAfNfZfX,ª%Ä“\,Å,·B

n ,“Žg,ç,É,È,Ä,Ä,ç,éRf“fsf...[]f^,Éfìfbfgf[][]fN,ªfCf“fXfg[]f<,³,ê,Ä,ç,È,çê±,É,íA-{[]€-Ú,ì,²—~—
p,É,È,è,Ü,¹,ñB

Ž©•ª,ìfRf“fsf...[]f^,ÉÚ±³,ê,Ä,ç,éPrintAgent‘í%žvfšf“f^,Åfšvfšf“fg<@“\,ðŽg—p,μ,Û,·□B
n ,±,ì□€-Ú,ì□Ý’è“à—e,í□A,±,ìfRf“fsf...[]f^,ì’Sft□[]fU,É—LCEø,Å,·□B,±,ì□€-Ú,í□AAdministrators,ìCE CEÀ,ª, ,
éft□[]fU,ì,Ý□Ý’è•ì□X%oÅ“\,Å,·□BCE CEÀ,ª,È,çft□[]fU,Å,íOfCE□[],É,È,èŽg—p,Å,«,,È,Ä,Ä,ç,Û,·□B

,²’□^Ó

n -{□€-Ú,ìŽ©•ª,ìfRf“fsf...[]f^,É¼□Ú□Ú±³,ê,Ä,ç,évfšf“f^,É’í,·,é□Ý’è,Å, ,è□Afìfbfgf□□[]fN<α—
Lfvfšf“f^,É’í,·,é,à,ì,Å,í, ,è,Û,¹,ñ□B

n -{□€-Ú,ªf^fffbfN,³,ê,Ä,ç,Ä,à□Afìfbfgf□□[]fN<α—Lfvfšf“f^,Ö,ì^ó□ü,Å,ìfT□[]fo,ì□Ý’è,ª—
LCEø,Æ,È,è,Û,·□Bfšvfšf“fg<@“\,ðfìfbfgf□□[]fN<α—Lfvfšf“f^,ÅŽg—
p,μ,½,ç□é□‡,í□AfT□[]fo□ã,ì□Ý’è,ð,²Sm“F,,¾,³,ç□B

n ,“Žg,ç,É,È,Ä,Ä,ç,évfšf“f^,É,æ,Ä,Ä,í□A-{□€-Ú,í,²—~—p,É,È,è,È,ç□é□‡,ª, ,è,Û,·□B,“Žg,ç,É,È,Ä,Ä,ç
,éRf“fsf...[]f^,É,±,ì□€-Ú,É’í%ž,μ,Ä,ç,évfšf“f^,ìPrintAgent,ªfCf“fXfg□[]f<,³,ê,Ä,ç,é□é□‡,í’ð%oÅ“\
,É,È,è,Û,·,ª□A’í%ž,μ,Ä,ç,È,çvfšf“f^,É’í,μ,Ä,í□Ý’è,μ,½□€-Ú,í-³Ž<,³,è,Û,·□B□Ú,μ,-
,í□Afvfšf“f^,ìft□[]fU□[]fYf}ffj...fAf<,ð,²—,É,È,é,©□A,“Žg,ç,É,È,Ä,Ä,ç,évfšf“f^,ìPSW,ìfwf<fv,ð,²ŽQ□Æ,-
,¾,³,ç□B

fšvfšf“fg,ÉŠÖ,μ,ÄAfXfv□[f<ftf@fCf<,ì§CEÀ•û-@AfXfv□[f<ftf@fCf<,đŠi”[.,.éftfHf<f_,đ□Ý’è,μ,Û,·□B
n ,±,ì□€-Ú,ì□Ý’è“à—e,í□A,±,ìfRf“fsf...□[f^,ì’Sft□[fU,É—LCEø,Å,·□B,±,ì□€-Ú,ì□AAdministrators,ìCE CEÀ,a, ,
éft□[fU,ì,Ý□Ý’è•ì□X%oÅ“\,Å,·□B

,²’□^Ó

n ,“Žg,ç,É,È,Á,Ä,ç,évfšf“f^,É,æ,Á,Ä,í□A-{□€-Ú,í,²—~—p,É,È,è,È,ç□é□#,a, ,è,Û,·□B,“Žg,ç,É,È,Á,Ä,ç
,éRf“fsf...□[f^,É,±,ì□€-Ú,É’í%ož,μ,Ä,ç,évfšf“f^,ìPrintAgent,açf“fXfg□[f<,³,è,Ä,ç,é□é□#,í’í’đ%oÅ“\
,É,È,è,Û,·,ª□A’í%ož,μ,Ä,ç,È,çvfšf“f^,É’í,μ,Ä,í□Ý’è,μ,½□€-Ú,í-³Ž<,³,è,Û,·□B□Ú,μ,-
,ì□Afvšf“f^,ìft□[fU□[fYf}ffj...fAf<,đ,²—,É,È,é,©□A,“Žg,ç,É,È,Á,Ä,ç,évfšf“f^,ìPSW,ìfwf<fv,đ,²ŽQ□Æ,-
,³/4,³,ç□B

LANf{[fh□i*1□jŽg—pŽž,ìPSW,ì•\Žì,đ^óüü□—¹,Ü,Å•\Žì,É,.,é,©'—□M□I—¹,Ü,Å•\Žì,É,.,é,©,đ□Ý'è,μ,Ü,·□B
n -{□€-Ú,íLANf{[fh'¼CE<,ífvfŠf“f^,É'í,μ,Ä—LCEø,Ä, ,è□Aft□[foCEo—R,ÅLANf{[fhCEo—R,Å□Ú'±
,³,è,½fvfŠf“f^,É'í,μ,Ä,í□Aft□[fo□ä,Ä,ì□Ý'è,^a—LCEø,Æ,É,è,Ü,·□B
n ,“Žg,ç,É,È,Á,Ä,ç,éfvfŠf“f^,É,æ,Á,Ä,í□A-{□€-Ú,í,²—~—p,É,È,è,È,ç□è□#,^a, ,è,Ü,·□B,“Žg,ç,É,È,Á,Ä,ç
,éRf“fsf...□[f^,É,±,ì□€-Ú,É'í%ž,μ,Ä,ç,éfvfŠf“f^,ìPrintAgent,šCf“fXfg□[f<,³,è,Ä,ç,é□è□#,í'í'ð%oÁ“\
,É,È,è,Ü,·^a□A'í%ž,μ,Ä,ç,È,çfvfŠf“f^,É'í,μ,Ä,í□Ý'è,μ,½□€-Ú,í-³Ž<,³,è,Ü,·□B□Ú,μ,-
,í□AfvfŠf“f^,ìft□[fU□[fYf}ffj...fAf<,ð,²—,É,È,é,©□A,“Žg,ç,É,È,Á,Ä,ç,éfvfŠf“f^,ìPSW,ìfwf<fv,ð,²ŽQ□Æ,-
,³/₄,³,ç□B

***1CE^{-1/4}□FPC-PR-L01, PC-PR-L02**

LANf{[fh□i*1□],Æ,ì'É□M,ð□A^ó□ü□«"\\—D□æ,Å□s,ç,Û,·□B, ,é□l,ì^ó□üfhhfLf...
f□f"fg"rŽ††,É'¼,ì□l,ì^ó□üfhhfLf...f□f"fg,ð'—□M,Å,«,é,æ,æ,É,È,è□A•j□",ì^ó□üfhhfLf...
f□f"fg,æ'¶□Y,·,é,Æ,«,É□A,·,×,Ä,ìfhhfLf...f□f"fg,ì^ó□üš@—¹,æ'¬,,È,è,Û,·□B

,²'□^Ó

n ,±,ì□Y'è,É,·,é,Æ□APSW,Å,ì^ó□ü'tfhhfLf...f□f"fg□î•ñ,ì-¼□□A□š—L□Aš@—¹fy□□fW,í•\
Ž,³,è, □A"rŽ††Ajjf□□[fVf†",à□s,í,è,Û,¹,ñ□B,Û,½□m^ó□ü□Ú□×□nf_fCfAf□fOf{fbfNfX,ì□m□ó'Ô□n,í,»,ìfhhfLf
...f□f"fg,æ^ó□ü†,Ä, ,Ä,Ä,à□u^ó□ü'Ò□v,Æ•\Ž,³,è,Û,·□B

n , Žg,ç,É,È,Ä,Ä,ç,éfvfšf" f^,É,æ,Ä,Ä,í□A-{□€-Ú,í,²~—p,É,È,è,È,ç□è□†,æ, ,è,Û,·□B, Žg,ç,É,È,Ä,Ä,ç
,éRf"fsf...□[f^,É,±,ì□€-Ú,É'í%ž,μ,Ä,ç,éfvfšf" f^,ìPrintAgent,æCf" fXfg□[f<,³,è,Ä,ç,é□è□†,í'ð%Å"\
,É,È,è,Û,·,æ□A'í%ž,μ,Ä,ç,È,çfvfšf" f^,É'í,μ,Ä,í□Y'è,μ,½□€-Ú,í-³Ž<,³,è,Û,·□B□Ú,μ,-
,í□Afvfšf" f^,ìf†□[fU□[fYf}fj...fAf<,ð,²—,É,È,é,©□A, Žg,ç,É,È,Ä,Ä,ç,éfvfšf" f^,ìPSW,ìfwf<fv,ð,²ŽQ□Æ,-
,¾,³,ç□B

*1€^=¼□FPC-PR-L01, PC-PR-L02

LANf{[fh□i*1□],Æ,ì'É□M,ð□AfXfe□[f^fXŽæ“¾—D□æ,Å□s,ç,Ü,·□BPSW,Å,ì•\
Ž,í□Af□□[ff<fvfŠf“f^,âfjfbfgf□□[fN<α—LfvfŠf“f^,ðŽg—p,μ,½□ê□#,Æ'S,“~,¶,É,È,è□A^óü'tfhfLf...
f□f“fg□î•ñ,ì-¼□□A□Š—L□AŠ@—!fy□[fW,â•\
Ž,³,è□A“rŽtfAfj□□[fVf#f“,à□s,í,è,Ü,·□B,Ü,½□m^óü□Ú□×□nf_fCfAf□fOf{fbfNfX,ì□m□ó'Ô□n,à□³Šm,É•\
Ž,³,è,Ü,·□B

,²'□^Ó

n ,±,ì□Ý'è,É,·,é,Æ□A, ,é□,ì^ó□üfhfLf...f□f“fg“rŽt't,É,í'¼,ì□,ì^ó□üfhfLf...f□f“fg,í'—
□M'Ö,É,È,è,Ü,·□B•;□”,ì^ó□üfhfLf...f□f“fg,³¶□Ý,·,é,Æ,«,É□A,·,×,Ä,ìfhfLf...f□f“fg,ì^ó□üŠ@—¹,²'x,,È,è,Ü,·□B
n ,“Žg,ç,É,È,Á,Ä,ç,éfvfŠf“f^,É,æ,Á,Ä,í□A-{□€-Ú,í,²—~—p,É,È,è,È,ç□ê□#,², ,è,Ü,·□B, “Žg,ç,É,È,Á,Ä,ç
,éfRf“fsf...□[f^,É,±,ì□€-Ú,É'í%ž,μ,Ä,ç,éfvfŠf“f^,ìPrintAgent,²fCf“fXfg□[f<,³,è,Ä,ç,é□ê□#,í'í'ð%Á\
,É,È,è,Ü,·,²□A'í%ž,μ,Ä,ç,É,çfvfŠf“f^,É'í,μ,Ä,í□Ý'è,μ,½□€-Ú,í-³Ž<,³,è,Ü,·□B□Ú,μ,-
,í□AfvfŠf“f^,ìft□[fU□[fYf}fj...fAf<,ð,²—,É,È,é,©□A, “Žg,ç,É,È,Á,Ä,ç,éfvfŠf“f^,ìPSW,ìfwf<fv,ð,²ŽQ□Æ,-
,¾,³,ç□B

***1□€^¾□FPC-PR-L01, PC-PR-L02**

PrintAgent, ðŀ—¹

PrintAgentfAfCfRf“, ð%EfNfŠfbfN, µ, Ä•\Ži, ³, ê, éfŀffj...ŀ[, ©, çŀmPrintAgent, ðŀ—¹ŀn, ðfNfŠfbfN, ·, é, ±, Æ, ÅŀAPrintAgent, ðŀ—¹, ·, é, ±, Æ, Å, Å, «, Ü, ·ŀB

n PrintAgent, ðŀ—¹, ·, é, ÆŀAPSW, Å, ²—~—p, Å, «, È, È, è, Ü, ·ŀB

n PrintAgent, ðŀ—¹, µ, ½ŀêŀ‡, ÍŀAŀmfXf^ŀŀ[fgŀnfŀffj...ŀ[, ©, çŀmfvfŀfŀOf%ŀfŀnŀŀmfvfŀŠf“f^<@Ži-¼ŀn, ì't, ìŀAŀmPrintAgentfVfXfef€<N“®ŀn, ðfNfŠfbfN, ·, é, ±, Æ, Å<N“®, Å, «, Ü, ·ŀB

n PrintAgent, ðŀ—¹, µ, ½, , Æ, Å, àŀAfŠf, ŀŀfgfpŀfŀf<, âfvfŠf“f^fXfeŀŀf^fXfEfBf“fhfE, ð<N“®, µ, ½, èŀAfvfŠf“f^fhf%ŀfCfo, ìfvfŀŀpfefB, È, Ç, ðŠj, ç, ½, è, ·, é, ÆPrintAgent, ÍŽ©“®“l, È<N“®, µ, Ü, ·ŀB

ŽQŀÆ

[PrintAgent, ð<N“®](#)

[PrintAgent, Å<N“®, µ, Ä, ç, È, çŀêŀ‡, ð<@“\](#)

[PrintAgent, ÈŠÖ, ·, éNT, ìfTŀŀfŀfX, ð<N“®ŀA'âŽ~](#)

fšfvfšf“fg<@”\,É,Â,ç,Ä

fšfvfšf“fg<@”\,íA,·,Å,É^óü,μ,½fhfLf...f“fg,ðfAfvfšfP[fVf#f“,ð<N“@,·,é,±,Æ,È,‘Ç
%oÁ^óü,μ,½,èA·”·žw’è^óü,μ,½,è,·,éA^óü<@”\,ð’ñ<ÿ,μ,Ü,·Bfšfvfšf“fg,ð—
LCEø,É,·,é,ÆA^óüfhfLf...f“fg,³fn[fhffBfXfNã,É·Ú‘¶,³,é,é,ì,ÅA%½“x,Å,àÄ^óü,Å,«,Ü,·B

,±,ñ,Èžž,É·Ö—,È<@”\,Å,·B

n

·i“”“”,ð^óü,μ,½,çžž,É,P·”,¾,~žž,μ^óü,ðs,çA^óüCE<%oÉ,ðšm“F,μ,Ä,©,çžc,è,ì·””,ì^óü,ðs,α
é#B

n ^è“x^óü,ðs,Á,ÄfAfvfšfP[fVf#f“,ð|—¹,μ,Ä,μ,Ü,Á,½,³ACEã,Å^ç%Á^óü,·,é·K—v,³o,Ä,«,½ê#B

ŠÖ~A€-Ú

[fšfvfšf“fg<@”\,ð’ñ<ÿ,·,é](#)

[fšfvfšf“fg<@”\,ìÿ’è](#)

fšfvfšf“fg<@”\,lžg,č,©,½

fšfvfšf“fg<@”\,l,²—~—p,í^È%º,ìžè□‡,Á□s,č,Ü,·□B

,P□,S,ìžè□‡,đ, ,ç,©,¶,ß□s,Á,Ä,,¾,³,č□B1“x□Ý’è,;ê,í□AŽŸ%ñ,©,ç,ìžè□‡,T^È□~,đ□s,±,±,Æ,É,æ,è□Ašfvfšf“fg,đ,²—~—p,č,½,¾,̄,Ü,·□B

fłbfğf□□[fN<α—Lfvfšf“f^,É^óü,.,é□è□‡,í□A,P□` ,S,ìžè□‡,đfT□[fofRf“fsf...[f^□ã,Á□s,Á,Ä,,¾,³,č□B

- 1 PrintAgentfAfCfRf“ ,đ%ºEfnfšfbfN,μ,Ä•\Ž,³,ê,éf□fj...□[,©,ç□mPrintAgent,łfvf□fpfefB□n,đ’l’đ,μ,Ü,·□B
- 2 □mfšfvfšf“fg<@”\,đ’ñ<Ÿ,.,é□n,đf`fFfbfN,μ,Ü,·□B
- 3 □mfšfvfšf“fg<@”\,l□Ý’è□nf{f^f“ ,đfNfšfbfN,μ,Ä□mfšfvfšf“fg<@”\ ,l□Ý’è□nf`fCfAf□Of{fbfNfX,đšJ,«□AŠe□€- Ú,đ□Ý’è,μ□A□mOK□nf{f^f“ ,đfNfšfbfN,μ,Ü,·□B□i□mfXfv□[f<ftf@fCf<,đšI“[.,éftfHf<f_],í^óüfhfLf... f□f“fg,đ•Ú¶,μ,Ü,.,ì,Á□A<,«—e—É,²□•²,É, ,é,©,²Šm“F,ì□ã□Ý’è,μ,Ä,,¾,³,č□B□j
- 4 □mPrintAgent,łfvf□fpfefB□nf`fCfAf□Of{fbfNfX,ì□mOK□nf{f^f“ ,đfNfšfbfN,μ,Ü,·□B
- 5 fAfvfšfP□[fVf‡f“ ,Á^óüfhfLf...f□f“fg,đ□i□—,μ,Ü,·□B
- 6 fAfvfšfP□[fVf‡f“□ã,łfvfšf“f^fhf%ºfCfo,łfvf□fpfefB,Á□mfšfvfšf“fg<@”\,đžg— p,.,é□n,đf`fFfbfN,μ□A^óü,đ□s,č,Ü,·□B
- 7 PSW,Á□mfhfLf...f□f“fg□nf□fj...□[,đfNfšfbfN,μ□A□mfšfvfšf“fg<@”\□n,đ’l’đ,μ,Ü,·□B
- 8 □mfšfvfšf“fg<@”\□nf`fCfAf□Of{fbfNfX,²•\Ž,³,ê,Ü,·□Bšfvfšf“fg,đ□s,xfhfLf...f□f“fg- ¾□A•“□” ,É,Ç,đžw’è,μ,Ü,·□B
- 9 □m^óü□nf{f^f“ ,đfNfšfbfN,.,é,Æfšfvfšf“fg,đšJžn,μ,Ü,·□B

fqf“fg

n ,.,Á,Éšfvfšf“fg,đ□s,xfhfLf...f□f“fg,²—p^Ó,³,é,Ä,č,é□è□‡,í□A,V^È□~ ,đžÀ□s,μ,Ä,,¾,³,č□B

,²’□^Ó

n AdministratorsCE CEÀ,²,É,čft□[fU,í□A□ã,ì,□□` ,R,ìžè□‡,í□s,ì,Ü,¹,ñ□B□mfšfvfšf“fg<@”\ ,đ’ñ<Ÿ,.,é□n,²f`fFfbfN,³,é,Ä,č,É,č□è□‡,łšfvfšf“fg<@”\,²—~—p,É,É,é,Ü,¹,ñ□BŠÇ—□žÒ,É,²’Š’k,,¾,³,č□B

n ,”žg,č,É,É,Á,Ä,č,éfvfšf“f^,É,æ,Á,Ä,í□Ašfvfšf“fg<@”\,²—~—p,É,É,é,É,č□è□‡,², ,è,Ü,·□B□Ú,μ,- ,í□Ašfvfšf“f^,ìft□[fU□[fYf}fj...fAf<,đ,²—,É,É,é,©□A,“žg,č,É,É,Á,Ä,č,éfvfšf“f^,ìPSW,łfwf<fv,đ,²žQ□Æ,- ,¾,³,č□B

ŠÖ~A□€-Ú

- [PrintAgent,łfvf□fpfefB](#)
- [fšfvfšf“fg<@”\,É,Á,č,Ä](#)
- [fšfvfšf“fg<@”\,l□Ý’è](#)

fvfŠf“f^fhf%ofCfofwf·fv

fvfŠf“f^ftfHf<f_ , © , ç , ² — ~ — p , É , È , è , ½ , † fvfŠf“f^ , ð ' l ' ð , μ □ A fhf % of Cfo , lfvf □ fpfefBfV □ [fg , ð Š J , ‹ □ A , » , ± , © , ç Ž Q □ Æ , μ , Ä , , ¾ , ¾ , † □ B

fšfvfšf“fg<@”\,ì□Y’è

fšfvfšf“fg<@”\,ì□Y’è,δ□s,ì,Ü,·□B□mPrintAgent,ìfvf□fpfefB□n,©,ç□mfšfvfšf“fg<@”\
,ì□Y’è□nf{f^f”,δfNfšfbfN,·,é,±,Æ,Åšj,,±,Æ,³,Å,«,Ü,·□B
,²—,É,È,è,½,ç□€-Ü,δfNfšfbfN,μ,Ä,,¾,³,ç□B

fXfv[]f<ftj@fCf<,i•Ù'¶,ð[]sCEÀ,·,é•ù-@,ð[]Ý'è,μ,Ü,·[]B

n ^É%º,ì3,Â,ì[]€-Ú,Â[]A1,Â,Â,à[]ðCE[],É'B,·,é,ÆCEÃ,†^ó[]üfhfLf...f[]f“fg,©,ç[]#,É[]í[]œ,³,ê,Ü,·[]B

, ±, ì € - Ú, ð f` fFfbfN, ., é, Æ □ AfŠ fvfŠ f“fg, ì, ½, ß, Éfn □ [fhfffBfXfN, É • Û ‘ ¶, ³, ê, ½ ^ ó □ üfhfLf...
f□“fg, ì □”, ð fefLfXfgf{fbfNfX, Å □ Ý ‘ è, ³, ê, ½ ‘ l, ð ‘ ‘, ì, ½, Æ, «, É CE Æ, ç ^ ó □ üff □ [f ^, ©, ç □ ‡, É □ í □ œ, ³, ê, Û, . □ B
• Û ‘ ¶, ., é ^ ó □ üfhfLf... f□“fg, ì □”, í 1 □ ` 100 CE Æ, Å, . □ B

fqf“fg

n , ±, ì € - Ú, ð f` fFfbfN, µ, Æ, ç, È, ç □ é □ ‡ □ AfhfLf... f□“fg □”, í □ Å ‘ å □ i 100 CE Æ □ j, É, È, è, Û, . □ B

, ±, ì € - Ú, ð f` fFfbfN, ., é, Æ AfSf v fSf` fg, ì, ½, ß, Éfn [fhfffBfXfN, É • Ú' ¶, ³, è, ½ ^ ó üfhfLf...
f` fg, ì • Ú' ¶ ŽžŠÔ, ¶ fefLfXfgf{fbfNfX, Å ¶ Ý' è, ³, è, ½ ŽžŠÔ, ð' ', ½, Æ, «, É, » , ì ^ ó üff [f ^, ð í ¶ œ, µ, Ü, · ¶ B
^ ó üfhfLf... f` fg, ì • Ú' ¶ ŽžŠÔ, í ¶ ` 120 ŽžŠÔ, Å, · ¶ B

f q f` f g

n , ±, ì € - Ú, ð f` fFfbfN, µ, Ä, ç, È, ç ¶ é ¶ # ¶ A — L Ç ø Š ú Ç È À, í ¶ Å' å ¶ i 120 ŽžŠÔ ¶ j, É, È, è, Ü, · ¶ B

fXfv[]f<ftf@fCf<,đŠi"l,·,éftfHf<f_ìŸ'è,đ[]s,ç,Ü,·[]B

«»ŸŸ'è,³ê,Ä,ç,éfXfv[f<ftf@fCf<,ďŠi"[.,.éftfHf<f_Å,·B

«»ŸŸ'è,³ê,Ä,ç,éfXfv□[f<ftf@fCf<,đŠi"[.,.éftfHf<f_̀,̀ó,«—e—Ê,Å,·□B

fšfvfšf“fg, ì, ½, ß, É•Ù’¶,³,ê,Ä,ç,éfxfv[]f<ftf@fCf<,ð,·,×,Äí[]œ,μ,Ü,·[]B

fqf“fg

n ,±,ìf{f^f“,Í[]A ftfHf<f_Éfxfv[]f<ftf@fCf<,²-³,ç[]ê[]‡,Í-³Eø,É,È,Á,Ä,ç,Ü,·[]B

fXfv[]f<ftf@fCf<,đŠi”[.,.éftfHf<f_.,ì•ï[]X,đ[]s,ç,Ü,·[]B

,²’[]^Ó

n ‘í’đ,Å,«.,éftfHf<f_.,íĀĀ’èfffBfXfN,ì,Ý,Ā[]Aflfbfgf[][]fN,âfŠf€[][]fuf<fhf%ofCfu,í‘í’đ,Å,«.,Ü,¹,ñ[]B

fvfŠf“f^,ìfAfNfZfXŒ ,Æ,²—~—p,É,È,ê,éft□[fefBfŠfefB

,²Žg—p,É,È,Á,Ä,č,éfRf“fsf...□[f^,ìOS, fvfŠf“f^,ª¼□Ú,Â,È,ª,Á,Ä,č,éfRf“fsf...

□[f^,ìOS,âfvfŠf“f^,ìfAfNfZfXŒ ,É,æ,Á,Ä□AfvfŠf“f^fXfe□[f^fXfEfBf“fhfE□AfŠf.□[fgfpf|f<,ì,.,x,Ä,ì<@“\,ð,²—
—p,É,È,ê,È,č□è□‡,ª, ,è,Ü,·□B

ŽQ□Æ

[fvfŠf“f^fXfe□\[f^fXfEfBf“fhfE,ìfZfLf...fŠfefB](#)

[fŠf.□\[fgfpf|f<,ìfZfLf...fŠfefB](#)

□Ý'è,ð—LŒø,É,μ□Af_fCfAf□fOf{fbfNfX,ð•Â,¶,Ü,·□B

□Ý'è,ð-³Œø,É,μ□Af_fCfAf□fOf{fbfNfX,ð•Â,¶,Ü,·□B

PrintAgent,lfwf{fv,đ•Žl,μ,Ü,·□B

f^fXfe[]f^fXfEfBf"fhfE,lfvf[]fpfefB,đ•\
Ž!,μ,Ü,·[]BfvfŠf"f^fXfe[]f^fXfEfBf"fhfE,ìŽ©"®<N"®,ì[]Ý'è,²[]s,!,Ü,·[]B

PrintAgent,lfvf[]pfefB,ð•\Ži,μ,Ü,·[]BPrintAgent,ìŽ©“®<N“®,ì[]Ý’è,â[]APrintAgent,Å,lfjfbfgf[][]fN<¤—
LfvfŠf“f^,ì—~—p[]A’ñ<Ÿ,ì[]Ý’è,“,æ,ÑfŠfvfŠf“fg,ì[]Ý’è,È,Ç,ª[]s,ì,Ü,·[]B

PrintAgent, ĺfo [fWf†f“ □î•ñ,đ•\Žı,μ,Ü,·□B

PrintAgent,δ□I—¹,μ,Ü,·□B

fšfXfg, ©, cfvfšf“f^fXfe□lf^fXfEfBj“fhfE, ìŸ'è'îŸ, Æ, È, éfvfšf“f^, ð'! 'ð, μ, Û, ·□B

f v f S f " f ^ f X f e [f ^ f X f E f B f " f h f E , ì ' î Ñ Ò , Æ , È , é f v f S f " f ^ , ð ' l ' ð , μ , Û , · Ñ B

fZfLf...fŠfefB

,²—,É,È,è,½,¢fZfLf...fŠfefB,ìŽí—p,ðfNfŠfbfN,μ,Ä,,¾,¾,¾,¢□B

{button ,JI(`Pan4.HLP',`IDH_PA_HIGH_SECURITYPSW') } fvfŠf“f^fXfe□[f^fXfEfBf“fhfE,ìfZfLf...fŠfefB

{button ,JI(`Pan4.HLP',`IDH_PA_HIGH_SECURITYRP') } fŠf.□[fgfpflf<,ìfZfLf...fŠfefB

{button ,JI(`Pan4.HLP',`IDH_PA_HIGH_SECURITYREPRINT') } fŠfvfŠf“fg,ìfZfLf...fŠfefB

fvfŠf“f^fXfe[]f^fXfEfBf“fhfE,lfZfLf...fŠfefB

^ó[]úfhfLf...f[]“fg’—[]M’t,[]AfhfLf...f[]“fg,[]èŽž’âž~[]A[]ÄŠJ,“,æ,Ñ[]í[]œ,É,Ä,ç,Ä,lfZfLf...
fŠfefB,É,æ,Ä,ÄŠe[]ê[]‡,²,Æ,É[]A,²~—p,É,È,é,é<@“\,ªCEÄ,ç,é,Ä,ç,Ü,·[]B

PSW[]ã,©,ç,lfhfLf...f[]“fg,[]èŽž’âž~[]A[]ÄŠJ,“,æ,Ñ[]í[]œ,[]í[]Ü,Æ,È,é,ì,[]A’—[]M’t,[]^ó[]úfhfLf...
f[]“fg,[]ì,Ý,Ä,·[]B

%½,è,ì[]ê[]‡,à[]AWindows NT,Ä,lfZfLf...fŠfefB,É,æ,èfhfLf...f[]“fg,[]èŽž’âž~[]A[]ÄŠJ,[]í,Ä,«,Ü,¹,ñ[]B

‡@f[][]fj[]fvfŠf“f^,[]è[]ê[]‡,Ü,½,[]ŠeŽíLANf{[]f[]h[]i[]LANfAf_fvf^[]j,[]øCEo—R,μ,Ä^ó[]ü,μ,Ä,ç,é[]ê[]‡
’É[]í[]AfhfLf...f[]“fg,[]í[]œ,[]í,Ä,«,Ü,·(*1)[]B^èŽž’âž~,“,æ,Ñ[]ÄŠJ,[]í,Ä,«,Ü,¹,ñ[]B

‡Af[]fbfgf[][]fN<α—LfvfŠf“f^,[]è[]ê[]‡

f[]fbfgf[][]fN<α—LfvfŠf“f^,[]ÁPSW,ð—~—p,·,é[]ê[]‡,É,[]A,Ü,·fT[]f[]ofRf“fsf...[]f^‘α
,[]mPrintAgent,[]lfvf[]pfefB[]n[][]m<α—LfvfŠf“f^,[]ð’ñ<Ý,·,é[]nf`fFfbfNf{fbfNfX,Æ[]AfNf
%[]ofCfAf“fgfRf“fsf...[]f^‘α,[]mPrintAgent,[]lfvf[]pfefB[]n[][]m<α—LfvfŠf“f^,[]ð—~—
p,·,é[]nf`fFfbfNf{fbfNfX,ª[]A,Æ,à,Éf`fFfbfN,³,é,Ä,ç,é,±,Æ,ª’O’ñ,Æ,È,è,Ü,·Bf[]fbfgf[][]fN<α—
LfvfŠf“f^,É,Ä,ç,ÄPSW,ð—~—p,·,é,Æ,«,[]Aft[]fU,ªf[]Of[]f“,μ,Ä,ç,é[]Nf%[]ofCfAf“fgfRf“fsf...
[]f^,[]IOS,[]ží—p,É,©,©,ì,ç,·[]AfvfŠf“f^,ª¹¼[]Ü[]‘±,³,é,Ä,ç,é[]T[]f[]ofRf“fsf...[]f^,[]IOS,[]ží—
p,É,æ,Ä,Ä[]AfZfLf...fŠfefB,[]žæ,è^μ,ç,ª·ì,í,è,Ü,·[]B

[]mfT[]f[]ofRf“fsf...[]f^,[]IOS,ªWindows 95,[]è[]ê[]‡[]n

fNf%[]ofCfAf“fgfRf“fsf...[]f^‘α
Ž©·ª,[]fhfLf...f[]“fg,Éí,μ,Ä[]A[]í[]œ,Ä,«,Ü,·[]B^èŽž’âž~[]A[]ÄŠJ,[]í,Ä,«,Ü,¹,ñ[]B
¹¼[]l,[]fhfLf...f[]“fg,Éí,μ,Ä[]A^èŽž’âž~[]A[]ÄŠJ,“,æ,Ñ[]í[]œ,[]í,Ä,«,Ü,¹,ñ[]B
fT[]f[]ofRf“fsf...[]f^‘α
Ž©·ª,[]fhfLf...f[]“fg,Éí,μ,Ä[]A^èŽž’âž~[]A[]ÄŠJ,“,æ,Ñ[]í[]œ,ª,Ä,«,Ü,·[]B
¹¼[]l,[]fhfLf...f[]“fg,Éí,μ,Ä[]A^èŽž’âž~[]A[]ÄŠJ,“,æ,Ñ[]í[]œ,ª,Ä,«,Ü,·[]B

[]mfT[]f[]ofRf“fsf...[]f^,[]IOS,ªWindows NT,[]è[]ê[]‡[]n

fNf%[]ofCfAf“fgfRf“fsf...[]f^‘α
Ž©·ª,[]fhfLf...f[]“fg,Éí,μ,Ä[]A’É[]í[]œ,Ä,«,Ü,·[]i*1[]j[]B^èŽž’âž~[]A[]ÄŠJ,[]í,Ä,«,Ü,¹,ñ[]B
¹¼[]l,[]fhfLf...f[]“fg,Éí,μ,Ä[]A^èŽž’âž~[]A[]ÄŠJ,“,æ,Ñ[]í[]œ,[]í,Ä,«,Ü,¹,ñ[]i*2[]j[]B
fT[]f[]ofRf“fsf...[]f^‘α
Ž©·ª,[]fhfLf...f[]“fg,Éí,μ,Ä[]A’É[]í[]œ,Ä,«,Ü,·[]i*1[]j[]B^èŽž’âž~[]A[]ÄŠJ,[]í,Ä,«,Ü,¹,ñ[]B
¹¼[]l,[]fhfLf...f[]“fg,Éí,μ,Ä[]A^èŽž’âž~[]A[]ÄŠJ,[]í,Ä,«,Ü,¹,ñ[]B[]í[]œ,É,Ä,ç
,Ä,[]fvfŠf“f^,[]fAfNfZfXCE ,É,æ,Ä,Ä^Ü,È,è,Ü,·[]B[]i*3[]j

*1’É[]í[]ACREATOR OWNER,[]fAfNfZfXCE ,[]ží—p,ª[]A[]m·[]‘,[]ŠÇ—[]n[]iNT 3.51[]j[]A[]mfhfLf...
f[]“fg,[]ŠÇ—[]n[]iNT 4.0[]j,É,È,Ä,Ä,ç,é,ì,Äž©·ª,[]fhfLf...f[]“fg,Éí,μ,Ä,[]í[]œ%Ä“\,Ä,·[]BŠÇ—
[]ží,È,ç,É,æ,Ä,ÄCREATOR OWNER,[]fAfNfZfXCE ,[]ží—p,ª[]A[]m^ó[]ü[]n,É·ìX,³,é,Ä,ç
,é[]ê[]‡,[]A[]í[]œ,Ä,«,Ü,¹,ñ[]BÜ,μ,·[]AWindows NT,[]úfvfŠf“f^,[]fAfNfZfXCE ,[]fwf-fv[]v,ð,²—,·,
,³,³,ç[]B

*2ft[]fU,ª[]m·[]‘,[]ŠÇ—[]n[]iNT 3.51[]j[]A[]mfhfLf...f[]“fg,[]ŠÇ—[]n[]iNT
4.0[]j,Ü,½,[]mf[]f-fRf“fgf[]f[]f[]n,[]fvfŠf“f^,[]fAfNfZfXCE ,[]ží,Ä,Ä,ç,Ä,à[]APSW[]ã,Ä,[]AfNf
%[]ofCfAf“fgfRf“fsf...[]f^,©,ç,ì¹¼[]l,[]^ó[]úfhfLf...
f[]“fg,ð[]í[]œ,Ä,«,Ü,¹,ñ[]BfvfŠf“f^ftfHf-f_,©,ç,ì[]í[]œ,ì%Ä“\,Ä,·[]B

*3ft[]fU,ª[]m·[]‘,[]ŠÇ—[]n[]iNT 3.51[]j[]A[]mfhfLf...f[]“fg,[]ŠÇ—[]n[]iNT

4.0j,Ü,½,ÍmftfjRf“fgf□□f□n,lfvfŠf“f^,lfAfNfZfXCE ,đŽ□,Á,Ä,č,Ä,é,Æ,«,Í□A‘¼□l,lfhfLf...
f□f“fg,đ□í□œ,Å,«,Ü,·□BfvfŠf“f^,lfAfNfZfXCE ,□m^ó□ü□n,ì□ê□±,í□í□œ,Å,«,Ü,¹,ñ□B

fšfvfšf“fg,lfZfLf...fšfefB

‡@f[][]fjffvfvšf“f^,l[]ê[]‡,Ü,½,íŠeŽiLANf{[]f[]iLANfAf_fvf^[]j,ðCEo—R,μ,Ä^óü,μ,Ä,ç,é[]ê[]‡

fvf%ofCfx[]f[]f[]Xfv[]f[]ftf@f[]Cf,í[]AŽ©•ª,lfRf“fsf...
[]f^,[]mPrintAgent,lfvf[]fpfefB[]n,Ä[]Ý’è,³,ê,½[]ê[]š,É•Ü’¶,³,ê,Ü,·[]B[]mPrintAgent,lfvf[]fpfefB[]n,[]m
mfšfvfšf“fg<@“\,ð’ñ<Ÿ,·,é[]n[]C[]mfšfvfšf“fg<@“\,ì[]Ý’è[]n,í[]AAdministrators,ìCE CEÀ,ª, ,éft[]fU,ì,Ÿ•
ì[]X,Ä,«,Ü,·[]B
PSW,[]mfšfvfšf“fg<@“\nf_fCfAf[]fo,Ä,í[]A[]mfhfLf...f[]f“fg,ìšç—
[]n,Ü,½,[]mf[]f[]fRf“fgf[]f[]<[]n,lfvfšf“f^,lfAfNfZfXCE ,ðž[]Ä,Ä,ç,é[]l,í,·,x,Ä,lf[]f[]U,lfhfLf...
f[]f“fg,ªfšfXfgfAfbfv,³,ê,Ü,·[]B,» ,é^ÉŠO,ìCE CEÀ,lf[]f[]U,ìž©•ª,lfhfLf...
f[]f“fg,ì,Ÿ,ªfšfXfgfAfbfv,³,é[]A[]m[]š—Lžò[]n—“,í•žì,³,ê,Ü,¹,ñ[]B

‡Af[]fbfgf[][]fN<¤—Lfvfšf“f^,Ä^óü,[]ê[]‡

fvf%ofCfx[]f[]f[]Xfv[]f[]ftf@f[]Cf,lfT[]f[]ofRf“fsf...
[]f^,[]mPrintAgent,lfvf[]fpfefB[]n,Ä[]Ý’è,³,ê,½[]ê[]š,É•Ü’¶,³,ê,Ü,·[]Bfšfvfšf“fg,ì[]Ý’è,í[]AfT[]f[]ofRf“fs
f...[]f^,[]mPrintAgent,lfvf[]fpfefB[]n,ì[]mfšfvfšf“fg<@“\,ð’ñ<Ÿ,·,é[]n[]C[]mfšfvfšf“fg<@“\
,ì[]Ý’è[]n,ª”½%of,³,ê,Ü,·[]BfNf%ofCfAf“fgfRf“fsf...
[]f^,[]mPrintAgent,lfvf[]fpfefB[]n,ì[]mfšfvfšf“fg<@“\,ð’ñ<Ÿ,·,é[]n[]C[]mfšfvfšf“fg<@“\,ì[]Ý’è[]n,É,í
%oe<¿,μ,Ü,¹,ñ[]BfT[]f[]ofRf“fsf...[]f^,[]mPrintAgent,lfvf[]fpfefB[]n,ì[]mfšfvfšf“fg<@“\
,ð’ñ<Ÿ,·,é[]n[]C[]mfšfvfšf“fg<@“\,ì[]Ý’è[]nf{f^f”,í[]A^É%º,ì,æ,¤,ÉfT[]f[]ofRf“fsf...
[]f^,ìOS,É,æ,Ä,Ä[]ACE CEÀ,ª,É,çft[]fU,ì[]Ý’è,ð•ì[]X,Ä,«,É,ç[]ê[]‡,ª, ,è,Ü,·[]B

[]mfT[]f[]ofRf“fsf...[]f^,ìOS,ªWindows 95,[]ê[]‡[]n

fT[]f[]ofRf“fsf...[]f^[]ä,[]mPrintAgent,lfvf[]fpfefB[]n,ì[]mfšfvfšf“fg<@“\
,ð’ñ<Ÿ,·,é[]n[]C[]mfšfvfšf“fg<@“\,ì[]Ý’è[]n,í[]AfT[]f[]ofRf“fsf...[]f^[]ä,Ä,·,x,Ä,lf[]f[]U,ª•ì[]X,Ä,«,Ü,·[]B

[]mfT[]f[]ofRf“fsf...[]f^,ìOS,ªWindows NT,[]ê[]‡[]n

fT[]f[]ofRf“fsf...[]f^[]ä,[]mPrintAgent,lfvf[]fpfefB[]n[][]mfšfvfšf“fg<@“\
,ð’ñ<Ÿ,·,é[]n[]C[]mfšfvfšf“fg<@“\,ì[]Ý’è[]nf{f^f”,í[]AfT[]f[]ofRf“fsf...[]f^[]ä,ÄAdministrators,ìCE CEÀ,ª
, ,éft[]fU,ì,Ÿ•ì[]X,Ä,«,Ü,·[]B

,²^°

- n fT[]f[]ofRf“fsf...[]f^,ìOS,ªCE CEÀ,ÉŠÖ,í,ç,·[]Af[]fbfgf[][]fN<¤—Lfvfšf“f^,É^óü,[]ê[]‡[]AfNf
%ofCfAf“fgfRf“fsf...[]f^,ìPSW,[]mfšfvfšf“fg<@“\nf_fCfAf[]fo,Ä,í[]AŽ©•ª,lfhfLf...
f[]f“fg,ì,ŸfšfXfgfAfbfv,³,ê,Ü,·[]B[]m[]š—Lžò[]n—“,í•žì,³,ê,Ü,¹,ñ[]B
- n ,”žg,ç,É,È,Ä,Ä,ç,éfvšf“f^,É,æ,Ä,Ä,í[]Afšfvfšf“fg<@“\,ª,²—~—p,É,È,è,È,ç[]ê[]‡,ª, ,è,Ü,·[]B[]U,μ,-
,í[]Afšfvšf“f^,lf[]f[]U[]f[]Yf[]fj...f[]f<,ð,²—,É,È,é,©[]A,žg,ç,É,È,Ä,Ä,ç,éfvšf“f^,ìPSW,lfwf-fv,ð,žžQ[]Æ,-
,¾,¾,ç[]B

^óüfOo—Í<@”\,É,Â,ç,Ä

^óüfOo—Í<@”\,É,Ä,íAflfbfgf[]fNŠÄ«„Å•;[]fNf%oCfAf“fg,©,ç^óü,ðs,πŠÄ«„É,“,ç
,ÄAfvfŠf“f^,²,Æ,Éft[]fU-¼A^óüfhfLf...f[]f“fg-¼A^óüfhfLf...f[]f“fg,²,Æ,í^óü-#[]”,“,æ,Ñ^óüfhfLf...
f[]f“fg,²,Æ,í^óüžž[]“™,í^óüfO,ðNTfT[]foã,ífn[]fhfffBfXfN,É<L%~,·,é<@”\,Å,·[]B

n -{<@”\,íT[]f[]fX,Å’ñ<ÿ,³,è[]APrintAgentfCf“fXfg[]f<¼CEã,íAft[]f[]fX,ª’âž~³,è,Ä,ç,Ü,·[]B-{<@”\,ð,²~—
p,É,É,éèè#,í[]A[]mfRf“fgf[]f<f[]f[]f<[]n[]|[]mfT[]f[]fX[]n,©,ç[]A“NEC Printing Information
Logger”,ðŠžžn,μ,Ä,,¾,¾,ç[]B

n

f[]fOftf@fCf<,íPrintAgent,ðCf“fXfg[]f<,μ,½ftfHf<f_,ì“Log“fTfufthf<f_,ÉCSVCE`ž®,Å[]-³,è,Ü,·[]Bftf@fCf
<-¼,í“[]f[]fŠf“f^¼[]j.log”,ì,æ,π,É,É,è,Ü,·[]B

f[]f“fg

n fT[]f[]fX,ìŠžžn,í[]AAdministrators,ìCE À,ª,È,ç,Æžž[]s,Å,«,Ü,¹,ñ[]B

,²’^Ó

n ,“žg,ç,É,È,Á,Ä,ç,évfŠf“f^,É,æ,Á,Ä,í[]A-{<@”\,ð,²~—p,É,É,è,È,çèè#ª,è,Ü,·[]B[]mfRf“fgf[]f<f[]f[]f<[]n
[]|[]mfT[]f[]fX[]n,É“NEC Printing Information Logger”,ª“o~^(*1),³,è,Ä,ç,é,©,Ç,π,©,ð,²Šm“F,,¾,¾,ç[]B
*1f[]fŠf“f^,É,æ,Á,Ä,í“o~^³,è,Ä,ç,Ä,àžg—p,Å,«,Ü,¹,ñ[]B•;[]”,ìPrintAgent’í%žžvfŠf“f^,ªfCf“fXfg[]f<,³,è,Ä,ç
,éèè#,í[]A-{<@”\,ðfT[]f[]f[]f<,·,évfŠf“f^ª1,Ä,Ä,à,è,î[]ă<LfT[]f[]fX,ª“o~^³,è,Ü,·[]B

'á'¬%ñü,â[]—Ê%Û<à%ñü,Ä,ìŽg—p

'á'¬%ñü,ðEo—R,·,é|f|b|f|g|f|f|N<κ—L|v|f|Œ|f|f^,É,Ä,ç,ÄPrintAgent,ðŽg—
p,·,é,ÆA'ÊM'¬“x,ìŠÖEW,ÅPSW,È,Ç,ì'€ì,ª,μ,É,,çêê,ª, ,è,Û,·B,±
,ìêê,íA|A|mPrintAgent,ì|v|f|f|p|f|e|f|B|n,Å|m<κ—L|v|f|Œ|f|f^,ð—~—p,·,é|n,ìf`f|f|b|f|N,ð,Í,,μ,Ä,-
,¾,¾,çB|f|b|f|g|f|f|N<κ—L|v|f|Œ|f|f^,É,Ä,ç,Ä,ìPrintAgent,ì'o•ûEü'ÊM<@"\,ð-³Eø,É,·,é,±,Æ,ª,Ä,«,Û,·B

,Û,½A"']—ff|f^—Ê,É%ž,¶,Ä%Û<à,³,è,é[]—Ê%Û<à[]\$,ì|f|b|f|g|f|f|N,ðEo—R,μ,ÄPrintAgent,ðŽg—
p,μ,Ä,ç,éêê,É,àAPrintAgent,ì'o•ûEü'ÊM,É,æ,Ä,Äff|f^"']—,ª"¶,μA%Û<à,³,è,é,±,Æ,ª, ,è,Û,·B,±
,è,ð"ð,¯,½,çêê,É,àAã'L'€ì,É,æ,Ä,Ä|f|b|f|g|f|f|N<κ—L|v|f|Œ|f|f^,É,Ä,ç,Ä,ìPrintAgent,ì'o•ûEü'ÊM<@"\
,ð-³Eø,É,μ,Ä,,¾,¾,çB

ŠÖ~A¶€-Ú

[^óüf|f|f|o—í<@"\,É,Ä,ç,Ä](#)

'o•ûĈü'Ê□M<@"\,đŽg—p,μ,È,ç□ê□‡

f□□[fjfvfšf“f^,Æ,ì'o•ûĈü'Ê□M,đ'âŽ~,·,é□ê□‡,â PrintAgent,ì<@"\,đŽg—
p,μ,È,ç□ê□‡,í□A,»,ê,¼,ê,ìŽè□‡,É,æ,è□A□Ý'è,đ•ï□X,μ,Ä,,¾,¾,ç□B

flfbfgf□□[fN<κ—Lfvfšf“f^,đ,²Žg—p,É,È,Á,Ä,ç,é□ê□‡,Å□A□Nf%ofCfAf“fgfRf“fsf...□[f^,ìPrintAgent,ì<@"\,đŽg—
—p,μ,È,ç,Æ,«,í□A□uPrintAgent,ì'S<@"\,đ^êŽž“l,É'âŽ~,¾,¾,é□v,ì1□`3,ì□Ý'è,đ□s,Á,Ä,,¾,¾,ç□B

{button ,JI(` PAN4.HLP>step', `IDH_PA_HIGH_STOPBIDI95')} 'o•ûĈü'Ê□M<@"\,đŽg—p,μ,È,ç,æ,κ,É,·,é
{button ,JI(` PAN4.HLP>step', `IDH_PA_HIGH_STOPPA95')} PrintAgent,ì'S<@"\,đ^êŽž“l,É'âŽ~,¾,¾,é

,²'□^Ó

n flfbfgf□□[fN<κ—Lfvfšf“f^,đ,²Žg—p,ì□ê□‡,Å□A,“Žg,ç,É,È,Á,Ä,ç,é□Nf%ofCfAf“fgfRf“fsf...□[f^,¾,¾,Ä,È,-
flfbfgf□□[fN'S'ì,ÅPrintAgent,ì<@"\,đ~—p,μ,È,ç,Æ,«,í□A□f□□[fofRf“fsf...□[f^,À,à□ă<L,ì□Ý'è,đ□s,κ•K—v,²,
,è,Û,·□B□f□□[fo,ìOS,É,æ,è□Ý'è“à—e,²^Û,È,è,Û,·,ì,Å□A□Û,μ,,í□f□□[fo,ì□uPrintAgentfwf<fv□v,ì—{□€-
Û,đŽQ□Æ,μ,Ä,,¾,¾,ç□B

'o•ûĈü'ÊM<@”\,đŽg—p,μ,Ě,č,æ,ɣ,Ě,·,é

fvfŠf“f^,Æ,ì'o•ûĈü'ÊM,đ^êŽž“l,ÉŽg—p,μ,Ě,čĚĚ‡,Í^È%°°,l,æ,ɣ,Ě,μ,Ä,,¾,¾,¾,čB

1 □mfXf^□[fg□nf□fj...□[.©,ç□A□m□Ÿ'è□n□|□mfvfŠf“f^□n,đfNfŠfbfN,μ,Û,·□B

2 •\Žl,¾,ê,¾fvfŠf“f^,ì†,©,ç—{fvfŠf“f^,đ'l'đ,μ□A□f□fj...□[.l□mftf@fCf<□n□|□mfvf□pfefB□n,đŠ),«,Û,·□B

3 □mf|□[fg□n□|□m'o•ûĈüfTf|□[fg,đ—LĈø,Ě,·,é□n,lf`fFfbfN,đ,Í,,μ□AOK,đfNfŠfbfN,μ,Û,·□B

PrintAgent,ì'S<@"\,ð^êŽž"l,É'âž~,³,¹,é

PrintAgent,ì'S<@"\,ð^êŽž"l,É'âž~,·,éêê‡,í^È%º,ì,æ,α,É,μ,Ä,,¾,³,¶B

- 1 □mfXf^□[fg□nf□fj...□[.©,ç□A□m□Y'è□n□|□mfvfšf"f^□n,ðfNfšfbfN,μ,Û,·□B
- 2 •\Žl,³,ê,½fvfšf"f^,ì't,©,ç- {fvfšf"f^,ð'l'ð,μ□A□f□fj...□[.l□mftf@fCf<□n□|□mfvf□pfefB□n,ðšJ,«,Û,·□B
- 3 □mf|□[fg□n□|□m'o•ûEüfTf|□[fg,ð—LCEø,É,·,é□n,ìf`fFfbfN,ð,í,,μ□AOK,ðfNfšfbfN,μ,Û,·□B
- 4 □mPrintAgent,ìfvf□pfefB□n,ðšJ,«,Û,·□B
- 5 □mfVfXfef€,ðž©"®"l,É<N"®,·,é□n□A□m<α—Lfvfšf"f^,ð—~—p,·,é□n□A□m<α—
Lfvfšf"f^,ð'ñ<ÿ,·,é□n,ìf`fFfbfN,ð,í,,μ,½, ,Æ□A□mOK□n,ðfNfšfbfN,μf_fCfAf□fOf{fbfNfX,ð•Â,¶,Û,·□B
- 6 PrintAgent,ð□l—¹,μ,Û,·□B
- 7 fT□[frfX,ð'âž~,μ,Û,·□B

ŽQ□Æ

PrintAgent,ÉšÖ,·,é,m,s,ìfT□[frfX,ì<N"®□A'âž~

PrintAgent,Á,Ï|[]fjg,ìY'è

n Windows NT 4.0,ÏvfŠf“f^fv[]f<,ÏTf|[]fjg,μ,Ä,ç
,Ü,¹,ñBf[]fjfvfŠf“f^,Ïé[]#,â[]AfvfŠf“f^,â¹/₄Ü,Ä,È,^a,Ä,Ä,ç,éRf“fsf...[]f^,ÏOS,^aWindows NT
4.0,Ïé[]#[]AWindows NT 4.0[]ã,ì,.,x,Ä,ÏvfŠf“f^,Ïmfvf[]pfefB[]n[]|[]mf|[]fjg[]n[]|[]mfvfŠf“f^fv[]f<,ð—
LCEø,É,.,é[]n,Ï`fFfbfN,ð,Í,.,μ,Ä,²Zg—p,,³/₄,³,ç[]B[]mfvfŠf“f^fv[]f<,ð—
LCEø,É,.,é[]n,ð`fFfbfN,μ,¹/₂[]é[]#[]AfvfŠf“f^,Ïó‘Ô,^aμ,•\Z!,³,é,Ü,¹,ñBÜ,μ,,ÏvfŠf“f^,Ïwfv,ð,²—,-
,³/₄,³,ç[]B

ŠÖ~AŽ-[]€

'o•ûCEü'Ê[]M<@"\,ðŽg—p,μ,È,ç[]é[]#

PrintAgent,ÉŠÖ,·,éNT,lfT[frfX,ì<N"®A'âŽ~

PrintAgent,Á,í□A

n NEC Network Printer Status Server

n NEC Printer Status Database

n NEC Printer Status Watcher

n NEC Printing Information Logger

n NEC Private Spool System

,lfT[frfX,·,è,Ü,·□B

,²'□^Ó

n ,Žg,ç,É,È,Á,Ä,ç,évfšf" f^,É,æ,Á,Ä,í□A"o~^,³,è,Ä,ç,éft[frfX,í^Ù,È,è,Ü,·□B

NEC Network Printer Status Server,É,Á,ç,Ä

flfbfgf□□[fnfnf%ofCfAf"fgfvfšf" f^,ðflfbfgf□□[fnñä,Ä<κ—L,μ□Afnf
%ofCfAf"fg,Éfvfšf" f^,ì□ó'Ô,ðœöšj,·,é□é□±,ÉšjŽn,μ,Ä,-
,¾,³,ç□BšjŽn,·,é,É,í□APrintAgent,lfvf□pfefB,Ä□m<κ—
Lfvfšf" f^,ð'ñ<ÿ,·,é□n,ðf' fFfbfN,·,é,©□A□mfRf"fgf□□[f<fpflf<□n□□mfT□[frfX□n,Ä"NEC Network
Printer Status Server" ,ðšjŽn,μ,Ä,,¾,³,ç□B

NEC Printer Status Database,É,Á,ç,Ä

PrintAgent,Áfvfšf" f^,ì,·,x,Ä,ì□ó'Ô,ð·Ù'¶,·,é,½,β,É·K—v,Éft[frfX,Á,·□BPrintAgent,ð,²Žg—
p,ì□é□±,í□mfRf"fgf□□[f<fpflf<□n□□mfT□[frfX□n,ì□mfXf^□[fgfAfbfv□n□□mfXf^□[fgfAfbfv,ìží—
p□n,ð□mž©"®□n,É,μ,ÄfRf"fsf...□[f^<N"®žž,É·K,ž©"®<N"®,·,é,æ,κ,É,μ,Ä,,¾,³,ç□B

NEC Printer Status Watcher,É,Á,ç,Ä

PrintAgent'í%özfvfšf" f^,ðšjŽ<,·,é,½,β,É·K—v,Éft[frfX,Á,·□BPrintAgent,ð,²Žg—
p,ì□é□±,í□mfRf"fgf□□[f<fpflf<□n□□mfT□[frfX□n,ì□mfXf^□[fgfAfbfv□n□□mfXf^□[fgfAfbfv,ìží—
p□n,ð□mž©"®□n,É,μ,ÄfRf"fsf...□[f^<N"®žž·K,ž©"®<N"®,·,é,æ,κ,É,μ,Ä,,¾,³,ç□B

NEC Printing Information Logger,É,Á,ç,Ä

'¾□Úfvfšf" f^,é□Ú'±,³,è,½fRf"fsf...□[f^,Á^ó□ü□î·ñ,ðf□fOftf@fCf<,É<L^~,·,é□é□±,ÉšjŽn,μ,Ä,-
,¾,³,ç□BšjŽn,·,é,É,í□A □mfRf"fgf□□[f<fpflf<□n□□mfT□[frfX□n,Ä"NEC Printing Information Logger"
,ðšjŽn,μ,Ä,,¾,³,ç□Bžž'Y%ñWindows NT<N"®žž,Éž©"®"í,ÉšjŽn,·,é,É,í□mfXf^□[fgfAfbfv□n□
□mfXf^□[fgfAfbfv,ìží—p□n,ð□mž©"®□n,É,μ,Ä,,¾,³,ç□B
f□fOftf@fCf<,íPrintAgent,ðfCf" fXfg□[f<,μ,½ftfHf<f_,ì"Log"ftfufthf<f_,ÉCSVÉ`žž,Á□□—,³,è,Ü,·□Bft
f@fCf<-¾,í"□ifvfšf" f^-¾□j.log",ì,æ,κ,É,È,è,Ü,·□B

NEC Private Spool System,É,Á,ç,Ä

'¾□Úfvfšf" f^,é□Ú'±,³,è,½fRf"fsf...□[f^,Áfšfvfšf"fg<@"\,ðžg—p,·,é□é□±,â□Aflfbfgf□□[fnfnf
%ofCfAf"fg,Éšfvfšf"fg<@"\,ð'ñ<ÿ,·,é□é□±,ÉšjŽn,μ,Ä,-
,¾,³,ç□BšjŽn,·,é,É,í□APrintAgent,lfvf□pfefB,Ä□mfšfvfšf"fg<@"\
,ð'ñ<ÿ,·,é□n,ðf' fFfbfN,·,é,©□A□mfRf"fgf□□[f<fpflf<□n□□mfT□[frfX□n,Ä"NEC Private Spool System"
,ðšjŽn,μ,Ä,,¾,³,ç□B

►Ú,μ,,í□mfRf"fgf□□[f<fpflf<□n□□mfT□[frfX□n,lfwf<fv,ð,²—,¾,³,ç□B

ŽQ□Æ

{ button ,JI(`Pan4.HLP>step',`IDH_PA_HIGH_PAMANUALSTART')} PrintAgent,ðžè"®,Á<N"®,·,é

{ button ,JI(`Pan4.HLP>step',`IDH_PA_HIGH_PAMANUALEND')} PrintAgent,ðžè"®,Á'âž~,·,é

PrintAgent,đŽè“® ,Á<N“® ,·,é

PrintAgent,đŽè“® ,Á<N“® ,·,é,É,í^È%oº,ì,æ,æ,É,µ,Ä,,¾,¾,¾,¾,¾,¾

1 []mfRj“fg[]f<fpflf<n,đŠJ,«[]A[]mfT[]f<rfX[]n,đf_fuf<fNfŠfbfN,µ[]A"Spooler" ,²[]mŠJŽn[]n,¾,é,Ä,ç ,é,ì,đŠm"F,µ,Ä,,¾,¾,¾,¾,¾,¾

2 "NEC Printer Status Database" ,đ<N“® ,µ,Ä,,¾,¾,¾,¾,¾,¾

3 "NEC Private Spool System",đ<N“® ,µ,Ä,,¾,¾,¾,¾,¾,¾

4 "NEC Printing Information Logger",đ<N“® ,µ,Ä,,¾,¾,¾,¾,¾,¾

5 "NEC Printer Status Watcher" ,đ<N“® ,µ,Ä,,¾,¾,¾,¾,¾,¾

6 "NEC Network Printer Status Server" ,đ<N“® ,µ,Ä,,¾,¾,¾,¾,¾,¾

7 []mfXf^[]f<g[]nf[]fj...[][,©,ç[]A[]mfvf[]fOf%of€[]n[]|[]mfvfŠf“f^<@Ží-¼[]n[]| []mPrintAgentfVfXfef€<N“®[]n,đfNfŠfbfN,µ,Ä,,¾,¾,¾,¾,¾,¾

8 []mfXf^[]f<g[]nf[]fj...[][,©,ç[]A[]m[]Ý’è[]n[]|[]mfvfŠf“f^[]n,đfNfŠfbfN,µ[]A•\Ž!,¾,é,½fvfŠf“f^,ì’t,©,ç- {fvfŠf“f^,đ’ì’đ,µ[]A[]f[]fj...[][,ì[]mftf@fCf<[]n[]|[]mfvf[]pfefB[]n,đŠJ,«,Ü,·[]B

9 []mf|[]f<g[]n[]|[]m’o•ùCüfTf|[]f<g,đ—LCEø,É,·,é[]n,²f`fFfbfN,¾,é,Ä,ç,é,±,Æ,đŠm"F,µ,Ä,,¾,¾,¾,¾,¾,¾

,²’[]^Ó

n ,“Žg,ç,É,È,Á,Ä,ç,éfvfŠf“f^,É,æ,Á,Ä,í[]A“o~^,¾,é,Ä,ç,È,çfT[]f<rfX,à, ,è,Ü,·[]B“o~^,¾,é,Ä,ç,È,çfT[]f<rfX,É,Á,ç ,Ä,ìŽè[]‡,í[]A,““Ç,Ý”ò,ì,µ,,¾,¾,¾,¾,¾,¾

PrintAgent,đŽè“®,Á'âŽ~,·,é

PrintAgent,đŽè“®,Á'âŽ~,·,é,É,Í^È%º,ì,æ,æ,É,μ,Ä,,¾,¾,ç□B

- 1 □mfXf^□[fg□nf□fjf...□[,©,ç□A□m□Ý'è□n□|□mfvfšf“f^□n,đfNfšfN,μ,Ü,·□B
- 2 •\Ž!,¾,é,½fvfšf“f^,ì†,©,ç□A- {fvfšf“f^,đ'l'đ,μ□A□f□fjf...□[,ì□mftf@fCf<□n□|□mfvf□fpfefB□n,đŠ],«,Ü,·□B
- 3 □mf|□[fg□n□|□m'o•ûCEüfTf|□[fg,đ—LCEø,É,·,é□n,ìf`fFfbfN,đ,Í,,μ,Ä,,¾,¾,ç□B
- 4 PrintAgentfAfCfRf“,ì□m•Ä,¶,é□n,đ'l,ñ,Á□l—¹,¾,¾,¾,¾,ç□B
- 5 □mfRf“fgf□□[f<fpf|f<□n,đ,Đ,ç,«□A□mfT□[frfX□n,đf_fuf<fNfšfN,μ,Ä,,¾,¾,ç□B
- 6 "NEC Network Printer Status Server" ,đ'âŽ~,μ,Ä,,¾,¾,ç□B
- 7 "NEC Printer Status Watcher" ,đ'âŽ~,μ,Ä,,¾,¾,ç□B
- 8 "NEC Private Spool System", "NEC Printing Information Logger", "NEC Printer Status Database"
,đ'âŽ~,μ,Ä,,¾,¾,ç□B
- 9 □mfT□[frfX□n,đ□l—¹,μ,Ä,,¾,¾,ç□B

,²'□^Ó

n ,Žg,ç,É,È,Á,Ä,ç,éfvfšf“f^,É,æ,Á,Ä,í□A“o~^,¾,é,Ä,ç,È,çfT□[frfX,à, ,è,Ü,·□B“o~^,¾,é,Ä,ç,È,çfT□[frfX,É,Ä,ç,Ä,ìŽè□±,í□A,““Ç,Ý”ò,ì,μ,,¾,¾,ç□B

PrintAgent,ª<N“® ,µ,Ä,ç,È,ç êë†,ì<@”\

PrintAgent,ìfAfCfRf“,ð|—¹,·,é,Æ□Aflfbfgf□□[fN<¤—LfvfŠf“f^,ìî•ñŽæ“¾,Æ^ó□üŽž,ìPSW,ìŽ©“®<N“®<@”\
,Í—~—p,Å,«,,È,,è,Ü,·,ª□A^È%º,ì<@”\,í“®□ì,µ,Ä,ç,Ü,·□B

n Ž©•ª,ìfRf“fsf...□[f^,©,ç’ñ<Ÿ,µ,Ä,ç,é|fbfgf□□[fN<¤—
LfvfŠf“f^,ìfXfe□[f^fX<Ÿ<<□i□mPrintAgent,ìfvf□fpfefB□n,Å□m<¤—LfvfŠf“f^,ð’ñ<Ÿ,·,é□n,ªf`ffbfN,³,è,Ä,ç
,½□ê□†□j

n fvfŠf“f^,ì□Ý’èf_fCfAf□fOf{fbfNfX,ðŠ},ç,½,è□A□mfXf^□[fg□nf□ffj...
□[,©,çfŠf,□[fgf□f|f<,âPSW,ð<N“® ,·,é,Æ□AŽ©“®“l,ÉPrintAgent,ª<N“® ,µ□Af^fXfNfo□[,ÉfAfCfRf“,Æ,µ,Ä□í’
“,µ,Ü,·□B

“ÁŽè,ÈfvfŠf“f^Ú’±<@Ší,ð,“Žg,ç,ìé†

PrintAgent'Í%žfvfŠf“f^,ðfCf“fXfg[f<,μ,½,Æ,«,ÉŽw'è,μ,½f]
[fg,ÉAŠO•t,̀,ìfvfŠf“f^fCf“f^ftfF[fX•İŠ·fAf_fvf^,âfvfŠf“f^fofbftf@,ð,“Žg,ç,ìé†APrintAgent,Í³,μ,-
“@ì,μ,Ü,¹,ñB,±,è,ç,ì<@Ší,ð,“Žg,ç,É,È,éé†,ÍAŽŸ,ì,ç,,é,©,ì['u,ðŽæ,Á,Ä,,³,³,çB
{button ,JI(` PAN4.HLP>step', `IDH_PA_HIGH_STOPPORT95')} ŠY“-.,éo—Íf]
[fg,ì,ÝPrintAgent,ð“@ì,μ,È,ç,æ,π,É,·,é
{button ,JI(` PAN4.HLP>step', `IDH_PA_HIGH_UNINST')} PrintAgent,ðfAf“fCf“fXfg[f<,·,é

ŠY“-.,,é□o—Íf|□[fg,ì,ÝPrintAgent,đ“@□ì,μ,È,ç,æ,π,É,.,é

ŠY“-.,,é□o—Íf|□[fg,ì,ÝPrintAgent,đ“@□ì,μ,È,ç,æ,π,É,.,é□ê□#,í^È%oo²,ì,æ,π,É,μ,Ä,,¾,³,ç□B

1 □mfXf^□[fg□nf□fjf...□[.©,ç□A□m□Ý'è□n□|□mfvfŠf“f^□n,đfNfŠfbfN,μ,Ü,·□B

2 •\Ž!,³,ê,½fvfŠf“f^,ì't,©,ç- {fvfŠf“f^,đ'l'đ,μ□A□f□fjf...□[.ì□mftf@fCf<□n,©,ç□A□mfvf□fpfefB□n,đŠJ,«,Ü,·□B

3 □mf|□[fg□n□|□m'o•ûCEüfTf|□[fg,đ—LCEø,É,.,é□n,ìf`fFfbfN,đ,í,,μ□AOK,đfNfŠfbfN,μ,Ü,·□B

PrintAgent,đfAf“fCf“fXfg□[f<,.·,é

PrintAgent,đfAf“fCf“fXfg□[f<,.·,éêë,í□A□mfXf^□[fg□nf□fj...□[.©,ç□mfvf□fOf%of€□n□□mfvfŠf“f^<@Ží-
¼□n□□m,“Ç,Ý,,¾,³,ç□n,đfNfŠfbfN,μ□AŠJ,©,ê,½□à-¾•¶,ì't,ìfAf“fCf“fXfg□[f<,ì•û-@□A,à,μ,-
.íft□[fU□[fYf}fj...fAf<,ìfAf“fCf“fXfg□[f<,ì□€,đŽQ□Æ,μ,ÄfAf“fCf“fXfg□[f<,μ,Ä,,¾,³,ç□B

PrintAgent'í%žfvfŠf“f^,Æ,»,ì¼,ìfvfŠf“f^,ì<æ‘ŕ

PrintAgent'í%žfvfŠf“f^,Æ,»,ì¼,ìfvfŠf“f^,đ“̄,ŕf|[[fg,Å~—p,·,éêê‡,ì'ŕ^ÓŽ-€

n PrintAgent'í%žfvfŠf“f^,Æ,»,ì¼,ìfvfŠf“f^,âA“̄,ŕm^óüüæ,ŕf|[[fgn[i*1j,đŽg—p,μ,Ä,ç
,éêê‡A^óüü,â³i,É,Å,«,È,©,Á,½,èAPrintAgent,â³,μ,“@ì,μ,É,çêê‡,â, ,è,Û,·B

{button ,JI(`PAN4.HLP>step', `IDH_PA_HIGH_PRINTONPA')} '¼fvfŠf“f^,æ,èPrintAgent'í%žfvfŠf“f^,đ—
Dæ,μ,Å^óüü,³,¹,é

*1fvfŠf“f^ftfHfçf_“à,ìŠefvfŠf“f^,ìfvfŕpfefB,đŠJ,,ÆAmf|[[fgnf^fu,ÅACE»ŕŕŕ'è,³,è,Ä,ç,ém^óüü,·,é|
[[fgn,đŠm”F,·,é,±,Æ,â,Å,«,Û,·B

ŽQÆ

[PrintAgent,Å,ŕf|\[\[fg,ìŕŕ'è](#)

'¼fvfŠf“f^,æ,èPrintAgent'Í%žvfŠf“f^,ð—Dæ,μ,Ä^óü,³,¹,é

PrintAgent,É'Í%ž,μ,Ä,ç,È,çfvfŠf“f^,³“~,¶[^óüüæ,lf|[fg],ÉÚ'±,³,ê,Ä,ç,é,½,β,ÉPrintAgent'Í
%žvfŠf“f^,Ä^óü,³³í,É,Ä,«,É,©,Á,½,èPrintAgent,³³,μ,“@ì,μ,È,çéç,ÍA^È%º,ì,æ,κ,É,μ,Ä,-
,¾,³,çB

- 1 mfxf^|[fg]nfjff...|[,©,çAmÝ'èn|[mfvfŠf“f^|n,ðfNfŠfbfN,μ,Ü,·B
- 2 •Ž,³,é,½fvfŠf“f^ftfHf<f_,©,çA'¼,lfvfŠf“f^,lfvf|pfefB,ðŠJ,«,Ü,·B
- 3 mfl|[fg]nf^fu,Åm'ó•úCEüfTf|[fg,ð—LCEø,É,·,é|n,lf`fffbfN,ð,í,,μ,Ü,·B
- 4 mOK|n,ðfNfŠfbfN,μ,Äfvf|pfefB,ð•Ä,¶,Ü,·B

'^Ó

n ,»,ìCEä'¼,lfvfŠf“f^,ð,²Žg—p,É,È,ééç,ÍA“~,¶f_cfAf|Of{fbfNfX,ÅAm'ó•úCEüfTf|[fg,ð—
LCEø,É,·,é|n,ðf`fffbfN,μ,Ä,Žg,ç,,¾,³,çB

flfbfgf [fN,ÉŠÖ,·,é-â'è

,²—,É,È,è,½,ç□€-Ú,ðfNfŠfbfN,μ,Ä,,¾,³,ç□B

{button ,JI(`Pan4.HLP>tblshoot',`IDH_PA_ERR_NET_CANTPRINT')}

flfbfgf [fNfvfŠf“f^,É'Í,μ,Ä^ó□ü,ä,Ä,«,È,ç

{button ,JI(`Pan4.HLP>tblshoot',`IDH_PA_ERR_NET_PSWCANTGETINFO')} PSW,ÅfT□[fofRf“fsf...

□[f^,ì□î•ñ,äŽæ“¾,Ä,«,È,ç

{button ,JI(`Pan4.HLP>tblshoot',`IDH_PA_ERR_NET_RPCANTGETINFO')} fŠf,□[fgfpflf<,Åflfbfgf [fN<æ—

LfvfŠf“f^,ì□î•ñ,äŽæ“¾,Ä,«,È,ç

{button ,JI(`Pan4.HLP>tblshoot',`IDH_PA_ERR_NET_RPCANTSET')} fŠf,□[fgfpflf<,Åflfbfgf [fN<æ—

LfvfŠf“f^,Ö□Y'è,Ä,«,È,ç

{button ,JI(`Pan4.HLP>tblshoot',`IDH_PA_ERR_NET_LOWPRINT')} ^ó□ü,ä'x,ç

{button ,JI(`Pan4.HLP>tblshoot',`IDH_PA_ERR_PIC')} □»•iftf|□[fg

flfbfgf[]fNfvfŠf“f^,Éí,μ,Ä^óü,a,Ä,«,È,ç

n Windows,lfjfbfgf[]fN,ìŸ'èAfvfŠf“f^,ìŸ'è,a^Ùí,Ä,·B

►Windows,lfjfbfgf[]fN,ìŸ'èAfvfŠf“f^,ìŸ'è,ðŠm”F,μ,Ä,,¾,¾,çBÚ,μ,,íAWindows,lfwfv,ð,²—,—,-
,¾,¾,çB

PSW,ÅfT[fofRf“fsf...[f^,ìî•ñ,Žæ“¾,Å,«,È,ç

n flfbfgf[fNf,fWf...[f<A,Ü,½,íflfbfgf[fN,»,ì,à,ì,É-â'è,ª, ,è,Ü,·B

►PSW,Å•Ž,³,è,Ä,ç,éf[fbfZ[fW,É,æ,Ä,Ä'î^•û-@,ª^Ü,È,è,Ü,·BÜ,μ,,íA[mfXf^[fg[nf[fjf...

[,©,çA[mfvf[fOf%of€n[|mfvfŠf“f^<@Ží-¼n[|mPrintAgentfwf<fv[n|

mPSW,ìf[fbfZ[fWn,ì,»,è,¼,è,ì€,ðŽQÆ,μ,Ä,,¾,³,çB

fŠf, [lfgfpflf<, Åflfbfgf [fN<α—LfvfŠf“f^, ìî•ñ, aŽæ“¾, Å, «, È, ç

n fvfŠf“f^, aA'o•ûœü'ÉM, Å, «, È, çfCf“f^ftfF[fX, ÅÚ'±, ³, ê, Ä, ç, Ü, ·B, à, μ, , ífvfŠf“f^, afofbftf@, ðœo—
R, μ, ÅÚ'±, ³, ê, Ä, ç, Ü, ·B

►fvfŠf“f^, ìœ»Ÿ, ìŸ'è, í“Ç, Ÿž, ß, ±, /E, a, Å, «, Ü, ¹, ñB

n fvfŠf“f^, aflt%ofCf“, Å, ·B

►flt%ofCf“, ìê#, ífvfŠf“f^, ìŸ'è, í“Ç, Ÿž, ß, Ü, ¹, ñB^óü%oÅfXfCfbf` , ð%oŸ, μ, Ä, , ¾, ¾, çB

n fvfŠf“f^, a^óú't, Å, ·B

►^óú't, ìê#, ífvfŠf“f^, ìŸ'è, í“Ç, Ÿž, ß, Ü, ¹, ñBPSW, È, Ç, Å, ²Šm”F, ì, x, ìA^óü|—¹, ð, ¨, Ò, ¿, , ¾, ¾, çB

fŠf, [fgfpflf<, Åflfbfgf [fN<κ—LfvfŠf“f^, ÖÝ’è, Å, «, È, †
n fŠf, [fgfpflf<, Åflfbfgf [fN<κ—LfvfŠf“f^, ÖÝ’è, ðs, ”, κ, Æ, μ, Ä, †, Ü, ·B
►fZfLf...fŠfefB, È, æ, è [fN<κ—LfvfŠf“f^, Ö, ÍÝ’è, Å, «, Ü, ¹, ñB

ŽQÆ

[fŠf, \[fgfpflf<, fZfLf...fŠfefB](#)

^óü,ä'x,ç

n 'o•ûĉÛ'ÊM<@"\,ð,²Žg—p,É,È,Á,Ä,ç,Û,·B

►'á'¬,Êfjfbfgf[]fN%ñü,²Žg—pŽž,È,ÇA'o•ûĉÛ'ÊM<@"\,ð,²Žg—p,É,È,ç,È,ç,Û,æ,ä^óü,ä'ü,,È,éê†,ä, ,
è,Û,·B

ŽQÆ

'á'¬%ñü.â[]—Ê%Û<à%ñü.Ä.İŽg—p

,»,ì¼,ì-â'è

,²—,É,È,è,½,ç€-Ú,ðNfŠfbfN,μ,Ä,,¾,¾,çB

{button ,JI(`Pan4.HLP>tblshoot',`IDH_PA_ERR_ETC_PAOFF') } PrintAgent,ªN“®,μ,Ä,ç,È,ç

{button ,JI(`Pan4.HLP>tblshoot',`IDH_PA_ERR_ETC_NOSPOOLER') } ^óü,ÉŽžŠÔ,ª,©,©,é

{button ,JI(`Pan4.HLP>tblshoot',`IDH_PA_ERR_ETC_DATA LAMP') } ^óü,μ,Ä,ç,È,ç,ì,Émff[f^nf %of“fv,ª“_“”,·,é

{button ,JI(`Pan4.HLP>tblshoot',`IDH_PA_ERR_ETC_NEXTLOGON') }

PSW,lfvf[]pfefB[]APrintAgent,lfvf[]pfefB,ìY'è,ªŽY%ñf[]Ofjf“Žž,É”½%of,¾,è,È,ç

{button ,JI(`Pan4.HLP>tblshoot',`IDH_PA_ERR_ETC_DATAREMAIN') }

uff[f^fKfmfRfbfefCf}fXv,ì,Ü,Ü^óü,ª[]-¹,μ,È,ç

{button ,JI(`Pan4.HLP>tblshoot',`IDH_PA_ERR_PIC') } []»•ifTf|[]fg

PrintAgent, a<N" @, μ, Ä, ç, È, ç

n PrintAgent, ³ft [fU, È, æ, Á, Ä |—¹, ³, è, Ü, μ, ½ □B

►, ±, ìf {f^f"

►, ðfNfSfjbfN, ·, é, © □A □mfvf □fOf%of€f}fì □fWff □n, ì □mfvfŠf" f^ <@Ží-

¼ □n, ©, ç □A □mPrintAgentfVfXfef€<N" @ □n, ðfNfSfjbfN, ·, é, Æ □APrintAgent, a<N" @, ³, è, Ü, · □B

n □mPrintAgent, ìfvf □fpfefB □n, Á □A □mfvfXfef€, ðŽ © " @ "l, È <N" @, ·, é □n, ³f` fFbfN, ³, è, Ä, ç, Ü, ¹, ñ □B

► □mfVfXfef€, ðŽ © " @ "l, È <N" @, ·, é □n, ðf` fFbfN, μ, Ä, ·, ¾, ¾, ç □B ŽŸ%oñ, iWindowsf □fOfj" Žž, ©, ç, ±, ì □Y'è, í—
LCEø, È, È, è, Ü, · □B

n •K—v, Èf, fWf... □f<, ³fCf" fXfg □[f<, ³, è, Ä, ç, È, ç, © í □œ, ³, è, Ä, ç, Ü, · □B

►PrintAgent, ð □ÄfCf" fXfg □[f<, μ, Ä, ·, ¾, ¾, ç □B

ŽQ □Æ

[PrintAgent, ìfvf □fpfefB](#)

^óü,ÉŽšŦ,ª,©,©,é

n jXfv[f%o,đŽg—p,μ,È,çŸ'è,É,È,Á,Ä,ç,Û,

►mfXf^ [fgnffjf... [, © , çmŸ'èn |mfvfšf^ n,đfNfšfbfN,μA'íÛ,ífvfšf^ f^,đ'l'đ,μffjf...
[, i mftf@fCf<n, © , çmfvf f p f e f B n, đ S j, «, Û, : B mfXfP f W f... [f<n |mfvfšf^ f^, É'¼Û^ óüff [f^, đ'—
, é n, đ Ž g—p, μ, ½ è ÷ A^ óü | —¹, Û, Á Ž š Ŧ,ª, ©, ©, ±, Æ,ª, , è, Û, : B, » , i è ÷, i A m^ óü f h f L f...
f f " f g, đ f X f v [f < , μ A f v f [f O f % f € , i ^ ó ü | — , đ , ' , É [s, x] , đ , ² Ž g—p , , ³/₄ , ³, ç B

^óü,μ,Ä,ç,È,ç,ì,Émf[]f^[]nf%of“fv,ª“_“”,·,é

n fvfŠf“f^,Æ'o•ûCEü'ÊM,ðs,Á,Ä,ç,Ü,·B

►fvfŠf“f^,ì“dCE¹fj“,Ü,½,ífŠfZfbfg'¼CEãA,“,æ,ÑAfŠf,[]fgfpfj<,ì<N“@Žž,Ü,½,ímfvfŠf“f^,ìY'è,ì“Ç,Ýž,Ý
[]nŽž,ÉAfvfŠf“f^,ì'€[]fpfj<,[]mf[]f^[]nf%of“fv,ª“_“”,μ,Ü,;ªA,±,é,í^óüff[]f^,Ä,í,è,Ü,¹ňBŽ©“@“l,É
Á“,μ,Ü,·B

PSW, ìfʋf̄̄fp̄f̄f̄B̄APrintAgent, ìfʋf̄̄fp̄f̄f̄B̄, ìŸ'è, ²ŽŸ%ñf̄̄f̄Of̄l̄f̄“Žž, É”½%of, ³, ê, È, ç

n f̄t̄̄[f̄UĈ ĈÀ, ²mGuests̄̄n̄f̄Ĉf̄x̄f̄<, É, È, Ā, Ā, ç, Ū, ·̄B

►m̄f̄t̄̄[f̄Ū̄f̄}f̄l̄̄f̄Wff̄̄n, ĀŸ'è, ³, ê, Ā, ç, éf̄t̄̄[f̄UĈ ĈÀ, ²mGuests̄̄n̄f̄Ĉf̄x̄f̄<, ìf̄t̄̄[f̄U, ²f̄̄f̄Of̄l̄f̄“, μ, ½, /E, «, É̄̄APS
W, ìfʋf̄̄fp̄f̄f̄B̄APrintAgent, ìfʋf̄̄fp̄f̄f̄B̄, É'í, μ, Āf̄t̄̄[f̄U, ²s, Ā, ½ • í̄̄X, ì̄̄AŽŸ%ñf̄̄f̄Of̄l̄f̄“Žž, É, í”½
%of, ³, ê, Ū, ¹, ñ̄̄B̄f̄v̄f̄x̄f̄ēf̄€ŠÇ—̄̄Z̄Ō, É, ²~A—̄̄, , ³/4, ³, ç̄̄B

uff[f^fKfmfRfbfefCf}fXv,ì,Ü,Ü^óü,²I-¹,µ,È,ç

n fn[fhfffBfXfN,ì<ó,«-e-Ê,«'«,è,È,ç,½,ß,É³,µ,ç^óüff[f^,²i-À,«,Ü,¹,ñ,Ä,µ,½B

▸fvfŠf“f^,ìfffBfXfvfCfC•\Ž,²uff[f^fKfmfRfbfefCf}fXv,ì,Ü,Ü^óü,²I-

¹,µ,È,çê,íAfn[fhfffBfXfN,ì<ó,«-e-Ê,đSm”F,µ,Ä,,¾,¾,çB<ó,«-e-Ê,²,È,çêA•s-
v,Éftf@fCf<,đíœ,µ,Ä<ó,«-e-Ê,đ’â,µ,Ä,©,çA^óü,µ,È,,µ,Ä,,¾,¾,çBfvfŠf“f^,ÉŽc,Á,Ä,ç,é-
ç^óüff[f^,íAfvftfgfXfCfbf`,đ%Ÿ,µ,È,²,ç”rofXfCfbf`,đ%Ÿ,µ,ÄAfvfŠf“f^“à,ÉŽc,Á,Ä,ç,é-
ç^óüff[f^,đ^óü,µ,Ä,,¾,¾,çB,Ü,½APSW,É,,ç,Äu^óü,µ,Ä,ç,Ü,·v,Ì•\Ž,²±,-
ê,íAfvfŠf“f^,đfŠZfbfg,µ,Ä,,¾,¾,çB

,²’^Ó

n ,”Žg,ç,É,È,Á,Ä,ç,éfvfŠf“f^,É,æ,Á,Ä,íA•\Ž,³,è,éfbfZ[fW,,æ,Ñ”ro•û-@,²^Ü,È,éê,²,²,è,Ü,·BÚ,µ
,ìfvfŠf“f^,ìf[fU[fYf}fff...fAç<,đ,²-—,,¾,¾,çB

»•ifTf|f|fg

NECvfŠf“f^,ÉŠÖ,·,é,²Žĵ-âE,²‘Š‘k,ÍANEC Bit-INN,“,æ,Nĭ“-ŽĐŽw‘è,ÌfT[frfX‘<ĈĖû,Ā,“Žó,¯,μ,Ä,č
,Û,·B,Û,½<Zp“l,È“à—e,Ì,²Žĵ-âE,²‘Š‘k,ÍANECfpfVrf“fCf“ftfHf[fVf#f“fZf“f^ [É,²~A—,¾,³,čB

ã<L‘<ĈĖû,Ì“d“b”Ô+AZó•tŽžŠÔ,É,Ā,č,Ä,ÍA[uNECfT[frfX-Ô^ê—•\v,đ,²—,¾,³,čB

fvfŠf“f^,Ìft[fU[fYf}fjf...fAf<à, ,í,¹,Ä,²ŽQAE,,¾,³,čB

,Û,½AfpfVrf“î•ñfT[frfX,đŽg,Ā,ÄANECvfŠf“f^,ÉŠÖ,·,éĀVî•ñ,đ“üžè,·,é,±,Æ,³,Ā,«,Û,·B

Ů,μ,,Íuf+ [fU[fYf}fjf...fAf<v,Ìuî•ñfT[frfX,É,Ā,č,Äv,đŽQAE,μ,Ä,,¾,³,čB

fjXf^f€fCf“fXfg[]f<,Æ,ÍAf|fbfgf[][]fNfT[]fo,©,çPrintAgentf\
ftfgfEjFfA,đfCf“fXfg[]f<,.éêëñ,ÉAfCf“fXfg[]f<,ìĈ`'Ô,đ'Ì,Ô,±,Æ,³,Å,«A»,±
,ÅmfjXf^f€n,đ'Ì'đ,μ,½êëñ,ìfCf“fXfg[]f<•û-@,ì,±,Æ,Å,·B

fqf“fg

f|fbfgf[][]fNfT[]fo,©,çfCf“fXfg[]f<,.é•û-@,É,Â,ç,Ä,ÍAf+[]fU[]fYf}fjf...fAf.“™,đŽQ[]Æ,μ,Ä,,¾,¾,çB

fšfvfšf“fg, ì, ½, ß, Éfn□[fhffBfXfN, É•Ù‘¶, ³, ê, ½^ó□üfhfLf...f□f“fg, ì, ±, Æ, Å, ·□B

«»Ÿ,ìŸ'è,ð-³«ø,É,μ,Äf_fCfAfffO,É-ß,è,Û,·B

'O%ñ,ìÝ'è,ì,Ü,Üf_fCfAf_fO,đ!—¹,μ,Ü,·B

«»Ÿ,ìŸ'è,ð-³«ø,É,μ,Ä""l,ìŸ'èf_fCfAf_fO,É-β,è,Ü,·B

Žw'è,³,ê,½ftfHf<f_,Æ,»,ìÅ'â'l,ÅÝ'è,μAÝ'èf_cfAfffO,É-β,è,Û,·B

1998/3/2 kenji

