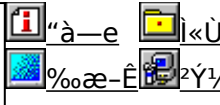


fxf"f`f}マークの説明Of%of€



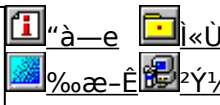
S"Ž®%oiŽĐf f<fR f f<fRxf" f` f} fN UP!

Ⓜ@Ⓜ@Ⓜ\$ⓂⓂF S"Ž®%oiŽĐf f<fR
Ⓜ@Ⓜ@ⓂⓂⓂⓂ@ <http://www.melcoinc.co.jp/>
SeŽü•Ö'•'u,lfpftfH[f}f" fX,đ'a'è,.,éfvf fOf%of€,Á,·ⓂB



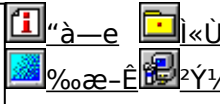
HDBENCH(É°ĀpĀp ½ ĪpYÁ) Ver 2.45

Ⓜ@Ⓜ@Ⓜ\$ⓂⓂF EP82%ü/,©,., Ž
Ⓜ@Ⓜ@ⓂⓂⓂⓂⓂⓂ@ <http://www.lares.dti.ne.jp/~ep82kazu/>
fn[fhfffBfXfNⓂA·`%üæ ACPU,l'¬,³,đ'a'è,.,éfvf fOf%of€,Á,·ⓂB



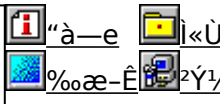
DDBENCH(DirectDrawĪpYÁ) Ver 1.41

Ⓜ@Ⓜ@Ⓜ\$ⓂⓂF EP82%ü/,©,., Ž
Ⓜ@Ⓜ@ⓂⓂⓂⓂⓂⓂⓂ@ <http://www.luice.or.jp/~ep82kazu/>
DirectDraw,l'·`%üæ ¬"x,đ'a'è,.,éfvf fOf%of€,Á,·ⓂB



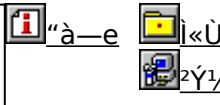
Performance meter for Intel 686 ver 2.1A

Ⓜ@Ⓜ@Ⓜ\$ⓂⓂF Ⓜi,±,¶ⓂjŽⓂⓂA'æŽO<ž•lŽ
Pentium^ÉⓂ~,lCPU,đŽg,Á,½ PC ,lSO·"fⓂf,fŠfAfNfZfX'¬"x,đ'a'è,.,éfvf fOf%of€,Á,·ⓂB



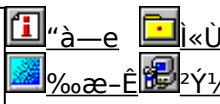
PFM686 —p C%ü•Ī CWSDPMIⓂ@ⓂiDPMI serverⓂi

Ⓜ@Ⓜ@Ⓜ\$ⓂⓂF CE' ⓂⓂF Charles W SandmannⓂ@%ü•'ⓂFⓂi,±,¶ⓂjŽ
pfm686 ver2.0^ÉⓂ~,đ'®Ⓜi,³,¹,é,½,β,É•K—v,ÉDPMI server,Á,·ⓂB



PFM486 Ver.1.77H •]ü•"Á

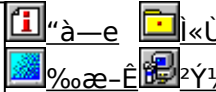
Ⓜ@Ⓜ@Ⓜ\$ⓂⓂF æŽO<ž•l Ž
386 ^ÉⓂ~,l x86 CPU ,đŽg,Á,½ PC ,lSO·"fⓂf,fŠⓂ«"l,đ'a'è,.,éfvf fOf%of€,Á,·ⓂB





f f f S [f x f " f f } [f N CORETEST/97 1.01

@ @ @ \$ @ F ' O " c < X > » Ž

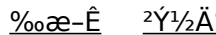


f } f V f " , l f @ f , f Š f A f N f z f X f X f s [f h , ð ' a ' è , . , é f v f [f O f % œ f € , Å , . [B



f O [f € — p f O f % œ f t f B f b f N f x f " f f } [f N f e f X f g GBENCH32 2.0

@ @ @ \$ @ F , Ü , é , , ç Ž

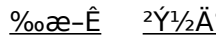


f O f % œ f t f B f b f N , l [« " \ , ð ' a ' è , . , é f v f [f O f % œ f € , Å , . [B



WinGfpftfH [f } f " f X f e f X f g GTEST ver.1.2

@ @ @ \$ @ F , Ü , é , , ç Ž

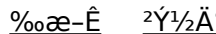


WinG , l f p f t f H [f } f " f X , ð ' a ' è , . , é f v f [f O f % œ f € , Å , . [B

VTBENCH DOS/V Text Video Benchmark Ver. 1.2

@ @ @ \$ @ F - k ' o • q • F Ž

[@ [@ [@ [@ [@ <http://www.cadin.or.jp/users/baxsoft/>



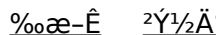
DOS/V , l f e f l f X f g % œ - Ê Š Ö Ą W , l f X f s [f h , ð Ą v ' a , . , é f v f [f O f % œ f € , Å , . [B



S " Ž @ % œ i Ž D f A f C [E f l [[E f f [f ^ < @ Š í f A f v f Š f x f " f

@ @ @ \$ @ F S " Ž @ % œ i Ž D f A f C [E f l [[E f f [f ^ < @ Š í

[@ [@ [@ [@ [@ <http://www.iodata.co.jp/>



Windows 95 [ã , Å Ž À Ü , É f A f v f Š f P [f v f # " , ð Ž À [s , μ , ½ , Æ , « , l f v f X f e f € [« " \ , ð •] % œ ÷ , . , é f v f [f O f % œ f € , Å , . [B



Š”Ž®%oiŽĐ fAfC Efi Eff f^<@Sí Topic for Windows Ver 1.04
 @@SŠ”Ž®%oiŽĐ fAfC Efi Eff f^<@Sí
 @@@@http://www.iodata.co.jp/

“à—e ì«ÙÀp

«»ŸŽg—p,μ,Ä,ç,é Windows fVfXfef€,lfpftfH[f]f“fX,đ‘a’è,μ,½,èA<@“\,l—L-³,đCEŸ,.,.évf fOf%of€,Ä,·B

²Ý½Ä

WHATIDE
 @@S Tom Warren Ž

“à—e ì«ÙÀp

DOSã,ÄIDE,lfN[fhfffBfXfN,lî•ñ,đ•Ž|,.,.évf fOf%of€,Ä,·B

²Ý½Ä

Quantum Data Access Time Benchmark
 @@S Quantum Corporation
 @@@@http://www.quantum.com/

“à—e ì«ÙÀp

fn[fhfffBfXfN,lf[f^fAfNfZfX’-“x,Æ”’-’-“x,đ‘a’è,.,.éxf“f f} [fNfvf fOf%of€,Ä,·B

²Ý½Ä



Diskdrive benchmark on Win32 1.12
 @@S “c—Y“ñŽ
 @@@@http://www.netpassport.or.jp/~wtukapon/

“à—e ì«ÙÀp

Win32ŠÄ««iWindows 95/NT 4.0/NT 3.51j%º,É,“,̄,éAfŠf€ [fofuf<ffffBfA,đ,Ó,.,pfffBfXfNfhf
 %ofCfu,lfpftfH[f]f“fX,đ‘a’è,.,.évf fOf%of€,Ä,·B

%ºæ-É ²Ý½Ä

fm [fg.o.b—pfobfefŠfefXfgfvf fOf%of€ Revision 0.21
 @@S “ä”Vã ~aOŽ

“à—e ì«ÙÀp

%ºæ-É ²Ý½Ä

fm [fgfp]fRf" ,lfofbfefSZ ±ŽžŠÖ,đ'a'è, .éxf" f } [fNfvf]fOf%of€,Ă, ·□B



OpenGL Benchmark

□@□@□\$□□FYoccyŽ□

□@□@□@□@<http://www.bekkoame.or.jp/~yoccy/index.html>

"à—e ì«ÙÀP

%ooæ-Ê ²Ý½Ä

OpenGL,ì□«" \,đ'a'è, .,é,½,ß,lfvf]fOf%of€,Ă, ·□B



OpenGL xYA²Ñ

□@□@□\$□□FĈ'~□□Ĉ ŽÖ Silicon Graphics, Inc. "]□Ú□Afff,□□- ,ä,č Ž□

"à—e ì«ÙÀP

%ooæ-Ê ²Ý½Ä

OpenGL Benchmark,É,Ç□AOpenGL'í%ž,lf\ftfg,ì" @ □ì,É•K—v,Éf%of" f^fCf€f%ofCfuf%ofŠ,Æ□A,» ,ê,ðŽg,Ă,½fff,f %of€,Ă, ·□B



WCPUID.EXE Version 1.2 for Win32


□@□@□\$□□FH.Oda!Ž□

"à—e ì«ÙÀP

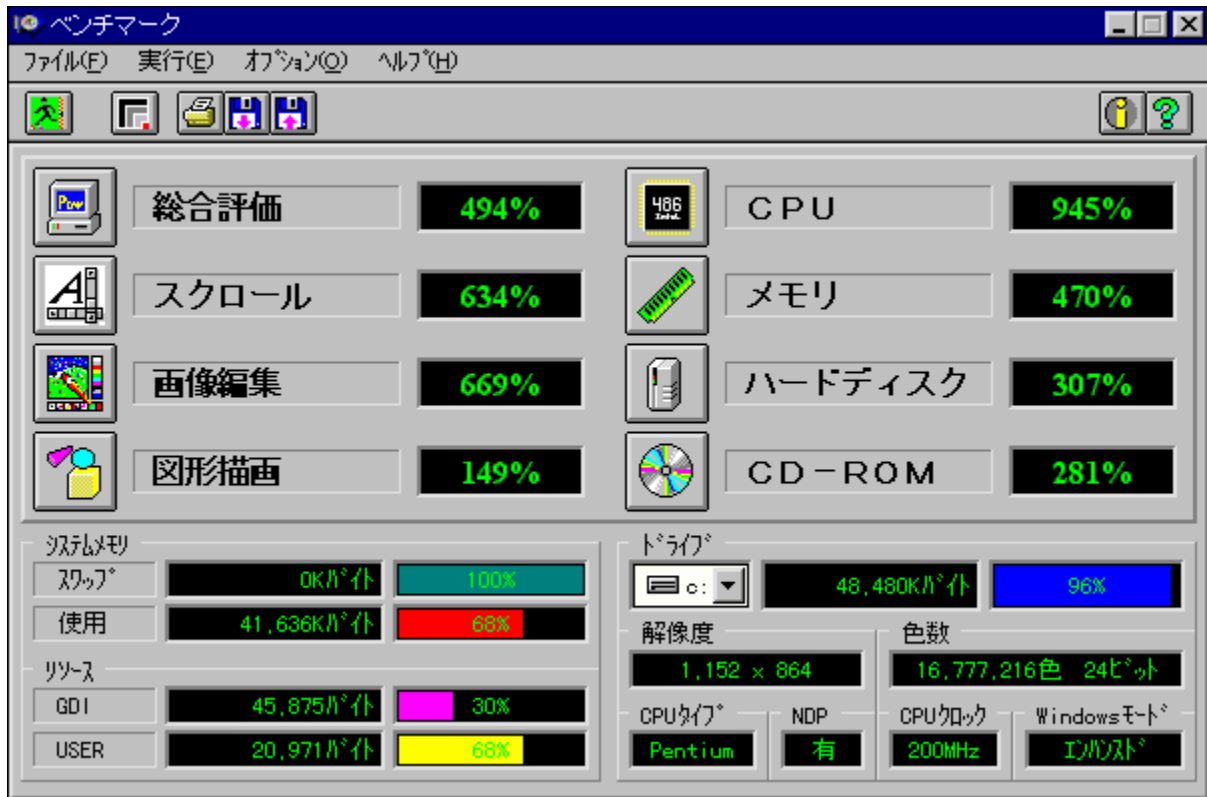
%ooæ-Ê ²Ý½Ä

Windows 95/NT 4.0□ă,Ă□ACPU,lfnf□fbfNžü" g□"□A, ",æ,ñMMXfefNfmf□fWfTf]□[fg,ì—L-³,đ'a'è, .,évf]fOf%of€,Ă, ·□B

Š”Ž®%œiŽĐf[]f<fR f[]f<fRfxf“f`f}[]fN

 fCf“fXfg[]f<,iŽÀ[]s

%œæ-ÊfCf[]fW



Žû~^ftfHf-f_

DISC1:\BENCHMELCO



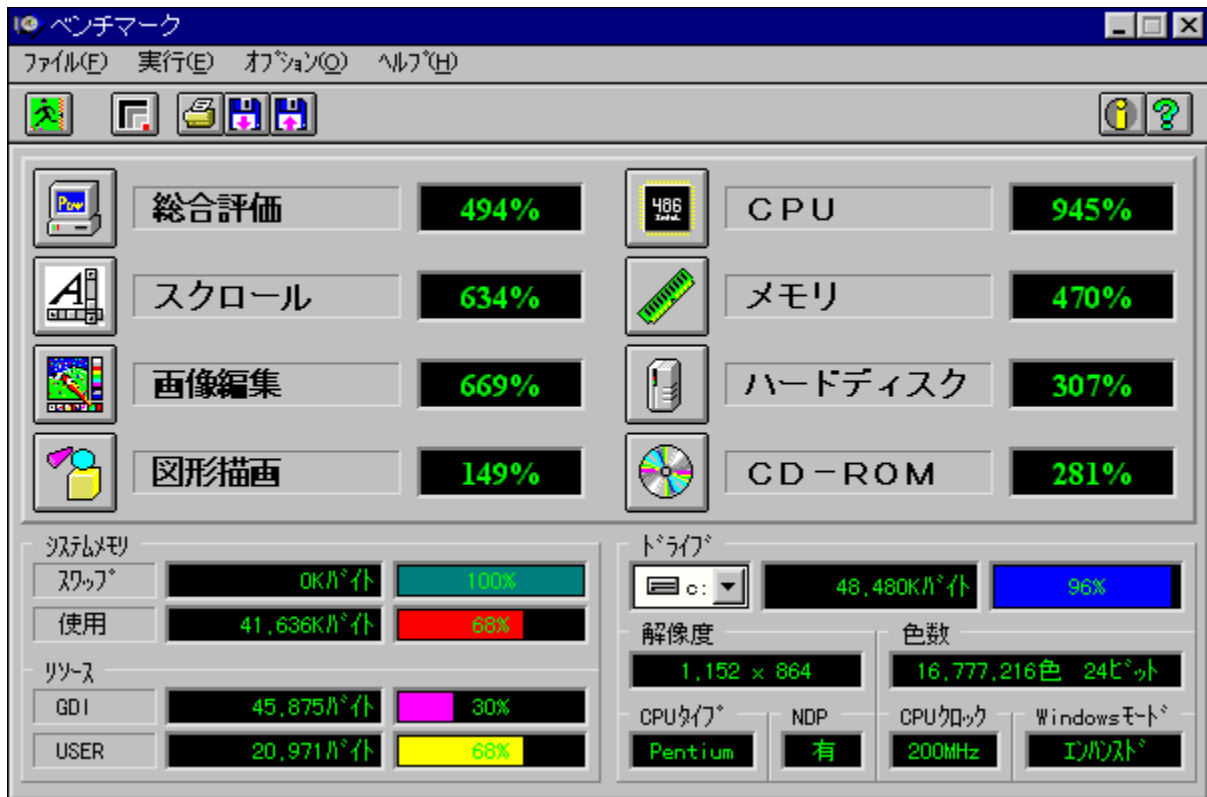
☺☺

Š”Ž®%oiŽĐf☺fR
<http://www.melcoinc.co.jp/>

“à—e

ŠeŽü•Ó•’u,lfpftfH☺f}f“fX,đ‘a’è,.,éfvf☺fOf%of€,Å,·BfXfNf☺☺f<☺A%oæ’œ•`ŽÊ☺A
CPU☺A☺f,fŠ☺Afn☺f[hffBfXfN☺ACD-ROM,ì☺<“\,đ‘a’è,.,é,±,Æ,ª,Å,«,Ü,·☺B

’☺^Ó:Window95,đ,²Žg—p,ì☺ê☺#☺A‘a’è’t,ÉfL☺f{☺☺f[h,“,æ,Ñf}fEfX,ÍŽg—p,μ,È,¢
,Å,,¾,³,¢☺B




ŠeŽü•Ó•'u,İfpftjH[f}f“fX,ð‘è,·,éfvf[fOf%of€,Å,·BfXfNf[f<A%œ‘œ•`ŽÊA
CPUAf[f,fŠAfN[fhfffBfXfNACD-ROM,ì<“\,ð‘è,·,é,±,Æ,ª,Å,«,Ü,·B

'^Ó:Window95,ð,²Žg—p,ìê‡A‘è't,ÉfL[f{[fh,“,æ,Ñf}fEfX,ÍŽg—p,μ,È,ç,Å,-
,³/₄,³,çB

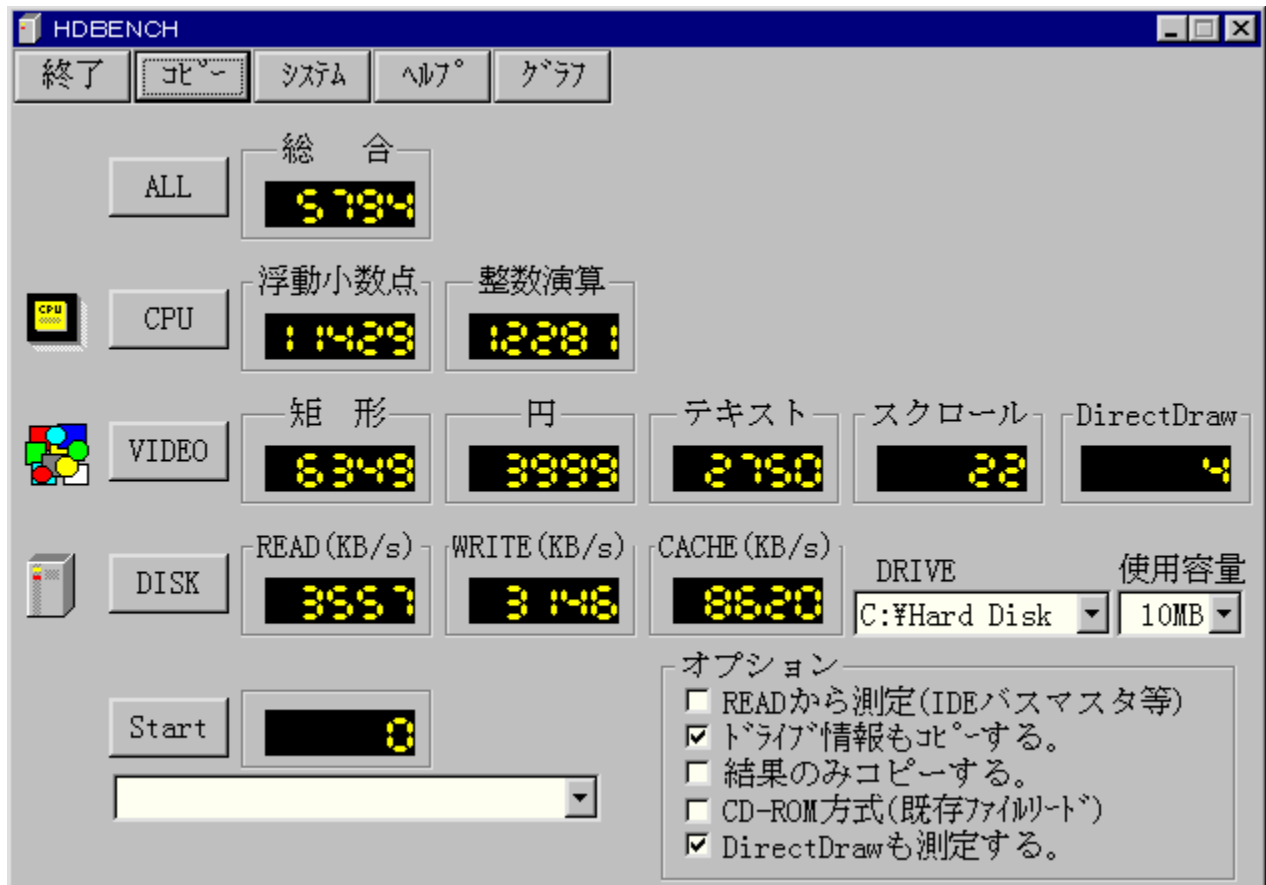
DISC1:\BENCH\MELCO

 fC“fXfg [f<,IŽÀ s

HDBENCH(ハードディスクベンチマーク) Ver 2.45

 INSTALL

インストール



The screenshot shows the HDBENCH application window with the following data:

Category	Sub-category	Value
CPU	総合 (Overall)	5794
	浮動小数点 (Floating Point)	11429
VIDEO	整数演算 (Integer Calculation)	12281
	矩形 (Rectangle)	6349
	円 (Circle)	3999
	テキスト (Text)	2750
	スクロール (Scroll)	22
DISK	DirectDraw	4
	READ (KB/s)	3557
	WRITE (KB/s)	3146
DISK	CACHE (KB/s)	8620
	DRIVE	C:¥Hard Disk
DISK	使用容量 (Usage)	10MB
	Start	0

オプション (Options):

- READから測定 (IDEバスマスタ等)
- ドライブ情報もコピーする。
- 結果のみコピーする。
- CD-ROM方式 (既存ファイルリット)
- DirectDrawも測定する。

インストール



☞\$☞ì

EP82%ü/,©,„ Ž☞

<http://www.lares.dti.ne.jp/~ep82kazu/>

“à—e

fñ☞[fhfffBfXfN☞A•`%œ☞ACPU,ì'¬,³,ð'ª'è,.,évf☞fOf%of€,Å,·☞B^È%º,ì☞€-Ú,É,Å,ç
,Ä,ì'ª'è,ð☞s,É,ç,Û,·☞B
☞Efn☞[fhfffBfXfN
fŠ☞[fh☞Af%ofCf☞g☞AfLfffbfVf...ì1•bŠÔ,ì"']—byte☞"
☞E•`%œ
1•bŠÔ,ì<é☞`☞•%œ~☞•fXfNf☞☞[f<,ì•`%œ%œñ☞"
☞ECPU
1•bŠÔ“-½,è,ì•,“®☞-☞”“_%œ%œŽZ☞•☞®☞”%œ%œŽZ,ì☞EvŽZ%œñ☞”

HDBENCH

終了 ｺﾂﾟｰ ﾏｼｽﾃﾑ ﾊﾙﾌﾟ ｸﾞﾗﾌ

ALL 総合 5794

CPU 浮動小数点 11429 整数演算 12281

VIDEO 矩形 6349 円 3999 テキスト 2750 スクロール 22 DirectDraw 4

DISK READ (KB/s) 3557 WRITE (KB/s) 3146 CACHE (KB/s) 8620 DRIVE C:¥Hard Disk 使用容量 10MB

Start 0

オプション

- READから測定 (IDEバスマスタ等)
- ドライブ情報もｺﾂﾟｰする。
- 結果のみｺﾂﾟｰする。
- CD-ROM方式 (既存ファイルﾄﾞ)
- DirectDrawも測定する。




fn[fhfffBfXfN]A`%æ[ACPU,ì-,³,ð'è,·,évf[fOf%of€,Å,·B^È%º,ì€-Ú,É,Â,ç,Ä,ì'a'è,ðs,È,ç
,Û,·B
[Efn[fhfffBfXfN
fŠ[fh[Af%ofCfG[AfLfffbfVf...ì1•bŠÔ,ì"]'—byte"
[E`%æ
1•bŠÔ,ì<éE`[·%~[·fXfNf[f<,ì`%æ%ñ"
[ECPU
1•bŠÔ"-,½,è,ì,“®[-]“_%%ŽZ[·®]”%%ŽZ,ìEvŽZ%ñ"

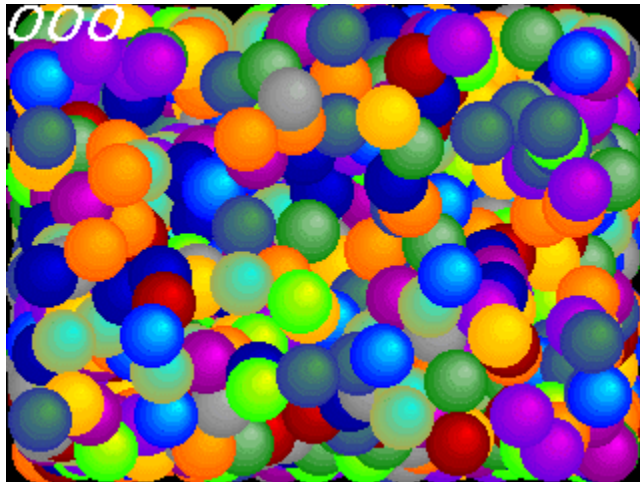
DISC1:\BENCH\HDBE245

 fC“fXfg [f<,iŽÀ s

DDBENCH(DirectDrawÍÞÝÁ) Ver 1.41

 fC“fXfg[]f<,iŽÀ[]s

%œ-ÊfCf[]fW



Žú~^ftfHf<f_

DISC1:\BENCH\DDBEN141



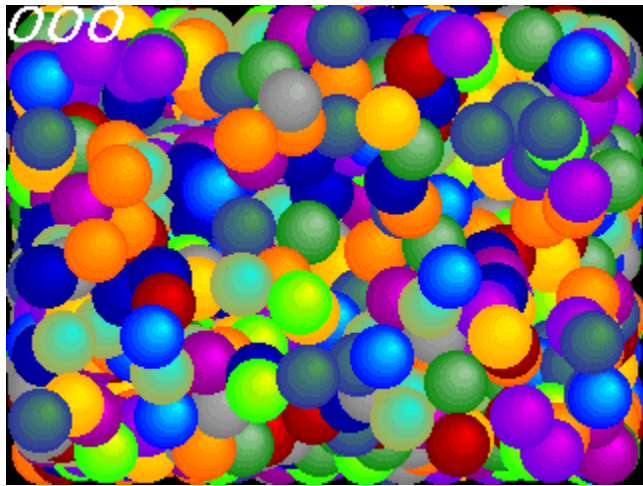
[]\$[]i

EP82%œü/,©,„ Ž[]
<http://www.luice.or.jp/~ep82kazu/>



“à—e

DirectDraw,ì·`%œ’¬“x,ð‘à’è,·,éfvf□fOf%of€,Å,·□BŽÀ□s,·,é,Æ□A2,000-‡,ÌSPRITE,ð•\
Ž|,³,¹,½,Æ,«,ì,P•bŠÔ,ì%œ-Ê□’,«Š·,ì%ñ□”,ð□□ã,É•\Ž|,μ,Ü,·□B
DirectDraw,í□ADISC2,É“ü,Á,Ä,ç,éDirectX,ðfCf“fXfg□[f<,·,é,±,Æ,É,æ,èŽg—p,Å,«,Ü,·□B



DirectDraw,ì`%œ'¬“x,ð'è,·,éfvf[]fOf%of€,Å,·□BŽÀ□s,·,é,Æ□A2,000-‡,ÌSPRITE,ð•\
Ž!,³,¹,½,Æ,«,ì,P•bŚÔ,ì%œ-Ê□',«Š,ì%ñ□”,ð□□ã,É•\Ž!,μ,Ü,·□B
DirectDraw,í□ADISC2,É“ü,Á,Ä,ç,éDirectX,ðfCf“fXfg□[f<,·,é,±,Æ,É,æ,èŽg—p,Å,«,Ü,·□B

DISC1:\BENCH\DDBEN141

 fC“fXfg [f<,IŽÀ s

Performance meter for Intel 686 ver 2.1A

 [_ftf@fCf<,lfRfs\[\]](#)

%oæ-ÊfCf[]fW

```
C:\TEMP>pfm686
-- pfm686 ver2.0 DysanKeihin & (koji) --
-----
|CPU: P54C [GenuineIntel Fam5 Md12 Stp12]|
|-----|
| 133.27[MHz] | [ns/dword] |[CPUclocks]|
|-----+-----|
| E-cache read | 12.106 | 1.613 |
| E-cache write | 44.904 | 5.984 |
| main read | 30.674 | 4.088 |
| main write | 45.183 | 6.022 |
|-----|
```

Žû~^ftfHf·f_

DISC1:\BENCH\PFM68621

□\$□i

□i,±,¶□jŽ□□A'æŽO<ž•lŽ□

“à—e

Pentium^È~ ,ìCPU,đŽg,Á,½ PC ,ìŠO•”f f,fŠfAfNfZfX’¬“x,đ’²’è,·,éfvf fOf%of€,Å,·B



@Ú,μ,ÍADISC1:\BENCH\PFM68621\Pfm686.doc,đ,²—,.,¾,³,čB

```
C:\TEMP>pfm686
```

```
-- pfm686 ver2.0 DysanKeihin & (koji) --
```

```
|CPU: P54C [GenuineIntel Fam5 Md12 Stp12]|
```

```
| 133.27[MHz] | [ns/dword] |[CPUclocks]|
```

```
| E-cache read | 12.106 | 1.613 |
```

```
| E-cache write | 44.904 | 5.984 |
```

```
| main read | 30.674 | 4.088 |
```

```
| main write | 45.183 | 6.022 |
```

Pentium^È~ ,ìCPU,đŽg,Á,½ PC ,ìŠO•"f f,fŠfAfNfZfX'~"x,đ'è,·,éfvf fOf%of€ ,Á,·B



@Ú,µ,íADISC1:\BENCH\PFM68621\Pfm686.doc,đ,²—,.,¾,³,čB

DISC1:\BENCH\PFM68621

 ftf@fCf<,ifRfs[]

PFM686 —p C%ü•i CWSDPMI @ iDPMI server j

 ftf@fc<,lfRfs

Žû~^ftfHf<f_

DISC1:\BENCH\CWSDPMI2

§i

CE´i Charles W Sandmann @%ü•i F i, ±, ¶ j Ž

“à—e

pfm686 ver2.0^È~„đ“®i,^{3,1}é,^{1/2}ß,É•K—v,ÈDPMI server,Å,·B

 <ADIS1:\BENCH\CWSDPMI2\Readme.txt,đ,²—, ,^{3/4},³,çB>

pfm686 ver2.0^È~ ,đ"®i,³,¹,é,¹/₂,ß,É•K—v,ÈDPMI server,Å,·B



@Ú,µ,íADISC1:\BENCH\CWSDPMI2\Readme.txt,đ,²—, ,³/₄,³,çB

DISC1:\BENCH\CWSDPMI2

 ft@fCf<,ifRfs[]

PFM486 Ver.1.77H •]‰œž”Å

fCf“fXfg□[f<,ižÀ□s

‰œ-ÊfCf□□[fW

```
Performance of 486-PC Ver1.77h(C)1992-1995 DysanKeihin
H-----H
| P54C   Frequency   = 19.35 MHz   Machine:AT   v1.77h|
|       CPUID Results = GenuineIntel Fam 5 Mdl 2 Stp12 |
| Ecache Read Time   =4227 ns/dword (...wait, 1mb/s)|
| Ecache Write Time  =4054 ns/dword (...wait, 1mb/s)|
| Memory Read Time   =7835 ns/dword (...wait, 1mb/s)|
| Memory Write Time  = 752 ns/dword (...wait, 5mb/s)|
H-----H
```

žû~^ftfHf·f_

DISC1:\BENCH\PFM_177H

□\$□i

‘æžO<ž•I ž□

“à—e

386 ^È~ ,ì x86 CPU ,đŽg,Á,½ PC ,ìŠ•”f,f,š«”\,đ’è, ,évf fOf%of€
 ,Á,·Bf f, fŠfo [fXfgfŠ [fh Af f, fŠf%ofCf g ASO•”fLfffbfVf...fŠ [fh ASO•”fLfffbfVf...f
 %ofCf g,ì«”\,đ’è, ,é,±,Æ,ª,Á,«,Ü,·B

 [@Ú,μ,Í ADISC1:\BENCH\PFM_177H\README.1ST,đ,²—, ,¾,³,çB](#)

```
Performance of 486-PC Ver1.77h(C)1992-1995 DysanKeihin
H-----H
| P54C   Frequency   = 19.35 MHz   Machine:AT v1.77h|
|   CPUID Results   = GenuineIntel Fam 5 Mdl 2 Stp12 |
| Ecache Read Time  =4227 ns/dword (...wait, 1mb/s)|
| Ecache Write Time =4054 ns/dword (...wait, 1mb/s)|
| Memory Read Time  =7835 ns/dword (...wait, 1mb/s)|
| Memory Write Time = 752 ns/dword (...wait, 5mb/s)|
H-----H
```

386 ^È~ ,ì x86 CPU ,đŽg,Á,½ PC ,İŠO•"f,f,Š«"\,đ'è, ,évf,fOf%of€
,Ä, ·Bf,f,Šfo[fXfgfŠ[fhAf,f,Šf%ofCfgAŠO•"fLfffbfVf...fŠ[fhAŠO•"fLfffbfVf...f
%ofCfg,İ«"\,đ'è, ,é,±,Æ,ª,Ä,«,Ü, ·B

 [@Ú,µ,ÍADISC1:\BENCH\PFM_177H\README.1ST,đ,²—,.,¾,³,čB](#)

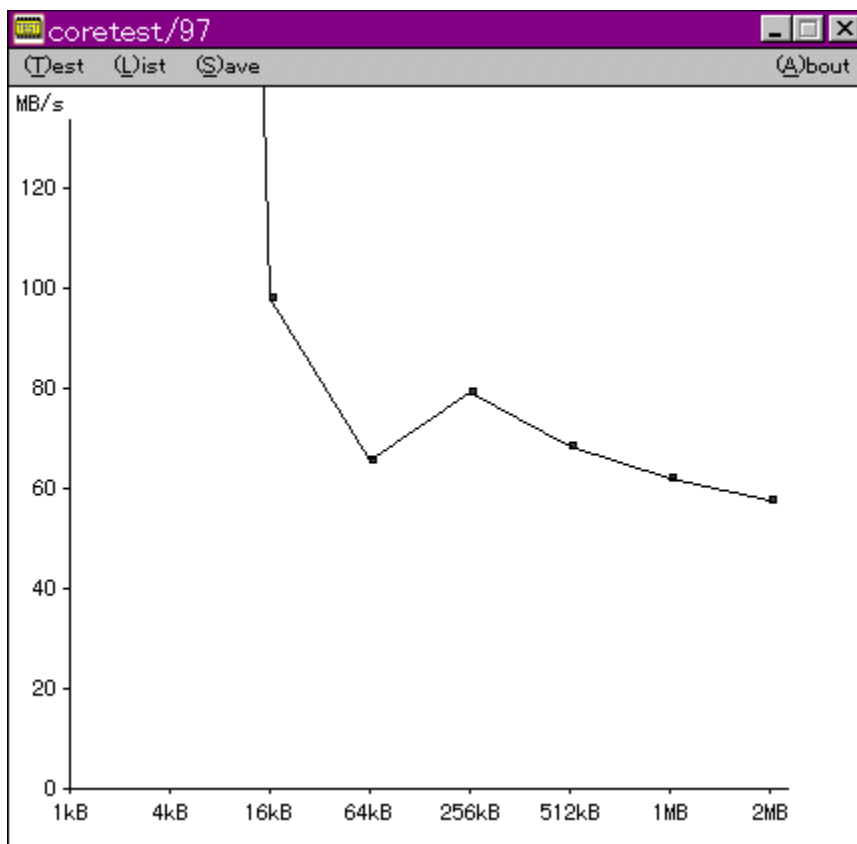
DISC1:\BENCH\PFM_177H

fC“fXfg□lf<,iŽÀ□s

CoreTest/97 1.01

CoreTest/97

CoreTest/97



CoreTest/97

DISC1:\BENCH\CTEST97B

Ⓢ

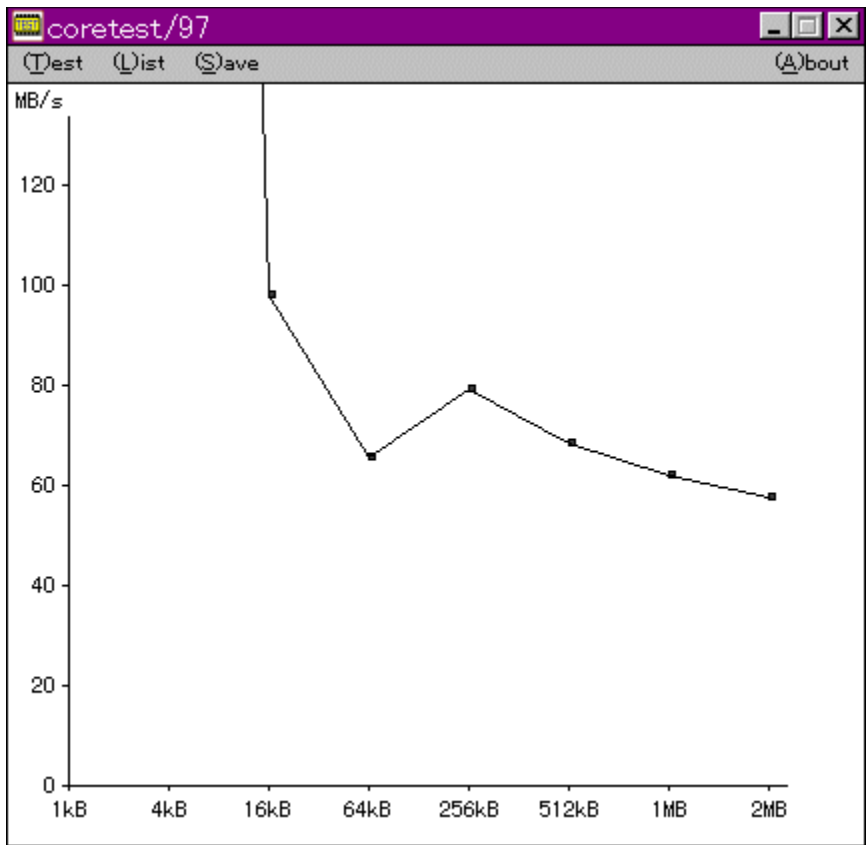
'O" c<X<> Ž

“à—e

f}fVf",lf,fšfAfNfZfXfXfs[fh,đ'ə'è,·,éfvf[]fOf%of€,.Å,·BCEv'ª•",ÉVxD[]i%¼'zfffofCfXfhf
%ofCfo[]j,đŽg—p,μ[]APentium,ìrdtsc-½—ß,đ,Å,©,Á,Ä³Šm,ÈŽžŠŎ'ª'è,đ[]s,È,Á,Ä,ç,Ú,·B



@[]Ú,μ,í[]ADISC1:\BENCH\CTEST97B\README.TXT,đ,²—,.,¾,³,ç[]B



f}fVf“,lf,fŠfAfNfZfXfXfs[fh,đ‘a’è,·,éfvf[fOf%of€,Å,·BCEv‘a•”,ÉVxD[i%o¼‘zfffofCfXfhf
%ofCfo[j,đŽg—p,μAPentium,İrdtsc-½—ß,đ,Å,©,Á,Ä³Šm,ÈŽžŠÔ‘a’è,đ[s,É,Á,Ä,ç,Û,·B



@Ú,μ,ÍADISC1:\BENCH\CTEST97B\README.TXT,đ,²—,¼,³,çB

DISC1:\BENCH\CTEST97B

fC“fXfg□lf<,iŽÀ□s

GBENCH32 2.0

GBENCH32

GBENCH32



GBENCH32

DISC1:\BENCH\GBENCH20

Ⓢ

,Ü,é, ,ç Ž

“à—e

fOf%oftfBfbfN,ì«”\,đ’è,·,éfvf fOf%of€,Å,·B32bit,ìXfvf%ofCfjfGf“fWf”,đ—~—
p,μ,ÄA10•bŠÖ,É%æ-Ê,ì’,«Š,!,đ%½%ñs,È,!,é,©•Ž!,μ,Û,·B



@Ú,μ,ÍADISC1:\BENCH\GBENCH20\README.TXT,đ,²—,.,³/₄,³,çB

GBENCH32 version 2.0

GBENCH
600frames/10sec

ASD32 Performance Test
Presented by Aizawa SoftLab.

Push [P] Key to Pause
EXIT

fOf%oftfBfbfN,ì«"'\,đ'è,·,éfvf[]fOf%of€,\,·B32bit,lfXfvf%ofCfjfGf"fWf",đ—~—
p,μ,ÄA10•bŠÖ,É%œ-Ê,ì',«Š,!,đ%½%ñs,É,!,é,©•\Ž!,μ,Ú,·B

@@Ú,μ,ÍADISC1:\BENCH\GBENCH20\README.TXT,đ,²—, ³/₄,³,çB

DISC1:\BENCH\GBENCH20

fC“fXfg□lf<,iŽÀ□s

WinGfpftfH[f}f“fXfefXfg GTEST ver.1.2

fC“fXfg[f<,iŽÀ[s

%œ-ÊfCf[fW



žû^ftfHf<f_

§

,Ü,é, ,č Ž

à—e

WinG,ìfpftfH[f}f“fX,ð‘a’è,·,éfvf[]fOf%of€,Å,·[]B—L-¼,Èfxf“f`f}[]fNfefXfg,Å, ,é3DBENCH
,Æ“~,¶,æ,æ,ÉCEXCEü,ì[]“l,ð[]o,μ,Ü,·[]B

@[]Ú,μ,,í[]ADISC1:\BENCH\GT12\README.TXT,ð,²—,.,³/₄,³,č[]B



WinG, ìfpftfH[]f}f“fX, ð‘à’è, ·, éfvf[]fOf%of€ , Å, ·[]B—L-¼, Èfxf“f`f}[][fNfefXfg, Å, , é3DBENCH, Æ“` , ¶,
æ, x, ÈCEXCEù, ì[]“’l, ð[]o, μ, Ü, ·[]B

[]@[]Ú, μ, .í[]ADISC1:\BENCH\GT12\README.TXT, ð, ²—, , ¾, ³, ç[]B

DISC1:\BENCH\GT12

fC“fXfg□lf<,iŽÀ□s

VTBENCH DOS/V Text Video Benchmark Ver. 1.2

fCf" fXfg [f<,iŽÀ s

%œ-ÊfCf [fw



Žû^ftfHf·f_

DISC1:\BENCH\VTBENCH12

□\$□ì

-k'°•q•F Ž□

<http://www.cadin.or.jp/users/baxsoft/>

“à—e

DOS/V, ìfēfLfXfg%œ-ÊŠÖŒW, ìfXfs□[fh, ðŒv'ª, ·, éfvf□fOf%œf€, Å, ·□BŠeŽí, ìfhf%œfCfo, ðŽg
—p, μ, ½, Æ, «, É, Ç, Ì, , ç, ç, ì%œ-Ê%œñ, è, ìfXfs□[fh, ª□o, Ā, ç, é, ©, ð'S'Í'I, ÉŒv'ª, μ, Ū, ·□B•¶Žš•\
Ž!□AfXfNf□□[f<, Æ, à, ÉfrffI BIOS, Æ%¼'zVRAM'¼□Ū□', «□ž, Ý, Ì—¼•û, ÅŒv'ª, Å, «, Ū, ·□B

[□@□Ū, μ, .í□ADISC1:\BENCH\VBENCH12\VTBENCH.DOC, ð, ²—, ., ¾, ¾, ç□B](#)

Scroll BIOS VTBENCH 1.2					Scroll BIOS T.Kitamura				
1	獵リ	獵リ	獵リ	高リ					
2	獵リ	獵リ	獵リ	高リ					
3	獵リ	獵リ	獵リ	高リ					
4	獵リ	獵リ	獵リ	高リ					
5	獵リ	獵リ	獵リ	高リ					
6	獵リ	獵リ	獵リ	高リ					
7	獵リ	獵リ	獵リ	高リ					
8	獵リ								
9	獵リ								
10	獵リ								
11	獵リ								
12	獵リ								
13	獵リ								
14	獵リ								
15	獵リ								
16	獵リ								
17	獵リ								
18	獵リ								
19	獵リ								
20	獵リ								
21	獵リ								
22	獵リ								
23	獵リ								

VTBENCH V-TEXT Benchmark by T.Kitamura				
ビットモード' 03h 80字*25行 640*480				
表示フォント 半角:8*19 全角:16*19				

	Direct	BIOS
文字出力	189272字/秒	113563字/秒
スクロール	2228行/秒	19495行/秒
独断偏見評価	21084点	110695点

この結果は「参考」程度にしてください
 結果については責任を負えません(^_^;)
 [F]で結果をファイルに出力します。
 その他のキーで終了 [■]

19	獵リ
20	獵リ
21	獵リ
22	獵リ
23	獵リ

F01	F02	F03	F04	F05	F06	F07	F08	F09	F10	F11	F12
-----	-----	-----	-----	-----	-----	-----	-----	-----	-----	-----	-----

DOS/V,lfefLjXfg%œ-ÊŠÖÆW,lfXfs[fh,ðÆv'ª,;éfvj[fOf%œf€,Å,·BŠeŽí,lfhf%ofCfo,ðŽg—
p,μ,½,Æ,«,É,Ç,Ì,,ç,ç,ì%œ-Ê%œñ,è,lfXfs[fh,ªo,Å,ç,é,©,ð'Š'Í"l,ÉÆv'ª,μ,Û,·B•ŹŠ•\
Ž!AfXfNf[fç,Æ,à,ÉfrffI BIOS,Æ%¼'zVRAM'¼Ú,«ž,Ý,ì¼•û,ÅÆv'ª,Å,«,Û,·B

@Ú,μ,íADISC1:\BENCH\VBENCH12\VTBENCH.DOC,ð,²—,¾,¾,çB

DISC1:\BENCH\BENCH12

fC“fXfg□lf<,iŽÀ□s

Š”Ž®%œiŽĐ fAfC□Efi□□Efi□□f^<@Ší fAfvfŠfxf“f`

fCf“fXfg□□f<,iŽÀ□s

%œæ-ÊfCf□□□fW



Žû~^ftfHf<f_

DISC1:\BENCH\WKAPB

□\$□ì

Š”Ž®%oiŽĐ fAfC□Efl□□Efff□f^<@Ší
<http://www.iodata.co.jp/>

“à—e

Windows 95□ã,ÅŽÀ□Ù,ÉfAfvfŠfP□[fVf†f” ,đŽÀ□s,μ,½,Æ,«,ìfVfXfef€□«”\,đ•]‰zi,·,évf□fOf
‰of€,Å,·□BfAfvfŠfP□[fVf†f” ,đŽg—p,μ,Åfxf“f`f}□[fN,đŽæ,é,½,ß□Af`f...
□[fjf“fO,đ□s,É,¤□ê□†,ÉŽÀ□Ù,ìŽg—
pŽž,É,Ç,ê,¾,~→“x,^aCEü□ã,·,é,ì,©,^a□A”ãŠr“l•^a,©,è,â,·,,È,Á,Ä,ç,Ü,·□B
‘a’è□€-Ú□F“d’ì,Åfxf“f`f}□[fN□Af□f,’ ,Åfxf“f`f}□[fN□AfyfCf“fg,Åfxf“f`f}□[fN

アプリベンチ

クリップボードへコピー	テキストファイルで保存	測定項目の編集
測定項目の保存	測定項目の呼び出し	測定精度の選択
警告の設定	表示位置の設定	表示モードの選択
ヘルプビックの検索	バージョン情報	閉じる

全項目の測定	13251	
電卓でベンチマーク	6060	
メモ帳でベンチマーク	6372	
ペイントでベンチマーク	16063	

Windows 95 ĀŽÀÛ,ÉfAfvfŠfP[fVf#f",đŽÀ[s,μ,½,Æ,«,lfVfXfef€«"\\,đ•]‰º,·,éfvf[fOf%of€
,Ā,·BfAfvfŠfP[fVf#f",đŽg—p,μ,Āfxf"f`f}[]fN,đŽæ,é,½,βAf`f...
[]fjf"fO,đ[s,È,κé#f,ÉŽÀÛ,lŽg—pŽž,É,Ç,ê,¾,~'~"x,ªEüã,·,é,ì,©,ªA"äŠr"l•ª,©,è,â,·,-
,É,Ā,Ā,ç,Û,·B
'ª`è€-ÚF"d`ì,Āfxf"f`f}[]fN[Af[]f,' ,Āfxf"f`f}[]fN[AfyfCf"fg,Āfxf"f`f}[]fN

DISC1:\BENCH\WKAPB

fC“fXfg□lf<,iŽÀ□s

Š”Ž®%oiŽĐ fAfC□Efi□□Efi□□f^<@Ší Topic for Windows Ver 1.04

ftf@fCf<,lfRfs□□

Žú~^ftfHf<f_

DISC1:\BENCH\TOPICWIN

□\$□ì

Š”Ž®%oiŽĐ fAfC□Efi□□Efi□□f^<@Ší
<http://www.iodata.co.jp/>

“à—e

Œ»□ÝŽg—p,μ,Ä,ç,é Windows fVfXfef€,lfpftfH□□f}f“fX,đ‘à’è,μ,½,è□A<@“\,ì—L-
³,đŒÿ□,·,éfvf□fOf%of€,Ä,·□B
‘à’è□€—Ú□FfOf%ofBfbfN□AffWf^f<frfff□Af□f,fŠ□AffBfXfNfhf
%ofCfu□Afvf□fZfbfT□Af□□fo□□f□□AfTfEf“fh
,±,lfvf□fOf%of€,íWindows 3.1□ê—p,Ä,·□BWindows 95,Ä,í“@□ì,μ,Ü,¹,ñ□B

«»ŸŽg—p,μ,Ä,ç,é Windows fVfXfef€,ìpftfH[f}f“fX,ð‘à’è,μ,½,èA<@”\,ì—L-
³,ðŸŸ,·,·,éfvf[fOf%of€,Ä,·B
‘à’è€-ÚFfOf%oftfBfbfN[AffWf^f<frfffi[Af[f,fŠ[AffBfXfNfhf
%ofCfu[Afvf[fZfbfT[Afi[fof[fif<[AfTfEf“fh
,±,lfvf[fOf%of€,lWindows 3.1ê—p,Ä,·BWindows 95,Ä,í“@ì,μ,Ü,¹,ñB

DISC1:\BENCH\TOPICWIN

ft@fC<,lfRfs[]

WHATIDE

fCf“fXfg□[f<,iŽÀ□s

Žû~^ftfHf<f_

DISC1:\BENCH\WHATIDE

□\$□ì

Tom Warren Ž□

“à—e

DOS□ă,ÅIDE,ìfn□[fhfffBfXfN,ì□î•ñ,đ•\Ž!,·,éfvf□fOf%of€
,Å,·□BfVfŠf“f_□[□”□Afwfbfh□”□A1fgf%ofbfN, ,½,è,ìfZfNf^□”□AfZfNf^fofbftf@fTfCfY□A^è
%oñ,ìŠ,,,è□ž,Ÿ,É,“, , ,éZfNf^□”(fuf□fbfNf,□[fh),ÆECCfofCfg□”,đ•\Ž!,μ,Ü,·□B

□@□Ú,μ,·í□ADISC1:\BENCH\WHATIDE,đ,²—,.,¾,³,¢□B

DOS ä, ÅIDE, \fn [fhfffBfXfN, i i • ñ, ð • \Ž!, ., éfvf [fOf%of€ , Å, . BfvfŠf“f_ [[“ Afwfbfh “ A1fgf
%ofbfN, , ½, è, ifZfNf^ “ AfZfNf^ fofbftf@fTfCfY A^ è
%oñ, iŠ,, èž, Ý, É, ; , , éfZfNf^ “ (fuf [bfNf, [fh), ÆECCfofCfg “, ð • \Ž!, μ, Ü, . B

@ Ú, μ, í ADISC1:\BENCH\WHATIDE, ð, ² —, , ¾, ³, ç B

DISC1:\BENCH\WHATIDE

fC“fXfg□lf<,iŽÀ□s

Quantum Data Access Time Benchmark

ftf@fCf<,lfRfs[]

Žû~^ftfHf<f_

DISC1:\BENCH\QBENCH

[]\$[]

Quantum Corporation
<http://www.quantum.com/>

“à—e

fn[]fhfffBfXfN,ìff[]f^fAfNfZfX’-“x,Æ”]’-’-“x,đ’è,·,éxf“f`f}[]fNfvf[]fOf%of€,Å,·[]B

NEC PC-9800fvfŠ[]fY,Á,í[]³[]í,É“@[]ì,μ,Ü,¹,ñ[]B[]Á^«,ì[]ê[]f[]fn[]fhfffBfXfN,đ”j’¹,·,é,“,»,ê,², ,é,ì,Á[]APC-9800fvfŠ[]fY,Á,í-{}fvf[]fOf%of€,đCE^,μ,ÅŽg—p,μ,É,ç,Á,,¾,³,ç[]B

fn[fhfffBfXfN,ìff[f^fAfNfZfX'¬“x,Æ“]’—’¬“x,ð’è,·,éxf“f`f} [fNfvf[fOf%of€,Å,·B

NEC PC-

9800fvfŠ [fY,Å,í³í,É“ @ì,μ,Û,¹,ñBÅ^«,ìê:f n[fhfffBfXfN,ð”j¹,·,é,“,» ,ê,ª, ,é,ì,Å
APC-9800fvfŠ [fY,Å,í- {fvf[fOf%of€,ðCE^,μ,ÅZg—p,μ,É,ç,Å,,¾,³,çB

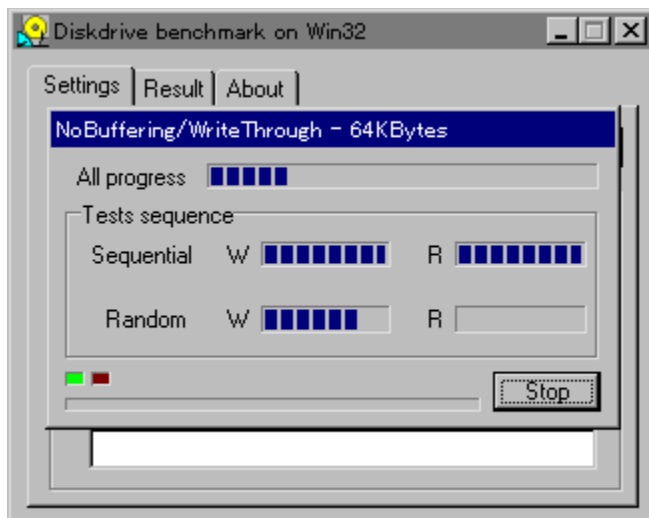
DISC1:\BENCH\QBENCH

ft@fC<,lfRfs[]

Diskdrive benchmark on Win32 1.12

fCf“fXfg□[f<,iŽÀ□s

%oœ-ÊfCf□□[fW



Žû~^ftfHf<f_

DISC1:\BENCH\DBNCH112

□\$□ì

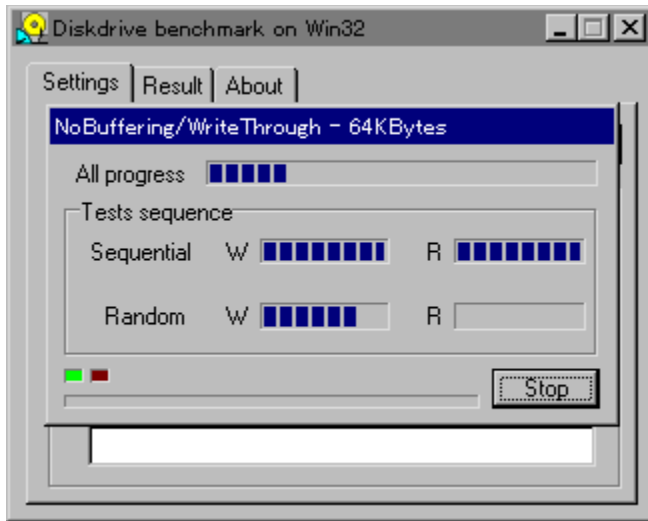
'É" c—Y"ňŽ

<http://www.netpassport.or.jp/~wtukapon/>

“à—e

Win32ŠÂ««iWindows 95/NT 4.0/NT 3.51j%º,É,“,̄,éAfŠf€[f ofuf<f[]ffBfA,đ,Ó,-
,pffBfXfNfhf%ofCfu,lfpftfH[f}f“fX,đ‘a’è,,:évfj[]fOf%of€,Å,·[]B

[@Ú,μ,íADISC1:\BENCH\DBNCH112\BENCH32.HTM,đ,²—,.,³/₄,³,ç\[\]B](#)



Win32ŠÅ««iWindows 95/NT 4.0/NT 3.51j%º,É,¨,¯,éAfŠf€[fofuf<f[]ffBfA,ð,Ó,,bfffBfXfNfhf
%ofCfu,İfpftfH[f}f“fX,ð‘a’è,·,évf[]fOf%of€,Å,·B

@Ú,µ,ÍADISC1:\BENCH\BNCH112\BENCH32.HTM,ð,²—,.,³/₄,³,çB

DISC1:\BENCH\DBNCH112

fC“fXfg□lf<,iŽÀ□s

testbat.exe - test battery performance version 0.21

testbat.exe

testbat.exe

```
testbat.exe - test battery performance version 0.21
Copyright (c) 1994, 1995 Pierre. (Kazuhiro Inoue), All rights reserved.
```

```
Now ready to execute battery test.
Please disconnect external power supply.
BatteryPerformance test is started!
```

0	03:41:38	99
1	03:42:38	97
2	03:43:38	95
3	03:44:38	93
4	03:45:38	90
5	03:46:38	88
6	03:47:38	86
7	03:48:38	84
8	03:49:38	82

```
03:50:25
```

testbat.exe

DISC1:\BENCH\TESTBAT

□\$□ì

^ä"V□ã ~a□OŽ□

“à—e

fm□[fgfpf\frf“ ,\fofbfefšž□±žžšô,ð'ª'è,·,éxf“f`f}□[fNfvf□fOf%of€,Å,·□B

□@□ú.μ.í□ADISC1:\BENCH\TESTBAT\TESTBAT.DOC,ð,²—,.,³/₄,³,ç□B

```
testbat.exe - test battery performance version 0.21  
Copyright (c) 1994, 1995 Pierre. (Kazuhiro Inoue), All rights reserved.
```

```
Now ready to execute battery test.  
Please disconnect external power supply.  
BatteryPerformance test is started!
```

0	03:41:38	99
1	03:42:38	97
2	03:43:38	95
3	03:44:38	93
4	03:45:38	90
5	03:46:38	88
6	03:47:38	86
7	03:48:38	84
8	03:49:38	82

03:50:25

fm [fgfpf\frf", lfofbfefšž ±žžšô, ð'è, .éxf" f`f} [fNfvf Of%of€ , Å, .B

@ú, μ, í ADISC1:\BENCH\TESTBAT\TESTBAT.DOC, ð, 2—, , 3/4, 3, ç B

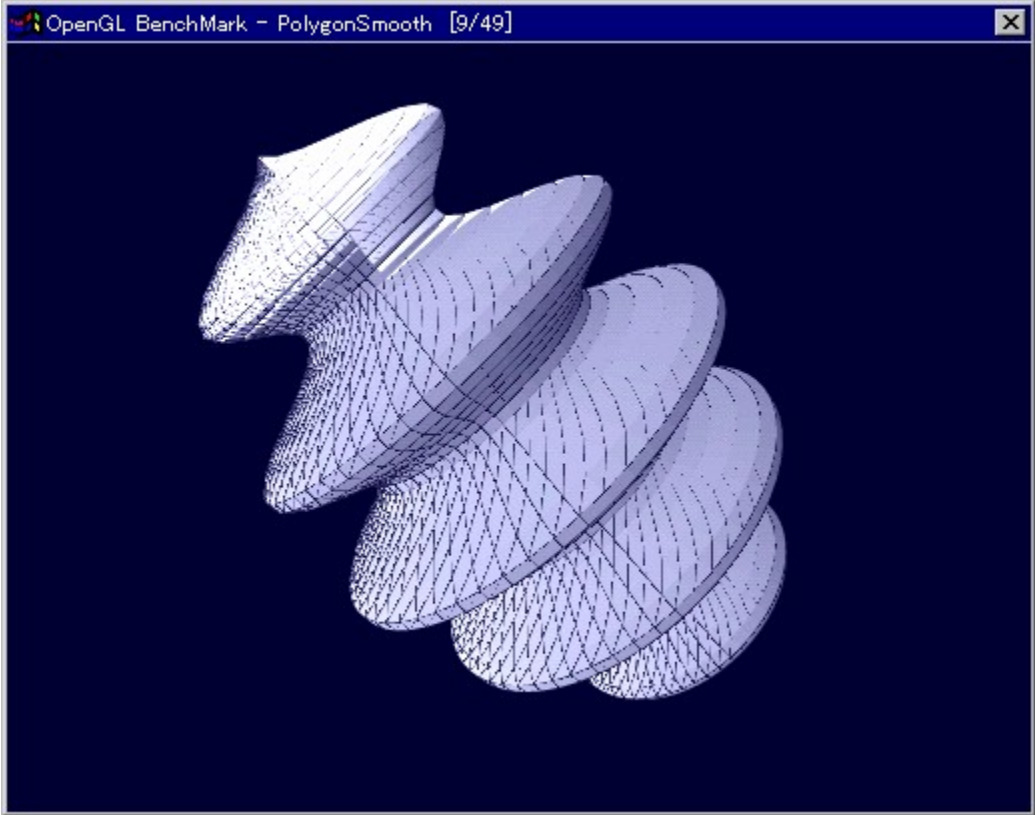
DISC1:\BENCH\TESTBAT

ft@fC<,lfRfs[]

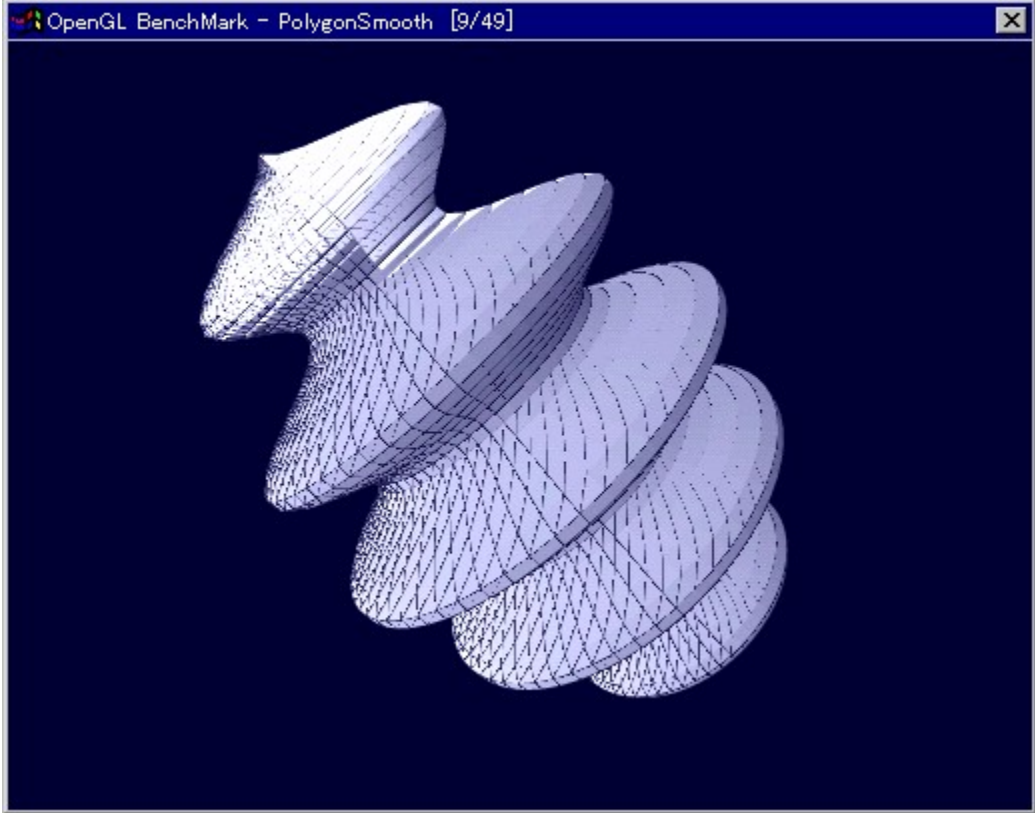
OpenGL Benchmark

fCf“fXfg□[f<,iŽÀ□s

%œ-ÊfCf□□[fW



Žû~^ftfHf<f_



OpenGL, ì«" \, ð'ª'è, ·, é, ½, ß, ìfvf ìfOf%of€ , Å, · ìB

ì@ìú, ì, í ìADISC1:\BENCH\OGLB151\README_J.TXT, ð, ²—, ¾, ³, ç ìB

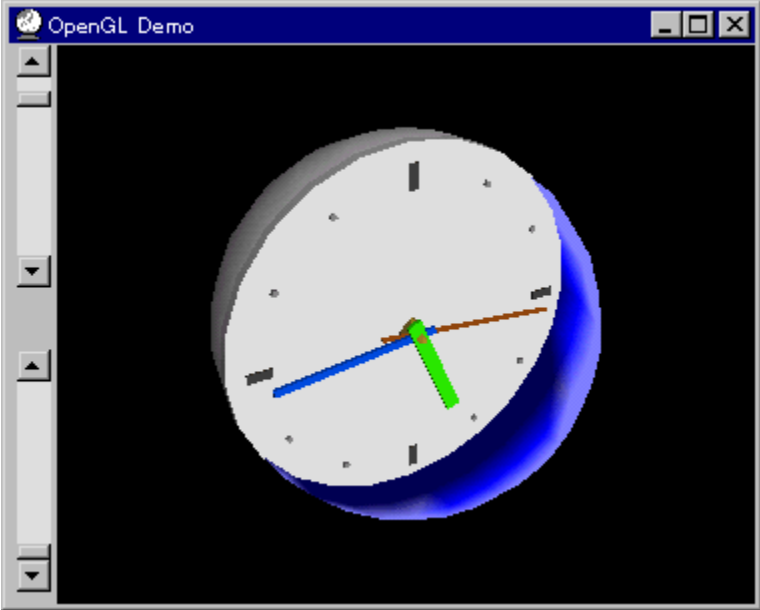
DISC1:\BENCH\OGLB151I

fC“fXfg□lf<,iŽÀ□s

OpenGL xYÀ²Ñ

fCf“fXfg□[f<,iŽÀ□s

%œ-ÊfCf□□[fW



Žû~^ftfHf<f_

DISC1:\BENCH\OPENGL11

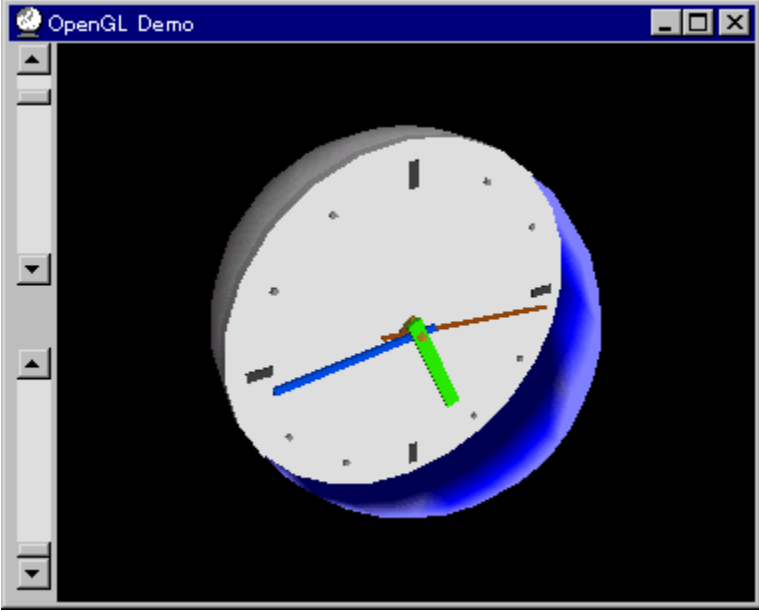
§

© Silicon Graphics, Inc. "A", ä, ç Ž

à—e

OpenGL Benchmark, OpenGL "i" ®, É•K—v, È%of“f^fCf€f%ofCfuf
%ofŠ, ÆA, » , è, ð Žg, Á, ½ff, fvjOf%of€, Á, ·BfCf“fXfg[f<, ·, é, ±
, Æ, É, æ, èADLL, afVfXfef€ftfHf<f_ , ÉfRfs[, ³, è, Û, ·B

**OpenGL, iWindows NT 4.0 , , æ, Ñfo[fWf†f“4.00.950B^È~ , iWindows 95i, ç
, í, ä, éOSR2j, É, í•W€, ÁfCf“fXfg[f<, ³, è, Á, ç
, Û, ·Bfo[fWf†f“4.00.950a^È‘O, iWindows 95, ð, “Žg, ç
, ié†, iYAfCf“fXfg[f<, ðs, È, Á, Ä, , ¾, ³, çB, “Žg, ç
, iWindows, ifo[fWf†f“ , iAfRf“fgf[f<fpjlf<, ifvXfef€, ifvfpfefB, ÅŠm”F, ·, é, ±
, Æ, a, Á, <, Û, ·B**



OpenGL Benchmark, È, Ç, A OpenGL 'î%ž, ìftfg, ì" @ ì, È•K—v, Èf%of“f^fCf€f%ofCfuf
%ofŠ, Æ, A, » , è, ðŽg, Å, ½fff, fvffOf%of€, Å, ·BfCf“fXfg[]f<, ·, é, ±
, Æ, È, æ, è, ADLL, ðVfXfef€ftfHf<f_, ÈfRfs[][, ð, Û, ·B

**OpenGL, í, A Windows NT 4.0 , , æ, Ñfo[]fWf†f“4.00.950B^È~ , ìWindows 95, ç
, í, ä, éOSR2, j, È, í•W, €, ÅfCf“fXfg[]f<, ð, é, Å, ç, Û, ·Bfo[]fWf†f“4.00.950a^È'O, ìWindows
95, ð, Žg, ç, ìê†, ì, Y, AfCf“fXfg[]f<, ðs, È, Å, Å, , ¾, ð, ç, B, Žg, ç
, ìWindows, ìfo[]fWf†f“ , í, AfRf“fgf[]f<fpf<, ìVfXfef€, ìvf[]pfefB, ÅŠm”F, ·, é, ±
, Æ, ð, Å, <, Û, ·B**

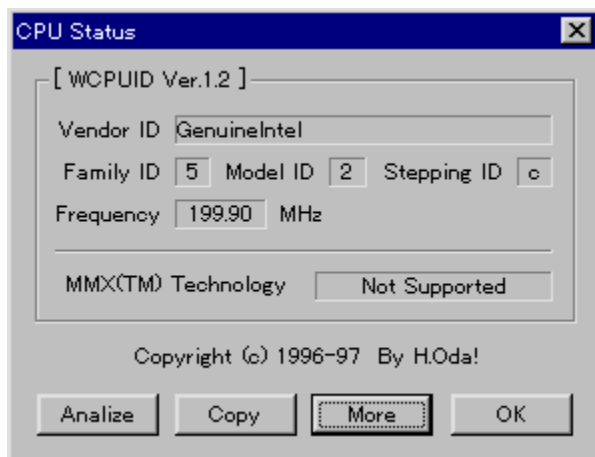
DISC1:\BENCH\OPENGL11

fC“fXfg□lf<,iŽÀ□s

WCPUID.EXE Version 1.2 for Win32

fc"fxfg[f<,ižÀs

%œ-Êfc[fW



žû~^ftfHf.f_

DISC1:\BENCH\WCPU120

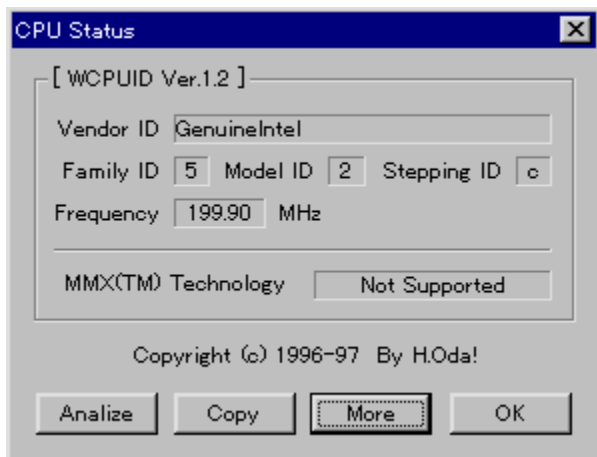
□\$□ì

H.Oda!ž□

“à—e

Windows 95/NT 4.0 Ā ACPU, ĩNf ĩbfNžü”g ĩ” ĩA, ĩ, æ, ÑMMXfĕfNfmf ĩfWfTf ĩ ĩfg, ĩ—L-
³, đ’ a’ è, ., éfvf ĩfOf%ofĕ, Ā, . ĩB

ĩ@ ĩÚ, ĩ, ĩ ĩADISC1:\BENCH\WCPU120\WCPUID.TXT, đ, ²—, ., ³/4, ³, ĕ ĩB




Windows 95/NT 4.0 Ā ACPU, ĩNf ĩbfNŽü”g”A, ”, æ, ŃMMXfefNfmf ĩWfTf ĩ ĩfg, ĩ—L-
³, ð’è, ., évf ĩfOf%of€Ā, ·B

ĩ@ĩÚ.ĩ.ĩ ĩADISC1:\BENCH\WCPU120\WCPUID.TXT, ð,²—, ,³/4,³, ĩ ĩB

DISC1:\BENCH\WCPU120

fC“fXfg□lf<,iŽÀ□s

☐@f☐fjf...☐l,ìžg,ç•û  目次へ戻る

☐@^ê—•\,ìše•"•ª,đfNfŠfbfN,·,é,±,Æ,É,æ,è☐A,» ,ìf\ftfg,ì☐î•ñ,đ•\
Ž!,μ,½,èfCf“fXfg☐[f<,đ☐s,É,α,±,Æ,ª,Â,« ,Ü,·☐B

☐@Še•"•ª,É,Â,ç,Ä,ì☐à-¾,đ,²—,É,È,è,½,ç%ó☐Š,đfNfŠfbfN,μ,Ä,,¾,³,ç☐B



f\ftfgEjFfA^fCfç< **NEW!**

☐ižO¥'ñ<Ÿç³-¼

☐@☐@☐@☐@<http://www.impress.co.jp/>

“à—e

ì«ÜÀp

%œ-Ê

²Ÿ½Ä

,±,ìf\ftfgEjFfA,ìŠT—v,Â,·

,±,ìf\ftfgfEjFfA,ìÐ%ôî•¶,ð•\Ž|,³,ê,Û,·□B

,±,ìfvtfgfEjFfA,ªŽû~^,³,ê,Ä,ç,éftfHf<f_-¼,ð•\Ži,³,ê,Û,·□B,³,ç,ÉftfHf<f_-¼fNfŠfbfN,·,é,Æ□A•\
Ži,³,ê,Ä,ç,éftfHf<f_-ªŠj,©,ê,Û,·□B
□@Žg,çŠµ,ê,½fc□[f<,Ä,ìfCf“fXfg□[f<,â□AfCf“fXfg□[f<‘O,É•t’®,ìhflf...f□“fgftf@fCf<,ð,²—
,É,É,é□é□‡,É•Ö—,Ä,·□B

fCf“fXfg[]f<,ð[]s,ꝛ^x,lf{f^f“,ð•Ž!,μ,Û,·[]B
,³,ç,Éf{f^f“,ðfNfŠfbfN,·,é,Æ[]AfCf“fXfg[]f<,ª[]s,È,í,ê,Û,·[]B
EXECUTE fZfbfgfAfbfvfvf[]Of%of€ª<N“® ,µf\ftfgfEfffA,lfCf“fXfg[]f<,ª[]s,È,í,ê,Û,·[]B

fpf[][]fCf“fXfg[]f%o,Å\ftfgfEfffA,ªfCf“fXfg[]f<,³,êfvf[]fOf
%of€fOf<[]fv,ì[]-[]AfXf^[]fgf[]ff...[][.Ö,ì“o~^,ð[]s,È,í,ê,Û,·[]B

ftf@fCf<,ªCD-ROM,©,çfRfs[][,³,ê,Û,·[]B

fNfŠfbfN,·,é,ÆA,±,lf\ftfg,ìD%oîfy[fW,a•\Ž|,³,ê,Ü,·B

fNfŠfbfN,·,é,ÆA,±,lf\ftfg,ìD%oîfy[fW,a•\Ž|,³,ê,Ü,·B

fjftfgfEjFfA,ìižÒ,â'ñ<ÿ,à,Æ,ìfCf“f^[]fjfbfg[]ă,ìfz[]f€fy[]fW,ìURLfAfhfƒfX,Å,·B,±,±,
,đfNfŠfbfN,·,é,Æ[]AWWWfuf%ofEfU,â<N“®,³,êižÒ,ìfz[]f€fy[]fW,ÉfWfff“fv,μ,Û,·B

V<K E X V Ž ů ~ ^ Ž í • Ê , ð Ž ! , μ , Ů , •
NEW! -{ Ž □ □ % ů Ž ů ~ ^ , ÷ } \ / t f g , Å , • □ B

‘ O % ů ñ Ž ů ~ ^ Ą ě □ A f o □ [f W f t f “ f A f b f v , μ , ½ \ / t f g , Å , • □ B

fCf“fXfg□[f<—pf{f^f“

EXECUTE fZfbfgfAfbfvfvf□fOf%of€,^a<N“® ,µf\ftfgfEfFfA,lfCf“fXfg□[f<, ^a□s,È,í,ê,Û,·□B

fCf“fXfg□[f%o,Åf\ftfgfEfFfA,ðfCf“fXfg□[f<,µfvf□fOf%of€fOf<□[fv,ì□□¬□AfXf^□[fgf□fjf...
□[.Ö,|“o~^, ^a□s,È,í,ê,Û,·□B

ftf@fCf<, ^aCD-ROM, ©,çRfs□[, ³,ê,Û,·□B

fCf“fXfg[]f<-pf{f^f“

EXECUTE

fZfbfgfAfbfvfvf[]fOf%of€,^a<N“® ,μf\
ftfgfEfFfA,lfCf“fXfg[]f<,^as,È,í,ê,Û,·[]B
fCf“fXfg[]f%o,Å\ftfgfEfFfA,đfCf“fXfg[]f<,μfvf[]fOf
%of€fOf<[]fv,ì[]-[]AfXf^[]fgf[]jf...[][,Ö,ì“o~^,^as,È,í,ê,Û,·[]B

ftf@fCf<,^aCD-ROM,©,çfRfs[][,³,ê,Û,·[]B

fhfLj...f[]f“fg•\Ž!f{f^f“

fhfLj...f[]f“fgftf@fCf<,ì“à—e,đ[]ê—pfrf...[]fA,Å•\Ž!,μ,Û,·[]B

