

## WinZip Assistf`fjf...`[

ŽŸ,ì,€-Ú,©,ç,Ç,ê,©,ď'l,ň,Å%º,³,č`B

- [WinZipf`f...`\[f^`\[](#)
- [WinZip,lfCf`fXfg`\[f<](#)
- [,²`•¶•û-@](#)
- [f%ºfCfZf`fX](#)
- [FAQ\(,æ,, ,éŽ¿-â,Æ%ºň`š\)](#)
- [fAfbfvff`\[fg`î•ň](#)



## fAfbfvff [fg]iñ

### WinZip 6.2,É, , ,é•iX“ \_

- %ođ“€ftfHf<f\_ ,iŽw'è,ÅA□ufffXfNfgfbfv□v,È,C“ú–{CEè,²%o», ,È,,É,Á,½□BftfHf“fg,ì□Ý'è,²•Ú'¶,Å,«,é,æ,±,É,È,Á,½□B'□'Ó□l,±,ì-â'è,É,Á,ç,Ä,í□AŠ'“S,É“ú–{CEè,ìftf@fCf<-¼,²Žg,ì,é,æ,±,É,È,Á,½,í, ,Å,í, ,è,Ü,¹,ñ□BFAQ,đ,²—%o²,³,ç□B

### WinZip 6.2,É, , ,é•iX“ \_

- UUencoded, XXencoded, BinHex, MIMEftf@fCf< (base64, plain/text, or quoted-printable),đŠ],,±,Æ,²,Å,«,Ü,·□B,±,è,ç,ìftf@fCf<,íFile/Openf\_fCfAf□fOf{fbfNfX□A, ,é,ç,ìfhf %ofbfOfAf“fhfhf□fbfv,É,æ,èš],,±,Æ,²,Å,«,Ü,·□B,Ü,½□'CEÉftf@fCf<,đfR□[fh %o», ,é,É,íActionsf□fjf...□[,ìUUencodefRf}f“fh,ÅŠÉ'P,É,Å,«,Ü,·□B
- fc□[f<fo□[ ,É“Favorite”f{f^f“□A, ,æ,ÑFile□fjf...□[fšXfg,ÉFavorite ZipFoldersf□fjf...□[ ,²C %oÅ,³,è,Ü,µ,½□B,±,è,Å, “<C,É“ú,è,ìftfHf<f\_□[“à,ìZIPftf@fCf<,đ“ú•t□±,Å'S,ÅfšXfg,É,µ,Ü,·□B
- ZIPftf@fCf<,ÉfpfXf□□[fh•ÚCEì,đ,©, , ,é,½,β,ìŠO•“fvf□fOf%of€,í,à,±•K—v, ,è,Ü,¹,ñ□B
- WinZip 6.2,ÉWinZip Self-Extractor Personal Edition,²“à' ,³,è,Ü,µ,½□BWinZip Self-Extractor Personal Edition,ì16bit,ìŽ©CEÉ%ođ“€ftf@fCf<, ,é,ç,ì32bit,ìŽ©CEÉ%ođ“€ftf@fCf<□[ ,çftf@fCf<-¼fTf□[fg□j,đ□i□–,Å,«,Ü,·□B

### ,»,ì¼□–,³,È•iX“ \_

- Optionsf□fjf...□[ ,ìPasswordf\_fCfAf□fOf{fbfNfX,É,í“mask”fìfvfVf#f“□B
- WinZip,ì“FŽ` ,Å,«,éŽÀ□sftf@fCf<,đŠ],ç,½,Æ,«□AWinZip,í,»,ìftf@fCf<,đŽÀ□s,µ□A,»,ì□'CEÉ“à,ìSETUPfvf□fOf%of€,đf\_fuf<fNfšfbfN, ,é,Æ□AWinZip,ìfc□[f<fo□[ ,ì“Install”f{f^f“ ,đfNfšfbfN,µ,½,Æ,«,Æ“— ,ì“@□ì,đ,µ,Ü,·□B
- , ,Žg,ç,ìfrfffìf,□[fh,²256□F^È□ă,É'í%ož,µ,Å,ç,é,Æ,«,í'â,«,Èfc□[f<fo□[ ,²•\Žì,³,è,Ü,·□B

### WinZip v6.1,Å,ì•iX“ \_

- WinZip Wizard,ì“□Ü,É,æ,è□Aftf@fCf<,ì%ođ“€ ,âZIPftfH□[f}fbfg,ìfvf□fOf %of€fCf“fXfg□[f<,²,Æ,Å,àŠÉ'P,É□[
- ZIPftf@fCf<,Ö,ì¼□ÚfAfNfZfX□FExplorer,âftf@fCf<f}f□[fWff,í,à,±•s— v□Bft□[fU□[Žw'è,ìFavorite Folders,É¼□Ú%ođ“€fRfs□[ ,µ,Ü,·□B
- Ž©“@fCf“fXfg□[f<□FZIPftf@fCf<,²Setup,âInstall,đšÜ,ñ,Å,ç,é□è□±□Aftf@fCf<,đ %ođ“€fRfs□[□A,»,ì,Ü,ÜfCf“fXfg□[f<,đ□s,ç,Ü,·□B
- ŠÉ'P%ođ“€□F[Unzip Now],đ'ìđ, ,é,¾, , ,Åftf@fCf<,đ%ođ“€□A,»,ìššXfg,đExplorer,æ,è•\ Žì,µ,Ü,·□B
- Wizard,ÆClassic□i□; ,Ü,Å,ìfCf“f^□[ftfF□[fX□j,í□AfNfšfbfN^è,Å,Å□Ø,è'Ö,ì%oÅ“\ ,É□B

### Windows95□ă,Å,ì□V<@“\

- WinZip,Åftf@fCf<,đŠ],ç,½□ó'Ô, ©,ç,Filef□fjf...□[ ,ìCreate Shortcut,đ'ìđ, ,é,±,Æ,Å□AZIPftf@fCf<,ìfvf#□[fgfjfbfg,đŠÉ'P,É□i□–□B
- Windows95,ìQuikView,²□Afvf□fOf%of€,ìŠÖ~A•t, ,ftf@fCf<,ìšù'è'ì,É□B
- Explorer,æ,èŽ©CEÉ%ođ“€CE`Ž®,ìftf@fCf<-¼,đ'ìđ,µ□AfRf“fefLfXfgf□fjf...□[□if}fEfX,ì

%E{f^f",dfNfŠfbfNj,æ,è"Open with WinZip",đ'l,Ô,±,Æ,ÅAŽ©ÈÈ  
%đ"€È`Ž@ftf@fCf<,đWinZip,ÅŠj, -,ç,ê,Û,·B

- Explorer,æ,èftfHf<f\_[]đ'l'đ,μAfRf"fefLfxfgf[]fj...[],æ,è"Add to Zip",đ'l,ÔŽ-  
,ÅftfHf<f\_[]'S'l,đ,»,l,Û,Û^³k[]B

**FAQ (,æ,, ,éŽĵ-â,Æ%õñ“š)**

**(Q) <ó”’ ,èfpfX,É, ,éftf@fCf<,ðLHA,ÂŽg—p,·,·,éêë†,É-â’è,ª<N,« ,Ü,·□B**

(A) TakeŽ□,É,æ,éftfš□[fEfFfALha32,ð,²Žg—p%õ³,ç□B

**(Q) ftf@fCf<-¼,É“Á’è,ì‘SŠp•ŕŽš,ª“ü,Á,Ä,ç,é,ÆfGf%õ□[ ,É,È,è,Ü,·□B**

(A) f□A%õ\□AŠ\□A<\□A□\□A”\□A•\□A□\□A“\□A—\□A~\,É,Ç,ìShift-JISfR□[fh,ì,QfofCfG-  
Ú,ª0x5c,ì•ŕŽš,ðftf@fCf<-¼,ÉŽg—p,·,·,é,ÆfGf%õ□[ ,É,È,è,Ü,·□B,±,ê,ç,ÌŠĵŽš,ðftf@fCf<-  
¼,ÉŽg,í,È,ç,æ,ª,É,µ,Á%õ³,ç□B,±,ì-â’è,É’Í,·,é’Í%õŽ,Í,Ü,¾-ç’è,Å,·□B

**(Q) LHA,Âf□f“foftf@fCf<fI□[f€ ,ð,Â, ¯ ,ç,è,Ü,¹,ñ□B**

(A) WinZip,Á’í%õž,µ,Ä,ç,éLHA,ª16bit”Á,ì,½,ßf□f“foftf@fCf<fI□[f€ ,ÍŽg—p,Á,« ,Ü,¹,ñ□B

**(Q) fCf“fXfg□[f<Žž,Éftfš□[fY,µ,Ä,µ,Ü,çfCf“fXfg□[f<,Á,« ,Ü,¹,ñ□B**

**(Q) fpfXf□□[fh,ì,©, ¯ •û,ª•ª,©,è,Ü,¹,ñ□B**

**(Q) WinZip Self-Extractor,ÌŽg,ç•û,ª,í,©,è,Ü,¹,ñ□B**

**(Q) fffBfXfN,ÉfA□[fjfCfu,ð•ªš,,,·,·,é,É,Í,Ç,ª,µ,½,ç,æ,ç,Á,µ,â,ª,©□H**

## FAQ fffBfXfN,ì•aŠ,,

Zipftf@fCf<,đffBfXfN•aŠ,,„,é,É,íA-³—

¿,Äf\_fEf“f□□fh,Ä,«,éfx□[f^fefXfg”ÄffBfXfN•aŠ,,fAfhfjf“,đfCf“fXfg□[f<,μ,Ü,·□BDisk SpanningfAfhfjf“,íWinZip,lEfFfufy□[fW(www.winzip.com)

,©,çf\_fEf“f□□fh,Ä,«,Ü,·□BfAfhfjf“,đfCf“fXfg□[f<,μ,½,ì,¿□A^È%º,ìŽè□‡,Á□s,Á,Ä%º,³,ç□B

- 1) WinZip,đ•N“@,μ,Ä□Afc□[f<fo□[,ì **[New]** f{f^f“,đfNfŠfbfN,μ,Ä,,¾,¾,³,ç□B
- 2) □□□,μ,½,çfA□[fjfCfu-¼,đ□A—á,¡,ÍA:MYFILES.ZIP,ì,æ,æ,É□A“ü—í,μ,Ä,,¾,¾,³,ç□B **[Add Dialog]** f{fbfNfX,²f`fFbfN,³,é,Ä,ç,é,±,Æ,đŠm”F,μ,Ä,,¾,¾,³,ç□B,» ,é,©,çfL□[f{□fh,ì **[Enter]** fL□[,đ %ºÿ,μ,Ä,,¾,¾,³,ç□B
- 3) **[Add]** f\_fCfA□fOf{fbfNfX,Á□A’Ç%ºÁ,μ,½,çftf@fCf<-¼,đ“ü—í,μ,Ä,,¾,¾,³,ç□B(—á□FC:\data\\*.\*) ,» ,é,©,ç□A—á,¡,ì **[Recurse Folders]** ,É,Ç,ì,» ,ì¼,ìfjfvfVf†f“,đŽw’è,μ,Ä,,¾,¾,³,ç□B
- 4) **[Multiple Disk Spanning]** fRf“f{f{fbfNfX,ì%º-î^ó,đfNfŠfbfN,μ,Ä□A•aŠ,,fjfvfVf†f“,đ’í,đ,μ,Ä,- ,¾,¾,³,ç□B
- 5) **[Add]** f{f^f“,đfNfŠfbfN,μ,Ä,,¾,¾,³,ç□BWindows 95,đŽg—p,μ,Ä,ç ,Äf□fCf-fhfj□[fh,đŽg,æ□è□‡□A**[Add with Wildcard]** ,đfNfŠfbfN,μ,Ä,,¾,¾,³,ç□B

Žÿ,ì,æ,æ,È□\$CEÀ,ª ,è,Ü,·□B

- ,±,ì<@“\,đŽg—p,·,·,é’O,Éftf□fbfs□[fhf%ºfCfu□ă,ÉfA□[fjfCfu,²□□□,Ü,½,ÍŠJ,©,é,Ä,ç ,É,·,é,ì,É,è,Ü,¹,ñ□B,» ,æ,Á,É,ç□è□‡□AfffBfXfN•aŠ,,fjfvfVf†f“,ì-³CEø,É,É,è,Ü,·□B
- **ZIPftf@fCf<** ŠJ,ç,Ä,ç,éA□[fjfCfu“à,ìftf@fCf<,í’S,Ä’u,«Š·,¡,ç,é,Ä,μ,Ü,ç ,Ü,·□iŠm”F,ìf\_fCfA□fOf{fbfNfX,²ff□[f^’uŠ·,ì’O,É•Ž¡,³,é,Ü,·□□B,Ü,½□gFormat□h,â□gWipe disk□h,Æ,ç,Ä,½fjfvfVf†f“,²Žw’è,³,é,Ä,ç,é□è□‡,É,í□ACE»Žž“\_ÄffBfXfN,É ,é’S,Ä,ìff□[f^,²Ž ,É, í,é,Ü,·□B
- **ZIPftf@fCf<** Windows 95,Ü,½,íWindows NT□ă,Á ,é,í□APKZIP 2.04g,Á,È,□A-³— ¿,Äf\_fEf“f□□fh,Ä,«,éfx□[f^fefXfg”ÄWinZip Disk SpanningfAfhfjf“,đŽg— p,Ä,«,Ü,·□B’□^□□f□f“fOf□f@fCf<f□[f€,í’Z,çCE`Ž@,ÄfZ□[fu,³,é,Ü,·□B,±,é,íPKZIP 2.04g,²16fjfvfVf†f,ìfvf□fOf%ºf€,Äf□f“fOf□f@fCf<f□[f€,đfTf□[fg,μ,Ä,ç,È,ç,½,ß,Á,·□B
- **ARJftf@fCf<** ARJ,ì□è□‡□Aftf@fCf<,ì’Ç%ºÁ□A^Ú“@□A□V<K□i□—□A□C□³,đ□s,æ,ì,É- vvafjfvfVf†f“,đŽg,Á,Ä□AZ©“@“l,É’¼,ìftf@fCf<,đ%ºó,·,±,Æ,É,·;□“fffBfXfN,Ö,ì□’,«□ž,Ý,đ□s,ç ,Ü,·□B
- **LZHftf@fCf<** LZH,í•;□“,ìffBfXfN,É•ª,·,ÄfA□[fjfCfu,đ□□□,·,é,±,Æ,í,Á,«,Ü,¹,ñ□B

## FAQ fCf“fXfg[]f<Žž,ì-â‘è

Internet Exproler,đfCf“fXfg[]f<,μ,Ä,ç,Û,<sup>1</sup>,ñ,©[]HCOMCTL32.DLL,đInternet  
Exproler,<sup>2</sup>ÿŽè,É[]‘,«Š,!,Ä,μ,Û,α,<sup>1/2</sup>,β,ÉftfŠ[]fY,·,é,“,»,,è,<sup>3</sup>,,è,Û,·[]  
BCOMCTL32.DLL,ìCEÄ,çfo[]fWf#f“ ,đfRfs[][,μ,<sup>1/2</sup>[]ă,ÄfCf“fXfg[]f<,μ,Ä  
%o<sup>2</sup>,<sup>3</sup>,ç[]BfCf“fXfg[]f<CEă,ì,à,α^ê“xCOMCTL32.DLL,đfRfs[][,μ<sup>1/4</sup>,μ,Ä%o<sup>2</sup>,<sup>3</sup>,ç[]B

## FAQ Self-Extractor

^È%º,Ä,íZIPftf@fCf<,ðŽ©CEÈ%ºð“€CE^ftf@fCf<,É,·,éêèþ,ìŽèþ,ðà-  
¾,µ,Ü,·BLZHftf@fCf<,ðŽ©CEÈ%ºð“€CE^ftf@fCf<,É,µ,½,çêþ,íALZHftf@fCf<,ðŠJ,«A%º,ì(2)  
,ìfþfj...[,ð'ìð,·,é,¾,·,Äþî-,Ä,«,Ü,·B

- (1) ,Ü, Ž©CEÈ%ºð“€CE^,É,µ,½,çZIPftf@fCf<,ðî-,µAWinZip,Ä,»,ìZIPftf@fCf<,ðŠJ,ç  
,½ó'Ô,É,µ,Ä%º,³,çBŽ©CEÈ%ºð“€CE^,É,µ,½,çZIPftf@fCf<,·,Ä,É,·,éêèþ,í  
AWinZip,Ä,»,ìZIPftf@fCf<,ðŠJ,ç,Ä%º,³,çB
- (2) WinZip,ì [Actions] fþfj...[, ©,ç [Make .EXE File] ,ð'ìð,µ,Ä%º,³,çB
- (3) [Create Self Extracting ZIP From:] ,ì—“ ,É,íæ,Ü,ÇŠJ,ç,½ZIPftf@fCf<,·\Žì,³,é,Ä,ç  
,é,í,·,Ä,·B,à,µŽ©CEÈ%ºð“€CE^,É,µ,½,çZIPftf@fCf<,ð·ìX,·,éêèþ,íA—×,É,·,é [Browse]  
f{f^f“,ð%ÿ,µ,ÄZIPftf@fCf<,ðŽw'è,µ,Ä%º,³,çB
- (4) [Default "Unzip" to Directory:] ,É,ìŽ©CEÈ%ºð“€CE^ftf@fCf<,·ŽÀs,³,é,½êþffftfHf<fg,Ä  
%ºð“€,³,é,éfffBfCfNfgfS(ftfHf<f\_) ,ì^É'u,ðŽw'è,µ,Ü,·B,±,±,Ä  
%º½,àŽw'è,µ,É,©,Ä,½êþAfffHf<fg,ì  
%ºð“€fffBfCfNfgfS,ìŽÀs,³,é,é}fvf“,ìSÄ«·ì“TEMP,ÄŽw'è,³,é,Ä,ç  
,éftfHf<f\_,É,É,è,Ü,·B,É,·A,±,ì—“ ,Ä,ìfffBfCfNfgfS(ftfHf<f\_)  
,ðŽw'è,·,éêèþ,ìþf}þfN,·(fofbfNxf%ºfbfVf...),Ä·\Žì,³,é,Ü,·,ì,Ä,²^Ó%º,³,çB
- (5) [Self Extracting Type] ,Ä,íA16bit“Ä,Ü,½,ì32bit“Ä,ì,Ç,·,ç,©,ìŽ©CEÈ  
%ºð“€CE^ftf@fCf<,ðî,é,©,ðŽw'è,µ,Ü,·B16bit“Ä,Ä,ìf“fOftf@fCf<fì[f€,·Žg—  
p,Ä,«,Ü,¹,ñ,·AWindows 3.1A95ANTã,ì,ç,·,é,ìSÄ«Ä,àŽg—  
p,Ä,«,Ü,·B32bit“Ä,ð'ìð,·,é,Æf“fOftf@fCf<fì[f€,·Žg—  
p,Ä,«,Ü,·,·AWindows3.1,É,Ç16bitWindowsSÄ«Ä,Žg—p,·,é,±,Æ,í,Ä,«,Ü,¹,ñB
- (6) [Use CTL3D.DLL For 3D Effects If Available] ,Ä,ì(5)  
,Ä16bit“Ä,ð'ìð,µ,½,Æ,«,·,É,·fFbfN,Ä,«,·,é,æ,·,É,È,è,Ü,·B%ºð“€Žž,ìfCfAfþfO,É—S'ì"l,ÈEø  
%ºÈ,ðŽ,½,¹,é,±,Æ,·,Ä,«,Ü,·B
- (7) [Overwrite by default] ,ðf`fFbfN,·,é,ÆA%ºð“€,³,é,½,Æ,«,ÉŽ©“®“l,Éãþ',«,ð,µ,Ü,·B,±,±  
,ðf`fFbfN,µ,É,ç,Æ%ºð“€,µ,½,Æ,«,É“—¼,ìftf@fCf<,·,Ä,½êþAãþ',«,·,é,©,Ç,·  
,©,ìfCfAfþfO,·\Žì,³,é,Ü,·B
- (8) ã,ìŽèþ,·,é,ì,è,Ü,µ,½,çA [Make .EXE] f{f^f“,ð%ÿ,µ,Ä%º,³,çB
- (9) [Make .EXE] f{f^f“,ð%ÿ,µ,½CEã,ÉCE»,·,é,éfCfAfþfO,íAŽ©CEÈ  
%ºð“€CE^ftf@fCf<,ðfefXfg,·,é,©,Ç,·,©,ð,«,ç,Ä,ç,Ü,·BfefXfg,µ,½,,È,·,é,î [·,ç,·,!(N)] ,ð  
%ºÿ,µ,Ä%º,³,çB
- (10) ,±,é,ÄŽ©CEÈ%ºð“€CE^ZIPftf@fCf<î-,ìŽèþ,ì,ì,è,Ä,·B(3),ìfCfAfþfO,·ŽJ,ç,Ä,ç,Ü,·,·A  
[Close] f{f^f“,ð%ÿ,µ,Ä·Ä,·,Ä%º,³,çB



## FAQ fpfXf [fh, ì, ©, - • û

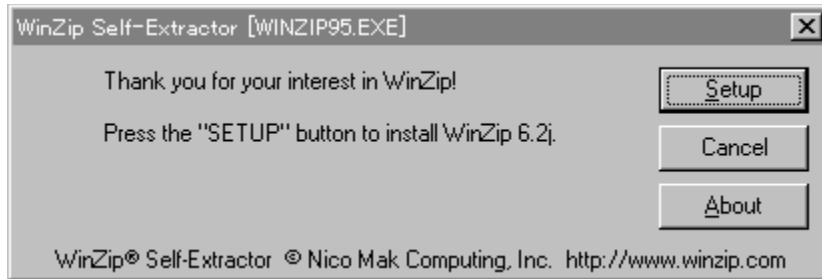
ZIPftf@fCf<, ÉfpfXf [fh, ð, ©, -, é, É, í A[Options]-[Password] , ºÝ'è, º, è, Ä, ç, éŠÔ, É Aftf@fCf<, ì'Ç  
%oÁE%o{ —, ðs, ç, Ü, ·B

WinZip, ð<N“ ®, µ, Ä[File]-[New Archive] , ð'í ð, µ, Ü, ·B, ±, ±, ÅA ì ñ, ·, éfA [fffCfu-¼, ð“ü—  
í, µ, Ü, ·B (—á, í, ì Atest.zip), » , µ, ÄOK, ðfNfŠfbfN, µ, Ü, ·B ŽŸ, É[Add]  
f\_fCfAfO, ºŠ], «, Ü, ·, º AfLfff“fZf<, µ, Ü, ·B[Options]-[Password] , Å AfpfXf [fh, ð“ü—  
í, µ, Ü, ·B, Ä, -, É[Actions]-[Add] , ÅfA [fffCfu, É'Ç%oÁ, µ, ½, çftf@fCf<, ðŽw'è, µ, ÅA[Add]  
, ðfNfŠfbfN, µ, Ü, ·B

, » , ìftf@fCf<, ºfpfXf [fh • ÛEì, º, è, Ä, ç, é, ©, Ç, º, ©, í Aftf@fCf<-¼, ìEã, è, É+, º, Ä, ç, Ä, ç, é, ©, Ç, º  
, ©, Ä, í, ©, è, Ü, ·B+, ì, Ä, ç, ½ftf@fCf<, ð“Ç, p, É, ì[Options]-[Password], ÅfpfXf [fh, º³, µ, “ü—í, º, è, Ä, ç  
, É, -, è, ì, È, è, Ü, ¹, ñB

## WinZip Self-Extractor

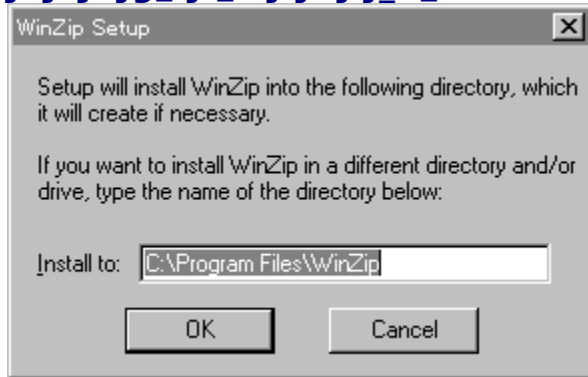
WinZip Self-Extractor [WINZIP95.EXE]  
Thank you for your interest in WinZip!  
Press the "SETUP" button to install WinZip 6.2.



WinZip® Self-Extractor © Nico Mak Computing, Inc. <http://www.winzip.com>

{button < i½½β, i½½, Back()} {button i½½ i½½ i½½ i½½ >, Next() }

## WinZip Setup



, ±, ì%œ-Ê, Å, íCf" fXfg [f< æftfHf<f\_, ðY'è, µ, Ü, ·B, » , ì, Ü, Å, æ, ¯, ê, íA[OK]f{f^f", ð%ÿ, µ, Ä, -  
, ¾, ¾, çBfCf" fXfg [f< æftfHf<f\_, ð• ÌX, ·, éêê, íA[Install to]•" •ª, ð', «Š, ì, Å[OK]f{f^f", ð  
%ÿ, µ, Ä, , ¾, ¾, çBfZfbfgfAfbfv, ð'†Ž~, ·, éêê, í[Cancel], ð%ÿ, µ, Ä, , ¾, ¾, çB

{ button < ì½ß, ì½, Back() } { button ì½ ì½ ì½ ì½ ì½ >, Next() }

## WinZip,ifZfbfgfAfbfv

Thank you for installing WinZip!

WinZip features

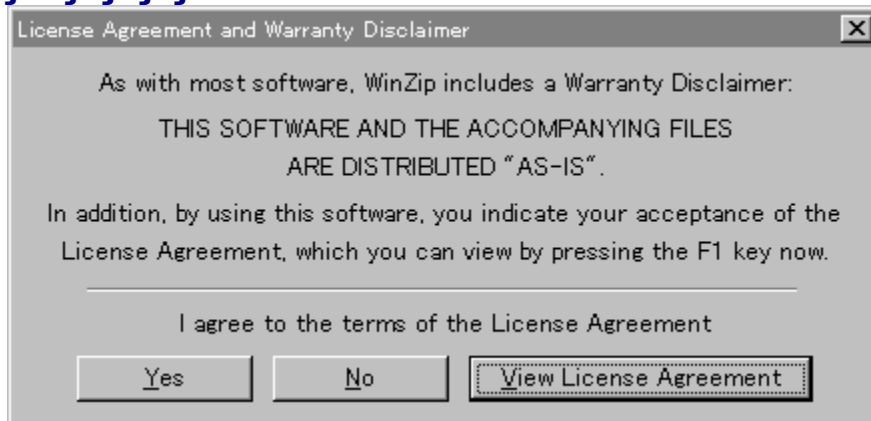
- \* Built-in ZIP and UNZIP
- \* Full drag and drop support
- \* Tight integration with the Windows 95 shell
- \* Support for TAR, gzip, and compressed files
- \* Optional support for ARJ, ARC, and LZH files
- \* Optional support for many Virus Scanners

Press the F1 key on your keyboard at any time while running WinZip for context sensitive help and complete documentation.

Click "Next" to continue.

,±,ì%œ-Ê,Å,íWinZip,ì<@“\,ð□à-¾,μ,Ä,ç,Ü,·□B,»,ì,Ü,Ü[Next >]f{f^f“,ð%œÿ,μ,Ä,,¾,¾,ç□B  
{button < ÿ½ß,ï½,Back()}{button ÿ½ï½ï½ï½ï½ >,Next()}

## f%ofCfZf“fX



, ±, ì%æ-Ê, Å, íf%ofCfZf“fX, ì“^Ó, ð<□, ß, Ä, ç, Ü, ·□Bf%ofCfZf“fX, É, Â, ç, Ä, Í, ±, ±, ðfNfŠfbfN, µ, Ä  
%oº, ³, ç□B

WinZip, Æ, »), ÌÖ~Aftf@fCf<, íŒ»□ó, ì, Ü, Ü, Å”z•z, ³, ê, Ä, ç, Ü, ·□B, ±, ìf\ftfgfEfFfA, ðŽg—p, ·, é, É, íf  
%ofCfZf“fX, ì“^Ó, º•K—v, Å, ·□Bf%ofCfZf“fX, ðŒ©, é, É, í[View License Agreement]f{f^f“, ð  
%oÿ, µ, Ä, , ¾, ¾, ç□B, ±, ìf%ofCfZf“fX, É“^Ó, ·, é□ê□±, í[Yes], ð□A“^Ó, µ, È, ç□ê□±, í[No], ð%oÿ, µ, Ä, -  
, ¾, ¾, ç□B[No], ð%oÿ, ·, ÆfZfbfgfAfbfv, º†Ž~ , ³, ê, Ü, ·□B

{ button < ì½ß, ì½, Back() } { button ì½ì½ì½ì½ì½ì½ >, Next() }



## fZfbfgfAfbfv,ì•û-@

Click "Next" to proceed.

- Express setup (recommended)
- Custom setup (for advanced users)

Express Setup associates WinZip with archives, creates a program group, and puts WinZip icons on the desktop and Start menu.

,±,ì%œ-Ê,Å,íZfbfgfAfbfv,ì•û-@,ð'ð,μ,Û,·B

[Custom setup],ÍŠO•"fvf□fOf%œf€,ÉŠÖ,·,é□Ý'è,ð□s,±,±,Æ,ª,Å,«,Û,·,ª□AfCf"fXfg□[f<CEã,à□Ý'è,·,é,±,Æ,ª,Å,«,Û,·,ì,Å□A'Ê□í,í[Express setup],ð'ð,μ□A[Next >]f{f^f",ð%œÿ,μ,Å,,¾,¾,ç□B

{button < ÿ½ß,ÿ½,Back()}{button ÿ½ÿ½ÿ½ÿ½ÿ½ >,Next()}

## fZfbfgfAfbfv, ì□I—<sup>1</sup>

Thank you for installing this free upgrade.

For a list of new features in this release, please see the "Version History" section of the online help file.

Click "Finish" to start WinZip.

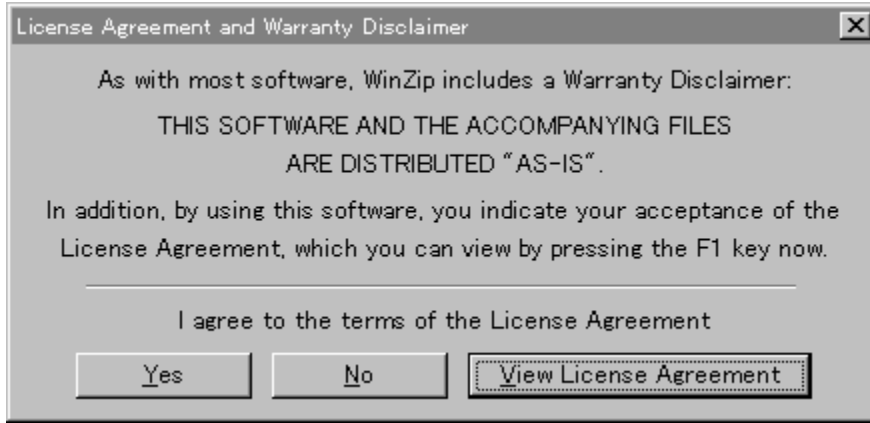
, ±, ê, ÅWinZip, ìfZfbfgfAfbfv, ì□I, í, è, Å, ·□B[Finish]f{f^f", ð%oÿ, µ, ÅfZfbfgfAfbfv, ð□I—<sup>1,3,1,Ä,-</sup>,<sup>3/4,3,3</sup>, ç□BWinZip, ð□%o, ß, Å, "Zg, ç, ì•ú, ì□A^ø, «'±, «WinZip, ì<N"® , ð, µ, Û, ·, ì, Å□A%o<sup>o</sup>, ì[Zÿ, Ö

>]f{f^f", ðfNfSfbfN, µ, Å%o<sup>o,3</sup>, ç□B  
{button < ì½½ß, ì½½, Back()} {button ì½½ì½½ì½½ì½½ >, Next() }



## WinZip, Inc.®

WinZip, Inc.®  
WinZip, Inc.®  
WinZip, Inc.®  
WinZip, Inc.®



WinZip, Inc.®  
WinZip, Inc.®  
WinZip, Inc.®  
WinZip, Inc.®

WinZip, Inc.®  
WinZip, Inc.®

- [f f... f f](#)
- [, ' . 1 . û - @](#)
- [fwf < fv, i i - 1](#)



## P&AfVfFfAfEfFfA

□@P&AfVfFfAfEfFfA,í□AŠCŠO,ì—D,ê,½fVfFfAfEfFfAfVf□fOf%of€,đ“ú-{-,ìŠF,³,ň,É□D  
%oî,μ□A“~Žž,É“o~^—¿<à,ì’—<à’ã□sfT□[frfX,à□s,Á,Ä,“è,Ú,·□B“o~^,í“ú-  
{%o~,Á,Á,«,Ü,·,μ□A,²“ü<à•û-@,à-L•x,É—p^Ó,μ,Ä,²,´,ç,Ü,·,ì,Á□A<C,É“ü,Á,½fVf□fOf%of€  
,í□¥”ñ“o~^,³,ê,é,±,Æ,ðœä’E,ß’v,μ,Ü,·□B

- ²□•¶
- ²“ü<à
- □x•i,ì”—
- P&AfVfFfAfEfFfA,Ö,ì,“-â,ç□±,í,¹

**P&A fVfFfAfeFfA,É,Â,ç,Ä**

P & A fVfFfAfeFfA

TEL: 0425-35-9901('ă) FAX: 0425-35-9902

NIFTY-Serve: PAF02461, CXH00400

E-mail: paf02461@niftyserve.or.jp

WWW: <http://www.pandasw.com>

□§190 “Ĉ<ž“s—§□ižs□ă□»'→1-3-6-2

(For information in English, call 0425-35-9901)

,2'□•¶

,2'□•¶•û-@,É,Í□A^È%º,ì5,Â,a, ,è,Û,·□B

1. "džqf□□[f<

□u"o~^—pž†□v,É•K—vž-□€,đ<L"ü,μ□A^È%º,ì^¶□æ,Éf□□[f<,μ,Ä,,¾,¾,ç□B

NIFTY-Serve : PAF02461  
E-mail : paf02461@niftyserve.or.jp

2. FAX

□u"o~^—pž†□v,É•K—vž-□€,đ<L"ü,μ□A^È%º,ì^¶□æ,ÉFAX,μ,Ä,,¾,¾,ç□B

FAX : 0425-35-9902

3. "d~b

, "d~b,É,æ,é,2'□•¶,àžó, ¯•t, ¯,Ä, ¯,è,Û,·,ª□A,È,é,x,"džqf□□[f<,©FAX,Ä,"šè,ç'v,μ,Û,·□B

TEL : 0425-35-9901

4. NIFTY-Serve flf"f%ofCf"fvf#bfsf"fo

GO SPANDA, Å□u,o□•, `fXfe□[fvf#f"□v,É"ü,è□A □u2. ,o□•, `fvf#bfsf"fo□v,đ'I'đ,μ,Ä,-  
,¾,¾,ç□Bfgfbfvf□fj...□[,ì,²—~—p•û-@,đžQ□Æ,μ□Aflf"f%ofCf" ,Ä,ìžwž!,É□],Ä,Äžè±,«,đ□s,Ä,Ä,-  
,¾,¾,ç□B

'□^Ó!!

flf"f%ofCf"fvf#bfsf"fo,Ä,ì, "žx•¥,ç—ž<à'ìCen□A□x•i,ì"—,É,Ä,«,Û,μ,Ä,í□A □u,2"ü<à□v,Ä□à-  
,¾,¾,è,Ä,ç,é,à,ì,Æ^U,È,è,Û,·,ì,Ä□A•K,,²—~—p•û-@,đ,"Ç,Ý,,¾,¾,ç□B

flf"f%ofCf"fvf#bfsf"fo,Ä,í-^CEž,ì,"f"¾□x•i,â□Afz□[f<,đ□žž□s,Ä,Ä, ¯,è,Û,·,ì,Ä□A□¥"ň^ê"x, ¯  
—š,žšň,è,,¾,¾,ç□B

5. fCf"f^□[flfbfg

fCf"f^□[flfbfg,ì□uP&AfvfFfAfeFfA fz□[f€fy□[fW□v,©,ç,à,2'□•¶,Ä,«,Û,·□Bšefv□fOf%of€,ì□Đ  
%oifvy□[fW,É, ,é□u'□•¶{f^f"□v,đ%oÝ,·,Æ□A, ¯-¼'O□A,²□Z□Š"™,đ"ü—í,μ,Ä,ç,½,¾,¾,æ,x  
,É'□•¶□',ªCE»,è,Û,·□B□U,μ,,ífy□[fW,ì□à-¾,đ, ¯"Ç,Ý,,¾,¾,ç□B

,2“ü<à

□u,2'□•□□v,ì,ç,,.ê,©,Å□A“o~^—pŽ†,đ'—•t,μ,½CEã□A^È%oo,ì,ç,,.ê,©,ì•û-@,Å,2“ü<à,-  
,¾,¾,ç□B,½,¾,μ□A□u4.NIFTY-Serve f|f“f%ofCf“fVf#fbfsf“fO□v,ì□é□‡,í□A|f“f%ofCf“□ã,Å,ì□à-¾,É□  
,A,Å,,¾,¾,ç□B

- —X•Ö□U'Ö
- <â□s□U□ž
- CE»<à□'—
- fNfCEfWfbfçfj□[fh
- 'î< }•Ö'...•¥,ç
- NIFTY-Serve fVfFfAfEfFfA'—<à'ã□sfT□[frfX

## -X•Ö□U'Ö

"o~^—pŽ†,đ'—•tĀã□A—X•Ö<Ç,É"ö,†•t,¬,ì□U'Ö—pŽ†,đŽg,Á,Ä□A"o~^—ž<à,É□Á"i□Ā,đ  
%oĀZZ,μ,½<àŠz,đ□A^É%oo°,ìĀĀ□Ā,É,²"ü<à,,¾,¾,ç□B—á,†,í"o~^—  
ž<à,¾4,500%o~,ìĀĀ□†□A4,500%o~ + (4,500□~0.03) = 4,635%o~,Æ,È,è,Û,·□B□½,É□\,μ-ó,²,´,ç  
,Û,¹,ñ,¾□A□U'ÖŽè□"—ž,†,¬<q—l•%oo'S,ĀĀãŠè,ç'v,μ,Û,·□B,É,¬'—ž,íP&AfvffAfeffA,¾•  
%oo'S,¾,¹,Ā,ç,½,¾,«□A□x•i,í"ü<àŠm"FCĀã,ì—X'—,Æ,È,è,Û,·□B

'□^Ó!!

-X•Ö□U'Ö,í□A□U'ÖŽè±,«Āã□A"ü<àŠm"F,Û,Ā,É4□`5"ú,©,©,è,Û,·,ì,Ā□A,»„ì•a'—  
•t,¾x,è,Û,·□B,¬<},¬,ìĀĀ□†,í□A□U'Ö—pŽ†,ì□T,†,đP&AfvffAfeffA,Û,ĀFAX,μ,Ā,ç  
,½,¾,,Æ□A'□,,·,Ý,Û,·□B

-¾<` : (—L) fs□[fAf"fhfG□[

ĀĀ□Ā"Ö□†: 00160-0-611599

## <âsUž

“o~^—pž†,đ’—•tĀã□A“o~^—ž<à,É□Á”i□Ā,đ%oÁžž,μ,½<àšž,đ□A^È%oº,ìĀĀ□À,É,²“ü<à,-  
,¾,³,č□B“o~^—ž<à,¼4,500%o~ ,ì□é□#□A4,500%o~ + (4,500□~0.03) =4,635%o~ ,Æ,È,è,Û,·□B□½,É□\  
,μ-ó,²,´,č,Û,¹,ñ,³□A□U□žžè□”—ž,í,“<q—l•%o’S,ĀĀĀšè,č’v,μ,Û,·□B,È,“’—ž,íP&AfvfFfAfeFfA,³•  
%o’S,³,¹,Ā,č,½,¾,«□A□x•i,í“ü<àšm”FĀã,ì—X’—,Æ,È,è,Û,·□B

- ¼<` : (—L) fs□[fAf“fhfG□[
- U□ž□æ : □’-ˆâ□s □º“žžx“X (•□) 9432641



## CE > à ' -

“o~^—pž†,đ“••,μ□A“o~^—ζ<à,É□Á”i□Ā,đ%oÁžž,μ,½<àšz,đ□A^È%oo,ì^¶□æ,É,“’—,è,-  
,¾,¾,ç□B“o~^—ζ<à,¾4,500%oo~ ,ì□é□#□A4,500%oo~ + (4,500□~0.03) = 4,635%oo~  
,Æ,È,è,Û,·□B,È,“□π•i,ì’——ζ,íP&AfvfFfAfEfFfA,¾•%oS,¾,¾,Ä,ç,½,¾,«□A□π•i,í—X’—,Æ,È,è,Û,·□B

^¶□æ : P&AfvfFfAfEfFfA

□Z□Š : □§190 “CE<ž“s—§□ìžs□ă□»’→1-3-6-2

## fNfCEfWfbfgfj[]fh

fNfCEfWfbfgfj[]fh, í AMASTER AVISA ADC AAMEX, Ì, Ý, ² ~ — p, É, È, ê, Ü, · B “o~^—pŽt, Éfj[]fh, ÌŽí  
—p, Æ” Ö[]t[]A—LCEøŠúCEÀ, ð-¾<L, μ[]AFAX[]A—  
X•Ö[]A, Ü, ½, Í “džqf[][]f<, ĀP&AfVfFfAfEfFfA, Ü, Ā, “’ —, è,, ¾, ¾, ç[]B, “Žx•¥, ç, Í—, CEŽ1%oň•¥, ç  
, Æ, È, è[]A“o~^—ž<à, É[]Á”i[]Ā, ð%oÁŽZ, μ, ½<àŠz, ð[]ž<[], ¾, ¾, Ā, ç, ½, ¾, «, Ü, ·[]B—á, Ì, Í “o~^—  
ž<à, ¾4,500%o~ , Ì[]ê[]#[]A4,500%o~ + (4,500[]~0.03) = 4,635%o~ , Æ, È, è, Ü, ·[]Bfj[]fh[]^—  
[], ÍP&AfVfFfAfEfFfA, ¾[]s, ç[]A[]x•i, Æ^ê[][], É” „, ã[][, Ì[]T, Ì, ð’ —•t, ¾, ¾, Ā, ç, ½, ¾, «, Ü, ·, Ì, Ā[]A, ²Šm”F, -  
, ¾, ¾, ç[]B’ ——ž, ÍP&AfVfFfAfEfFfA, ¾•%o’S, ¾, ¾, Ā, ç, ½, ¾, «[]A[]x•i, Í—X’ —, Æ, È, è, Ü, ·[]B

# '{ } • Ö' ... • ¥, ¢

f,,f}fg%oo^—A,ª,“í,¯,µ,Ü,·,ì,Å□A□x•iŽó,~Žæ,èŽž,É‘ă<à□i“o~^—z<à + ‘ă^øŽè□”—  
z□j□~1.03,đ,“Žx•¥,¢,,¾,¾,¢□B—á,ì,í“o~^—z<à,ª4,500%oo~,ì□ê□#□A(4,500%oo~ + 700) □~1.03 =  
5,356%oo~ ,Æ,È,è,Ü,·□B

- ½“ú,ì□³CEß,Ü,Å,É,¢,½,¾,¢,½,²'□•¶,í□A—kŠC“¹□A<ă□B□A%oo«“ê□A—f“#,đ,ì,¼,«□A—“ú”“—,ì  
—,“ú”z'B,Æ,È,è,Ü,·□B—kŠC“¹□A<ă□B□A%oo«“ê□A—f“#,É,“□Z,Ü,¢,ì□ê□#,í□A—  
□X“ú,Æ,È,è,Ü,·□i^ê•”n^æ,Å,í,».,ê^È□ă,ì□ê□#,à,²,´,¢,Ü,·□j□BCEđ'ÉŽ-  
□i“™ ,Å,â,b,đ,ì,É,¢□ê□#,í□A□x•i,ì,“í,¯,ªx,ê,é,±,Æ,ª, ,è,Ü,·,ì,Å□A, ,ç,©,¶,ß,²—¹□³,,¾,¾,¢□B
- “y“ú,É,²'□•¶,¢,½,¾,¢,½•ª,É,Å,«.,Ü,µ,Ä,í□ACEŽ—j,ìŽæ,è^µ,¢,Æ,È,è,Ü,·□B
- “ú't•s□Ý,ì,±,Æ,ª¹½,¢□ê□#,í□A—éŠÔŽw'è□i-  
é6Žž,©,ç8Žž,ìŠÔ,Å,ì”z'B□j,Ü,½,í□A”z'B“úŽw'è,đ,²—~—p,,¾,¾,¢□B
- □x•i,É,æ,Á,Ä,í□A'{}•Ö'...•¥,¢,đ,²—~—p,É,È,è,È,¢,à,ì,à,²,´,¢,Ü,· (%oo²<L□u□x•i,ì”“—□v,ì1.  
,ì□ê□#□j□BDOSfQ□[f€,í,Ù,Æ,ñ,ç,·,x,Ā%ooĀ“\,Å,·,ª□AWindowsfvf□fOf%of€  
,ì□ê□#□AŽ-'O,ÉP&AfvfFfAfvfFfA,É,“—â,¢□#,í,¹,,¾,¾,¢□B

## NIFTY-Serve fvfFfAfEfFfA'—à'ã□sfT□[frfX

NIFTY-Serve,É,²“ü%öï,ì•û,í□AfVfFfAfEfFfA'—à'ã□sfT□[frfX,à,²—~—p,É,È,ê,Û,·□B,½,¾,μ□A^È  
%ö²,ì,æ,π,É□\$CEÀ,ª, ,è,Û,·□B

1. CEÂ□!%öï^ö,ÂfNfCEfWfbfgfj□□[fh,ÂCE^□ï,³,ê,Ä,ç,é•û,ì,Ý—~—p%öÂ
2. ,·, x,Ä,ìfvf□□Of%of€,ì'—à,ª,Ä,«,é,í,¯,Ä,í,È,ç

1.,É,Ä,«,Û,μ,Ä,í□AfrfWfifXfAfJfEf“fg,ÂNIFTY-Serve,É“ü%öï,³,ê,Ä,ç,é□ê□‡,í□A,²—~—  
p,É,È,ê,Û,¹,ñ□B2.,É,Ä,«,Û,μ,Ä□A'—à%öÂ“\,Éfvf□□Of%of€,í“o~^—pŽt,É□uSW”Ô□+□v,ì•\<L,ª, ,è,Û,  
·□B•\<L,ì,È,ç,à,ì,É,Ä,«,Û,μ,Ä,í¹⁄⁴,ì,²“ü<à•û-@,ð,²—~—p,,¾,³,ç□B“o~^—pŽt,ð'—•tCEã□A^È  
%ö²,ìŽè□‡,É□],A,Ä'—àŽè'±,«,ð□s,ç,Û,·□B'—àŽè'±,«,¾,³,¯,Ä,·,Æ□A□π•i,ì'—  
•t□æ,ª,í,©,è,Û,¹,ñ,ì,Ä□A•K, “o~^—pŽt,ð'—•t,μ,Ä,,¾,³,ç□B,È,“ã<à,í—,CEŽ□ANIFTY-Serve,ì—~—  
p—z<à,É%öÄZZ,μ,Ä□z<□,³,¹,Ä,ç,½,¾,«,Û,·□B

- 1) GO SWREG ,Ä□ufVfFfAfEfFfAfCEfWfXfgfCE□[fvf‡“fZf“f^□□v,É“ü,è,Û,·□B
- 2) f□fj...□[,©,ç□u3. '—à'ã□sfT□[frfX□v,ð'í'ð,μ,Û,·□B
- 3) ŽŸ,É□u2. '—àfVfXfef€□v,ð'í'ð,μ,Û,·□B
- 4) '—àfVfXfef€,©,ç□A□u1:fVfFfAfEfFfA”Ô□+Žw”è□v,ð'í'ð,μ,Û,·□B
- 5) “o~^—pŽt,É, ,é□uSW”Ô□+□v,ð“ü—í,μ,Û,·□B
- 6) fvf□□Of%of€,ì•â'«□à-¾,ª•\Ž!,³,è,Û,·,ì,Ä□A•K, ,Šó-],ì,à,ì,©,Ç,π,©Šm”F,μ□A□u1:Šó-]  
,·,é□v,ð'í'ð,μ,Ä,,¾,³,ç□B

## □x•i,j”‘—

□x•i,í□A“ü<àŠm”FCEã,ì—X’—,Æ,È,è,Ü,·□i’{ }•Ö’...•¥,ç□œ,□j,ì,Å□A□x•i,ì“ž’...  
,É,í3“ú,©,ç1□TŠÔ’ö“x,Ý,Ä,“ ,ç,Ä,,¾,¾,ç□B,½,¾,μ□Afvf□fOf%of€ ,É,æ,Á,Ä,Í^È%º,ì,æ,x,È—áŠO,à,  
,è□A’—•t,æ’x,è,é□é□#,à,²,´,ç,Ü,·□B, ,ç,©,¶,ß,²□³’m,“ ,«,,¾,¾,ç□B

1. ŠCŠO,ì□ižÒ,©,ç,“<q—l^¶,É□x•i,æ’¾’—,³,è,é□é□#□B
2. fvf□fOf%of€,ìID”Ô□t□i“o~^”Ô□t□j,ðžæ“¾,·,é•K—v,ª, ,é□é□#□B
3. □ÝCEÉ□Ø,é“™ ,É,æ,é□x•i“ü%ºx’Ò,¿,ì□é□#□B

### 1.,ì□é□#

,²“ü<àCEã,“žèCE³,É“í,Ü,Ä,É□A’Ê□í2□`3□TŠÔ,©,©,è,Ü,·□B

### 2.,ì□é□#

fVfFfAfeFfFA”Å,ÉID”Ô□t,ð“ü—í,·,é,±,Æ,É,æ,Á,Ä□A“o~^”Å,Æ,È,é,æ,x,Èfvf□fOf%of€,ªŠY“—,μ,Ü,·□B  
—á,í,ÎWinZip,ª,±,è,É“—,½,è,Ü,·□B,²“ü<àCEã□A□ižÒ,É,“<q—l□é—p,ìID”Ô□t,ð\  
□¿,μ□A,» ,é,ªžæ“¾,Å,«žÝ’æ□A□x•i,ð”’—’v,μ,Ü,·□B’Ê□í2□`7“ú,ÅID”Ô□t,Ížæ“¾,Å,«,Ü,·,ª□A□ižÒ,ì  
ž—î,É,æ,è’x,è,é□é□#,à,²,´,ç,Ü,·□B

### 3.,ì□é□#

□x•i,É,Ä,« ,Ü,μ,Ä,í□A□ÝCEÉ□Ø,è,É,È,ç,Ê,æ,x’□^Ó,ð•¥,Á,Ä,“ ,è,Ü,·,ª□A—  
œ^è,ì□é□#,íP&AfvfFfAfeFfFA,©,ç,²~A—□,¾,¹,Ä,ç,½,¾,« ,Ü,·□B,Ü,½□”ž—î,É,æ,è□A,²’□•¶,ð,ç  
,½,¾,ç,Ä,©,ç,Ä,È,ç,Æ□A”□,Å,« ,È,çfvf□fOf%of€,ì□é□#□A“ü  
%ºx,Ü,Å,É1□`2□TŠÔ,©,©,é□é□#,ª,²,´,ç,Ü,·□B,±,ì□é□#,É,Ä,« ,Ü,μ,Ä,à,²~A—□’v,μ,Ü,·□B

# “o~^—pŽt

“o~^Šó-]fvf[]fOf%of€É^ó,đ,Â,˘,Ä,¾,³,¢[]B

	fvf[]fOf%of€-¼	“o~^— ž<à
[]@]	WinZip []iŠ@‘S“ú- {CEéfwf<fv•t,«[]j	4,000%~ SW”Ô[]t0313
[]@]	WinZip ^³[]kfpfbfN (LHA[]AARJ[]AfEfCf<fXCEŸ’mfvf[]fOf %of€Á,«[]j	5,000%~ []i’[]1[]j
[]@]	WinZip Self-Extractor (“ú- {CEéf}jff...fAf<•t,«[]j	6,000%~ []i’[]2[]j
	“o~^—ž<àCEv	%~
	[]Á”i[]Á (3%)	%~
	,˘Žx•¥,¢—ž<à	%~

(‘[]1) WinZip ^³[]kfpfbfN,í[]AWinZip[]i4,000%~ ,ì,à,ì[]j,ÉLHA.EXE,âARJ.EXE,È,Ç,ÌŠO•“fvf[]fOf%of€  
,Æ[]AWinZip[]ã,©,çŽg—  
p,Ä,«,éEfCf<fXf`fFfbfj,đŽú~^ ,µ,½ftf[]fbfs[] [fffBfXfN,đ,Â,˘,¾,à,ì,Ä,˘[]B,˘,Ä,ÉLHA“™ ,đ,˘Ž[],ž,ì[]é[]ž,  
Í•s—v,Ä,˘,³[]AWinZip,â^³[]kftf@fCf<,É,Ä,¢,Ä, ,Ü,è’mŽ˘ ,³,È,¢,Æ,¢,¸[]é[]ž,Í^³[]kfpfbfN,ì,Ü,¸  
,đ,˘E,ß,µ,Ü,˘[]BWinZipŽ˘‘Í,Í˘,¶,Ä,˘[]B

(‘[]2) WinZip Self-Extractor,íWinZip,Æ,Í’S,•Ê,lfvf[]fOf%of€Á,˘[]BWinZip,ì,æ,¸,È^³[]k,â%~đ“€,ì<@“\  
,Í^é[]ž, ,è,Ü,¹,ñ[]B,±,é,íZIPftf@fCf<,©,çWindowsfx[] [fX,ìŽ˘CEÈ  
%~đ“€EXEftf@fCf<,đ[]j[]˘,˘,é,ì,Ý,ì<@“\,Ä,˘[]BZIPftf@fCf<,ì^³[]k[]E%~đ“€,đ[]s,¢  
,½,¢[]é[]ž,í[]AWinZip,đ,˘Žg,¢,¾,³,¢[]B

- ‘{>}•Ö...•¥,¢,đ,²—~—p,ì[]é[]ž,í[]A[]ã<L[]u,˘Žx•¥,¢—ž<à[]v,É‘ã^ø,«Žè[]” —ž,đ721%~  
%~ÁŽŽ,µ,Ä[]ž<[]³,¹,Ä,¢,½,¾,«,Ü,˘[]B
- fvf[]fOf%of€Í’Êí[]A“ü<àŠm”FCEã[]A1[]TŠÔ‘ô“x,Ä,˘ŽèCE³,É“Í,«,Ü,˘,³[]A[]ÝCEÉ[]ø,é“™ ,Ä’—  
•t,³x,è,é,±,Æ,³, ,è,Ü,˘[]B%~½’²CEä—¹[]³%~º,³,¢[]B

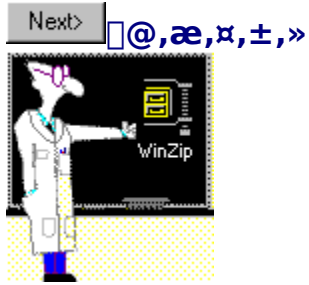
ìø¶å	:
,˘-¼’O	:
—X•Ö”Ô[]t	:
ìø¶å	:
,²[]Z[]Š	:
TEL (FAX)	:
NIFTY-Serve ID	:
E-mail	:
P&A ID	:
,˘Žx•¥,¢•û-@	[ ] —X•Ö[]U’Ö
	[ ] <â[]s[]U[]ž

[ ] CE»à□'—

fj□[fh"Ô□+ [ ] MASTER [ ] VISA [ ] DC [ ] AMEX  
 —LCEøŠÚCEÀ :  
 'î<}•Ö-éŠÔŽw'è [ ] Šó-],,é [ ] Šó-],μ,È,¢  
 'î<}•Ö"z'B"úŽw'è [ ] Šó-],,é [ ] Šó-],μ,È,¢  
 fVfFfAfEfFfA"Å,ì"üŽè□ [ ] Šó-],,é [ ] Šó-],μ,È,¢  
 æ □i CEŽ  
 "ú"z'BŠó-]□j  
 ;,Ž□,¿,lfRf"fsf...□[f^ :  
 -<sup>3</sup>—¿fjf... [ ],í,¢ [ ],¢,¢,¿  
 □[fyfCEf^□[Šó-]

**,<sup>2</sup>□^Ó!!**

1. □ufj□[fh"Ô□+□v□A□u—LCEøŠÚCEÀ□v,ÍfNfCEfWfbfgfj□[fh,ð,<sup>2</sup>~—p,ì□ê□‡,ì,Ý,<sup>2</sup><L"ü,,<sup>3</sup>/<sub>4</sub>,<sup>3</sup>,¢□B
2. □u'î<}•Ö-éŠÔŽw'è□v□A□u'î<}•Ö"z'B"úŽw'è□v,Í'î<}•Ö'...•¥,¢,ð,<sup>2</sup>~—p,ì□ê□‡,ì,Ý%oÅ"\,Å,·□B
3. fjf...□[fyfCEf^□[ì,ÝŠó-],ì•ú,í□A□u-<sup>3</sup>—¿fjf...□[fyfCEf^□[Šó-]□v,ì□u,í,¢□v,É^ó,ð,Â,¬□AFAX□A—X•Ö□A—" ,Í"dŽqf□□[f<,É,Ä'—•t,,<sup>3</sup>/<sub>4</sub>,<sup>3</sup>,¢□B



, ±, ñ, É, ï | WinZip f... [f^ [L, Ä, · B, í, ¶, ß, Ä WinZip, ð, ? Žg—p, É, È, é, , È, ½, ì, " Žè"`, ç  
, ð, µ, Ü, · B ftf"fvf<ftf@fCf<, ð%øð"€ , µ, ½, è AZIPftf@fCf<, ì ì ì ì · ù - @, ð ð ð " Ò, É ^ Ä " à, µ, Ä, ç  
, «, Ü, · B, Ü, ½ WinZip, É, ì, ½, , ð, ñ, ì — D, è, ½ < @ " \, ¢, , è, Ü, · B, ±, ì fCf b f X f " , ð' É, µ, Ä, » , ì < @ " \, ð • x < , µ, Ä, ç, «, Ü, µ, å, æ B

f` f... [f^ [L, ì Žg, ç • ù, ð' m, é, É, í f` f... [f^ [L, ì Žg, ç • ù, ð f N f Š f b f N, µ, Ä, , ¾, ¾, ç

- [f f... \[f^ \[L, ì Žg, ç • ù](#)
- [ftf@fCf<, ì %øð"€](#)
- [ZIPftf@fCf<, ì ì ì ì](#)
- [f` f... \[f^ \[L, ì ì — 1](#)



Next> @f`f...[f^[],ižg,ç•û@1/3

WinZip,đžg,Á,Ä^³kE%đ“€,ì,»ê,¼ê,ìfXfefbfv,đ%đà,μ,Û,·B

fXfefbfv,²l,í,è,Û,μ,½,çA%º,É, ,é Next> f{f^f“,đfNfŠfbfN,μ,Ä,,¾,³,çB

Back f{f^f“,đfNfŠfbfN,·,è,ÎA'O,ìfXfefbfv,É-ß,é,±,Æ,²o—^,Û,·B  
,±,ì,æ,²,É¼,ì•¶žš,Æ^á,Á,ÄCE©,!,é,Æ,±,è,ÎA,»±,đfNfŠfbfN,·,é,±,Æ,ÄAfncf%ofCfg,μ,Ä,ç  
,é•“ª,ÉSÖ,·,éî•ñ,đ¾,é,±,Æ,²o—^,Û,·B

Back

Next>

,±.İfEfBf“fhfE,İfİfbfvfAfbfv,Å,.BWinZip,ÉŠÖ,.éÚ,μ,çî•ñ,ªCE»,ê,Û,.B

Next>

@f`f...[f^[],iŽg,ç•û@2/3

f`f...[f^[],Æ¼,ìEfbf“fhfE,íf`f...[f^[],ÆWinZip,àì<Æ,à,μ,â,·,ç,æ,π,É“®,©,μ,½,è‘â,«,³,ð•ï,!,é,±,Æ,à,Â,«,Û,·B

fEfbf“fhfE,ìf^fcgjf:fo[],ðf}fEjX,ì{f{f^f“,Åfhf%ofbfO,μ,Ä%œ-Ê,ìD,«,È,Æ,±,è,É“®,©,μ,Ä,-,¾,¾,çBfEfbf“fhfE,ìR[]fi[],ðfhf%ofbfO,·,é,±,Æ,À‘â,«,³,ð•ï,!,é,±,Æ,ào—^,Û,·B

Back

Next>

Next> @f` f... [f^ [ ,ižg,ç•û @3/3

fEfBf“fhfEfY,ìfGfNfXfvf [f% [ ,đŽg,Á,Äftf@fCf<,đ%đ“€  
,μ,Ä,Ÿ,Ü,μ,â,⌘ WinZip,đŽg,Á,Äftf@fCf<,đ%đ“€,.é,É,Í,½,,³,ñ,ì•û-@,ª,è,Ü,.,ªA,±,ì•û-@,ªÄ,àŠÈ’P,Å•Ö  
—,Ä,μ,â,⌘B



,à,μfGfNfXfvf [f% [ ,đŠJ,ç,Ä,ç,È,È,ç AfGfNfXfvf [f% [ ,đŠJ,ç,Ä,,¾,³,ç B,±  
,ìfAfCfRf“,đfNfŠfbfN,.,é,ÆfGfNfXfvf [f% [ ,ªŠJ,«,Ü,·B

fGfNfXfvf [f% [ ,Æf` f... [f^ [ ,ª“~Žž,ÉŽg,ì,é,æ,⌘  
,É AfEfBf“fhfE,đ“® ,©,μ,½,è AfTfCfY,đ•ì,ì,Ä,,¾,³,ç B

ftf@fCf<,ì%đ“€,És,,É,Í Next> f{f^f“,đ Af` f... [f^ [ ,ìÅ% ,É-ß,é,É,Í-ÚŽŸf{f^f“,đfNfŠfbfN,μ,Ä,-  
,¾,³,ç B

Back  
Next>

☐@ftf@fCf<,ì%øð“€☐@1/7

—û☐K,ì,½,B,É“Á•Ê,ÉEXAMPLE.ZIP,ð“ü,è,Ä,“,«,Ü,μ,½☐B

fGfNfXfvf☐☐[f%☐[,ÄEXAMPLE.ZIP,ðŽw’è,μ,Ä,,¾,¾,☐BŽ,,ì,ÍC:\DOWNLOADffBfCefNfgfŠ,É, ,è,Ü,·☐B, ,È,½,ì,íWinZipf`f...☐[f^☐[.ìftf@fCf<,ì, ,éfffBfCefNfgfŠ,É, ,è,Ü,·☐B

f`f...☐[f^☐[,ÆfGfNfXfvf☐☐[f%☐[.ìfEfBf“fhfE,í,Á,«,é,¾,¾,·Ö—~,È,æ,π,É“®,©,μ,½,è’â,«,¾,ð•Ï,ì,é,±,Æ,ª,Ä,«,Ü,·☐B

Back
Next>

Next>

@ftf@fCf<,i%ođ“€@2/7

f}fEfX,iqf{f^f“,ÅEXAMPLE.ZIP,đf\_fuf·fNfŠfbfN,μ,Ä,,¾,¾,čB

WinZip,šŽ©“@“I,ÉŠJ,«,Ü,·B

•K—v,È,ç,îf`f...[f^[,Æ“~Žž,Éžg,ı,é,æ,ɣ,ÉWinZipf\_fCfAf[]fO,đ“®,©,μ,Ä,,¾,¾,čB

Next>

Next>

Next> @ftf@fCf<,i%ođ“€@3/7



WinZip, i f{f^f“,đfNfŠfbfN,μ,ÄAEextractf\_fCfAf\_fO,đŠJ,č,Ä,,¾,¾,čB  
,Ä,íAZ,,íZIPftf@fCf<,i'tg,i%ođ“€æffBfCefNfgfŠ,đŽw'è,μ,Ü,·B

C:\DOWNLOADS\EXAMPLE  
Extractf\_fCfAf\_fO,Ä%ođ“€æ,íftfHf<f,âffBfCefNfgfŠ,đ'í'đ,Ä,«,Ü,·B

%ođ“€æ,đ'í'đ,μ,Ä,,¾,¾,čB Next> ,±,±,đfNfŠfbfN,μ,ÄŽ,,i,μ,Ä,č,é,±,Æ,ÆA, ,È,½,ìi“x,đf`fFfbfN,μ,Ä,-  
,¾,¾,čB  
Ž,,íŽw'è,μ,½EXAMPLEffBfCefNfgfŠ,í'¶Y,μ,Ü,¹,ñ,AWinZip,Ž©“@“I,É,Á,Ä,,é,Ü,·B

Next>

Next>

Next>

@ftf@fCf<,i%oδ“€@4/7

ftf@fCf<,δ%oδ“€,.é,½,B,É

Extract

f{f^f“,δfnfšfbfN,μ,Ä,,¾,¾,çB

,±,é,ÄEXAMPLE.ZIPftf@fCf<,i'tg,a%oδ“€,,é,Ü,μ,½B'¬,,ÄŠÈ'P,Ä,μ,½,ËB

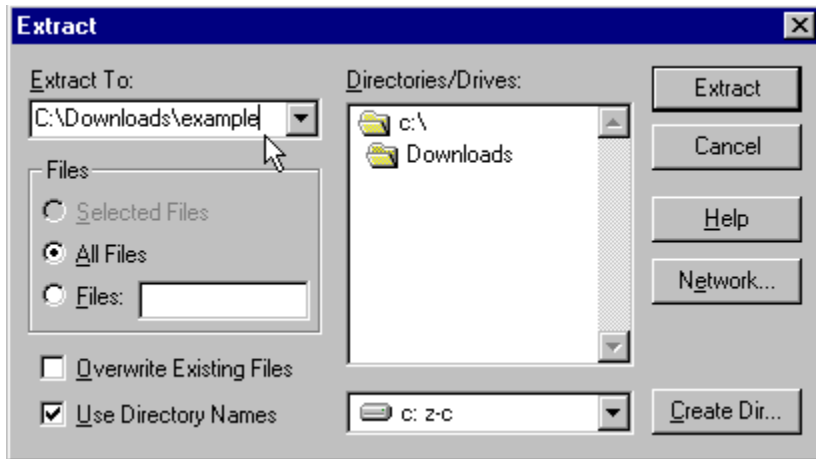
%oδ“€,lfCefbfXf“,δl,í,é'O,É•Ö—~EWinZip,i'Á'¥,δ,“©,¹,μ,Ü,μ,â,æB

WinZip,ÄEXAMPLE.ZIPftf@fCf<,i't,É,R,Ä,iftf@fCf<,a, ,é,±,Æ,δŠm”F,μ,Ä,,¾,¾,çB

Next>

Next>





Next> @ftf@fCf<,i%ođ“€@5/7

WinZipfEfBf“fhfE,ÅREADME.TXT,đf\_fuf<fNfŠfbfN,μ,Ä,,¾,¾,¾,¾B



TXT,Æ,ç,πŠg'£Žq,ÉŠÖ~A,Ä,~ç,ê,½fvf□fOf%of€□i'É□í,lf□f,' □j,ªŽ©“@“I,É<N“@,·,é,í,,Ä,·□B,»,)ftf@fCf<,đ“Ç,  
ň,ÅREADMEftf@fCf<,É,Ä,ç,Ä•x<,μ,Ä,,¾,¾,¾,¾B

Next>  
Next>

Next> @ftf@fCf<,i%oδ“€@6/7

ZIPftf@fCf<,i'tg,δ•Ê,i•û-@,Â,àCE©,é,±,Æ,ª,Â,«,Ü,•BWinZip,ìfEfBf“fhfE,ì't,ìFILE\_ID.DIZ,Æ,ç,çftf@fCf<,δfvf“fOf<fNfŠfbfN,Â”½“]•Ž!,³,¹,Ü,•B

ffffHf<fg,ìrf...[fA,δŽg,±,±,Æ,ª,Â,«,Ü,•,ªAWinZip,ìfc[f<fo[l,É, ,é[View]f{f^f“,δfNfŠfbfN,μ,Ä, ,ç,í,ê,éf\_fCfA f[fOf{fbfNfX,ìA[Internal ASCII Text Viewer],ìq,ìŠÛ,δfNfŠfbfN,μ,ÄA[View]f{f^f“,δfNfŠfbfN,μ,Ä,,¾,³,çB

,»±,•,ê,ìAZIP,ì<Lqftf@fCf<,ìFILE\_ID.DIZ,δ“Ç,p,±,Æ,ª,Â,«,Ü,•B

Internal ASCII Text Viewer

,±,ì,±,Æ,í,•,x,Ä%oδ“€€ì,È,μ,És,±,±,Æ,ª,Â,«,Ü,•B

Next>  
Next>

**ŠÖ~A,Ä,-**

, ,éŽí,İŠg'£Žq□ifsfŠfIfh,æ,èĈĚă,ë,ì,R•¶Žš□j,đ,à,Âftf@fCf<,đf\_fuf<fNfŠfbfN,μ,½,Æ,«□A,»,İŠg'£Žq,ÉŠÖ~A,Ä,-, ç,ê,½fvf□fOf%of€,ăŽ©“@“l,É<N“® ,μ,Ä,»,İftf@fCf<,đ“Ç,Ý□ž,Ý,Ü,·□B□Ú,μ,í□AWindows95,İf}ffj... fAf<,Ü,½,İfwf<fv,đ“Ç,ň,Ä,,¾,¾,¾,č□B

Next> @ftf@fCf<,i%ođ“€@7/7

WinZip,Åftf@fCf<,đ%ođ“€,.é,±,Æ,ªA,Ç,ê,Û,ÇŠÈ'P,©,“,í,©,è,É,È,Á,½,Å,μ,â,æ,©H

Next> ±,±,đfNfŠfbfN,·,é,Æf`f...[f^[,đi,í,è,Û,·B  
Next,đfNfŠfbfN,·,é,ÆZÿ,lfÆfbfXf“,É^U,è,Û,·B

Next>

Next> Zipftf@fCf<,i`i`-`

Next>

@ZIPftf@fCf<,i`-@1/5

æ, Û, Ç%øð“€ , μ, ½ftfBf<, ð^³k, μ, Ä, Ý, Û, μ, å, æB

fXf^ [fgf fjf... [l, Ü, ½, í, ²Žg—p, lf fjf... [fVfXfef€ , ©, çWinZip, ðŠJ, ç, Ä, , ¾, ³, çB

•K—v, È, ç, ÎAf`f... [f^ [l, ð“Ç, Ý, È, ª, çWinZip, Ä`i<Æ, Ä, «, é, æ, æ, ÉWinZipfEfBf“fhfE, ð“ ® , ©, μ, Ä, , ¾, ³, çB

Next>

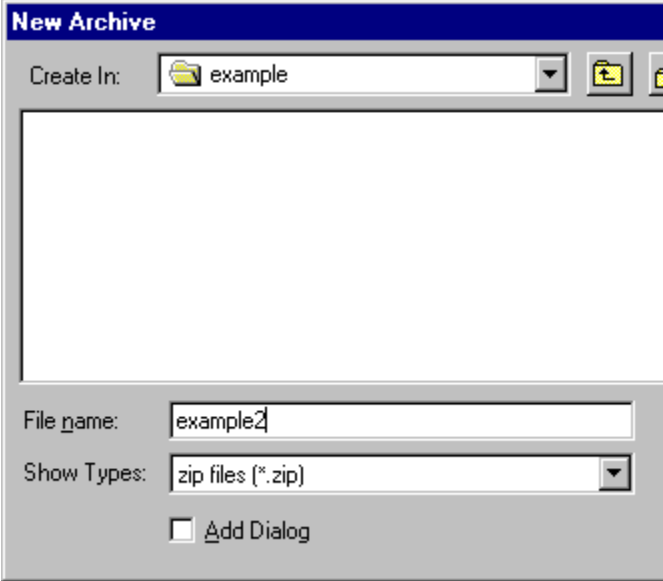
Next>



Next>

@ZIPftf@fCf<,iïï-ï@3/5

%oº,ì,æ,æ,ÉïV,µ,çZIPftf@fCf<,i-¼'O,Æ,µ,ÄEXAMPLE2,Æ“ü-í,µAOK,öfNfŠfbfN,µ,Ü,·B



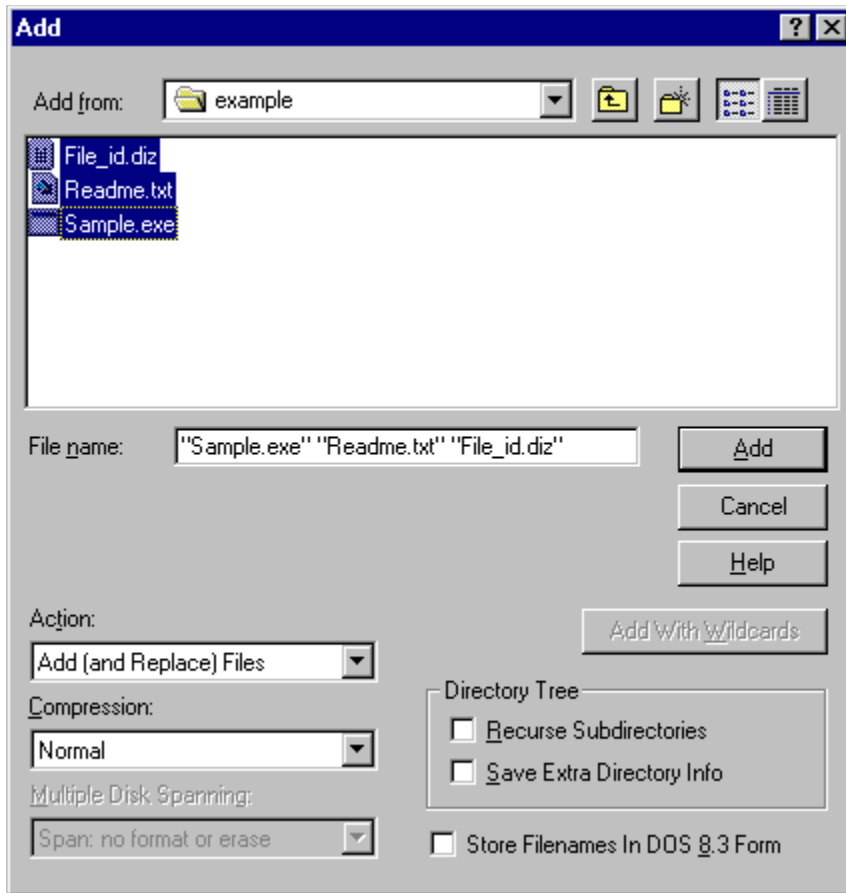
,±,é,Íïj,©,çï,ë,æ,Æ,µ,Ä,ç,éZIPftf@fCf<,i-¼'O,Å,·B

Next>

Next>







Next> @ZIPftf@fCf<,ìì-@5/5

WinZip,Åftf@fCf<,ð%øð“€E^³k,·,é,±,Æ,ªA,Ç,ê,Û,ÇŠÈ'P,©,“,í,©,è,É,È,Á,½,Å,μ,å,¤,©H

Next> ,±,±,ðfNfŠfbfN,·,é,Æf`f...[f^[,ðl,í,è,Û,·B

Next> -ÚŽŸ,ðfNfŠfbfN,·,é,ÆÅ%ø,ìfðff...[,É-ß,è,Û,·B

Next>

Next>

Next> @WinZip` f...[f^[]l]—1

WinZip,É,Í,Ü,¾,Ü,¾¹²,,ì“Á’¥,ª, ,è,Ü,·BWinZip,ðŽg,Á,Ä,ç,é,Æ,«,í,ç,Â,Â,àF1fL[],ð  
%oÿ,·,©,Ü,½,íHelpf[]ffj...[],ðfNfŠfbfN,μ,ÄŠ@‘S,ÈWinZip,ìfwf<fv,ðCE©,é,±,Æ,ª,Â,«,Ü,·B

Next> ,±,±,ðfNfŠfbfN,·,é,Æf` f...[f^[]l,ð[]l,í,è,Ü,·B

Next> -ÚŽŸ,ðfNfŠfbfN,·,é,Æ[]Á[]%o,ìf[]ffj...[],É-ß,è,Ü,·B

Next> WinZipf` f...[f^[]l,ÆŽžŠÔ,ð%oß,²,μ,Ä,,é,Ä, ,è,ª,Æ,¤[]BŽ,,,ì‘â[]D,«,Èfvf[]fof%of€,ÁŠy,μ,ñ,Á,-  
,¾,¾,ç[]B

Copyright 1995-96 Nico Mak Computing, Inc.

This Tutor is a creative collaboration with

Wordsmith Associates

## OSADA Yasushi

,Í,Í,Á□A,æ,,±,±,ðŒ©,Â,¯,Ü,μ,½,Ë□B(^:)  
,±,±,ðŒ©,Â,¯,é,Æ,Í□A,½,¾ŽÒ,¶,á,È,ç,Ä,·□B

,±,Ìfwf<fv,Ì□iŽÒ,Í'·“c□@□N(Deckard),Ä,·□B  
fo□[fwf†f“,Í1.71,Ä,·□B  
1996-12-27-pm0:25,É□i□¬,³,ê,Ü,μ,½□B  
,±,Ìfwf<fv,ÍRoboHelp,ðŽg—p,μ,Ä□i□¬,³,ê,Ä,ç,Ü,·□B

## Version History

- 1.0 Original
- 1.4 Instruction Only
- 1.5 Plus Order info
- 1.6 Plus FAQ
- 1.7 FAQ Improvement
- 1.71 Improvement

