



,i,...,”,b,n,l,u,lfwf<fv

Copyright (C) 1995-1996 I-O DATA DEVICE, INC.

JetCOMV, íAWindowsã, ÅŽÀs, ³, ê, é'ÊMfAfvfŠfP[fVf#f“, ì'ÊM' -“x, ð<-
[]\$“l, É•ïX, , é, ½, ß, ìf+[]fefBfŠfefB[]l, Å, ·B

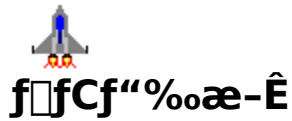
**COM1, ©, çCOM4, Ü, Å'í%ž, µ, Ä, ”, èAÅ, 115.2kbpsiRSA-
DV¼Ø°½p, Å, í921.6kbpsj, ðo, ¹, Ü, ·B**

-ÚŽŸ

.í, ¶, ß, É

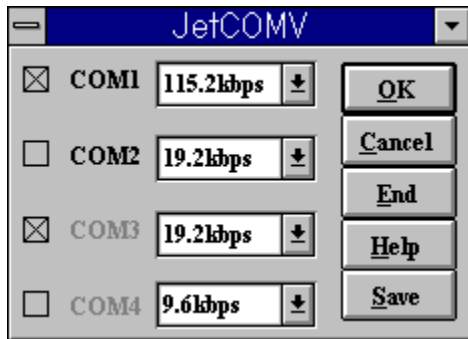
f[]fCf“%œ-Ê

'[]^ÓŽ-[]€



Copyright (C) 1995-1996 I-O DATA DEVICE, INC.

à-¼,ð•\Ž|,³,¹,½,ç€-Ú,ðA%º,ì%œ-Ê,©,ç'l'ð,μ,Ä,,¾,³,çB



@ã,ìÝ'è,ÅOK,ð%ÿ,.,ÆAZÿ,ì,æ,α,ÉÝ'è,³,ê,Ü,·B
 COM1,í|[]fvf",μ,Ä,"è'ÊM'¬"x,í115.2kbps,É•ïX,³,ê,Ü,·B
 COM2,í|[]fvf",μ,Ä,ç
 ,Ü,·,ª'ÊM'¬"x,ì•ïX,Í,³,ê,,A'ÊMfAfvfŠfP[]fVf+f",ìÝ'è,ì,Ü,Ü,Å,·B
 COM3,í|[]fvf",μ,Ä,ç
 ,Ü,¹,ñ,ªf|[]fvf",μ,½uŠÓ,É'ÊM'¬"x,ª19.2kbps,É•ïX,³,ê,Ü,·B
 COM4,í|[]fvf",μ,Ä,ç,Ü,¹,ñB,Ü,½Af|[]fvf",μ,Ä,à'ÊM'¬"x,ì•ïX,Ís,ç
 ,Ü,¹,ñB

[f` fFfbfNf{fbfNfX]

,»,ìCOM,ìÝ'è'l,ð—LCEø,É,·,é,©,Ç,α,©,ðŽw'è,μ,Û,·□B
Ý'è'l,ð—LCEø,É,μ,½,φ,Æ,«,í□Af` fFfbfNf{fbfNfX,ðf` fFfbfN,μ,Ä□AOK,ð%ö,μ,Ä,-
,¾,³,φ□B
f` fFfbfNf{fbfNfX,ð<ó'''',É,μ,ÄOK,ð%ö,·,Æ□AJetCOMV,ìÝ'è,ª-
³CEø,Æ,È,è□A'Ê□MfAfvfŠfP□[fvf†f'',ìÝ'è,ª—LCEø,Æ,È,è,Û,·□B

['Ê M' - "x Y' è f { f b f N f X]

CE » Y' I' ð, ³, ê, Ä, ç, é' Ê M' - "x, ð Ž |, μ, Ü, · B

' - "x, ð • İ X, ·, é, Æ, «, í A, ±, ±, Å' I' ð, μ, Ü, · B

™ COM f h f % o f C f o, ð - ~ - p, μ, Ä Y' è, ·, é f, [f h, ì, Æ, « A, » , ì COM, a f [f v f " , ³, ê, Ä, ç

, é Ž Ž, í A Ž g - p % o Ä " \, È Ê M' - "x, ì, Ý \ Ž |, ³, ê, Ü, · B COM, a f [f v f " , ³, ê, Ä, ç

, È, ç Ž Ž, í 115.2 kbps i RSA-

DV ¼ Ø ° ½ p, Å, í 921.6 kbps j, Ü, Å' I' ð, í, Å, «, Ü, ·, a A Ž À Ü, É Ž g -

p, Å, «, È, ç' Ê M' - "x, í' I' ð, μ, È, ç, æ, x, É, μ, Ä, , ¾, ³, ç B

™ COM f h f % o f C f o, ð - ~ - p, μ, È, ç

, Å Y' è, ·, é f, [f h, ì, Æ, «, í A 115.2 kbps, Ü, Å' I' ð, Å, «, Ü, ·, a A, » , ì f } f v f " , Å Ž g, ì, é' - "x, ð Ž

w' è, μ, Ä, , ¾, ³, ç B

[,n,j]

Œ»`Ÿf`fFfbfN,³,ê,Ä,ç,éCOM,ì'ÊM'¬“x,ð<-
\$“l,É•íX,μ,Û,:B“~Žž,ÉfAfCfRf“%o»,μ,Û,:B

[,b,` ,m,b,d,k]

□Ý'è'l,ðœ³,É,à,Ç,μ,Û,·□B

[,d,m,c]

JetCOMV,đ□I—¹,μ,Ü,·□B'Ê□M'¬“x,í□AWindows,ÌŠÇ—□%°°,É,“,©,ê,Ü,·□B

[,r,`,u,d]

Œ»Ÿ,ìŸ'è,đfZ[fu,μ,Ü,·BWindowsfffBfŒfNfgfŠ,É"JETCOMV.INI",ªìŸ-,³,ê,Ü,·
BZŸ%oň<N"® Žž,É,í,±,ìŽž,ìŸ'è,Å<N"®,μ,Ü,·B

[,g,d,k,o]

f w f < f v , đ • \ ž | , μ , Ü , · □ B

[Å¬%»f{f^f“]

fEfCf“fhfE,đfAfCfRf“%»»,μ,Ü,·B



Í,ŀ,ß,É

Copyright (C) 1995-1996 I-O DATA DEVICE, INC.

JetCOMV,íAWindows3.1ã,Á'ÊM,ðs,žž,ì'ÊM'¬“x,ðÁ'á115.2kbpsiRSA-DV¼Ø°½p,Á,Í921.6kbpsj,ÉY'è,·,éft[fefBfŠfefB,Á,·B

Žg—p•û-@

‡@ %ñ<N“®Žž,ì,ÝACOMfhf%ofCfo,ð—~—p,μ,ÄY'è,·,é,©,Ç,ž
,©,ìŠm”F,ìf fbfZ[fWf{fbfNfX,ª•\Ž,³,ê,Ü,·Bh,ç,ç,ìh,ð'l'ð,·,é,ÆACOMfhf
%ofCfo,ìTfj[fq,μ,Ä,ç,éÄ, 'ÊM'¬“x,ÉŠOEW,É,-
A115.2kbps,Ü,ÄY'è,Ä,«,Ü,·B

‡AZ©•ª,ìŽg—p,μ,½,çCOM,ìY'è,ðs,ç,Ü,·B
1) Y'è,μ,½,çCOM,ìf fFbfNf{fbfNfX,ðf`fFbfN,μ,Ü,·B
2) Y'è,μ,½,çCOM,ì'ÊM'¬“x,ðŽw'è,μ,Ü,·B
3) ŽY%ñ<N“®Žž,©,ç,±,ìY'è,ð—LCEø,É,·,é,½,ß,ÉSAVE,μ,Ä,,¾,¾,çB
,Ü,½AZY%ñ<N“®Žž,©,ç,ìCOMfhf%ofCfo,ðŽg—p,μ,ÄY'è,·,é,©,Ç,ž
,©,ìŠm”Ff fbfZ[fW,Í•\Ž,³,ê,Ü,¹,ñB[i,à,μ,à%ñ<N“®ó'Ô,É,μ,½,ç
,Æ,«,íAWindowsffBfçfNfgfŠ,Éì¬,³,ê,½JETCOMV.INI,ðíœ,μ,Ä,©,ç<N“®,³,¹
,Ä,,¾,¾,çBj

‡BY'è,μ,½,ç•K, OK,ð%Y,μ,Ä,,¾,¾,çBY'è,ª—
LCEø,Æ,È,èAJetCOMV,ìfAfçRf“%»»,³,ê,Ü,·B

‡C•ìX,ª•K—v,É,È,Á,½,çA•K, 'ÊM't,Á,È,ç
,ì,ðŠm”F,μAJetCOMV,Ä•ìX,μ,Ü,·B

‡Dì—¹,·,é,É,ÍEND,ð%Y,μ,Ä,,¾,¾,çBJetCOMV,ìY'è,ì-³CEø
%»»,³,êA'ÊM'¬“x,íWindows,ìŠÇ—
%º,É,“,©,ê,Ü,·BfXf^ [fgfAfbfv,É“o~^,μ,Ä,“,Æ•Ö—~,Á,·B

¡JetCOMV,ª<N“®,³,ê,Ä,ç,ÄACOM,ìY'è,ª—LCEø,É,È,Á,Ä,ç
,é,Æ,«,ÉA'ÊMfAfvfŠfP [fvfj“,Á,»,ìCOM,ì'ÊM'¬“x,ð•ìX,μ,Ä,àJetCO
MV,ìY'è,ª—Dœ,³,ê,Ü,·BfAfvfŠfP [fvfj“ª
,Á'ÊM'¬“x,ð•ìX,μ,½,çê‡,íAZg—
p,μ,½,çCOM,ìf`fFbfNf{fbfNfX,ðó””,É,μAY'è,ð-³CEø%»»,μ,Ä,-
,¾,¾,çB



'□^ÓŽ-□€

Copyright (C) 1995-1996 I-O DATA DEVICE, INC.

'□^ÓŽ-□€

1) □^—□'—“x

JetCOMV,ªŽÀ□s†,ÍÊ□MfAfvfŠfP□[fVf†f“ ,ì<N“ ®□E□I—¹□Ebps•ï□X□E□COMf|
□[fg•ï□X,ÉŽáŠ±ŽžŠÔ,ª,©,©,é,±,Æ,ª, ,è,Ü,·□B,±,ê,í□A□COMf|
□[fg,ì²□, □E'—“x•ï□X,É,©,©,éžžŠÔ,Å,·□B

2) 'Ê□M'—“x□Ý'è

JetCOM□A'Ê□MfAfvfŠfP□[fVf†f“ <ª,É□AŽg—p,Å,«,È,ç—I,È'Ê□M'—“x,ð'I'ð,μ,È,ç
,æ,ª,É,μ,Ä,,¾,¾,ç□B
fn□[fhfEfFfA,ìCEÁSE^È□ã,ì'Ê□M'—“x,ð'I'ð,·,é,Æ□A•¶Žš%»»,™,ª¶¶,¶,é□ê□¶,ª, ,
è,Ü,·□B

3) f,fff€,ìŽg—p

f,fff€,ð□Ú'±,μ,ÄŽg—p,·,é□ê□¶□AJetCOMV,í115.2kbps□iRSA-
DV¼Øº½p,Å,í921.6kbps□j,Ü,Å□o,¹,Ü,·,ª□Af,fff€,ª,» ,ì'—“x,É'í%ž,μ,Ä,ç,È,ç
,Æ115.2kbps,í□o,¹,Ü,¹,ñ□B,Ü,½□Afpf†fRf“ -{ 'ì,ª115.2kbps□o,¹,È,ç□ê□¶,à“—
l,Å,·□B
□@FAX,ð□s,ª□ê□¶,í,» ,ìCOM,ÉJetCOM,ðŽg—p,μ,È,ç,Å,-
,¾,¾,ç□BFAX,ì'Ê□M'—“x,í^è'è,Å, ,é,½,β□AJetCOM,ðŽg—p,μ,Ä,à-³^Ó-i,Å, ,è□A□X
,Éf,fff€,É,æ,Å,Ä,íFAX,Å,«,È,ç□ê□¶,à, ,è,Ü,·□B

4) JETCOMV.EXE,ìŠÅ««ftf@fCf<

SAVE,ð,·,é,Æ□A%º,ì,æ,ª
,ÉJETCOMV.INI,ªWindowsfffBfCefNfgfŠ,É□ì□—,³,è,Ü,·□B□%
%ºñ<N“ ®□ó'Ô,É,³,¹,½,çŽž,í,±,ìftf@fCf<,ð□í□œ,μ,Ä,©,ç<N“ ®,μ,Ü,·□B
[Enable Comm Port]

Com1=1

Com2=1

.
.

[BPS Status]

Com1=6

Com2=6

.
.

[Option]

UseComDriverFlg=0
FirstFlg=0

[Enable Comm Port]

,»,ìCOM,ìJetCOMV,ìÝ'è,ì—LCEø□E-³CEø□ó'Ô,ðŽ!,μ,Û,·□B
1,â—LCEø□A0,â-³CEø,Å,·□B

[BPS Status]

,»,ìCOM,ìJetCOMV,ì'Ê□M'¬“x,ì□Ý'è'l,ðŽ!,μ,Ü,·□B

,±,ì'l,ìŽÝ,ì,æ,κ,É'î%ž,μ,Ä,φ,Ü,·□B

2:115.2 kbps

3: 57.6 kpbs

4: 38.4 kbps

5: 19.2 kbps

6: 9.6 kbps

[Option]

UseComDriverFlg,ÍCOMfhf%oofCfo,đ—~—p,·,é,©,Ç,α,©,đŽ!,μ,Û,·□B1,Å—~—
p,·,é□A0,Å—~—p,μ,È,ç,Å,·□B□%o
%oñ<N“®Žž,ÉĈ^'è,³,ê,Û,·□BFirstFlg,Í□í,É0,Å,·□B

[fVfXfef€f[]fjf...[]f{fbfNfX]

fVfXfef€f[]fjf...[][,ª•\Ž|,³,ê,Û,·[]B

[COMfhf%oofCfo,đ—~—p,μ,ÄÏÝ'è,·,é,©,Ç,κ,©]

□™ COMfhf%oofCfo,đ—~—p,μ,ÄÏÝ'è,·,é,é,□[fh,ìêê#□A,»,)COMfhf
%oofCfo,ìfTf|□[fg,μ,Ä,ç,é□Ä,ÏÏM'—“x,Û,Ä□o,¹,Û,·BCOMfhf
%oofCfo,¹115.2kbps□iRSA-DV¼Ø°½p,Ä,Í921.6kbps□j□o,¹,éêê#,Í,±
,ì,ç,ìf,□[fh,đ'ì'đ,μ,Ä,,¾,¾,ç□B□iCOMfhf%oofCfo,¹115.2kbps□o,¹,é,©,Ç,κ
,©'²,x,é,É,í□ACOMfhf%oofCfo,đ—~—
p,μ,ÄÏÝ'è,·,é,é,□[fh,Ä<N“®),μ□A'ÏMfAfvfŠfP□[fvf#“□if^□[f~fif<“™□j,ÄCOM,đf|□[
fvf“,μ,Ä,Ý,Ä,,¾,¾,ç□B□•Žš,É,È,Á,Ä,ç,éCOM,ì%oi,ìfRf“f{f{fbfNfX,É“ü,Á,Ä,ç
,é,ì,¹□AZg,ì,éÏÏM'—“x,Ä,·□B□j
RSA-DV¼Ø°½p,Ä,í□A,±,ìf,□[fh,đ'ì'đ,μ,Ä,,¾,¾,ç□B

□™ COMfhf%oofCfo,đ—~—p,μ,È,ç,ÄÏÝ'è,·,é,é,□[fh,ìêê#□Af,fff€□Efpf\
fRf“-{ì,¹115.2kbps,Éî%ž,μ,Ä,ç,é,í□ACOMfhf%oofCfo,ìfTf|□[fg,μ,Ä,ç
,é□Ä,ÏÏM'—“x,É,©,©,í,ç,,115.2kbps,Û,Ä□o,¹,Û,·□B

