



# 1997/2/10 version 1.4

, ±, ĩfwf<fvftf@fCf<, Æ□ATMIDI-{'ì, Æ, Åfo□[fWf†f", a^Ù, È, é<L□q, a, , é□ê□‡, a, , è, Û, ·, Ì, Å□A, , ç, ©, ¶, ß, ²-¹□³, , ¾, ³, ç□B

## '~□ìĈ

**TMIDI Player for Windows 95 version 1.4 [1997/2/10]  
Copyright(C) 1996,97 by T.Ohtake. All rights reserved.**

## "z•z□§ĈĖÀ

TMIDI, ĩftfš□[fvtfg, Å, ·□B, μ, ½, a, Á, Ä, ±, ĩftfvg, ÉŠÖ, ·, é~□ìĈ , ĩž,, ±, Æ'â'|  
•qžj, a•Ůž□, μ, Û, ·□B  
, Û, ½□A□Ā"z•z, ÉŠÖ, μ, Ä, ĩ□AžĀ"ĩ^ÉŠÖ, ĩ<à'K, ĩžöžó, a"º, í, È, çĈĖÀ, èž©—  
R, Å, ·□B" ]□Ů, ·, é□ê□‡, ĩ□Až-ĈĖă□³'ø, Å□\, ç, Û, ¹, ñ, Ì, ÅE-Mail, Å•ñ□□, μ, Ä, , ¾, ³, ç□B  
žGž□□^□'□Đ, È, Ç, ÉĈĖf□Ů, ·, é□ê□‡, ĩ□Až-'O, É□³'ø, a•K-v, Å, ·□B

## -³•Ů□ø

TMIDI, ðžg—p, μ, ½, ±, Æ, É, æ, é□A'¼□Ů, , é, ç, ĩšŮ□Ů"ĩ, È'¹šQ, ÉŠÖ, ·, é^ê□ø, ĩ□Ó"C, ð•%  
, ç, ©, È, Û, ·, Ì, Å, ²-¹□³, , ¾, ³, ç□B

## ~A—□□æ

E-Mail: **c396022@ns.kogakuin.ac.jp**  
, ½, Û, È'â" d, âfT□[fo□[.âf\_fĖf", μ, Ä, ç, é, Æ, «, a, , é, Ì, Å□A, » , Ì, Æ, «,  
**ĭc396022@ccs.kogakuin.ac.jp**, É, "šè, ç, μ, Û, ·□B

TMIDIftf□[fgfy□[fWURL **http://www.ns.kogakuin.ac.jp/~c396022/**

^ŮĈĖ©□A—v- ]□AfofOfĈĖf□[fg□Aš'z"™ □A'âš½ĈĖ}, Å, ·□B, "Ů, ĩ, μ, Ä, " , è, Û, ·□B  
"®□ĩ<@žĭ□Ažg—pMIDI I/F□Ažg—pšyšĩ, ð"Y, ĩ, Å, , ¾, ³, é, Æ'â•ĭ□•, ©, è, Û, ·□B

## žŮž«

, ±, ĩftfvg, ĩ□§□ì, È"- , ½, Á, Ä, ĩ□AžŸ, ĩ, æ, x, È□'□Đ□^ž'—ĩ, ðžQ□I, È, μ, Û, μ, ½□B  
Borland C++ 4.0/4.5/5.0še□à-¾□', Borland  
CVS ver.5.06□à-¾□', Hajime Koike, ³, ñ  
DirectDrawfvf□fOf%of~f"fO, Bret Timmins (•½—Ñ%œ%p-ó), äÄ%ojžĐ  
, Û, ®, è□[¾□[žd—ĭ□', Woody-RINN, ³, ñ  
MIMPI Ver.4.23 for PC-98, ĩ□à-¾□', f}fXf^□[fĭfbfg, ĩ□Ů"ĩ, ³, ñ  
MS-DOS 3.3C for PC-9801, ĩft□[fU□[fYfšftf@fĈĖf"fXf}fjf...fAf<, NEC  
SC-88□à-¾□', Roland  
The BASIC, æ, è □u•^—ĖfGfffBf^ , ð, Å, , è, x□v, —ÑĈĖç~Y, <Z□p•]~žĐ  
VSC-55žž—p"Ā□à-¾□', Roland  
Win32fĭf"f%ofĈf"fWf<fv(%pĈĖĕ"Ā), Microsoft  
Win32sfĭf"f%ofĈf"fWf<fv, Microsoft  
, v, %o, ž, , , , □, —  
, "fvf"fWf<ftf"fWf<fp□[fc, □ĖĈĖĕ"àšĈĖfĖBf"fhfĖfY<âšy•", <Z□p•]~žĐ  
%o%o□oĈĖnf□fjReference Manual, BUCHI, ³, ñ

%ü'ù □,□Z%°¹Šy,P,<³^çĈE|□pŽĐ  
□,□Z□¶,ì,½,ß,ì%°¹Šy3,<³^çĈE|□pŽĐ

,±,ìfvtfg,ì\$□ì,É,í□AŽŸ,ìfvtfg,đŽg—p,³,¹,Ä,ç,½,¾,«,Ü,μ,½□B  
Borland C++ 4.5/5.0, Borland

fwf<fvftf@fCf<,ì□□¬,ÉŽŸ,ìfvtfg,đ—~—p,³,¹,Ä,ç,½,¾,«,Ü,μ,½□B  
GV ver0.63b

,>,ê,©,ç□ATMIDI ver1.3,fx□[f^"Å,ìfofOfĈE|□[fg□A"®□ìŠm"F□AŠeBBS,Ö"□□Ú,đ,μ,Ä,-  
,¾,³,Á,½ŠF,³,ñ-{"-É, ,è,³,Æ,α,²,´,ç,Ü,μ,½□B

# ŠT—v

**TMIDI Player for Windows95**,í□AWindows 95□ã,Å“ ®,MIDI|fvfĀfCfĀ,,□[.Å,·.

‘Éí,ìMIDI|fvfĀfCfĀ,,□[.Æ^á,ċ□AMCI,đĀeo—R,¹,,É’¼□ÚMIDI|f□[fg,Éff□[f^,đ’—  
□M,μ,Ü,·,ì,Å□A’¼,ìfvfĀfCfĀ,,□[.É,í-³,ċ **2f**□[fg‘í%ž□**AfGf~f...fĀf□[fvfĀf“<@”\**  
□**A**,q,b,oftf@fCf<‘í%ž□**A”{‘-%oo‘tf**,□[fh□A%oot□»•**Z**!,É,Ç,ªŠy,μ,β,Ü,·□B

,Ü,½□AMIMPI ver.4‘Š“-ì%ž**ĀfCf**·**Z**!<@”\,ªŠy,μ,β,Ü,·□B

**Win32**fAfVfŠfP□[fvfĀf“ ,É,à, ©, ©, í,ç, □AS-MPU,ì,æ,π,ÈfCf“fefŠfWfFf“fg,ÈMIDI I/F,đŽg,í,È,-  
Ä,à□A%oo‘tfGf“fWf“,đWin16-DLL,É,·,é,±,Æ,É,æ,è□A, ©, È,è,ì%oo‘t^À’è“x,ª, ,è,Ü,·□B

**fŠfXfgftf@fCf**,đŽg—p,·,é,±,Æ,É,æ,è□A,b,c,ìfvf□fOf%ofĀ<@”\,ì,æ,π,È,±,Æ,ª,Å,«,Ü,·□B

ver1.4, ©, çLZHftf@fCf<‘t,ìMIDI|ftf@fCf<,đ%oo‘t,Å,«,Ü,·□B

**Ver1.4,Å’Ç%oÅ,³,é,½<@”\**

%oo‘t□ó<μ,đ•**Z**!,Å,«,é,æ,π,É,È,è,Ü,μ,½□BŠyŠí-  
¼□AŠefRf“fgf□□[f<f`fF“fW□AfM□[fg□î•ñ,ªĀ©,é,é,æ,π,É,È,Å,Ä,ċ,Ü,·□B  
fŠfXfg,đfAf<fofĀ%oo»,μ,ÄTMIDI,ìf□fjĀ...□[. ©, çĀĀ,Ñ□o,¹,é,æ,π,É,È,è,Ü,μ,½□B  
**ZáŠ±“** @ì,ª□,‘-%oo»,³,é,Ü,μ,½□B  
,X,WfOf%oftfBfbfNfLfff%ofNf^,đŽg—p,μ,Ä,ċ,éWRDftf@fCf<,É’í%ž,μ,Ü,μ,½□B  
32TRff□[f^,Å□A‘Sch,đ<□Š‘l,ÉAf|□[fg,É□o—í,Å,«,é,æ,π,É,È,Å,Ä,ċ,é,ì,Å□A,Pf|□[fg,μ, ©, È,-  
Ä,à’½□,í•,·,±,Æ,ª,Å,«,Ü,·□B  
LZHftf@fCf<‘t,ìMIDI|ftf@fCf<,đ%oo‘t,Å,«,Ü,·□B



TOSHIBA XM-5401B (ATAPI CD-ROM)  
Western Digital 2635 (IDE 635MB HDD)  
Diamond Speed Star 64 (CL-GD5434 Alpine)256 F^È ä, ì, ·, x, Ä, ì%œ-  
Êf, [fh, ÅŠm" F  
Sound Blaster 32 (RAM, , èGSfpfbf` )

ŠÂ«3

98EÝŠ·<@ ŽÀ—p“l,È’¬“x,ª□o,Ü,¹,ñ,Å,μ,½ ( ^ ^ ;  
, , >, ç, f r f f f ! f j □ [ f h, ª' x, ç, ì, ªE' ^ ö, Å, μ, å, ª  
EPSON PC-486SR i486SX 33MHz  
DPES-31080 (SCSI HDD 1GB)  
FUJITSU M2511A (128MB MO)  
NEC CD-ROM:210 (2" { ' ¬ CD-ROM)  
MELCO WAB-EP (CL-GD5428)

# fCf“fXf9□lf<

%øđ“€„μ„½ftf@fCf<„ð„P„Â„lftfHf<f\_„É“ü„ê„Û„·□B

•K—v„Èftf@fCf<„Í**TMIDI.EXE TMIDI16.DLL TMIDI32.DLL TMIDI.HLP TMIDI.CNT  
MODULE.DEF**„ì„U„Â„Å□**ADEFAULT.MAG DEFAULT.WRD**„Í“ü„ê„é„±„Æ„ð□„„§„μ„Û„·□B

TMIDI.EXE„ð<N“®„μ„Ä□A□f□ffj...□[„ì[**fifvfj#f“]-[□Ý’è]**  
,ðfNfŠfbfN„·„é„ÆŠÂ<«□Ý’èf\_fCfA□fO„ª□o„Û„·□B„»„ê„¼„ê„ð“K“-„ÉŽw’è„μ„Û„·□B**MIDIgf~f...**  
**fCE□[fVf#f“**„É„ÍŽ©•ª„ÌŽg—p„μ„Ä„ç„é%ø¹CE¹„ð“o~^„μ„Û„·□B

SC-88„ðfVfŠfA□f<□Ú’±„μ„Ä„ç„é□l„Í**MIDI“]’—**  
**fCE□[fg„ì’²□®**„ðf`fFfbfN„·„é„Æf□fbfZ□[fW„ìŽæ„è„±„Ú„μ„ª„È„È„è„Û„·□B(„»„ì„©„í„èfef“f|  
,ª„à„½„è„Û„·)

ŽŸ„É**ftf@fCf<f^fCfv**f^fu„ð%øŸ„μ„Û„·□BŠÖ~A•t„¯„½„çŠg’£Žq„ð„·„x„Äf`fFfbfN„μ„Û„·□B

□ÅCEã„É**OK**„ð%øŸ„μ„Ä□Ý’è„ðfZ□[fu„μ„Û„·□B•İ□X„μ„½“à—e„í„·„®„É”½%of„μ„Û„·□B

MIDI|□[fg„ªŽg—p%øÂ“\„È□ó’Ô„©„Ç„x„©„ð’m„é„É„í□AÒ²Ý³“ÝÄb³%øª•û„ì□**ó<μ•\**  
**Ž!•”**„ì**PORT**„ì□€—Ú„ðCE©„ê„î•ª„©„è„Û„·□B

# ,·,Á,É,í,©,Á,Ä,ç,éfofo

TMIDI,É,í,ç,,Á,©fofo,ª,è,Ü,·B

‘—,èiŠª,«-ß,μj,ð,·,é,Æ”½%ž,μ,È,ç

,±,é,í‘—,è,ð^êŠ±,μ,Ä^—,·,é,½,ß,Á,μ,î,ç,,·,é,Æ%’t,ªŠŽn,·,é,í,,Á,·B

”{‘—%’t,·,é,Æf}fEfX”™,ªCEø,©,È,,É,é

,±,é,ÍŠO·”%¹CE¹,ðŽg—p,μ,Ä,ç,éêê±,É<N,±,è,Ü,·B,W”{‘—^èª,É,È,é,ÆCPU,ðè—  
L,μ,Ä,μ,Ü,æ,æ,Á,·B  
,»,,ì,Ü,Ü%’t,ªI,í,é,Ü,Á’âŽ~f{f^f”,ð~A’Á,·,é,îŽ~,Ü,è,Ü,·B

TMIDI,ì%ot»fCfxf<f[]f^,ÆSC-88,ì%ot»,ì·\Ž!,ª±,í,È,ç

Š®’S,Éfvf~f...fCE[]fg,·,é,Æ,©,È,è,ìžèŠO,ª,©,©,é,ì,ÁA,±,é,îŽd—l,Æ,ç,æ,±,Æ,É,μ,Ä,-  
¾,¾,çB(“Á,É— f[]fg[]\$Eä,Æ,©)

32TRff[]f^,ª%’t,Á,«,È,ç

·W[]MIDIftf@fCf<,Á,ì32TR,ì[]\$Eä·û-@,í<KŠi,Á“Á,ÉCE^,Ü,Á,Ä,ç  
,Ü,¹,ñB,Á,·,ì,Á[]Aff[]f^,É,æ,Á,Á[]\$Eä·û-@,ª,Ü,ç,Ü,ç,Á,·BTMIDI,Á·,·,é,ì,îŽÿ,ì,æ,æ,  
È·ûŽ®,Á,·B

f[]f^fCfxf“fg,ðŽg—p  
ŠmŽÁ,É·,·,é,æ,æ,É,È,Á,Ä,ç,Ü,·B

1fgf%’bfN=Af[]fg[]A2fgf%’bfN[],af[]fg,ÆCE^,ß,æ,ç,μ,½ff[]f^  
TDFftf@fCf<,ð·O[]W,·,é,î·,·,Ü,·B

,Pfgf%’bfN,©,ç,P,Ufgf%’bfN=,`f[]fg[]A,PVfgf%’bfN^È~[],af|  
[]fg,ÆCE^,ß,æ,ç,μ,½ff[]f^  
TDFftf@fCf<,ð·O[]W,·,é,î·,·,Ü,·B

,»,,é^ÈŠO  
Žc”O,È,ª,ç,»,,ì,Ü,Ü,Á,í·,·,È,ç,ì,ÁŠeŽífç[]f<,ðŽg,Á,Äf[]f^fCfxf“fg,ð’Ç  
%’Á,μ,Ä,¾,¾,çB

RCPftf@fCf<,Á,íŠmŽÁ,É·,·,é,í,,Á,·B

WRD,ìf^fCf~f“fo,,é

TMIDI,Á,í,É,é,x,MIMPI,ìŽd—l,É,·,í,¹,½,Á,à,è,Á,·,ª,ç,æ,μ,Äf^fCf~f“fo,ª±,í,È,çêê±,ª,è  
,Ü,·B“Á,ÉŽÿ,ì,æ,æ,Èff[]f^,í,,é,Ü,·B

CEÄ,çfo[]fWf±”,ìMIMPI—p,ìWRD,ÁA@WAIT,ìfofo,ðŽg,Á,Ä,ç,é,à,ì

,P·¶žš·\Žif,[]fh,ðŽg—p,μ,Ä,ç,é,à,ìB

%ižŒ•\Ž!,Ā•ŕŽš,ª¼•ªŽc,é

,±,ê,í,»,\,α,ζ¼,μ,Û,·□B(^^;



# %%%'t,Å,«,éftf@fCf<Ě`Ž®,É,ÍŽŸ,ì,æ,ɣ,È,à,ì,ª, ,è,Û,·B

TMIDI,Å%%%'t,Å,«,éftf@fCf<Ě`Ž®,É,ÍŽŸ,ì,æ,ɣ,È,à,ì,ª, ,è,Û,·B

MID •W€MIDIftfH[f]fbfg  
SMF “`ã  
RMI “`ã  
MFF “`ã  
RCP fĚfRf“f[fUver 2.5F^È`O  
R36 “`ã

,È,Ç,ª, ,è,Û,·B

,Û,½ALZHftf@fCf<“à,ìMIDIftf@fCf<,đ'¼Ú•.,±,Æ,ª,Å,«,Û,·B  
(UNLHA32.DLL,ª•K—v)

fĚfRf“f[fU,ìfef“f]fOf%off[fVf#f“,É,Íî%ž,μ,Ä,ç,Û,¹,ñB[i-³Ž<,μ,Û,·j

^È%º,íA<—^fTf|[fg—\`è,ìftf@fCf<Ě`Ž®,Å,·B  
G18 fĚfRf“f[fUver 2.5G^È~  
G36 “`ã

^È%º,íA^è%žfTf|[fg—\`è,È,ì,Å,·,ªAQAQA, ,Û,è,â,é<C,ª-³,ç(^ ^;  
SNG foj%|[fhAf~f...[fW~Y  
MM2 f}fCfNf~f...[fWfVfff“,Q

” { ‘ ¬ % º % º ‘ t

TMIDI, Å, Í 2, ©, ç, P, U” { ‘ ¬, Ü, Å f e f “ f j |, ð • Ì, |, é, ±, Æ, º, Å, «, Ü, · □ B  
f □ f C f “ f E f B f “ f h f E, ì % º º • ù, Ì □, ð % º ÿ, ·, Æ □ A 2 “ { □ A 4 “ { …, P, U “ {, Æ • ì % º » , μ, Ü, · □ B  
Æ³, É - ß, ·, É, Ì □, ð % º ÿ, μ, Ä, , ¾, ¾, ç □ B

, , Ü, è □, ·, ·, é, Æ CPU, ð “ Æ □ è, μ, Ä, μ, Ü, x % º Â “ \ □ «, º, , è, Ü, · □ B, » , ì □ è □ †, Í ‘ à Ž ~ f { f ^ f “, ð ~ A ‘ Ä, μ, Ä, -  
, ¾, ¾, ç □ B • K, , , Æ, Ü, é, Í, , , Å, · □ B (, ç, å, Á, Æ Ž © □ M, È, μ)

# 'I<È

fŠfXfg<@"\,à,μ,,ÍtfHf<f\_<@"\,ðŽg—p,·,éêê†,íA<ÈfŠfXfg,ì't,©,ç'I<È,μ,Ä%%'t,<sup>3</sup>,<sup>1</sup>,é,±,Æ,<sup>a</sup>,Ä,«,Ü,·B

## <ÈfŠfXfgfEfBf"fhfE,ð—~—p,μ,½•û-@

fjffj...[fo[[],ì't,ìList!,ð%ÿ,·,Æ[AfEfBf"fhfE,É<ÈfŠfXfg,<sup>a</sup>\Ž|,<sup>3</sup>,é,Ü,·B  
,»,ì't,ì<È-¼,ì•"<sup>a</sup>,ð%ÿ,·,Æ[A,»,ì<È,<sup>a</sup>%%'t,<sup>3</sup>,é,Ü,·B

## fL[f{[fh,ð—~—p,μ,½•û-@

fj[f\<fL[[],ð%ÿ,·,Æ'I<È,Ä,«,Ü,·B  
ver1.3,©,ç<sup>a</sup>«fL[[],í,â,ß,Ü,μ,½B(Document!,Æ,ìŠÖÆW,Ä)

fef"fL[[],ì,W[A,U ŽŸ,ì<È,É^Ú"®  
fef"fL[[],ì,Q[A,S 'O,ì<È,É^Ú"®

## f{f^f",ð—~—p,μ,½•û-@

◀,ð%ÿ,·,Æ[AŽŸ^'O,ì<È,É^Ú"®,μ,Ü,·B

‘□’—,è□^Š<sup>a</sup>-ß,μ

◁È†,ì”C^Ó,ìê□Š,É□užž,É^Ú”® ,Å,« ,Ü,·□B

,½,¾,μ□ACE»□Ý,ìê□Š,©,ç,³,©,ì,Ú,é□ê□†,í□A,ç,Á,½,ñ□æ“<sup>a</sup>,É-ß,Á,Ä-  
Ú”I,ìê□Š,É^Ú”® ,·,é,ì,ÅžžŠÔ,<sup>a</sup>,©,©,é□ê□†,<sup>a</sup>, ,è,Ü,·□B

fXfNf□□[f<fo□[.đ”® ,©,·,±,Æ,É,æ,è□Af}fEfX,ìf{f^f“ ,đ—**£,μ,½,Æ,«**,É^Ú”® ,μ,Ü,·□B

# ftfHf<f\_ 'l<È

, ,éftfHf<f\_É'¶Y,·,é<È,·,×,Ä,ðfŠfXfg,É,μ,ÄA%%'t,μ,Ü,·B

**ftf@fCf<f¶ffj...¶[,lftfHf<f\_ðŠJ,,ð'l,Ô,ÆAftfHf<f\_'ð%æ-Ê,É,È,è,Ü,·B**

'l<È,ìŽd•û,í,±,¿,ç,ðŽQÆ,μ,Ä,,¾,³,çB

# fŠfs [fg<@”\

%%%'t,đ|—<sup>1</sup>,<sub>1</sub>,,É AfGf“fhfĈfX,É<È,đ-Á,ç,:f,[fh,Å,·B<sup>2</sup>,đ%öÿ,:ÆfŠfs [fg<@”\,ìON/  
OFF,<sup>3</sup>Å,«,Ü,·B  
fŠXfg, ,é,ç,ítfHf<f 'l<È,đŽg—p,μ,Ä,ç,é,Æ,«,íA<È,<sup>3</sup>,,x,Ä•,«|,í,é,Æ^ê”ÔÅ%o,ì<È,ì-  
ß,è,Ü,·B  
MIDIftf@fCf<'P'ì,đ•,ç,Ä,ç,é,Æ,«,íA1<È,đfŠfs [fg,μ,Ü,·B

# fhf%ofbfOfAf“fhfhf[]bfv

TMIDI,Å,í[]AMIDIftf@fCf<,lfhf[]bfv,<sup>a</sup>,Å,«,Ü,·[]B  
ftfHf<f\_ ,ðfhf[]bfv,·,é,Æ[]A,»,lfHf<f\_ ,l't,ìMIDIftf@fCf<,·,x,Ä,ð'T[]ö,μ,ÄfŠfXfg,É'Ç  
%oÁ,μ,Ü,·[]B

fhf[]bfv,·,é,Æ,«,ÉfŠfXfgftf@fCf<,²fI[]fvf“,<sup>3</sup>,é,Ä,ç,é,Æ[]A,»,lfŠfXfg,ÖMIDIftf@fCf<,ð'Ç  
%oÁ,μ,Ü,·[]BŠî- {ftfHf<f\_ŠO,lfHf<f\_ ,lfHf[]bfv,<sup>3</sup>,é,½,Æ,«,lfGf%o[][,Æ,È,è,Ü,·[]B

# fL[f{[fh

TMIDI,Å,ÍfL[f{[fh,Å,à'€ì,Å,«,Ü,·BFullscreen!,ðŽg—p,·,é,Æ,«,É•Ö—~,Å,·B

<@”\	İşÝ,¼@Ý.°	fef“fL[	,»,ì¼
fŠfXfg,ðŠj,	F3		
fŠfXfg•ÒW	Shift+F3		
fwf<fv	F1		
WRDØ’Ö	F5	^	
DOCØ’Ö	F6	-	
fŠfXfgØ’Ö	F7		
—CE^%»	F8		
’S%æ-ÊØ’Ö	F9	{	
ŽŸ<È		,W,Æ,U	
’O<È		,S,Æ,Q	
’âŽ~			Enter
^êŽž’âŽ~		,T	



$f\{f^f\}$

# MIDI fV [fP f " fT, i Y' è

, ±, ĩf^fu, Å, íMIDI% % 't, ÉŠÖ, ·, éY'è, ð, µ, Ü, ·B

## MIDI f [fg

TMIDI, Å, í3, Å, ĩf [fg, ðŽw'è, Å, «, Ü, ·B [iE »fo [fW f f " , Å, í, » , ì, x, ç, ì2, Å, ðŽg—p [j

MIDI f [fg, ðŽg—p % Å " \, É, È, Á, ½, ©, Ç, x, ©, í % ° [ } , ì, æ, x, ÉŠm " F, Å, «, Ü, ·B



, ±, ì—á, Å, íAB, ì—¼f [fg, ðŽg—p % Å " \, Å, ·B

<N " ® Žž, É % ½, ç, ©, íE ' ^ ö, Åf [fg, ì % Šú % » , ÉŽ , " s, µ, Äf [fg, ðŽg—p • s " \ [ó Ó, É, È, Á, ½ [ê [±, í [A Shift + M f L [ , ð % Ÿ, ·, Æ [Äf [f v f " , µ, Ü, ·B

## Š, , èž, ÝŠÖŠu

TMIDI, Å, íf t [fU [ , ĩf [fY, É [±, í, 1, ÅŠ, , èž, ÝŠÖŠu, ð • ĩ, ĩ, é, ±, Æ, a, Å, «, Ü, ·B

Š, , èž, ÝŠÖŠu, í [A ' Z, , ·, é, Æ f Š f Y f € , a [Šm, É, È, è, Ü, ·, a [ACPU [è—L—ĩ, a [ , , - , È, è, Ü, ·B <t, É [A ' ·, , ·, é, Æ f Š f Y f € , a • s [Šm, É, È, è, Ü, ·B

NT " Å, ì [ê [±, íŠ, , èž, ÝŠÖŠu, ð ' Z, , ·, é, Æ % % ' t, a , à, ½, Á, Ä, µ, Ü, x [ê [±, a , è, Ü, ·B

## -³CEÀf [fv, ìCE, è • Ô, µ "

RCP, ì-³CEÀf [fv, ì % ñ " , ðŽw'è, µ, Ü, ·B

## midOutShortMsg(), ðŽg—p, ·, é

YAMAHA S-YG20, ÅŽg—p, ·, éŽž, â [ATMIDI, í [³ [í, É " ® , ç, Ä, ç, é, æ, x, ¾, a % ° 1, a - Å, ç, È, ç [ê [±, ÉCEÀ, èŽg—p, µ, Ä, , ¾, ¾, ç [B, Ü, ½ [A, ±, ĩf ĩv f v f f " , ð—LCEø, É, ·, é, Æ f [f b f Z [fW'— [MŽž, ĩf E f f C f g, a , ·, x, Ä-³CEø, É, È, è, Ü, ·B, ĩ, h, c, h " ] '—fCE [fg, ì'² [® , à-³CEø, É, È, è, Ü, ·B

## MIDI " ] '—fCE [fg, ì'² [®

TMIDI, Å, í [A f v f Š f A f < I / F, ÆESC-88, ì'g, Ý [±, í, 1, Å, µ, æ, x, µ, Ä, ç, é f t [fU [ , ì, ½, ß, É " ] '—fCE [fg, ì'² [® , ð, ·, é, ±, Æ, a, Å, «, Ü, ·B

'É [í Roland Serial MIDI I/F, ðŽg—p, ·, é [ê [± [A 38.4kbps, ÅSC88, Æ'É [M, µ, Ü, ·, a [A ' - , ·, - , ÅSC88, ĩf o f b f t f @ , a , Ó, é, Ä [³ [í, È % % ' t, a , Å, «, Ü, 1, ñ [B, » , ±, ÅTMIDI ' x, Å " ] '—fCE [fg, ð ^ Ó [ } " ĩ, É ' x, , ·, é, ±, Æ, É, æ, è [³ [í, È % % ' t, ð % Å " \, Æ, µ, Ä, ç, Ü, ·B, ±, ĩf ĩv f v f f " , ð f ` f f b f N, µ, ½ [ê [± " ] '—fCE [fg, í • ½ < ĩ 28kbps, , ç, ç , É, È, è, Ü, ·B, ½, ¾, µ [A f ` f f b f N, ·, é, Æ, à, ½, è, a ' ½ [ " [ [µ, µ, Ü, ·B , Ü, ½ [A [ « " \, ì ' á, ç MIDI I/F, ðŽg—p, µ, Ä, ç, é [ê [±, à, ±, ĩf ĩv f v f f " , ð f ` f f b f N, ·, é, Æ, b, o, t [è—L—ĩ, a ' á, È, è, Ü, ·B [i Sound Blaster 16, ìMIDI f [fg, í, ±, è, É, , ½, è, Ü, ·B

,±,ìfìfvfvf+f“ ,í“à‘ %o¹CE¹,Å,í,Ü,Á,½,^Ó-¡,ª, ,è,Ü,¹,ñ,ì,Åf`fFfbfN,μ,È,ç,Å,,¾,³,ç□B

# MIDI fGf~f...fCE [fVf#f" ,ìY'è

TMIDI,Á,ÍŽ©•ª,ìŠ—L,μ,Ä,ç,é%<sup>1</sup>CE<sup>1</sup>,Æ^á,æ%<sup>1</sup>CE<sup>1</sup>—pff [f^,ð•.,½,β,É AfGf~f...  
fCE [fVf#f" ,·,é,±,Æ,ª,Ä,«,Ü,·B  
,±,±,ÉY'è,·,éff [f^,Í AŽg—p,·,é%<sup>1</sup>CE<sup>1</sup>,ì@Ží,ðY'è,μ,Ü,·B Ú,μ,,ífGf~f...  
fCE [fVf#f" <@",É,Ä,ç,Ä,ðŽQ [Æ,μ,Ä,,¾,¾,¾,çB

## Žg—p%<sup>1</sup>CE<sup>1</sup>

Ž©•ª,ªŽg—p,μ,Ä,ç,é%<sup>1</sup>CE<sup>1</sup>,ðŽw'è,μ,Ü,·B  
fŠfXfg,É"ü,Á,Ä,ç,È,ç [é [†,Í^È%<sup>0</sup>,ðŽQ [l,É,μ,Ä,,¾,¾,¾,ç

KORGEnGM	<b>05R/W</b> ,ð'l'ð,μ,Ä,,¾,¾,¾,ç
GSCEÝŠ· [ifof "fN126,127, ,è [j	<b>SC-55</b> ,ð'l'ð
GSCEÝŠ· [ifof "fN126,127,È,μ [j	<b>SC-33</b> ,ð'l'ð
GM [€ <'	<b>GM</b> ,ð'l'ð
XGCEÝŠ·	<b>MU-80</b> ,ð'l'ð

Ž©•ª,ªŽg—p,μ,Ä,ç,é<@Ží,ª•ª,©,ç,È,ç [l,ÍGM,ð'l,ñ,Á, ",,ì,ª-³ "i,Á,·B

,ç,æ,μ,Ä,à^Ó [},·,é%<sup>0</sup>%<sup>0</sup>'t,É,È,ç,È,ç,Æ,«,ÍŽg—p  
%<sup>1</sup>CE<sup>1</sup>,ð**THRU**,É,·,é,©**TDFftf@fCfç**,ð•Ò [W,μ,Ä<È,<sup>2</sup>,Æ,É**THRU**,É,μ,Ä,,¾,¾,¾,çB

# fEfBf“fhfE□Ý'è

TMIDI,ìŠOŠì,đ□Ý'è,μ,Ü,·□B

## •ÊfEfBf“fhfE□Ý'è

f`fFfbfN,³,è,½fEfBf“fhfE,í□ATMIDI,ìf□fCf“fEfBf“fhfE,Æ,Í•Ê,ìfEfBf“fhfE,É•\Žì,³,è,Ü,·□B

## fhf□fbfv,μ,½,ç%o%o'tŠjŽn

,±,ìfìfvfVf+f“,đf`fFfbfN,·,é,ÆMIDIftf@fCf<,đfhf□fbfv,·,é,ÆŽ©“®“ì,É%o  
%o'tŠjŽn,μ,Ü,·□B

## fhfLf...f□f“fgfEfBf“fhfE

fhfLf...f□f“fgfEfBf“fhfE,É•\Žì,³,è,éftfHf“fg,đ•ì,ì,é,±,Æ,ª,À,«,Ü,·□B

## fŠfXfgfEfBf“fhfE

fŠfXfgfEfBf“fhfE,É•\Žì,³,è,éftfHf“fg,đ•ì,ì,é,±,Æ,ª,À,«,Ü,·□B  
"ftf@fCf<-¼•\Žì",đf`fFfbfN,·,é,ÆfŠfXfgfEfBf“fhfE“à,Éftf@fCf<-¼,ª•\Žì,³,è,Ü,·□B

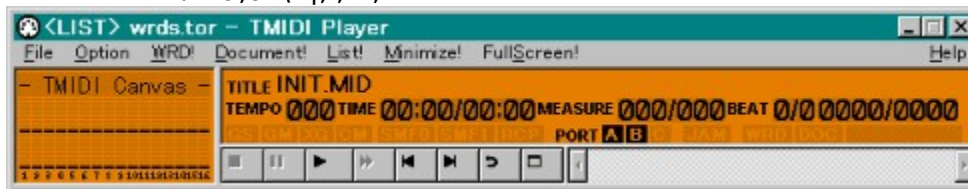
## □-CE^%o»Žž,ì“®□ì

□í,ÉŽè'O,đ—LCEø,É,·,é,Æ□-CE^%o»Žž,É,í□í,ÉŽè'O,É•\Žì,³,è,Ü,·□B

□-CE^%o»f{f^f“,đ%oŸ,μ,½,Æ,«,ì“®□ì,đ'è<,μ,Ü,·□B

□-CE^%o»f{f^f“,đ%oŸ,·,ÆŽŸ,ì,æ,ɣ,É,È,è,Ü,·□B

—¼•û,đ•\Žì,ì,Æ,«



## □ó<μ•\Žì□f{f^f“,ì,Ÿ



# %ižĀ•\Ž!Ų'è

WRD%ižĀ•\Ž!,ì"®Ų,đŲ'è,μ,Û,ŲB

## %ižĀ•\Ž!—pftfHf"fg

%ižĀ•\Ž!,,é,½,β,łftfHf"fg,đŲ'è,μ,Û,ŲB,±  
,łfšfXfg,É,ÍĀ'è•ŲftfHf"fg,μ,©fšfXfg,<sup>3</sup>,é,Û,<sup>1</sup>,ňŲB"ú—{ĀêftfHf"fg^ÈŠO,đ'Í,Ô,Ā"ú—  
{Āê,ł•\Ž!,<sup>º</sup>»,,Û,ŲB

## Ų,'¬•\Ž!

WRD•\Ž!,đŲ,'¬%»,,μ,Û,ŲB,±,łfłvfVfłf",đf`fFbfN,·,é,ĀCPU,<sup>º</sup>  
%É,É,È,Ā,½,Ā,«,É^é"x,É•` ,©,é,Û,ŲB  
16bpp(HI-Color)f,Ų[fhŽž,É%ižĀ•\Ž!,<sup>º</sup>Ç,ç,Ā,©,È,çĀêŲ,É,ì,Ų—LĀø,Ā,ŲB  
,È,é,x,Ų,'¬•\Ž!,đ-<sup>3</sup>Āø,É,·,é,ì,đŲ,,Ųš,μ,Û,ŲB

## Ž©"®"Í,ÉWRDfEfBf"fhfE,ÖŲø,è'Ö,!,é

,±,łfłvfVfłf",đf`fFbfN,·,é,ĀĀfšfXfgfEfBf"fhfE•\  
Ž!Žž,ÉĀŲŲšŽn,·,é,ĀĀWRD,<sup>º</sup>ŲŲŲ,·,éŽž,ÉĀĀ,èWRDfEfBf"fhfE,ÖŲø,è'Ö,!,Û,ŲB

## 'S%æ-Ê•\Ž!(DirectDrawŲ'è)

'S%æ-Ê•\Ž!Žž,ìDirectDraw,ìŲ'è,đ•Ī,!,Û,ŲB  
,È,é,x,Ų,,Ųš,<sup>3</sup>,é,Ā,ç,é"ŲŲ",đ•ĪX,μ,È,ç",đŽg,Ā,Ā,<sup>3</sup>/<sub>4</sub>,<sup>3</sup>,çŲB  
^Ų-ì,!,<sup>º</sup>,©,ç,È,çŲ,Í,ç,Ų,ç,È,ç•û,<sup>º</sup>Ā«-<sup>3</sup>/<sub>4</sub>,Ā,ŲB

**%ot»•\Ž!Ÿ'è**

%ot»•\Ž!•”•ā,|ŠOŠĩ^“®ì,đŸ'è,μ,Û,·B

**%ot»fjbfNf%ofCfj**

%ot»•\Ž!•”,ìF,đ•ĩX,μ,Û,·B

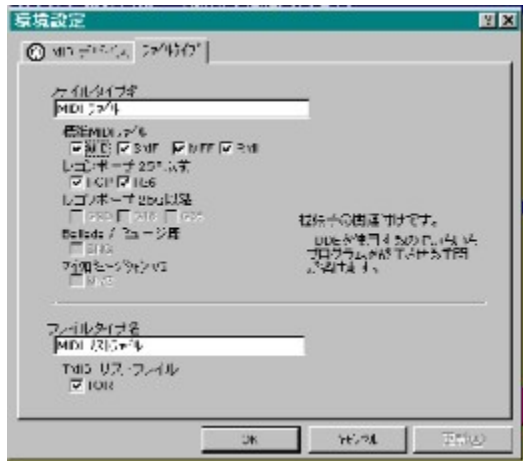
# ftf@fCf<f^fCfv□Ý'è(ŠÖ~A•t,~)

TMIDI,Å,ÍDDE,ðŽg—p,μ,ÄfGfNfXfvf□□[f%o,©,çÆÄ,Ñ□o,·,±,Æ,ª,Å,«,Ü,·□B,Ü,½,±,ì<@”\  
,ÍMIDIf tf@fCf<,LISTtf@fCf<,WRDtf@fCf<,ªŽg—p,Å,«,Ü,·□B



,±,ì,æ,α,É□ASetting,ðfNfŠfbfN,μ,Ä,,¾,¾,ç□B

ftf@fCf<f^fCfv,ðfNfŠfbfN,·,éŽÿ,ì,æ,α,Èf\_fCfA f□fO,ª□o,Ü,·□B



•K—v,È□€-Ú,ðf`fffbfN,μ,ÄOK,ð%oÿ,·,Æ□A fGfNfXfvf□□[f%o  
,Åtf@fCf<,ðf\_fuf<fNfŠfbfN,·,é,¾,¾,~,ÅÆÄ,Ñ□o,·,±,Æ,ª,Å,«,Ü,·□B

,v,q,cftf@fCf<,àŠÖ~A•t,~,é,±,Æ,ª,Å,«,Ü,·□B,±  
,ì□è□#□A<Èf□[f^,íRCP,R36,MID,SMF,RMI,MFF,ì□#,ÉÆÿ□ð,μ,Ü,·□B



# fŠfXfg<@”\,É,Â,ç,Ä

fŠfXfg<@”\,Æ,ÍAMIDlftf@fCf<(È),ð“o~^,μA,»,)“o~^,μ,½<È‡,É,μ,½,ª,Á,Ä%%‘t,μ,Ä,ç,-  
<@”\,Ä,·B

fŠfXfg<@”\,ðŽg—p,·,é,É,ÍA[File]-[New  
list]iifŠfXfgftf@fCf<,i)i—i,ð‘l,ñ,ÅA“o~^,μ,½,çMIDlftf@fCf<,l“ü,Á,½ftfHf<f\_,ìfgfbfv^i^  
e”Öãj,ÉfŠfXfgftf@fCf<,ði—,μ,Ü,·B)i—,·,é,ÆA’¼,¿,É•ÖW%œ=  
Ë,É^Ú,è,Ü,·,ì,ÅA•,«,½,çftf@fCf<,ð‡”Ö,É“o~^,μ,Ä,,¾,¾,çB

fŠfXfgftf@fCf<,ÍŠi- {ftfHf<f\_,Æ,ç,πl,|•û,ðŽg—p,μ,Ü,·B  
Ši- {ftfHf<f\_,ìfŠfXfgftf@fCf<,ª‘ŋY,·,éftfHf<f\_,Æ,É,è,Ü,·B  
ftf@fCf<,ð’Ç%Á,·,é,Æ,«,ì•K, Ši- {ftfHf<f\_ %º,ìftf@fCf<,Ä, ,é•K—v,ª, ,è,Ü,·B

fŠfXfgftf@fCf<,É,ÍŠi-  
{ftfHf<f\_,©,ç,ì‘Š‘lfpfX,ªfZ[fu,³,è,é,ì,ÅAftfHf<f\_²,ÆfRfs[l,μ,Ä,àfŠfXfgftf@fCf<,É%e<¿,í, ,è,  
Ü,¹,ñB

ŠÖ~A•t,\_,·,é,Æ,“x,É(,±,¿,ç,ðŽQ(Æ)Žg—p,ð,·,é,±,Æ,ª,Ä,«,Ü,·B

**fŠXfgftf@fCf<,ìììì**

**File** f f j f ... [ , ì **New list**, ð f N f Š f b f N , · , é , Æ [ A f Š X f g f t f @ f C f < , ì ì ì ì , º , Å , « , Ü , · [ B

ì ì ì ì , º , é , é , Æ ' ¼ , ÿ , É fŠXfgftf@fCf<,ì•Ò [ W , É ^ Ú , è , Ü , · [ B

# fŠfXfgftf@fCf<,đŠJ,

File f f f f ... [ , ] Open List, đ f N f Š f b f N , · , é , Æ [ A f Š f X f g f t f @ f C f < , đ Š J , , ± , Æ , ª , Å , « , Ü , · [ B , Ü , ½ [ A T O R f t f @ f C f < , đ Š Ö ~ A • t , ¯ , Å , ¨ , ¯ , ĩ f \_ f u f < f N f Š f b f N , · , é , ¾ , ¯ , Å M I D I , đ < N “ ® , μ , Ä T O R f t f @ f C f < , đ Š J , , ± , Æ , ª , Å , « , Ü , · [ B ( f t f @ f C f < f ^ f C f v , đ Ž Q [ Æ )

Š J , ¢ , ½ Ć Ě ä , í % º º º º ‘ t , º , º , é , ± , Æ , ª , Å , « , Ü , · [ B

# fŠfXfgftf@fCf<,ì•Ò□W

Filef□fjf...□[,ìEdit List,đfNfŠfbfN,·,é,Æ□AfŠfXfg,ì•Ò□W,ª,Å,«,Ü,·□B

fNfŠfbfN,·,é,Æ'â,«,çf\_fCfAf□fO,ª•Žì,³,ê,Ü,·□B

<< 'Ç%oÁ

□¶,ìfyfCf“,ìŽw'è,μ,½ftf@fCf<,©,ç

%oE,ìfyfCf“□i<È□#□],ì--"ö,É^Ú"®,μ,Ü,·□BftfHf<f\_,đŽwŽì,μ,½□ê□#,í,»,ìftfHf<f\_,ì†,ÉŠÜ,Ü,ê,Ä,ç,é(fTfufffBfCfNfgfŠ,à)<È'S•",đ'Ç%oÁ,μ,Ü,·□B

<< 'Ÿ“ü

Šì-{"ì,É'Ç%oÁ,Æ“-,¶,Å,·,ª□A□¶'¶,ì<È□#fyfCf“,ìŽwŽì,³,ê,½,Æ,±,ë,©,ç'Ÿ“ü,³,ê,é,Æ,ç,¶“\_ª^á,ç,Ü,·□B

□ä,ö(%oº,ö)

□¶'¶,ì<È□#fyfCf“,ì†,Å□AŽwŽì,μ,½<È,đ□ä(%oº),Ö1,Ä,·,ç,μ,Ü,·□B

□í□œ

□¶'¶,ì<È□#fyfCf“,ì†,Å□AŽwŽì,μ,½<È,đ<È□#fŠfXfg,©,ç,í,·,μ,Ü,·□B

'S□í□œ

□¶'¶,ì<È□#fyfCf“,ì†,ì'S<È,đ,í,·,μ,Ü,·□B

CE»□Ý,ìftfHf<f\_

,±,ì□€-Ü,ÄŽì,³,ê,é^Ê'u,í□AfŠfXfgftf@fCf<,ì'¶□Ý,·,éftfHf<f\_,đf<□[fg,Æ,μ,½Žž,ì^Ê'u,Å,·□B

,Ü,½□A%oE'¶,ìfyfCf“,Å□A[Name],ì,æ,¶,É[ ],Å^í,Ü,ê,Ä,ç,é,ì,ìftfHf<f\_-

¼,Å,·□Bf\_fuf<fNfŠfbfN,·,é,Æ,»,ìftfHf<f\_,ì†,É“ü,ê,Ü,·□B

# fŠfXfgftf@fCf<,ì□\`¢ (\*.torftf@fCf<)

TMIDI,ìfŠfXfgftf@fCf<,ìŠg'£Žq,ÍTOR,Å,·□B

□Å□%□,ì□s,É,Í "#! /usr/local/bin/tmidi" ,ª, ,è,Ü,·□BCE»□Ý,ìfo□[fWf#f" ,Å,Í"Á,Éf`fFfbfN,ð,µ,Ä,¢  
,Ü,¹,ñ,ª□AZ©•ª,Å□ì,é□ê□‡,Í`#!' ,Æ`tmidi' ,¾,³,̄,Í•K, ,“ü,ê,Ä,-  
,¾,³,¢□B(UNIX,ìfvfFf<fXfNfŠfvg,ì□^Ž—,Å,·(^^;)

ŽŸ,ì□s,©,ç,Í<Èff□[f^ ,ð—...—ñ,µ,Ü,·□B,P□s,É,P,Â,ìff□[f^ ,ª, ,è□A,P<È,ÍŽŸ,ì,æ,æ,Èff□[f^ ,Å□  
□—,³,ê,Ü,·□B

ftf@fCf<,ì^Ê'u□iŠî-{ftfHf<f\_ ,©,ç,ì'S'ìfpfX□j  
'è-¼  
<È,ì',³ (•b'P^Ê)  
□—□β□"  
□I—¹f}□[fN,ì '@'

□ÅCEã,ì□I—¹f}□[fN,Í•K, ,•K—v,Å,·□B,±,ìf}□[fN,í□A□«—^ff□[f^□" ,ª'□,!,½,Æ,« ,ì,½,β,É, ,è,Ü,·  
□B,P<È,ìff□[f^ ,ð<æ□Ø,é,ì,É•K, ,f`fFfbfN,µ,Ä, ,¾,³,¢□B  
□—□β□" ,Æ<È,ì',³,Í,O,Å,à□\,¢,Ü,¹,ñ□B,O,ì□ê□‡,ÍTMIDI,ª%  
%o't,·,é,Æ,« ,ÉMIDIff□[f^ ,©,çŽæ,è□o,µ,Ü,·□B

# %òìŽĀftf@fCf<,É,Â,č,Ä

TMIDI,Á,ÍMIMPI ver.4‘Š“-,ì%òìŽĀftf@fCf<(Šg‘£Žq,ÍWRD),đ•\Ž!,.,é,±  
,Æ,ª,Á,«,Ü,·B,Ü,½AVer.1.3,©,ç%ò%òoCENf[]j,ì^ê•"fRf}f"fh,É‘Í%ž,μ,Ü,μ,½B

frrfff[,[]fh,ªHighColor(16frfbfg),Á,àAfpfĀfbfgfAfjff[][fVf#f“ ,ª,Á,«,é,æ,ꝛ,ÉĀ“K%»»,ª,ê,Ä,č  
,Ü,·B

**WRD!**f[]ffj...[][,đ%ÿ,.,Æ%òìŽĀ,ª•\Ž!,ª,ê,Ü,·B%òìŽĀftf@fCf<,ª-  
ª,č[]ê[]#,ÍDEFAULT.WRD[]i,±,¿,ç,đŽQ[]j,đ•\Ž!,μ,Ü,·B

# MIMPI,Æ,ì^á,ç

TMIDI,Á,ÍWindows[]ã,ÅŽÀÆ»•s%oÅ"\,È,à,ì,ð[]œ,ç,Ä[]A,"",æ,»MIMPI  
ver4.23,Æ,ìÆÝŠ·[]«,<sup>a</sup>,è,Ü,·[]B

Æ»[]Ý,ìfo[][fWf]f",Á,í^È%o°,ì,æ,α,È-½—β,ðfTf|[][fg,μ,Ä,ç,Ü,·[]B

## -½—β

@STARTUP(version)  
@WMODE(n<,mode>)  
@WAIT(bar <,step>)  
@OFFSET(nnn)  
@REST(bar <,step>)  
@INKEY(bar)  
@END()  
@LOCATE(y;x)  
@LOCATE(x,y)  
,<sup>a</sup>¶[]Ý,·,é,ì,ÅfTf|[][fg,μ,Ü,μ,½[]B)  
@TON(sw)  
,ÍÆã[]q  
@ESC(str)  
@COLOR(c)  
%ož  
@TCLS(x1,y1,x2,y2,color.char)  
@SCROLL(x1,y1,x2,y2,mode,color,char)  
@GINIT()  
@GCLS(sw)  
@GSCREEN(act,dsp)  
@GON(sw)  
@GLINE(x1,y1,x2,y2,p1,sw,p2)  
@GCIRCLE(x,y,r,p1,sw,p2)  
@PLOAD(filename)  
@PAL(<#n,>rgb1,....rgb16)  
@PALREV(p)  
@FADE(p1,p2<,speed>)  
@GMODE(sw)  
@GMOVE(x1,y1,x2,y2,xd,yd<,vs><,vd><,sw>  
@MAG(filename,x,y,s,p)  
@MIDI(d1...dn)  
@EXEC(filename)  
@PATH(\*)  
@PATH(@)  
@PATH()  
@PATH(str)  
@LOOP(count)  
@STOP()

## MIMPI,Æ,ì^á,ç

,È,μ  
,È,μ  
,È,μ  
,È,μ  
,È,μ  
@WAIT,Æ"·,¶,É%oðŽβ,<sup>3</sup>,è,Ü,·[]B  
,È,μ  
,È,μ  
,È,μ(MIMPI,ì[]à-¾[]',É,í[]Ú,Á,Ä,ç,È,ç  
sw=2,ì,Æ,«,ì"®[]ì,<sup>a</sup>^á,ç,Ü,·[]B[]Ú,μ,-  
,Ü,Æ,ñ,Ç,ìfGfXfP[][fvfV[][fPf"fx,É'í%ož  
'®[]«,ìfŠfo[][fX,ÆfAf"f\_[][f%ofCf",ì,Ý'í  
,È,μ  
,È,μ  
-<sup>3</sup>Ž<,μ,Ü,·  
,È,μ  
,È,μ  
,È,μ  
f%ofCf"fxf^fCf<,ì[]Ý'è,<sup>a</sup>,Á,«,Ü,<sup>1</sup>,ñ  
,È,μ  
,È,μ  
,È,μ  
,È,μ  
,È,μ (f^fCf~f"fO,<sup>a</sup>ŽáŠ±^á,α,©,à)  
,È,μ  
,È,μ  
-<sup>3</sup>Ž<,<sup>3</sup>,è,Ü,·[]B  
WRDCMD2,É'í%ož  
-<sup>3</sup>Ž<,<sup>3</sup>,è,Ü,·[]B  
[]í,É,±,ì[]ó'Ö,Ä,·[]B  
-<sup>3</sup>Ž<,<sup>3</sup>,è,Ü,·[]B  
-<sup>3</sup>Ž<,<sup>3</sup>,è,Ü,·[]B  
-<sup>3</sup>Ž<,<sup>3</sup>,è,Ü,·[]B  
-<sup>3</sup>Ž<,<sup>3</sup>,è,Ü,·[]B

## WRDCMD2,ìfRf}f"fh

^FONTM(p)  
^VCOPY(x1,y1,x2,y2,xd,yd,vs,vd,sw)

## WRDCMD2,Æ,ì^á,ç

,È,μ  
,È,μ

^VSGET(p)  
,»,'¼

,É,µ  
-³Ž<,³,ê,Ü,·B

**MIMPI,É,Í'¶Y,µ,É,çfRf}f"fh**  
@DTITLE(y,x1,x2)

fefLfXfg%œ-É,É<È-¼,ð•\Ž|,µ,Ü,·B

**@TON,É,Â,ç,Ä**

TMIDI,Â,ÍA@TON-½-ß,ðfTf|f|fg,µ,Ä,ç,Ü,·,ªAMIMPI,Æ"®|,ª^Ü,È,è,Ü,·B

98,lfefLfXfg•\Ž|,Í40CE...,Æ80CE...,Â%œ-É'S'Í,ªØ'Ö,Æ,È,è,Ü,·,ªATMIDI,Â,Í%œ-É'S'Í,ªØ,è'Ö,í,ç,·,É,»,'½-ß^È~,'¶Žš,¾,¯Ø,è'Ö,í,è,Ü,·B

<-á>

WRDftf@fCf<"à: @TON(1);  
,W,OCE...,Â,·B;  
@TON(2);  
,S ,O CE... ,Â ,· B ;  
@TON(1);  
,W,OCE...,É-ß,è,Ü,µ,½B;

%œ-Éã,lfCf|fW -----

NIFTY-Serve,lfMIDIDATftfH|f%of€,Â,ÍA,±,ì<Zp,ð%ž-p,µ,½<È,ª¶Y,µ,Ä,ç,Ü,·,ì,ÂA,±,ì<@"\,ð,Â,¯,Ü,µ,½B



# WRDfRf}f“fhfŠftf@fÆf“fX

## @STARTUP(version)

,±,ì-½-β^È□~,,ì•¶,ð%‰%t,ìŽn,Ü,é’O,ÉŽÀ□s,μ,Ü,·□B  
;(fZf~fRf□f“),Á,Â,Ë,°,é,±,Æ,à,Á,«,Ü,·□B  
version,É,ÍMIMPI,ìfo□[fWf†f“,ð<L□q,μ,Ü,·□B,S□D,O,¾,Á,½,ç,S,O,O,Æ,μ,Ü,·□B

## @WMODE(n<,mode>)

WRDfRf}f“fh,ì1□s,ðŽÀ□s,,éf^fCf~f“fO,ð□Y’è,μ,Ü,·□B  
n,É,ì1□-□β,ð,X,U,Æ,μ,½fefBfbfN□”□1,ðŽw’è,μ,Ü,·□B  
MIMPI,Æ^á,ç’-,çf^fCf~f“fO,É,μ,Á,à□³Šm,ÉfjfEf“fg,μ,Ü,·□B

mode=1,É,·,é,Æ□A1□s’P^Ê,Á,È,-

•¶Žš’P^Ê,Áf^fCf~f“fO,ðÆ^,β,ç,ê,Ü,·□B□iffftfHf<fg,Ímode=0□j

,±,ìf,□[fh,É,·,é,Æ`|`|`|`|`|,Í“Á•Ê,È^Ó-

ì,ðŽ□,ç,Ü,·□B’|,Í,Ž,ÁÆ^,β,½f^fCf~f“fO,ð’Ò,ç,Ü,·□B’|,Á^í,ñ,¾•¶Žš,Í1%ñ,ìf^fCf~f“fO,Á

•Žì,·,é,±,Æ,ð^Ó-ì,μ,Ü,·□B’|,Í|’|,â’\_’|,â’\’,ð•Žì|,·,é,½,β,ÉŽg,ç,Ü,·□B

<-á>

\_!\_| Love|\_| You.|\_

## @WAIT(measure<,step>)

measure,ÁŽw’è,μ,½□-□β,Ü,Á’Ò,ç,Ü,·□B@OFFSET,ðŽw’è,³,é,Ä,ç,é□”’l,ð%‰Á,ì,Ü,·□B  
step,Ímeasure,ÁŽw’è,μ,½□-□β,©,çstepfefBfbfN□i4•‰‰¹•,,ì•‰‰ð”\

,Í,S,W□j•ª,¾,´’Ò,ç,Ü,·□B

<-á>

@WAIT(54,144) ,S□^,S,ì<È,ì□ê□#□A54□-□β-Ú,ì3”□-Ú,Ü,Á’Ò,ç,Ü,·□B

## @OFFSET(n)

@WAIT(),ÁŽw’è,·,é□”’l,ð•â³,μ,Ü,·□B

## @REST(measure<,step>)

measure□-□β,ìstepfefBfbfN,¾,´’Ò,ç,Ü,·□B  
MIMPI,Æ”ñÆYŠ·,È,ì,ÁŽg,í,È,ç,Á,,¾,¾,ç□B

## @INKEY(measure)

@WAIT(),Æ””,¶,Á,·□B

## @END()

<È,ì%‰‰t,ª□l-¹,·,é,Ü,Á’Ò,ç,Ü,·□B

TMIDI,ì□ê□#,ì<È,ì%‰‰t,ª□l-¹,·,é,ÆWRD,à’âŽ~,μ,Ü,·,ì,Á□AŽÀŽì□ã,±,ì-½-β,Í^Ó-ì,ª, ,  
è,Ü,¹,ñ□B

## @LOCATE(y;x) ,Ü,½,Í @LOCATE(x,y)

fefLfxfg‰‰æ-Ê,ìfj□[f†f<^Ê’u,ð•ì□X,μ,Ü,·□B

(1;1),ªfz□[f†fWfVf†f“,Á,·□B

(x,y)Æ`Ž@,ÍMIMPI,ìfhfLf...f□f“fg,É,Í<L□q,μ,Á,È,ç,ì,Á,·,ª□A,»,ì,æ,x,È

%òìŽÆftf@fCf<,ª¶□Y’,·,é,ì,ÁfTfì□[fg,μ,Ü,μ,½□B

**@TON(sw)**

fefLfXfg•\Ž!,ì§CEä,ð,μ,Û,·□B  
sw=0,ìŽž,í”ñ•\Ž!,Á,·□B  
sw=1,ìŽž,í•\Ž!□ó’Ô,Á80CE...f,□[fh,É,È,è,Û,·□B  
sw=2,ìŽž,í•\Ž!□ó’Ô,Á40CE...f,□[fh,É,È,è,Û,·□B

**@ESC(str)**

ESC[,ðstr,ì’O,É,,Á,Â,¯,ÄfefLfXfg•\Ž!,μ,Û,·□B  
fGfXfP□[fvfV□[fPf“fX,ðŽg,α,Æ,«,É•Ö—~ ,Ä,·□B

**@COLOR(c)**

fefLfXfg•\Ž!,ì□F,ð•ï□X,μ,Û,·□B

**@TCLS(x1,y1,x2,y2,color,char)**

Žw’è,μ,½”í^í,ìfefLfXfg%œ-  
É,ð□Á<Ž,μ,Û,·□B□Á<Ž,·,é,Æ,«,íchar,ÁŽw’è,μ,½•¶Žš,Ácolor,ÁŽw’è,μ,½□F,Á□Á<Ž,μ,Û,·□B  
x1=1,y1=1,x2=80,y2=25,color=0,char=32,³ffftfHf<fg,Á,·□B  
,±,ì-½—β,ðŽÁ□s,μ,Ä,àfj□[f<^É’u,í•í□X,³,é,Û,¹,ñ□B

**@SCROLL(x1,y1,x2,y2,mode,color,char)**

Žw’è,μ,½”í^í,ìfefLfXfg%œ-É,ðfXfNf□□[f<,μ,Û,·□B  
mode=0,ì,Æ,«□A□ã,É1□sfXfNf□□[f<  
mode=1,ì,Æ,«□A%º,É1□sfXfNf□□[f<  
mode=2,ì,Æ,«□A%ºE,É1□sfXfNf□□[f<  
mode=3,ì,Æ,«□A¶¶,É1□sfXfNf□□[f<  
fXfNf□□[f<,μ,Ä, ,ç,½•”•ª,É,ícolor,Æchar,ÁŽw’è,μ,½•¶Žš,Á□Á<Ž,³,é,Û,·□B  
x1=1,y1=1,x2=80,y2=25,mode=0,color=0,char=32,³ffftfHf<fg,Á,·□B

**@GINIT()**

fOf%oftfBfbfN%œ-É,ì□%Šú%»»,ð,μ,Û,·□B  
fAfNfefBfufy□[fW,ÆffBfXfvfCEfCfy□[fW,ð,O,É,μ,Ä□A•\Ž!□ó’Ô,É,È,è,Û,·□B

**@GCLS(sw)**

fOf%oftfBfbfN%œ-É,ð□Á<Ž,μ,Û,·□B  
sw,É,ì□Á<Ž,·,éfvfCE□[f“,ðŽw’è,μ,Û,·□B4frfbfg,Á□A□ã^Êfrfbfg,©,çEGRB,ÆŽw’è,Á,«,Û,·□B  
B  
□È—ª,μ,½,Æ,«,â□A,O,ðŽw’è,·,é,Æ’SfvfCE□[f“,ð□Á<Ž,μ,Û,·□B

**@GSCREEN(active, display)**

•`%œfy□[fW(active),Æ•\Ž!fy□[fW(display),ð•ï□X,μ,Û,·□B

**@GON(sw)**

fOf%oftfBfbfN%œ-É,ì•\Ž!□§CEä,ð,μ,Û,·□B  
sw=0,Á”ñ•\Ž!□ó’Ô,Á□Asw=1,Á•\Ž!□ó’Ô,É,È,è,Û,·□B

**@GLINE(x1,y1,x2,y2,p1,sw,p2)**

□ú□^ŽI•ÓCE`,ð•`,«,Û,·□B  
sw=0,ì,Æ,«,í□A(x1,y1),©,ç(x2,y2),É¹¼□ü,ð•`,«,Û,·□B  
sw=1,ì,Æ,«,í□A(x1,y1),©,ç(x2,y2),ð’,“\_,Æ,μ,½,ÉŽI•ÓCE`,ð•`,«,Û,·□B  
sw=2,ì,Æ,«,í□A(x1,y1),©,ç(x2,y2),ð’,“\_,Æ,μ,½ŽI•ÓCE`,ð•`,«□A’t,ð“h,è,Á,Ô,μ,Û,·□B

p1, í·`%œ, ·, éF, đŽw'è, μ, Ü, ·B  
p2, É, í" h, è, Â, Ô, ·F, đŽw'è, μ, Ü, ·B sw=0, ÌŽž, í-³Ž, μ, Ü, ·B iMIMPI, Â, íf% Cf" fXf^ fCf<B

**@GCIRCLE(x,y,r,p1,sw,p2)**

'tSÀ·W(x,y)A"¼Ear, ì%~ , đ·`%œ, μ, Ü, ·B  
sw=0, Ì, Æ, «, íA%~  
sw=1, Ì, Æ, «, íA%~  
sw=2, Ì, Æ, «, íA%~ , đ·` , ç, ÄA't, đ" h, è, Â, Ô, μ, Ü, ·B  
p1, í·`%œ, ·, éF, ÂAp2, í" h, è, Â, Ô, ·F, Â, ·B

**@PLOAD(filename)**

PHOf@fCf<, đf[fh, μ, Ü, ·B

**@PAL(rgb1,rgb2,rgb3.....rgb16)**

#0, ÌpfEfBfg, đ·íX, μ, Ü, ·B  
#0, É, Ì, Â%œ-É, É, ·, ®"½%of, μ, Ü, ·B  
r, g, b, Ì, » , è, ¼, è0-F(, P, O, i, Â0-15), đŽw'è, Â, «, Ü, ·B  
<-á>

**@PAL(000,00F,0F0,0FF,F00,F0F,FF0,FFF,.....)**

**@PAL(#p,rgb1,rgb2,....rgb16)**

#pof" fN, ÌpfEfBfg, đ·íX, μ, Ü, ·B #0, Ì, Æ, «, Ì%œ-É, É, ·, ®"½%of, μ, Ü, ·B

#0, Ì%œ-É, ÉŽÀÜ, ÉŽg—p, ³, è, Ä, ç, épfEfBfg, áY'è, ³, è, Ü, ·B  
#1-#16, ÌŽ©—R, ÉŽg—p, Â, «, Ü, ·A  
#17, Ì @MAG, Ìtf@fCf<, ÌpfEfBfgí·ñ, áSi" [ , ³, è, Ü, ·B  
#18, Ì fAfNfefBfu%œ-É, á·\, Ì, Æ, «, Ì@MAGtf@fCf<, ÌpfEfBfg, Â, ·B  
#19, Ì fAfNfefBfu%œ-É, á— , Ì, Æ, «, Ì@MAGtf@fCf<, ÌpfEfBfg, Â, ·B

**@PALREV(p)**

#pof" fN, ÌpfEfBfg, đF"½", μ, Ü, ·B #0, ÌŽž, Ì%œ-É, É, ·, ®"½%of, μ, Ü, ·B

**@FADE(p1,p2<,speed>)**

#p1fof" fN, ©, ç#p2fof" fN, ÖpfEfBfg, đŠŠ, ç, ©, É·íX, μ, Ü, ·B  
speed, ÌŽw'è, μ, ½Xfs[fh, ÂpfEfBfg, đ·íX, μ, Ü, ·B 4·á%·¹·, , Ì·á%·đ"\  
, á, S, W, Æ, μ, ÄŽw'è, μ, Ü, ·B  
speed, ÌÉ—áŽž, Ì, Æ, «, Ì, P, Æ, È, è, Ü, ·B

**@GMODE(sw)**

í', «ž, Ý, ·, évfE[f", đŽw'è, μ, Ü, ·B 4frfbfg, ÂÄäfrfbfg, ©, çEGBR, ÆŽw'è, μ, Ü, ·B

**@GMOVE(x1,y1,x2,y2,xd,yd<,vs><,vd><,sw>)**

x1, y1, x2, y2, ÄŽw'è, μ, ½" í^í, Æ(xd, yd), ÄŽw'è, μ, ½Ä·W, ÉRfs[[]^ÉđŠ·, đ, μ, Ü, ·B  
vs, ÌRfs[[] , à, Æ, Ìfy[[]fW[]Avd, ÌRfs[[]æ, Ìfy[[]fW, đŽw'è, μ, Ü, ·B  
sw=0, ÄRfs[[]Asw=1, ÄÉđŠ·, Æ, È, è, Ü, ·B

**@MAG(filename,x,y,s,p)**

Woody-RINN, ³, ñ, ÌŠj", μ, ½, Ì, ` , fE` Ž®, Ì%œ'œftf@fCf<, đ·\Ž, μ, Ü, ·B  
(x,y), ÄŽw'è, μ, ½Ä·W, đ"¶ä, Ì' " \_ , Æ, μ, Ä·\Ž, μ, Ü, ·B  
s, Ìk—, Ì, ·B, ½, Æ, Ì, Ì, Q, đŽw'è, ·, é, Æc%o, ÌTfCY, á, P^ , Q, É, È, è, Ü, ·B

p=0, Ì, Æ, «A%œ'œ {fpfCEfbfg, ð“Ç, Ýž, Ý, Ü, ·B  
p=1, Ì, Æ, «A%œ'œ, Ì, Ý  
p=2, Ì, Æ, «AfpfCEfbfg, Ì, Ý, É, È, è, Ü, ·B

**^FONTM(p)**

BUCHI, ³, ñ, ŠJ”, μ, ½WRDCMD2(%o%oCENf[]fj), ÌfRf}f“fh, Å, ·B  
p=0, Ì, Æ, «AfvfXfef€- {—^, ÌftfHf“fg, ðŽg—pB  
p=1, Ì, Æ, «AZw'è, μ, ½ftfHf“fg, ðŽg—p

# fGfNfXfvf [f%o,É,æ,éfVf# [fgf]fbfg,ÆfŠfXfg

TMIDI,Å,í AfŠfXfgftf@fCf<(Šg'£ŽqTOR),đftf@fCf.f^fCfv,ÅÝ'è,.,é,Æ AfGfNfXfvf [f %oã,ÅfŠfXfgftf@fCf<,đf\_fuf<fNfŠfbfN,.,é,¾, -, Å AfŠfXfgftf@fCf<,ì%o%o't,ª%oÅ"\,É,È,è,Ü,·B

X,É""W,¾,¹,é,Æ AffXfNfgfbfv,ÉfVf# [fgf]fbfg,Æ,µ,Ä, ",ç,Ä'u,,± ,Æ,ª,Å,«,Ü,·B iTORftf@fCf<,É,í'Š'lfpfX,Å<Éftf@fCf<,ª"o~^,¾,è,Ä,ç ,é,ì,Å ATORftf@fCf<Ž©'l,đfRfs [ ,µ,É,ç,Å AfVf# [fgf]fbfg,đŽg,í,È, -,é,î,È,ç,È,ç,±,Æ,É' ^Ój

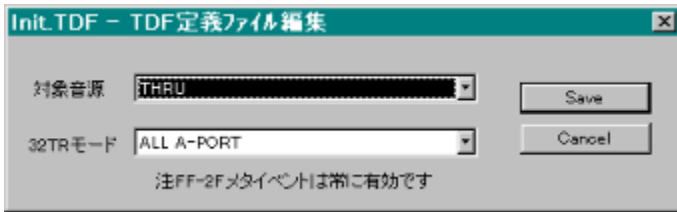
,Ü,½ AffXfNfgfbfvã,ÉftfHf<f\_,đi,Á,ÄA,»,ì't,ÉfVf# [fgf]fbfg,đ•i"i,é,Æ•Ö— ~,Å,µ,ã,æB i%oº,ì},đŽQij



# ‘íŮ%°¹Ĉ¹,đ<ſ“l,ÉŸ’è,-,é(TDFftf@fCf<,ìŸ’è)



f|fVfjf“fſjf...ſ[,ìTDF%°°‘tŸ’èftf@fCf<,ì•ŌW,đ‘l,Ō,ÆŽŸ,ì,æ,ŕ,Èf\_fCfAfſfO,ª•\ Žl,³,ê,Ū,ŰB



‘íŮ%°¹Ĉ¹,ſRf“f{f{fbfNfX,đ•ſX,μ,ÄSave,đ%Ÿ,·,Æ•ſX,³,ê,Ū,ŰB

‘íŮ%°¹Ĉ¹,É,ſAZ©•ª,ìŽg—p,μ,Ä,ç,é<@Ží,Ä,Í,È,ſA<Èffſf^,ª‘í%ž,μ,Ä,ç,é %°¹Ĉ¹,đŽw’è,μ,Ä,,³⁄₄,³,çſBŽ©•ª,ìŽg—p,μ,Ä,ç,é<@Ží,đŸ’è,-,é,É,ſGf~f... fĈſſfVfjf“f,ſſfh,É,Ä,ç,Ä,đŽQſl,μ,Ä,,³⁄₄,³,çſB

,±,±,ÄſSave,đ%Ÿ,·,Æ<Èffſf^,Æ“~,ſffBfĈfNfgfŠ,É“~,ſl- ¼‘O,ÄſAŠg’£Žq,ªTDF,ſftf@fCf<,ªſ,ç,ê,Ū,ŰB ,à,μTDFftf@fCf<,ª‘ſŸ,μ,È,ç<È,È,ç,ſAftf@fCf<-¼ſ^fhfLf...fſf“fgſ^‘è- ¼,đŽQſl,É,μ,ÄŽ©“@”»•É,μ,Ū,ŰB ,k,y,gftf@fCf<“à,ì,È,àſ³,μ,ſŸ’è,Ä,«,Ū,ŰB

%ižĀftf@fCf<,a-3,ϕ<È,ì,Æ,«

TMIDI,Å,íí,É%ižĀftf@fCf<,a•\Ži,3,ê,Ü,·B%ižĀftf@fCf<,a-3,ϕ<È,ìĕ#A%œ-  
Ê,a•,¾,ÆŽâ,μ,ϕ,ì,ÅATMIDI.EXE,Æ“”,ŋftfHf<f\_É, ,éDEFAULT.WRD,ÆDEFAULT.MAG,ðŽg  
—p,·,é,æ,α,É,È,Á,Ä,ϕ,Ü,·B

,±,ìDEFAULT.WRD,í•ĕ,ì%ižĀftf@fCf<,Æ“”,ŋ^μ,ϕ,ð,μ,Ü,·B

,±,ìDEAFULT.WRD,íft[fU,aŽ©—R,É•ïX,·,é,±,Æ,a,Å,«,Ü,·B,½,¾,μA<È,É,æ,Á,Äfef“f|  
,a^á,α,Æ,ϕ,α,±,Æ,ð“FŽ”,μ,Äì,Á,Ä,,¾,¾,ϕB

# fTf|[]lfg,μ,Ä,ç,éfhfLf...f[]f“fgftf@fCf<,ÆŠg'£Žq

TMIDI,Å,í[]A<È,ìfhfLf...f[]f“fgftf@fCf<,ð•\Ž|,·,é,±,Æ,ª,Å,«,Ü,·[]B•\Ž|,³,ê,éfhfLf...  
f[]f“fgftf@fCf<,í[]AŠg'£Žq,ªTXT,DOC,î¿,·,HED,ìftf@fCf<,Å,·[]B

%œ-Ê[]ã•û,ìf[]fj...[]fo[][,ì†**Document!**,ð%ÿ,·,Æ•\Ž|,³,ê,Ü,·[]B

Šg'£Žqî¿, HED TXT DOC,ìftf@fCf<,ª[]#”Ô,É•\Ž|,³,ê,Ü,·[]B

,u,...,’,P[]D,R,©,ç[]A,l,[]f,ìfefLfXfgftf@fCf<,ªCE©,ê,é,æ,ª,É,È,è,Ü,μ,½[]B



# File Explorer...

File Explorer... [É, ÍŽŸ, ì, æ, x, È<@“\, a, , è, Ü, ·]B

## Open a midi file

ŠeŽíMIDIftf@fCf<,đŠJ,«,Ü,·]B

## Open Folder

ftfHf<f\_,²,ÆŠJ,«,Ü,·]B,±,ı,ç,đŽQ]Æ

## Create list

fŠfXfg,đV,μ,ıııı,μ,Ü,·]B,±,ı,ç,đŽQ]Æ

## Open list

fŠfXfg,đŠJ,«,Ü,·]B,±,ı,ç,đŽQ]Æ

## Edit list

fŠfXfg,đ•Ò]W,μ,Ü,·]B,±,ı,ç,đŽQ]Æ

## Close list/file

fŠfXfgftf@fCf<,đ•Â,¶,Ü,·

## Explorer

Šî- {ftfHf<f\_,đf<]fg,É,μ,ÄfGfNfXfvf]f%o,đ<N“® ,μ,Ü,·]B

# Optionf fjf... [

Optionf fjf... [.,É,íŽŸ,ì,æ,ɣ,È<@\,ª, ,è,Ü,·B

Ÿ'è

ŠÂ<<Ÿ'è,ð,μ,Ü,·BMIDIfV[fPf“fTAMIDIfGf~f...  
fCE[fVftf“AfEfBf“fhfEŸ'èAftf@fCf<f^fCfv iSÖ~A•t, j,ìŸ'è,ª,Å,«,Ü,·  
B

TDF%%'tŸ'èftf@fCf<,ì•ÒW

TDFftf@fCf<,ì•ÒW,ð,μ,Ü,·B%%'t't,ì,Ÿ—LCEø,Å,·B,±,¿,ç,ðŽQÆ

fxf“f`f} [fN

fRf“fsf... [f^,ªTMIDI,ðŽÀ[s,·,é,ì,É,Ó,³,í,μ,ç,©,ð”»'f,μ,Ü,·BfrfffIfj [fh,ì“®  
%æ•\Z!(SetDIBitsToDevice),ì<<“\,ð'²,x,Ü,·B

# WRD Document List Minimize FullScreen{f^f“

'□□Fver1.4,©,ç,Íf{f^f“,É•İ□X,<sup>3</sup>,ê,Ü,μ,½□B

f{f^f“,ìWRD Doc List,ð%Ÿ,·,ÆfEfBf“fhfEŠOŠĪ,ª•İ%»»,μ,Ü,·□B

,»»,ê,¼,ê,ìf{f^f“,ì□à-¾

## WRD

%ò\ŽCE•\Ž!,μ,Ü,·□B□Ú,μ,,í%ò\ŽCE•\Ž!<@”\,ðŽQ□  
F5fL□[□^fef“fL□[,ì,V,ð%Ÿ,μ,Ä,à“~,¶CE<%ŸÉ,ª“¾,ç,ê,Ü,·□B

## Doc

fhfLf...f□f“fg,ð•\Ž!,μ,Ü,·□B□Ú,μ,,ífhfLf...f□f“fgftf@fCf<,ÆŠg'£Žq,ðŽQ□  
F6fL□[□^fef“fL□[,ì8,ð%Ÿ,μ,Ä,à“~,¶CE<%ŸÉ,ª“¾,ç,ê,Ü,·□B

## List

fŠfXfg,ð•\Ž!,μ,Ü,·□B□Ú,μ,,í\É,ðŽQ□  
F7fL□[□^fef“fL□[,ì□{,ð%Ÿ,μ,Ä,à“~,¶CE<%ŸÉ,ª“¾,ç,ê,Ü,·□B

## □-CE^%»

WRD/Document/List,ð•\Ž!,·,éEfBf“fhfE,ðí□œ,μ,Ä%ot□»\Ž!•”ª¾,~,ð•\  
Ž!,μ,Ü,·□B  
F8fL□[,ð%Ÿ,μ,Ä,à“~,¶CE<%ŸÉ,ª“¾,ç,ê,Ü,·□B

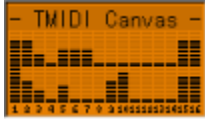
## FullScreen

'S%œ-Êf,□[fh,É,μ,Ü,·□B(DirectX,ª•K—v,Ä,·)

□□AAlt+ReturnfL□[□AF9fL□[□Afef“fL□[,ì,O,Ä,à□Ø,è'Ö,ì,ç,ê,Ü,·

'S%œ-Êf,□[fh,É,·,é,Æ^Ó□}“l,É^ê•”,ìfL□[,ª(,½,Æ,ì,îAlt+TAB,Æ,©Ctrl+ESC)-  
³CEø,É,È,è,Ü,·□B

%ot»•\Ž!



ã,É•\Ž!,³,ê,Ä,ç,é,ì,ª%ot»•\Ž!,Á,·BfCEfxf<f[]f^•\Ž!Žž,íAã"¼•ª,íB-port,ÁA  
%oº"¼•ª,íA-port,Á,·BA-port,©,çB-port,ð\$CEä,μ,Ä,ç,éêë,Ä,à, ,é'ö"x,í•\Ž!,³,ê,Ü,·B

Roland SC-55,©,ç"õ,í,Á,Ä,ç,é%ot»»,É,íAŽ©—R,ÈŠG,â•ŋŽš,ð•\Ž!,·,é,±,Æ,ª,Ä,«,Ü,·B,±  
,ê,Æ"˘,ŋ,æ,ª,ÉATMIDI,Á,íSC-55/88^ÈŠO,ì<@Ží,ð,"Ž,¿,ì•û,É,àCE©,ê,é,æ,ª,ÉA,±,ì<@"\  
,ðfTf|[]fg,μ,Ä,"èAfGfNfXfNf<[]fVfu,ìModelID=45h,ìDisplayed Letter,Displayed Dot  
Data,Display Page,Display Time,ÆAModelID=42h,ìPATCH NAME,É'í%ž,μ,Ä,ç,Ü,·B

# □ó<μ•\Ž!

TITLE テストの歌  
TEMPO 129 TIME 00:02:00:00 MEASURE 001/000 BEAT 2/4 0644/1920  
GS GM XG CM SMF0 SMF1 RCP PORT A B C JAM WRD DOC SC-88

□ă,É•\Ž!,<sup>3</sup>,ê,ç,é,ì,ª□ó<μ•\Ž!“•ª,Å,·□B

TITLE MID|ftf@fCf<,ì'è-¼,Å,·□B  
TEMPO **fef“fj**(BPM; Beat Per Minutes),Å,·□B  
TIME Ć»□Y%%'t,μ,Ä,ç,éŽžŠÔ,Å,·□B  
MEASURE Ć»□Y%%'t,μ,Ä,ç,é□-□B”Ô□t,Å,·□B  
BEAT Ć»□Y%%'t,μ,Ä,ç,é□-□B“à,ì”□□”,ÆfefBfbfN□”,Å,·□B  
GS **GS Reset**,ð'—□M,μ,½,±,Æ,ðŽ!,μ,Û,·□B  
GM **GM System ON**,ð'—□M,μ,½,±,Æ,ðŽ!,μ,Û,·□B  
XG **XG Reset?**,ð'—□M,μ,½,±,Æ,ðŽ!,μ,Û,·□B  
CM **CM PCM Reset**,ð'—□M,μ,½,±,Æ,ðŽ!,μ,Û,·□B  
SMF0 ff□[f^,ª**SMF Format 0**,Å, ,é,±,Æ,ðŽ!,μ,Û,·□B  
SMF1 ff□[f^,ª**SMF Format 1**,Å, ,é,±,Æ,ðŽ!,μ,Û,·□B  
RCP ff□[f^,ª**fçfRf“fj□[fU2.5F^È'O**,Å, ,é,±,Æ,ðŽ!,μ,Û,·□B  
A (prot) **Afj□[fg**,ªŽg—p%Å“\,É□ó'Ô,Å, ,é,±,Æ,ðŽ!,μ,Û,·□B  
B (port) **Bfj□[fg**,ªŽg—p%Å“\,É□ó'Ô,Å, ,é,±,Æ,ðŽ!,μ,Û,·□B  
C (port) **Cfj□[fg**,ªŽg—p%Å“\,É□ó'Ô,Å, ,é,±,Æ,ðŽ!,μ,Û,·□B  
JAM MID|ff□[f^,ì'—□M,ª**Ø,Å,Å,ç,é**,±,Æ,ðŽ!,μ,Û,·□B□i^ê“x,É'½,-  
,ìf□fbfZ□[fW,ð'—,ë,æ,Æ,·,é,Æ•\Ž!,<sup>3</sup>,ê,Û,·□B□j  
WRD %òìŽçftf@fCf<,ª'¶□Y,μ,Ä,ç,é,±,Æ,ðŽ!,μ,Û,·□B  
DOC **fhfLf...fj“fgftf@fCf<**,ª'¶□Y,μ,Ä,ç,é,±,Æ,ðŽ!,μ,Û,·□B  
SC-88 ,±,±,É,ì□A,»ìMID|ff□[f^,ì'ì□Û,Æ,·,é<@Ží-¼,ª•\Ž!,<sup>3</sup>,ê,Û,·□B  
Ž©“®”»•É,ìê□±□AŠú'Ò,·,é<@Ží-¼,Æ^á,æ•\Ž!,É,É,é,±,Æ,ª, ,é,ì,Å□A,»ìŽ  
ž,É,Í,±,ì,ç,ðŽQ□Æ,μ,Ä,,¾,¾,ç□B

# fLfffvfVf†f“

🎵 テストの歌 - TMIDI Player [PAUSE] [x2]

"fefXfg,ì%òì" ,±,ê,í%%%'t,μ,Ä,φ,é<È,ì-¼'O,đ^Ó-i,μ,Ü,·□B  
[PAUSE] ^êŽž'âž~†,Å, ,é,±,Æ,đŽ!,μ,Ü,·□B  
[x2] ☉»□Ý2"{'¬,Å, ,é,±,Æ,đŽ!,μ,Ü,·□B

fŠfXfgftf@fCf<,đfI□[fvf“,μ,Ä,φ,é,Æ,«,É,ÍŽŸ,ì,æ,ꝛ,É□o,Ü,·□B

🎵 <LIST> Girls.TOR - TMIDI Player [PLAY]

# fo [fWf]f —š—đ

## Version 1.1 [1996/11/26]

Initial version.

## Version 1.2 [1996/11/26]

DIB.DRV, Ì-³, çf}fVf“ , Å, à“ ® ì%oÅ“\, É, , é□B

## Version 1.3 [1997/1/7]

```
□m‘S”Ê□n
[File]-[Exit],ª“ ® ì, μ, È, ©, Á, ½fofO, ð□C□³□B
%ot□»fofbfNf%ofCfG, Ì□F, ð, QŽí—P‘I‘đ, É□A-¾, é, ³, ð%oÅ•İ, É, , é□B
fEfBf“fhfE, Ì‘à, «, ³, ð□¬, ³, , Å, «, é, æ, x, É, μ, ½(Minimize!)
fCEfRf“fì□[fU, Ìf□f, —“ , ðCE©, è, é, æ, x, É, μ, ½
DirectDraw, ðŽg, Á, Ä‘S%oæ-Êf, □[fh, ðŽg—p%oÅ“\, É, μ, ½(FullScreen!)
‘S%oæ-Êf, □[fh, É‘í%ož, , é, ½, ß, É%oæ-ÊffUfCf“ , ð‘½□•İ□X□B640x480, ÉŽù, ß, é, ½, ß□B
%oü^ «, Å, μ, ½( ^ ^ ;
ŽA□s—D□æfCEfxf<, ð•İ□X, Å, «, é, æ, x, É, μ, ½
, Ì, □, ffwfbf_ , Ì, Å, ç, ½fefLfXfgftf@fCf<, à•\Žì, Å, «, é, æ, x, É
• ; □“ , ÌfhfLf... f□f“fgftf@fCf<, ðCE©, è, é, æ, x, É, μ, ½□A
fEfBf“fhfE, ª”ñfAfNfefBfu, ÌŽž, Ì, b, o, t□è—L—ì, ð%oº, °, Ü, μ, ½□B
fhf%ofbfOfAf“fhfhf□fbfv, ÉŽb‘è‘í%ož

□mMIDI fV□[fPf“fT•“□n
fì□[fYŽž□AAII Sound Off□fbfZ□[fW, ðŽó□M, μ, È, ç MIDI f, fWf... □[f<, Ì, ½, ß, É□AAII Note
OFF, ÆOMNI OFF, à‘—, é, æ, x, É, , é□B
fGf%o□[f`fFfbfN<%o»
, Ì, h, c, h‘—□M•û-@, ð•İ□X□B“]‘—fCE□[fg, ð□$CEÀ, , é, æ, x, É, μ, ½□B(Roland Serial MIDI
Driver+SC-88‘í□ô)□B
2 Port‘í%ož, Ì•□, ðŠg‘à
TMIDI16.DLL, Ì^À‘è□«, ªCEü□ã, μ, Ü, μ, ½□B
RCPftf@fCf<, Ì• ; ŽG, Êf<□[fv, É‘í%ož, μ, Ü, μ, ½□B

□mWRD•\Žì•“□n
@COLOR(), Å-³CEø, Èfpf%of□□[f^, ðŽw‘è, μ, ½, Æ, «, Ì“ ® ì, ð•İ, Ì, é□B□i-³CEø, Ì, Æ, «, Ì“ , É, , é□j
%o%o□oCENf□fj, Ì‘è•“fRf}f“fh, É‘í%ož□B( ^ FONTM)
@COLOR(), ÄfnfCf%ofCfG(1), É‘í%ož
%oìŽCE•\Žì—p, ÌftfHf“fg, ð•İ□X%oÅ“\, É
fxf“f`f}□[fN<@“\□i, , Ü, , □j
fefLfXfg•\ŽìŽž, ÌfofOFix
DirectDraw, ÌWaitForVerticalBlank(), ðŽg—p, μ, ÄfpfCEfbfgf`fF“fWŽž, Ì□...
•½□üfmfCfY, ð□œ<Ž
fpfCEfbfg•İ□XŽž, Ì, ž, ç, Å, «, ðCEyCE
•\Žìf^fCf~f“fO, ð”²—{“Ì, É•İ□X, μ, Ü, μ, ½□B, ±, è, É, æ, Á, Ä□Af^fCf~f“fO, ª□±, x, æ, x
, É, É, Á, ½<É, Ì‘½, ç, Ì, Å, , ª□A<t, É□i, Ü, Å□±, Á, Å, ç, ½<É, ª□±, í, È, , É, Á, Å, ç, é%oÅ“\□« , ª , è, Ü, , □B
@MAG, Ì□k□¬—ì, É‘í%ož, μ, Ü, μ, ½□B
@MAG-½—ß, ÌfofO, ð‘¼, ,
‘S‘ì‘Ì, È□, ‘¬%o» (, Ü, ³, © 16bitDLLCEÄ, Ñ□o, μ, É, , ñ, ÈŽžŠÔ, ª, ©, ©, Á, Ä, ç, ½, Æ, Ì( ^ ^ ;)
```

ff[]f^,δ32bit“]—,·,é,±,Æ,É,æ,èfefLfXfg[]#[]—[]A—ì^æ“]—[]AfXfNf[][]f[]Q[]A[]...·½f%ofCf“·`  
%æ[]Af{fbfNfXftfBf<·`%æ[]AfT[]fNf<ftfBf<,l'—“xCEü[]ã []i“—ZĐ”ä—ñ,S”{ ^[]^[]

## Version 1.4 [1997/2/9]

WRDCMD2,ì ^VCOPY ^VSGET“™ %ø¼'zVRAM,É'í%øž  
Hi-Color/True-ColorŽž,ì “[],'—·\Ž!” ,ð,³,ç,É[],'—%ø»  
SC-88,ì System Mode Set fGfNfXfNf<[]fVfu,É'í,·,é[]^—[],ð'Ç%øÁ  
@GCIRCLE,ìfofO'¼,μ  
fŠfXfgŠÖ~A,ìfR[]fHCE©'¼,μ (CE©'¼,μ,½,¾,¯,Å[]V,½,È<@“\`Ç%øÁ,Í, ,è,Ü,¹,ñ)  
fŠfXfg·Ö[]Wf\_fCfAf[]fO,ìfŠfXfgf{fbfNfX“à,Åfhf%ofbfOfAf“fhfhf[]fbfv%øÁ\  
List,Document,ð·ÉfEfBf“fhfE,Å·\Ž!%øÁ\  
DEFAULT.WRD,ª,É,ç,Æ—\',·,·,éfofO,ð[]œ<Ž  
fxf“f}f}[]fNfefXfg,ìfefXfgŽžŠÖ'Z[]k (20·b=>6·b)  
MAGftf@fCf<“WŠJ,ì[],'—%ø» []i,½,¾fRf“fpcf<f[]fvfVf#f“ ,ð·İ,¹,½,¾,¯[]  
fCf“fNf<[]fHftf@fCf<CE©'¼,μ,É,æ,èfffbfhfR[]fH,ð[]íCE ,  
WRD,ìf^fCf~f“fo,ìŽáŠ±·İ[]X  
%ø%ø'tó<μ(SyŠì[]ACE®“Ö[]AfRf“fgf[]f<f[]fbfZ[]fW“™),ð·\Ž!,Å,«,é,æ,æ,É,·,é  
f[]fj...[]fo[][,Æ%ø²,ìfc[]f<fo[][,ð·İ[]X  
WRD[]%øŠú%ø»,ð[],'—%ø» %ø%ø'tó<μ·\Ž!,ì[]%øŠú%ø»,ÉŽžŠÖ,ª,©,©,é,ì,Å[]},O (T\_T)  
fRf}f“fhf%ofCf“ ,Éftf@fCf<-¼,ðŽw'è,·,é,ÆŽ©“®“l,É%ø%ø'tŠJŽn,μ,Ü,·[]B  
[]i,·,Å,É<N“® ,μ,Å,ç,½[]ê[]# ,ÍDDECEo—R,Å%ø%ø'tŠJŽn[]j  
RCPff[]f^ ,ìNoteON/OFFŠÇ—[],É—â“è“ ,ª, ,Å,½,ì,ð%øü'P  
<[]\$“l,Éf[]f[]g , ,É[]o—Í,³,¹,é<@“\,ð'Ç%øÁ  
@TCLS(),É, , ,ç,Å98,ìfof%øftfBfbfNfLfff%øfNf^'í%øž  
WRD,ì·¶Žš·\Ž!,ÉŠÈ'P,ÉfLfffbfVf“fo<@[]\,ðŽg,æ,±,Æ,É,æ,è[]i“è·”,ìWRD,É  
, , ,ç,Å[]j[],'—%ø»,μ,Ü,μ,½[]B  
DDEFt[]fožd—l,ð,Ü,ÚCE^'è[]B  
fŠfXfgfEfBf“fhfE,ìftfHf“fg,ð·İ[]X%øÁ“\,É,μ,Ü,μ,½[]B  
fŠfXfgfEfBf“fhfE,Éftf@fCf<-¼,ð·\Ž!,·,é,±,Æ,ª,Å,«,Ü,·[]B  
fAf<fof€<@“\[]H,ð,Å,¯,Ü,μ,½[]B[]i,±,é,É,æ,èfx[]f^“Å,É'¶[]Y,μ,Å,ç,½fVf#[]f[]g  
fjfbfg<@“\,Í[]í[]œ,³,è,Ü,μ,½[]B[]j  
88PRO,ì88MAP,Å[]³[]í,É[]Ø,è'Ö,ì,É,çfofo,ð[]C[]³  
MIDI[]%øŠú%ø»Žž,ÉfEfFfCf[]g,ð,©,¯,ç,é,é,æ,æ,É,μ,Ü,μ,½[]B(MODULE.DEFŽQ[])  
,Q[]d<N“® ,Å,«,é,æ,æ,É,μ,Ü,μ,½[]B[]i[]\$CEÁ·t,«,Å,·,ª[]j  
fgf%øf“fXf[]f[]fY[]Af`fff“f[]f<f~f...[]f[]g,ª,Å,«,é,æ,æ,É,É,è,Ü,μ,½[]B  
fc[]f<f`fbfvfEfBf“fhfE,ð·\Ž!,Å,«,é,æ,æ,É,μ,Ü,μ,½[]B  
fhfLf...f[]f“fg·\Ž!,ì[]Ú[]AWindows,ª·\Ž!,Å,«,é^É[]ã,ìfTfCfY,¾,Å,½[]ê[]# ,ÉCEx[]  
%ø¹,ª,É,éfofo,ð[]œ<Ž[]B  
fGf%ø[]f`fFfbfN,ð<%ø»[]i[]“x,Í,©,É,è<—Í,Å,·[]j  
LZHftf@fCf<,ì'í%øž  
fhfLf...f[]f“fg·\Ž!ftfHf“fg,ð·İ[]X%øÁ“\,É  
fhf[]fbfv,³,è,½<É,ð'!%ø%ø't,·,é[]fvfVf#f“ ,ð'Ç%øÁ  
fŠfXfg·\Ž!Žž,ÉWRD·t,«,ìftf@fCf<,ð[]Å[]¶,·,é,ÆŽ©“®“l,ÉWRDfEfBf“fhfE,Ö[]Ø'Ö  
,é[]fvfVf#f“ ,ð'Ç%øÁ  
DirectDraw,ì%øæ—Éf,[]fH[]Ø'Ö,ìžd·ù,ð·İ,ì,ç,è,é,æ,æ,É,μ,½[]B  
TMIDI16.DLL“à,ì%ø%ø'tfGf“fWf“ ,ìCEy—É%ø»  
WRDftf@fCf<,ª“Y·t,³,è,Å,ç,é,©,Ç,æ,©,ð·ª,©,é,æ,æ,É,μ,½[]B  
MAGftf@fCf<,ì“WŠJ,ì[],'—%ø»[]if<[]fV't,É—U“±·İ[]”,ðŽg—p,μ[]A[]œŽž-½—ß,ð[]íCE ,[]j  
[]—CE^%ø»Žž,ÉCEÀ,èAlways On Top,Å,«,é,æ,æ,É,μ,½[]B  
[]—CE^%ø»Žž,ÉCEÀ,èf^fCf[]f<fo[][,Æf[]fj...fo[][,ð[]Á,¹,é,æ,æ,É,μ,Ü,μ,½[]B



midiOutShortMsg(),đŽg—p,·,éƒ,□[fh,đŸ' u□B,±,ê,íS-YG20ŽŽ—p"Å,ÅŠm" F  
,μ,½Ē»□Ů,đ%oñ"đ,·,é,½,ß,É,Å,¯,½,à,ì,Å,·□B  
-³ĒÅf<□[fv,ìftf@fCf<,É'í%ož

# fgf~f...fCE [fVf#f" <@ "\,É,Â,ç,Ä

TMIDI,ì"ÁF,ì1,Â,É,±,ìfgf~f...fCE [fVf#f" <@ "\,ª, ,è,Ü,·B

,±,ìk@ "\,íA—á,ì,îSC-55mkII"™ GS<@Ší,ÂCM-64—p,ìLA/PCM,ìff [f^,ð•,ç  
,½,èASound Blaster,âSC-33,È,Ç,ìfof"fN127,ª-³,çŠyŠí,Â,àAfof"fN127,ì  
%º¹,ð,f,ìfLffsf^fç,Éfpbf` ,µ,½,è,·,é,±,Æ,ª,Â,«,Ü,·B

,ç,ì,æ,ª,Éfgf~f...fCE [fVf#f" ,µ,Ä,ç,é,©,ìA f,FWf... [f'è`ftf@fCf<(module.def)  
,ì†,ðŽQAE,µ,Ä,ª,³,³,çB

ŽÀÛ,É%ºº't,·,é,Æ,«,ìA<Èff [f^,ìfhfL...f [f"fgftf@fCf<,âA'è-¼Aftf@fCf<-  
¼,ðŽQ,ì,É,µ,Ä'ìÛ%º¹CE¹,ðŽ©"®"»'è,µ,Äfgf~f...fCE [fVf#f" ,ð,µ,Ü,·B"»'èCE<%ºÈ,ìó<µ•  
Ž!•" ,É\Ž!ª,è,Ü,·B

"Y•t,ìf,FWf... [f'è`ftf@fCf<,Â,ìA'ìÛ%º¹CE¹,ÆŽg—p%º¹CE¹,ª^è'v,µ,½,Æ,«,ìA,È,É,àŽè,ð  
%ºÁ,ì,Ü,¹,ñB

## "Y•t,ìf,FWf... [f'è`ftf@fCf<,ª'í%ºž,µ,Ä,ç,é•İŠ•

- ìÛ%º¹CE¹ => Žg—p%º¹CE¹
- SC-33/55CEn => SC-88 55Map,ÉfZfbfg
- SC-88 => SC-55/33CEn GM,Æ,µ,Ä%º
- %º't(fof"fNfZfCEfNfg/fGfNfXfNf< [fVfu-³CEø)
- SC-88 => ,» ,ì¹/4(GM) GM,Æ,µ,Ä%º
- %º't(fof"fNfZfCEfNfg/fGfNfXfNf< [fVfu-³CEø)
- ,» ,ì¹/4(GM) => SC-33/55/88 GM,Æ,µ,Ä%º
- %º't(fof"fNfZfCEfNfg/fGfNfXfNf< [fVfu-³CEø)
- SC-55 => SC-33 Bank126,127,ðfgf~f...fCE [fg,·,é
- CM-64CEn => SC-33/55/88 LA/PCM%º¹CE¹,ðfgf~f...fCE [fg,·,é
- SC-33/55/88 => SoundBlaster 32
- GS,ìfGfNfXfNf< [fVfu^Bank126,127,ðfgf~f...fCE [fg,·,é
- Roland GSCEn=> YAMAHA XGCEn Bank126,127,ðfgf~f...fCE [fg

Û,µ,,ìAhttp://www.ns.kogakuin.ac.jp/~c396022/tmidi/,ìMIDIfgf~f...fCE [fVf#f" ,É,Â,ç  
,Ä,ð,²—,ª,³,³,çB

# fGf~f...fCE [fVf#f" <@”\,ìŽg—p•û-@

,Ü, AŠĀ<<Y'è-MIDIfGf~f...fCE [fVf#f", ÉAZ©•ª,ªŽg—p,·,é%°¹CE¹f,fWf...  
[f<,l<@Ží,đ'l,ň,Ā,,¾,¾,çB

ŽŸ,ÉAfGf~f...fCE [fVf#f",µ,½,ç<Èff [f^,đ%  
%°'t,¾,¹,Ü,·B,»µ,ĀAZ©“®”»è,ìó<µ,đCE©,é,½,ß,ÉAó<µ•\Ž!,ì%°E  
%°°đCE©,Ü,·B,à,µTHRU,¾,Ā,½,ç%°¹CE¹-¼,ª,x,Ü,“»è,¾,ê,Ā,ç  
,Ü,¹,ň,ì,ĀAZè“®,ĀŽw'è,·,é•K—v,ª, ,è,Ü,·B

Žè“®,ĀY'è,·,é,É,íA[Option]-[TDF Edit],ĀA,»,ìff [f^,ª'îŮ,Æ,µ,Ā,ç,é%°¹CE¹,ì-  
¼'O,đ'l,ň,Ā,,¾,¾,çB

**f,fWf... [f<'è<`ftf@fCf<,É,Â,ç,Ä**

f,fWf... [f<'è<`ftf@fCf<,l'†,đ,<sup>2</sup>—,.,<sup>3</sup>/<sub>4</sub>,<sup>3</sup>,ç□B

