


☐@f0f%ftfBfbfN'Ê☐Mf\ftfg

☐@☐»☐Ý☐AŽâ→,Æ,È,è,Â,Â, ,é☐Af0f%ftfBfbfN'Ê☐Mf\ftfg,ì☐Å☐V"Å,Å,·☐B

☐@  "ú-{“d<CŠ”Ž@%iŽĐ OnLive! Traveler




☐@


 People☐ê-pf0f%ftfBfbfN'Ê☐Mf\ftfg Guippy-‡U for Windows V.1.21



☐@

 NIFTY-Serve☐ê-pf0f%ftfBfbfN'Ê☐Mf\ftfg NIFTY Manager for Windows95 Version 2.00


☐@

 BIGLOBE fIf“f%fCf“fTfCf“fAfbfvfc☐[f<


☐@

 "ú-{“d<CŠ”Ž@%iŽĐ☐@WorldTALK for BIGLOBE

☐@

 BIGLOBE PC-VANfifrfQ☐[f^ Ver. 1.62

☐@

 fpf\fRf“'Ê☐M'Î%ž,`,s,h,rœð'Ê☐î•ñf^☐[f~fif<

☐@

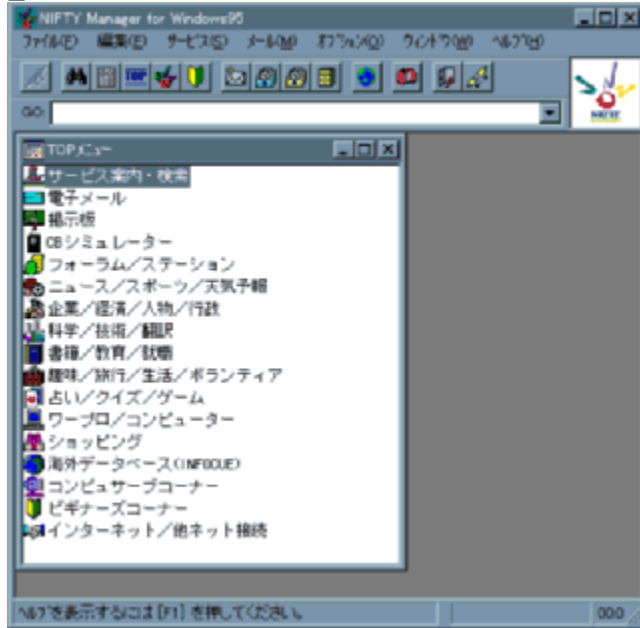
 "úCoMIXf0f%ftfBfbfN'Ê☐Mf\ftfg MIXNAV Ver 1.1.0

☐@NIFTY Manager for Windows95 Version 2.00

インストールの実行

📁 žŮ~^ffBf&fNfgfŠ☐@DISC2:\GUITERM\NITYMAN

☐@



🔴 ŠT-v

☐@NIFTY Manager ,Í☐A'N,É,à,í,©,è,.,çGUI (Graphical User Interface) ŠĀ<«,ĀNIFTY-Serve,đ~-p,Ā,«,éNIFTY-Serve ☐ê-p,ì'Ê☐Mf\ftfgfEfFfA,Ā,·☐BNIFTY Manager ,Ā,Í☐AfAfCfRf",âf☐fjf... ☐[,đf}fEfX,ĀfNfŠfbfN,·,é,¾,~,ÌŠÈ'P,È'€☐ì,ĀNIFTY-Serve ,ÌŠefT☐[frfX,â~-p,Ā,«,é'Ê☐MŠĀ<«,đ'ň<ÿ,·,é'¼☐A·;☐"ftf@fCf<,ì^êšþf_fEf"f☐☐[fh,âJ PEG&æ'æ,ÌfIf"f%fcf"·\Ž; ,È,ç,Ì<@"\,àŽĀ€», ³,ê,Ā,ç,Ū,·☐B

🔴 “Á'¥

☐EWindows 95,É☐€<'☐B32frfbfgfAfvfŠfP☐[fvfþf",É,æ,éšî-{-<@"\,ÌÈø -;Éü☐ă☐B
☐EWindows 95,Ìf}f<f`f^fXfLf"f0<@"\
,É,æ,è☐A'Ê☐M't,Ì^Ā'è☐«,â'ă•☐,ÉÉü☐ă☐B
☐EWindows 95,Æ<æ'Ê,Ìft☐[fU☐[fcf"f^☐[ftfF☐[fx☐B

□@□Å'â255•¶Žš,Ü,Å,Ìf□f“f0ftf@fCf<-¼,ðfTf|□[fg□B
□@fAfCfRf“,Ì□à-¾,ð•\Ž|,·,éf`fbfvfwf<fv□B
□EWindows 95,Å'Ç%Á,³,ê,½□V,μ,ϕf,fff€□\$€äfCf“f^□[ftfF□[fX
TAPI,É'Î%ž□B
□@f,fff€,ÍWindows95,É,æ,Á,ÄŽ©“®”FŽ-,³,ê□A□Ý'è,Í•s-v,Å,·□B
□EfLfffrflfbfg,È,Ç,Ìff□[f^•Ú'¶,ÉDAO(Microsoft Data
AccessObject),ðŽg-p,μ□A•Ú'¶€ø-|,ª'å•□,É€ü□ã□B
□EfCf“f^□[flfbfg,Ö,Ìf_fCf,,f<fAfbfvPPPŽ©“®□Ú'±□Ý'è-p,Ìfc□[f<,ð-
p^Ó□B-É“|,É□Ý'è,ðŽ©“®”I,ÉŽA□s,μ,Ü,·□B

 “®□ìŠÂ<<

1. fIfyf€□[fVf#f“fVfXfef€


ŠeŽĐ,ª'ñ<Ÿ,·,é“ú-{€ê MS-Windows
3.1“®□ì<@Ží□B,Ü,½□AWindows95,É,Â,ϕ,Ä,Í□AWindows
Ver3.1,ÌfAfvfŠfP□[fVf#f“,Æ,μ,Ä“®□ì,μ,Ü,·□B

2. fn□[fhfEfFfA,É'Î,·,é-v<□

Intel486DX/33Mhz^È□ã,ð“<□Ú,μ□AWindows 95,ª%Ò“®,·,éfp□[f\
fif<fRf“fsf...□[f^□i486DX2/66Mhz^È□ã,ð□,,□\$□j
Šî-{f\ftfgfEfFfA
□@Microsoft “ú-{€ê Windows 95

□š,²'□^Ó□š
Windows Ver3.1,“,æ,ÑWindows NT3.51,Å,Í“®□ì,μ,Ü,¹,ñ□B

f□f,fŠ
□@8Mbyte^È□ã□i16Mbyte^È□ã,ð□,,□\$□j
fn□[fhfffbfXfN
□@20Mbyte,Ì<ó,«-e-Ê
f}fEfX
□@Windows95,Å~-p,Å,«,éf}fEfX
f,fff€
□@Windows95,ÅfTf|□[fg,³,ê,Ä,ϕ,éf,fff€

 □@,²Žg-p,Ì'0,É□ANIFTY Signup□ENIFTY Manager -~-p<K-ñ□ADISC2:\
GUI TERM\NIFTYMAN\README.TXT□ADISC2:\GUI TERM\NIFTYMAN\
README2.TXT,ð,²—,,¾,³,ϕ□B

□@“úŒoMIXf0f%ftfBfbfN'Ê□Mf\ftfg
 □@□@MIX NAV for Windows 3.1 Version 1.1.0

インストールの実行

□ Źû~^fffbfœfnfgfš□@DISC2:\GUITERM\MIXNAV

□@



● ŠT-v

□@“úŒoMIX□ê-p, Ìf0f%ftfBfbfN'Ê□Mf\ftfg□uMIX NAV□v, Å, ·□B%æ-
 Ê, ðf}fEfX, ÅfnfšfbfN, µ, Ä, ç, , ±
 , Æ, É, æ, è□A“úŒoMIX, Å, Ì'Ê□M, ðšÈ'P, É□s, È, †, é, æ, x, É, È, Á, Ä, ç, Ü, ·□B

□@□ufCf“fXfg□[f<, ìžÀ□s□v, Ì
 %Ó□š, ð□Af}fEfX, Å□¶fnfšfbfN, ·, é, ÆfCf“fXfg□[f<, æžn, Ü, è, Ü, ·□B

□@□%ñ, Ì<N“@žž, É, ÍMIX NAV, Ì□u'Ê□MÝ'è□v, ð'I'ð, µfjfbfnfł□[f€
 , âfAfnfZfXf|fCf“fg, ÌÝ'è, ð-Y, ê, , É□s, È, Á, Ä, , ¼, ³, ç□B

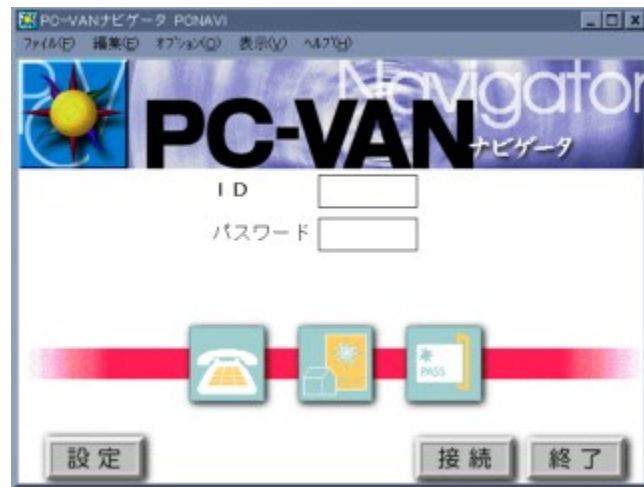
 @Ú, μ, , Í ADISC2:\GUITERM\MIXNAV\README.TXT, đ, ²—, , ³/₄, ³, ϕ B

PC-VAN Ver 1.62

インストールの実行

インストールの実行

PC-VAN Ver 1.62



PC-VAN Ver 1.62

PC-VAN Ver 1.62

, ç, ü, · □B □î • ñ, ì% { — □A f \ f t f g f E f F f A, Ì f _ f E f “ f □ □ [f h, È, Ç □A P C -
VAN, É, “, -, é
‘ € □ ì, ¢ □A f } f E f X, Ì f N f Š f b f N, Ì, Ý, Å □ s, !, Ü, · □B

□ @ f p f \ f R f “ ‘ Ê □ M, É □ K □ n, μ, Ä, ç, È, ç □ % □ S Ž Ò, Ì • û, â □, -
î Ž Ò, Ì • û, È, Ç □ A • □ □ L, ç ‘ w, Å P C -
VAN, ð - e ^ õ, É, “ Ž g, ç, ç, ½, ¾, -, é Š Â < «, ð - Ú Ž w, μ, Ä, ç, Ü, · □B

□ @, Ü, ½ □ A f 0 f % f t f B f J f <, È % æ - Ê □ ä, É, “, ç, Ä □ A E » Ž À, Ì □ ç Š E, ð Ž U □ ô, ·, é, æ, x
, É Š ‘ Š o, Å ~ - p
, Å, <, Ü, · □B ~ - p, μ, ½, ç f T □ [f r f X, ð f } f E f X ‘ € □ ì, Å □ i, è □ ž, ñ, Å, ç, -
, ¾, -, Å □ A - Ú “ I, Ì f T
□ [f r f X, É f A f N f Z f X, Å, « □ A Š È ‘ P, É Š y, μ, P C - V A N, Ì Š e Ž í f T □ [f r f X, ð, ² - ~ -
p, É, È
, ê, Ü, · □B

□ @ □ i f o □ [f W f † f “, É, æ, Á, Ä Ž g, !, é < @ “ \, É □ Š E À, ¢, , è, Ü, ·, Ì, Å □ A, ² ‘ □ ^ Ó
% °, ³, ç □ B □ j

P C ° V A N f i f r f Q □ [f ^ □ [, É, Í, x, ³, - f o □ [f W f † f “, Æ ‘ ¾ - z f o □ [f W f † f “, ¢, , è, Ü, ·
□ B ^ á, ç, Í f v f □ f o f
% f € ‘ †, Ì Š G, Ì, Ý, Å, ·, Ì, Å, “ □ D, «, È f o □ [f W f † f “, ð f C f “ f X f g □ [f <, μ, Ä, -
, ¾, ³, ç □ B

 □ Ú, μ, , Í D I S C 2 : \ G U I T E R M \ P C N A V I \ U S A G I \ I N S T A L L . T X T, ð, “ Ç, Ý, , ¾, ³, ç

☐@Guippy-#U for Windows V.1.21

インストールの実行

☐ Žû~^ff fBf€fNfgfŠ☐@DISC2:\GUITERM\GUIPPY2

☐@



☐ ŠT-v

☐@Guippy, Í☐AWindows, ÌGUI, đŠ^, ©, μf}fEfX'€☐ì, ÅPeople, a~p, Å, «, é'É☐Mf\ftfg, Å, ·☐BGuippy, ÍPeople, Ì"dŽqf☐☐[f<☐A"dŽq %ï<cŽº, È, Ç, Ì<@"\, Ì~p, Í, à, ÿ, ë, ñ, Ì, ±, Æ☐Aftf@fCf<"']- , È, Ç, àf}fEfX, Å'€☐ì, Å, «, Ü, ·☐B

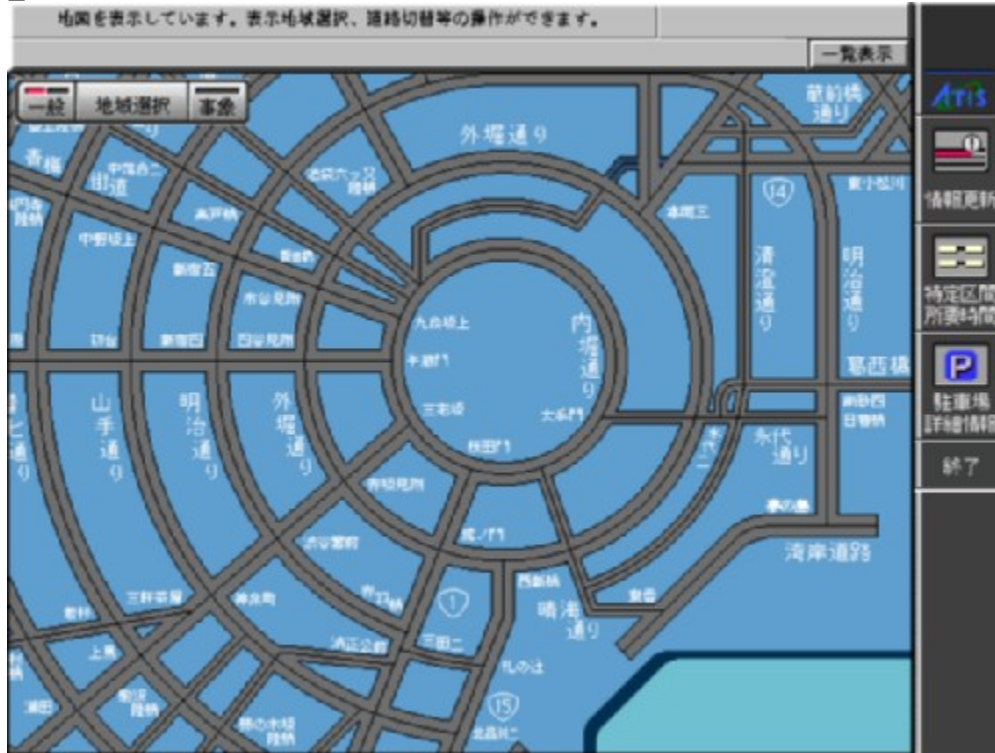
☐@☐Ú, μ, , Í☐ADISC2:\GUITERM\GUIPPY2\README.TXT, đ, ²—, , ¾, ³, €☐B

□@fpf\frf''Ê□M'Î%ž,`,s,h,rÆð'Ê□î•ñf^□[f~fif<

インストールの実行

□ žŮ~^fffbfÆfnfgfš□@DISC2:\GUITERM\ATISTERM

□@



□ ŠT-v

fpf\frf''Ê□M'ĀATISÆð'Ê□î•ñf^□[f~fif<,Í□ANIFTY□|
 Serve,Ů,½,ÍPC□|VAN,ð%î,μ,ĀATIS□iÆð'Ê□î•ñft□|
 frfx□iš"□j□j,©,ç"¹~HÆð'Ê□î•ñ,ðžó□M,μ'n□}□ã,É□a'Ø□î•ñ×<K□\$□î•ñ™™,
 ð•\ž|,·,éfvf□f0f%fe,Å,·i^È%°□AATISTerm,Æ,μ,Ů,·□B

,±,İf\ftfgfEjFfA,ÍWindows3.1□ê-
 p,Å,·□BWindows95,Å,Í"®□ì,μ,Ů,¹,ñ,ì,Å,²-¹□³,,¾,³,¢□B

□ "®□ìšĀ<<

□EWindows□@3.1,ª"®□ì,·,é<@ší□iDOS/V<@□A,Ů,½,ÍPC□|

98, ", æ, Ñ, », ÌŒÝŠ· < @[] j
[]E" @[] i CPU, Í[] Ai486DX/33MHz ^ È[] ä, ð[] ,, [] \$
[] @[] i 'A, µ[] Ai486SX/33MHz ' ö "x, Ì < @Ší, Å, à [] ^ - [] %ž " šžžšô, a 'x, -
, È, è, Ü, ·, a žg-p%Å" \, Å, · [] B[] j
[] Efn[] [fhfffBfXfN, Ì < ó, «-e-È, Í[] A10MB ^ È[] ä
DOS, ÌŠÁ < «· Ì [] "TEMP, Ìžw'è, ·, éfffBfŒfNfgfŠ, É[] A[] Ì < Æ-
p, Ìftf@fCf <, ðŠi" [, µ, Ü, · [] B[] i2[] `3MB' ö "x[] j
[] Ef[] f, fŠfTfCfY, Í[] A7.6MB ^ È[] ä
[] Ef, fff€, Í2400bps[] AMNPFNF%FX5 ^ È[] ä
[] @[] if, fff€, Í·K, MNPFNF%FX5 ^ È[] ä, Ì, à, Ì, ðžg-p, µ, Ä%º, ³, ç[] B, », x
, Å, È, ç[] ê[] †, ÍŒð' È[] î·ñ, a, x, Ü, · \ž! , Å, «, È, ç, ±, Æ, a, , è, Ü, · [] B[] j
[] EVisualBasicf%fcfuf
%fŠftf@fCf < [] @VBRJP200.DLL[] ifZfbfgfAfbfv[] Efvf[] f0f%f€, É·K-
v, È, È, è, Ü, ·, a[] A-{fvf[] f0f%f€, É, ÍŠÜ, Ü, è, Ä, ç, Ü, ¹, ñ[] B[] j

fCf" fXfg[] [f <

[] i1[] jfvf[] f0f%f€, Ì ^ ³[] kftf@fCf <, ðfn[] [fhfffBfXfN, ÉfRfs[] [, µ, Ü, · [] B
[] @[] @[] @fRfs[] [[] æ, Í[] AfN[] [fhfffBfXfN[] Efhf%fcfu, Ì\
[] if < [] [fg[] jfffBfŒfNfgfŠ, É
[] @[] @fRfs[] [, µ, Ü, · [] Bf < [] [fg ^ Èšô, Å, Í, x, Ü, "®[] Ì, µ, Ü, ¹, ñ[] B

[] @[] @-á) > COPY A:*. * C:\[] @

[] i2[] jDOSfvf[] f"fvfg, ©, ç ^ È%º, ÌfRf}f"fh, ðžÀ[] s, µ, Ü, · [] B

[] @[] @-á) > ATISP109[] @[] ifŠf^[] [f"[] j

[] @[] @, ±, ÌfRf}f"fh, ðžÀ[] s, ·, é, Æ[] Aftf@fCf <, ð"WSJ, µ, Ü, · [] B

[] | Šù, É ^ È '0, Ìfo[] [fwf†f", a fCf" fXfg[] [f < [] Ī, Ý, Ì[] ê[] †[] Aftf@fCf <, ð[] ä[] ' , «
[] @, ·, é, ©, Ç, x, ©Šm" Ff[] fbfZ[] [fw, a· \ž! , ³, è, Ü, · [] B, ±, Ìžž[] AZÿ, Ìftf@fCf <
[] @, ð[] æ, ç, Å[] u, ""[] v, ð"ü-Í, µ, Å, , ¾, ³, ç[] B

[] @[] @[] ä[] ' , «, µ, È, ç[] i[] u, ž[] v, ð"ü-Í, ·, é[] jftf@fCf <

[] @[] @[] Emenupc.ini

[] @[] @[] Eatismodm.tel

-v, a [] ä < L, Ìftf@fCf <, ð[] ä[] ' , «, ·, é, Æ[] A' È[] M[] ðŒ[] , ð%ü, ß, Ä[] Ý'è, ·, é·K

[] ¶, ¶, Ü, · [] B

□i3□jWINDOWS,đ<N“®,μ,Û,·□B

□i4□jfvf□f0f%€f}fl□[fwff,Å□AfAfCfRf“,đ“o~^,μ,Û,·□B
□@□@□iŠù,ÉfAfCfRf““o~^□İ,İ□ê□#□A,±,İŽè‘±,«,Í•s-v,Å,·□B□j
□@□@□@“o~^,·,éfvf□f0f%€f,Í□AZŸ,İ2,Å,Å,·□B

□@□@□@□E\ATIS\ATIS_PC\EXE\MENUPC.EXE

□@□@□@□@f^fCfjf<:ATISTerm
□@□@□@□@fRf}f“fhf%€f“:C:\ATIS\ATIS_PC\EXE\MENUPC.EXE
□@□@□@□@ŽÀ□sŽž,İfffbf€fNfgfŠ:C:\ATIS\ATIS_PC\EXE
□@□@□@□@ĚÄ,Ñ□o,μ-p,İfvf#□[fgfJfbfgfL□[: ,È,μ

□@□@□@□E\ATIS\ATIS_PC\EXE\ATSETUP.EXE

□@□@□@□@f^fCfjf<:SETUP
□@□@□@□@fRf}f“fhf%€f“:C:\ATIS\ATIS_PC\EXE\ATSETUP.EXE
□@□@□@□@ŽÀ□sŽž,İfffbf€fNfgfŠ:C:\ATIS\ATIS_PC\EXE
□@□@□@□@ĚÄ,Ñ□o,μ-p,İfvf#□[fgfJfbfgfL□[: ,È,μ



□Ú,μ,,Í□ADISC2:\GUITERM\ATISTERM\README.DOC,đ,²—,,³/₄,³,¢□B

WorldTALK for BIGLOBE

インストールの実行



Žû~^fffbf@fnfgfš

DISC2:\GUITERM\WTALKBBS



ŠT-v

WorldTALK for BIGLOBE, ABIGLOBE, @ "\, ŽÀ Ò, Éžg, Á, Ä ' Ì±
, μ, Ä, ç, ½, ¾, ½, β, Ì, à, Ì, Å, · BBIGLOBE
, Í AC · CfCf "f^ [flfbfgfT [frfX umeshv Afpf\
frf "É MfT [frfX uPC-
VANv, ", æ, ÑfCf "f^ [flfbfgfRf "fef "fcfT [frfX uThe Cyber
Plaza v, Ì, R, Å, ÌfT [frfX, ð-Z±, μ "W, ³, ¹, ½fp [f\
fif < Ef } f < f` f fffBfAfT [frfX, Å, · B



Ú, μ, , Í DISC2:\GUITERM\WTALKPCV\README.TXT, ð, ²—, , ¾, ³, ç B




, " - â, ç ±, í, ¹ æ

"ú-{ "d < CŠ "Ž @ % i Ž Đ

BIGLOBE JfXf^f} [fTf| [fgTEL F0120-55-0962

①BIGLOBE fIf“f%fcf“fTfcf“fAfbfvfc[]f<

インストールの実行

 žŭ~^ffBf&fNfgfš@DISC2:\GUITERM\BIGLOBE

 šT-v

fpf\frf“’ÊMfT[]frfXPC-
VAN[]Afcf“f^[]flfbfg[]ú’±fT[]frfXmesh, îĒÂ[]lĒü, ~[]ú’±fT[]frfX[]Afcf
“f^[]flfbfgfRf“fef“fcfT[]frfXThe Cyber Plaza, đ-
Z[]‡, ³, ¹, ¹/₂[]uBIGLOBE[]v, İfIf“f%fcf“fTfcf“fAfbfvfc[]f<, Å, ·[]B
fcf“fXfg[]f<f{f^f“, đ, “, μ, Äfcf“fXfg[]f<, μ, Ä%⁰, ³, †[]B

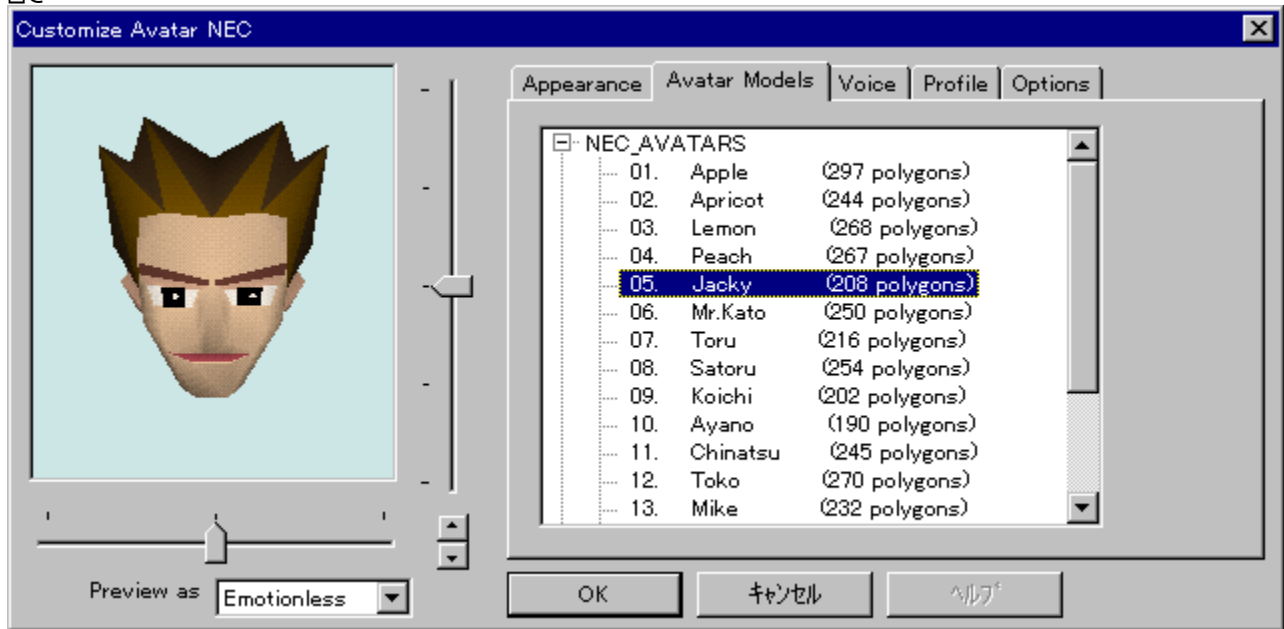
OnLive! Traveler for BIGLOBE

インストールの実行



Žû~^fffbfçfnfgfš

DISC2:\GUITERM\3DVCHAT



ŠT-v

OnLive! Traveler ,ÍA•Ä OnLive! TechnologiesŽĐ,İŠJ",μ,½
 3ŽŸE³fRf"fsf...[f^fOf%ftfBfbfNfX,Æ
 %¹□²f`fffbfg<Z□p,ð'g,Y□#,í,½ 3ŽŸE³%¹□²f`fffbfgfVfXfef€,İ□ê-
 pfuf%fEfU,Å,·□B
 -~pžŸ,İž©•ª,İª□g,Æ,μ,Ä,İfAfof^□[,ð'I'ð,μ
 %¼'z<óŠŌ(OnLive!<óŠŌ,ÆÆÄ,Ń,Ü,·),ŌŽQ%Á,μ□A"~žž,É•;□",İ□l,Æ
 %i~b,ªŠy,μ,β,Ü,·□B OnLive!<óŠŌ,Å,İ%i~b,Í□A'Šžè,Æ,İ<-f,âÆü,«,É
 %ž,¶,½%¹-Ê□EžwÆü□«,ªfvf~f...fÆ□[fg,³,êžÀ□çŠE,İ,æ,¤,ÈÆø
 %Ê,ª"¾,ç,ê,Ü,·□B

æ-Ê%E□ã,İfCf"fXfg□[f<f{f^f",©,çfCf"fXfg□[f<,μ□A□uWhen Done
 Unzipping Run□v,Éf`fffbfN,ð,μ,Ä□uUnzip□v, ,é,ç,İ□uRun
 Winzip□vf{f^f",ð%Ÿ,μ,ÄfCf"fXfg□[f<,μ,Ä,¾,³,ç□B



□U,μ,,Í□ADISC2:\GUITERM\3DVCHAT\INDEX.HTM,ðwWwfuf%fEfU,Å,²
 —,¾,³,ç□B



, " - â , ç ð † , í , ð æ

“ ú – { “ d < C Š ” Ž @ % ï Ž Đ

BIGLOBE f J f X f ^ f } [f T f | [f g TEL F 0 1 2 0 - 5 5 - 0 9 6 2

