

☐@P&A fVfFfAfEfFfA

☐@P&A fVfFfAfEfFfA'ň<ÿ,É,æ,éŠeŽífvf☐fOf%f€ ,Å, .

☐  DOS fQ☐lf€

☐@☐@



Shattered Steel

**New!**

☐@☐@



Word Games at Camelot

**New!**



Windows fQ☐lf€

☐@☐@



Big Red Racing fff,"Å

**New!**

☐@☐@



TZ-Minigolf ‡U

**New!**

☐@☐@



World Empire ‡W fVfFfAfEfFfA"Å

**New!**



Windows ft☐lfefBfŠfefB

☐@☐@



InfoCourier

**New!**

☐@☐@



PhotoImpact GIF Animator v1.0



PhotoImpact GIF/JPEG SmartSaver v1.1



### TOP10 fVfFfAfeFfA



1.



WinZip v6.2 (Nico Mak)



2.



Duke Nukem 3D ftf<fo[fWf#f“(3D Realms Entertainment)



3.



Virtual Painter ver2.30J (“~’°□,□j



4.



GIF Construction Set 95 1.0N  
(Alchemy Mindworks)



5.



Screen Thief 95 (Nildram Software)



6.



Graphic Workshop Version1.1w (Alchemy Mindworks)



7.



Secret Agent v1.2(16bit”Å) v2.1(32bit”Å)  
(Ariel Communications)



8.



WinZip Self-Extractor v2.0 (Nico Mak

@ 9.



TopDraw (Top Software

@10.



MOD4WIN (Jens Puchert

P & A fvFFfAjEfFfA

TEL: (0425) 35-9901('ã) FAX: (0425) 35-

9902

NIFTY-Serve: PAF02461, CXH00400

190 "Œ<ž"s-š[ižs[ã[»'-1-3-6-2

@

(For information in English, call 0425-35-9901)



# Shattered Steel



Žů~^ffBfEfNfgfŠ@DISC1:\P\_AND\_A\SS



ŠT-v

“ú- { , Å , à Å < ß Å ' Î ï f T f C f g , Å , ß , « , ß , « , Æ l < C , ð L , Î , µ , Ä , ç , é , Ì , ð f { f b f g ' Î ï é ^ f Q [ f € , ¾ B , " D , Ý , Å ' • " ð , ð ' I ' ð , µ , ½ , ç A , ³ , f o f g f < f t f B [ f < f h , Ò B " G , Ì < ê Š , ð Š m " F , µ , ½ , ç í , ç , Ì % Î Š W , ð Ø , ç , é , é , í , - , ¾ , ð A , R , c \ Ž ! , ³ , é , é ' n € ` , ð " a , É " ü , é , Ä A , x , Ü , - " G , © , ç , Ì U € , , ð , æ , - , É , ð , ç U € , , ð , µ , © , - , Ä , ç , ± , x B f t f < f o [ f w f f f " , Ì f ~ f b f v f f f " , Í ' S • " , Å , T , O A , » , é , ¼ , é f ^ [ f Q f b f g , a ^ Û , È , é , Ì , Å ' Ò Ó , ð • K - v , ¾ B ' Î ï í ' Î % Ž , Å A l " , Í Å , , P , U l , Ü , Å B f { f N f z f < , Æ , ç , x V , µ , ç f o f % f t f B f b f N f e f N f m f f w [ , ð < Ì Ž g , µ , Å ` , © , é , ½ f o f g f < f t f B [ f < f h , Ì " ü , µ , ³ , ð A , Ü , , Š - " \ , µ , Ä , Ü , µ , ç B , È , " A f ~ f b f v f f f " f € f x f < f g f f f B f ^ , â ' Ç % Å f p f b f N , È , Ç , à " • \ , ³ , é , é - \ ' è B , ± , Ì H , Í , â , Á , Ì , è f { f b f g , a , Í , â , è , ¾ B !



Ú , µ , , Í ADISC1:\P\_AND\_A\SS\README.JPN , ð , " Ç , Ý , , ¾ , ³ , ç B

@ , ± , Ì v f f o f % f € , Í P & A , a " ú - { ' ä - " X , Æ , È , Á , Ä , ç , Ü , • B - { Ž u C D - R O M , Ì Ž g , ç • ú v , Ì Å I f y [ f w , É , , è , Ü , • " o ~ ^ - p Ž t , É < L " ü , Ì ð Å A F A X Å Ž è Ž t Å " d ~ b - " , Í N I F T Y - S e r v e , Ì " d Ž q f [ f < , É , Å • Ô ' - , - , ¾ , ³ , ç B U , è Ž , Ý Š m " F Ž Ÿ ' æ - X ' - , ³ , ¹ , Å , ç , ½ , ¾ , « , Ü , • B , È , " " o ~ ^ - , É , Í Å ' — ž ^ Ž è " - ž , ð Š Ü , Ü , é , Ä , ç , Ü , • B Ú , µ , , Í DISC1:\P\_AND\_A\ ORDER.JPN , ð , " Ç , Ý , , ¾ , ³ , ç B



## Big Red Racing

DOS/V"Å, ìfCf"fxfg[]f<[]@

インストールの実行

98 "Å, ìfCf"fxfg[]f<[]@

インストールの実行

DirectX, ìfCf"fxfg[]f<[]@

インストールの実行



Žû~^fffbf@fnfgfŠ[]@DISC1:\P\_AND\_A\BRR\DOSV(DOS/V"Å) \98(98"Å)



## ŠT-v

Big Red Racing, Ì<ß-ç-^, Ì'n<..., ð•' 'ä, É[]A  
 %Î[]^, â@Ž, È, Ç, ðŠÜ, P, ^, Ü, ' , Ü, È"Å'¥, Ì, , é'S24fR[][fX, ð[]A16Ží-  
 P, Ì[]æ, è•", ð'€ , Á, Ä[]í, ç"², 3Df@[][fvf"f0fQ[][f€  
 , Å, ·[]BfR[][fX, É, æ, èŽ0, ¾, -, Å, Í, È, []A<ó'tfR[][fX, Å, ÍfwfŠfRfvf^[][[]A[]...  
 []ãfR[][fX, Å, Íf{[][fg, È, Ç[]A, » , ê, ¼, ê'-"x, â'€[]ì[]«, ^U, È, é[]æ, è•", ð'€[]ì  
 , µ, È, -, ê, Î, È, è, Ü, ^, ñ[]B"-Ží, Ì3DfJ[][f@[][fXfQ[][f€  
 , Æ"äšr, µ, Ä[]A"ñ[]í, É, «, Ñ, «, Ñ, Æ  
 %ð"K, É"@[]ì, µ, Ü, ·[]B'Î[]ífQ[][f€[]Eflfbfgf[][]fNDWANGO, É'Î%ž, µ, Ä, ç  
 , Ü, ·, Ì, Å[]A[]Å'â6[]l, Ü, Å"-žž, É'Ê[]M'Î[]ífvf@[][, ^Šy, µ, ß, Ü, ·[]B  
 , ±, Ìfvf[]f0f%f€, ÌDirectX, ^•K-v, Å, ·[]B<N"@, µ, æ, x, Æ, µ, Ä[]u•K-  
 v, EDLL, ^, , è, Ü, ^, ñ[]v"™, Ìf[]fbfZ[][fw, ^•\  
 Ž!, ^, ê, é[]ê[]‡, Ì[]ADirectX, ^fCf"fxfg[][f<, ^, ê, Ä, ç  
 , Ü, ^, ñ, Ì, ÅDirectX, ð•Ê"rfCf"fxfg[][f<, µ, Ä%º, ^, ç[]B

,±,İfQ[f€,İDOS/V"Å,Æ98"Å,ª, ,è,Ü,·B,Žg,ç,İ<@Ží,É, ,í,<sup>1</sup>,ÄfCf"f  
Xfg[f<,μ,Ä%º,<sup>3</sup>,çB

 Ú,μ,,ÍADISC1:\P\_AND\_A\BRR\DOSV\README.JPN,đ,“Ç,Ý,,<sup>3</sup>/<sub>4</sub>,<sup>3</sup>,çB

@,±,İfvf[f0f%€€,ÍP&A,ª“ú-{'ã-“X,Æ,È,Á,Ä,ç,Ü,·B-{ŽuCD-  
ROM,İŽg,ç•úv,İÅIfy[fW,É, ,è,Ü,·“o~^~pŽ†,É<L“ü,İãAFAXA  
ŽèŽ†A“d~b -”,Í NIFTY-Serve ,İ“dŽqf[f<,É,Ä•Ô'-,-  
,<sup>3</sup>/<sub>4</sub>,<sup>3</sup>,çBÜ,èž,ÝŠm”FŽŸ'æ-X'-,<sup>3</sup>,<sup>1</sup>,Ä,ç,<sup>1</sup>/<sub>2</sub>,<sup>3</sup>/<sub>4</sub>,«,Ü,·B,È,“o~^~  
ž,É,ÍA'—ž^žè”-ž,ªŠÜ,Ü,è,Ä,ç,Ü,·BÜ,μ,,ÍDISC1:\P\_AND\_A\  
ORDER.JPN,đ,“Ç,Ý,,<sup>3</sup>/<sub>4</sub>,<sup>3</sup>,çB



## Word Games at Camelot



Žů~^fffbf@fnfgfš@DISC1:\P\_AND\_A\WGC



ŠT-v

fQ [ f€ , đŠy , μ , Ý , È , ª , ç%p ' PĚê AĚêæb , đŠw K , Å , « , éfvf f0f  
%f€ B36 , à , ĪfĚfxf< , ª-p^Ó , ³ , ê , Ä , ç , Ü , · , Ī , Å A-0 , « , é , ± , Æ , È , •x< , · , é , ±  
, Æ , ª , Å , « , é , Å , μ , ª , ¢ BŠw K , Å , « , é ' PĚê " , Ī3 , 300^È ã i " o ~ ^ " Å j B V , μ  
, ' PĚê , đ ' Ç%Á , · , é , ± , Æ , à , Å , « , Ü , · , μ A-  
%đ " xŠm " F , Ī , ½ , ß < L ~ ^ , đ^ó ü , · , é , ± , Æ , à % Å " \ , Å , · B



Ú , μ , , Ī ADISC1:\P\_AND\_A\WGC\README.JPN , đ , " Ç , Ý , , ¾ , ³ , ç B

@ , ± , Īfvf f0f%f€ , ĪP&A , ª " ú - { ' ã - " X , Æ , È , Á , Ä , ç , Ü , · B - { Ž u CD-  
ROM , ĪŽg , ç • ú v , Ī Å Īfy [ fW , É , , è , Ü , · " o ~ ^ - p Ž t , É < L " ü , Ī ã AFAX A  
ŽèŽ t A " d ~ b - " , Ī NIFTY-Serve , Ī " d Ž qf [ f < , É , Ä • Ô ' - , -  
, ¾ , ³ , ç B U , è ž , Ý Šm " F Ž Ÿ ' æ - X ' - , ³ , ¹ , Ä , ç , ½ , ¾ , « , Ü , · B , È , " " o ~ ^ -  
ž , É , Ī A ' — ž ^ Ž è " — ž , ª Š Ü , Ü , ê , Ä , ç , Ü , · B Ú , μ , , Ī DISC1:\P\_AND\_A\  
ORDER.JPN , đ , " Ç , Ý , , ¾ , ³ , ç B



## TZ-Minigolf #U

インストールの実行



Žû~^fffbfçfnfgfš@DISC1:\P\_AND\_A\TZGOLF



## ŠT-v

4□ł, Ü, Å“~Žž, Éfvfç□[ , Å, «, éf~fjjsf<ftfQ□[ f€□BfofŠfG□[fvf#f“, É•x, ñ,  
¾fR□[fX,Æ”ü, μ, çfof%ftfBfbfn□AfŠfAf<, Èçø%Ê%¹, ºŽç-  
□, Å, ·□Bfvfç□[f, □[ , ², Æ, İfXfRfA, âfnfCfXfRfA, İ•\Ž! , à, , è, Ü, ·□Bçä  
%Æ’°, Å, Ç, x, ¼□BfvfçfAfeffA”Å, Å, İ6fR□[fX, İ, Ýfvfç□[ , ·, é, ±  
, Æ, º, Å, «, Ü, ·□B



□Ú, μ, , Í□ADISC1:\P\_AND\_A\TZGOLF\README.JPN, ð, “Ç, Ý, , ¾, ³, ç□B

□@, ±, İfvf□fof%ç€ , ÍP&A, º“ú-{'ã-□“X, Æ, È, Á, Ä, ç, Ü, ·□B-{Ž□□uCD-  
ROM, İžg, ç•ú□v, İ□Å□Ify□[fW, É, , è, Ü, ·“o~^~pžt, É<L“ü, İ□ã□AFAX□A  
Žèžt□A“d~b -”, Í NIFTY-Serve , İ“džqf□□[f<, É, Å•Ô’-, -  
, ¾, ³, ç□B□U, è□ž, ÝŠm”FŽÿ’æ-X’-, ³, ¹, Å, ç, ½, ¾, «, Ü, ·□B, È, “o~^~  
ž, É, Í□A’—ž□^žè□”—ž, ºŠÜ, Ü, è, Å, ç, Ü, ·□B□Ú, μ, , ÍDISC1:\P\_AND\_A\  
ORDER.JPN, ð, “Ç, Ý, , ¾, ³, ç□B



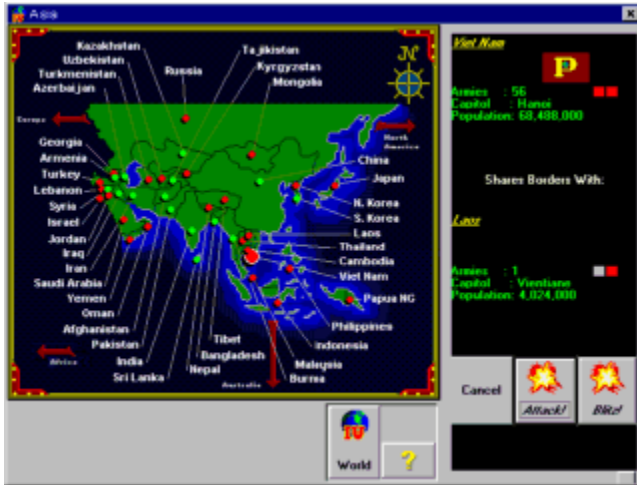




World Empire #W fvFfAfeFfA"Å



Žû~^fffbf&fnfgfš@DISC1:\P\_AND\_A\WEMPIRE4



ŠT-v

Complex block of special characters and symbols, including accented letters, mathematical symbols, and various glyphs.



Ú, μ, , ÍADISC1:\P\_AND\_A\WEMPIRE4\README.JPN, ð, "Ç, Ý, , 3/4, 3, ÇB

□@,±,İfvf□f0f%f€ , İP&A, ¢“ú—{ ‘ã—□“X,Æ,È,Á,Ä,ç,Ü, ·□B—{Ž□□uCD-  
ROM,İŽg,ç•û□v,İ□Å□Ify□[fW,É, ,è,Ü, ·“o~^—pŽ†,É<L“ü,İ□ã□AFAX□A  
ŽèŽ†□A“d~b —”,Í NIFTY-Serve ,İ“dŽqf□□[f<,É,Ä•Ô‘—, -  
,<sup>3</sup>/<sub>4</sub>,<sup>3</sup>,ç□B□U,è□ž,ÝŠm”FŽŸ‘æ-X‘—,<sup>3</sup>,<sup>1</sup>,Ä,ç,<sup>1</sup>/<sub>2</sub>,<sup>3</sup>/<sub>4</sub>,« ,Ü, ·□B,È, ““o~^—  
¿,É,Í□A‘—¿□^Žè□”—¿, ¢ŠÜ,Ü,ê,Ä,ç,Ü, ·□B□Ú,μ,,ÍDISC1:\P\_AND\_A\  
ORDER.JPN,đ, ““Ç,Ý, ,<sup>3</sup>/<sub>4</sub>,<sup>3</sup>,ç□B



# InfoCourier



Žû~^fffbfçfnfgfš@DISC1:\P\_AND\_A\INFO



# ŠT-v

InfoCourier Aî•ñ"z•z, Ì-□'zE`, Ö, æ, x, ±  
 , »□BInfoCourier, ÍHTMLfRf"fpfCf%, Å, ·□B, ±, ê, É, æ, è□A, , È, ½, ¢"z•z, µ,  
 ½, ç, Æ□l, †, é, ·, x, Ä, Ì□î•ñ, É□ô-û, ³, è, ½frf...□[fA□[□ifuf  
 %fEfU□j, ðfpfbfN, É, µ, Ä, Ð, Æ, Å, ÌfRf"fpfNfg, ÈfpfbfP□[fW□C, µ, ©, à' ~□ìE  
 ftfŠ□[, ÌWindows3.1□A95/  
 NT, Å"®□ì, ·, éWindows, Ì.exeftf@fCf<, ð□ì□-, ·, é, ±  
 , Æ, ¢, Å, «, Ü, ·□B, » , ê, ¢fJf^f□f0, Å, , ê□Cf}fj f...fAf<, Å, , ê□C"džqžGž□, »  
 , Ì'¼, Å, , Á, Ä, à□C, » , ê, ðžó, ~žæ, Á, Å%{—  
 , ·, éft□[fU□[ , É, Í, » , Ì.exeftf@fCf<^Èã, Ìfvf□f0f%f€ , Í•K-v, , è, Ü, ¹, ñ  
 □B



□Ú, µ, , Í□ADISC1:\P\_AND\_A\INFO\README.JPN, ð, " "ç, Ý, , ¾, ³, ç□B

□@, ±, Ìfvf□f0f%f€ , ÍP&A, ¢"ú-{ 'ã-□"X, Æ, È, Á, Ä, ç, Ü, ·□B-{ž□□uCD-  
 ROM, Ìžg, ç•û□v, Ì□Å□Ify□[fW, É, , è, Ü, ·"o~^—pž†, É<L"ü, Ì□ã□AFAX□A

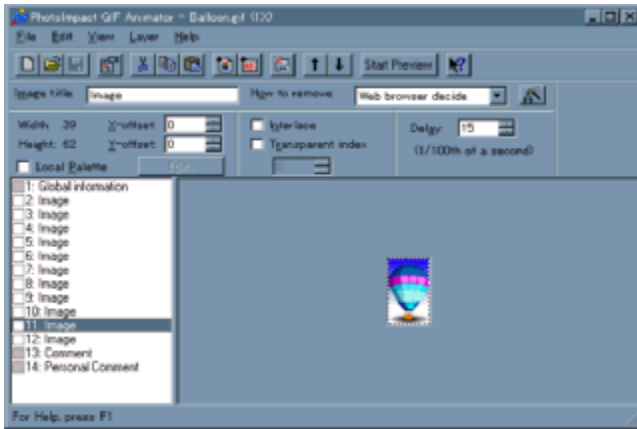
ŽèŽ†□A“d~b -”, Í NIFTY-Serve , Ì“džqf□□[f<, É, Ä•Ô‘-, -  
, <sup>3</sup>/<sub>4</sub>, <sup>3</sup>, ç□B□U, è□ž, ÝŠm”FŽŸ‘æ-X’-, <sup>3</sup>, <sup>1</sup>, Ä, ç, <sup>1</sup>/<sub>2</sub>, <sup>3</sup>/<sub>4</sub>, «, Ü, ·□B, È, “o~^—  
¿, É, Í□A’—¿□^Žè□”—¿, ŠÜ, Ü, ê, Ä, ç, Û, ·□B□Ú, μ, , ÍDISC1:\P\_AND\_A\  
ORDER.JPN, ð, “Ç, Ý, , <sup>3</sup>/<sub>4</sub>, <sup>3</sup>, ç□B



## PhotoImpact GIF Animator v1.0



Žû~^fffbfçfnfgfš@DISC1:\P\_AND\_A\GIFANIM



ŠT-v

WEBfy[]fW-pfCf[]fW[]i[]-,É[]Å“K,İfc[]f<,ªPhotoImpact GIF Animator,Å,·[]Bf{f^f“[]A-f-Í“I,È“wEifCf[]fW[]A-Ú,ð,Đ,-fofi[][,È,Ç,ªŠÈ’P,É[]i[]-,Å,«[]AfCf[]fW,İ[]Ø,èžæ,è,âfTfCfY•İ[]X[]A“š-¾»[]AfJf%[]fpfçbfg,İfCf“fffbfNfx,àšÈ’P[]BfCf[]fW[]Å“K»»fc[]f<,İ[]APhotoImpact GIF/JPEG SmartSaver,Æ•¹-p,·,è,İ[]A, ,È,½,İWEBfy[]fW,Íš®àø,Å,·[]B



[]Ú,µ, ,Í[]ADISC1:\P\_AND\_A\GIFANIM\README.JPN,ð,““Ç,Ý,¾,¾,ç[]B

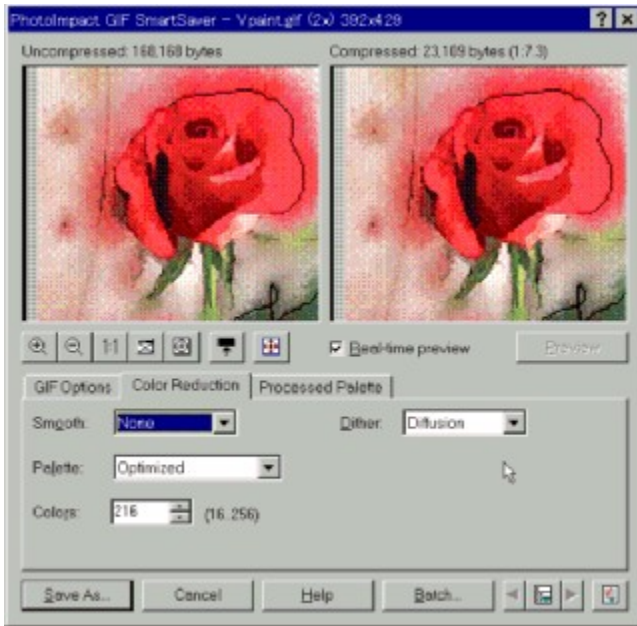
[]@,±,İfvf[]f0f%fe,ÍP&A,ª“ú-{’ã-[]“X,Æ,È,Á,Ä,ç,Ü,·[]B-{ž[]uCD-ROM,İžg,ç•ú[]v,İ[]Å[]Ify[]fW,É, ,è,Ü,·“o~^~pžt,É<L“ü,İ[]ã[]AFAX[]Ažèžt[]A“d~b -”,Í NIFTY-Serve ,İ“džqf[]f<,É,Å•Ô’-, -,¾,¾,¾,ç[]B[]U,è[]ž,Ýšm“FžÝ’æ-X’-,¾,¹,Å,ç,½,¾,¾,«,Ü,·[]B,È,““o~^~ž,É,Í[]A’—ž[]^žè[]”-ž,ªšÜ,Ü,è,Ä,ç,Ü,·[]B[]Ú,µ, ,ÍDISC1:\P\_AND\_A\ORDER.JPN,ð,““Ç,Ý,¾,¾,ç[]B



## PhotoImpact GIF/JPEG SmartSaver v1.1



Žû~^fffbf@fnfgfš@DISC1:\P\_AND\_A\SMART



ŠT-v

@PhotoImpact GIF/JPEG SmartSaver, đŽg, ¢, ÆWEB, ÉŽg-  
p, ., éfcf [fw, ÌÅ“K%» , ¢, à, Á, Æ, à ‘ , -  
, ĀŠÈ’P, É, Ā, «, Ü, ·Bfcf [fw, Ìfvf@frf...  
[ [Cftf@fcf< fTfcfY, ÌŠm”F, ¢í, É, Ā, «, é, Ì, ĀAfCf [fw, đ•Û’¶, ., é’O, É  
, » , Ìftf@fcf< , ¢, Ç, è, ®, ç, ¢, Ì’ã, «, ¢, É, È, é, ©A, Ç, ñ, ÈŠ’ , ¶, É, È, é, ©, Æ, ¢  
, Ā, ½, ±  
, Æ, đ•Šm, ÉŠm”F, Ā, «, Ü, ·BŸ’è, đ•ÏX, ., è, ÌA, » , è, É, Ā, è, ĀŽ©“®“I, Éft  
f@fcf< fTfcfY, Æfvf@frf... [ ‘t, Ìæ-  
É, àXV, ¢, è, Ü, ·B, » , µ, Āftf@fcf< , ÌftfcfY, ÆæŽ; , Ìfof%f“fX, ¢, ç, ¢, ¢  
, Ç, Æ, è, ½, Æ, «, ÉV, µ, ¢fcf [fw, Æ, µ, Ā•Û’¶, Ā, «, Ü, ·BPhotoImpact  
GIF/JPEG  
SmartSaver, Ìfcf“f^ [ftfF [fX, ÍŠÈ’P, Ā³Šm, ĀAf\_fcfi~fbfn, ÉWYSIWY  
Gfvf@frf... [ , ¢, Ā, «, Ü, ·B’S•”, Đ, Á, -

, é, ß, Ä, l, |, é, Æ, AWEBfCf, [fW, Ì, Å, "K», Ì-â 'è, Í, ±, ê, Å, Î, Á, ¿, è  
%ðÆ^, μ, Ü, ·, B



Ú, μ, , Í, ADISC1:\P\_AND\_A\SMART\README.JPN, ð, "Ç, Ý, , ¾, ³, ç, B

@, ±, Ì, f, v, f, f, 0, f, %f, €, Í, P&A, á, "ú- { ' ä- "X, Æ, È, Á, Ä, ç, Ü, ·, B- { Ž, u, CD-  
ROM, Ì, Ž, g, ç, •, û, v, Ì, Å, I, f, y, [f, W, É, , è, Ü, ·, "o~^ -p, Ž, t, É, <L, "ü, Ì, ã, AFAX, A  
Ž, è, Ž, t, A, "d~b -", Í, NIFTY-Serve , Ì, "d, Ž, q, f, [f, <, É, Ä, •, Ô, ' -, -  
, ¾, ³, ç, B, U, è, ž, Ý, Š, m, "F, Ž, Ÿ, 'æ, X, ' -, ³, ¹, Ä, ç, ½, ¾, «, Ü, ·, B, È, "o~^ -  
¿, É, Í, A, ' —¿, ^, Ž, è, " —¿, á, Š, Ü, Ü, ê, Ä, ç, Ü, ·, B, Ú, μ, , Í, DISC1:\P\_AND\_A\  
ORDER.JPN, ð, "Ç, Ý, , ¾, ³, ç, B





@WinZip v6.2 (Nico Mak)

16bit   
32bit



Žû~^ffBf@fnfgfŠ@DISC1:\P\_AND\_A\WZ62\_16(16bit) \  
WZ62\_32(32bit)



ŠT-v

,±,İfvf fof%f€  
,Í'ã•\“I,È^3 kftf@fCf<,Å, ,ézipftf@fCf<,ð“WŠJ A^3 k,.,é,½,ß,İfc  
[f<,Å,·B,±,İ16-bit”Å,Æ32-bit”Å, a-p^0, 3,ê,Ä,ç,Û,·B,“Žg,ç  
,İWindows,É%ï,í, 1,Ä, “Žg,ç,,¾, 3,çB



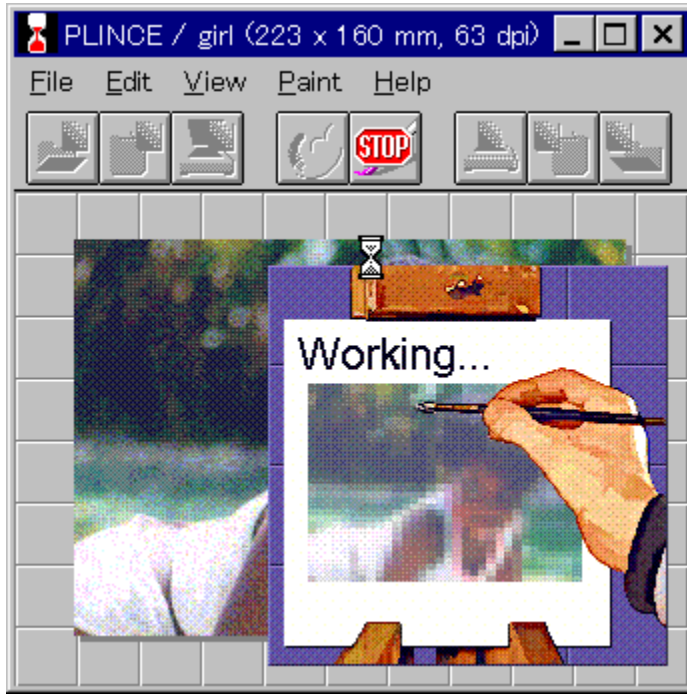
Ú,μ,,ÍADISC1:\P AND A\WZ62\_16\README.JPN(16bit)ADISC1:\  
P AND A\WZ62\_32\README.JPN(32bit),ð,“Ç,Ý,,¾, 3,çB

@,±,İfvf fof%f€,ÍP&A, a“ú-{‘ã-“X,Æ,È,Á,Ä,ç,Û,·B-{Ž uCD-  
ROM,İŽg,ç•úv,İÅ Ify [fW,É, ,è,Û,·“o~^~pŽ†,É<L“ü,İã AFAX A  
ŽèŽ†A“d~b -”,Í NIFTY-Serve ,İ“dŽqf [f<,É,Ä•Ô’-, -  
,¾, 3,çB U,èž,ÝŠm”FŽÝ’æ-X’-, 3, 1,Ä,ç,½,¾,«,Û,·B,È, “o~^~  
ž,É,ÍA’—;žè”-ž, aŠÜ,Û,ê,Ä,ç,Û,·B Ú,μ,,ÍDISC1:\P AND A\  
ORDER.JPN,ð,“Ç,Ý,,¾, 3,çB

 Virtual Painter ver2.30J ("~'°□,□j



 Žû~^fffbf@fnfgfš@DISC:\P\_AND\_A\VP230J



 ŠT-v

□@f0f%ftfBfbfnftf@fCf<, ì•İŠ·fc□[f<,Æ,μ,Ä□l<C, Ì□, ,çfvf□f0f  
%f€□B□×, ©, fo□[fwf#f" fAfbfv, ð, ·, é, ±, Æ, Å-L-  
¼□BJPEG, ð, Í, ¶, ß, Æ, μ, ÄPCX□AGIF□ATIFF□ABMP□AWPG□AMSP□APFS  
, Ù, ©□#E v20Ží-p, à, Ìf|fsf...f%□[ , Èftf@fCf<ftfH□[f}fbfg, ðfTf|  
□[fg, μ, Ä, ç, Ü, ·□B, à, ÿ, è, ñ, ±  
, é, ç, ÌftfH□[f}fbfgŠÖ, Ì•İŠ·□A, ", æ, Ñ, É^ó□ü□A•İE`□Aftfšfbfv□A  
%ñ" ]□Afnf□fbfv□AfJf%□[ ' ²□@™□Afof%ftfBfbfnfc□[f<,Æ,μ,ÄŽ□, Å, Ä, ç  
, é, Æ, Æ, Ä, à•Ö-~ , Èf\ftfg, Æ, ç, |, é, Å, μ, å, ¨□B, Ü, ½PhotoCD, ÌfTf|  
□[fg□A2□`256□F, Ü, Å, Ì%æ'æ, ðEXEftf@fCf<□iŽ©"®\  
Ž!□j, É•İŠ·, Å, «, é, Æ, ç, ¨, Ì, à"Á•M, É'l, μ, Ü, ·□B, Ü, ½FLI/  
FLC□AAVI, È, Ç, Ì"®æftf@fCf<, ^μ, |, é, ±, Æ, à-f-  
Í, Ì, Ð, Æ, Å□Bftf@fCf<, ©, ç1fRf}

, ðžæ, è□o, μ, Ä□A '¼, ÌftfH□[f}fbfg, É•İŠ·, ·, é, ±, Æ, ¾, Á, Ä%Ä" \, Å, ·□B



□Ú, μ, , Í□ADISC:\P\_AND\_A\VP230J\README.JPN, ð, "“Ç, Ý, , ¾, ¾, ç□B

□@, ±, Ìfvf□f0f%f€ , ÍP&A, ¢“ú—{‘ã—□“X, Æ, È, Á, Ä, ç, Ü, ·□B—{Ž□□uCD-  
ROM, ÌŽg, ç•û□v, Ì□Å□Ify□[fW, É, , è, Ü, ·“o~^—pŽ†, É<L“ü, Ì□ã□AFAX□A  
ŽèŽ†□A“d~b —”, Í NIFTY-Serve , Ì“dŽqf□□[f<, É, Ä•Ô‘—, -  
, ¾, ¾, ç□B□U, è□ž, ÝŠm”FŽŸ‘æ—X‘—, ¾, ¾, Ä, ç, ½, ¾, «, Ü, ·□B, È, “o~^—  
¿, É, Í□A‘—¿□^Žè□”—¿, ¢ŠÜ, Ü, ê, Ä, ç, Ü, ·□B□Ú, μ, , ÍDISC1:\P\_AND\_A\  
ORDER.JPN, ð, "“Ç, Ý, , ¾, ¾, ç□B

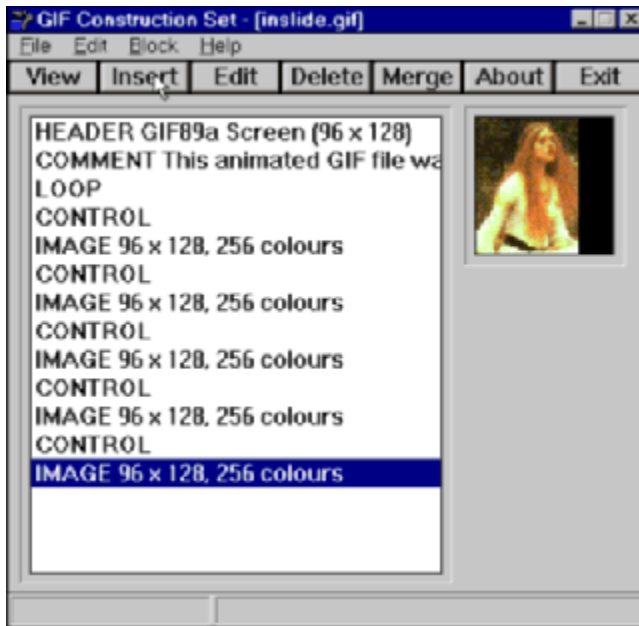


# GIF Construction Set for Windows 1.0N (Alchemy Mindworks)

16bit   
32bit



Žû~^ffjBf@fnfgfŠ@DISC1:\P\_AND\_A\GIFCON16(16bit) \ GIFCON32(32bit)



## ŠT-v

• i", Ìfuf[]fbfn[]ifCf[] [fwfuf[]fbfn[]AfefLfxfgfuf[]fbfn[]Afrf[]f"fgfuf[] fbfn[]Afrf"fgf[] [f<fuf[]fbfn[]j, ðž, ÂGIFftf@fCf<, ðì, ·, é, ±, Æ, ¢, Å, «, éfc[] [f<, Å, ·B

æ@“Á'¥

- \* “§-¾, ÈGIFftf@fCf<, Ìì-
- \* frf[]f"fgfuf[]fbfn, Ì'Ç%ÁA•òW[]Aíæ
- \* fCf[] [fw, Éfvf@[] [f"fefLfxfgfuf[]fbfn, Æ, µ, Äfmf"ffjBfxfgf %fnfefBfufefLfx fg, ð'Ç%Á
- \* • i", ÌfCf[] [fw, ðž, ÂGIFftf@fCf<, âŠÈ'P, ÈfAjf[] [fvf+f", Ìì-
- \* GIF, Ìfrf...[] [f, Æ, µ, Ä, Ì<@"\

æ@V,µ, 'Ç%Á,³,ê,½<@"\  
šfCfhfpfEfbfg,İGIFftf@fCf<ı256F^Èã'Î%žj,ðì¬,Å,«,éI  
šAVIftf@fCf<,ðGIFftf@fCf<,É•İŠ·,Å,«,éB



Ú,µ,,ÍADISC1:\P\_AND\_A\GIFCON16\README.JPN(16bit)ADISC1:\  
P\_AND\_A\GIFCON32\README.JPN(32bit),ð,“Ç,Ý,,¾,³,çB

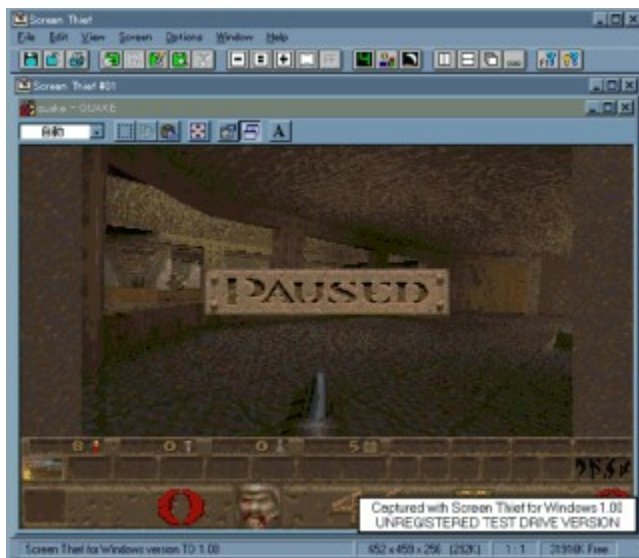
@,±,İfvfƒ0f%ƒ€,ÍP&A,ª“ú-{'ã-“X,Æ,È,Á,Ä,ç,Ü,·B-{ŽuCD-  
ROM,İŽg,ç•ûv,İÅIfy[fW,É, ,è,Ü,·“o~^~pŽ†,É<L“ü,İãAFAXA  
ŽèŽ†A“d~b -”,Í NIFTY-Serve ,İ“dŽqf[f<,É,Ä•Ô'-,-  
,¾,³,çBU,èž,ÝŠm”FŽŸ'æ-X'-,³,¹,Ä,ç,½,¾,«,Ü,·B,È,“o~^~  
¿,É,ÍA'—¿^Žè”-¿,ªŠÜ,Ü,ê,Ä,ç,Ü,·BU,µ,,ÍDISC1:\P\_AND\_A\  
ORDER.JPN,ð,“Ç,Ý,,¾,³,çB



@Screen Thief 95 (Nildram Software)



Žû~^fffbfçfnfgfš@DISC1:\P\_AND\_A\STW100



ŠT-v

Å<ß, íA F X, Èæ'æf [f\_ [ , âæ'æfLffvf`fff\ftfg, a, , é, a AfXfnfš  
 [f", ðžæ, èž, à, x, Æžv, Á, ½ê#A Åž~æ-  
 Ê, Ìê# , íXf€ [fY, Éžæ, èž, ß, é, à, Ì, a '½, çB, µ, ©, µ AfQ [f€, Ì-l, Éæ-  
 Ê, a • Ì, í, é, à, ÌA "Á, É Å<ß, Ì-l, ÉfQ [f€žg, a, ©, È, è, Ìf f, fš, ð•K-  
 v, Æ, . , é, à, Ì, ÍA, È, ©, È, çLffvf`ff, Å, «, évf fOf% f€, a, È, ç  
 , Ì, a E»ó, Å, , Á, ½B, » , ñ, È't, ÅA-B^ê, Æ, à, ç, |, é, Û, ÇA "®  
 æ, ðŠ®àø, Éžæ, èž, ß, é, ±, Æ, a, Å, «A o" ÅŠE, Å, à, » , Ì-¼, ð'm, ç, ê, Ä, ç  
 , é, Ì, a Screen Thief, ¾B, ±, ê, Í, » , ÌWindows" Å, ÅADOS" Å, É-ò, ç, , æ, ç  
 , Å, «, ¾B, ±, ê, ÅfQ [f] [ , Éžæ, Á, Ä, àA V, µ, çfQ [f€, ðÐ  
 ðî, . , éê#AZÀÛ, ÌfQ [f€æ-Ê"™, ðAftf@fCf< , É-ž, Æ, µ, Ä©, ¹, é, ±, Æ, a  
 æ" \ , Æ, È, éB



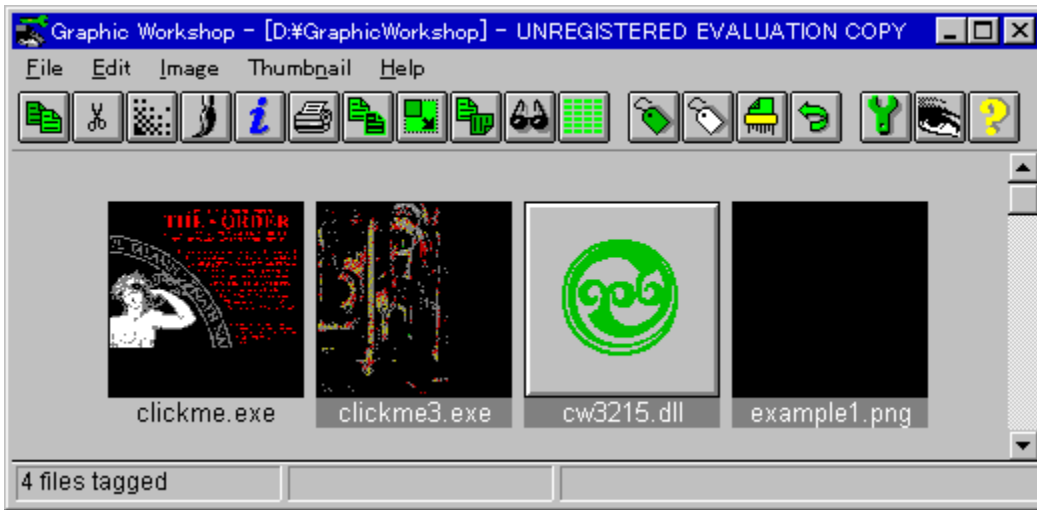


# Graphic Workshop Version1.1w (Alchemy Mindworks)

16bit   
32bit



Žû~^ffBf@fnfgfŠ@DISC1:\P\_AND\_A\GWS11W(16bit) \ GWS11W95(32bit)



## ŠT-v

f0f%ftfBfbfNftf@fCf<, Ì•İŠ·fc[f<,Æ,μ,Äl<C,Ì, ,çfvf[]f0f  
%f€[]B[]x,©,fo[][fwf#f"fafbfv,ð,·,é,±,Æ,Å-L-¼[]BJPEG,ðŽn,ß,Æ,μ,ÄPCX,  
GIF, TIFF, BMP, WPG, MSP, PFS , Ù,©[]#èv,Q,0Ží-p,à,İf|fsf...f  
%[][ ,Èftf@fCf<ftfH[][f}fbfg,ðfTf|[][fg,μ,Ä,ç,Ü,·[]B,à,¿,è,ñ,±  
,é,ç,İftfH[][f}fbfgŠÏ,Ì•İŠ·[]A, ",æ,Ñ,É^óü[]A•İ€`[]AftfŠfbfv[]A"]  
%ñ[]AfNf[]fbfv[]AfJf%[][ ' ²[]@""™[]Af0f%ftfBfbfNfc[][f<,Æ,μ,ÄZ[],Á,Ä,ç  
,é,Æ,Æ,Ä,à•Ö-~ ,Èf\ftfg,Æ,ç  
, |,é,Å,μ,â,¤[]B,Ü,½fRf\_fbfNftfHfg,b,c,İftf|[][fg[]A2-256[]F,Ü,Å,Ì  
%æ'æ,ðEXEftf@fCf<[]iŽ@"®\Ž![]j,É•İŠ·,Å,«,é,Æ,ç,¤  
, Ì,à"Á•M,É'l,μ,Ü,·[]B,Ü,½FLI/FLC[]AAVI,È,Ç,İ"®æftf@fCf<, ^μ, |,é,±  
,Æ,à-f-Í,Ì,Đ,Æ,Å[]Bftf@fCf<,©,ç1fRf}  
,ðŽæ,è[]o,μ,Ä[]A'¼,İftfH[][f}fbfg,É•İŠ·,·,é,±,Æ,¾,Á,Ä%Ä"\,Å,·[]B



[]Ú,μ,,Í[]ADISC1:\P\_AND\_A\GWS11W\README.JPN(16bit)[]ADISC1:\



P\_AND\_A\GWS11W95\README.JPN(32bit), ð, “Ç, Ý, , <sup>3</sup>/<sub>4</sub>, <sup>3</sup>, ç□B

□@, ±, Ìfvf□f0f%fc, ÍP&A, a“ú-{' ä-□“X, Æ, È, Á, Ä, ç, Ü, ·□B-{Ž□□uCD-  
ROM, ÌŽg, ç•û□v, Ì□Å□Ify□[fW, É, , è, Ü, ·“o~^~pŽ†, É<L“ü, Ì□ã□AFAX□A  
ŽèŽ†□A“d~b -”, Í NIFTY-Serve , Ì“dŽqf□□[f<, É, Ä•Ô‘-, -  
, <sup>3</sup>/<sub>4</sub>, <sup>3</sup>, ç□B□U, è□ž, ÝŠm“FŽŸ‘æ-X‘-, <sup>3</sup>, <sup>1</sup>, Ä, ç, <sup>1</sup>/<sub>2</sub>, <sup>3</sup>/<sub>4</sub>, «, Ü, ·□B, È, ““o~^~  
¿, É, Í□A‘—¿□^Žè□”-¿, aŠÜ, Ü, ê, Ä, ç, Ü, ·□B□Ú, μ, , ÍDISC1:\P\_AND\_A\  
ORDER.JPN, ð, “Ç, Ý, , <sup>3</sup>/<sub>4</sub>, <sup>3</sup>, ç□B



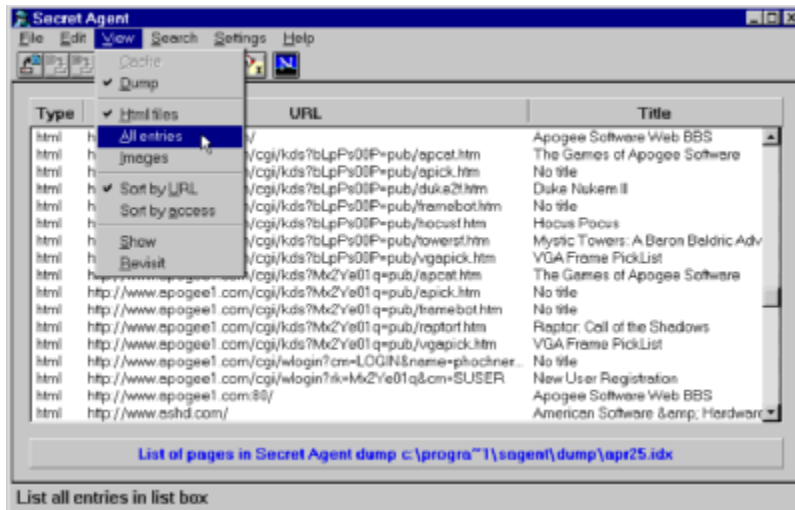
@Secret Agent v1.2(16bit"Å) v2.1(32bit"Å) (Ariel Communications)



@16bit"Å, ÌfCf"fxfg [f< @  
@32bit"Å, ÌfCf"fxfg [f< @



Žû~^fffbfçfnfgfš @DISC1:\P\_AND\_A\SA16V120(16bit"Å [j\  
SA32V201 [i32bit"Å [j



ŠT-v

fV [ fNfçfbfgfG [ fWfFf"fg, Í ANetscape navigator AIInternet Explorer-pfvf [f0f%ç, Å, ·B, , ç, ©, ¶, ß-\-ñ, µ, Ä, ", ç, ½fy [ fW, ðGrab [ižæ, èž, Ý [j<@"\, É, æ, Á, Äž©"@"I, Éf\_fEf"f [fh [B, ±, è, É, æ, Á, ÄfIftf %fCf", Åfz [fçfy [fW, ð"Ç, ñ, ¾, èAfCf"fffbfNfX, ð [i, Á, ½, è, Å, «, Ü, · [B" Ç, Ý, ½, çfz [fçfy [fW, Éçä, Å-ß, é, ±, Æ, ª, Å, «, é, Ì, Å [A^Å [S, µ, Å, ·, Ì, â, - "Ç, Ý [i, P, ±, Æ, ª, Å, «, Ü, · [B



[Ú, µ, , Í ADISC1:\P AND A\SA16V120\  
README.JPN [i16bit"Å [j ADISC1:\P AND A\SA32V201\  
README.JPN [i32bit"Å [j, ð, "Ç, Ý, , ¾, ¾, ç [B

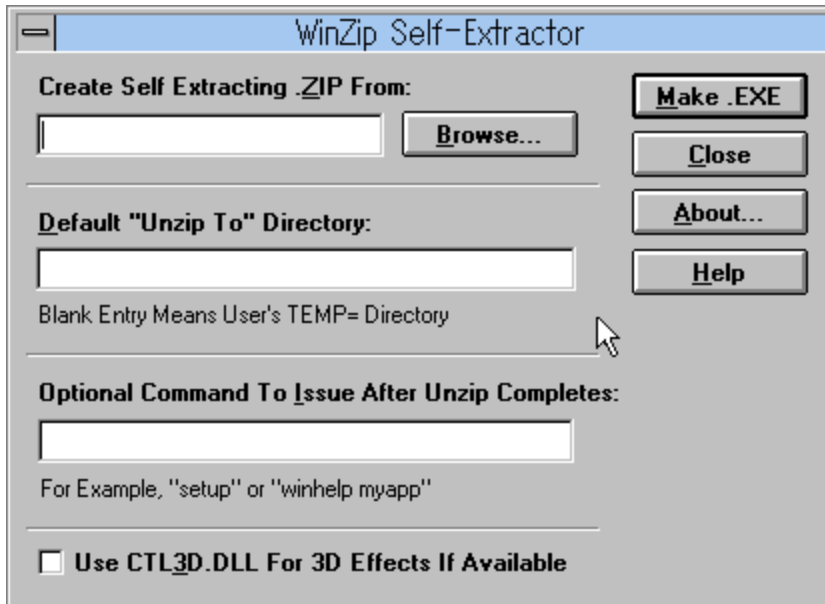
□@,±,İfvf□f0f%f€ , İP&A, ¢“ú—{ ‘ã—□“X,Æ,È,Á,Ä,ç,Ü, ·□B—{Ž□□uCD-  
ROM,İŽg,ç•û□v,İ□Å□Ify□[fW,É, ,è,Ü, ·“o~^—pŽ†,É<L“ü,İ□ã□AFAX□A  
ŽèŽ†□A“d~b —”,Í NIFTY-Serve ,İ“dŽqf□□[f<,É,Ä•Ô‘—, -  
,<sup>3</sup>/<sub>4</sub>,<sup>3</sup>,ç□B□U,è□ž,ÝŠm”FŽŸ‘æ-X‘—,<sup>3</sup>,<sup>1</sup>,Ä,ç,<sup>1</sup>/<sub>2</sub>,<sup>3</sup>/<sub>4</sub>,« ,Ü, ·□B,È, ““o~^—  
¿,É,Í□A‘—¿□^Žè□”—¿, ¢ŠÜ,Ü,ê,Ä,ç,Ü, ·□B□Ú,μ,,ÍDISC1:\P\_AND\_A\  
ORDER.JPN,đ, ““Ç,Ý, ,<sup>3</sup>/<sub>4</sub>,<sup>3</sup>,ç□B



@WinZip Self-Extractor v2.0 (Nico Mak)



Žû~^ffBfçfNfgfŠ@DISC1:\P\_AND\_A\WZIPSE20



ŠT-v

@ZIPftf@fCf<, ðŽ©È  
%ð“€È`Ž®ftf@fCf<, É, ·, éft[]fefBfŠfefB, Å, ·.BZIPÈ`Ž®, Å^³k,³, é,½ftf  
@fCf<, É, ç, » , İ, Ü, ÜŽ©ÈÈ%ð“€È`Ž®ftf@fCf<, É•İŠ·, ·, é, ±  
,Æ,ª,Å,« , éB,Ü,½%ð“€ , ·, é,Æ“`ŽŽ,Éf\ftfg,ðŽ©“®fCf“fXfg[]f<, ·, é, ±  
,Æ,ª%Å”\ , É, È, éB



□Ú,μ, , ÍADISC1:\P\_AND\_A\WZIPSE20\README.JPN, ð, “Ç,Ý, ,¾,³, çB

@, ±, İfvf[]fOf%€ , ÍP&A,ª“ú-{'ã-□X,Æ,È,Á,Ä,ç,Ü, ·.B-{Ž[]uCD-  
ROM,İŽg,ç•ú□v,İ□Å□Ify[]fW,É, , è,Ü, ·“o~^~pŽt,É<L“ü,İ□ã□AFAX□A  
ŽèŽt□A“d~b -”,Í NIFTY-Serve ,İ“dŽqf[]f<,É,Ä•Ô’-, -  
,¾,³, çB□U,è□ž,ÝŠm”FŽŸ’æ-X’-,³,¹,Ä,ç,½,¾,« ,Ü, ·.B,È, “o~^~  
ž,É,Í□A’—ž□^Žè□”-ž,ªŠÜ,Ü,è,Ä,ç,Ü, ·.B□Ú,μ, , ÍDISC1:\P\_AND\_A\

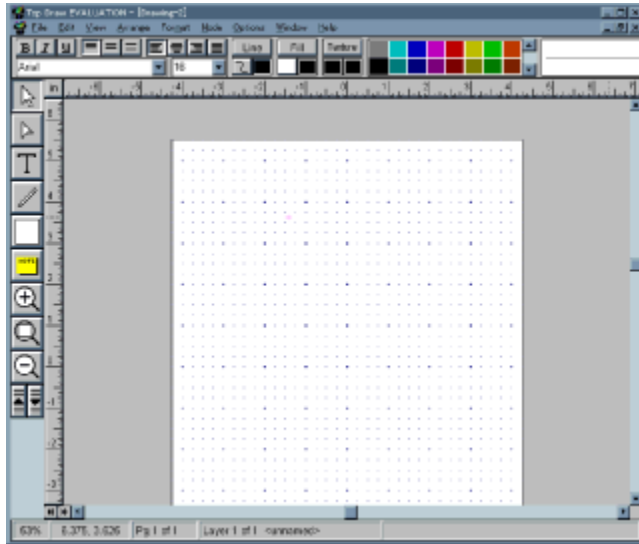
ORDER.JPN, ð, “Ç, Ý, ,  $\frac{3}{4}$ , <sup>3</sup>, ç□B



Top Draw v3.1 (Top Software)



Žû~^ffBfœfnfgfŠ@DISC:\P\_AND\_A\TOPDR31



ŠT-v

@,Æ,Ä,àŠÈ'P,ÉŽg,!,Ä,μ,©,àfpf[]ftf<[]AfxfNf^[][fx[][fX,ì,QŽŸœ³fhf[][]  
 fvf[]fOf%€[]B"Á'¥,ì,Đ,Æ,Â,ª"Y•t,ìfpfœfbfg[]B30<ß,,ì'½Ží'½-  
 l,Éœ`,ª,·,Ä,É-p^Ó,³,ê,Ä,ç,é,ì,Å[]A,±  
 ,ìœ`,ðfx[][fX,É,μ,Ä[]ì<Æ,ð[]i,ß,ê,î[]A,í,è,Æœ©  
 %h,!,ì,·,éŠG,ª'f[]l,É,àŠÈ'P,É•`,-,é[]B %Á,!,Ä[]A%æ'œ,É-  
 -,μ[]ž,ρ[]F,â•ž[]AfOf%ff[][fvf+f",ìfpf^[][f",ì'I'ð[]Af  
 %fCf"f^fCfv,àfyf"[]æ,ìœ`[]Af%fCf",ì[]æ'[,ìœ`"™,à•ì[]XŽ©-R[]B  
 []}œ`,ª,Ä,«,,ª,Ä,½,ç,±,è,ìfRfs[][[]A%ñ"][]AœXŽî[]A  
 %E'μ,![]A[]¶'μ,![]AfZf"f^[][fŠf"fO,àŽv,ç  
 ,ì,Ü,Ü[]B94"N"x,ìfvfFfAfEfFfAfCf"f\_fXfgfŠÜ,ÅfxfXfgfOf  
 %ftfBfbfNfAfvfŠfP[][fvf+f"[]Ü,ðžö[]Ü[]BfvfFfAfEfFfA"Å,Å,à<@"\  
 ,ì100[]"Žg,!,Ü,·[]i,½,¾,μ^ó[]üžž,É[]ufVfFfAfEfFfA"Å,Å[]ì[]-[]v,Æ"ü,è,Ü,  
 ·[]j[]B



Ú, μ, , Í ADISC:\P\_AND\_A\TOPDR31\README.JPN, ð, “Ç, Ý, , <sup>3</sup>/<sub>4</sub>, <sup>3</sup>, ç B

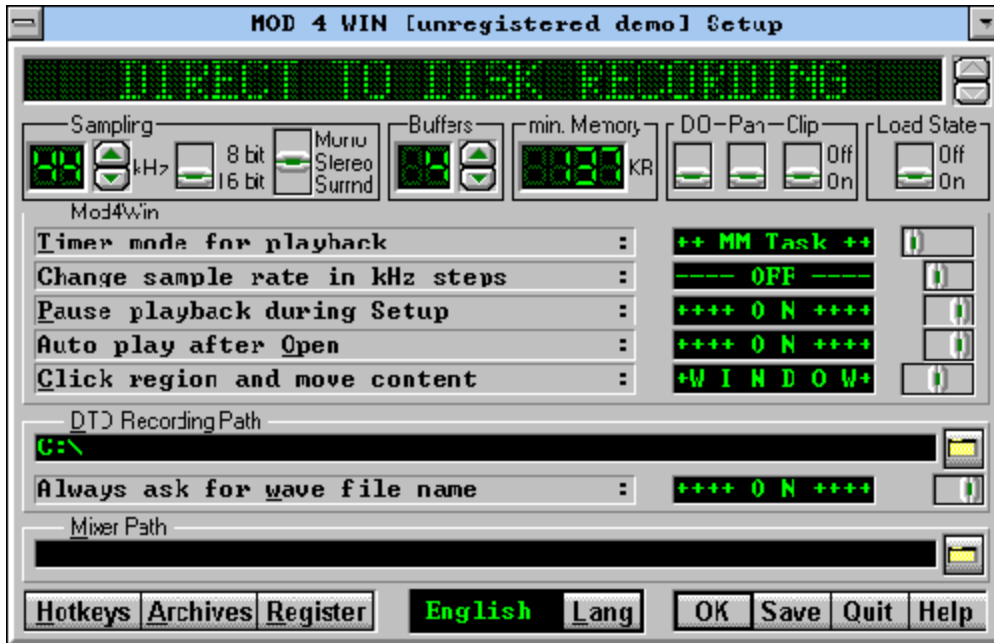
@, ±, Ì fvf fOf% f€ , ÍP&A, ð “ú- { ‘ ä- “X, Æ, È, Á, Ä, ç, Ü, · B- { Ž uCD-  
ROM, Ì Žg, ç • û v, Ì Å Ify [ fW, É, , è, Ü, · “ o ~ ^ - p Ž †, É < L “ ü, Ì ã AFAX A  
Ž è Ž † A “ d ~ b - ”, Í NIFTY-Serve , Ì “ d Ž q f [ f < , É, Ä • Ô ‘ - , -  
, <sup>3</sup>/<sub>4</sub>, <sup>3</sup>, ç B U, è ž, Ý Š m “ F Ž Ÿ ‘ æ - X ‘ - , <sup>3</sup>, <sup>1</sup>, Ä, ç, <sup>1</sup>/<sub>2</sub>, <sup>3</sup>/<sub>4</sub>, «, Ü, · B, È, “ o ~ ^ -  
ž, É, Í A ‘ — ž ^ Ž è “ — ž, ð Š Ü, Ü, è, Ä, ç, Ü, · B Ú, μ, , Í DISC1:\P\_AND\_A\  
ORDER.JPN, ð, “ Ç, Ý, , <sup>3</sup>/<sub>4</sub>, <sup>3</sup>, ç B



M4Win v2.30



Žû~^fffbfçfnfgfš@DISC1:\P\_AND\_A\M4WIN230



ŠT-v

fTf|[]fg,µ,Ä,ç,éftfH[]f}fbfg,Í[]ANoiseTracker(\*.NST)[]APro-/Fast-/  
 TakeTracker(\*.MOD)[]AMod's Grave  
 (\*.WOW)[]AOkalyzer(\*.LKT)[]AScreamTracker  
 2.x(\*.STM)[]AComposer669(\*.669)[]AMultiTracker(\*.MTM)  
 ,Å[]A32f`fff`flf<,Ü,Å[]BfTfEf`fhfTf`fvf<,Í11[]`48kHz[]A8/16frfbfg,Åf  
 ,fmf%<[]EfXfefçfI,Í,à,ç,è,ñ,Ì,±,Æ[]Aftf%fEf`fh,àftf|[]fg,µ,Ä,ç  
 ,Ü,·[]BfTf`fvf%[][,Æ,µ,Ä,ì<@"\,ì'¼,É[]Afwf...  
 []fnf{fbfnfX,Æ,µ,Ä,àŽg,|[]A[]Å'å2,999çÄ,Ü,Å,ÌMODftf@fCf<,ð^è"x,É[]Ä  
 []¶,·,é,±,Æ,²,Å,«,Ü,·[]Bf~f...  
 []fwfbfnftf@fCf<[]î•ñ,àŠeŽífGftfFfnfg,Æ,Æ,à,É•\Ž|,³,è[]A•\Ž|%æ-  
 Ê,à•î[]X%Ä"\[]B,É,ç,È,ç[]-%ñ,è,Ì,«,fvf[]f0f%ç€,Å,·[]B





Ú,μ,,ÍADISC1:\P\_AND\_A\M4WIN230\README.JPN,đ,“Ç,Ý,,<sup>3</sup>/<sub>4</sub>,<sup>3</sup>,çB



Ú,μ,,ÍADISC1:\P\_AND\_A\GIFCON16\README.JPN(16bit)ADISC1:\P\_AND\_A\GIFCON32\README.JPN(32bit),đ,“Ç,Ý,,<sup>3</sup>/<sub>4</sub>,<sup>3</sup>,çB

@,±,İfvf fOf% f€ ,ÍP&A,ª“ú–{‘ã–X,Æ,È,Á,Ä,ç,Ü,·B–{ŽuCD-ROM,İŽg,ç•ûv,İÅIfy[fW,É,è,Ü,·“o~^–pŽ†,É<L“ü,İãAFAXA ŽèŽ†A“d~b –”,Í NIFTY-Serve ,İ“dŽqf[f<,É,Ä•Ô’–,–<sup>3</sup>/<sub>4</sub>,<sup>3</sup>,çB U,èž,ÝŠm”FŽŸ’æ–X’–,<sup>3</sup>,<sup>1</sup>,Ä,ç,<sup>1</sup>/<sub>2</sub>,<sup>3</sup>/<sub>4</sub>,«,Ü,·B,È,“o~^–ž,É,ÍA’—ž^Žè”–ž,ªŠÜ,Ü,ê,Ä,ç,Ü,·B Ú,μ,,ÍDISC1:\P\_AND\_A\ORDER.JPN,đ,“Ç,Ý,,<sup>3</sup>/<sub>4</sub>,<sup>3</sup>,çB



