

NewPage f\fbfh13001

“K—p

TQuickReport

□é☒¾

procedure NewPage

NewPage fCxf“fg,Í☒f|□[fg,ì☒€”ö’t,ÉfCxf“fgfnf“fhf%, ©,ç☒Ä,Ñ□o,¹,Ü,·□BNewPage
fCxf“fg,Í☒»□Y,Ífof“fh,³^ó□ü,³,ê,½☒ä,Å%üfy□[fW,ð□s,ç
,Ü,·□Bfy□[fWfwfbf_□[,Æfy□[fWftfbf^□[,í□³,μ,^ó□ü,³,ê,Ü,·□B

QuickReport for Delphi13002

QuickReport fo [fWf] 1.0 Copyright (c) 1996 QSD AS

Borland Delphi —p“ [fEf] [fg] ì [f] Šf... [fVf] QuickReport ,Ö,æ,«,±,»!

fRf“f| [f] [f] fg.ìŠT—v

QSD AS ,É,Â,ç,Ä (~A— [•] û-@)

fefNjfff<fTf [fg

QSD AS ,É,Â,ç,Ä13003

QSD AS ,í Delphi ,É,æ,éŠj” ,É“Á%»» ,μ,½fmf<fEjF[] ,lf\ftfgfEjFfAŠj”%öiŽĐ,Å,·□BQSD AS
,Å,í□CQuickReport ,ìŠj” ,É%»Á,í,ÄŽó’ö<Æ-±, ” ,æ,Ñ’¼,ì Delphi —pfAfhjlf” ,ìŠé%»æ,ð,ç,-
,Å,©□i,ß,Ä,ç,Ü,·□B,²Žç-â,ª, ,è,Ü,μ,½,ç, ”<CÆy,É, ”-â,ç□‡,í,¹,,¾,³,ç□B

%»»L,ì•û-@,Å,²~A—□,ç,½,¾, ”,Ü,·□B

World Wide Web <http://www.qsd.no>

fCf“f^□[f]fbjgjf□□[f< support@qsd.no

CompuServe 101372,3471

ftj@fNfVf~fŠ +47 22 41 74 91

—X’— QSD AS

Radhusgaten 9

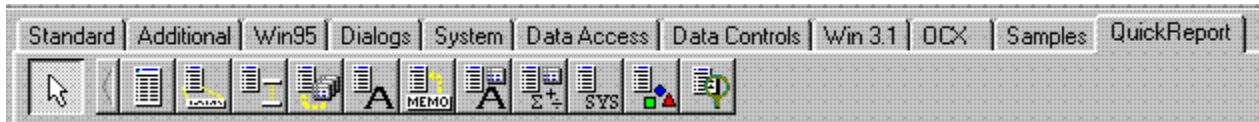
N-0151 Oslo

Norway

QuickReport13004

Version 0.95c

QuickReport fRf“f|[]f|f“fg,ÌŠT—v13005



%oÅŽ<fRf“f|[]f|f“fg

- TQuickReport ŠefĀf|[]fg,đ’S”É“l,É[]\$Āä,·,é[]ufRf“fgf[]f%o[]v,Å,·[]B,±,ÌfRf“f|[]f|f“fg,đftfH[]f€,É 1 ,Å”z’u,·,é,Ì[]CftfH[]f€,đfĀf|[]fg,É·İ[]X,·,é,±,Æ,³,Å,«,Ü,·[]B
- TQRBand QuickReport ,Ì[]CQRBand ,É”z’u,³,é,é·;[]” ,Ì^ó[]ü%oÅ”\fRf“f|[]f|f“fg,©,ç\[]—,³,é,Ü,·[]B
- TQRLabel fĀf|[]fg,ÉfefLfXfg,đ^ó[]ü,μ,Ü,·[]B
- TQRDBText (f[]f,ftfB[]f<fh,ašÜ,p) ff[]f^fx[]fXftfB[]f<fh,đ^ó[]ü,μ,Ü,·[]B
- TQRDetailLink , ,ç,ä,éŽí—p,Ìf}fXf^[]fŠf“fNfĀf|[]fg,đ[]—,·,é,½,ß,ÉŽg,ç,Ü,·[]B
- TQRMemo ·;[]”[]s,É“n,éfefLfXfg,đ^ó[]ü,μ,Ü,·[]B
- TQRShape ,³,Ü,´,Ü,É[]}Ā` ,đ^ó[]ü,μ,Ü,·[]B
- TQRDBCalc ff[]f^fx[]fXftfB[]f<fh,đŽg,Á,½ĀvŽZ,đ[]s,ç,Ü,·[]B
- TQRPreview f[]fXf^fĀfvfĀfref...[]ftfH[]f€,đ[]—,·,é,½,ß,ÉŽg,ç,Ü,·[]B
- TQRGroup ff[]f^fOf<[]fv,đ[]—,·,é,½,ß,ÉŽg,ç,Ü,·[]B
- TQRSysData fVfXfefĀff[]f^ ,đ^ó[]ü,μ,Ü,·[]B

,» ,l’¼,Ìf|fufWfFfNfg,ÆfRf“f|[]f|f“fg

- TQRPrinter QRPrinter ,l’Á·É,É<@”\,đŽ[] ,Á’áfĀfxf<,ÌvfŠf“f^f|fufWfFfNfg,Å,·[]B
- TQRCustomControl QRCustomControl ,l’ó[]ü%oÅ”\,É QuickReport fRf“f|[]f|f“fg,ÌŠi—{fNf%ofX,Å,·[]B

TQuickReport fRf“f|[]f|f“fg13006

fvf[]fpfefB fCxf“fg f[]\fbfh

ftfjfbfg

QuickRep

□à-¾

TQuickReport ,í^óü,Æff[]f^[]^—[],ì,·,×,Ä,ì<@“\,ð^μ,xf[]fCf“fRf“f|[]f|f“fg,Å,·□BTQuickReport
fRf“f|[]f|f“fg,íftfH[]f€,ð QuickReport ,É•İŠ·,·,é,½,ß,É•K—v,É,È,è,Ü,·□B^ê“Ê“l,É,í□CŽg—
p,·,éff[]f^,ð DataSource fvfpfefB,É□Ú’±,μ□CftfH[]f€,É QRBands ,ð,ç,-
,Ä,©”z’u,μ,Ä□C,»,\fof“fh□ã,É^óü%oÂ“\fRf“fgf[]f<,ð”z’u,μ,Ü,·□B□ÅÆä,É Preview f[]\
fbfh,Ü,½,í Print f[]fbfh,ðÆÄ,Ñ□o,μ,ÄfÆf[]f<,ð□o—í,μ,Ü,·□B

ColumnMarginInches **fvf** **fpfefB13007**

"K-p

TQuickReport

é **¾**

property LeftMarginInches : Longint

• ; " — ñ ('i'g) fCef|[[fg, ì — ñ Š Ô, É, Æ, é f X f y [[f X, Å, · B ' l, í 1/10 fCf" f` ' P ^ Ê, Å Ž w ' è, μ, Ü, · B

TQRBand fRf“f|[]f|f“fg13008

fvf[]fpfefB fCxf“fg

ftfjfbfg

QuickRep

□à-¾

fCEf|[]fg,đŸCEv,·,é,Æ,«,É,Í□C%½Ží—p,©,ì QRBand ,đòì□→,μ□C,»,ì□ã,É QuickReport ,ì
%oÂŽ<fRf“fgf[]f<,đ”z’u,μ,Ü,·□B□Ú□×fof“fh□Cfy[]fWfwfbf_[]fof“fh□Cfy[]fWftfbf^[]fof“fh,É,
Ç□C,³,Ü,´,Ü,ÈŽí—p,ìfof“fh,ª, ,è,Ü,·□Bfof“fh,ìŽí—
p,É,æ,Á,ĂŽ©“®“l,É^ó□ü,³,ê,é,à,ì,Æ□CQRDetailLink fRf“f|[]f|f“fg,Ü,½,Í QRGroup fRf“f|
[]f|f“fg,É□Ú’±,μ,È,ç,Æ^ó□ü,³,ê,É,ç,à,ì,ª, ,è,Ü,·□B,±,ê,É,Á,ç,Ă,Í BandType fvf[]fpfefB ,Å□Ú,μ,-
□à-¾,μ,Ă,ç,Ü,·□B

TQRLabel fRf“f|□[f|f“fg13009

fvf□fpfefB fCxf“fg

ftfjfbfg

QuickRep

□à-¾

QRLabel fRf“f|□[f|f“fg,Í—ñfwfbf_□[É,Ç,ìfefLjXfg,ðfÆf|□[fg□ã,É•\Ž!,·,é,½,ß,ÉŽg,ç,Ü,·□BfÆf|
□[fg,ì□€”ò†,Í,Ç,ìfCxf“fg,©,ç,Å,à Caption
fvf□fpfefB,ð•í□X,Å,«,Ü,·□Bff□[f^ftfB□[f·fh,©,çŽæ,è□o,μ,½fefLjXfg,ð QRDBText fRf“f|
□[f|f“fg,ðŽg,ç,Ü,·□B

,Ü,½ QRLabel fRf“f|□[f|f“fg,É,Í□QRCustomControl fRf“f|
□[f|f“fg,Æ“~ ,ñfvf□fpfefB,ª,·,x,Ä, ,è,Ü,·□B

TQRDBText fRf“f|□[lfj“fg13010

fvf□fpfefB fCxf“fg

ftfjfbfg

QuickRep

□à-¾

,±,lfRf“f|□[lfj“fg,Íff□[f^fZfbfg,ÌftfB□[f<fh,ð•\Ž|,.,é,½,ß,ÉŽg,ç,Ü,·□BDBText fRf“f|
□[lfj“fg,Æ,æ,Ž—,½“-
,«,ð,μ,Ü,·□Bff□[f^ftfB□[f<fh,ªf□f,ftfB□[f<fh,Ìê□#□C□Ú□xfof“fh,Íf□f,,Ì,.,x,Ä,ì□s,ª•\
Ž|,³,ê,é□,,³,Ü,Å□L,ª,è,Ü,·□B

TQRMemo fRf“f|□[flf“fg13011

fvf□fpfefB

ftfjfbfg

QuickRep

□à-¾

TQRMemo fRf“f|□[flf“fg,í• i□”□s,lfefLfXfg,đ^ó□ü,·,é,½,ß,ÉŽg,ç,Ü,·□B

TQRShape fRf“f|[]f|f“fg13012

fvf[]pfefB

ftfjfbfg

QuickRep

□à-¾

QRShape ,ÍfCEf|[]fg□ã,É’P[]f,È□ú,â[]}CE` ,ð•\Ž|,·,é,½,ß,ÉŽg,ç,Ü,·□B

TQRDBCalc fRf“f|□[flf“fg13013

fvf□fpfefB

ftfjfbfg

QuickRep

□à-¾

,±,lfRf“f|□[flf“fg,í□Cff□[f^ftfB□[f<fh,ì□WCEv,âftfB□[f<fh□”,ìjffEj“fg,ðŽ©“@“l,É□s,ç
,Ü,·□B,»»,ì,½,ß,ìfvf□fpfefB,ì,Ù,©,É□CQRDBCalc ,í TQRDBText
,©,çfvf□fpfefB,ÆfCfxf“fg,ð,·,×,ÄŒp□³,μ,Ä,ç,Ü,·□B

TQRPrinter13014

fvf[]pfefB fCxf"fg f[]fbfh

ftfjfbfg

QuickRep

□à-¾

TQRPrinter ,í[]Cfvf[]frf...[]C•Ú'[]C, ,æ,Ñ"Ç,Ý[]ž,Ý,ì<@"\
,đ"ö,|,½'áf[]xf<,lfvf[]f^flfufWfFfNfg,Å,·[]BfAfvf[]P[]fVf[]f",đ<N"® ,μ,½,Æ,« ,É[]CQRPrinter
,lfufWfFfNfgfCf"fxf^f"fx,ž©"®"I,É[]i[]-,³,ê,Ü,·[]B

QRPrinter ,í<L~^<@"\,|•t,ç,½ Printer flfufWfFfNfg,Æ,à[]¾,|,Ü,·[]BQRPrinter ,ì Canvas
fvf[]pfefB,É'—,ç,ê,éfRf}f"fh,í,·, x,Ä Windows
,lf[]f^ftf@fCf<flfufWfFfNfg,É<L~^,³,ê,Ü,·[]BNewPage f[]fbfh,đŽg,¤
,Æ[]C[]»[]Ý,lfy[]fW,lf[]f, fŠ,É•Úž[] ,³,ê[]CQRPrinter ,í[]V,μ,çfy[]fW,đ[]i[]-,μ,Ü,·[]B^ó[]ü"à—
e'S'ì,ì[]i[]-,³[]i,ß,í[]C,» ,ì[]C<%°É,lfvf[]frf...[]C^ó[]ü[]C, ,é,ç,í•Ú'[],đ'ì,đ,Å,« ,Ü,·[]BQuickReport
,í TQRPrinter flfufWfFfNfg,đŽg,Å,Ä,·, x,Ä,ì^ó[]ü,đ[]s,ç,Ü,·[]B

TQRPreview fRf“f|□[flf“fg13015

fvf□pfefB fCxf“fg f□\fbfh

ftfjfbfg

QuickRep

□à-¾

TQRPreview fRf“f|□[flf“fg,đŽg,α,Æ□Cft□[fU□[“ÆŽ©,lfvfCEfrf...□[ftfH□[f€,đ—e^Ö,É□□□,·,é,±,Æ,ª,Å,«,Ü,·□BQRPreview fRf“f|□[flf“fg,í□CfXfNf□□[f<,âfY□[f€,È,Ç□CfCEf□[fg,đ%œ-Ê,É•\Ž!,·,é,±,Æ,ÉŠÖ,·,é,·,×,Ä,İždŽ-,đŽó,~Ž□,¿,Ü,·□BQRPreview fRf“f|□[flf“fg,İŽg,¢•û,ì—á,í□CQuickReport ,lfff,fvf□fWfFfNfg,ì DEMOPRE ftfH□[f€,đŽQ□Æ,μ,Ä,,¾,¾,¾,¢□B

QRPreview ,É,lfvfCEfrf...□[‘t,ì“ @□ì,đ□§CEä,·,é,½,ß,lf□fbfh,ª,¢,-,Â,©, ,è,Ü,·□B,½,Æ,!,í□Cf{f^f“,ì OnClick fCxf“fg,ì’t,©,ç ZoomToFit f□fbfh,đCEÄ,Ñ□o,·,±,Æ,ª,Å,«,Ü,·□B,±,ê,É,æ,Á,Ä QRPreview fRf“f|□[flf“fg,í□Cfy□[fW‘S‘l,ªfRf“fgf□□[f<“à,ÉŽù,Ü,é,æ,α,ÉŠg‘å,Ü,½,í□k□□,đ□s,¢,Ü,·□B

ColumnMarginInches **fvf** **fpfefB13016**

"K-p

TQuickReport

é **¾**

property LeftMarginInches : Longint

• i" -ñ ('i'g) fCef|[[fg, l-ñŠÔ, É, Æ, éfXfy[[fX, Å, ·B'l, í 1/10 fCf"f` 'P^Ê, ÅŽw'è, µ, Ü, ·B

TQRGroup fRf“f|[]lflf“fg13017

fv[]fpfefB fCxf“fg

ftfjfbfg

QuickRep

□à-¾

QuickReport ,Åf}fXf^[]fŠf“fNfĀf[]f[]fg,đ^óü,·,é•û-@,í 2 ,Â, ,è,Û,·□B1 ,Â,í TQuery
,đŽg,Á,Ä□CQuery ,Æ QRGroup ,đĀ<□‡,μ,Äff[]f^,đfOf<□[fv%»»,·,é•û-@,Â,·□B,à,π 1 ,Â,í
TQRDetailLink fRf“f|[]lflf“fg,đ DetailGroup ,ÉĀ<□‡,μ,ÄŽg,π•û-
@,Â,·□B,Ç,¿,ç,É,à,»»,é,¼,é’·□Š,ª, ,è,Û,·□B

TQRSysData fRf“f|□[flf“fg13018

fvf□fpfefB fCxf“fg

ftfjfbfg

QuickRep

□à-¾

QRSysData fRf“f|□[flf“fg,Í□C^ê'è,lfvfXfef€ff□[f^,ð•\Ž!,.,é,½,ß,ÉŽg,ç,Ü,·□BData
fvf□fpfefB,ì□Ý'è,É,æ,Á,Ä□C,Ç,ì□î•ñ,ð^ó□ü,.,é,©,ð'í'ð,μ,Ü,·□B,±,lfRf“f|□[flf“fg,É,Í TQRLabel
fRf“f|□[flf“fg,Æ“~,¶lfvf□fpfefB,ÆfCxf“fg,à, .è,Ü,·□B

fvf[]pfefB13019

ColumnMarginInches

ColumnMarginMM

Columns

DataSource

DisplayPrintDialog

LeftMarginInches

LeftMarginMM

Orientation

PageCount

PageHeight

PageNumber

PageWidth

RecordCount

RecordNo

ReportTitle

ReportType

RestartData

ShowProgress

SQLCompatible

TitleBeforeHeader

fvf[]pfefB13020

Data

Text

AlignToBand fvfpfefB13021

"K—p

TQRSysData

é¾

fCxf“fg 13022

AfterDetail

AfterPrint

BeforeDetail

BeforePrint

OnEndPage

OnNeedData

OnStartPage

Preview f\fbfh13023

“K—p

TQuickReport

☐é☐¾

procedure Preview

Preview f\fbfh,í☐C•K—v,È,ç☐æ,Éf☐f|☐[fg,ð☐€”ð,μ,Ä,©,ç QRPrinter.Preview f\fbfh,ð☐Ä,Ñ☐o,μ,Ü,·☐BQRPrinter.OnPreview fCxf“fg,ÉfCxf“fgfnf“fhf%o,ðŠ,,è“-;Ä,Ä,ç,È,ç☐é☐#,í•W☐€fvf☐fjf...☐[ftfH☐[f€,ª•\Ž!,³,è,Ü,·☐BS,,,è“-;Ä,ç,è,Ä,ç,é☐é☐#,í,»,) OnPreview fCxf“fgfnf“fhf%o,ª☐Ä,Ñ☐o,³,è,Ü,·☐B•œ<A,·,é’O,Éf☐f|☐[fg,ªŽg,Ä,Ä,ç,½f☐f,fŠ,í%oð•ú,³,è,Ü,·☐B

fifbfh13024

NewPage

Prepare

Preview

Print

Prepare ffbfh13025

“K—p

TQuickReport

é¾

procedure Prepare

Prepare ffbfh,íCfvfƒfrf...[Ü,½,íóü,đŽ©“@“l,És,í,È,ƒƒf|
[fg,ði¬,·,ééƒ,ÉÄ,Ño,µ,Ü,·BPrepare ,ífƒ|[fg,ði¬,µ,Ä QRPrinter
flfufWfFjfg,É—,è,Ü,·Bƒƒ|[fg,ð%đ•ú,·,é,Æ,«,É,Í QRPrinter.CleanUp ffbf
fbfh,ðÄ,Ño,³,É,·,é,í,È,è,Ü,¹,ñB

fvf[]pfefB13026

BandType

Color

Enabled

Font

ForceNewPage

Frame

LinkBand

Ruler

fvf[]pfefB13028

Alignment

AutoSize

Caption

AlignToBand

Color

Font

Transparent

AfterPrint fCxf"fg13029

"K-p

TORBand

é¾

property AfterPrint : procedure (BandPrinted : Boolean) of object

,±,lfCxf"fg,íCfof"fh,â^óü,³,ê,½,Æ,«C, ,é,†,í^óü,âŽŽ,Ý,ç,ê,½,â BeforePrint
fCxf"fg"à,Á'†Ž~,³,ê,½,Æ,«,ÉÆÄ,Ño,³,ê,Ü,·B BandPrinted fpf
%of[f^,lfof"fh,âŽÄÜ,É^óü,³,ê,½,©,ç,α,©,đŽl,μ,Ü,·B

fCxf“fg13030

AfterPrint

BeforePrint

fCxf“fg13031
OnPrint

OnPrint fCxf“fg13032

“K—p

TQRLabel, TQRDBCalc, TQRDBText

□éĒ¾

event OnPrint(Sender : TObject; var Value : String)

fRf“f|□[flf“fg,â^ó□ü,³,é,é'¼'O,ÉĒÄ,Ñ□o,³,é,Ü,·□B^ó□ü,³,é,é•¶Žš—ñ,Í Value fpf
%of□□[f^,É“ü,é,Ü,·,â□C,±,ì•¶Žš—ñ,ì•ï□X,ífĒfR□[fh,É,íŠi”[,³,é,Ü,¹,ñ□B,±
,lfCxf“fg,í□Cff□[f^,ì•Ž!Ē`Ž@,đ□Ý'è,μ,½,è□C•;□”,lftfB□[f<fh,đ 1
,Â,ÉĒ<□‡,μ,½,è,·,é,½,β,ÉŽg,ϕ,Ü,·□B

fvf[]pfefB13033

Alignment

AutoSize

DataSource

DataField

Font

Transparent

Master fvf[]fpfefB13034

“K—p

TQRDetailLink

□éĒ¾

property Master : TQRController;

Master fvf[]fpfefB, í[]CfĒf|[]fg[]ŋ[]-’t, ÉŽg—
p,³,é,éf}fXf^[]fŠf“fNfŠfĒ[]fVf#f”, đŽw’è,·,é,½,β,ÉŽg,ç,Ü,·[]BMaster fvf[]fpfefB, đŽg,κ
,Ü,©,É[]CŽg—p,·,éfe[]fuf<ŠÔ,É“K[]Ø,ÈfŠfĒ[]fVf#f”,ā[]Ý’è,³,é,Ä,ç,È,¯,ê,í,È,è,Ü,¹,ñ[]BMaster
fvf[]fpfefB, í QuickReport fRf“f[]f[]f[]fg,Ü,½,í’¼,ì QRDetailLink fRf“f[]f[]f[]fg,É[]Ý’è,Ä,«,Ü,·[]B

fCxf“fg 13035
OnPrint

Alignment **fvf** **fpfefB13036**

“K—p

TQRDBText

☐é☐^{3/4}

property Alignment : (taCenter, taLeftJustify, taRightJustify)

fRf“fgf☐☐lf<“à,lfefLjXfg,î^Ê’u☐#,í,¹,δ☐\$☐Eä,μ,Ü,·☐B

AutoSize fvf[]fpfefB13037

“K—p

TQRDBText

☐é☐³⁄₄

property AutoSize : boolean

True ,ì☐é☐☐☐CfRf“fgf☐☐[f<,íflffvfVf#f“,É•K—v,È•☐,Ü,Å☐L,ª,è,Ü,·☐BFalse
,ì☐é☐☐☐CfefLfXfg,í☐Ý'è,³,è,½'·•û☐E` ,ÅfNfŠfbfv,³,è,Ü,· ('·•û☐E` “à,ÉŽù,Ü,é•”•ª,¾,¯,ª•\
Ž!,³,è,Ü,·)☐B

DataSource fvf[]fpfefB13038

“K—p

TQRDBText

□éĒ¾

property DataSource : TDataSource

ftfB[]f<fh,ðŽæ,è[]o,:ff[]f^f[]fX,Å,·[]B

DataField fvf fpfefB13039

“K—p

TQRDBText

□éCE¾

property DataField : String

•\Ž!, , éftfB[f<fh,Å,·□B,±,ê,í□CParadox ,ì□Ž®•t,«f□f,,Æ BLOB ,đ□œ,-

”C^Ó,ICE^,ìftfB[f<fh,Å,·□B’É□í,ì (□Ž®•t,«,Å,È,ç)

f□f,,ì□è□#□CfRf“fgf□□[f<,“z’u,³,ê,^{1/2}fof“fh,ífefLjXfg’S’ì,^a“ü,éTfCfY,Ü,Å□L,^a,è,Ü,·□B,^{1/2},^{3/4},µfefL

fXfg,^a%üfy□[fW,Å•^aŠ,,³,ê,é,±,Æ,í, ,è,Ü,¹,ñ□B

Font fvf fpfefB13040

“K—p

TQRDBText, TQRMemo

éŒ¾

property Font : TFont

feLfxfg, lftfHf“fg Cfx^fCf<C, “, æ, ÑfTfCfY, ðsŒä, , é, ½, ß, ÉŽg, ç, Ü, ·BTrueType
ftfHf“fg, ðŽg, æ, Æ—Ç, lŒ<%oÉ, “¾, ç, è, Ü, ·BfvfŒfrf... [fEfBf“fhfE, ÅftfHf“fgfTfCfY, É-
â`è, “Œ, Œ, é, æ, æ, ÉêŒ, íCftfHf“fg-¼, lœ“¾, É TT ,lf} [fN, l•t, ç, ½ftfHf“fg, É•l, l, Ä, Ý, Ä, ,¾, ¾, çB

Transparent fvf[]pfefB13041

“K—p

TQRDBText

☐é☐³⁄₄

property Transparent : Boolean

True ,ì☐ê☐#☐CfefLjXfg,ì”w☐Ei,í“\$%oß,Æ,È,è☐C”w☐Ei,É, ,éfRf“f|☐[f|f“fg,ª“\$,-,Ä☐©,!,Ü,·☐B

PageHeight fvf□fpfefB13042

“K—p

TQuickReport

□éĒ¾

property PageHeight : Longint read only

QRPrinter flfufWfFfNfg, ©, çŽæ“¾, μ, ½Ē»□Ý, ìfy□[fW, ì□, , ³, Å, ·□B, ±, ì'í, í□í, É%œ-Ê
%oð'œ“x, Æ“~, ¶'P^Ê, Å—^, !, ç, ê, Ü, ·□B

DataSource fvf[]fpfefB13043

“K—p

TQuickReport, TQRDetailLink

□éĒ¾

property DataSource : TDataSource

DataSource fvf[]fpfefB,É,Í□C^ó□ü,.,éfĒfR□[fh,ðŽæ,è□o,·ff□[f^f
□[fX,ð□Ý'è,μ,Ü,·□BQuickReport ,ÍŽ©“®“I,É,±
,lf□[f^fZfbfg,ð□‡,É,·,×,Ä“Ç,Ý□o,μ□CŞefĒfR□[fh,²,Æ,É□Ú□×fof“fh,lfZfbfg,ð^ó□ü,μ,Ü,·□BData
Source ,ðŽw'è,¹,·□COnNeedData fCxf“fgfnf“fhf%o,àŽw'è,μ,É,©,Á,½□é□‡,í□Ú□×fof“fh 1
fZfbfg,¾,¼,³,â^ó□ü,³,ê,Ü,·□BOnNeedData fCxf“fg,Æ RestartData fvf[]fpfefB,àŽQ□Æ,μ,Ä,-
,¾,¾,¼□B

PageWidth fvf[]fpfefB13044

“K—p

TQuickReport

□éCE¾

property PageWidth : Longint read only

QRPrinter flfufWfFfNfg, ©,çŽæ“¾,μ,½CE»[]Ý,lfy[]fW,ì•[],Å,·[]B

ShowProgress fvf[]fpfefB13045

“K—p

TQuickReport

☐é☐³⁄₄

property ShowProgress : boolean

True (ffftfHf<fg) ,l☐ê☐#☐Cf☐☐[fg,☐☐€”õ’t,“,æ,Ñ^ó☐ü’t,Éfvf☐fOj☐☐XftfH☐[f€,ª•\
Ž!,³,è,Ü,·☐Bfvf☐fOj☐☐XftfH☐[f€,É,Í☐mfLfff“fZf<☐nf{f^f“,ª, ,è,Ü,·☐B

Orientation fvf fpfefB13046

“K—p

TQuickReport

□éĒ¾

property Orientation : TPrinterOrientation

—pŽ†,ì•ûĒü,đ'ı'đ,μ,Û,·□BOrientation ,É,Í poPortrait ,Û,½,Í poLandscape
,đ□Ý'è,Å,«,Û,·□BTPrinterOrientation Ē^,Í Printer ftfjfbfg,Å□éĒ¾,¾,ê,Ä,ç,é,±,Æ,É'□^Ó,μ,Ä,-
,¾,¾,ç□B,±,lfvf fpfefB,đ□Ý'è,μ,½,ç□ê□‡,Í□Cuses □ß,É Printer ftfjfbfg,đ'Ç%oÄ,; ,é•K—
v,ª, ,è,Û,·□B

AutoSize fvfpfefB13048

“K—p

TQRLabel

☐é☐¾

property AutoSize : Boolean

True (ffftjHf<fg) ,ìê☐☐CfRf“f|☐lf“fg,ÍfefLjXfg‘S‘ì,ªŽù,Ü,éfTfCfY,Ü,Å☐L,ª,è,Ü,·☐BFalse
,ìê☐☐CfTfCfY,íĈÀ’è,É,È,è,Ü,·☐B

Caption fvf fpfefB13049

“K—p

TQRLabel

□éŒ¾

property Caption

Caption ,É,Í^óü,³,é,éŽÀ□Ū,lfefLjXfg,ª“ü,è,Ū,·□B,±,é,ÍfŒf|
□[fg,ì□€”ö’t,ÉfCfxj“fg,É,æ,Á,Ä•ï□X,Å,«,Ū,·□B

AlignToBand fvfpfefB13050

“K—p

QRLabel

☐é☐¾

property AlignToBand

Alignment fvfpfefB, ì☐ø%øÊ, ð☐\$☐ä, μ, Ü, ·☐B

True QRLabel fRf“f|☐|f|“fg, í QRBand , ì“à•”, Å☐¶☐C’t%ø>☐C, Ü, ½, í%øE, Ê‘μ, †, ç, ê, Ü, ·☐B

FalsefRf“f|☐|f|“fg“à, ìfefeLfXfg, ¾, ¯, ð^Ê‘u☐‡, í, ¹, ³, ê, Ü, · (ffftfHf<fg)☐B

Color Propert13051

“K—p

TQRLabel

□éCE¾

property Color

fejLfXfg,ì”wCEi□F,Å,·□BTransparent fv□f□pfefB,àŽQ□E,μ,Ä,,¾,¾,ç□B

Font fvfꞀfpfefB13052

“K—p

TQRLabel

ꞀéĒ¾

property Font

ftfHꞀ[f€‚Ü‚½‚Í QRBand ‚ÉffftfHf<fg^ÈŠO‚ìftfHf“fg‚ðŽg‚ç‚½‚çꞀêꞀ‡‚Í Font
fvfꞀfpfefB‚ðŸ’è‚µ‚Ü‚ꞀB

fqf“fg

TrueType ftfHf“fg‚ðŽg‚x‚ÆꞀÅ—Ç‚ìĒ<%oÊ‚ª“¾‚ç‚ê‚Ü‚ꞀBfvfĒfjf...

Ꞁ[fEfbf“fhfE‚ÅftfHf“fgfTfCfY‚É-â’è‚ªꞀ¶‚¶‚é‚æ‚x‚ÉꞀêꞀ‡‚ÍꞀCftfHf“fg-¼‚ìꞀæ“ª‚É TT ‚lf}Ꞁ[fN‚ì•t‚ç
,½ftfHf“fg‚É•İ‚Ĭ‚Ÿ‚Ä‚¾‚¾‚¾‚¾‚çꞀB

Transparent fvf[]fpfefB13053

“K—p

TQRLabel

☐é☐¾

property Transparent

Transparent ,^a False (fftfHf:fg) ,ìê[]#[]CfefLfXfg,ì”w☐Ei,ÍfefLfXfg,^a·`
%oæ,³,ê,é’O,ÉfyfCf”fg,³,ê,Ü,·[]BTransparent ,^a True ,ìê[]#[]C”w☐Ei,ÍfyfCf”fg,³,ê,Ü,¹,ñ[]B

fvf[]pfefB13054

Font

Lines

WordWrap

fvf[]pfefB13055

Brush

Pen

Shape

PrinterOK fvf fpfefB13056

“K—p

TQRPrinter

☐é☐¾

PrinterOK: boolean

ŽÀ☐sŽžfvf fpfefB, Å☐C“Ç, Ý☐o, μ☐ê—p, Å, ·☐B

fvfŠf“f^fhf%ofCfo, ³fCf“fXfg☐[f<, ³, ê, Ä, ç, ê, î PrinterOK , í True , É, È, è, Ü, ·☐B

Brush fvf fpfefB13057

“K—p

TQRShape

□éCE¾

property Brush : TBrush

□}CE` ,đ•`%æ, ,é,Æ,«,ÉŽg,xfuf%ofV,Å,·□B□Ú□×,í TBrush ,đŽQ□Æ,μ,Ä,,¾,¾,¾,¢□B

Height `fvf` `fpfef` **13058**

“K—p

TQRShape

☐ **é** **CE**^{3/4}

property Height default 65;

Pen fvf[]pfefB13059

“K—p

TQRShape

☐é☐^{3/4}

property Pen : TPen

☐}☐E` ,đ•`%œ,·,é,Æ,«,ÉŽg,xfyf“ ,Å,·☐B☐Ú☐×,Í TPen ,đŽQ☐Æ,μ,Ä,,^{3/4},³,☐☐B

Shape fvf□pfefB13060

“K—p

TQRShape

□éCE¾

property Shape : TQRShapeType Read FShape write SetShape;

‘l

^Ó-i

qrsRectangle	'·•ûCE` ,ð•`%oæ, ,é
qrsCircle	%o~ ,ð•`%oæ, ,é
qrsVertLine	□...•½□ü,ð•`%oæ, ,é
qrsHorLine	□, '¼□ü,ð•`%oæ, ,é
qrsTopAndBottom	fRf“fgf□□[f<,l□ã,Æ%oº,É□...•½□ü,ð•`%oæ, ,é
qrsRightAndLeft	fRf“fgf□□[f<,l□¶%oE,l',É□, '¼□ü,ð•`%oæ, ,é

Width fvj□fpfefB13061

“K—p

TQRShape

□éCE^{3/4}

fvf[]pfefB13062

AsInteger

AsReal

Operation

PrintMask

ResetBand

Operation fvf[]pfefB13063

“K—p

TQRDBCalc

□éĈ¾

property Operation : (qrcSUM, qrcCOUNT, qrcAVERAGE, qrcMIN, qrcMAX)

ŽÀ[]s,μ,½,†%‰ŽŽ,đ[]Ý’è,μ,Û,·[]B

qrcSUM ftfB[][f<fh,ì[]†Ĉv,đĈvŽŽ,·,é

qrcCOUNT ftfB[][f<fh,ì[]”,đf[]fE[]f“fg,·,é

qrcAVERAGE ftfB[][f<fh,ì•½<ì’l,đĈvŽŽ,·,é

qrcMIN ftfB[][f<fh,ì[]Ā[]¬’l,đ•ÛŽ[],·,é

qrcMAX ftfB[][f<fh,ì[]Ā’â’l,đ•ÛŽ[],·,é

PrintMask fvf[]fpfefB13064

“K—p

TQRDBCalc

□éĒ¾

property PrintMask : String

PrintMast ,í[]CQRDBCalc fRf“f|[]lfj“fg,ì[]o—íĒ`Ž® ,đ[]Ý`è , ,é ,½ ,ß ,ÉŽg ,ç ,Ü ,·[]BPrintMask
, ,ç ,ì ,æ ,x ,É<@“\ , ,é ,© ,É ,Á ,ç ,Á ,í Delphi ,lfwf·fv,ì FormatFloat Žè`± ,< ,đŽQ[]Æ ,μ ,Ä ,¾ ,¾ ,ç[]B

ResetBand fvfpfB13065

“K—p

TQRDBCalc

☐é☐¾

property ResetBand : TQRBand

ResetBand fvfpfB,ÉÝ'è,³,ê,Ä,ç,éfof“fh,²^ó☐ü,³,ê,½☐ě,Å QRDBCalc ,ÍŠfZfbfg,³,ê,Ü,·☐B

AsInteger fvfpfB13066

“K—p

TQRDBCalc

□é☒¾

property AsInteger : Longint read only

QRDBCalc fRf“f|□[lf“fg,ì☒»□Ý,ì'l,ð□®□”,Æ,μ,Ä•Ô,μ,Ü,·□B

AsReal fvj[]fpfefB13067

Allpies to

TQRDBCalc

☐é☐¾

property AsReal : real read only

QRDBCalc fRf“f|[]f|f“fg,ì☐»☐Ý,ì'l,ðŽÀ☐”,Æ,μ,Ä•Ô,μ,Ü,·☐B

TQRDetailLink fRf“f[]lf“fg13068

fvf[]pfefB fCxf“fg

ftfjfbfg

QuickRep

□à-¾

QRDetailLinkfRf“f[]lf“fg,lf}fXf^[]fŠf“fNfCef[]fg,ð[]□¬,·,é,½,ß,ÉŽg,ç,Ü,·□B2
,Å,lf[]fuf<,ðŽg,æ’P[]f,Éf}fXf^[]fŠf“fNfCef[]fg,ì[]ê[]±,í[]Cf}fXf^[][-p,É QuickReport fRf“f[]lf“fg,ð[]CfŠf“fN—p,É QRDetailLink ,ð,»,é,¼,ê 1 ,ÅŽg,ç,Ü,·□B,»,µ,Å□CQRDetailLinkfRf“f[]lf“fg,ì Master fvf[]pfefB,ª QuickReport fRf“f[]lf“fg,ðŽw,·,æ,æ,ÉY’è,µ,Ü,·□Bf}f<f’fCefxf<,lf}fXf^[]fŠf“fNfCef[]fg,ð[]□¬,·,é,½,ß,É Master fvf[]pfefB,ð•É,ì QRDetailLink fRf“f[]lf“fg,ðŽw,·,æ,æ,ÉY’è,·,é,±,Æ,à,Å,«,Ü,·□B•;□”,ì QRDetailLink fRf“f[]lf“fg,ª“¬,¶f}fXf^[][,ðŽ□,Å,± ,Æ,ª,Å,«□C,»,é,¼,ê,ª“¬,¶fCefxf<,Å[]±ŽY^óü,³,ê,Ü,·□BQRDetailLink fRf“f[]lf“fg,É,í□C□Ü□×□Cfwfbf_□[]C,“ ,æ,Ñftfbf^□[,ì 3 ,Å,lf[]fof“fh,ðŽw’è,Å,«,Ü,·□B□Ü□×fof“fh,í□CDataSource fvf[]pfefB,ÅY’è,³,ê,½ff[]f^fZfbfg,ìŠefCefR□[fh,²,Æ,É 1 %oň^óü,³,ê,Ü,·□B

OnFilter ,ðŽg,Å,ÄfCefR□[fh,Éftfbf<f^,ð,©,¬,é,±,Æ,ª,Å,«,Ü,·□BOnNeedData fCxf“fg,ðŽg,ì,í□Cfe□[fuf<,Ü,½,í-â,ç□±,í,¹^ÈŠO,ìff[]f^f[]fX,©,çff[]f^,ð^óü,Å,«,Ü,·□B

fvf[]pfefB13069

Canceled

Canvas

EnableOpenBtn

EnablePrintBtn

EnableSaveBtn

ToPage

FromPage

Orientation

Page

PageHeight

PageCount

PageNumber

PageWidth

PrinterOK

ShowProgress

Status

Title

Thumbs

PageCount fvf[]pfefB13070

“K—p

TQuickReport

□é☒¾

property PageCount : Longint read only

f☒f|[]fg“à,ì‘[]fy[]fW□”,Å,·□B,±,ìfvf[]pfefB,ìf☒f|[]fg,²Š®—¹,·,é,Ü,Å,Í—L☒ø,Å,Í, ,è,Ü,¹,ñ□B

fCxf“fg13071
OnPreview

OnPreview fCxf“fg13072

“K—p

TQRPrinter

□éĒ¾

property OnPreview : procedure of object

,±,lfCxf“fg,í□CQuickReport ,É“ü,Á,Ä,ç,é•W□€fvfĒfrf...□[ftfH□[f€,ì,©,í,è,É“ÆŽ©,lfvfĒfrf...
□[ftfH□[f€,đ•\Ž!,μ,½,ç□é□‡,ÉŽg,ç,Ü,·□BjffXf^f€fvfĒfrf...□[,ì□□¬,í□CTQRCustomPreview
fRf“f|□[lf“fg,đŽg,!,ÍŠÉ’P,Â,·□B,Ç,ì,æ,ϣ,É□□¬,·,é,©,É,Á,ç,Ä,Ífff,fvf□fOf%of€,đŽQ□Æ,μ,Ä,-
,¾,¾,ç□B

Canceled fvf[]pfefB13073

“K—p

TQRPrinter

□éĒ¾

property Canceled : boolean

Cancel f[]fbfh,ªĒÄ,Ñ[]o,³,é,½[]ê[]ž,É True ,É,È,è,Ü,·[]B,±,é,Ít[]fU[][,ª[]mfLfff“fZf<[]nf{f^f“,ð
%oŸ,µ,½,©,Ç,¤,©,đ`fFbfN,·,é,½,ß,ÉŽg,!,Ü,·[]B

Canvas fvf[]fpfefB13074

“K—p

TQRPrinter

[]éĒ¾

property Canvas : TCanvas

^óü,ð[]s,¼,ß,ÉŽg,afLfff“fofX,Å,·[]B

EnableOpenBtn fvf fpfefB13075

“K—p

TQRPrinter

☐é☐¾

property EnableOpenBtn : boolean

True , ìê☐☐C•W☐€fvf☐fjf...☐[ftfH☐[f€,É☐mOpen file☐nf{f^f“,ª•\Ž|,³,ê,Ü,☐B

EnablePrintBtn fvf[]pfefB13076

“K—p

TQRPrinter

☐é☐³⁄₄

property EnablePrintBtn : boolean

True ,ì☐é☐#☐C•W☐€fvf☐Efrf...☐[ftfH☐[ff€,É☐mPrint☐nf{f^f“,ª•\Ž!,³,ê,Ü,·☐B

EnableSaveBtn fvf[]pfefB13077

“K—p

TQRPrinter

☐é☐³⁄₄

property EnableSaveBtn : boolean

True ,)è☐#☐C•W☐€fvf☐fjf...☐[ftfH☐[ff€,É☐mSave file☐nf{f^f“,☐•\Ž|,³,é,Ü,☐B

ToPage fvfpfefB13078

“K—p

TQRPrinter

☐é☐¾

property ToPage : integer

^óü,·,é☐Å☐ě,ly☐[fW,ðŽw'è,μ,Ü,·☐B

FromPage fvf[]fpfefB13079

“K—p

TQRPrinter

□éĈ¾

property FromPage : integer

^óü,·,éÅ%o,lfy[]fW,đŽw'è,μ,Ü,·[]B

Orientation fvf□pfefB13080

“K—p

TQRPrinter

□é☒¾

property Orientation : TPrinterOrientation

poPortrait ,Ü,½,Í poLandscape ,đ□Ý’è,μ,ÄfvfŠf“f^,ì—pŽ†,ì•û☒ü,đ’l’đ,μ,Ü,·□B

Page fvj[]pfefB13081

“K—p

TQRPrinter

☐é☐¾

property Page : TMetafile read only

☐»☐Ý'í'đ,μ,Ä,ç,éfy☐[]fW,ìf☐f^ftf@fCf<•\☐»»,Å,·☐B,±,ìf☐f^ftf@fCf<,í Status fvj[]pfefB,ª
mpFinished ,ìžž,ì,Ý—L☐ø,Å,·☐B

PageHeight fvf[]pfefB13082

“K—p

TQRPrinter

☐é☐^{3/4}

property PageHeight : integer read only

☐»☐Ý, ìfy☐[fW, ì☐,,³, ðfsfNfZf<'P^Ê, Å•\, μ, Ü, ·☐B

PageCount fvf[]pfefB13083

“K—p

TQRPrinter

☐é☐^{3/4}

property PageCount : Integer read only

☐»☐Ý, ì^☐üfWf#fu, Å QRPrinter ,É'—,ç,ê,½'☐fy☐lfW☐”, Å, ·☐B

PageNumber fvf[]fpfefB13084

“K—p

TQRPrinter

□é☒¾

property PageNumber : integer

QRPrinter ,đŽg,Á,Ä•\Ž!,μ,½,¢[]C, ,é,¢

,ÍNfŠfbvf{[]fh,ÉfRfs[][,μ,½,¢fy[]fW,đ'!đ,μ,Ü,·[]BStatus fvf[]fpfefB,ª mpFinished ,É,È,Á,Ä,¢
,é•K—v,ª, ,è,Ü,·[]B

PageWidth fvf[]pfefB13085

“K—p

TQRPrinter

☐é☐¾

property PageWidth : integer read only

☐»☐Ý, ðfy☐[]fW•☐, ðfsfNfZf·P^Ê, Å•\, µ, Ü, ·☐B

ShowProgress fvf[]fpfefB13086

“K—p

TQRPrinter

□éĒ¾

property ShowProgress : boolean

True ,ìê[]C^óü[]C•Ú'[]C,“,æ,Ń“Ç,Ý[]ž,Ý,ð[]s,Á,Ä,ç,é, ,ç,¾fvf[]fOfĈfXftfH[][f€,ª•\
Ž!,³,è,Ü,·[]Bfvf[]fOfĈfXftfH[][f€,É,í[]mfLfff“fZf<[]nf{f^f“,ª, ,è[]Cft[][fU[][,ª,ª[]mfLfff“fZf<[]nf{f^f
“,ð%öÿ,µ,½[]ê[]#,í Canceled fvf[]fpfefB,ª True ,É[]Ý'è,³,è,Ü,·[]B

Status fvf[]pfefB13087

“K—p

TQRPrinter

☐é☐¾

property Status : TQRPrinterStatus read only

QRPrinter ,ì☐»☐Ý,ì☐ó'Ô,ðŽì,μ,Ü,·☐BŽŸ,ì•\,ì,☐,,é,©,ì'l,É,È,è,Ü,·☐B

'l

^Ó-i

mpReady	QRPrinter ,Í☐V,μ,☐^ó☐üfWf#fu,ðŽó,-“ü,é,é☐€”ö,ª,Å,«,Ä,☐,é
mpBusy	^ó☐üfWf#fu,ð<L~^'t,Å, ,é
mpFinished	^ó☐üfWf#fu,Í☐l— ¹ ,μ,½
mpPrinting	QRPrinter ,ÍfvfŠf“f^ ,ÉfWf#fu,ð'—☐M't,Å, ,é
mpPreviewing	fvf☐fjf...☐[,ª☐»☐ÝfAfnfefBfu,É,È,Á,Ä,☐,é

Title fvf[]fpfefB13088

“K—p

TQRPrinter

☐é☐^{3/4}

property Title : String

☐»☐Ý, òfWf#fu, òf^fCfgr<, Å, ☐Bf^fCfgr<, ÍvfŠf“fgf}f[]fWff, ”, æ, Ñf[]fbfgr☐☐[]fN, ò^ó☐üfLf...☐[, É•\
Ž!, ³, è, Ü, ☐B

Thumbs fvf[]pfefB13089

“K—p

TQRPrinter

□é☒¾

property Thumbs : integer

QRPrinter ,í 1 -‡,ì—pŽ†,É•i□”,ìfy□[fW,ìfCf□□[fW,ð□k□¬,μ,Ä^ó□ü,Å,«,Ü,·□B,½,Æ,|,Î Thumbs
,ð 2 ,É□Ý’è,·,é,Æ 1 -‡,É 4 (2□~2) fy□[fW•ª,ª^ó□ü,³,ê□C3 ,ð□Ý’è,·,é,Æ 9 (3□~3)
fy□[fW•ª,ª^ó□ü,³,ê,Ü,·□B

fvf[]pfefB13090

PageNumber

Zoom

fCxf“fg13091

Show

TQRPreview ,ì Show fCxf“fg13092

f\fbfh13093

BeginDoc

Cancel

Cleanup

EndDoc

Load

NewPage

Preview

Print

Save

BeginDoc Žè'±,«13094

“K—p

TQRPrinter

□éĒ¾

procedure BeginDoc

□V,μ,ç^ó□üfWf#fu,đŠŽn,μ,Ü,·□BStaus fvf□pfefB,đ mpBusy ,É□Ý'è,μ,Ü,·□B

Cancel Žè'±,«13095

“K—p

TQRPrinter

□éCE¾

procedure Cancel

CE»□Ý,ì^óüfWf#fu,đfLfff“fZf<,μ,Ü,·□BStaus fv f□pfefB,đ mpReady ,É□Ý'è,μ,Ü,·□B

Cleanup Žè'±,«13096

“K—p

TQRPrinter

□éĈ¾

procedure Cleanup

Ĉ»Ÿ,ì^óüfWf#fu,ì|—¹Ĉã,É□Cfy□[fW,žg,Á,Ä,ç,½f□f,fŠ,đ,·,×,Ä%đ•ú,μ,Û,·□Bstaus
fvf□fpfefB,đ mbReady ,ÉŸ'è,μ,Û,·□B

EndDoc Žè'±,«13097

“K—p

TQRPrinter

□éĒ¾

procedure EndDoc

fLfff“fofX,Ö,lfRf}f“fh,ì—□M,²□l,í,Á,½,±,Æ,ð QRPrinter ,É'm,ç,¹,Ü,·□B Staus fvf□fpfefB,ð
mpFinished ,É□Y'è,μ,Ü,·□B

Load Žè'±,«13098

“K—p

TQRPrinter

□éĒ¾

procedure Load(Filename : String)

^È'O,É•Ù'¶,μ,½fĒf|□[fg,đftf@fCf<,©,ç“Ç,Ý□ž,Ý,Ü,·□B

NewPage Žè'±,«13099

“K—p

TQRPrinter

□éĈ¾

procedure NewPage

QRPrinter

,ÉV,μ,ϕfy[fW,ì^óü,đŠjŽn,·,é,æ,αŽwŽ!,μ,Û,·BCE»Ý,lfy[fW,Íf,f,šā,É•ÛŽ,³,êC[V,μ,ϕf
y[fW,³ì-³,ê,Û,·Bfy[fW”Ô†,í 1 ‘%A,μ,Û,·BStatus fvffpfefB,³ mpBusy ,É,È,Á,Ä,ϕ
,é•K—v,³, ,è,Û,·B

Preview Žè'±,«13100

“K—p

TQRPrinter

□éĒ¾

procedure Preview

^óüfvfĒfrf...□[,đ•\Ž! ,μ,Ü,·□BStatus fvf□fpfefB,ª mpFinished ,É,È,Á,Ä,ç,é•K—
v,ª, ,è,Ü,·□BOnPreview fCxf“fg,ÉfCxf“fgfnf“fhf%o,đŠ,,è“- ,Ä,Ä,ç,é□é□#,í□CPreview Žè'±
,«,íĒÄ,Ň□o,³,ê,Ü,·,ª%o½,à,μ,Ü,¹,ň□B

Print Žè'±,«13101

“K—p

TQRPrinter

□éĈ¾

procedure Print

Ĉ»Ÿ,ĴĈf|□[fg,đ^ó□ü,μ,Ü,·□Bstatus fvf□pfefB,^a mpFinished ,É,È,Á,Ä,č,é•K—v,^a ,è,Ü,·□B

Save Žè'±,«13102

“K—p

TQRPrinter

□éĒ¾

procedure Save(Filename : String)

Ē»Ÿ,lfĒf|□[fg,đftf@fCf<,É•Ů'¶,μ,Ů,·□BStatus fvf□fpfefB,ª mpFinished ,É,È,Á,Ä,č,é•K—
v,ª, ,è,Ů,·□Bftf@fCf<Ē`Ž® ,Í QuickReport ,ì“à•”Ē`Ž® ,Å,·□Bftf@fCf<Ē`Ž® ,ÉŠÖ,·,éfhfLf...
f□f“fg,ÍĒă“úĒöšj,·,é—\`è,Å,·□B

fvf[]pfefB13104

DataField

DataSource

FooterBand

HeaderBand

Level

GroupData

fCxf“fg 13105
OnNeedData

DataSource fvf[]fpfefB13106

“K—p

TQRGroup

□é☒¾

property DataSource : TDataSource

,±,lfOf<[]fv,δ□Ú'±,μ,½,¢ff[]f^f[]fX,δ'1'δ,μ,Ü,·□B

DataField fvf fpfefB13107

“K—p

TQRGroup

□é☒¾

property DataField : String

,±,lfOf<□[fv,ð□Ú'±,μ,½,¢ff□[f^ftfB□[f<fh,ð'l'ð,μ,Ü,·□BDataField ,l',ª•ï
%o»,·,é,©□C□ã^Êf☒fxf<,lfOf<□[fv,ð□Á^ó□ü,·,é,Æ,«,É□CfOf<□[fv,ð□Á^ó□ü,μ,Ü,·□B

FooterBand fvf[]fpfefB13108

“K—p

TQRGroup

☐é☐¾

Property FooterBand : TQRBand

fOf<☐[fv,ìftfbf^☐[fof“fh,Æ,μ,Ä^ó☐ü,·,éfof“fh,δ'l'δ,μ,Ü,·☐B

HeaderBand fvfpfefB13109

“K—p

TQRGroup

☐é☐¾

Property HeaderBand : TQRBand

fOf☐[fv,lfwfbf_☐[fof“fh,Æ,μ,Ä^ó☐ü,·,éfof“fh,ð‘l’ð,μ,Ü,·☐B

Level fvfpfefB13110

“K—p

TQRGroup

□éĒ¾

Property Level : Integer

,±,lfOf<□[fv,lfĒfxf<,đŽ!,μ,Ü,·□B□Å,àŠO’x (□ã^Ê) ,lfĒfxf<,ª 0□C□Å,à“à’x (%oo^Ê) ,lfĒfxf<,ª 9
,Å,·□B

OnNeedData fCxf“fg13111

“K—p

TQRGroup

□éCE¾

Property OnNeedData : procedure (var Value : String) of object

```
QRGroup.OnNeedData fCxf“fg,ðŽg,æ,Æ□CValue fpf%of□□[f^,ì'l,ð•ì,l,é,±  
,Æ,É,æ,Á,ÄfOf<□[fv,ð•ª,¯,é•û-@,ð•í□X,Á,«,Ü,·□B□Ú'±,³,ê,Ä,ç,éff□[f^ftfB□[f<fh,ìCE»□Y,ì'l,ª  
Value fpf%of□□[f^,É'—,ç,ê□C,»,ì'l,í,Ç,ì,æ,æ,É,Á,à•í□X,Á,«,Ü,·□B,½,Æ,l,î□CfOf<□[fv,ð Name  
ftfB□[f<fh,É□Ú'±,µ,Ä,ç,é□ê□#□CŽY,ìfR□[fh□s,ðŽg,æ,Æ Name ftfB□[f<fh,ì'l,ì□Á□%  
,ì•¶Žš,ª•ì,í,é,²,Æ,ÉfOf<□[fv,ª□Ø,è'Ö,í,è,Ü,·□B
```

Value:=copy(value,1,1);

fifbfh13112

GroupData fvf[]pfefB13113

“K—p

TQRGroup

☐é☒¾

Property GroupData : String

fCxf“fg 13114

OnPrint

TQRSysData ,ì OnPrint fCxf“fg13115

AutoSize fvfpfefB13116

“K—p

TQRSysData

☐éCE^{3/4}

Color fvf **B13117**

“K—p

TQRSysData

☐éCE^{3/4}

Data fvf[]pfefB13118

“K—p

TQRSysData

□é☒¾

property Data : TQRSysDataType

Data fvf[]pfefB,í[]CfRf“f|[]f|f“fg,ª,ç,ì[]î•ñ,ð•\Ž|,.,é,©,ð•\,μ,Û,·[]B

’l

^Ó-i

qrsTime	☒»[]Ý,ìŽž[] [] [] CHH:MM ☒`Ž®
qrsDate	☒»[]Ý,ì“ú•t[]CfOf[] [] [fof<•ï[]” ShortDateFormat ,É,æ,Á,Ä[]Ý`è,³,ê,é☒`Ž®
qrsDateTime	fjf“f},Å<æ[]Ø,ç,ê,½☒»[]Ý,ì“ú•t,ÆŽž[] []
qrsPageNumber	☒»[]Ý,ìfy[] [fw”Ô[]t
qrsReportTitle	f☒f [] [fg,ìf^fCfjf<[]CTQuickReport.ReportTitle fvf[]pfefB,É[]Ý`è,³,ê,Ä,ç,é’l
qrsDetailCount	f☒f [] [fg“à,Å^óü,³,ê,é’f☒fR[] [fh[]”
qrsDetailNo	^óü’t,ì☒»[]Ý,ìf☒fR[] [fh”Ô[]t

Font fvf[]pfefB13119

“K—p

TQRSysData

☐éŒ¾

Text fvf[]fpfefB13120

“K—p

TQRSysData

□é☒¾

property Text : String

Text fvf[]fpfefB,í[]CŽÀ[]Ù,ìfvfXfef€ff[]f^,ì'O,ìLfffvJvf#f“,Æ,μ,Ä^ó[]ü,³,ê,Ü,·[]B

AfterPrint fCxf“fg13122

“K—p

TQuickReport

□é€¾

property AfterPrint : TNotifyEvent

AfterPrint fCxf“fg,íC€”õ,³,ê,½f€f|□[fg,ª QRPrinter flfufWfFfNfg,É‘—
,ç,ê,½,Æ,«,É€Ä,Ñ□o,³,ê,Ü,·□B

BeforeDetail fCxf“fg13123

“K—p

TQuickReport

□éĒ¾

property BeforeDetail : TNotifyEvent

BeforeDetail fCxf“fg,í□CŠefĒfR□[fh,ì□Ú□xf“fh,ª^ó□ü,³,é,é’O,ÉĒÄ,Ñ□o,³,é,Ü,·□B

AfterDetail fCxf“fg13124

“K—p

TQuickReport

□éŒ¾

property AfterDetail : TNotifyEvent

AfterDetail fCxf“fg,ÍŒŠefŒfR□[fh,ìÚ×fof“fh,ª^óü,³,é,½Œă,ÅŒĂ,Ñ□o,³,é,Ü,·□B

Print f\fbfh13125

“K—p

TQuickReport

☐é☐³⁄₄

procedure Print

f☐f|☐[fg,ð☐€”ö,μ,Ä^ó☐ü,μ,Ü,·☐B

TQRCustomControl13126

fvf□pfefB f□f□bfh

ftfjfbfg

QuickRep

□à-¾

QRCostomControl fRf“f□[f□f“fg,í QuickReport ,ì,·,×,Ä,ì^ó□ü%oÂ“\fRf“f□[f□f“fg,ìŠî- {fNf %ofX,Å,·□B“ÆŽ©,ì^ó□ü%oÂ“\fRf“f□[f□f“fg,đ□ì□¬,μ,½,¢□ê□‡,Í□C,±,ìfNf%ofX,©,ç“h□¶,³,¹,é•K —v,^a, ,è,Ü,·□B QRCustomControl ,É,Í%oo^ÊfNf%ofX,Åf□[fo□[f%ofCfh,·,é%oo¼'zf□f□bfh,^a 2 ,Â, ,è,Ü,·□B

BandType fvf[]pfefB13127

“K—p

TQRBand

□é☒¾

property BandType : TQRBandType

BandType ,Í☒Cfof“fh,ª,ç,Á^ó☒ü,³,ê,é,☉,ð'í,ð,µ,Ü,·☒Bfof“fh,ìŽí—p,É,æ,Á,Ä☒CQuickReport
,É,æ,Á,ÄŽ☉“®“l,É^ó☒ü,³,ê,é,à,l,Æ☒CQRDetailLink fRf“f[]f[]fg,Ü,½,Í QRGroup fRf“f[]
[]f[]fg,É☒Ú'±,µ,È,ç,Æ^ó☒ü,³,ê,É,ç,à,l,ª, ,è,Ü,·☒B

f[]ffj...[][,☉,ç☒m'O-É,É^Ú“®(F)☒n,Æ☒m“w-É,É^Ú“®(B)☒n,ðŽg,Á,Ä“~,ñŽí—
p,lfof“fh,ì^ó☒ü☒#☒~ ,ð☒\$☒Æä,Á,«,Ü,·☒B

'l

^ó-i

rbTitle f^fCfjgf<fof“fh,íŽ☉“®“l,Éf☒f[]f[]fg,ì☒æ“ª,É 1
%ñ^ó☒ü,³,ê,Ü,·☒BQuickReport.TitleBeforeHeaderTQuickReport_
Property_TitleBeforeHeader
fvf[]pfefB,É,æ,Á,Ä☒Cfy[]fWfwfbf_[]fof“fh,Æf^fCfjgf<fof“fh,ì,ç,ì,
ç,ª☒æ,É^ó☒ü,³,ê,é,☉,ª☒Æ^,Ü,è,Ü,·☒B

rbPageHeader

fy[]fWfwfbf_[]fof“fh,íŽ☉“®“l,ÉŠefy[]fW,ì☒æ“ª,É^ó☒ü,³,ê,Ü,·☒B
QuickReport.TitleBeforeHeader
fvf[]pfefB,É,æ,Á,Ä☒Cfy[]fWfwfbf_[]fof“fh,Æf^fCfjgf<fof“fh,ì,ç,ì,
ç,ª☒æ,É^ó☒ü,³,ê,é,☉,ª☒Æ^,Ü,è,Ü,·☒B•K—
v,É☒“ ,¾,~fy[]fWfwfbf_[]fof“fh,ðŽw'è,Á,«,Ü,·☒B

rbDetail

☒Ú☒×fof“fh,Íff☒[]f^fZfbfg,ìŠef☒fR☒[]fh,²,Æ,É 1
%ñ^ó☒ü,³,ê,Ü,·☒BQRDetailLink fRf“f[]
[]f[]fg,ðŽg,Á,Äf}fXf^☒[]fŠf“fNf☒f[]f[]fg,ð☒Ý☒Ev,·,é☒é☒#☒C,±
,lfof“fh,lf}fXf^☒[]fe☒[]fuf<,ì☒Ú☒×fof“fh,É,È,è,Ü,·☒B•K—
v,É☒“ ,¾,~☒Ú☒×fof“fh,ðŽw'è,Á,«,Ü,·☒B

rbSubDetail

QRDetailLink fRf“f[]f[]fg,ðŽg,Á,Äf}fXf^☒[]fŠf“fNf☒f[]
[]f[]fg,ð☒Ý☒Ev,·,é☒é☒#☒C,±
,lfof“fh,lfŠf“fNf☒[]fuf<,ì☒Ú☒×fof“fh,É,È,è,Ü,·☒BQRDetailLink.Deta
ilBand fvf[]pfefB,ðŽg,Á,Ä DetailGroup fof“fh,ð DetailLink fRf“f[]
[]f[]fg,É☒Ú'±,µ,È, ,è,ì,È,è,Ü,¹,ñ☒B

rbPageFooter

fy[]fWftfbf^☒[]fof“fh,íŽ☉“®“l,ÉŠefy[]fW,ì☒Å☒Æä,É^ó☒ü,³,ê,Ü,·☒B

rbSummary

fTf}fŠ☒[]fof“fh,lf☒f[]
[]f[]fg,ì☒Å☒Æä,lfy[]fW,É☒C,·,x,Ä,ì☒Ú☒×fof“fh,ÆfOf<☒[]fvtfbf^☒[],ì☒
ä,ÉŽ☉“®“l,É^ó☒ü,³,ê,Ü,·☒B

rbGroupHeader

fOf<☒[]fvfwfbf_[]fof“fh,ì☒CQRGroup fRf“f[]f[]fg,Æ QRDetailLink
fRf“f[]f[]fg,lfof<☒[]fvfwfbf_[]f,Æ,µ,ÄŽg,ç
,Ü,·☒BfOf<☒[]fvfwfbf_[]fof“fh,ð^ó☒ü,·,é,É,ì☒C,±,è,ç,lfof“f[]

rbGroupFooter	<p> [flf"fg,ÉÚ'±,μ,È,̄,ê,î,È,è,Û,¹,ñB fOf<[fvftfbf^[fof"fh,íCQRGroup fRf"f[flf"fg,Æ QRDetailLink fRf"f[flf"fg,lfOf<[fvftfbf^[,Æ,μ,ÄŽg,ç ,Û,·BfOf<[fvftfbf^[fof"fh,đ^óü,·,é,É,íC,±,ê,ç,lfRf"f] [flf"fg,ÉÚ'±,μ,È,̄,ê,î,È,è,Û,¹,ñB </p>
rbColumnHeader	<p> •i"–ñ ('i'g) fCf [fg,đ^óü,·,éê#C–ñfwfbf_[fof"fh,Še– ñ,ìæ"^a,É^óü,³,ê,Û,·B </p>
rbOverlay	<p> fCf [fg,ìŠefy [fW,ÉÄ"lfefLfXfg,Û,¹/₂,lfOf %oftfBbfN,đ^óü,μ,¹/₂,çê#,í [fo [fCfCfof"fh,đŽg,ç ,Û,·Bf [fo [fCfCfof"fh,ìŠefy [fW,É 1 %oñ^óü,³,êC,»,[fy [fW,É^óü,³,ê,é'¹/₄,ì,·,x,Ä,lfefLfXfg,·,æ,ÑfOf %oftfBbfN,ìã,Éd,È,ç,ê,Û,·B </p>

Color fvf[]pfefB13129

“K—p

TQRBand

□éCE¾

property Color

fof“fh,ì”wCEi[]F,ð[]Ý”è,μ,Ü,·[]B

Enabled fvf[]fpfefB13130

“K—p

TQRBand

□éĈ¾

property Enabled : Boolean

,±,lfof“fh,đ^óü,·,é,©,Ç,Ꝥ,©,đŽw'è,μ,Û,·□BEnabled fvf[]fpfefB,ª False ,l[]ê[]#[]CBeforePrint
fCxf“fg,Æ AfterPrint fCxf“fg,ÍĈÄ,Ñ[]o,³,è,Û,¹,ñ□BEnabled
fvf[]fpfefB,í[]C,½,Æ,¡,î^óü,·,éff[]f^,ìŽí—p,É,æ,Á,Ä•Ê,ì[]Ú[]xfof“fh,đ^óü,·,é[]ê[]#,È,Ç[]CfÆf|
[]f[]g[]¶[]□¬,ì“r't,Å•ï[]X,·,é,±,Æ,ª,Å,«,Û,·□B

Font fvf[]fpfefB13131

“K—p

TQRBand

☐éŒ¾

property Font

fof“fh,lffftjHf<fgftjHf“fg,đŽw’è,μ,Ü,·☐BfvfŒfrf...☐[,Å,àftjHf“fg,ìŠg’â/
☐k☐¬,ª“K☐Ø,É☐s,í,ê,é,æ,α,É,·,é,É,Í TrueType ftjHf“fg,đŽg,Á,Ä,,¾,¾,ç☐B

ForceNewPage fvf[]pfefB13132

“K—p

TQRBand

☐é☐¾

property ForceNewPage : Boolean

ForceNewPage fvf[]pfefB,ª True ,ì☐é☐#☐C,±,ìfof“fh,ª^ó☐ü,³,è,é‘O,É•K, ,
%oüfy☐[fW,ª☐s,í,è,Ü,·☐B

Frame fvf[]fpfefB13133

“K—p

TQRBand

□éĈ¾

property Frame : TPen

fof“fh,đ^í,p~g,ÉŽg,xfyf“ ,đ□Ý’è,μ,Ü,·□BffftfHf<fg,lfyf“ ,í 0 ,Å□C~g,í•`%œ,³,ê,Ü,¹,ñ□B

Ruler fvj[]fpfefB13134

“K—p

TQRBand

□éĈ¾

property Ruler : TQRRuler

Ruler fvj[]fpfefB,Í[]C[]ÝĈvŽž,Éfof“fh,ì”wĈEi,É•\Ž!,·,éf<[]f%o[][,É,Â,ç,Ä,ì[]Ý’è,ð[]s,ç,Ü,·[]Bf<[]f%o[][,ð•\Ž!,·,é,Æ[]Cfof“fh[]ã,ìfRf“fgf[][]f<,ì^É’u,ðĈ^,ß,é,ì,ª—e^Ŏ,É,È,è,Ü,·[]BŽŸ,ì•\,ì,ç,·,ê,©,ì!l,ð[]Ý’è,μ,Û,·[]B

’l	^Ó-i
qrrNone	f<[]f%o[][,ð•\Ž!,μ,È,ç
qrrInchesH	1 fCf“f` ŠŎŠu,ì...•½f<[]f%o[][]ü
qrrInchesV	1 fCf“f` ŠŎŠu,ì,¼f<[]f%o[][]ü
qrrInchesHV	1 fCf“f` ŠŎŠu,ì...•½,“,æ,Ñ[],¼f<[]f%o[][]ü
qrrCmH	1 fZf“f` ŠŎŠu,ì...•½f<[]f%o[][]ü
qrrCmV	1 fZf“f` ŠŎŠu,ì,¼f<[]f%o[][]ü
qrrCmHV	1 fZf“f` ŠŎŠu,ì...•½,“,æ,Ñ[],¼f<[]f%o[][]ü

BeforePrint fCxf“fg13135

“K—p

TQRBand

□éĒ¾

property BeforePrint : procedure (var PrintBand : Boolean) of object

BeforePrint fCxf“fg,Ífof“fh,ø^óü,³,ê,é'¼'O,ÉĒÄ,Ñ□o,³,ê,Ü,·□Bfof“fh,ð^óü,μ,½,,È,ç□ê□‡,Í
PrintBand fρf%of□□[f^,ð False ,É□Ý'è,μ,Ü,·□B

BeforePrint fCxf“fg13136

“K—p

TQuickReport

□é☒¾

property BeforePrint : procedure (var PrintReport : Boolean) of object

BeforePrint fCxf“fg,Íf☒f|□[fg,â^óü,³,ê,é‘O,É☒Ä,Ñ□o,³,ê,Ü,·□Bf☒f|
□[fg,ì^óü,ðfLfff“fZf<,·,é,É,Í PrintReport fpf%of□□[f^,ð False ,É☒Ý’è,μ,Ü,·□B

OnEndPage fCxf“fg13137

“K—p

TQuickReport

□éĒ¾

property OnEndPage : TNotifyEvent

OnEndPage fCxf“fg,Í□C%üfy□[fW,²□s,í,ê,é'¼'O,É•K,„ĒÄ,Ñ□o,³,ê,Ü,·□B

OnNeedData fCxf“fg13138

“K—p

TQuickReport

□éĒ¾

property OnNeedData : procedure (var MoreData : Boolean) of object

```
OnNeedData fCxf“fg, íC'Ê□, ìff□[f^f□[fX^ÈŠO, ìC”z—  
ñ, â•ï□”□CfelfXfgftf@fCf, È, Ç, ìff□[f^, ©, çfĒf|□[fg, ð□ì□¬, ·, é□ê□‡, ÉŽg, †, Ü, ·□BDataSource  
fvf□fpfefB, ðfuf%of“fN, É, μ, Ä OnNeedData  
fCxf“fg, ð□ì□¬, ·, é, Æ□C□V, μ, †□Ú□×fof“fh, ìfZfbfg, á^ó□ü, ³, ê, é'O, É OnNeedData  
fCxf“fg, áĒÄ, Ñ□o, ³, ê, Ü, ·□Bff□[f^, ì□ÅĒã, ìfZfbfg, ð^ó□ü, ·, é, Æ, ‹, É MoreData fpf%of□□[f^, ð  
False ,É□Ý'è, μ, Ü, ·□B
```


OnStartPage fCxf“fg13139

“K—p

TQuickReport

□éĒ¾

property OnStartPage : TNotifyEvent

OnStartPage fCxf“fg,í□V,μ,ϕfy□[fW,ªŽn,Ü,é,Æ,«,ÉĒÄ,Ñ□o,³,ê,Ü,·□B

PageNumber fvf[]pfefB13140

“K—p

TQuickReport

☐é☐¾

property PageNumber : Longint read only

☐»☐Ý, òfy☐[fW”Ô☐†, ðŽ!, μ, Ü, ·☐BPageNumber fvf[]pfefB, òf☐f|
☐[fg, ò☐€”ò†, ÉfCfxf”fg, ©, çfAfNfZfX, Å, «, Ü, ·☐B

RecordCount fvf[]pfefB13141

“K—p

TQuickReport

□éĒ¾

property RecordCount : Longint read only

f}fXf^[]ff[]f^fZfbfg“à,ì'[]fĒfR[]fh[]”,đŽ!,μ,Ü,·BSQLCompatible fvf[]pfefB,àŽQ[]Æ,μ,Ä,-
,¾,¾,ċ[]B

RecordNo fvf[]fpfefB13142

"K—p

TQuickReport

é¾

property RecordNo : longint read only

ff[]f^fZfbfg"à,ì»Ý,ìfR[]fh"Ôt,Å,·BRecordNo
fvf[]fpfefB,íí,É}fXf^[]fe[]fuf<"à,ìfR[]fh"Ôt,Å,·B

DisplayPrintDialog fvf[]pfefB13143

“K—p

TQuickReport

□éĒ¾

property DisplayPrintDialog : Boolean

DisplayPrintDialog ,^a True ,ÉŸ'è,³,ê,Ä,ç,éê#[]CfĒf[]
[]f^ag,^aóü,³,é,é'O,Ém^óü[]nf_fCfAf[]fO,^a•\Ž!,³,ê,Ü,·[]B,±
,lf_fCfAf[]fO,Äft[]fU[],Í[]CfvfŠf“f^[]C^óü,·,éfy[]fW[]C,“,æ,Ñftf@fCf<,É^óü,·,é,©,Ç,ꝛ
,©,đ'l'đ,Ä,«,Ü,·[]BDisplayPrintDialog ,^a True ,Ä, ,Ä,Ä,à[]Cft[]fU[],^a•W[]€fvfĒfrf...
[][,Ä^óüf{f^f“,đ%oŸ,μ,½[]ê#[],Ím^óü[]nf_fCfAf[]fO,Í•\Ž!,³,ê,Ü,¹,ñ[]B

Columns fvf fpfefB13144

“K—p

TQuickReport

□éĒ¾

property Columns : integer

Columns fvf fpfefB, í C f f Š f f O f % f x f < , â “ d ~ b ” Ô + • ë , È , Ç , ì • i — ñ (‘ i ‘ g) Ē ` Ž ® , ì f Ē f |
[fg, ð ^ ó ü , • , é , ½ , ß , É Ž g , ç , Ü , • B — ñ f w f b f _ [f o f “ f h , ì i — , É , Ā , ç , Ā , í
QRBand.BandType=rbColumnHeader , à Ž Q Ē Ē Ē , μ , Ā , , ¾ , ¾ , ç B

LeftMarginInches fvf fpfefB13145

“K—p

TQuickReport

☐é☐³⁄₄

property LeftMarginInches : Longint

☐¶—]””,đ 1/10 fCf“f`'P^Ê,ÅŽw'è,μ,Ü,·☐B,±,ì'l,É,ÍfvfŠf“f^,ì^ó☐ü•s%oÂ”\—ì^æ,ÍŠÜ,Ü,é,Ü,¹,ñ☐B

LeftMarginMM fvf fpfefB13146

“K—p

TQuickReport

☐é☒¾

property LeftMarginMM : Longint

☐¶—]”’,đf~fŠf☐☐[fgf·P^Ê,ÅŽw’è,μ,Ü,·☐B,±,ì'l,É,ÍfvfŠf“f^,ì^ó☐ü•s%oÂ“\—ì^æ,ÍŠÜ,Ü,ê,Ü,¹,ñ☐B

ReportTitle fvf[]fpfefB13148

“K—p

TQuickReport

□éĒ¾

property ReportTitle : String

ReportTitle ,ÍvfŠf“fgf}f[]fWff,“,æ,Ñflfbfgf[]fN,ì^óüfLf...[][,É•\
Ž!,³,é,Ü,·[]B,½[]CTQRSysData fRf“f[]f[]fg,đŽg,Á,Ä ReportTitle ,đ•\Ž!,·,é,æ,¼,É[]Ý’è,μ,Ä,¢
,é[]é[]Š,É,à^óü,³,é,Ü,·[]B

ReportType fvf[]fpfefB13149

“K—p

TQuickReport

□é☒¾

property ReportType : (qrStandard, qrMasterDetail)

QRDetailLink fRf“f|[]|f|f“fg,đŽg,Á,ÄfŠf“fN,μ,½fŠf“fNfe[]|fuf<,đ^ó[]ü,μ,½,¢[]ê[]#,Í ReportType
,đ qrMasterDetail ,É[]Y’è,μ,Ü,·[]B

’l

^Ó-i

qrStandard

fe[]|fuf<,Ü,½,Í-â,¢[]#,í,¹,©,ç,ì•W[]€f☒f|[]|fg

qrSingleDetail

??

qrMasterDetail

QRDetailLink fRf“f|[]|f|f“fg,đŽg,Á,½f}fXf^[]|fŠf“fNf☒f|[]|fg

RestartData fvj fpfefB13150

“K—p

TQuickReport

☐é☐¾

property RestartData : Boolean

True (ffftfHf<fg) ,ì☐ê☐☐CQuickReport

,í^ó☐ü,đŽn,ß,é'O,Éff☐[f^fZfbfg,ì☐æ“ª,ìf☐fR☐[fh,É^Ú“® ,μ,Ü,·☐BFalse

,ì☐ê☐☐C^ó☐ü,Í☐»☐Ý,ìf☐fR☐[fh,© ,çŽn,Ü,è,Ü,·☐B

SQLCompatible fvf[]fpfefB13151

“K—p

TQuickReport

□éĒ¾

property SQLCompatible : boolean

,. , x , Ä , ðff[]f^fx[]fX , a RecordCount ŠÖ[] , ðfTf[][]fg , µ , Ä , ç , é , í , ¯ , Å , Í , , è , Ü , ¹ , ñ[]B[]u<@”\ , ÍfTf|
[]fg , ³ , ê , Ä , ç , Ü , ¹ , ñ[]v , Æ , ç , x BDE , ðGf%o[]f[]bfZ[]fW , aŽ! , ³ , ê , ½[]ê[]‡ , Í[]CSQLCompatible , ð
True , É[]Ý’è , µ , Ä , Ý , Ä , , ¾ , ¾ , ç[]B

TitleBeforeHeader fvf fpfefB13152

“K—p

TQuickReport

☐é☐³⁄₄

property TitleBeforeHeader : boolean

False (ffftfHf<fg) ,ì☐ê☐#☐C☐Å☐%
,ìfy☐[fW,ìfy☐[fWfwbj_☐[.Íf^fCfjf<fof“fh,ì'O,É^ó☐ü,³,ê,Ü,·☐BTitleBeforeHeader fvf fpfefB,ð
True ,É☐Ý'è,·,ê,î,±,ì☐#☐~ ,ª<t,É,É,è,Ü,·☐B

fifbfh13153

Print

Stretch

Print f\fbfh13154

“K—p

TQRCustomControl

□éĒ¾

```
procedure Print(X,Y : Integer); virtual
```

Print f\fbfh,í QRPrinter flfufWfFfNfg,ÉfRf“f|□[lf“fg,đ’—
,Á,ĂŽw’è,³,ê,^½^Ê^u,É^ó□ü,μ,Û,·□BffftfHf<fg,ì Print f\fbfh,í□Cfvf□fefNfg,É□Ý’è,³,ê,^½ Caption
fvf□fpfefB,lfefLfXfg,đ^ó□ü,μ,Û,·□B•Ê,ì“@□ì,đ□s,¤□é□‡,í Print f\fbfh,đfI□[fo□[f
%ofCfh,μ,Û,·□B

fvf[]pfefB13156

AutoSize

Height

Left

Top

Visible

Width

AutoSize fvfpfefB13157

“K—p

TQRCustomControl

☐é☐¾

property AutoSize

Height fvf[]pfefB13158

“K—p

TQRCustomControl

□éCE¾

property height

fRf“fgf[][]f<,ì□,,³,ðfsfNfZf<’P^Ê,ÅŽ!,μ,Ü,·□B

Left fvj fpfefB13159

“K—p

TQRCustomControl

□éĈ¾

Property Left

□¶—]”’,©,çĈv,Á,½fRf“fgf□□[f<,ì%o;•ûĈü,ì^Ê’u,ðfsfNfZf<’P^Ê,ÅŽ,μ,Û,·□B

Top fvfpfefB13160

“K—p

TQRCustomControl

□éĒ¾

property Top

fRf“fgf□□[f<,ìfof“fh“à,Å,ì□c•ûĒü,ì^É’u,ðŽì,μ,Û,·□B

Visible fvf fpfefB13161

“K—p

TQRCustomControl

☐é☐¾

property Visible

True (ffftfHf<fg) ,ìé☐±,ÍRf“fgf☐☐[f<,ª^ó☐ü,³,é,Ü,·☐BFalse ,ìé☐±,Í^ó☐ü,³,é,Ü,¹,ñ☐B

Width fvf fpfefB13162

“K—p

TQRCustomControl

□éCE¾

property width

fRf“fgf□□[f<,ì•□,ðfsfNfZf<’P^Ê,ÅŽ!,μ,Ü,·□B

fvf[]pfefB13163

DataSource

DetailBand

FooterBand

HeaderBand

Master

PrintBefore

DataSource fvf[]fpfefB13164

“K—p

TQRDetailLink

□éĒ¾

property DataSource : TDataSource

,±,ì QRDetailLink ,@Ú'±,μ,Ä,ç,éff[]f^f[]fX,ðŽ!,μ,Û,·□B

DetailBand fvf fpfefB13165

“K—p

TQRDetailLink

□éCE¾

property DetailBand : TQRBand

QRDetailLink ,ìÚ×fof“fh,Æ,μ,ÄŽg,æfof“fh,Å,·Bf}fXf^□[fŠf“fNfŠfCE□[fVf#f“ ,ð³,μ,-
□Ý’è,μ,Ä,ç
,è,îCCÉ»□Ý,ìf}fXf^□[fCEfR□[fh,É^è’v,μ,½fŠf“fNfe□[fuf<,ìŠefCEfR□[fh,²,Æ,ÉÚ×fof“fh,â^óü,
³,è,Û,·Bf}fXf^□[fŠf“fN,ì□Ý’è•û-@,É,Ä,ç,Ä,ìÚ×,í Delphi ,ìf}fjf...fAf<,ðŽQ□Æ,μ,Ä,,¾,³,ç□B

FooterBand fvfpfB13166

“K—p

TQRDetailLink

é¾

property FooterBand : TQRBand

QRDetailLink

,lftbf^[]fof“fh,Æ,μ,ÄŽg,xfof“fh,Å,·Bftbf^[]fof“fh,í[]CE»[]Ý,lf}fXf^[]fCEfR[]fh,É^é'v,;é,;,
x,Ä,lfŠf“fNfCEfR[]fh,ìCEã,É^óü,³,è,Ü,·[]B

HeaderBand fvfpfefB13167

“K—p

TQRDetailLink

☐é☐¾

property HeaderBand : TQRBand

QRDetailLink ,jfwfbf_☐[fof“fh,Æ,μ,ÄŽg,xfof“fh,Å,·☐B

fCxf“fg 13168

OnFilter

OnNeedData

OnNeedData fCxf“fg13169

“K—p

TQRDetailLink

□éĒ¾

Property OnNeedData : procedure (var MoreData : Boolean) of object

'Ê□í,ìff□[f^f□[fX^ÈŠO,ì”z—ñ,È,Ç,ìf□[fX,©,çfĒf]□[fg,đ^ó□ü,·,é□ê□‡,í□COnNeedData
fCxf“fg,đŽg,Á,Ä□i•ñ,đŽæ,è□o,μ,Ü,·□B□Ú□×,í QuickReport.OnNeedData
fCxf“fg,đŽQ□Æ,μ,Ä,,¾,¾,ç□B

Lines fvf[]pfefB13170

“K—p

TQRMemo

□é☒¾

property Lines : TStringList

Lines fvf[]pfefB,É,Í[]CQRMemo fRf“fgf[][]f<“à,É•\Ž!,.,éfefLjXfg,đŠi”[,μ,Ü,·[]BLines
fvf[]pfefB,ÍŽÀ[]sŽž,É TStringList flfufWfFfNfg,lf[]\fbfh,đŽg,Á,Ä‘€[]i,Á,«,Ü,·[]B

f\fbfh13171

ZoomToWidth

ZoomToFit

ZoomToWidth f\fbfh13172

“K—p

TQRPreview

☐é☐¾

procedure ZoomToWidth;

f\j☐fj...☐[.Åfy☐[fW,ì•☐,☐fRf“f|☐[fj“fg,ì•☐,É,¿,å,☐,ÇŽû,Ü,é,æ,☐,ÉŠg‘å,Ü,½,Í☐k☐–,μ,Ü,·☐B

ZoomToFit ffbfh13173

“K—p

TQRPreview

é¾

procedure ZoomToFit

fW’S’i,afvfEfrf...[fRf“fgf[f<“à,ÉŽù,Ü,é,æ,α,ÉŠg’â,Ü,½,Ík¬,μ,Ü,·B

PageNumber fvffpfefB13174

“K—p

TQRLabel

☐é☐^{3/4}

property PageNumber : Integer

PageNumber fvffpfefB,í☐Cfvf☐fjf...☐[,É•\Ž|,μ,½,☐fy☐[fW,☐☐Y'è,·,é,½,β,ÉŽg,☐,Ü,·☐B,±
,lfvf☐pfefB,☐•í☐X,·,é,☐☐☐»☐Y,lfvf☐fjf...☐[fy☐[fW,☐•í,í,è,Ü,·☐B

LinkBand fvf fpfefB13175

“K—p

TQRBand

é¾

property LinkBand : TQRBand;

LinkBand fvf fpfefB, í 2 , Á È ã , ì fof “ fh, ð • K, , “ ~ , ð f y [f W, É ^ ó ü . , é , Æ , « , É Ž g, ç , Ü , · B LinkBand
fvf fpfefB, Á , í • K, , ð u Ž Ÿ , ì v fof “ fh, ð ~ A Ç < , µ , È , ~ , é , í , È , è , Ü , ð ñ B ‘ O , ì fof “ fh, Á , í , È , ç , ì , Á ‘ ^ Ó , µ , Ä , -
, ¾ , ç B 3 , Á È ã , ì fof “ fh, ð ‘ ± , ~ , Ä ~ A Ç < , Á , « , Ü , · B ~ A Ç < , ð , é , ½ fof “ fh, ð , , x , Á ^ ó ü , , é —] —
T, ð f y [f W, É Ž c, Á , Ä , ç , È , ç ð é ð † , í % ü f y [f W, ð s, í , é , Ü , · B

PrintBefore fvf[]fpfefB13176

“K—p

TQRDetailLink

□é☒¾

property PrintBefore : Boolean;

False (ffftfHf<fg)

,ì[]ê[]#[]Cf}fXf^[][fe[][fuf<,ì[]Ú[]×fof“fh,ª,à,μ, ,ê,î,» ,ì☒ě,ÉfŠf“fNfe[][fuf<,ª^óü,ª,ê,Ü,·[]BTrue
,É[]Ý'è, ,é,ÆfŠf“fNfe[][fuf<,Íf}fXf^[][fe[][fuf<,ì[]Ú[]×fof“fh,ì'O,É^óü,ª,ê,Ü,·[]B

OnFilter fCxf“fg13177

“K—p

TQRDetailLink

□éĒ¾

Property OnFilter : procedure (var PrintRecord : Boolean) of object

OnFilter fCxf“fg,ÍfĒf|□[fg,ì□€”ö’t,ÉfĒfR□[fh,Éf□□[fff<ftfBf<f^,ð,©,¯,é,½,ß,ÉŽg,ç
,Ü,·□Bff□[f^,ì”à—e,ðf`fFbfN,μ,Ä□C,».,ÍfĒfR□[fh,ð^ó□ü,μ,½,,È,ç□ê□‡,Í PrintRecord fpf
%of□□[f^,ð False ,É□Ý’è,μ,Ü,·□B

WordWrap fvfpfefB13179

“K—p

TQRMemo

☐é☐¾

property WordWrap : Boolean

WordWrap fvfpfefB,ª True ,ìé☐☐CfRf“fgf☐☐[f<,ì•☐,É☐☐,í,¹,Ä☐s,ª☐Ü,è•Ô,³,é,Ü,·☐BFalse
,ìé☐☐,í☐Ü,è•Ô,³,é,Ü,¹,ñ☐B

Zoom fvf fpfefB13180

“K—p

TQRLabel

☐é☐^{3/4}

property Zoom : Integer

☐»☐Ý, òfY☐[f€” {—!, ðfp☐[fZf“fg, ÅŽ!, μ, Ü, ·☐B

