

☐@P&A fVfFfAfEfFfA

☐@P&A fVfFfAfEfFfA'ň<ÿ,É,æ,éŠeŽífvf☐fOf%€f,Å,·

 Windowsft☐[fefBfŠfefB

☐@




Fancy Fax (ASP)

☐@



FasType (Trendtech Corporation)

 WindowsfQ☐[f€

☐@



Strip Roulette V1.04INT (Th. Zeh)

☐@




Strip Poker V1.0INT (Th. Zeh)

☐@



Strip Black Jack V1.0INT (Th. Zeh)

 ☐Vfo☐[fWf#f“

☐@



WinImage v2.50 ĀP“½,²0°¼P☐ì☐-(16bit)(Gilles Vollant)

☐@



WinImage v2.50 ĀP“½,²0°¼P☐ì☐-(32bit)(Gilles Vollant)

☐@



GIF Construction Set 95(32bit)



GIF Construction Set v1.0j(16bit)



 SmilerShell/95 v1.4



 CDPlayer v3.7




 ThumbsPlus v3.0a




TOP10 fVfFfAfEfFfA




 WinZip 6.0a 16-bit (Niko Mac)



 WinZip 6.0a 32-bit (Niko Mac)




 Duke Nukem 3D @fVfFfAfEfFfA"Å




 Epic PINBALL (Niko Mac)




 Graphic Workshop for Win95 (Alchemy Mindworks)



 Graphic Workshop for Win3.1 (Alchemy Mindworks)



 Extreme Rise of the Triad





Mod4Win v2.30 (Jens Puchert)



PhotoVision Pro v1.10 (Software Vision Corp)



Air Command (Joseph Jaworski)



NeoSoft Icon Editor v1.0 (NeoSoft Corp.)

P & A fvffAfEffa

TEL: (0425) 35-9901('ã) FAX: (0425) 35-

9902

NIFTY-Serve: PAF02461, CXH00400

190 "Œ<ž"s-š[]žs[]ã[]>'~1-3-6-2

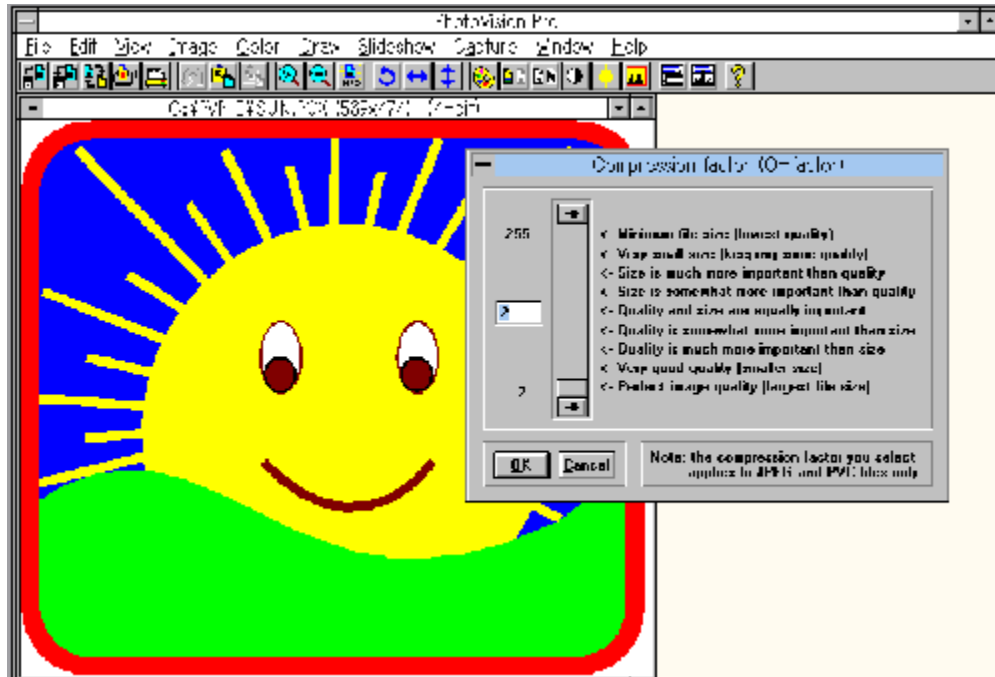


(For information in English, call 0425-35-9901)

 PhotoVision Pro v1.10


インストールの実行

 Žû~^fffbf€fnfgfš@DISC1:\P_AND_A\PVP11A



 ŠT-v

f0f%ftfBfbfNfcf [fw, ì ' [[ŠÇ- [fvf [f0f%fe [B [; "úŽg-p, ³, ê, Ä, ç
, éŽÀŽ; "I-w, Ç ' [, Ä, Ì%æ'æftfH [f}fbfg, ð'€ [ì, ., é, ±
, Æ, ª, Å, «, Ü, · [BftfHfg%æ'æ, É
%¹ [º, ð•t, ¯, ½, è [APCXftf@fcf<, ð^³ [kJPEGftfH [f}fbfg, É•İŠ·, ., é, ±
, Æ, à [APhotoVision Pro, È, ç%Â" \, Å, · [B

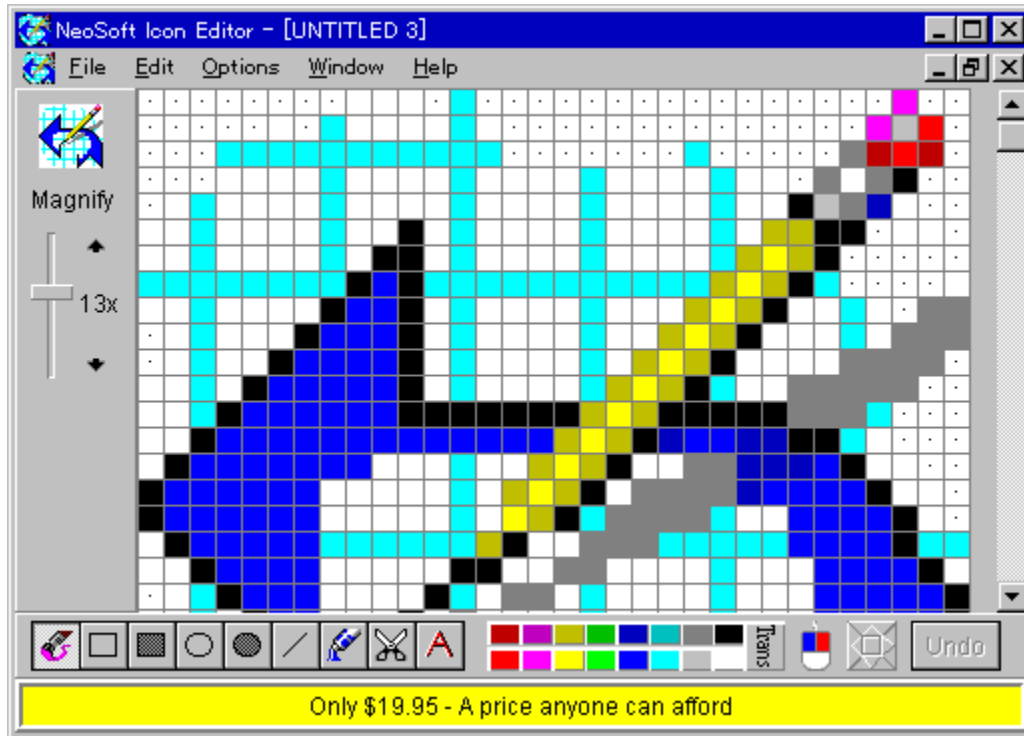
 [Ú, µ, , Í [ADISC1:\P AND A\PVP11A\README.JPN, ð, " "Ç, Ý, , ¾, ³, ç [B

, ±, Ìfvf [f0f%fe, ÍP&A, ª "ú- { ' ä- ["X, Æ, È, Á, Ä, ç, Ü, · [B "o~^~
pŽt, É<L "ü, Ì [ä [AFAX [A ŽèŽt [A "d~b -", Í NIFTY-Serve

NeoSoft Icon Editor v1.0



Žů~^ffBf&fNfgfŠ@DISC1:\P_AND_A\NSICON10



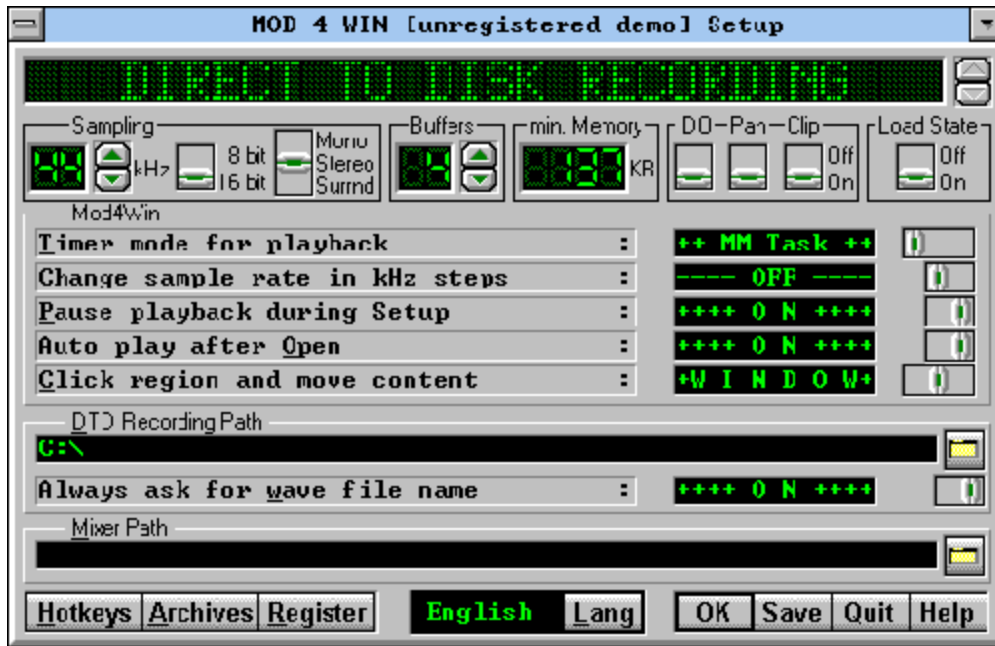
ŠT-v

Windows 95,É,È,Á,ÄfAfCfRf“fGffBf^,ª,È,-
,É,Á,Ä,µ,Û,Á,½,ª□A,â,Í,èŽ©ª,É,è,É□e,µ,Ý,â,·,¢□AŠo,¡,â,·,¢fAfCfR
f“,ðŽg,¢,½,¢,à,Ì□BfAfCfRf“,Ìì□¬,“,æ,Ñ,É•Ò□W,É'â•İŠÈ'P,ÅŽg,¢
,â,·,¢fvf□fOf%f€,Å,·□BEXE,âDLL,Æ,¢
,Á,½ftf@fCf<,©,¢fAfCfRf“,ðŽæ,è□o,·,Î,©,è,Á,Í,È,-
□ABMPftfH□[f}fbfgfCf□□[fW,ðŽæ,è□ž,ñ,ÅfAfCfRf“,É,µ,Ä,µ,Û,±
,Æ,à,Á,«,Û,·□BfAfCfRf“,ÍŽÀ□i,Á•\Ž¡,³,è□A•i□“,ÌfAfCfRf“,ð“~Žž,É•\
Ž¡,Á,«,é,Ì,Å□AfAfCfRf“ŠÔ,ÌfJfbfgfAf“fhfy□[fXfg,ð□s,±
,Æ,àŠÈ'P□BWindows 95,É,à'Î%ž,µ,Ä,¢,Û,·□B

❑ M4Win v2.30



❑ Žů~^fffbfEfNfgfŠ@DISC1:\P_AND_A\M4WIN230



❑ ŠT-v

fTf|[]fg,μ,Ä,¢,éftfH[]f}fbfg,Í[]ANoiseTracker(*.NST)[]APro-/Fast-/
 TakeTracker(*.MOD)[]AMod's Grave
 (*.WOW)[]AOktaLyzer(*.LKT)[]AScreamTracker
 2.x(*.STM)[]AComposer669(*.669)[]AMultiTracker(*.MTM)
 ,Å[]A32f`fff`flf<,Ü,Å[]BfTfEf`fhfTf`fvf<,Í11[]`48kHz[]A8/16frfbfg,Åf
 ,fmf%<[]EfXfefEfI,Í,à,¿,è,ñ,Ì,±,Æ[]AfTf%fEf`fh,àfTf|[]fg,μ,Ä,¢
 ,Ü,·[]BfTf`fvf%[][,Æ,μ,Ä,Ì<@"\,Ì'¼,É[]AfWf...
 []fNf{fbfNfX,Æ,μ,Ä,àŽg,[]A[]Å'á2,999Æ,Ü,Å,ÌMODftf@fCf<,ð^ê"x,É[]Ä
 []¶,·,é,±,Æ,²,Å,«,Ü,·[]Bf~f...
 []fWfbfNftf@fCf<[]î•ñ,àŠeŽífGftfFfNfg,Æ,Æ,à,É•\Ž|,³,é[]A•\Ž|%æ-
 Ê,à•İ[]X%Ä"\[]B,É,©,È,©[]-%ñ,è,Ì,«,fvf[]f0f%€f,Å,·[]B

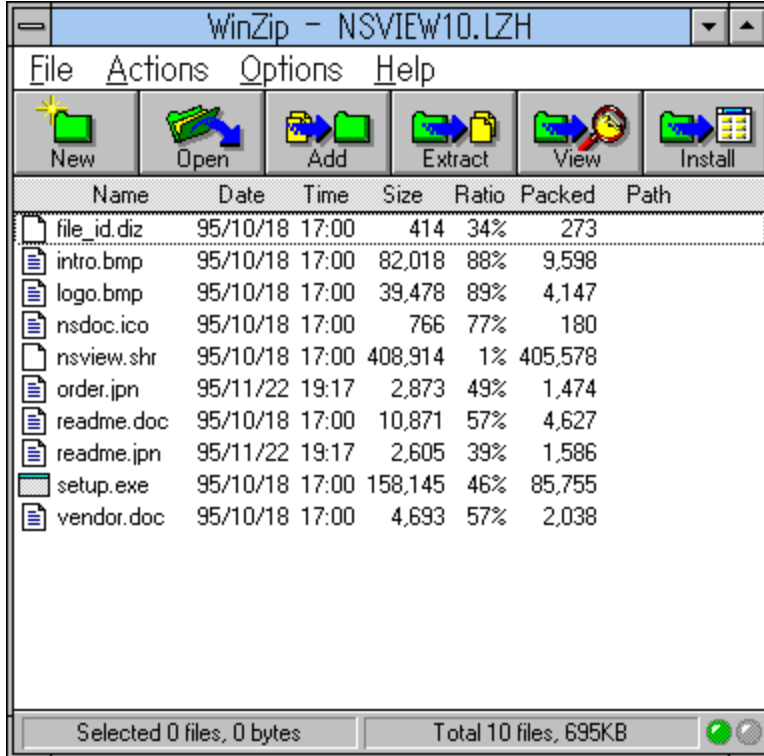
❑ []Ú,μ,,Í[]ADISC1:\P_AND_A\M4WIN230\README.JPN,ð,""Ç,Ý,,¾,³,¢[]B



@Winzip for Windows 16-bit Version



ŽŮ~^ffjBf€fnfgfŠ@DISC1:\P_AND_A\WZ60A_16



ŠT-v

,±,İfvf□fOf%f€
,í'ã•\“I,È^³□kftf@fCf<,Å, ,ézipftf@fCf<,ð“WŠJ□A^³□k,·,é,½,ß,İfc□
[f<,Å,·□B,±,İfo□[fWf†f“,Í16-
bit”Å,Å,·□BWindows95,âWindowsNT,Å,àŽg,ı,Ü,·,ª□A32-
bitfo□[fWf†f“,Í•Ê“r-p^ô(DISC1:\P_AND_A\WZ60A_32,ÉŽŮ~^),³,ê,Ä,¢
,Ü,·□B



□Ú,µ,,Í□ADISC1:\P_AND_A\WZ60A_16\README.JPN,ð,““Ç,Ý,,¾,³,¢□B

,±,İfvf□fOf%f€,ÍP&A,ª“ú-{‘ã-□“X,Æ,È,Á,Ä,¢,Ü,·□B“o~^-



@Winzip for Windows 32-bit Version



Žû~^ffBfEfNfgfŠ@DISC1:\P_AND_A\WZ60A_32

WinZip (Unregistered) - WINZIP95.EXE							
File Actions Options Help							
New Open Add Extract View Install							
Name	Date	Time	Size	Ratio	Packed	Path	
file_id.diz	95/12/04	06:01	452	32%	306		
license.txt	95/12/04	06:01	3,788	51%	1,854		
order.txt	95/12/04	06:01	5,670	60%	2,292		
readme.txt	95/12/04	06:01	4,135	60%	1,638		
setup.exe	95/12/04	06:01	20,752	53%	9,794		
vendor.txt	95/12/04	06:01	3,599	57%	1,545		
whatsnew.txt	95/12/04	06:01	6,980	60%	2,794		
winzip.cnt	95/12/04	06:01	4,658	62%	1,756		
winzip.hlp	95/12/04	06:01	294,673	68%	93,608		
winzip.txt	95/12/04	06:01	6,930	58%	2,889		
winzip32.ex_	95/12/04	06:01	556,032	61%	217,866		
winzipfm.dl_	95/12/04	06:01	7,968	45%	4,383		
wz.co_	95/12/04	06:01	2,347	43%	1,343		
wz.pi_	95/12/04	06:01	1,157	71%	339		
wzfm32.dl_	95/12/04	06:01	16,896	53%	7,918		
wzshlex.dl_	95/12/04	06:01	11,776	59%	4,781		

Selected 0 files, 0 bytes Total 16 files, 926KB



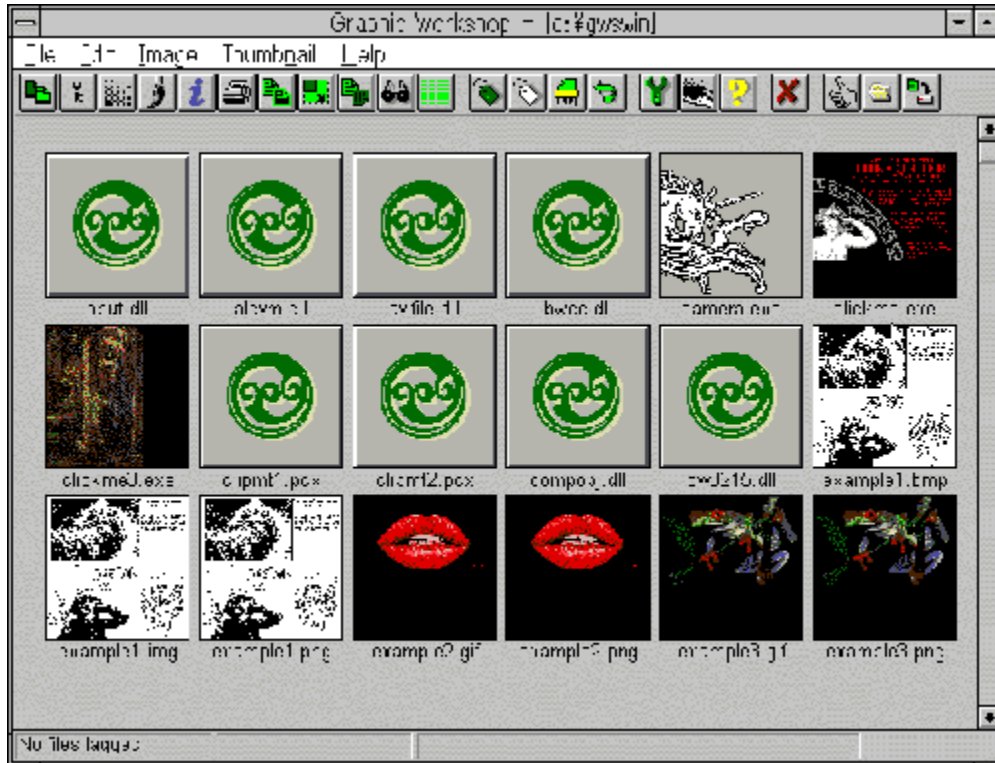
ŠT-v

, ±, İfvf fOf%f€
 , İ'ã•\“I, È^³ kftf@fCf<, Å, , ézipftf@fCf<, ð“WŠJ A^³ k, ·, é, ½, ß, İfc
 [f<, Å, · B, ±, İfo [fwf#f“, İ32-bit”Å, Å, · B16-bitfo [fwf#f“, İ•Ê“r-
 p^0(DISC1:\P_AND_A\WZ60A_16, ÈŽû~^), ³, ê, Å, ç, Ü, · B

Graphic Workshop for Windows 1.1u



ŽŮ~^fffbf€fnfgfš@DISC1:\P_AND_A\GWS11U



ŠT-v

f0f%ftfBfbfNftf@fCf<,İ•İŠ·fc[f<,â%{—
 fc[f<iftf€flfCf<™j,Í,æ,, ,è,Ü,·,ªA,±,ê,Í,»,İ-¼•û,İ<@”\
 ,ð”“†,µ,½,à,İ,Å,·Bftf|
 [fgftfH[f]fbfg,ÍGIF,JPEG™,ðŠÜ,ß,È,ñ,Æ30Ží—
 P,ð´,¡AŠèŽífGftfFfnfg,à-p^ó,³,è,Ä,ç,Ü,·B

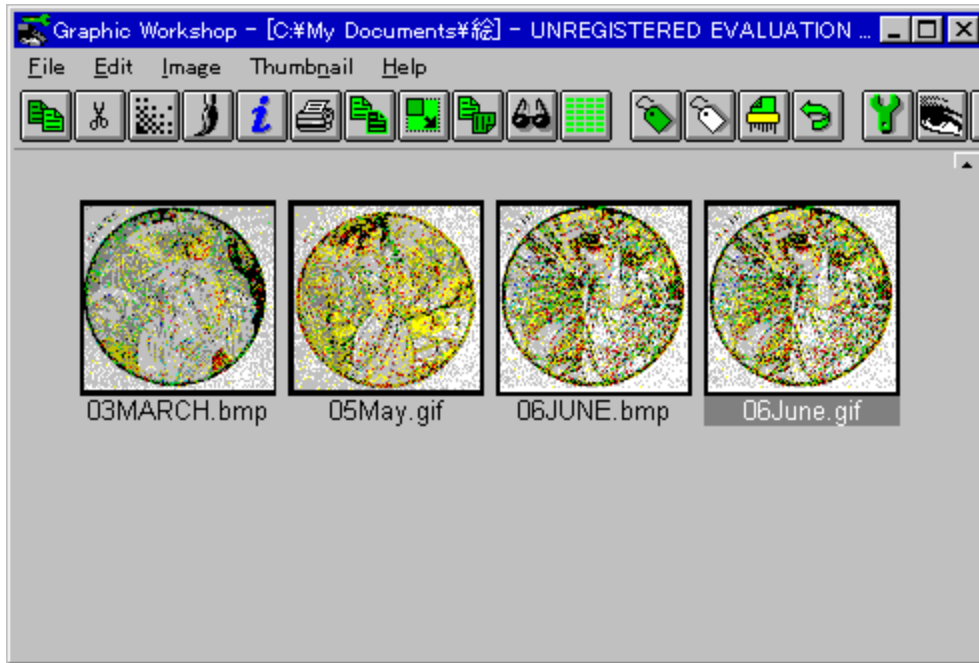
Ů,µ, ,ÍADISC1:\P AND A\GWS11U\README.JPN,ð,“Ç,Ý,¾,³,çB

,±,İfvf[f0f%f€,ÍP&A,ª“ú-{‘ã-“X,Æ,È,Á,Ä,ç,Ü,·B“o~^—
 pž†,É<L“ü,İãAFAXA ŽèŽ†A“d~b —,Í NIFTY-Serve

Graphic Workshop for Win95 (32bit)



Žů~^ffBfœfnfgfŠ@DISC1:\P_AND_A\GWSW95



ŠT-v

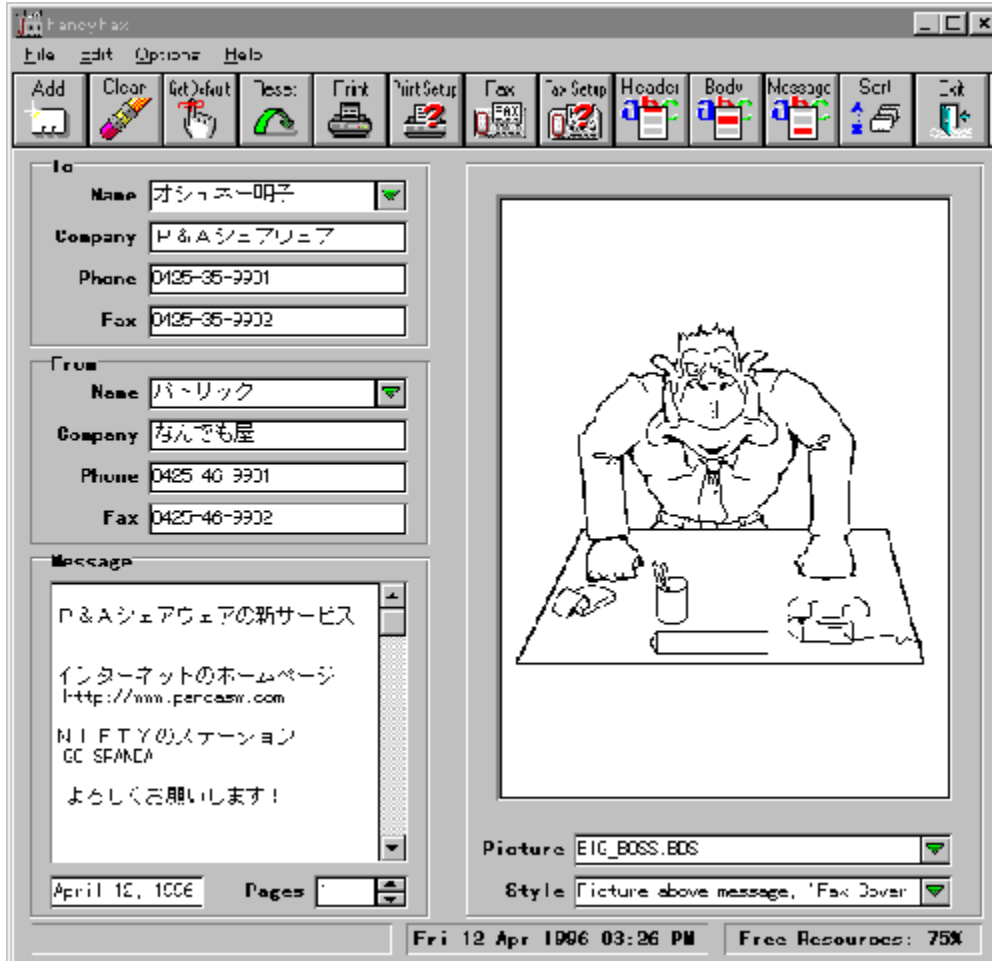
f0f%ftfBfbfnftf@fCf<, Ì•İŠ•fc[]f<, Æ, μ, Ä[]l<C, Ì[], , çfvf[]f0f
%f€[]B[]x, ©, fo[] [fwf#f" fAfbfv, ð, ·, é, ±, Æ, Å-L-¼[]BJPEG, ðŽn, ß, Æ, μ, ÄPCX,
GIF, TIFF, BMP, WPG, MSP, PFS , Ù, ©[]#œv, Q, OŽí-p, à, Ìf|fsf...f
%[] [, Èftf@fCf<ftfH[] [f}fbfg, ðfTf|[] [fg, μ, Ä, ç, Ü, ·[]B, à, ÿ, ë, ñ, ±
, é, ç, ÌftfH[] [f}fbfgŠŌ, Ì•İŠ•[]A, ", æ, Ñ, É^ó[]ü[]A•İ€`[]AftfŠfbfv[]A"]
%ñ[]AfNf[]fbfv[]AfJf%[] [' ²[]@""™[]Af0f%ftfBfbfnfc[] [f<, Æ, μ, ÄŽ[], Á, Ä, ç
, é, Æ, Æ, Ä, à•Ö-~ , Èf\ftfg, Æ, ç
, |, é, Å, μ, å, ¤[]B, Ü, ½fRf_fbnftfHfg, b, c, ÌfTf|[] [fg[]A2-256[]F, Ü, Å, Ì
%æ'œ, ðEXEftf@fCf<[]iŽ©"@•\Ž![]j, É•İŠ• , Å, «, é, Æ, ç, ¤
, Ì, à"Á•M, É'l, μ, Ü, ·[]B, Ü, ½FLI/FLC[]AAVI, È, Ç, Ì"@æftf@fCf<, ^μ, |, é, ±
, Æ, à-f-Í, Ì, ð, Æ, Å[]Bftf@fCf<, ©, ç1fRf}
, ðŽæ, è[]o, μ, Ä[]A'¼, ÌftfH[] [f}fbfg, É•İŠ• , ·, é, ±, Æ, ¾, Á, Ä%Ä"\ , Å, ·[]B

[]Ú, μ, , Í[]ADISC1:\P AND A\GWSW95\README.JPN, ð, ""Ç, Ý, , ¾, ³, ç[]B

❑ FANCYF11 Cyberpunk



❑ ŽŮ~^fffbJf@fnfgfš@DISC1:\P_AND_A\FANCYF11



❑ ŠT-v

- ftf@fbfNfX,ì'~•tfJfo[][]ì~fc[]f< ftf@fbfNfX,ì'~
•tfJfo[][,È,ñ,ÄA^ê"x©,½,çŽì,Ä,ç,ê,Ä,µ,Ü,κ,à,ì,É,Í^á,ç,È,ç
,@Aftf@fbfNfX,@'~•t,³,è,½Žž,É^è"ÔÄ%É©,é,ì,à,±
,ìfy[]fw,¾B'SŽè,ÉŽ•@,ìftf@fbfNfX,đ^óÜ•t,~,½,ç,ÆŽv,Á,½Žž,ÉA,±
,ìfvf[]fOf%f€,đŽg,Á,Ä,Ý,é,Æ-Ç,ç,¾,è,κB

□@
¾<L%º,³,¢□j

fNf¢fWfbfgfJ□[fh□ifJ□[fhfif“fo□[□^Šú¢À,ð-

‘î”z•Ö’...•¥□ifvf%fX\700□j..

•i•” ,Æ^øŠ•,É‘ã<à,ð,“Žx•¥,¢,,¾,³,¢□B

NIFTY fVfFfAfEfFfA’-<à‘ã□s GO SWSOKIN

(GO SWSOKIN ,Å PAF02461

,Æf^fCfv,•,é,Æ¢»Žž“_ ,Å P. & A.

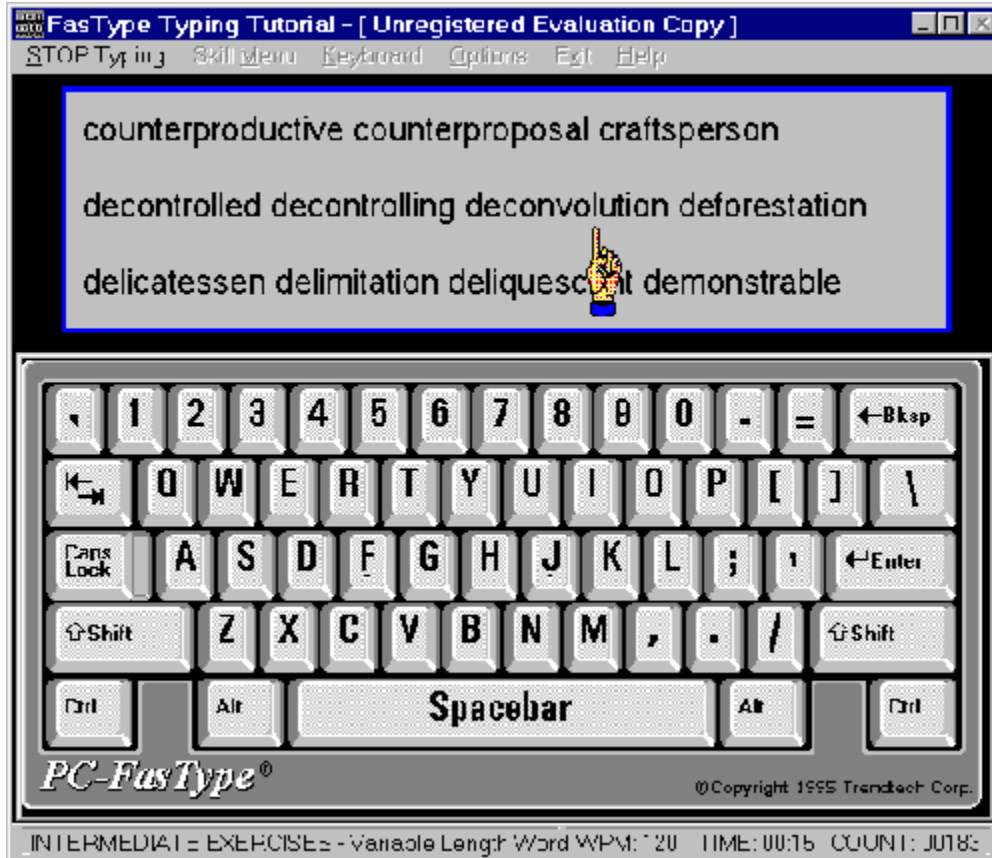
,Å“o~^,Å,«,éfVfFfAfEfFfAfvf□f0f%f€

,İfŠfXfg,ª¢©,ç,ê,Û,•□B)

❑ Fastype for Windows v5.0



❑ Žů~^ffBf€fnfgfš@DISC1:\P_AND_A\FASTYP50



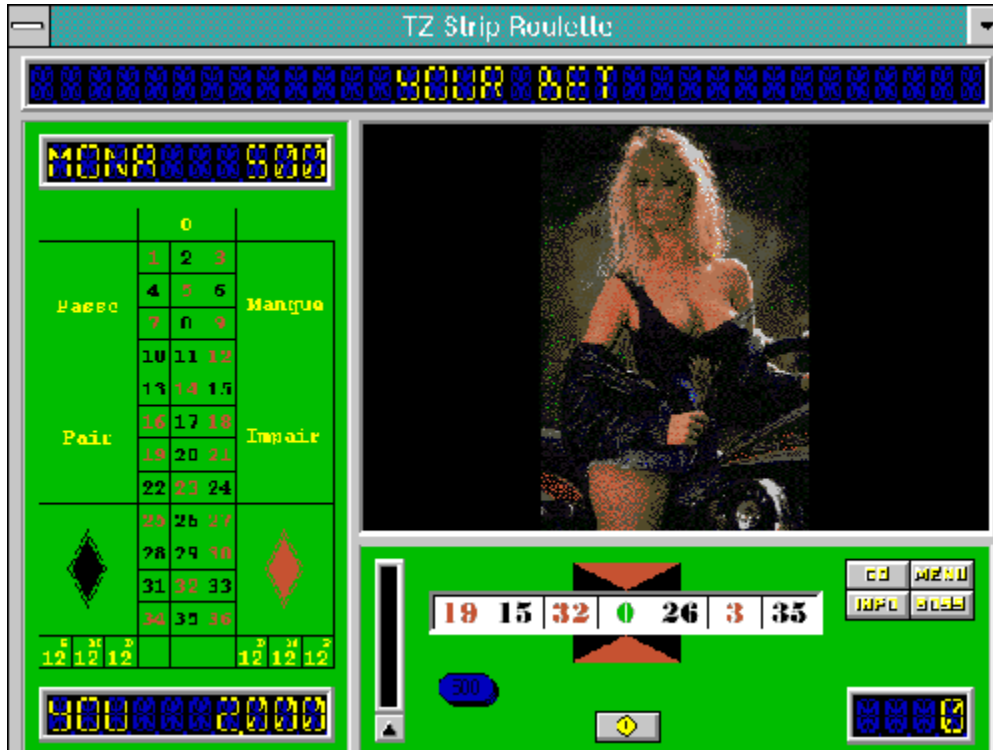
❑ ŠT-v

Fastype for Windows, ĪWindows ě-p, Īf^fCfv-ŭKfvf f0f%f€
 , Ā, ·Bf^fCfsf" f0, ō-ŭK, ·, é, ±, Ā, ĀfRf" fsf... [f^ [, ō, æ, è-LŒø, ĀŠ^ -
 p, μ, ½, φl, Ī, ½, β, ĒfffUfCf" , ³, ê, Ŭ, μ, ½BFasType, ĪfL [f{ [fh, Ī3DfCf
 [fw, ō·\
 ŽĪ, μCTTrueTypeftfHf" fg, ĀfAfj f [fvf†f" , ĀCf^fCfsfXfg, ā³šm, Ēf^fC
 fv, Ā, «, é, æ, ×·, , Ā, , ê, Ŭ, ·B
 ŠŽò, ©, çfvf, Īf^fCfsfXfg, ĒŽŠ, é, Ŭ, ĀCf^fCfsf" f0-ŭK, āo-^ , é, æ, ×
 , Ē, Ē, Ā, Ā, φ, Ŭ, ·B

• TZ-Strip Roulette V1.0INT



• Žů~^fffbfœfnfgfš□@DISC1:\P_AND_A\STRIPRL



• ŠT-v

, ±, ìftf%ff"fx□»f<□[fœfbfgfQ□[f€ , É, í25, ìRŽw'è, ì□-□« , ìSVGA
%æ'œ□A%¹Šy, ÆfAfNfVf†f"□EfTfEf"fh, ^aŠÜ, Ü, è, Ä, ç
, Ü, ·□Bf<□[fœfbfgfQ□[f€ , Æ, µ, Ä, Í" `□"I, È□f□^ , È%[^]ŽŽ, µfQ□[f€□A, , é, ç
, ìŽè-ù, ð•K-v, Æ, · , éfQ□[f€ , Æ, µ, Ä, àŠy, µ, P, ±
, Æ, ^a, Ä, «, Ü, ·□ifufœ□[fL, ðŽg, Á, Äf{□[f< , ðŽ~, ß, é, ±
, Æ, ^a, Ä, «, Ü, ·□j□B□J, ìfrf"fsf...□[f^□[f<□[fœfbfgfQ□[f€
, É'p<ü, ³, è, ¹/₂•ù, É, Í, «, Á, Æ-ž'« , µ, Ä, ç, ¹/₂, ³/₄, -, é, Í, , □B

fff, □Ef, □[fh, Å, ÍœÜ□l, ìfMfff< , ì't, ©, ç^ê□l, µ, ©'Šžè, É, µ, ÄfvfœfC, Å, «
, Ü, ¹, ñ□B

• TZ-Strip Black Jack V1.0INT



• Žû~^ffBfEfNfgfŠ@DISC1:\P_AND_A\STRIPBJ1



• ŠT-v

@TZ-Strip Black Jack, ÅA, ©, í, ç, ç, -, ÇŽè<-
, çEÜl, İfifCfXEfMfff<, ð'ŠŽè, É'İí, µ, Ü, µ, å, xBCEŽ-, ÈfXfs[f` ,Æ
%¹ŠyfTf"fvf<A, ³, ç, ÉfY[f€ft[fefBfŠfefB, ðŽg, |, İ25, İRŽw'è
æ'æi, » , ê, ¼, ê, İfMfff<, É, Å, «5Āj, ð, à, Å, Æ, ¶, Å, , è, Æ©, é, ±
, Æ, ^a, Å, «, Ü, ·B-V, Ñ, ©, ½i'P, É%[^], É-Š, é, İ, Å, Í, È, í-
ª"İ, ÉfvfEfC, ·, éj, İà-¾, à"«³, ê, Å, ç, Ü, ·B

• Ů, µ, , ÍADISC1:\P_AND_A\STRIPBJ1\README.JPN, ð, "Ç, Ý, , ¾, ³, çB
, ±, İfvf[fOf%€ , ÍP&A, ª"ú-{ 'ã- "X, Æ, È, Å, Ä, ç, Ü, ·B"o~^-

 TZ-Strip Poker V1.04INT




 ŽŮ~^fffbJfEfNfgfŠ@DISC1:\P_AND_A\STRIPPK



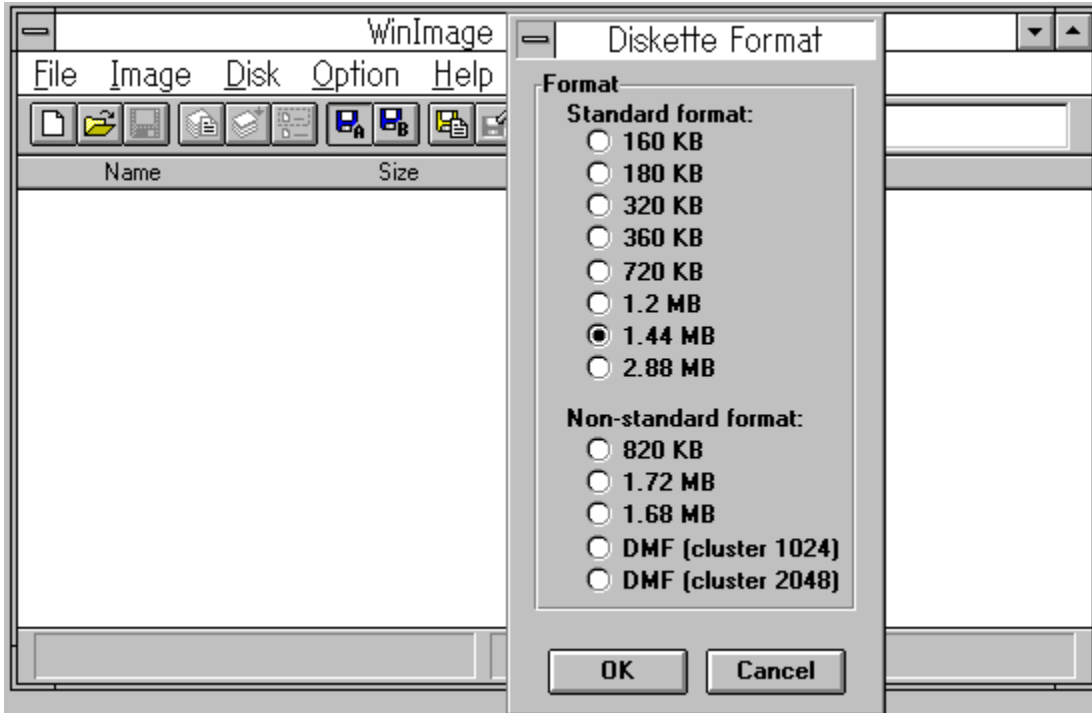
 ŠT-v

Strip Poker, Å, «, ê, ç, È, "Žo, ³, ñ, ð•%
, ©, ¹, Ä'E, ¢, ¹, Ä, , °, Ü, µ, å, ¤B, ½, ¾, ±, Ì, "Žo, ³, ñ•û, Íf|
[fj][, ðn'm, È, ³, Á, Ä, ç, é, Ì, Å25, ÌRŽw'èSVGA%æ'æi640x480,
800x600j 'S, Ä, ð©, é, É, Í, ç, å, ç, ÆŽŽŠÔ, ¢, ©, ©, é, ©, à, µ, ê, Ü, ¹, ñB-
ç"o~^"Ä, Ä, ÍÜÜ[ç, Ì, "Žo, ³, ñ, Ì"à^ê[ç, Æ, µ, ©'Í[í, Å, «, , A, » , Ì, "Žo, ³, ñ,
ÍÜÜ-ç, Ì%æ'æ, Ì"àŽl-ç, Ü, Å, µ, ©©, ç, ê, Ü, ¹, ñB

 WinImage v2.50(Windows 3.1-p)

ファイルのコピー

 Žû~^ffBf€fnfgfš@DISC1:\P_AND_A\WINIMA25



 ŠT-v

œ 'ó!!
, ±, ìfvf fof% f€, íPC98fvfš [fY, Å, í³ í, É“®ì, µ, È, çê±, ¢, , è, Ü, ·B
“o~^, ð, “l, |, Ìê±A•K, , ²Žg-p-\ 'è, ÌfRf“fsf...
[f^, ÅAfVfFfAfEfFfA”Å, Ì“®ì, ðŠm”F, ³, è, ½ãA³<K“o~^, ³, è, é, ±
, Æ, ð, “E, ß'v, µ, Ü, ·B

DOS/V<@, Å, àftf fbfS [fhf%fcfu, É, æ, Á, Ä, íA³ í, É“®ì, µ, È, çê±, ¢, , è, Ü, ·B
“o~^, ð, “l, |, Ìê±A•K, , ²Žg-p-\ 'è, ÌfRf“fsf...
[f^, ÅAfVfFfAfEfFfA”Å, Ì“®ì, ðŠm”F, ³, è, ½ãA³<K“o~^, ³, è, é, ±
, Æ, ð, “E, ß'v, µ, Ü, ·B

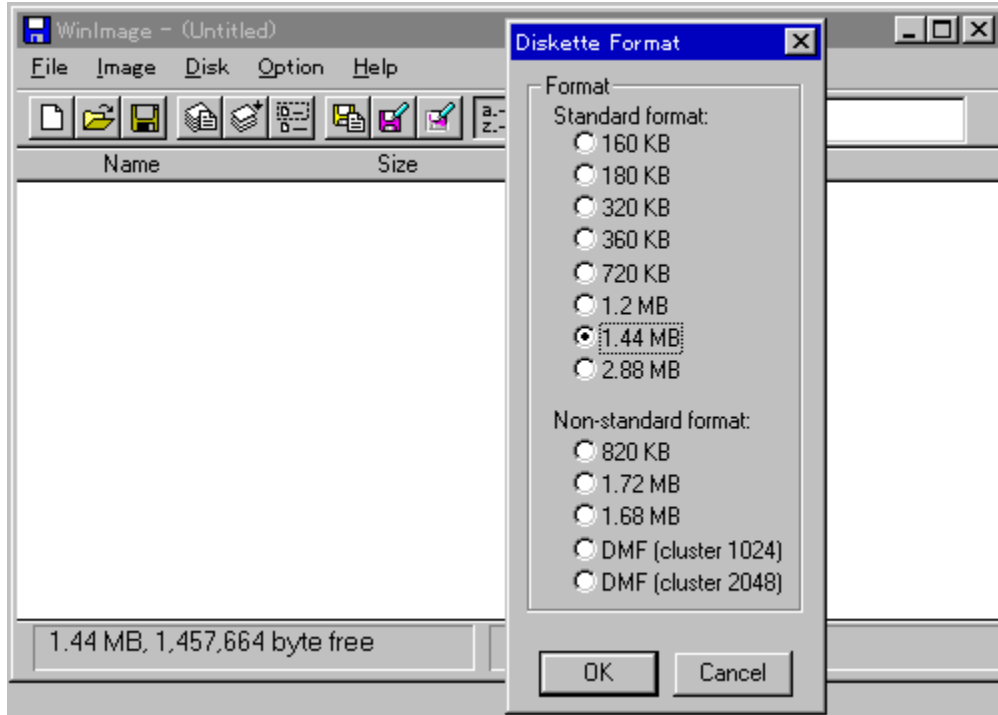
• 'ÊffBfXfnRfs [fRf}f“fh, ðŽg, ¢, ÆAfBfXfPfbfgã, Ìî•ñ, ð, », Á, -

•i•",Æ^øŠ·,É'ã<à,ð,"Žx•¥,ç,,¾,³,ç□B
NIFTY fVfFfAfEfFfA'—<à'ã□s GO SWSOKIN
(GO SWSOKIN ,Å PAF02461
,Æf^fCfv,·,é,Æ«»ŽŽ"_,Å P. & A.
,Å"o~^,Å,«,éVfFfAfEfFfAfvf□f0f%f€
,İfŠfXfg,ª©,ç,ê,Û,·□B)

WinImage v2.50(Windows 95 & NT-p)



ŽŮ~^ffBf€fNfgfŠ@DISC1:\P_AND_A\WIMANT25



ŠT-v

œ ' ^ Ó!!
, ±, Ìfvf fOf% f€ , ÍPC98fvfŠ [fY, Å, Í ³ í, É“® ì, µ, È, ¢ê ², ¢, , è, Ü, ·B
“o~^, ð, “l, |, Ìê ²A•K, , ²Žg-p-\ 'è, ÌRf“fsf...
[f^, ÅAfVfFfAfEfFfA”Å, Ì“® ì, ðŠm”F, ³, ê, ½ĀA³ <K“o~^, ³, ê, é, ±
, Æ, ð, “ ‘E, ß’v, µ, Ü, ·B

DOS/V<@, Å, àftf fbfS [fhf% fCfu, É, æ, Á, Ä, ÍA ³ í, É“® ì, µ, È, ¢ê ², ¢,
, è, Ü, ·B“o~^, ð, “l, |, Ìê ²A•K, , ²Žg-p-\ 'è, ÌRf“fsf...
[f^, ÅAfVfFfAfEfFfA”Å, Ì“® ì, ðŠm”F, ³, ê, ½ĀA³ <K“o~^, ³, ê, é, ±
, Æ, ð, “ ‘E, ß’v, µ, Ü, ·B

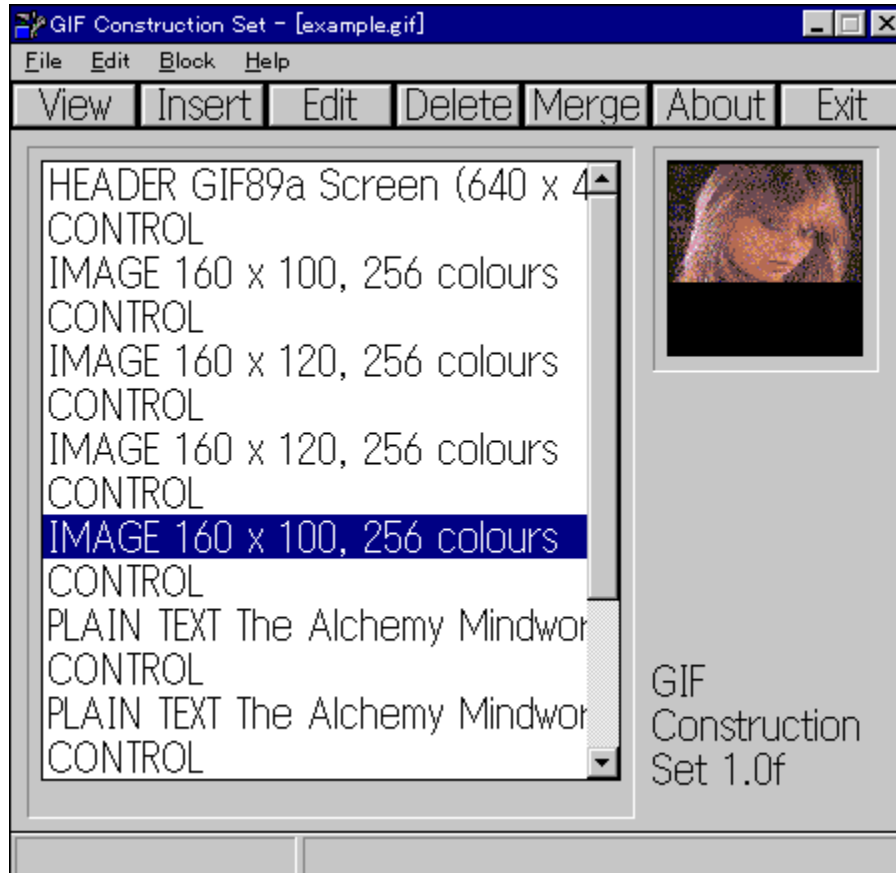
• ‘ ÊffBfXfNfRfs [fRf}f“fh, ðŽg, ¢, ÆAf ffBfXfPfbfgã, Ìî•ñ, ð, » , Á, -

•i•",Æ^øŠ·,É'ã<à,ð,Žx•¥,ç,,¾,³,ç□B
NIFTY fVfFfAfEfFfA'—<à'ã□s GO SWSOKIN
(GO SWSOKIN ,Å PAF02461
,Æf^fCfv,·,é,Æ«»ŽŽ"_,Å P. & A.
,Å"o~^,Å,«,éVfFfAfEfFfAfvf□f0f%f€
,İfŠfXfg,ª©,ç,ê,Û,·□B)

• GIF Construction Set 95 v1.0j



• ŽŮ~^ffBf@fNfgfŠ@DISC1:\P_AND_A\GIFCON32



• ŠT-v

GIF Construction Set, 32-bit, 1.0f

• i", ifuf fbfN ifCf [fwfuf fbfN AfefLfxfgfuf fbfN AfRf f"fgfuf fbfN AfRf"fgf [f<fuf fbfNj, Ž, GIFftf@fCf<, ð ì -, ·, é, ±, Æ, a, Å, «, éfc [f<, Å, ·B

œ "Á'¥

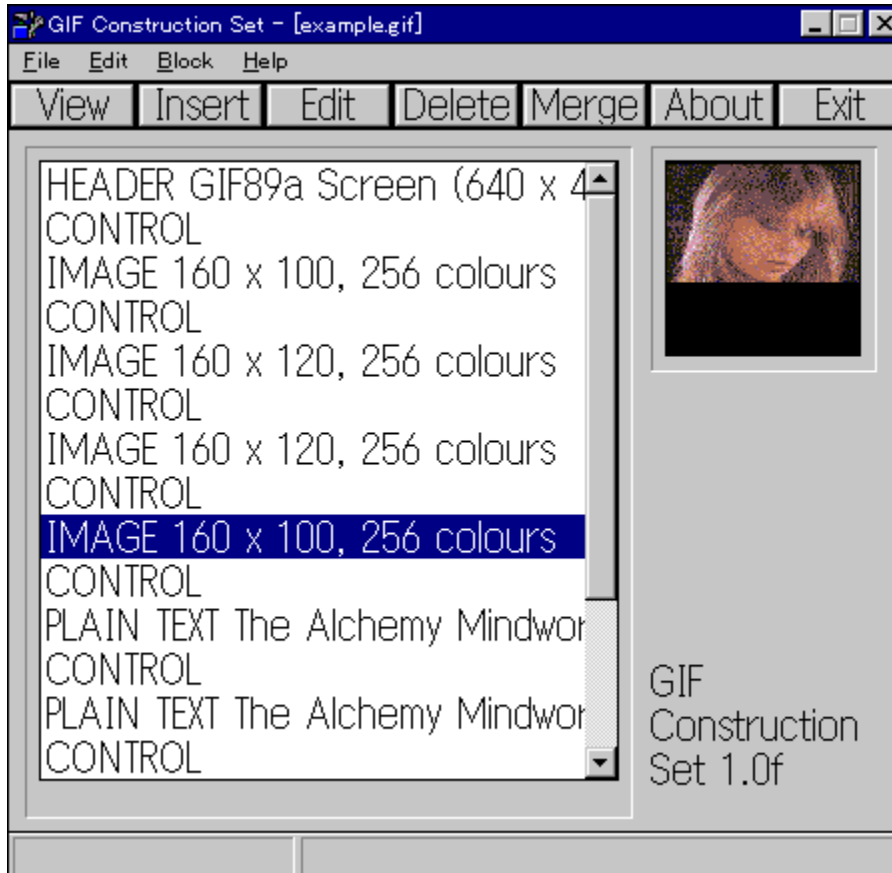
* "§-¾, ÈGIFftf@fCf<, ì ì -

, ìfŠfXfg, a©, ç, ê, ù, ·□B)

• GIF Construction Set v1.0j



• ŽŮ~^ffBf@fNfgfŠ@DISC1:\P_AND_A\GIFCON16



• ŠT-v

• j", Ìfuf fbfN ifCf [fWfuf fbfN AfefLfxfgfuf fbfN AfRf f"fgfuf fbfN AfRf"fgf [f<fuf fbfN j, ðŽ, ÂGIFftf@fCf<, ðìï-, ·, é, ±, Æ, ª, Å, «, éfc [f<, Å, ·B

œ "Á'¥

* "š-¾, ÈGIFftf@fCf<, Ììï-

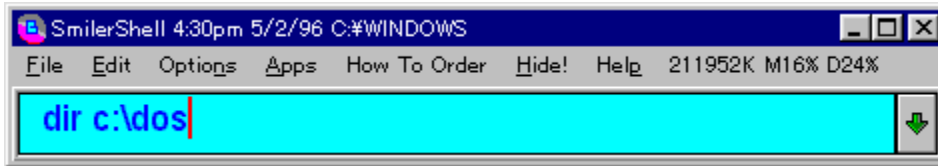
* fRf f"fgfuf fbfN, Ì'Ç%ÅA•ÒWPAíœ

* fCf [fW, Éfvf@ [f"fefLfxfgfuf fbfN, Æ, µ, Äfmf"ffBfxfgf

SmilerShell/95 v1.4



ŽŮ~^fffbf€fnfgfš@DISC1:\P_AND_A\SMI95V14



ŠT-v

Windows, Íf0f%ftfBfJf<, ÈfCf“f^[]ftfF[]fX,Æ[]Af}fEfX,Æ,ç,
,xfffofCfX,ð-p,ç,é,±,Æ,É,æ,è[]AfRf“fsf...[]f^‘€[]ì,ð[]%[]SZÒ,ìžè,ì“í,-
,à,ì,É,·,é,±
,Æ,É[]-€±,μ,½,ª[]A,c,n,rfrf}f“fh,Éšμ,ê,Ä,μ,Ü,Á,½žÒ,É,Æ,Á,Ä,Í[]Af}fE
fX‘€[]ì,ª,í,,ç,í,μ,žv,í,ê,é,±,Æ,à,μ,Î,μ,Î,¾[]B,»,,ç,
,Á,½,c,n,rfrf}f“fh^x[]DžÒ[]H,Î[]º,É%ž,,Á,,ê,é,Ì,ª,±
,ìft[][fefBfšfB,¾[]B

fvf[]f0f%f€
,ðfCf“fXfg[]f<,,é,Æ[]A,Ü,,fAfNfefBfufEfBf“fhfE,Ìf^fCfgr<fo[][,Éf{
f^f“,ª‘£,è•t,~,ç,ê,é[]B,±
,Ìf{f^f“,ðf}fEfX,Î[]¶f{f^f“,ÅfNfšfbfN,,é,Æ[]A,c,n,r’<,ª,,ç,í,ê[]A
,c,n,rfrZfbfVf#f“,ð<N“®,³,¹,é,±,Æ,È,[]A,c,n,rfrf}f“fh,ð“ü-
Í,Å,«,é,Æ,ç,,í,~,¾[]B

,±,Ì,c,n,r’<,©,ç,Í[]A,c,n,r,Ìfvf[]f0f%f€
,Í,à,,è,ñ[]AWindows,ÌfAfvfšfP[]fVf#f“,ð<N“®,³,¹,é,±
,Æ,à,Å,«,é[]B,Ü,½Windows95,âNT,Åžg-p%Å“\,È[]A’·,çftf@fCf<-¼,ð“ü-
Í,,é,±,Æ,à,,è,ñ%Å“\,¾[]B

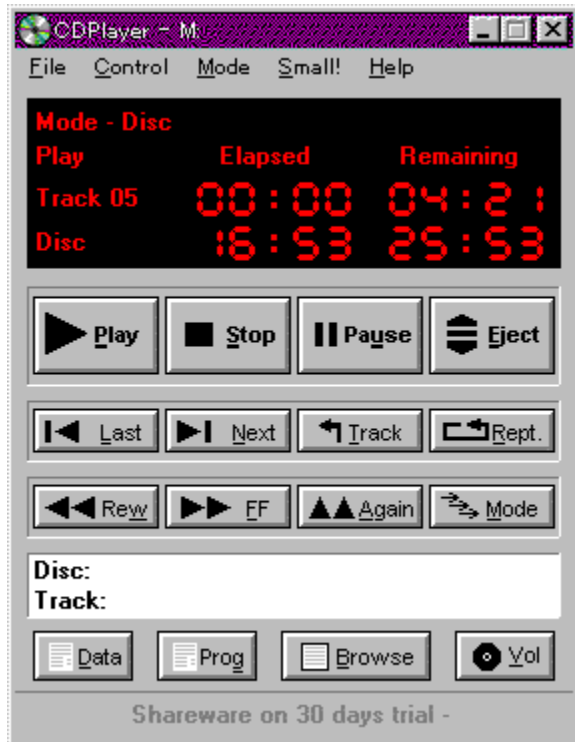
[]Ú,μ,,Í[]ADISC1:\P_AND_A\SMI95V14\README.JPN,ð,““Ç,Ý,,¾,³,ç[]B

,±,Ìfvf[]f0f%f€,ÍP&A,ª“ú-{}ã-[]“X,Æ,È,Á,Ä,ç,Ü,·[]B“o~^~
pžt,É<L“ü,Î[]ã[]AFAX[]A žèžt[]A“d~b -”,Í NIFTY-Serve
,Ì“džqf[][]f<,É,Ä•Ô’-,¾,³,ç[]B[]U,è[]ž,Ýšm“FžÝ‘æ-X’-,³,¹,Ä,ç
,½,¾,«,Ü,·[]B,È,““o~^~ž,É,Í[]A’—ž[]^žè[]”-ž,ªšÜ,Ü,ê,Ä,ç,Ü,·[]B

CDPlayer v3.7



ŽŮ~^ffBf€fnfgfŠ@DISC1:\P_AND_A\CDPLAY37



ŠT-v

fCfMfŠfXŋ,Ü,ê,İA,Æ,Ä,àŽg,çŸŽè,İ-Ç,çCDfvf€[f,,[] (Windows-p,ÆDOS-p,ª-¼•û•t,ç,Ä,ç,Ü,•[]jBŲÅ<ß,İ,Ü,Æ,ñ,Ç,İfvfXfef€,ÉCD-ROMfhf%fcfu,ª,Ä,ç,Ä,ç,Ü,•,ªA,İ,½,µ,Ä\•ª,ÉŠ^-p,³,ê,Ä,ç,é,Ä,µ,â,¤,©H,±,İCDfvf€[f,,[],İAWindows,Åî<Æ,ð,µ,È,ª,çA%¹ŠyCD,ª••,~,Ä,µ,Ü,¤,Æ,ç,¤-D,êf,fmB

‘€î,İŠÈ’PBCDfvf€[f,,[],ðÆÄ,Ño,µ,Ä%¹ŠyCD,ðfZfbfgA<Éŋ±,È,Ç,ðfvf[]fOf%€f,µAPLAYf{f^f“,ð%Ÿ,•B,»,µ,Äf{fŠf...[]f€,âfof%f“fX,ð’²B,µ,½,çACDfvf€[f,,[],ðfAfcfrf“%»,µ,Ä,“,BÆã,İ%¹Šy,ð••,«,È,ª,çA%õ“K,ÉŽdŽ-,ª,Ä,«,éB,Ü,½’Êí,İ%¹ŠyCD,İ<@“\,É%Á,|,ÄAfJf^f[]f0,ðî-µ,ÄACDfRf€fnfvf±f“,İÆŸõ,ð,•,é,±,Æ,à,Ä,«,é,İ,İACDfRf€fnf^[],É,İ~N•ñ,Ä,•B



Duke Nukem 3D v1.1 (3D Realms Entertainment)



Žů~^fffbf€fnfgfš@DISC1:\P_AND_A\DUKE3DSW



ŠT-v

Terminal Velocity, iŠJ"€³, Å, , é3D Realms
Entertainment, ©, ç□A□<, ÉfŠfŠ□[fX, ³, ê, ½Duke Nukem 3D□B□u-{"N"x f p f \
fRf"fQ□[f€ , İ'ã-{-½□v, Æ'0•}"]» , İ□, , ç3DfAfNfVf#f"fQ□[f€ , ¾□B€³□X Duke
Nukem, İ□AApogee Software, İ□l<CfVfŠ□[fY, Æ, μ, Ä□A%ß<Ž, É2-
{fŠfŠ□[fX, ³, ê, Ä, ç, é, ª□A'æ3'e, İ□i%ñ, İ<-ó, ÈfCf"f p f N f g, Å
%ä□X, İ'0, É"o□ê, μ, Ä, , ê, ½□B

□V, μ, çŽŽ, Ý, à□□□Š, É€©, ç, ê□A•□Ší, É'« , °, è, Æ, ©
% "Šu'€□ì, İ, Å, «, éžèžÖ'e□A•Ç, ÉždŠ| , -, Ä'N, ©, ª, » , ±, ð'É, é, ÆŽ©"®" -
ŽĚ, . , éf€□[fU□['•'u, È, Ç□Afof%fgfefB□[, É•x, ñ, Å, ç
, é□B□uHoloDuke□v, È, é, à, İ, à, , è□Af|□[f^fuf<, İfzf□f0f
%f€'•'u, Å□A, » , ±, ±, ±, ÉDuke Nukem, ð□o€» , ³, ¹□A"G, İ-Ú, ð, , ' , P, , Æ, ç, ✖
, İ, à□V, μ, çfgfšfbfN, ¾□B

, à, ç, è, ñ'İ□í'İ%ž, Å□Af, fff€, Æflfbfgfvf€□[, ª
%Ä□BfVfFfAfE f FfA"Å, Å, Í4□l, Ü, Å□Aftf<fo□[fwf#f" , Å, Í8□l, Ü, Å, ª'İ□í, Å
, «, é□BŠX't, É, Íf r f f f İf, f j f ^ □ [, ª' u , ©, ê, Ä, ç, Ä□A, ±
, ê, Å"G, İ□s•û, ðŠÄŽ< , Å, «, é, İ, ¾, ª□A, ±
, ê, È, Ç, Íf}f<f`fvf€□[, È, ç, Å, Í, İŠy, μ, Ý•û, ¾□B

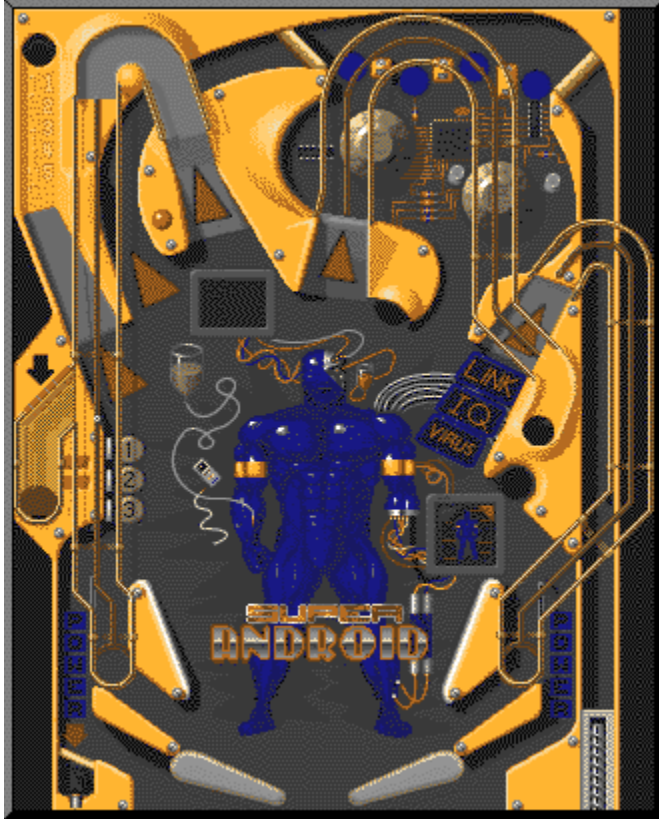


□Ú, μ, , Í□ADISC1:\P_AND_A\DUKE3DSW\README.JPN, ð, " "Ç, Ý, , ¾, ³, ç□B

, ±, İfvf□f0f%€ , ÍP&A, ª"ú-{'ã-□"X, Æ, È, Á, Ä, ç, Ü, .□B"o~^-


🔴 Epic Pinball (by Epic MegaGames)

🔴 Žů~^ffBfEfNfgfŠ@DISC1:\P_AND_A\PINBALL

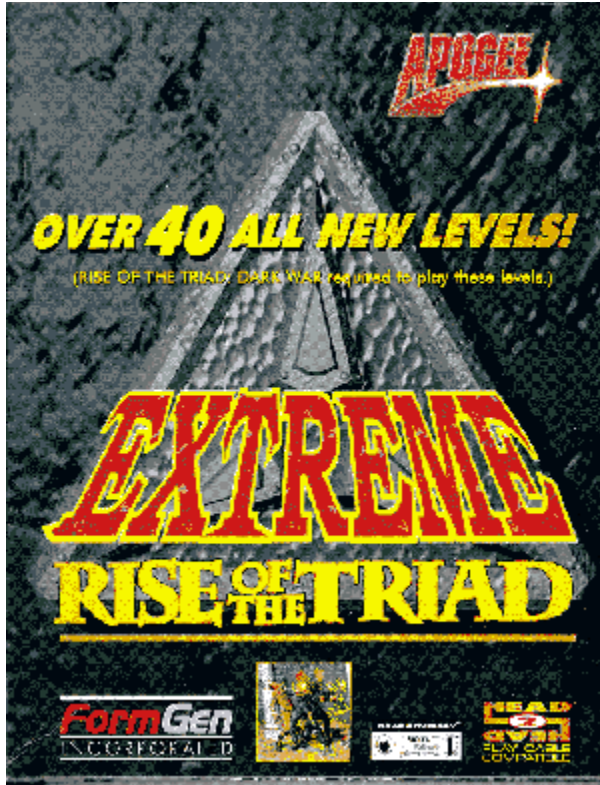


🔴 ŠT-v

—{•¨,»„Á,„è,Ìfsf“f{□[ƒ<ƒ}ƒV□[ƒ“,ªƒRƒ“ƒsf...
□[ƒ^,É“o□è□B,Q,T,U□F,u,ƒ,`ƒ0ƒ%ƒtƒBƒbƒN,Ì,·,Î,ç,µ,ƒƒTƒEƒ“ƒh,Ì□
ƒŠE(SB/Pro/Gravis!),đ,“Šy,µ,Ý,-
,¾,³,ƒ□Bƒsf“f{□[ƒ<ƒtƒ@ƒ“,É,Í□à‘Î,Ý,Ì,ª,¹,Û,¹,ň□BƒVƒFƒAƒEƒFƒA”Å,Ì
ƒe□[ƒuf<,ÍANDROID□A,P,X,X,0”N’ã,Ìfsf“f{□[ƒ<ƒXƒ^ƒCƒ<□Bƒe□[ƒuf<,¾,
-,đ’,ß,Ä,ƒ,Ä,à,“,à,í,,©,Æ,è,Ä,µ,Û,¼,Û,Ç,æ,,Å,«,½ƒ0ƒ%ƒtƒBƒbƒN□A-
{•“Žv□l,ÌƒAƒNƒVƒf#ƒ“,ÆƒTƒEƒ“ƒhƒGƒtƒFƒNƒg,Å□A,±,Ì•é,è,Í
%Æ’°,Ý,ň,È,Åƒsf“f{□[ƒ<,đŠy,µ,ň,Ä,Ý,Û,¹,ň,©□B<Á^Û“Í,È”„,è□ã,°,đ<L
~^,µ,½,Æ,Ä,àƒ|ƒsf...ƒ%□l,Èƒsf“f{□[ƒ<ƒQ□[ƒ€ Silverball ,Ì□¶,Ý,Ì□e
Epic MegaGames ,æ,è””„,³,è,½,±,ÌƒQ□[ƒ€□A,±
,ì,ç,ÍƒVƒFƒAƒEƒFƒA”Å,Å,·□B

 Rise of the Triad

 Žû~^fffbfœfnfgfš□@DISC1:\P_AND_A\ROTT13



 ŠT-v

, , È, ½, ÍfGfš□[fg“Ážê•”‘à□A"HUNT", Ìf□f“fo□[□B□łŠô, Ì‘â-
ÉžE□C, ðœJ, è•ô, ·□V<»□@<³, Ìžw“±žò, ÉfXfgfbfv, ð, ©, -, é, Ì, ¢C-±
, ¾□BDoom, Ìfšfš□[fX'¼œã, ÉšJ”, Éžæ, è, ©, ©, Á, ½, Æ, ç, ¢□AApogeežĐ“ü□°(!)
, Ì^ê□ì□B'S'Ì“I, È^ó□Û, Æ, µ, Ä, Í3DfAfNfVf±f“fQ□[f€, Ì'èœ^, Æ, ç, Á, ½, Æ, ±
, è, ¾, ¢□AZŽÉ, ðžæ, è□ž, Yfffwf^f<□^—
□, ð, µ, ½“o□ê□l•“□AfofCfIfœf“fXfœfxf<, Ì□Y'è, â□ã%°, Ì“®, «, Ì'ç
%Á, È, ç□V, µ, çžž, Y, à'½, ç□Bflfbfg, Å, Í□Å□, 11□ł, Ü, Å“~žžfvfœfC, ¢%Á“\
, ¾□B

 □ú, µ, , Í□ADISC1:\P AND A\ROTT13\README.JPN, ð, ““ç, Y, , ¾, ³, ç□B

, ±, Ìfvf□fof%f€, ÍP&A, ¢“ú-{‘ã-□“X, Æ, È, Á, Ä, ç, Ü, ·□B“o~^—

